



Pioneer Energy Services

# Dual Induction Log

15-051-26,441-00-00

API No.

Company **Murfin Drilling Company, Inc.**

Well **Braun #1-36**

Field **Wildcat**

County **Eljis** State **Kansas**

Location

W/2 SW SE SW  
330' FSL 1500' FWL

Other Services  
CNL/CDL  
MEL/BHCS

Sec: 36 Twp: 15S Rge: 19W

Permanent Datum Ground Level Elevation 1980  
Log Measured From Kelly Bushing 11 Ft. Above Perm. Datum  
Drilling Measured From Kelly Bushing

Elevation  
K.B. 1991  
D.F.  
G.L. 1980

Date 1/13/2013

Run Number One

Depth Driller 3660

Depth Logger 3658

Bottom Logged Interval 3657

Top Log Interval 00

Casing Driller 8.625 @ 1192

Casing Logger 1190

Bit Size 7.875

Type Fluid in Hole Chemical

Salinity, ppm CL 10,000

Density / Viscosity 9.5 79

pH / Fluid Loss 10.0 10.0

Source of Sample Flowline

Rm @ Meas. Temp .60 @ 50

Rmf @ Meas. Temp .45 @ 50

Rmc @ Meas. Temp .81 @ 50

Source of Rmf / Rmc Charts

Rm @ BHT .27 @ 113

Operating Rig Time 5 Hours

Max Rec. Temp. F 113

Equipment Number 15

Location Hays

Recorded By D.Kerr

Witnessed By Robert Hendrix

<<< Fold Here >>>

All interpretations are opinions based on inferences from electrical or other measurements and we cannot and do not guarantee the accuracy or correctness of any interpretation, and we shall not, except in the case of gross or willful negligence on our part, be liable or responsible for any loss, costs, damages, or expenses incurred or sustained by anyone resulting from any interpretation made by any of our officers, agents or employees. These interpretations are also subject to our general terms and conditions set out in our current Price Schedule.

## Comments

Thank you for using Pioneer Energy Services  
www.pioneerenergy.com  
785 625 3858

Schoenchen KS, 3 West to 210 RD,  
1 South to County Line, East Into

Database File: c:\warrior\data\murfin\_braun #1-36\murfin\_braun\_1\_36hd.db  
Dataset Pathname: DIL\murfstk  
Presentation Format: dil2in  
Dataset Creation: Sun Jan 13 03:15:05 2013  
Charted by: Depth in Feet scaled 1:600

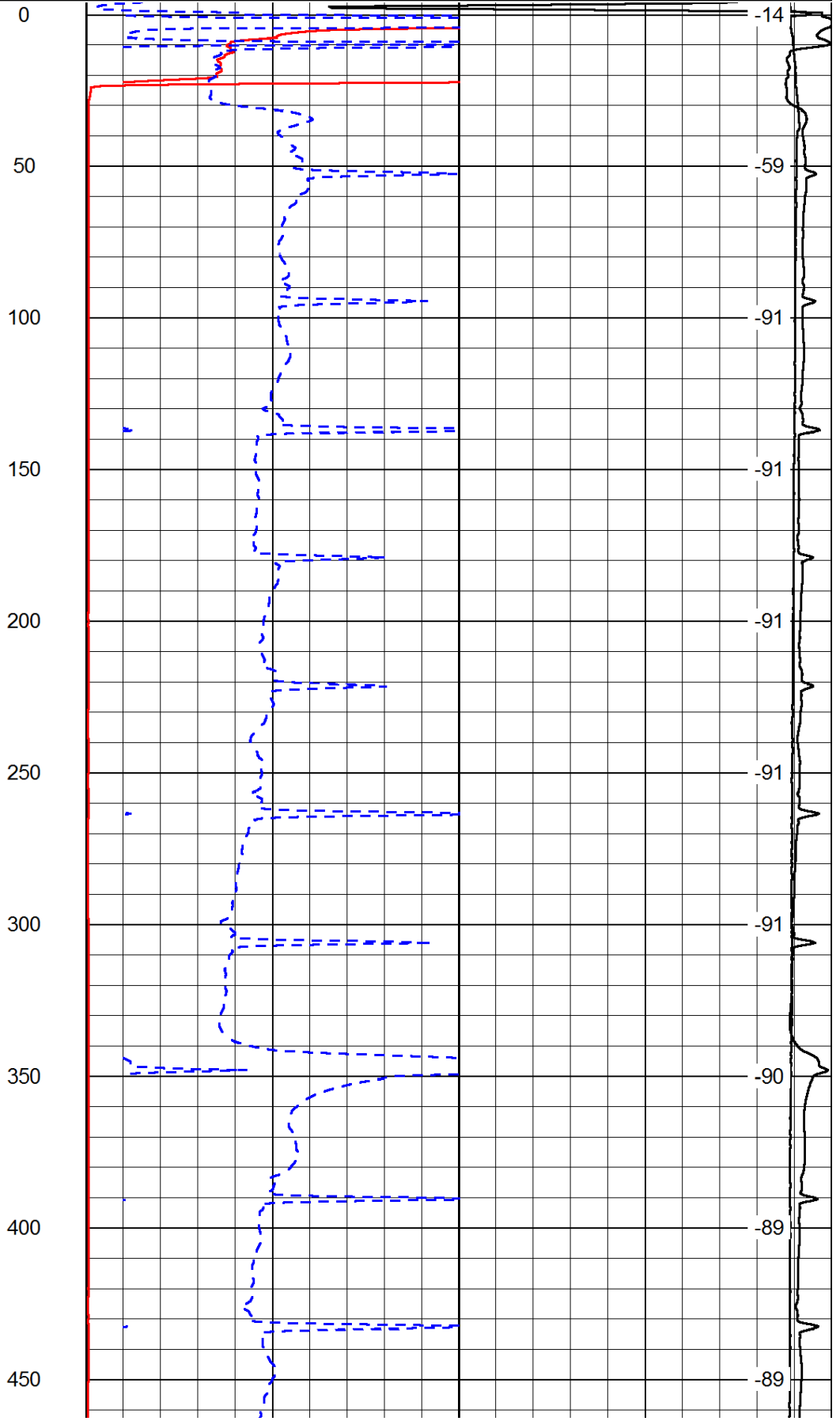
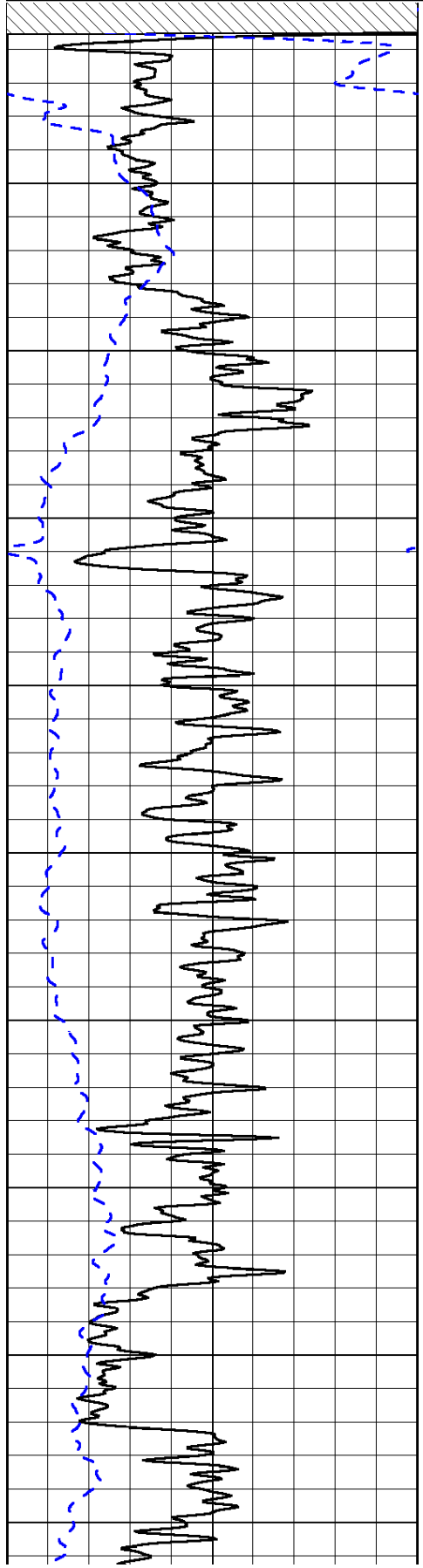
0	Gamma Ray	150
-200	SP (mV)	0

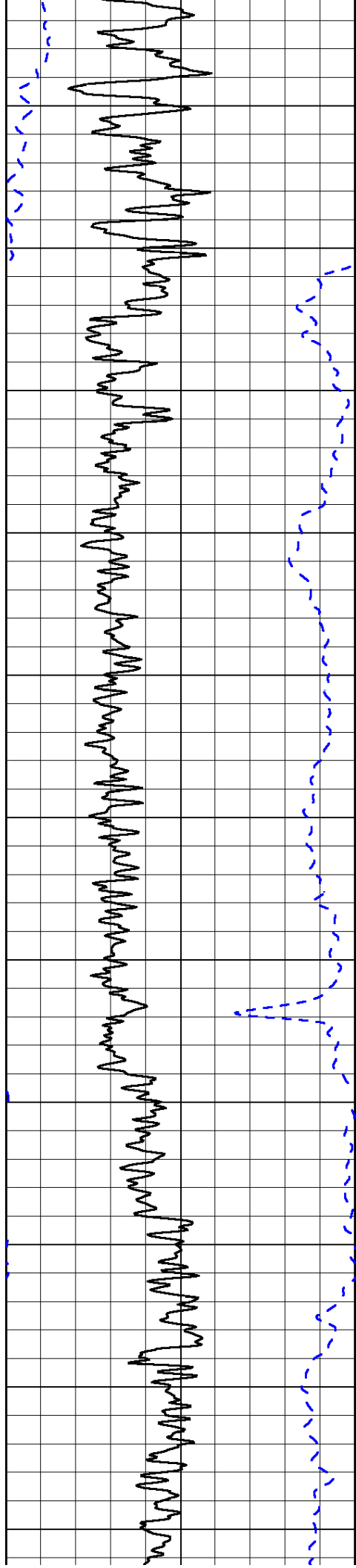
0	Shallow Resistivity	50
0	Deep Resistivity	50

LSPD

1000	Conductivity	0
15000	Line Tension	0

50	Shallow Resistivity	500
50	Deep Resistivity	500





500

550

600

650

700

750

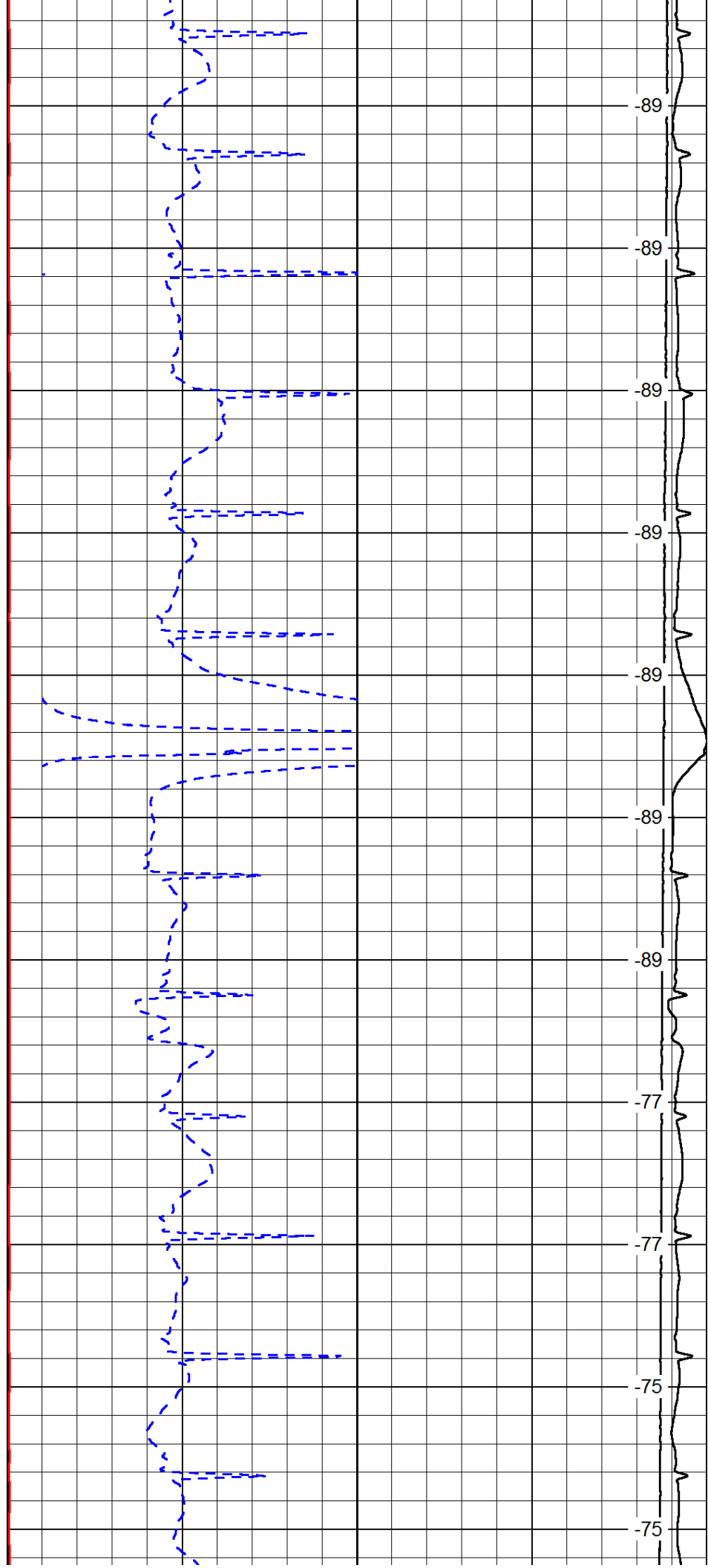
800

850

900

950

1000



-89

-89

-89

-89

-89

-89

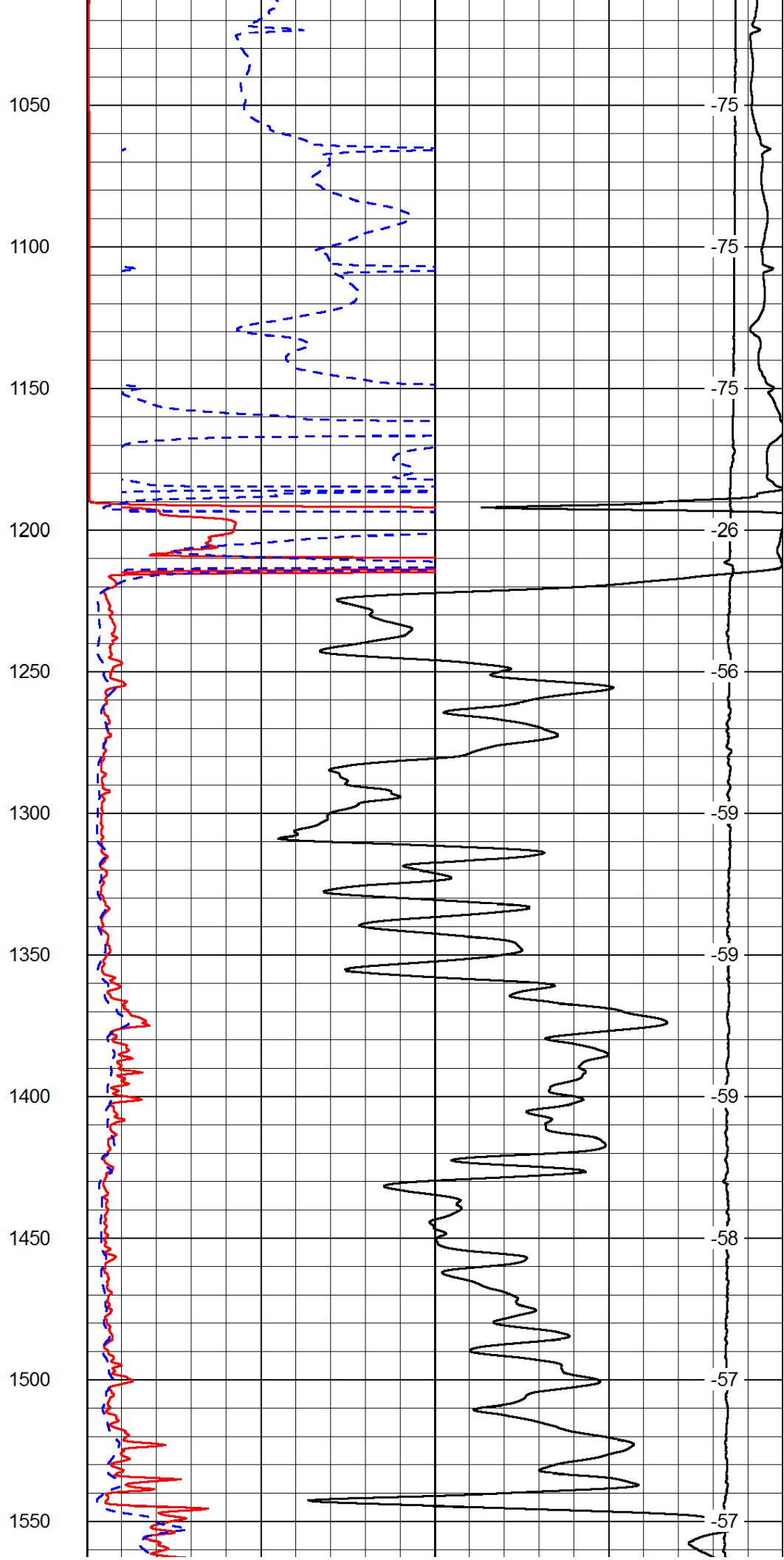
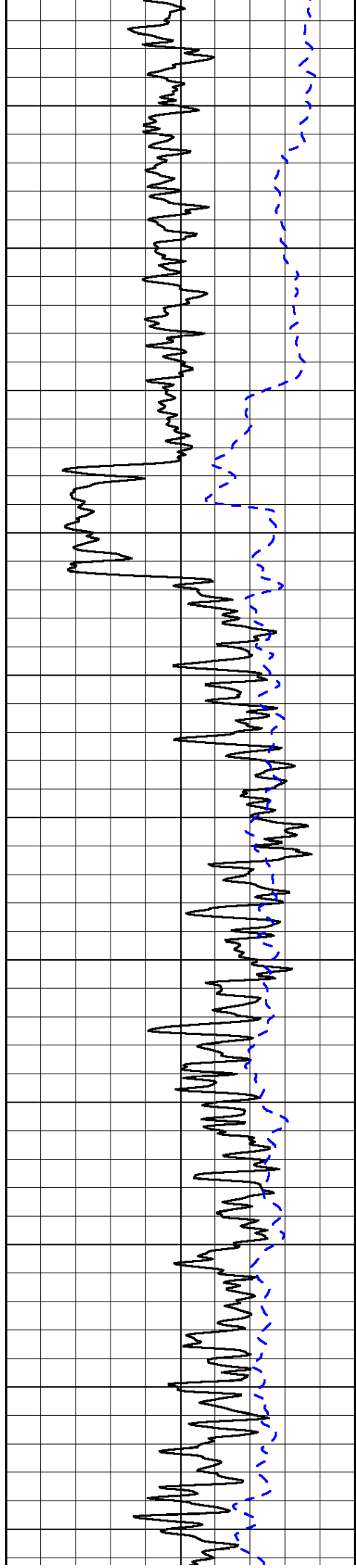
-89

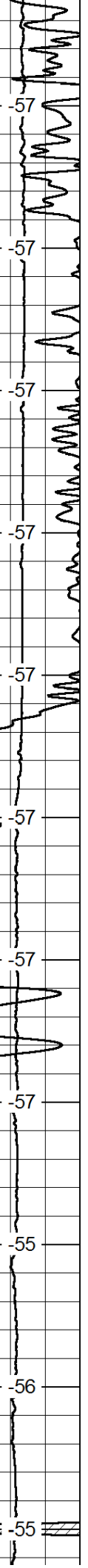
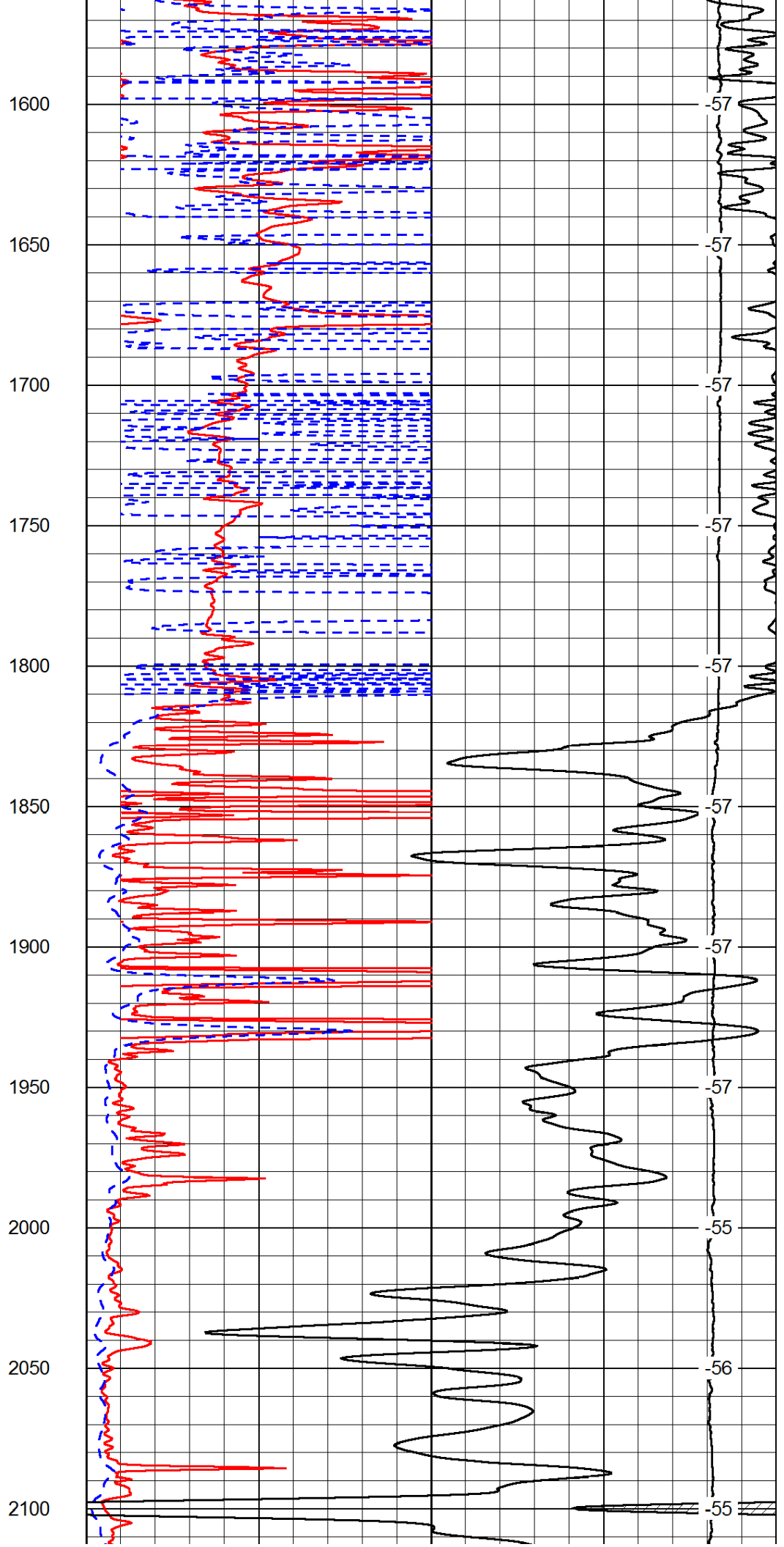
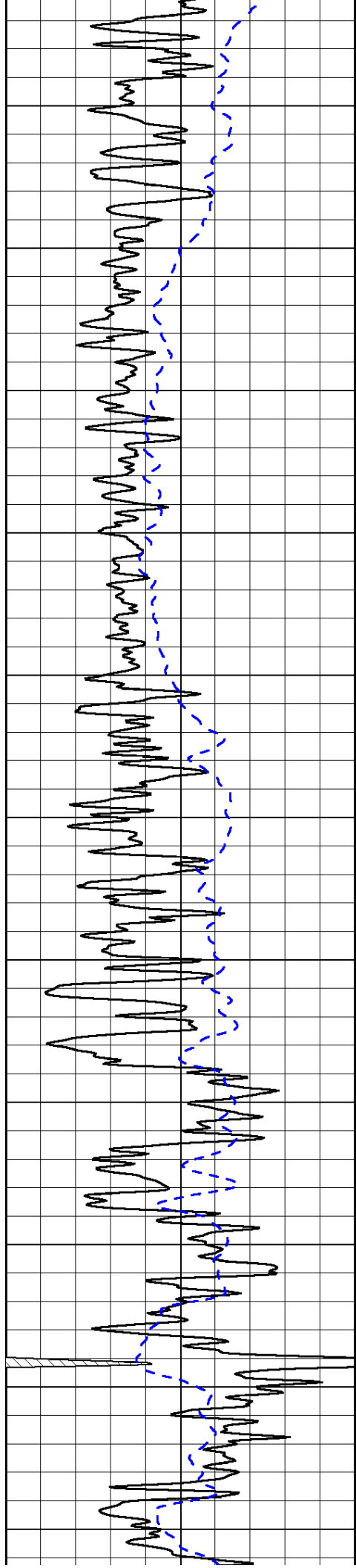
-89

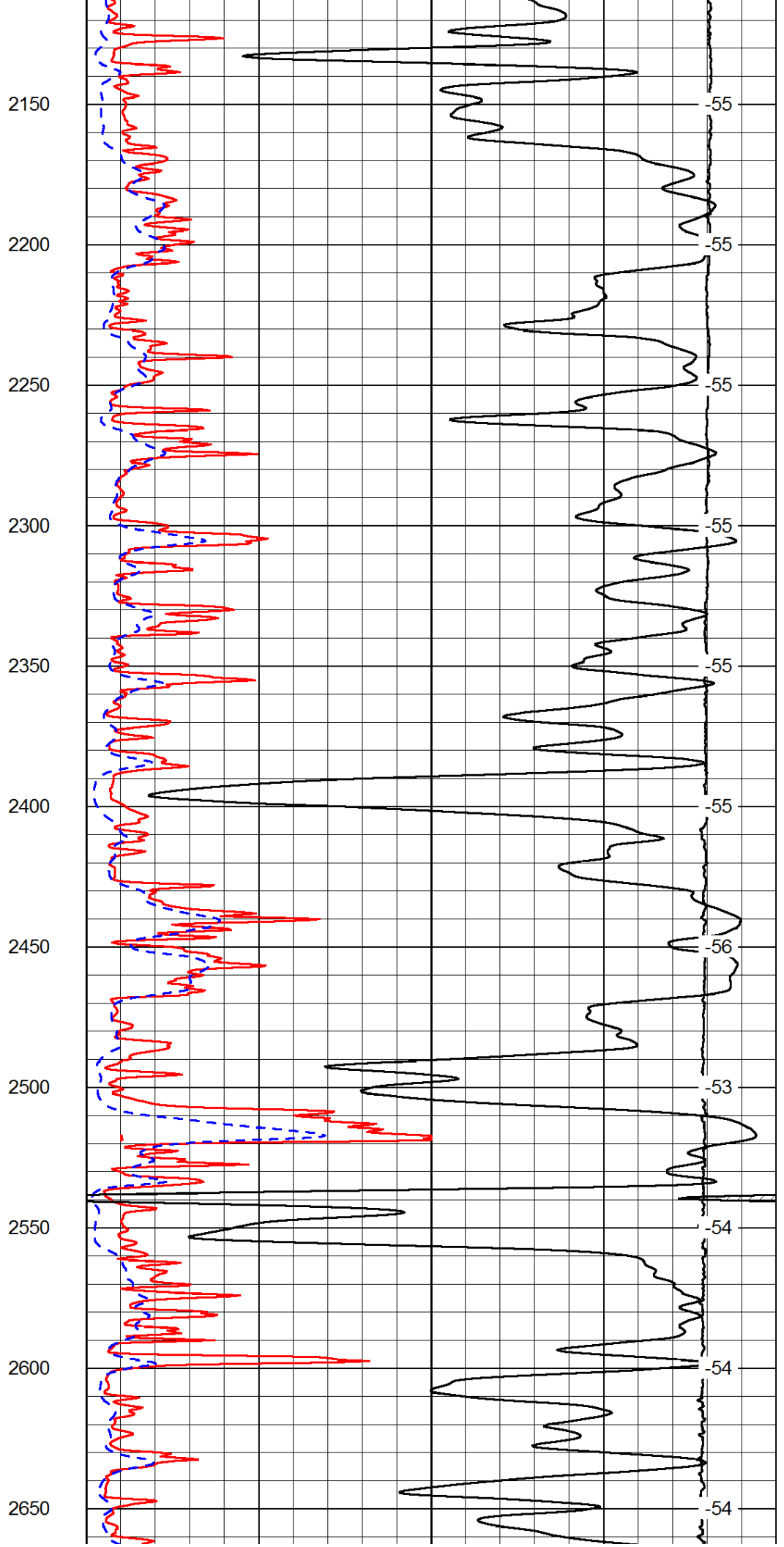
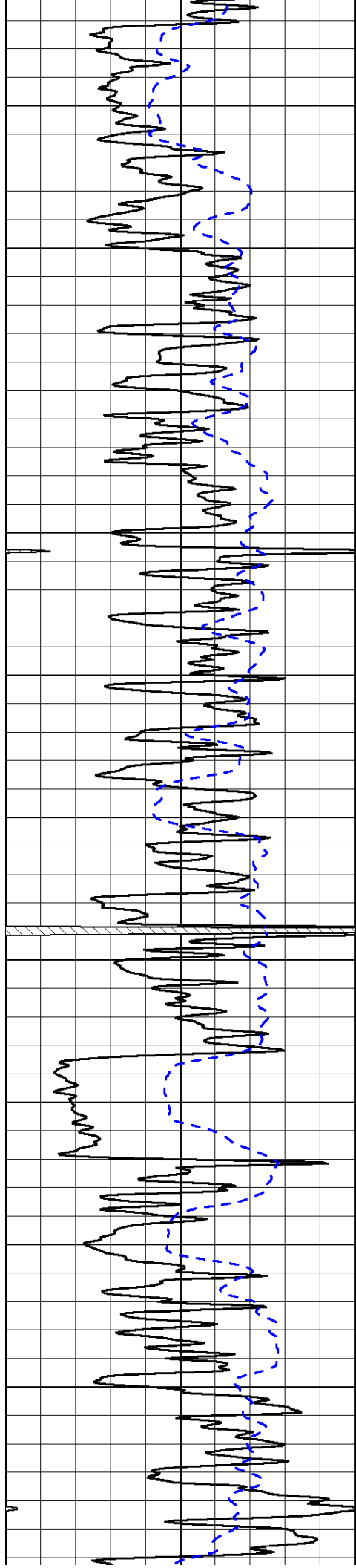
-89

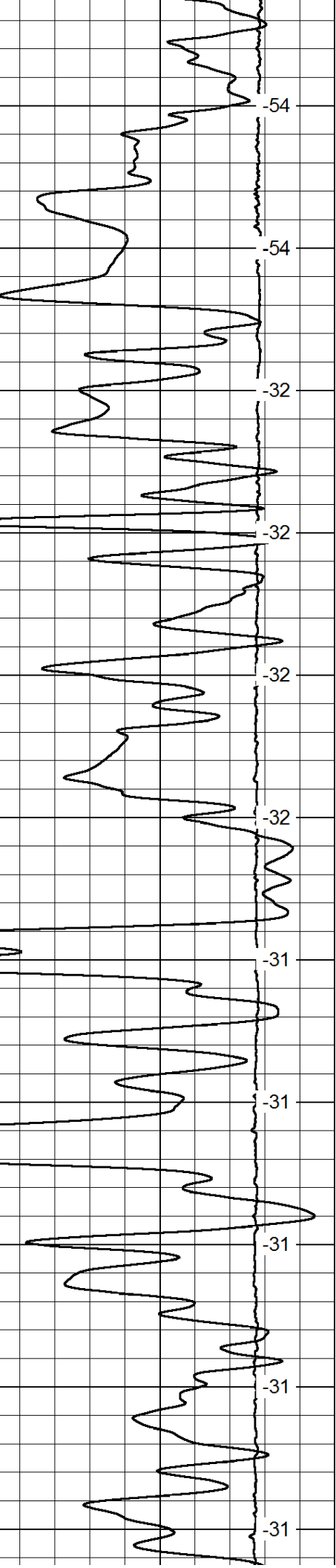
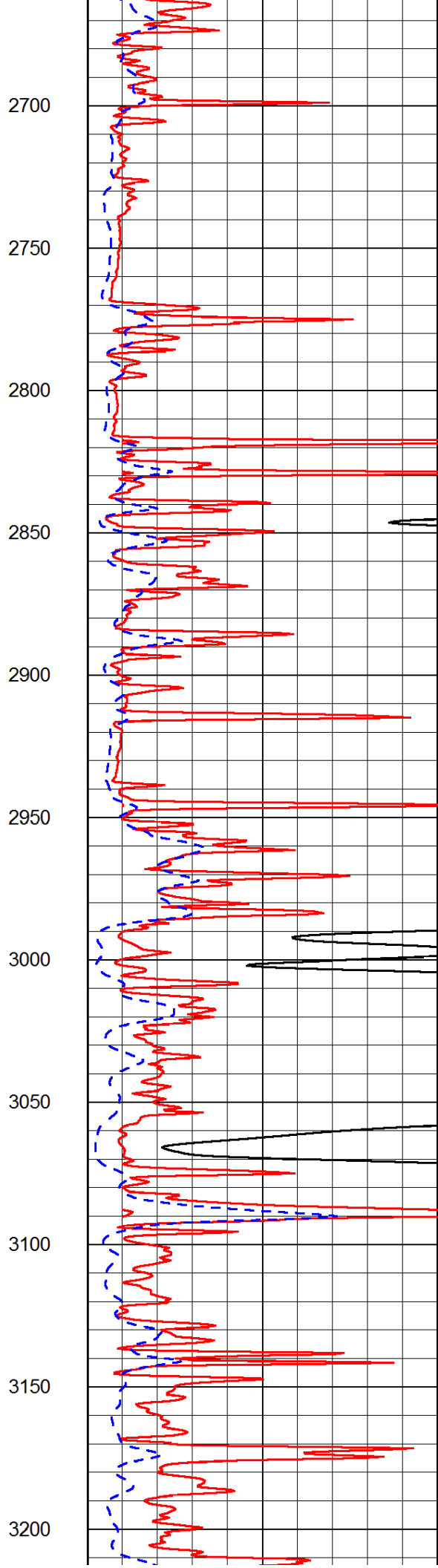
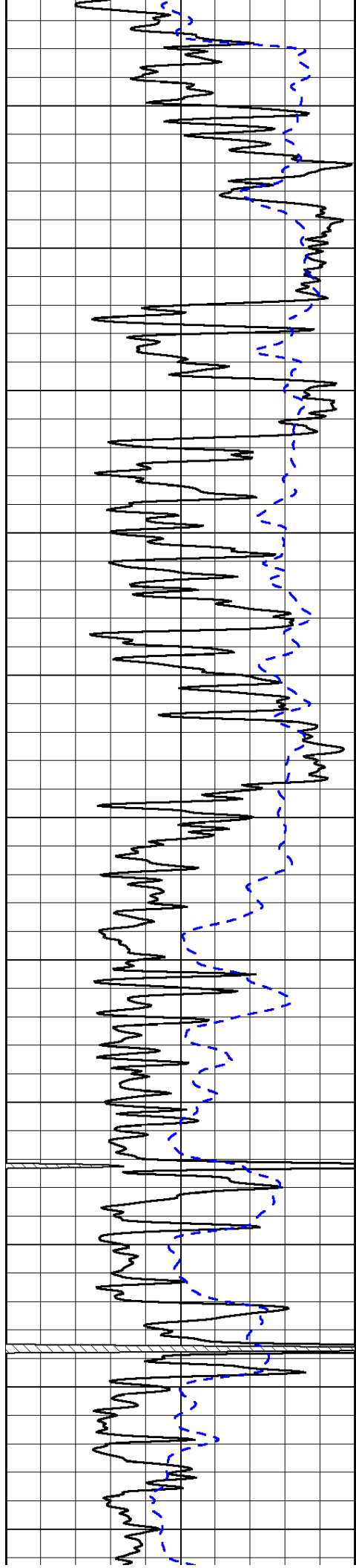
-75

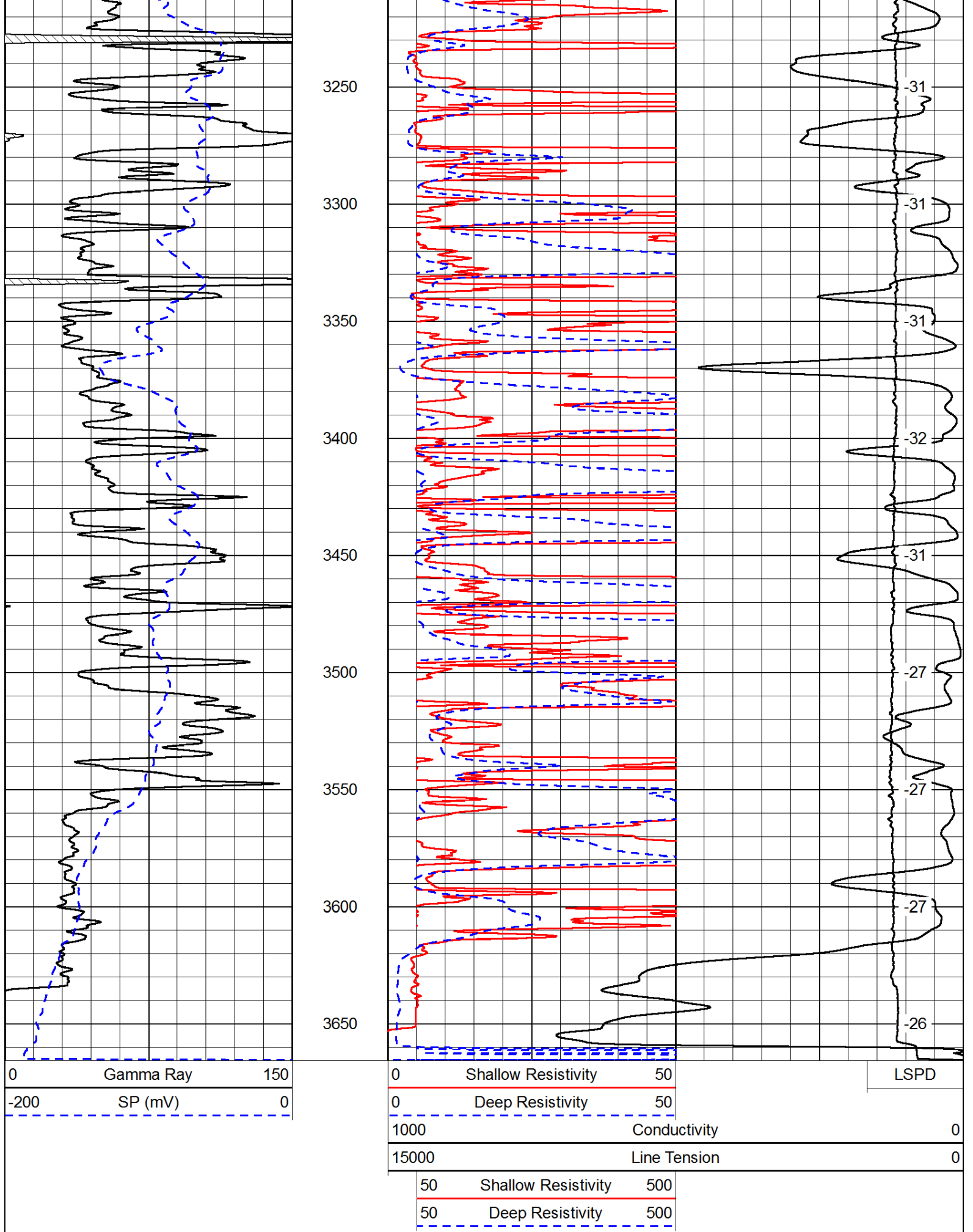
-75









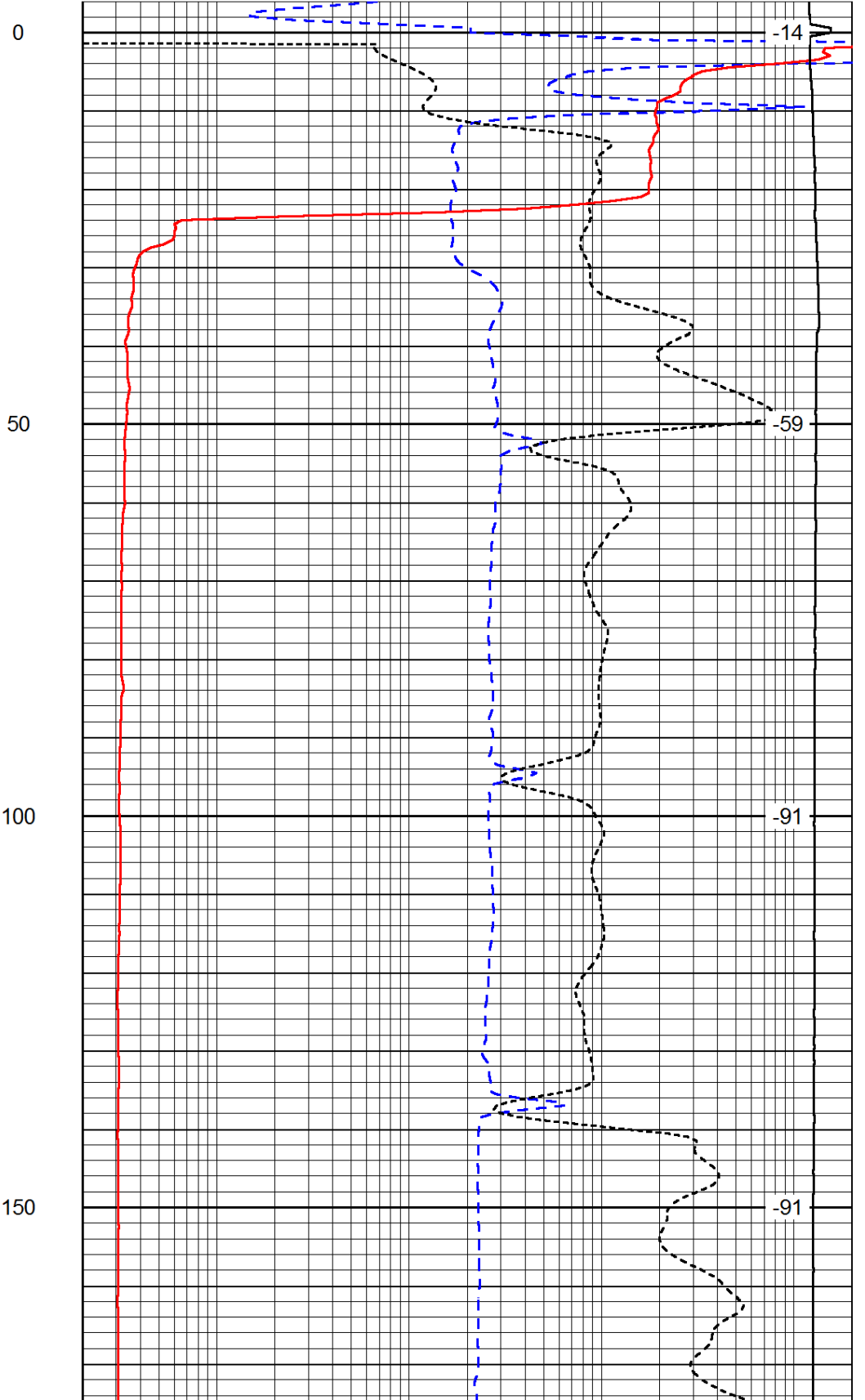
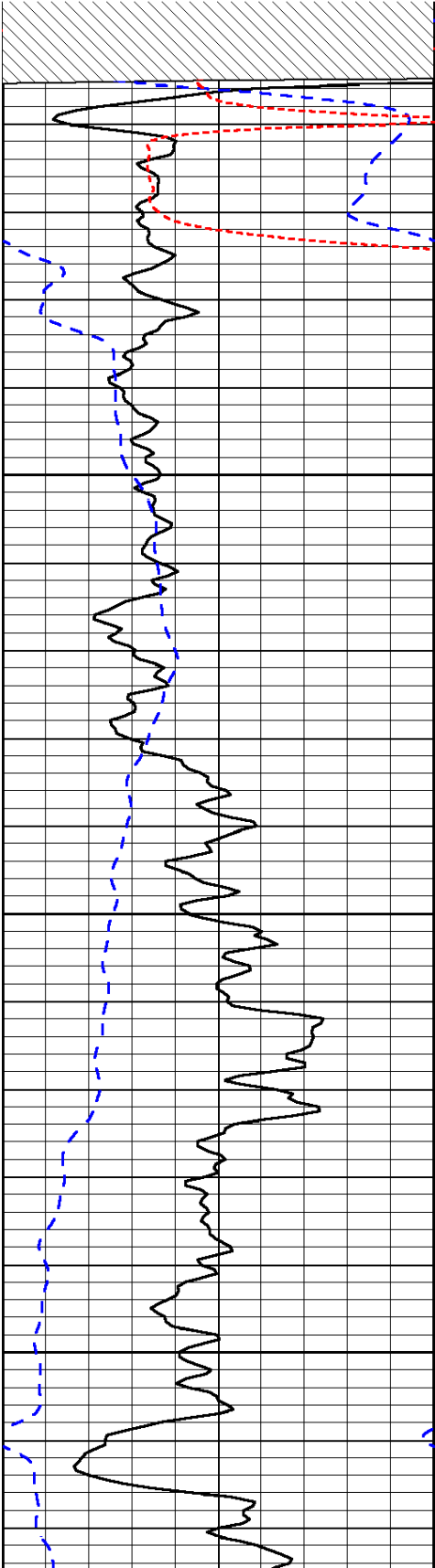


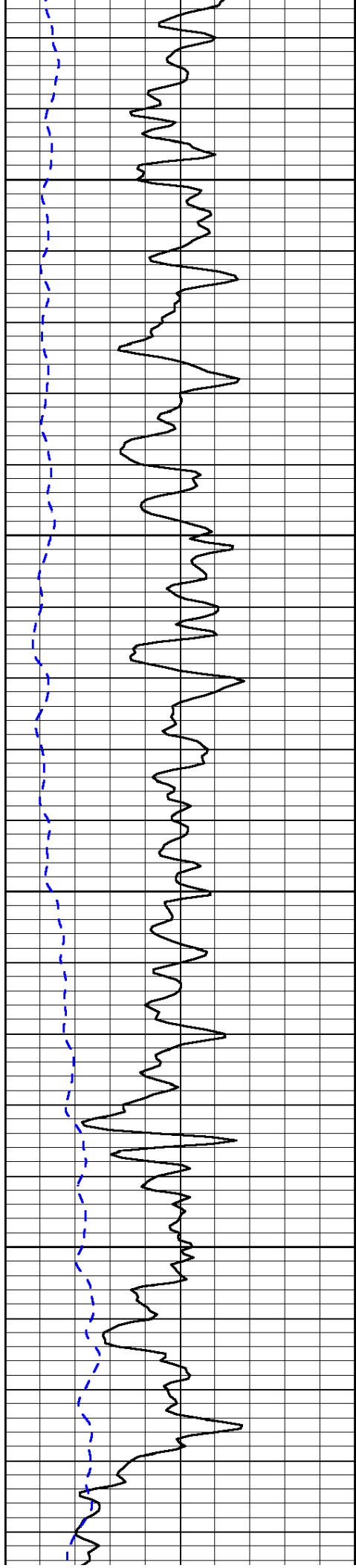
Database File: c:\wam\mdata\main\braun\71\00\main\braun\_1\_cond.us  
 Dataset Pathname: DIL/murfstk  
 Presentation Format: dil  
 Dataset Creation: Sun Jan 13 03:15:05 2013  
 Charted by: Depth in Feet scaled 1:240

0	Gamma Ray	150
-200	SP (mV)	0
-160	RxoRt	40

0.2	Deep Resistivity	2000
0.2	Medium Resistivity	2000
0.2	Shallow Resistivity	2000
15000	Line Tension	0

LSPD



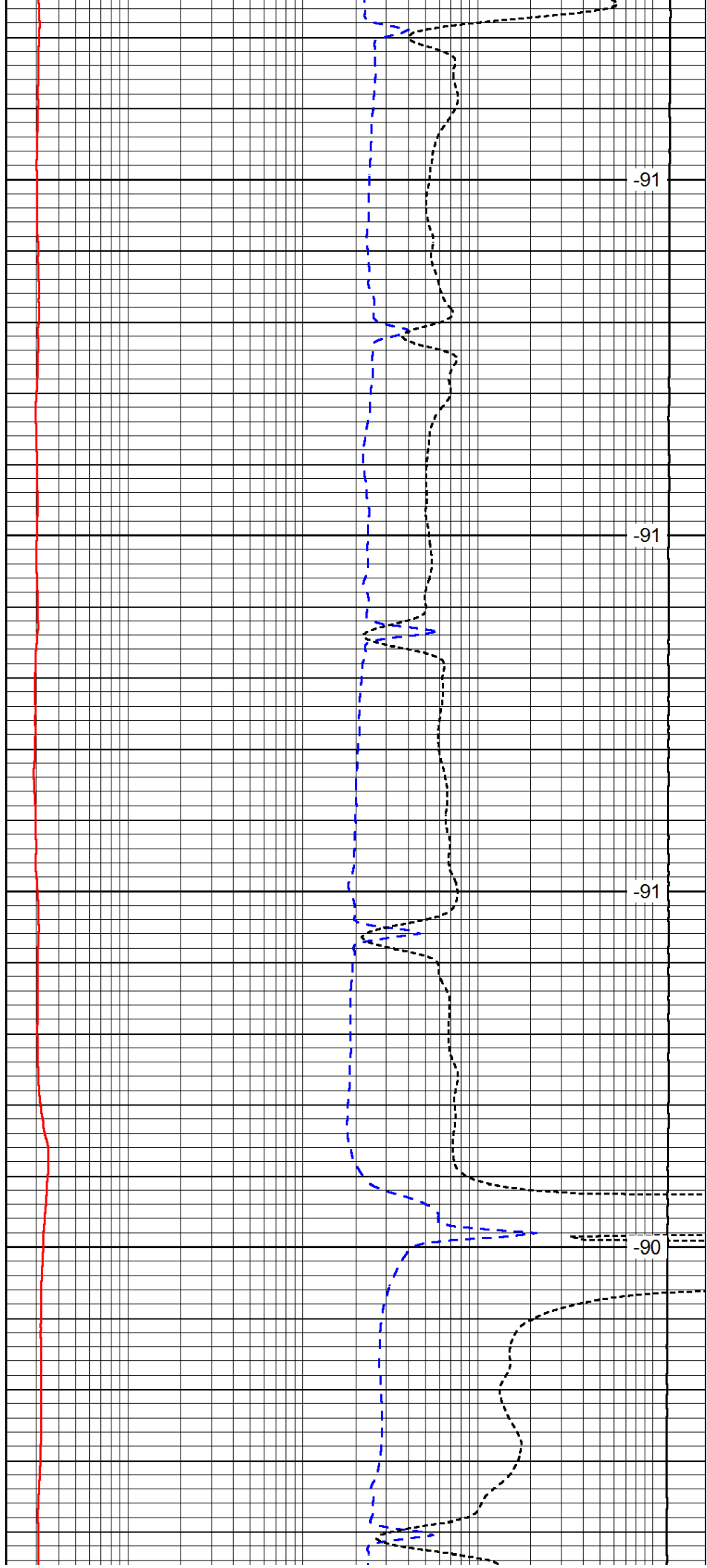


200

250

300

350

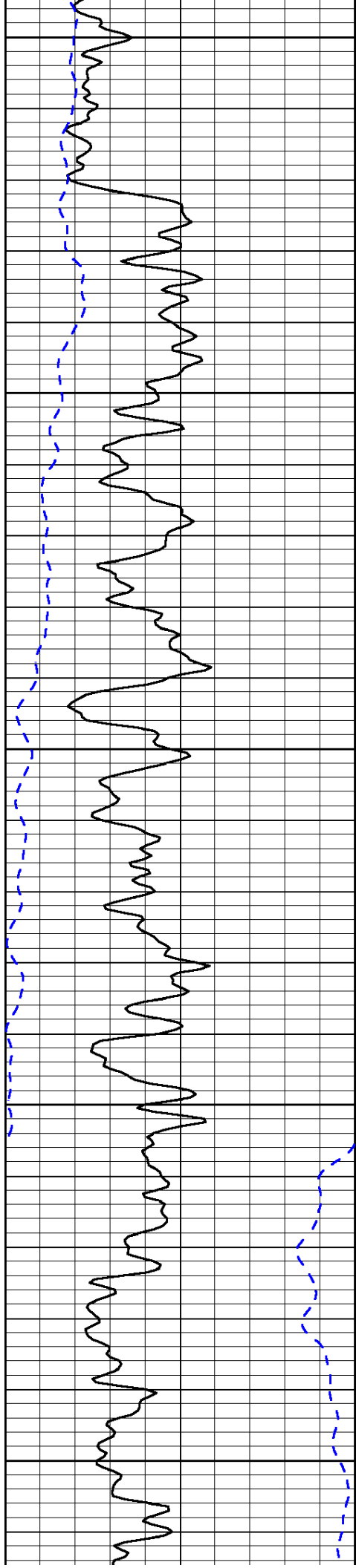


-91

-91

-91

-90



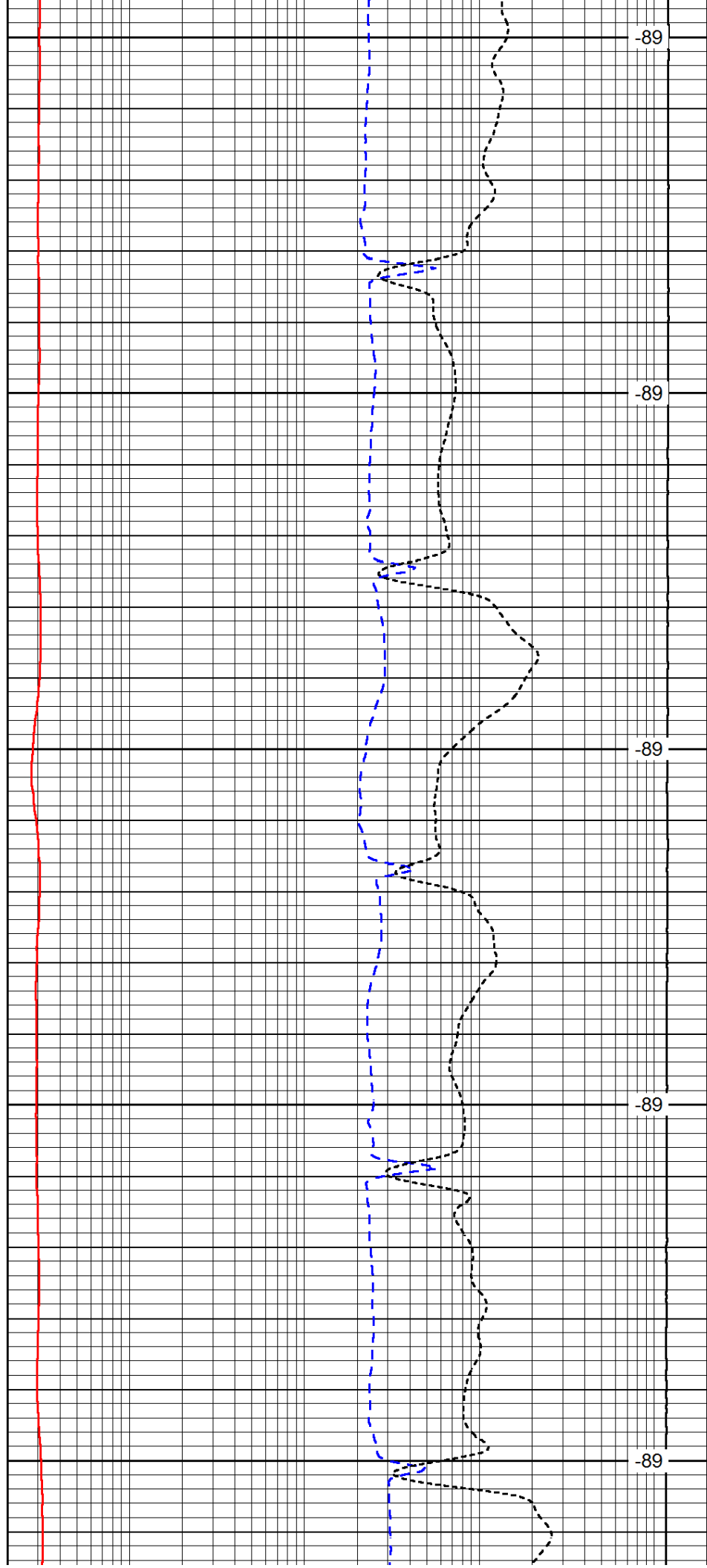
400

450

500

550

600



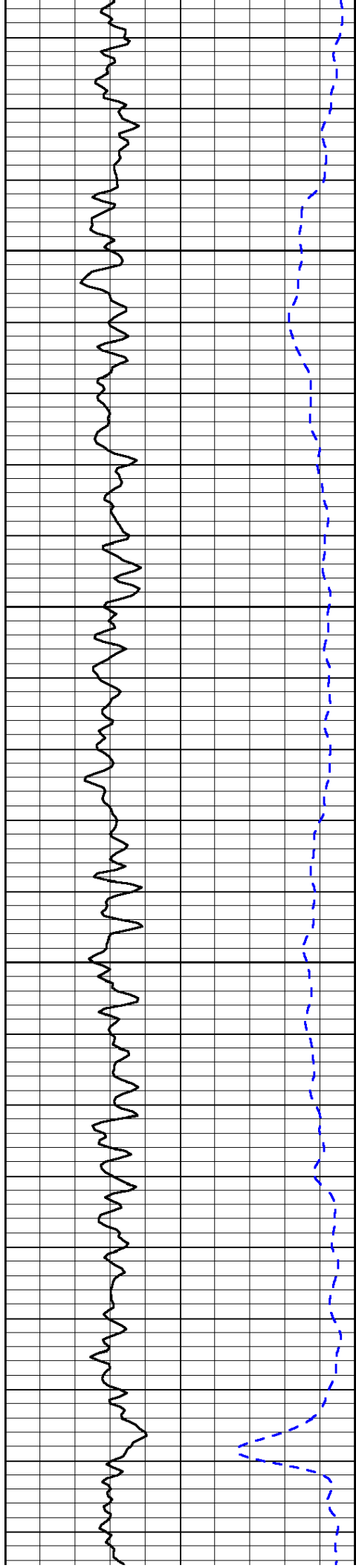
-89

-89

-89

-89

-89

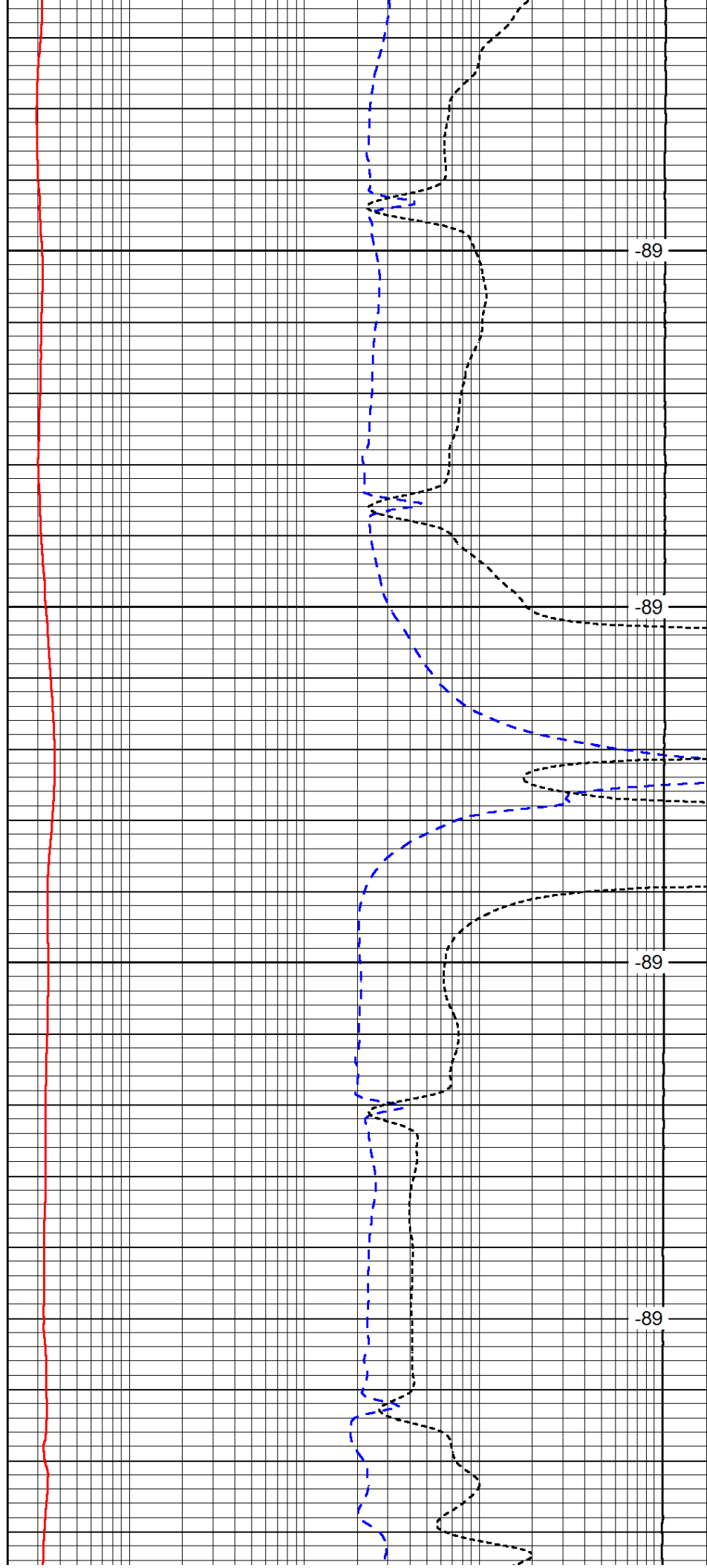


650

700

750

800

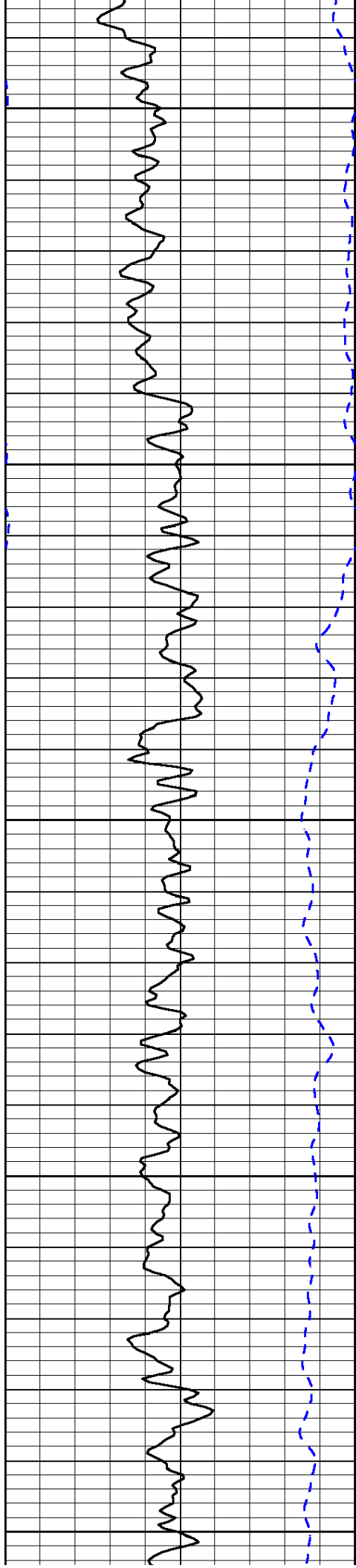


-89

-89

-89

-89



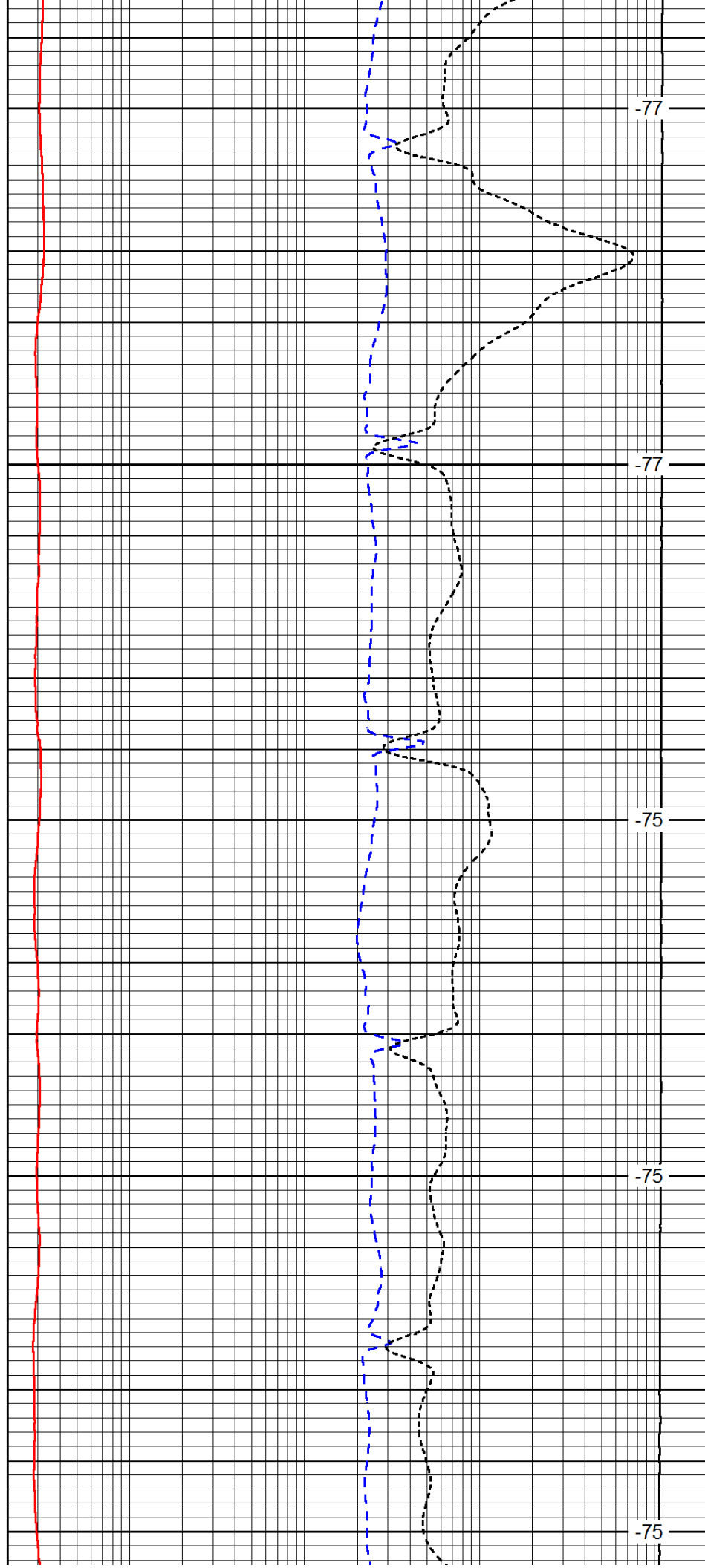
850

900

950

1000

1050



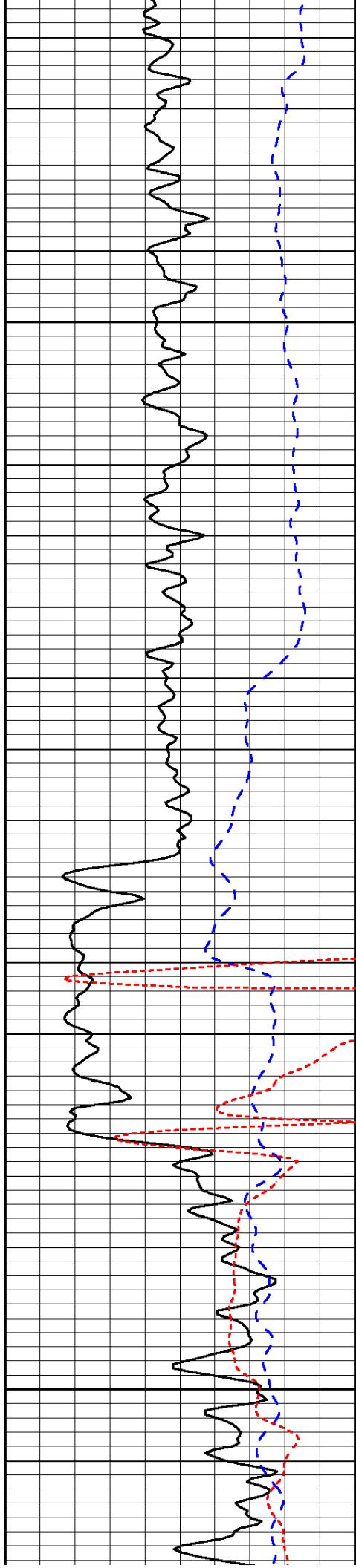
-77

-77

-75

-75

-75

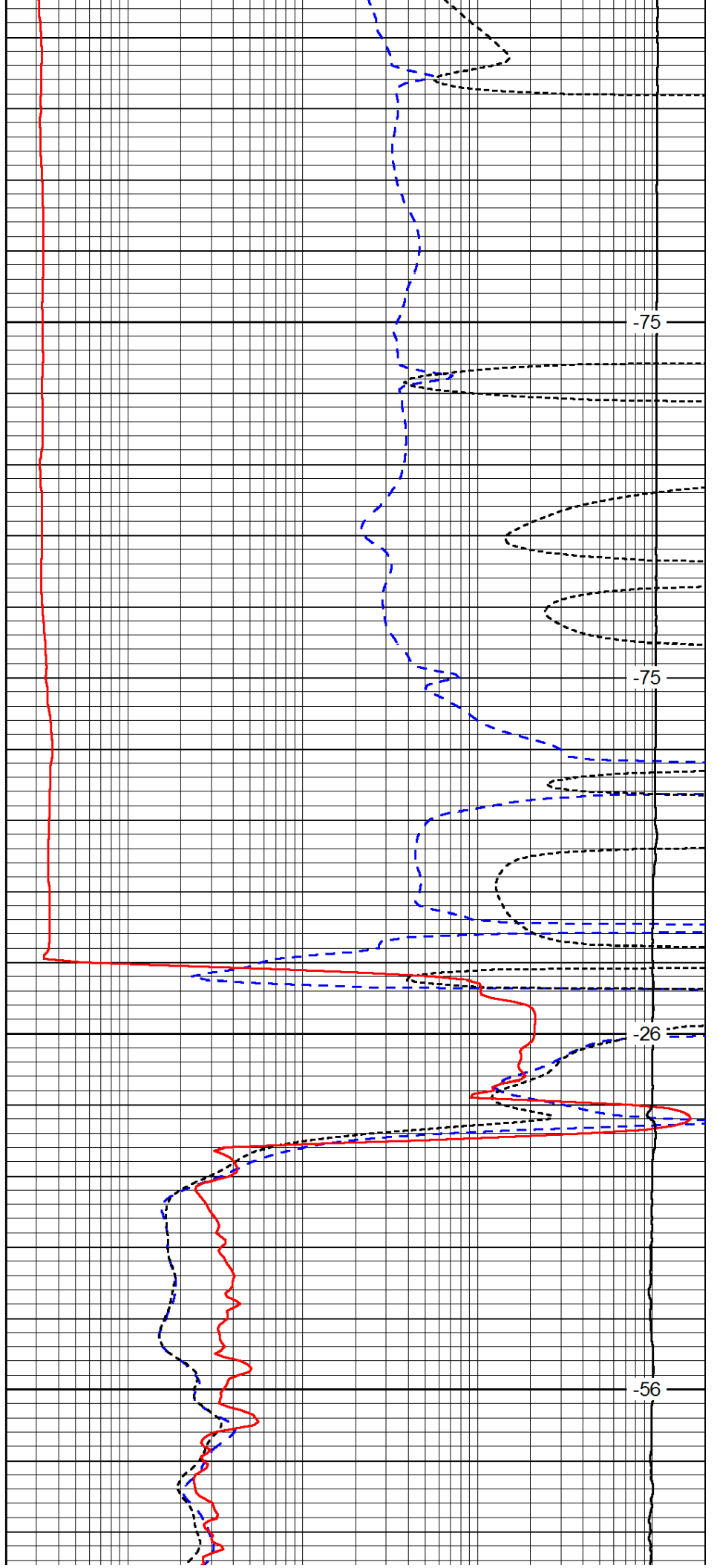


1100

1150

1200

1250

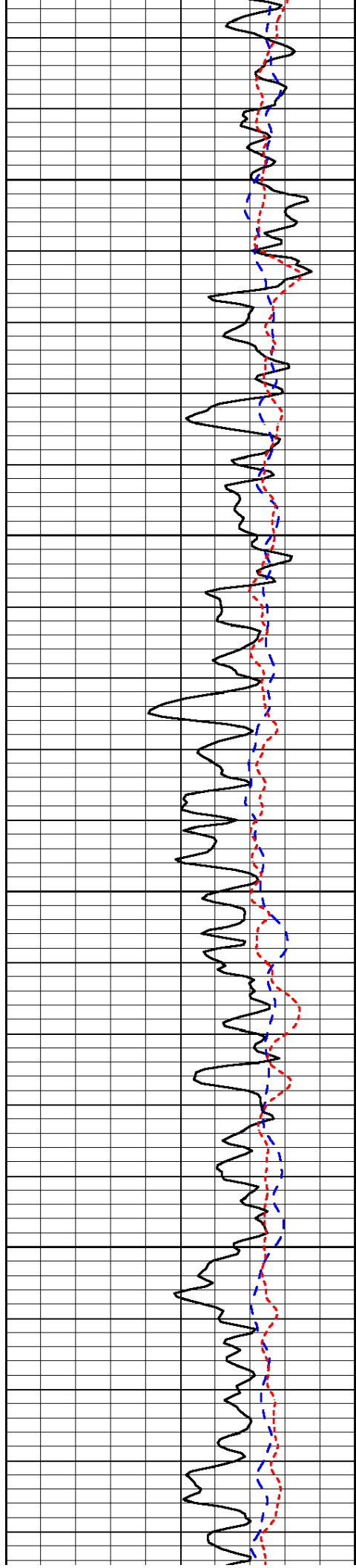


-75

-75

-26

-56

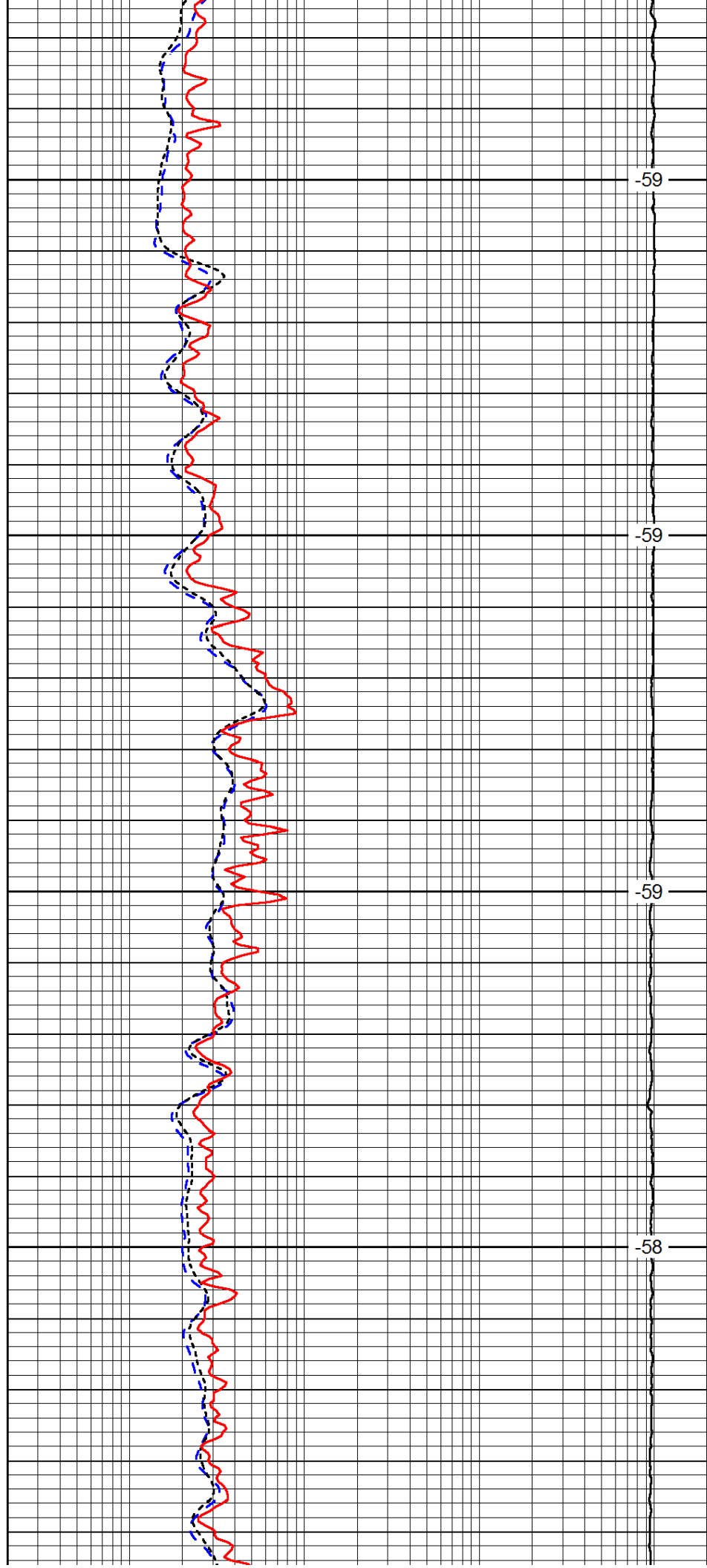


1300

1350

1400

1450

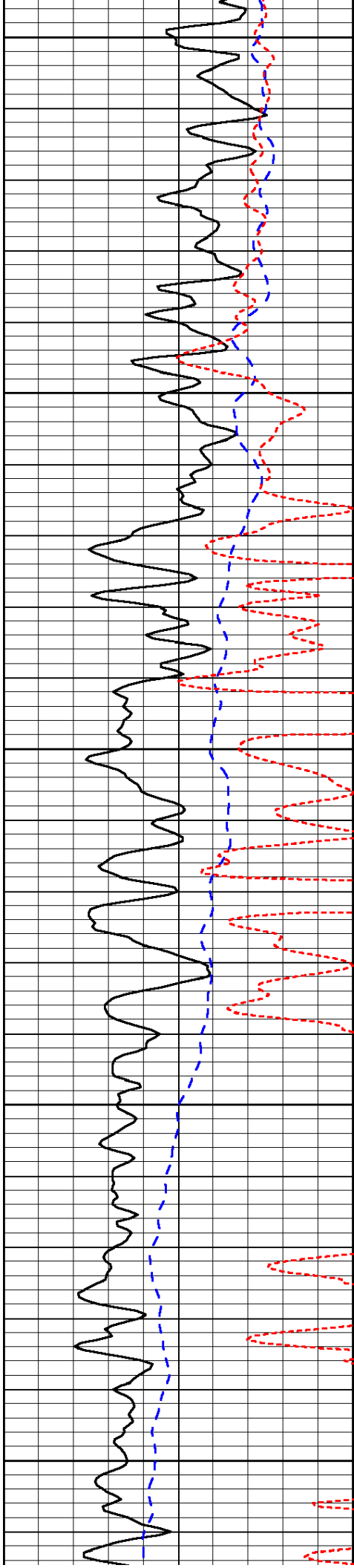


-59

-59

-59

-58



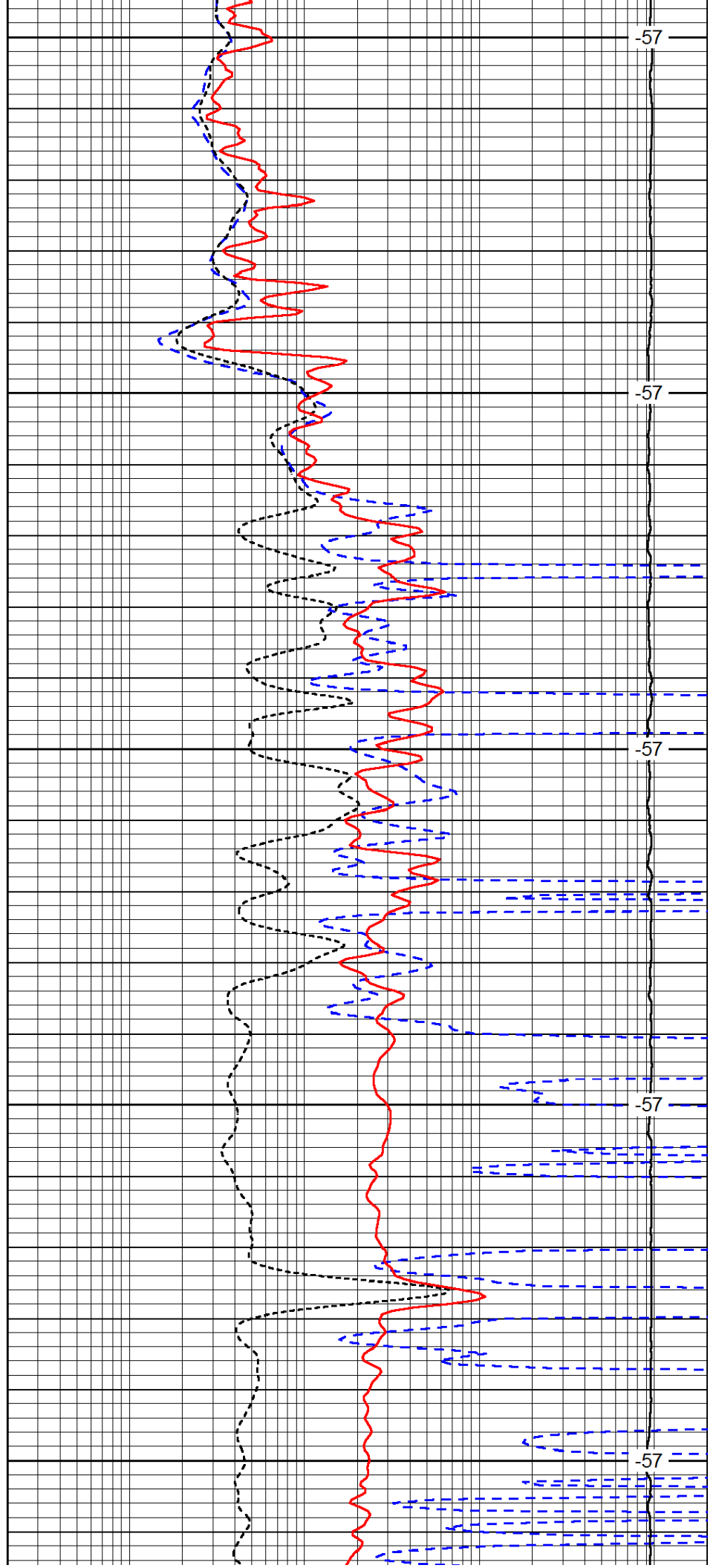
1500

1550

1600

1650

1700



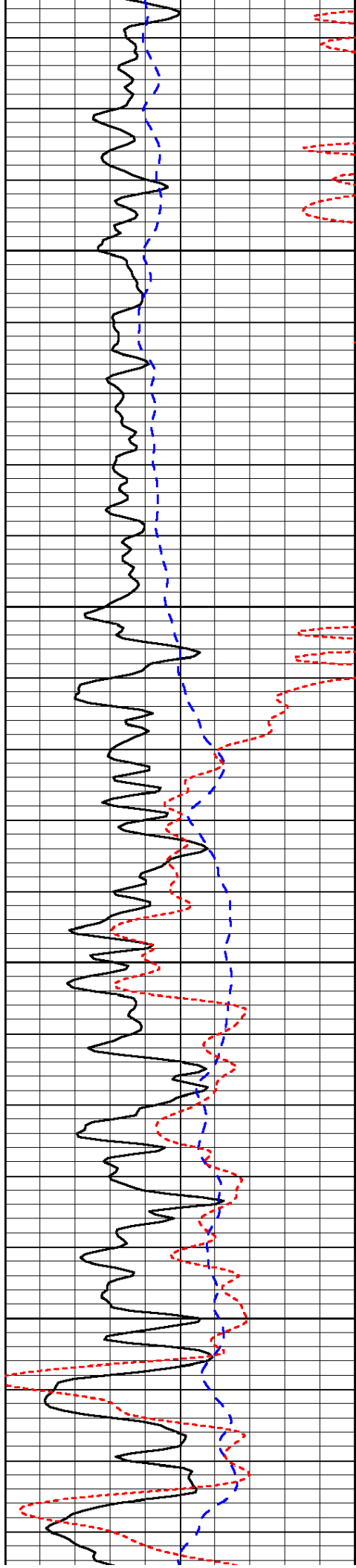
-57

-57

-57

-57

-57

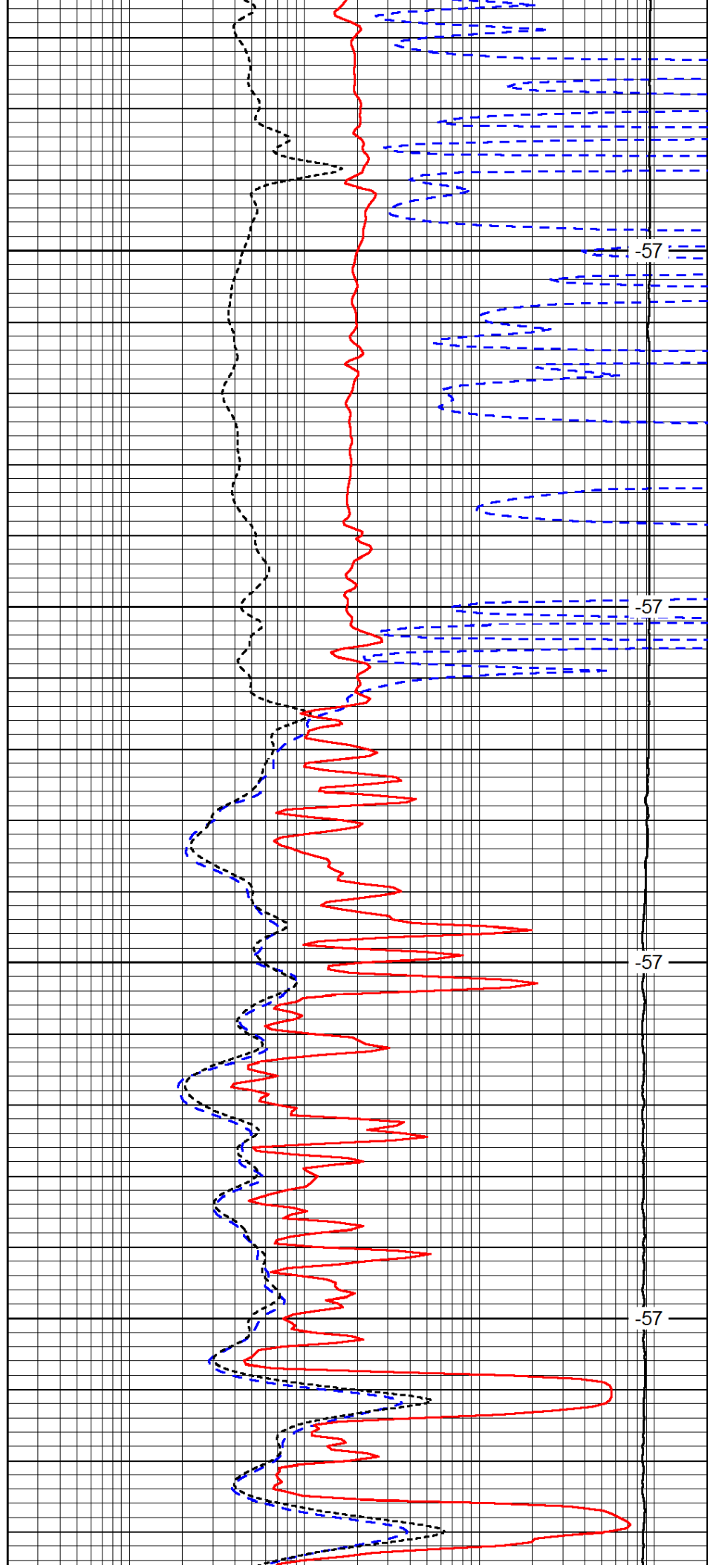


1750

1800

1850

1900

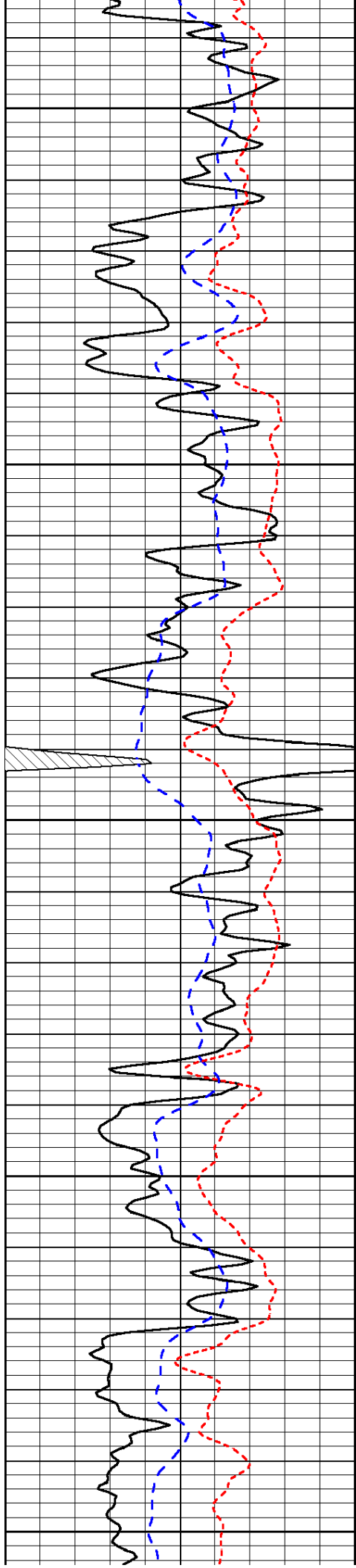


57

57

57

57



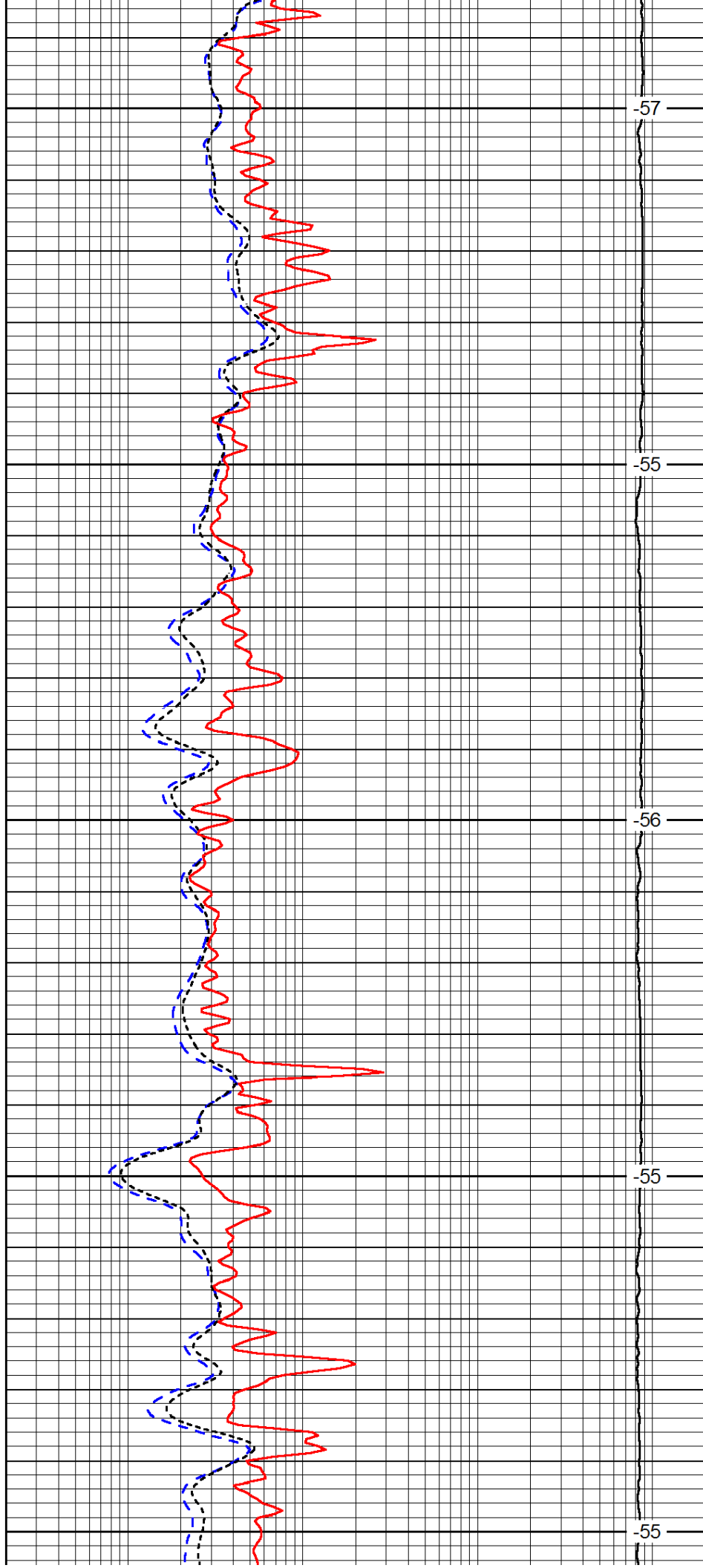
1950

2000

2050

2100

2150



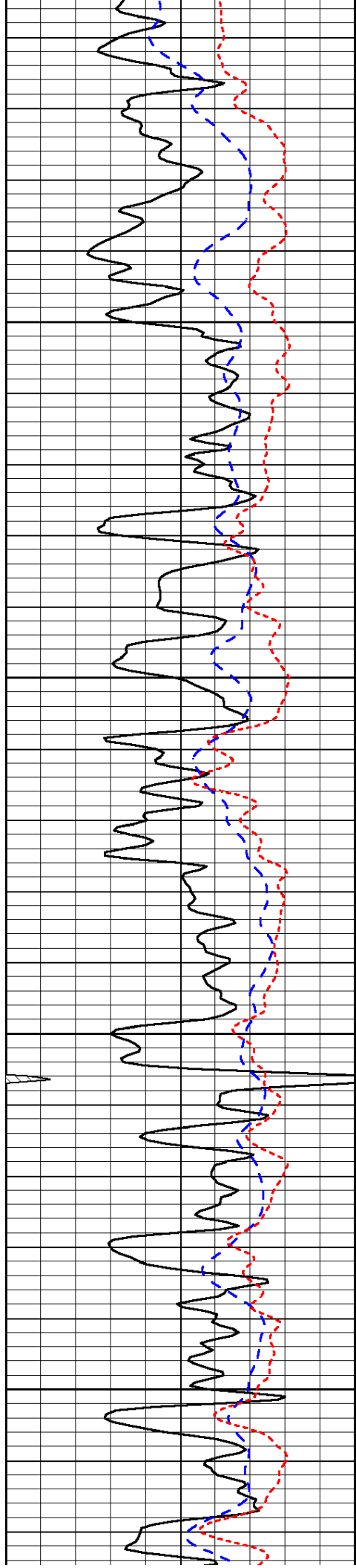
-57

-55

-56

-55

-55

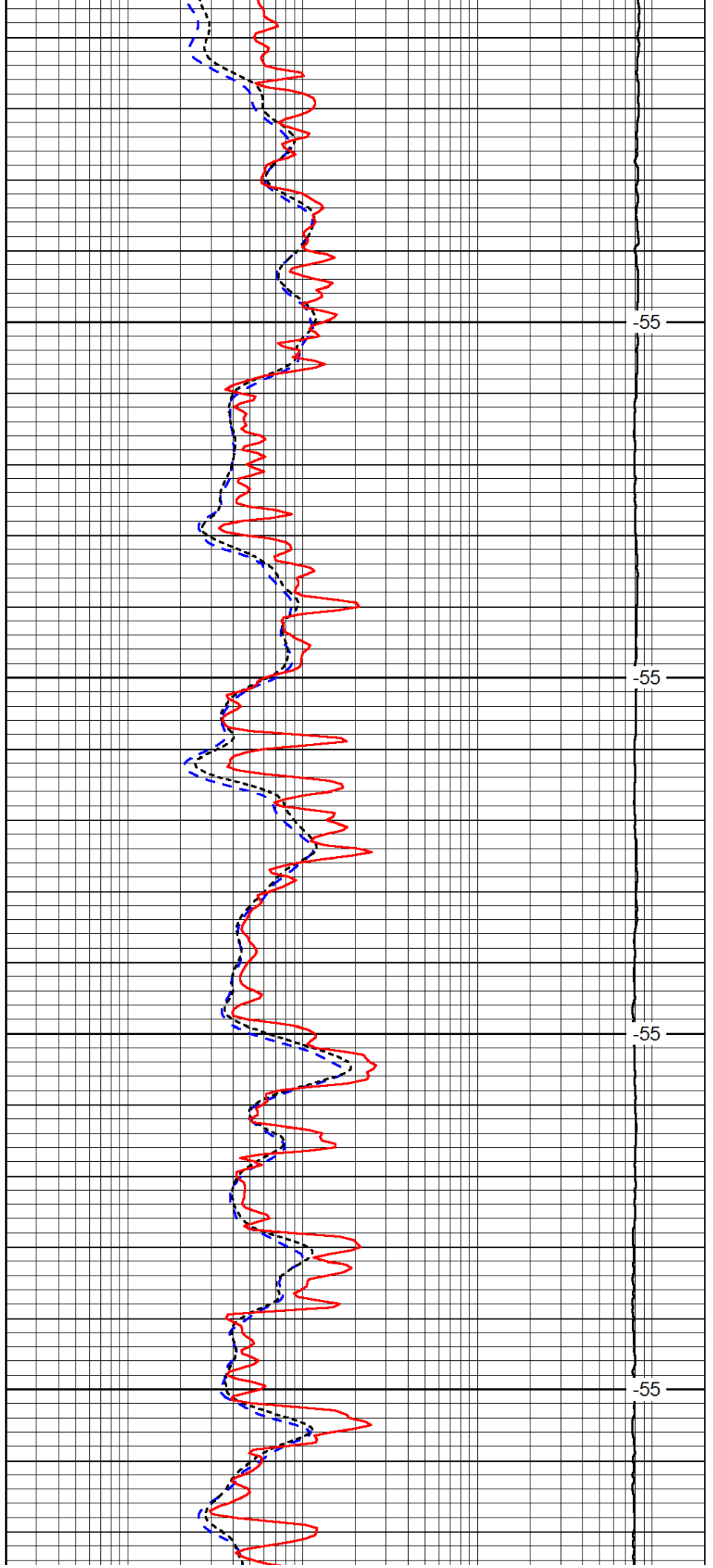


2200

2250

2300

2350

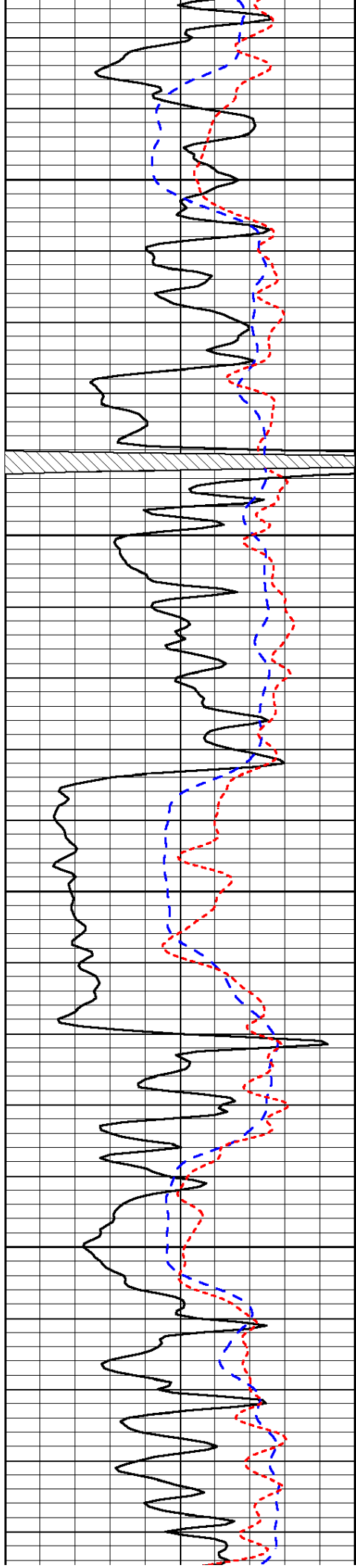


-55

-55

-55

-55

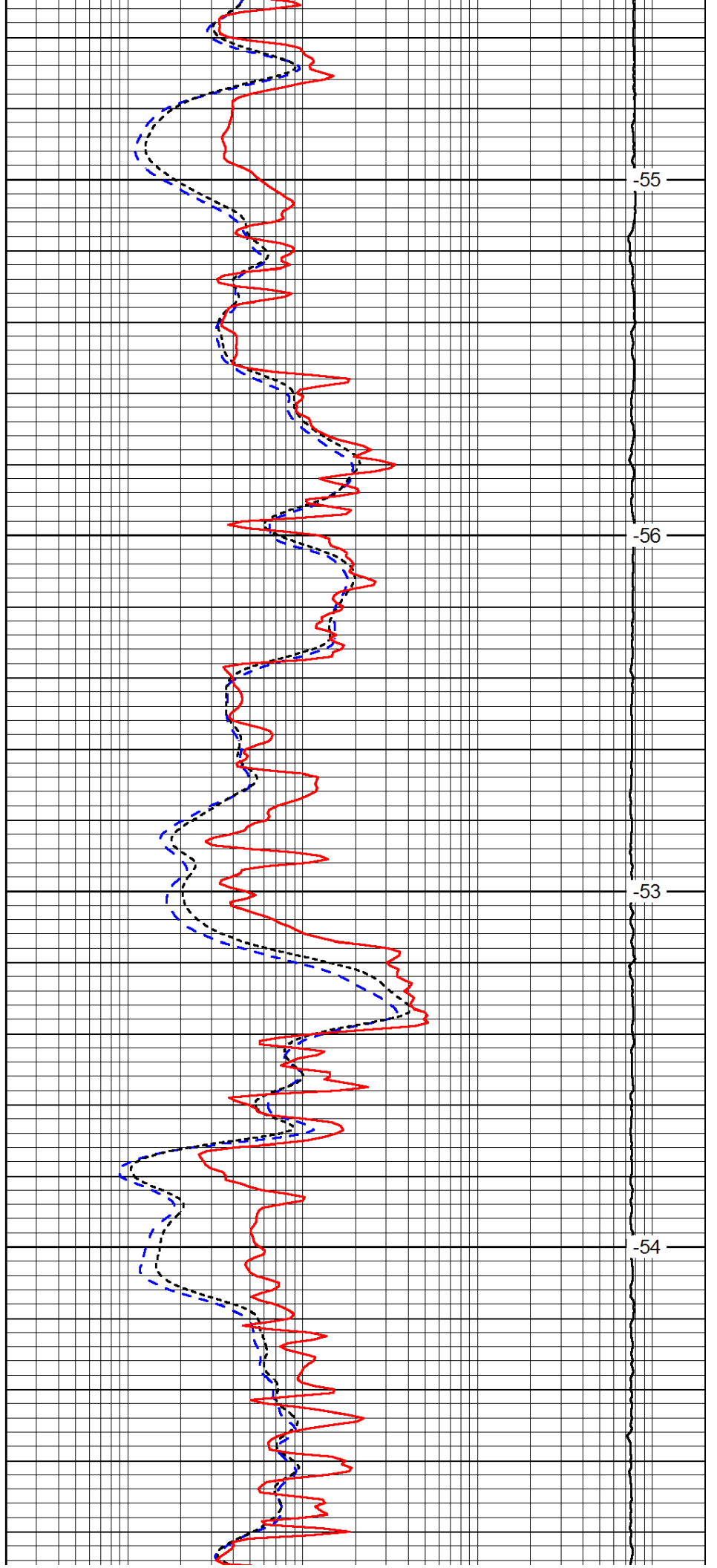


2400

2450

2500

2550

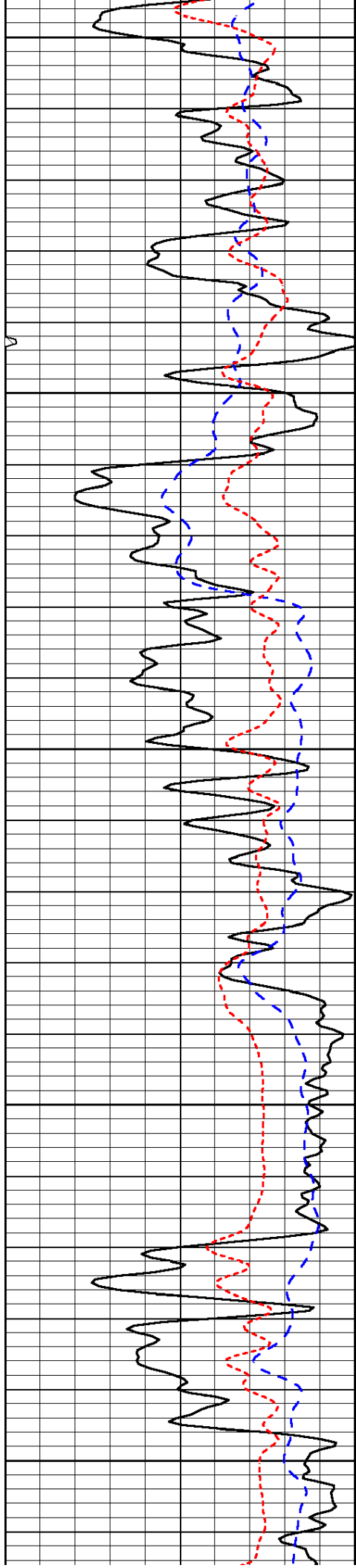


55

56

53

54



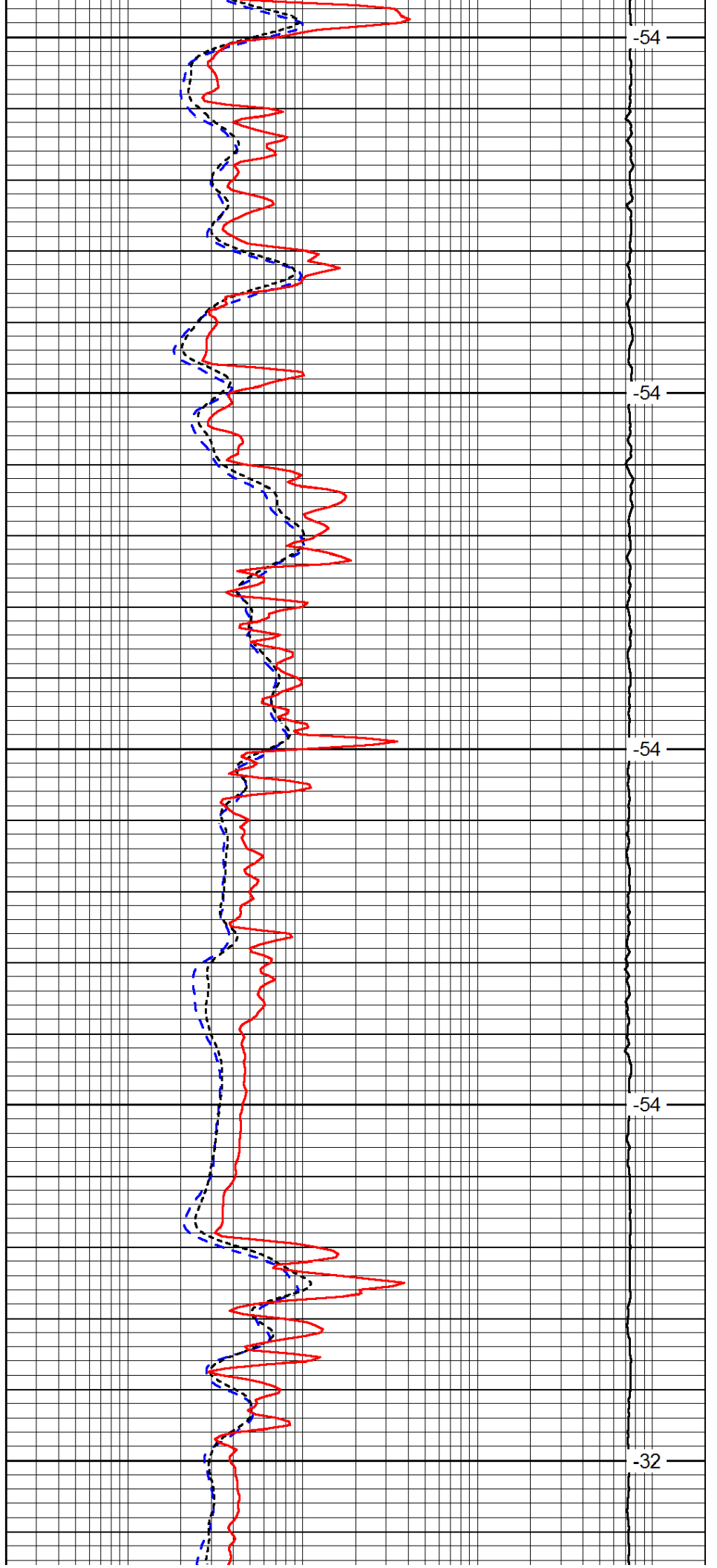
2600

2650

2700

2750

2800



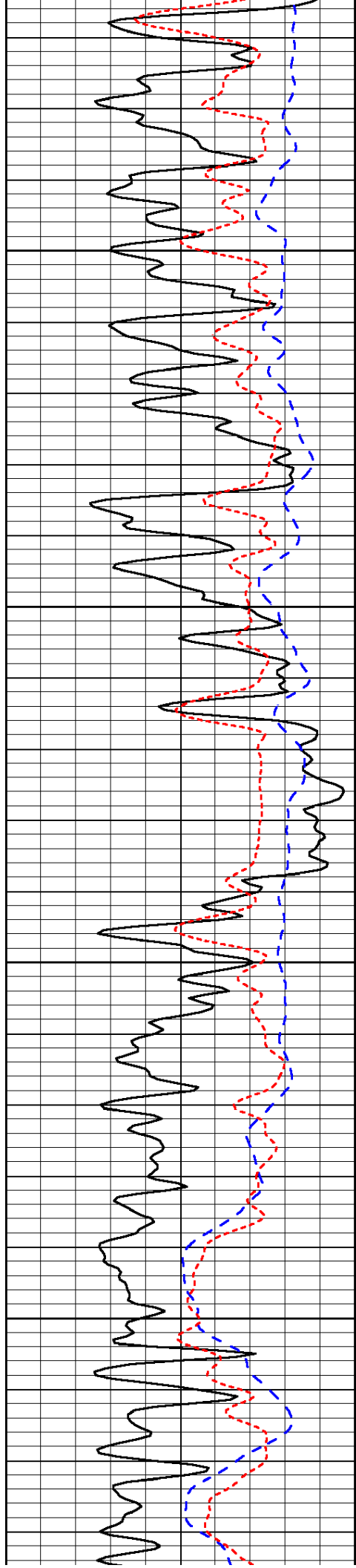
-54

-54

-54

-54

-32

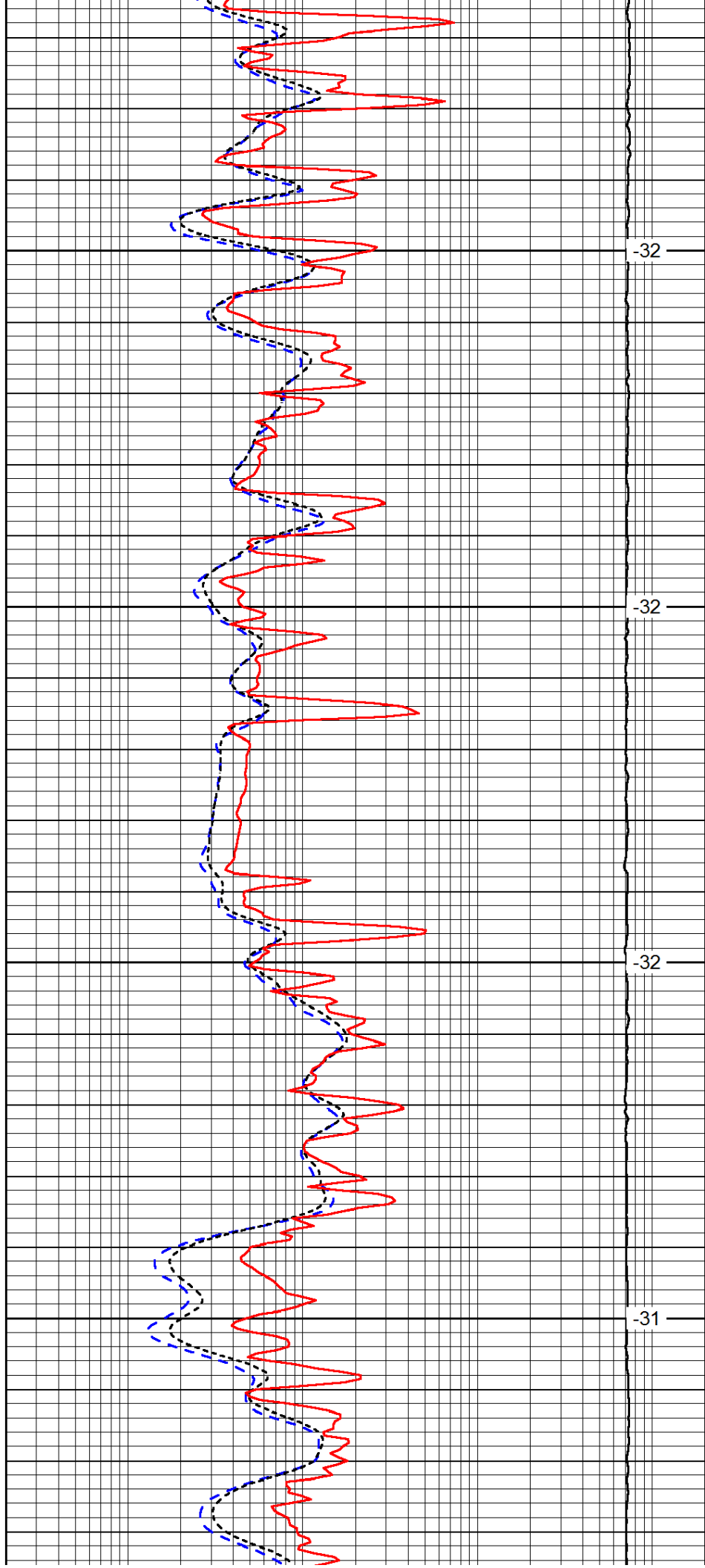


2850

2900

2950

3000

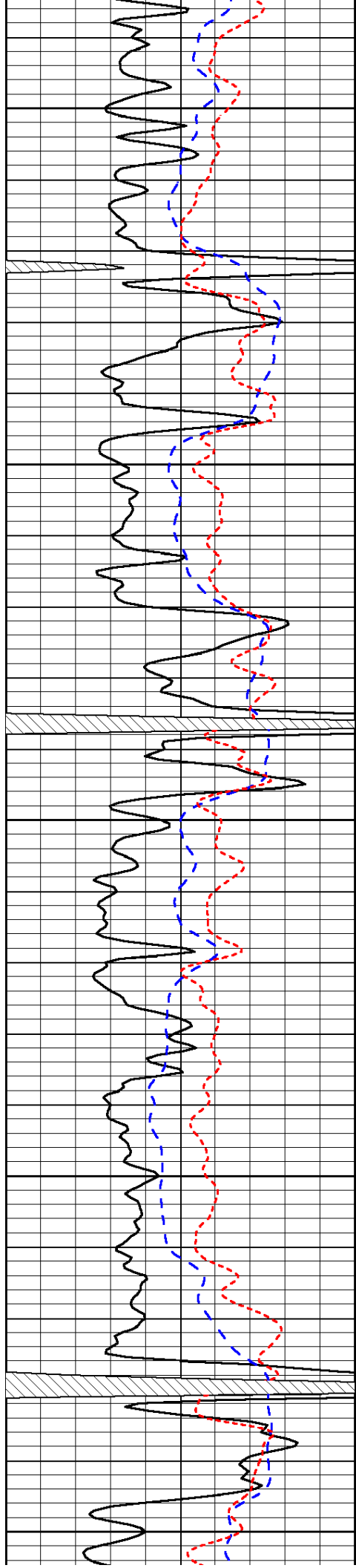


-32

-32

-32

-31



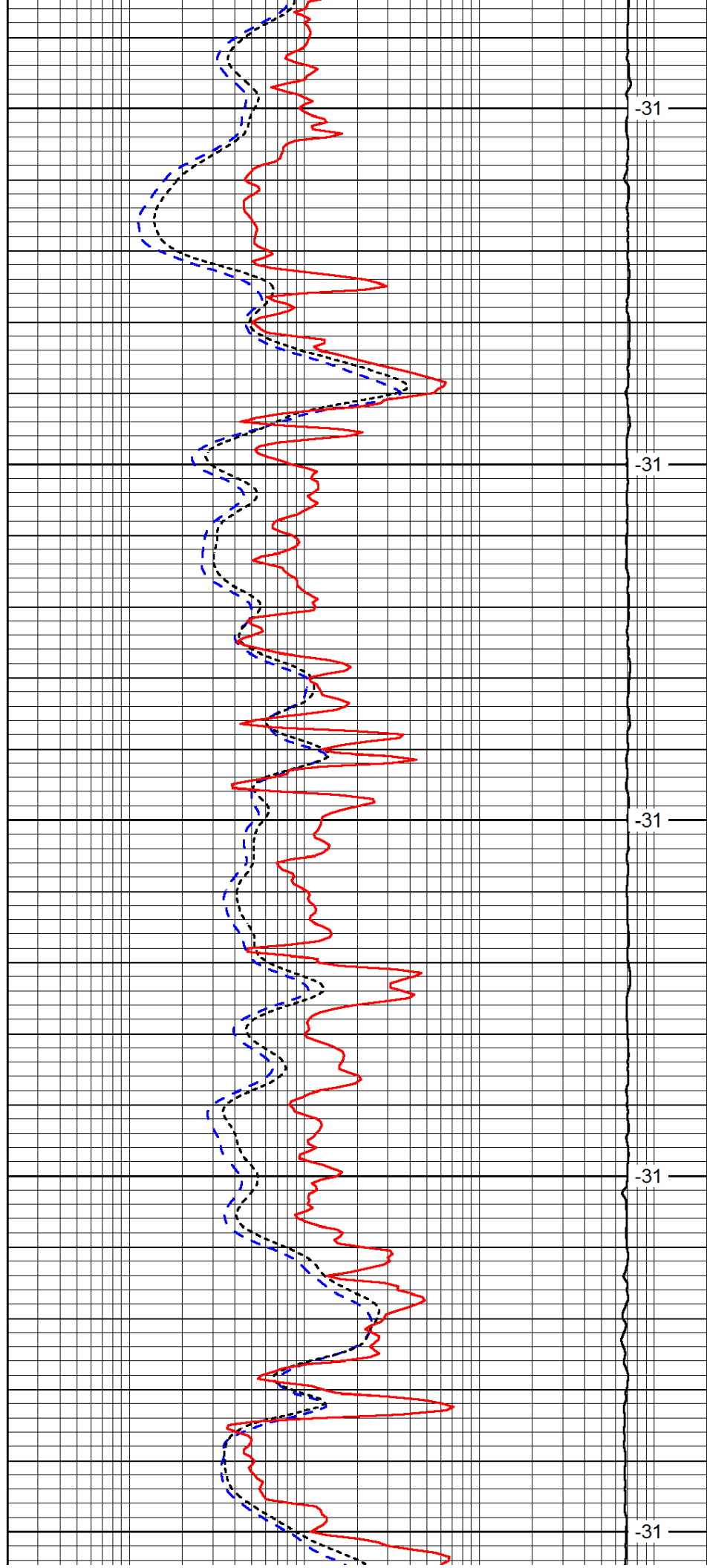
3050

3100

3150

3200

3250



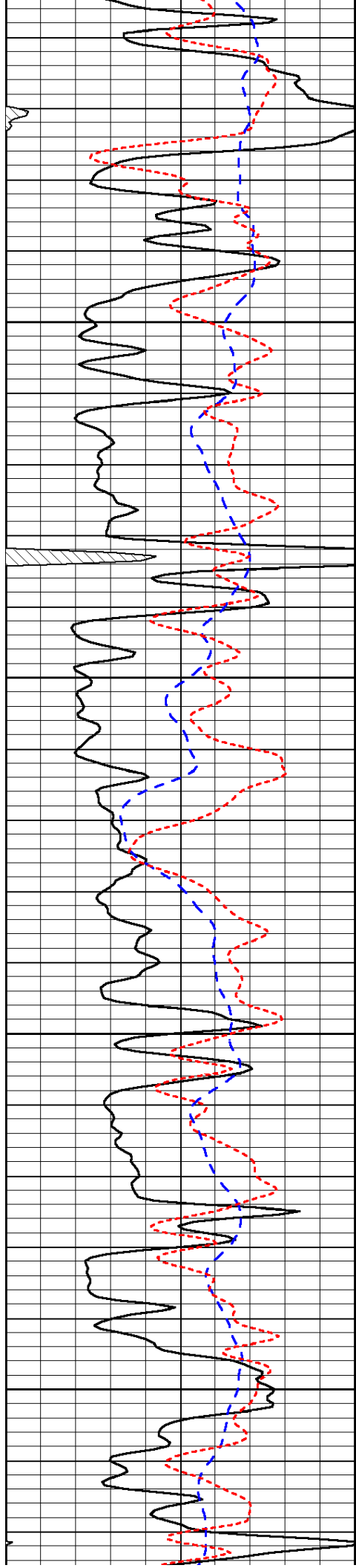
-31

-31

-31

-31

-31

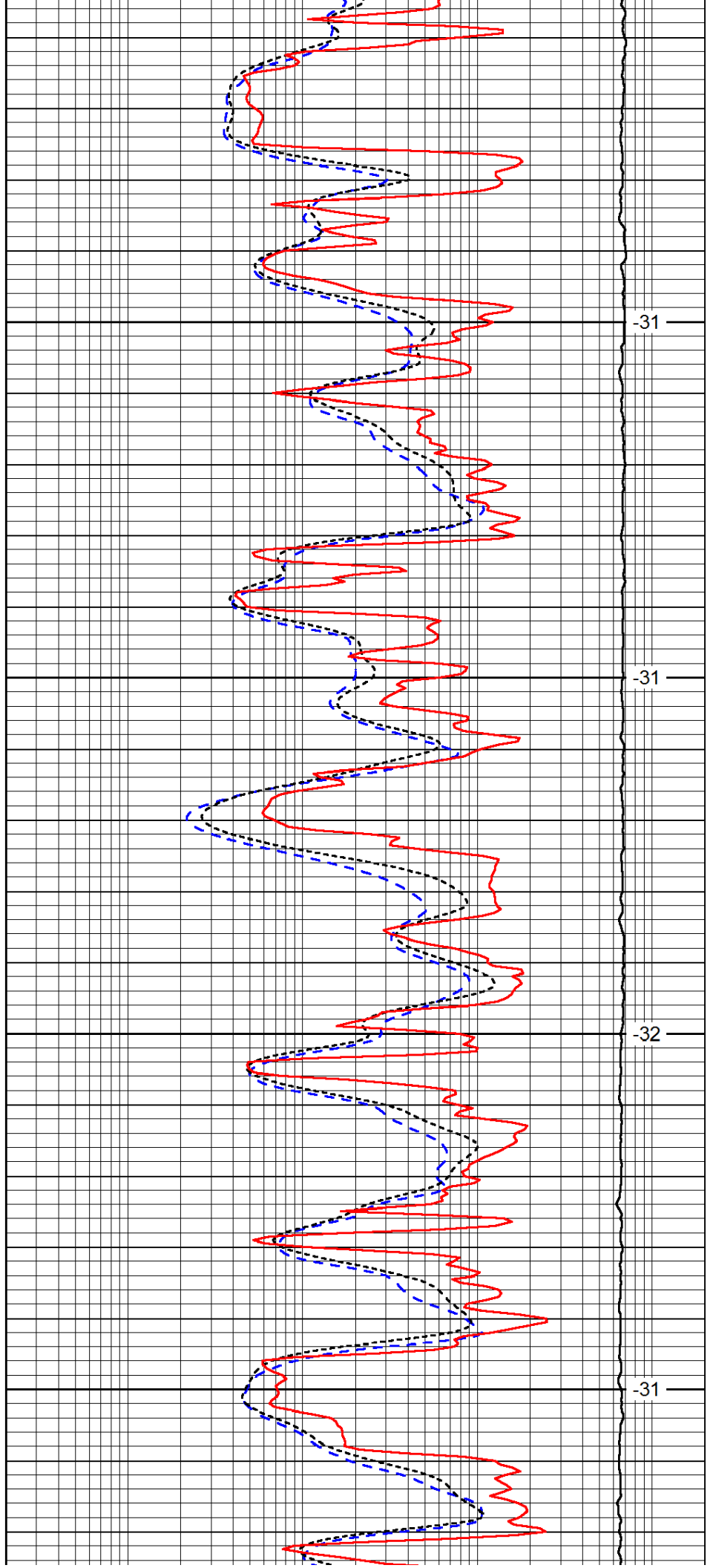


3300

3350

3400

3450

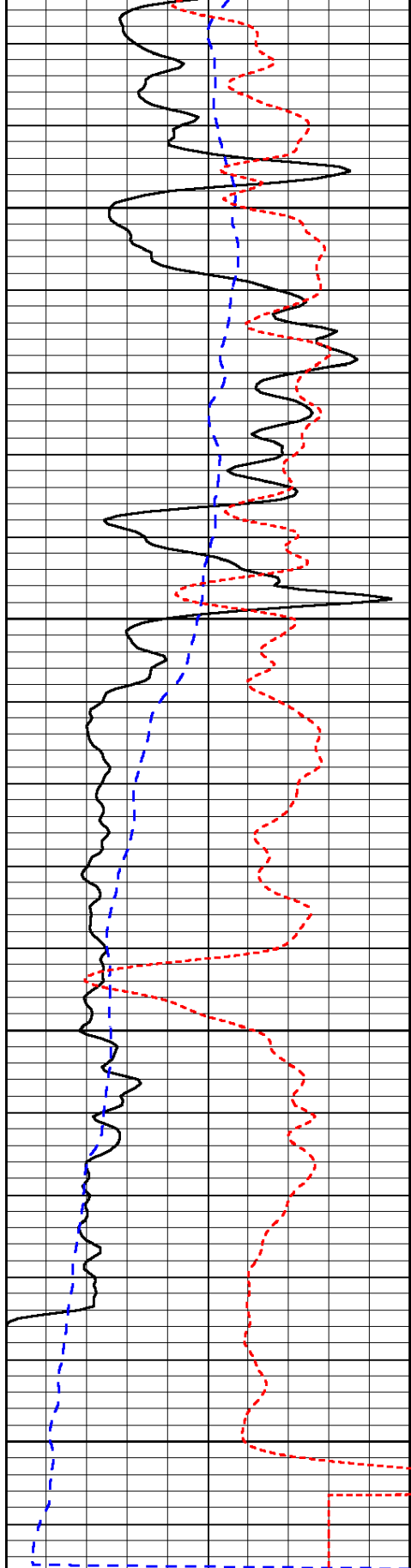


-31

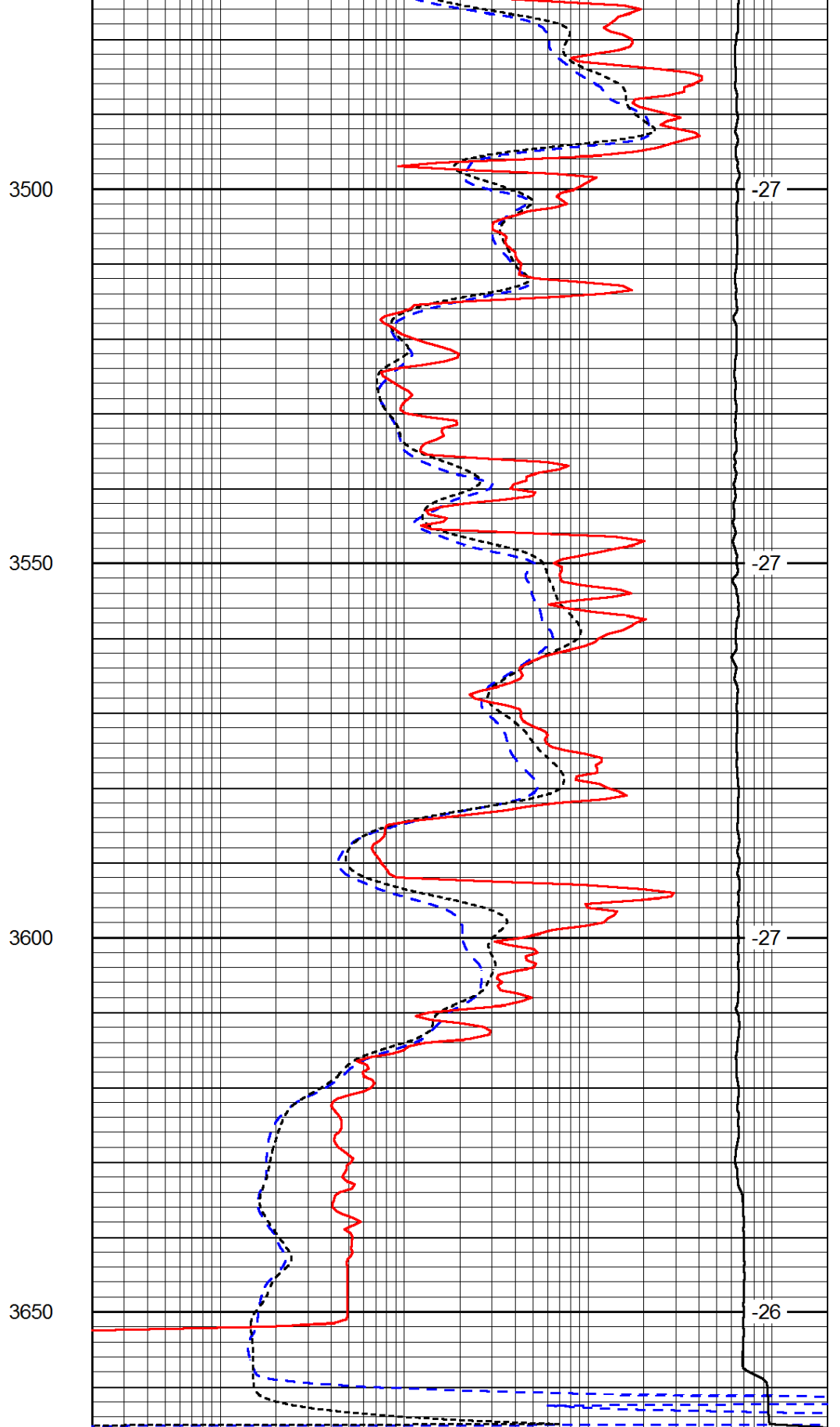
-31

-32

-31



0	Gamma Ray	150
-200	SP (mV)	0
-160	RxoRt	40



0.2	Deep Resistivity	2000
0.2	Medium Resistivity	2000
0.2	Shallow Resistivity	2000
15000	Line Tension	0

LSPD