



MIDWEST SURVEYS
 LOGGING - PERFORATING - CONSULTING SERVICES
 P.O. Box 66, Osawatomie, KS 66064
 913 / 755 - 2128

GAMMA RAY / NEUTRON / CCL

File No.

Company **ST Petroleum, Inc.**
 Well **Thomas "B" No. - 4**

Field **Longnecker Southeast**
 County **Johnson** State **Kansas**

Location **4830' FSL & 1951' FEL**
SW-NE-NW/NE

Sec. **31** Twp. **14S** Rge. **22E**
 Permian Basin GL Elevation **1051'**
 Log Measured From GL
 Drilling Measured From GL

Date **10-14-2013**
 Run Number **One**
 Depth Driller **980.0**
 Depth Logger **935.5**
 Bottom Logged Interval **934.5**
 Top Log Interval **200.0**
 Fluid Level **Full**

Type Fluid **Water**
 Density / Viscosity **NA**
 Salinity - PPM Cl **NA**
 Max Recorded Temp **NA**
 Estimated Cement Top **0.0**

Equipment No. **102** Location **Osawatomie**
 Recorded By **Gary Winkisch**
 Witnessed By **Rick Singteen**

BORE-HOLE RECORD
 RUN No. **BIT FROM TO** SIZE **WGT. FROM TO**
 One **9.875" 0.0 22.4** **7.00" 0.0 22.4**
 Two **5.625" 22.4 980.0** **2.875" 6.5# 0.0**
 Baffle **Set At** **935.50**

CASING RECORD
 TO **TO**
22.4
943.50
935.50

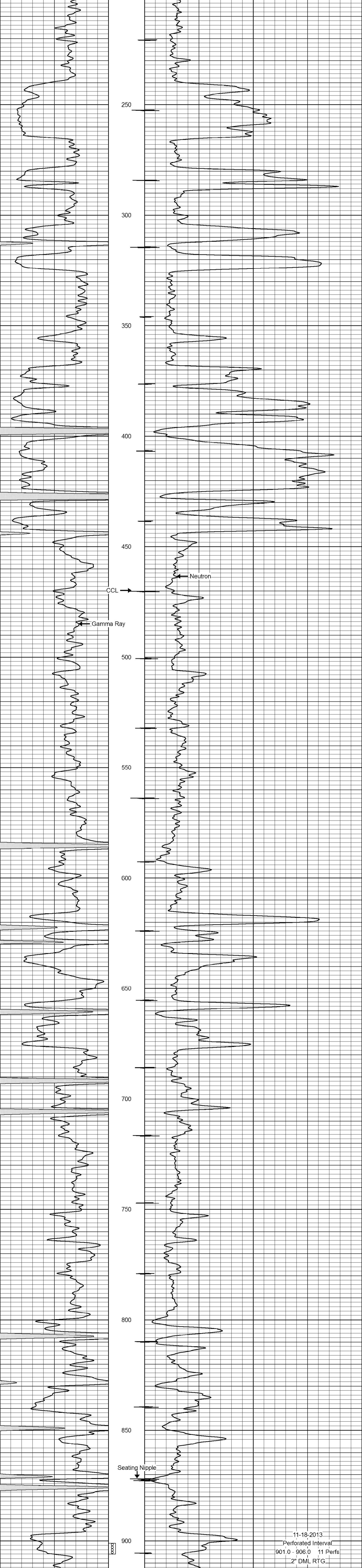
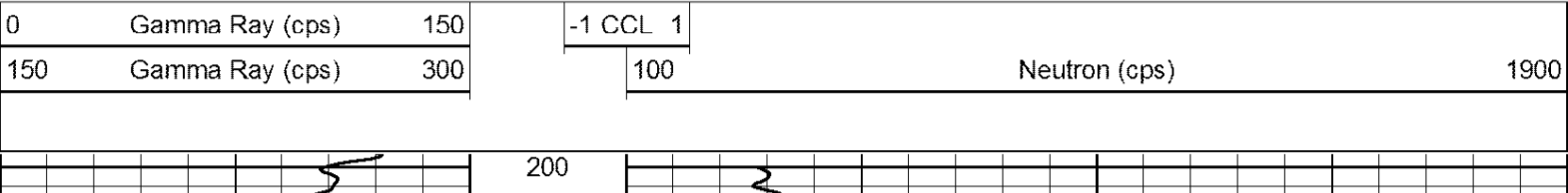
<<< Fold Here >>>

All interpretations are opinions based on inferences from electrical or other measurements and we cannot and do not guarantee the accuracy or correctness of any interpretation, and we shall not, except in the case of gross or willful negligence on our part, be liable or responsible for any loss, costs, damages, or expenses incurred or sustained by anyone resulting from any interpretation made by any of our officers, agents or employees. These interpretations are also subject to our general terms and conditions set out in our current Price Schedule.

Comments

Drilling Contractor :
 Town Oilfield Services, Inc.

Database File: thomas4b.db
 Dataset Pathname: pass1
 PresentationFormat: gr-n-ccl
 Dataset Creation: Mon Oct 14 13:19:09 2013 by Log SCH 111116
 Charted by: Depth in Feet scaled 1:240



11-18-2013
 Perforated Interval
 901.0 - 906.0 11 Perfs
 2" DML RTG

