



Pioneer Energy Services

Dual Induction Log

15-051-26,487-00-00

API No.	Company	TDI, Inc.
	Well	Lilly No. 1
	Field	Unnamed
	County	Elilis
	State	Kansas
Location	NW SE SE NE 2270' FNL & 490' FEL	
Sec: 1	Twp: 15 S	Rge: 20 W
Permanent Datum	Ground Level	Elevation 2045
Log Measured From	Kelly Bushing	10 Ft. Above Perm. Datum
Drilling Measured From	Kelly Bushing	
		Other Services CNL/CDL MEL
		Elevation K.B. 2055 D.F. 2045 G.L. 2045

Date	4/11/2013
Run Number	One
Depth Driller	3749
Depth Logger	3747
Bottom Logged Interval	3746
Top Log Interval	200
Casing Driller	8.625 @ 213
Casing Logger	211
Bit Size	7.875
Type Fluid in Hole	Chemical
Salinity, ppm CL	5500
Density / Viscosity	9.3 50
pH / Fluid Loss	10.5 7.6
Source of Sample	Flowline
Rm @ Meas. Temp	.36 @ 58
Rmf @ Meas. Temp	.27 @ 58
Rmc @ Meas. Temp	.49 @ 58
Source of Rmf / Rmc	Charts
Rm @ BHT	.18 @ 113
Operating Rig Time	4 Hours
Max Rec. Temp. F	113
Equipment Number	108
Location	Hays
Recorded By	D. Martin
Witnessed By	Tom Denning

<<< Fold Here >>>

All interpretations are opinions based on inferences from electrical or other measurements and we cannot and do not guarantee the accuracy or correctness of any interpretation, and we shall not, except in the case of gross or willful negligence on our part, be liable or responsible for any loss, costs, damages, or expenses incurred or sustained by anyone resulting from any interpretation made by any of our officers, agents or employees. These interpretations are also subject to our general terms and conditions set out in our current Price Schedule.

Comments

Thank you for using Log-Tech, Inc.
 (785) 625-3858

 Antonino, KS
 5 W, 1/2 S, W Into

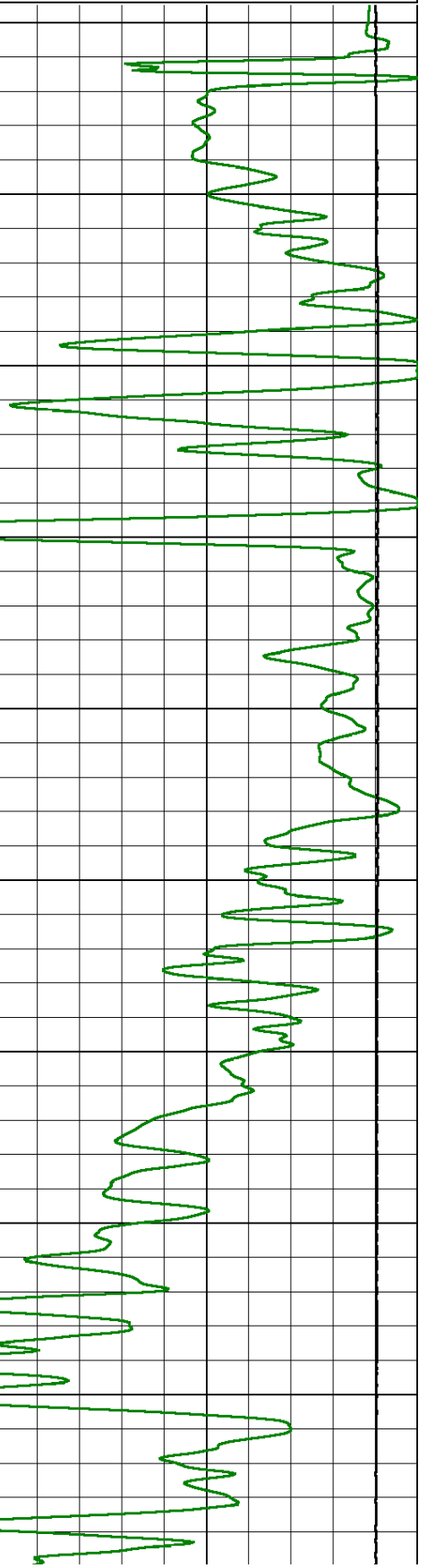
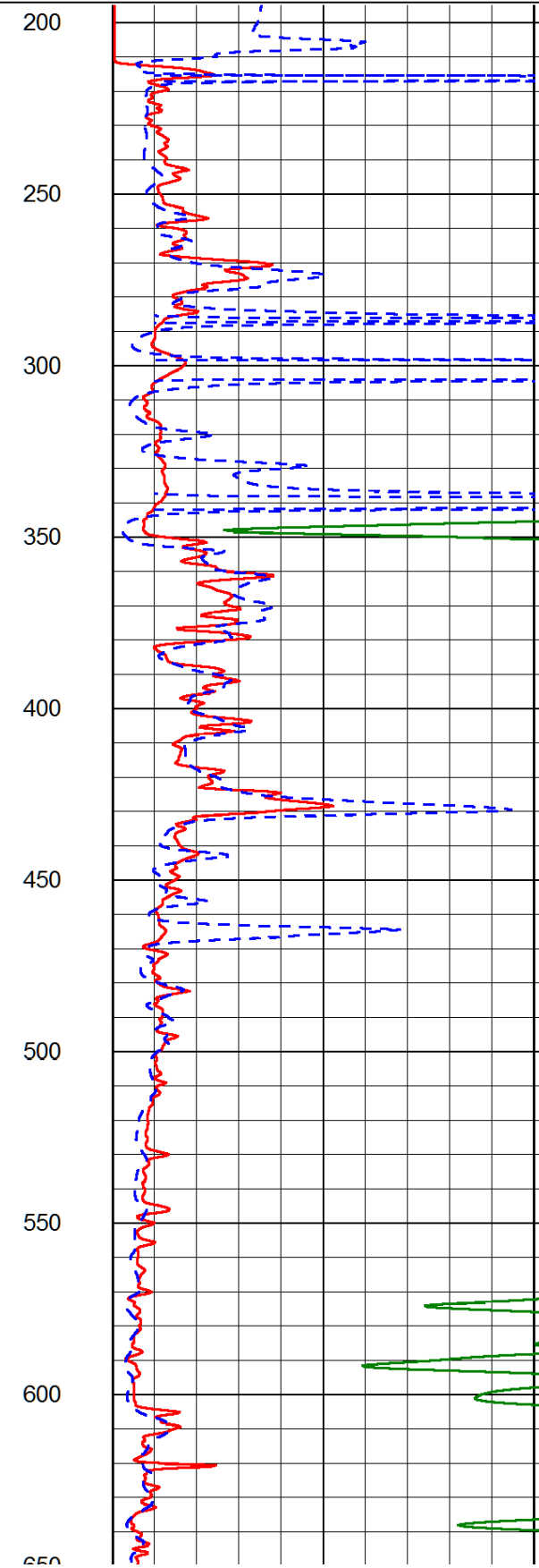
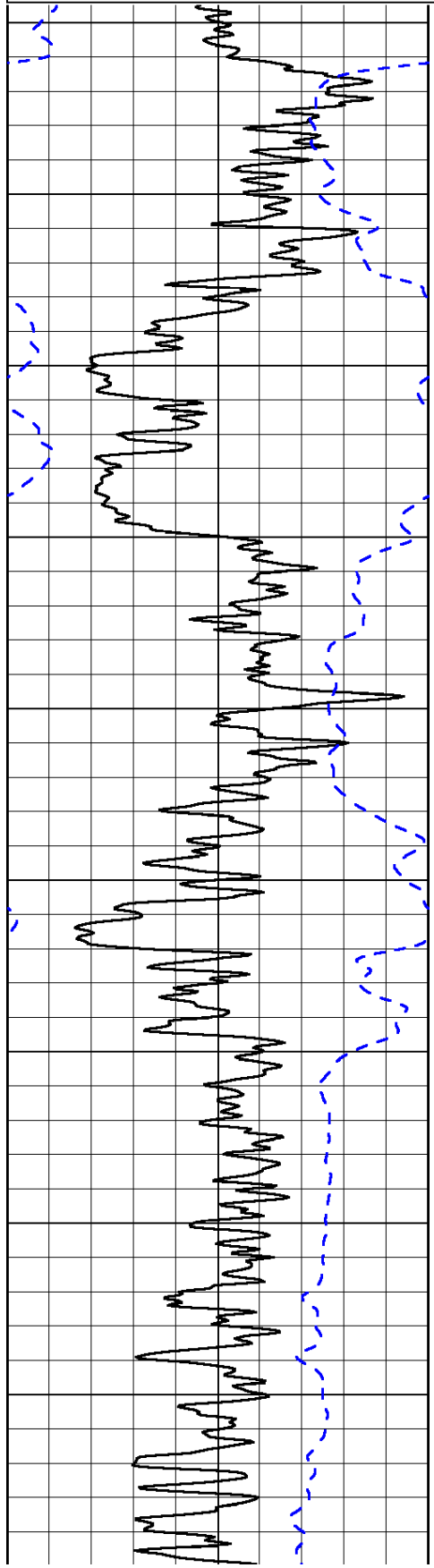
Database File: tdi_lilly_1hd.db
 Dataset Pathname: dil/tdistk
 Presentation Format: dil2in
 Dataset Creation: Thu Apr 11 18:03:22 2013
 Charted by: Depth in Feet scaled 1:600

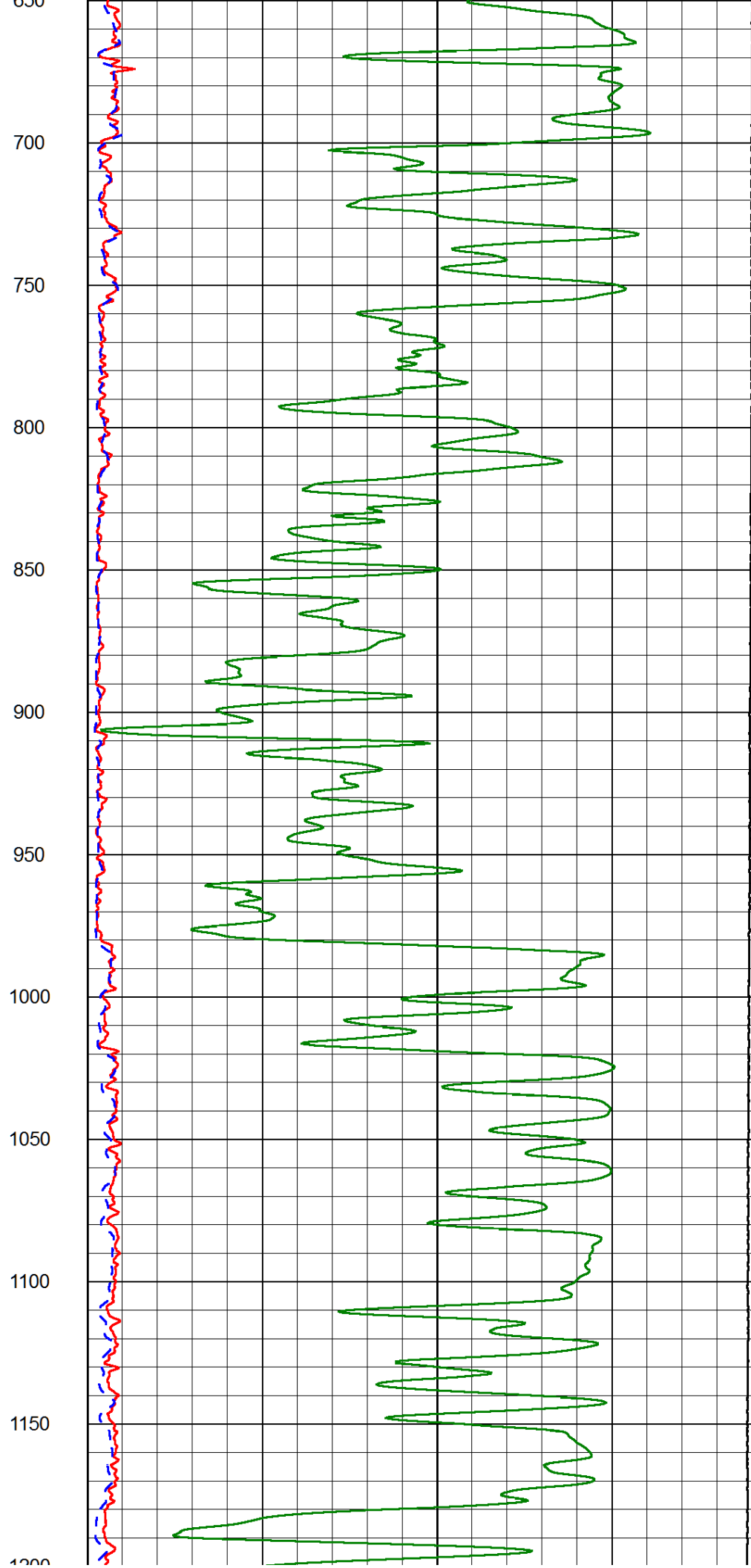
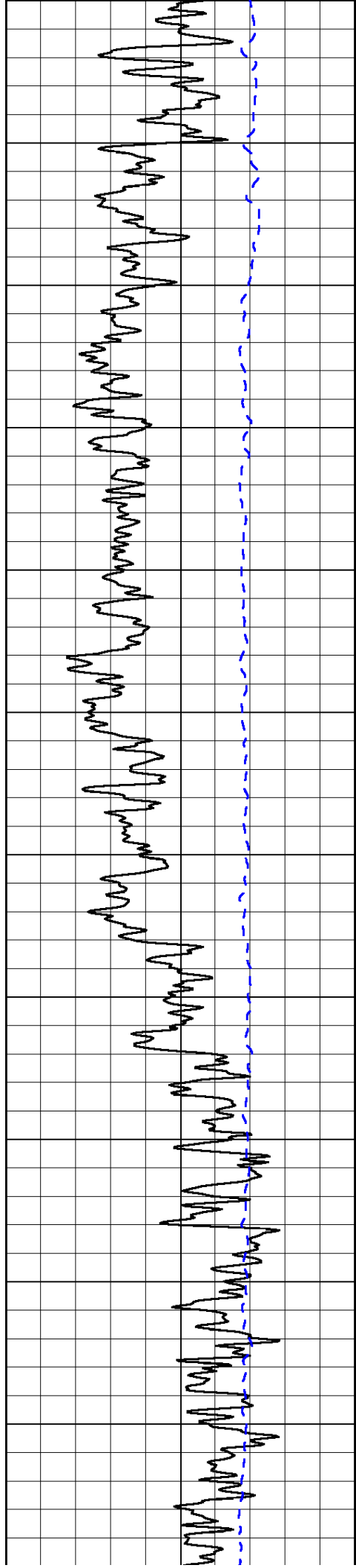
0	Gamma Ray (GAPI)	150
-200	SP (mV)	0

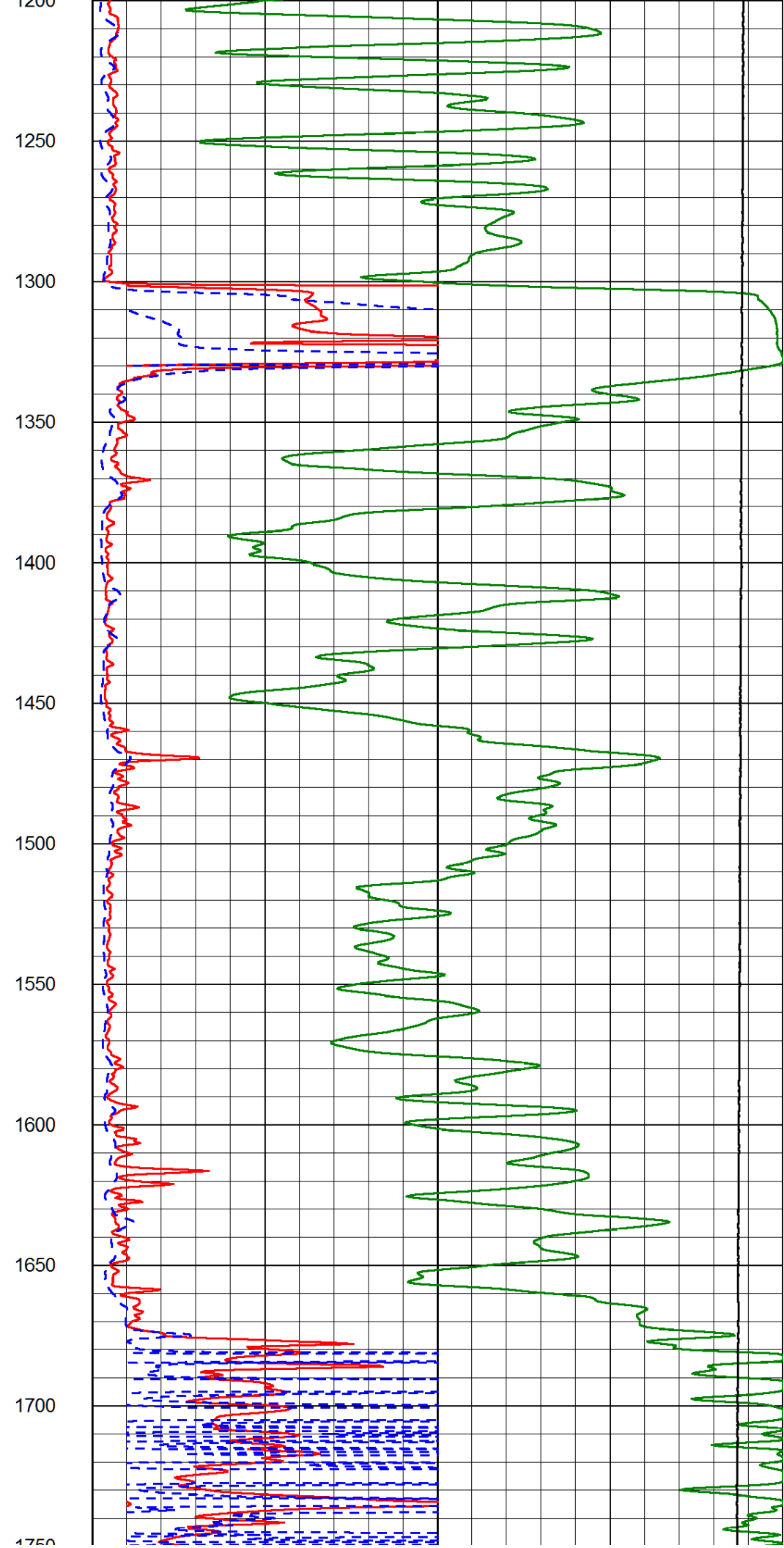
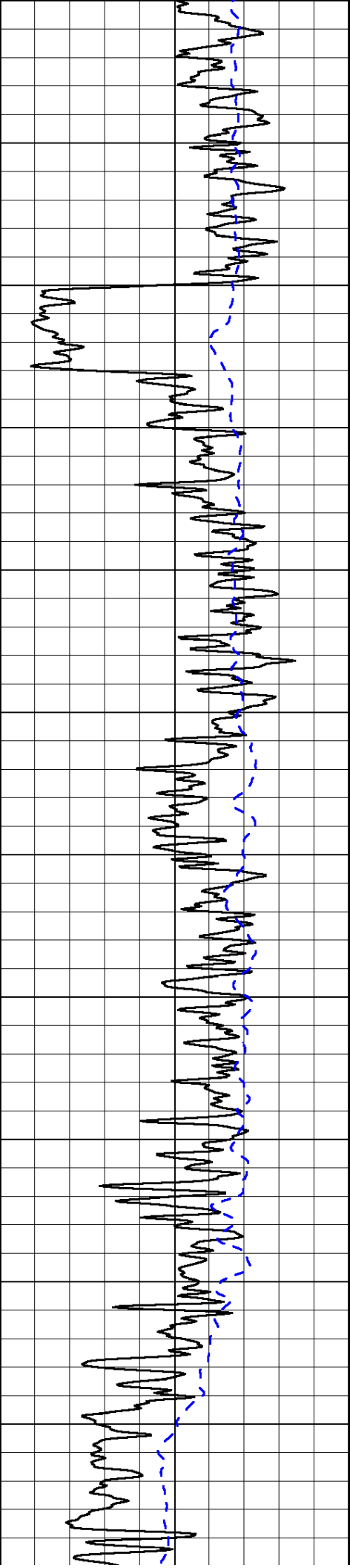
0	Shallow Resistivity (Ohm-m)	50
0	Deep Resistivity (Ohm-m)	50

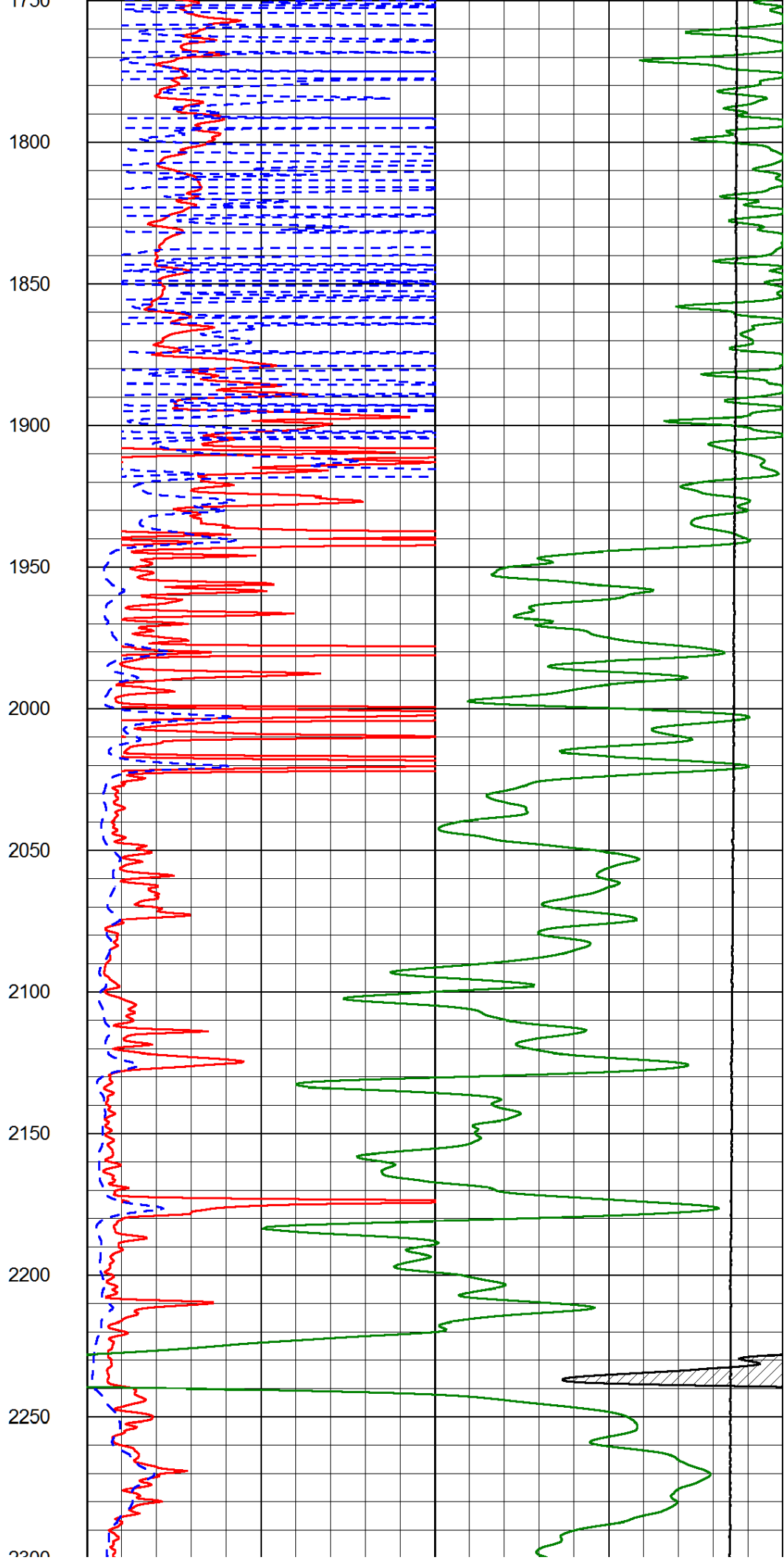
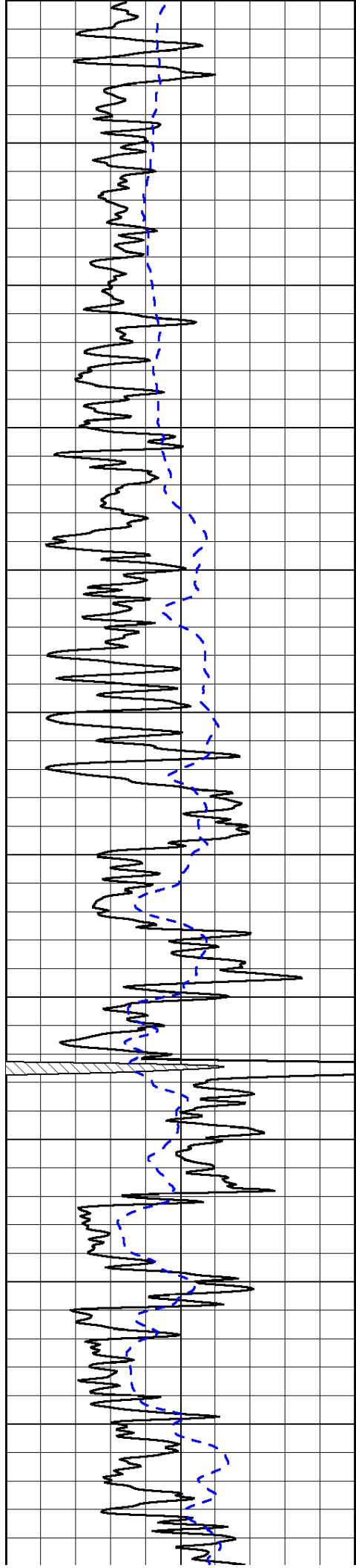
1000	Conductivity (Ohm-m)	0
15000	Line Tension (lb)	0

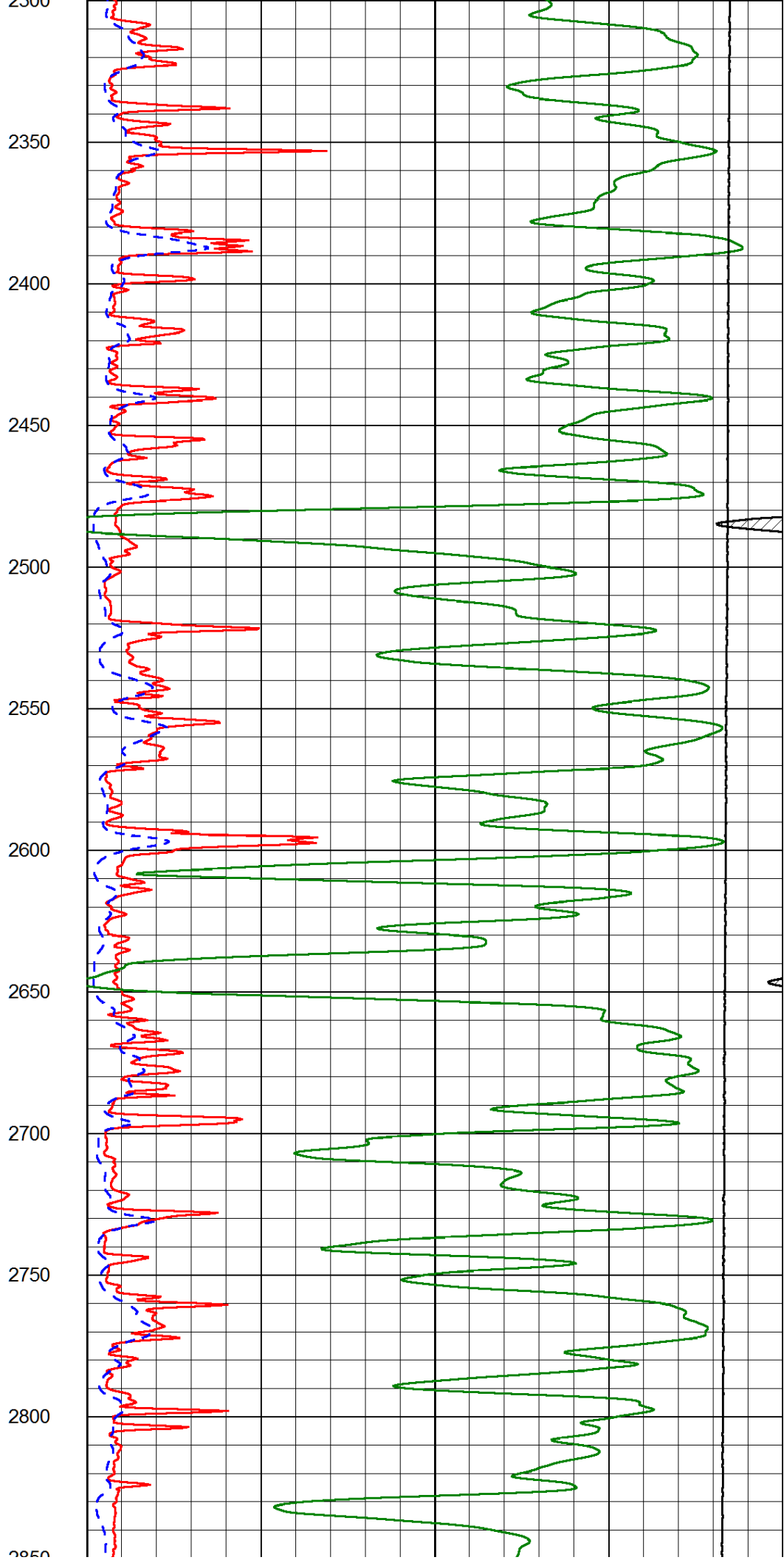
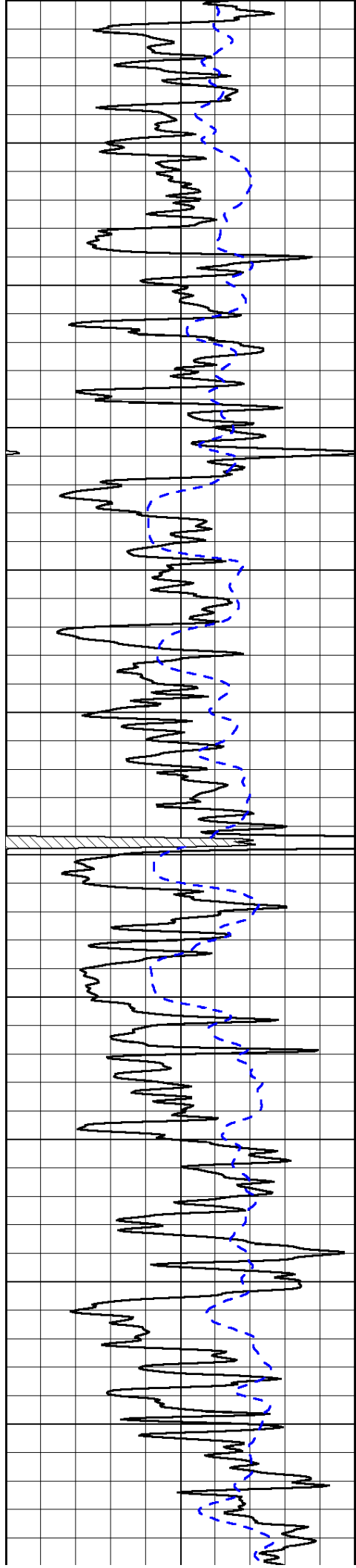
Shallow Resistivity		
50	(Ohm-m)	500
50	Deep Resistivity (Ohm-m)	500

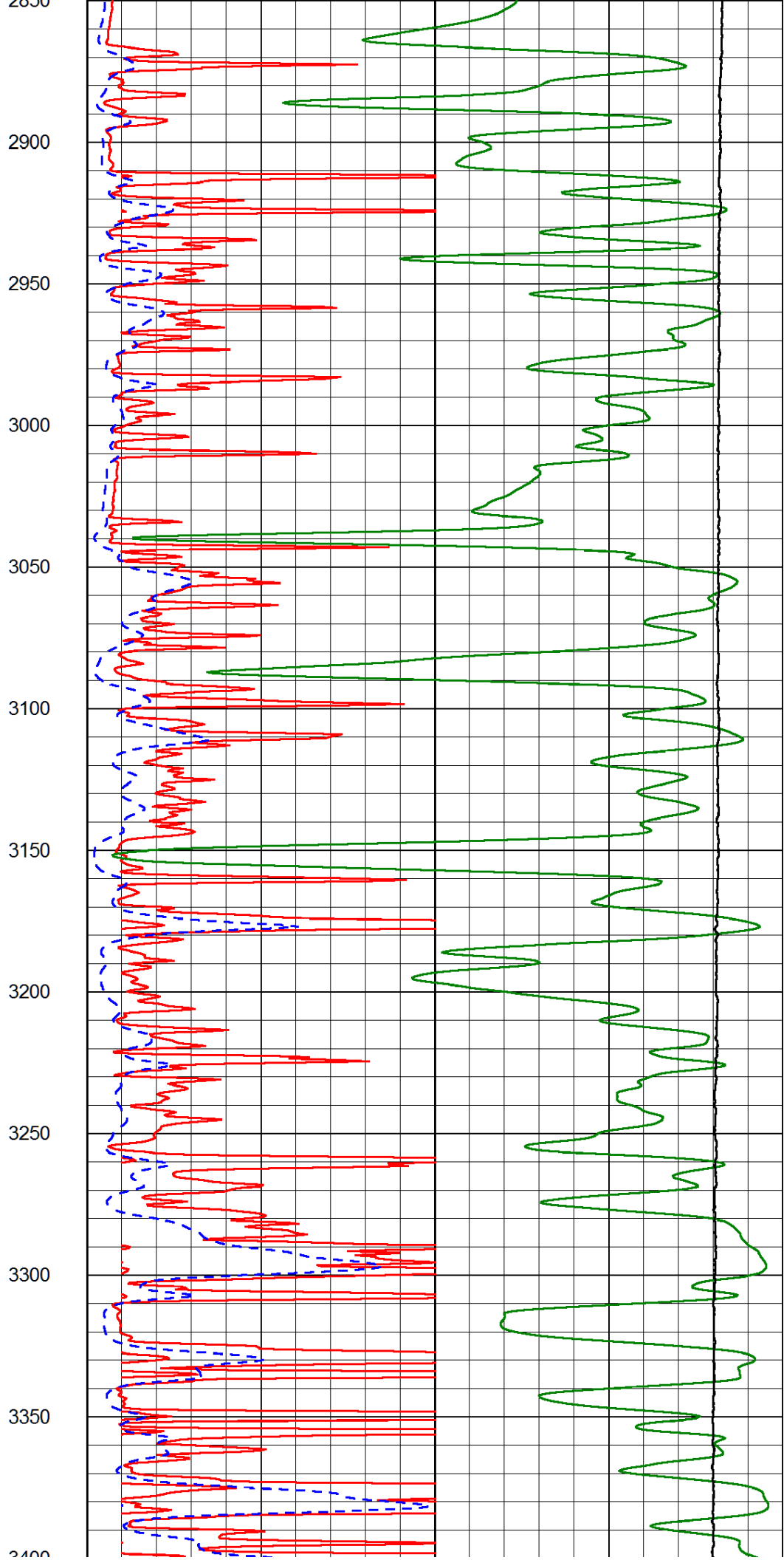
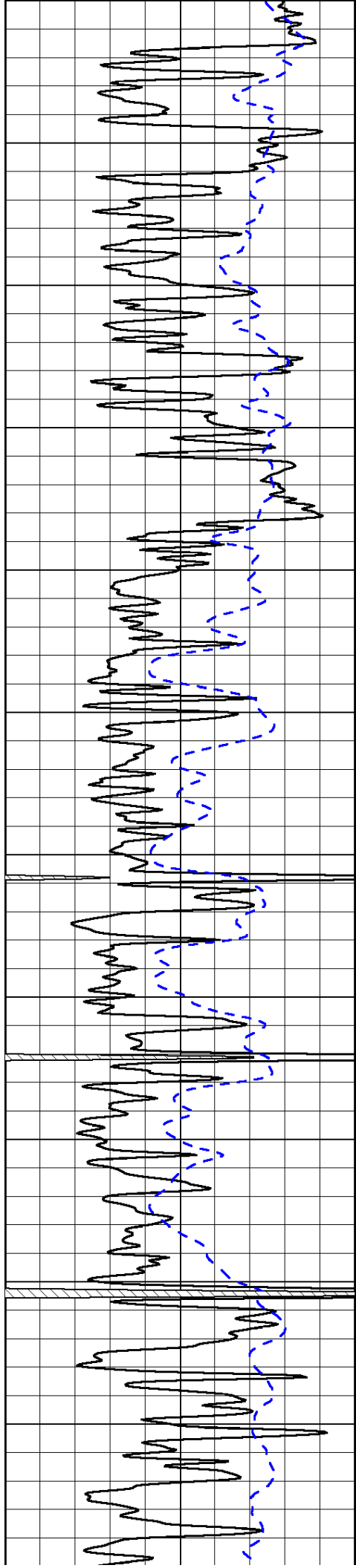


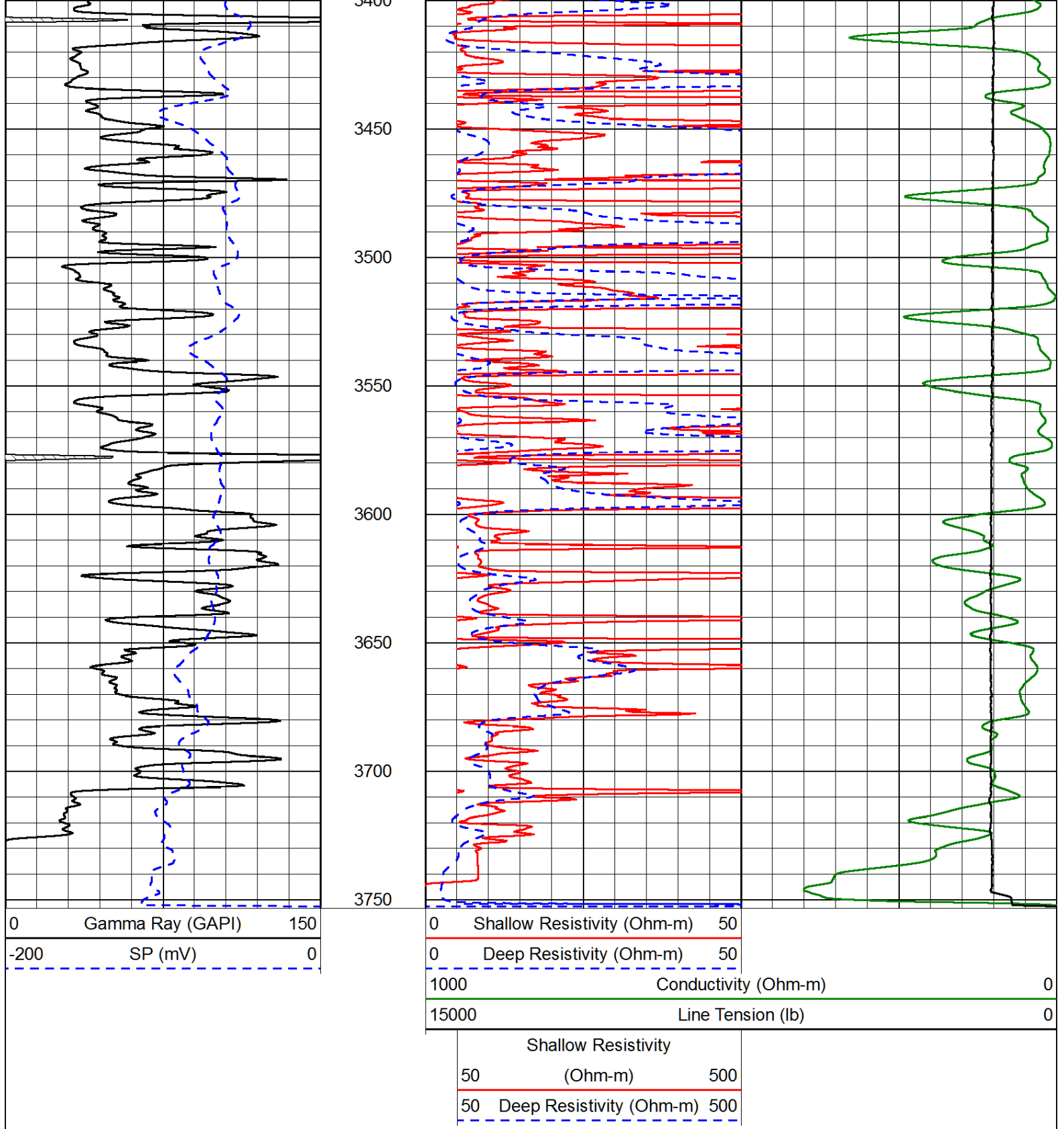




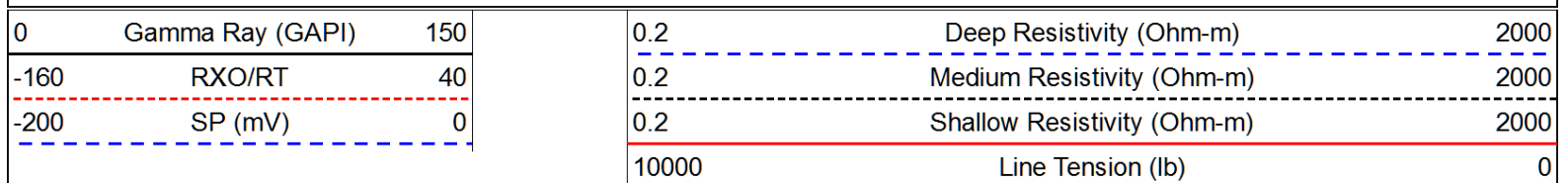




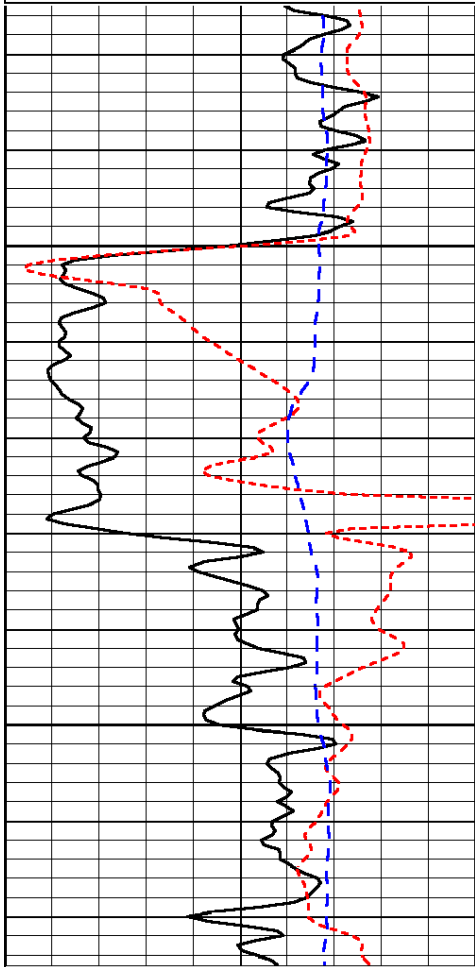




Database File: tdi_lilly_1hd.db
 Dataset Pathname: dil/tdstk
 Presentation Format: dil
 Dataset Creation: Thu Apr 11 18:03:22 2013
 Charted by: Depth in Feet scaled 1:240



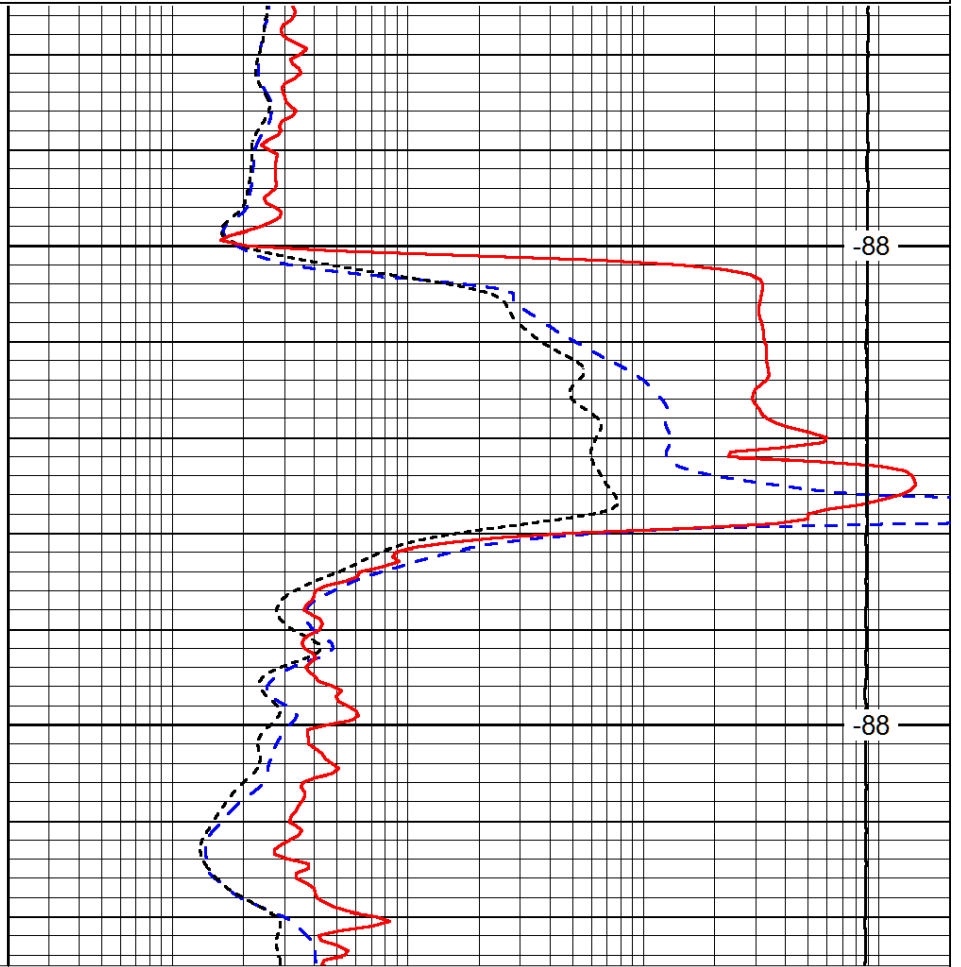
LSPD
(ft/min)



1300

1350

0	Gamma Ray (GAPI)	150
-160	RXO/RT	40
-200	SP (mV)	0



-88

-88

0.2	Deep Resistivity (Ohm-m)	2000
0.2	Medium Resistivity (Ohm-m)	2000
0.2	Shallow Resistivity (Ohm-m)	2000
10000	Line Tension (lb)	0

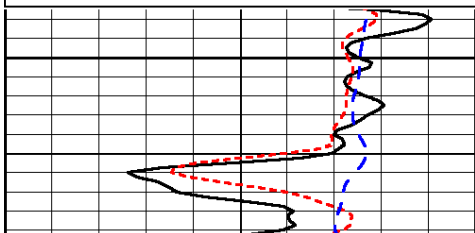
LSPD
(ft/min)

Database File: tdi_lilly_1hd.db
Dataset Pathname: dil/tdistk
Presentation Format: dil
Dataset Creation: Thu Apr 11 18:03:22 2013
Charted by: Depth in Feet scaled 1:240

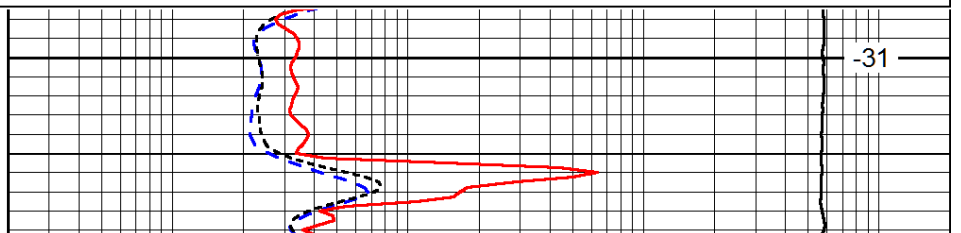
0	Gamma Ray (GAPI)	150
-160	RXO/RT	40
-200	SP (mV)	0

0.2	Deep Resistivity (Ohm-m)	2000
0.2	Medium Resistivity (Ohm-m)	2000
0.2	Shallow Resistivity (Ohm-m)	2000
10000	Line Tension (lb)	0

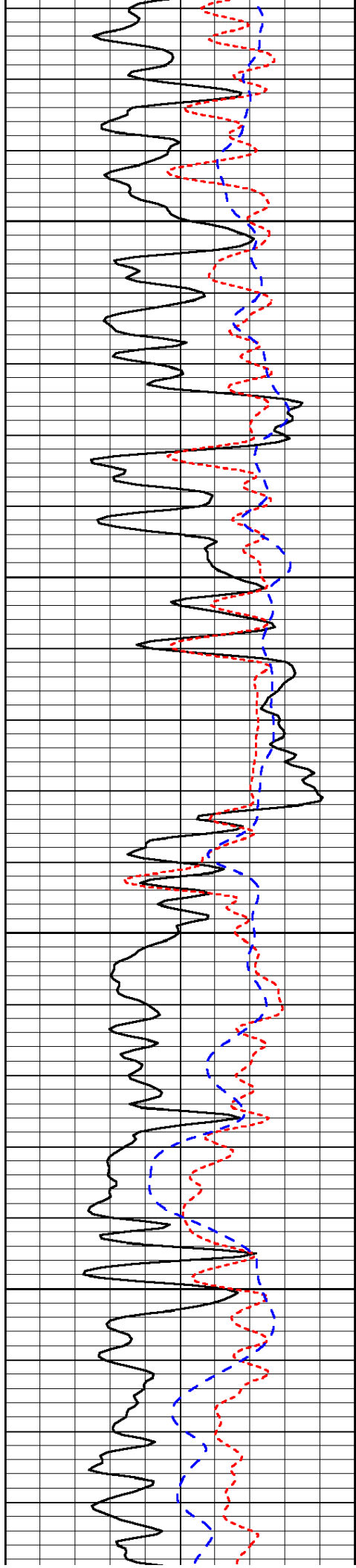
LSPD
(ft/min)



2900



-31

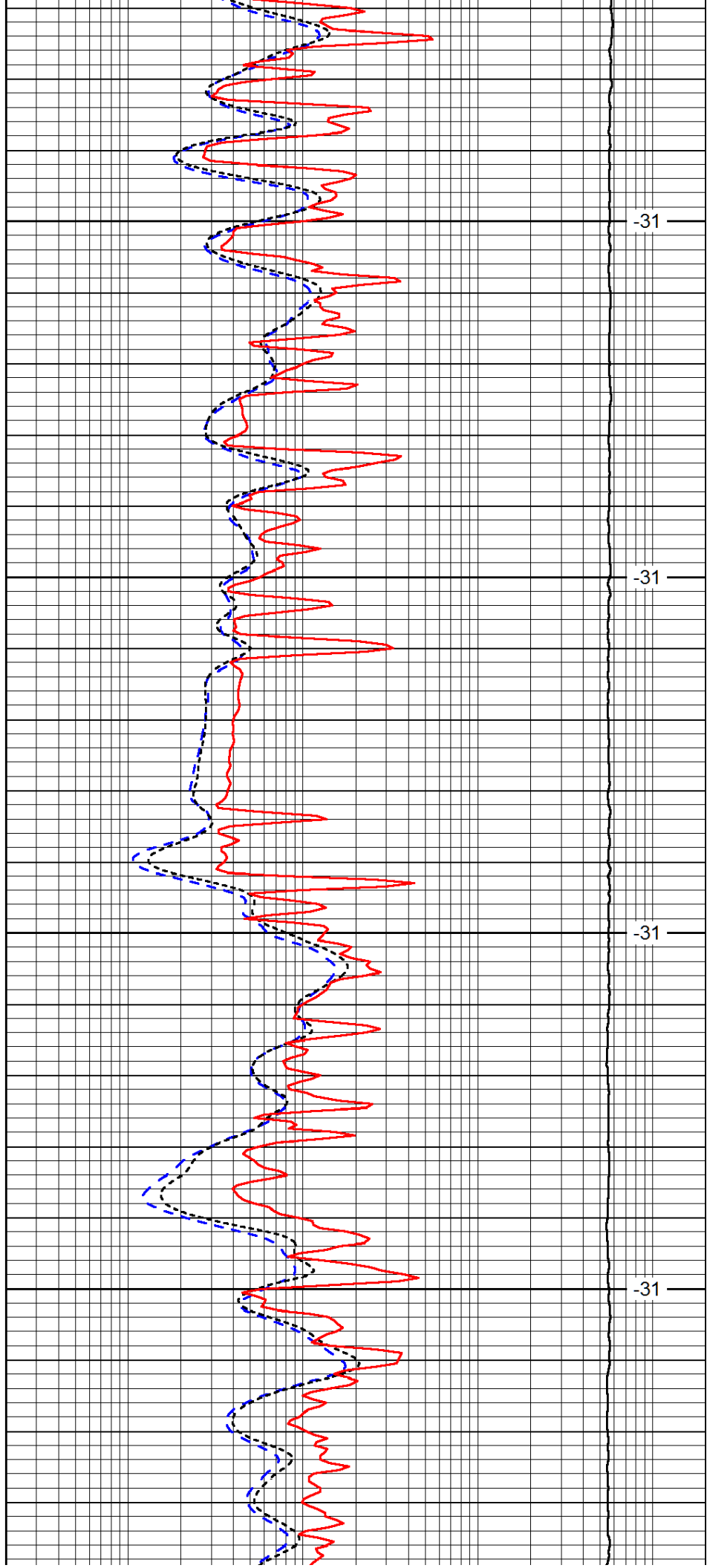


2950

3000

3050

3100

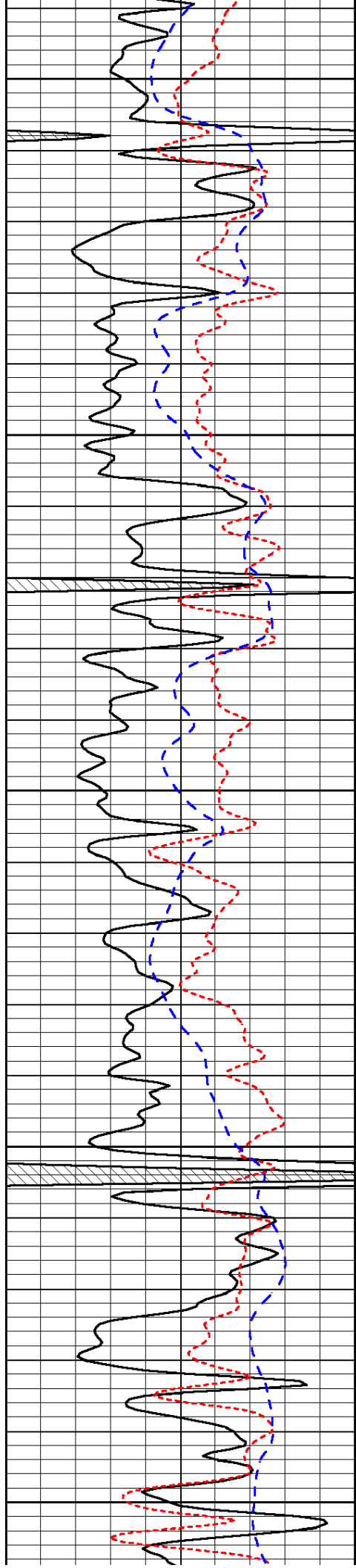


-31

-31

-31

-31



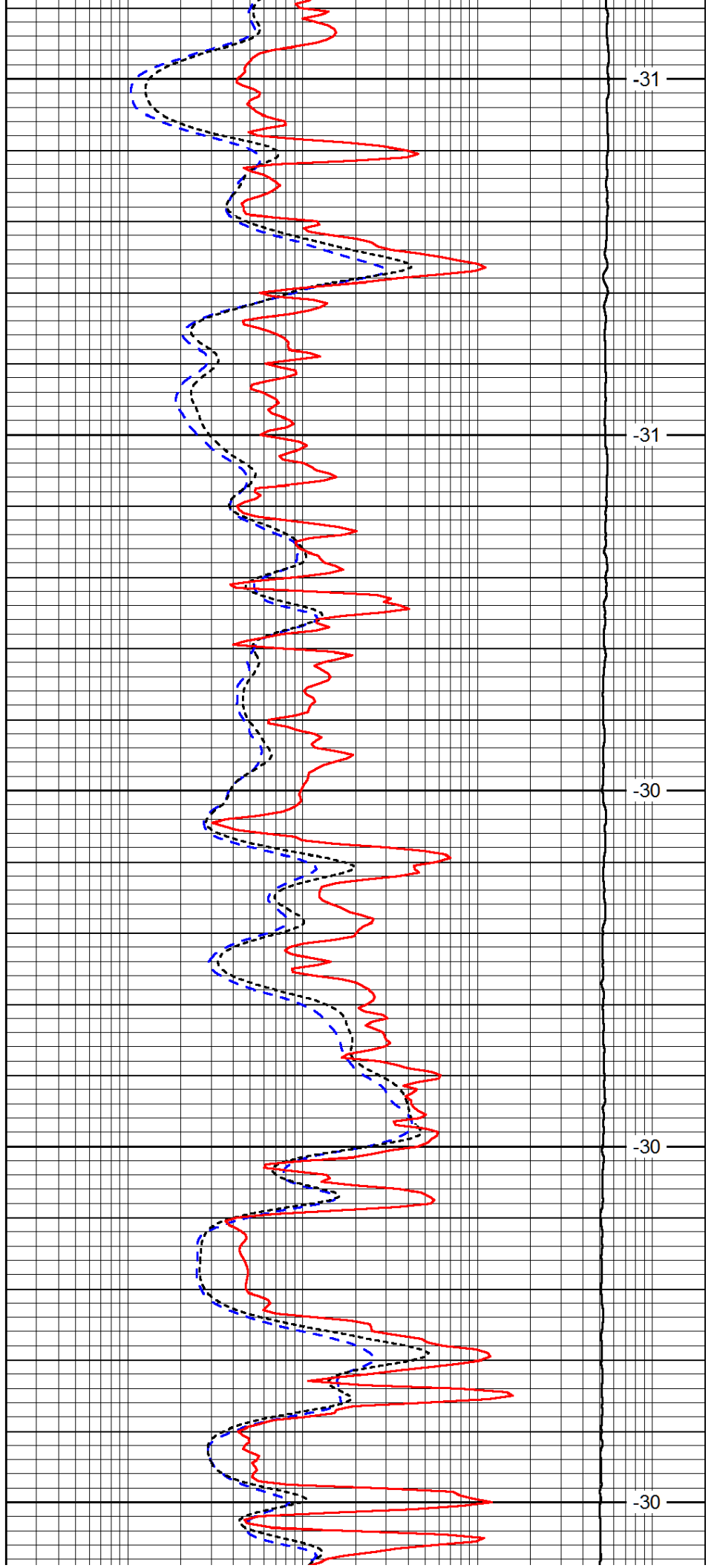
3150

3200

3250

3300

3350



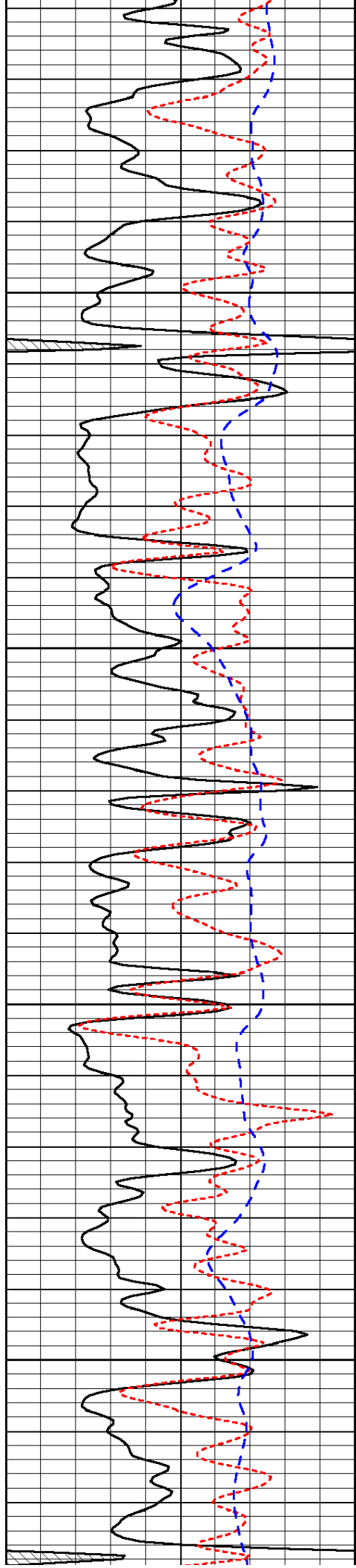
-31

-31

-30

-30

-30

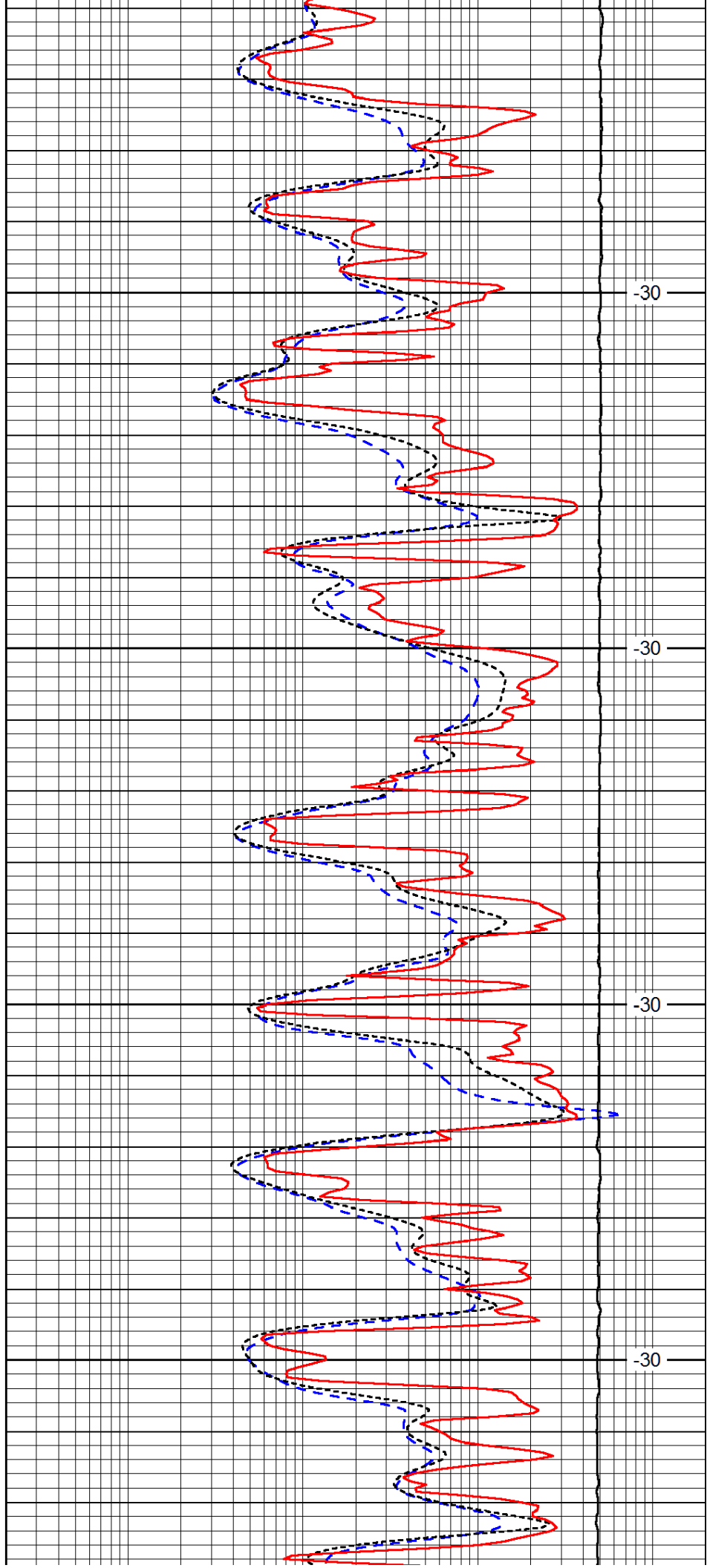


3400

3450

3500

3550

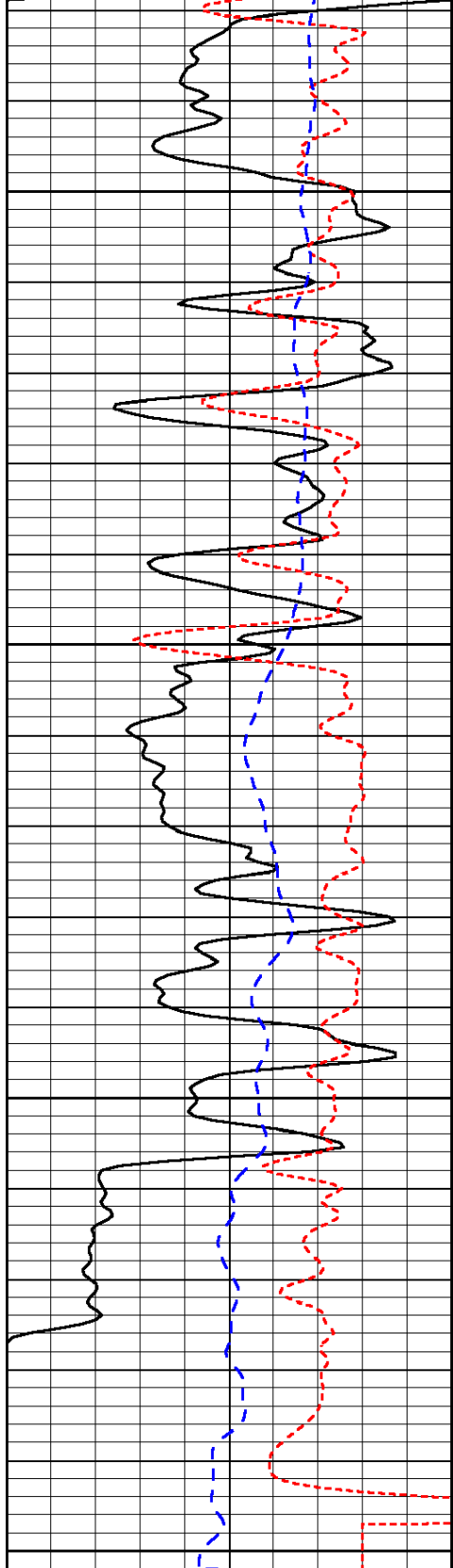


-30

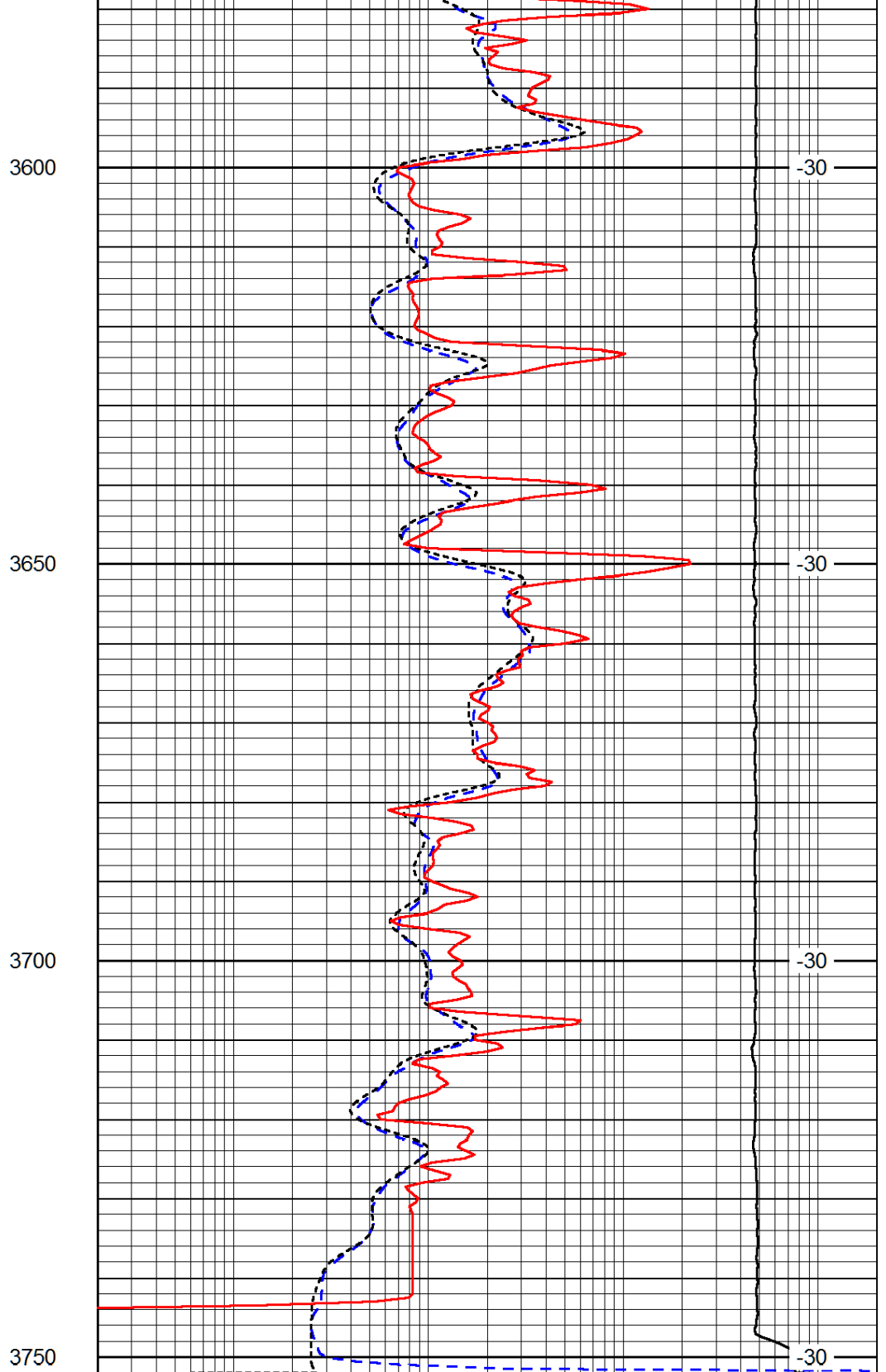
-30

-30

-30



0	Gamma Ray (GAPI)	150
-160	RXO/RT	40
-200	SP (mV)	0



0.2	Deep Resistivity (Ohm-m)	2000
0.2	Medium Resistivity (Ohm-m)	2000
0.2	Shallow Resistivity (Ohm-m)	2000
10000	Line Tension (lb)	0

LSPD
(ft/min)