



Pioneer Energy Services

Microresistivity Log

API No.	15-051-26,487-00-00		
Company	TDL, Inc.		
Well	Lilly No. 1		
Field	Unnamed		
County	Elilis	State	Kansas
Location	NW SE SE NE 2270' FNL & 490' FEL		
Sec: 1	Twp: 15 S	Rge: 20 W	Other Services CNL/CDL DIL

Permanent Datum	Ground Level	Elevation 2045	K.B. 2055 D.F. G.L. 2045
Log Measured From	Kelly Bushing	10 Ft. Above Perm. Datum	
Drilling Measured From	Kelly Bushing		
Date	4/11/2013		
Run Number	Two		
Depth Driller	3749		
Depth Logger	3747		
Bottom Logged Interval	3746		
Top Log Interval	2900		
Casing Driller	8.625 @ 213		
Casing Logger	211		
Bit Size	7.875		
Type Fluid in Hole	Chemical		
Salinity, ppm CL	5500		
Density / Viscosity	9.3	50	
pH / Fluid Loss	10.5	7.6	
Source of Sample	Flowline		
Rm @ Meas. Temp	.36	@ 58	
Rmf @ Meas. Temp	.27	@ 58	
Rmc @ Meas. Temp	.49	@ 58	
Source of Rmf / Rmc	Charts		
Rm @ BHT	.18	@ 113	
Operating Rig Time	4 Hours		
Max Rec. Temp. F	113		
Equipment Number	108		
Location	Hays		
Recorded By	D. Martin		
Witnessed By	Tom Denning		

<<< Fold Here >>>

All interpretations are opinions based on inferences from electrical or other measurements and we cannot and do not guarantee the accuracy or correctness of any interpretation, and we shall not, except in the case of gross or willful negligence on our part, be liable or responsible for any loss, costs, damages, or expenses incurred or sustained by anyone resulting from any interpretation made by any of our officers, agents or employees. These interpretations are also subject to our general terms and conditions set out in our current Price Schedule.

Comments

Thank you for using Log-Tech, Inc.
(785) 625-3858

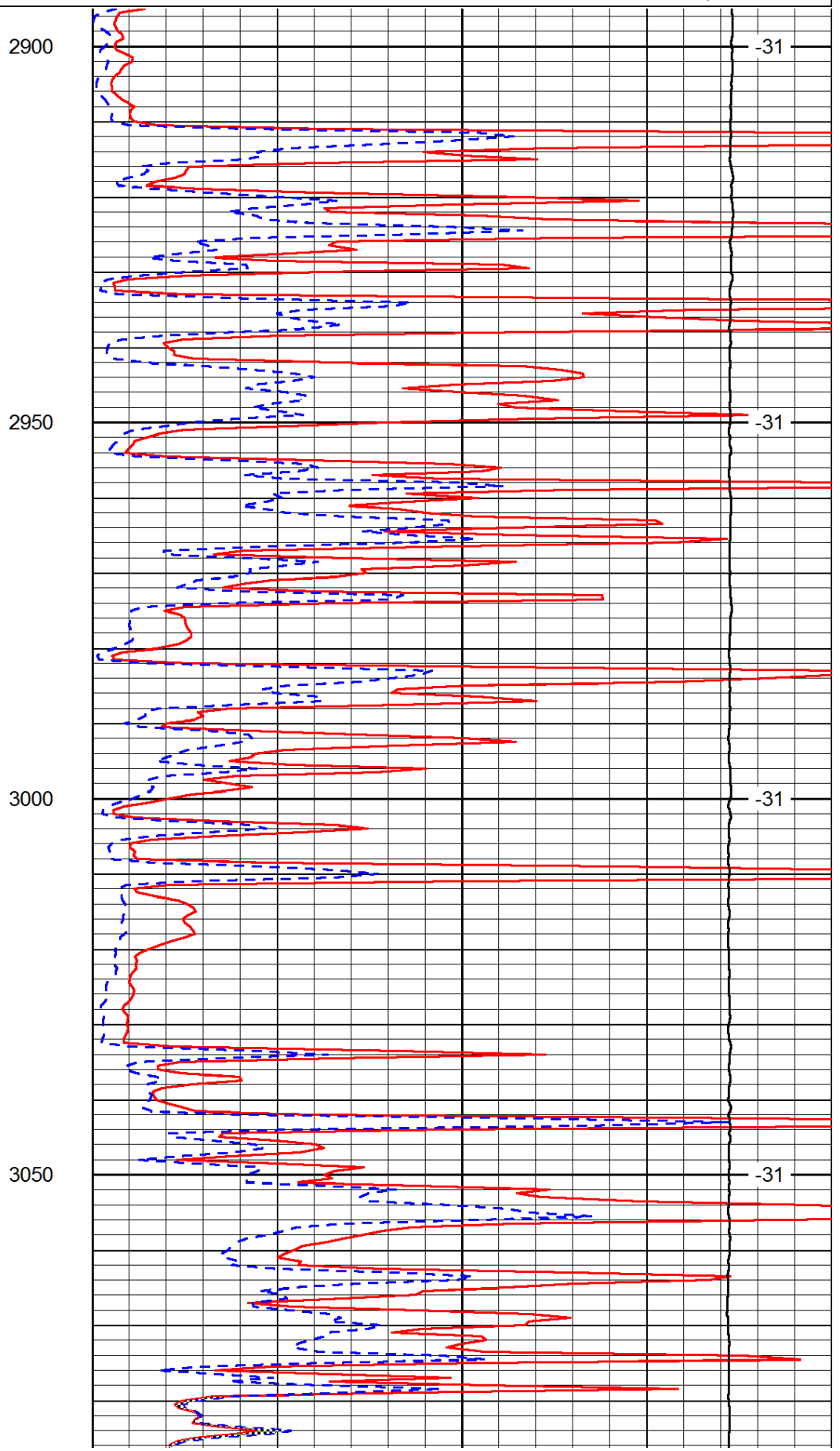
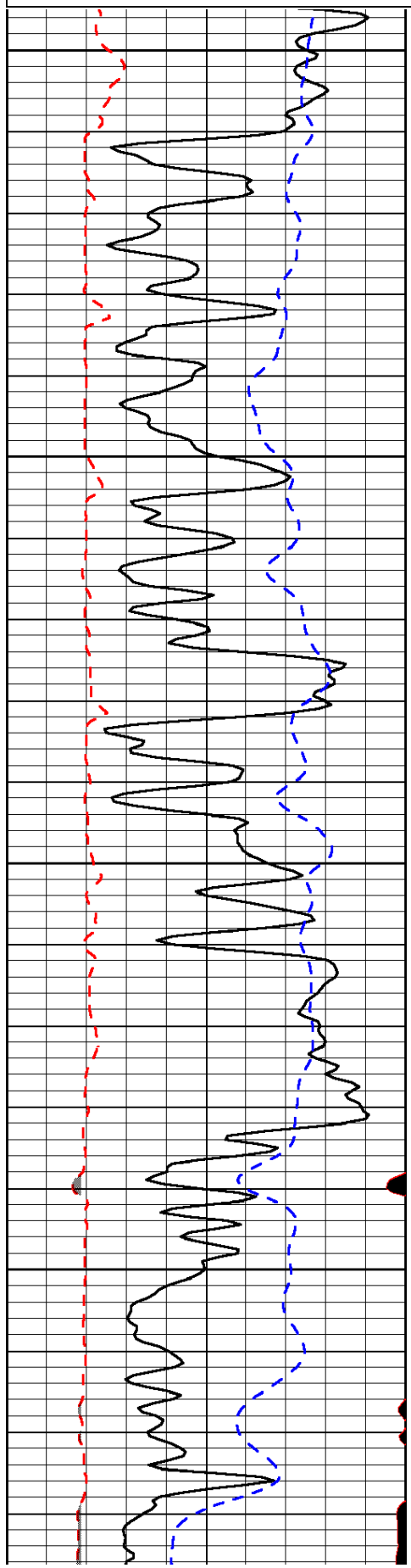
Antonino, KS
5 W, 1/2 S, W Into

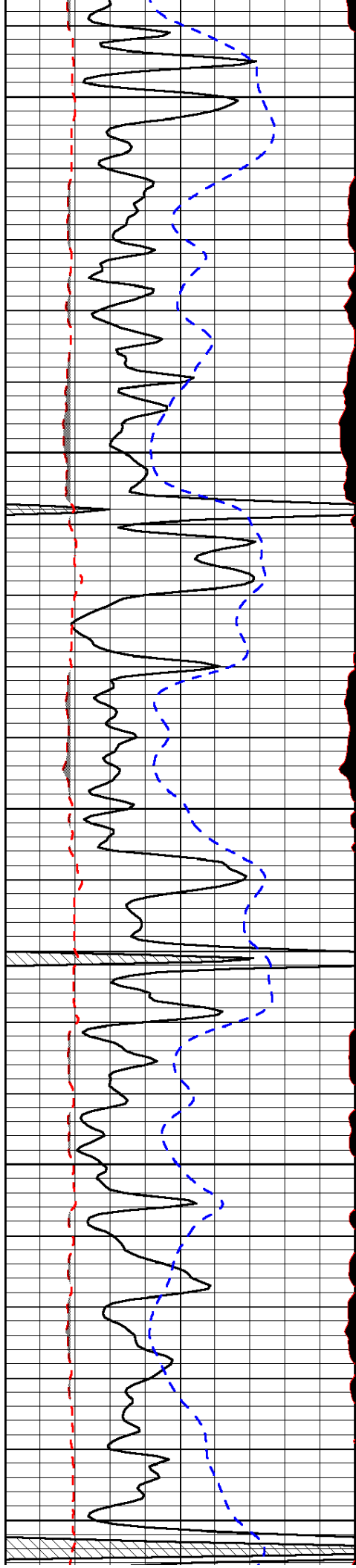
Database File: tdi_lilly_1hd.db
 Dataset Pathname: dil/tdistk
 Presentation Format: micro
 Dataset Creation: Thu Apr 11 18:03:22 2013
 Charted by: Depth in Feet scaled 1:240

0	Gamma Ray (GAPI)	150
6	MCAL (in)	16
2.875	Mud Cake (in)	7.875
-200	SP (mV)	0

0	Micro Inverse 1 X 1 (Ohm-m)	40
0	Micro Normal 2" (Ohm-m)	40
10000	Line Weight (lb)	0

LSPD
(ft/min)





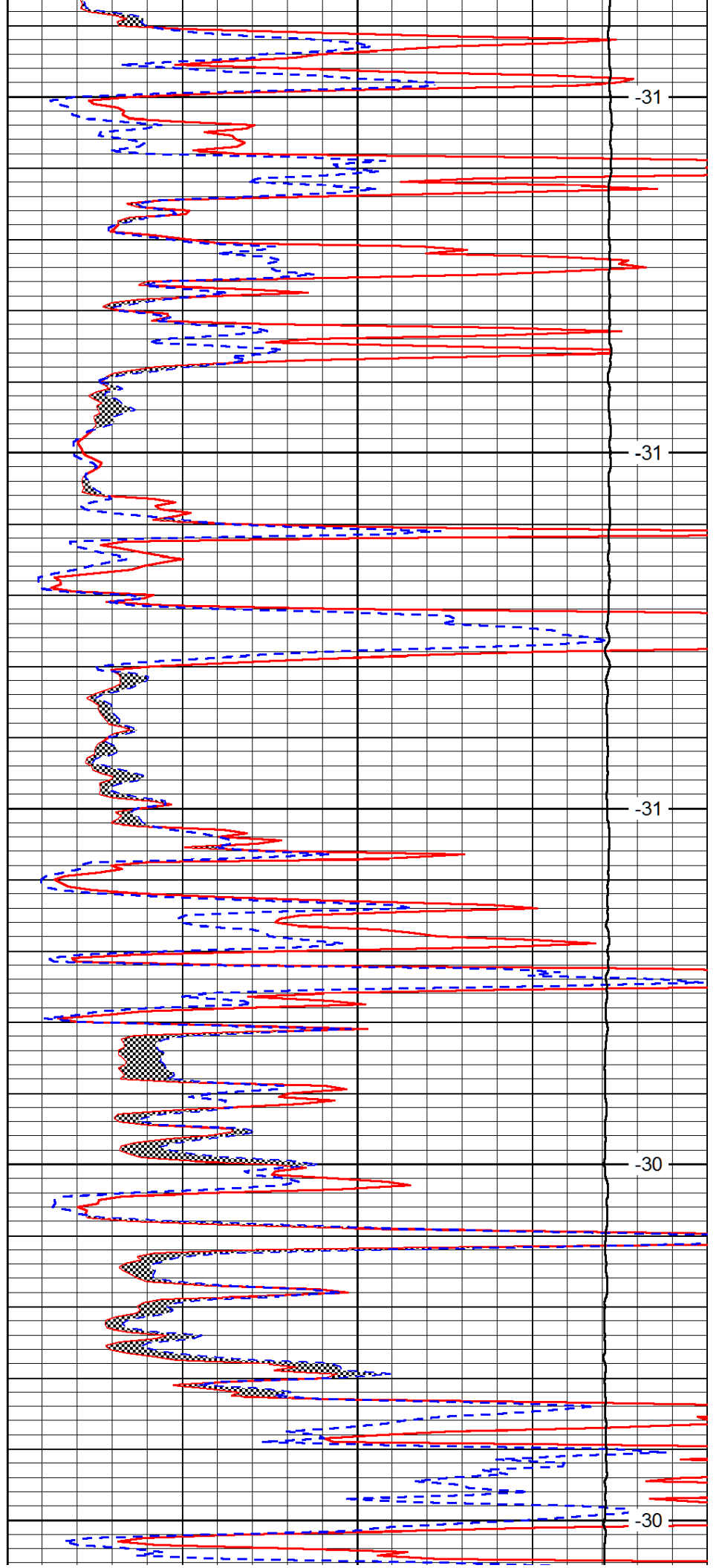
3100

3150

3200

3250

3300



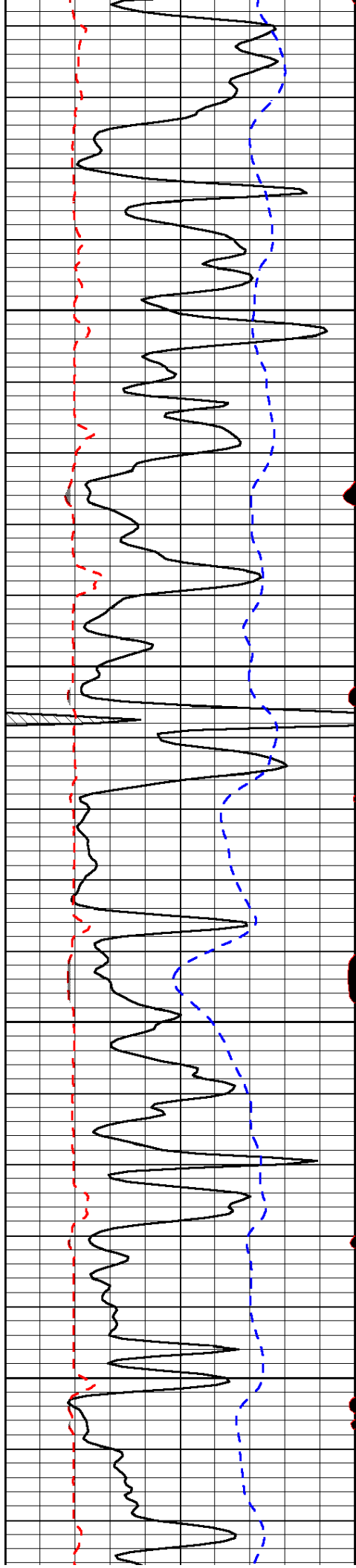
-31

-31

-31

-30

-30

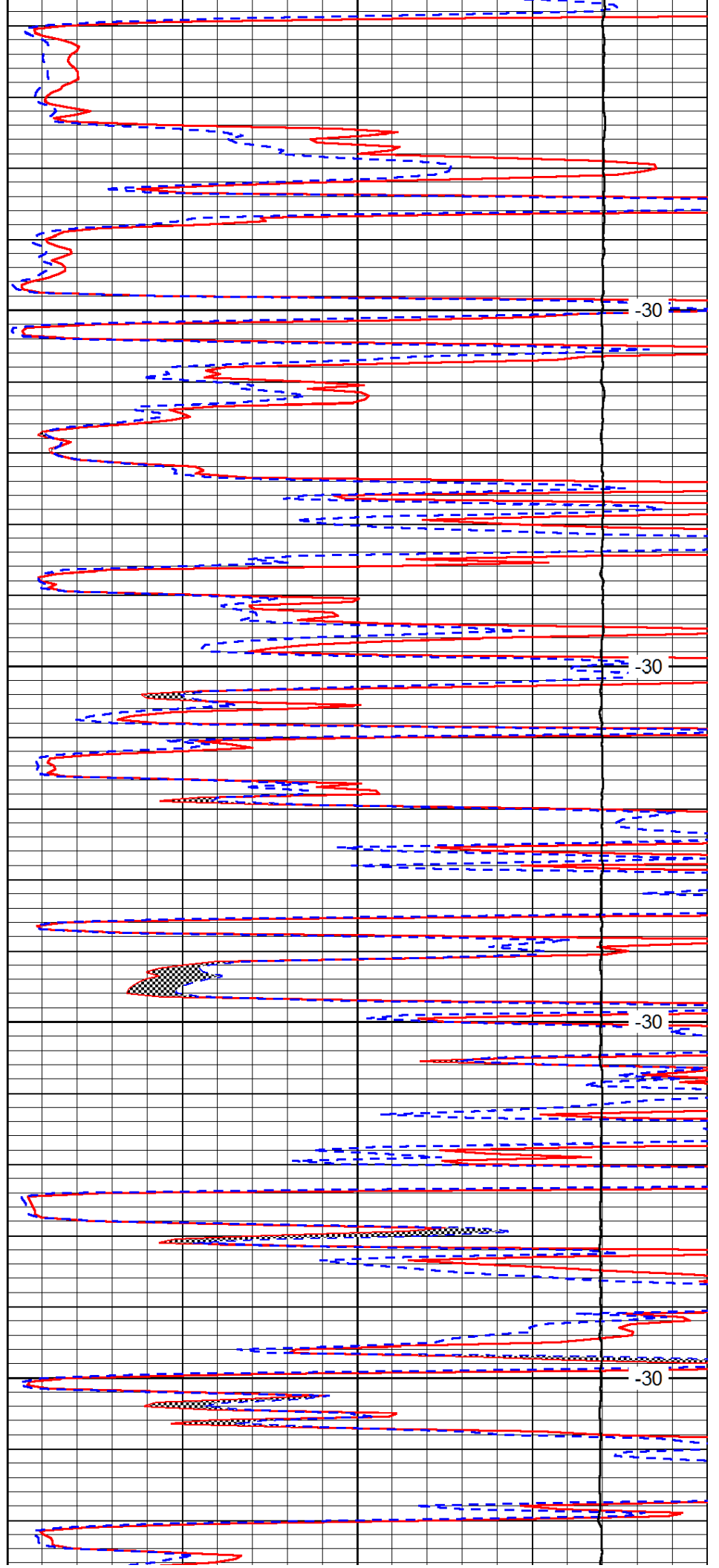


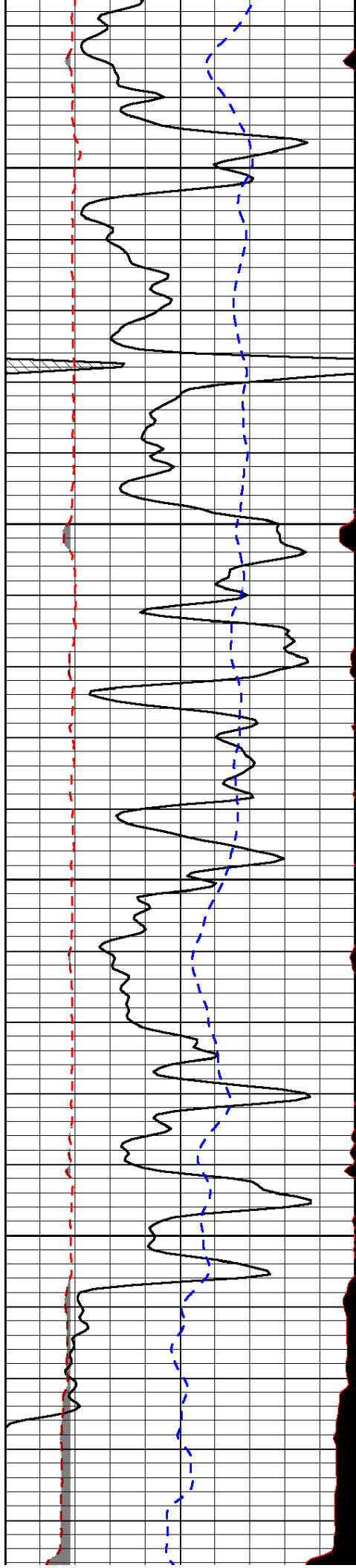
3350

3400

3450

3500



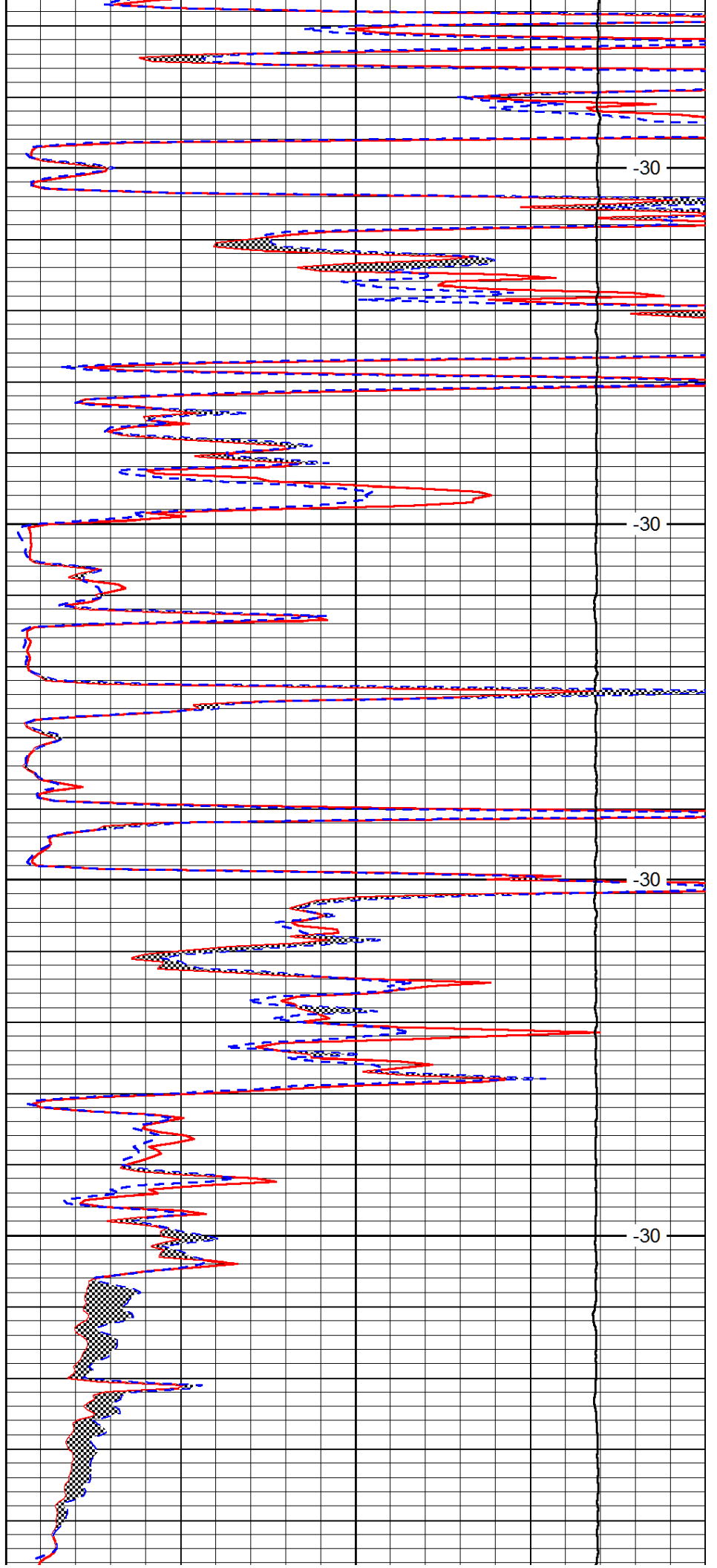


3550

3600

3650

3700



-30

-30

-30

-30

0	Gamma Ray (GAPI)	150
6	MCAL (in)	16
2.875	Mud Cake (in)	7.875
-200	SP (mV)	0

3750

0	Micro Inverse 1 X 1 (Ohm-m)	40
0	Micro Normal 2" (Ohm-m)	40
10000	Line Weight (lb)	0
		LSPD (ft/min)