



Pioneer Energy Services

Dual Compensated Porosity Log

API No.	15-065-23,917-00-00		
Company	H & C Oil Operating, Inc.		
Well	Steelsmith No. 25 - 2		
Field	Unnamed		
County	Graham		
State	Kansas		
Location	NW SE NE 1650' FNL & 990' FEL		
Sec: 25	Twp: 9 S	Rge: 25 W	
Other Services	DILMEL		

Permanent Datum	Ground Level	Elevation 2585
Log Measured From	Kelly Bushing	5 Ft. Above Perm. Datum
Drilling Measured From	Kelly Bushing	
Date	4/12/2013	

Run Number	One
Type Log	CNL / CDL
Depth Driller	4200
Depth Logger	4199
Bottom Logged Interval	4178
Top Logged Interval	3550
Type Fluid In Hole	Chemical
Salinity, PPM CL	1100
Density	9.2
Level	Full
Max. Rec. Temp. F	118
Operating Rig Time	4 Hours
Equipment -- Location	17 Hays
Recorded By	D. Martin
Witnessed By	Marc Downing

Borehole Record				Casing Record			
Run No.	Bit	From	To	Size	Wgt.	From	To
One	12.25	00	292	8.625	23#	00	292
Two	7.875	292	TD				

<<< Fold Here >>>

All interpretations are opinions based on inferences from electrical or other measurements and we cannot and do not guarantee the accuracy or correctness of any interpretation, and we shall not, except in the case of gross or willful negligence on our part, be liable or responsible for any loss, costs, damages, or expenses incurred or sustained by anyone resulting from any interpretation made by any of our officers, agents or employees. These interpretations are also subject to our general terms and conditions set out in our current Price Schedule.

Comments

Thank you for using Log-Tech, Inc.
(785) 625-3858

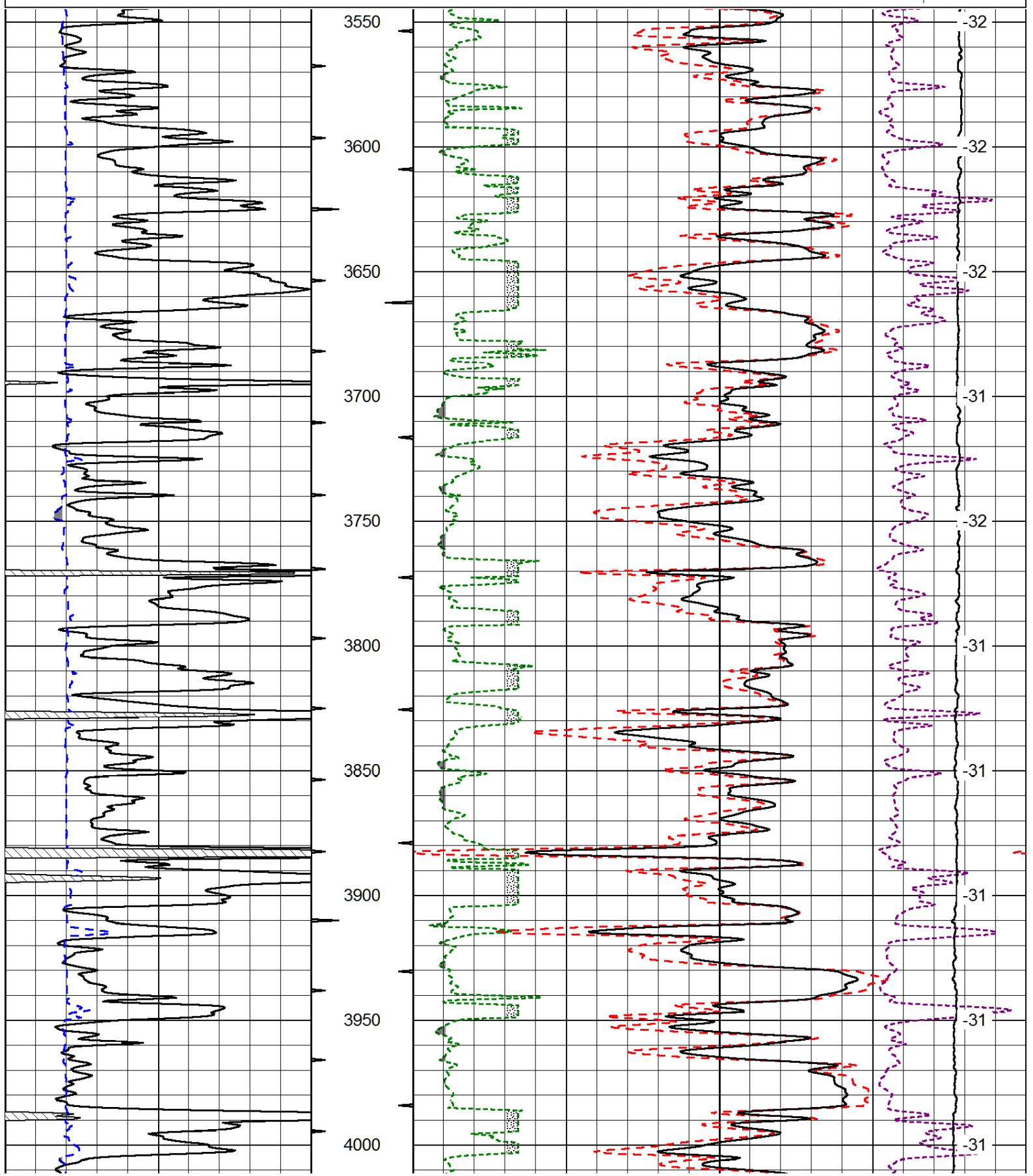
Wakeeney, KS
N to Red Line Rd.(H Rd.),
10 W to 160 Rd., 1/2 N, W Into

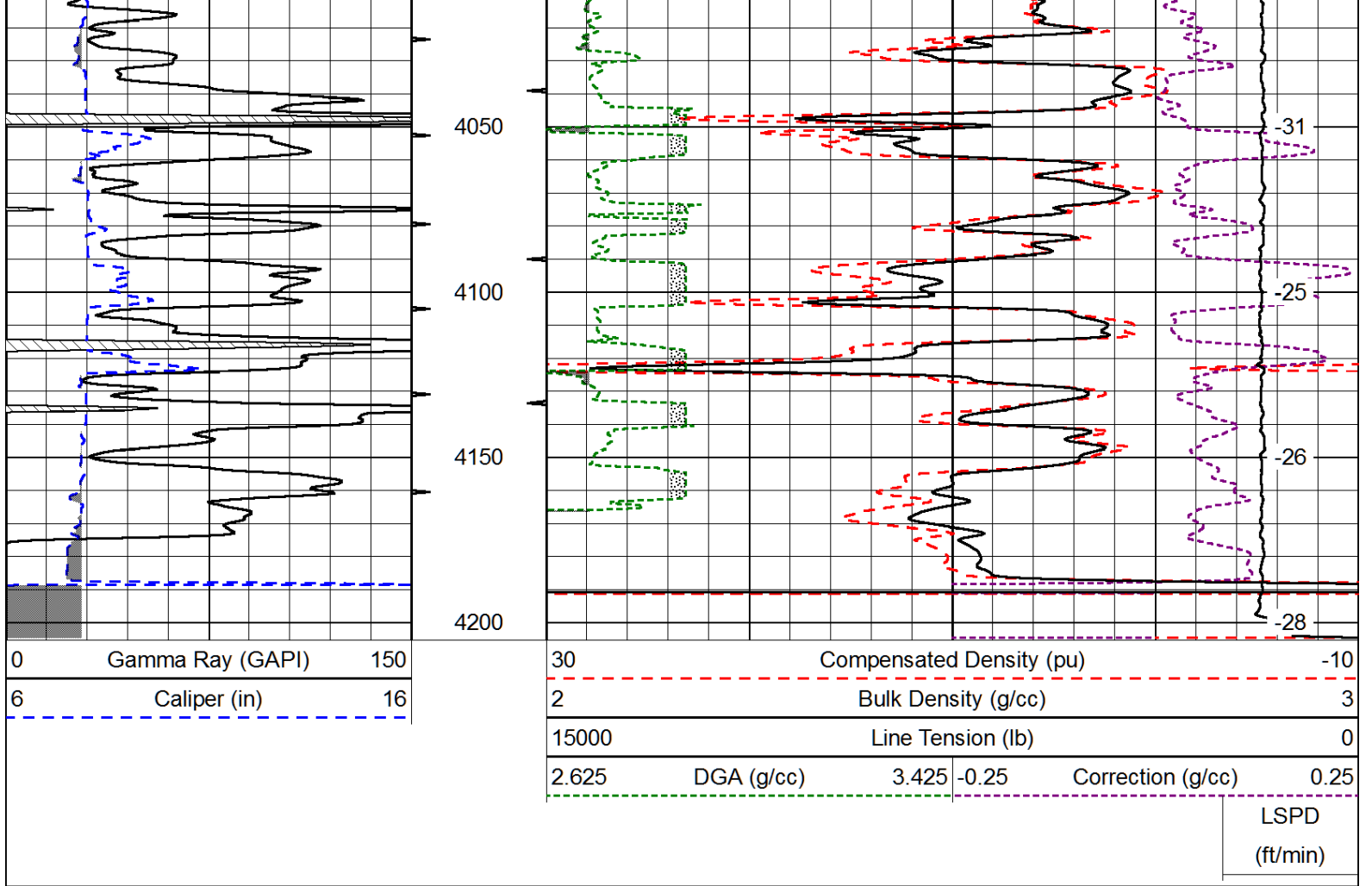
Database File: h&c_steelsmith_25-2hd.db
 Dataset Pathname: DIL/h&cstk
 Presentation Format: cdl
 Dataset Creation: Sat Apr 13 01:12:17 2013
 Charted by: Depth in Feet scaled 1:600

0	Gamma Ray (GAPI)	150
6	Caliper (in)	16

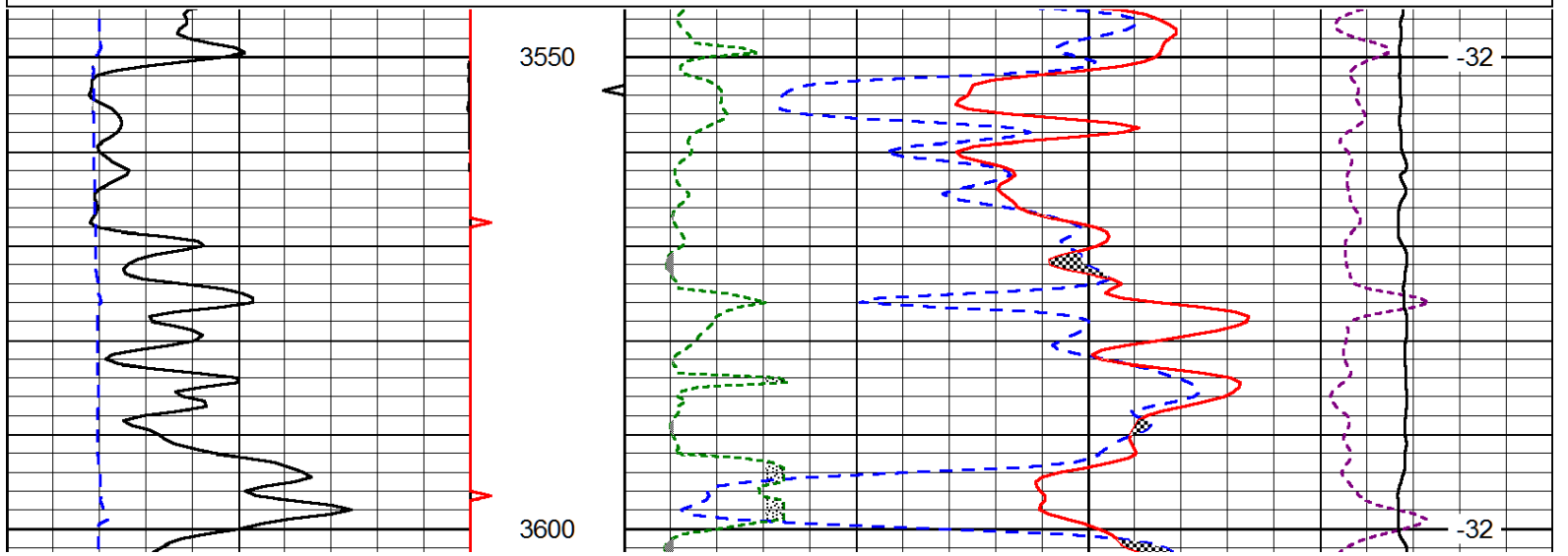
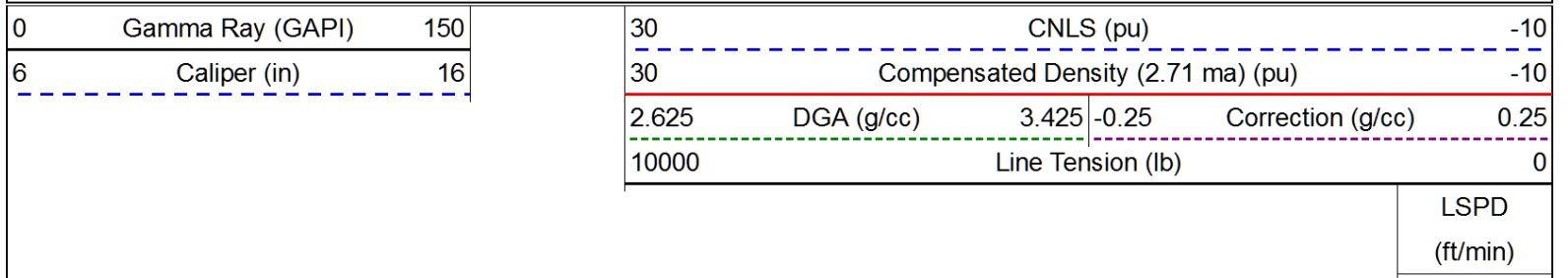
30	Compensated Density (pu)			-10	
2	Bulk Density (g/cc)			3	
15000	Line Tension (lb)			0	
2.625	DGA (g/cc)	3.425	-0.25	Correction (g/cc)	0.25

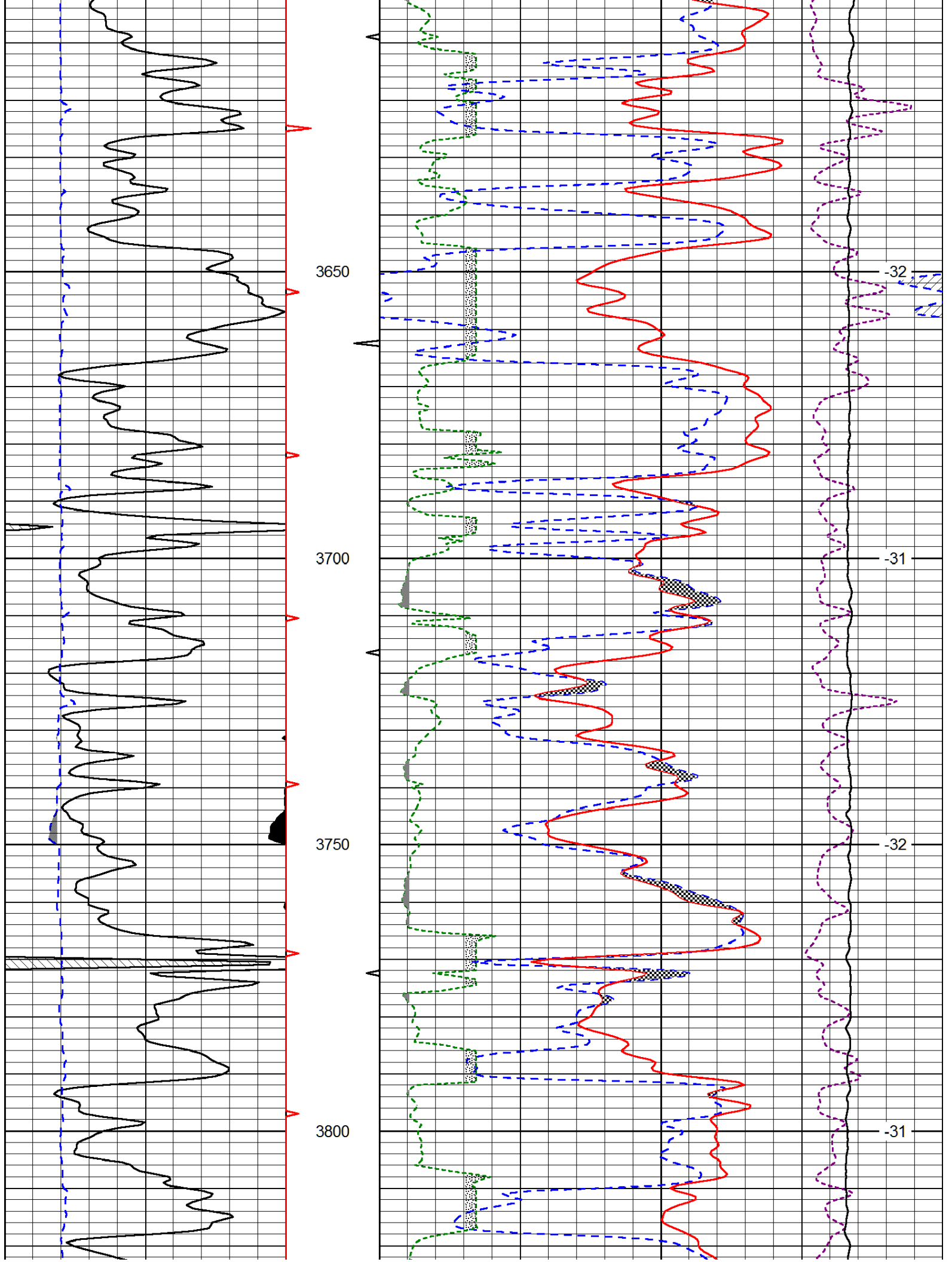
LSPD
(ft/min)

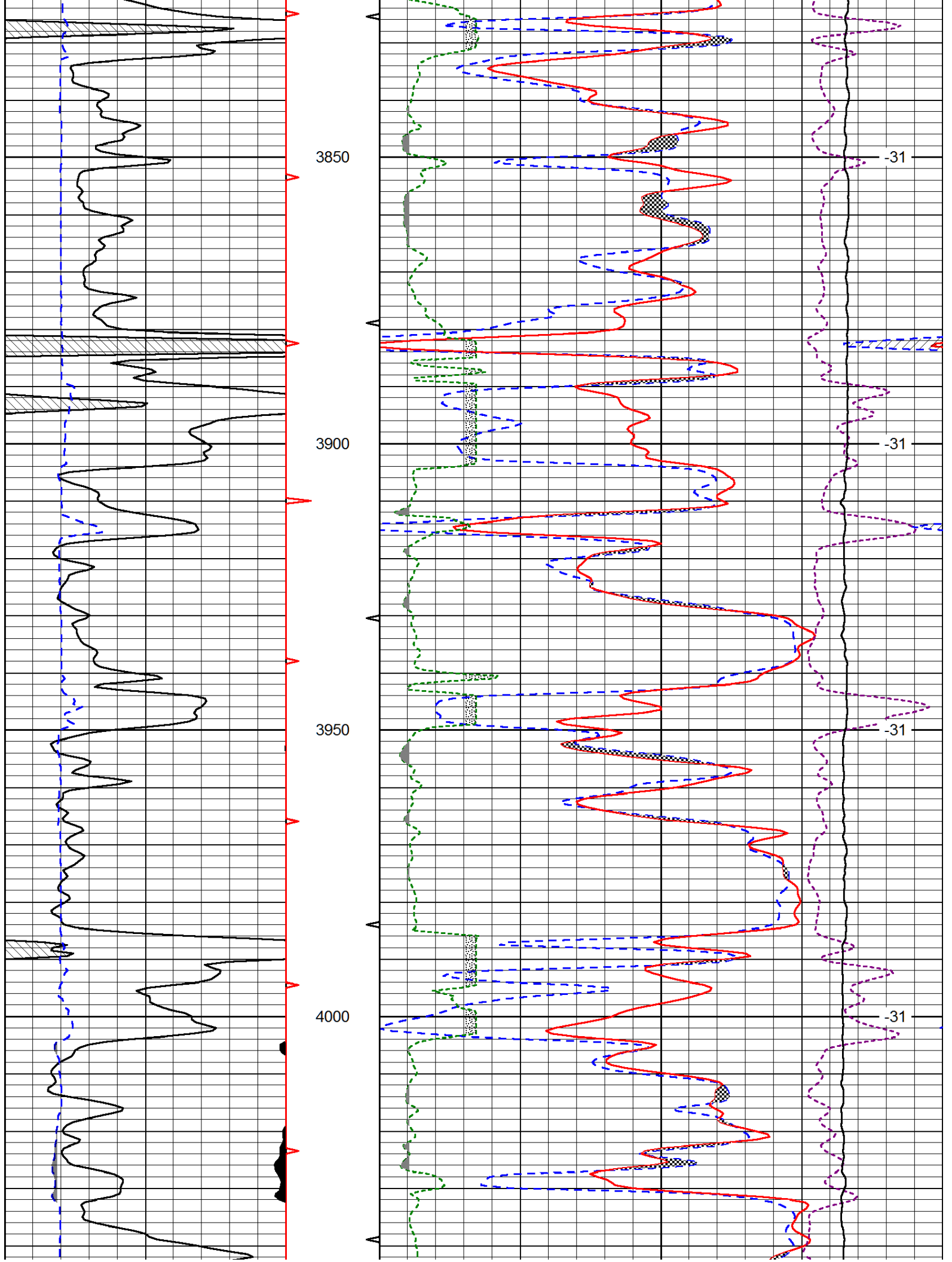


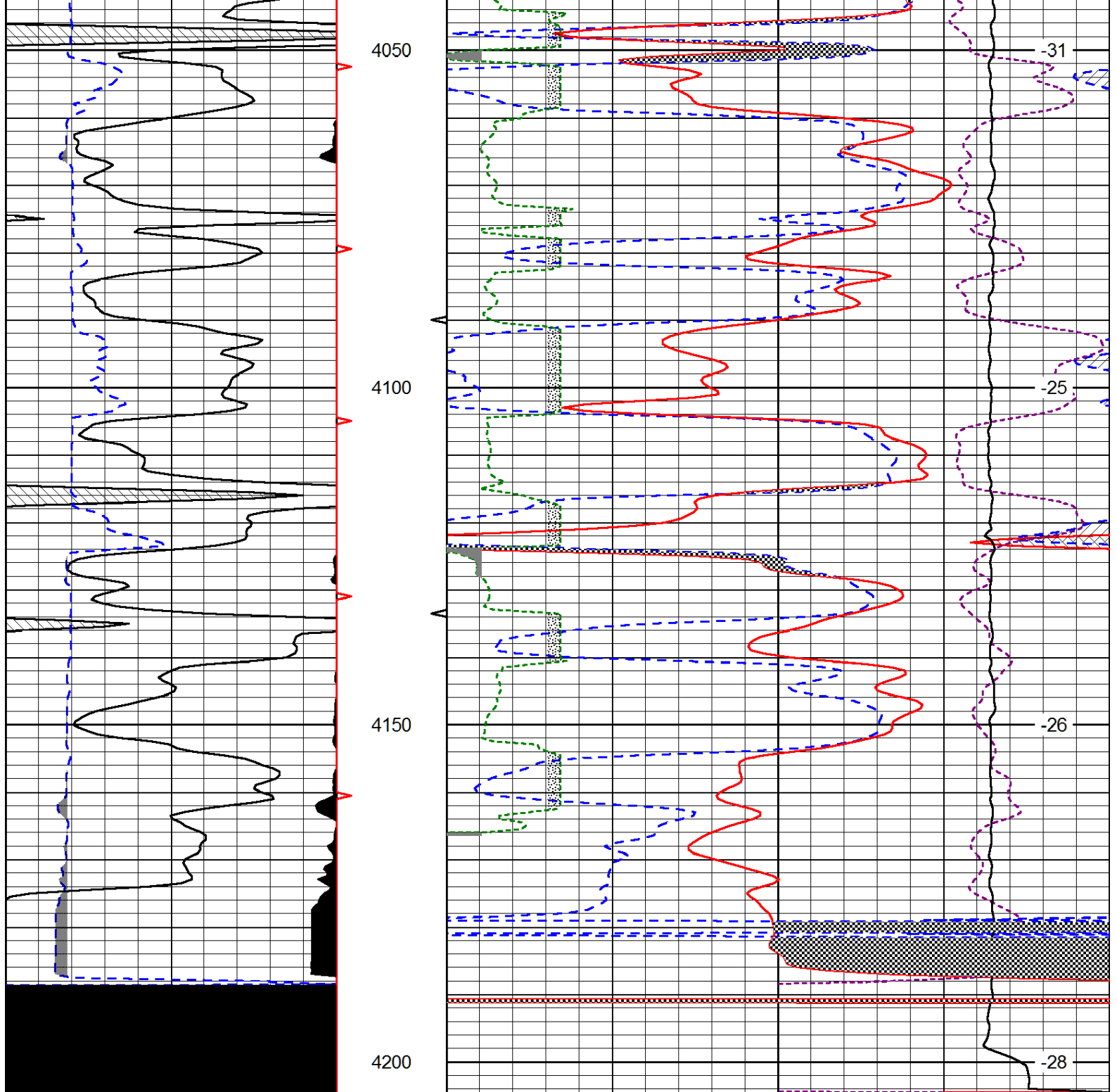


Database File: h&c_steelSmith_25-2hd.db
 Dataset Pathname: DIL/h&cstk
 Presentation Format: cndlspec
 Dataset Creation: Sat Apr 13 01:12:17 2013
 Charted by: Depth in Feet scaled 1:240









0	Gamma Ray (GAPI)	150	30	CNLS (pu)	-10
6	Caliper (in)	16	30	Compensated Density (2.71 ma) (pu)	-10
2.625	DGA (g/cc)	3.425	-0.25	Correction (g/cc)	0.25
10000	Line Tension (lb)				0
				LSPD (ft/min)	