

JUSTIN D. CARTER

CONSULTING GEOLOGIST

Scale 1:240 (5"=100') Imperial
Measured Depth Log

Well Name: BAUMER #65
Location: SE, NW Sec. 27 - 11S - 17W Ellis Co, KS
License Number: 15-051-26449-0000
Spud Date: 03/21/13
Surface Coordinates: 1980' FNL & 1980' FWL
Region: Bemis-Shutts
Drilling Completed: 03/28/13

Bottom Hole 1287': 1 DEG, 3620': 1.5 DEG
Coordinates:
Ground Elevation (ft): 2064' K.B. Elevation (ft): 2072'
Logged Interval (ft): 2500' To: 3620' Total Depth (ft): 3620'
Formation: TOPEKA, L/KC, ARBUCKLE
Type of Drilling Fluid: Chemical Mud

Printed by WellSight Log Viewer from WellSight Systems 1-800-447-1534 www.WellSight.com

OPERATOR

Company: CITATION OIL & GAS CORP.
Address: 14077 Cutten Road
Houston, TX 77069
Co. Geo.: Mr. Cameron Wieding

GEOLOGIST

Name: Justin D. Carter
Company: Consulting Geologist
Address: 5945 Westridge Dr.
Great Bend, KS 67530
Home: 620-603-6399, Cell: 620-655-1187

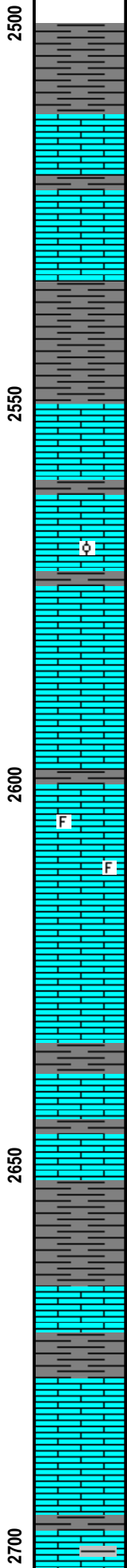
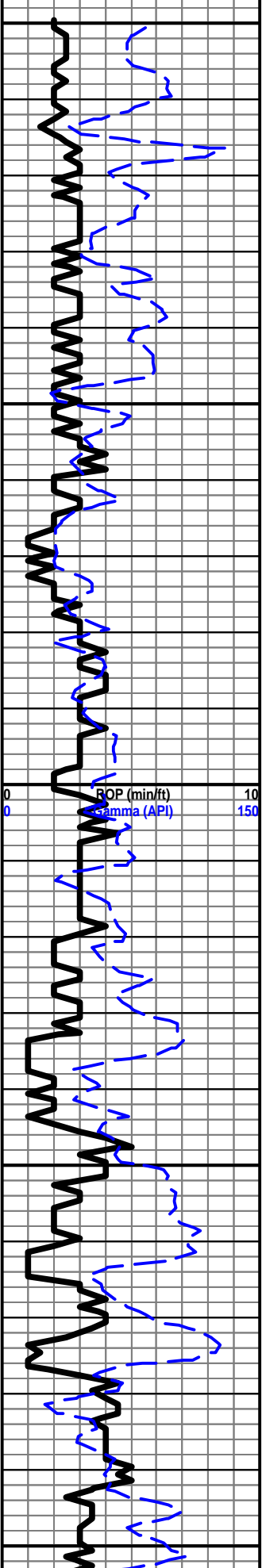
Comments

Drilling Contractor: Duke Drilling Co., Inc. Rig #2
Tool Pusher: Dion Vasquez

13 3/8" conductor casing set at 85'
8 5/8" surface casing set at 1320'

Mud: Drill Mud
Engineer: Caleb McCool

Open-Hole Loggers: Nabors Services Co.



V/FINE GRAINED SAMPLES

SH- GRN GY, SFT TO FRM IP, BLKY, SLTY IP TO LMY IP

LS- CRM LT TN, BRITT, RE-XLN MTRX IPTO TR SUB-SUCRO, NO FLO, NO VIS POR

LS- OFF WHT LT TN, HRD TO BRITT IP, VF-XLN, RE-XLN MTRX IP, NO FLO, NO VIS POR

SH- GY GRN, FRM, BLKY, LMY THRU TO TR SLTY

LS- WHT BFF, HRD DNS, VF-XLN, RE-XLN MTRX IP, IMBED SH IP, NO FLO, NO VIS POR

LS- OFF WHT LT GY, BRITT, F/VF-XLN, SUCRO MTRX THRU TO TR GRST, TR IMBED OOL, NO FLO, TR INTER-OOL POR TO FR INTER-XLN POR IP, NS

LS- WHT, HRD, VF-XLN, RE-XLN MTRX IP, NO FLO, NO VIS POR

LS- WHT CRM, HRD, VF-XLN, RE-XLN MTRX IP, TR IMBED GY SH, NO FLO, NO VIS POR

LS- LT GY, BRITT, VF-XLN, SUB-SUCRO MTRX THRU, IMBED FOSS FRAGS IP, NO FLO, NO VIS POR

LS- CRM, BRITT, F/VF-XLN, SUCRO MTRX THRU, NO FLO, PR/FR INTER-XLN POR SCAT THRU, NS

LS- BFF GY, BRITT, VF-XLN, RE-XLN MTRX IP, IMBED GY SH SCAT THRU, NS

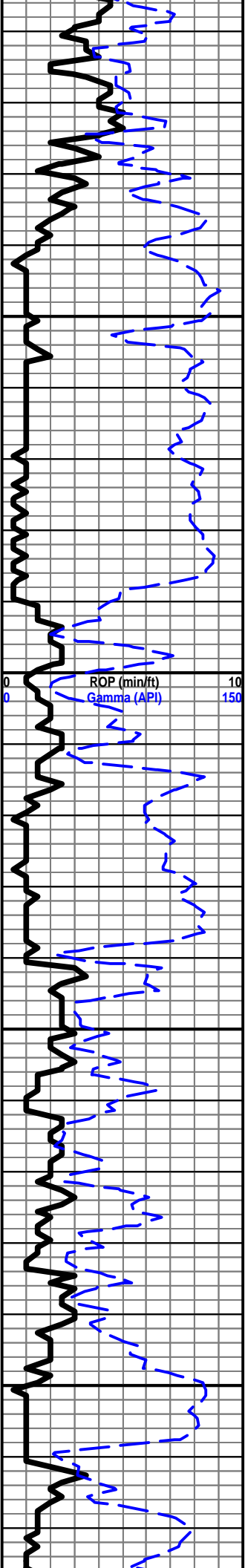
SH- GY, SFT, LMY, BLKY TO TR FISS

LS- CRM, HRD, VF-XLN, RE-XLN MTRX IP, NO FLO, NO VIS POR

LS- OFF WHT LT GY, HRD, VF-XLN, RE-XLN MTRX IPTO SUB-SUCRO MTRX IP, NO FLO, NO VIS POR

LS- CRM BFF, VF-XLN, RE-XLN MTRX IP, IMBED SH IP, NO FLO, NO VIS POR

2:00 P.M. 03/26/13	
	CN
DRILL W/ NATIVE MUD	
	CN
	CN
	CN
	CN
	CN
	CN
	CN
	CN
12:00 A.M. 03/27/13	
	CN

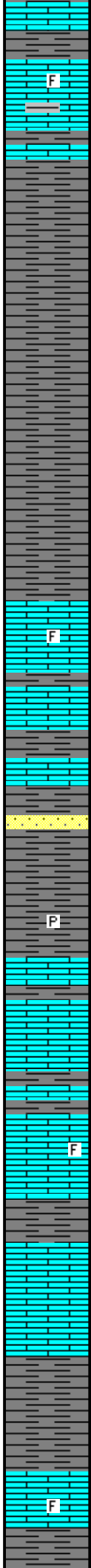


2750

2800

2850

2900



LS- LT TN, HRD, VF-XLN, RE-XLN MTRX IP TO TR SUCRO MTRX, TR IMBED FOSS FRAGS, TR IMBED SH, NO FLO, TR INTER-XLN POR TO NO VIS POR THRU, NS

SH- DK GY, SFT, LMY, FISS

SH- DK GY, SFT, FISS

SH- GY, SFT, LMY THRU, GMMY THRU

SH- GY, SFT, LMY, GMMY

LS- LT TN LT GY, HRD, VF-XLN, SUB-SUCRO MTRX THRU, IMBED FOSS FRAGS SCAT THRU, TR INTER-FOSS POR TO NO VIS POR THRU, NS

LS- BFF, HRD DNS, VF-XLN, RE-XLN MTRX IP, NO FLO, NO VIS POR

SS- OFF WHT LT GY, TT TO FRI IP, F/VF-GRNS, FR SRT, SUB-RND GRNS, CALC CMNT, DISS DK GY SH IP, NO FLO, NO VIS CUT, PR INTER-GRN POR THRU, NS

SH- DK GY, SFT, SLTYIP TO LMY IP, GMMY, TR PYR

LS- OFF WHT LT CRM, HRD DNS, VF-XLN, RE-XLN MTRX IP, TR LAM SH, NO FLO, NO VIS POR

LS- CRM LT BRN, HRD DNS, VF/CRYPTO-XLN, RE-XLN MTRX THRU, TR IMBED SH, TR FOSS FRAGS, NO FLO, NO VIS POR

LS- LT TN OFF WHT, HRD, VF-XLN, RE-XLN MTRX THRU TO TR SUB-SUCRO MTRX, NO FLO, NO VIS POR

SH- DK GY, SFT, LMY THRU, FISS

LS- BFF OFF WHT, BRITT, VF-XLN, RE-XLN MTRX IP TO SUB-CHLKY IP, TR IMBED FOSS FRAGS, NO FLO, NO VIS POR

CN

DISPLACE HOLE @ 2745'

CN

WT 8.7
VIS 46
LCM 2#

CN

CN

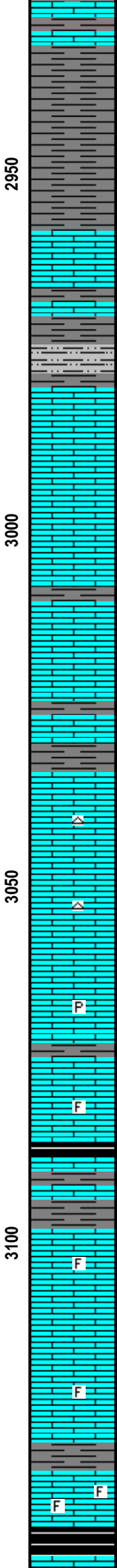
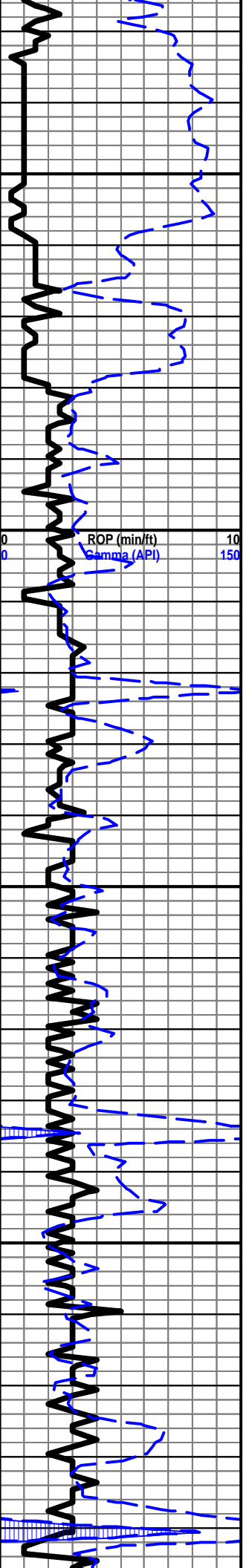
CN

WT 9.0
VIS 42
LCM 2#

CN

ADD PREMIX

CN



SH- DK GY GY, SFT, LMY, BLKY TO SLI GMMY IP

SH- GRN DK GY, FRM TO SFT IP, SLTY IP TO LMY IP

LS- OFF WHT LT GY, BRITT, VF-XLN, RE-XLN MTRX IPTO SUB-SUCRO IP, DISS DK GY SH IP SCAT THRU, NO FLO, NO VIS POR

SH- GRN LT GY, FRM, SLTY, V-FINE GRN SLTST IP

TOPEKA 2979' (-907')

LS- LT GY, HRD DNS, VF-XLN, RE-XLN MTRX THRU, NO FLO, NO VIS POR

LS- OFF WHT, BRITT, VF-XLN, RE-XLN MTRX IP TO SUB-CHLKY IP, NO FLO, NO VIS POR

LS- CRM TN, BRITT TO HRD IP, F/VF-XLN, SUCRO MTRX IP TO TR RE-XLN, TR SM CALC XLS, NO FLO, 1 SAMPLE W/ TR BRIT YEL GLD FLO W/ FAINT SLO BLU STRM CUT, PR INTER-XLN POR TO NO VIS POR THRU, NO ODOR

LS- CRM, HRD DNS, CRYPTO-XLN, RE-XLN MTRX IP, TR LT CRM CHRT, NO FLO, NO VIS POR

LS- CRM, HRD DNS, VF-XLN, RE-XLN MTRX THRU, TR LT CRM CHRT, NO FLO, NO VIS POR

LS- OFF WHT BFF, HRD DNS, VF-XLN, RE-XLN MTRX IP, TR PYR, NO FLO, NO VIS POR

LS- CRM LT GRY, HRD, VF-XLN, RE-XLN MTRX IP, IMBED FOSS FRAGS IP, NO FLO, TR INTER-XLN POR TO NO VIS POR THRU, NS

LS- LT GY, HRD, VF-XLN, SUCRO MTRX IPTO RE-XLN MTRX IP, IMBED FOSS FRAGS IP, TR SM CALC XLS, NO FLO, NO VIS POR

LS- CRM OFF WHT, HRD, VF-XLN, SUB-SUCRO MTRX IP TO TR RE-XLN, IMBED SH IP, TR FOSS FRAGS, NO FLO, NO VIS CUT, NO VIS POR, TR BLK RESIDUAL STAIN

LS- OFF WHT, BRITT, F/VF-XLN, SUCRO MTRX IP TO TR RE-XLN TO TR SUB-CHLKY, IMBED FOSS FRAGS SCAT THRU, 2 SAMPLES W/ TR BRIT YEL GLD W/ PR FLUSH CUT, PR INTER-XLN POR SCAT THRU, TR STAIN, NO ODOR

CN

CN

CN

CN

MUD CHECK @ 2970'

WT 9.0

VIS 65

LCM 2#

PV 13

YP 8

PH 10.5

FIL 9.0

CHL 12,000

ADD PREMIX

CN

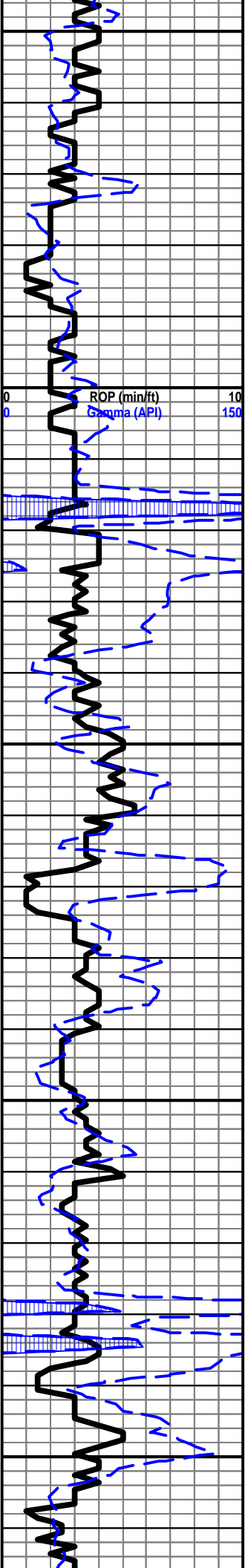
CN

WT 9.0

VIS 55

LCM 2#

CN



3150
3200
3250
3300
3350

LS- WHT, HRD, VF-XLN, SUB-CHLKY IP TO GRST IP, NO FLO, NO VIS POR

LS- CRM, HRD DNS, VF-XLN, RE-XLN MTRX IP, NO FLO, NO VIS POR

LS- BFF, HRD, VF-XLN, RE-XLN MTRX THRU TO TR SUB-CHLKY, NO FLO, NO VIS POR

LS- WHT LT GY, BRITT, VF-XLN, SUCRO MTRX IPTO SUB-CHLKY IP, SFT WHT CHLK IP, IMBED OOL IP, BRIT YEL GLD FLO SCAT THRU, PR FLUSH TO FR SLO BLU STRM CUT, FR INTER-OOL POR IP, STAIN IN 40%, FAINT ODOR

LS- TN, HRD DNS, VF-XLN, RE-XLN MTRX THRU, NO FLO, NO VIS POR

HEEBNER 3217' (-1145')

SH- LT GY, FRM TO SFT IP, SLTY IPTO LMY IP, BLKY

TORONTO 3238' (-1166')

LS- LT CRM, HRD, VF-XLN, RE-XLN MTRX THRU TO TR SUB-CHLKY, NO FLO, NO VIS POR

LS- BFF OFF WHT, HRD DNS, VF-XLN, RE-XLN MTRX THRU, NO FLO, NO VIS POR

SH- DK GY, SFT, LMY, FISS

L/KC 3265' (-1193')

LS- CRM, HRD DNS, VF-XLN, RE-XLN MTRX THRU TO TR SUB-SUCRO, TR IMBED OOL, NO FLO, NO VIS POR

LS- CRM, HRD DNS, VF-XLN, RE-XLN MTRX THRU, TR OFF WHT CHRT, NO FLO, NO VIS POR

LS- OFF WHT TN, BRITT TO HRD IP, F/VF-XLN, SUCRO MTRX IP TO TR RE-XLN MTRX TO TR SUB-CHLKY, IMBED OOL IP, TR LAM GY SH, YEL GLD FLO IP, PR FLUSH TO PR BLU STRM CUT, PR/FR INTER-XLN POR IP, STAIN IN 50%, MILD ODOR

LS- OFF WHT TN, BRITT, F/VF-XLN, SUCRO MTRX THRU TO TR RE-XLN, LG OOL IMBED IP, TR BRIT BLUISH GLD FLO, FR FLUSH CUT, FR INTER-OOL POR IP TO TR INTER-XLN POR, MILD ODOR, SCAT STAIN THRU

LS- WHT LT TN, BRITT, VF-XLN, SUB-SUCRO TO SUCRO MTRX THRU TO TR SUB-CHLKY, OOLICASTS IP, OOL IP, YEL GLD FLO SCAT THRU, PR FLUSH CUT, PR OOMLD POR IP TO TR INTER-XLN POR TO TR INTER-OOL POR, FAINT ODOR, STAIN IN 70%

CN

WT 9.2
VIS 50
LCM 2#

CN

WT 9.2
VIS 46
LCM 2#

12:00 A.M. 03/28/13 CN

WT 9.2
VIS 45
LCM 2#

CN

-ADD PREMIX-

WT 9.0
VIS 49
LCM 2#

CN

WT 9.2
VIS 42

