



**COMPLETION
& PRODUCTION
SERVICES CO.**

**MICRO
LOG**

Company	CITATION OIL & GAS CORP.	Company	CITATION OIL & GAS CORP.
Well	PUTNAM INV #7	Well	PUTNAM INV #7
Field		Field	
County	GRAHAM	County	GRAHAM
State	KANSAS	State	KANSAS
Location:	API # : 15-065-23887-0000	Other Services	CDL/CNL/PE DIL/SON
Permanent Datum	GROUND LEVEL	Elevation	2303
Log Measured From	KELLY BUSHING 11' A.G.L.	K.B.	2314
Drilling Measured From	KELLY BUSHING	D.F.	2312
		G.L.	2303
	SEC 23 TWP 9S RGE 21W		
	1650' FNL & 330' FWL		
	NW - SW - NW		

Date	2/8/13
Run Number	TWO
Depth Driller	3854
Depth Logger	3855
Bottom Logged Interval	3834
Top Log Interval	2500
Casing Driller	8 5/8"@1761'
Casing Logger	1760
Bit Size	7 7/8"
Type Fluid in Hole	CHEMICAL MUD
Density / Viscosity	9.3/52
pH / Fluid Loss	10.0/8.0
Source of Sample	FLOWLINE
Rim @ Meas. Temp	1.30@98F
Rmf @ Meas. Temp	0.98@98F
Rmc @ Meas. Temp	1.56@98F
Source of Rmf / Rmc	MEASUREMENT
Rim @ BHT	1.11@115F
Time Circulation Stopped	2 HOURS
Time Logger on Bottom	
Maximum Recorded Temperature	115F
Equipment Number	4854
Location	HAYS, KANSAS
Recorded By	JEFF GRONEMEG
Witnessed By	ED GLASSMAN

<<< Fold Here >>>

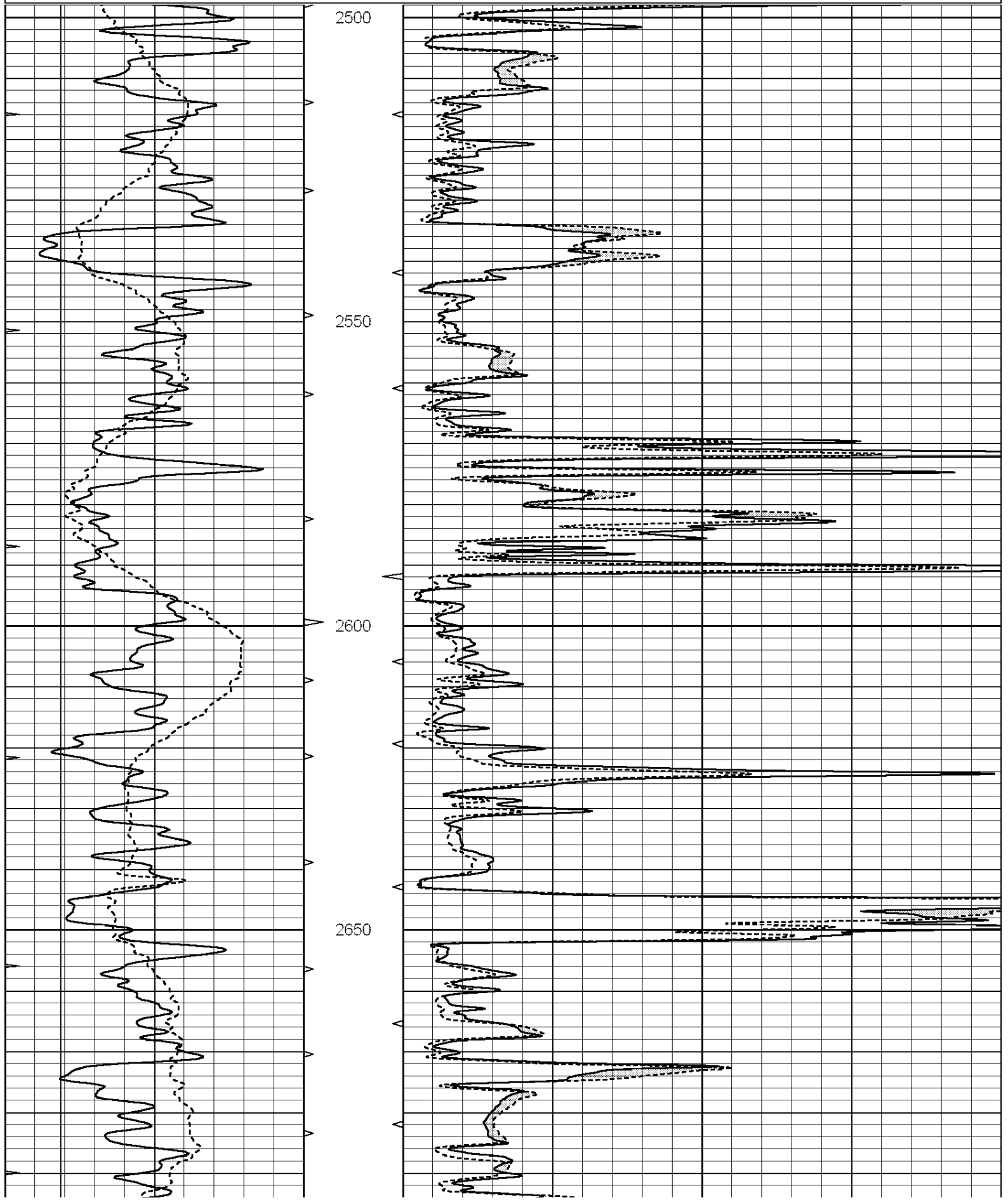
All interpretations are opinions based on inferences from electrical or other measurements and we cannot and do not guarantee the accuracy or correctness of any interpretation, and we shall not, except in the case of gross or willful negligence on our part, be liable or responsible for any loss, costs, damages, or expenses incurred or sustained by anyone resulting from any interpretation made by any of our officers, agents or employees. These interpretations are also subject to our general terms and conditions set out in our current Price Schedule.

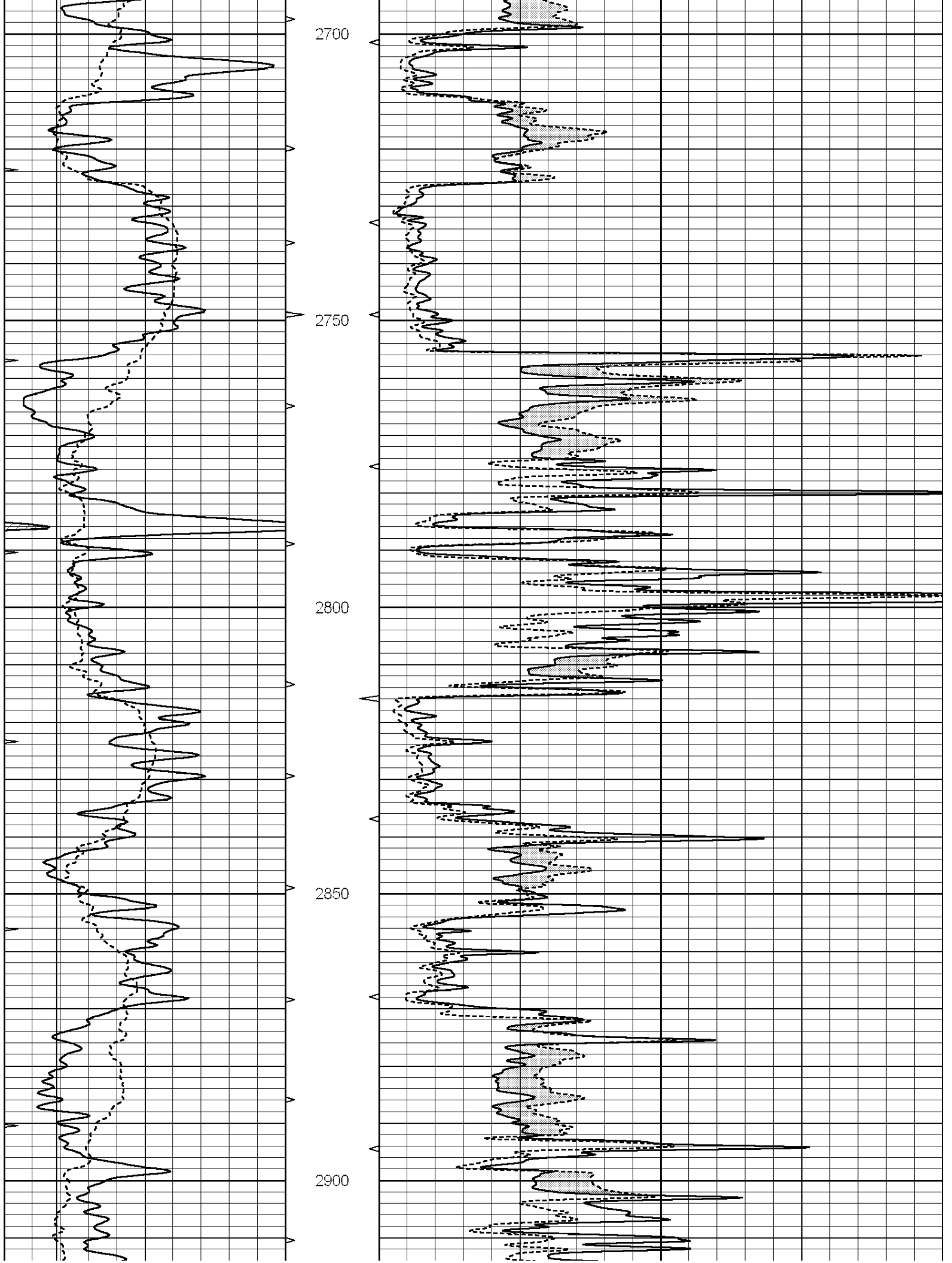
Comments

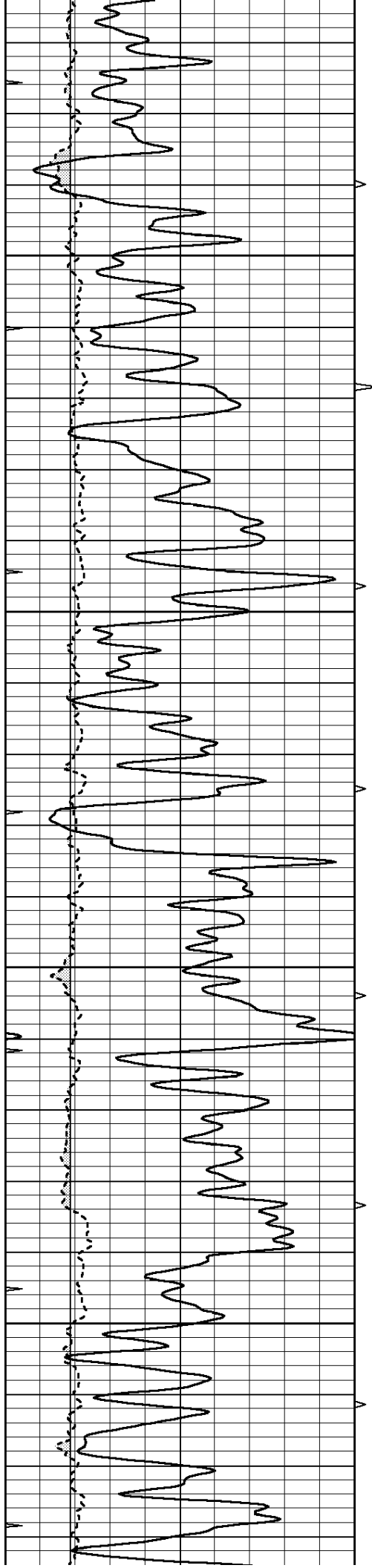
**THANK YOU FOR USING "NABORS" HAYS, KANSAS (785) 628-6395
DIRECTIONS
PALCO, KS - SOUTH TO RD X (REDLINE RD) - WEST 4 MILES TO CHURCH OF GOD
1 1/2 MILES NORTH - EAST INTO**

Database File: 010409pe.db
Dataset Pathname: pass6.1
Presentation Format: _micro
Dataset Creation: Fri Feb 08 15:50:41 2013 by Calc SOC 120430
Charted by: Depth in Feet scaled 1:240

0	GAMMA RAY (GAPI)	150	ABHV	0	MEL1.5 (Ohm-m)	40
6	CALIPER (in)	16	10 (ft3)	0 0	MEL2.0 (Ohm-m)	40
0	MINMK	20	TBHV			
			0 (ft3)	10		





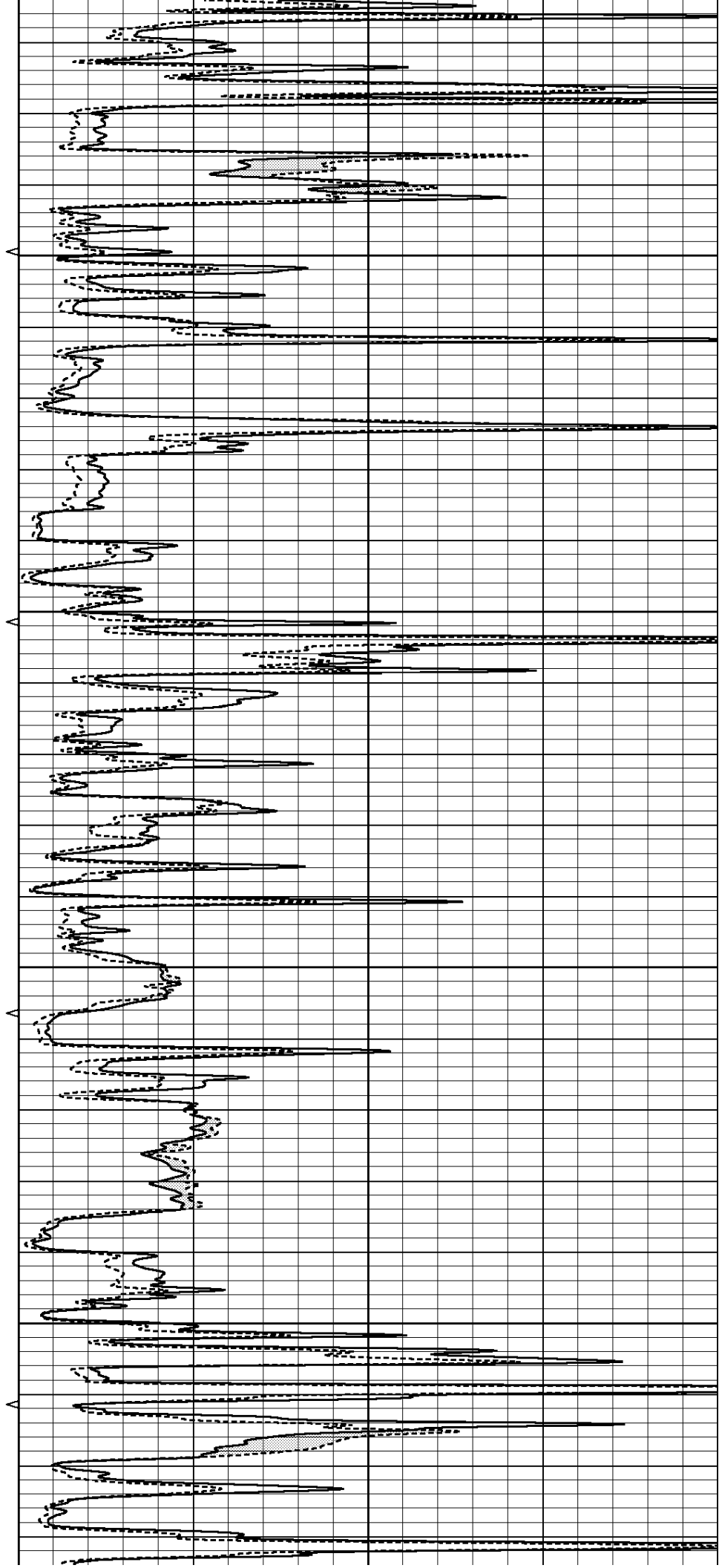


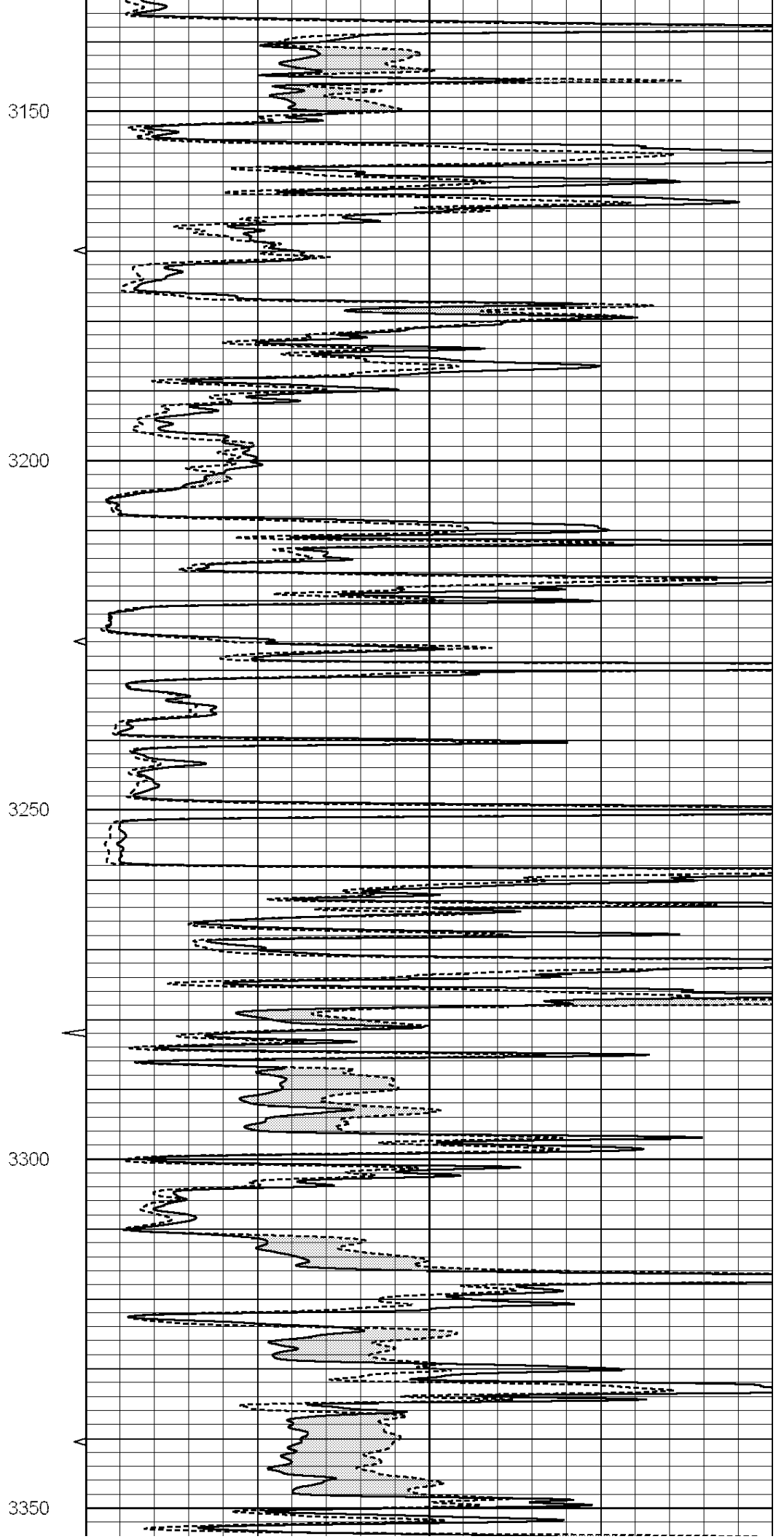
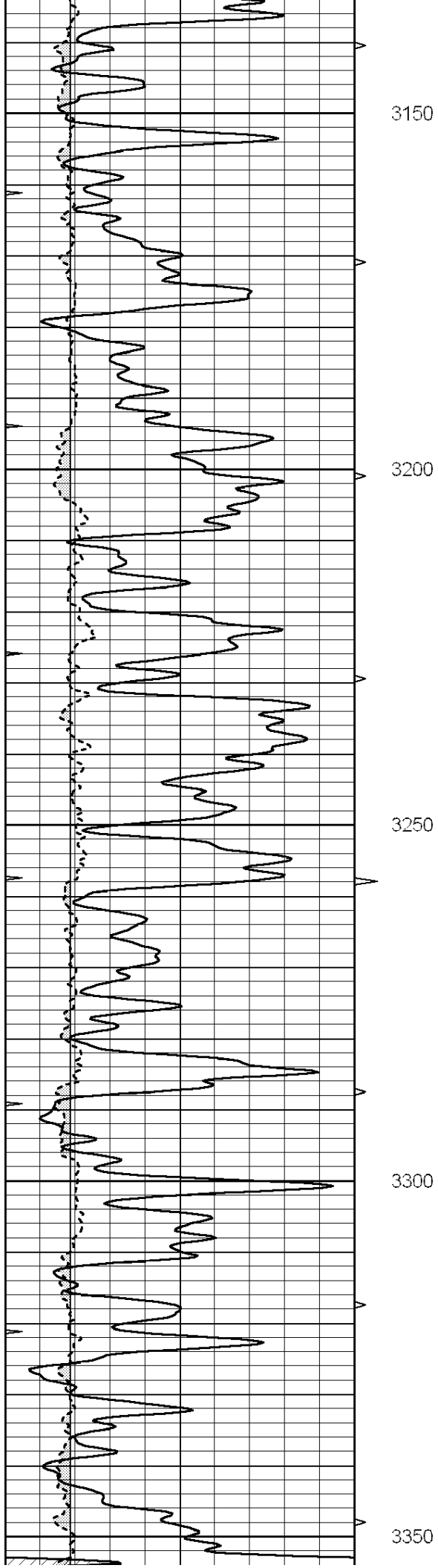
2950

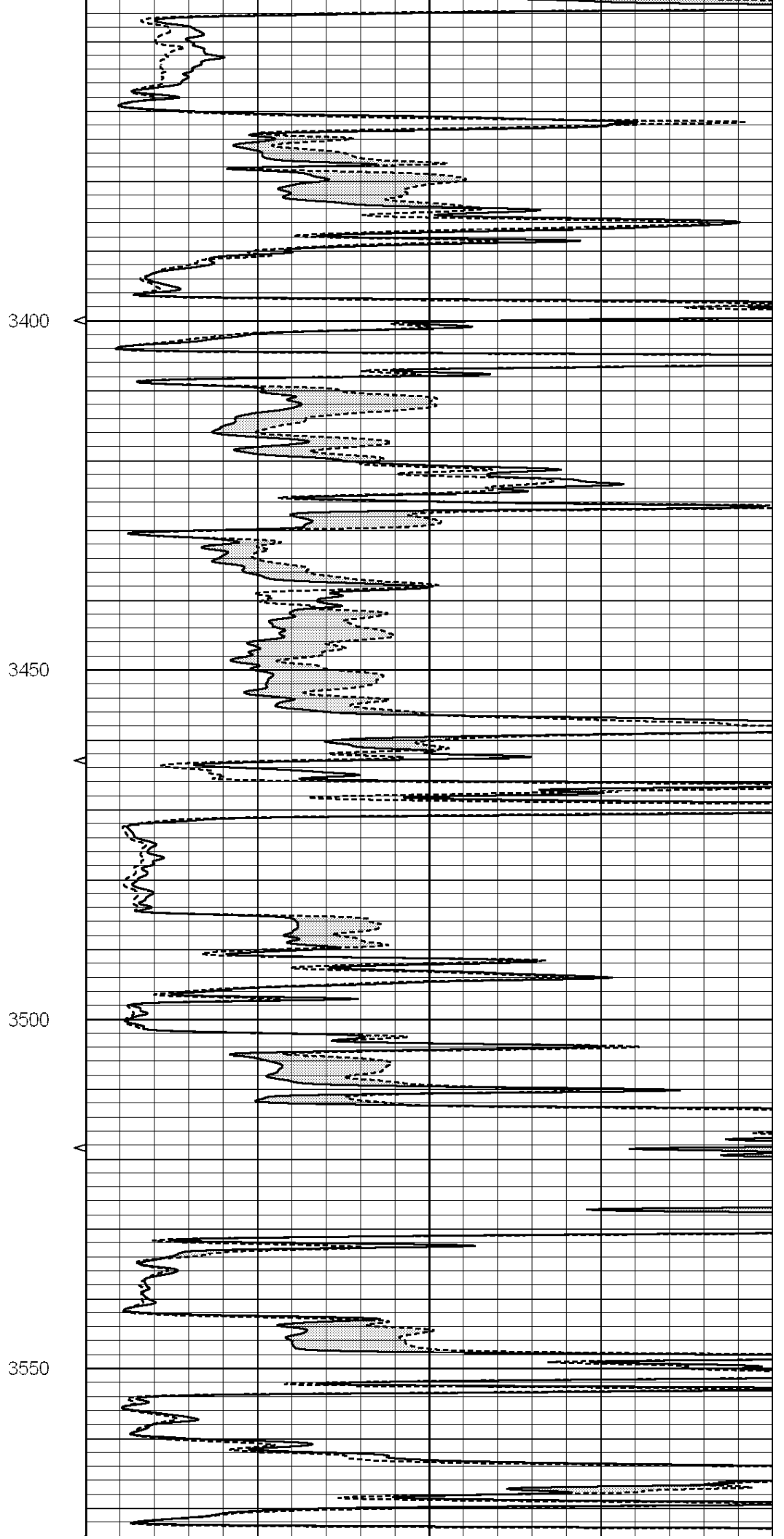
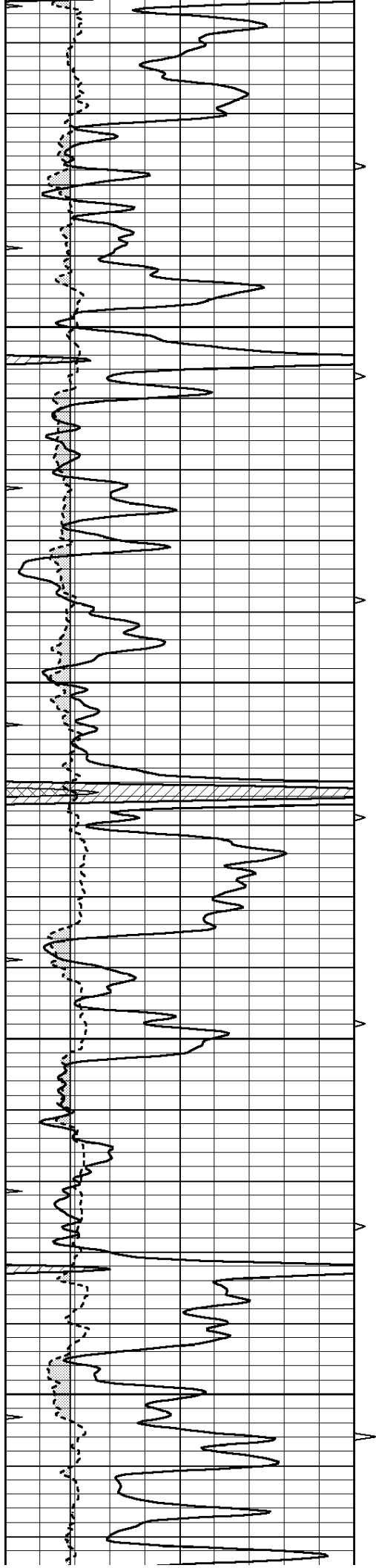
3000

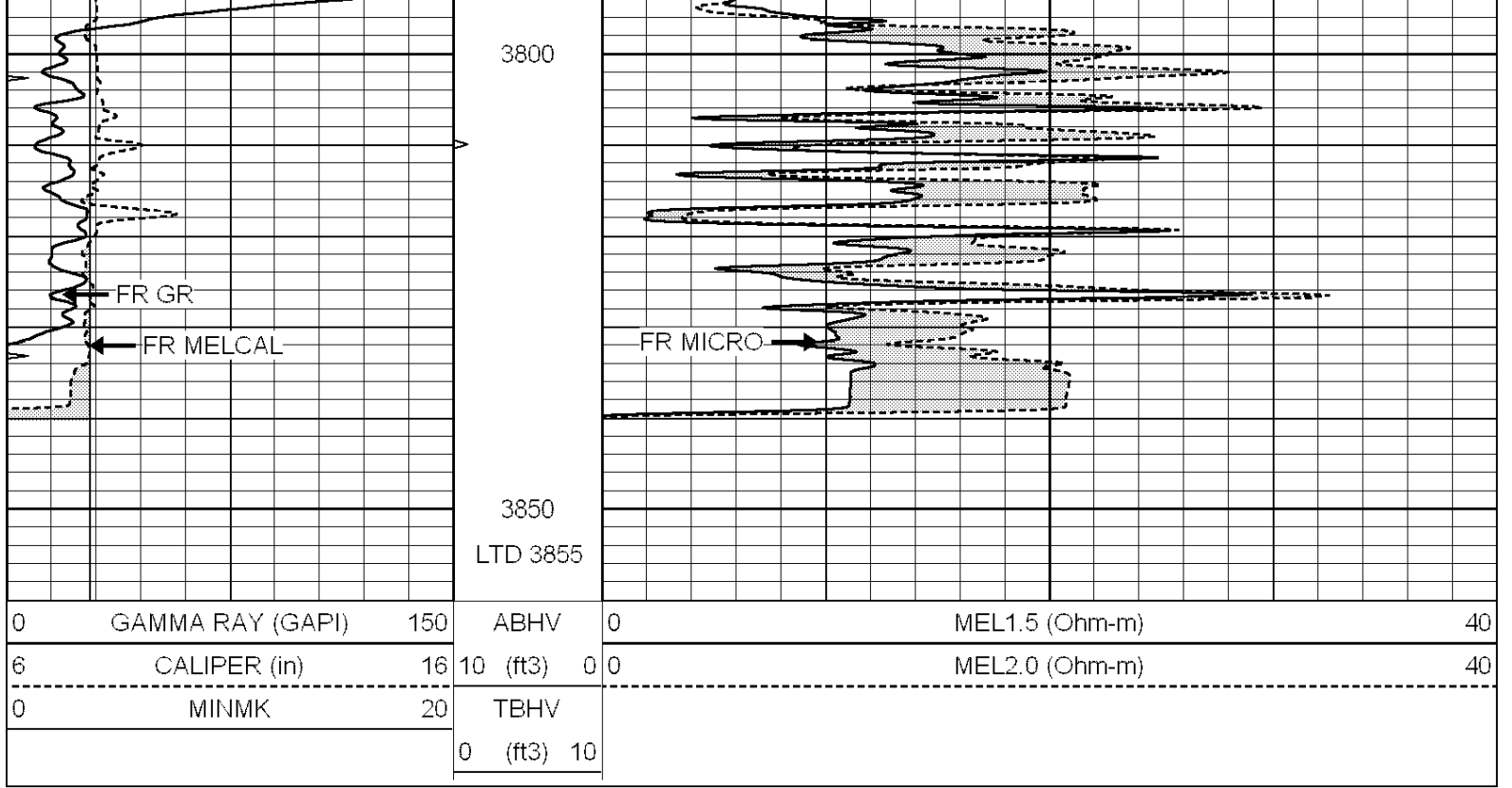
3050

3100







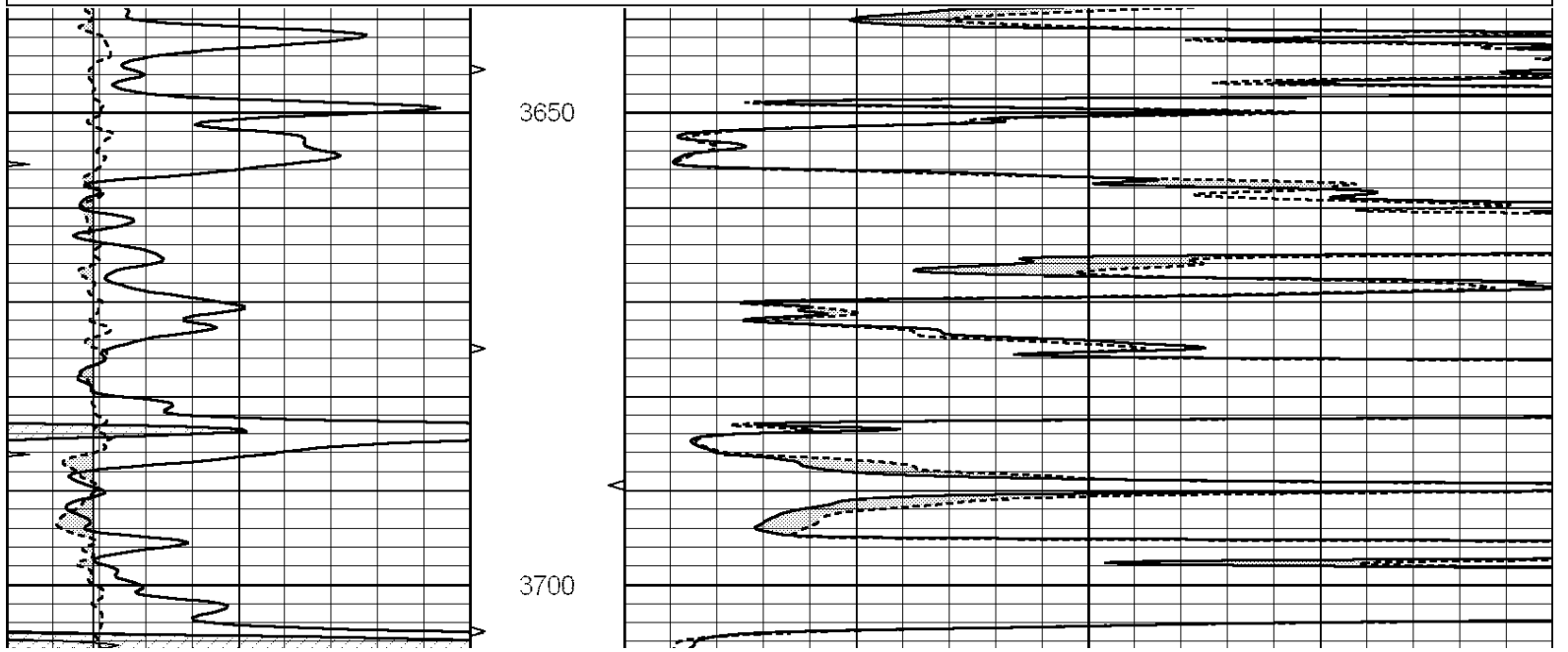


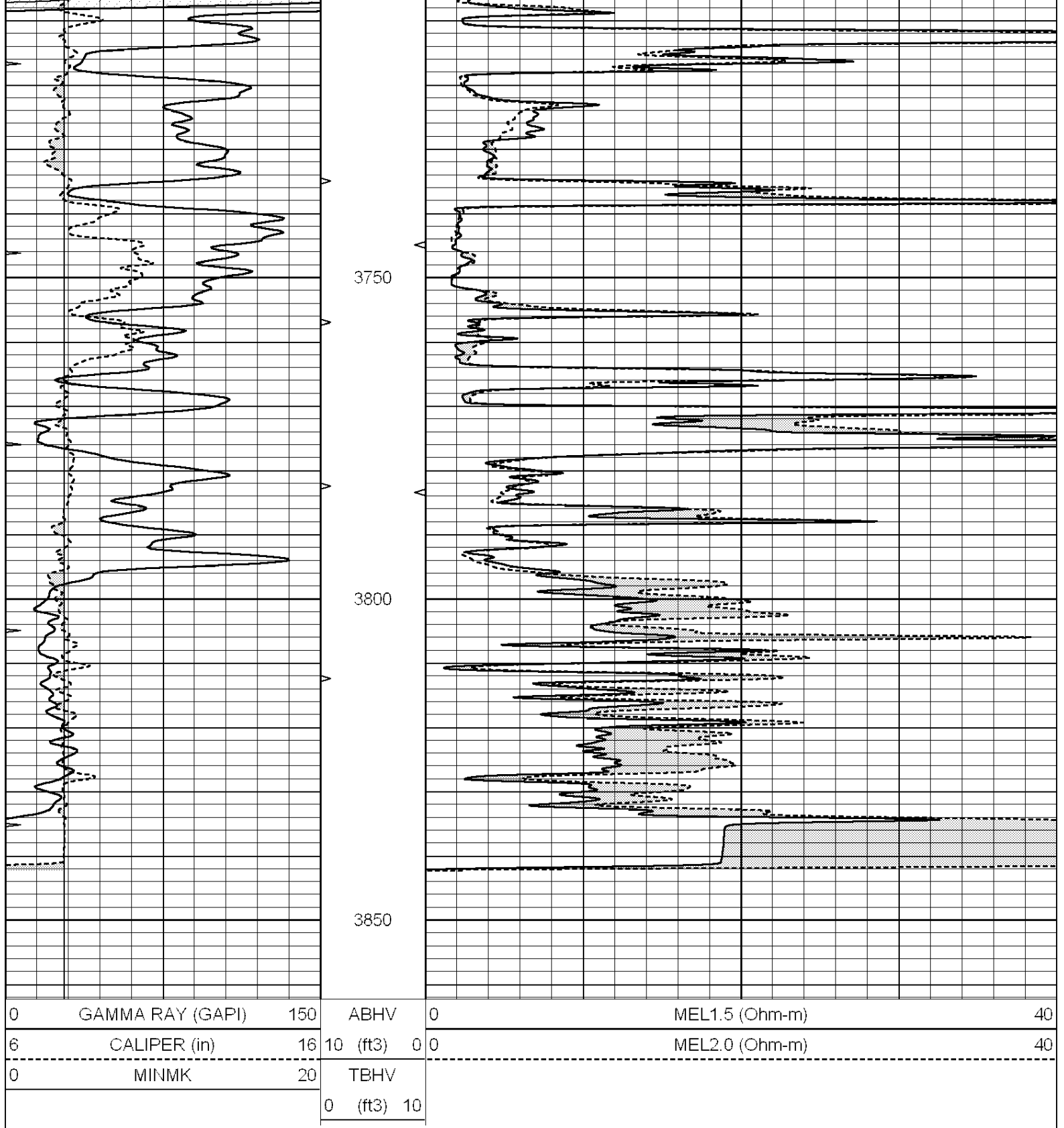
NABORS
**COMPLETION
 & PRODUCTION
 SERVICES CO.**

REPEAT SECTION

Database File: 010409pe.db
 Dataset Pathname: pass5.5
 Presentation Format: _micro
 Dataset Creation: Fri Feb 08 15:44:19 2013 by Calc SOC 120430
 Charted by: Depth in Feet scaled 1:240

0	GAMMA RAY (GAPI)	150	ABHV	0	MEL1.5 (Ohm-m)	40
6	CALIPER (in)	16	10 (ft3)	0	MEL2.0 (Ohm-m)	40
0	MINMK	20	TBHV			
			0 (ft3)	10		





Calibration Report

Database File: 010409pe.db
 Dataset Pathname: pass6.1
 Dataset Creation: Fri Feb 08 15:50:41 2013 by Calc SOC 120430

MICRO Calibration Report

Serial Number: MICRO5
 Tool Model: PROBE
 Performed: Thu Jan 31 03:56:49 2013

Caliper Calibration: Gain=3.640 Offset=-5.201

Sampler Calibration:	Gain=35.000	Offset=-1.000
References	Low Cal 8.000	High Cal 15.000
Readings	3.737	5.660

1.5" Calibration:	Gain=35.000	Offset=-1.000
References	Low Cal 0.000	High Cal 20.000
Readings	0.014	0.998

2" Calibration:	Gain=54.000	Offset=-1.500
References	Low Cal 0.000	High Cal 20.000
Readings	0.009	0.904

Gamma Ray Calibration Report

Serial Number:	GR4	
Tool Model:	OPEN	
Performed:	Thu Feb 07 11:48:16 2013	
Calibrator Value:	200.0	GAPI
Background Reading:	0.0	cps
Calibrator Reading:	189.0	cps
Sensitivity:	2.8000	GAPI/cps