



Pioneer Energy Services

# Microresistivity Log

15-023-21,361-00-00

API No.

Company **Berexco, LLC**

Well **Ivalee #1-16**

Field **Wildcat**

County **Cheyenne** State **Kansas**

Location **700' FSL & 630' FWL**

Sec: **16** Twp: **1S** Rge: **37W**

Other Services  
**RAG**

Elevation

K.B. 3196  
D.F. 3185  
G.L. 3185

Permanent Datum Ground Level Elevation 3185  
Log Measured From Kelly Bushing 11 Ft. Above Perm. Datum  
Drilling Measured From Kelly Bushing

Date **4/8/2013**

Run Number **Two**

Depth Driller **4730**

Depth Logger **4734**

Bottom Logged Interval **4733**

Top Log Interval **3500**

Casing Driller **8.625 @ 318**

Casing Logger **307**

Bit Size **7.875**

Type Fluid in Hole **Chemical**

Salinity, ppm CL **2400**

Density / Viscosity **9.6 50**

pH / Fluid Loss **9.5 8.6**

Source of Sample **Flowline**

Rm @ Meas. Temp **.55 @ 72**

Rmf @ Meas. Temp **.41 @ 72**

Rmc @ Meas. Temp **.74 @ 72**

Source of Rmf / Rmc **Charts**

Rm @ BHT **.32 @ 123**

Operating Rig Time **4 Hours**

Max Rec. Temp. F **123**

Equipment Number **108**

Location **Hays**

Recorded By **J. Long**

Witnessed By **Bryan Bynog**

<<< Fold Here >>>

All interpretations are opinions based on inferences from electrical or other measurements and we cannot and do not guarantee the accuracy or correctness of any interpretation, and we shall not, except in the case of gross or willful negligence on our part, be liable or responsible for any loss, costs, damages, or expenses incurred or sustained by anyone resulting from any interpretation made by any of our officers, agents or employees. These interpretations are also subject to our general terms and conditions set out in our current Price Schedule.

### Comments

Thank you for using Pioneer Energy Services  
www.pioneerres.com  
785 625 3858

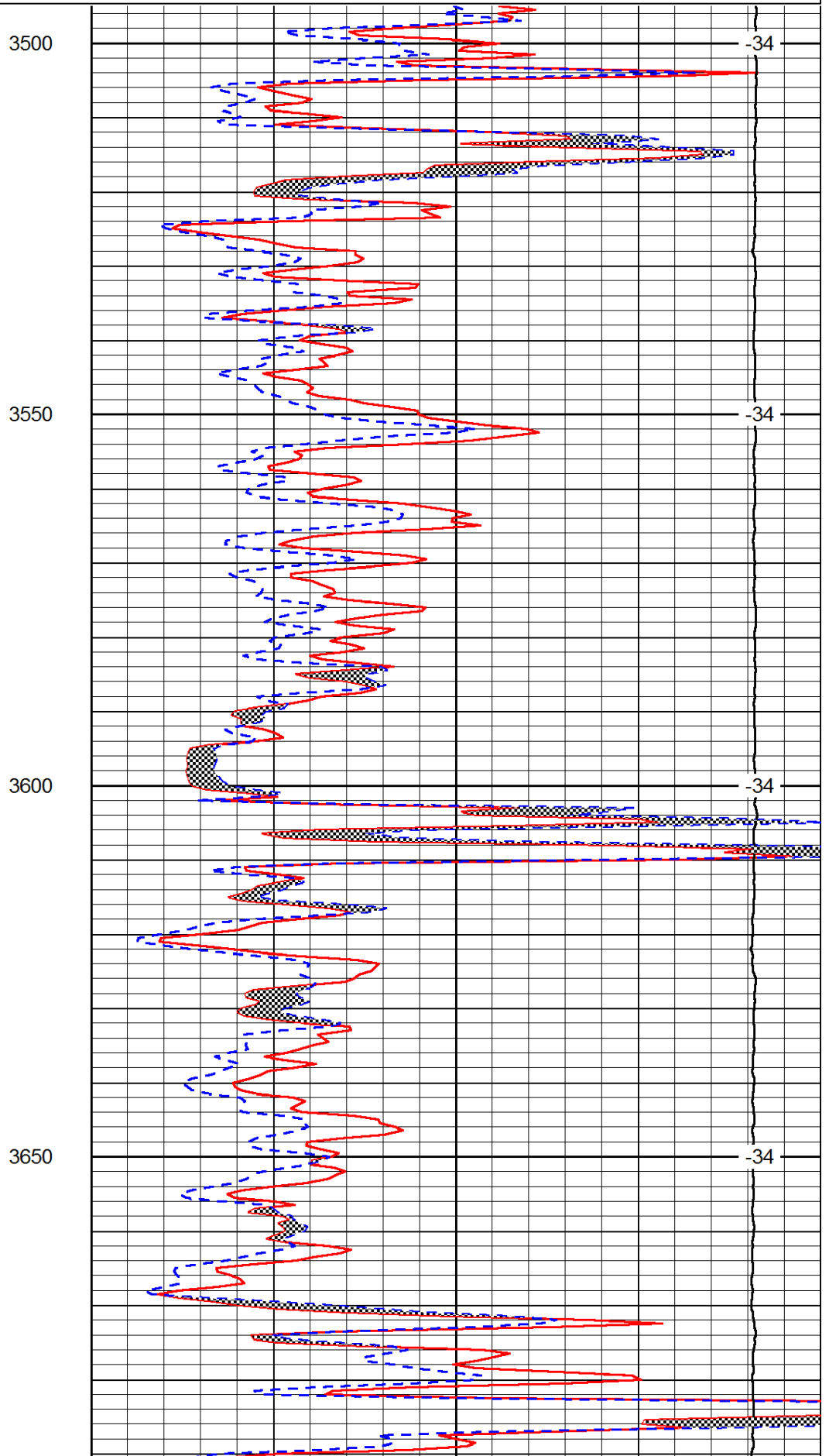
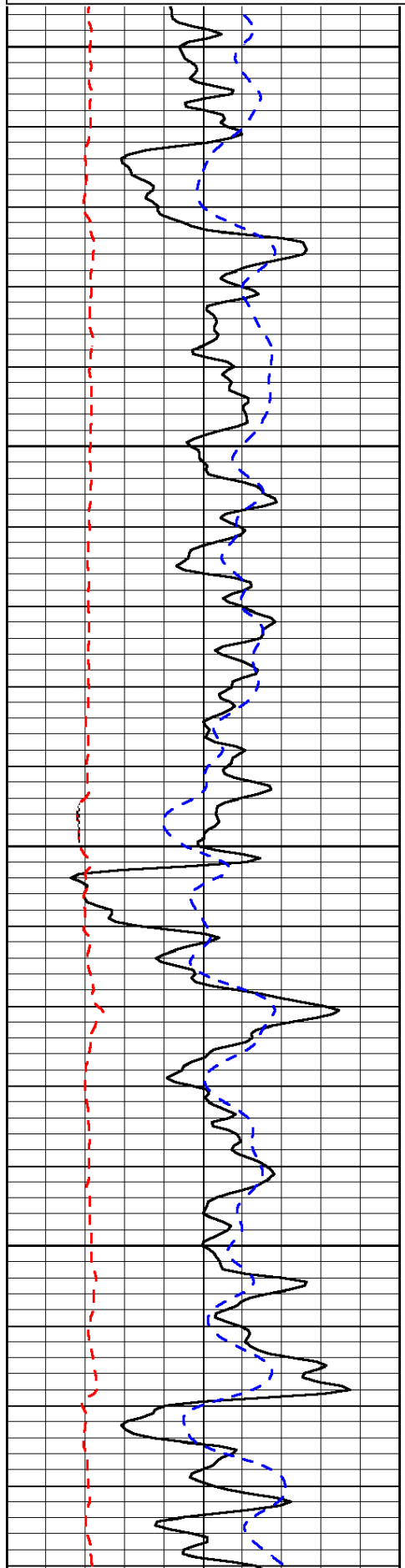
Bird City, 17 North to EE Road (State Line), 3 East to Fork, 3 3/4 South, West Into

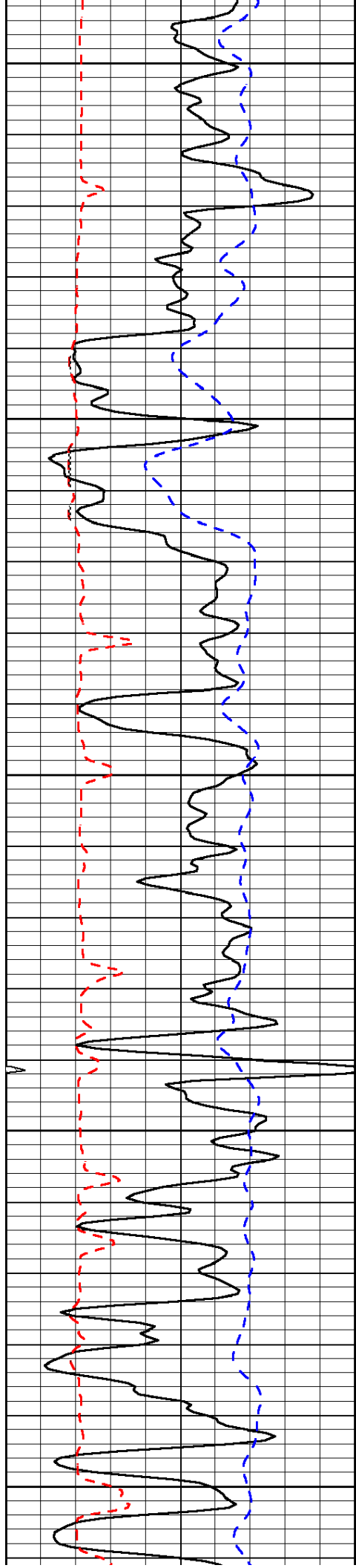
Database File: c:\warrior\data\berexco\_ivalee #1-16\berexco\_ivalee\_1-16hd.db  
Dataset Pathname: rag/berrag  
Presentation Format: micro  
Dataset Creation: Mon Apr 08 06:58:04 2013  
Charted by: Depth in Feet scaled 1:240

0	Gamma Ray	150
6	Micro Log Caliper (GAPI)	16
-200	SP (mV)	0

0	Micro Inverse 1 X 1	40
0	Micro Normal 2"	40
15000	Line Weight	0

LSPD





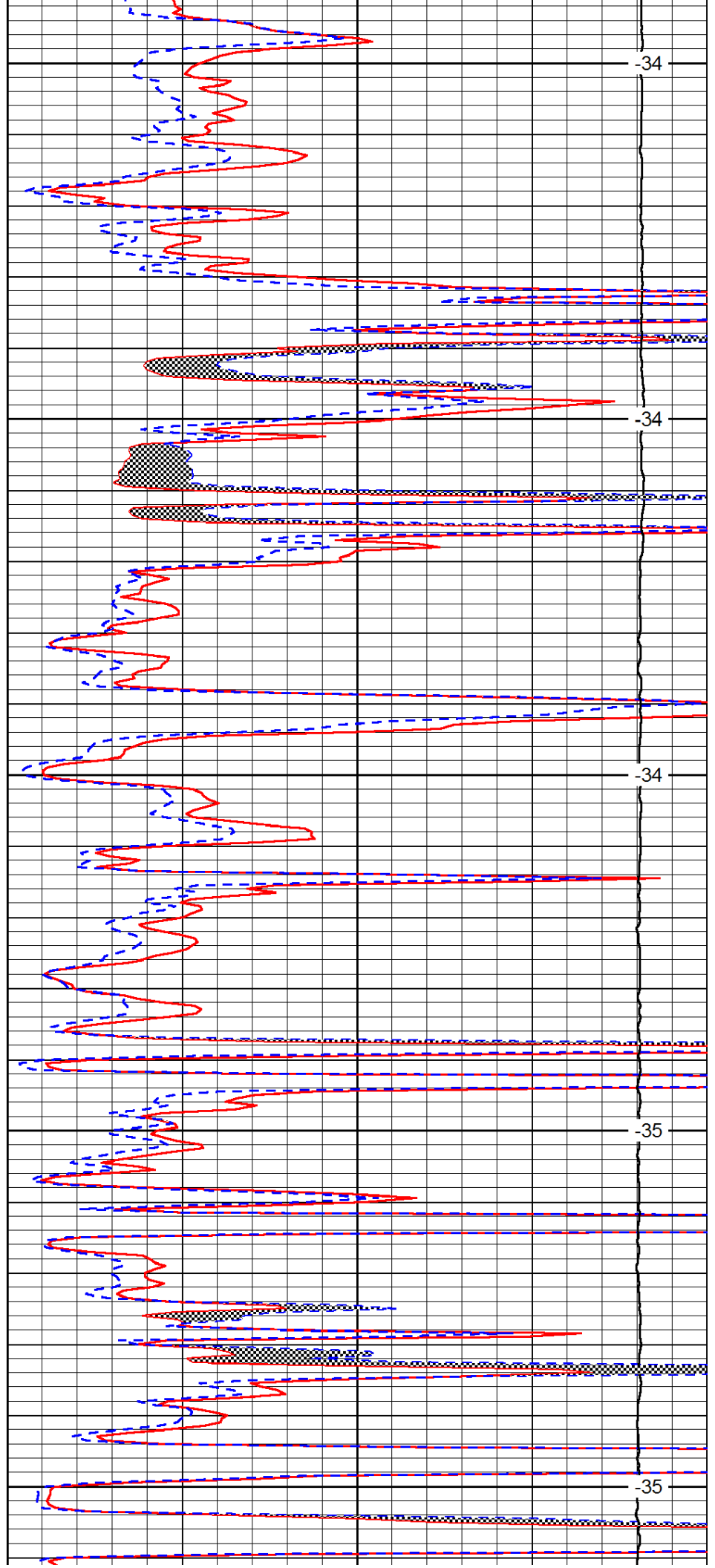
3700

3750

3800

3850

3900



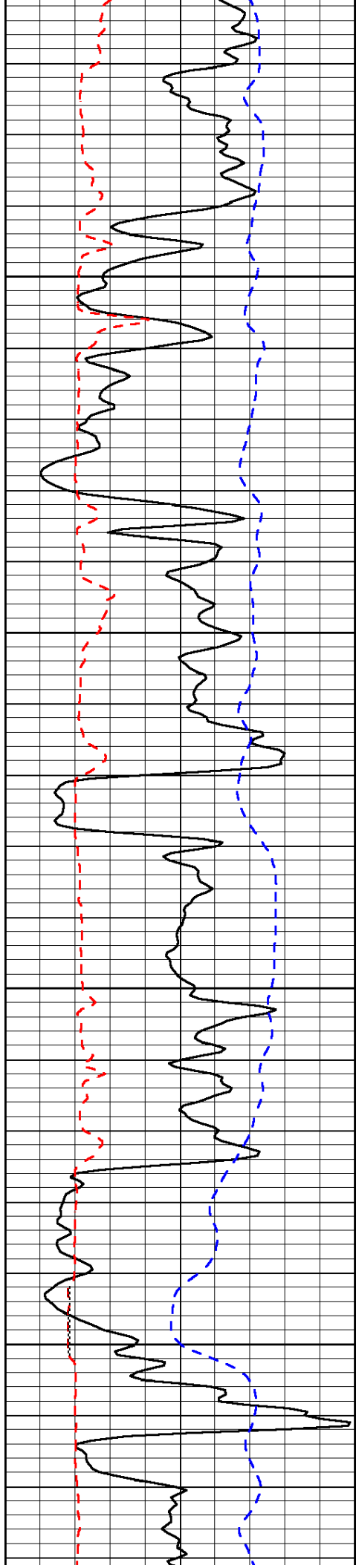
-34

-34

-34

-35

-35

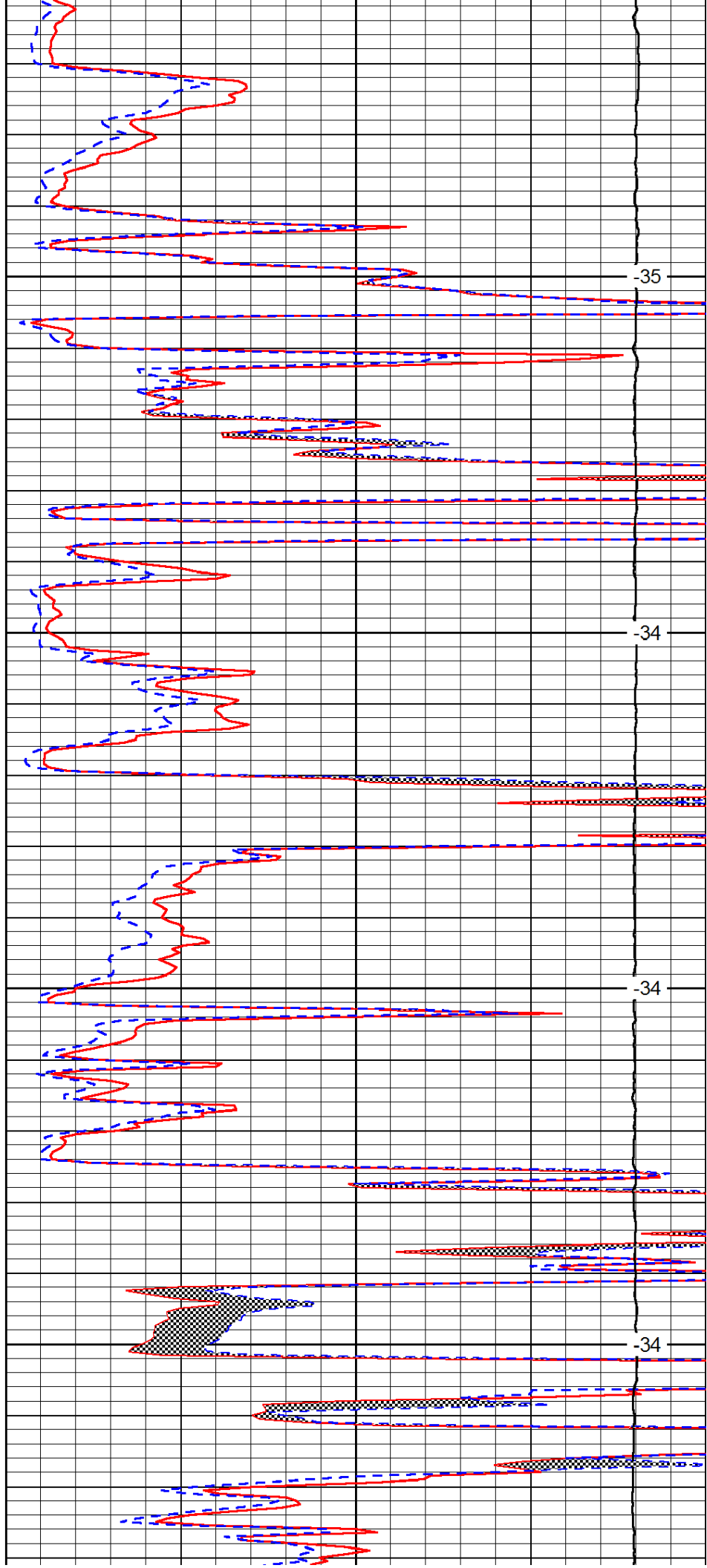


3950

4000

4050

4100

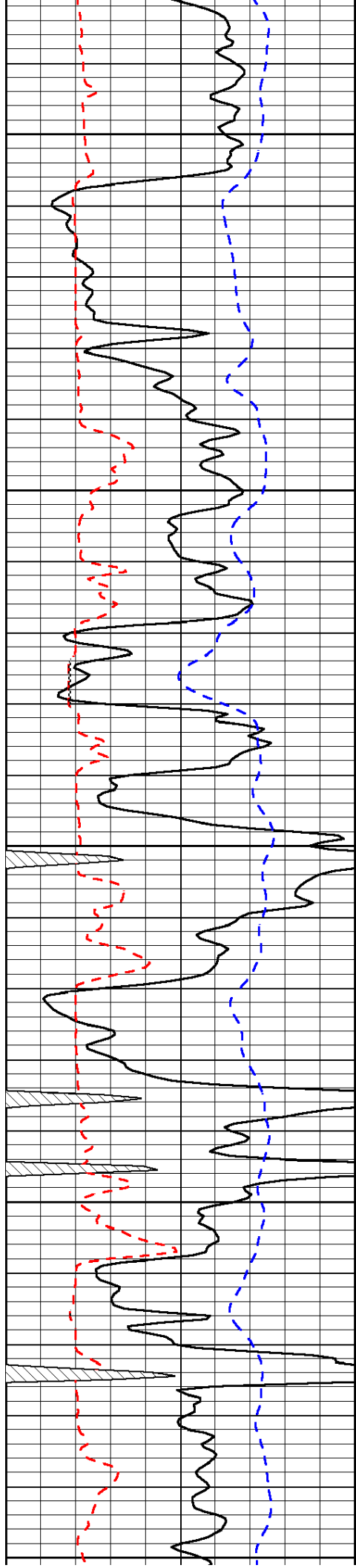


-35

-34

-34

-34



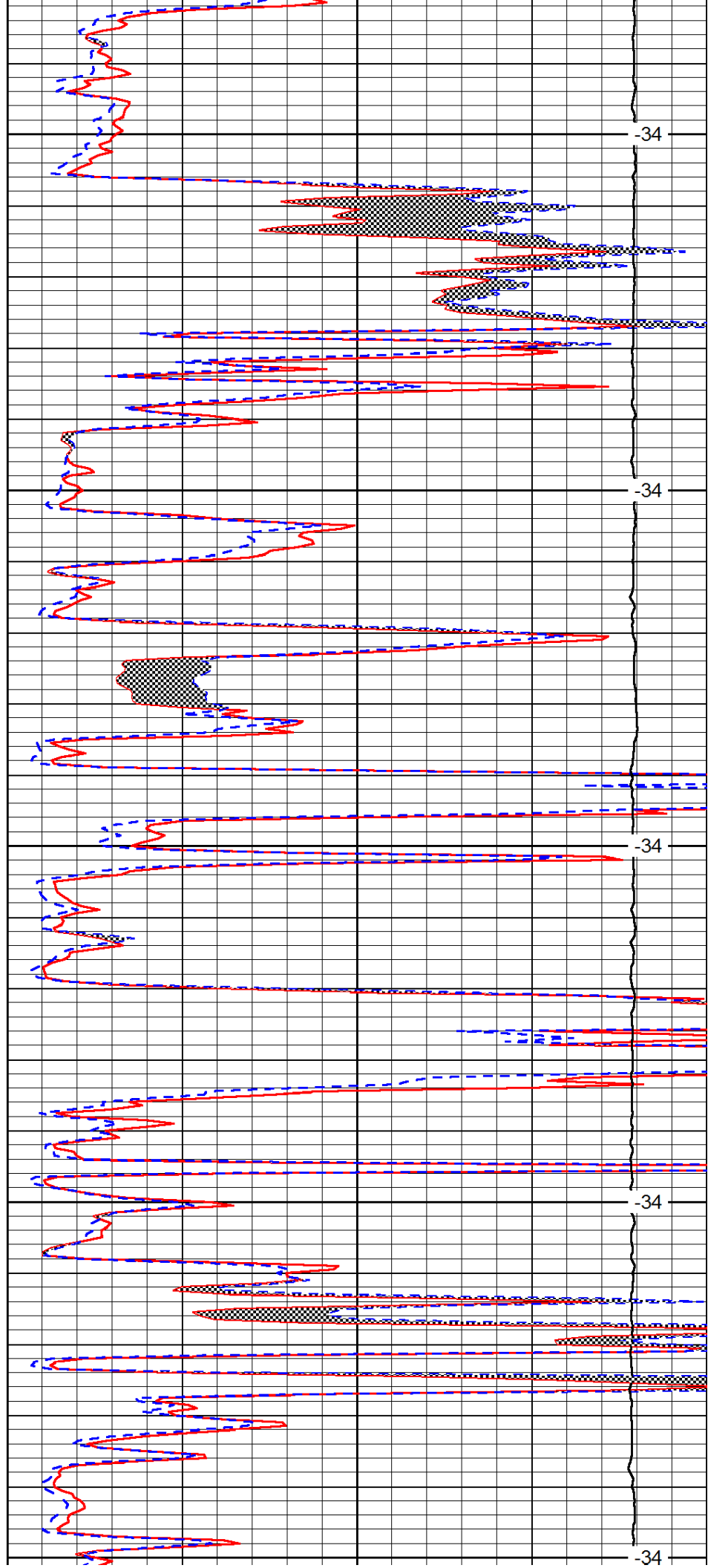
4150

4200

4250

4300

4350



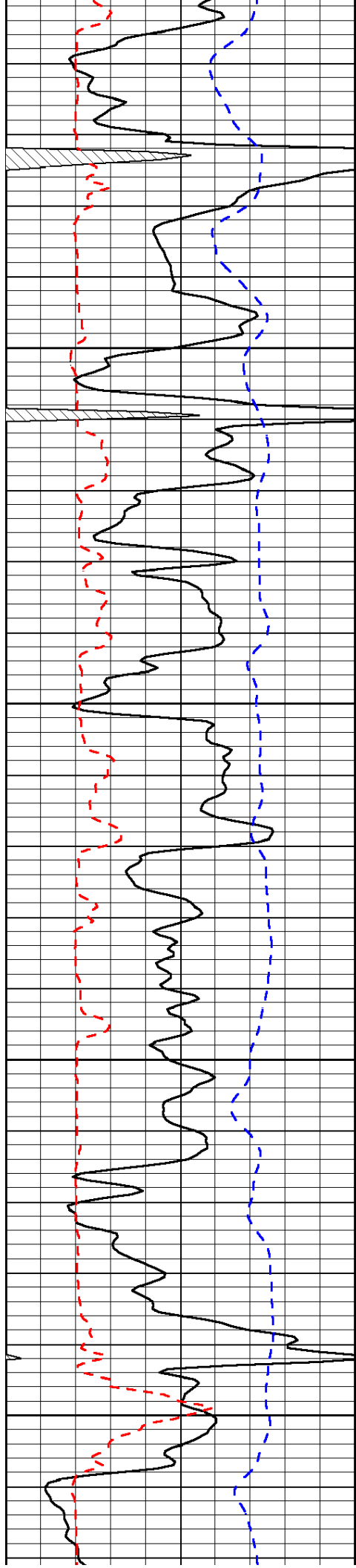
-34

-34

-34

-34

-34

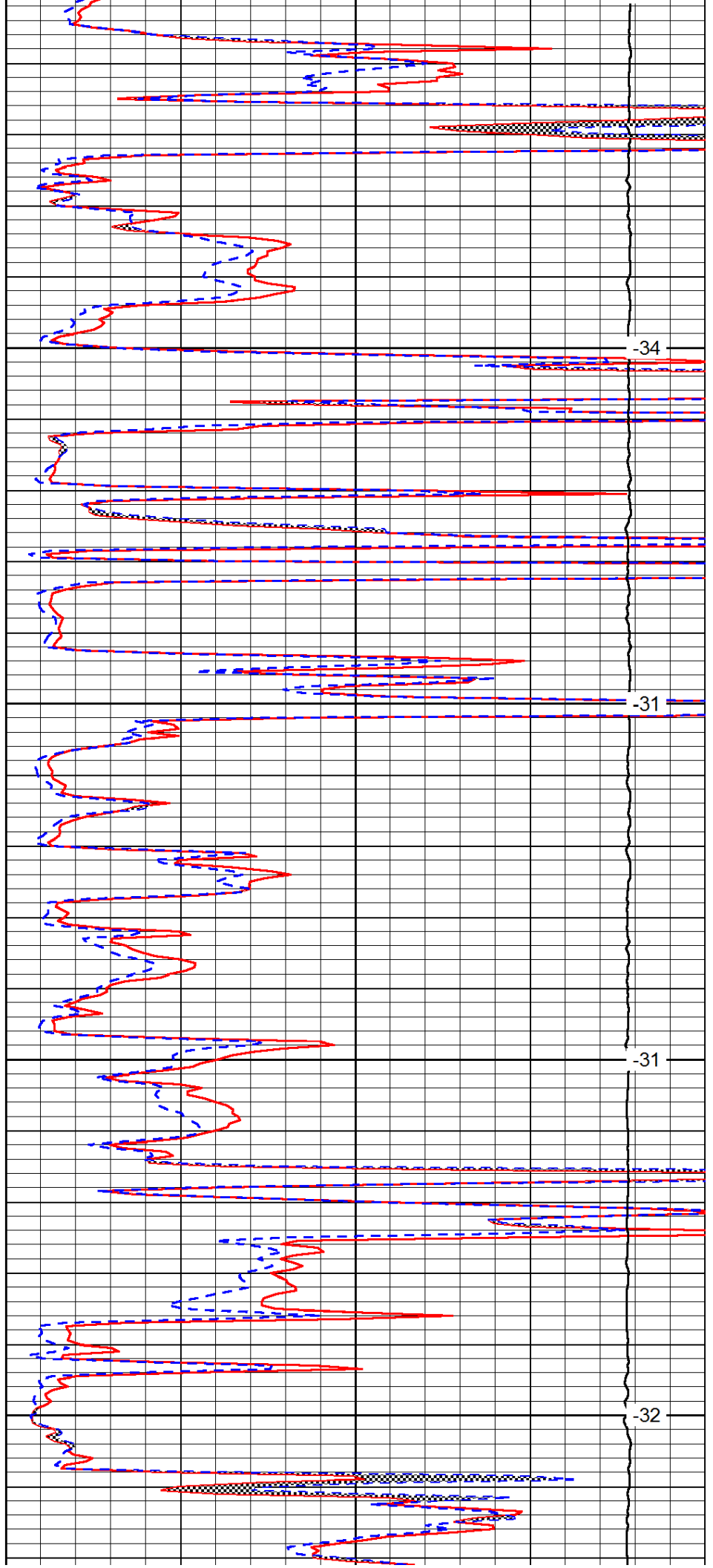


4400

4450

4500

4550

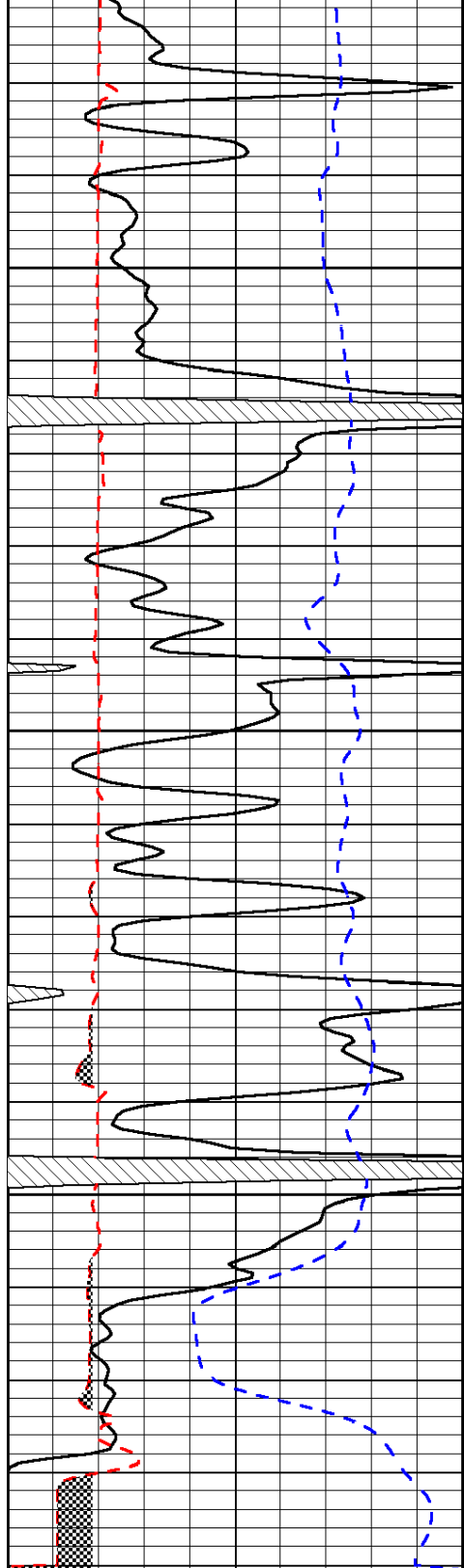


-34

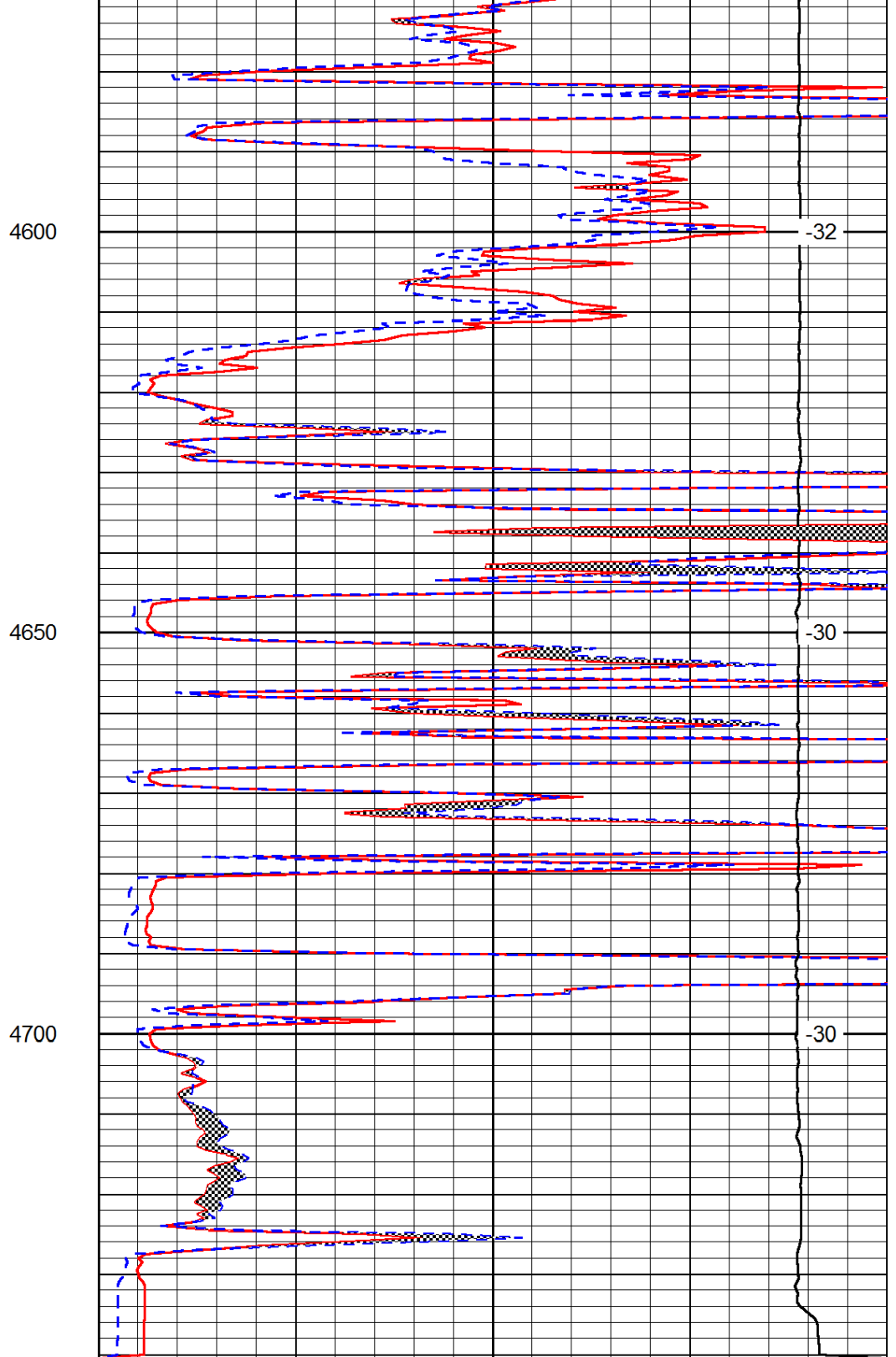
-31

-31

-32



0	Gamma Ray	150
6	Micro Log Caliper (GAPI)	16
-200	SP (mV)	0



0	Micro Inverse 1 X 1	40
0	Micro Normal 2''	40
15000	Line Weight	0

LSPD