



Pioneer Energy Services

Sonic Cement  
Bond Log

15-171-20916-00-00

Company Cholla Production LLC.  
Well Bontrager RT #1-32  
Field Gruben East  
County Scott State Kansas

Location

400' FNL & 2549' FEL

Other Services

Perorate

Sec: 32 Twp: 19S Rge: 33W

Elevation

K.B. 2991  
D.F. 2990  
G.L. 2986

Permanent Datum Ground Level Elevation 2986  
Log Measured From Kelly Bushing 5 Ft. Above Perm. Datum  
Drilling Measured From Kelly Bushing

|                           |              |      |
|---------------------------|--------------|------|
| Run Number                | One          |      |
| Date Survey               | 12/27/2012   |      |
| Date Cementing            | 11/26/2012   |      |
| Type Cementing Operation  | Primary      |      |
| Depth Driller             | 4790         |      |
| Depth Logger              | 4733         |      |
| Logged Interval           | 4731 to 3450 | to   |
| Casing Driller            | 5.5 @ T.D.   | @    |
| Float Collar -- D.V. Tool | ////         | 2186 |
| Squeeze Depth             | ////         |      |
| Amount & Type Cement      | ////         |      |
| Amount & Type Admix       | ////         |      |
| Type Fluid In Hole        | Water        |      |
| Fluid Level               | 350          |      |
| Salinity PPM CL           | ////         |      |
| Weight lb/gal -- Vis.     | ////         | //// |
| Approx. Logged Cement Top | 3610         |      |
| Calculated Cement Top     | ////         |      |
| Max. Hole Temperature     | 108          |      |
| Tool No.                  | D-1          |      |
| Spacing Recorded          | 3-5'         |      |
| Equipment -- Location     | 72 Hays      |      |
| Recorded By               | David Walker |      |
| Witnessed By              | John Mondero |      |

<<< Fold Here >>>

All interpretations are opinions based on inferences from electrical or other measurements and we cannot and do not guarantee the accuracy or correctness of any interpretation, and we shall not, except in the case of gross or willful negligence on our part, be liable or responsible for any loss, costs, damages, or expenses incurred or sustained by anyone resulting from any interpretation made by any of our officers, agents or employees. These interpretations are also subject to our general terms and conditions set out in our current Price Schedule.

Comments

Thank you for using Pioneer Energy Services, Inc. 785.625.3858

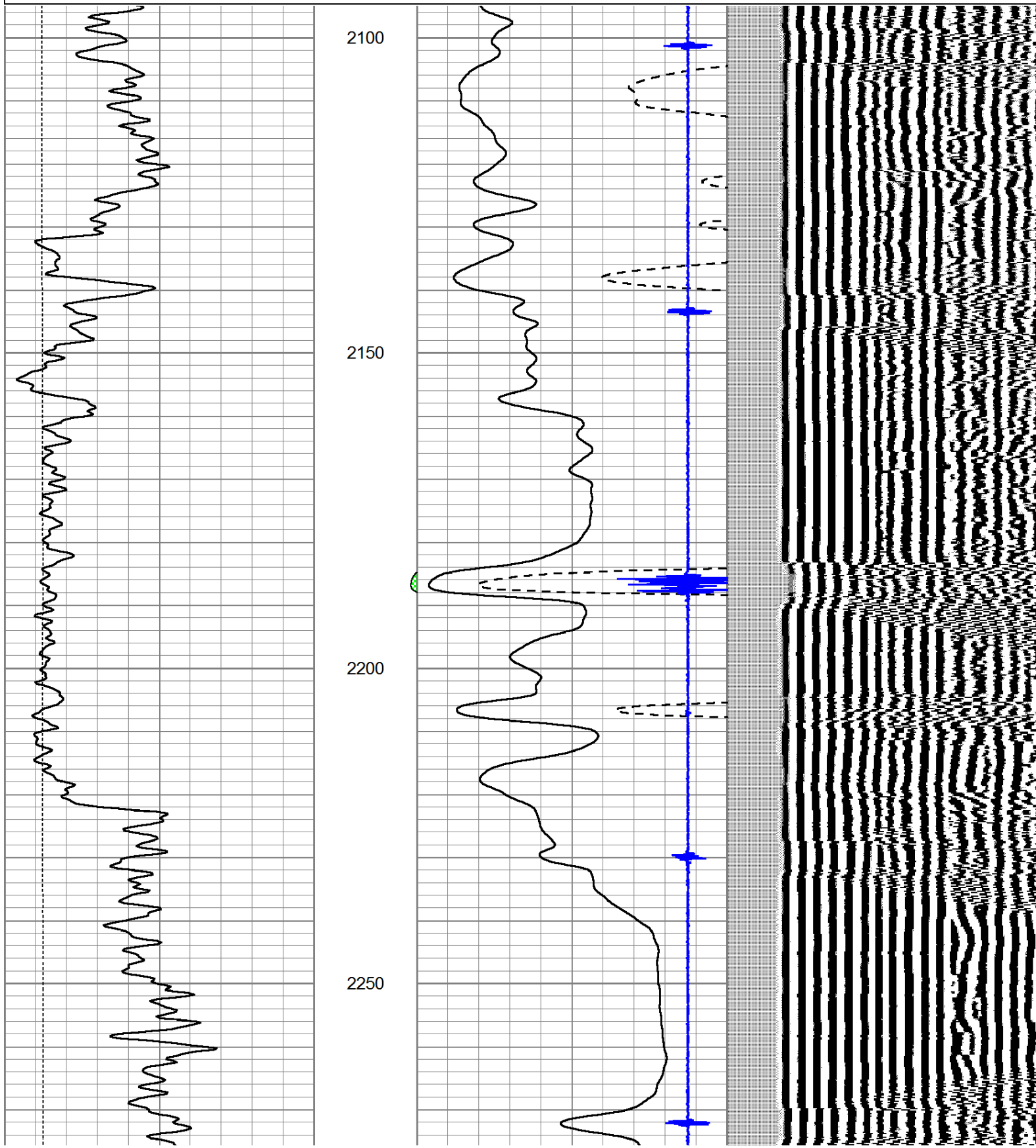
Scott City  
8 South to Rd. 70  
4 1/2 West, South Into



D.V. Tool @ 2186

Database File: cholla\_bontrager\_1-32.db  
 Dataset Pathname: pass4  
 Presentation Format: cbldig  
 Dataset Creation: Thu Dec 27 10:33:20 2012 by Log SCH 111116  
 Charted by: Depth in Feet scaled 1:240

|   |           |      |         |   |                          |     |     |                  |      |
|---|-----------|------|---------|---|--------------------------|-----|-----|------------------|------|
| 0 | GR (GAPI) | 150  | AMP3    | 0 | Amplitude (mV)           | 100 | 200 | Variable Density | 1200 |
| 0 | LTEN (lb) | 5000 | (mV)    | 0 | Amplified Amplitude (mV) | 20  |     |                  |      |
|   |           |      | -100 10 | 7 | Collar Locator           | -1  |     |                  |      |



|   |           |      |         |   |                          |     |     |                  |      |
|---|-----------|------|---------|---|--------------------------|-----|-----|------------------|------|
| 0 | GR (GAPI) | 150  | AMP3    | 0 | Amplitude (mV)           | 100 | 200 | Variable Density | 1200 |
| 0 | LTEN (lb) | 5000 | (mV)    | 0 | Amplified Amplitude (mV) | 20  |     |                  |      |
|   |           |      | -100 10 | 7 | Collar Locator           | -1  |     |                  |      |

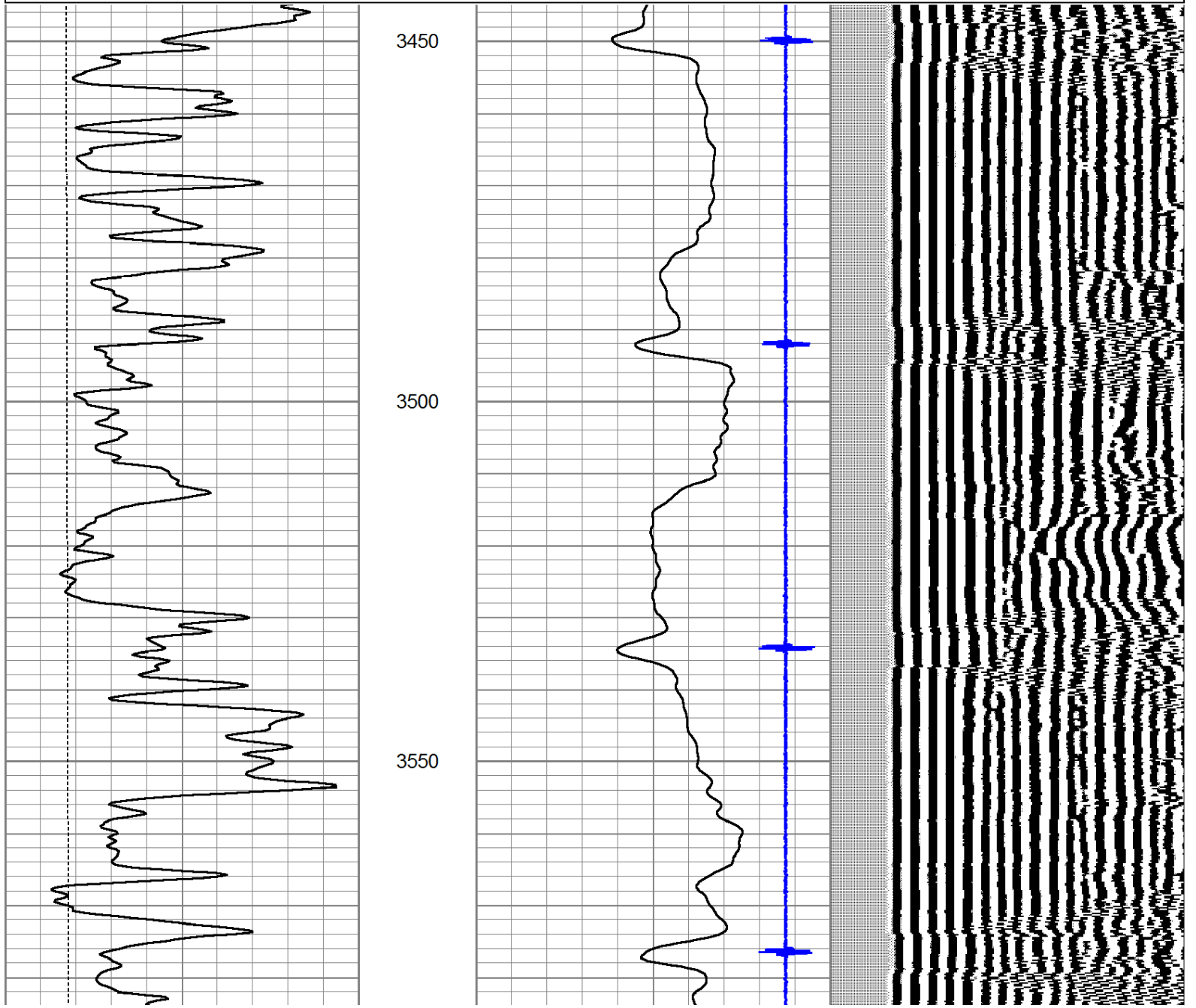


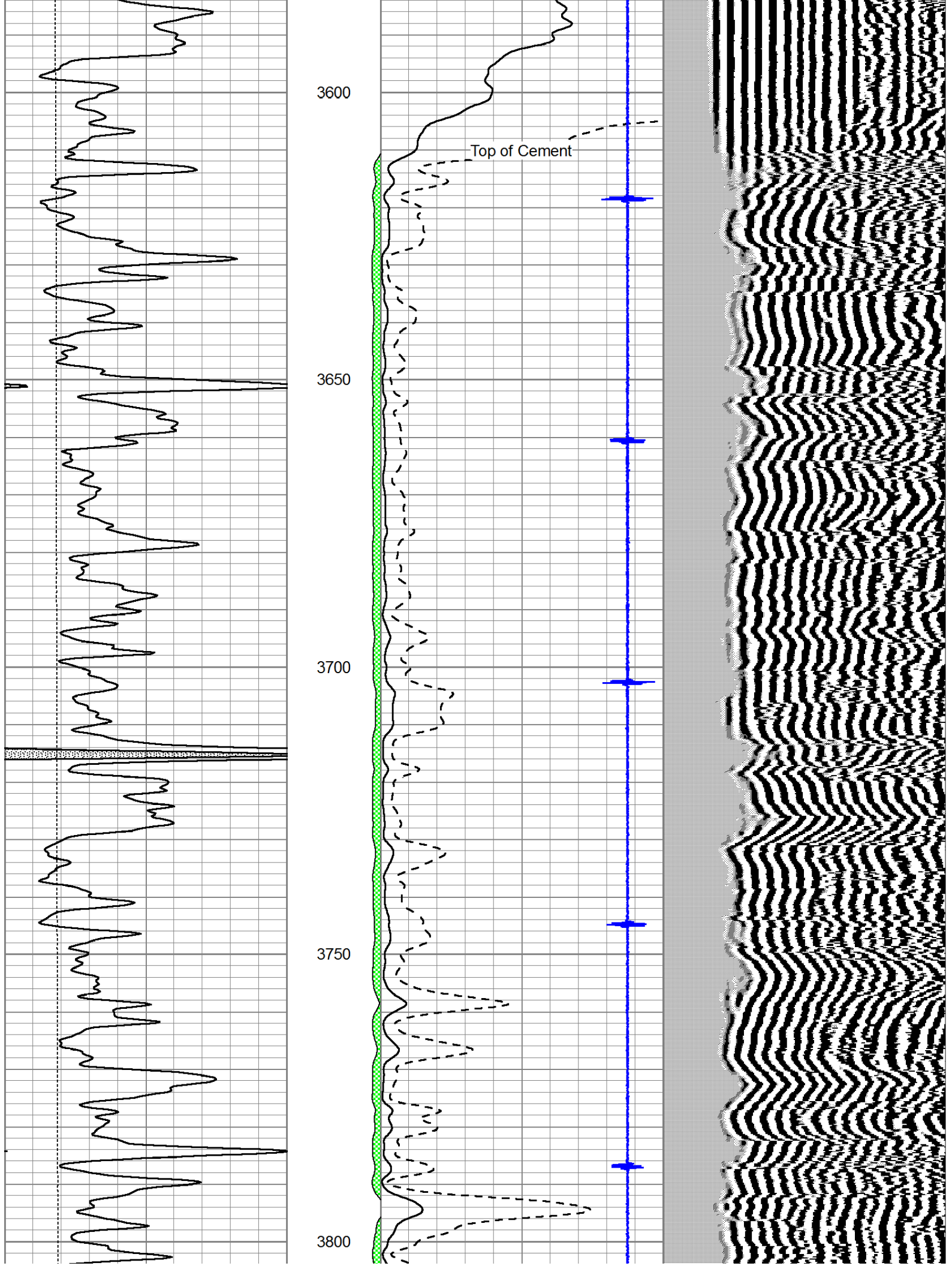
# Main Pass

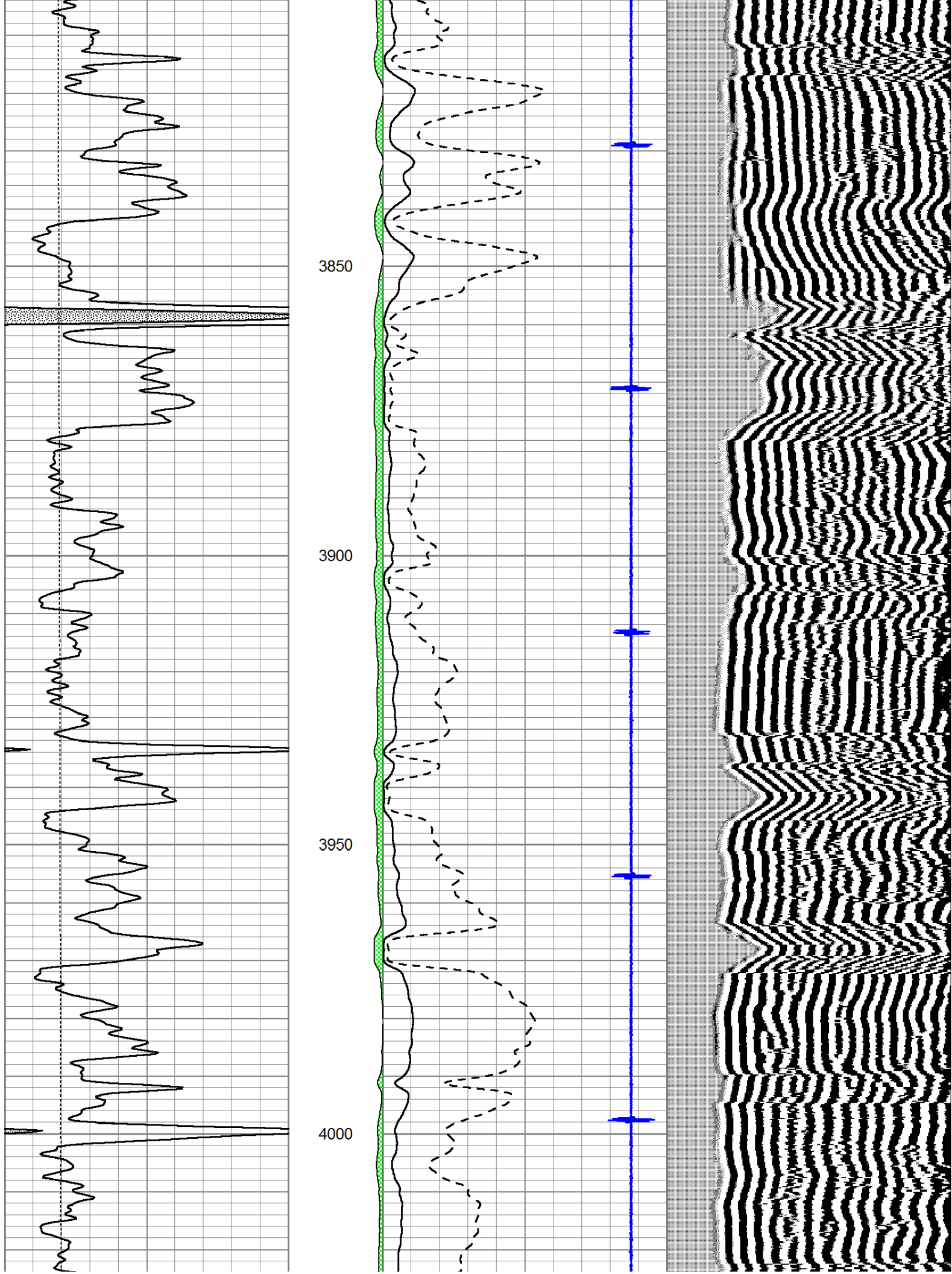
Pioneer Energy Services

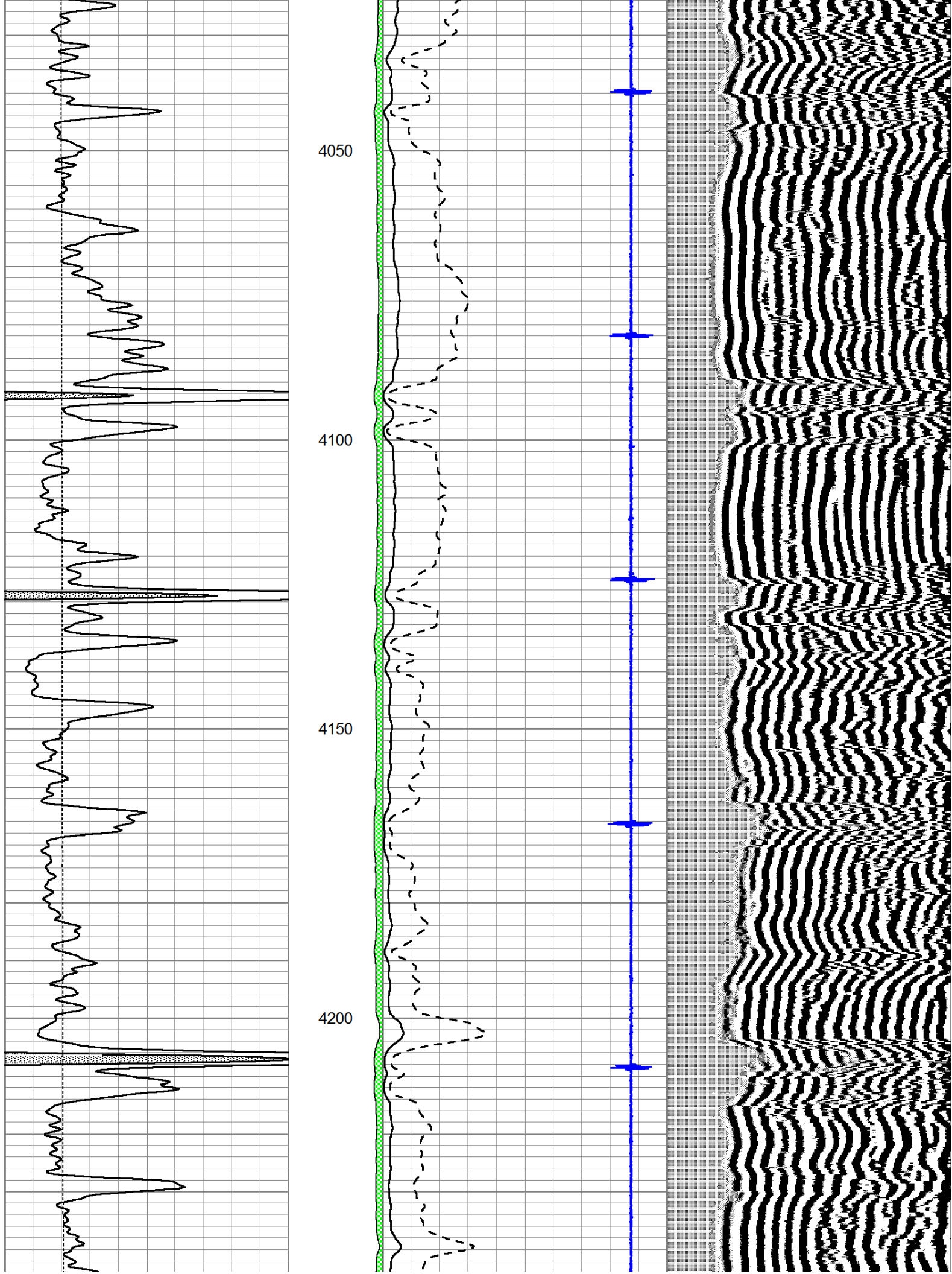
Database File: cholla\_bontrager\_1-32.db  
 Dataset Pathname: pass3  
 Presentation Format: cldig  
 Dataset Creation: Thu Dec 27 10:03:24 2012 by Log SCH 111116  
 Charted by: Depth in Feet scaled 1:240

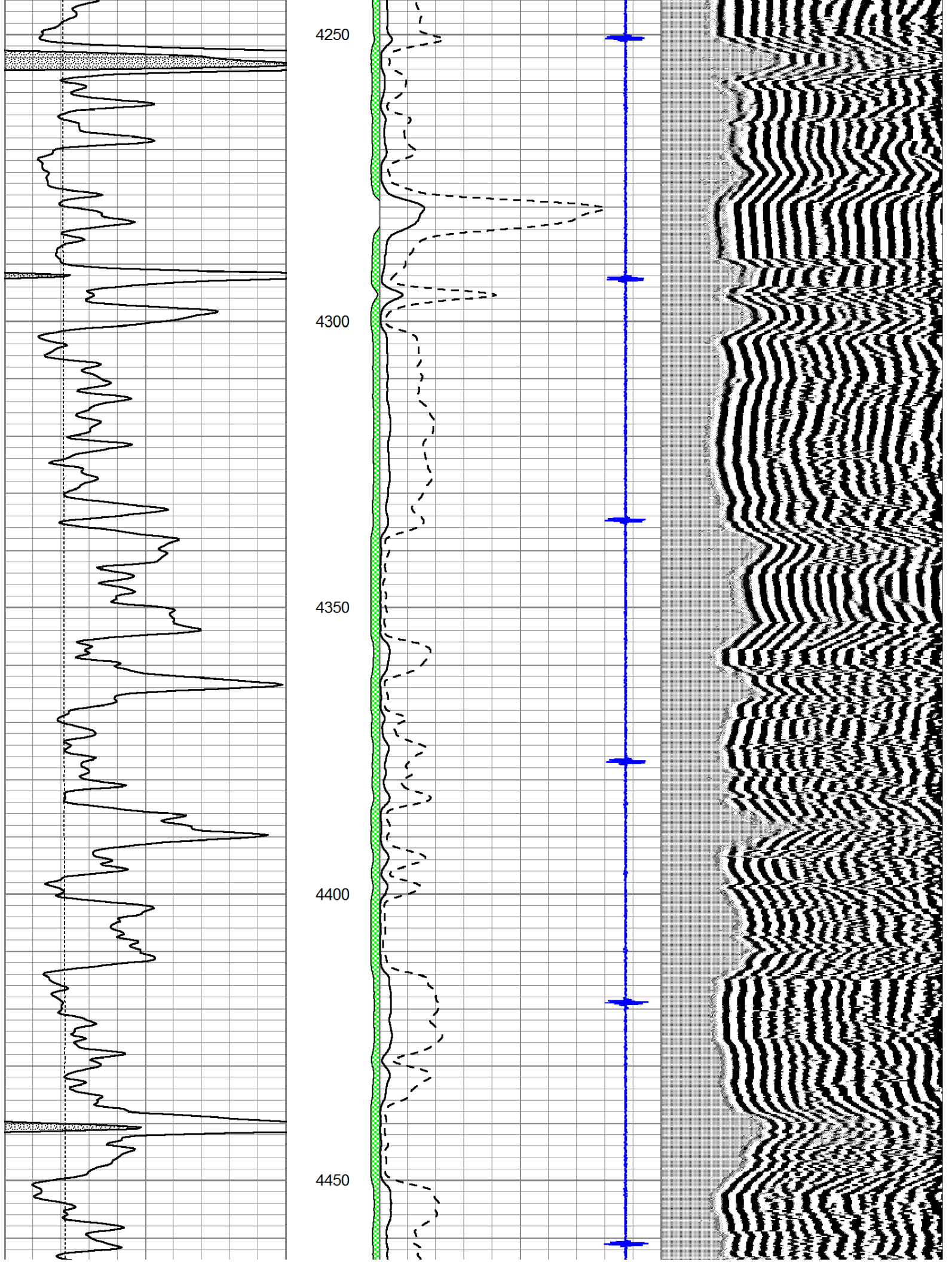
|   |           |      |         |   |                          |     |     |                  |      |
|---|-----------|------|---------|---|--------------------------|-----|-----|------------------|------|
| 0 | GR (GAPI) | 150  | AMP3    | 0 | Amplitude (mV)           | 100 | 200 | Variable Density | 1200 |
| 0 | LTEN (lb) | 5000 | (mV)    | 0 | Amplified Amplitude (mV) | 20  |     |                  |      |
|   |           |      | -100 10 | 7 | Collar Locator           | -1  |     |                  |      |

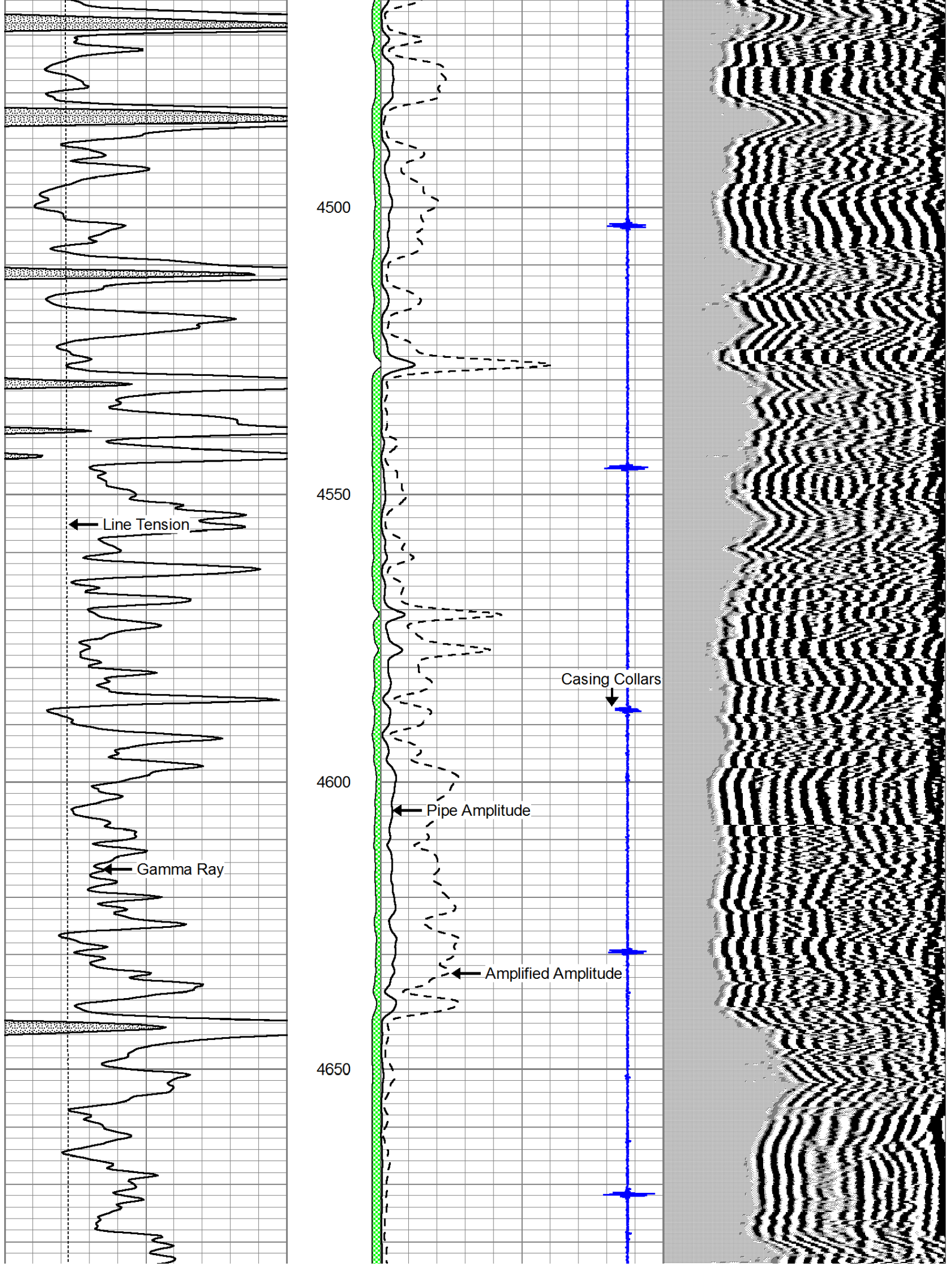


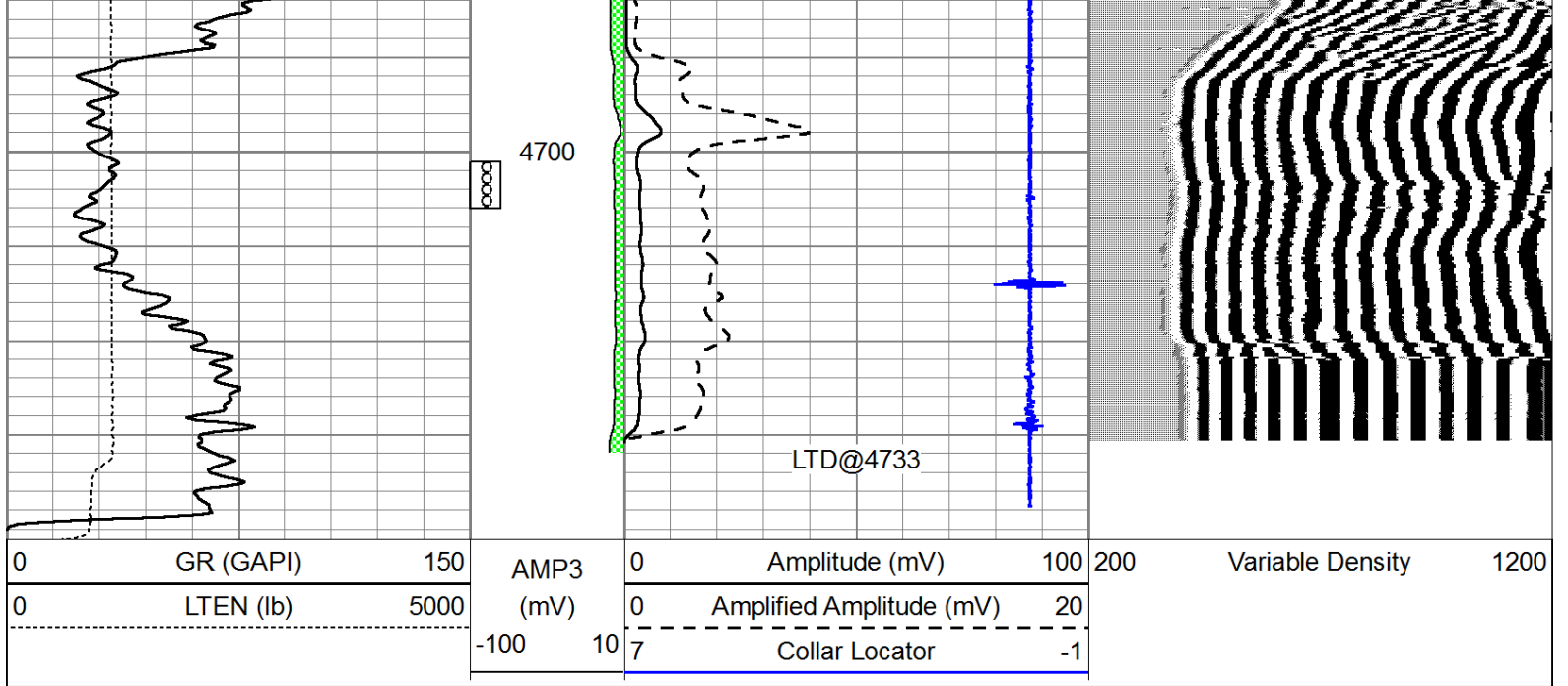












Pioneer Energy Services

# Repeat Section

Database File: cholla\_bontrager\_1-32.db  
 Dataset Pathname: pass2  
 Presentation Format: cldig  
 Dataset Creation: Thu Dec 27 09:57:32 2012 by Log SCH 111116  
 Charted by: Depth in Feet scaled 1:240

