



Pioneer Energy Services

Dual Induction Log

15-192-20,881-00-00

API No.

Company **Forestar Petroleum Corporation**
 Well **Medford Farms No. 1-15**
 Field **Medford**
 County **Thomas** State **Kansas**

Location **2,310' FNL & 330' FWL**

Sec: **15** Twp: **10S** Rge: **35W**

Permanent Datum **Ground Level** Elevation **3313**
 Log Measured From **Kelly Bushing** **5** Ft. Above Perm. Datum
 Drilling Measured From **Kelly Bushing**

Other Services
 CNL/CDL
 Elevation
 K.B. 3318
 D.F.
 G.L. 3313

Date	2/20/2013
Run Number	One
Depth Driller	4940
Depth Logger	4942
Bottom Logged Interval	4941
Top Log Interval	250
Casing Driller	8.625 @ 259
Casing Logger	258
Bit Size	7.875
Type Fluid in Hole	Chemical
Salinity, ppm CL	7000
Density / Viscosity	9.2 48
pH / Fluid Loss	10.0 8.0
Source of Sample	Flowline
Rm @ Meas. Temp	.40 @ 70
Rmf @ Meas. Temp	.30 @ 70
Rmc @ Meas. Temp	.54 @ 70
Source of Rmf / Rmc	Charts
Rm @ BHT	.22 @ 125
Operating Rig Time	4 Hours
Max Rec. Temp. F	125
Equipment Number	108
Location	Hays
Recorded By	J. Long
Witnessed By	Charles Sturdavant

<<< Fold Here >>>

All interpretations are opinions based on inferences from electrical or other measurements and we cannot and do not guarantee the accuracy or correctness of any interpretation, and we shall not, except in the case of gross or willful negligence on our part, be liable or responsible for any loss, costs, damages, or expenses incurred or sustained by anyone resulting from any interpretation made by any of our officers, agents or employees. These interpretations are also subject to our general terms and conditions set out in our current Price Schedule.

Comments

Thank you for using Pioneer Energy Services
www.pioneerenergy.com
 785 625 3858

Levant exit on I-70, 11 South to F Road, 1 West, 1 1/2 South, East Into

Database File: c:\warrior\data\forestore_medford farms #1-15\forestar_medfordfarms_1-15hd.db
 Dataset Pathname: dil/@00000e60
 Presentation Format: dil2in
 Dataset Creation: Wed Feb 20 21:24:24 2013
 Charted by: Depth in Feet scaled 1:600

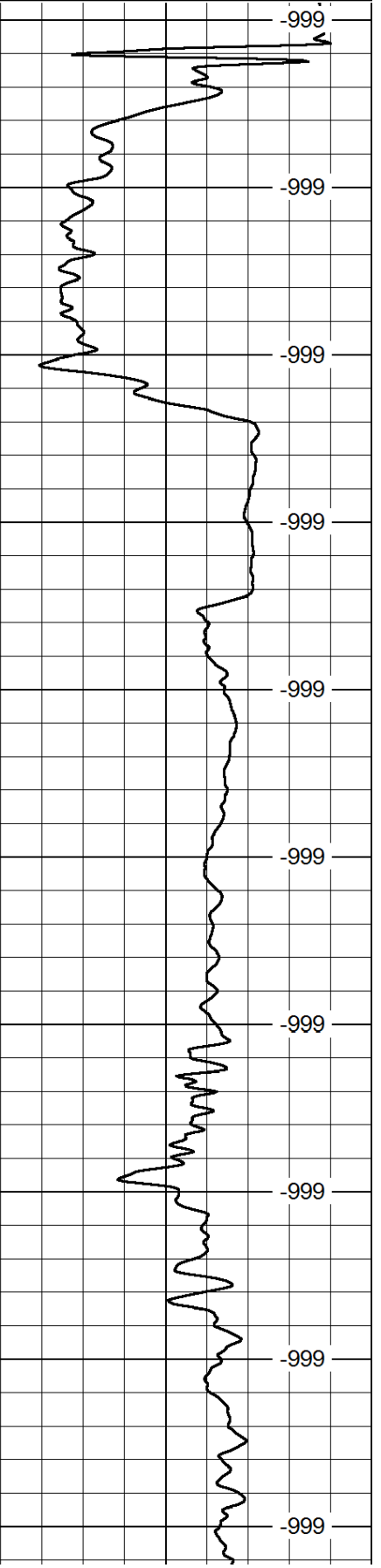
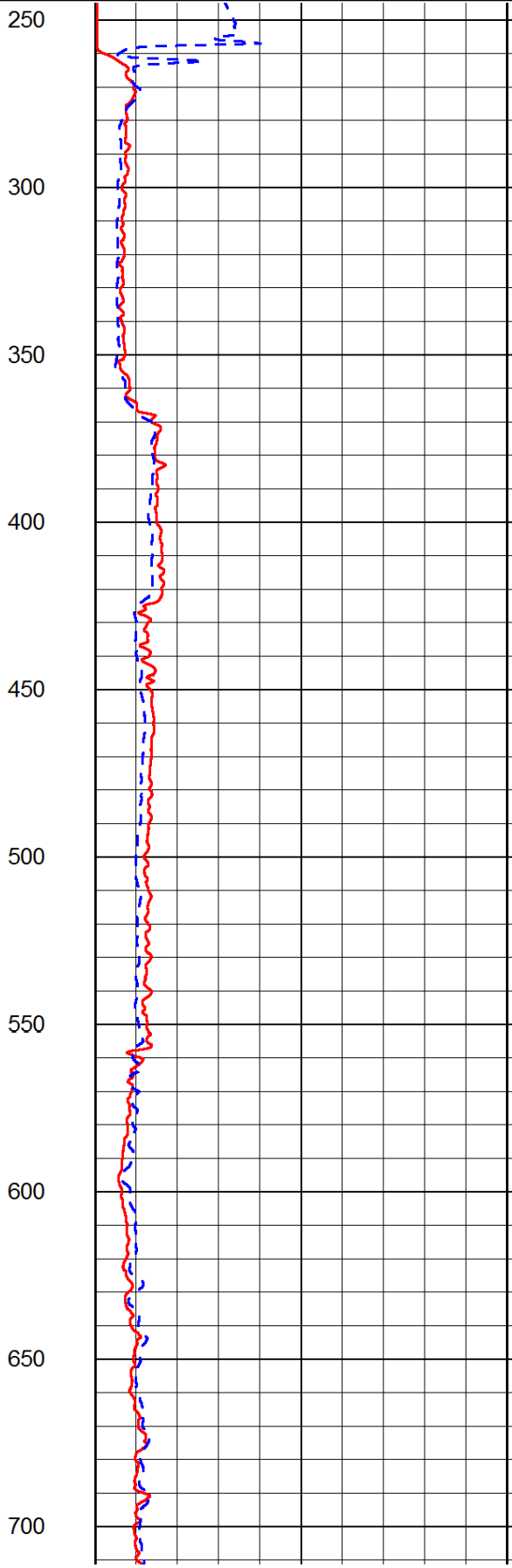
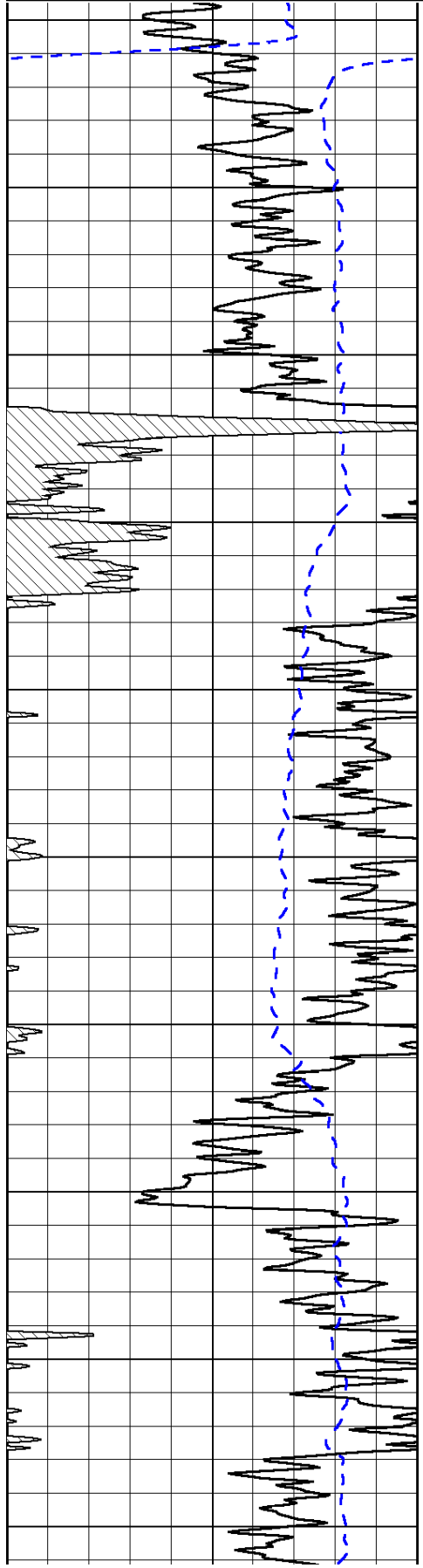
0	Gamma Ray	150
-200	SP (mV)	0

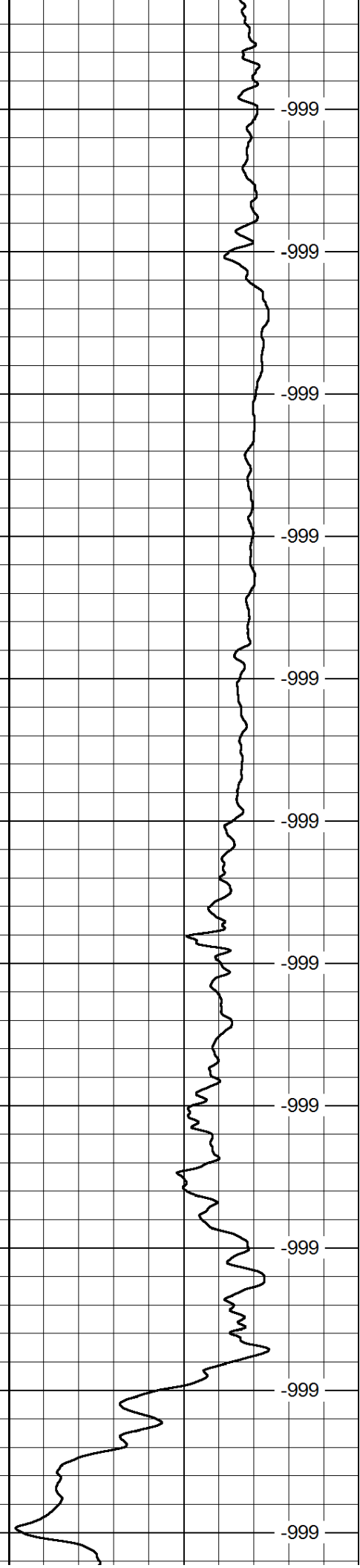
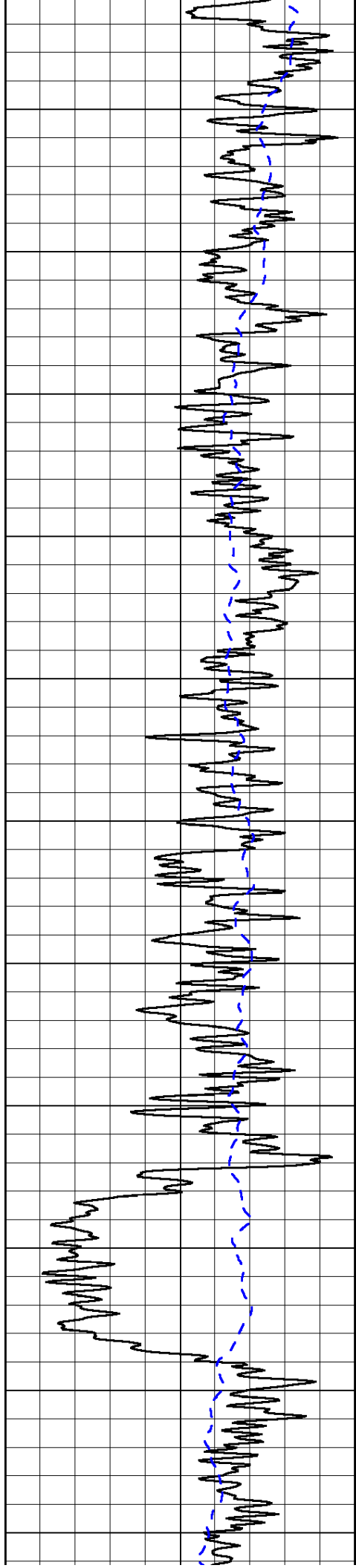
0	Shallow Resistivity	50
0	Deep Resistivity	50

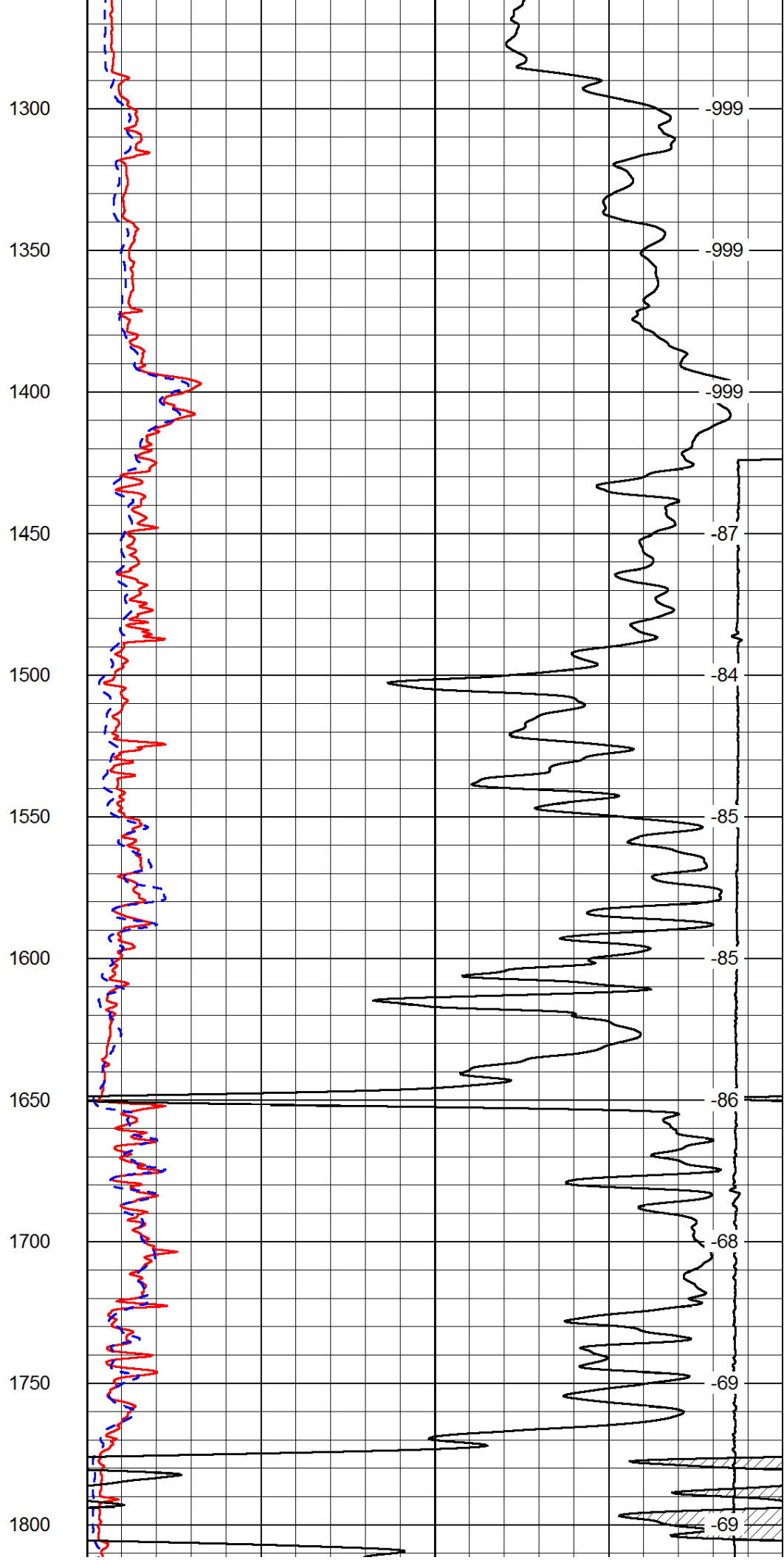
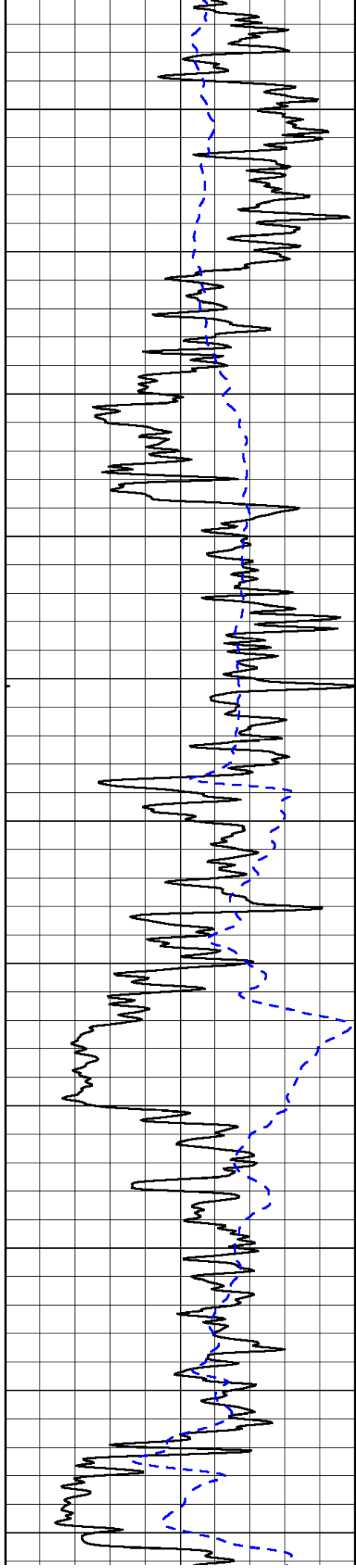
LSPD

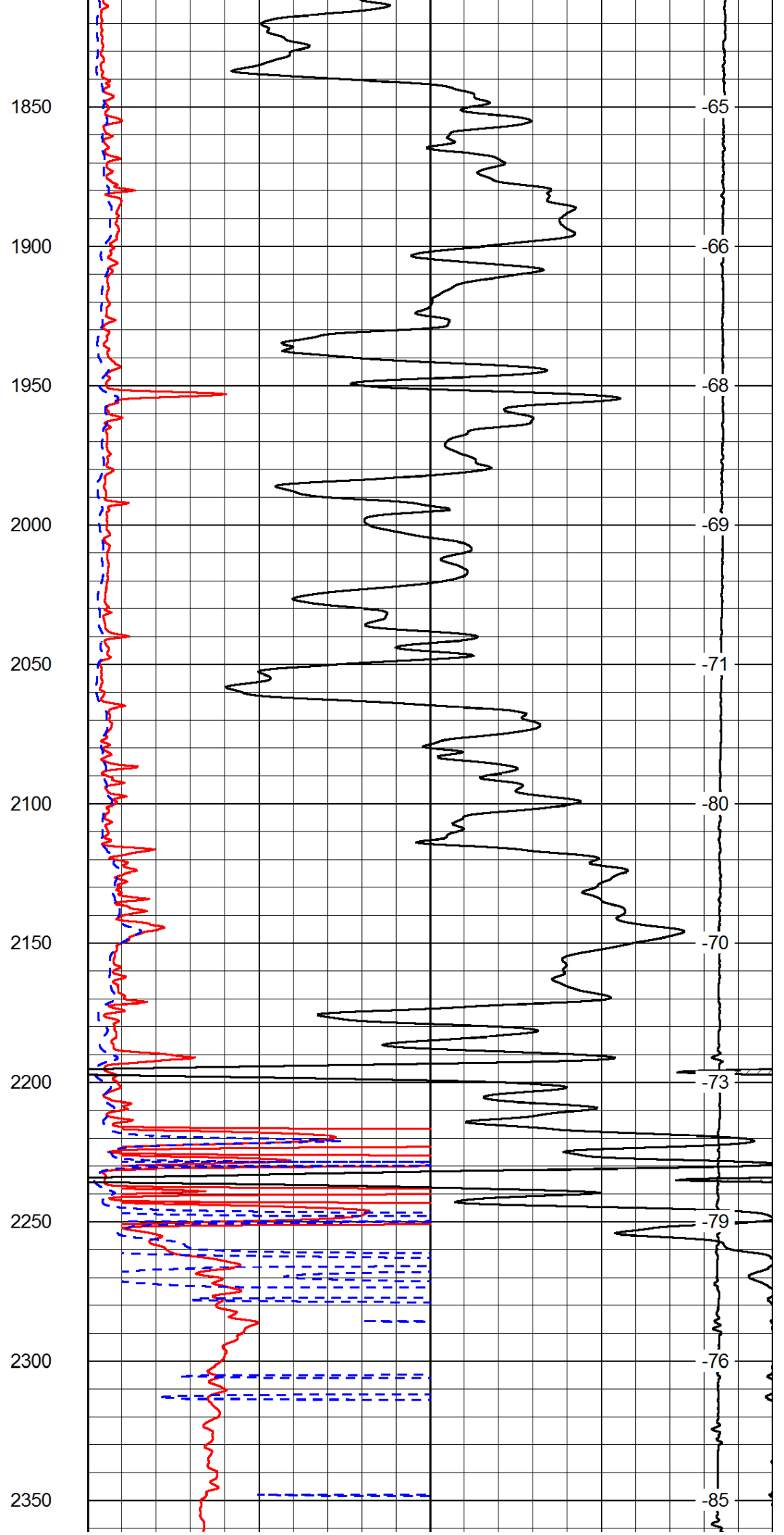
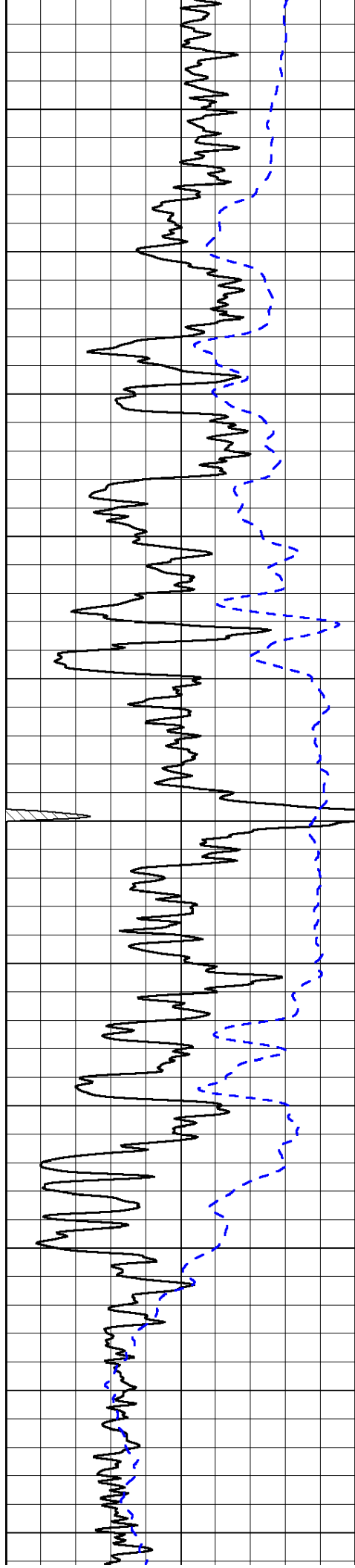
1000	Conductivity	0
15000	Line Tension	0

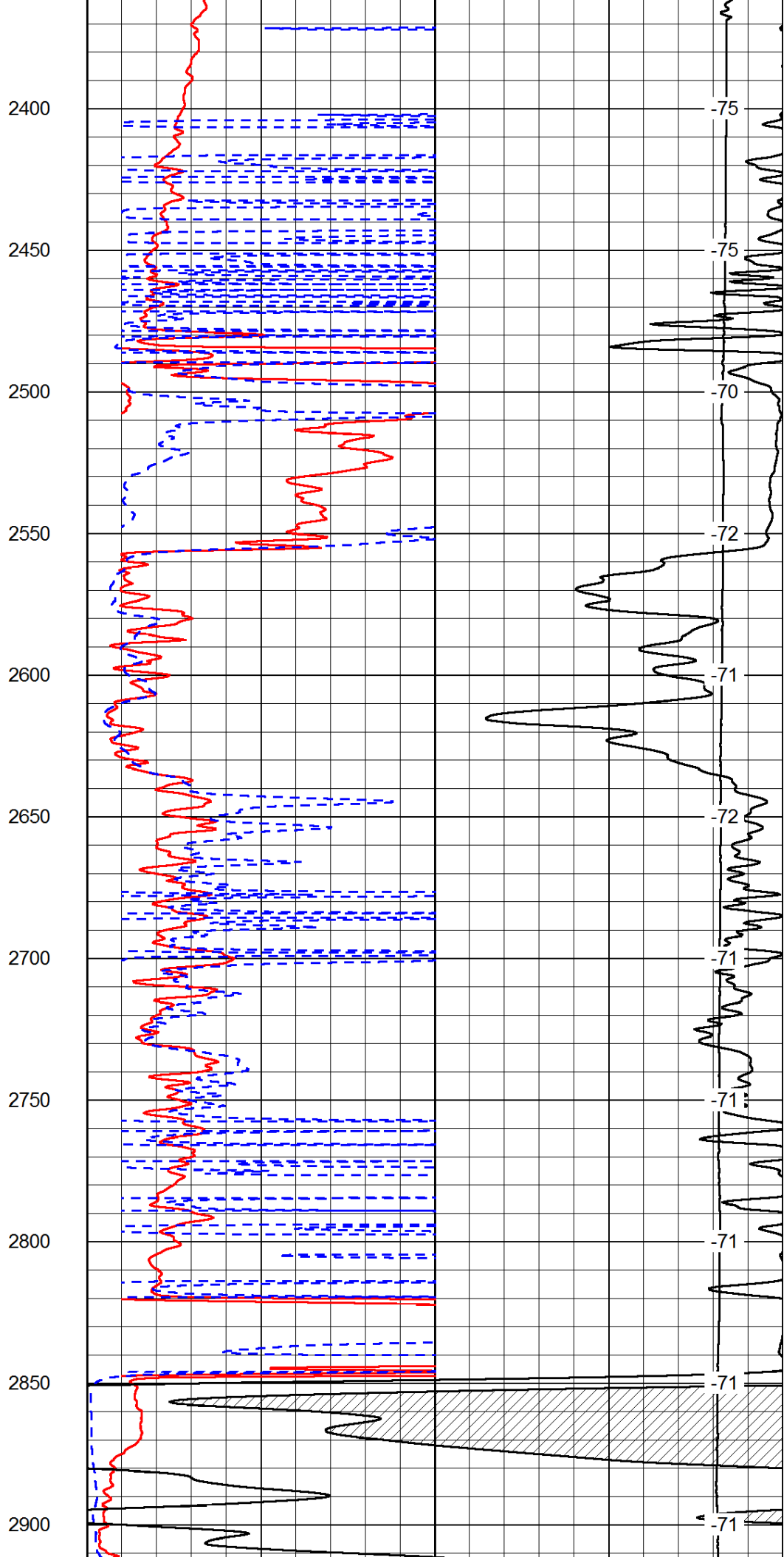
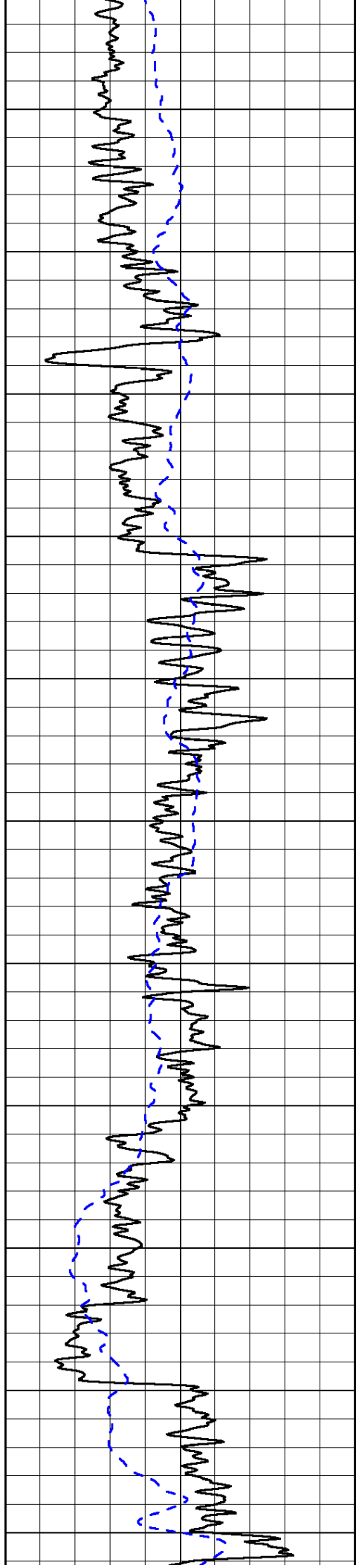
50	Shallow Resistivity	500
50	Deep Resistivity	500

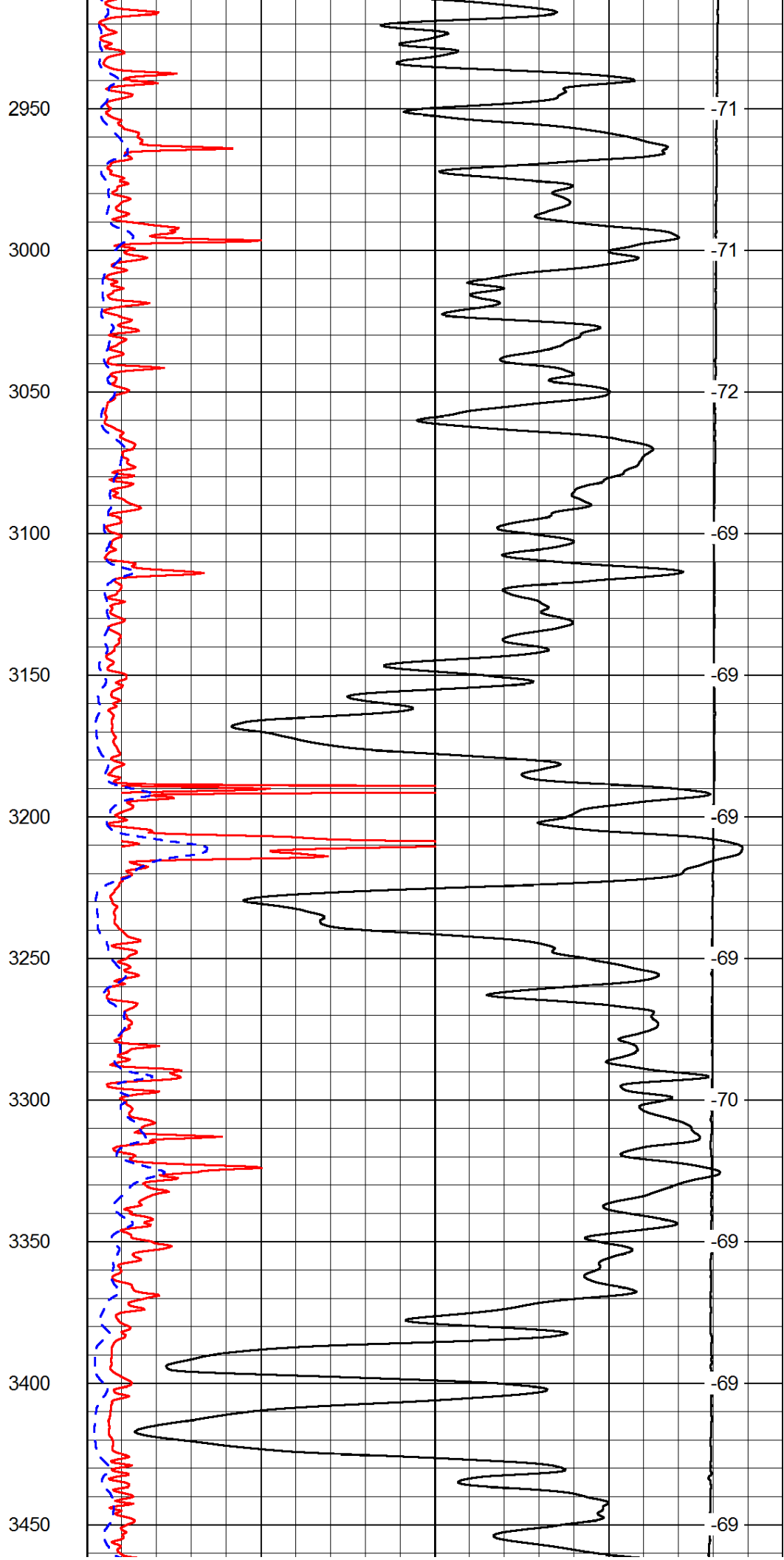
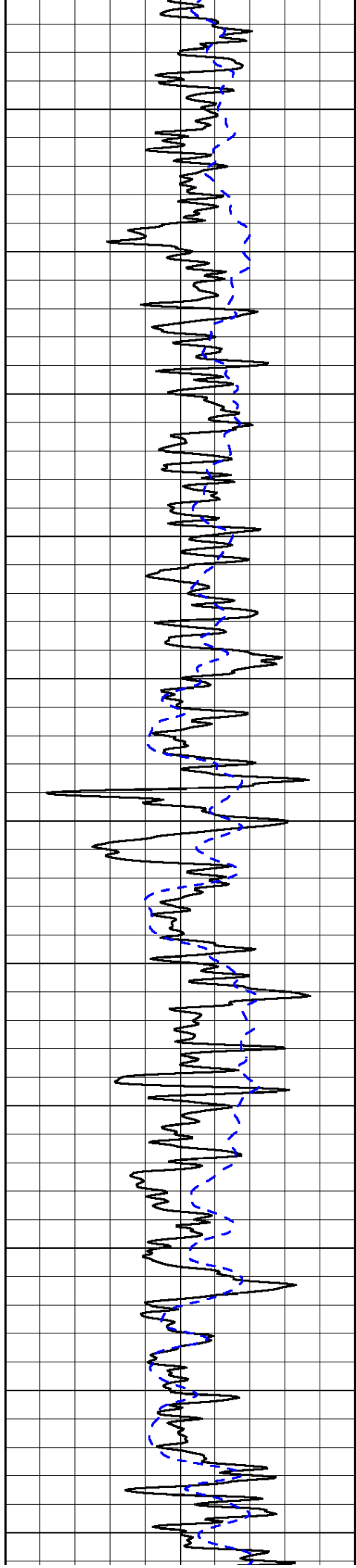


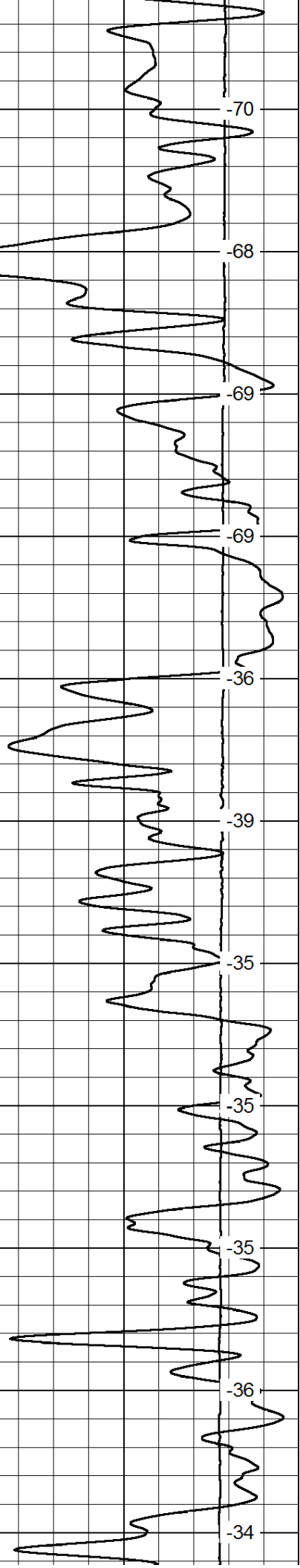
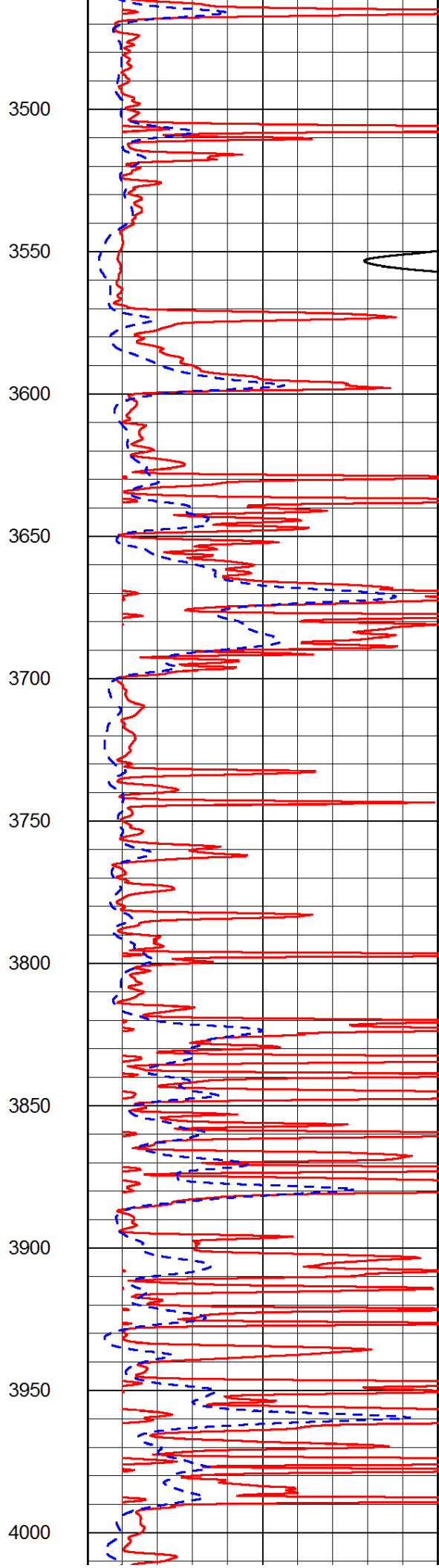
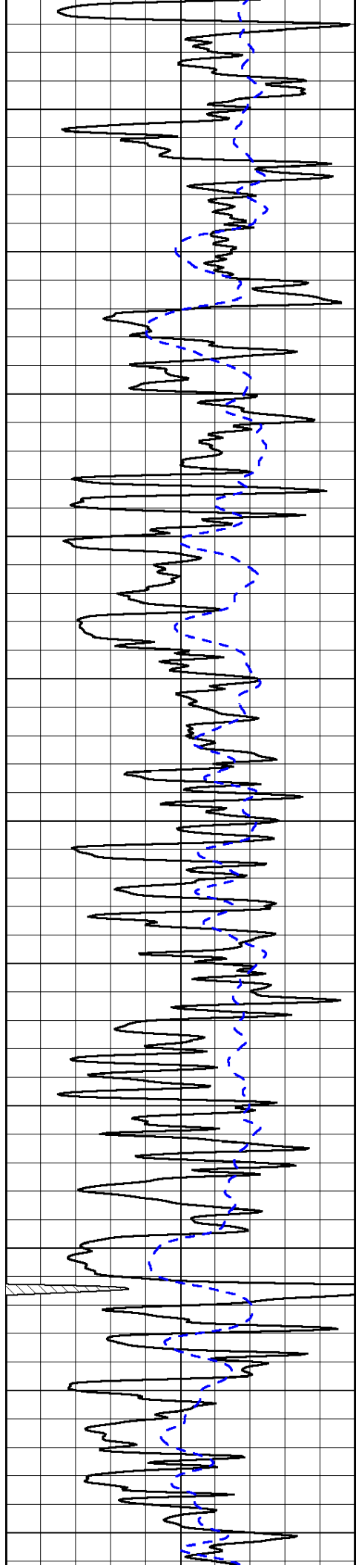


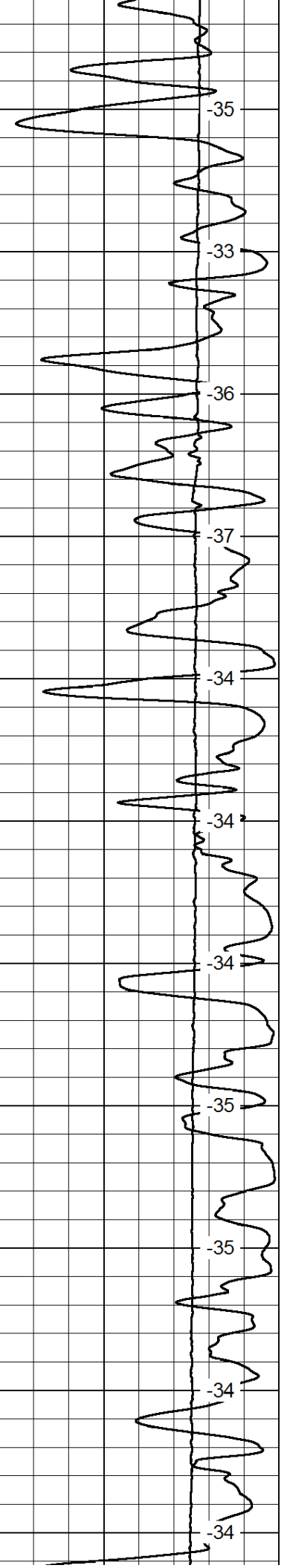
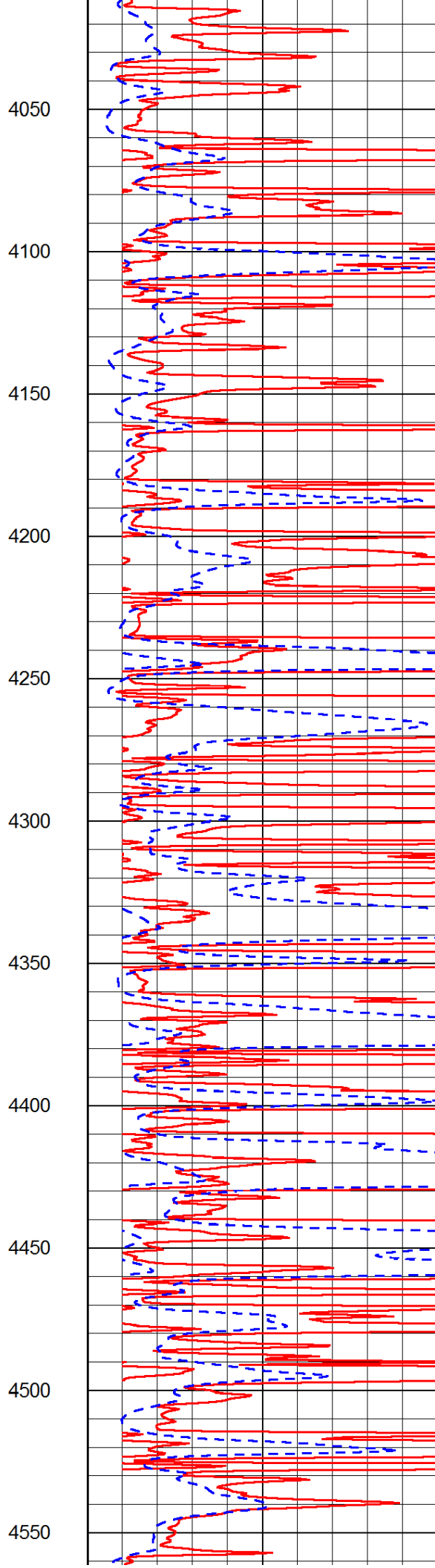
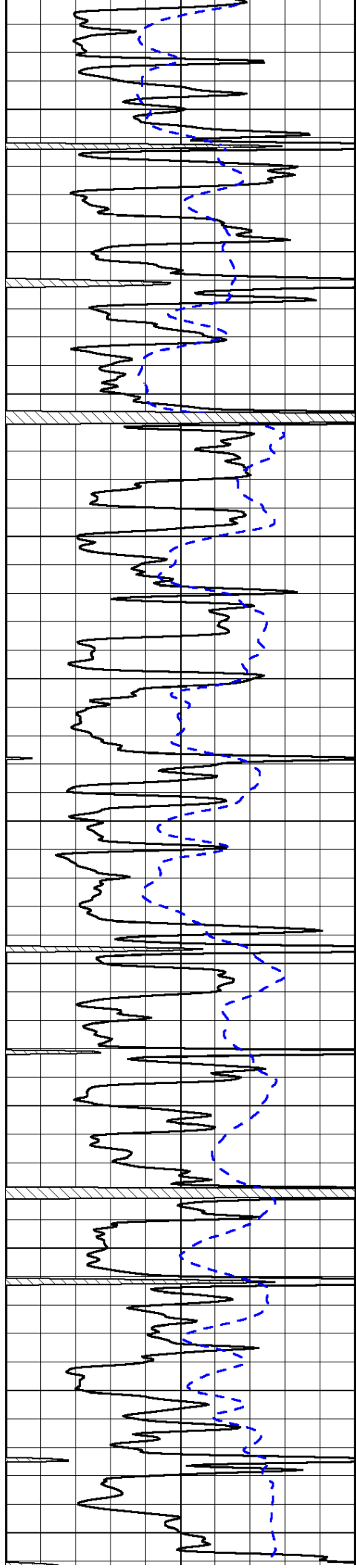










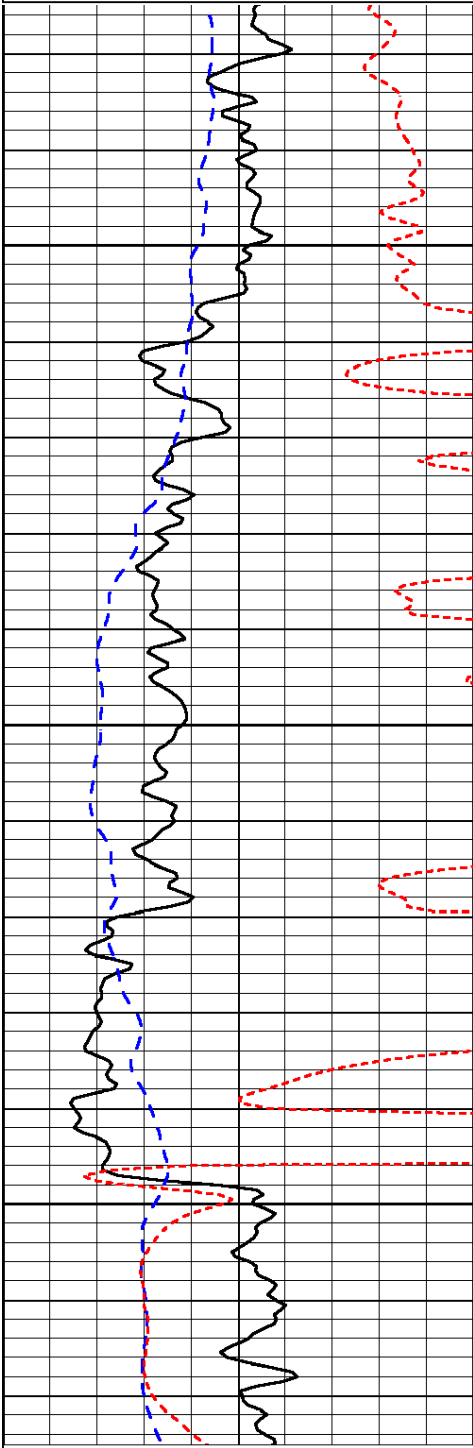


-160 RxoRt 40

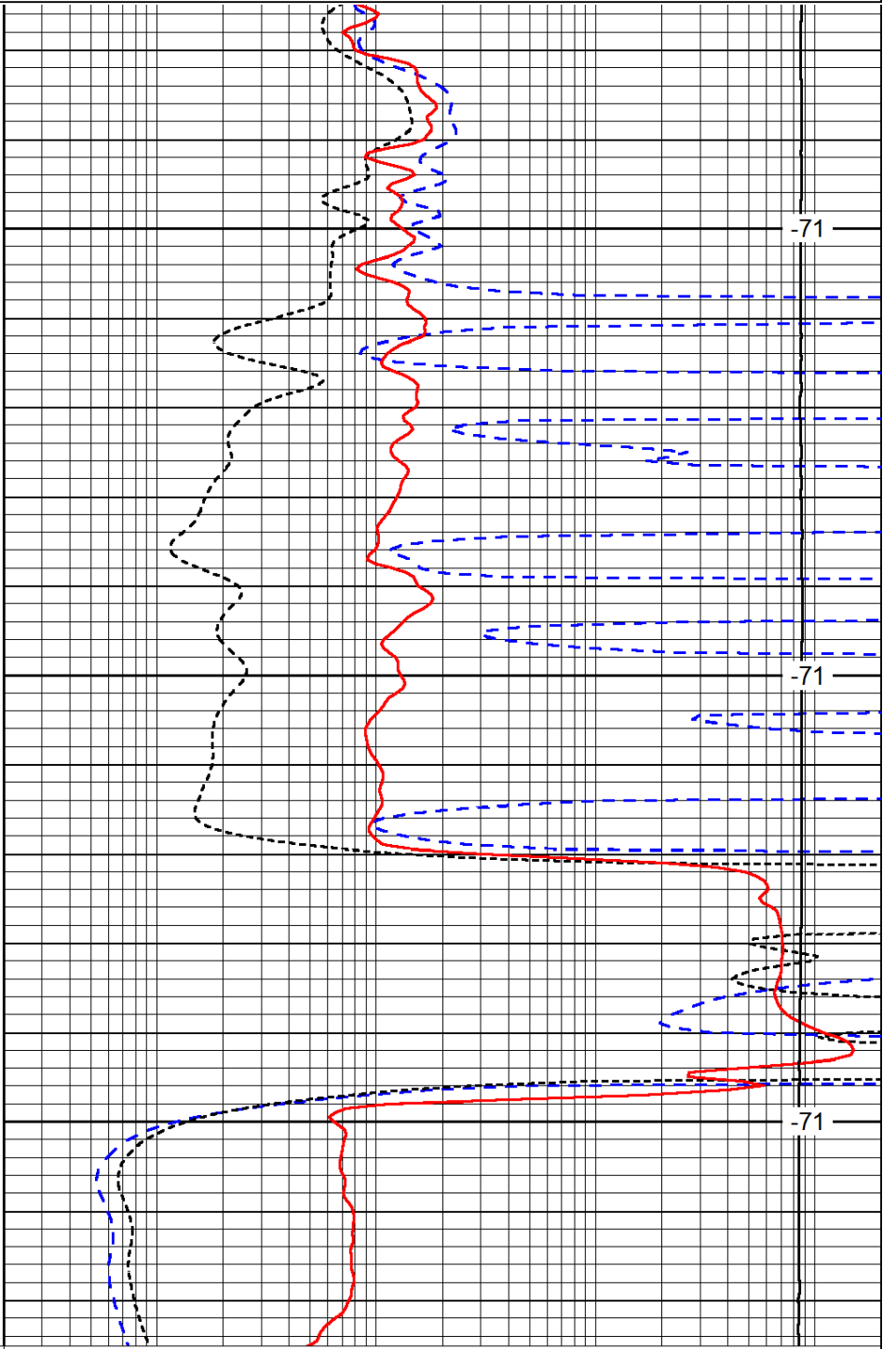
0.2 Shallow Resistivity 2000

15000 Line Tension 0

LSPD



0 Gamma Ray 150
-200 SP (mV) 0
-160 RxoRt 40



0.2 Deep Resistivity 2000
0.2 Medium Resistivity 2000
0.2 Shallow Resistivity 2000
15000 Line Tension 0

LSPD

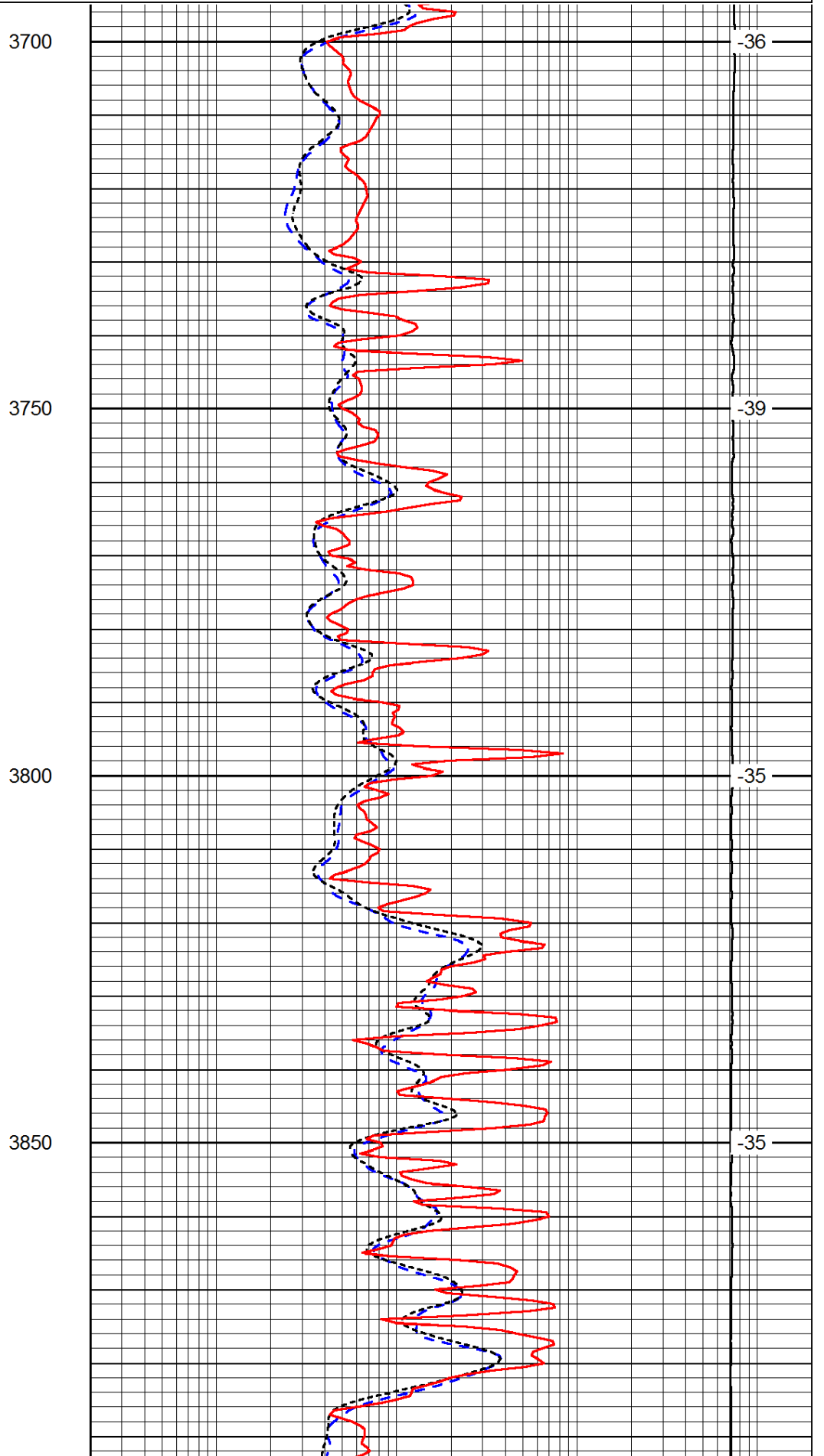
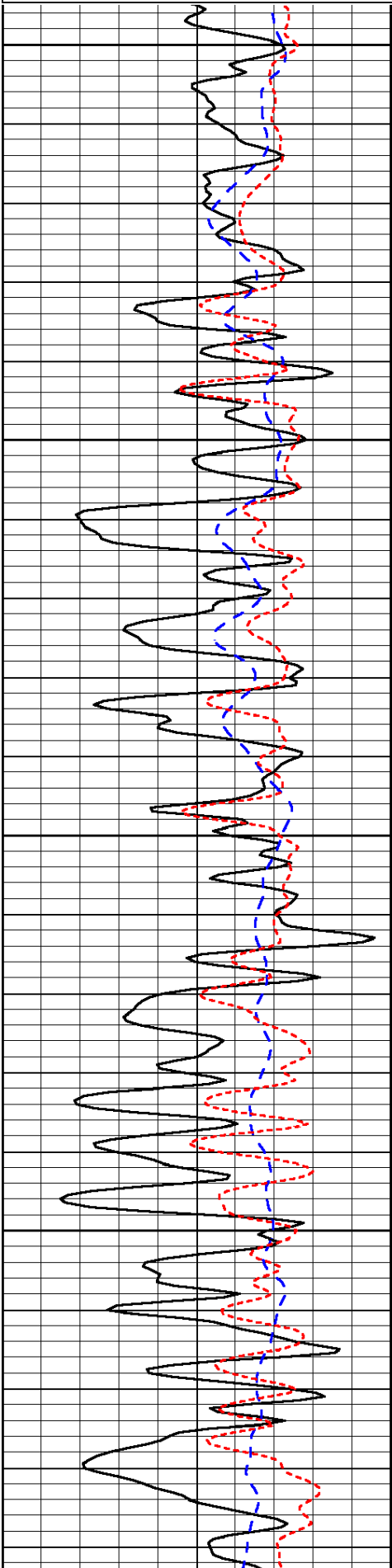
Database File: c:\warrior\data\forestore_medford farms #1-15\forestar_medfordfarms_1-15hd.db
 Dataset Pathname: dil/@00000e60
 Presentation Format: dil
 Dataset Creation: Wed Feb 20 21:24:24 2013
 Charted by: Depth in Feet scaled 1:240

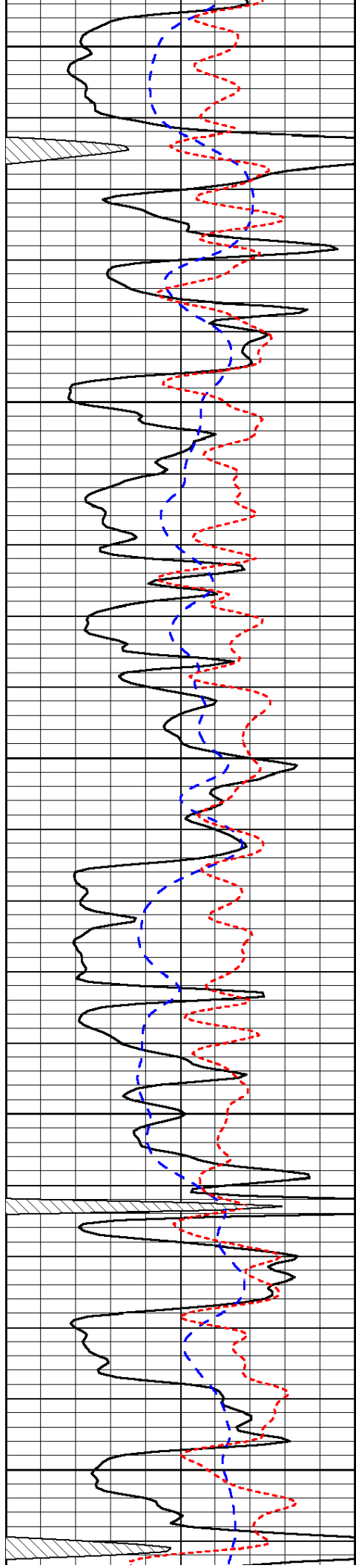
0 Gamma Ray 150 0.2 Deep Resistivity 2000

-200	SP (mV)	0
-160	RxoRt	40

0.2	Medium Resistivity	2000
0.2	Shallow Resistivity	2000
15000	Line Tension	0

LSPD





3900

3950

4000

4050

4100

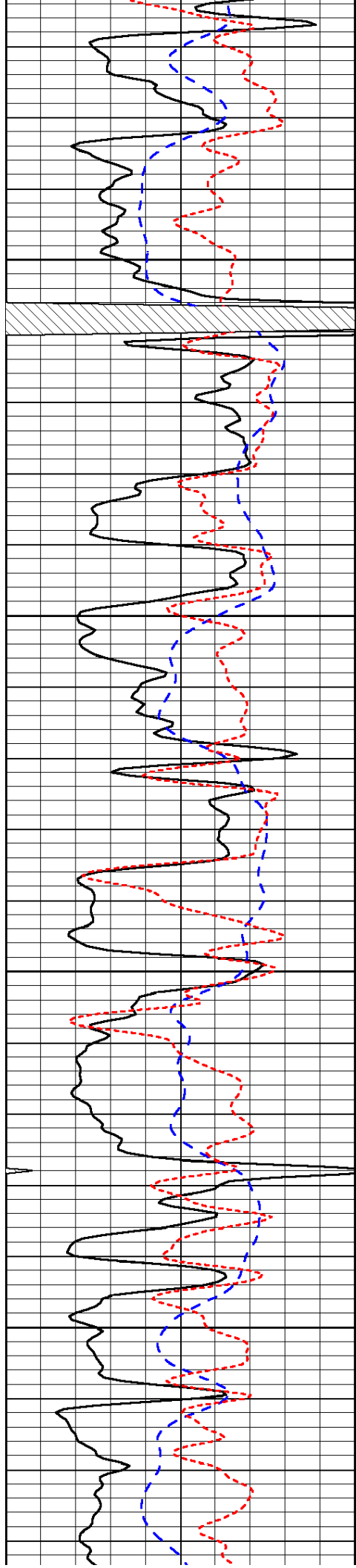
-35

-36

-34

-35

-33

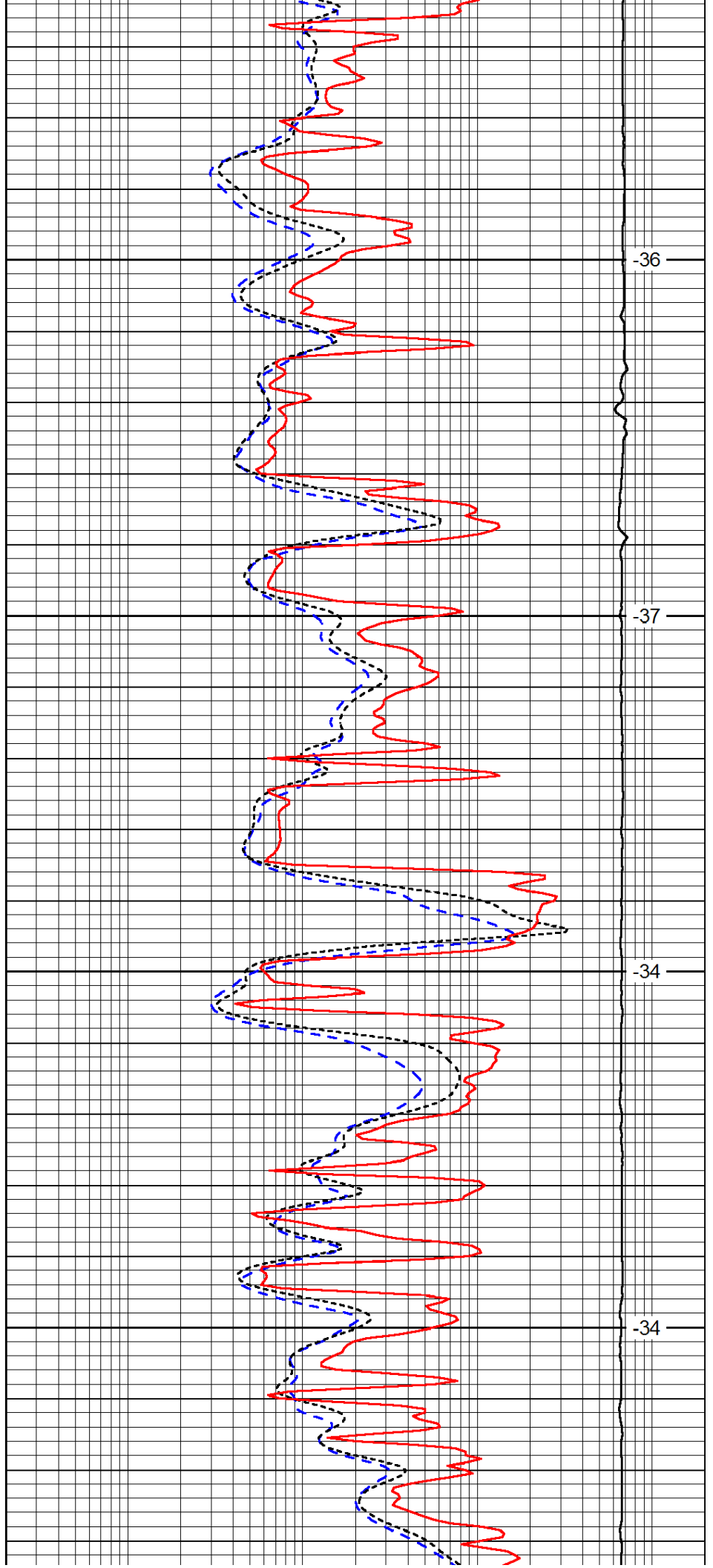


4150

4200

4250

4300

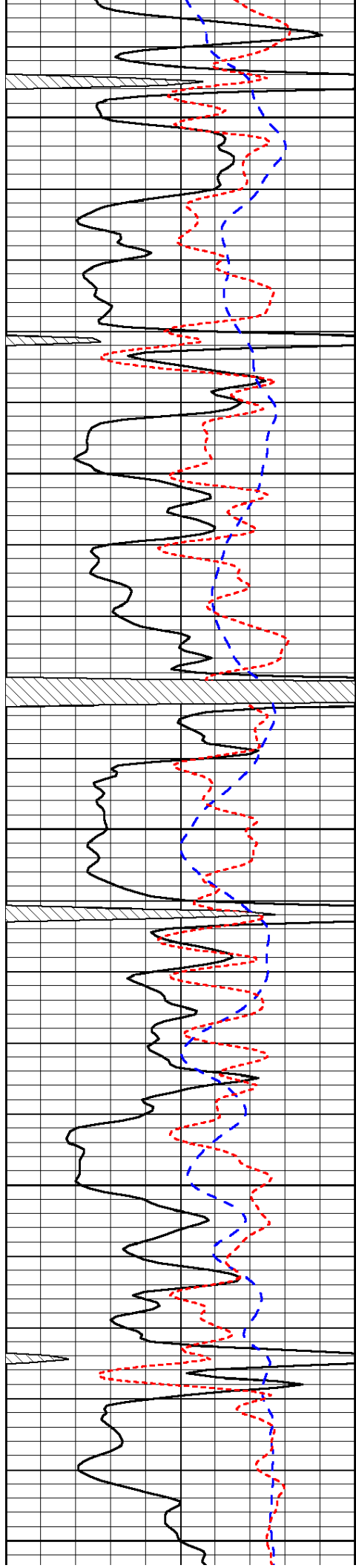


-36

-37

-34

-34



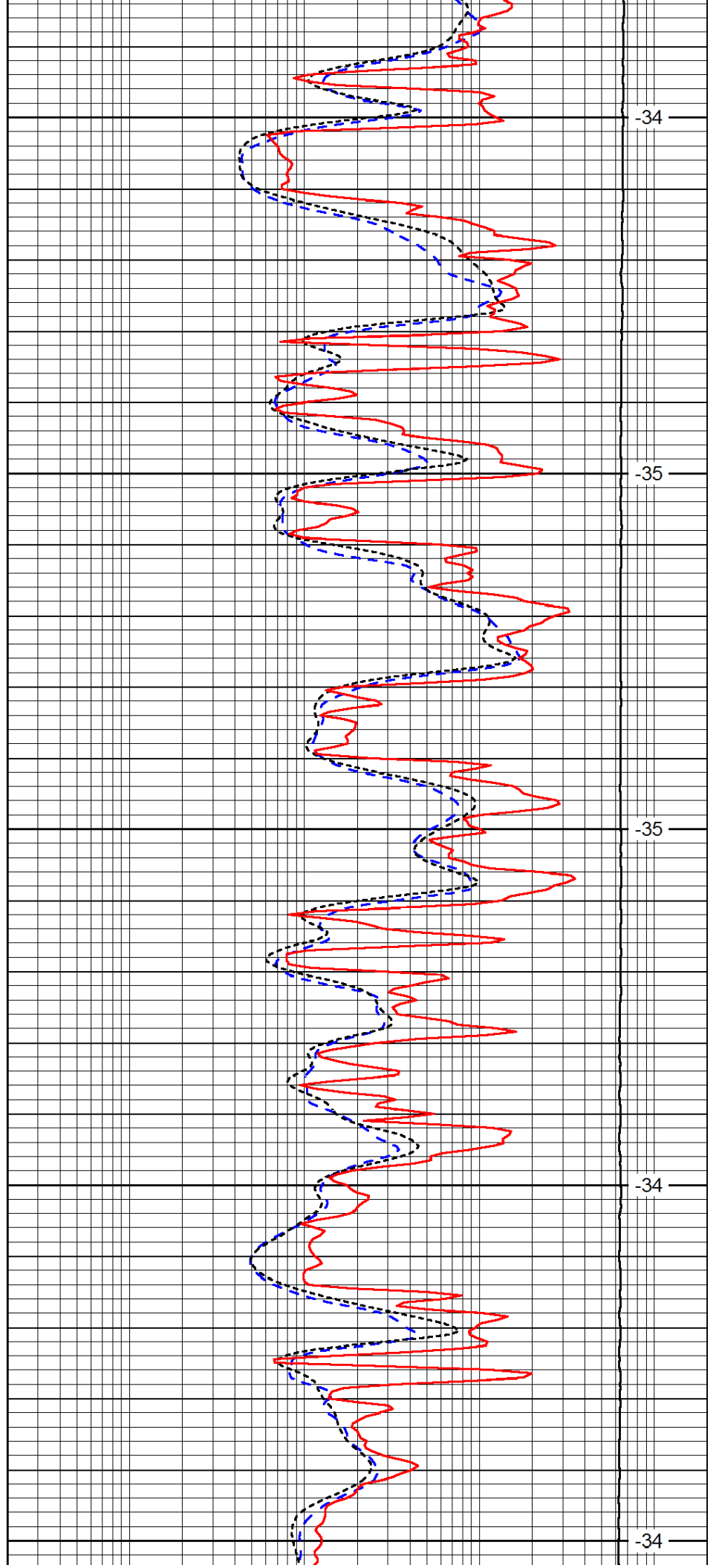
4350

4400

4450

4500

4550



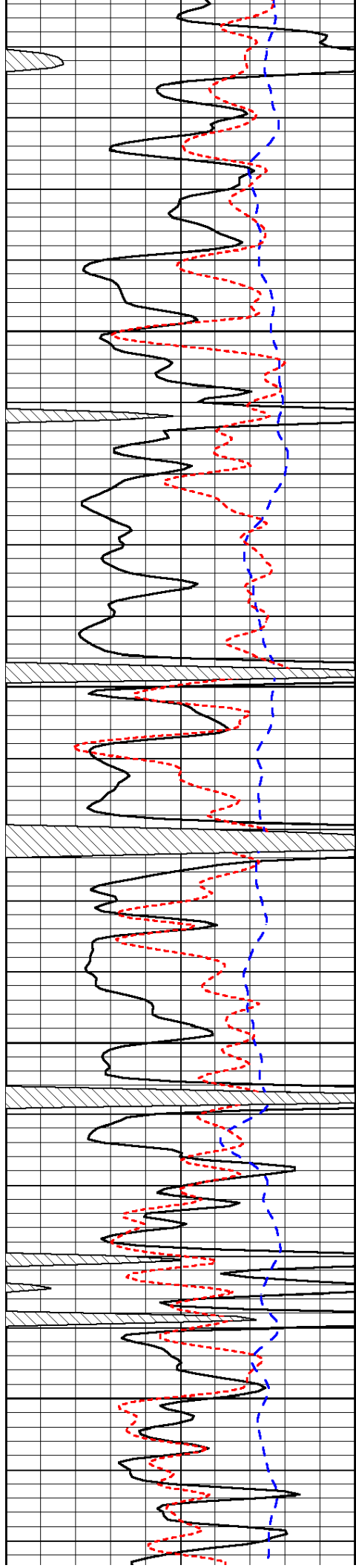
-34

-35

-35

-34

-34

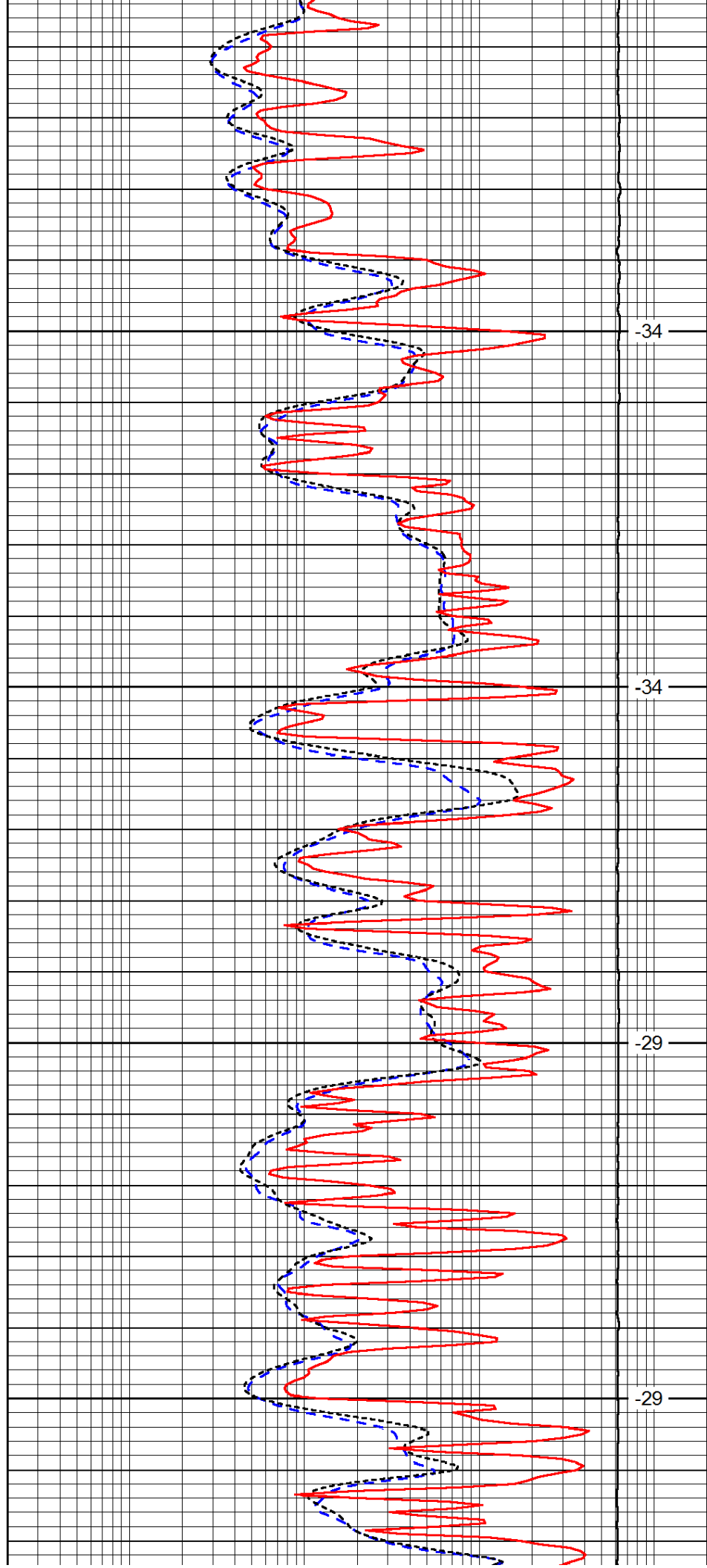


4600

4650

4700

4750

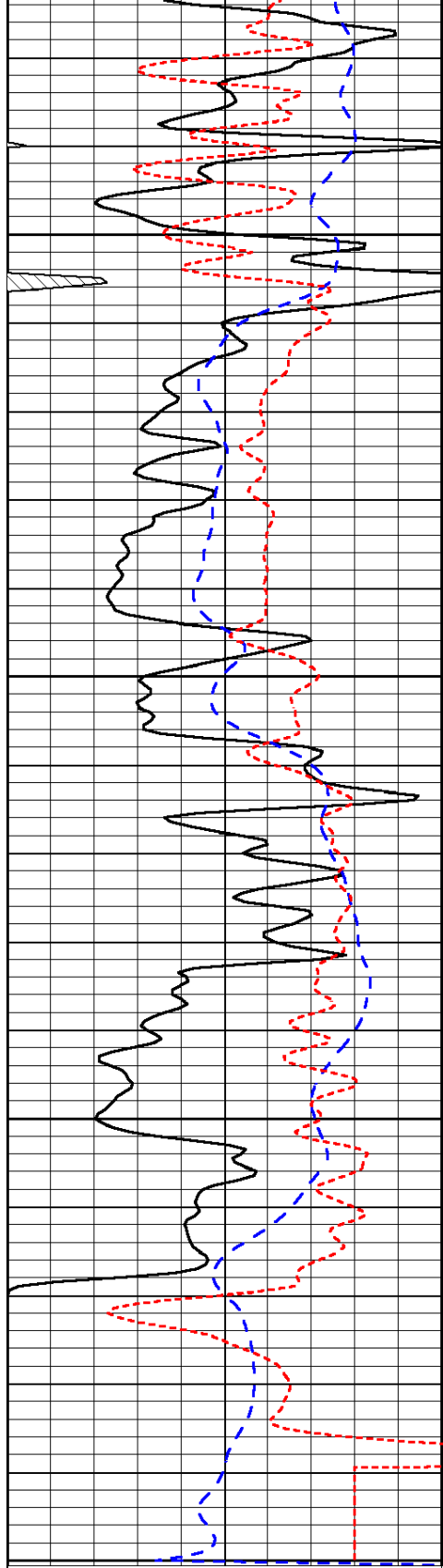


-34

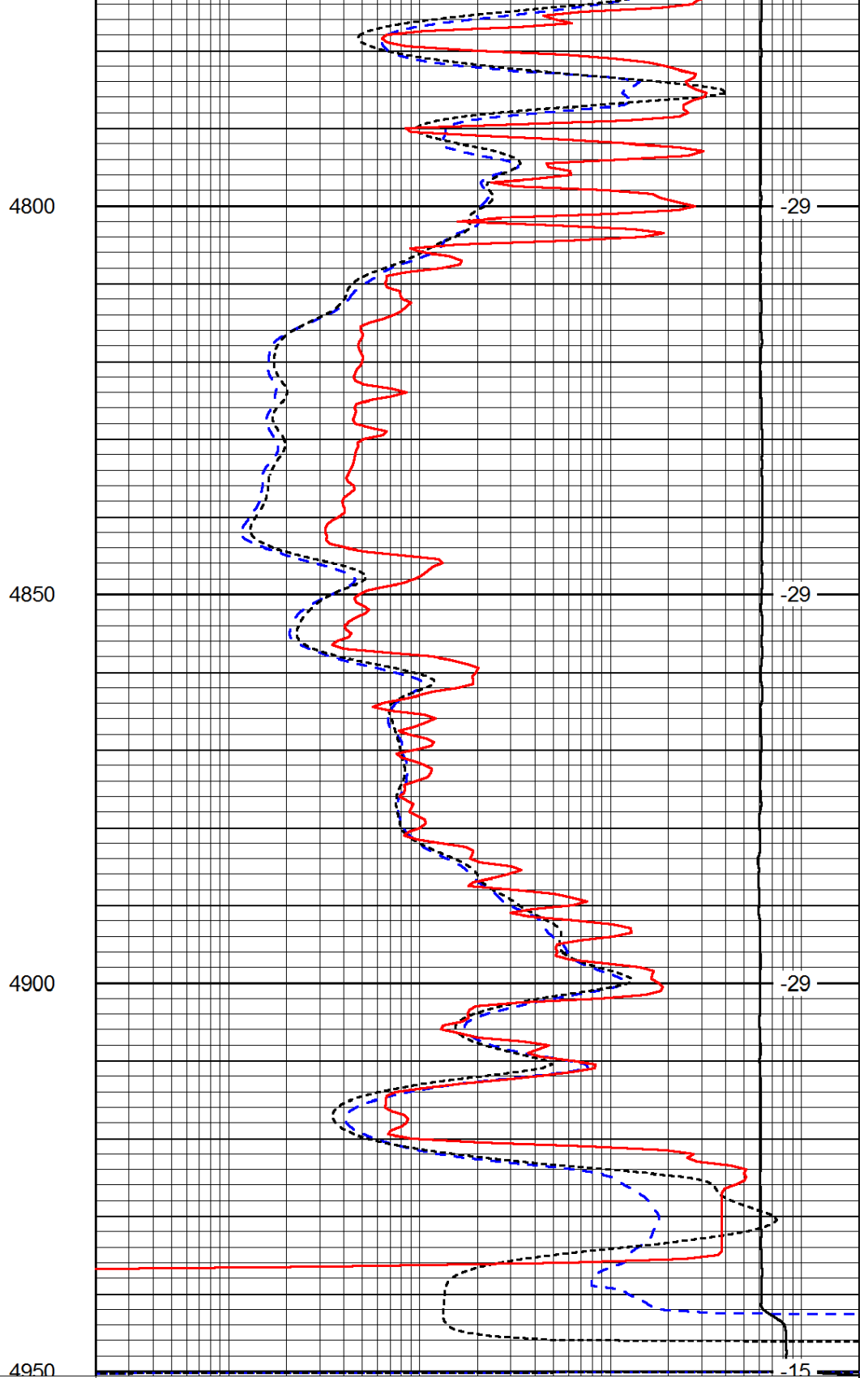
-34

-29

-29



0	Gamma Ray	150
-200	SP (mV)	0
-160	RxoRt	40



0.2	Deep Resistivity	2000
0.2	Medium Resistivity	2000
0.2	Shallow Resistivity	2000
15000	Line Tension	0

LSPD