



Pioneer Energy Services

## Dual Compensated Porosity Log

15-147-20,702-00-00

API No.

**Company** Bach Oil Production  
**Well** Lucy No. 1  
**Field** Jack Creek  
**County** Phillips  
**State** Kansas

**Location** NW SE SW NE  
 2100' FNL & 1750' FEL  
 Sec: 3 Twp: 2 S Rge: 19 W

**Ground Level** Elevation 2223  
**Log Measured From** Kelly Bushing 5 Ft. Above Perm. Datum  
**Drilling Measured From** Kelly Bushing

**Other Services**  
 DIL/MEI  
**Elevation**  
 K.B. 2228  
 D.F. 2223  
 G.L. 2223

Date	2/17/2013	
Run Number	One	
Type Log	CNL / CDL	
Depth Driller	3655	
Depth Logger	3656	
Bottom Logged Interval	3635	
Top Logged Interval	3000	
Type Fluid In Hole	Chemical	
Salinity, PPM CL	400	
Density	9.0	
Level	Full	
Max. Rec. Temp. F	113	
Operating Rig Time	4 Hours	
Equipment -- Location	108 Hays	
Recorded By	D. Martin	
Witnessed By	Bob Petersen	

Borehole Record		Casing Record					
Run No.	Bit	From	To	Size	Wgt.	From	To
One	12.25	00	209	8.625	23#	00	209
Two	7.875	209	TD				

<<< Fold Here >>>

All interpretations are opinions based on inferences from electrical or other measurements and we cannot and do not guarantee the accuracy or correctness of any interpretation, and we shall not, except in the case of gross or willful negligence on our part, be liable or responsible for any loss, costs, damages, or expenses incurred or sustained by anyone resulting from any interpretation made by any of our officers, agents or employees. These interpretations are also subject to our general terms and conditions set out in our current Price Schedule.

### Comments

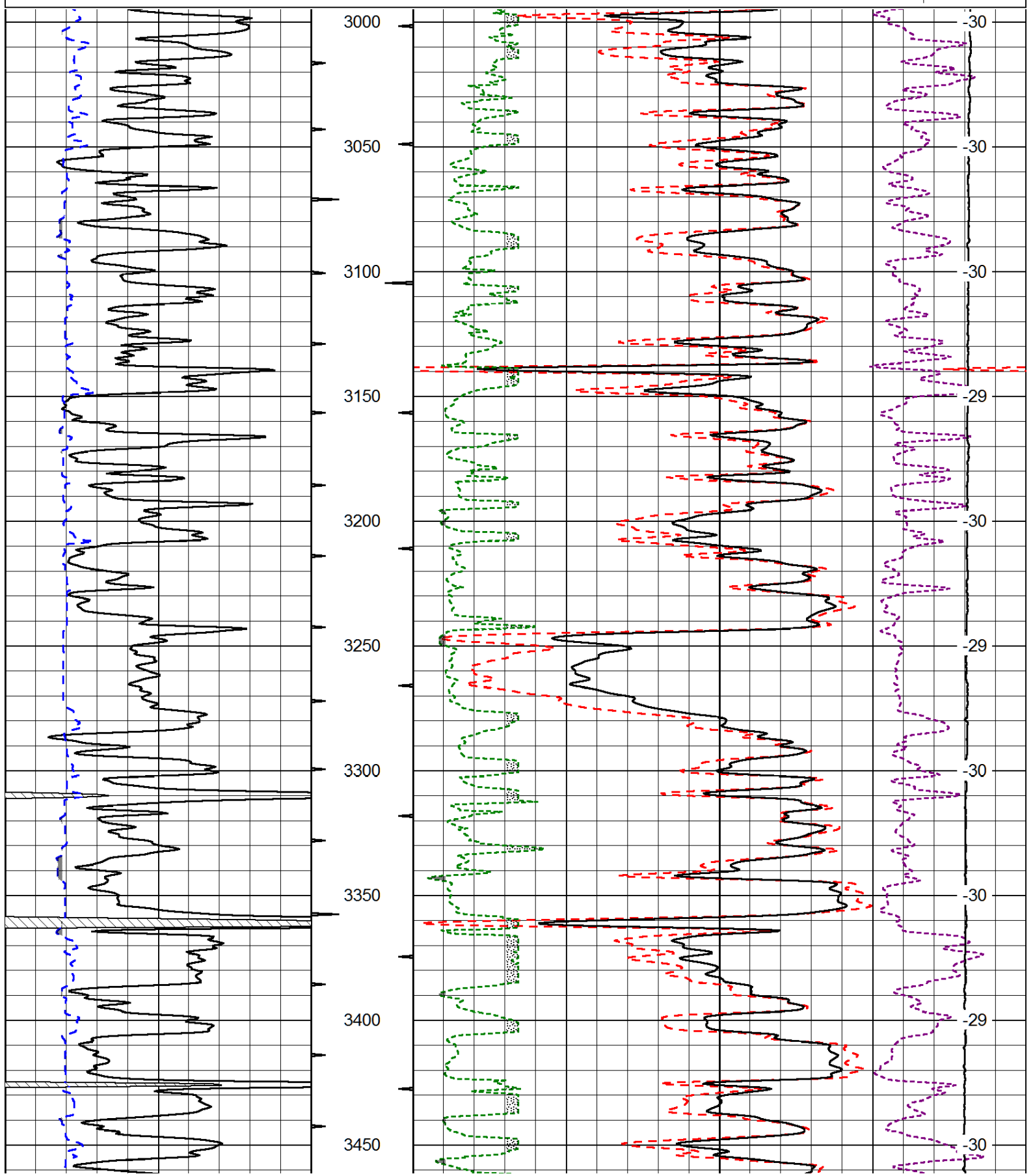
Thank you for using Log-Tech, Inc.  
 (785) 625-3858  
 Phillipsburg, KS  
 8 N on Hwy 183 to Hunter Rd.,  
 6 1/4 W, N Into

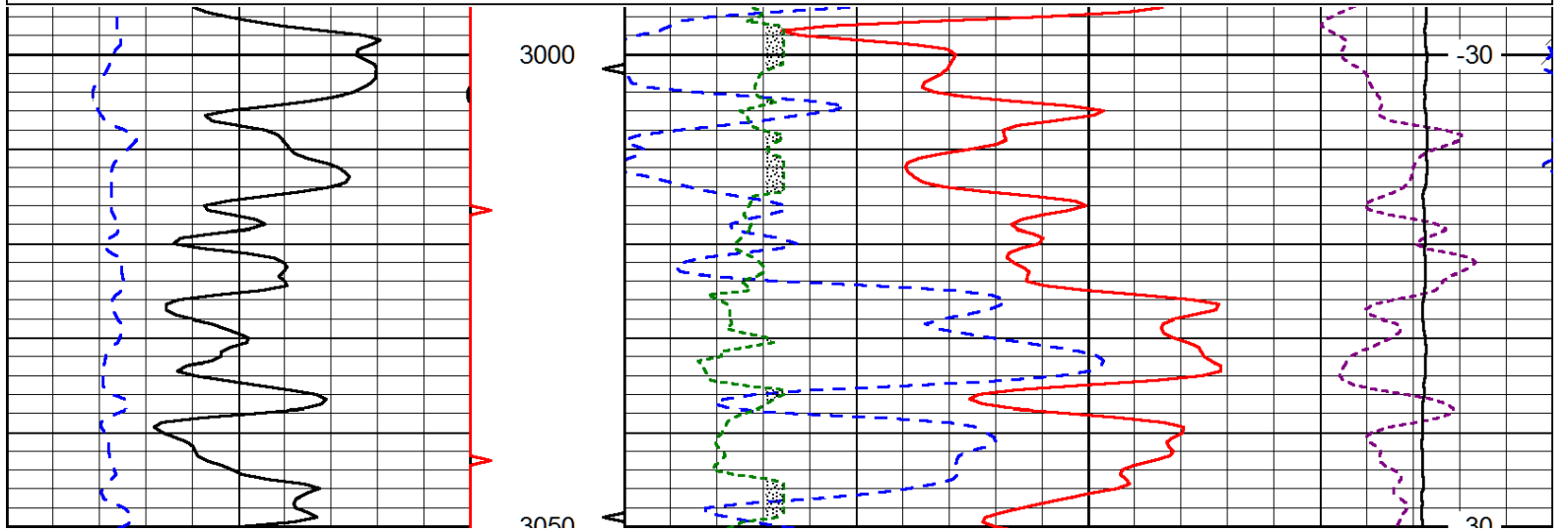
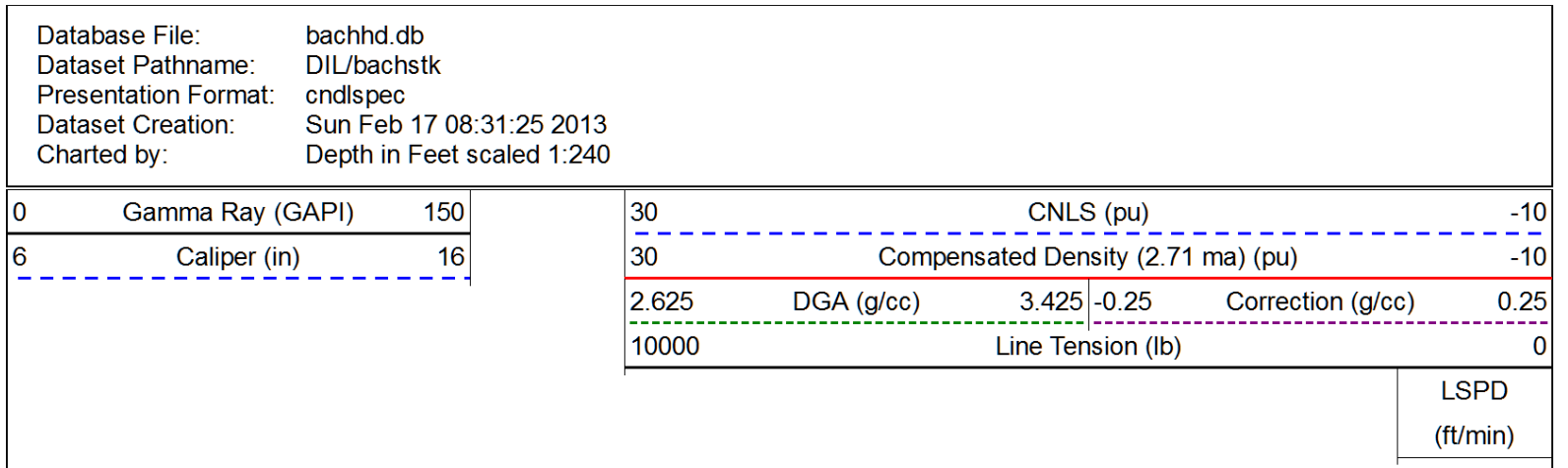
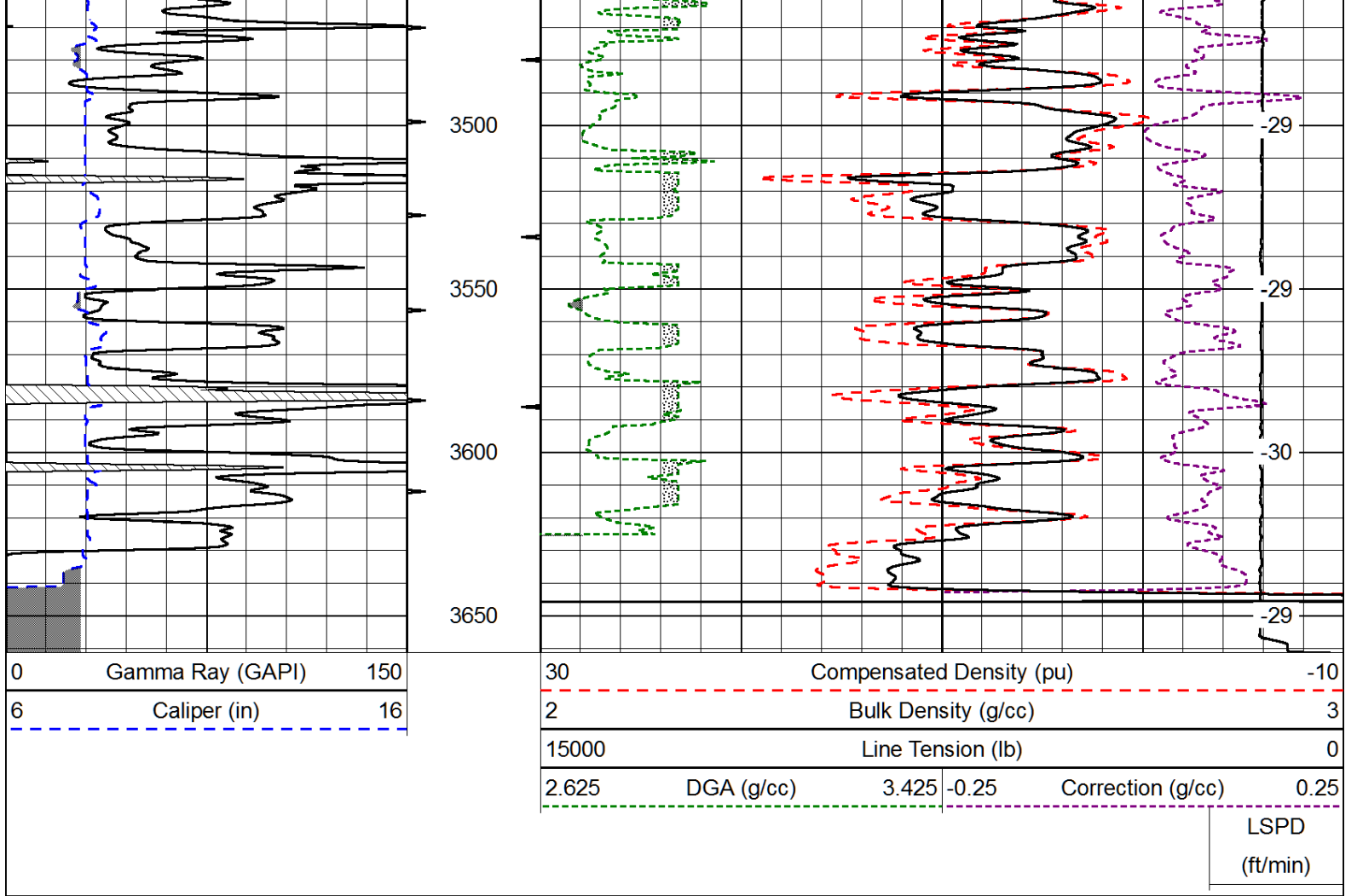
Database File: bachhd.db  
 Dataset Pathname: DIL/bachstk  
 Presentation Format: cdl  
 Dataset Creation: Sun Feb 17 08:31:25 2013  
 Charted by: Depth in Feet scaled 1:600

0	Gamma Ray (GAPI)	150
6	Caliper (in)	16

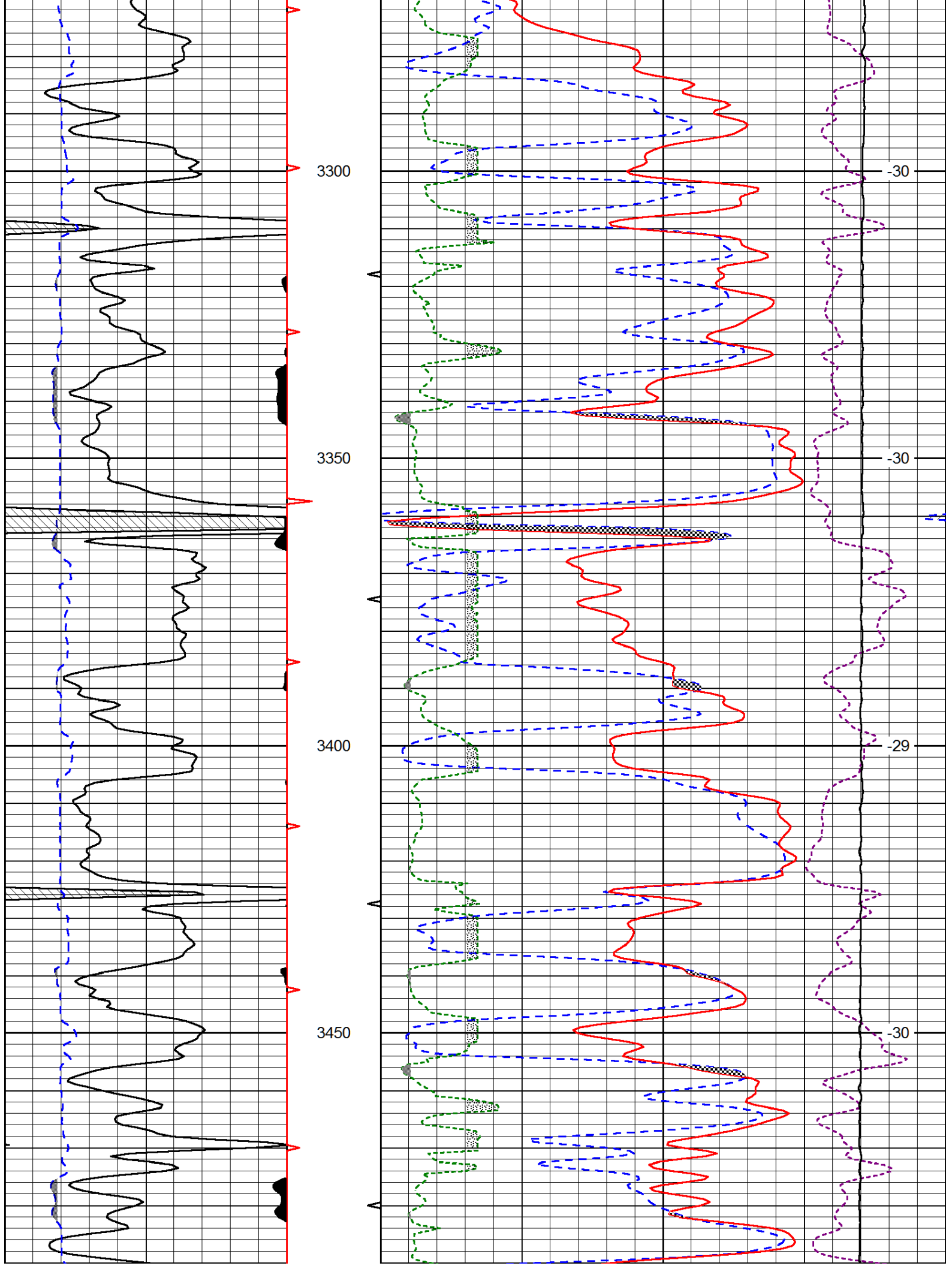
30	Compensated Density (pu)		-10
2	Bulk Density (g/cc)		3
15000	Line Tension (lb)		0
2.625	DGA (g/cc)	3.425	-0.25
		Correction (g/cc)	0.25

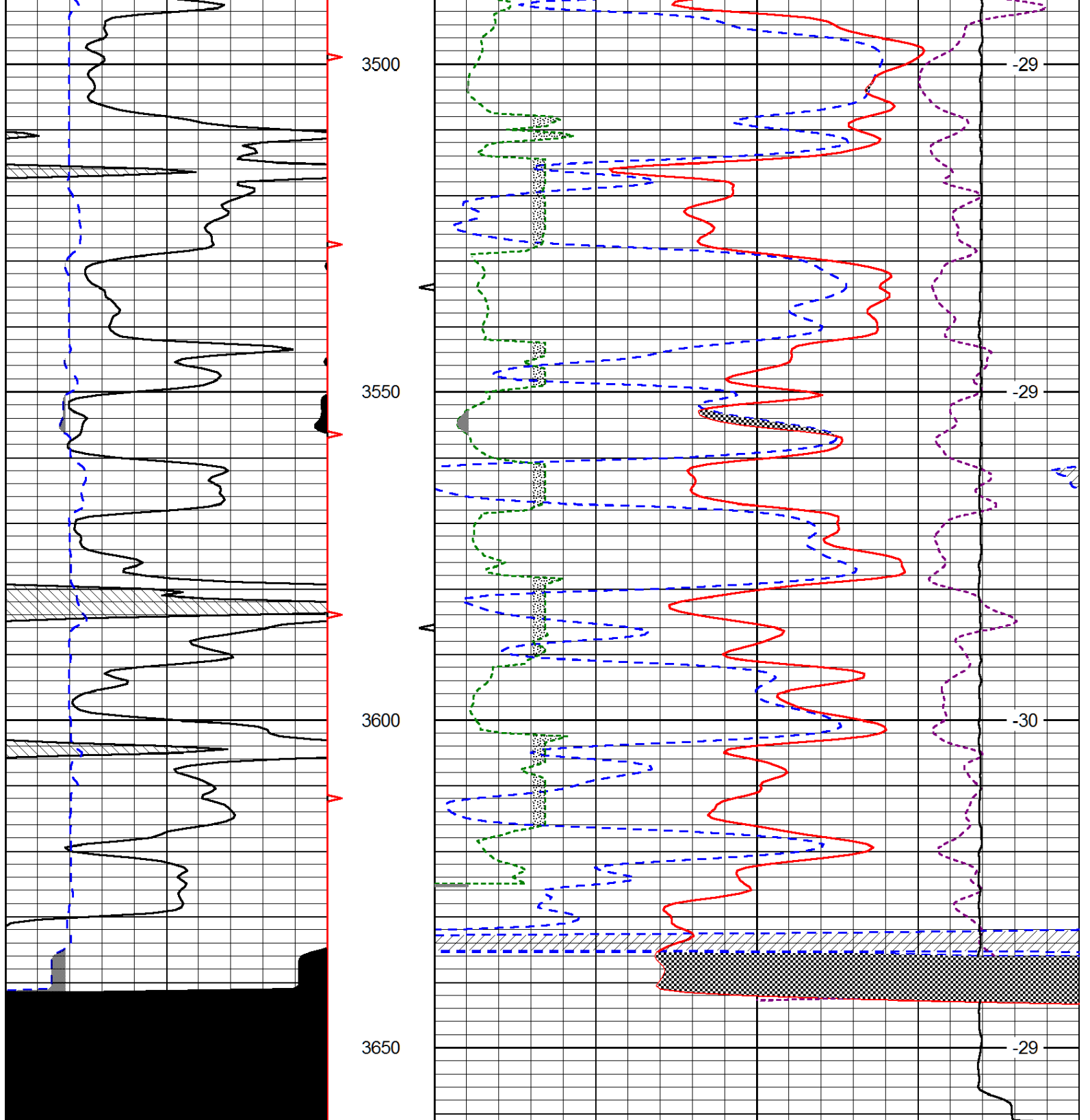
LSPD  
(ft/min)











0	Gamma Ray (GAPI)	150	30	CNLS (pu)	-10
6	Caliper (in)	16	30	Compensated Density (2.71 ma) (pu)	-10
			2.625	DGA (g/cc)	3.425 -0.25
				Correction (g/cc)	0.25
			10000	Line Tension (lb)	0
				LSPD (ft/min)	