



Pioneer Energy Services

# Microresistivity Log

15-147-20,702-00-00

API No.

Company **Bach Oil Production**  
 Well **Lucy No. 1**  
 Field **Jack Creek**  
 County **Phillips** State **Kansas**

Location **NW SE SW NE  
 2100' FNL & 1750' FEL**  
 Sec: **3** Twp: **2 S** Rge: **19 W**

Other Services  
 CNL/CDL  
 DIL

Permanent Datum **Ground Level** Elevation **2223**  
 Log Measured From **Kelly Bushing** **5** Ft. Above Perm. Datum  
 Drilling Measured From **Kelly Bushing**

Elevation  
 K.B. 2228  
 D.F. 2223  
 G.L. 2223

Date	2/17/2013
Run Number	Two
Depth Driller	3655
Depth Logger	3656
Bottom Logged Interval	3655
Top Log Interval	3000
Casing Driller	8.625 @ 209
Casing Logger	209
Bit Size	7.875
Type Fluid in Hole	Chemical
Salinity, ppm CL	400
Density / Viscosity	9.0   72
pH / Fluid Loss	10.5   5.6
Source of Sample	Flowline
Rm @ Meas. Temp	.60 @ 65
Rmf @ Meas. Temp	.45 @ 65
Rmc @ Meas. Temp	.81 @ 65
Source of Rmf / Rmc	Charts
Rm @ BHT	.35 @ 113
Operating Rig Time	4 Hours
Max Rec. Temp. F	113
Equipment Number	108
Location	Hays
Recorded By	D. Martin
Witnessed By	Bob Petersen

<<< Fold Here >>>

All interpretations are opinions based on inferences from electrical or other measurements and we cannot and do not guarantee the accuracy or correctness of any interpretation, and we shall not, except in the case of gross or willful negligence on our part, be liable or responsible for any loss, costs, damages, or expenses incurred or sustained by anyone resulting from any interpretation made by any of our officers, agents or employees. These interpretations are also subject to our general terms and conditions set out in our current Price Schedule.

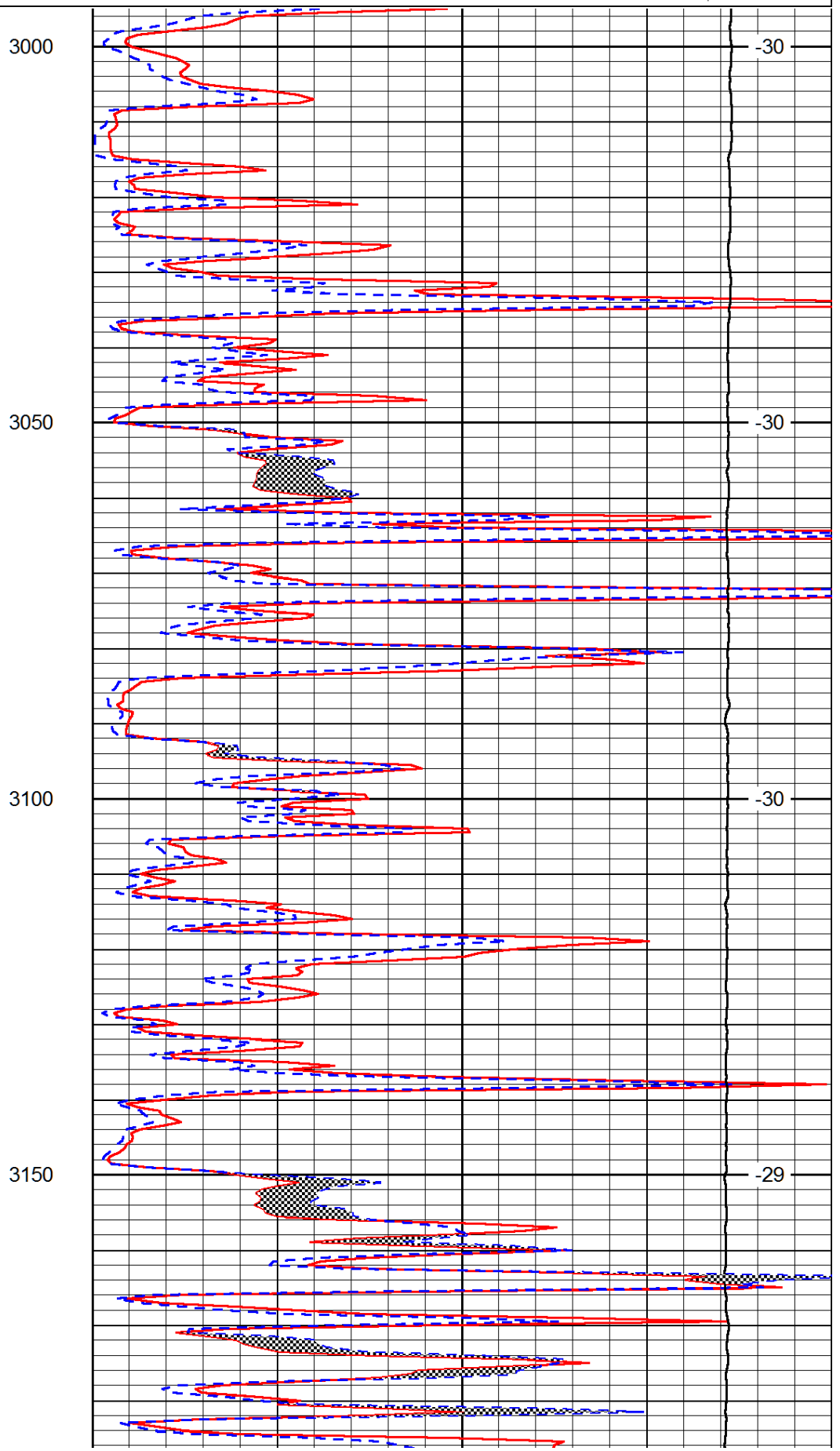
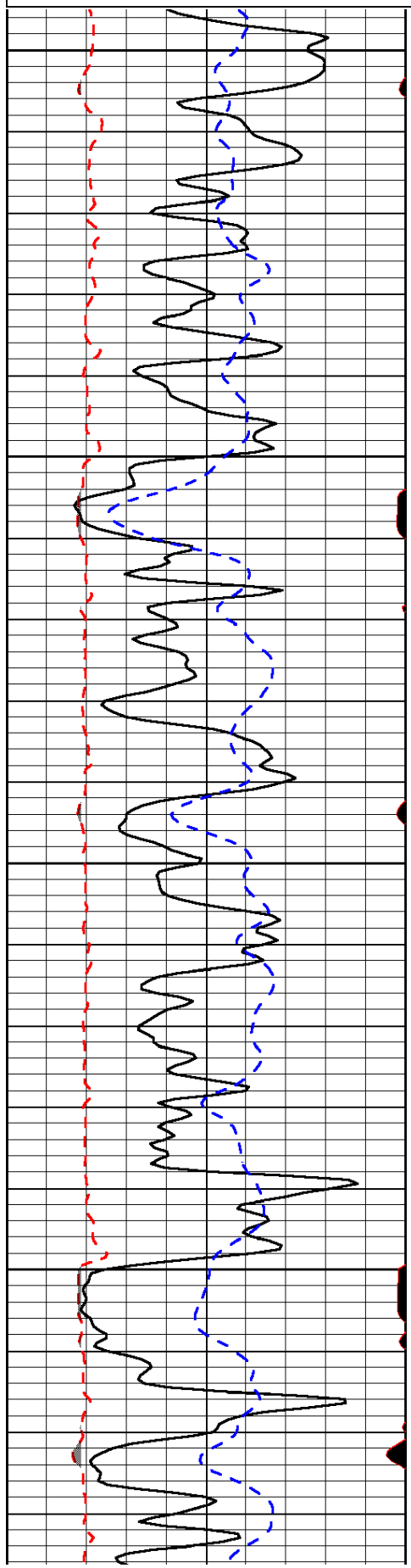
Comments

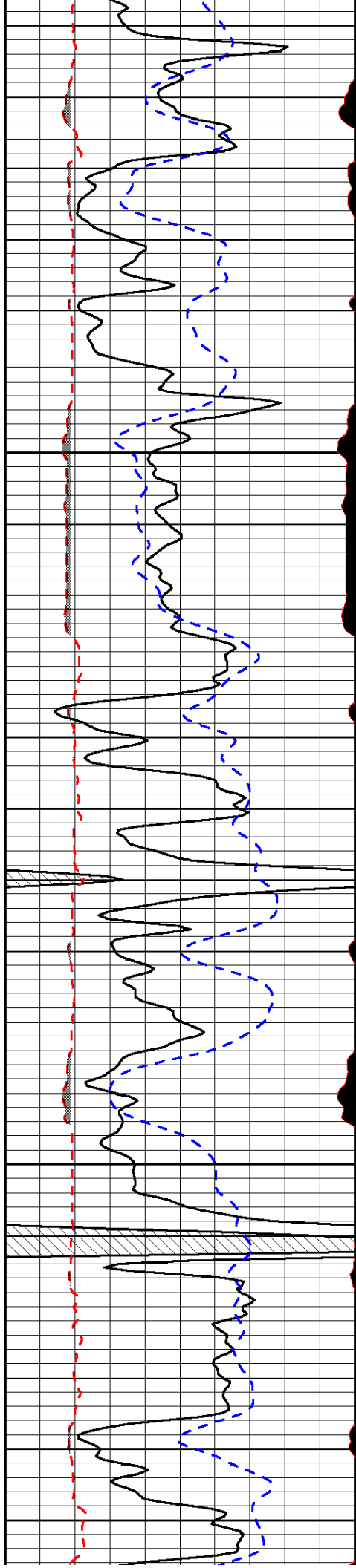
Thank you for using Log-Tech, Inc.  
 (785) 625-3858  
 Phillipsburg, KS  
 8 N on Hwy 183 to Hunter Rd.,  
 6 1/4 W, N Into

Database File: bachhd.db  
 Dataset Pathname: DIL/bachstk  
 Presentation Format: micro  
 Dataset Creation: Sun Feb 17 08:31:25 2013  
 Charted by: Depth in Feet scaled 1:240

0	Gamma Ray (GAPI)	150
6	MCAL (in)	16
2.875	Mud Cake (in)	7.875
-200	SP (mV)	0

0	Micro Inverse 1 X 1 (Ohm-m)	40
0	Micro Normal 2" (Ohm-m)	40
10000	Line Weight (lb)	0
		LSPD (ft/min)





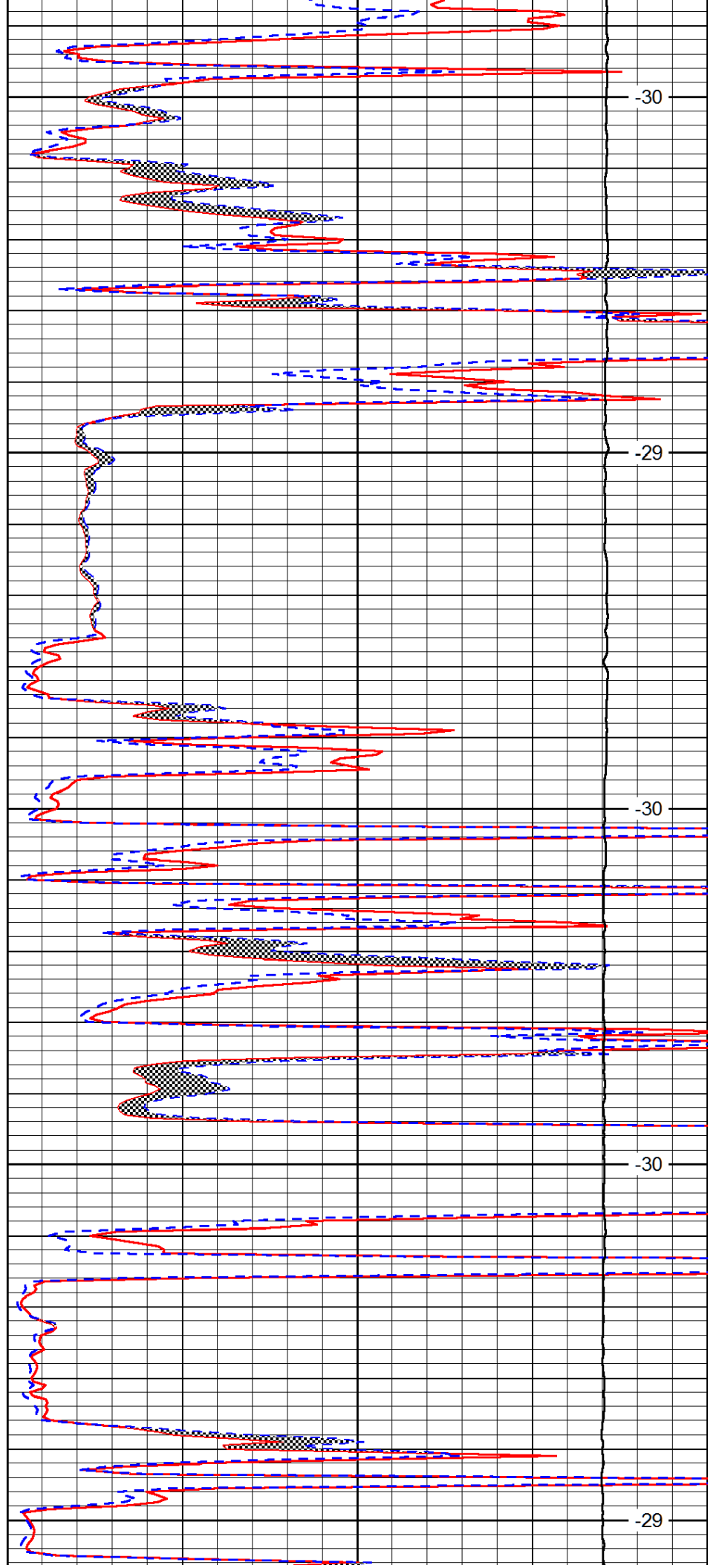
3200

3250

3300

3350

3400



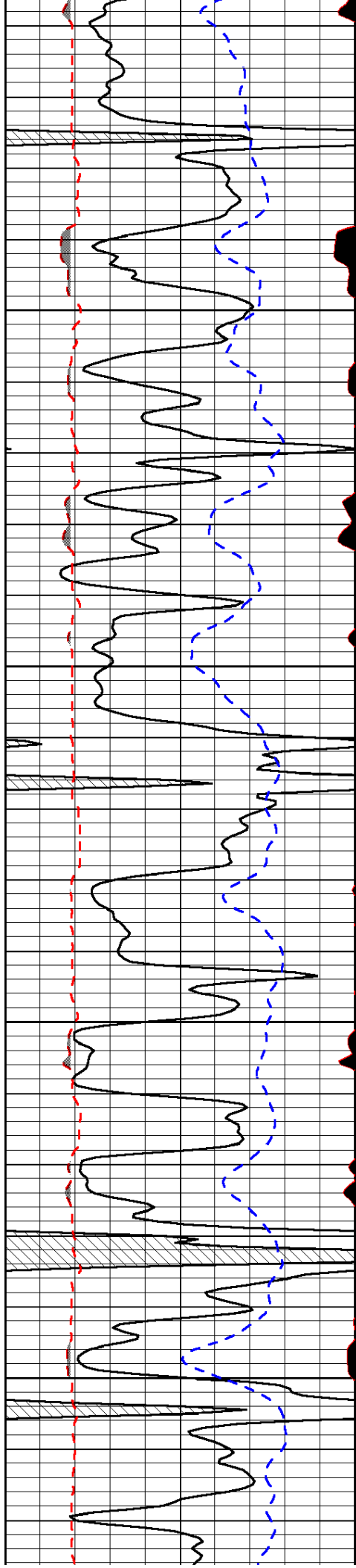
-30

-29

-30

-30

-29

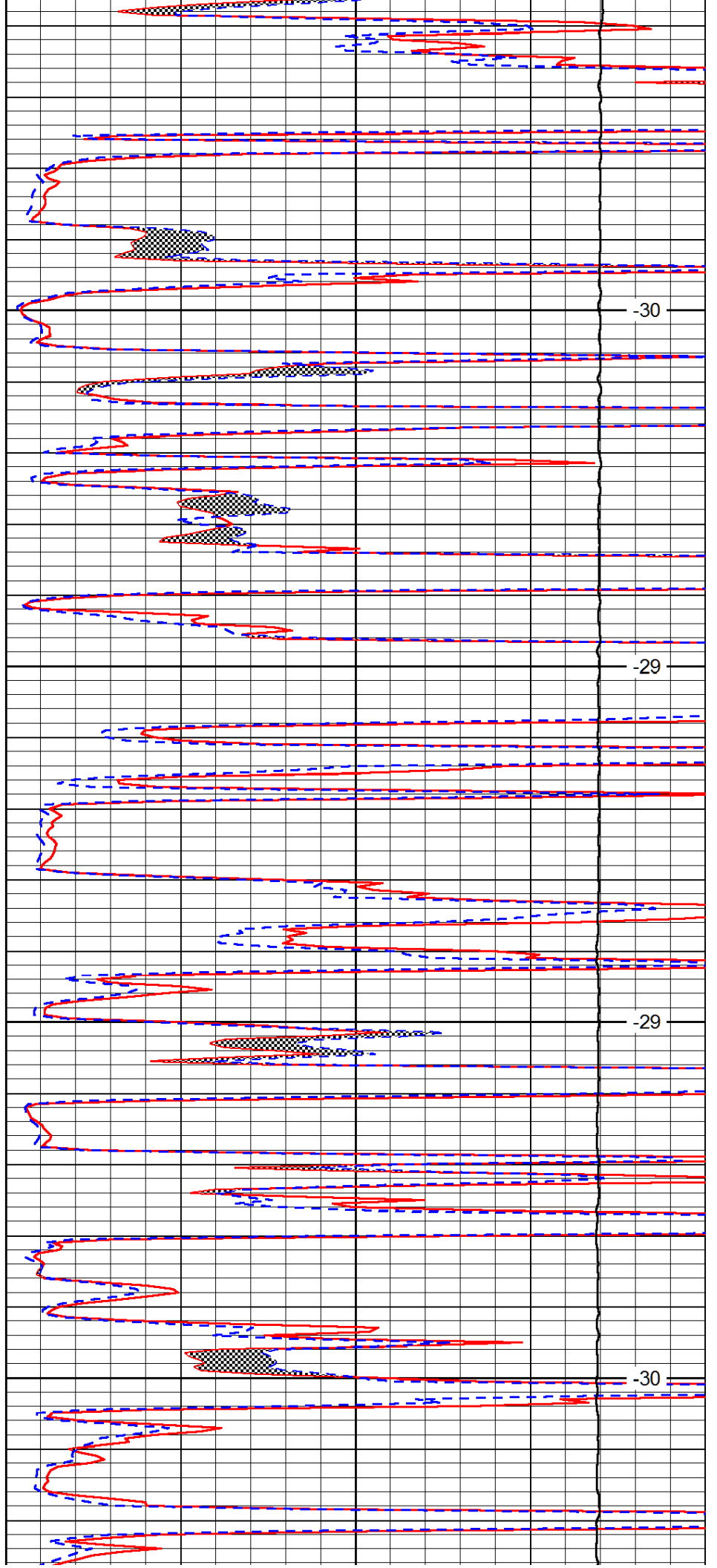


3450

3500

3550

3600

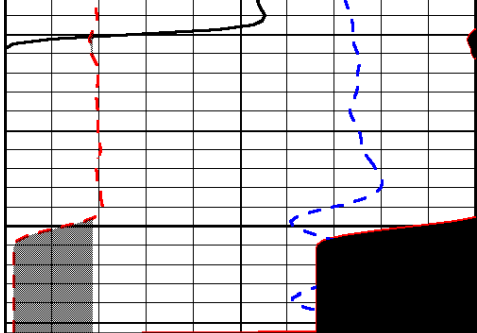


-30

-29

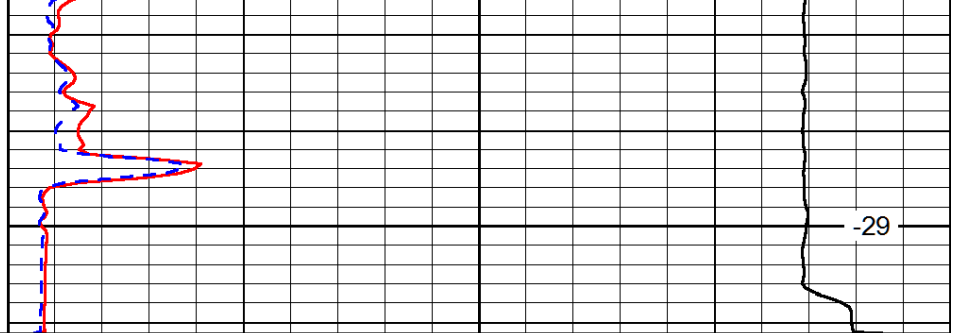
-29

-30



0	Gamma Ray (GAPI)	150
6	MCAL (in)	16
2.875	Mud Cake (in)	7.875
-200	SP (mV)	0

3650



0	Micro Inverse 1 X 1 (Ohm-m)	40
0	Micro Normal 2" (Ohm-m)	40
10000	Line Weight (lb)	0

LSPD  
(ft/min)

-29