

**COMPLETION
& PRODUCTION
SERVICES CO.**

**MICRO
LOG**

Company MULL DRILLING COMPANY, INC.
Well SANTEE #1-17
Field WILDCAT
County TREGO State KANSAS

Company MULL DRILLING COMPANY, INC.
Well SANTEE #1-17
Field WILDCAT
County TREGO
State KANSAS

Location: API #: 15-195-22822
776' FNL & 1118' FNL
SEC 17 TWP 15S RGE 23W
Permanent Datum GROUND LEVEL Elevation 2297
Log Measured From KELLY BUSHING 8' A.G.L.
Drilling Measured From KELLY BUSHING
Other Services
CDL/CNL/PE
DIL/MEL
Elevation
K.B. 2305
D.F.
G.L. 2297

Date	11-16-12
Run Number	TWO
Depth Driller	4375
Depth Logger	4374
Bottom Logged Interval	4356
Top Log Interval	3600
Casing Driller	233
Casing Logger	233
Bit Size	7.875
Type Fluid in Hole	CHEMICAL MUD
Density / Viscosity	9.1 / 54
pH / Fluid Loss	9.0 / 10.0
Source of Sample	FLOWLINE
Rim @ Meas. Temp	0.60 @ 74F
Rmf @ Meas. Temp	0.45 @ 74F
Rmc @ Meas. Temp	0.72 @ 74F
Source of Rmf / Rmc	MEASURED
Rim @ BHT	.380 @ 118F
Time Circulation Stopped	2 HOURS
Time Logger on Bottom	10:00 P.M.
Maximum Recorded Temperature	118F
Equipment Number	860
Location	HAYS, KS.
Recorded By	RUPP
Witnessed By	KEVIN KESSLER

<<< Fold Here >>>

All interpretations are opinions based on inferences from electrical or other measurements and we cannot and do not guarantee the accuracy or correctness of any interpretation, and we shall not, except in the case of gross or willful negligence on our part, be liable or responsible for any loss, costs, damages, or expenses incurred or sustained by anyone resulting from any interpretation made by any of our officers, agents or employees. These interpretations are also subject to our general terms and conditions set out in our current Price Schedule.

Comments

NABORS COMPLETION & PRODUCTION CO.
THANK YOU FOR YOUR BUSINESS
DIRECTIONS: WAKEENEY, S TO RD. "AA", 1/2W, S INTO.



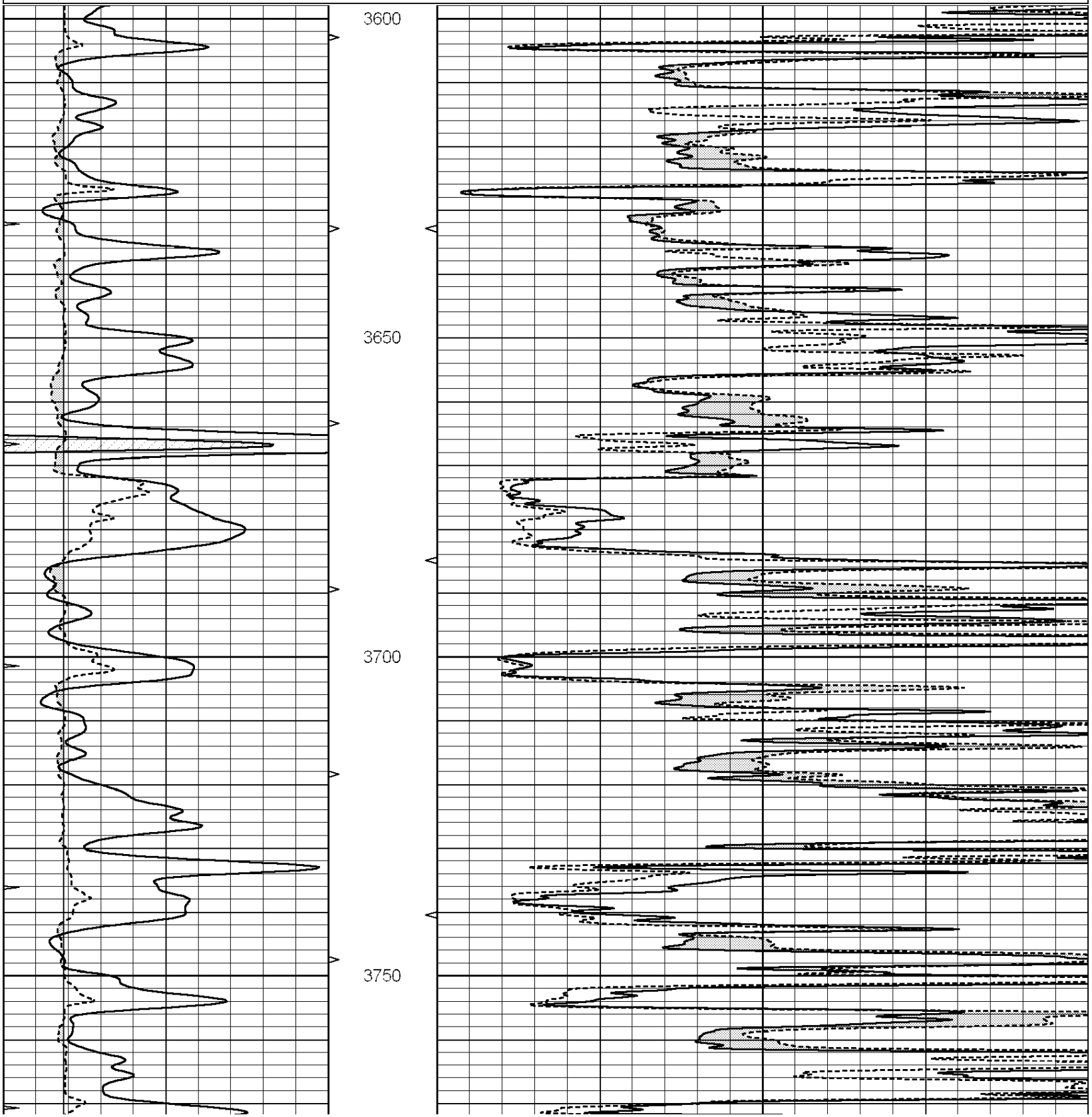
**COMPLETION
& PRODUCTION**

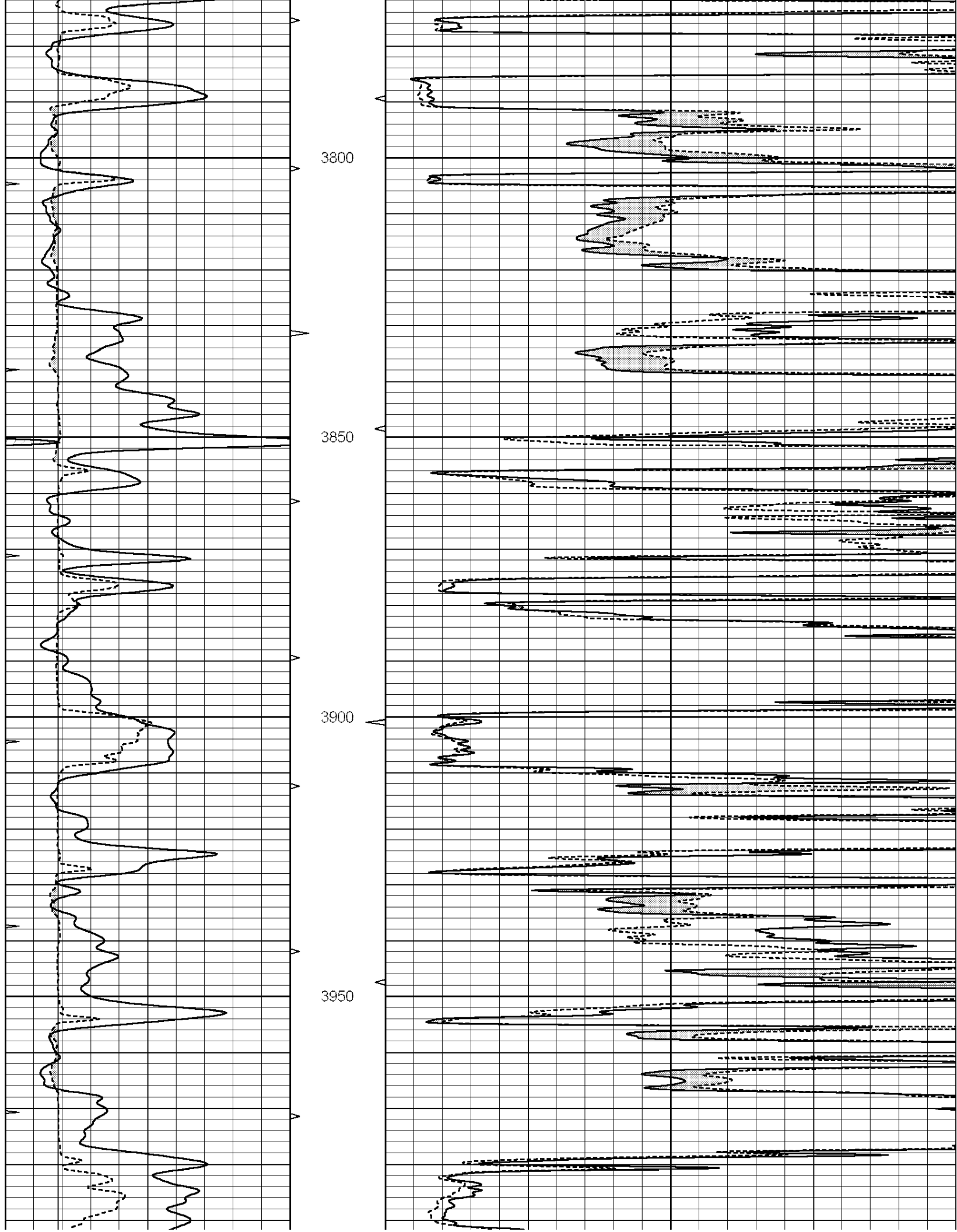
MAIN SECTION

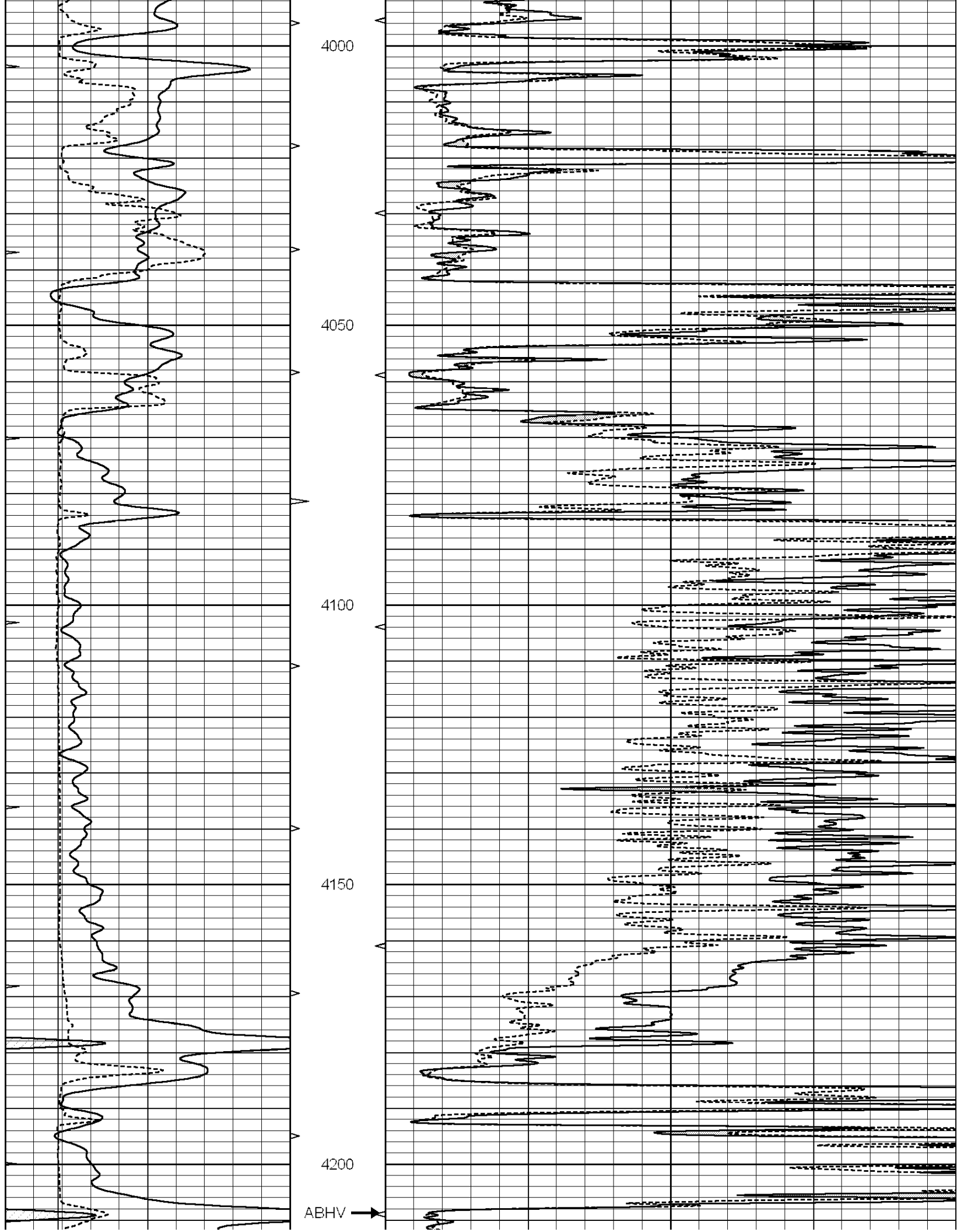
Database File: 009949pdn.db
 Dataset Pathname: pass5.2
 Presentation Format: micro
 Dataset Creation: Sat Nov 17 01:42:48 2012
 Charted by: Depth in Feet scaled 1:240

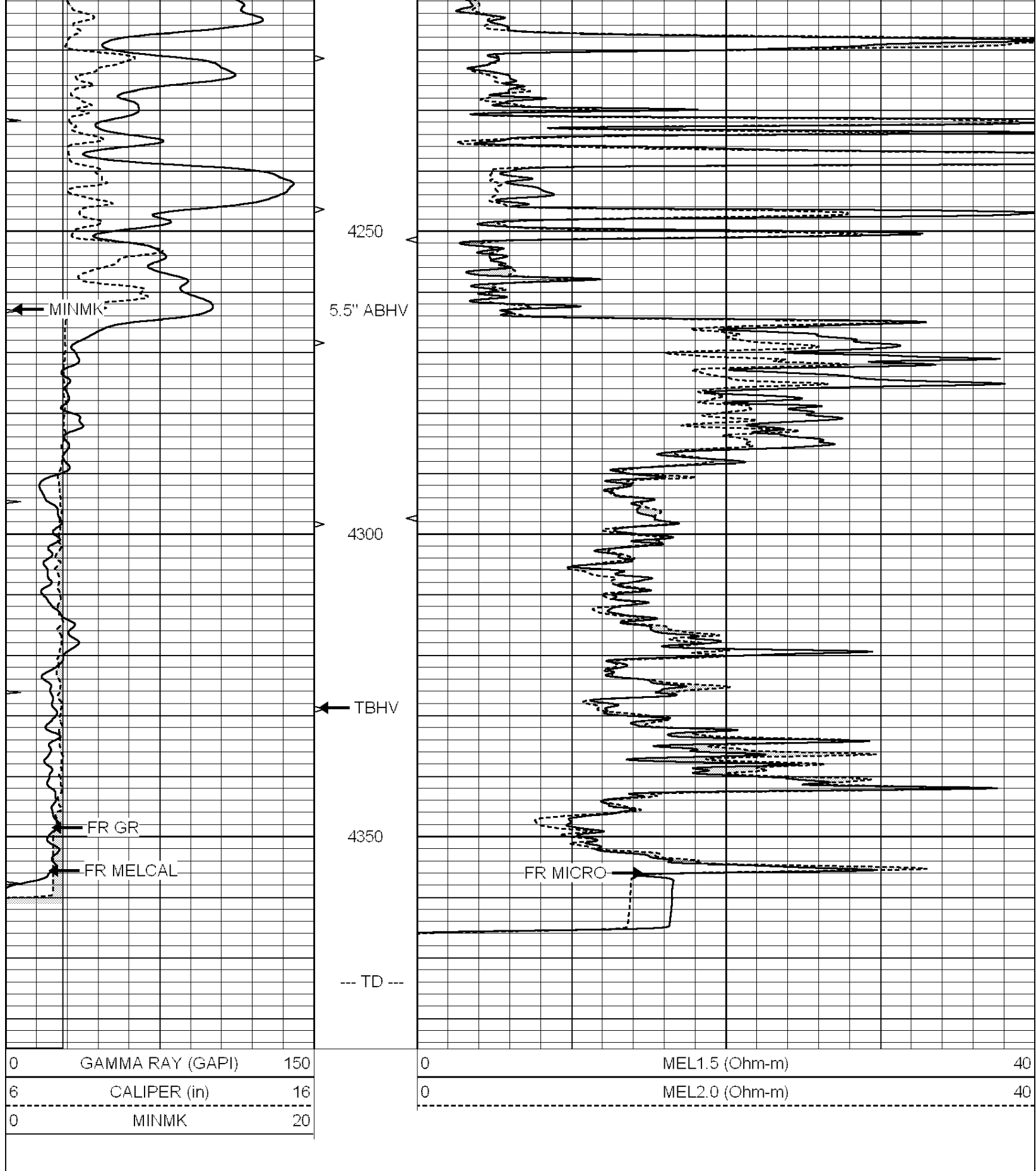
0	GAMMA RAY (GAPI)	150
6	CALIPER (in)	16
0	MINMK	20

0	MEL1.5 (Ohm-m)	40
0	MEL2.0 (Ohm-m)	40







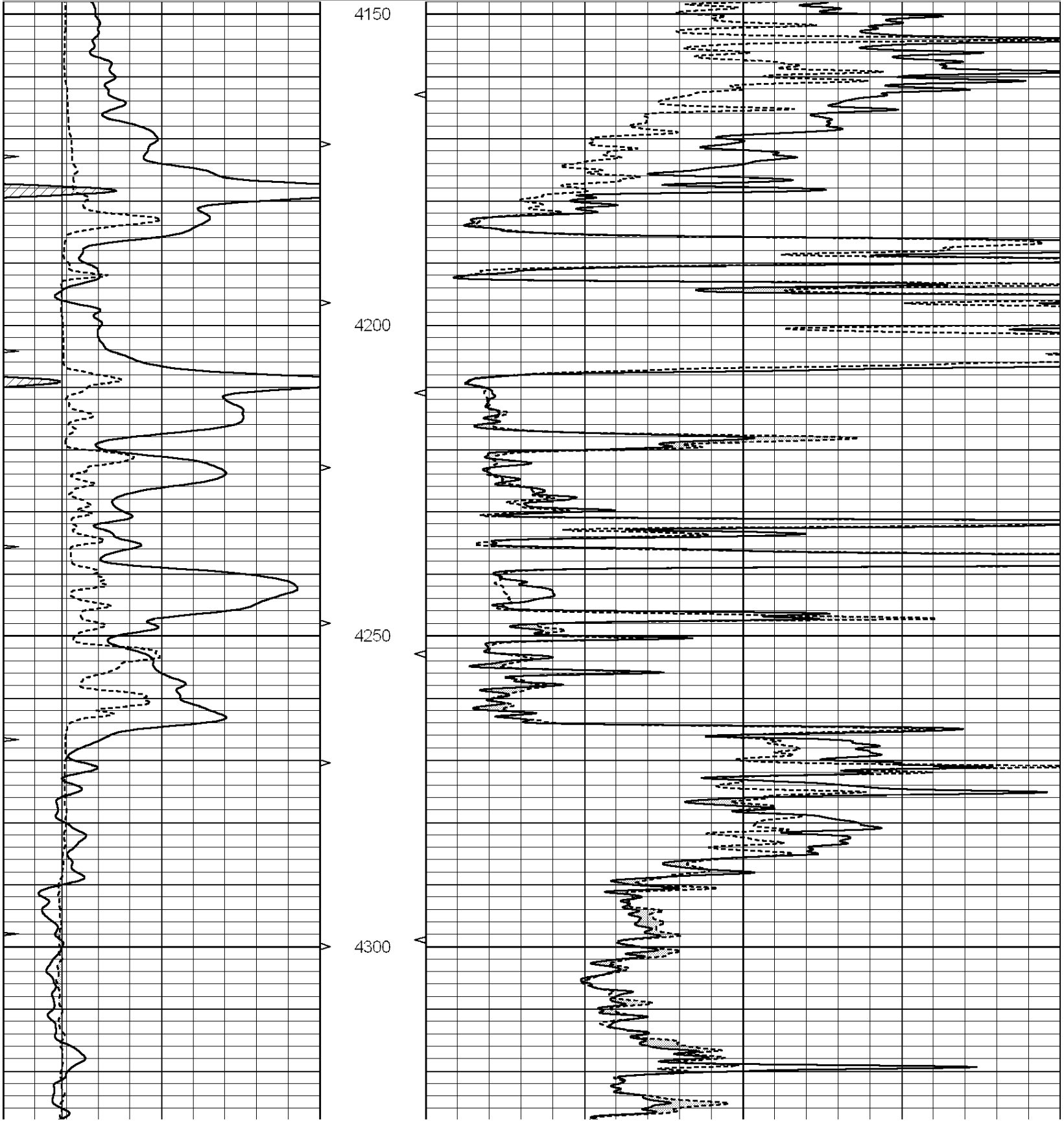


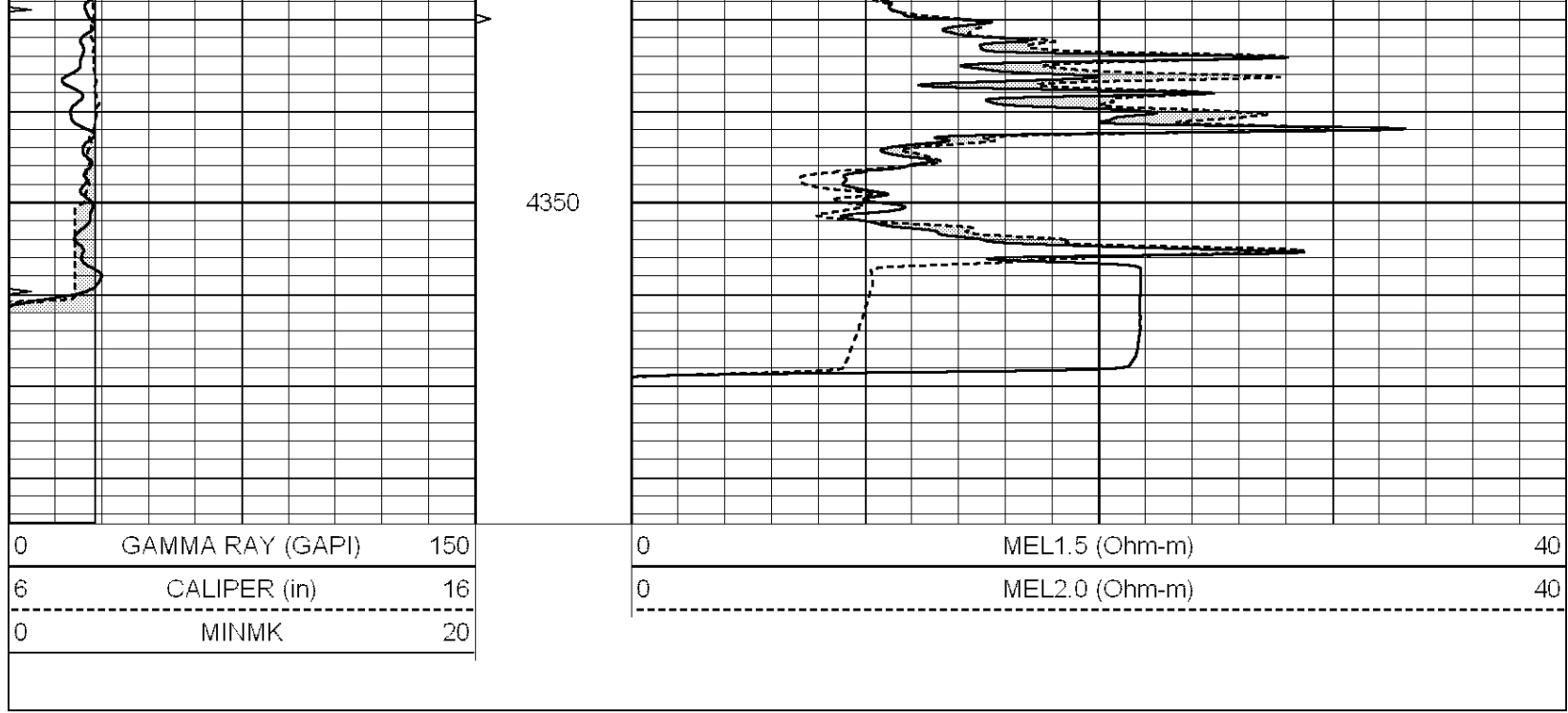
Database File: 009949pdm.db
 Dataset Pathname: pass4.2
 Presentation Format: micro
 Dataset Creation: Sat Nov 17 01:50:57 2012
 Charted by: Depth in Feet scaled 1:240

0	GAMMA RAY (GAPI)	150
6	CALIPER (in)	16

0	MINMK	20

0	MEL1.5 (Ohm-m)	40
0	MEL2.0 (Ohm-m)	40





Calibration Report

Database File: 009949pdn.db
 Dataset Pathname: pass5.2
 Dataset Creation: Sat Nov 17 01:42:48 2012

MICRO Calibration Report

Serial Number:	MICRO4	
Tool Model:	PROBE	
Performed:	Thu Nov 15 21:25:26 2012	
Caliper Calibration:	Gain=1.212	Offset=1.048
References	Low Cal	High Cal
Readings	7.650	11.000
	5.449	8.214
1.5" Calibration:	Gain=46.000	Offset=-1.000
References	Low Cal	High Cal
Readings	0.000	20.000
	0.009	1.541
2" Calibration:	Gain=45.000	Offset=-0.500
References	Low Cal	High Cal
Readings	0.000	20.000
	0.004	1.198

Gamma Ray Calibration Report

Serial Number:	GR5	
Tool Model:	OPEN	
Performed:	Sat Nov 17 00:22:54 2012	
Calibrator Value:	1.0	GAPI
Background Reading:	0.0	cps
Calibrator Reading:	1.0	cps
Sensitivity:	0.7500	GAPI/cps