

**COMPLETION
& PRODUCTION
SERVICES CO.**

**SONIC
LOG**

Company MULL DRILLING COMPANY, INC.
Well SANTEE #1-17
Field WILDCAT
County TREGO State KANSAS

Company MULL DRILLING COMPANY, INC.
Well SANTEE #1-17
Field WILDCAT
County TREGO
State KANSAS

Location: API #: 15-195-22822
776' FNL & 1118' FNL
SEC 17 TWP 15S RGE 23W
Permanent Datum GROUND LEVEL Elevation 2297
Log Measured From KELLY BUSHING 8' A.G.L.
Drilling Measured From KELLY BUSHING
Other Services
CDL/CNL/PE
DIL/MEL
Elevation
K.B. 2305
D.F.
G.L. 2297

Date	11-16-12
Run Number	TWO
Depth Driller	4375
Depth Logger	4374
Bottom Logged Interval	4366
Top Log Interval	230
Casing Driller	233
Casing Logger	233
Bit Size	7.875
Type Fluid in Hole	CHEMICAL MUD
Density / Viscosity	9.1 / 54
pH / Fluid Loss	9.0 / 10.0
Source of Sample	FLOWLINE
Rim @ Meas. Temp	0.60 @ 74F
Rmf @ Meas. Temp	0.45 @ 74F
Rmc @ Meas. Temp	0.72 @ 74F
Source of Rmf / Rmc	MEASURED
Rim @ BHT	.380 @ 118F
Time Circulation Stopped	2 HOURS
Time Logger on Bottom	10:00 P.M.
Maximum Recorded Temperature	118F
Equipment Number	860
Location	HAYS, KS.
Recorded By	RUPP
Witnessed By	KEVIN KESSLER

<<< Fold Here >>>

All interpretations are opinions based on inferences from electrical or other measurements and we cannot and do not guarantee the accuracy or correctness of any interpretation, and we shall not, except in the case of gross or willful negligence on our part, be liable or responsible for any loss, costs, damages, or expenses incurred or sustained by anyone resulting from any interpretation made by any of our officers, agents or employees. These interpretations are also subject to our general terms and conditions set out in our current Price Schedule.

Comments

NABORS COMPLETION & PRODUCTION CO.
THANK YOU FOR YOUR BUSINESS
DIRECTIONS: WAKEENEY, S TO RD. "AA", 1/2W, S INTO.

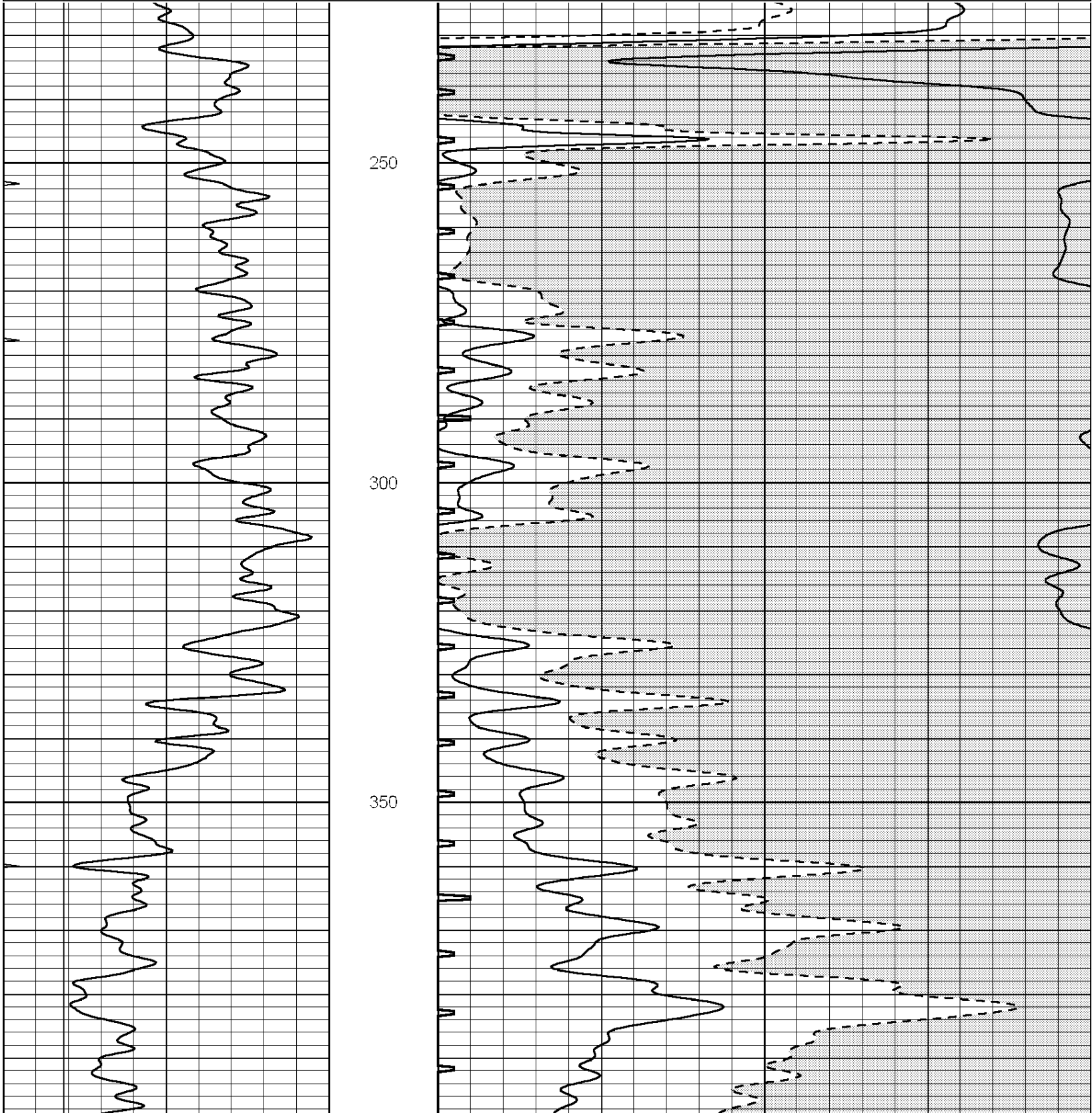


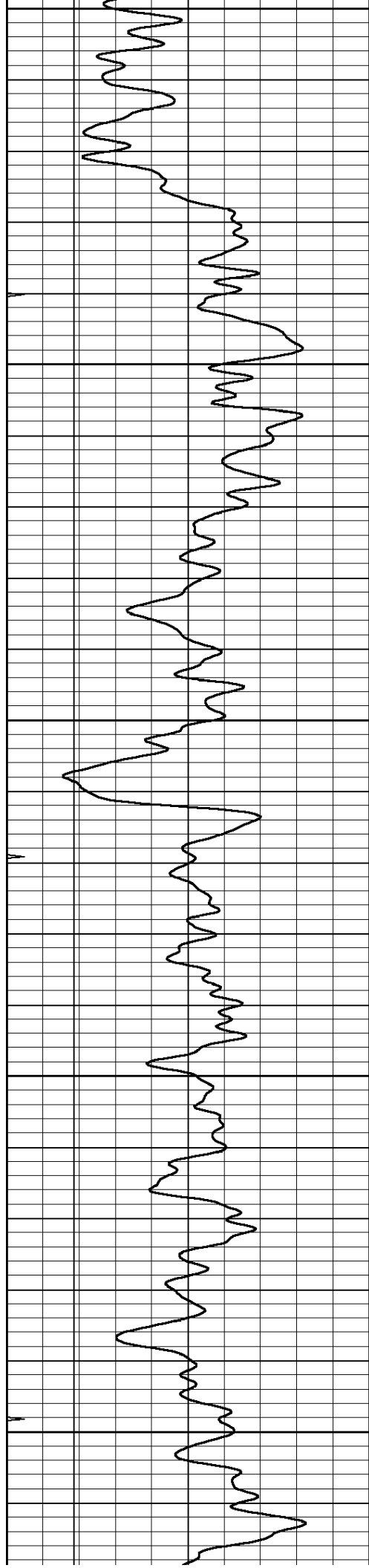
**COMPLETION
& PRODUCTION**

MAIN SECTION

Database File: 009949pdm.db
 Dataset Pathname: pass5.2
 Presentation Format: slt
 Dataset Creation: Sat Nov 17 01:42:48 2012
 Charted by: Depth in Feet scaled 1:240

6	DCAL (in)	16	ABHV	140	DELTA TIME (usec/ft)	40
0	GAMMA RAY (GAPI)	150	10 (ft3)	0	SONIC POROSITY (pu)	-10
0	MINMK	20	TBHV	0	ITT (msec)	20
			0 (ft3)	10		





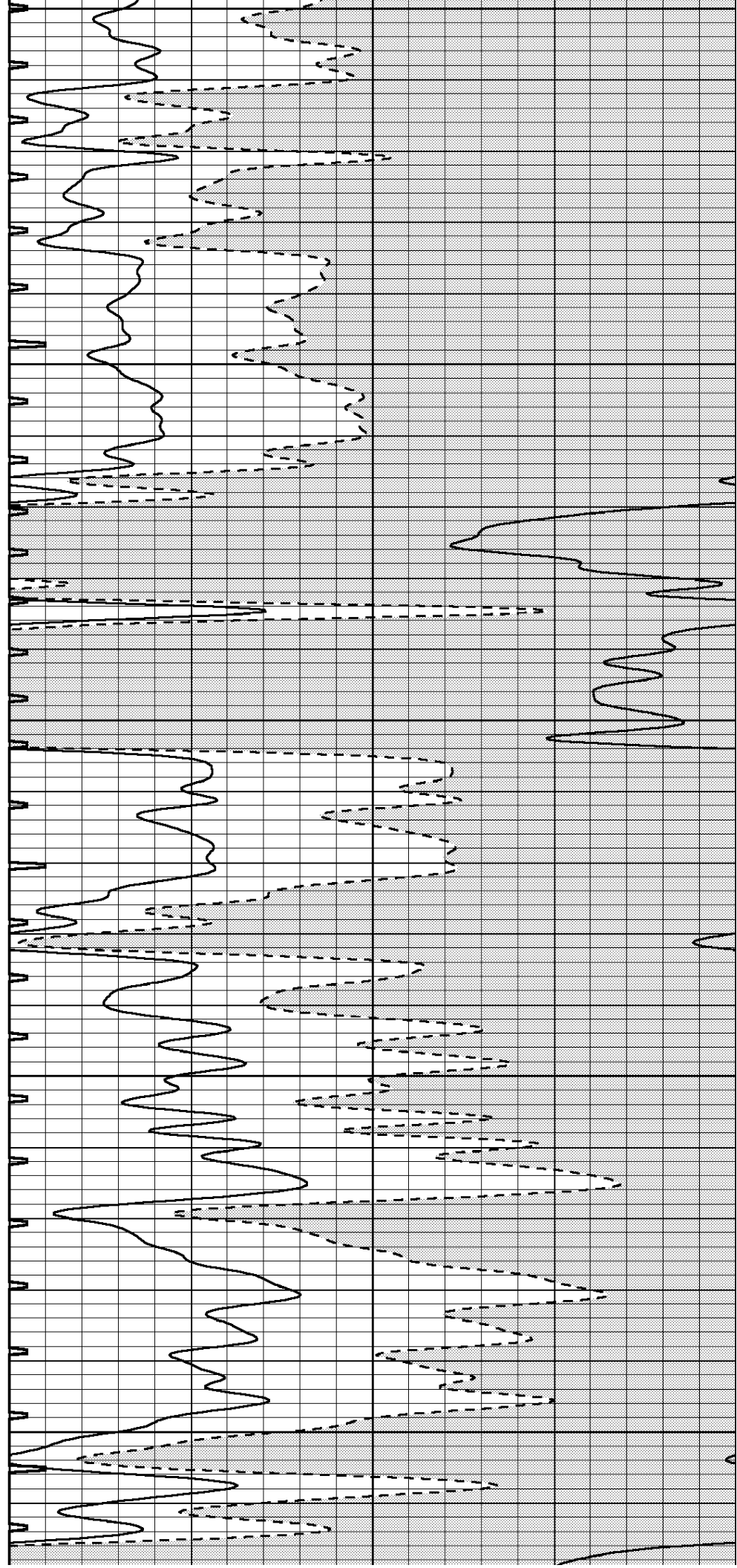
400

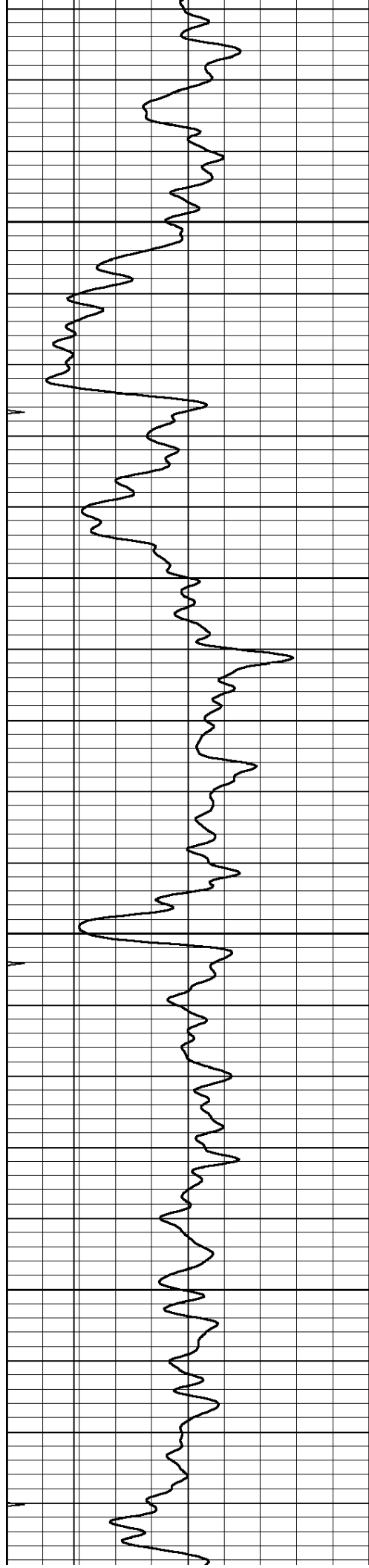
450

500

550

600



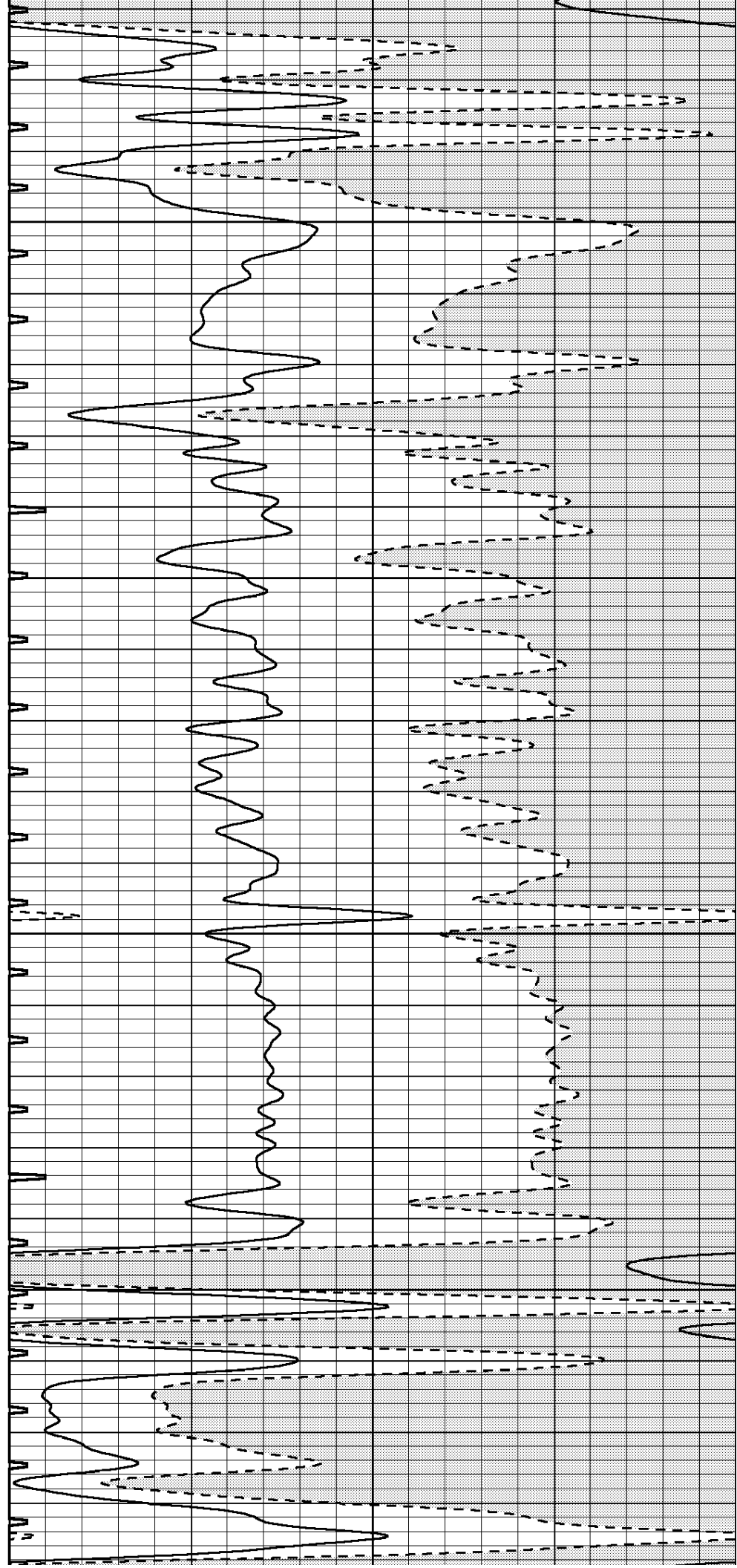


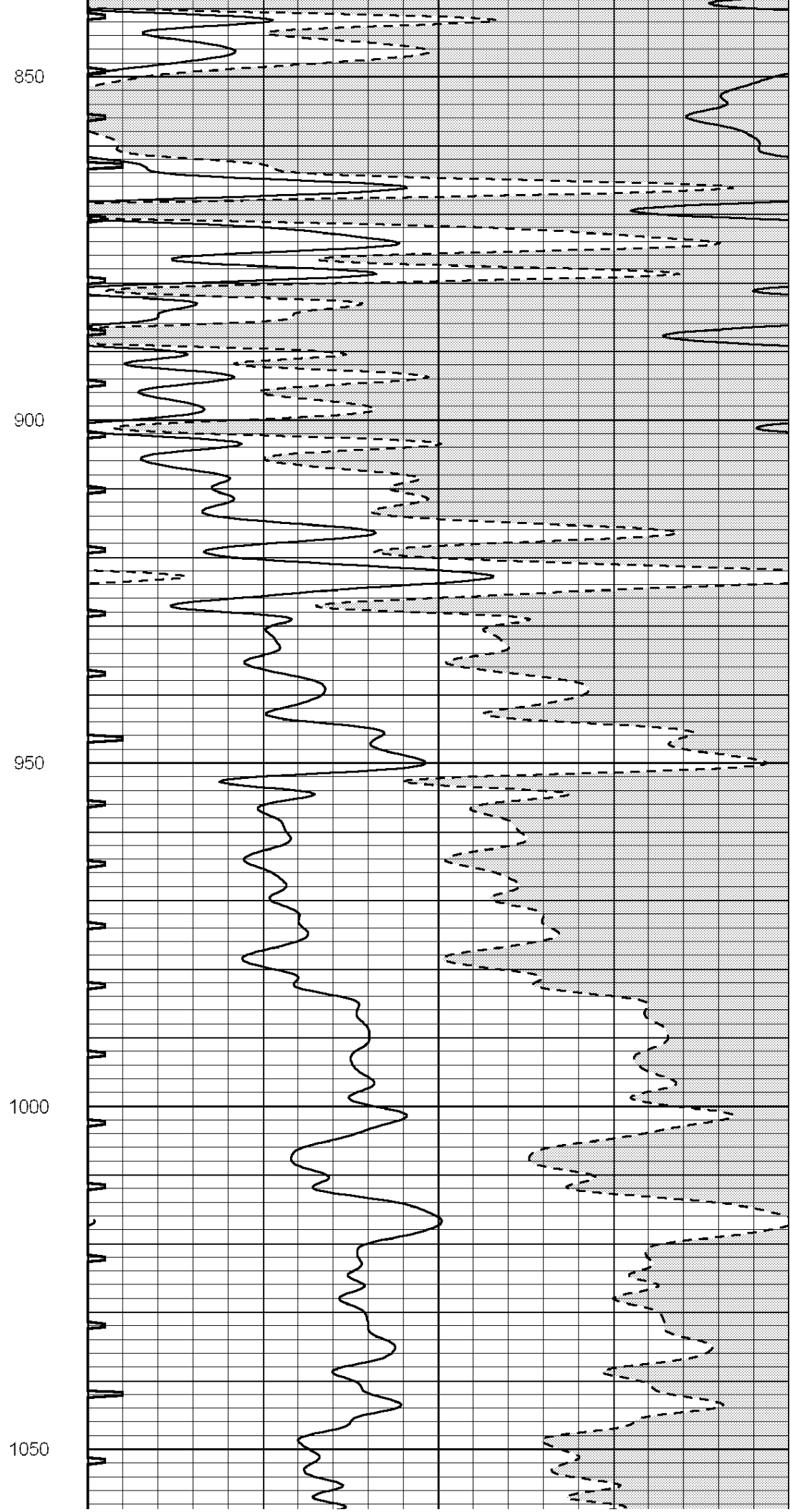
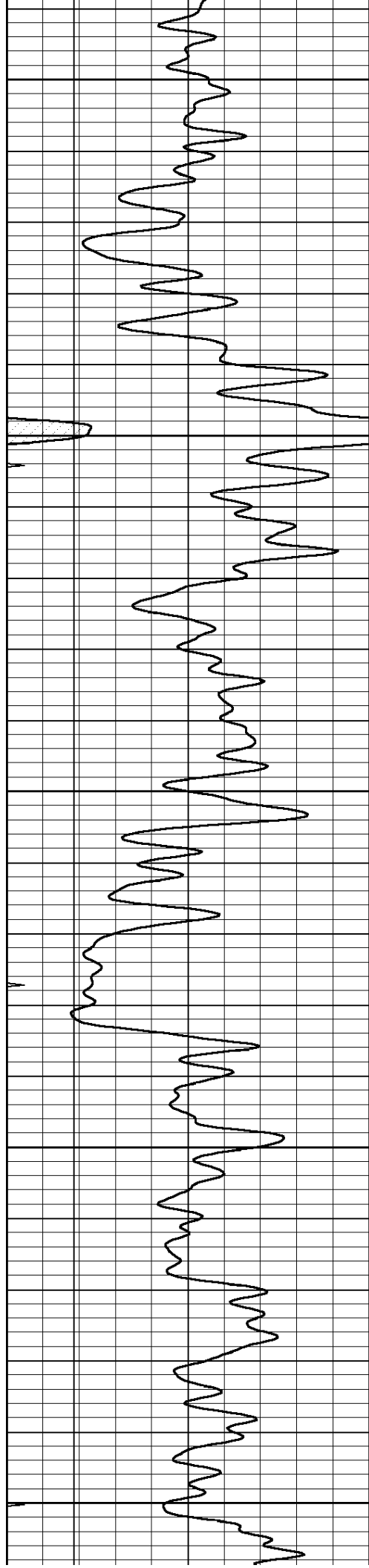
650

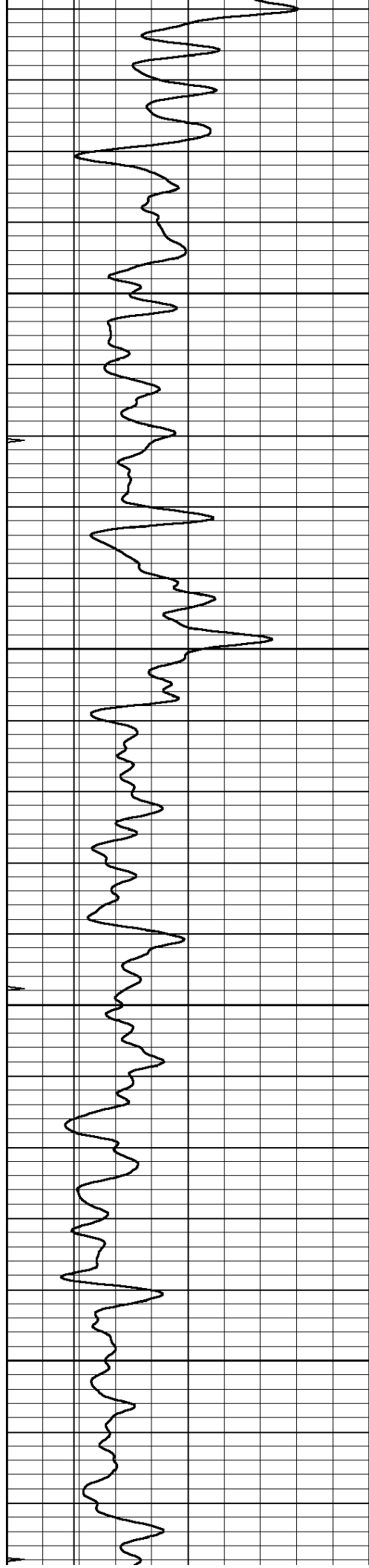
700

750

800





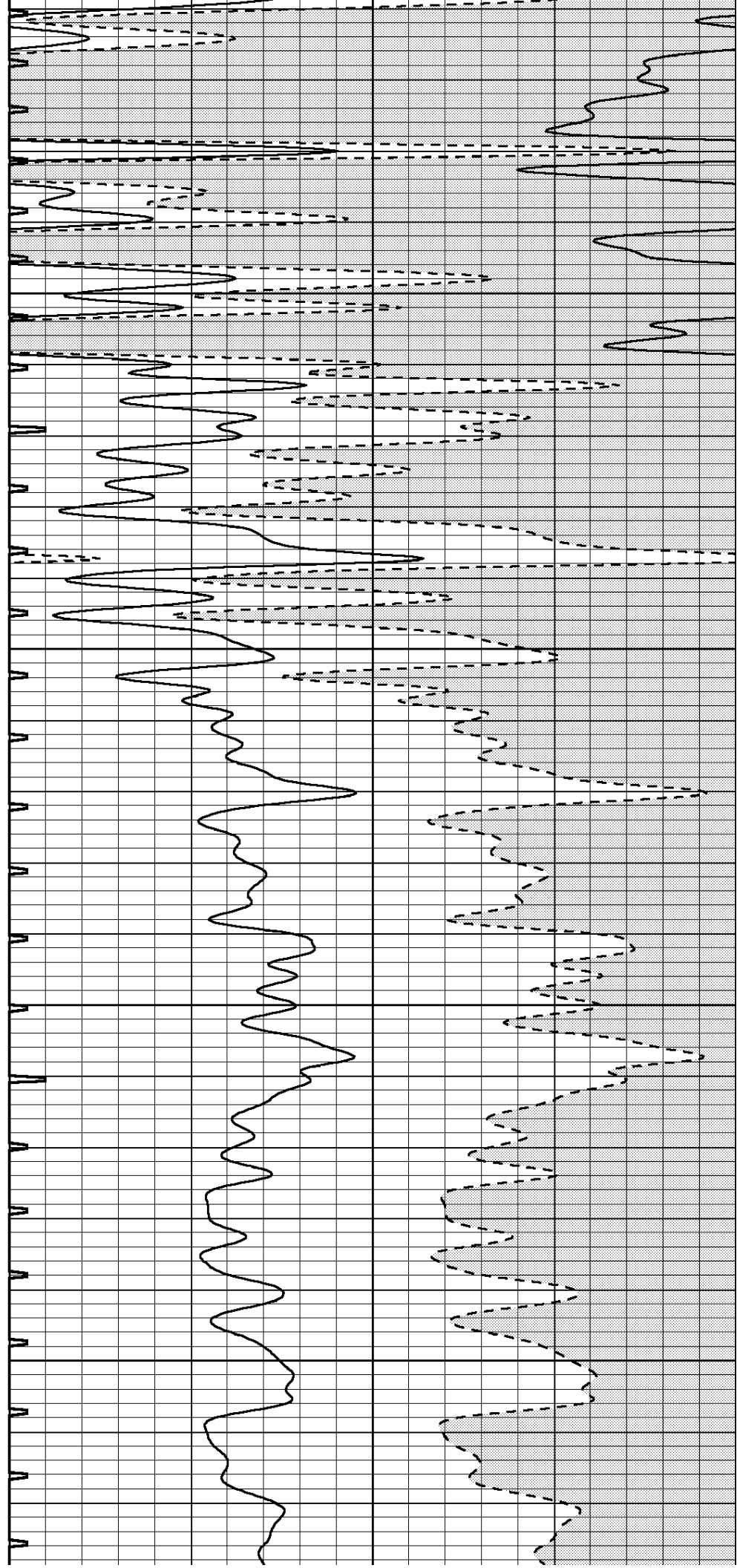


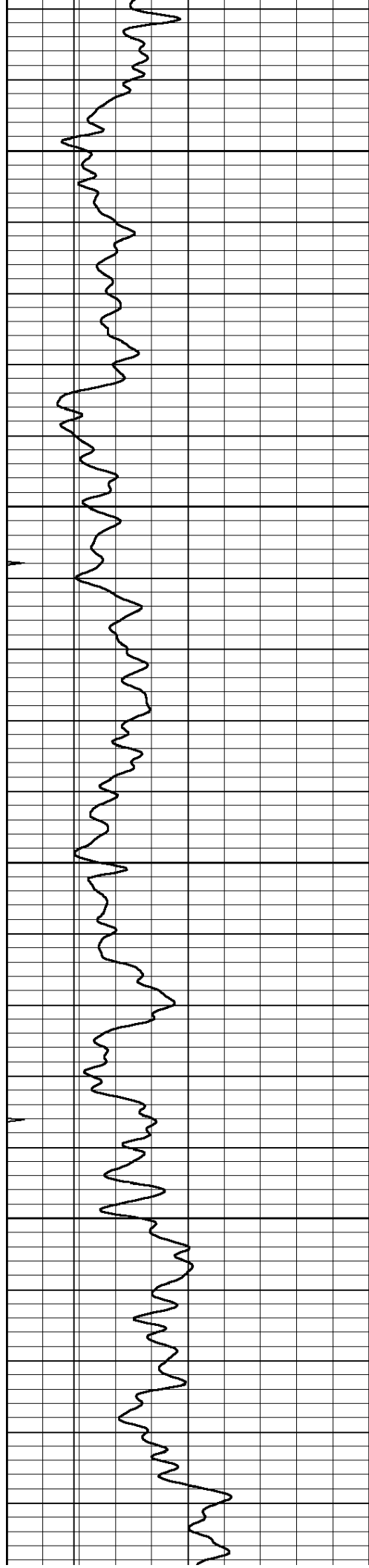
1100

1150

1200

1250



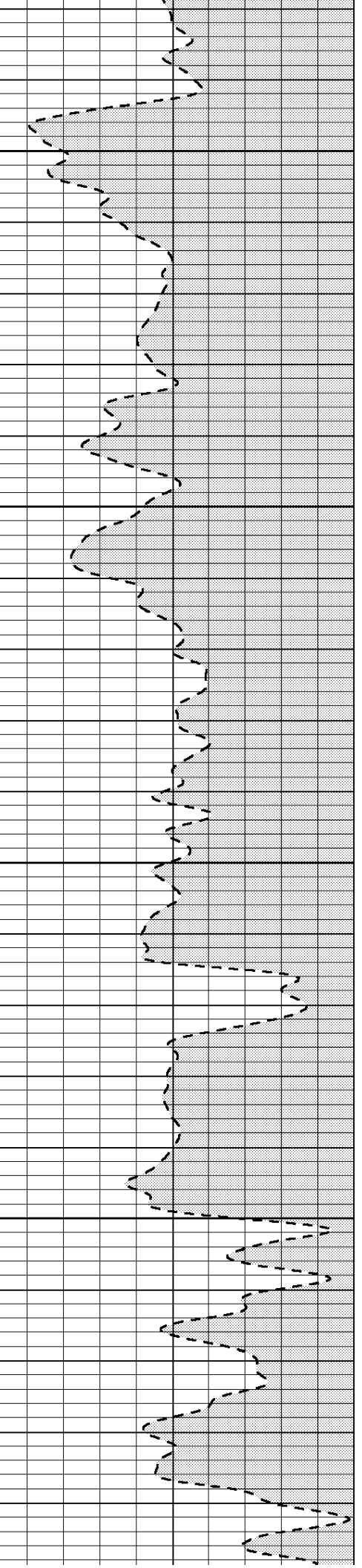
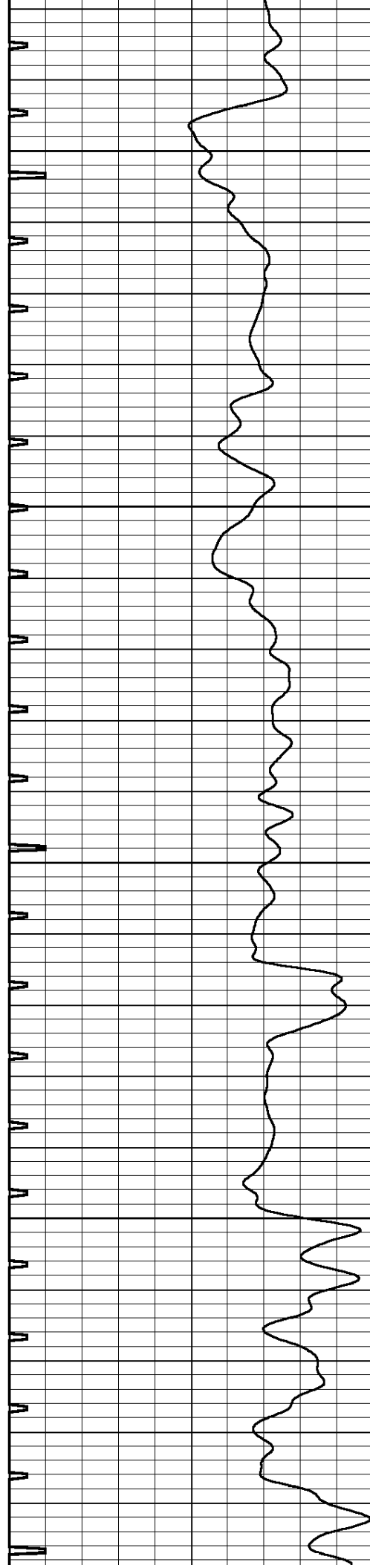


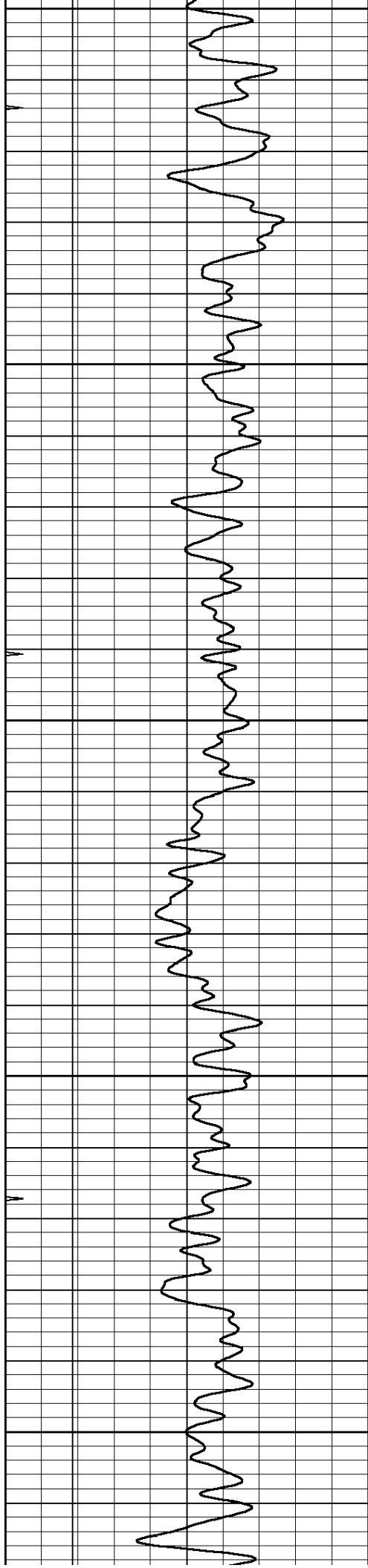
1300

1350

1400

1450





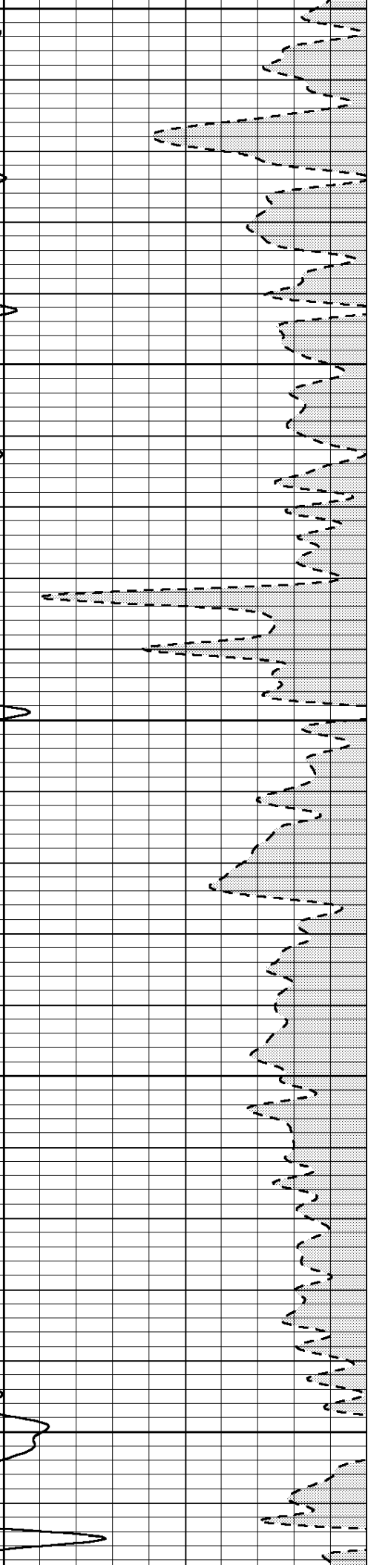
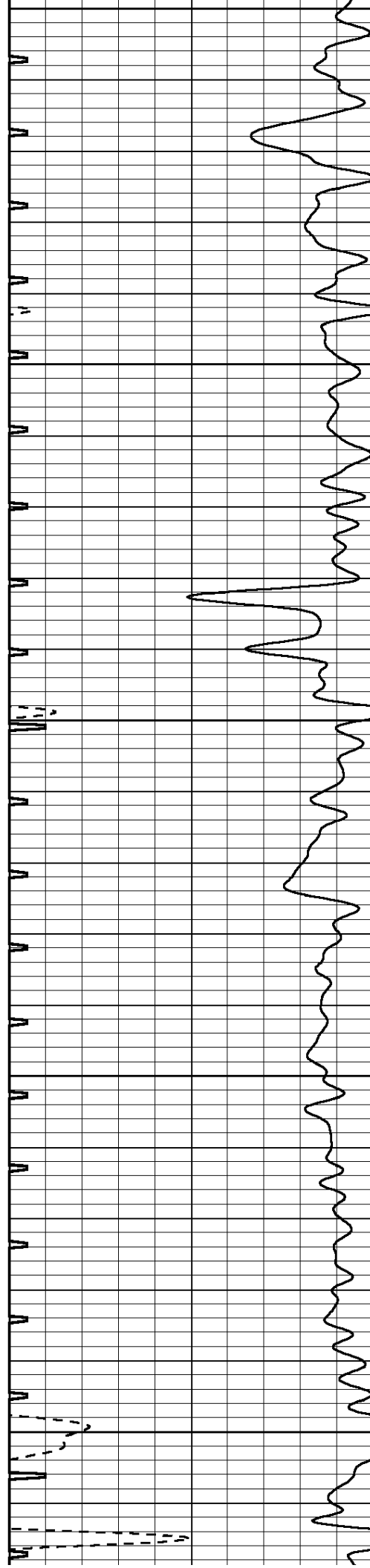
1500

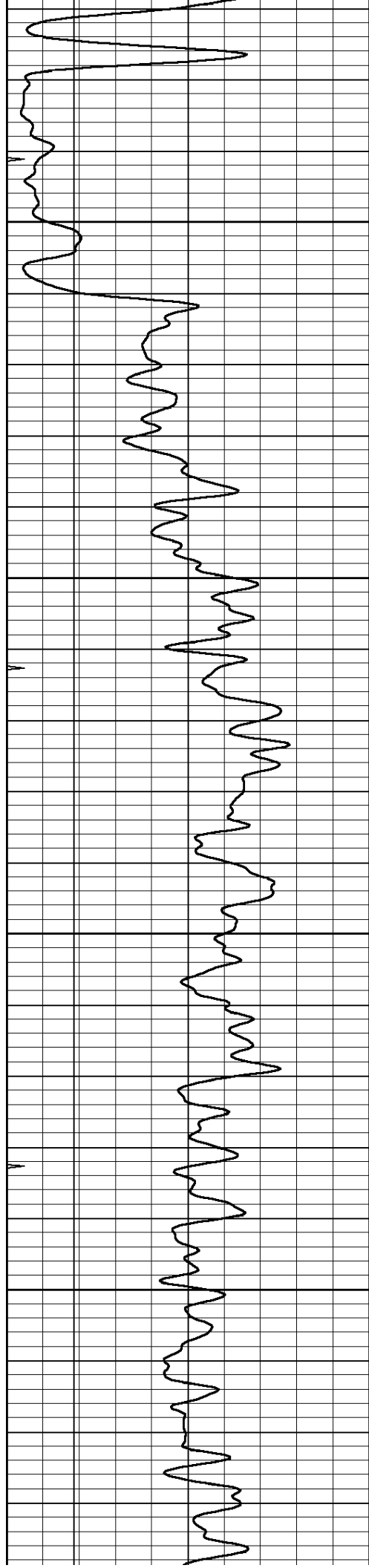
1550

1600

1650

1700



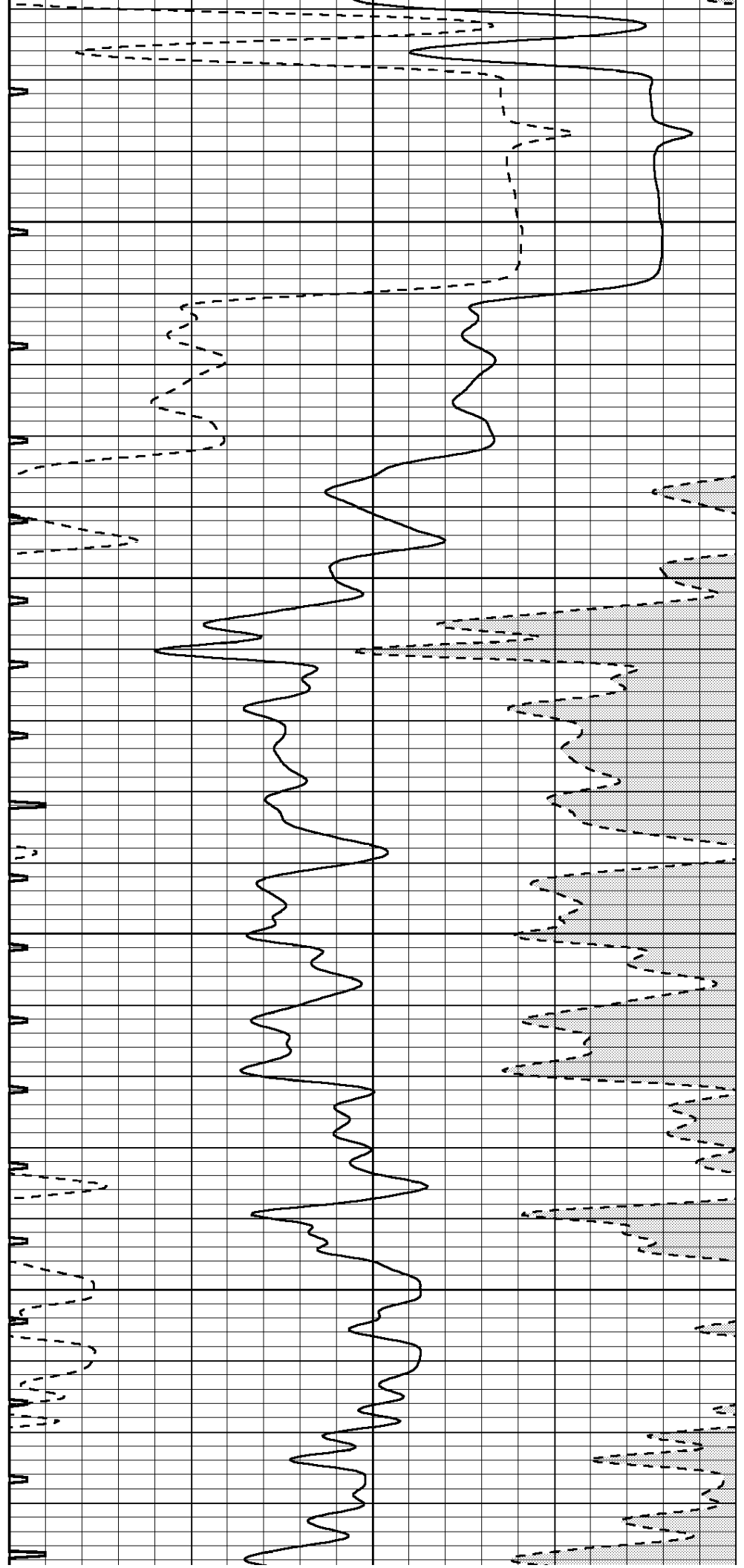


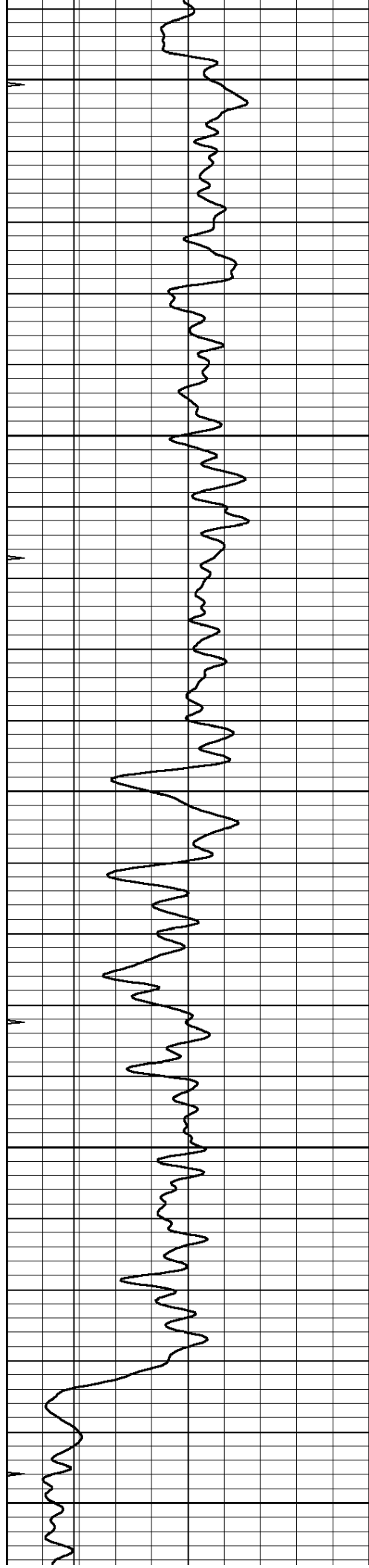
1750

1800

1850

1900





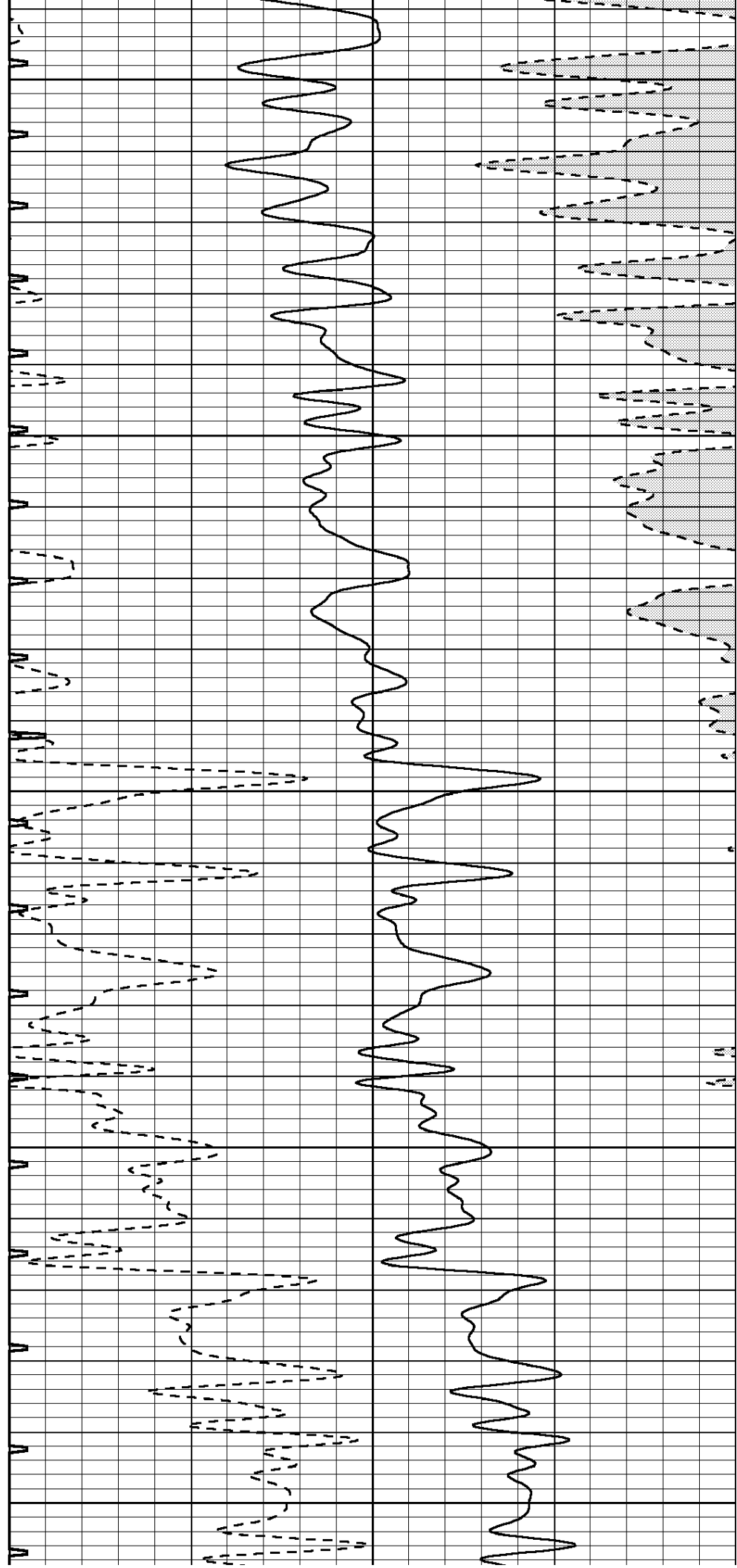
1950

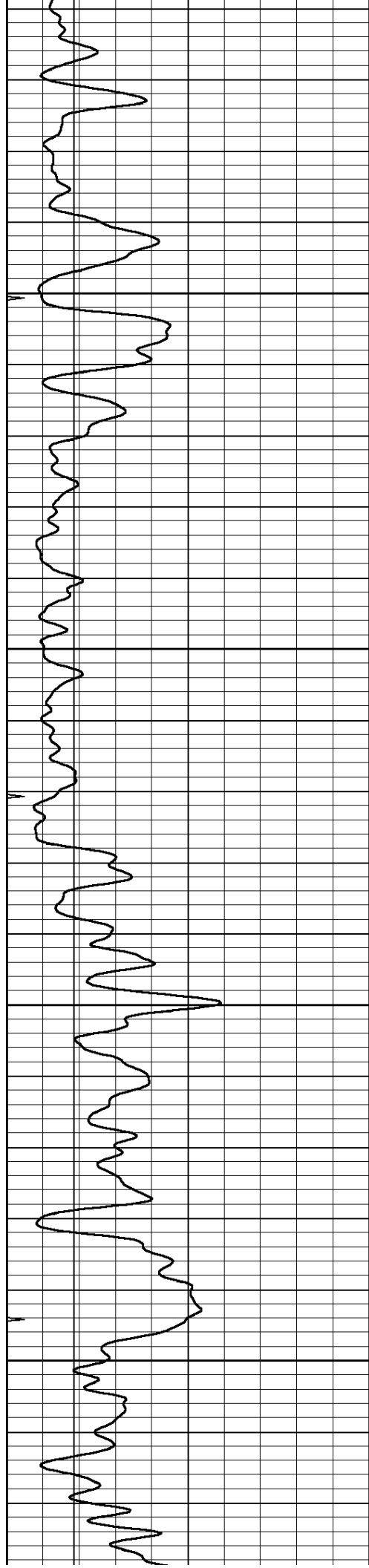
2000

2050

2100

2150



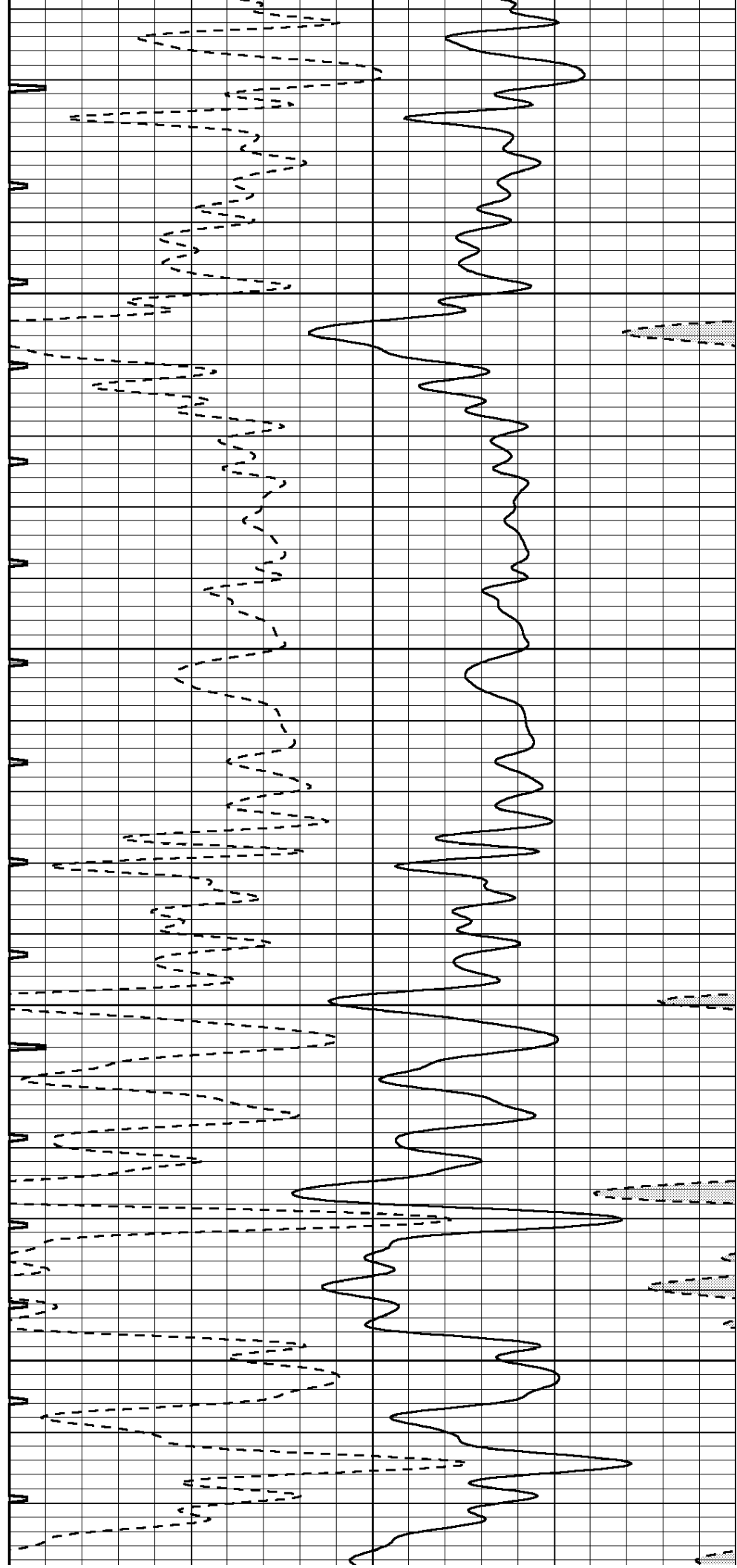


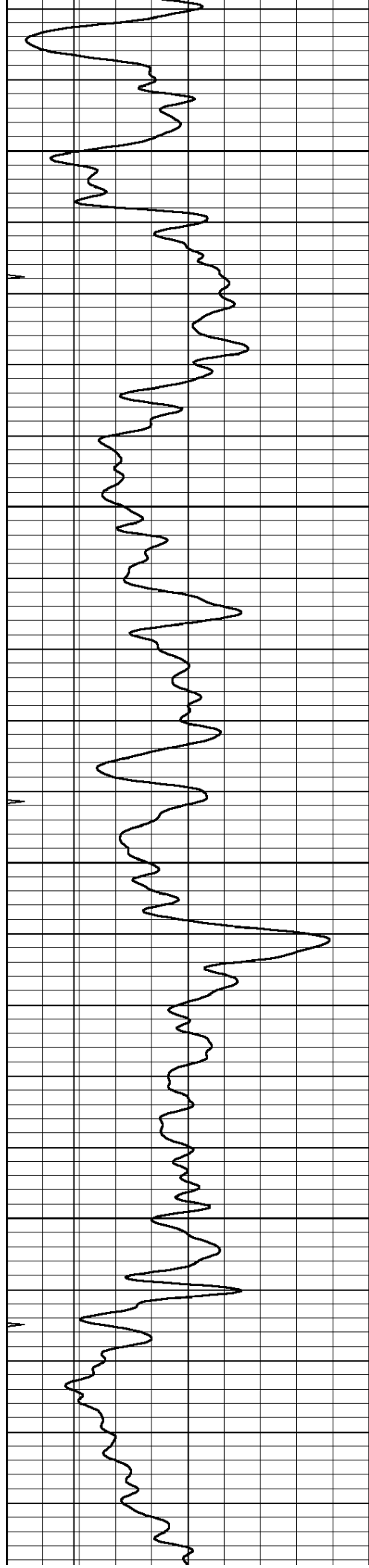
2200

2250

2300

2350



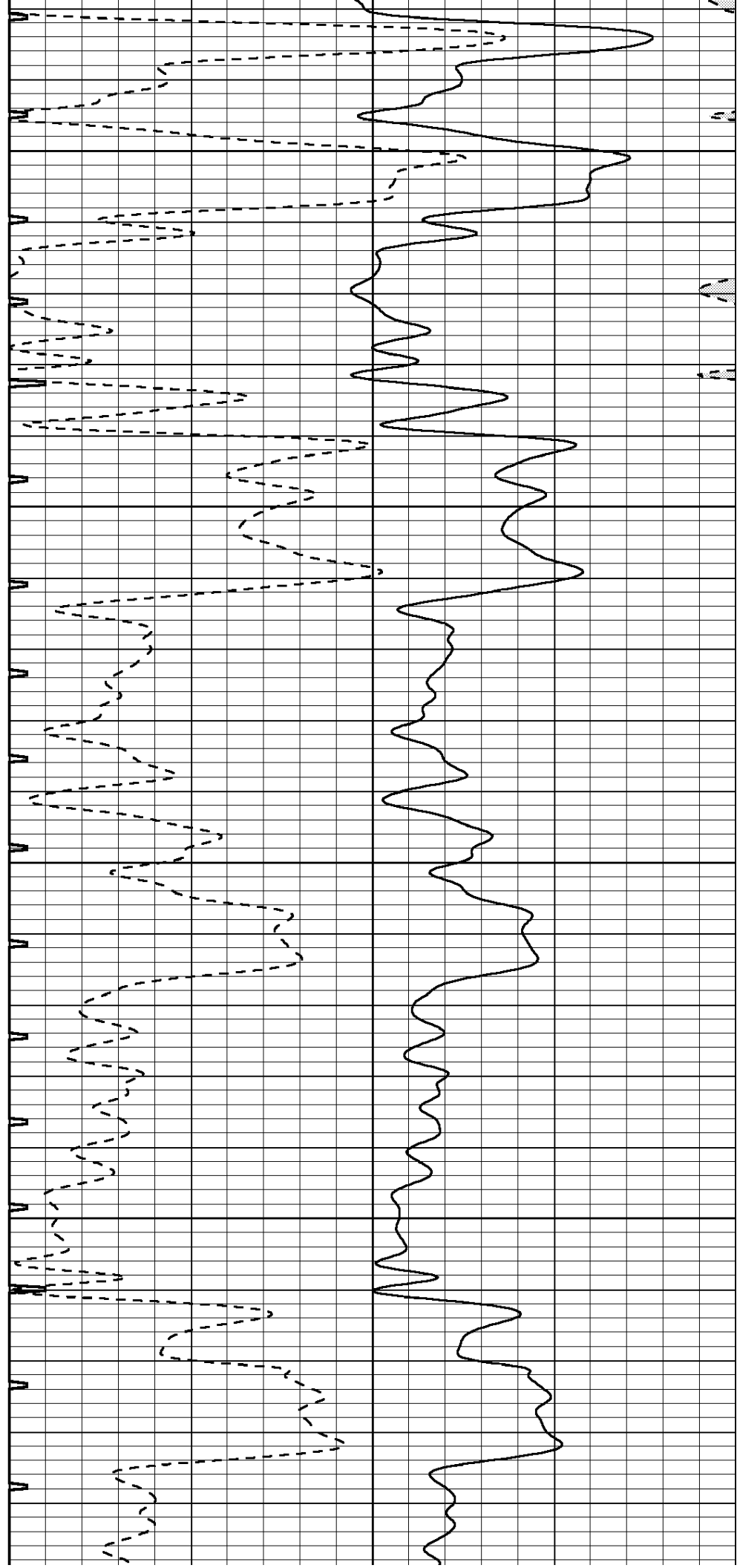


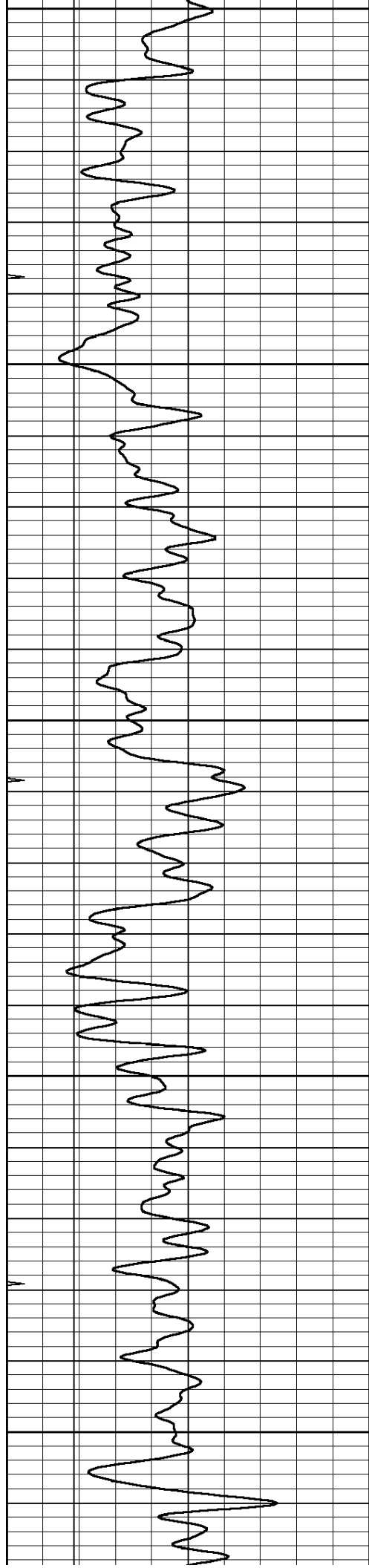
2400

2450

2500

2550





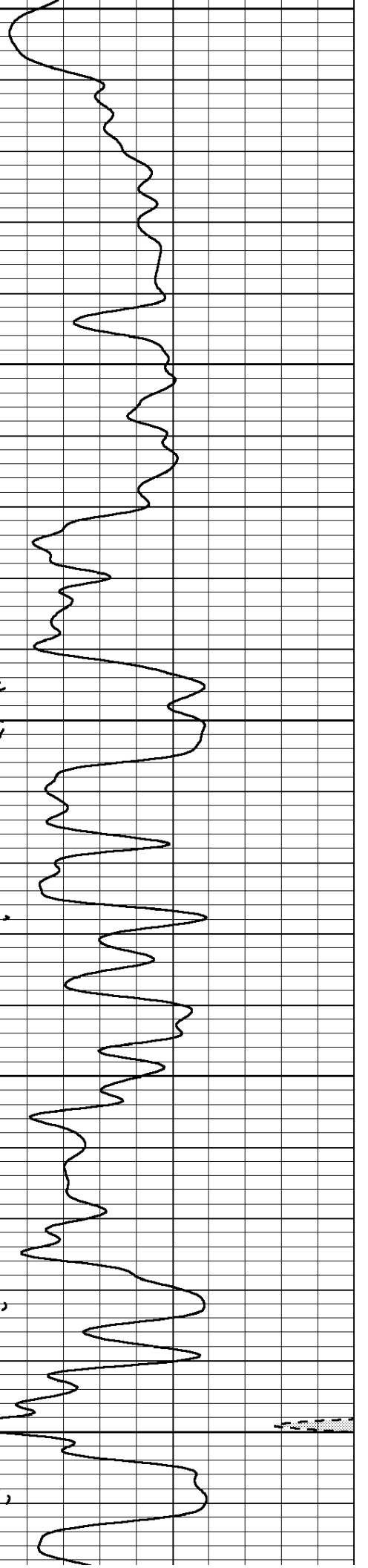
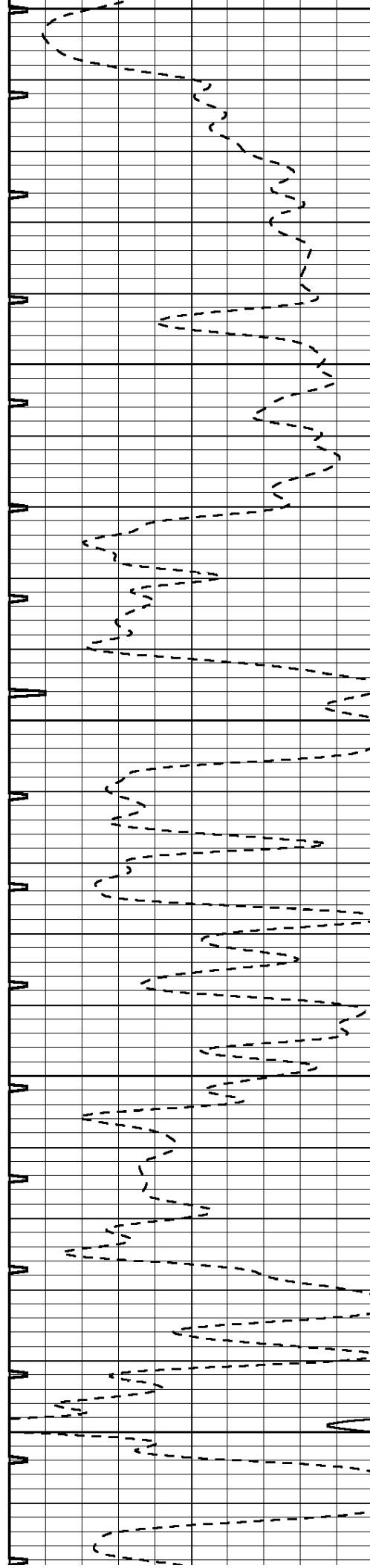
2600

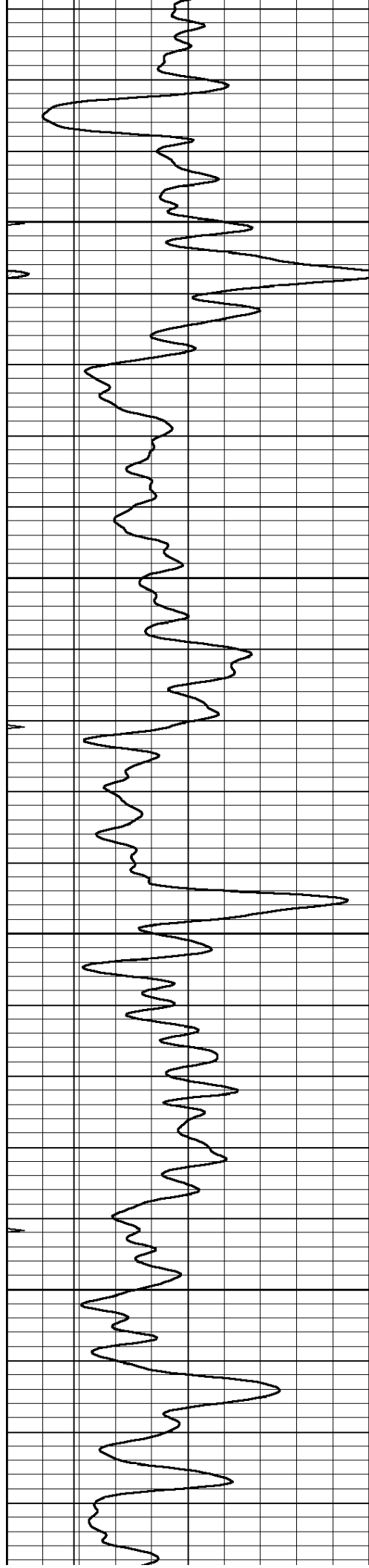
2650

2700

2750

2800



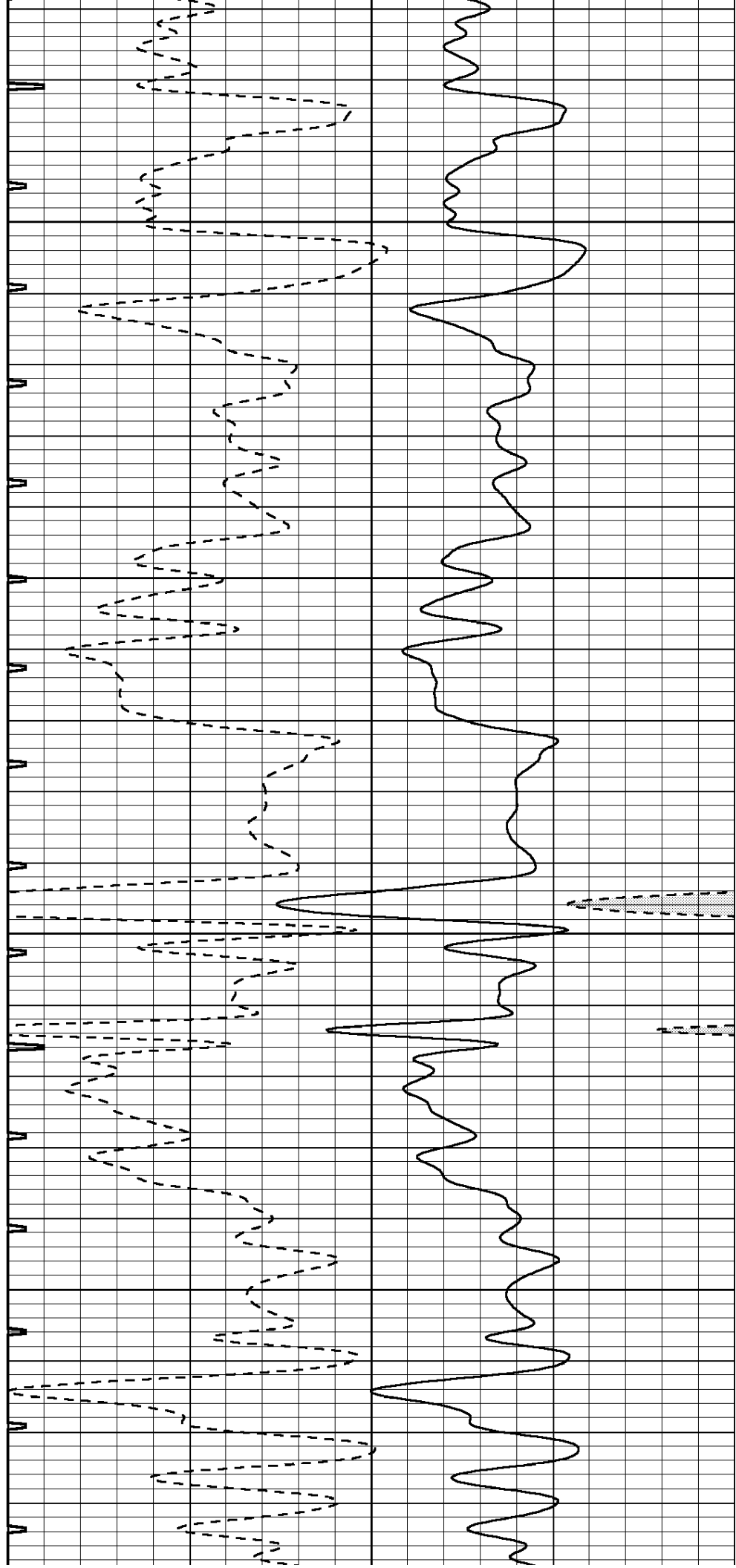


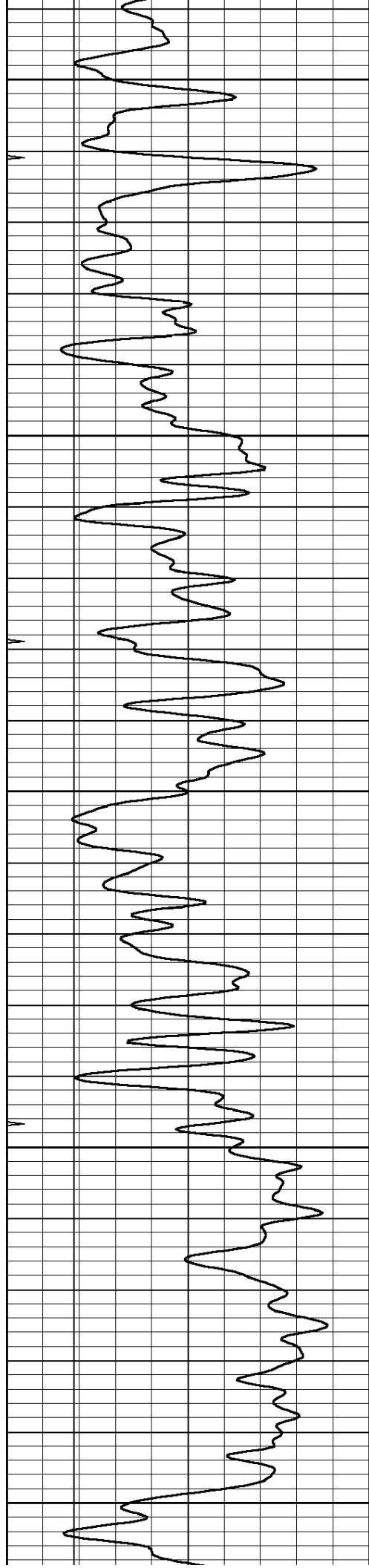
2850

2900

2950

3000





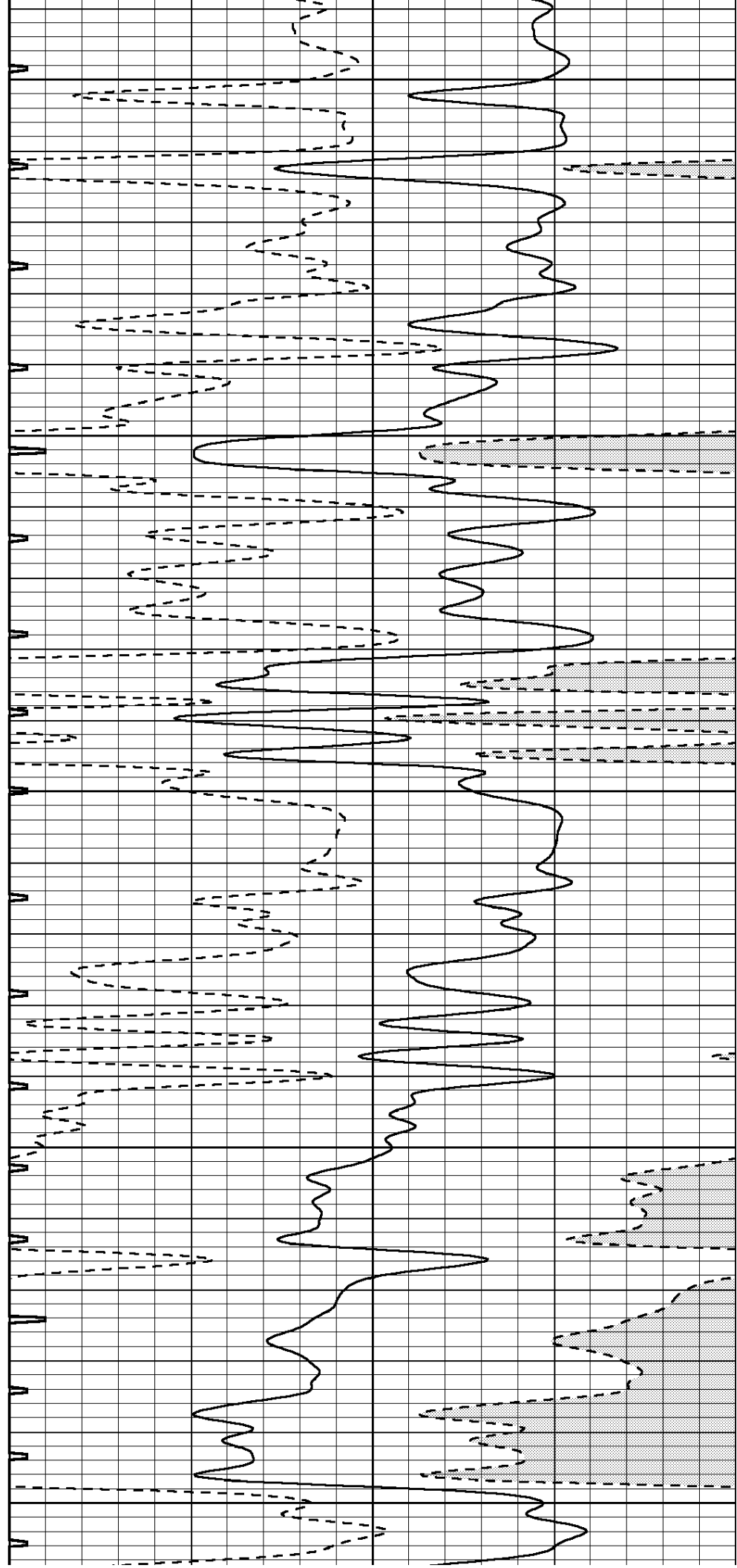
3050

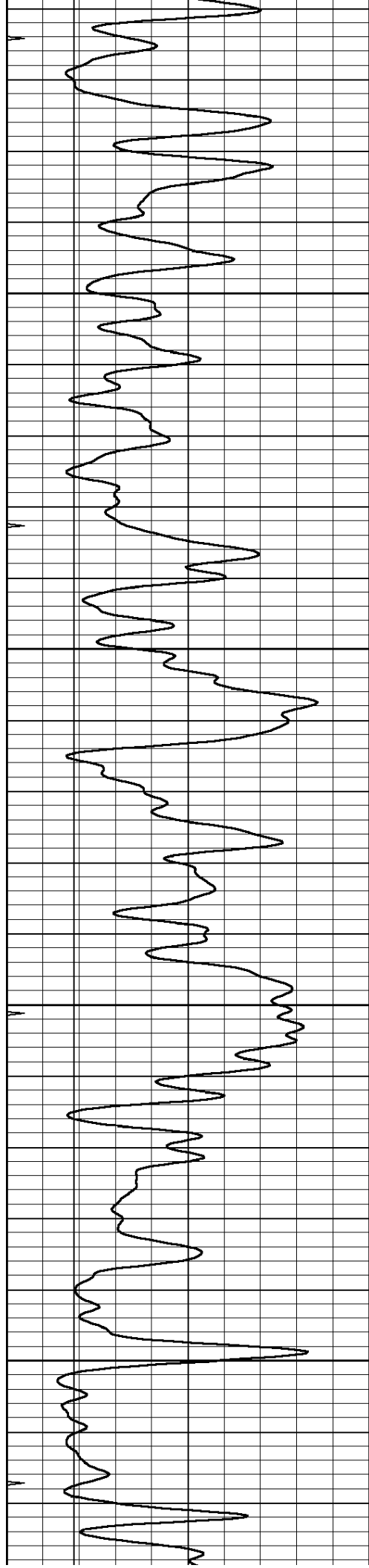
3100

3150

3200

3250



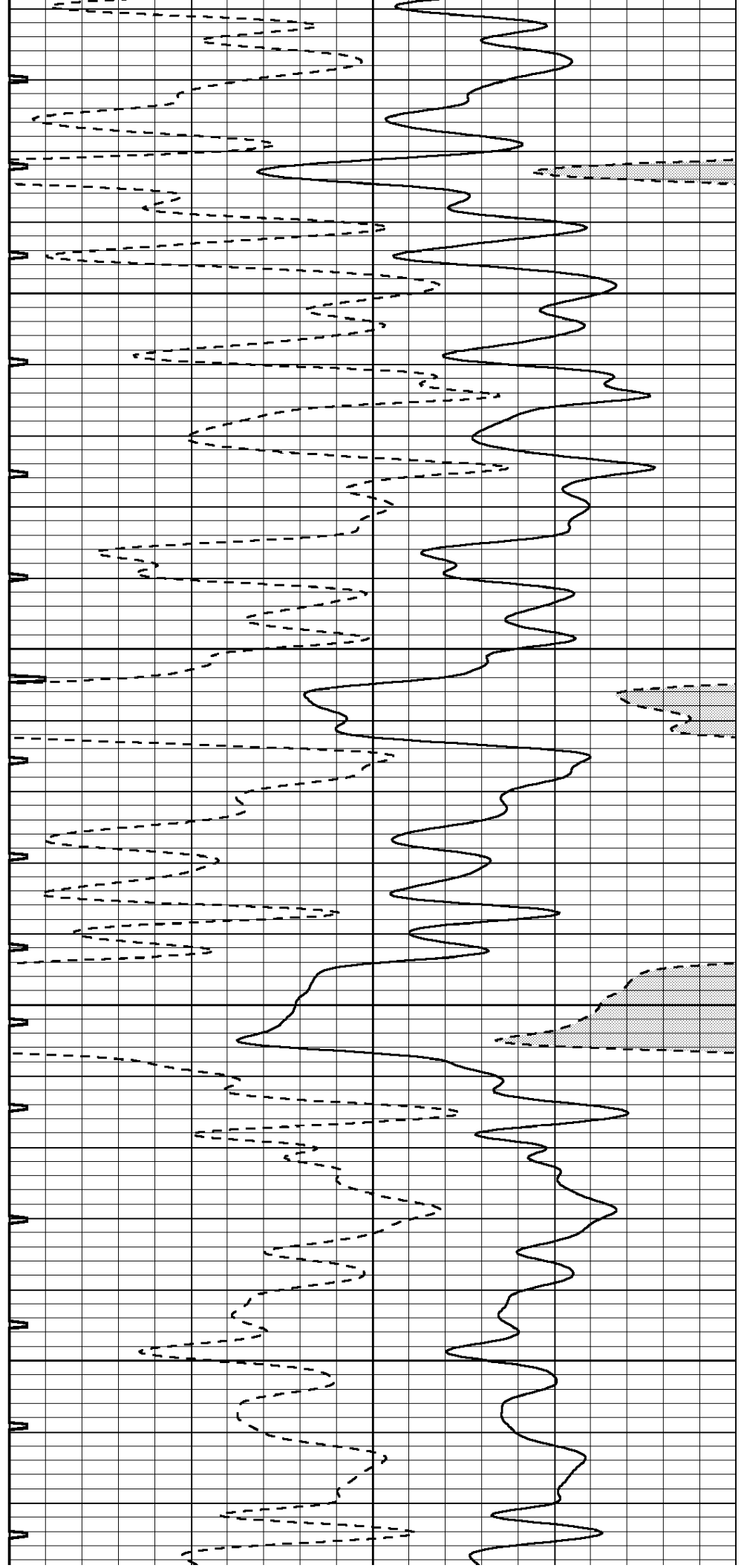


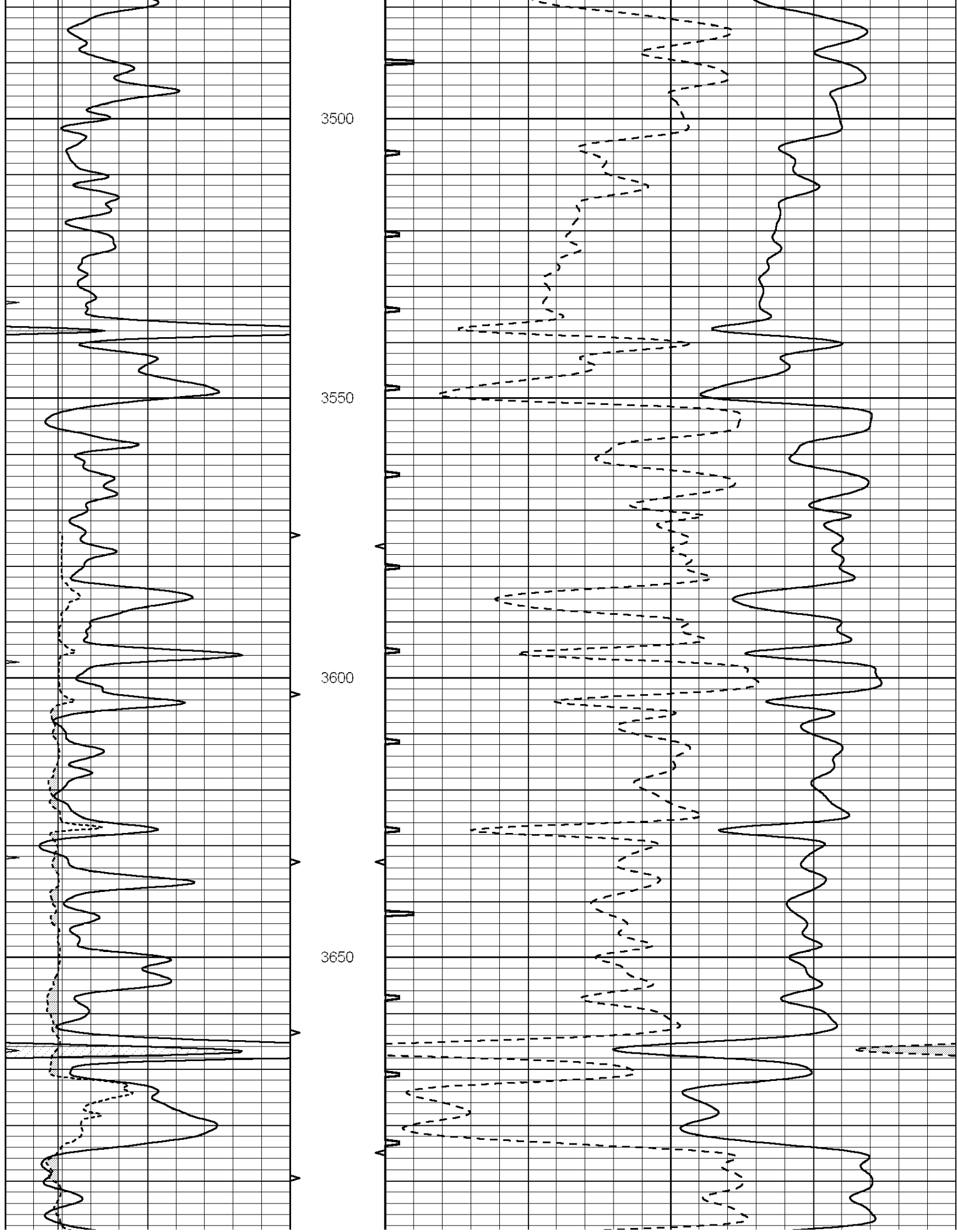
3300

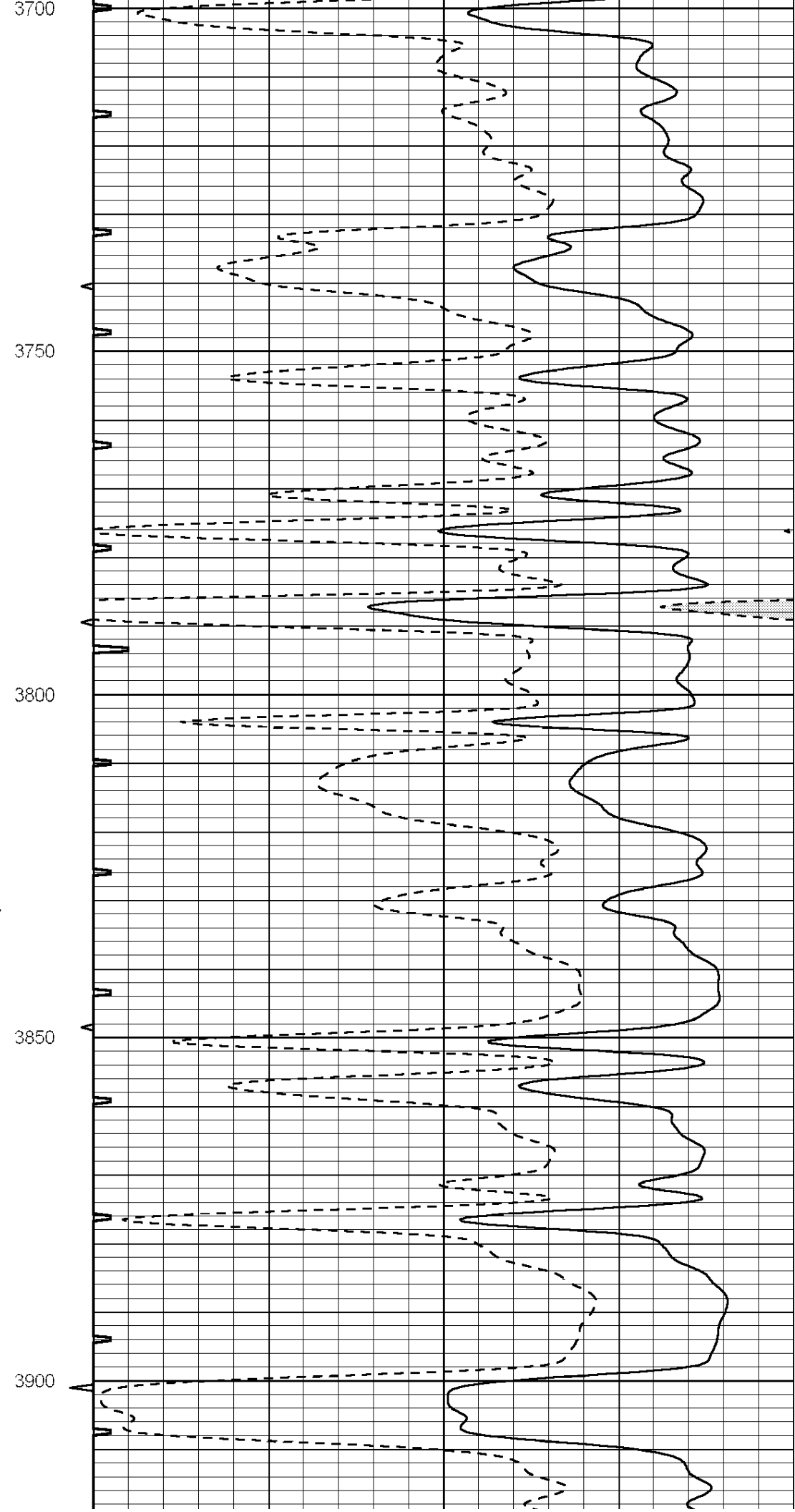
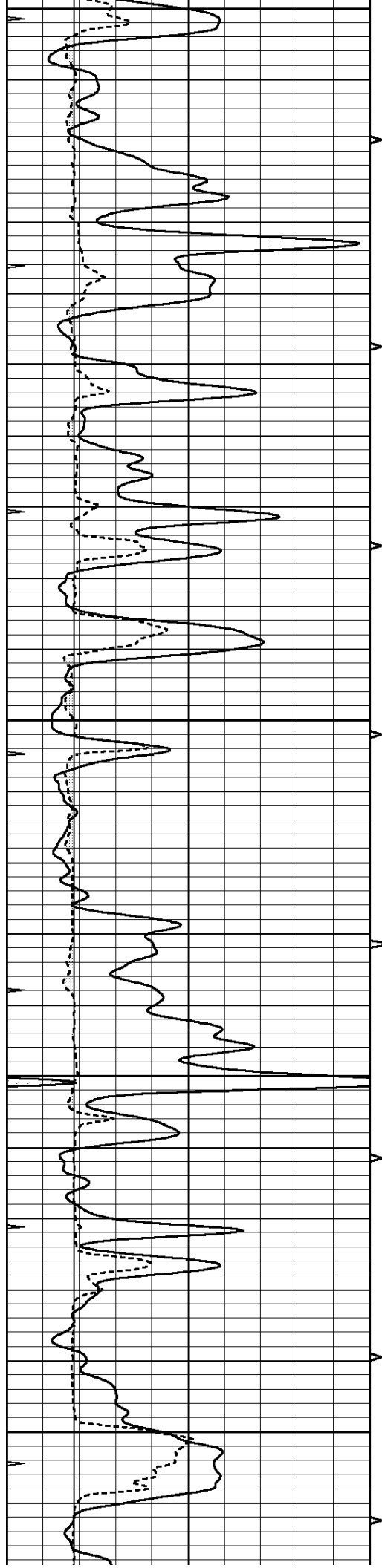
3350

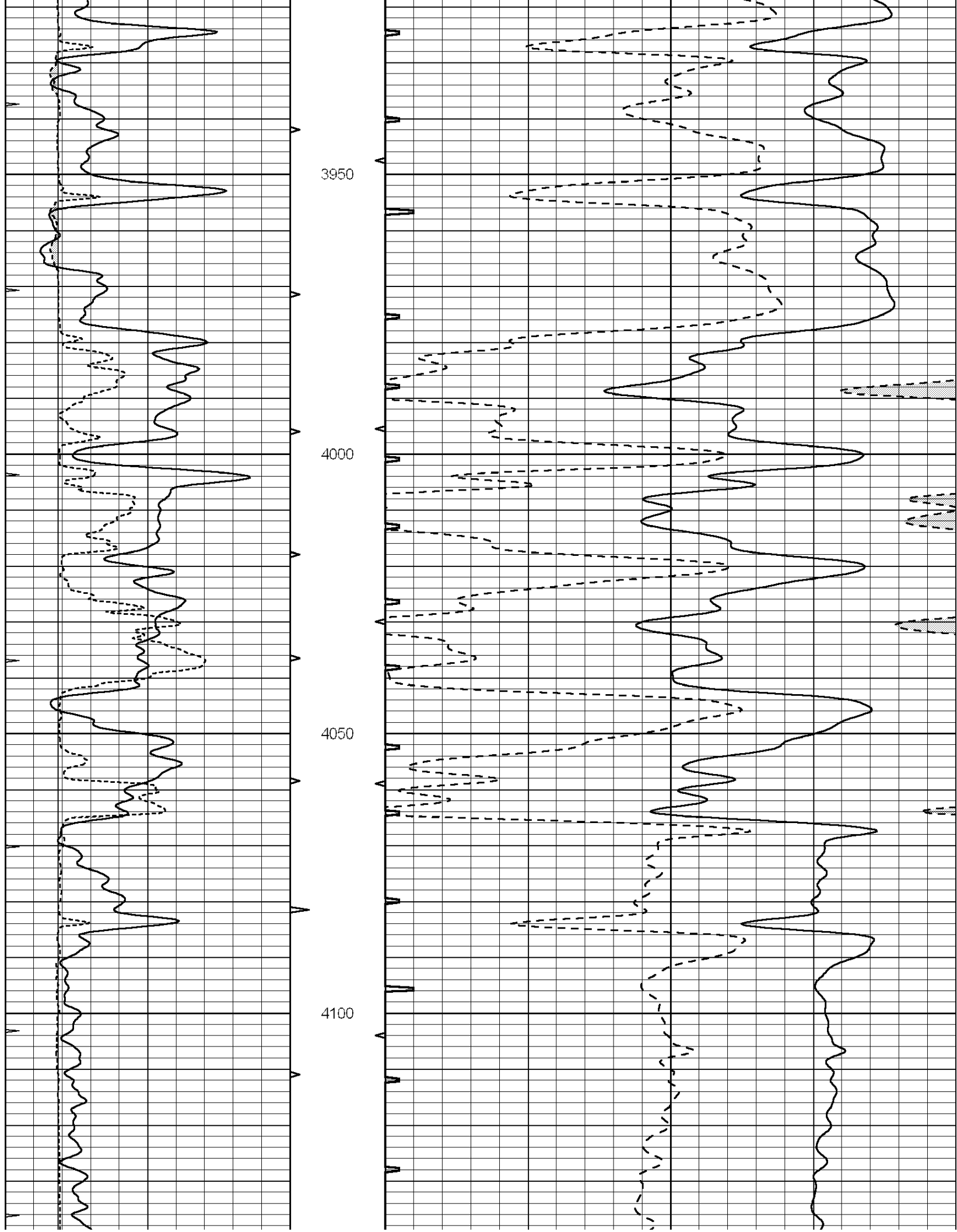
3400

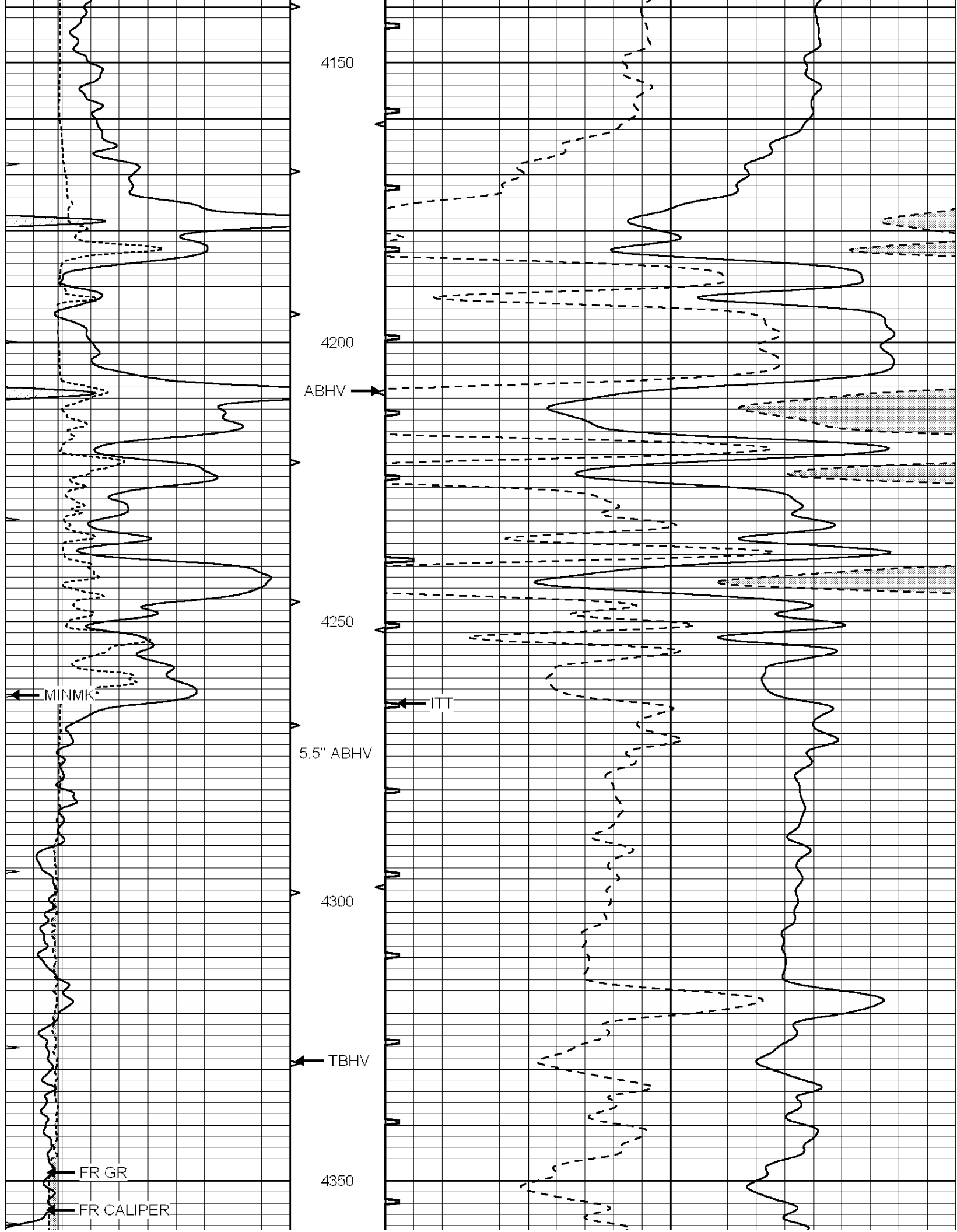
3450

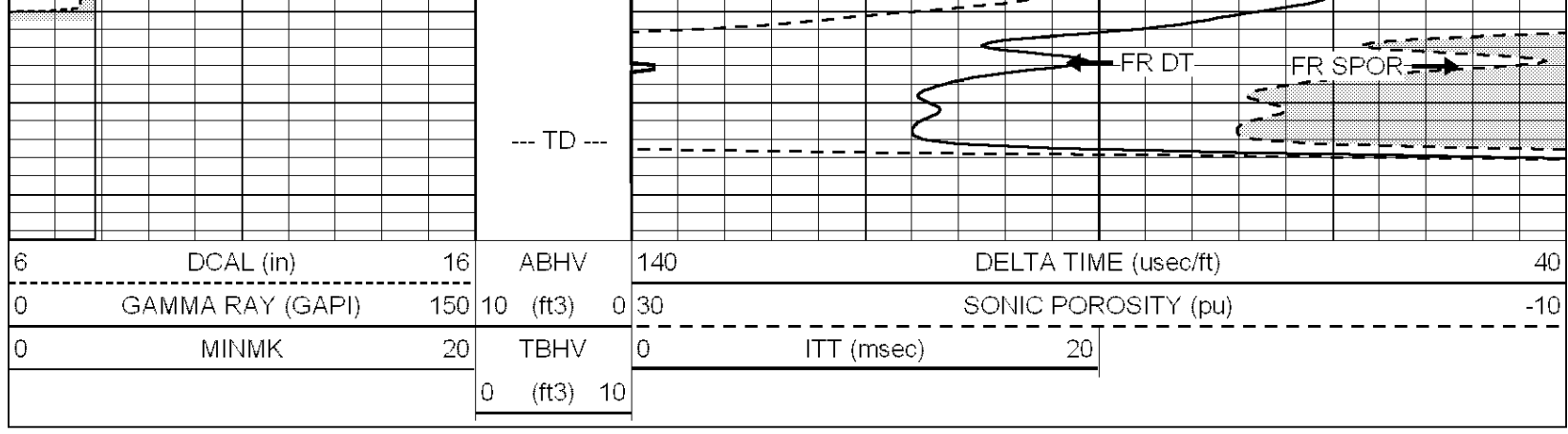






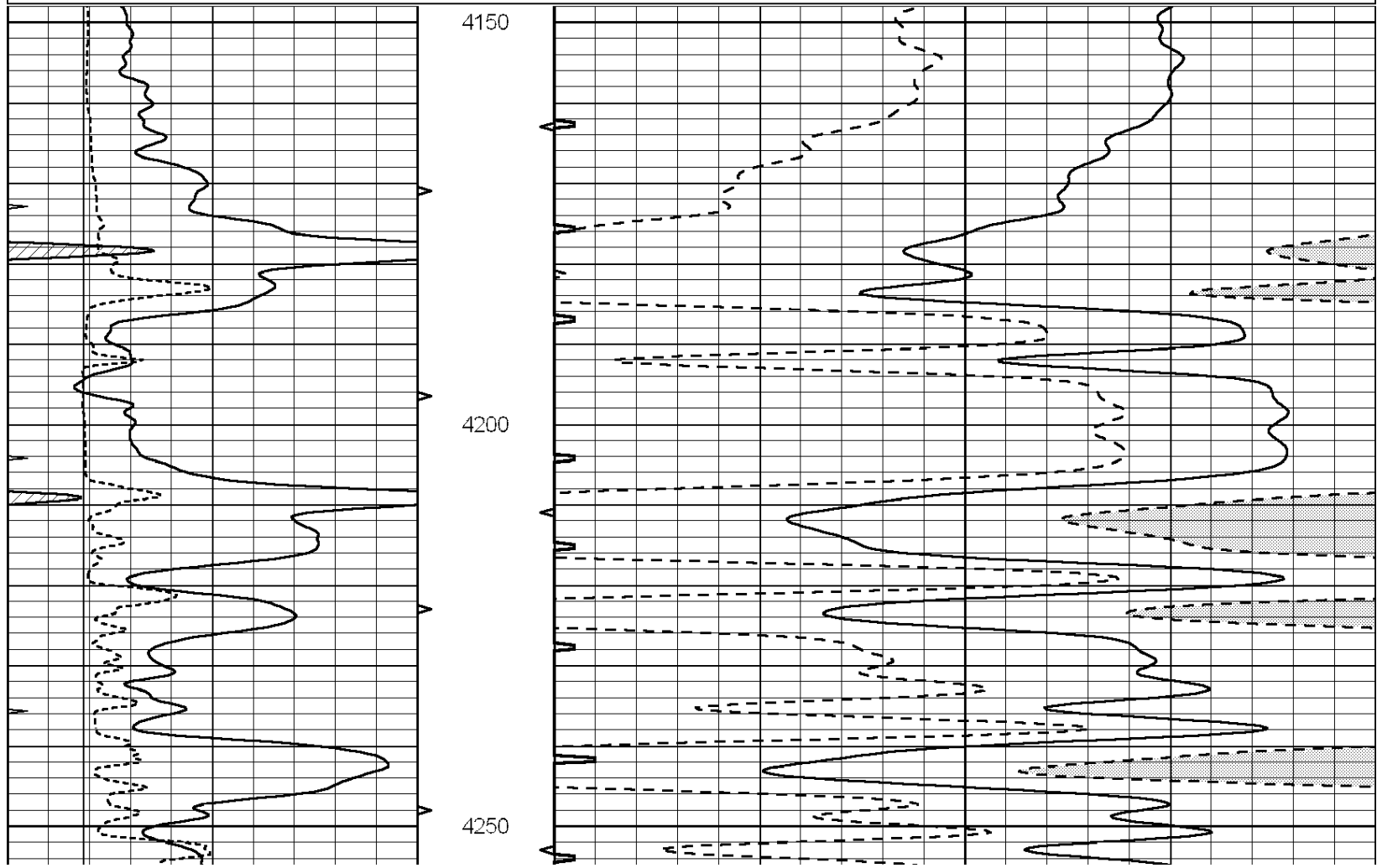
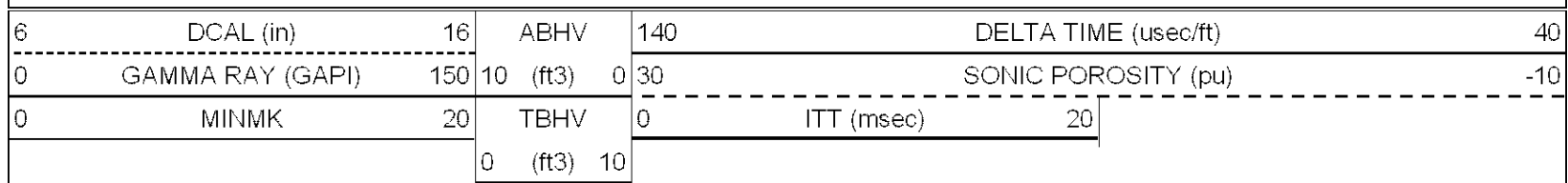


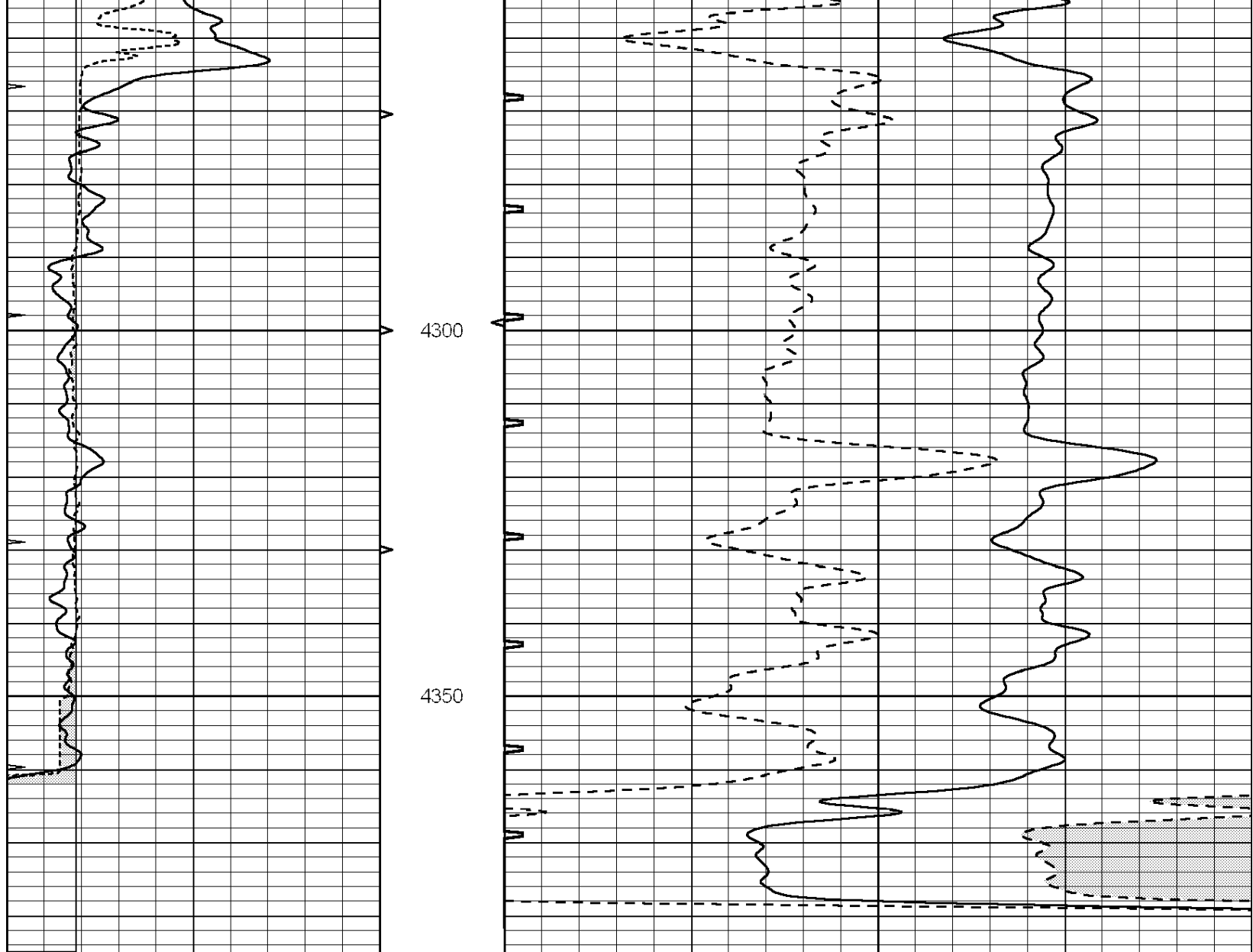




REPEAT SECTION

Database File: 009949pdn.db
 Dataset Pathname: pass4.2
 Presentation Format: slt
 Dataset Creation: Sat Nov 17 01:50:57 2012
 Charted by: Depth in Feet scaled 1:240





6	DCAL (in)	16	ABHV	140	DELTA TIME (usec/ft)	40
0	GAMMA RAY (GAPI)	150	10 (ft3)	0	SONIC POROSITY (pu)	-10
0	MINMK	20	TBHV	0	ITT (msec)	20
			0 (ft3)	10		