



Pioneer Energy Services

# Microresistivity Log

API No.	15-051-26471-00-00		
Company	Murfin Drilling Co. Inc.		
Well	Werth Trust #1-26		
Field	Martina		
County	Elis	State	Kansas
Location	SW NE SE NE 1700' FNL / 400' FEL		
Sec: 26	Twp: 15S	Rge: 19W	Other Services CNL / CDL DIL / BHCS

Permanent Datum	Ground Level	Elevation 1955	K.B. 1966 D.F. 1955 G.L. 1955
Log Measured From	Kelly Bushing	11 Ft. Above Perm. Datum	
Drilling Measured From	Kelly Bushing		
Date	2/3/2013		
Run Number	Two		
Depth Driller	3670		
Depth Logger	3668		
Bottom Logged Interval	3667		
Top Log Interval	2850		
Casing Driller	8.625 @ 1150		
Casing Logger	1149		
Bit Size	7.875		
Type Fluid in Hole	Chemical		
Salinity, ppm CL	8800		
Density / Viscosity	9.2	75	
pH / Fluid Loss	10.5	7.6	
Source of Sample	Flowline		
Rm @ Meas. Temp	0.42	@ 52	
Rmf @ Meas. Temp	0.32	@ 52	
Rmc @ Meas. Temp	0.57	@ 52	
Source of Rmf / Rmc	Charts		
Rm @ BHT	0.19	@ 113	
Operating Rig Time	4 Hours		
Max Rec. Temp. F	113		
Equipment Number	17		
Location	Hays		
Recorded By	R. Barnhart		
Witnessed By	Robert Hendrix		

<<< Fold Here >>>

All interpretations are opinions based on inferences from electrical or other measurements and we cannot and do not guarantee the accuracy or correctness of any interpretation, and we shall not, except in the case of gross or willful negligence on our part, be liable or responsible for any loss, costs, damages, or expenses incurred or sustained by anyone resulting from any interpretation made by any of our officers, agents or employees. These interpretations are also subject to our general terms and conditions set out in our current Price Schedule.

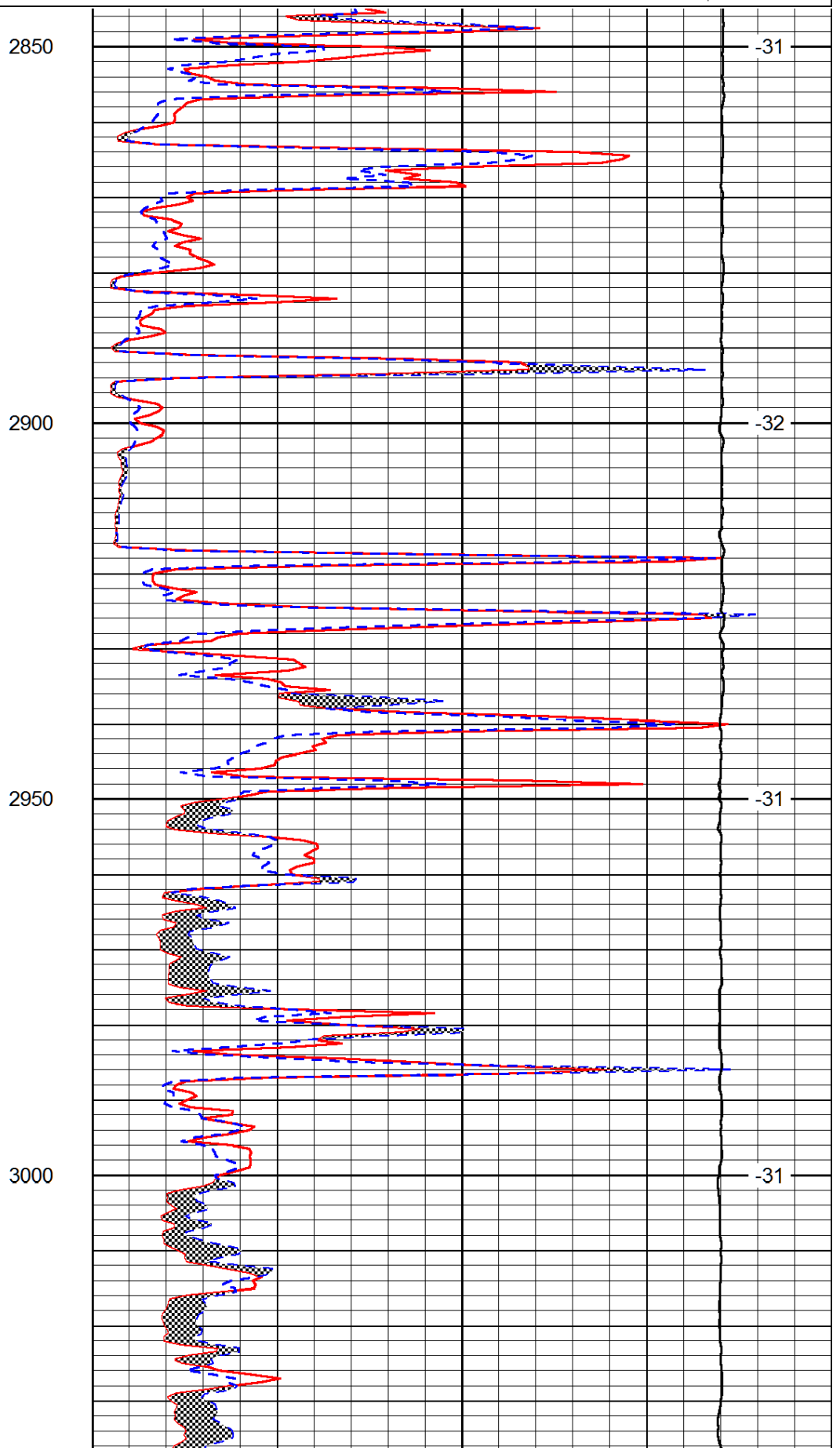
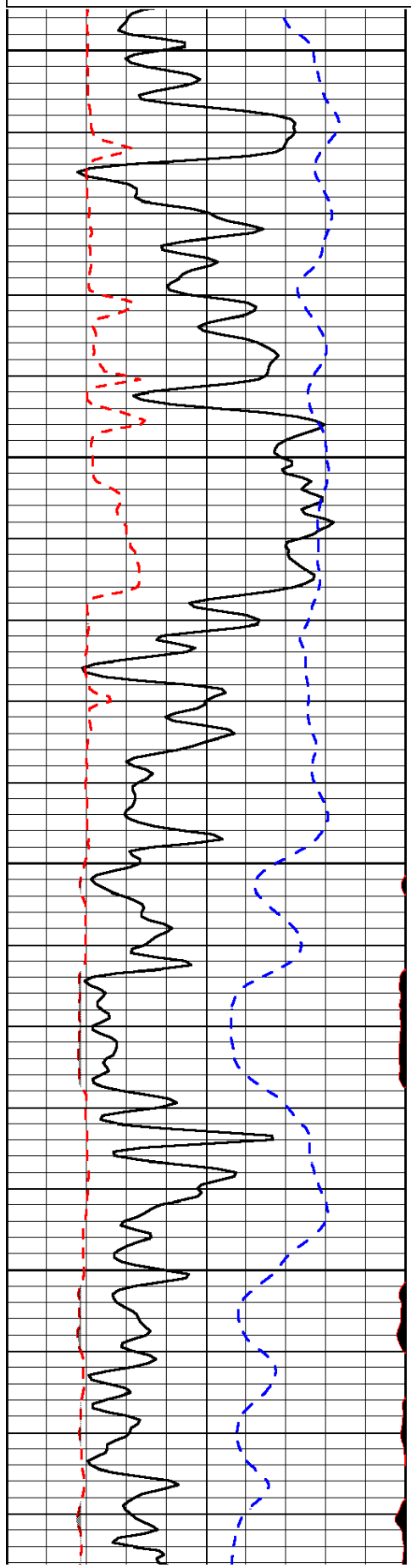
Comments

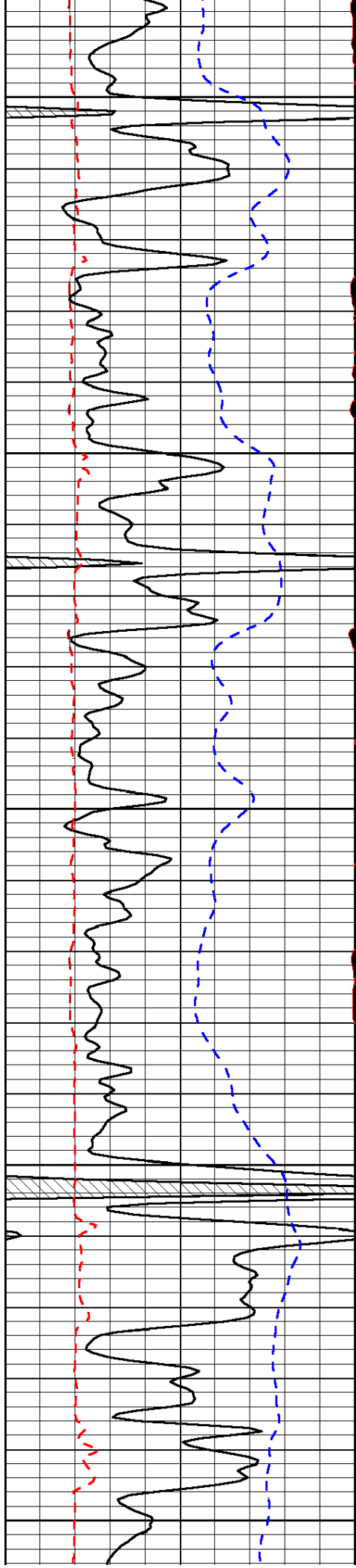
Thank you for using Log-Tech, Inc.  
 (785) 625-3858  
 Schoenchen, KS:  
 4W, 1/2N, W into

0	Gamma Ray (GAPI)	150
6	MCAL (in)	16
2.875	Mud Cake (in)	7.875
-200	SP (mV)	0

0	Micro Inverse 1 X 1 (Ohm-m)	40
0	Micro Normal 2" (Ohm-m)	40
10000	Line Weight (lb)	0

LSPD  
(ft/min)





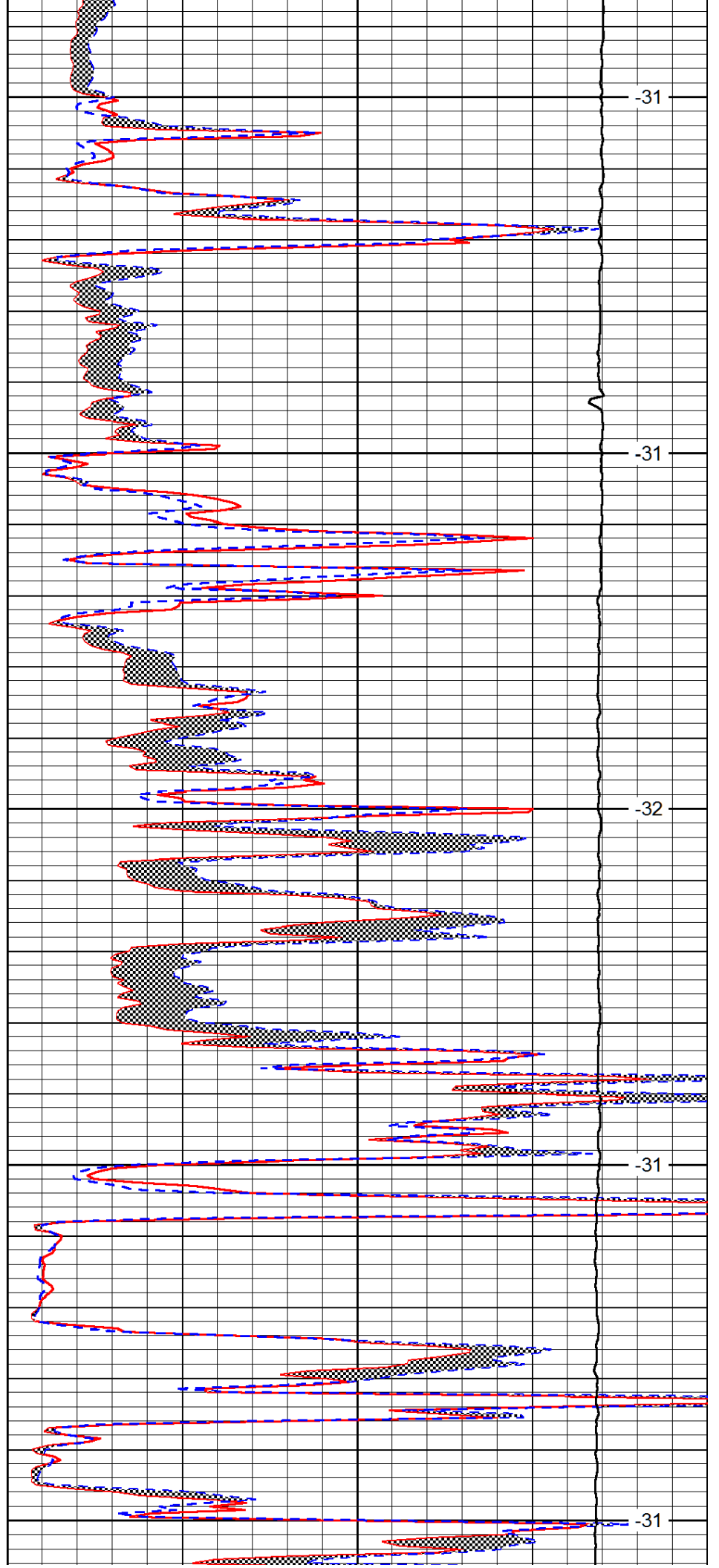
3050

3100

3150

3200

3250



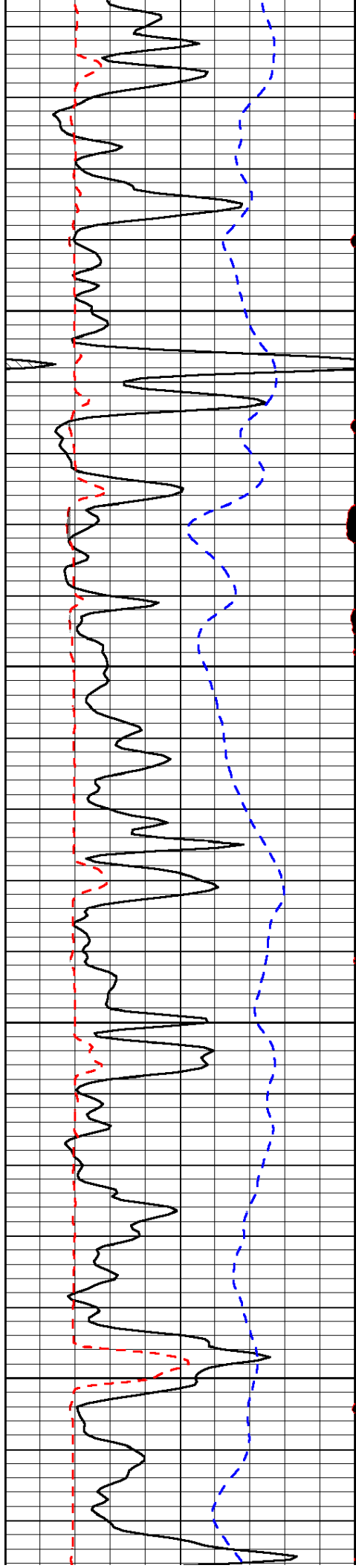
-31

-31

-32

-31

-31

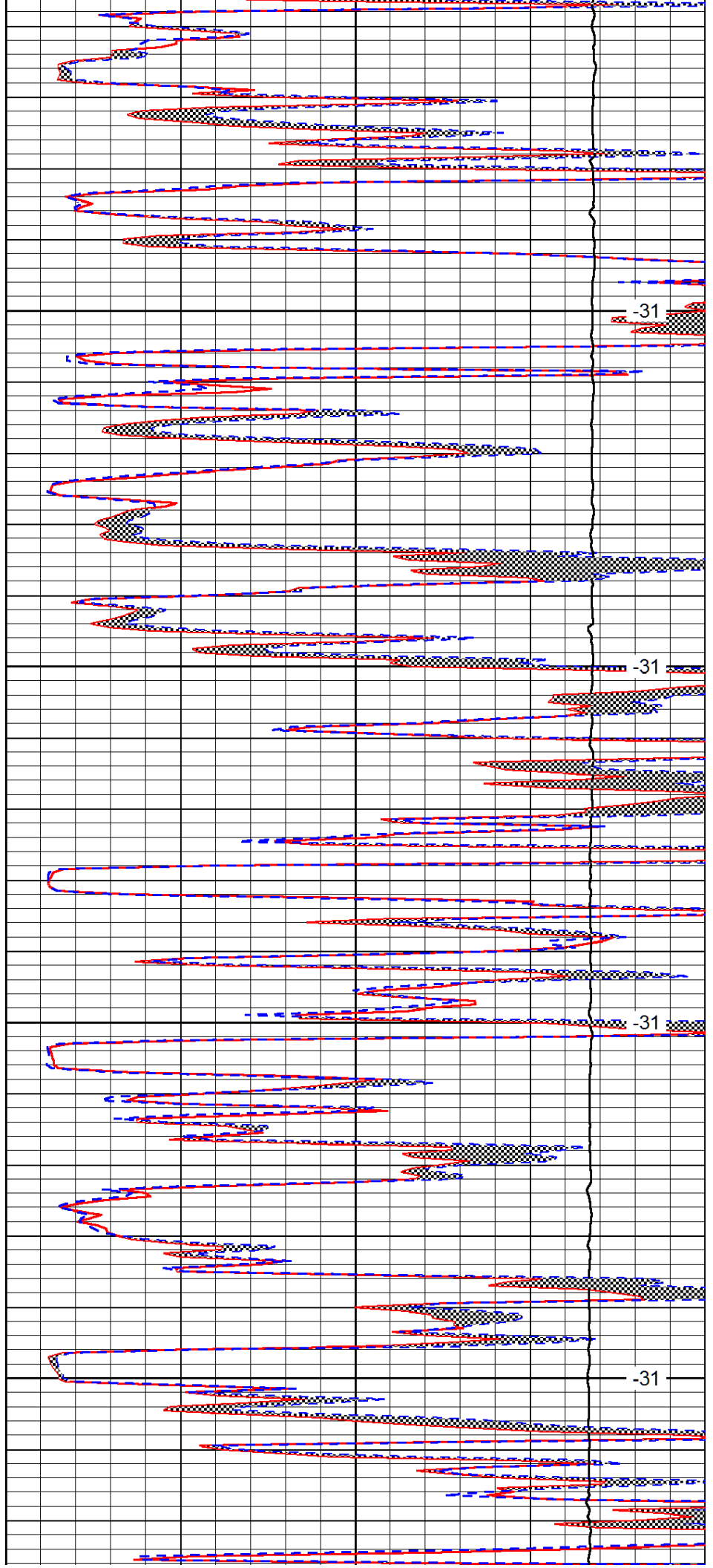


3300

3350

3400

3450

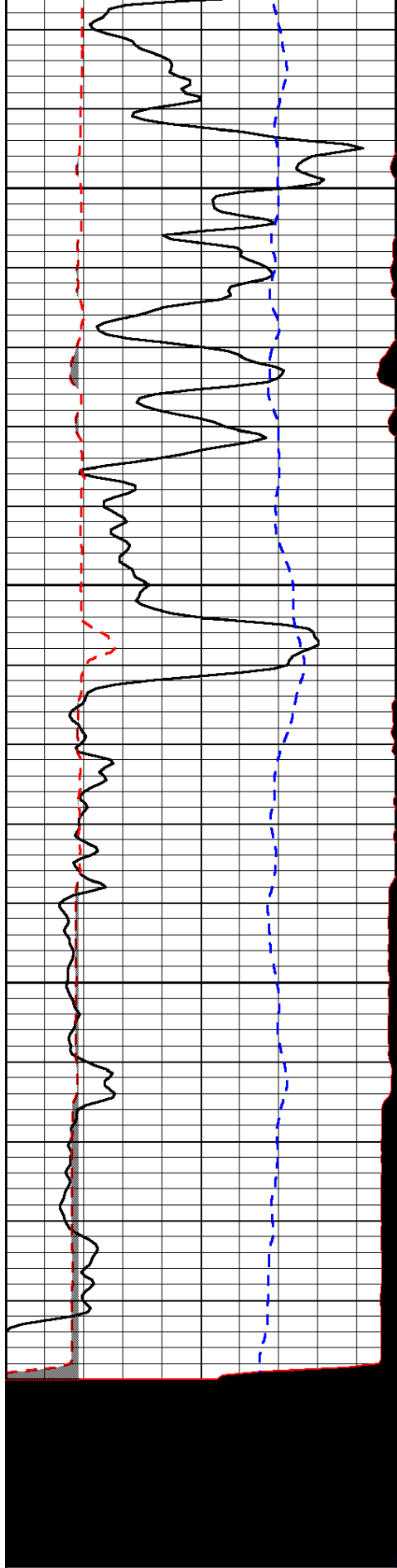


-31

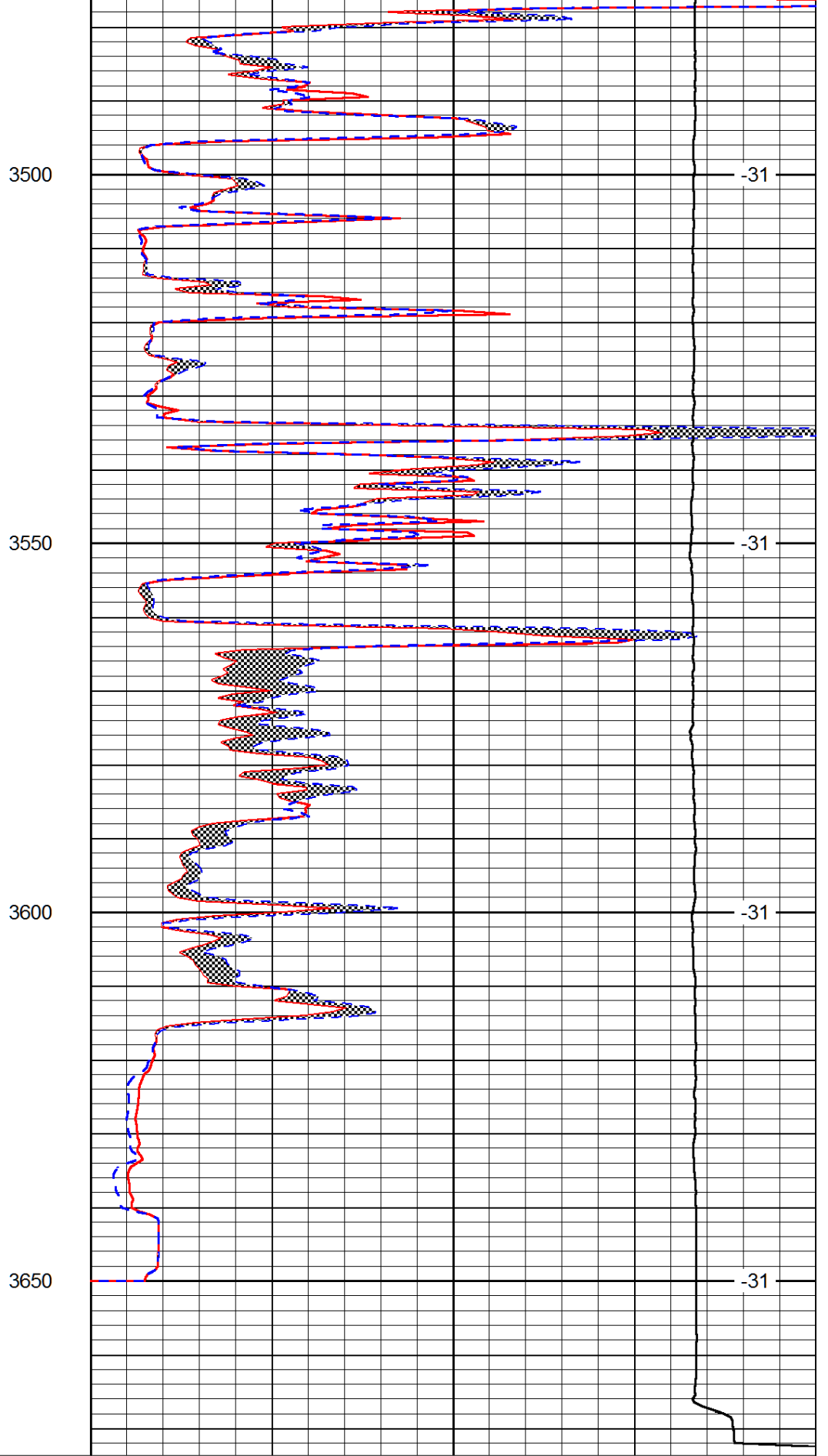
-31

-31

-31



0	Gamma Ray (GAPI)	150
6	MCAL (in)	16
2.875	Mud Cake (in)	7.875
-200	SP (mV)	0



0	Micro Inverse 1 X 1 (Ohm-m)	40
0	Micro Normal 2" (Ohm-m)	40
10000	Line Weight (lb)	0

LSPD  
(ft/min)

