



Pioneer Energy Services

## Borehole Compensated Sonic Log

15-051-26471-00-00

**Company** Murfin Drilling Co. Inc.  
**Well** Werth Trust #1-26  
**Field** Martina  
**County** Ellis **State** Kansas

**Location**  
 SW NE SE NE  
 1700' FNL / 400' FEL

**Sec:** 26 **Twp:** 15S **Rge:** 19W

Other Services  
 CNL/CDL  
 MEL/DIL

**Permanent Datum** Ground Level **Elevation** 1955  
**Log Measured From** Kelly Bushing **11 Ft. Above Perm. Datum**  
**Drilling Measured From** Kelly Bushing

**Elevation**  
 K.B. 1966  
 D.F. 1955  
 G.L. 1955

Date	2/3/2013	
Run Number	Two	
Type Log	BHC Sonic	
Depth Driller	3670	
Depth Logger	3668	
Bottom Logged Interval	3657	
Top Logged Interval	1150	
Type Fluid In Hole	Chemical	
Salinity, PPM CL	8800	
Density	9.2	
Level	Full	
Max. Rec. Temp. F	113	
Operating Rig Time	4 Hours	
Equipment -- Location	17 Hays	
Recorded By	R. Barnhart	
Witnessed By	Robert Hendrix	

Borehole Record				Casing Record			
Run No.	Bit	From	To	Size	Wgt.	From	To
One	12.25	00	1150	8.625	23#	00	1150
Two	7.875	1150	TD				

<<< Fold Here >>>

All interpretations are opinions based on inferences from electrical or other measurements and we cannot and do not guarantee the accuracy or correctness of any interpretation, and we shall not, except in the case of gross or willful negligence on our part, be liable or responsible for any loss, costs, damages, or expenses incurred or sustained by anyone resulting from any interpretation made by any of our officers, agents or employees. These interpretations are also subject to our general terms and conditions set out in our current Price Schedule.

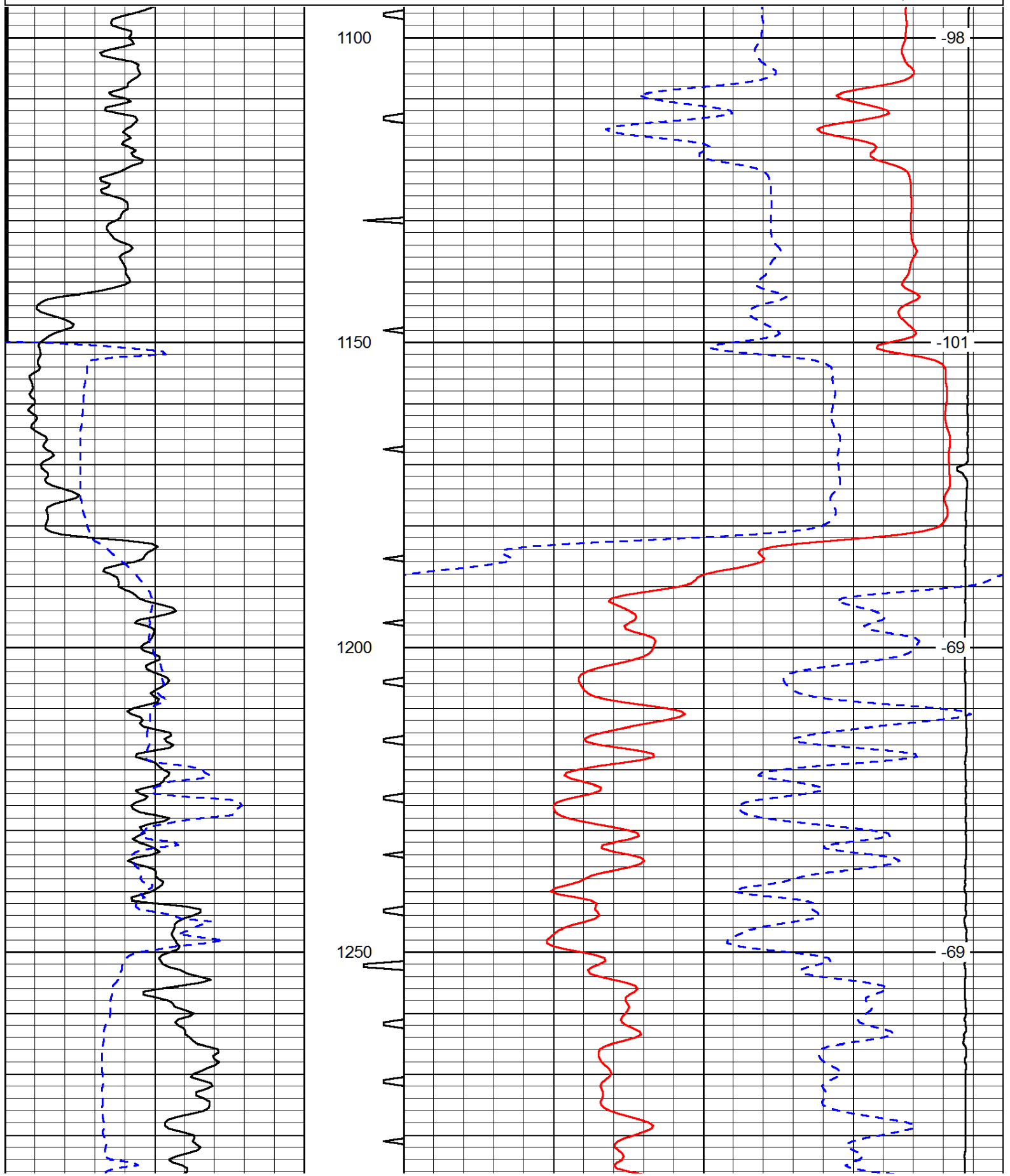
### Comments

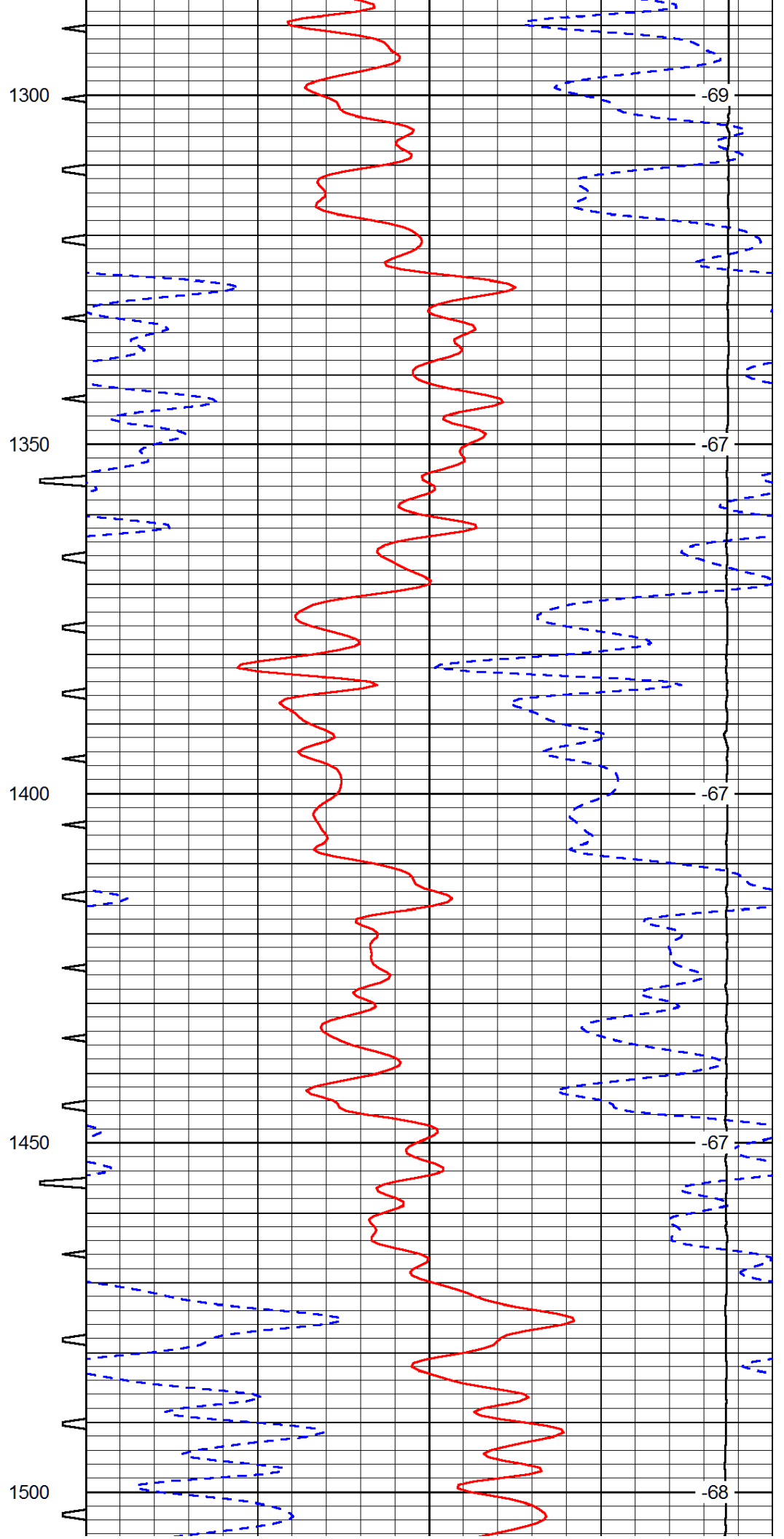
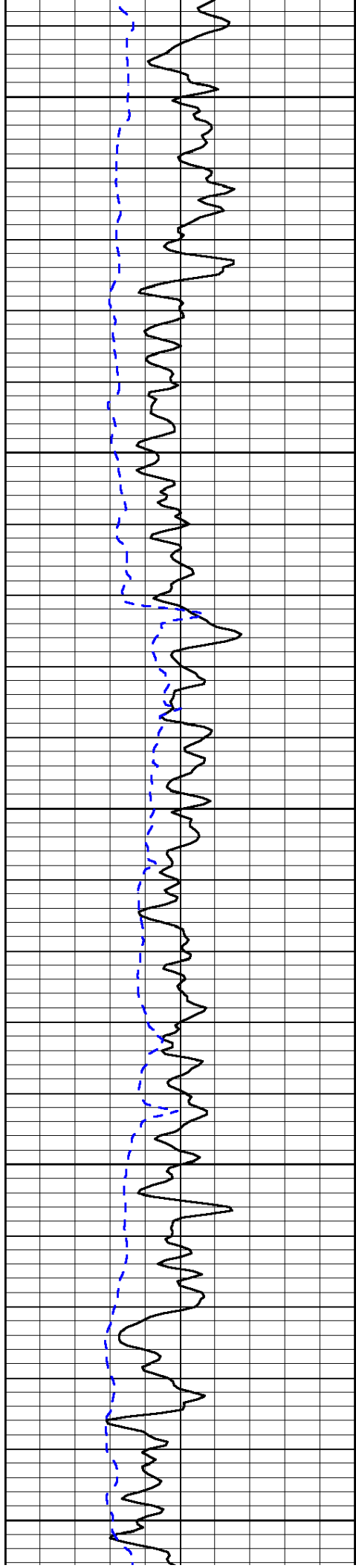
Thank you for using Log-Tech, Inc.  
 (785) 625-3858  
  
 Schoenchen, KS:  
 4W, 1/2N, W into

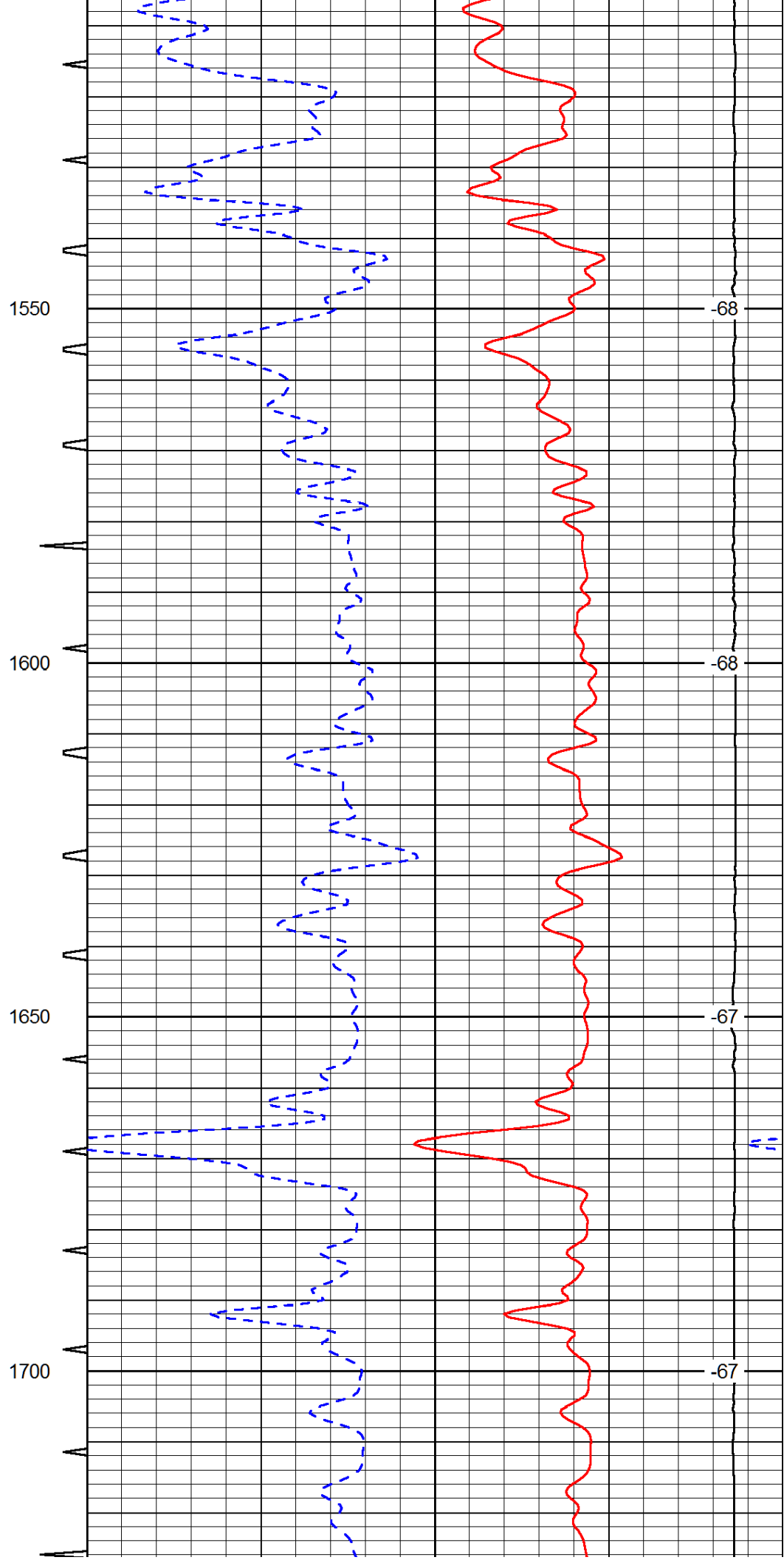
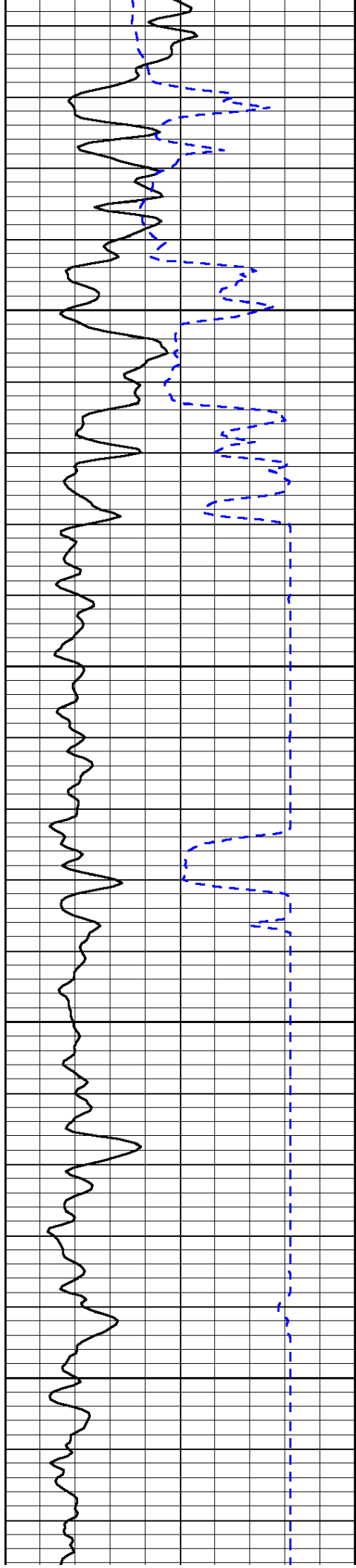
Database File: murfin\_hd.db  
 Dataset Pathname: dil/mrfmain  
 Presentation Format: sonic  
 Dataset Creation: Sun Feb 03 08:18:47 2013  
 Charted by: Depth in Feet scaled 1:240

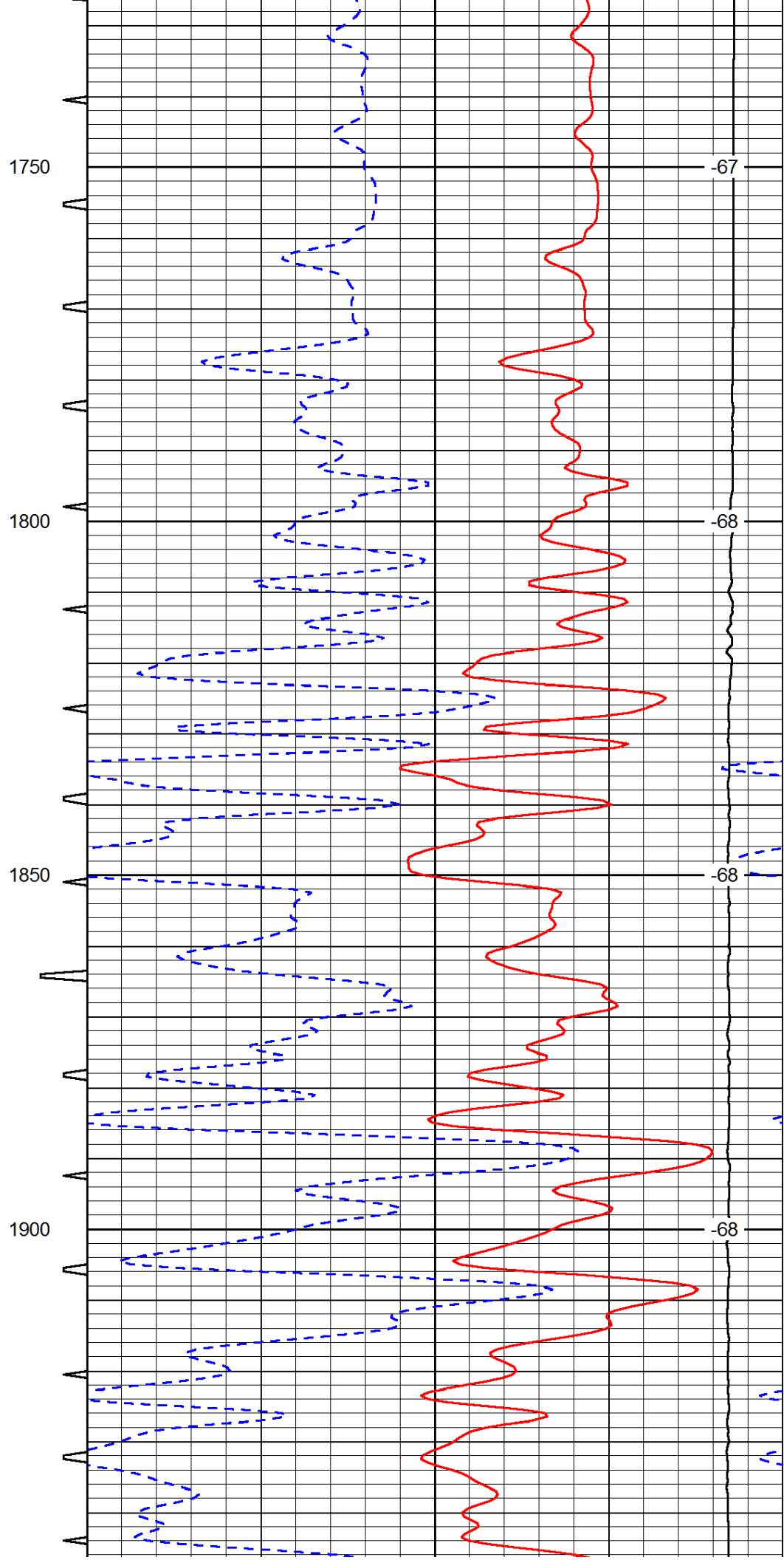
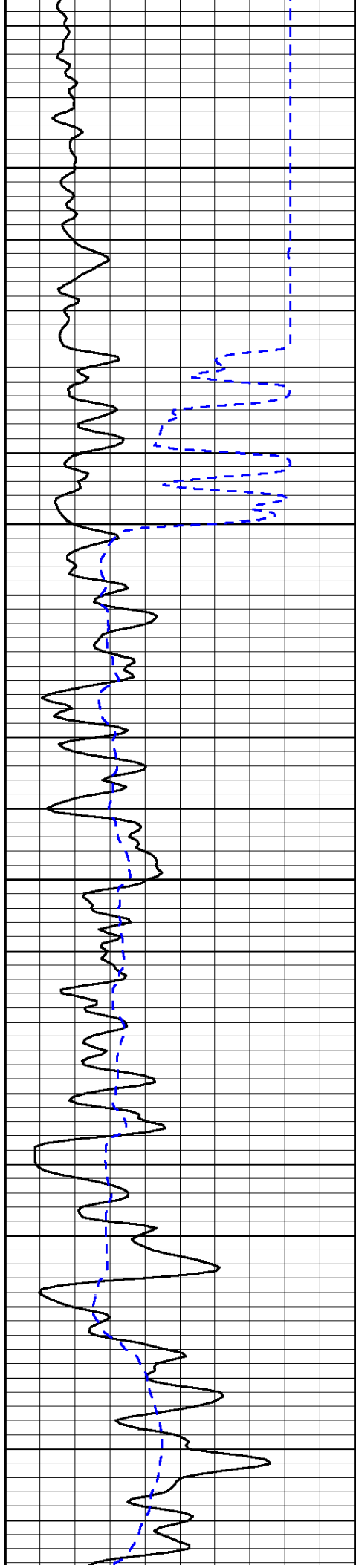
0	Gamma Ray (GAPI)	150	Sonic Int	140	Delta Time (usec/ft) (usec/ft)	40
150	Gamma Ray (GAPI)	300	5 (msec) 0	30	Sonic Porosity (pu)	-10
6	dCAL (in)	16		15000	LTEN (lb) (lb)	0

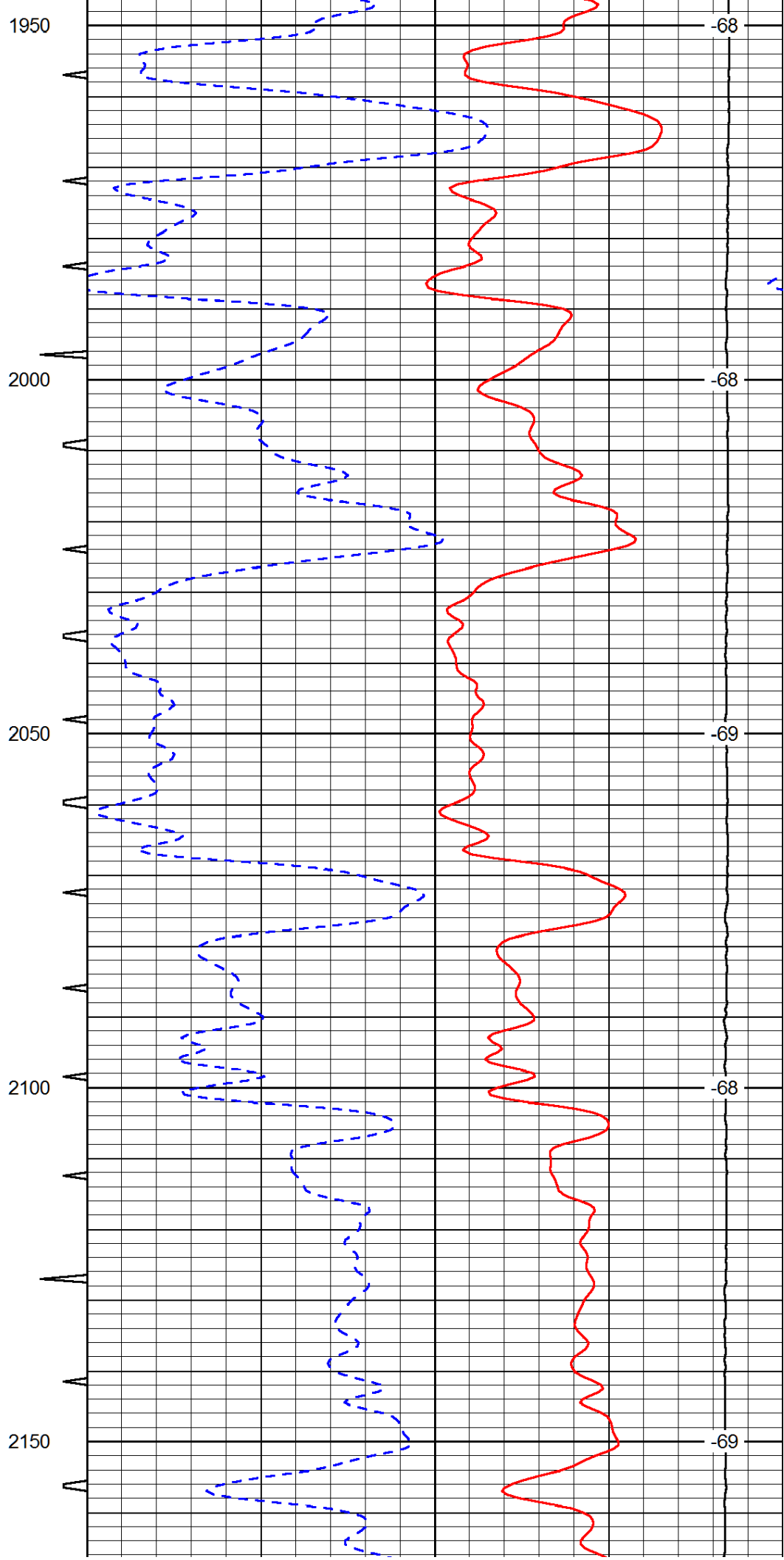
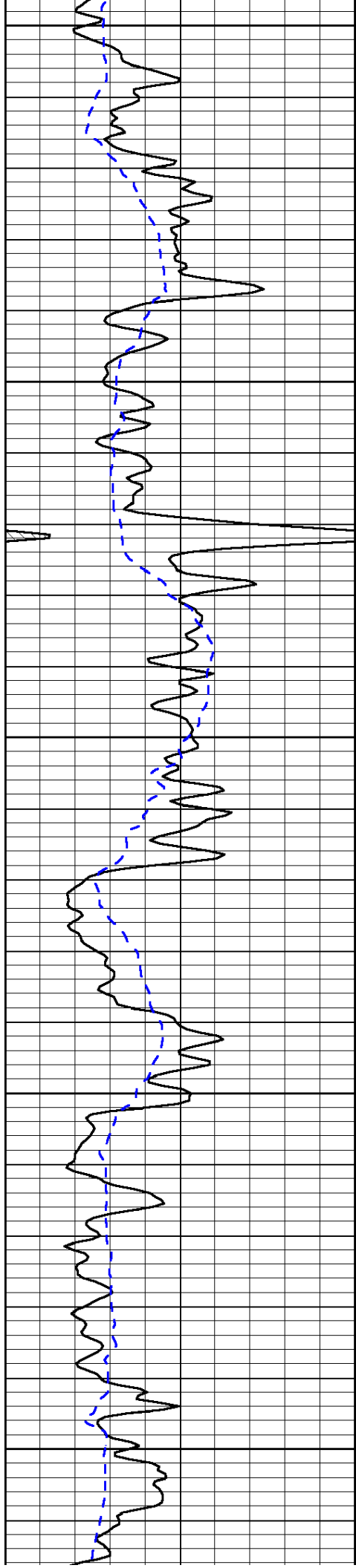
LSPD  
(ft/min)

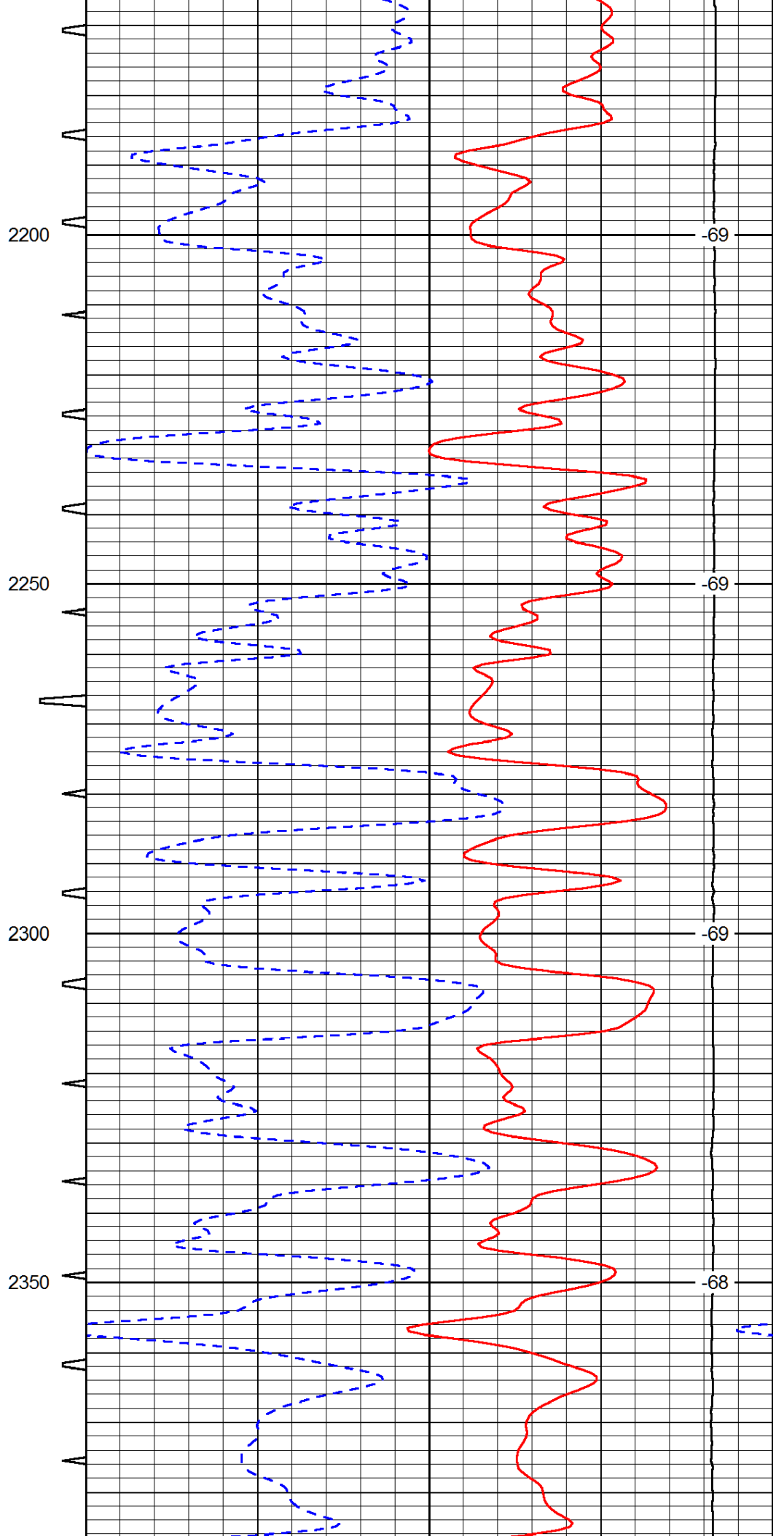
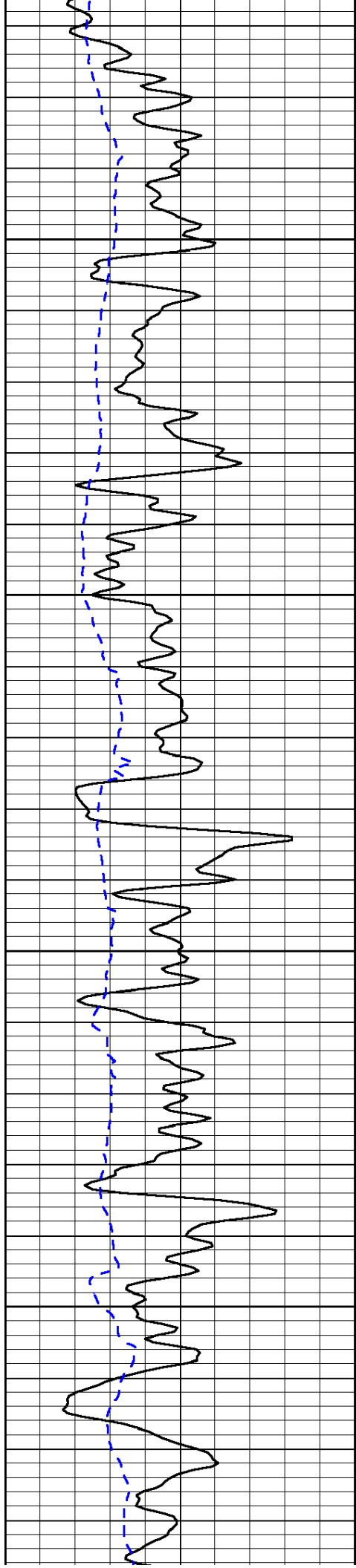


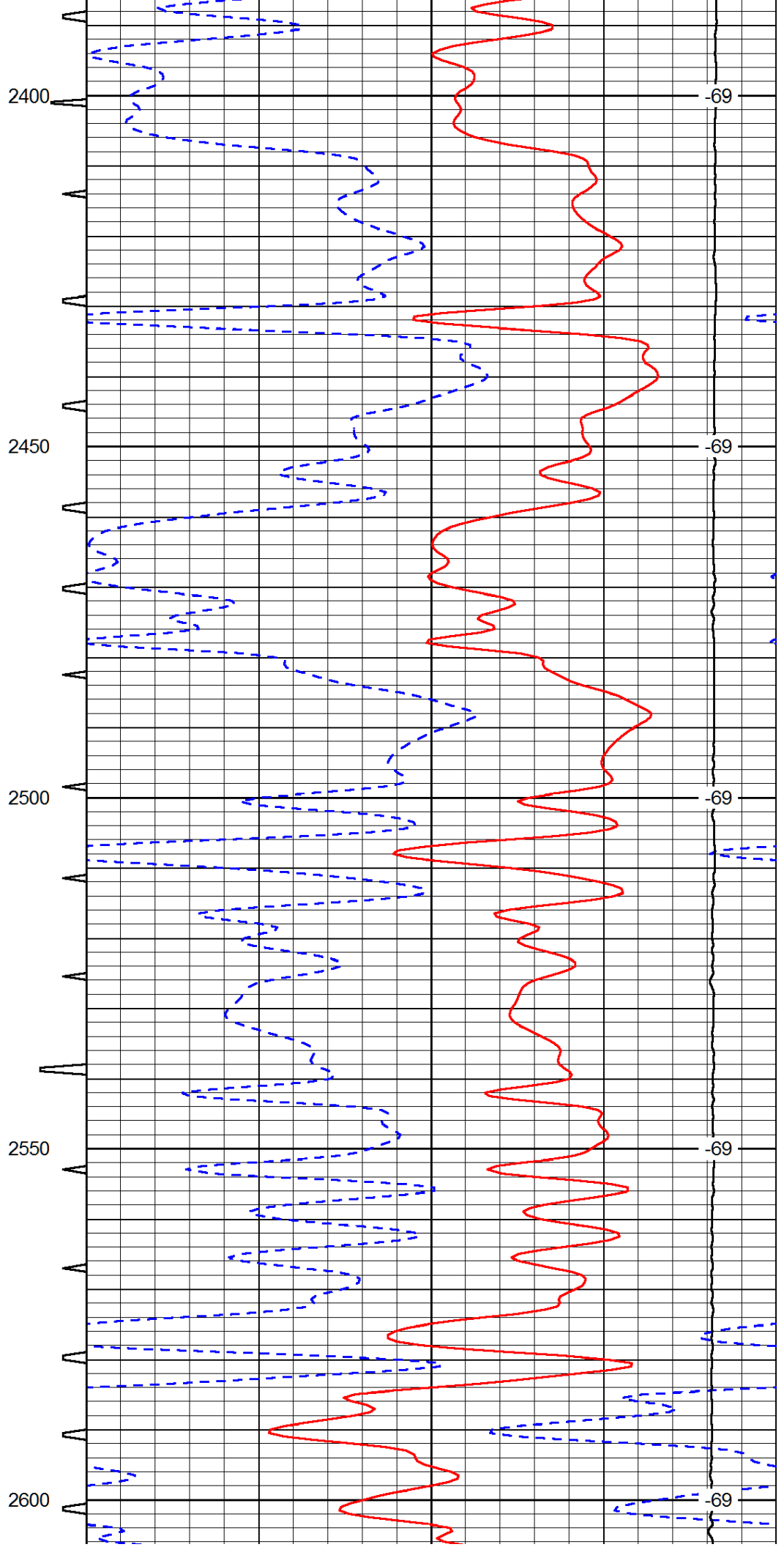
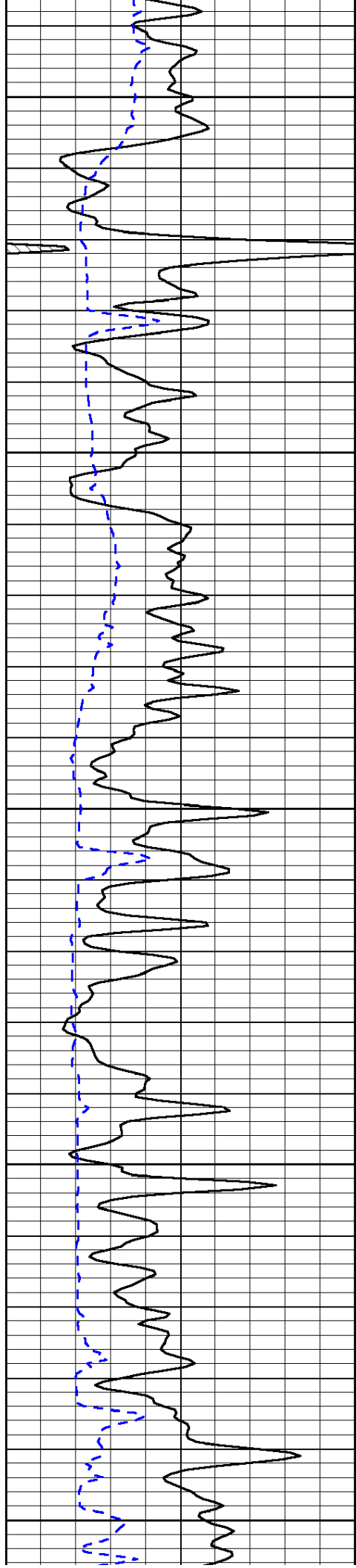


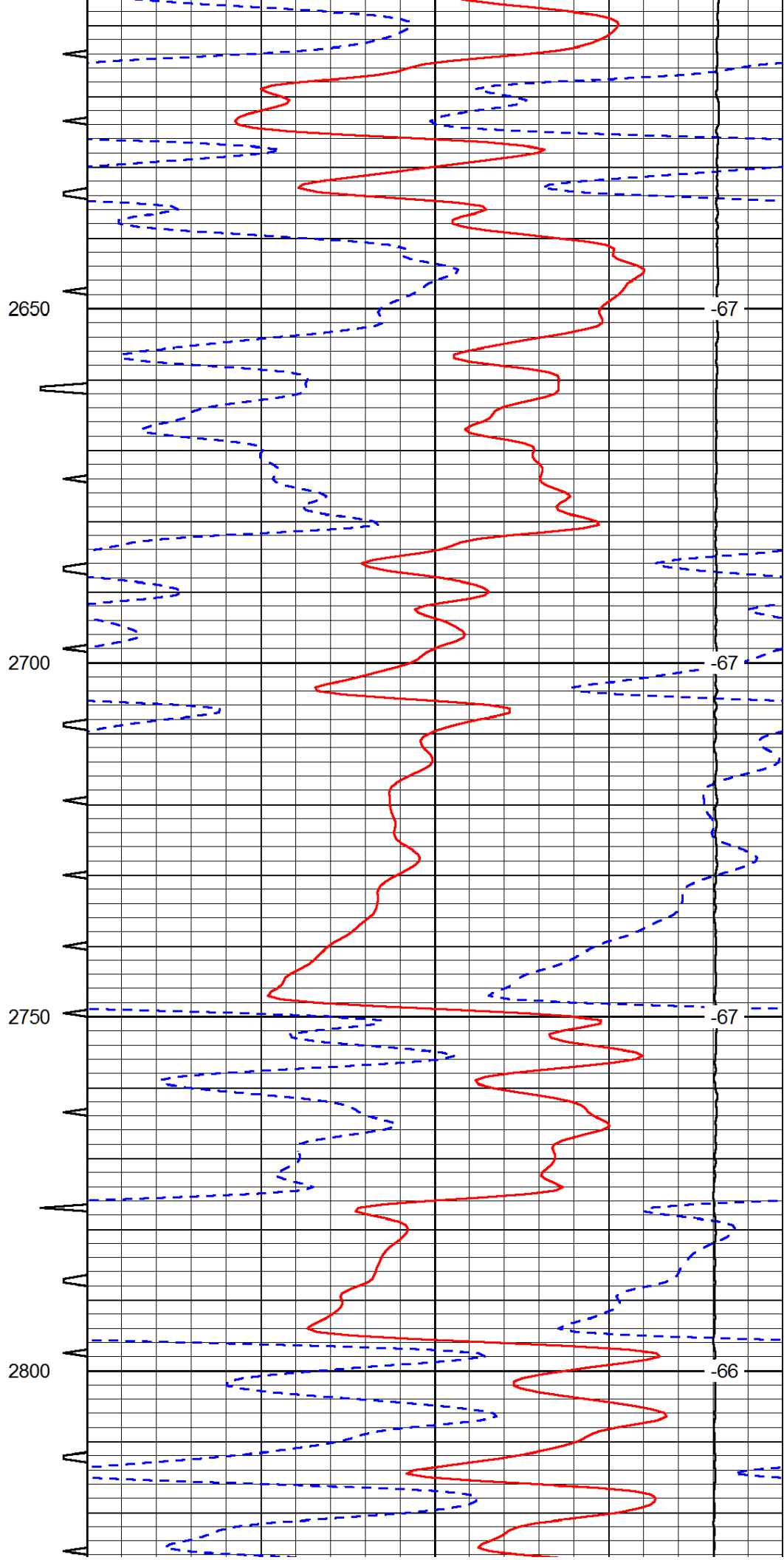
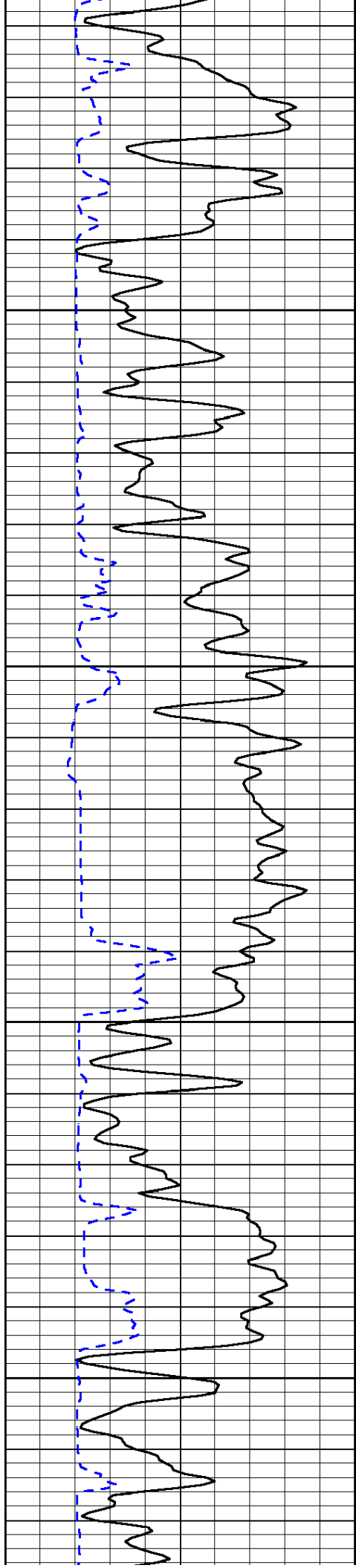


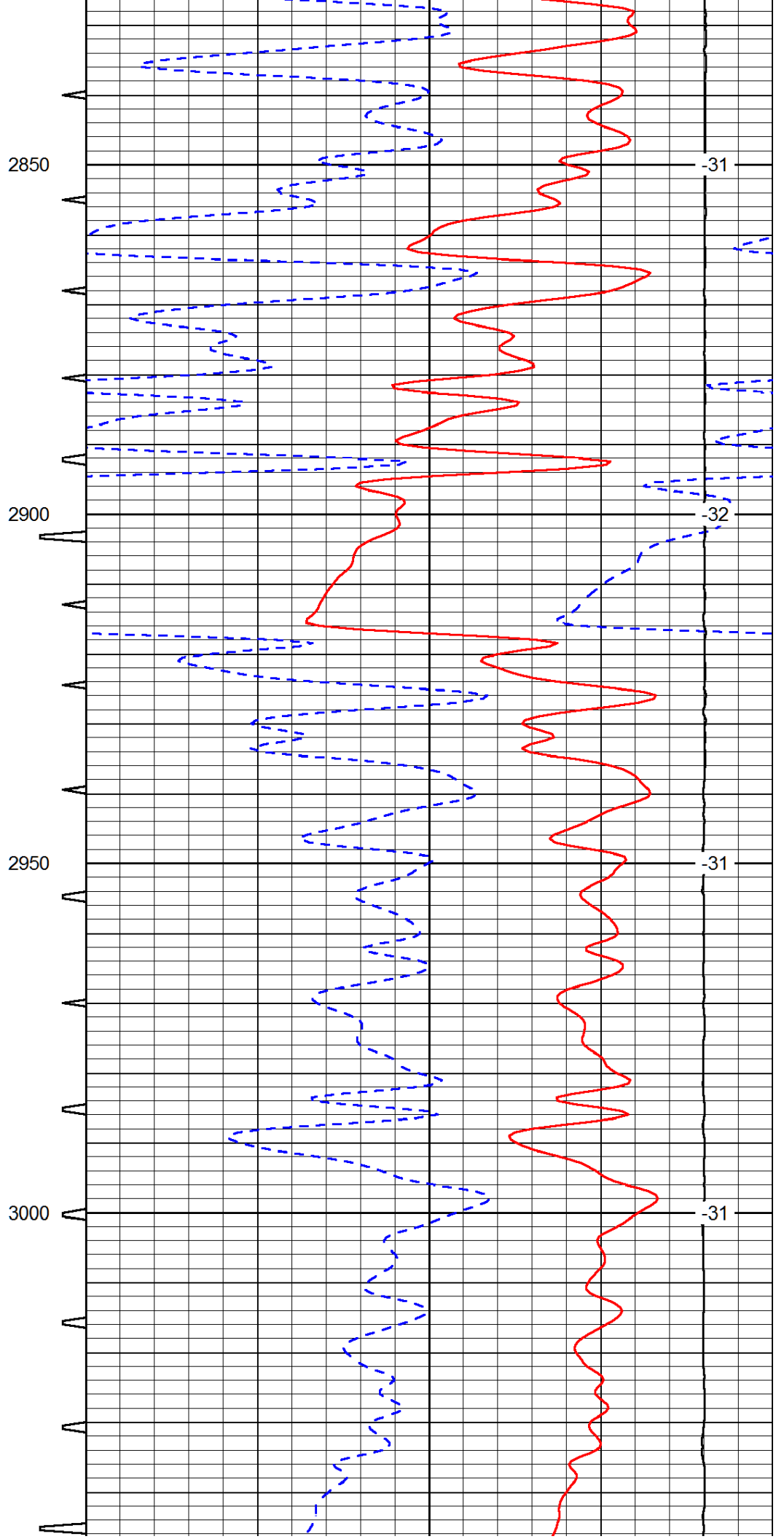
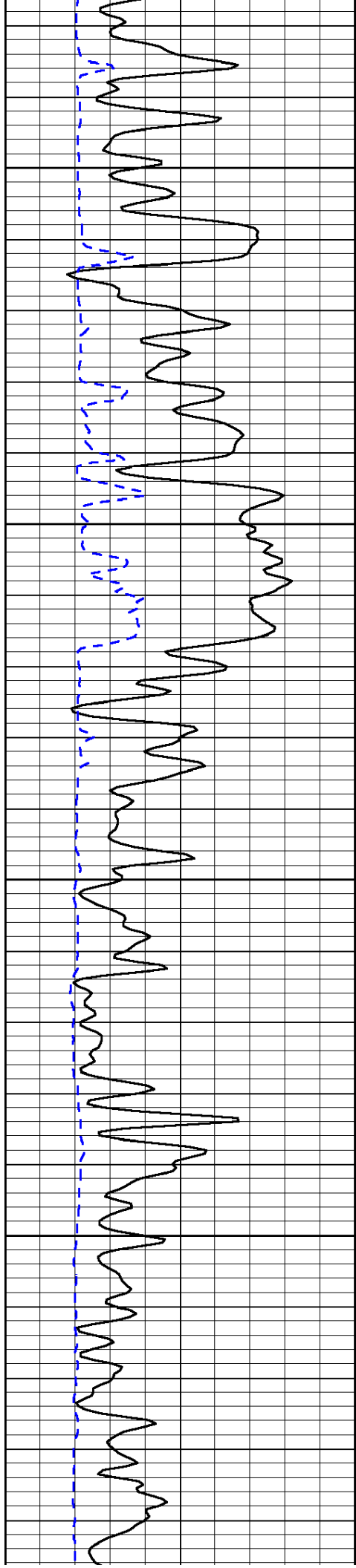


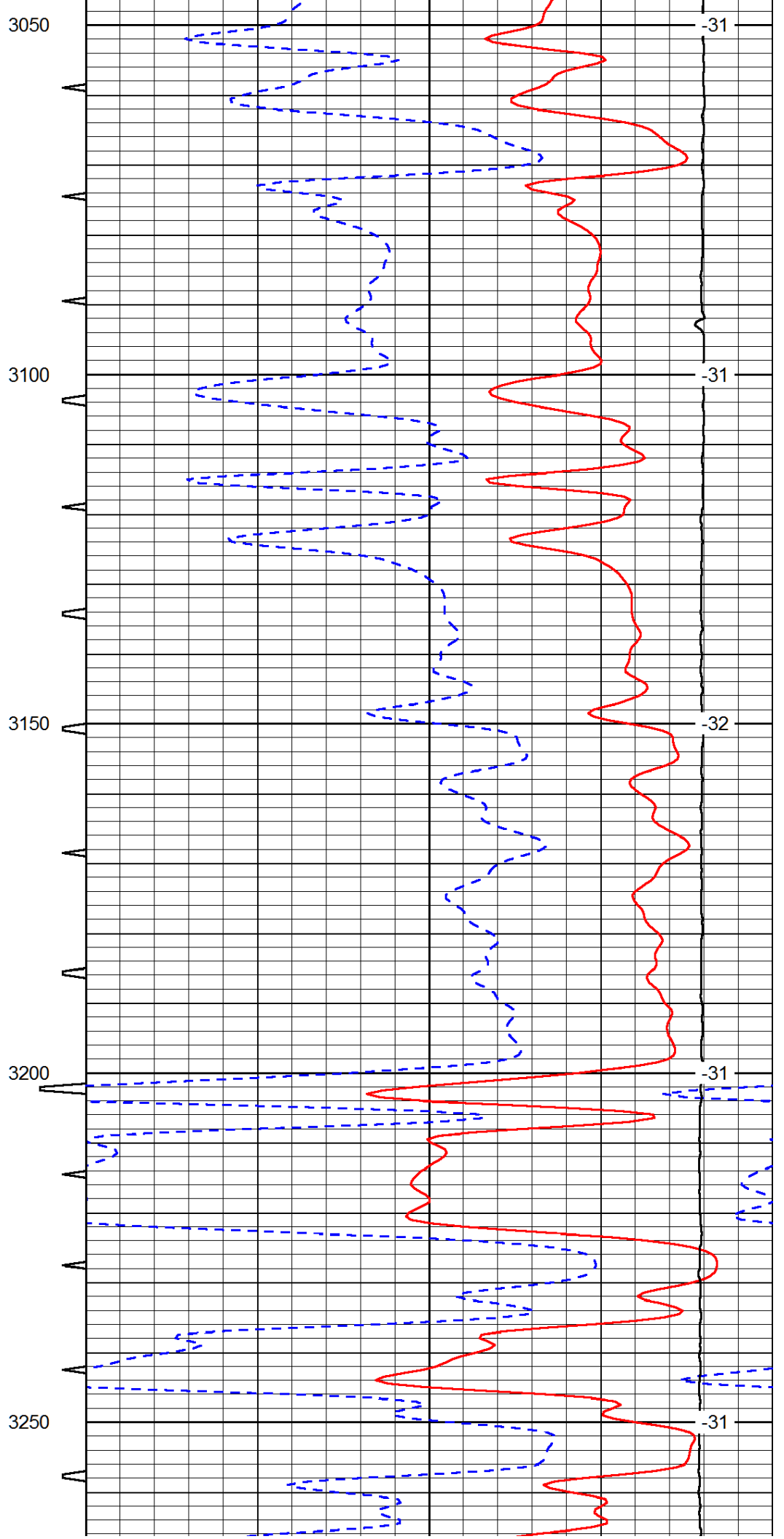
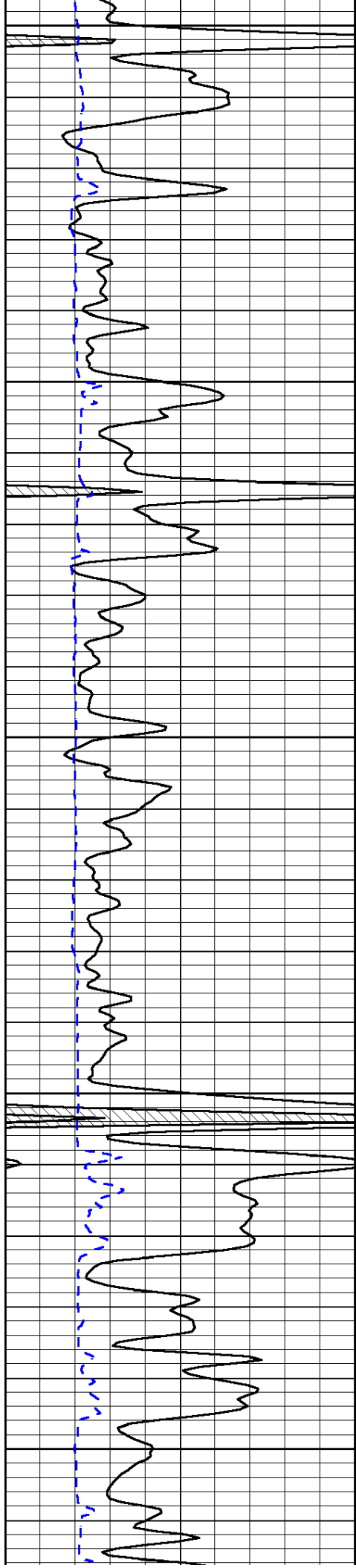


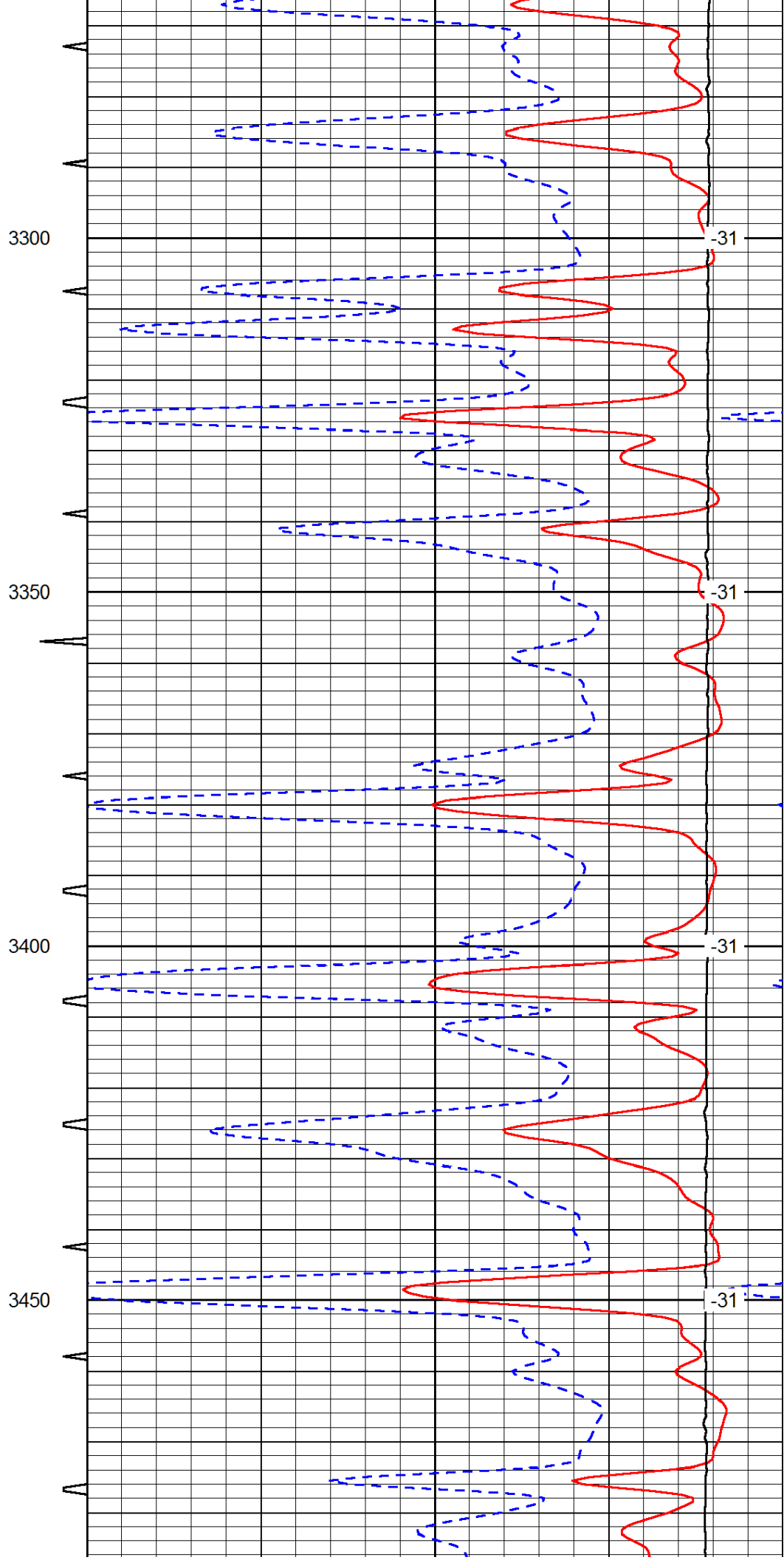
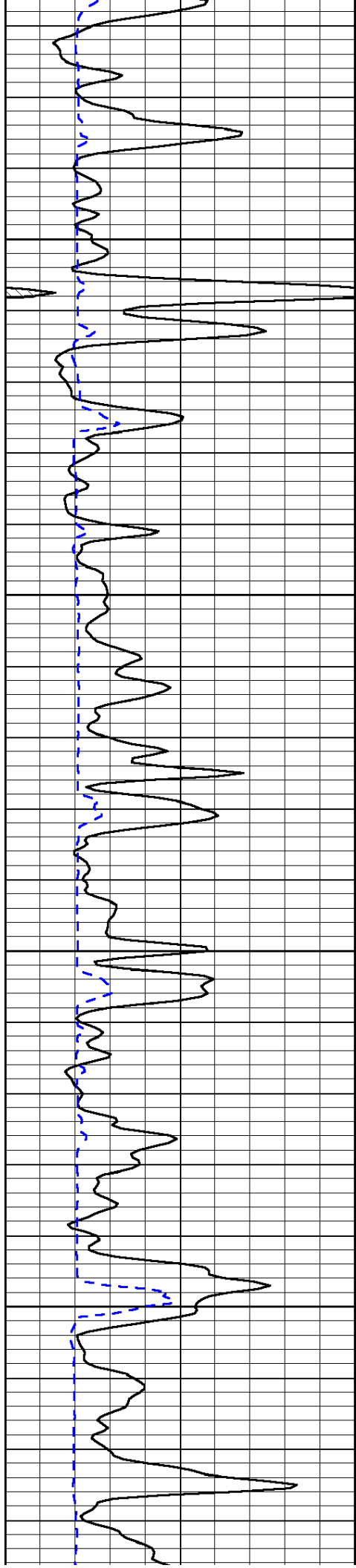


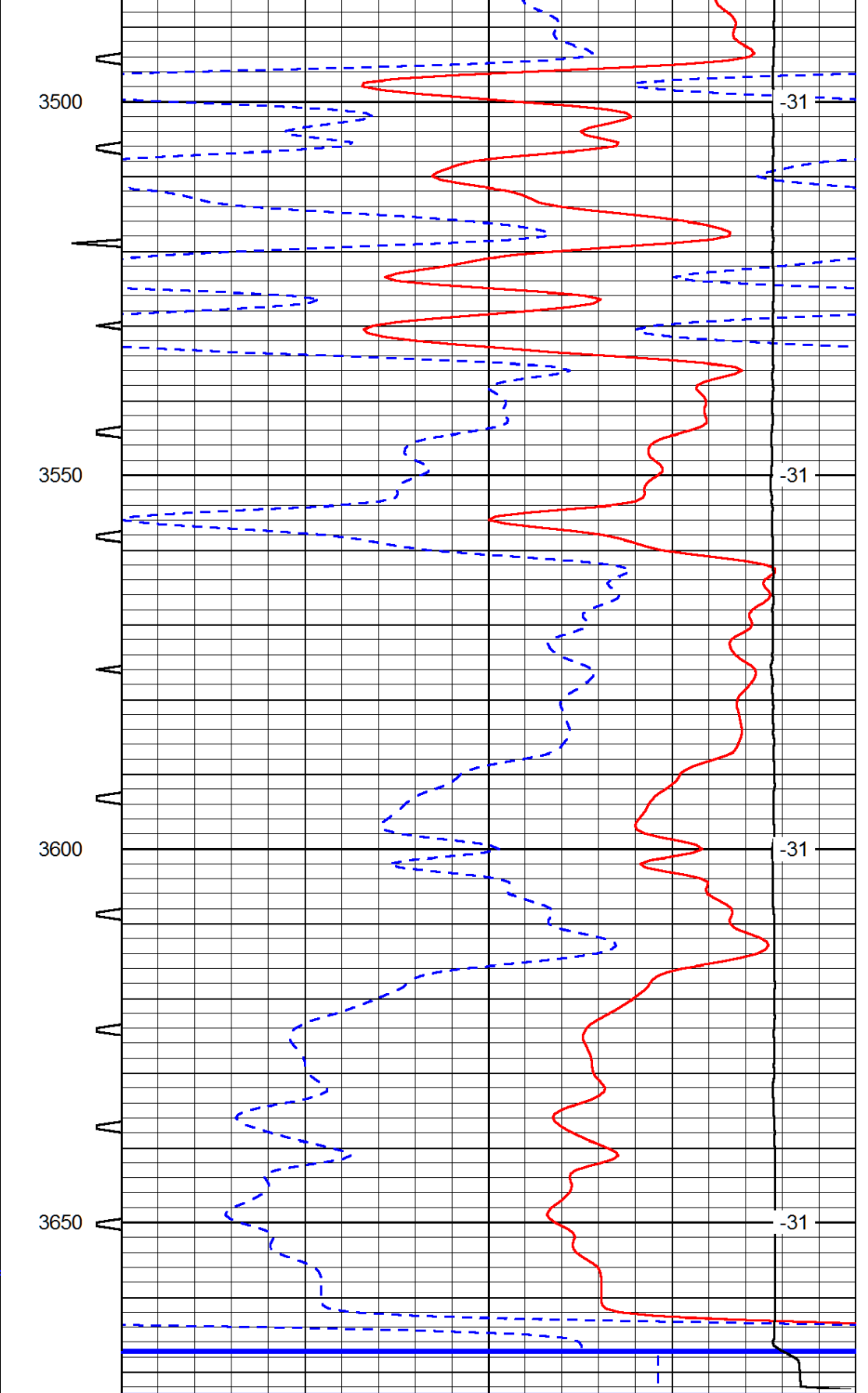
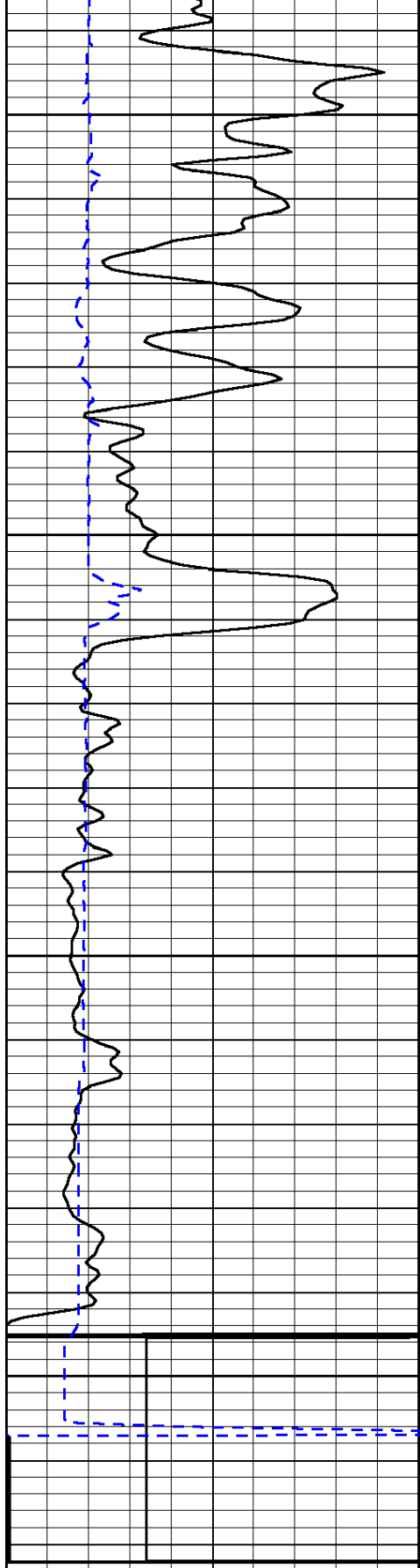












0	Gamma Ray (GAPI)	150	Sonic Int	140	Delta Time (usec/ft) (usec/ft)	40
150	Gamma Ray (GAPI)	300	5 (msec) 0	30	Sonic Porosity (pu)	-10
6	dCAL (in)	16		15000	LTEN (lb) (lb)	0

LSPD  
(ft/min)