



Pioneer Energy Services

# Dual Induction Log

API No.	15-051-26471-00-00		
Company	Murfin Drilling Co. Inc.	Location	SW NE SE NE 1700' FNL / 400' FEL
Well	Werth Trust #1-26	County	Ellys
Field	Martina	State	Kansas
Sec:	26	Twp:	15S
		Rge:	19W
Other Services	CNL / CDL MEL / BHCS		

Permanent Datum	Ground Level	Elevation	1955
Log Measured From	Kelly Bushing	11 Ft. Above Perm. Datum	
Drilling Measured From	Kelly Bushing		
Date	2/3/2013		
Run Number	One		
Depth Driller	3670		
Depth Logger	3668		
Bottom Logged Interval	3667		
Top Log Interval	0		
Casing Driller	8.625 @ 1150		
Casing Logger	1149		
Bit Size	7.875		
Type Fluid in Hole	Chemical		
Salinity, ppm CL	8800		
Density / Viscosity	9.2	75	
pH / Fluid Loss	10.5	7.6	
Source of Sample	Flowline		
Rm @ Meas. Temp	0.42	@ 52	
Rmf @ Meas. Temp	0.32	@ 52	
Rmc @ Meas. Temp	0.57	@ 52	
Source of Rmf / Rmc	Charts		
Rm @ BHT	0.19	@ 113	
Operating Rig Time	4 Hours		
Max Rec. Temp. F	113		
Equipment Number	17		
Location	Hays		
Recorded By	R. Barnhart		
Witnessed By	Robert Hendrix		

<<< Fold Here >>>

All interpretations are opinions based on inferences from electrical or other measurements and we cannot and do not guarantee the accuracy or correctness of any interpretation, and we shall not, except in the case of gross or willful negligence on our part, be liable or responsible for any loss, costs, damages, or expenses incurred or sustained by anyone resulting from any interpretation made by any of our officers, agents or employees. These interpretations are also subject to our general terms and conditions set out in our current Price Schedule.

### Comments

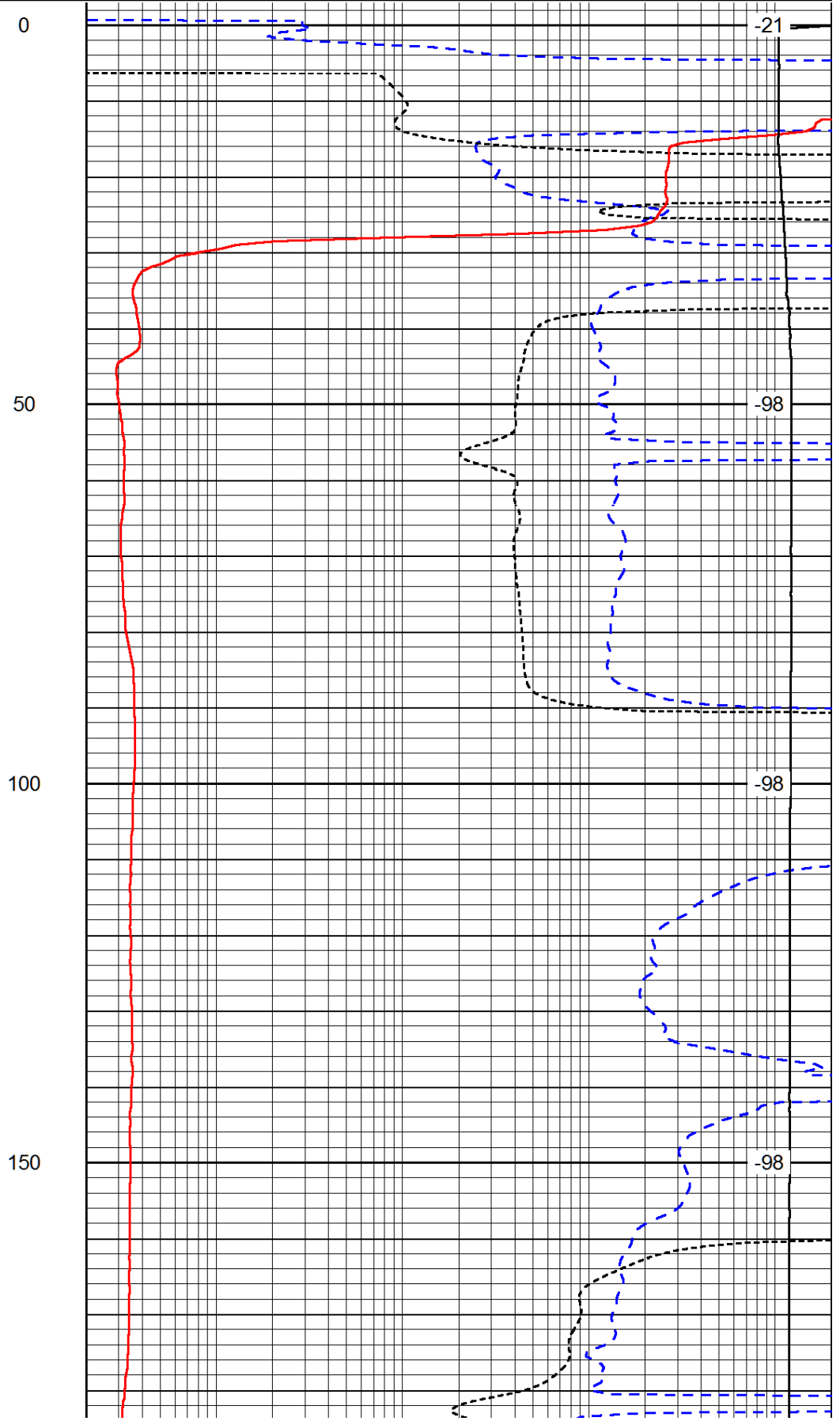
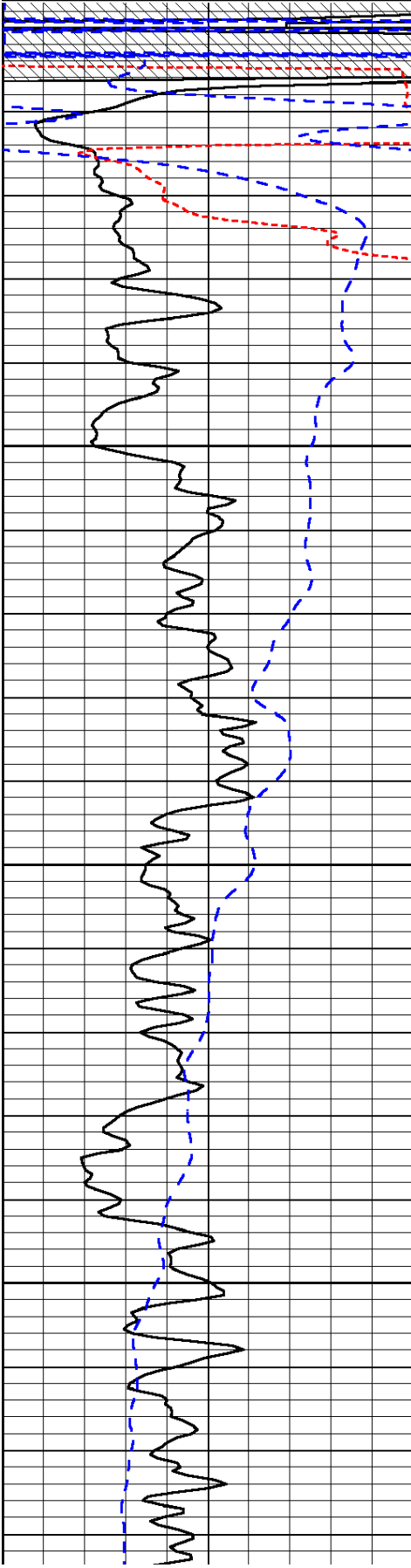
Thank you for using Log-Tech, Inc.  
(785) 625-3858

Schoenchen, KS:  
4W, 1/2N, W into

0	Gamma Ray (GAPI)	150
-160	RXO/RT	40
-200	SP (mV)	0

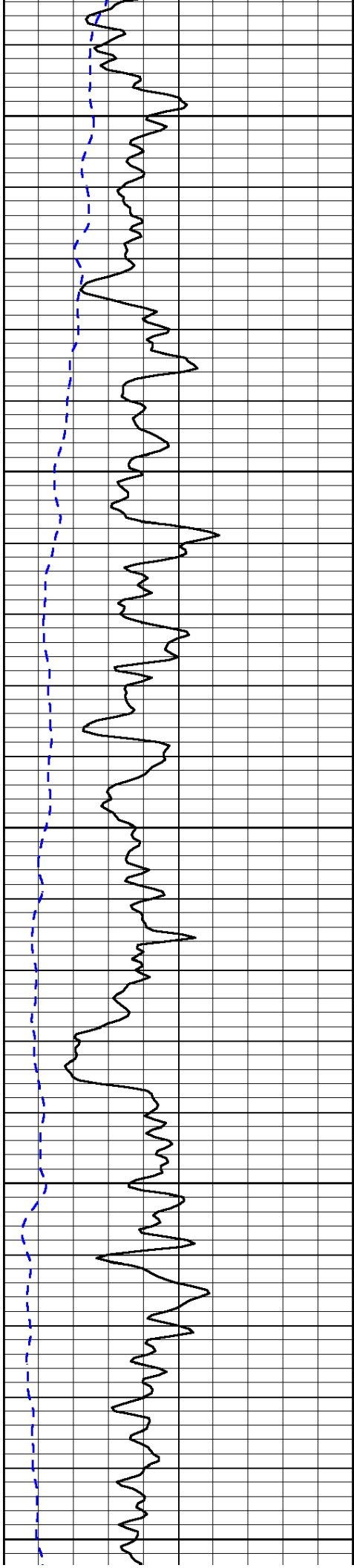
0.2	Deep Resistivity (Ohm-m)	2000
0.2	Medium Resistivity (Ohm-m)	2000
0.2	Shallow Resistivity (Ohm-m)	2000
10000	Line Tension (lb)	0

LSPD  
(ft/min)



0  
50  
100  
150

-21  
-98  
-98  
-98



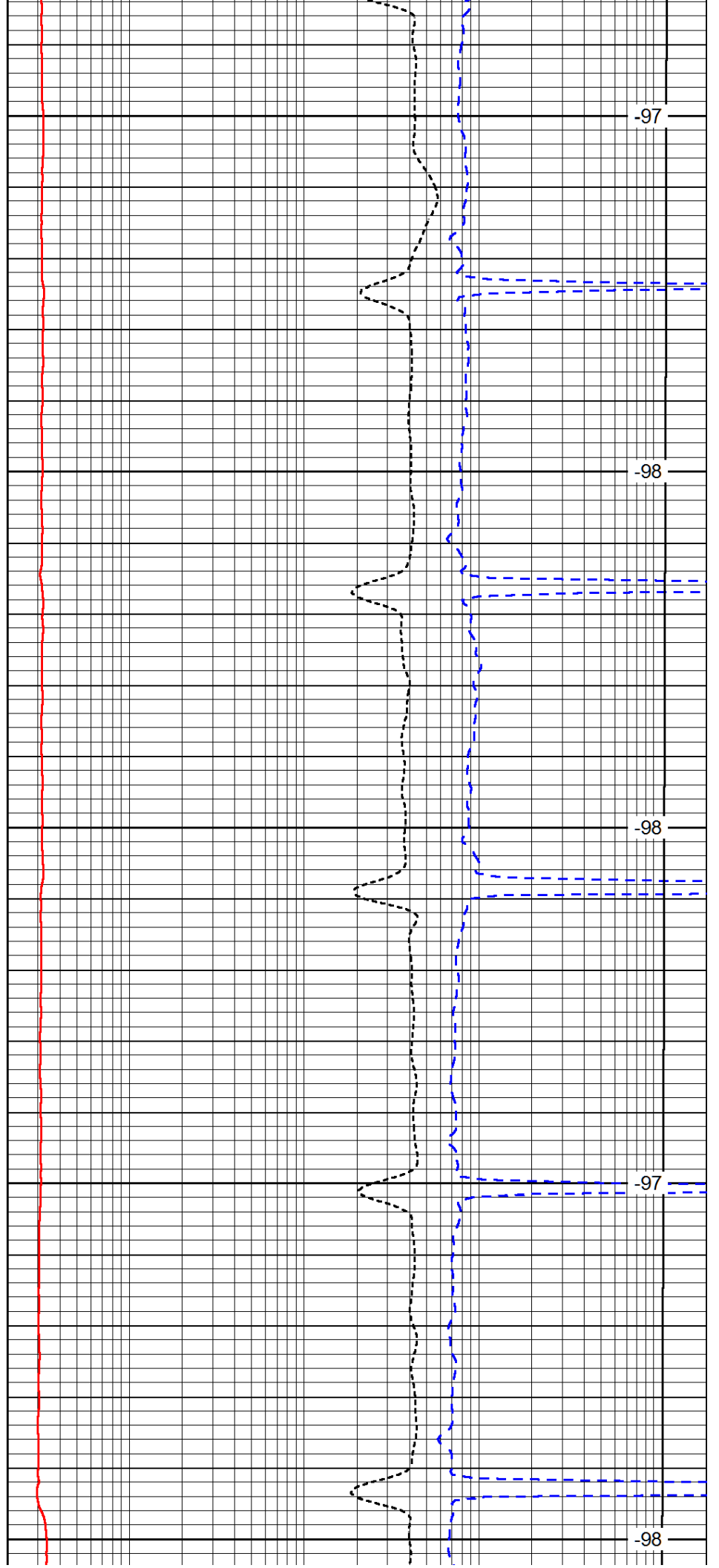
200

250

300

350

400



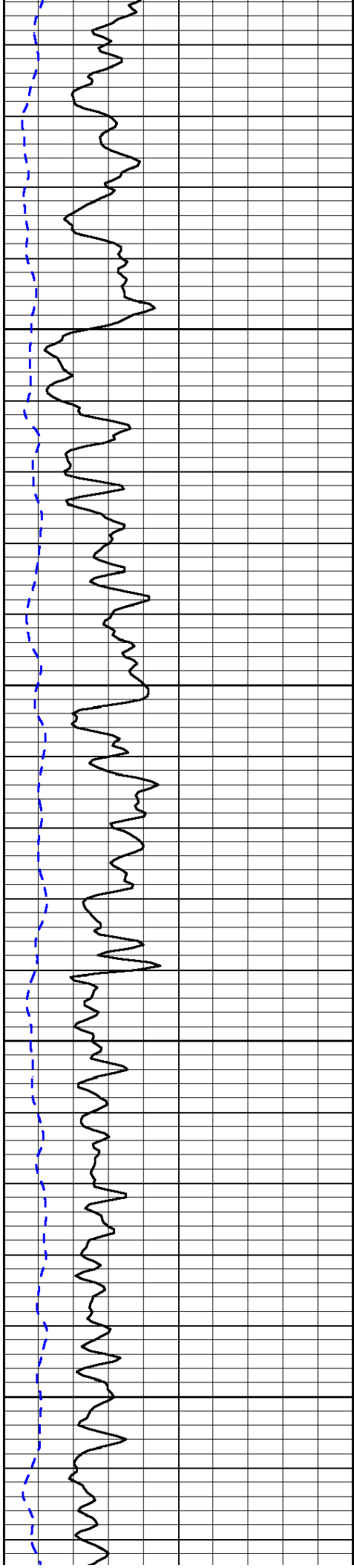
-97

-98

-98

-97

-98

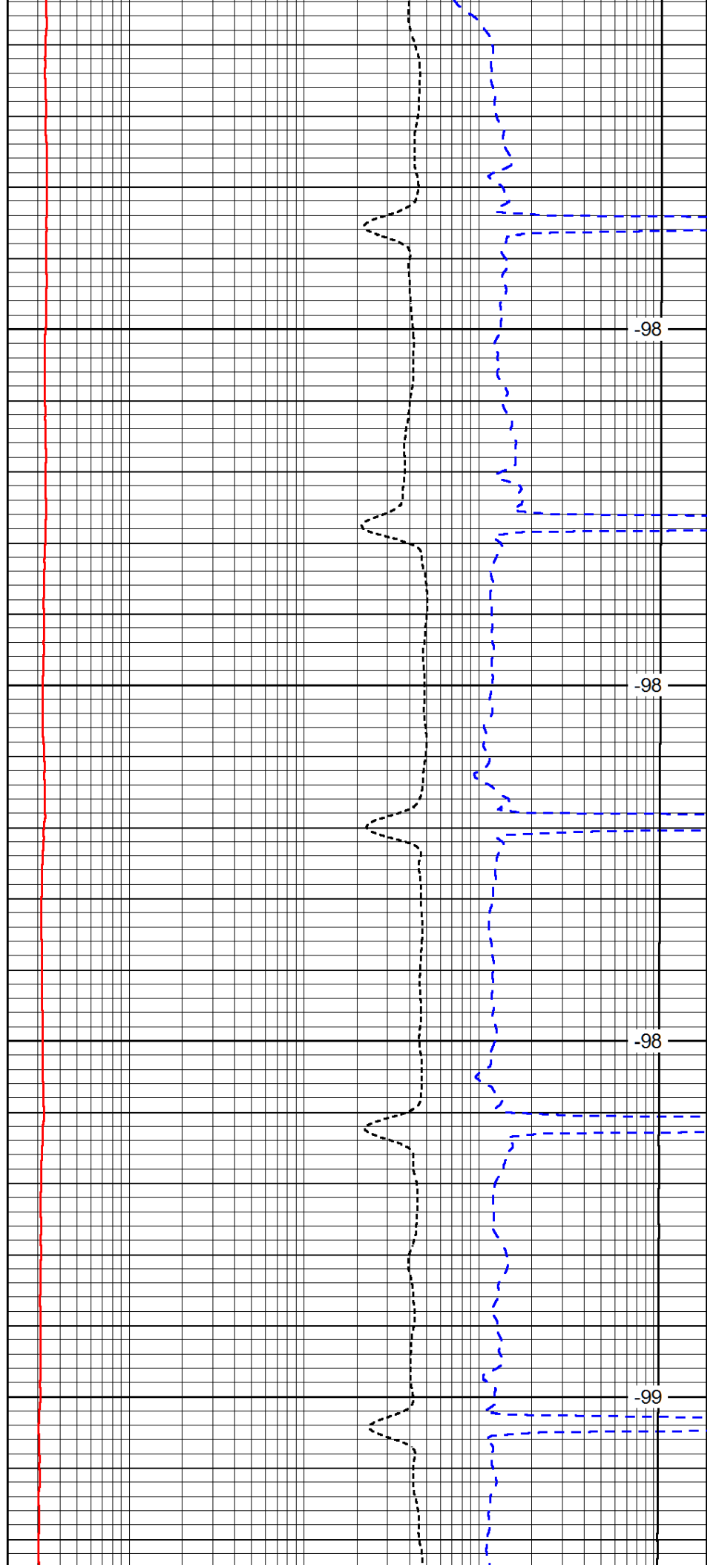


450

500

550

600

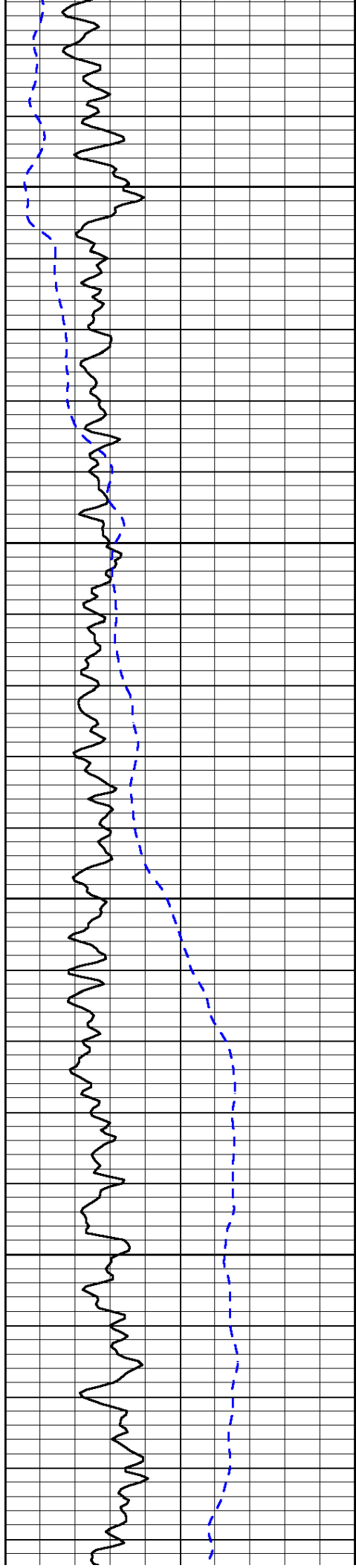


-98

-98

-98

-99

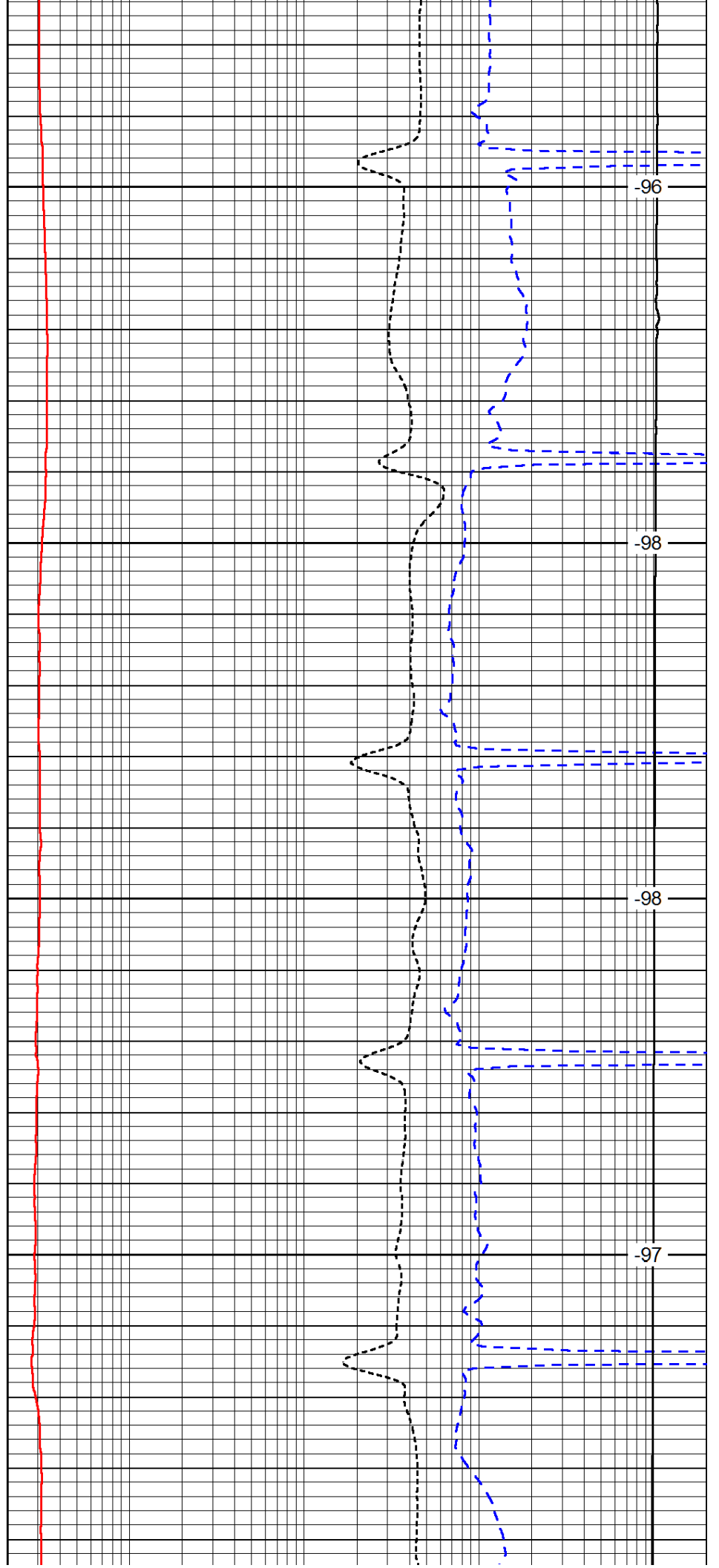


650

700

750

800

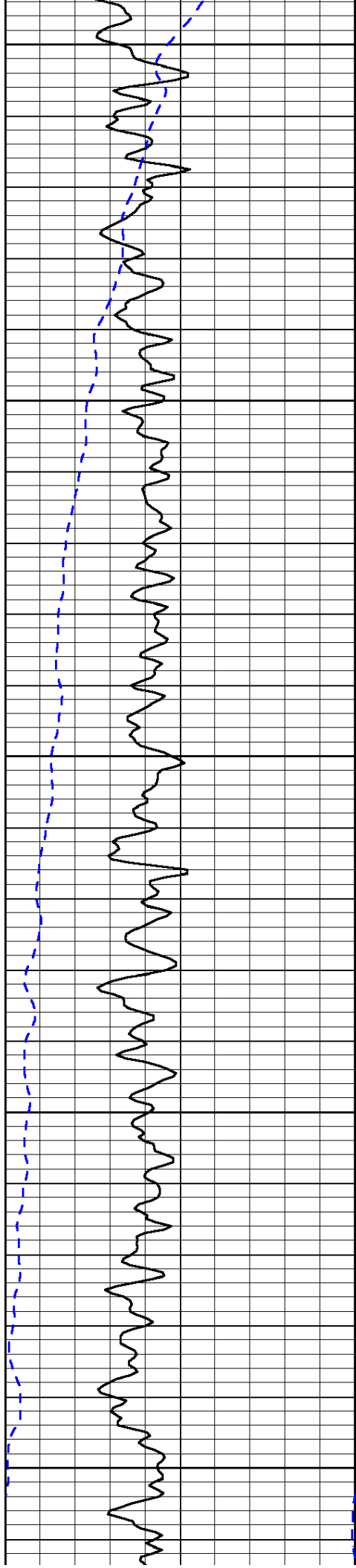


-96

-98

-98

-97



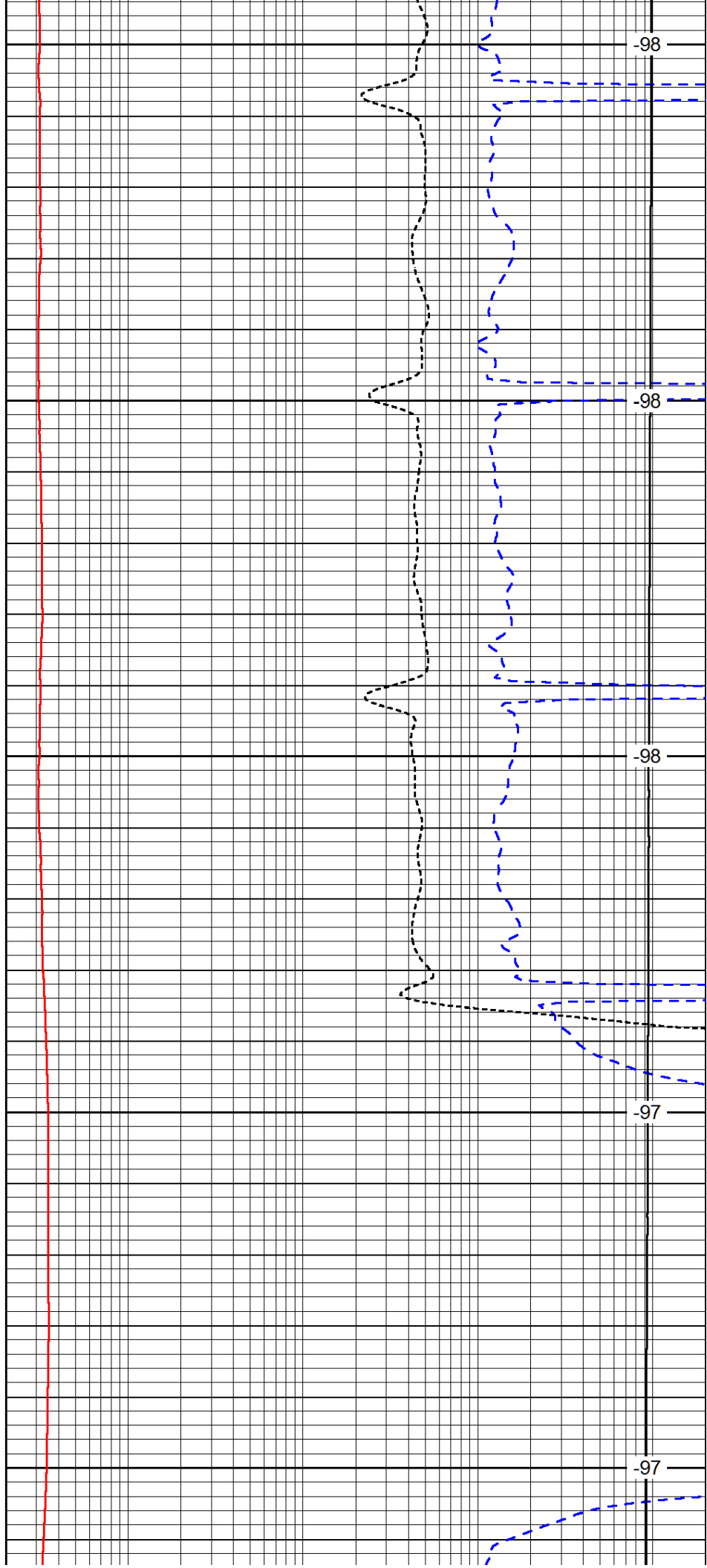
850

900

950

1000

1050



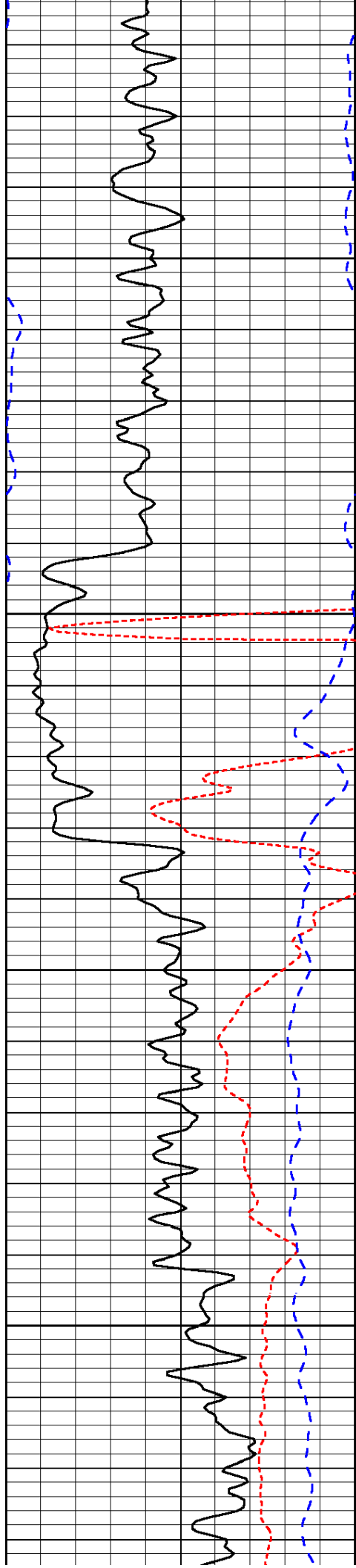
-98

-98

-98

-97

-97

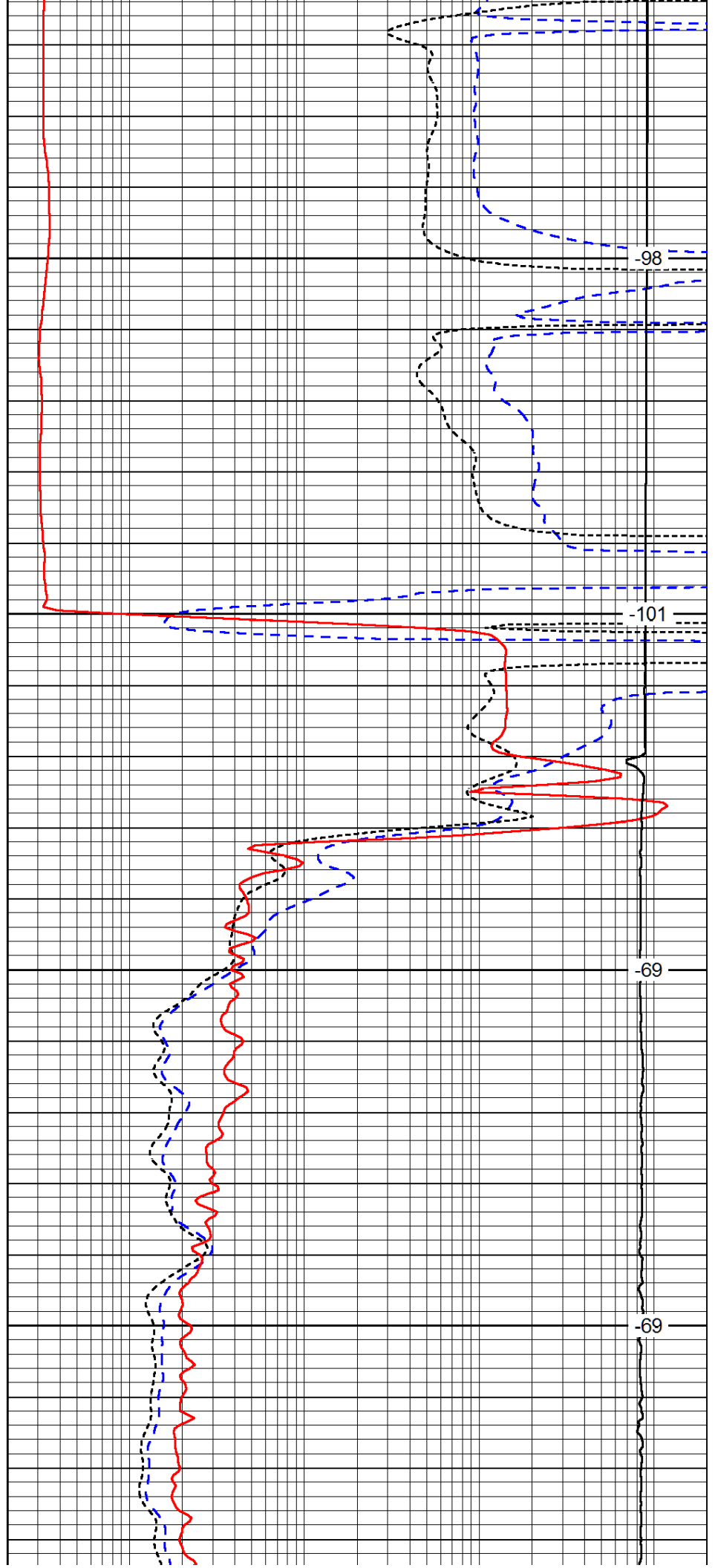


1100

1150

1200

1250

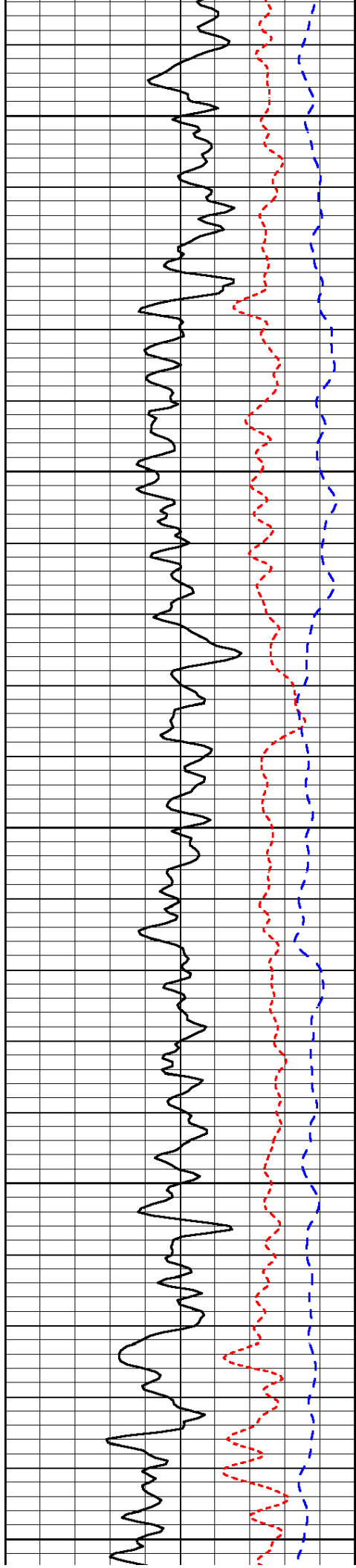


-98

-101

-69

-69



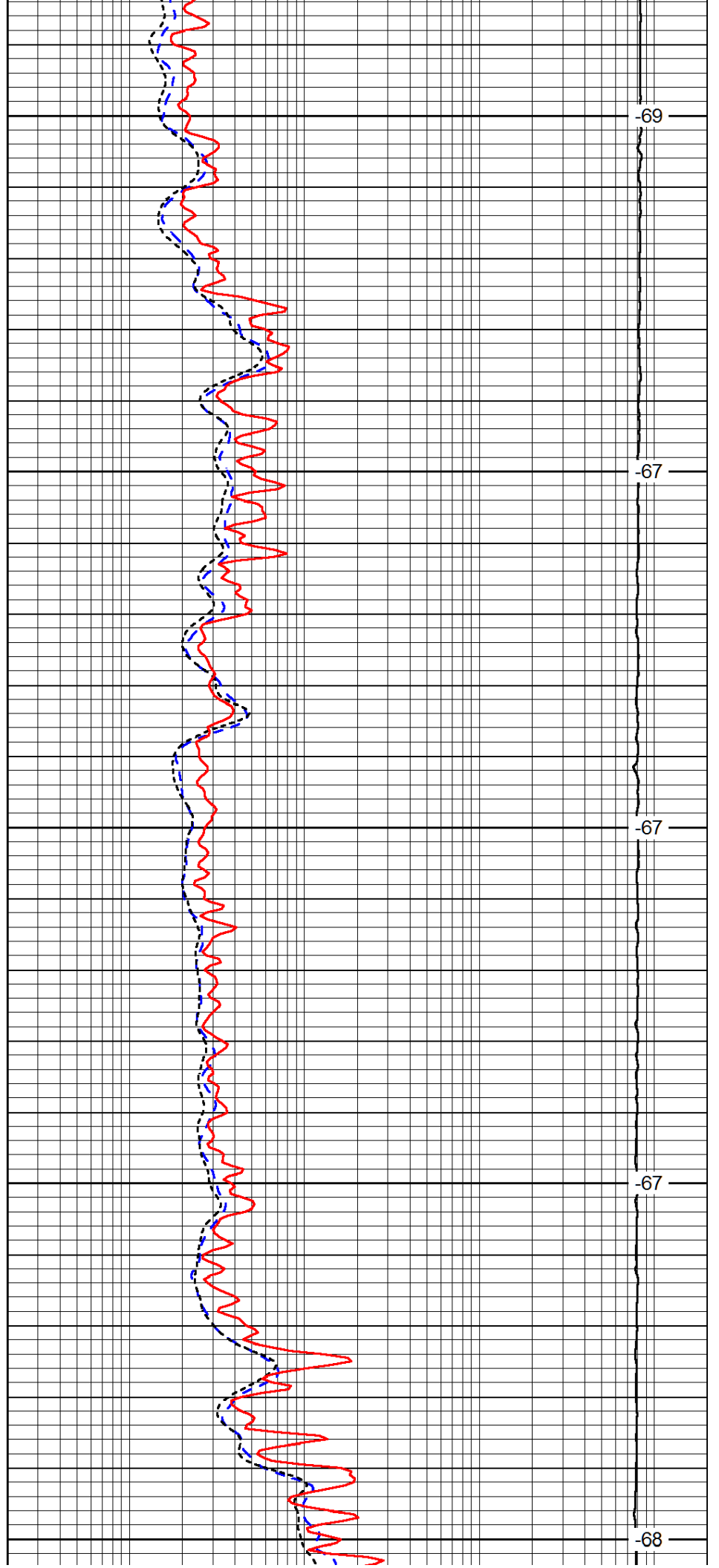
1300

1350

1400

1450

1500



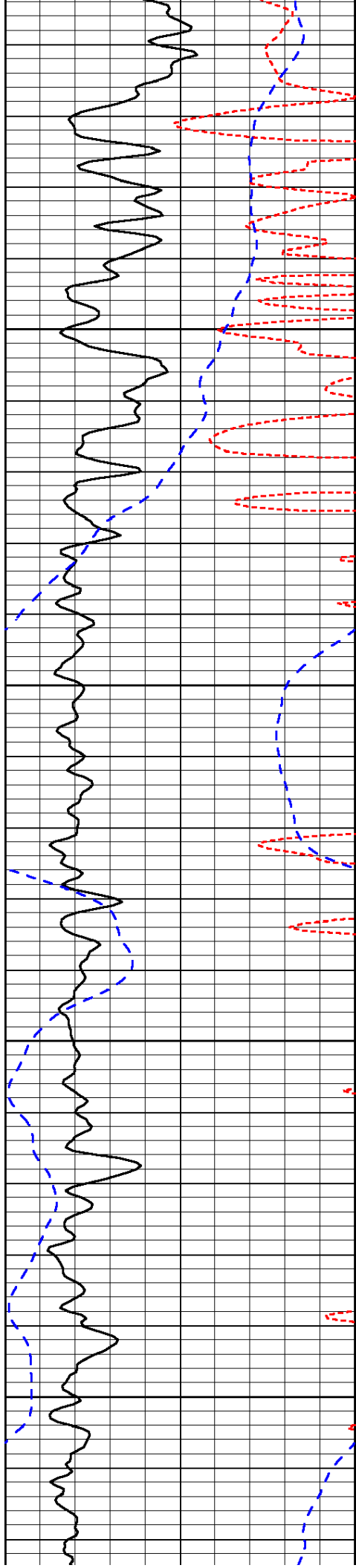
-69

-67

-67

-67

-68

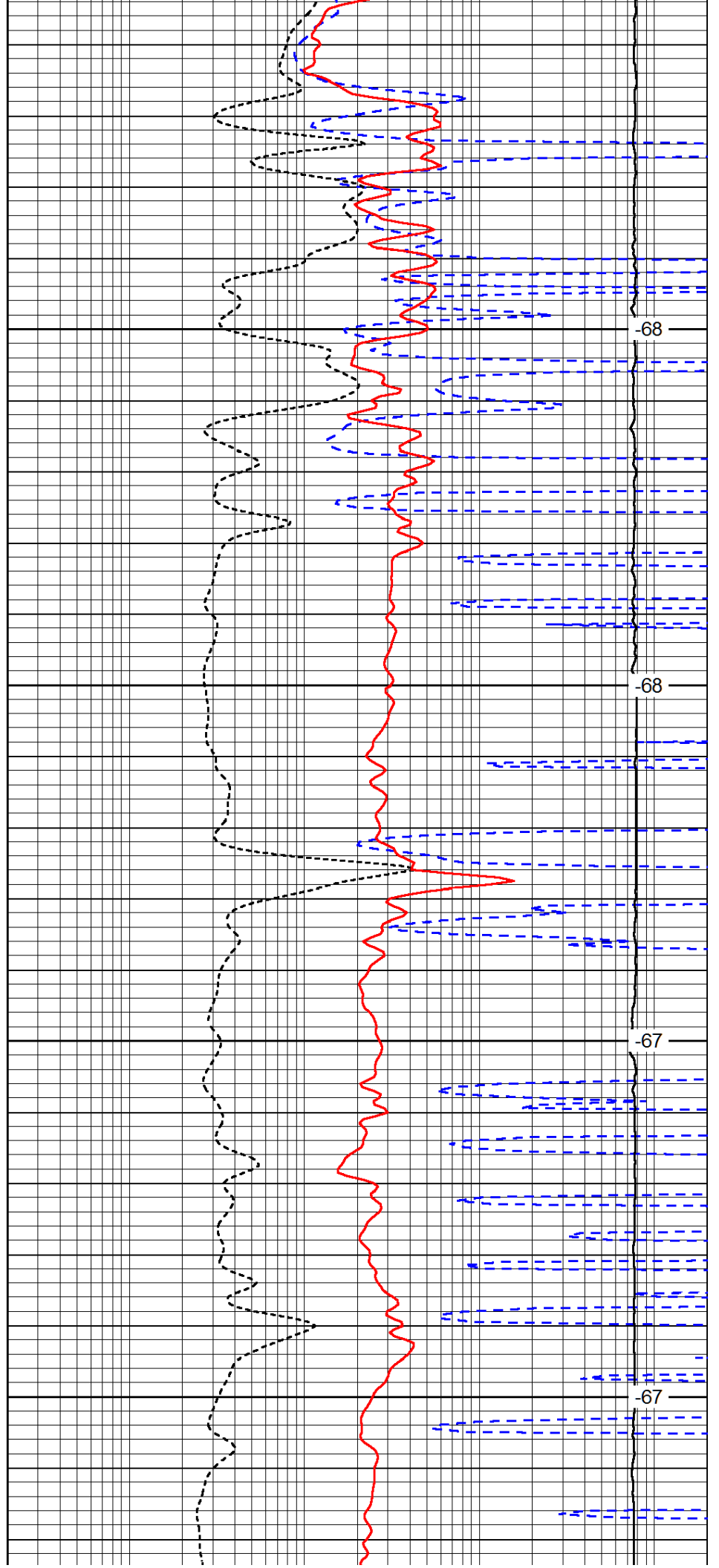


1550

1600

1650

1700

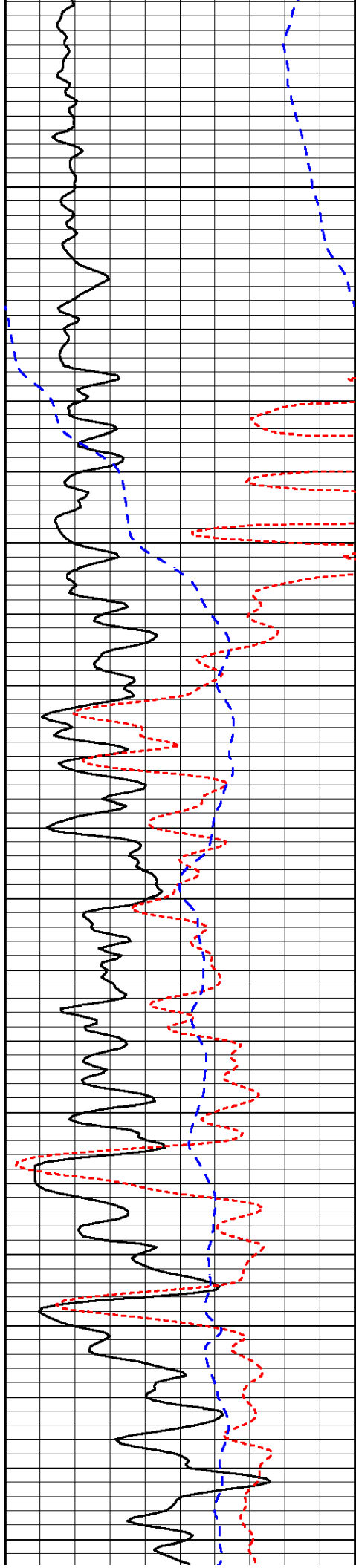


-68

-68

-67

-67

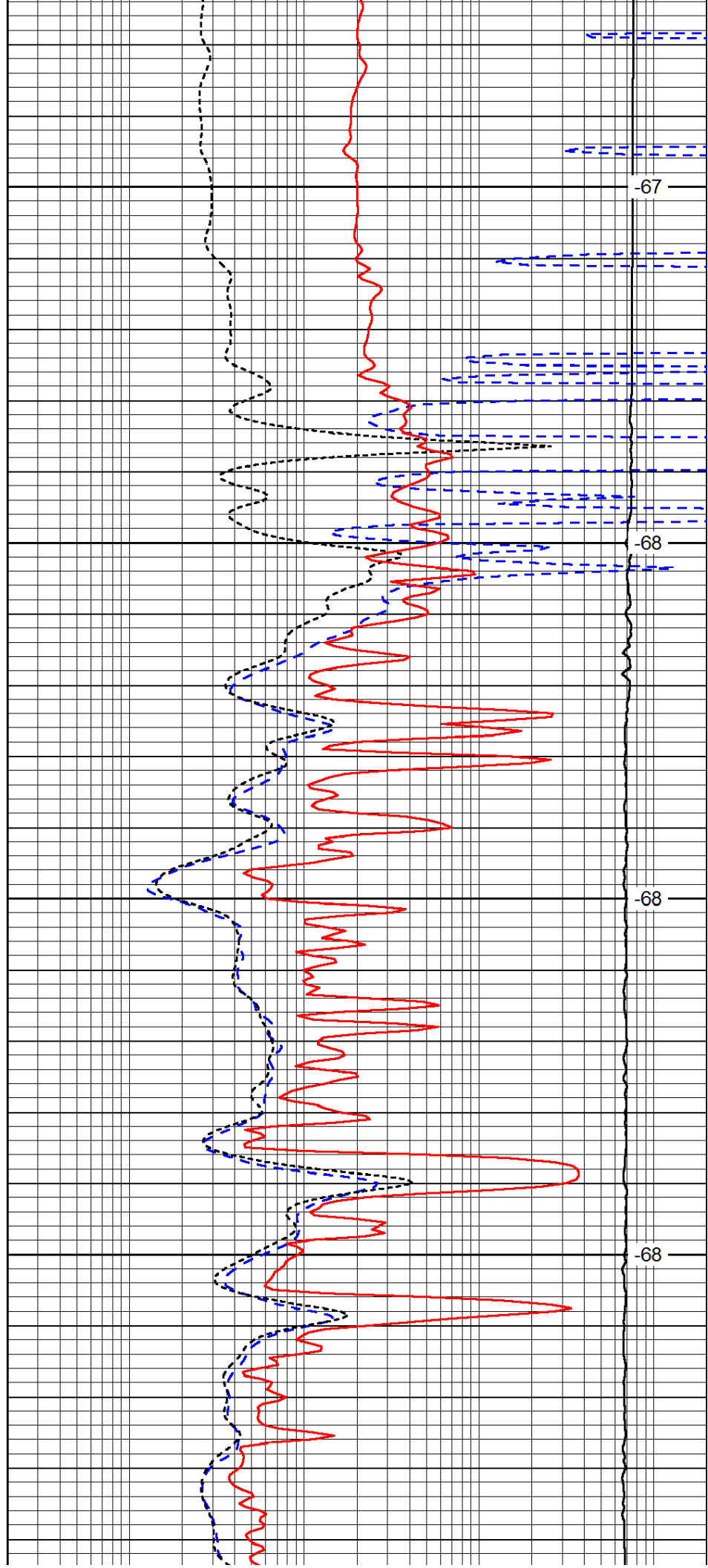


1750

1800

1850

1900

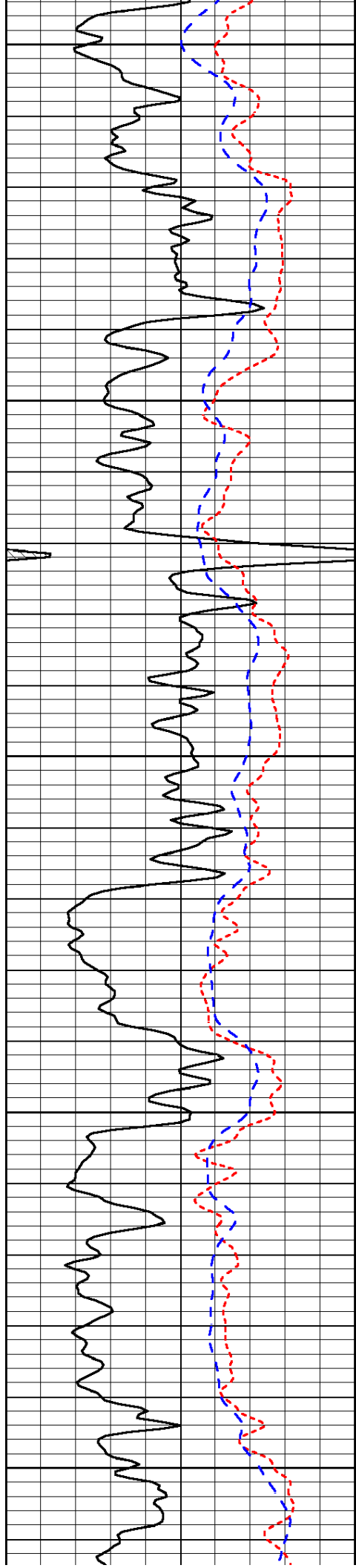


-67

-68

-68

-68



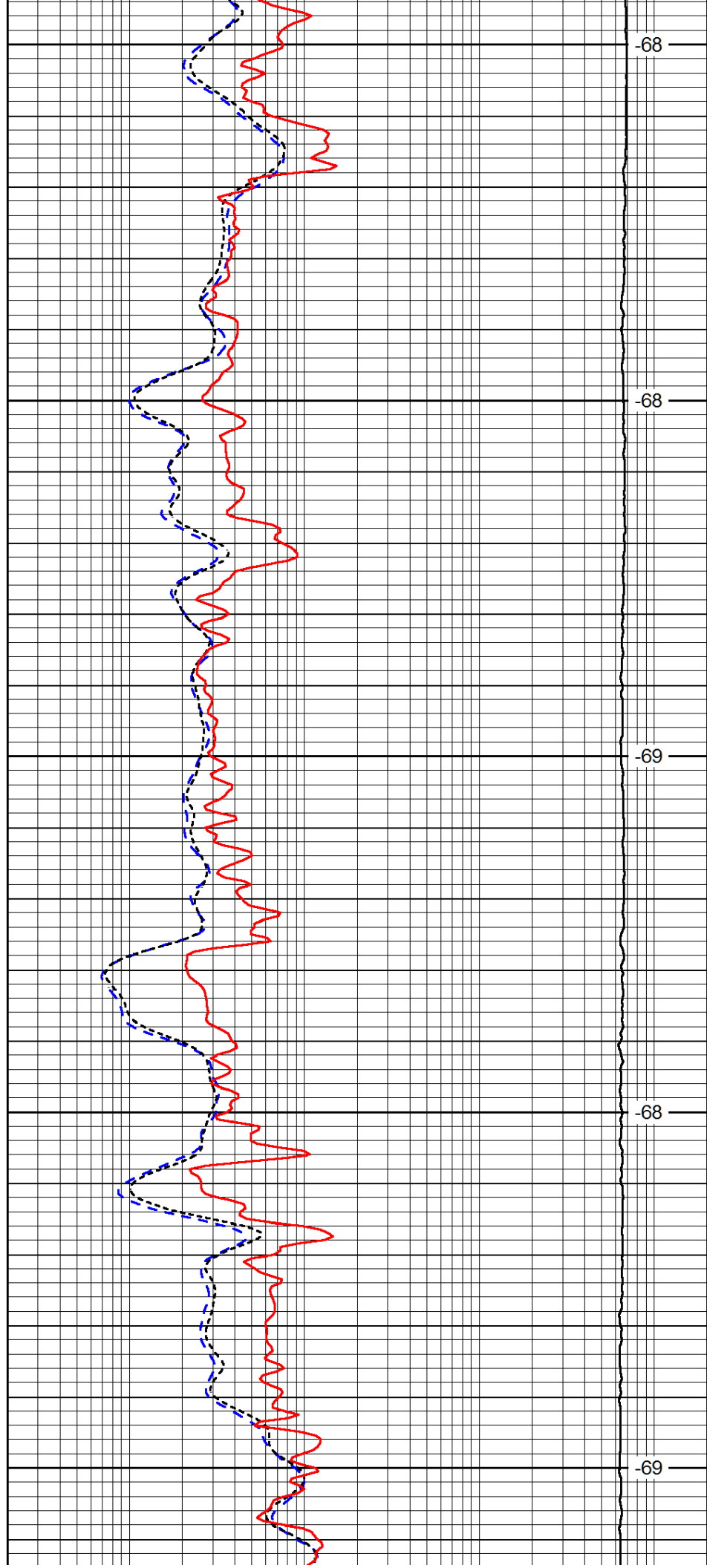
1950

2000

2050

2100

2150



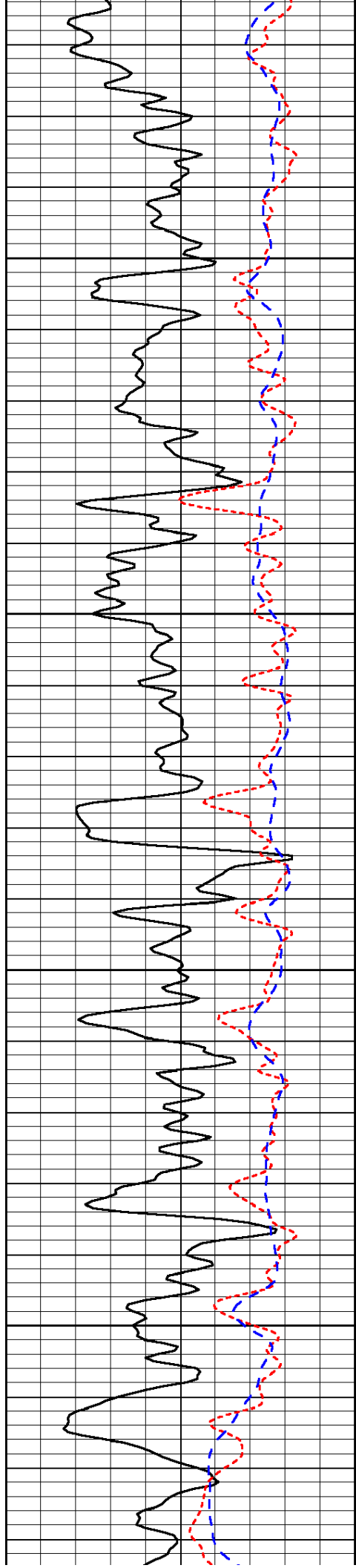
-68

-68

-69

-68

-69

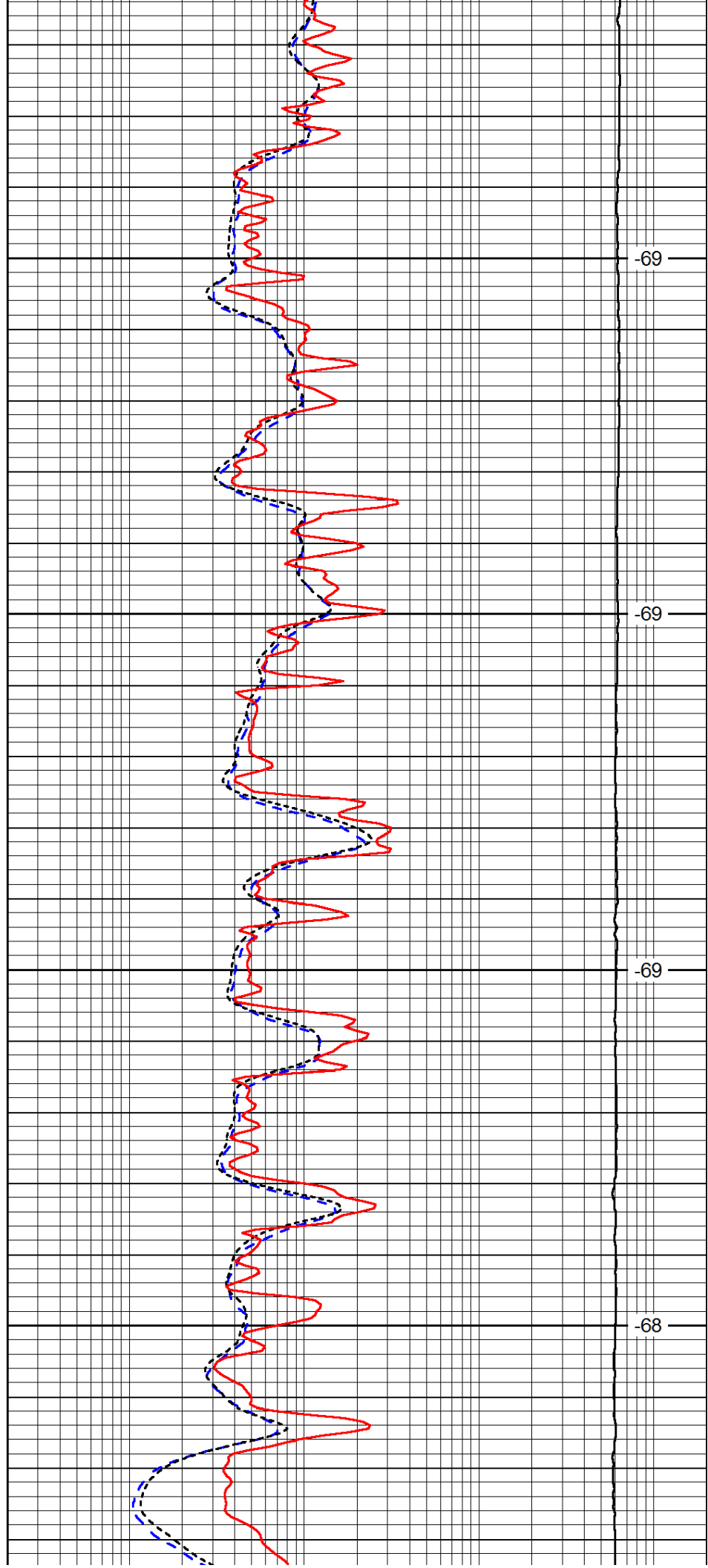


2200

2250

2300

2350

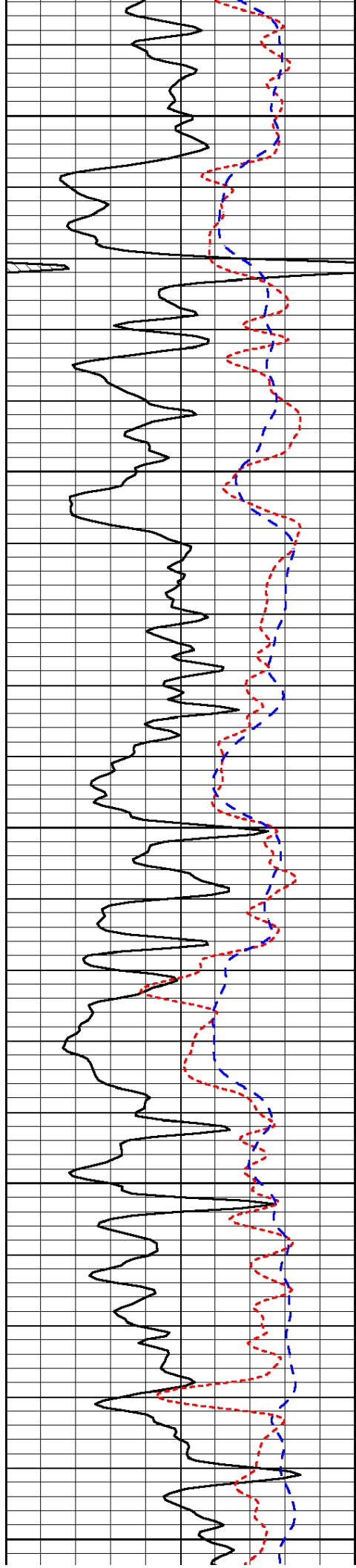


-69

-69

-69

-68



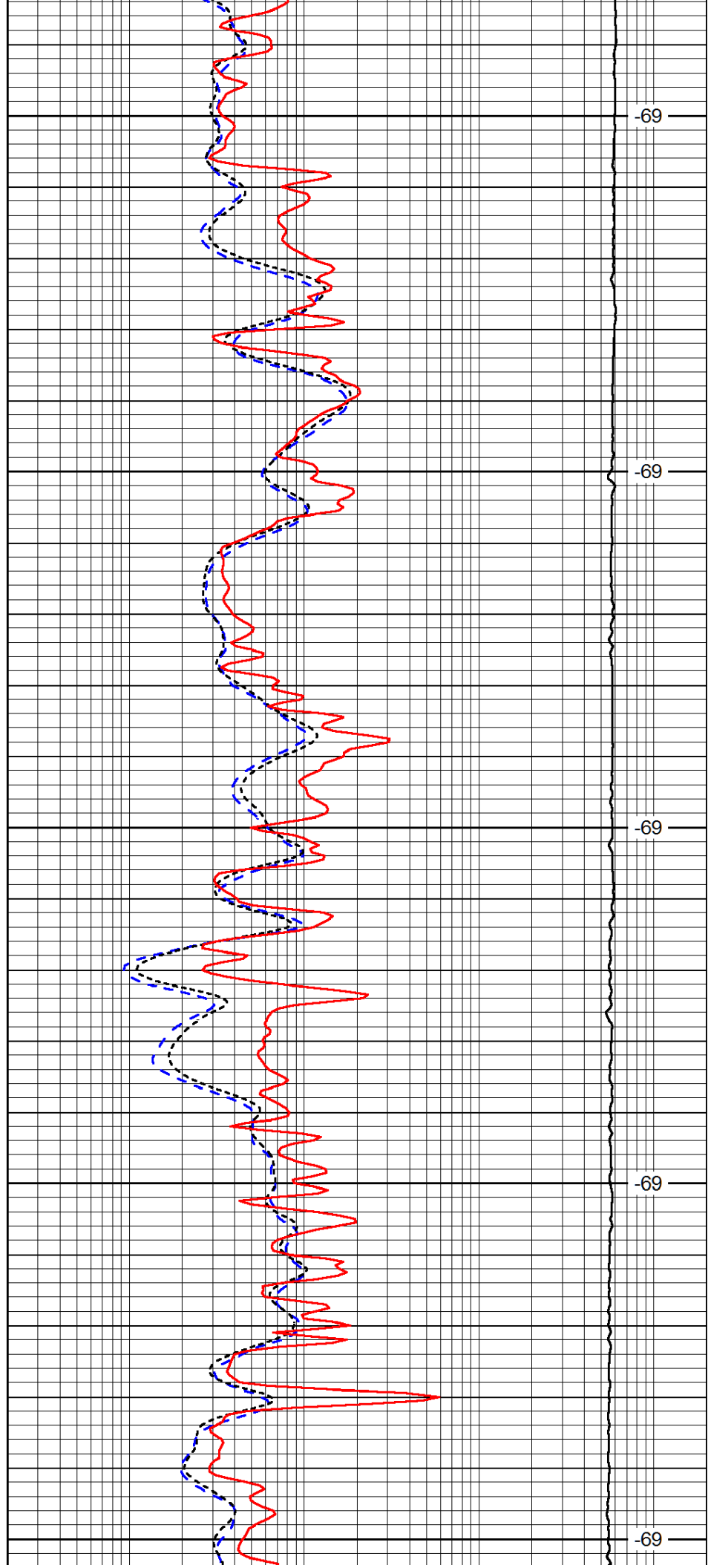
2400

2450

2500

2550

2600



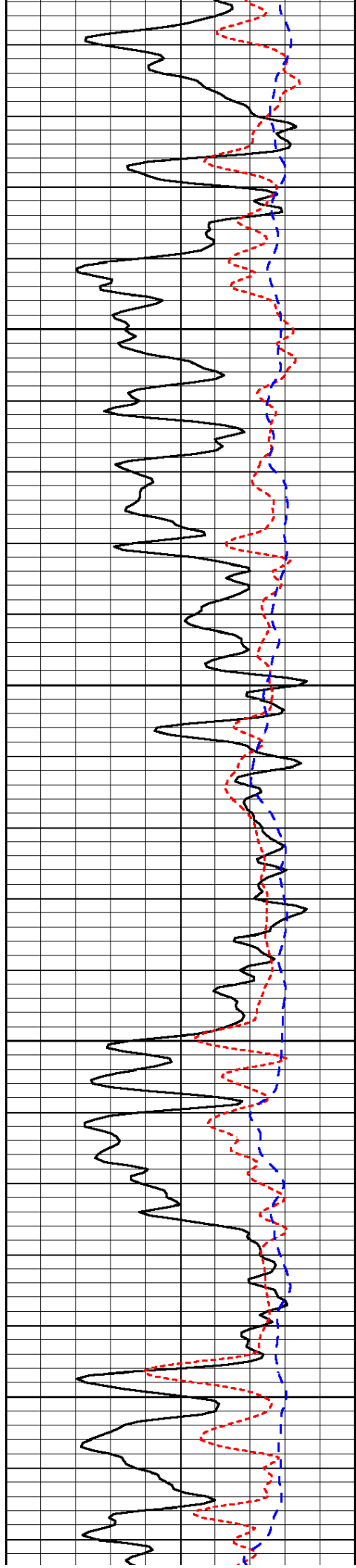
-69

-69

-69

-69

-69

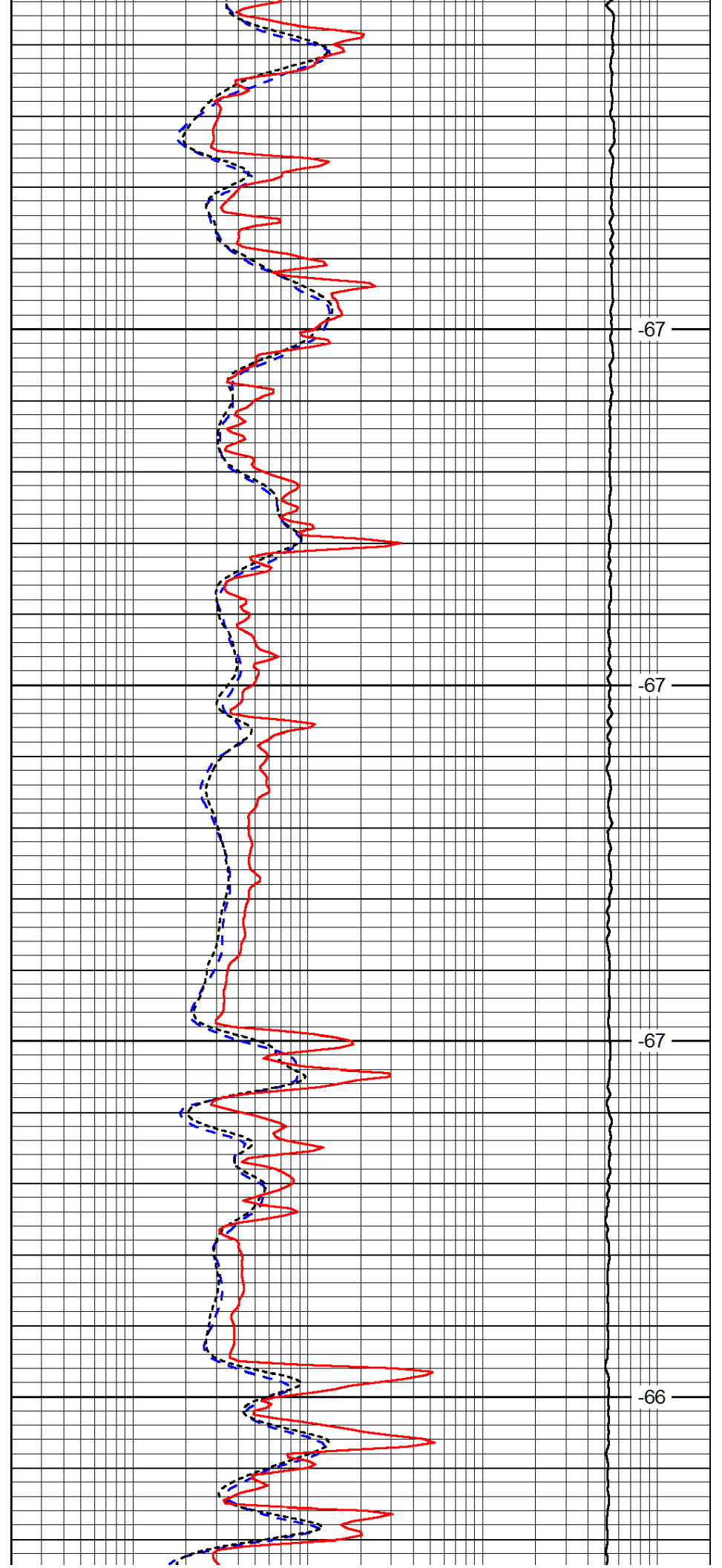


2650

2700

2750

2800

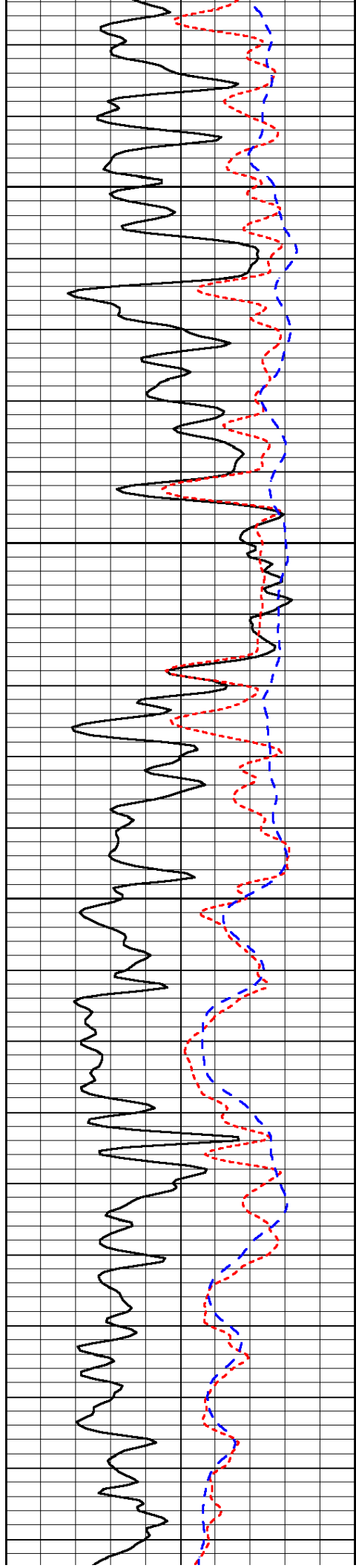


-67

-67

-67

-66

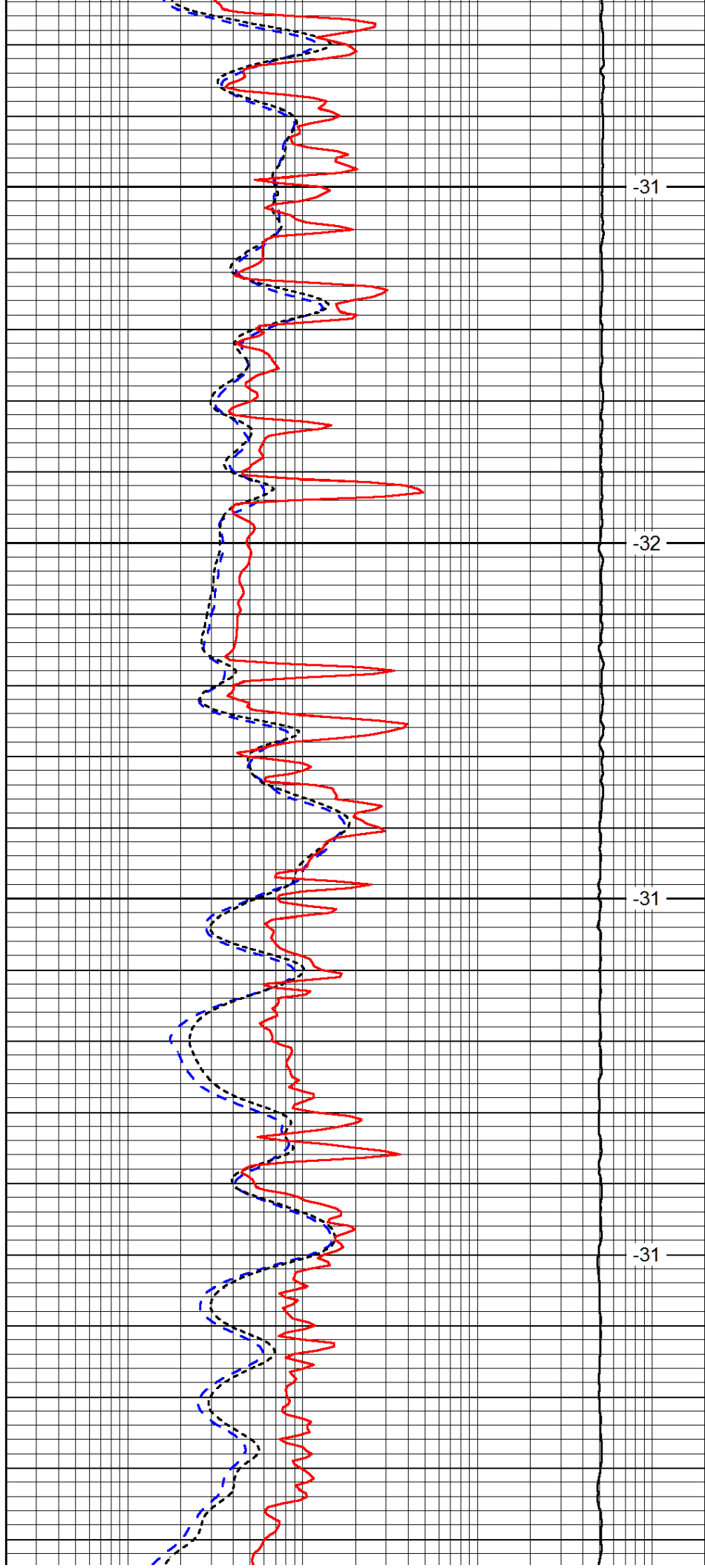


2850

2900

2950

3000

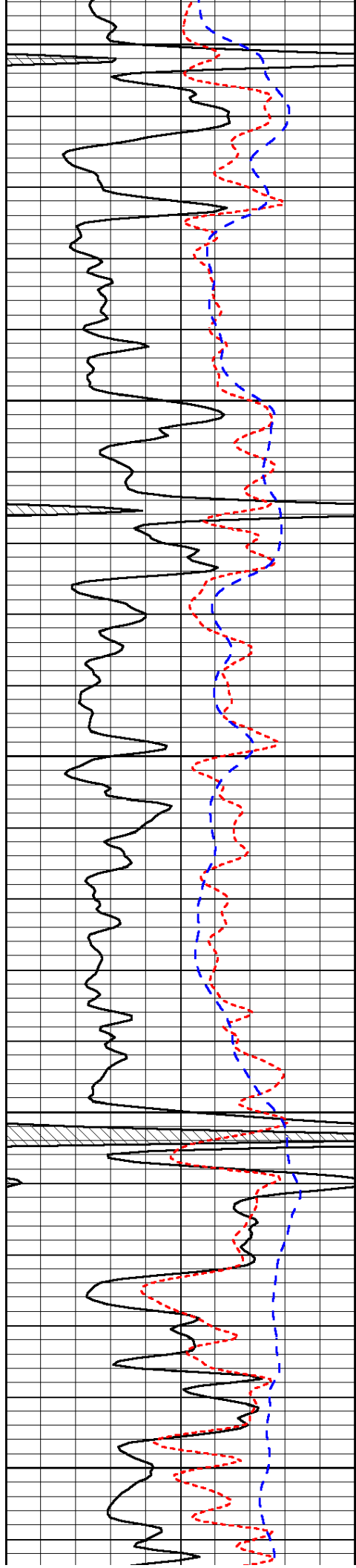


-31

-32

-31

-31



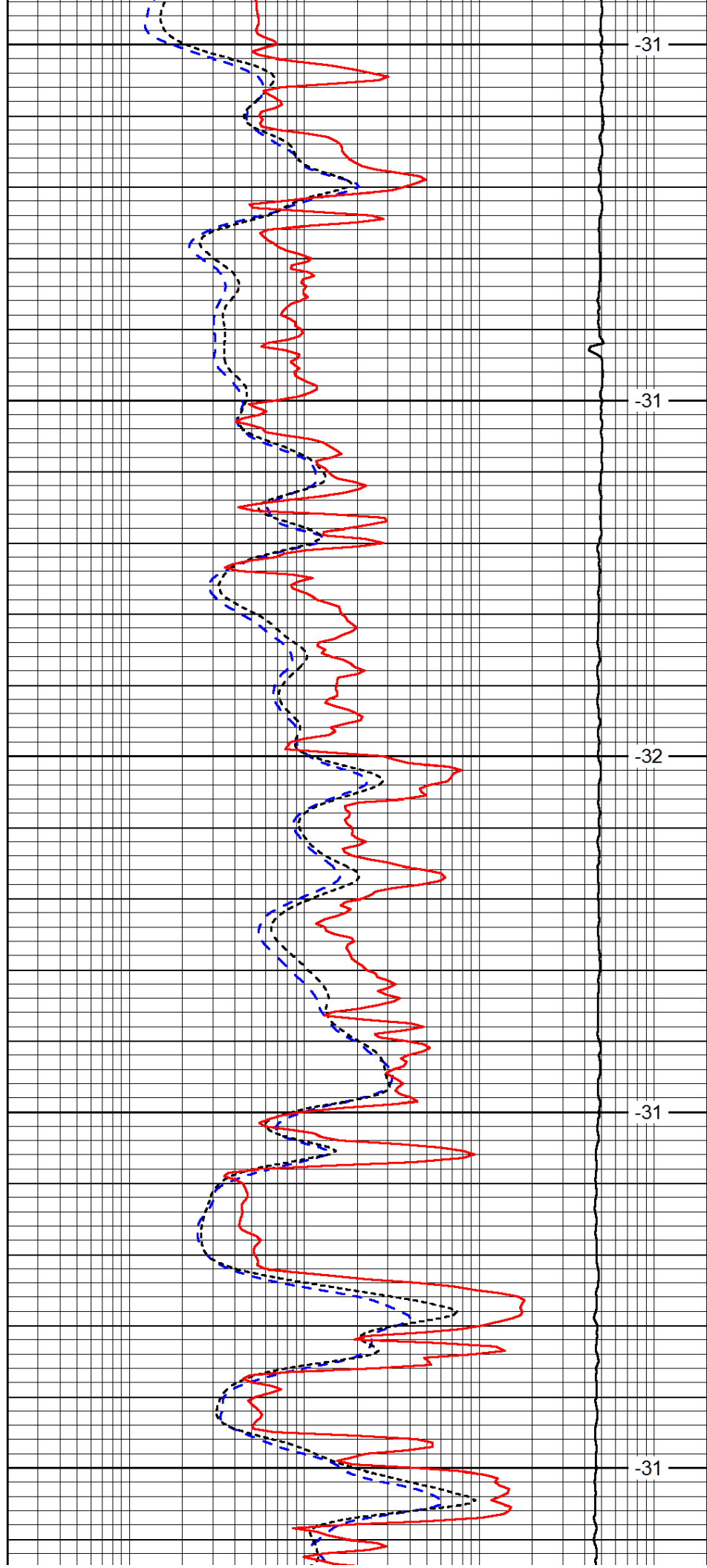
3050

3100

3150

3200

3250



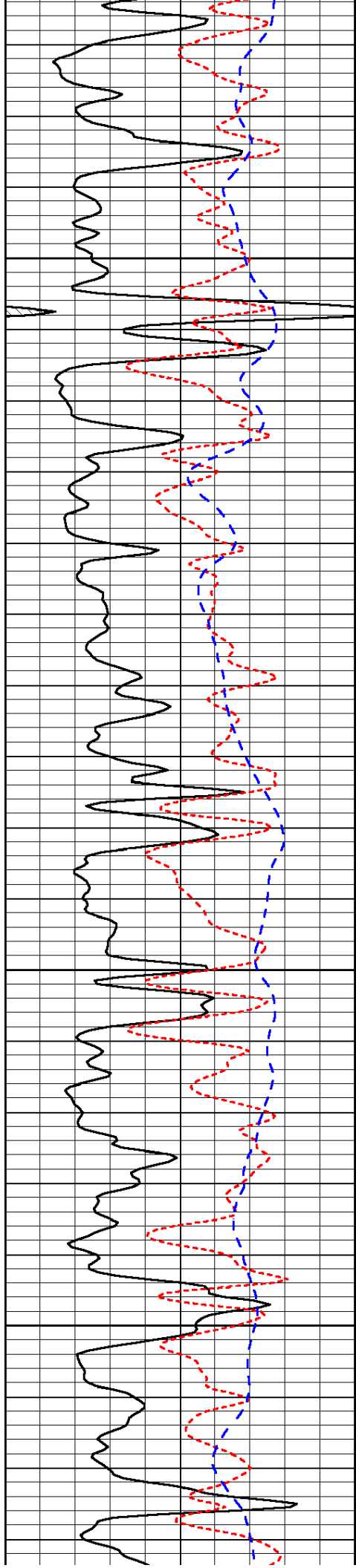
-31

-31

-32

-31

-31

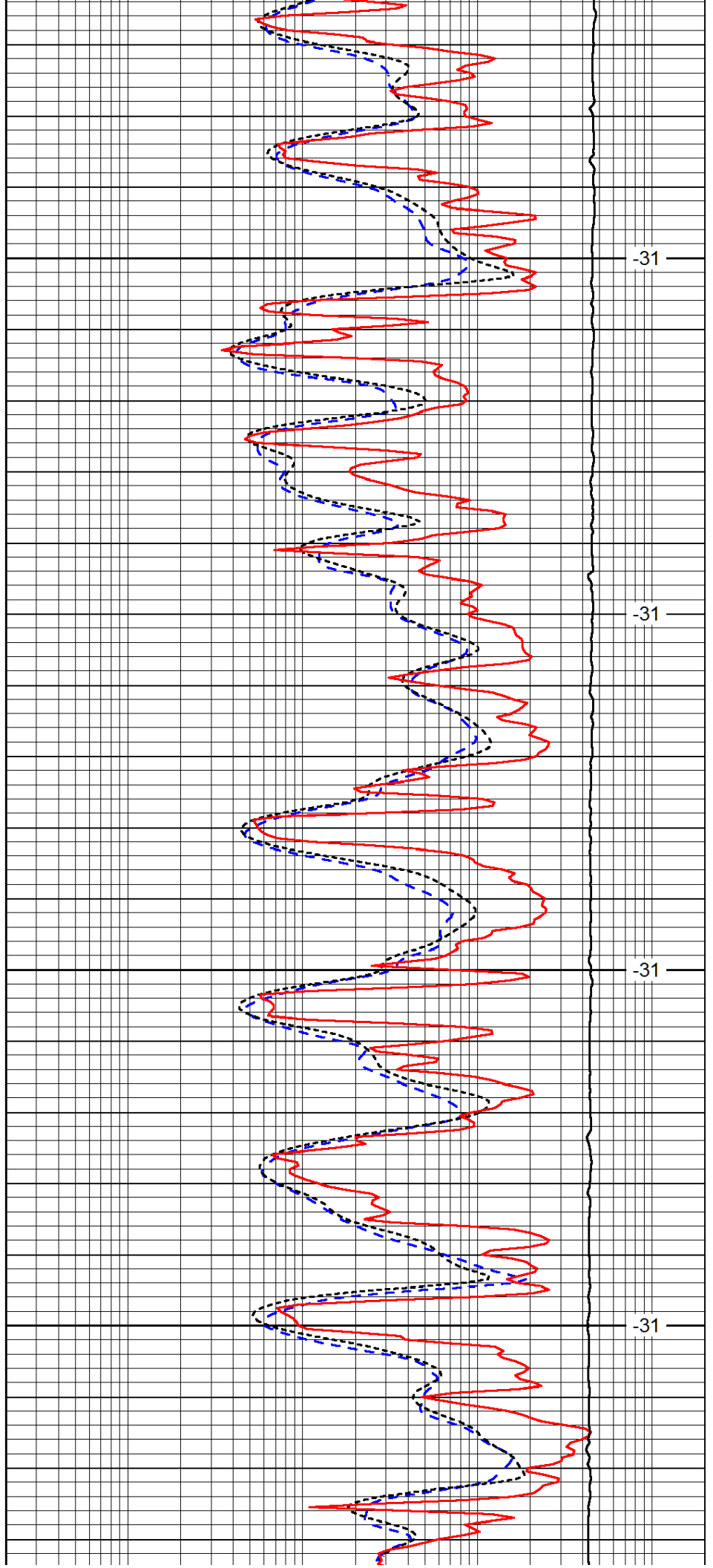


3300

3350

3400

3450

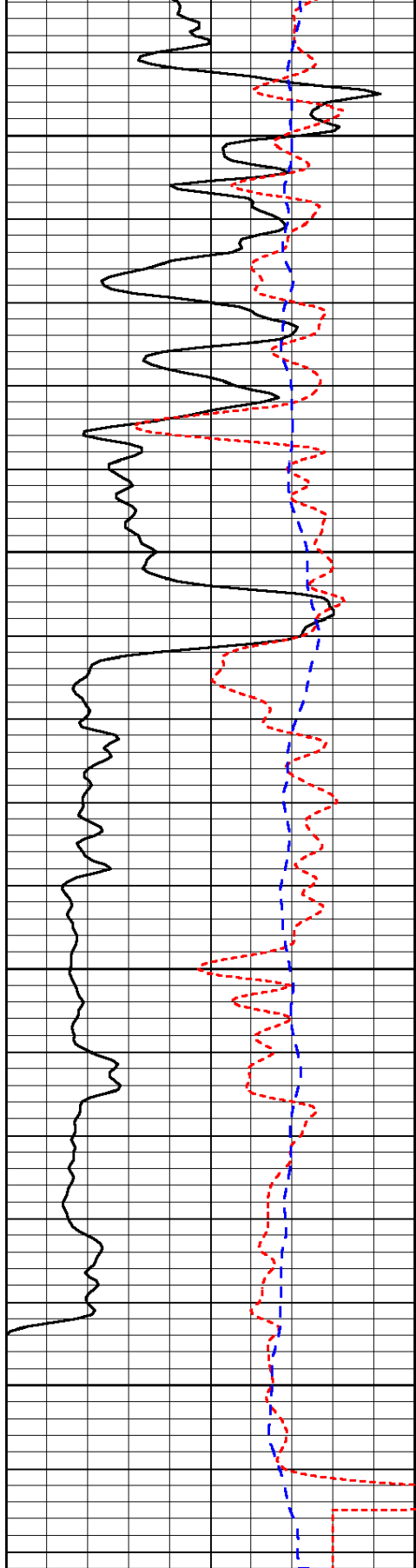


-31

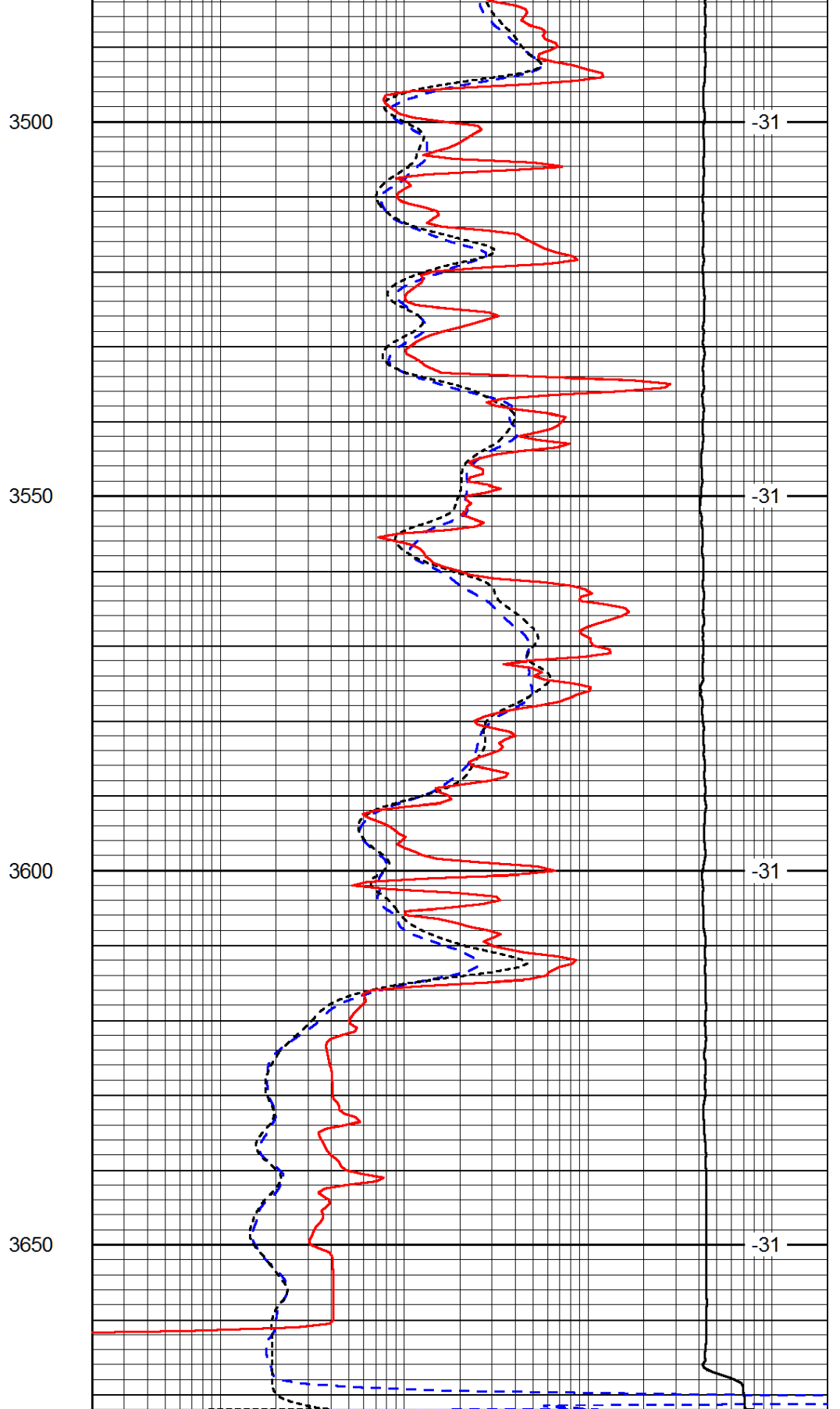
-31

-31

-31



0	Gamma Ray (GAPI)	150
-160	RXO/RT	40
-200	SP (mV)	0



0.2	Deep Resistivity (Ohm-m)	2000
0.2	Medium Resistivity (Ohm-m)	2000
0.2	Shallow Resistivity (Ohm-m)	2000
10000	Line Tension (lb)	0

LSPD  
(ft/min)