



Pioneer Energy Services

## Dual Compensated Porosity Log

15-051-26471-00-00

API No.

Company **Murfin Drilling Co. Inc.**  
 Well **Werth Trust #1-26**  
 Field **Martina**  
 County **Eljis**

State **Kansas**

Location

**SW NE SE NE  
1700' FNL / 400' FEL**

Other Services  
DIL  
MEI/BHCS

Sec: 26

Twp: 15S

Rge: 19W

Elevation

Permanent Datum **Ground Level** Elevation **1955**  
 Log Measured From **Kelly Bushing** 11 Ft. Above Perm. Datum  
 Drilling Measured From **Kelly Bushing**

K.B. 1966  
D.F. 1955  
G.L. 1955

Date

2/3/2013

Run Number

One

Type Log

CNL / CDL

Depth Driller

3670

Depth Logger

3668

Bottom Logged Interval

3647

Top Logged Interval

2850

Type Fluid In Hole

Chemical

Salinity, PPM CL

8800

Density

9.2

Level

Full

Max. Rec. Temp. F

113

Operating Rig Time

4 Hours

Equipment -- Location

17 Hays

Recorded By

R. Barnhart

Witnessed By

Robert Hendrix

**Borehole Record**

**Casing Record**

Run No.	Bit	From	To	Size	Wgt.	From	To
One	12.25	00	1150	8.625	23#	00	1150
Two	7.875	1150	TD				

<<< Fold Here >>>

All interpretations are opinions based on inferences from electrical or other measurements and we cannot and do not guarantee the accuracy or correctness of any interpretation, and we shall not, except in the case of gross or willful negligence on our part, be liable or responsible for any loss, costs, damages, or expenses incurred or sustained by anyone resulting from any interpretation made by any of our officers, agents or employees. These interpretations are also subject to our general terms and conditions set out in our current Price Schedule.

Comments

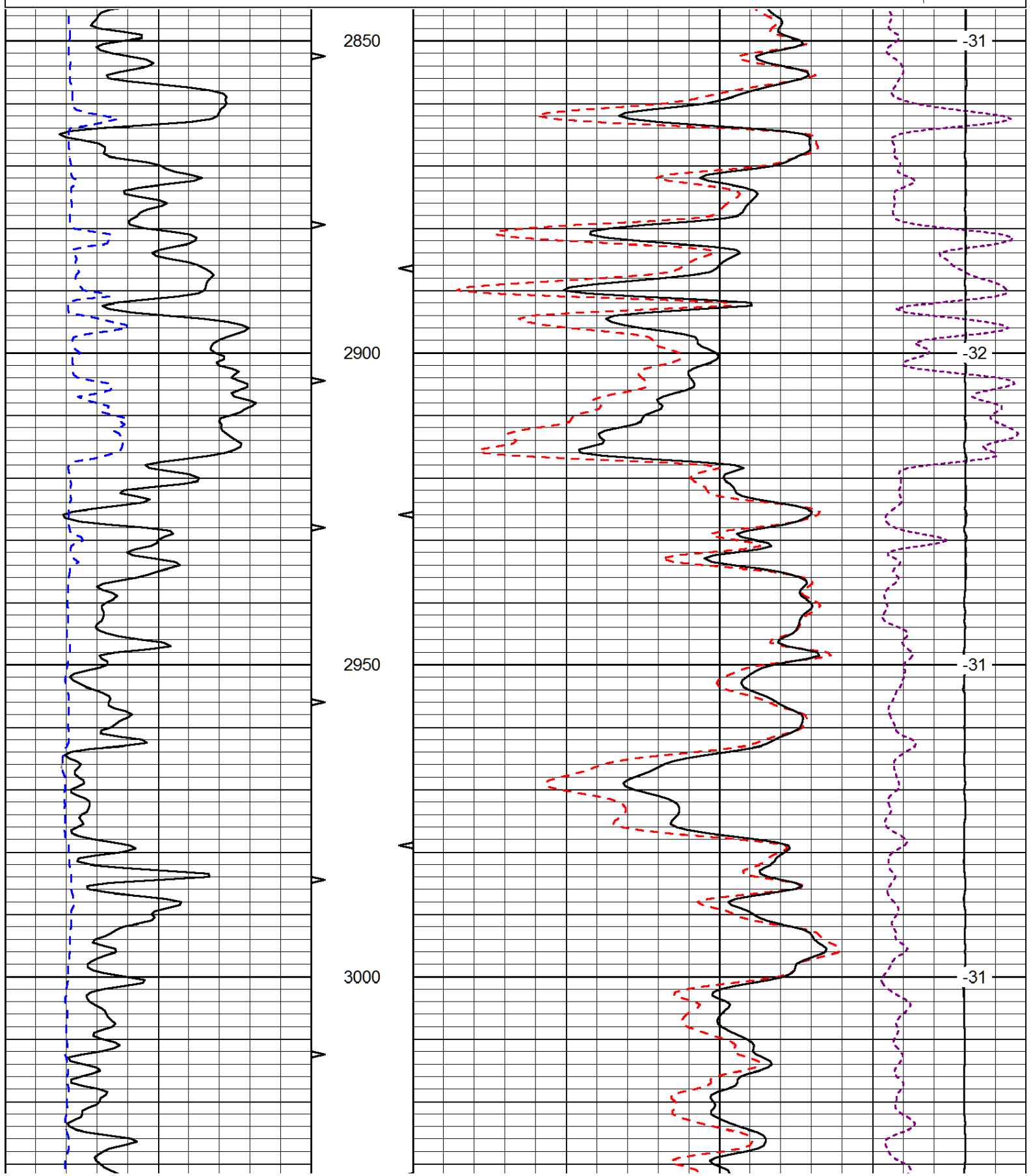
Thank you for using Log-Tech, Inc.  
(785) 625-3858

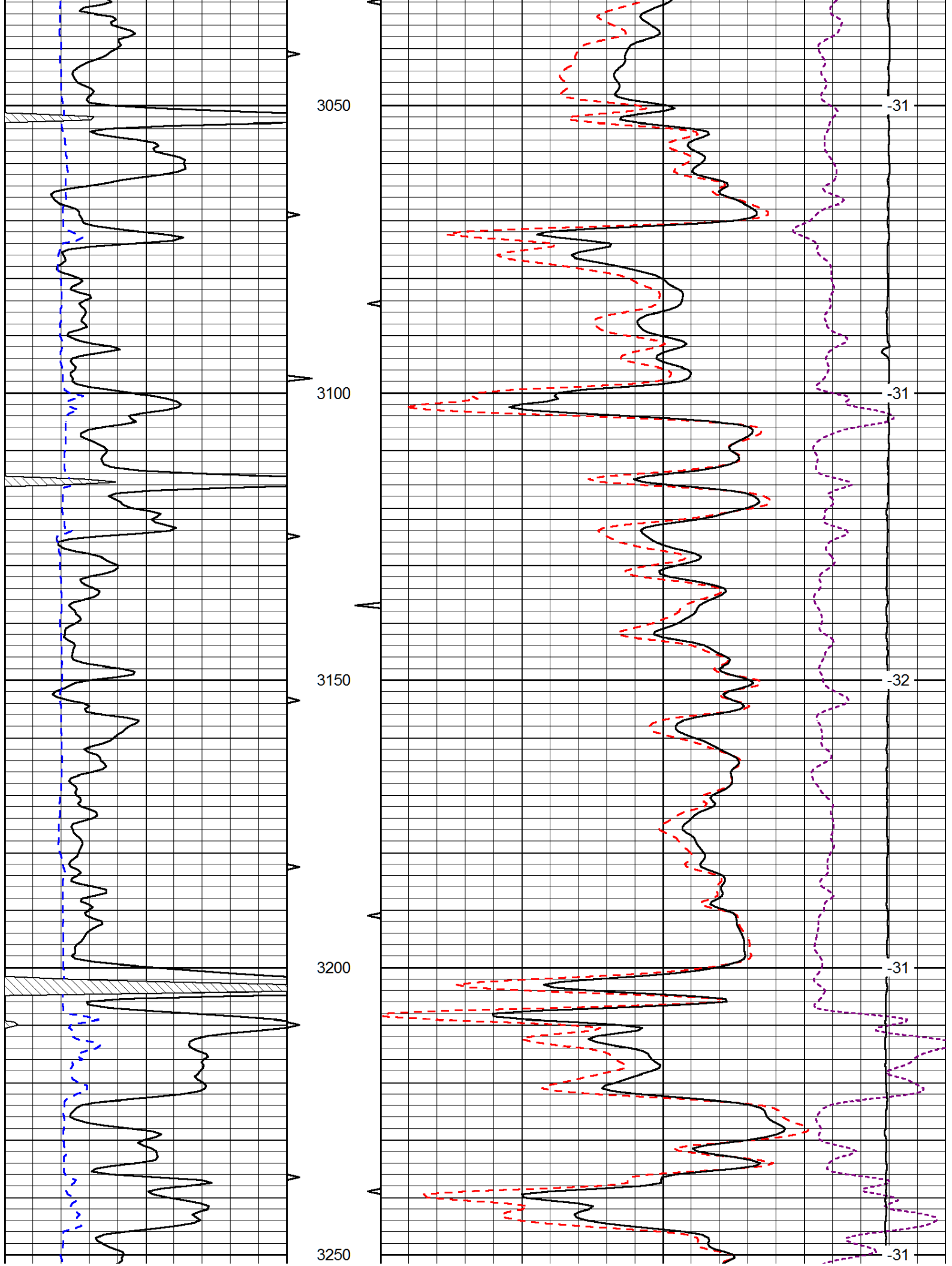
Schoenchen, KS:  
4W, 1/2N, W into

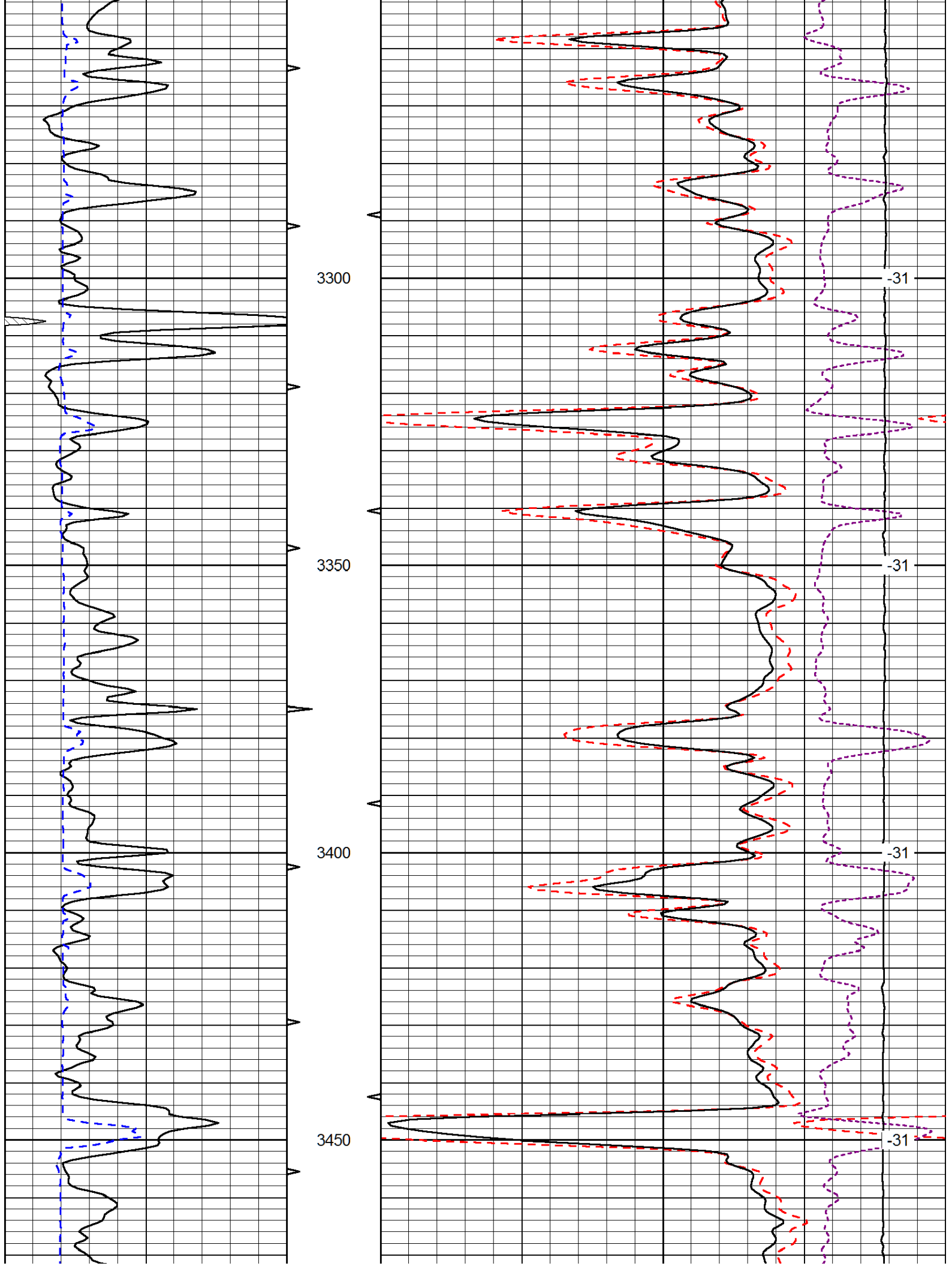
Database File: murfin\_hd.db  
 Dataset Pathname: dil/mrfmain  
 Presentation Format: cdl  
 Dataset Creation: Sun Feb 03 08:18:47 2013  
 Charted by: Depth in Feet scaled 1:240

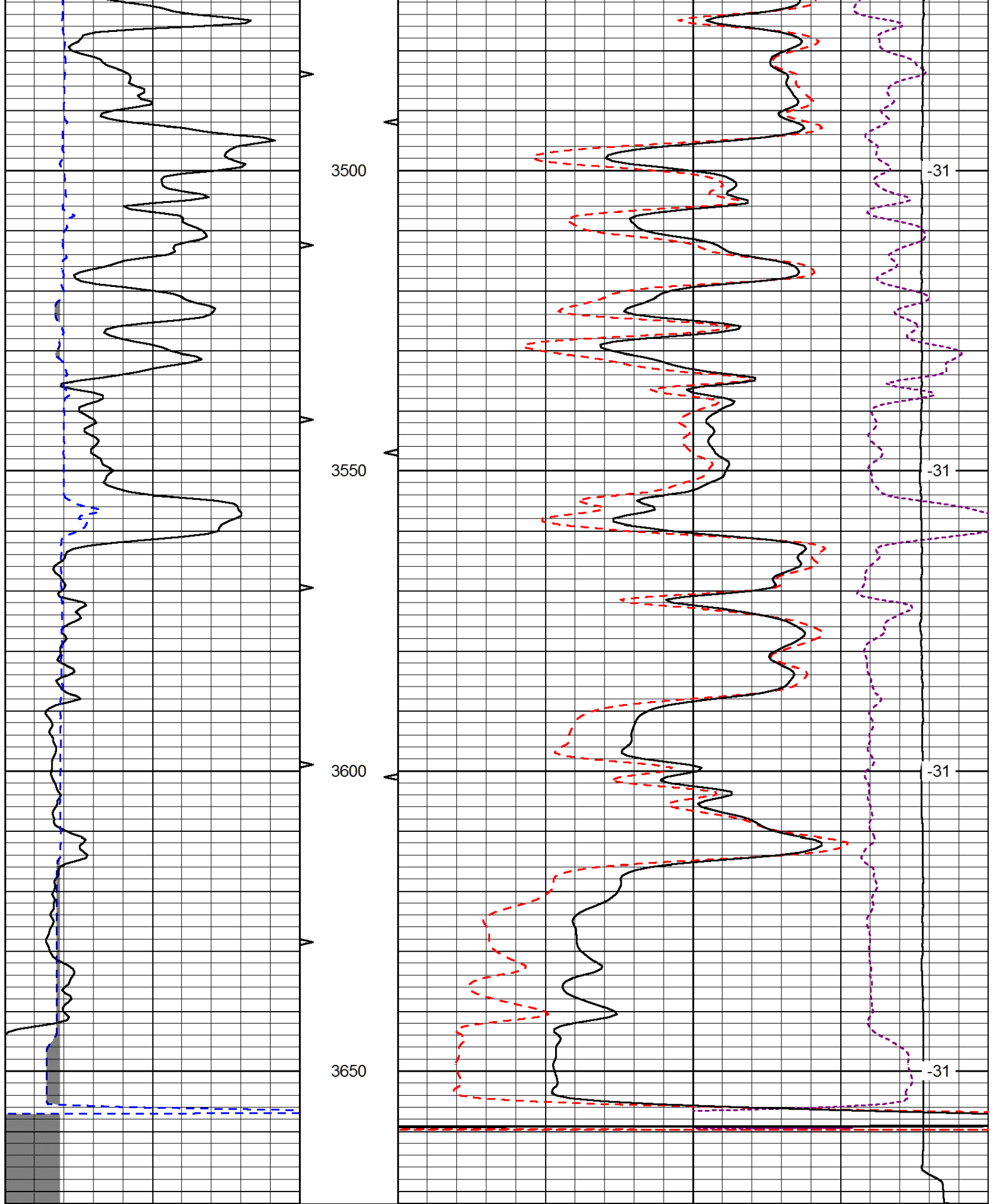
0	Gamma Ray (GAPI)	150
6	Caliper (in)	16

30	Compensated Density (pu)	-10
2	Bulk Density (g/cc)	3
15000	Line Tension (lb)	0
-0.25	Correction (g/cc)	0.25
		LSPD (ft/min)









0	Gamma Ray (GAPI)	150
6	Caliper (in)	16

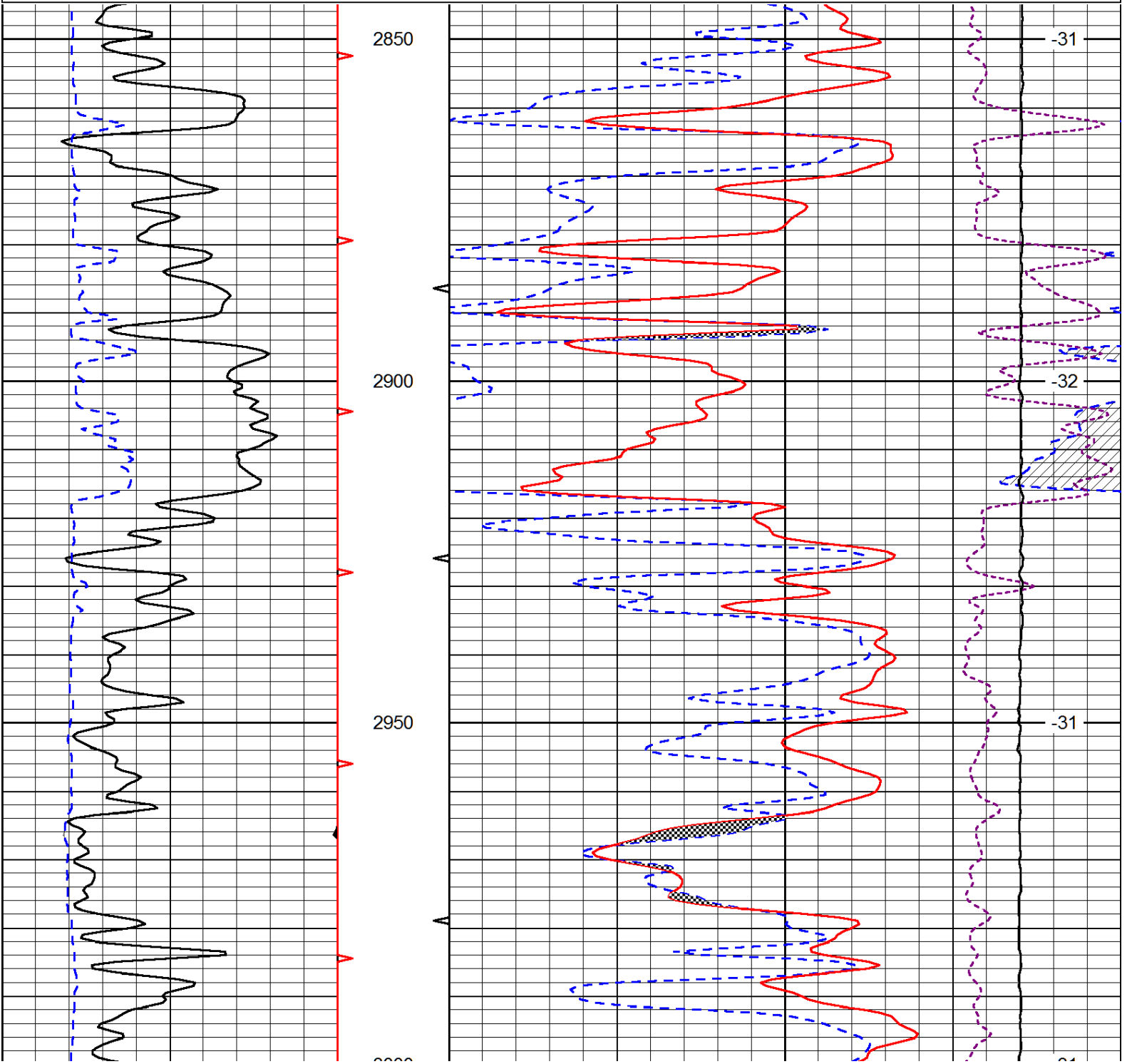
30	Compensated Density (pu)	-10
2	Bulk Density (g/cc)	3
15000	Line Tension (lb)	0

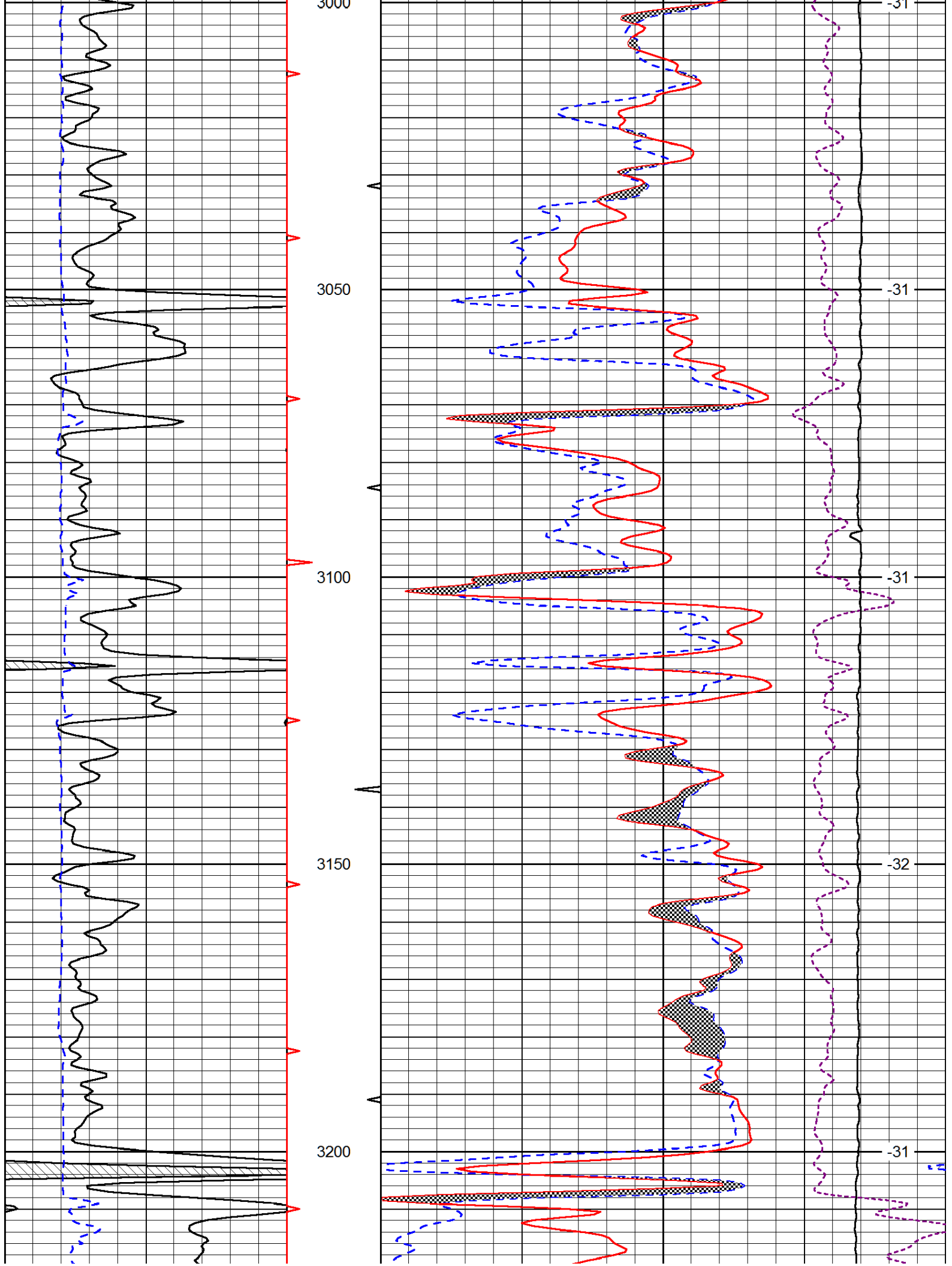
-0.25	Correction (g/cc)	0.25
-------	-------------------	------

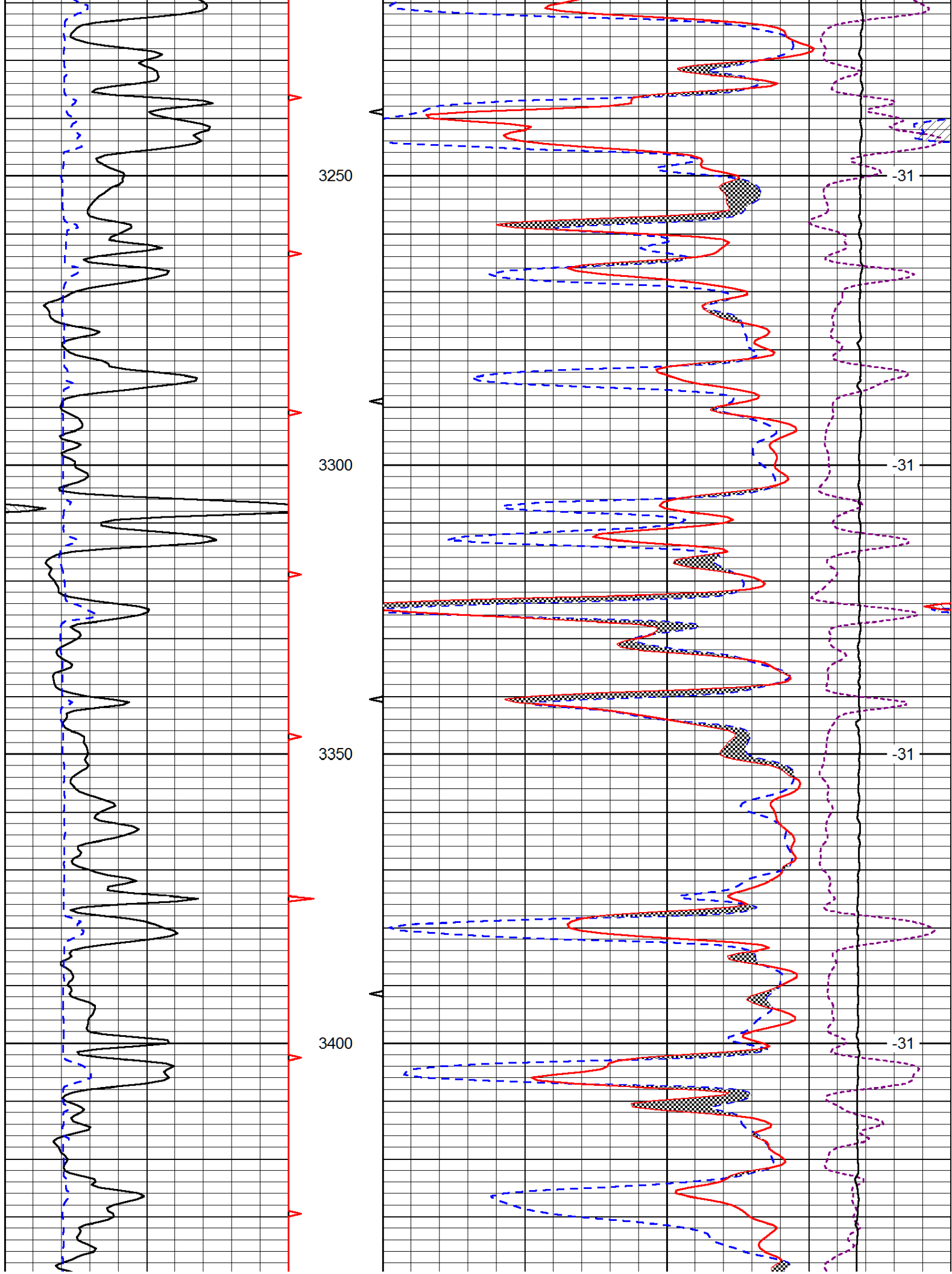
Database File: murfin\_hd.db  
 Dataset Pathname: dil/mrfmain  
 Presentation Format: cndlspec  
 Dataset Creation: Sun Feb 03 08:18:47 2013  
 Charted by: Depth in Feet scaled 1:240

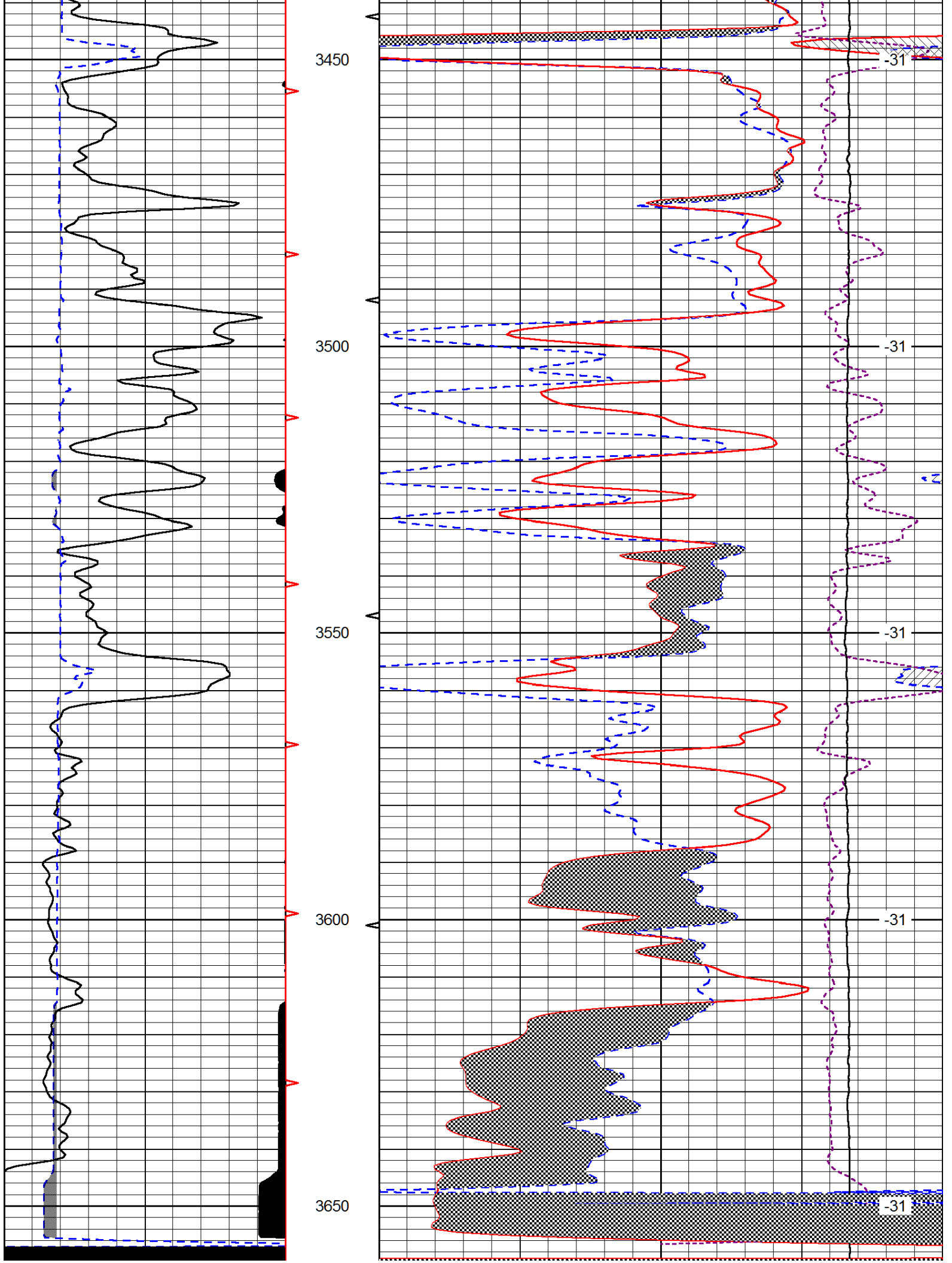
0	Gamma Ray (GAPI)	150
6	Caliper (in)	16

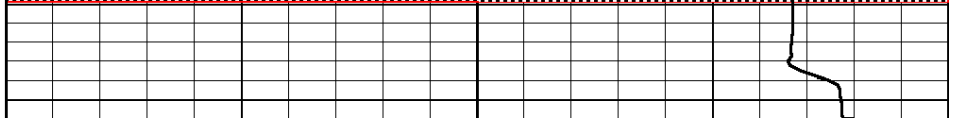
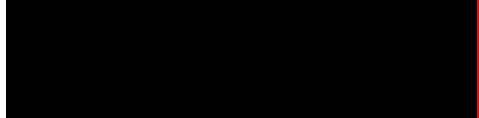
30	CNLS (pu)	-10
30	Compensated Density (2.71 ma) (pu)	-10
10000	Line Tension (lb)	0
-0.25	Correction (g/cc)	0.25











0	Gamma Ray (GAPI)	150
6	Caliper (in)	16

30	CNLS (pu)	-10
30	Compensated Density (2.71 ma) (pu)	-10
10000	Line Tension (lb)	0
	-0.25 Correction (g/cc)	0.25
		LSPD (ft/min)