



# MIDWEST SURVEYS

LOGGING - PERFORATING - CONSULTING SERVICES  
P.O. Box 68, Osawatomie, KS 66064  
913 / 755 - 2128

## GAMMA RAY / NEUTRON / CCL

File No.

API # 15-121-29,416

Company Haas Petroleum, LLC.  
Well North Cone No. 10-HP  
Field Paola / Rantoul  
County Miami State Kansas

Location 540' FSL & 735' FEL  
NE-SW-SE-SE  
Other Services Perforate  
Elevation  
Sec. 11 Twp. 16S Rge. 21e  
Permanent Datum GL Elevation 998'  
Log Measured From GL  
Drilling Measured From GL  
K.B. NA  
D.F. NA  
G.L. 998'

Date	01-31-2013		
Run Number	One		
Depth Driller	700.0		
Depth Logger	689.0		
Bottom Logged Interval	688.0		
Top Log Interval	20.0		
Fluid Level	Full		
Type Fluid	Water		
Density / Viscosity	NA		
Salinity - PPM Cl	NA		
Max Recorded Temp	NA		
Estimated Cement Top	0.0		
Equipment No.	Location	104	Osawatomie
Recorded By	Gary Windisch		
Witnessed By	John Haas		

RUN		BORE-HOLE RECORD				CASING RECORD	
No.	BIT	FROM	TO	SIZE	WGT.	FROM	TO
One	9.875"	00	20.0	7.00"	17.0#	0.0	20.0
Two	6.25"	20.0	700.0	2.875"	6.5#	0.0	691.0

<<< Fold Here >>>

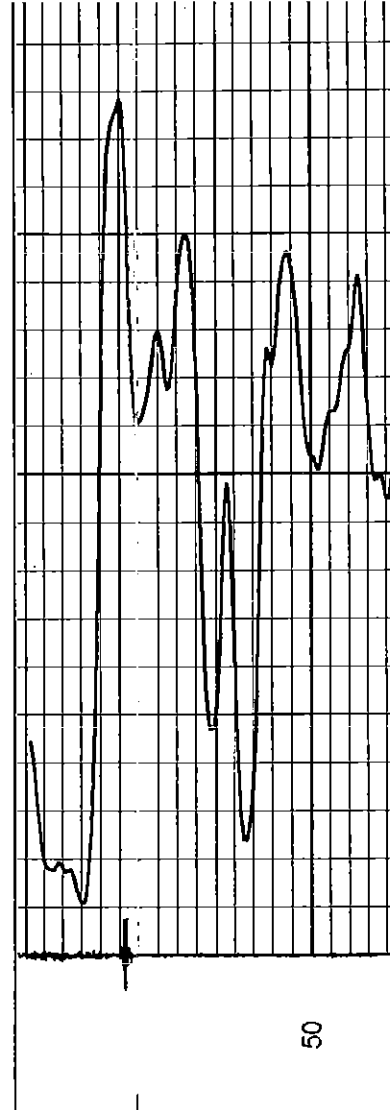
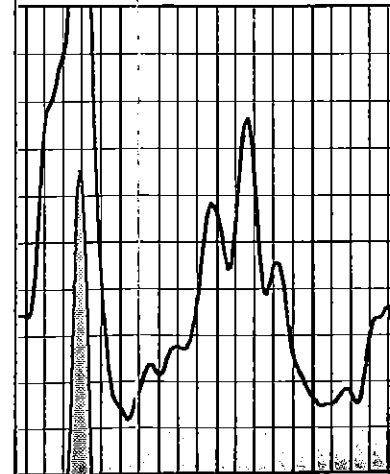
All interpretations are opinions based on inferences from electrical or other measurements and we cannot and do not guarantee the accuracy or correctness of any interpretation, and we shall not, except in the case of gross or willful negligence on our part, be liable or responsible for any loss, costs, damages, or expenses incurred or sustained by anyone resulting from any interpretation made by any of our officers, agents or employees. These interpretations are also subject to our general terms and conditions set out in our current Price Schedule.

Comments

Drilling Contractor :  
Skyy Drilling

Database File: cone10hpn.db  
Dataset Pathname: pass1  
Presentation Format: gr-n-ccl  
Dataset Creation: Thu Jan 31 13:03:47 2013 by Log SCH 111116  
Charted by: Depth in Feet scaled 1:240

0 150 1800  
Gamma Ray (cps) Neutron (cps)



50

