



Pioneer Energy Services

Dual Compensated Porosity Log

Company TDI, Inc.
Well GR #1
Field Wildcat
County Ellis
State Kansas
Location NE SW SW NW
 2060' FNL / 570' FWL
Other Services DILMEL

API No. 15-051-26429-00-00
Sec: 14 **Twp:** 15S **Rge:** 19W

Permanent Datum Ground Level
Log Measured From Kelly Bushing
Drilling Measured From Kelly Bushing
Elevation 2011 10 Ft. Above Perm. Datum
K.B. 2021
D.F. G.L. 2011

Date	12/6/2012
Run Number	One
Type Log	CNL / CDL
Depth Driller	3750
Depth Logger	3747
Bottom Logged Interval	3726
Top Logged Interval	2900
Type Fluid In Hole	Chemical
Salinity, PPM CL	3800
Density	9.1
Level	Full
Max. Rec. Temp. F	114
Operating Rig Time	4 Hours
Equipment -- Location	15 Hays
Recorded By	R. Barnhart
Witnessed By	Herb Deines

Borehole Record		Casing Record					
Run No.	Bit	From	To	Size	Wgt.	From	To
One	12.25	00	1221	8.625	23#	00	1221
Two	7.875	1221	TD				

<<< Fold Here >>>

All interpretations are opinions based on inferences from electrical or other measurements and we cannot and do not guarantee the accuracy or correctness of any interpretation, and we shall not, except in the case of gross or willful negligence on our part, be liable or responsible for any loss, costs, damages, or expenses incurred or sustained by anyone resulting from any interpretation made by any of our officers, agents or employees. These interpretations are also subject to our general terms and conditions set out in our current Price Schedule.

Comments

Thank you for using Log-Tech, Inc.
 (785) 625-3858

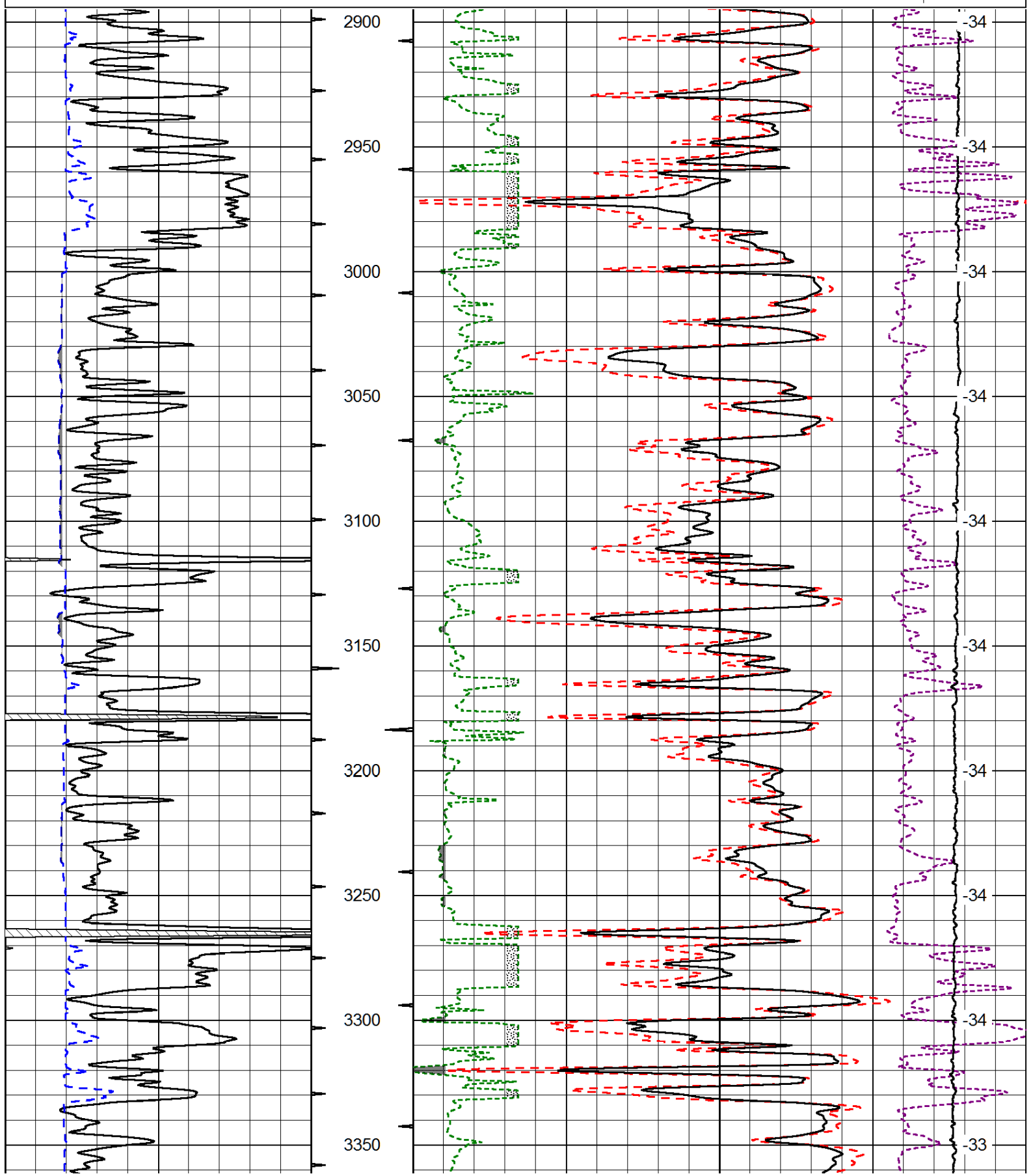
 Antonino, KS:
 1W, 2.1S, E into

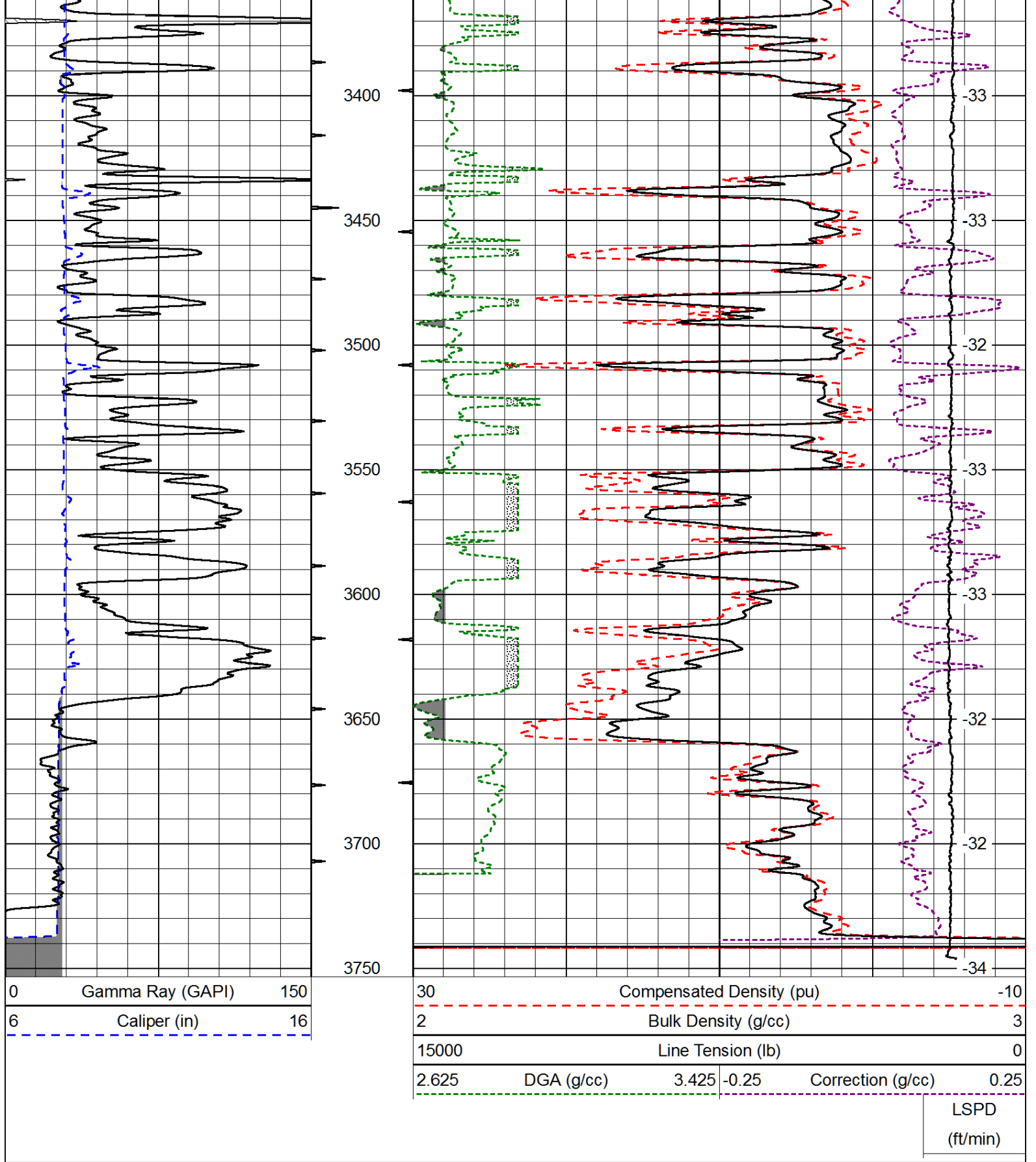
Database File: tdi_hd.db
 Dataset Pathname: dil/tdimain
 Presentation Format: cdl
 Dataset Creation: Thu Dec 06 22:15:51 2012
 Charted by: Depth in Feet scaled 1:600

0	Gamma Ray (GAPI)	150
6	Caliper (in)	16

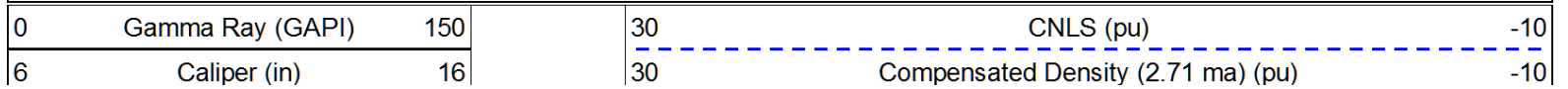
30	Compensated Density (pu)		-10
2	Bulk Density (g/cc)		3
15000	Line Tension (lb)		0
2.625	DGA (g/cc)	3.425	-0.25
			Correction (g/cc)
			0.25

LSPD
(ft/min)



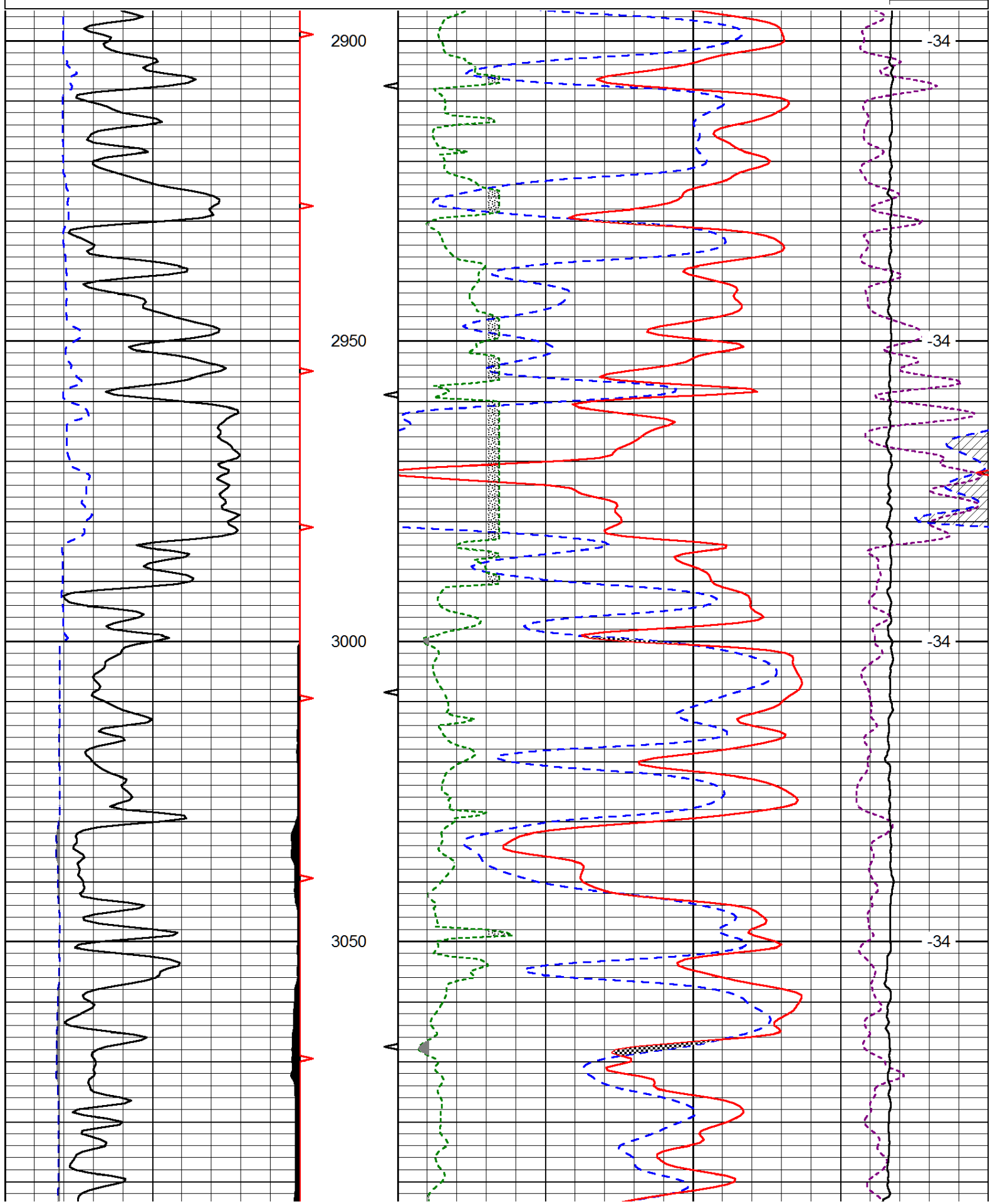


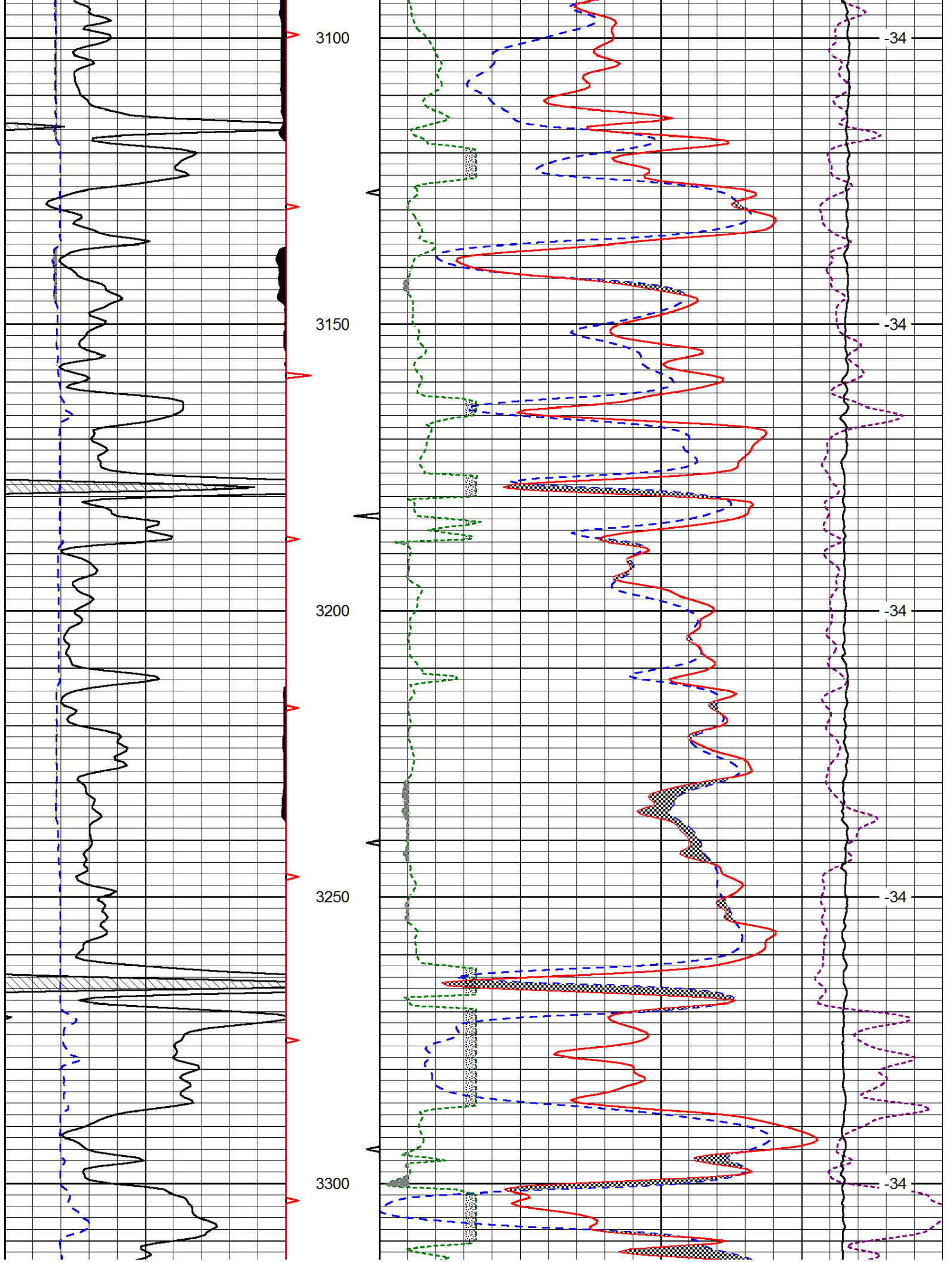
Database File: tdi_hd.db
 Dataset Pathname: dil/tdimain
 Presentation Format: cndlspec
 Dataset Creation: Thu Dec 06 22:15:51 2012
 Charted by: Depth in Feet scaled 1:240

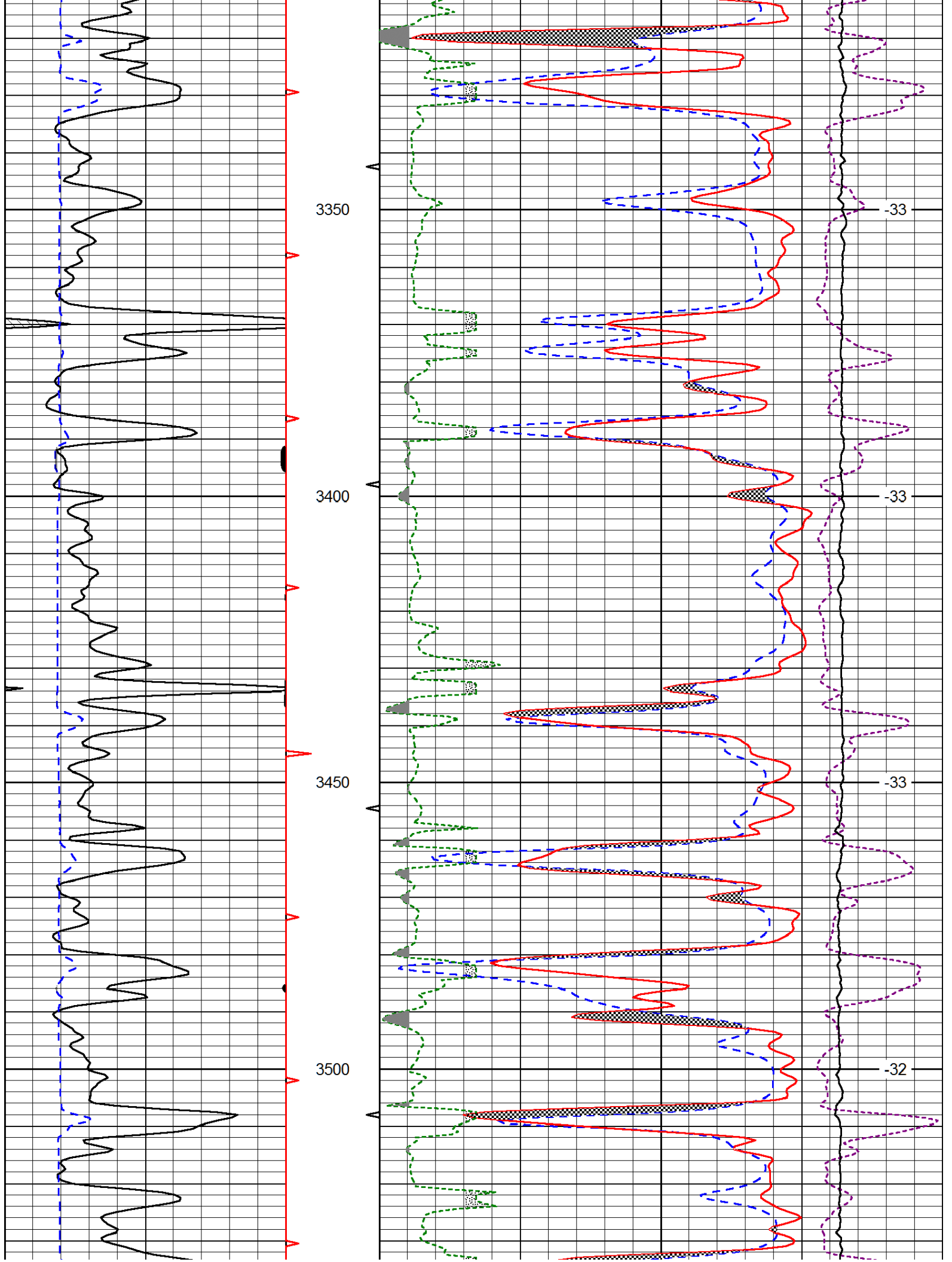


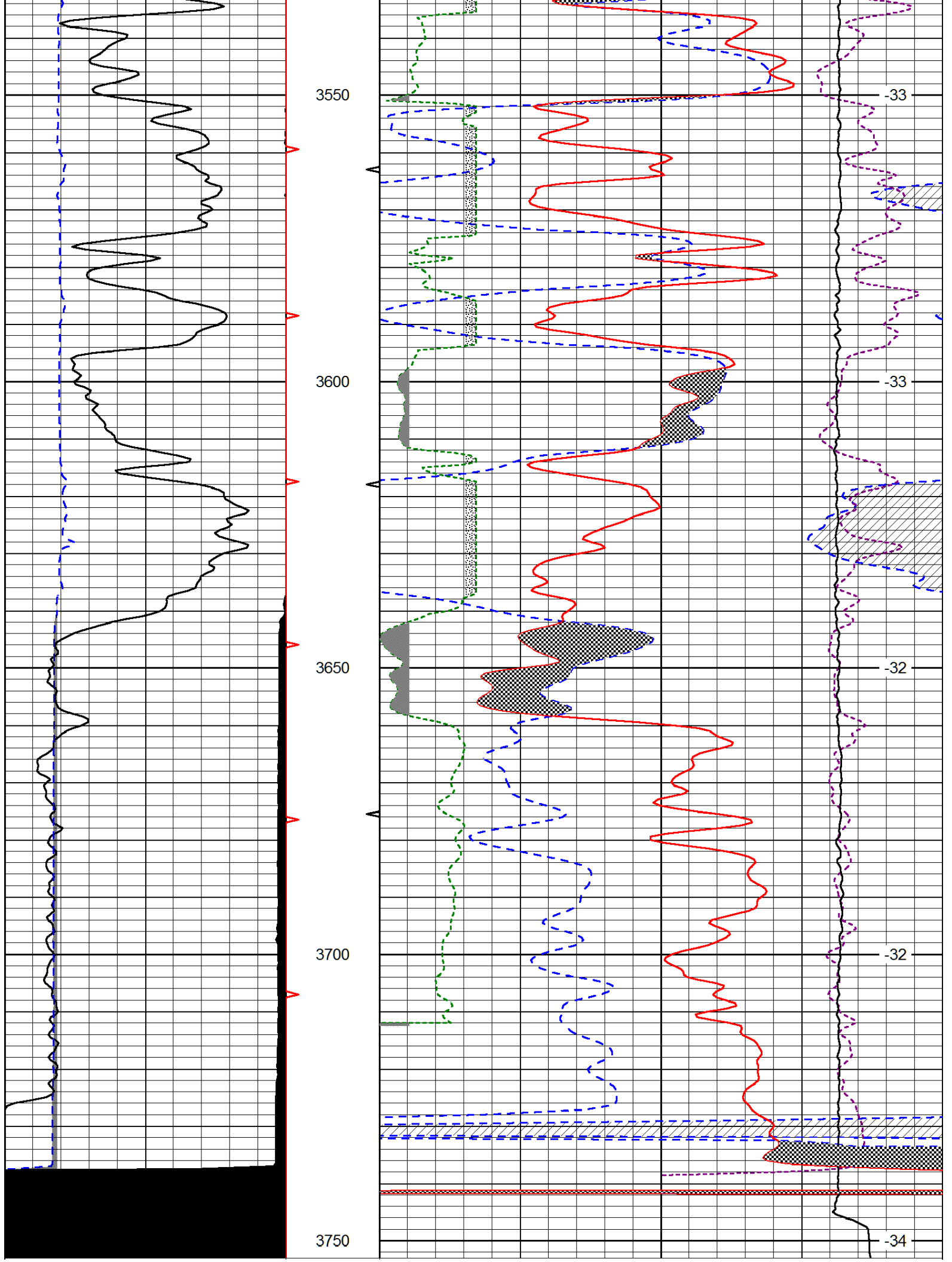
2.625	DGA (g/cc)	3.425	-0.25	Correction (g/cc)	0.25
10000		Line Tension (lb)			0

LSPD
(ft/min)









0	Gamma Ray (GAPI)	150
6	Caliper (in)	16

30	CNLS (pu)			-10	
30	Compensated Density (2.71 ma) (pu)			-10	
2.625	DGA (g/cc)	3.425	-0.25	Correction (g/cc)	0.25
10000	Line Tension (lb)			0	

LSPD
(ft/min)