



Pioneer Energy Services

Dual Induction Log

API No.	15-051-26429-00-00		
Company	TDL, Inc.		
Well	GR #1		
Field	Wildcat		
County	Eljis	State	Kansas
Location	NE SW SW NW 2060' FNL / 570' FWL		
Sec: 14	Twp: 15S	Rge: 19W	Other Services CNL / CDL MEL

Permanent Datum	Ground Level	Elevation 2011	K.B. 2021
Log Measured From	Kelly Bushing	10 Ft. Above Perm. Datum	D.F. 2011
Drilling Measured From	Kelly Bushing		G.L. 2011
Date	12/6/2012		
Run Number	One		
Depth Driller	3750		
Depth Logger	3747		
Bottom Logged Interval	3746		
Top Log Interval	1200		
Casing Driller	8.625 @ 1221		
Casing Logger	1220		
Bit Size	7.875		
Type Fluid in Hole	Chemical		
Salinity, ppm CL	3800		
Density / Viscosity	9.1	60	
pH / Fluid Loss	10.0	6.8	
Source of Sample	Flowline		
Rm @ Meas. Temp	0.40	@ 60	
Rmf @ Meas. Temp	0.30	@ 60	
Rmc @ Meas. Temp	0.54	@ 60	
Source of Rmf / Rmc	Charts		
Rm @ BHT	0.21	@ 114	
Operating Rig Time	4 Hours		
Max Rec. Temp. F	114		
Equipment Number	15		
Location	Hays		
Recorded By	R. Barnhart		
Witnessed By	Herb Deines		

<<< Fold Here >>>

All interpretations are opinions based on inferences from electrical or other measurements and we cannot and do not guarantee the accuracy or correctness of any interpretation, and we shall not, except in the case of gross or willful negligence on our part, be liable or responsible for any loss, costs, damages, or expenses incurred or sustained by anyone resulting from any interpretation made by any of our officers, agents or employees. These interpretations are also subject to our general terms and conditions set out in our current Price Schedule.

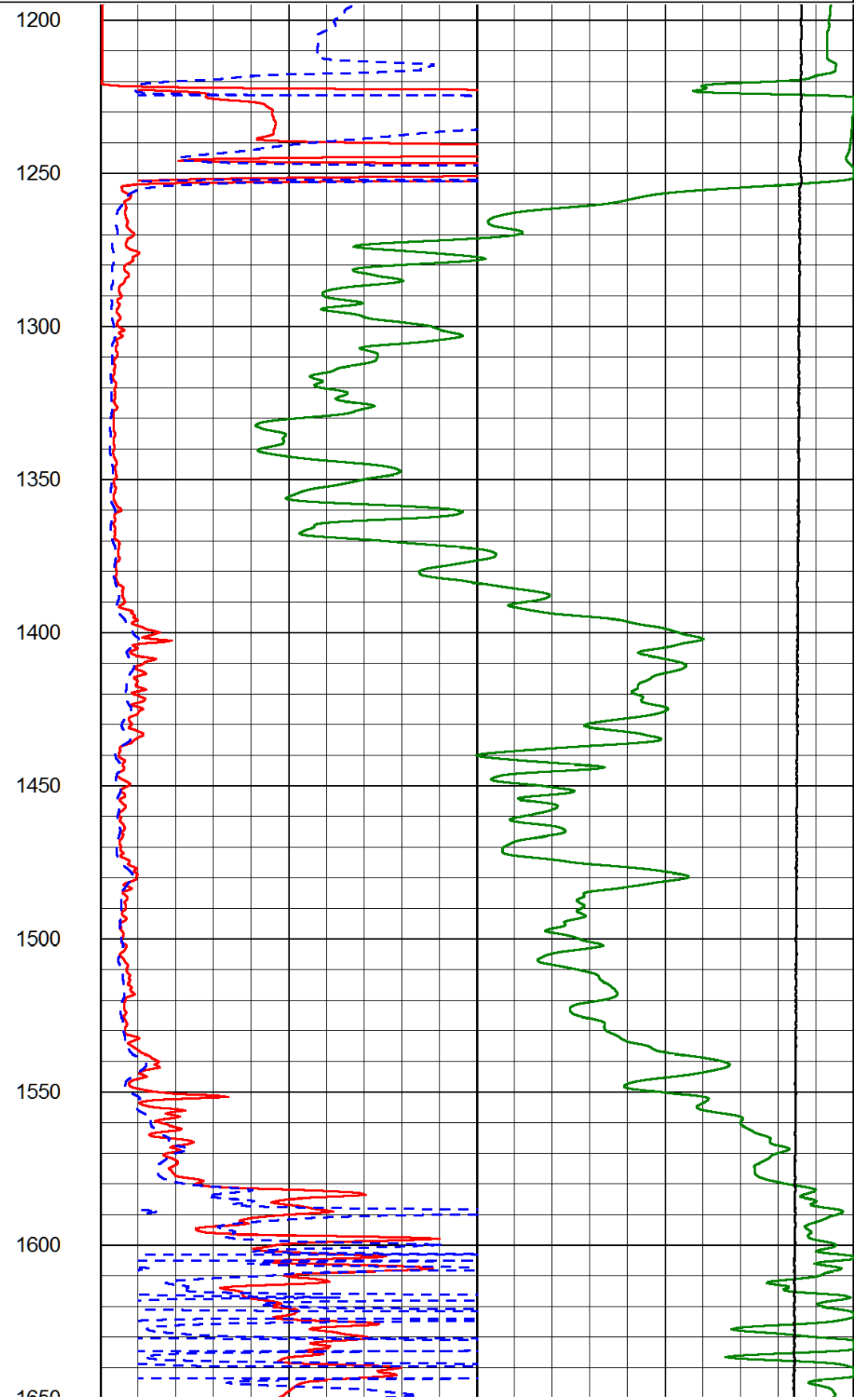
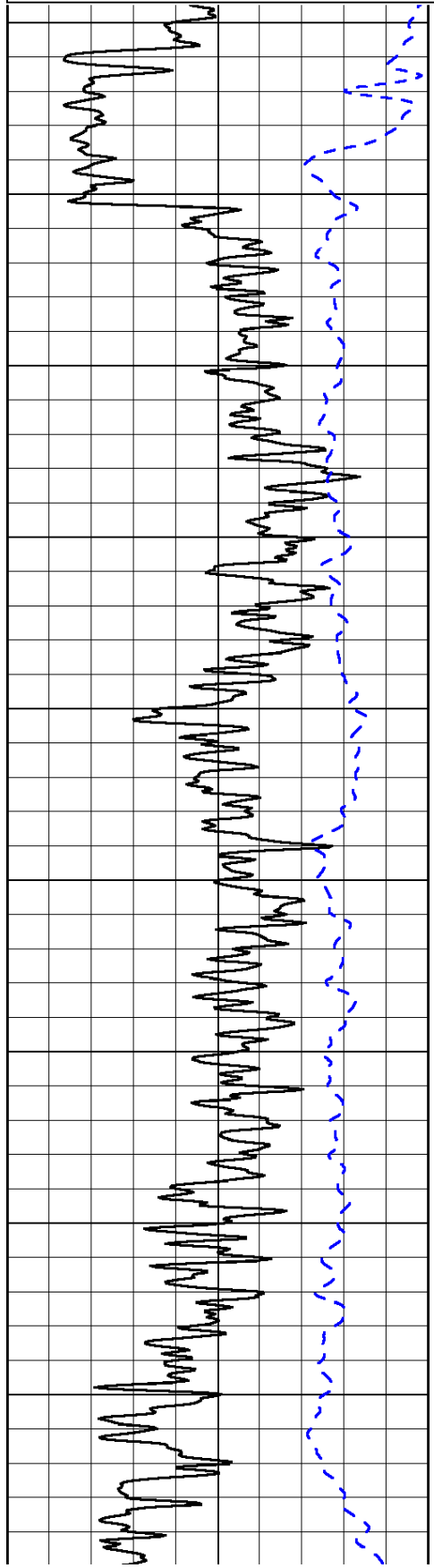
Comments

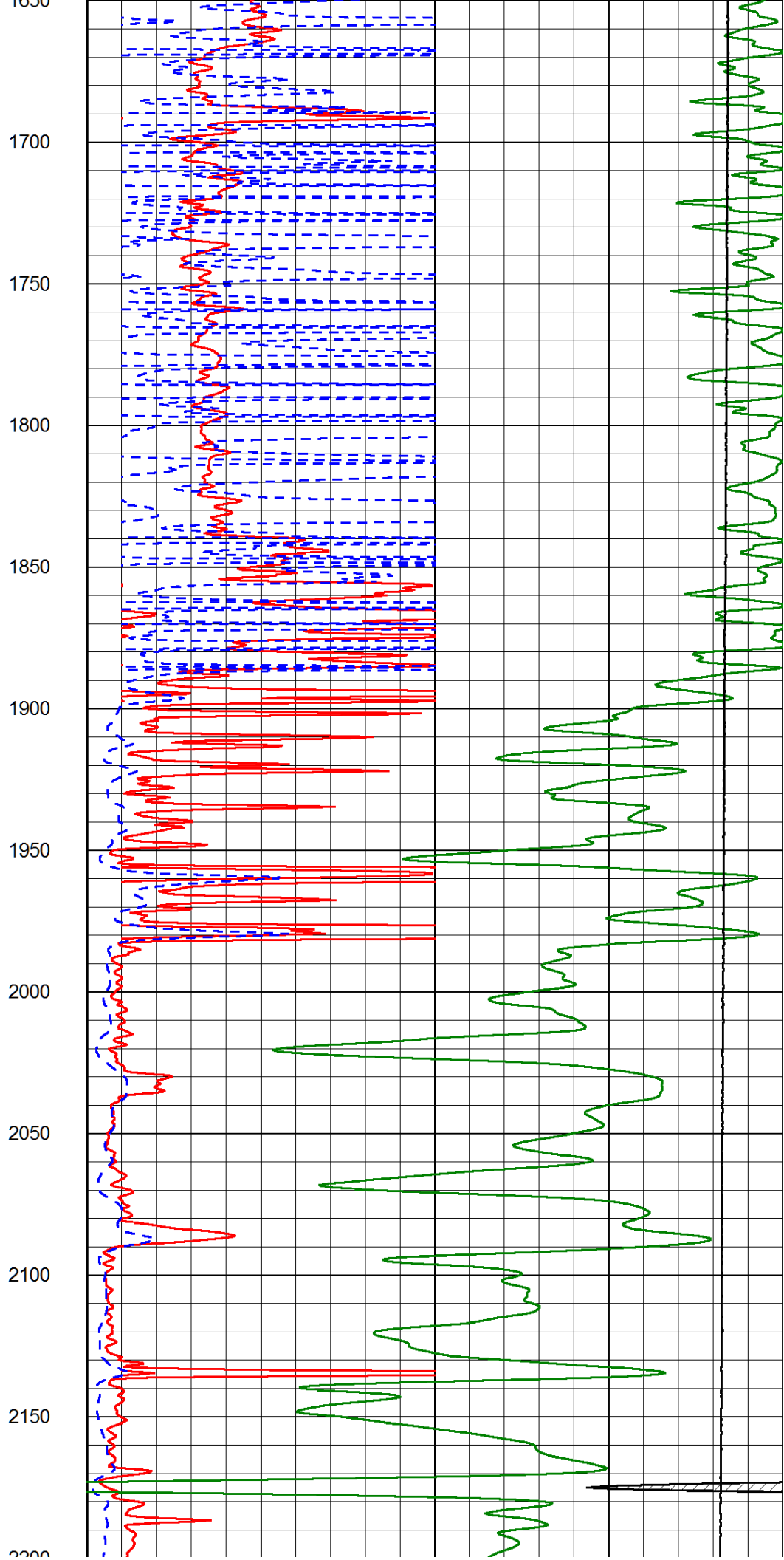
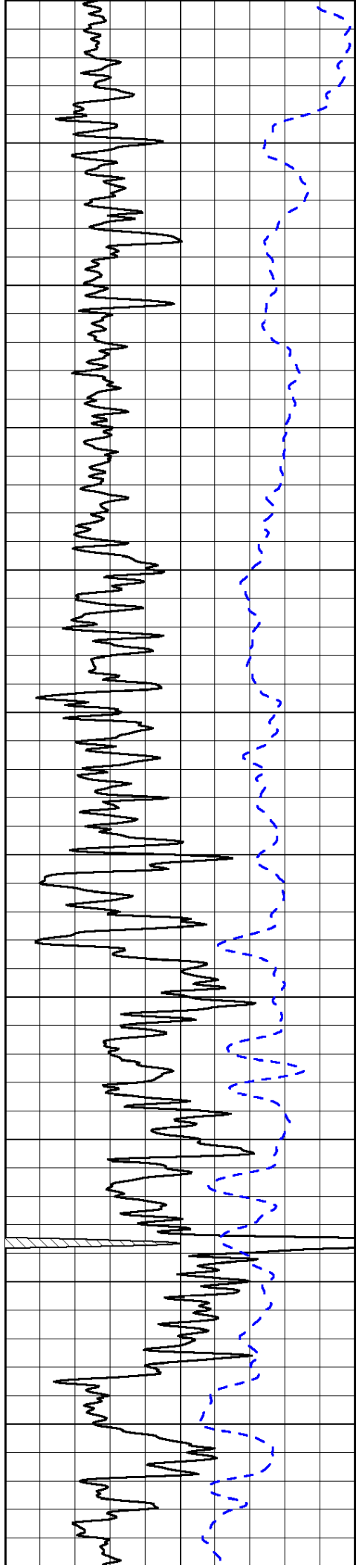
Thank you for using Log-Tech, Inc.
 (785) 625-3858

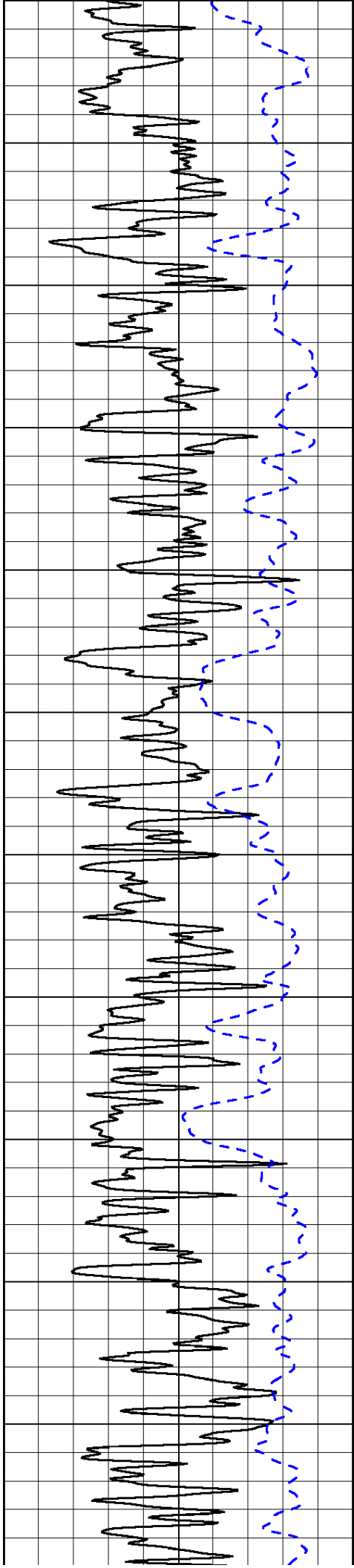
 Antonino, KS:
 1W, 2.1S, E into

0	Gamma Ray (GAPI)	150
-200	SP (mV)	0

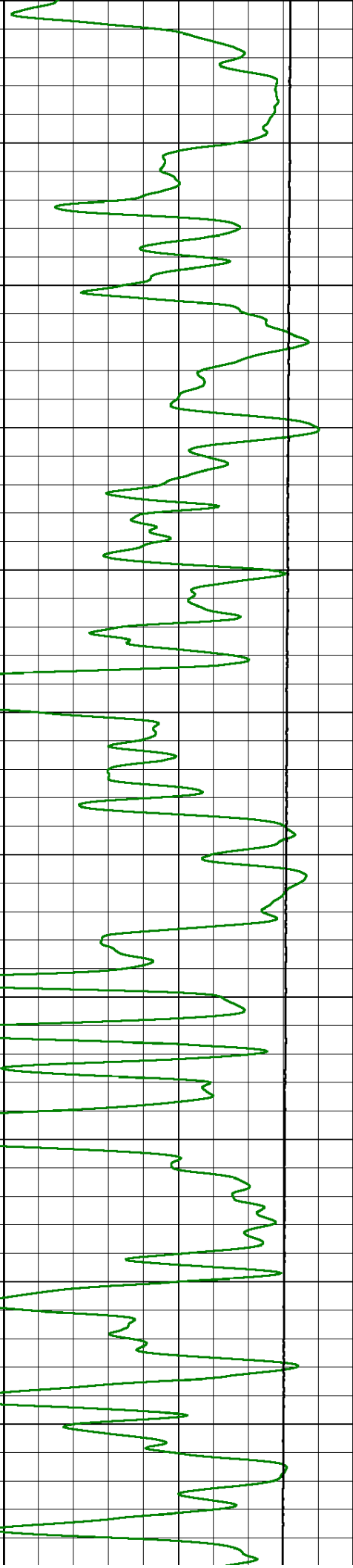
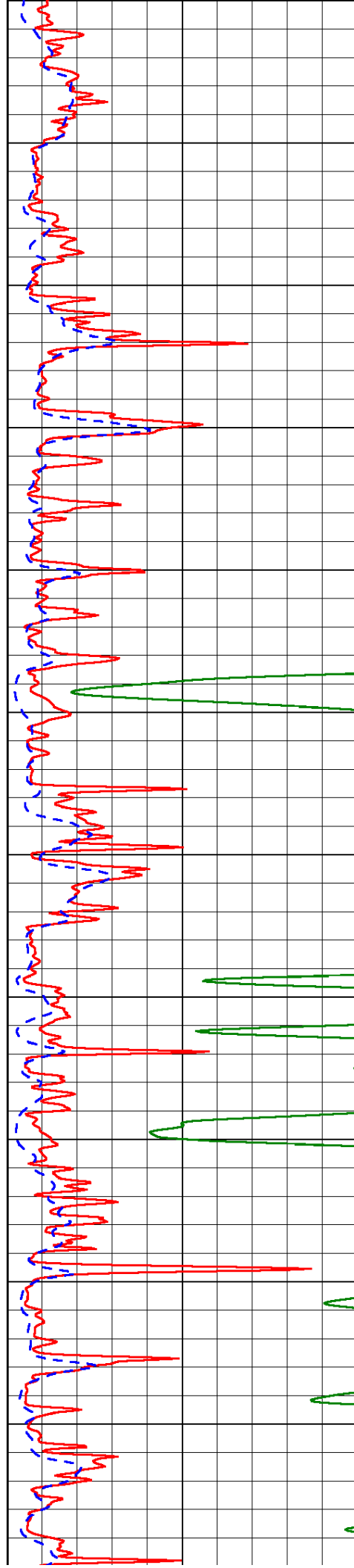
0	Shallow Resistivity (Ohm-m)	50
0	Deep Resistivity (Ohm-m)	50
1000	Conductivity (Ohm-m)	0
15000	Line Tension (lb)	0
	Shallow Resistivity (Ohm-m)	50
	Deep Resistivity (Ohm-m)	50

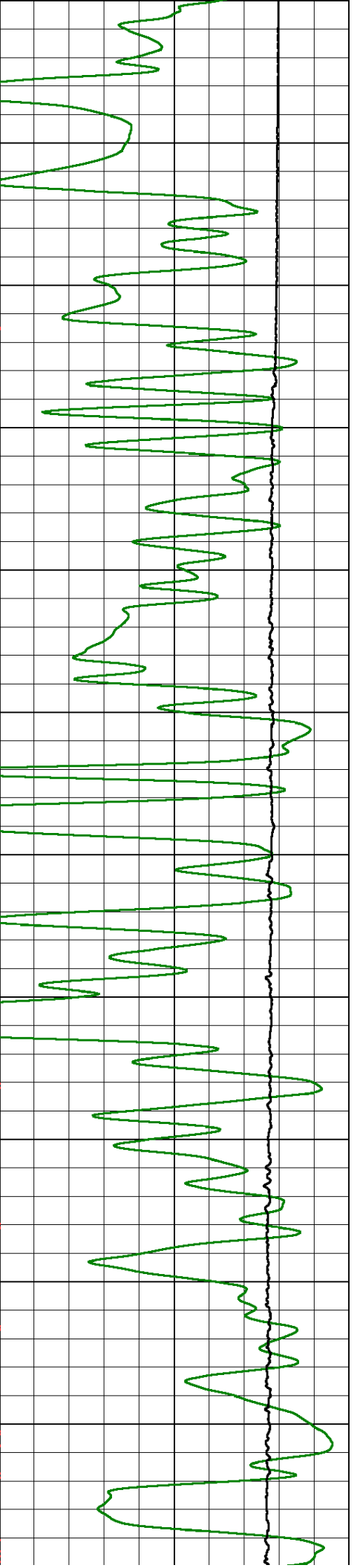
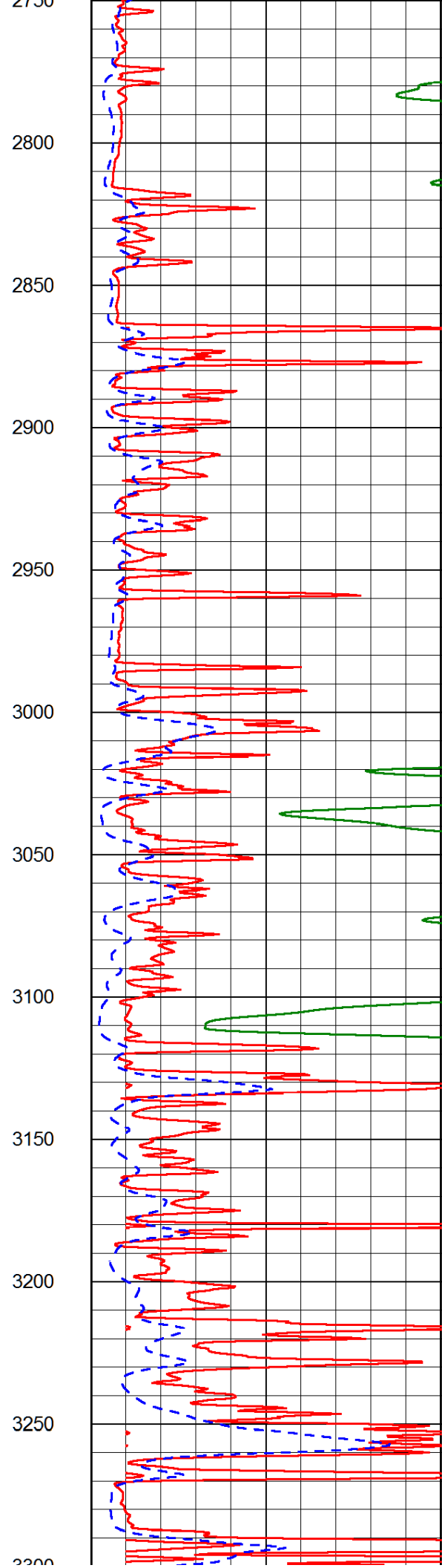
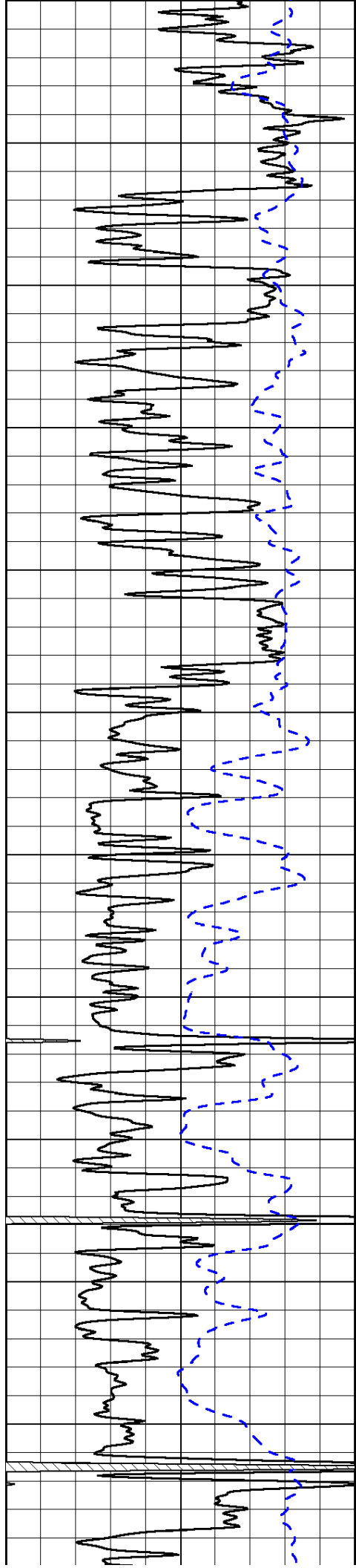


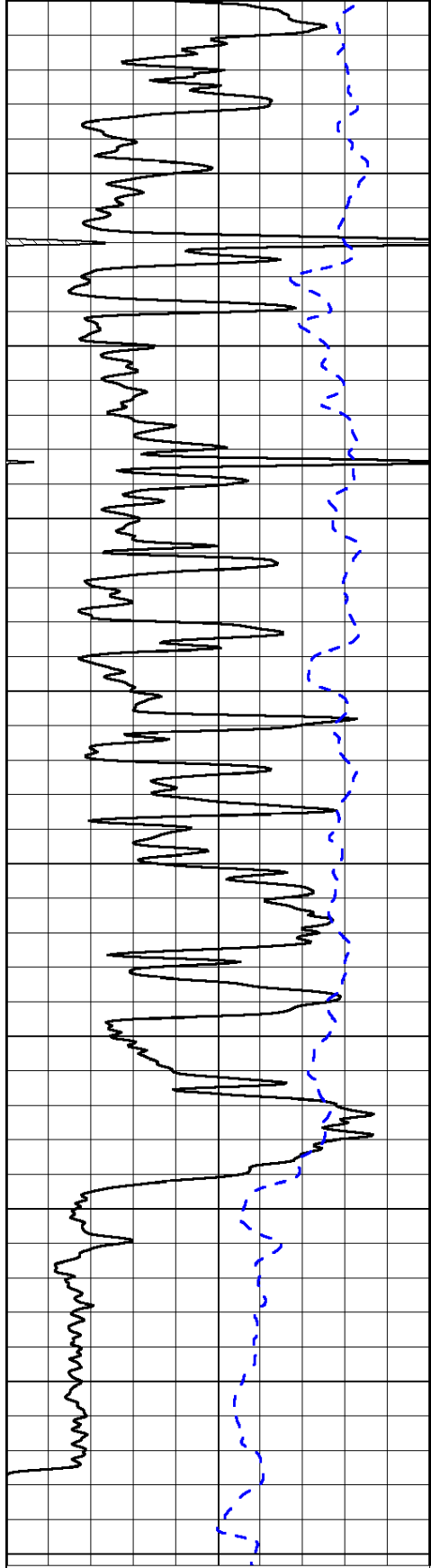




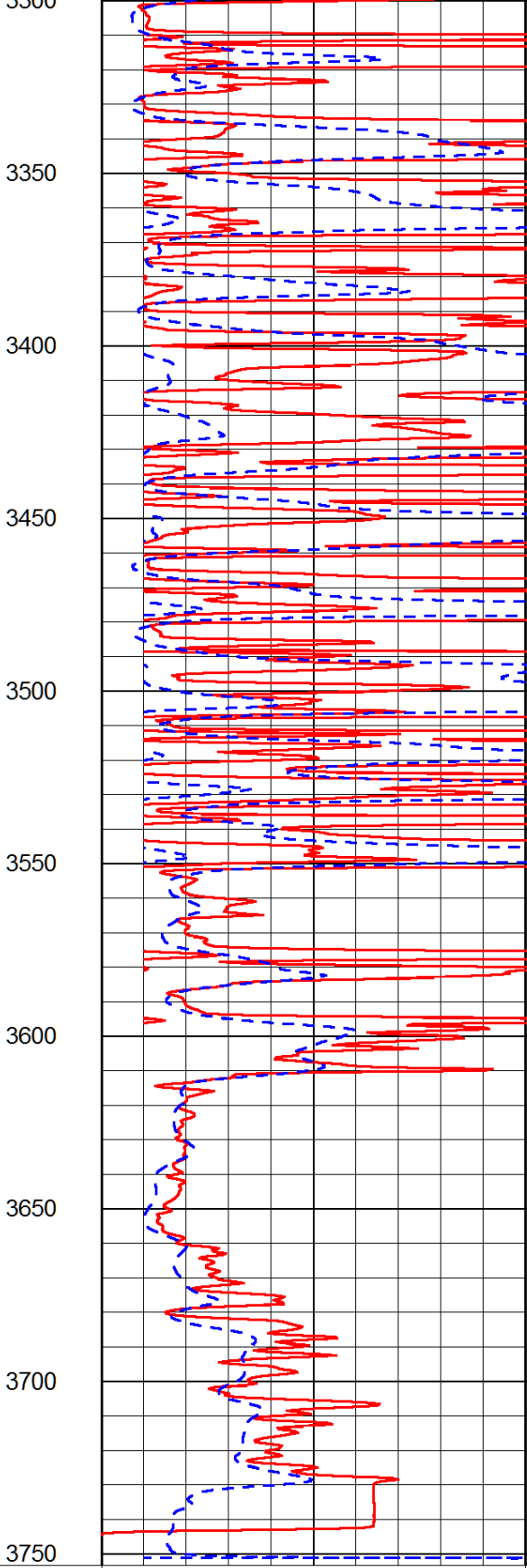
2200
2250
2300
2350
2400
2450
2500
2550
2600
2650
2700
2750



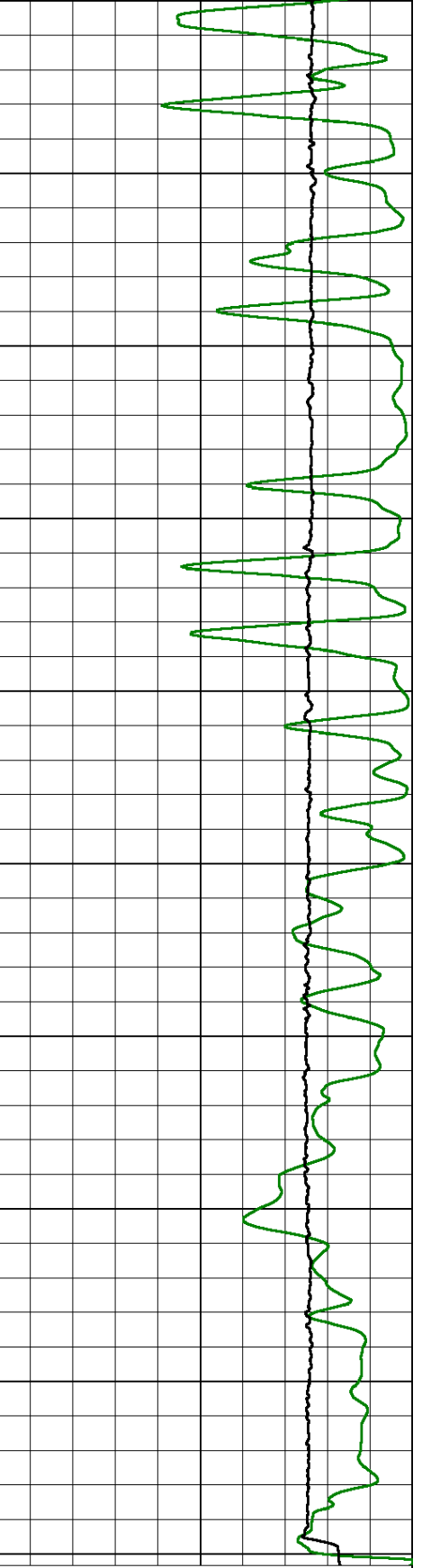




0 Gamma Ray (GAPI) 150
 -200 SP (mV) 0



0 Shallow Resistivity (Ohm-m) 50
 0 Deep Resistivity (Ohm-m) 50



1000 Conductivity (Ohm-m) 0
 15000 Line Tension (lb) 0

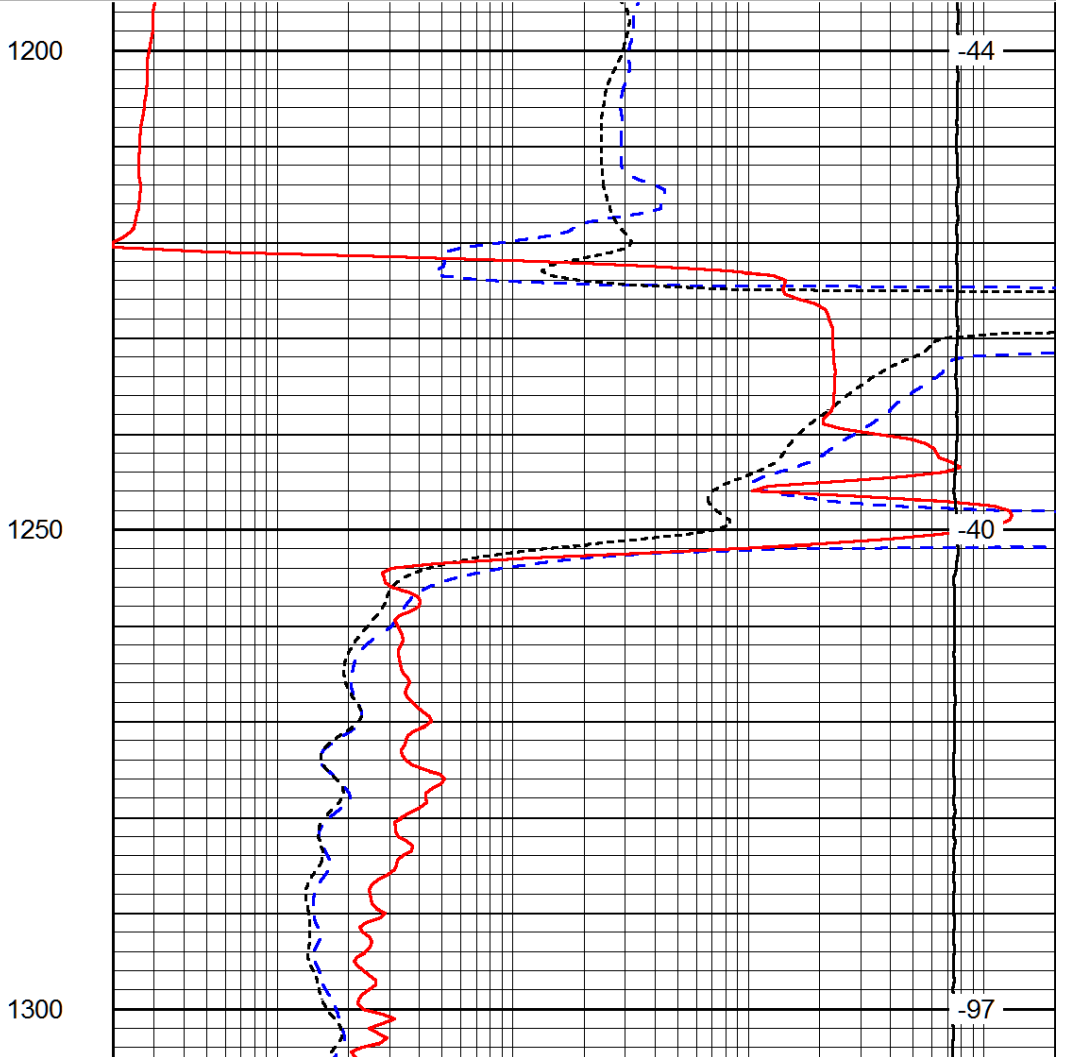
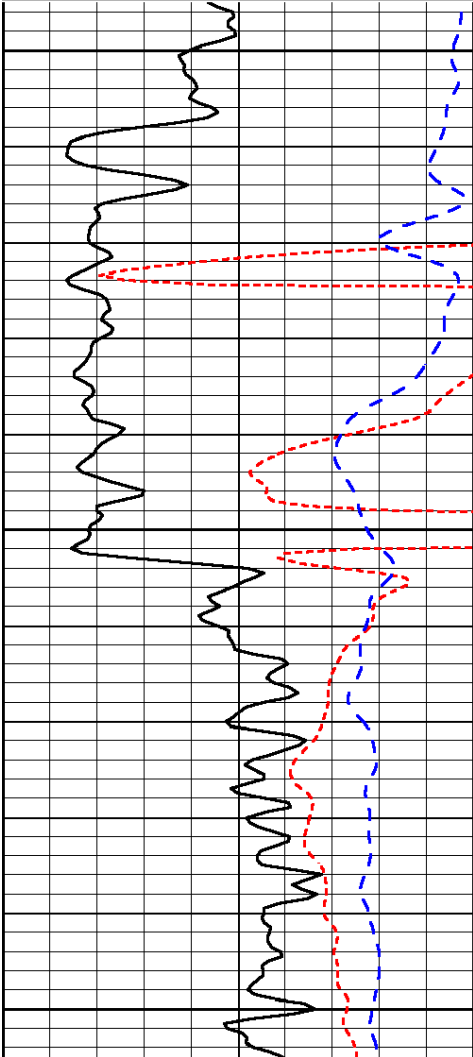
Shallow Resistivity
 50 (Ohm-m) 500
 50 Deep Resistivity (Ohm-m) 500

Database File: tdi_hd.db
 Dataset Pathname: dil/tdimain
 Presentation Format: dil
 Dataset Creation: Thu Dec 06 22:15:51 2012
 Charted by: Depth in Feet scaled 1:240

0	Gamma Ray (GAPI)	150
-160	RXO/RT	40
-200	SP (mV)	0

0.2	Deep Resistivity (Ohm-m)	2000
0.2	Medium Resistivity (Ohm-m)	2000
0.2	Shallow Resistivity (Ohm-m)	2000
10000	Line Tension (lb)	0

LSPD
(ft/min)



0	Gamma Ray (GAPI)	150
-160	RXO/RT	40
-200	SP (mV)	0

0.2	Deep Resistivity (Ohm-m)	2000
0.2	Medium Resistivity (Ohm-m)	2000
0.2	Shallow Resistivity (Ohm-m)	2000
10000	Line Tension (lb)	0

LSPD
(ft/min)

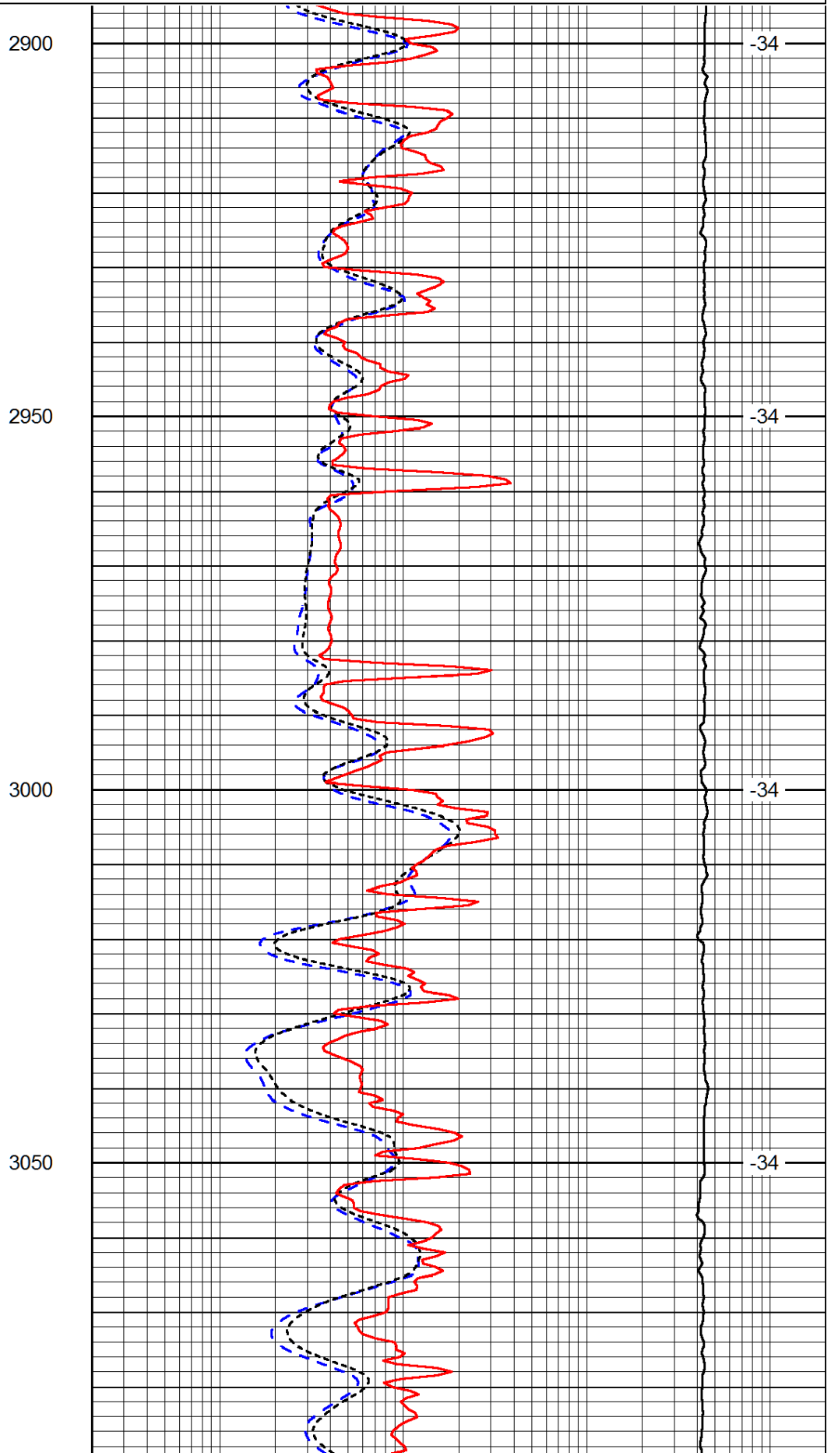
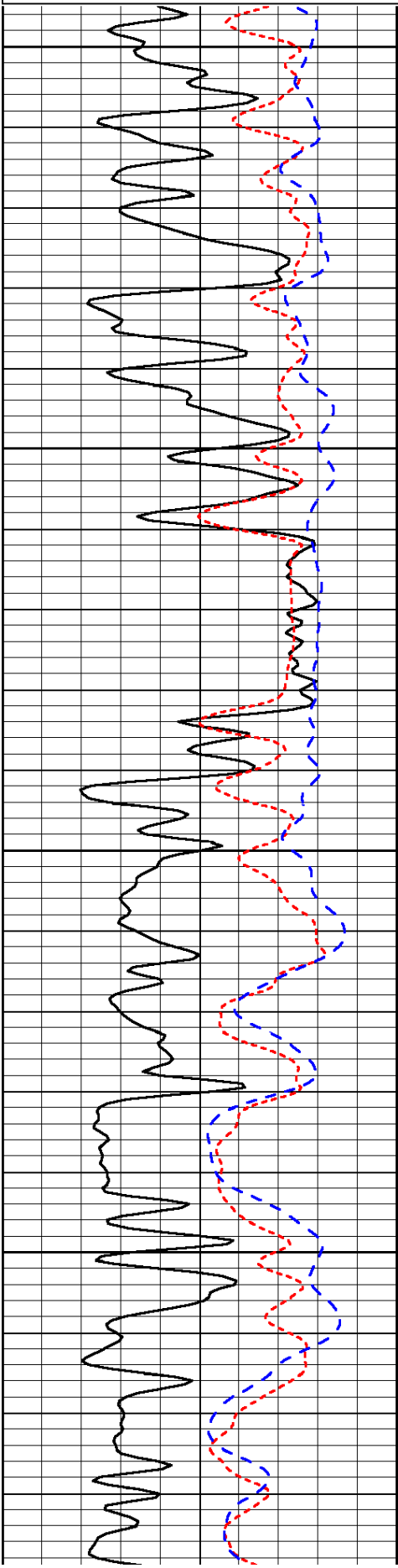
Database File: tdi_hd.db
 Dataset Pathname: dil/tdimain
 Presentation Format: dil
 Dataset Creation: Thu Dec 06 22:15:51 2012
 Charted by: Depth in Feet scaled 1:240

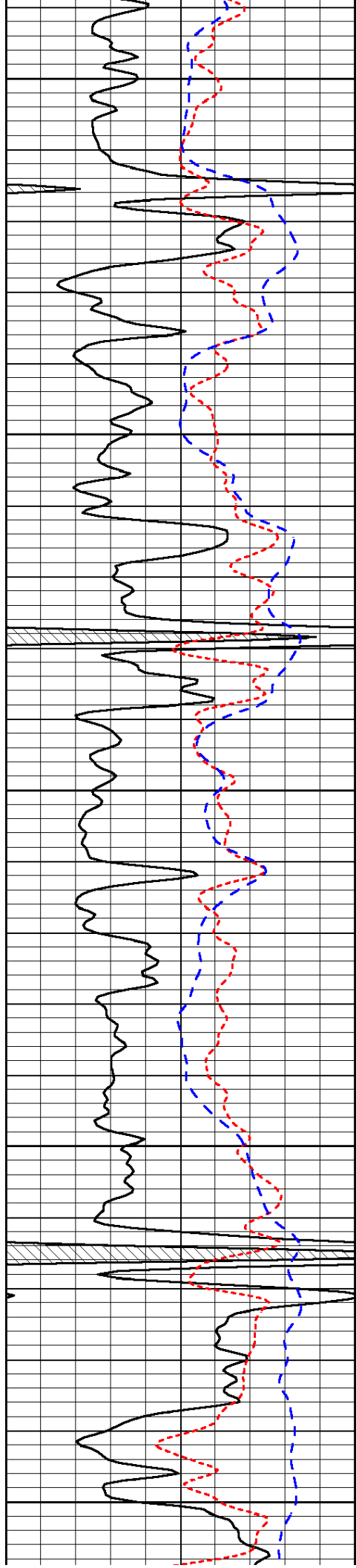
0	Gamma Ray (GAPI)	150
---	------------------	-----

0.2	Deep Resistivity (Ohm-m)	2000
-----	--------------------------	------

-160	RXO/RT	40
-200	SP (mV)	0

0.2	Medium Resistivity (Ohm-m)	2000
0.2	Shallow Resistivity (Ohm-m)	2000
10000	Line Tension (lb)	0





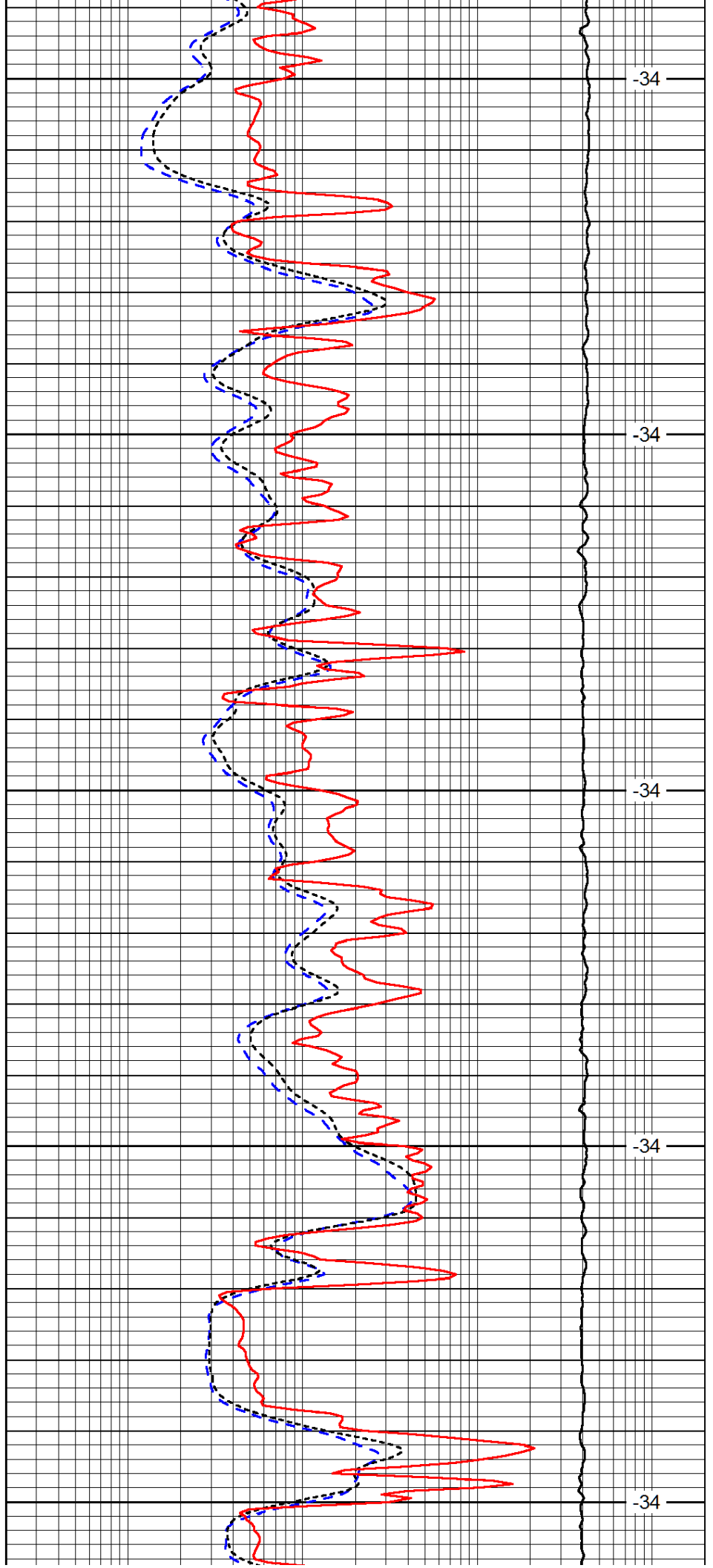
3100

3150

3200

3250

3300



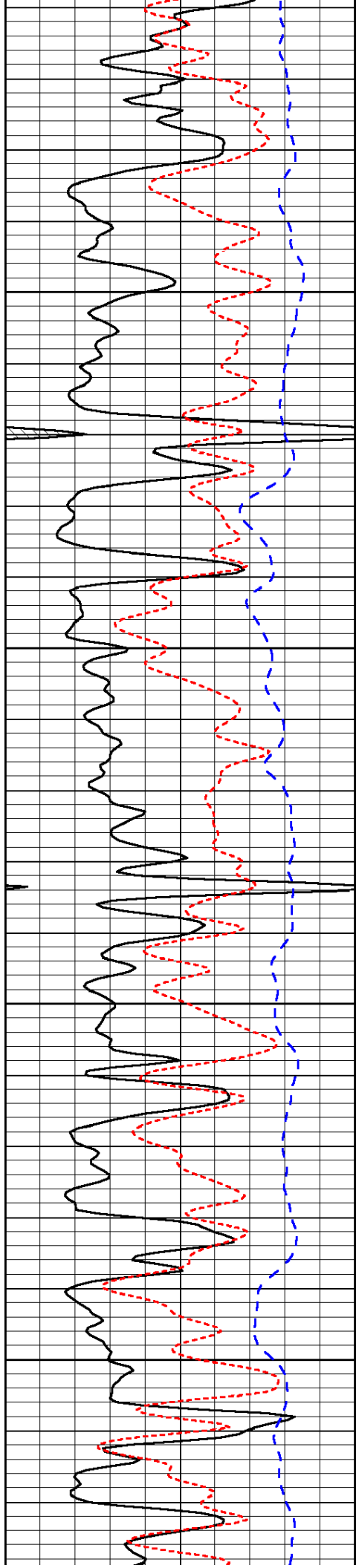
-34

-34

-34

-34

-34

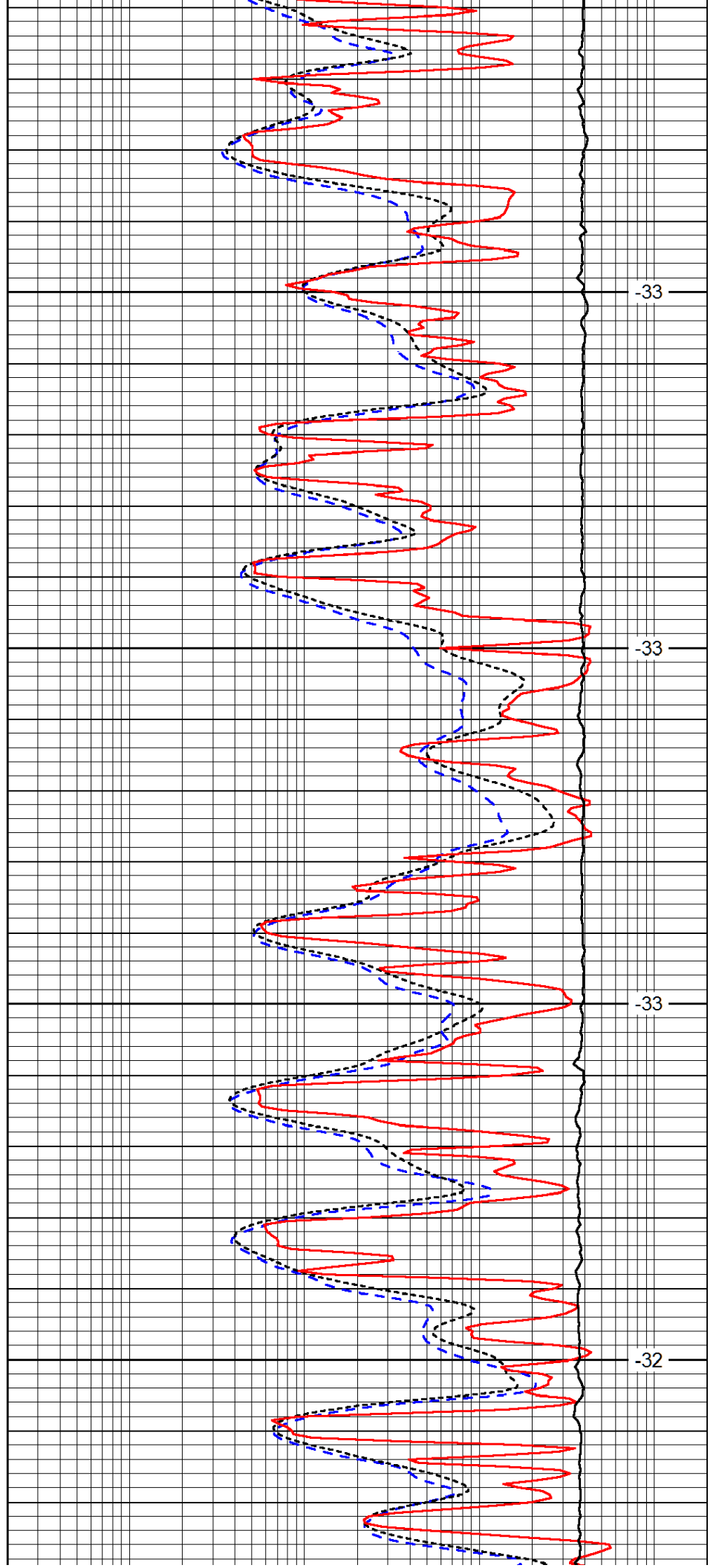


3350

3400

3450

3500

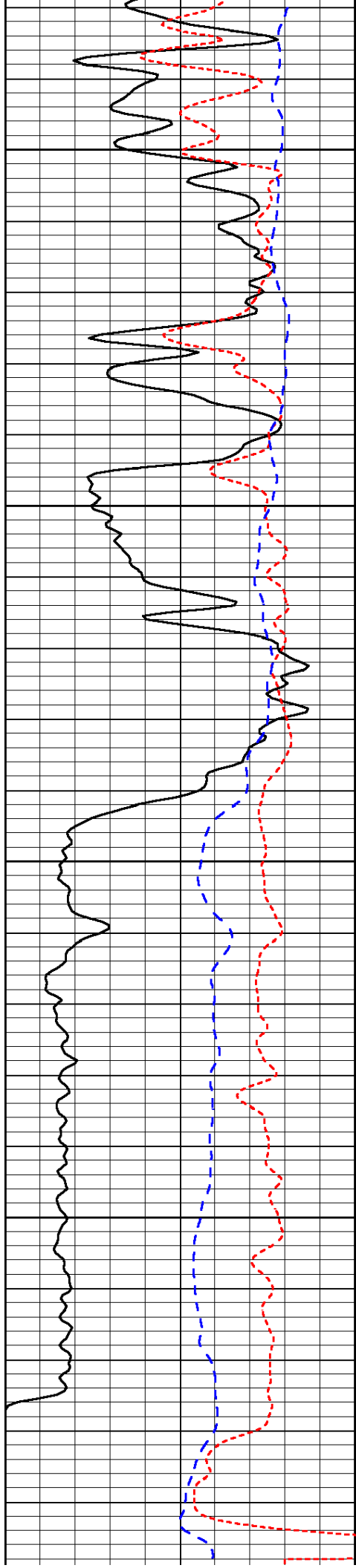


-33

-33

-33

-32

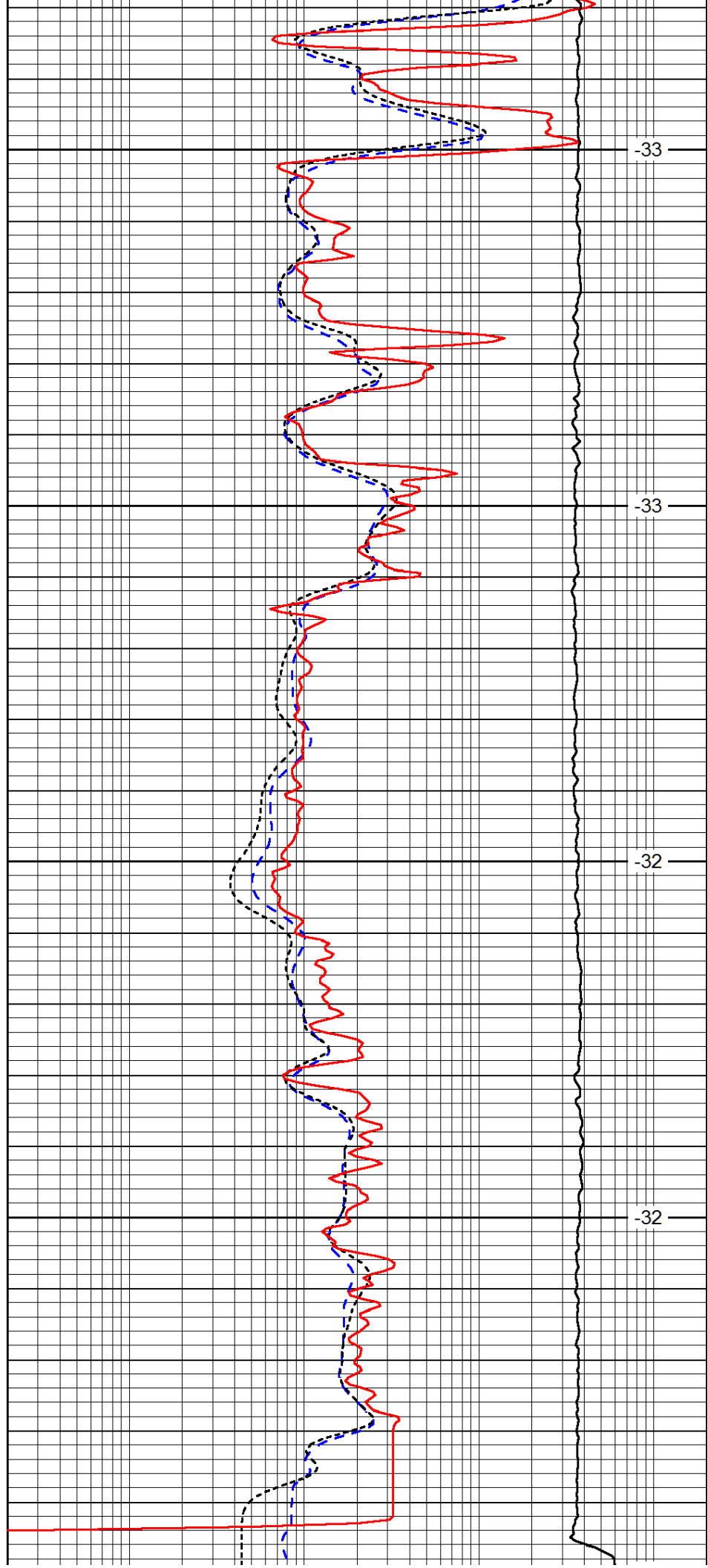


3550

3600

3650

3700



-33

-33

-32

-32

0	Gamma Ray (GAPI)	150
-160	RXO/RT	40
-200	SP (mV)	0

3750

0.2	Deep Resistivity (Ohm-m)	2000
0.2	Medium Resistivity (Ohm-m)	2000
0.2	Shallow Resistivity (Ohm-m)	2000
10000	Line Tension (lb)	0

LSPD
(ft/min)