



Pioneer Energy Services

# Microresistivity Log

API No.	15-035-24626-00-00	
Company	AAS Oil, Inc.	
Well	Parks "A" #1	
Field	Gibson	
County	Cowley	State
Location	NE NE 660' FNL / 660' FEL	Kansas
Sec: 29	Twp: 34S	Rge: 3E
Permanent Datum	Ground Level	Elevation 1138
Log Measured From	Kelly Bushing	8 Ft. Above Perm. Datum
Drilling Measured From	Kelly Bushing	
Date	12/5/2014	
Run Number	Two	
Depth Driller	3675	
Depth Logger	3670	
Bottom Logged Interval	3669	
Top Log Interval	2500	
Casing Driller	8.625 @ 320	
Casing Logger	324	
Bit Size	7.875	
Type Fluid in Hole	Chemical	
Salinity, ppm CL	1500	
Density / Viscosity	8.9   45	
pH / Fluid Loss	9.0   8.8	
Source of Sample	Flowline	
Rm @ Meas. Temp	0.89 @ 70	
Rmf @ Meas. Temp	0.67 @ 70	
Rmc @ Meas. Temp	1.20 @ 70	
Source of Rmf / Rmc	Charts	
Rm @ BHT	0.55 @ 113	
Operating Rig Time	4 Hours	
Max Rec. Temp. F	113	
Equipment Number	51	
Location	Hays	
Recorded By	R. Barnhart	
Witnessed By	Dan Johnson	

Other Services CNL/CDL DIL	Elevation K.B. 1146 D.F. 1138 G.L. 1138
----------------------------------	--

<<< Fold Here >>>

All interpretations are opinions based on inferences from electrical or other measurements and we cannot and do not guarantee the accuracy or correctness of any interpretation, and we shall not, except in the case of gross or willful negligence on our part, be liable or responsible for any loss, costs, damages, or expenses incurred or sustained by anyone resulting from any interpretation made by any of our officers, agents or employees. These interpretations are also subject to our general terms and conditions set out in our current Price Schedule.

### Comments

Thank you for using Log-Tech, Inc.  
(785) 625-3858

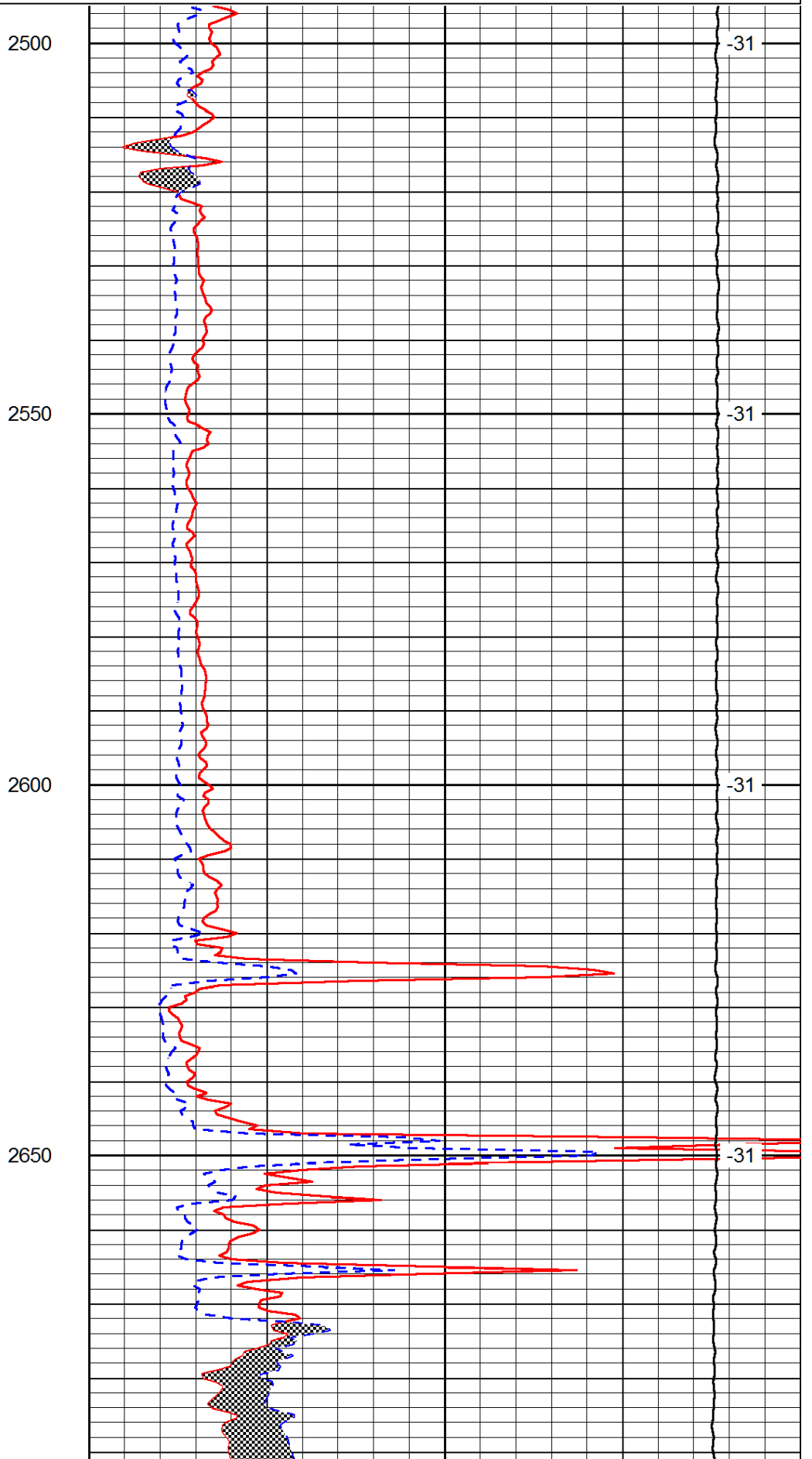
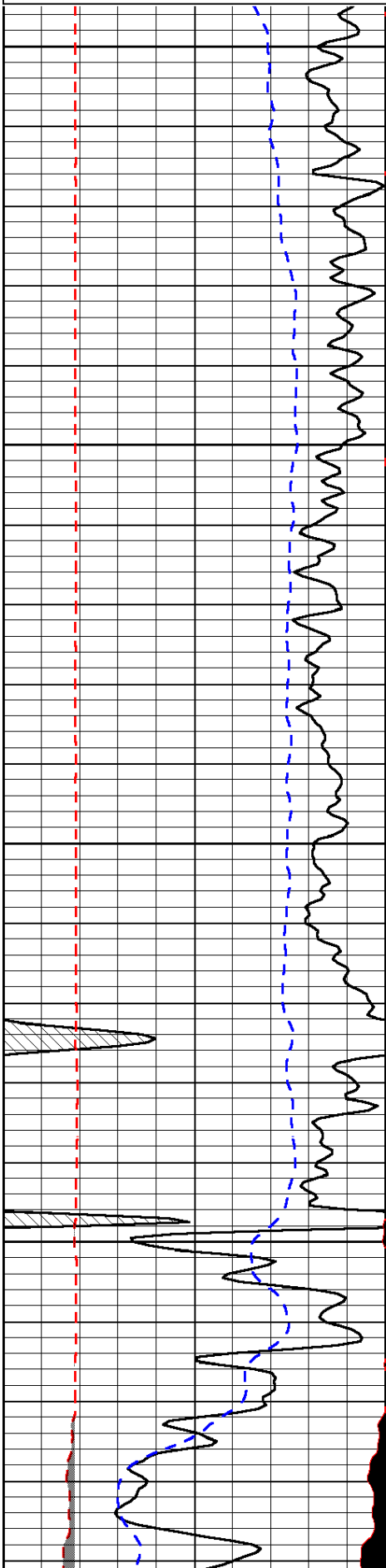
I-35S to S.Haven Exit: E to 21 Rd., (2E of Guda Springs Rd.)  
1N, 1/4W, S into

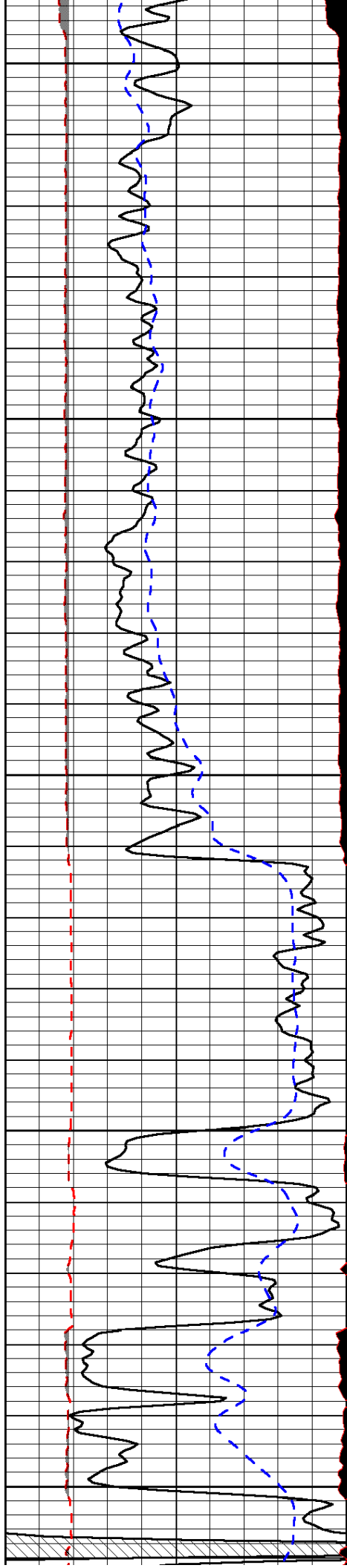
Database File: aas\_hd.db  
 Dataset Pathname: dil/aasmain  
 Presentation Format: micro  
 Dataset Creation: Fri Dec 05 12:36:47 2014  
 Charted by: Depth in Feet scaled 1:240

0	Gamma Ray	150
6	MCAL (GAPI)	16
2.875	Mud Cake (GAPI)	7.875
-200	SP (mV)	0

0	Micro Inverse 1 X 1	40
0	Micro Normal 2"	40
10000	Line Weight	0

LSPD





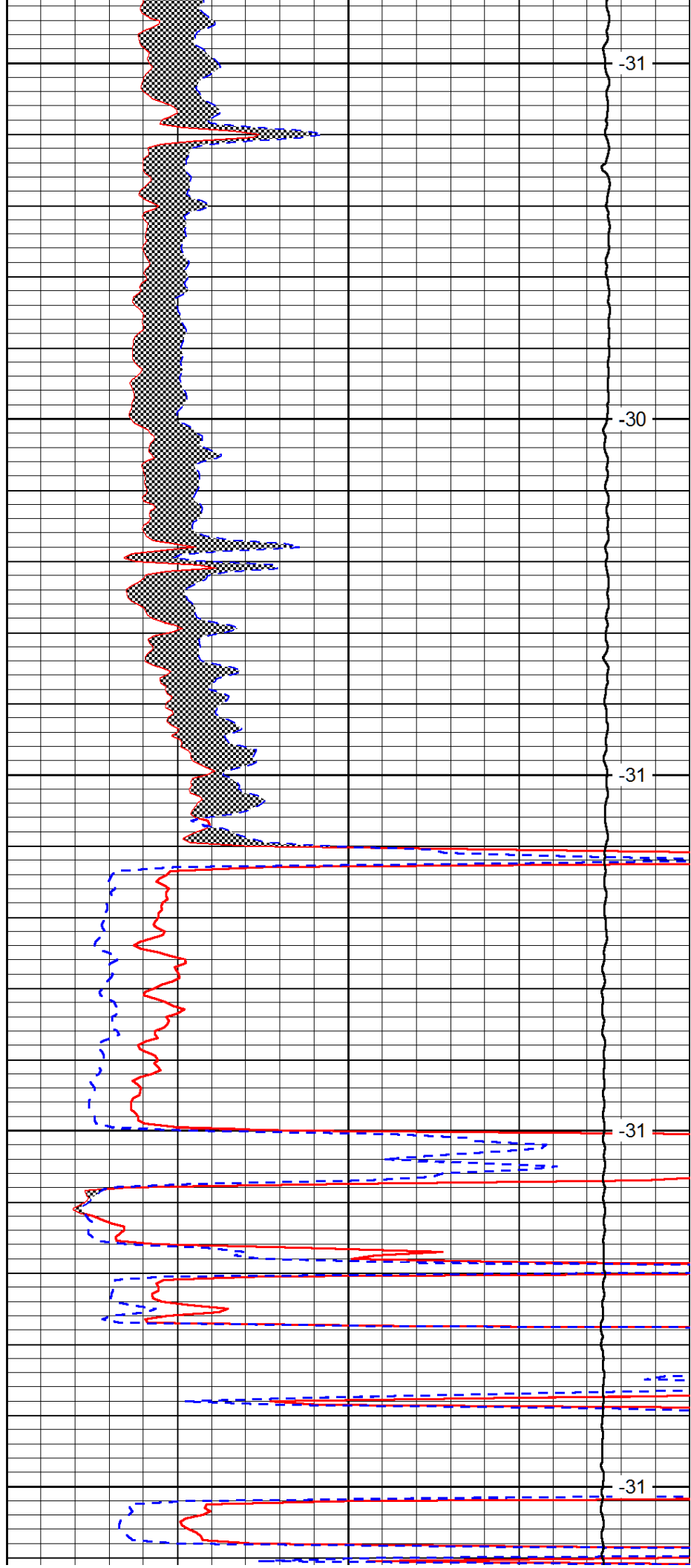
2700

2750

2800

2850

2900



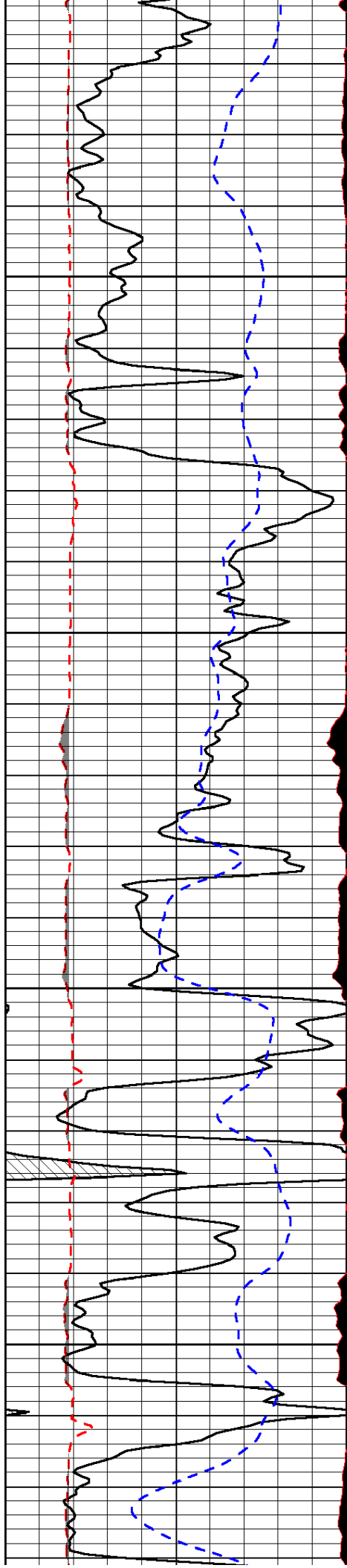
-31

-30

-31

-31

-31

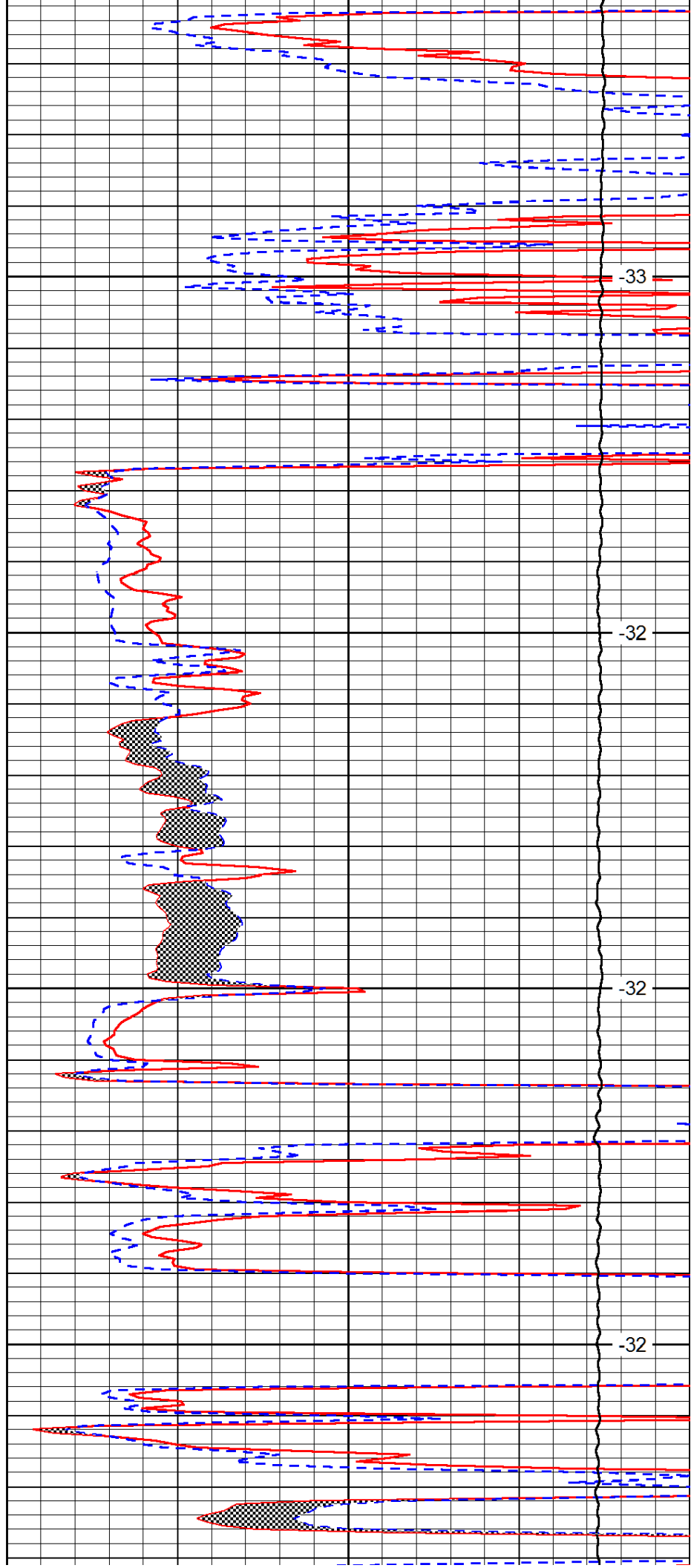


2950

3000

3050

3100

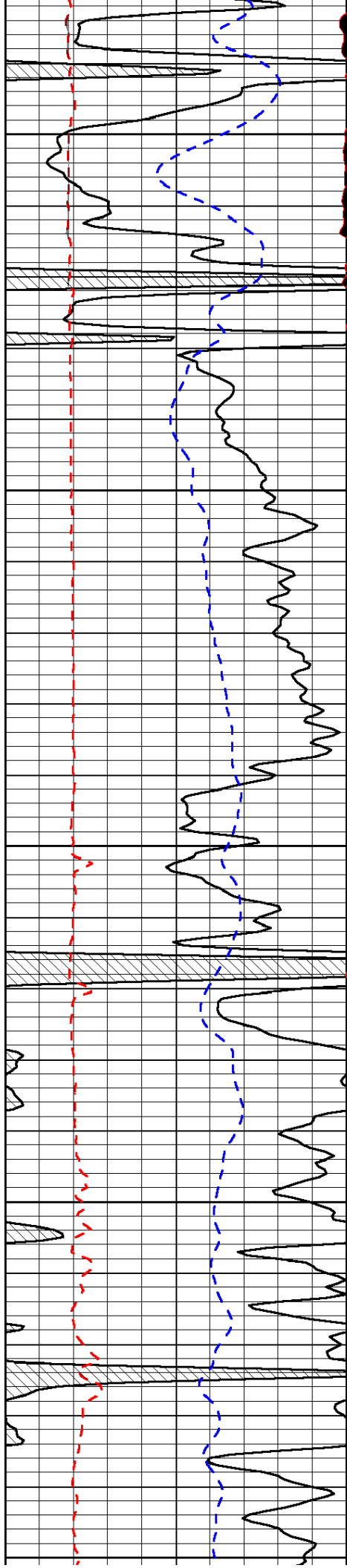


-33

-32

-32

-32



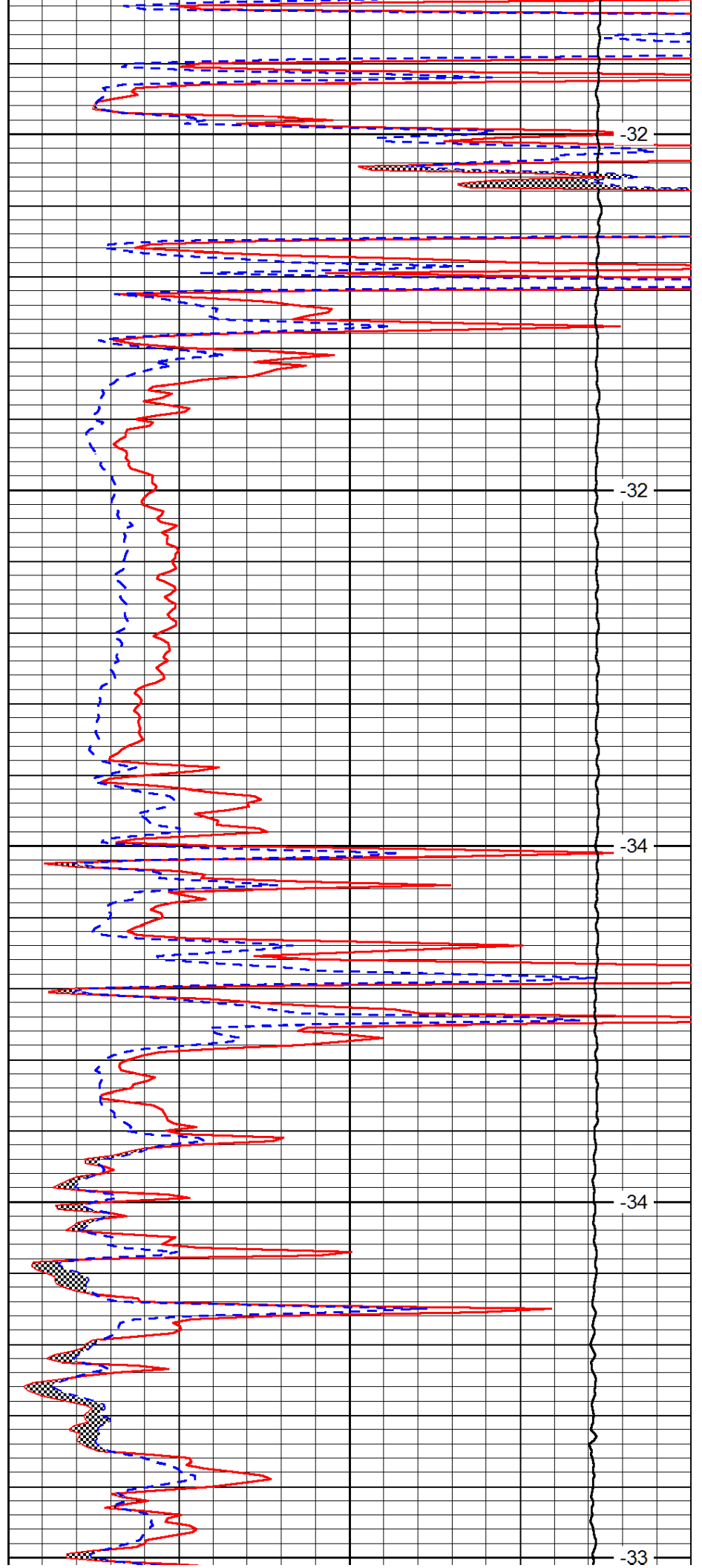
3150

3200

3250

3300

3350



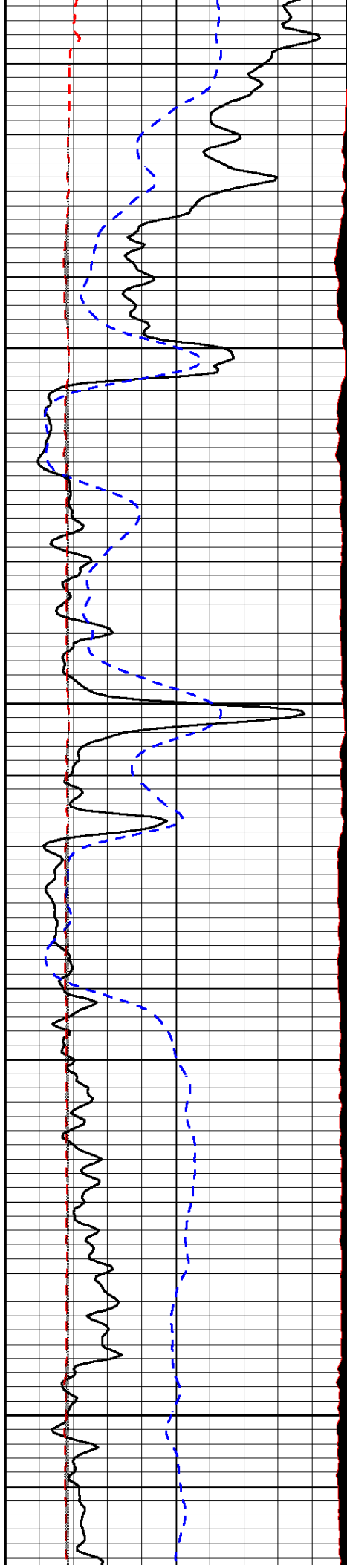
-32

-32

-34

-34

-33

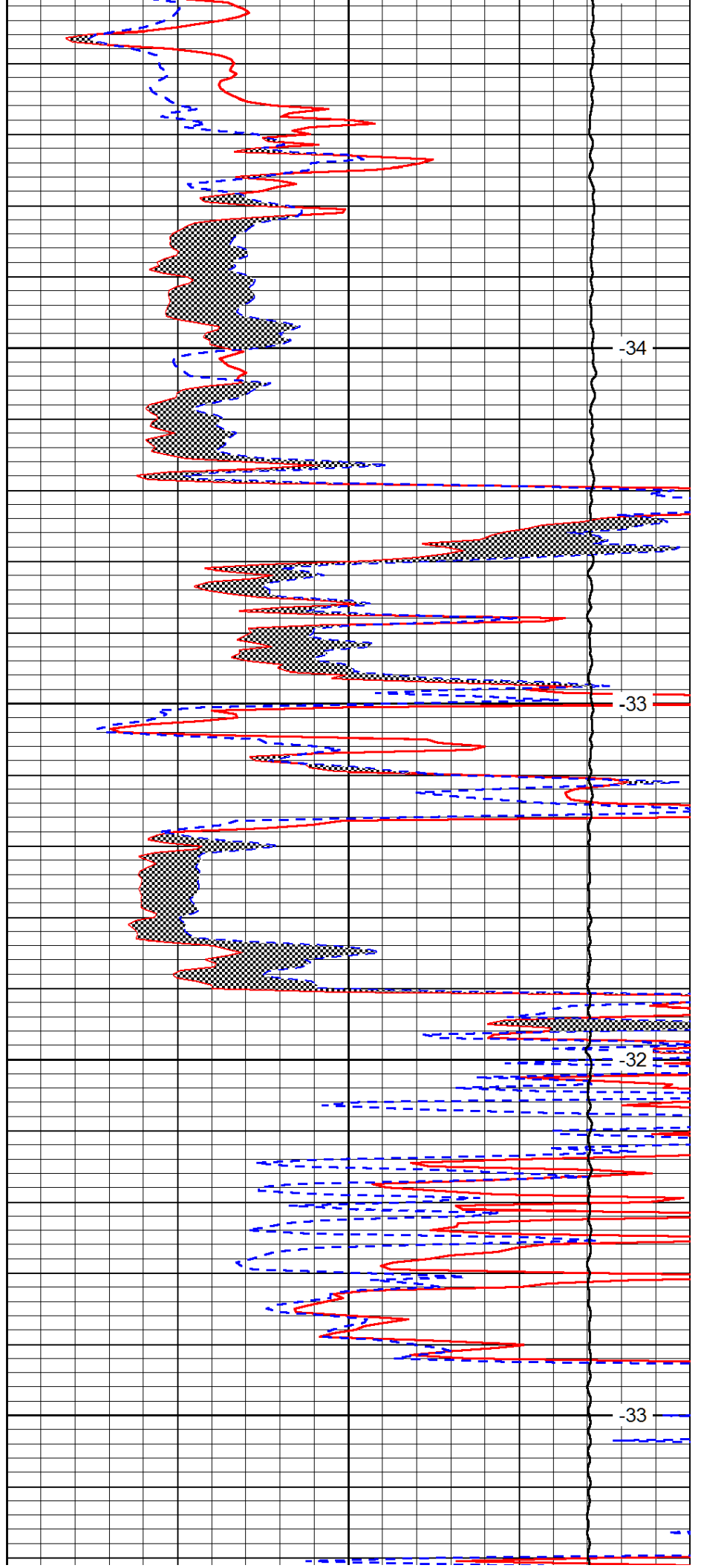


3400

3450

3500

3550

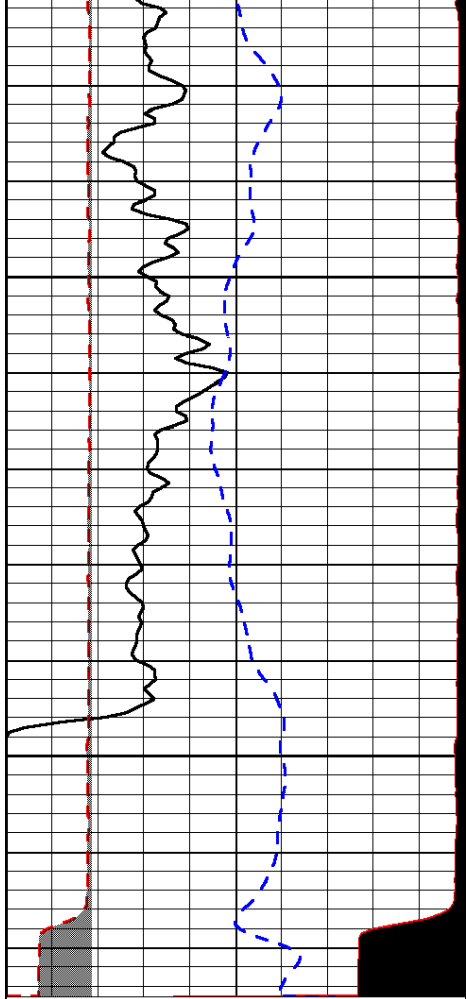


-34

-33

-32

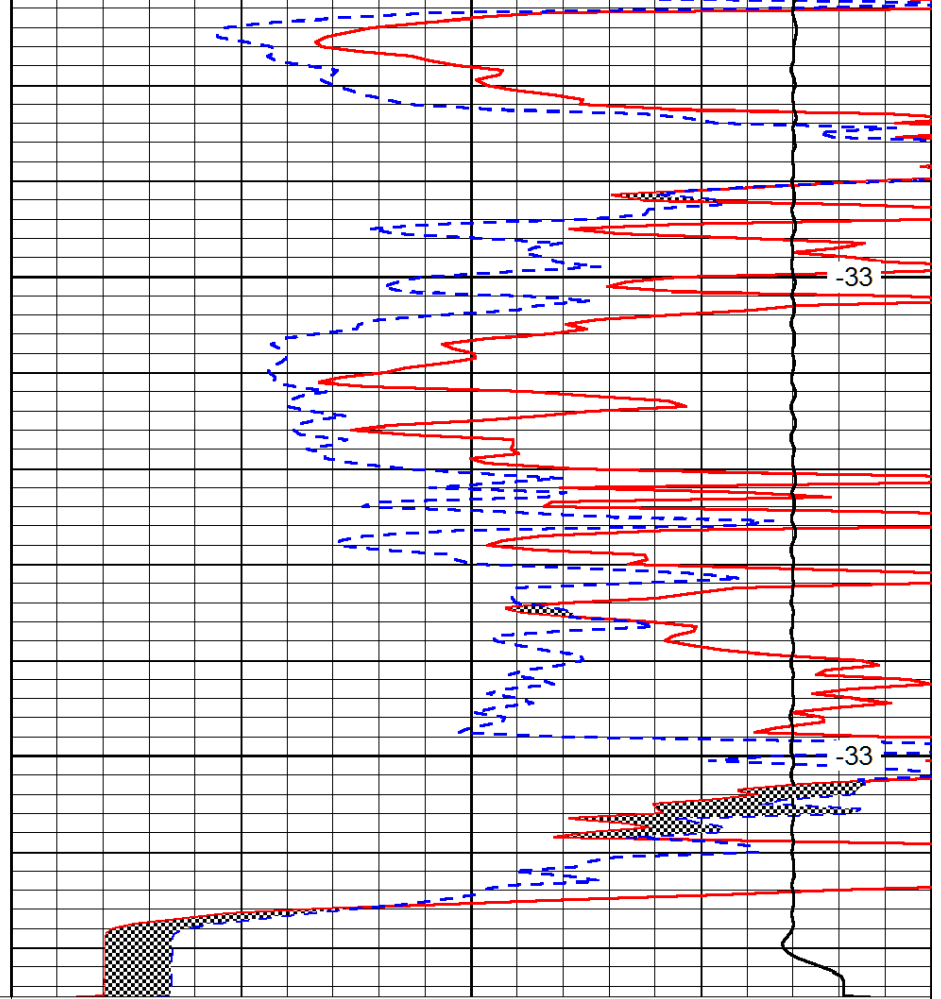
-33



0	Gamma Ray	150
6	MCAL (GAPI)	16
2.875	Mud Cake (GAPI)	7.875
-200	SP (mV)	0

3600

3650



0	Micro Inverse 1 X 1	40
0	Micro Normal 2"	40
10000	Line Weight	0

LSPD