



Pioneer Energy Services

Dual Induction Log

API No.	15-035-24626-00-00	
Company	AAS Oil, Inc.	
Well	Parks "A" #1	
Field	Gibson	
County	Cowley	State
Location	NE NE 660' FNL / 660' FEL	Kansas
Sec: 29	Twp: 34S	Rge: 3E
Permanent Datum	Ground Level	Elevation 1138
Log Measured From	Kelly Bushing	8 Ft. Above Perm. Datum
Drilling Measured From	Kelly Bushing	
		Other Services CNL/CDL MEL
		Elevation K.B. 1146 D.F. 1138 G.L. 1138

Date	12/5/2014
Run Number	One
Depth Driller	3675
Depth Logger	3670
Bottom Logged Interval	3669
Top Log Interval	300
Casing Driller	8.625 @ 320
Casing Logger	324
Bit Size	7.875
Type Fluid in Hole	Chemical
Salinity, ppm CL	1500
Density / Viscosity	8.9 45
pH / Fluid Loss	9.0 8.8
Source of Sample	Flowline
Rm @ Meas. Temp	0.89 @ 70
Rmf @ Meas. Temp	0.67 @ 70
Rmc @ Meas. Temp	1.20 @ 70
Source of Rmf / Rmc	Charts
Rm @ BHT	0.55 @ 113
Operating Rig Time	4 Hours
Max Rec. Temp. F	113
Equipment Number	51
Location	Hays
Recorded By	R. Barnhart
Witnessed By	Dan Johnson

<<< Fold Here >>>

All interpretations are opinions based on inferences from electrical or other measurements and we cannot and do not guarantee the accuracy or correctness of any interpretation, and we shall not, except in the case of gross or willful negligence on our part, be liable or responsible for any loss, costs, damages, or expenses incurred or sustained by anyone resulting from any interpretation made by any of our officers, agents or employees. These interpretations are also subject to our general terms and conditions set out in our current Price Schedule.

Comments

Thank you for using Log-Tech, Inc.
(785) 625-3858

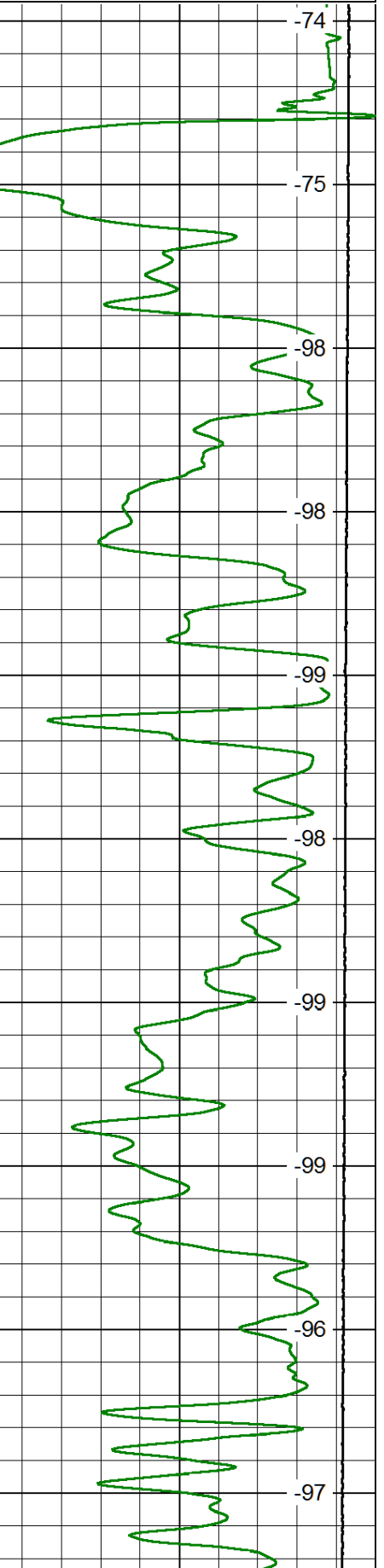
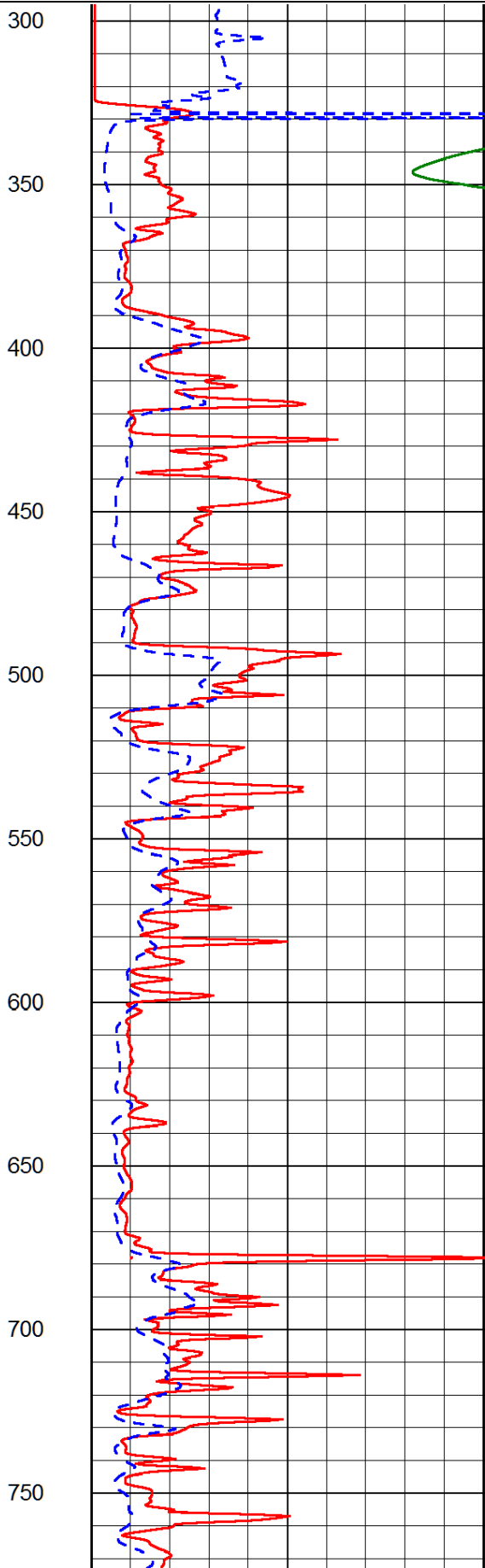
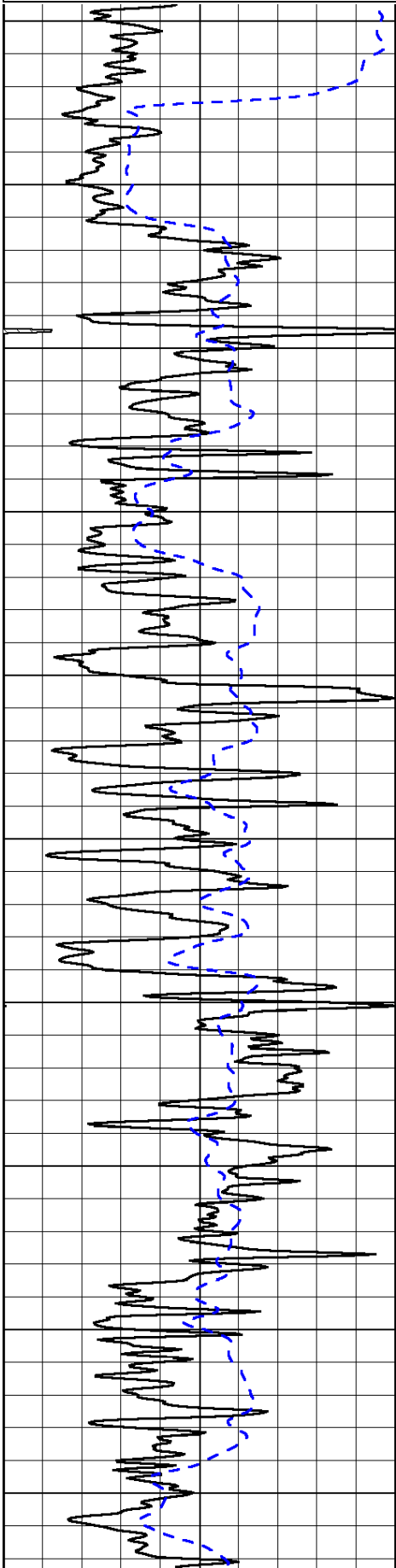
I-35S to S.Haven Exit: E to 21 Rd., (2E of Guda Springs Rd.)
1N, 1/4W, S into

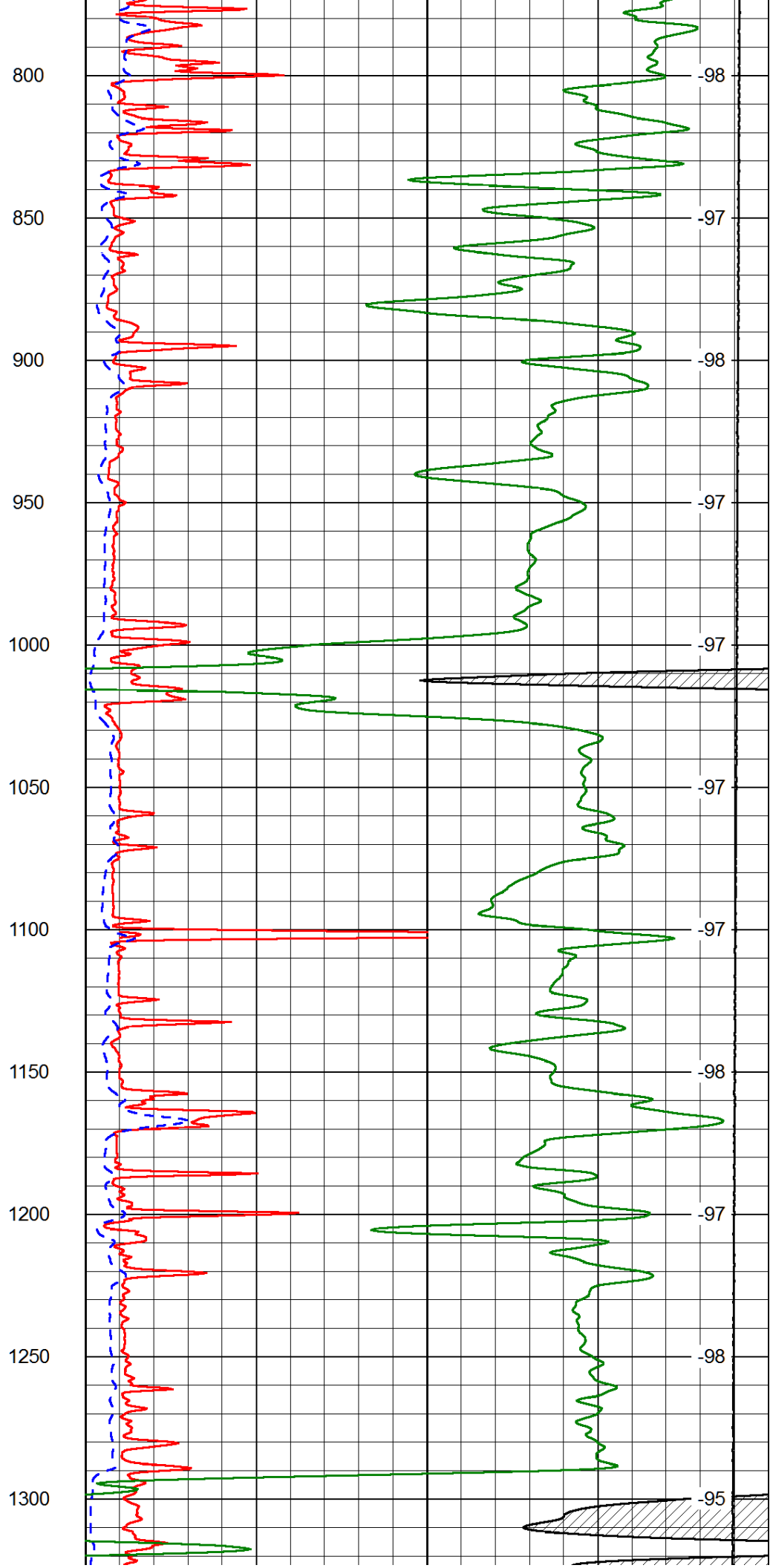
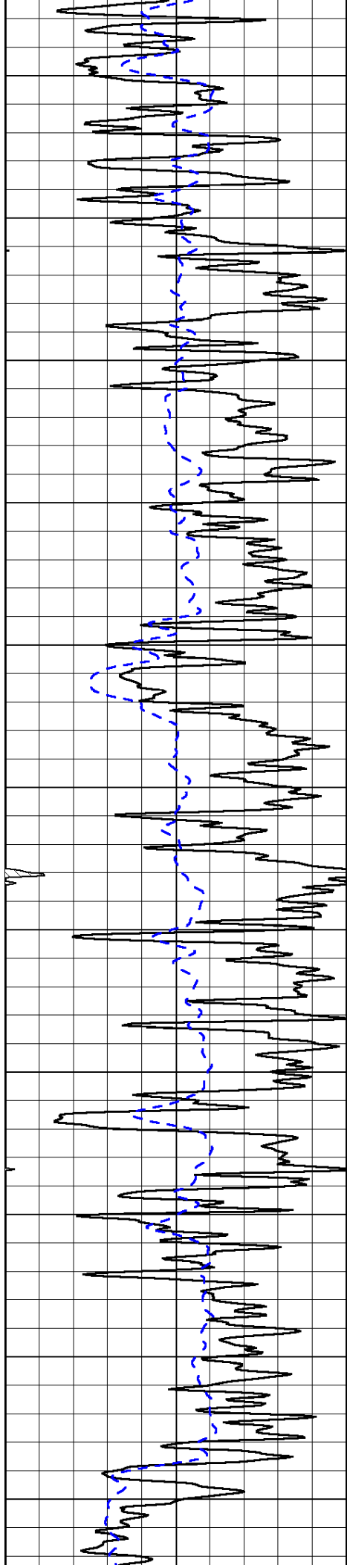
Database File: aas_hd.db
 Dataset Pathname: dil/aasmain
 Presentation Format: dil2in
 Dataset Creation: Fri Dec 05 12:36:47 2014
 Charted by: Depth in Feet scaled 1:600

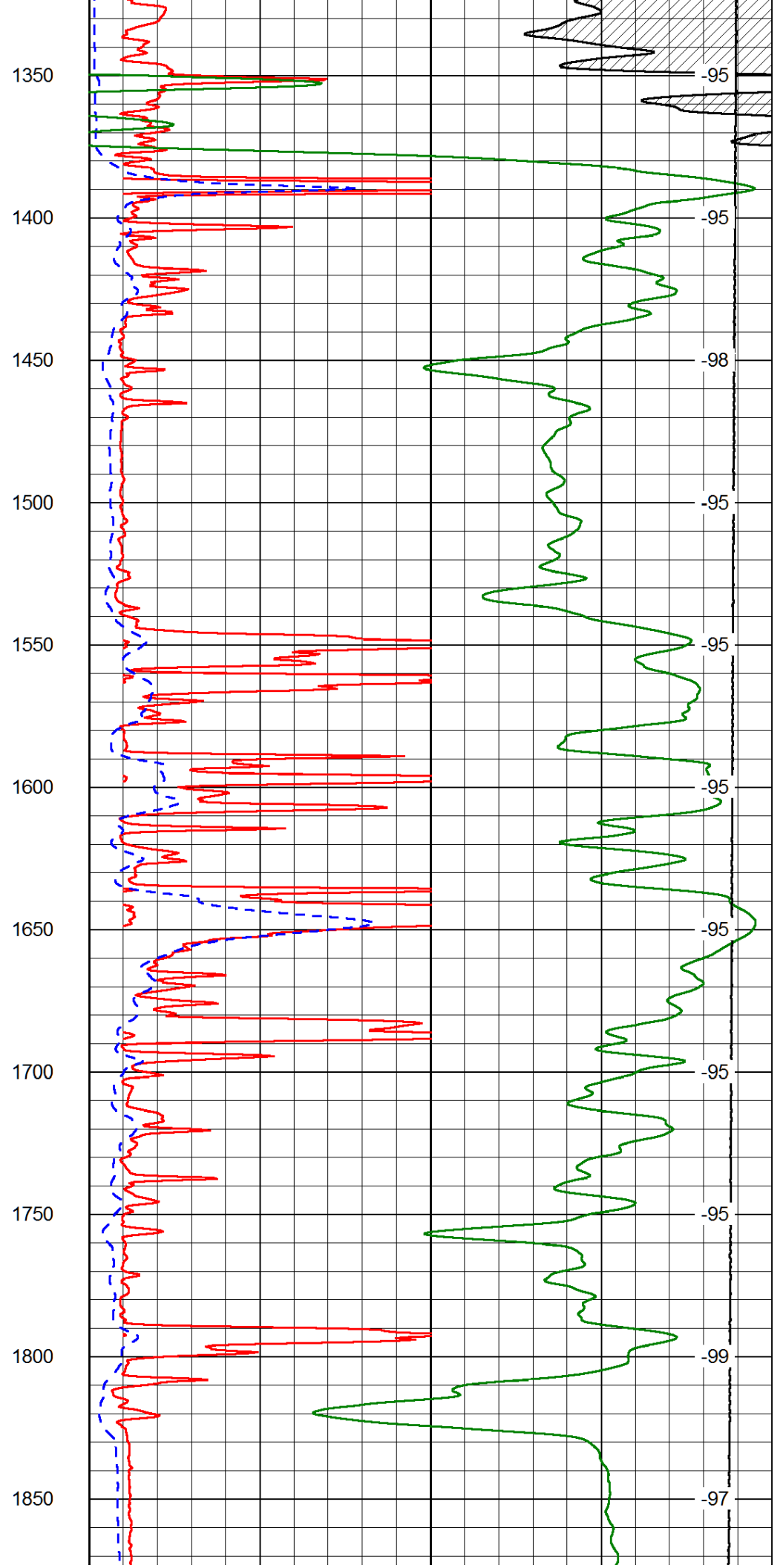
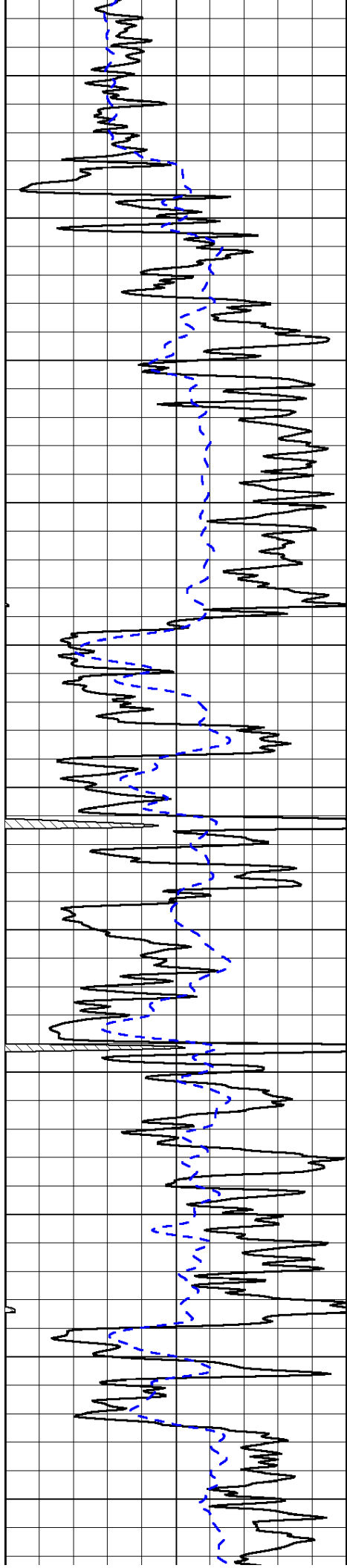
0	Gamma Ray	150
-200	SP (mV)	0

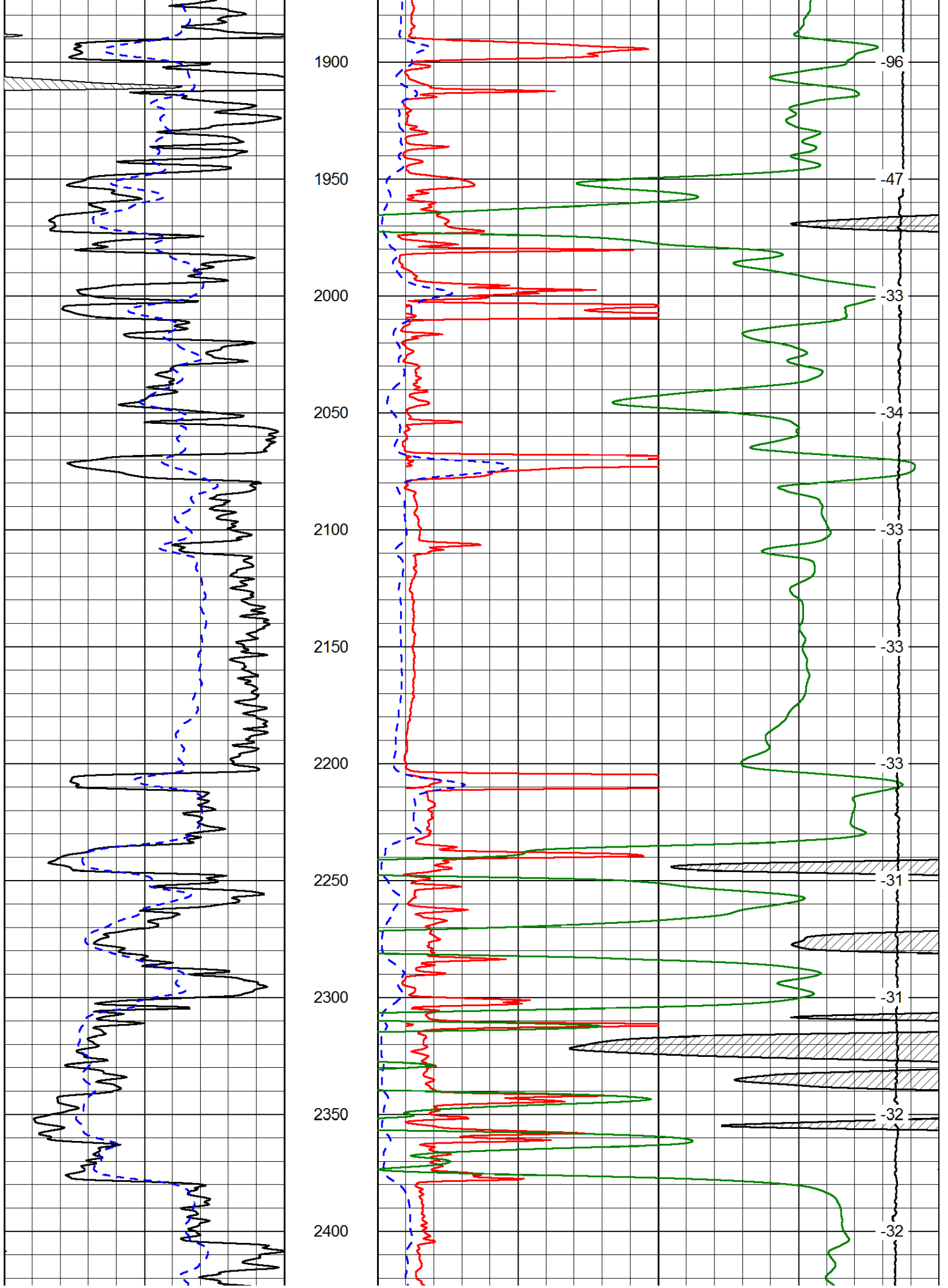
0	Shallow Resistivity	50
0	Deep Resistivity	50
1000	Conductivity	0
15000	Line Tension	0

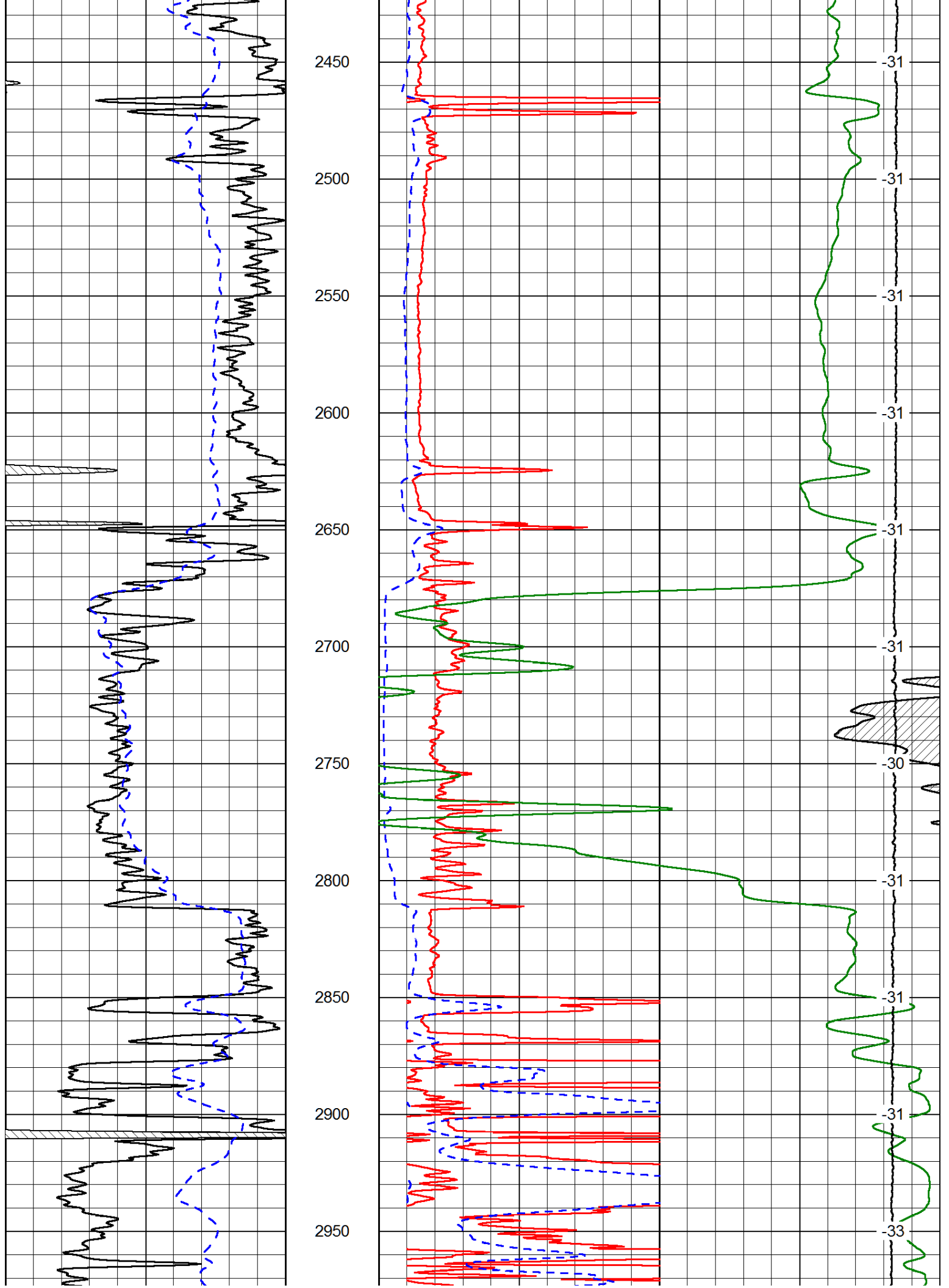
LSPD	0
------	---

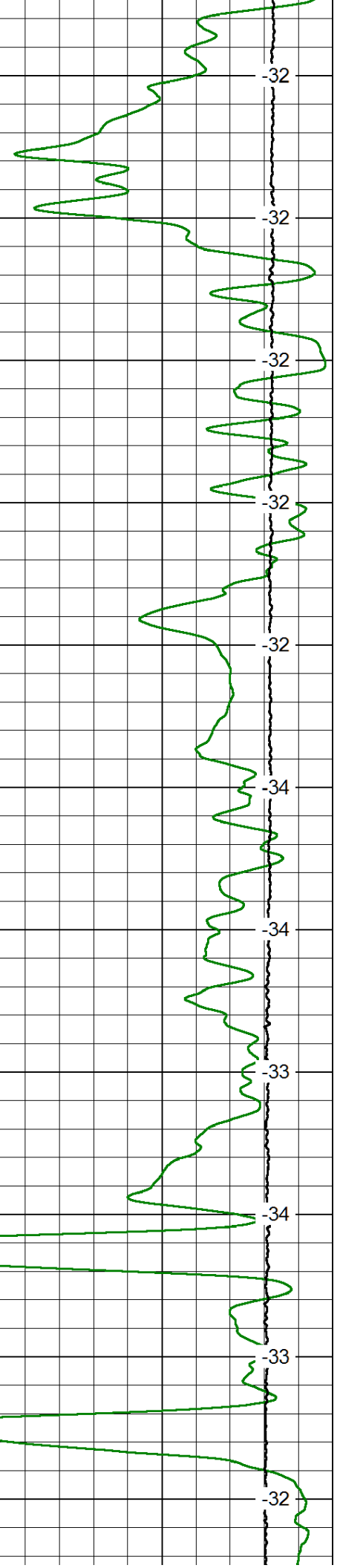
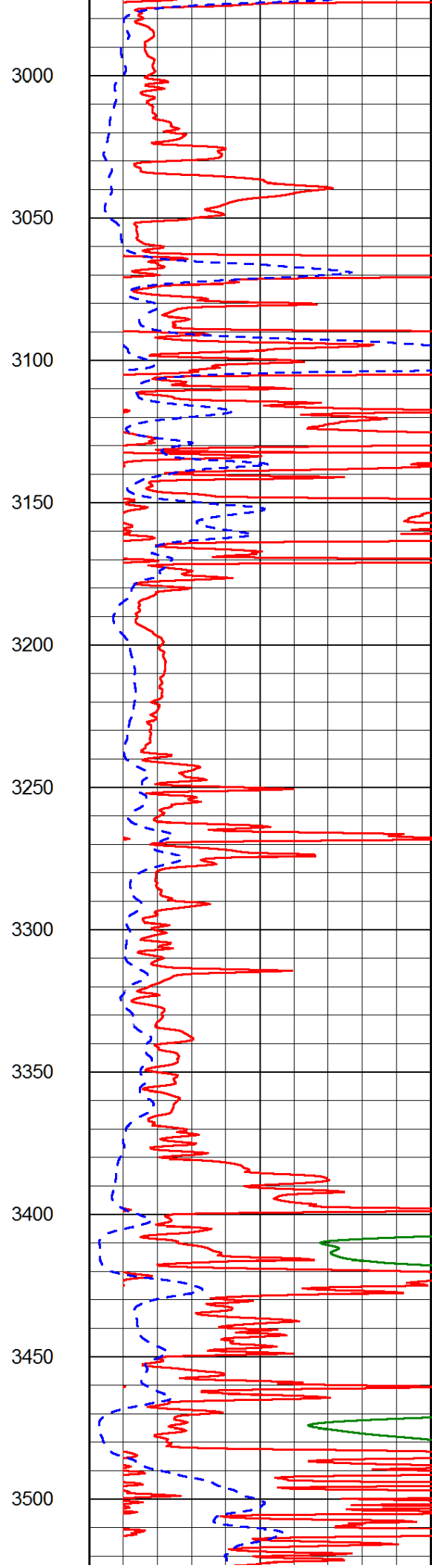
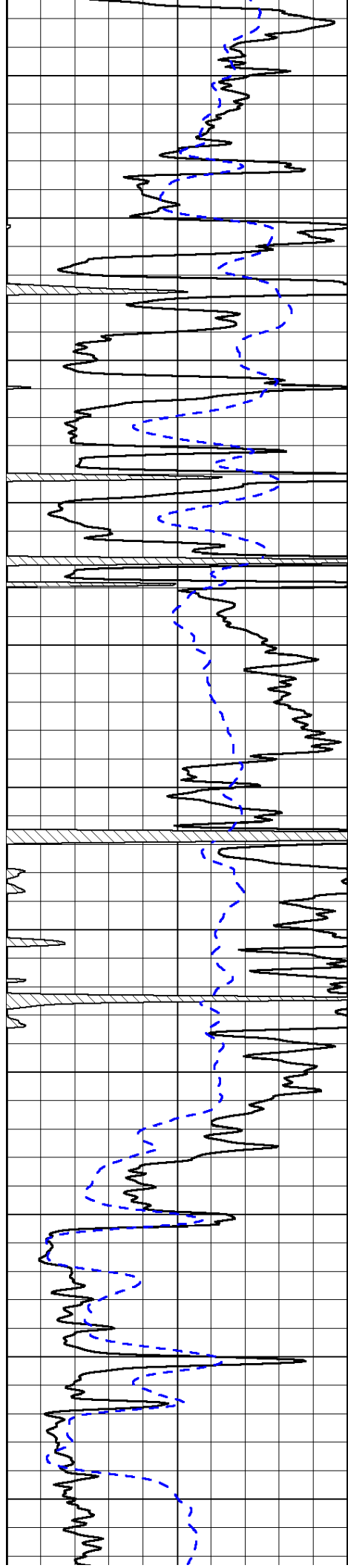


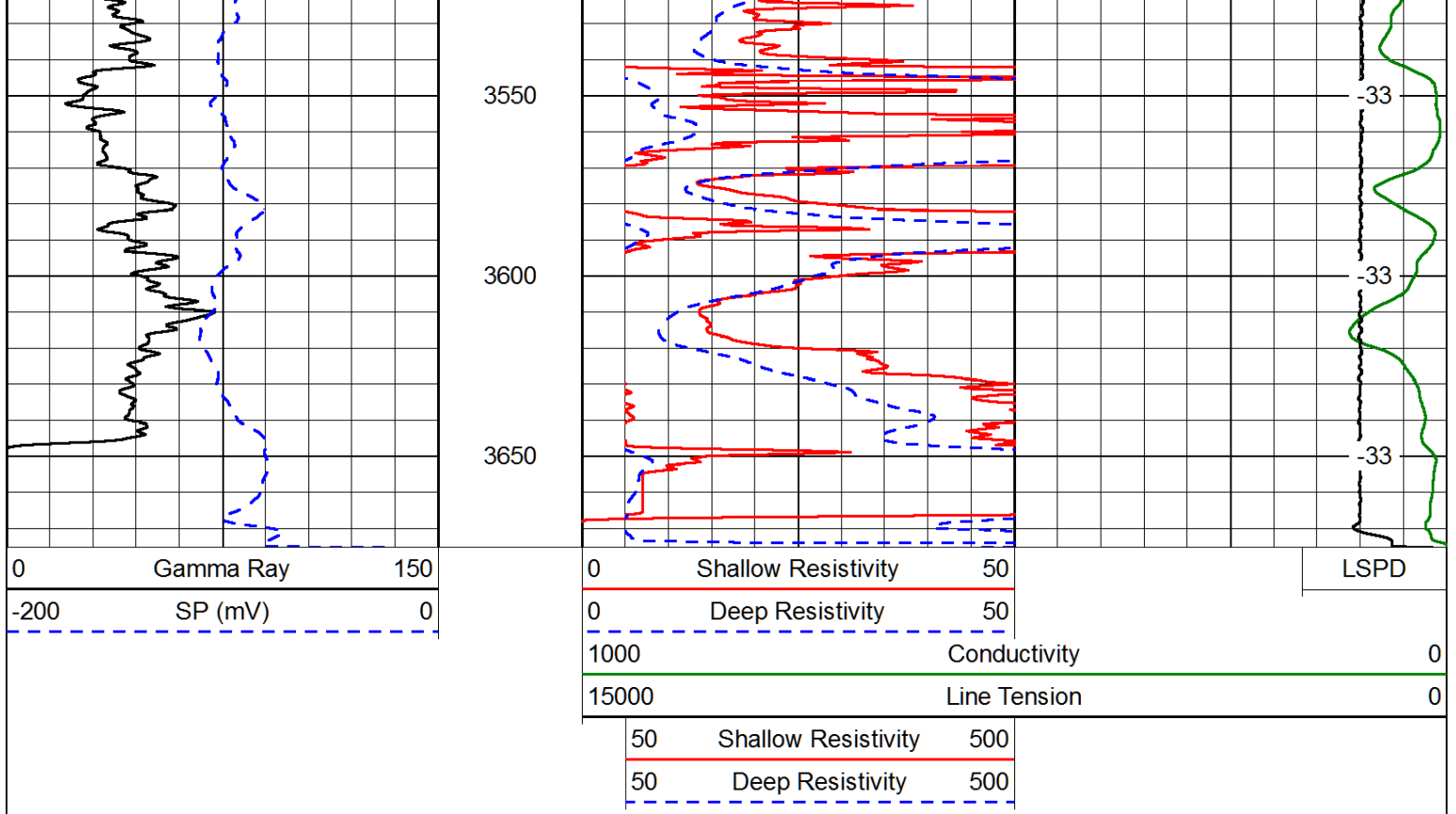




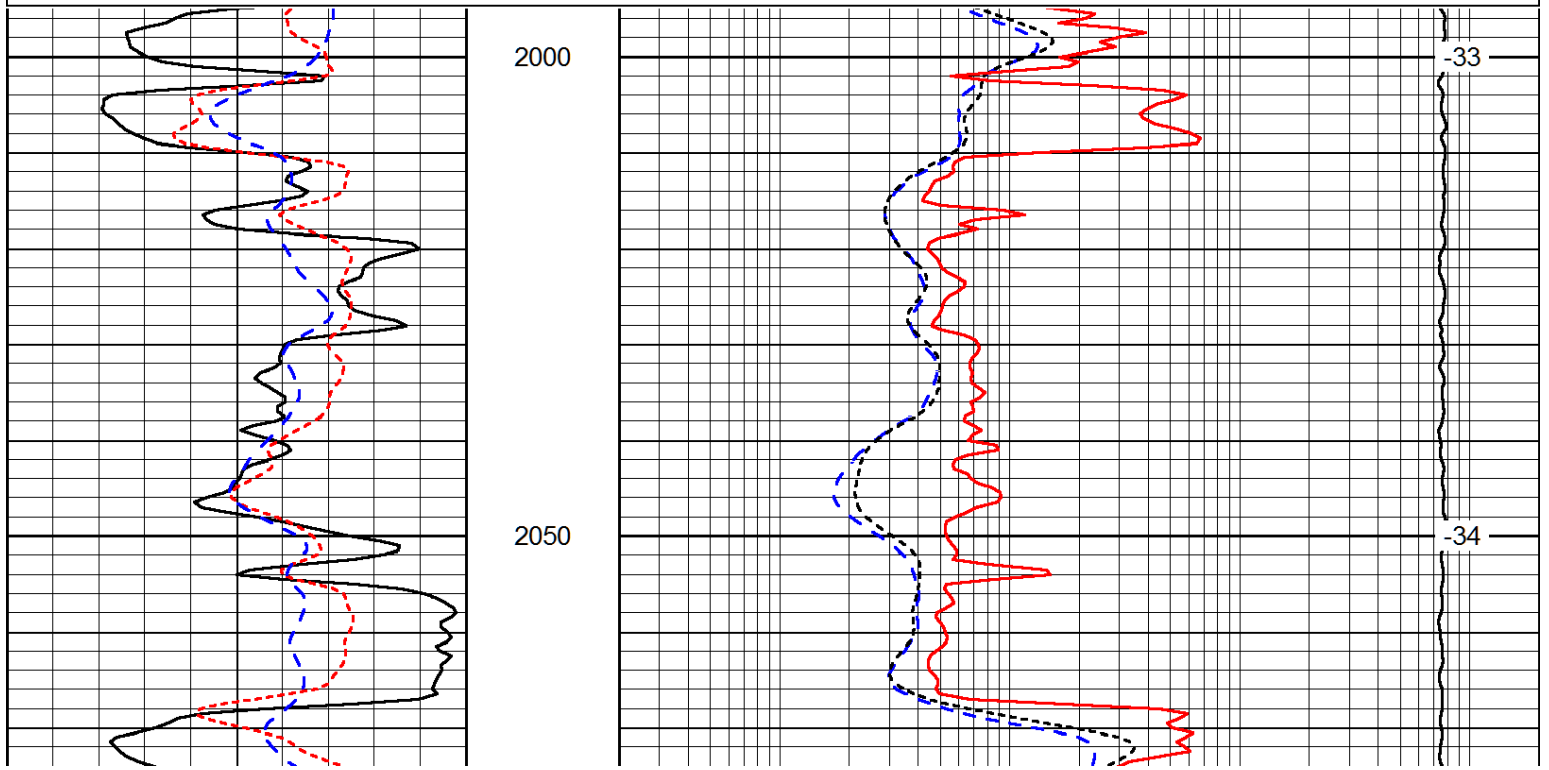
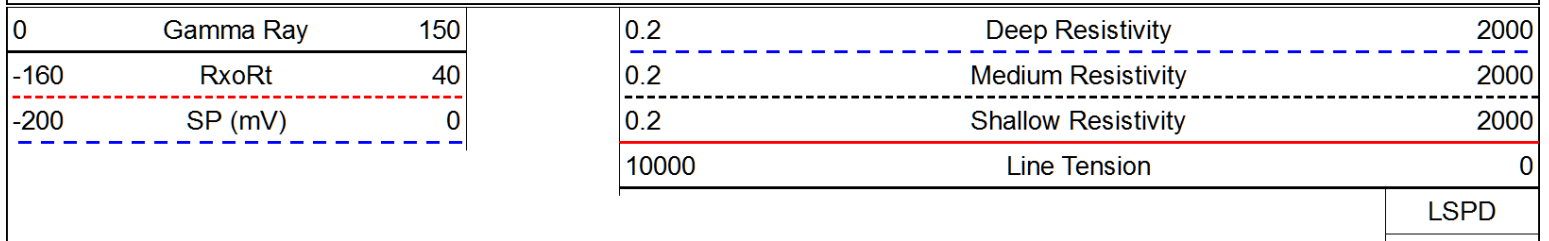


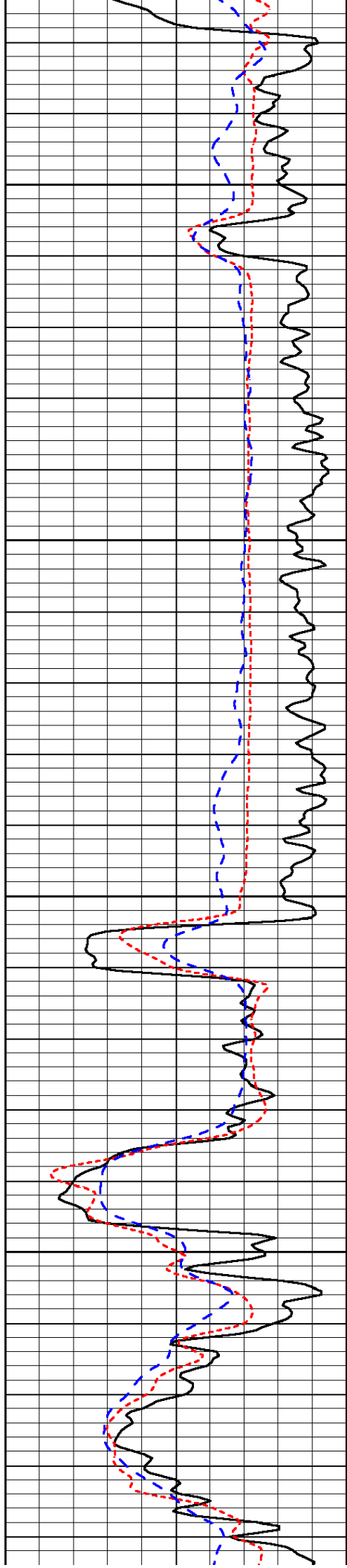






Database File: aas_hd.db
 Dataset Pathname: dil/aasmain
 Presentation Format: dil
 Dataset Creation: Fri Dec 05 12:36:47 2014
 Charted by: Depth in Feet scaled 1:240



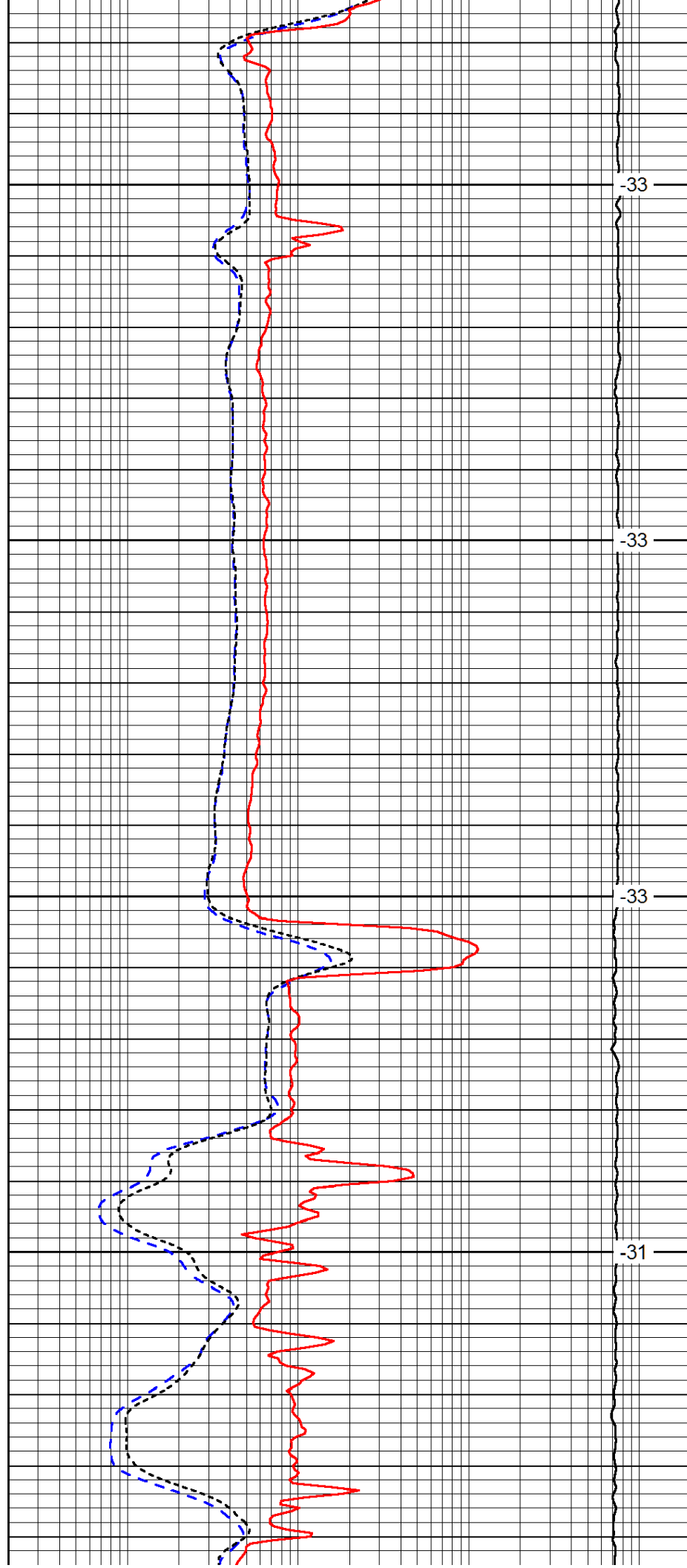


2100

2150

2200

2250

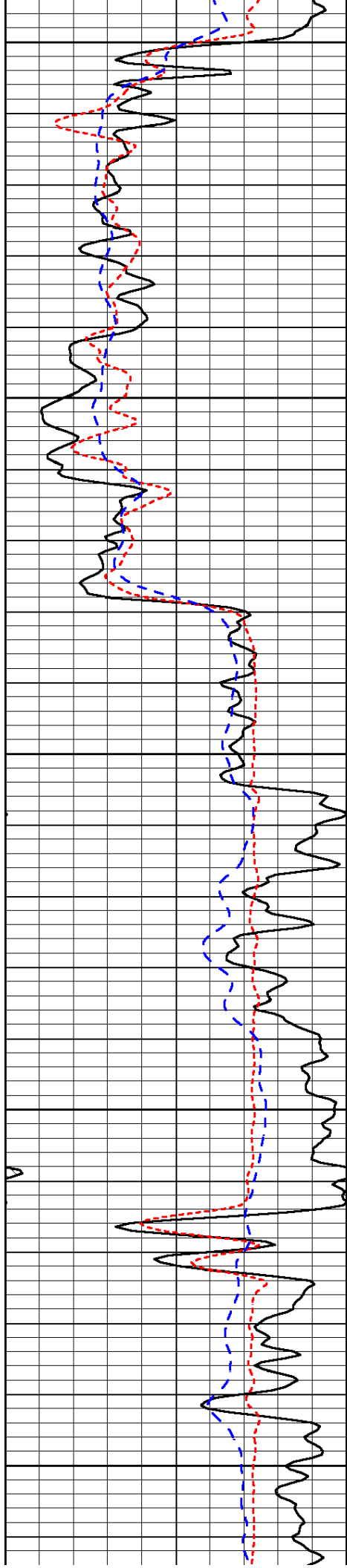


-33

-33

-33

-31



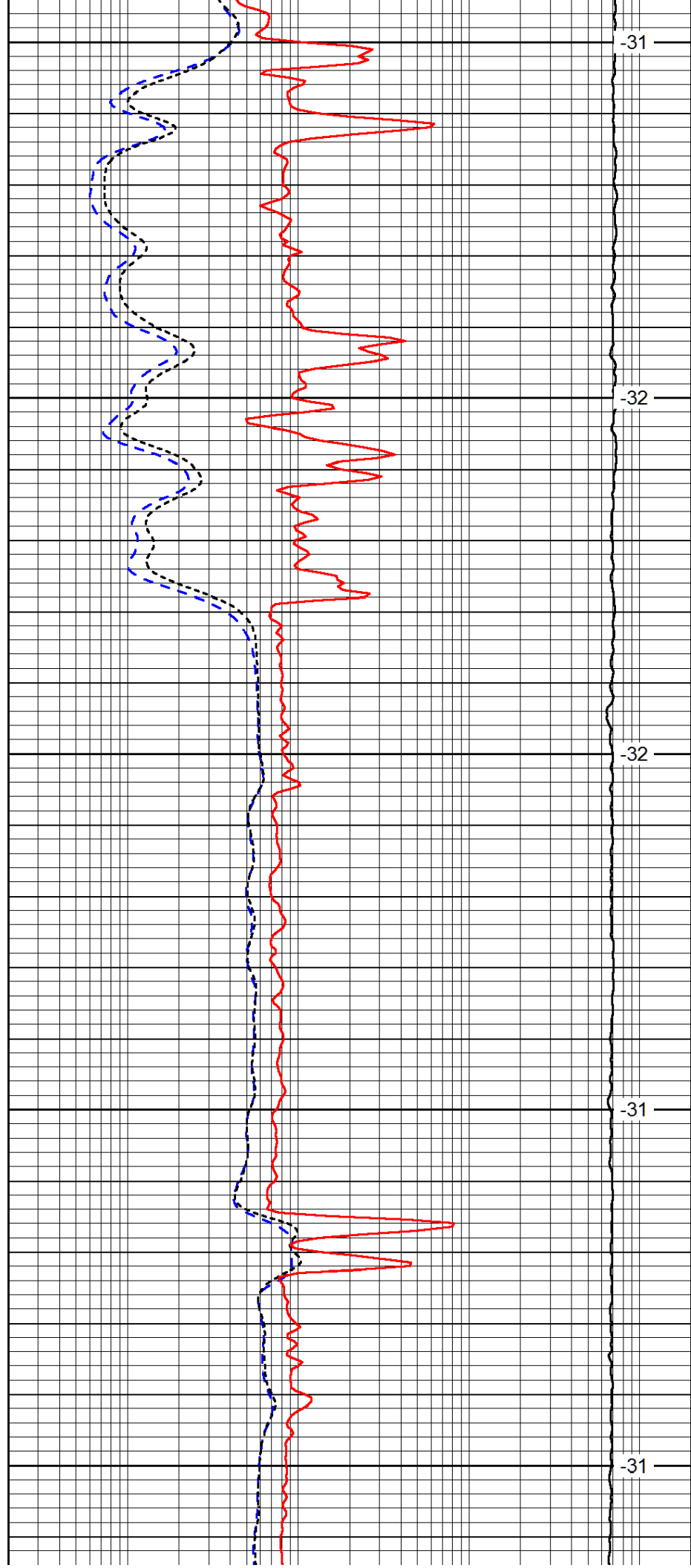
2300

2350

2400

2450

2500



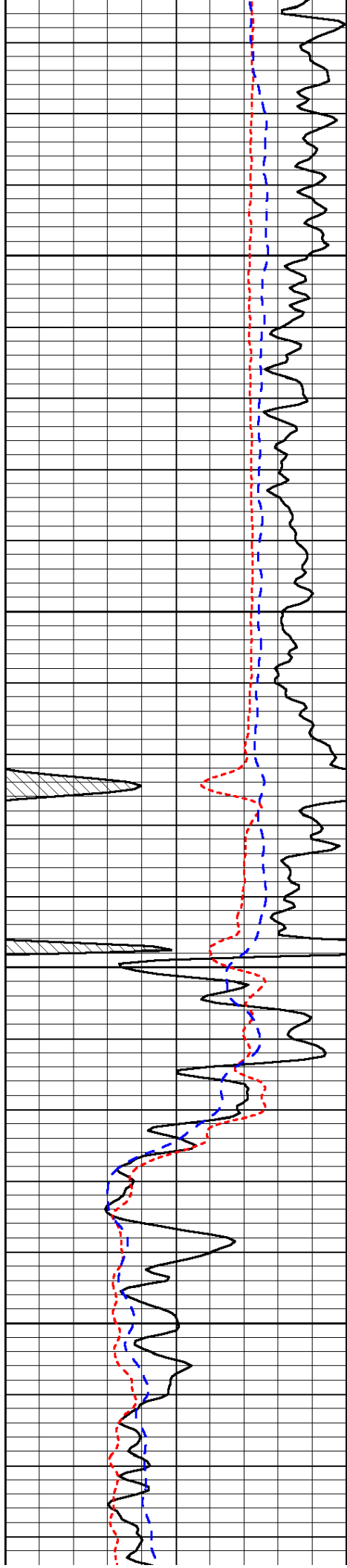
-31

-32

-32

-31

-31

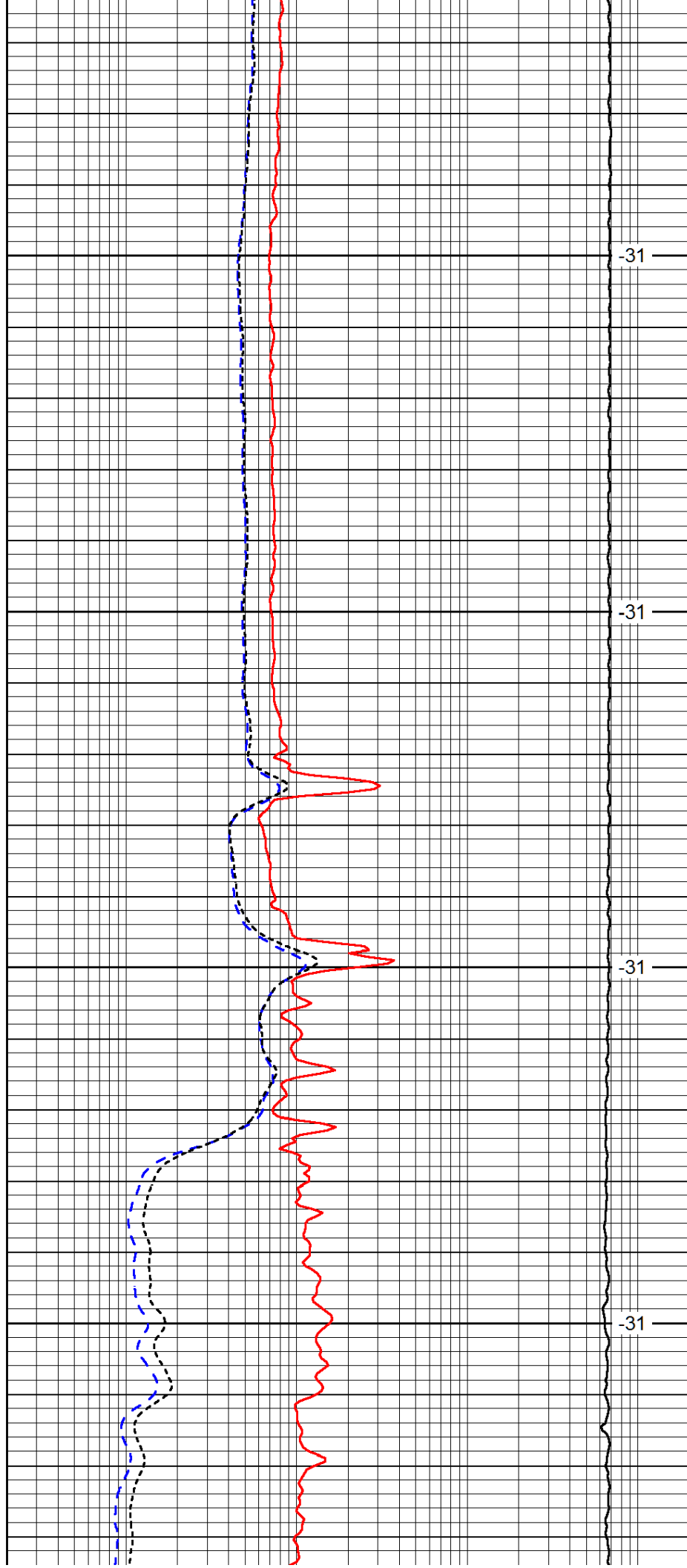


2550

2600

2650

2700

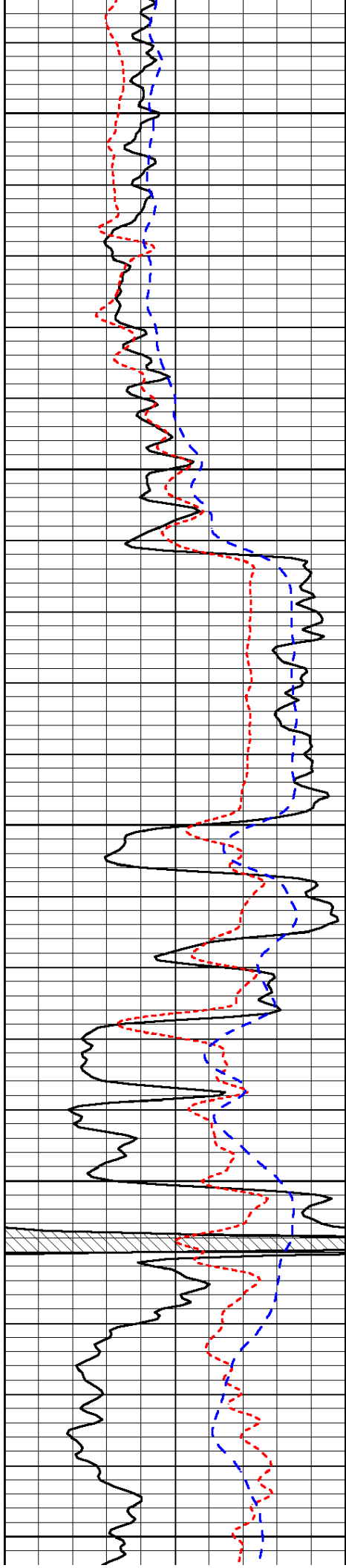


-31

-31

-31

-31



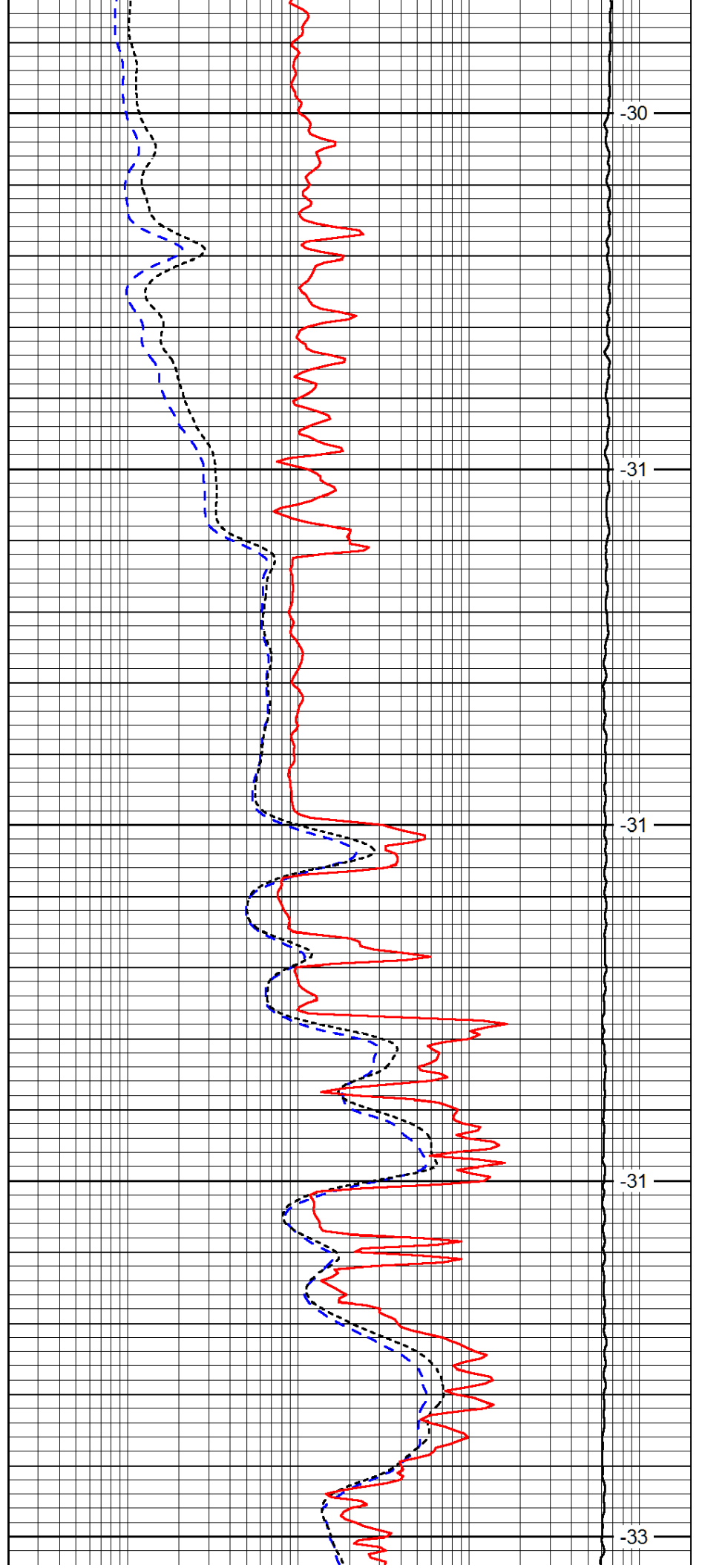
2750

2800

2850

2900

2950



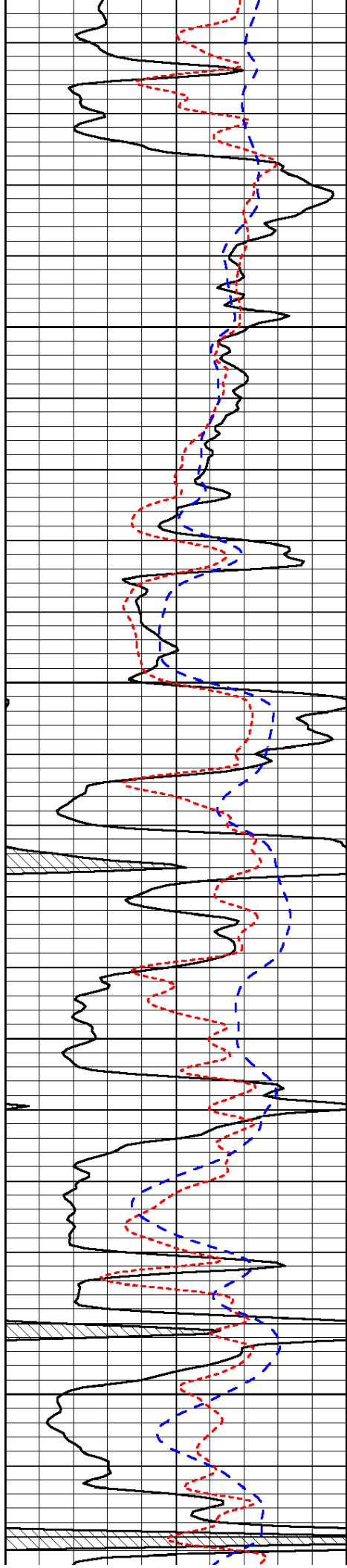
-30

-31

-31

-31

-33

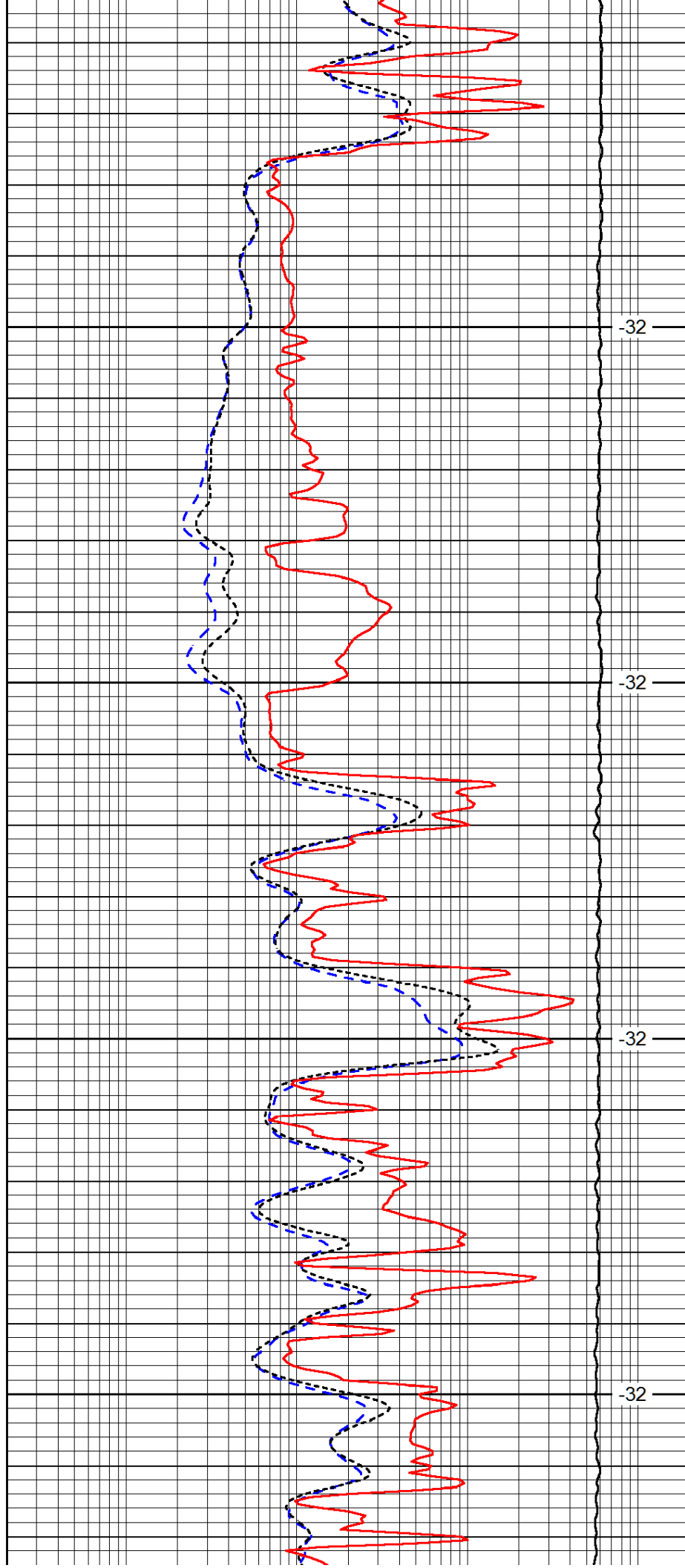


3000

3050

3100

3150

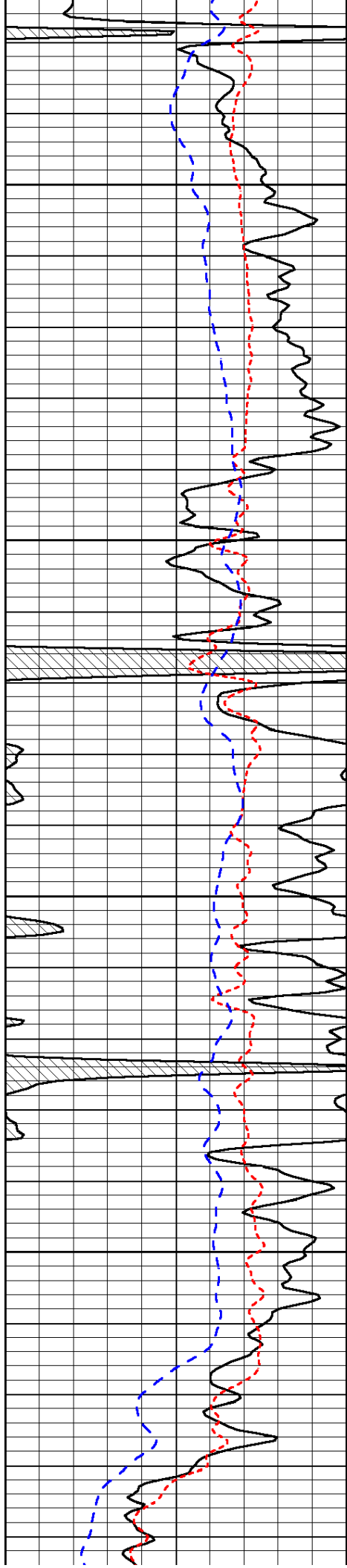


-32

-32

-32

-32

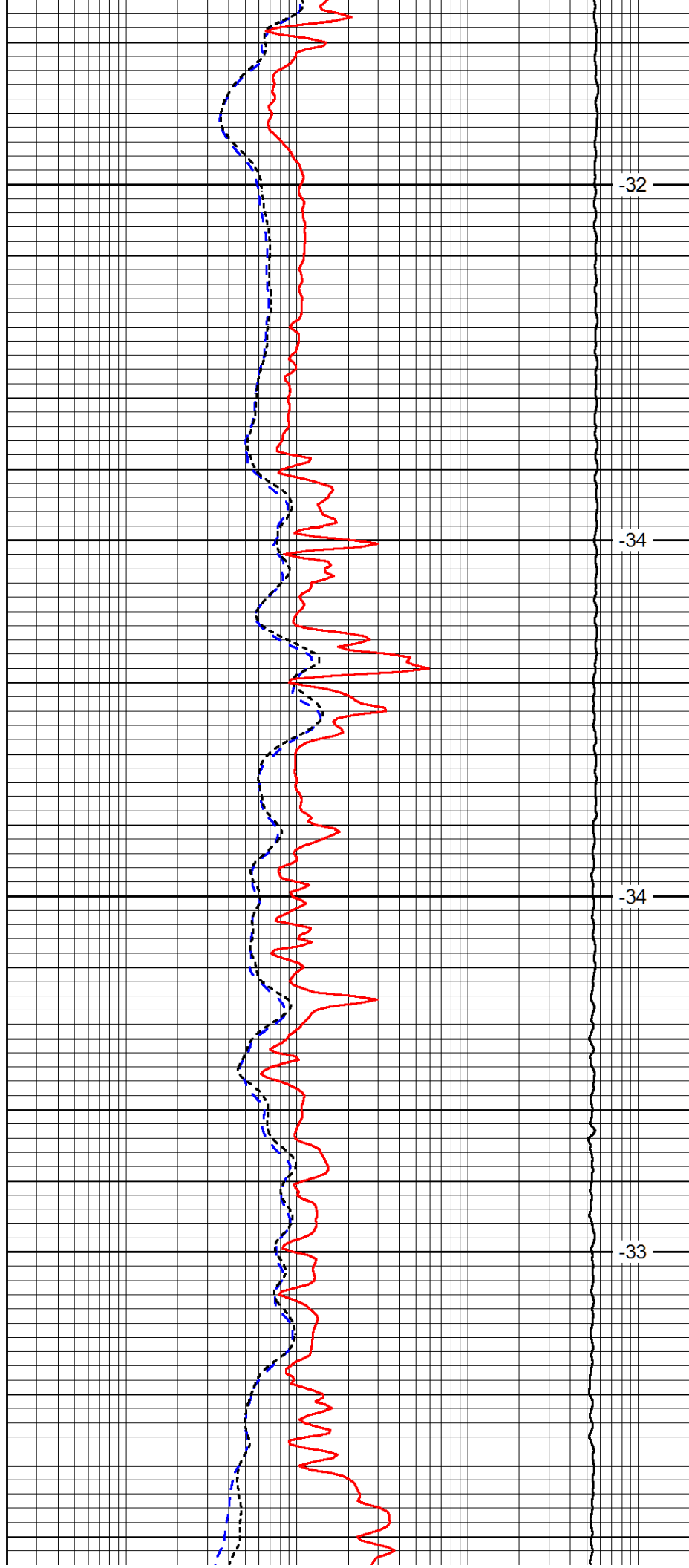


3200

3250

3300

3350

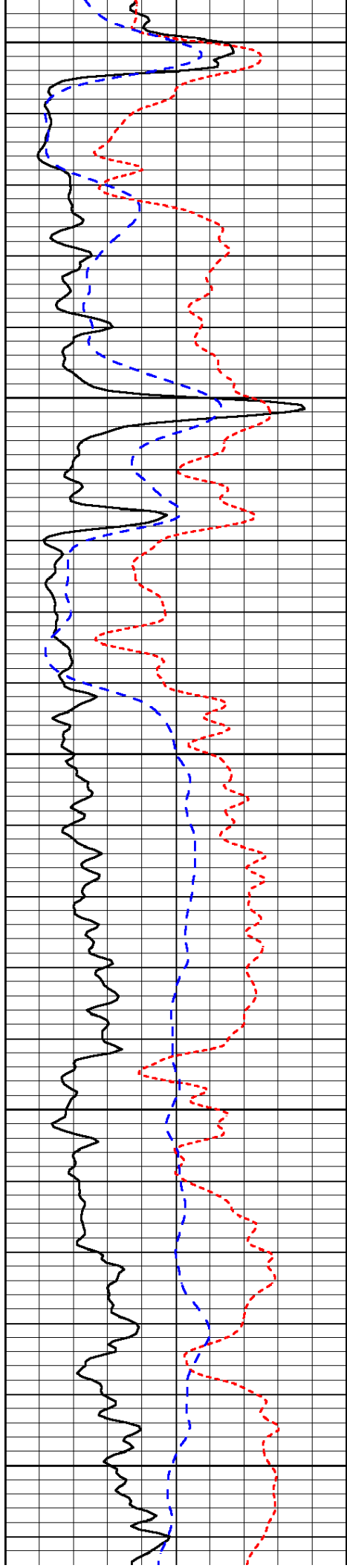


-32

-34

-34

-33



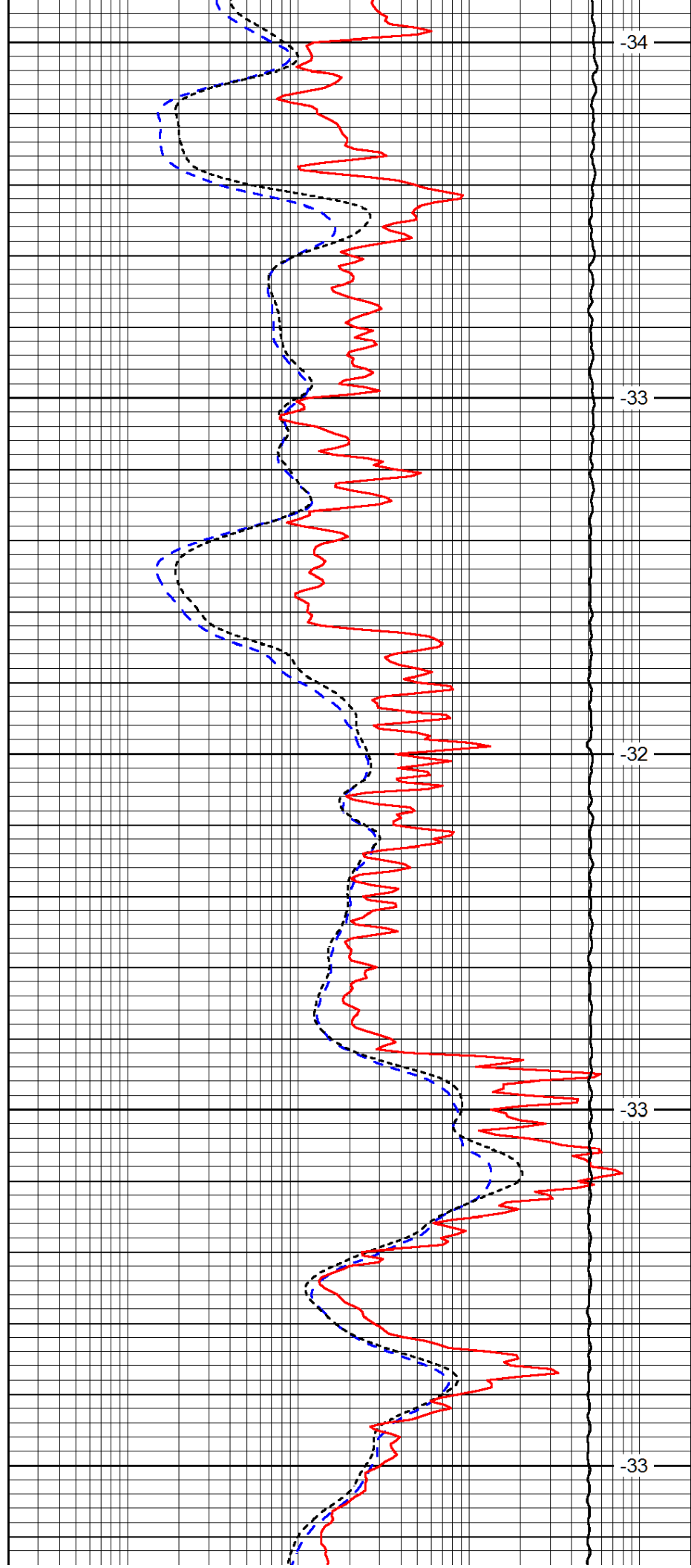
3400

3450

3500

3550

3600



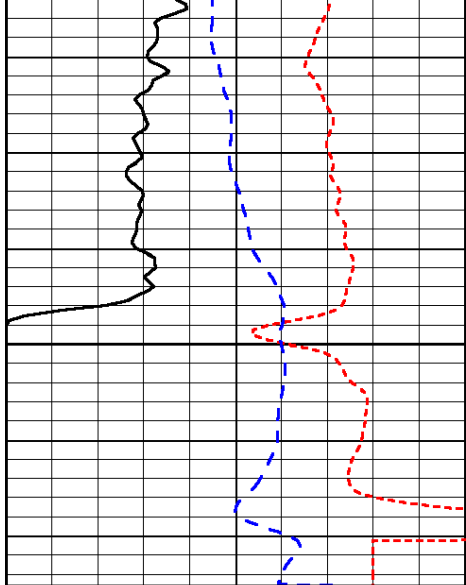
-34

-33

-32

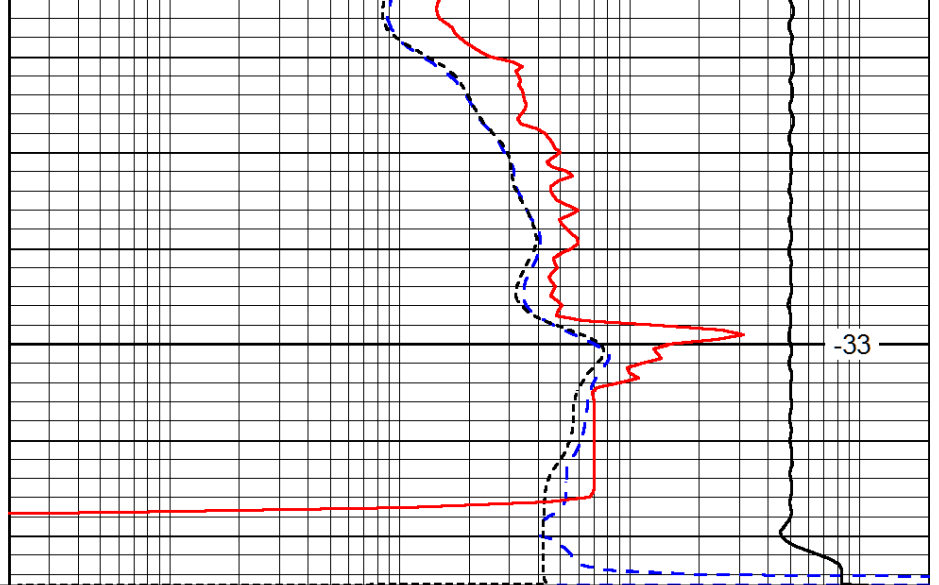
-33

-33



0	Gamma Ray	150
-160	RxoRt	40
-200	SP (mV)	0

3650



0.2	Deep Resistivity	2000
0.2	Medium Resistivity	2000
0.2	Shallow Resistivity	2000
10000	Line Tension	0

-33

LSPD