



Pioneer Energy Services

Dual Compensated Porosity Log

API No.	15-035-24626-00-00	
Company	AAS Oil, Inc.	
Well	Parks "A" #1	
Field	Gibson	
County	Cowley	
State	Kansas	
Location	NE NE 660' FNL / 660' FEL	
Sec: 29	Twp: 34S	Rge: 3E
Permanent Datum	Ground Level	Elevation 1138
Log Measured From	Kelly Bushing	8 Ft. Above Perm. Datum
Drilling Measured From	Kelly Bushing	
Date	12/5/2014	Elevation K.B. 1146 D.F. 1138 G.L. 1138

Run Number	One
Type Log	CNL / CDL
Depth Driller	3675
Depth Logger	3670
Bottom Logged Interval	3649
Top Logged Interval	2000
Type Fluid In Hole	Chemical
Salinity, PPM CL	1500
Density	8.9
Level	Full
Max. Rec. Temp. F	113
Operating Rig Time	4 Hours
Equipment -- Location	51 Hays
Recorded By	R. Barnhart
Witnessed By	Dan Johnson

Borehole Record		Casing Record					
Run No	Bit	From	To	Size	Wgt.	From	To
One	12.25	00	320	8.625	23#	00	320
Two	7.875	320	TD				

<<< Fold Here >>>

All interpretations are opinions based on inferences from electrical or other measurements and we cannot and do not guarantee the accuracy or correctness of any interpretation, and we shall not, except in the case of gross or willful negligence on our part, be liable or responsible for any loss, costs, damages, or expenses incurred or sustained by anyone resulting from any interpretation made by any of our officers, agents or employees. These interpretations are also subject to our general terms and conditions set out in our current Price Schedule.

Comments

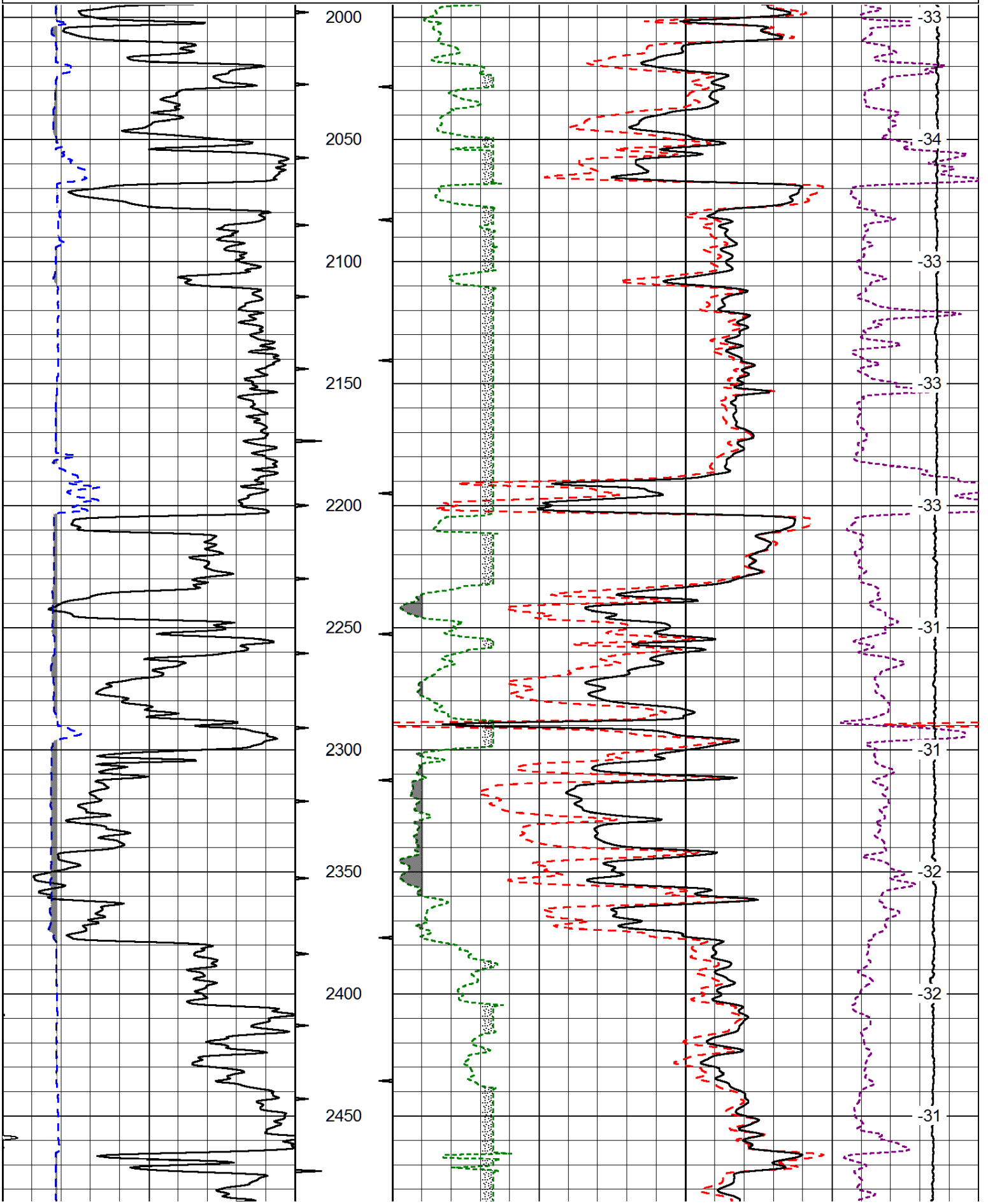
Thank you for using Log-Tech, Inc.
(785) 625-3858

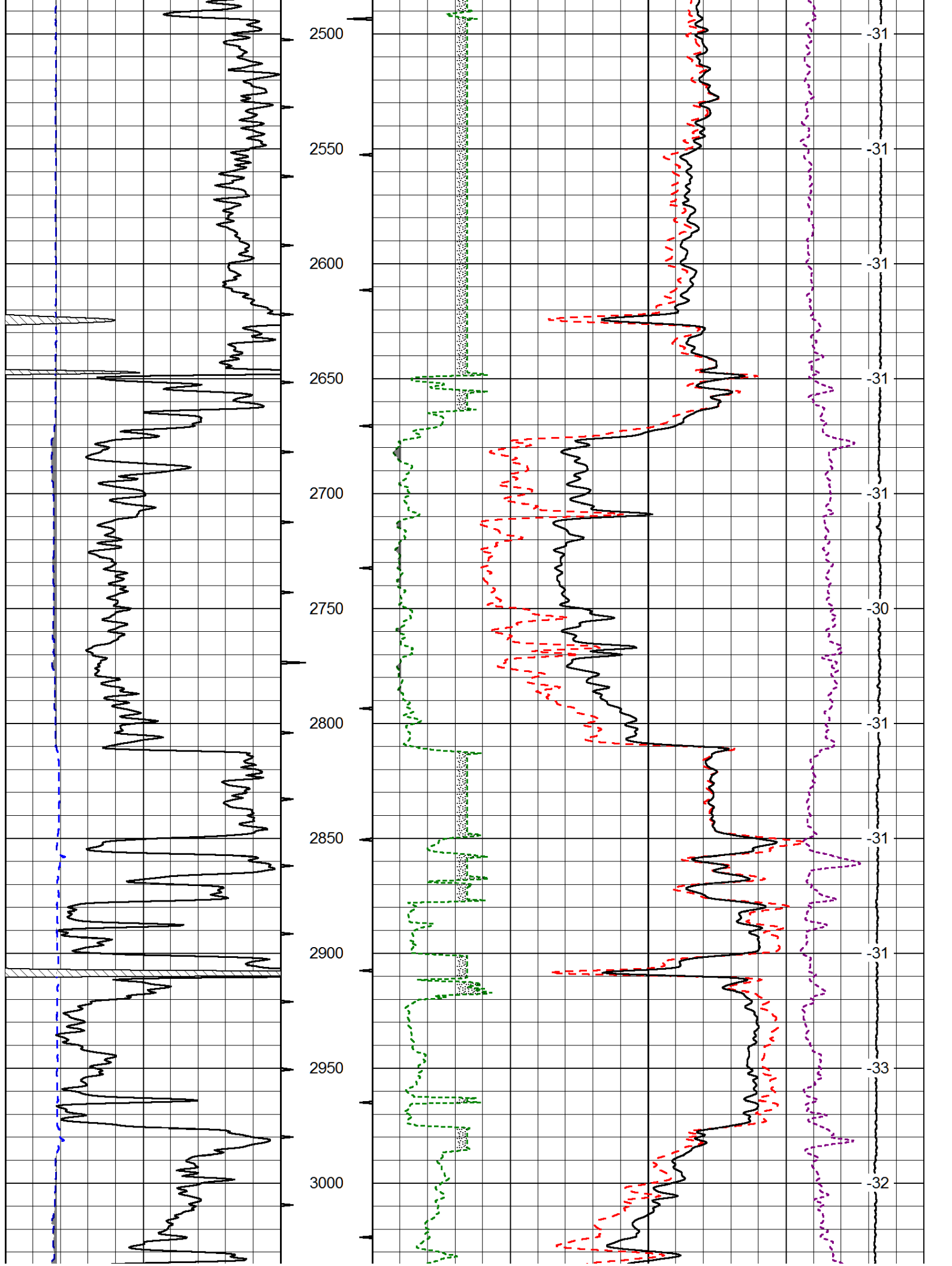
I-35S to S.Haven Exit: E to 21 Rd., (2E of Guda Springs Rd.)
1N, 1/4W, S into

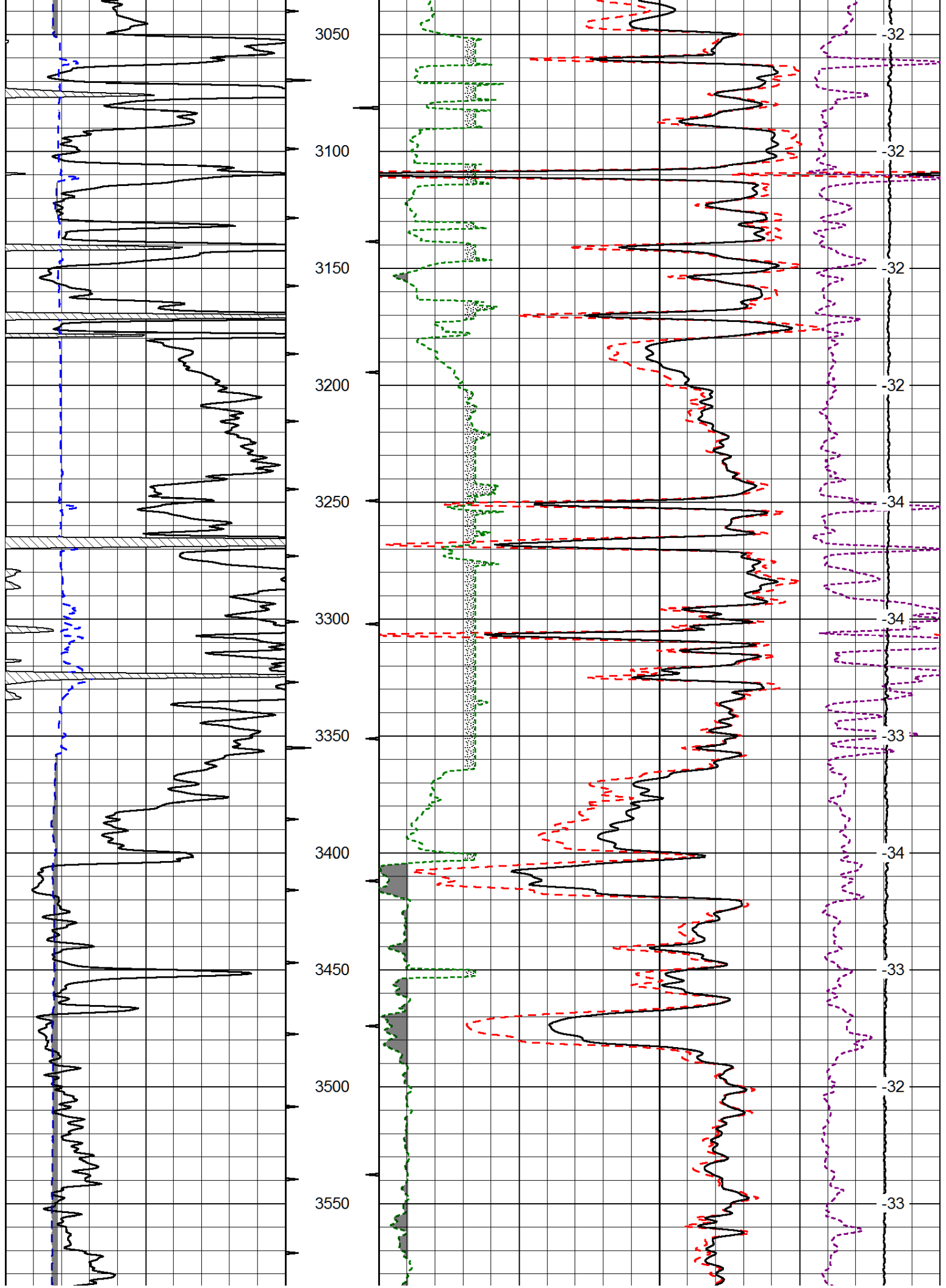
Database File: aas_hd.db
 Dataset Pathname: dil/aasmain
 Presentation Format: cdl
 Dataset Creation: Fri Dec 05 12:36:47 2014
 Charted by: Depth in Feet scaled 1:600

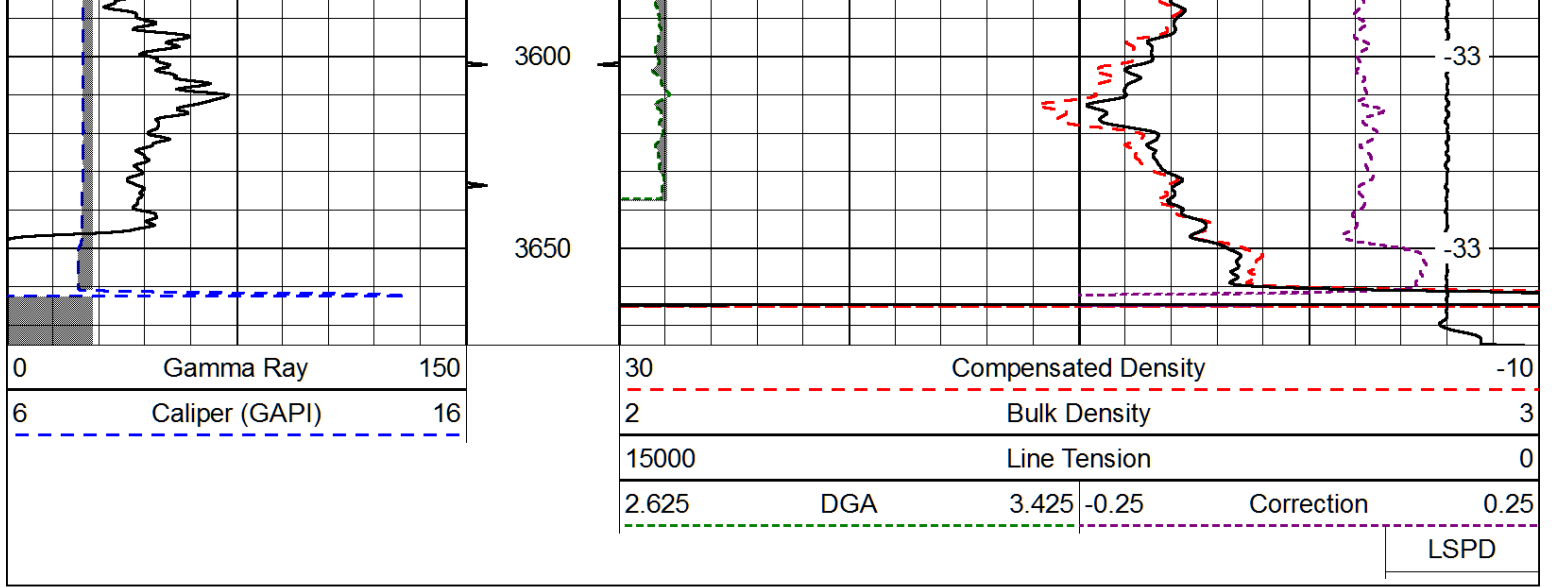
0	Gamma Ray	150
6	Caliper (GAPI)	16

30	Compensated Density		-10
2	Bulk Density		3
15000	Line Tension		0
2.625	DGA	3.425	-0.25
Correction			0.25
LSPD			









Database File: aas_hd.db
 Dataset Pathname: dil/aasmain
 Presentation Format: cndlspec
 Dataset Creation: Fri Dec 05 12:36:47 2014
 Charted by: Depth in Feet scaled 1:240

