



**GAMMA RAY
NEUTRON
COMPLETION LOG**

Company: RAYGARY OIL CO.
Well: WATSON #29
Field: WAYSIDE-HAVANA
County: MONTGOMERY STATE
KANSAS

Location: 17881 FSL & 37741 FEL
NW 3/4 NE SW
API #: 15-125-32392-00-00
Other Services

Permanent Datum: SEC 34 TWP 33S RGE 14E
Log Measured From: GL
Drilling Measured From: GL
Elevation: 891' EST
K.B. D.F. G.L. 891' EST

Date: 10-09-2013
Run Number: 1 NW
Depth Driller: 765
Depth Logger: 748.5

Top Log Interval: 0
Bottom Logged Interval: 748.5'
Fluid Level: FULL

Type Fluid: WATER
Production Casing: 4.5" @ TD @
Max. Recorded Temp.:
Estimated Cement Top:
Calculated Cement Top:
Amount & Type Cement:
Drilling Contractor:
Equipment Number: 105
Location: GORMLEY, R
Recorded By: SHEARHART, G
Witnessed By:

<<< Fold Here >>>

All interpretations are opinions based on inferences from electrical or other measurements and we cannot and do not guarantee the accuracy or correctness of any interpretation, and we shall not, except in the case of gross or willful negligence on our part, be liable or responsible for any loss, costs, damages, or expenses incurred or sustained by anyone resulting from any interpretation made by any of our officers, agents or employees. These interpretations are also subject to our general terms and conditions set out in our current Price Schedule.

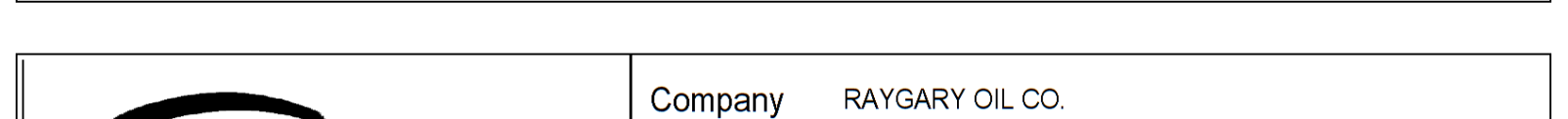
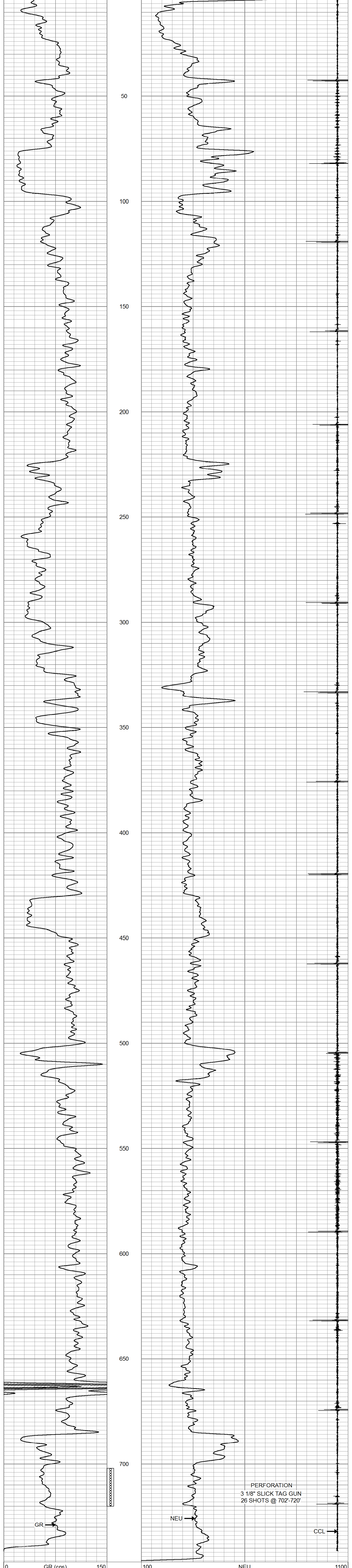
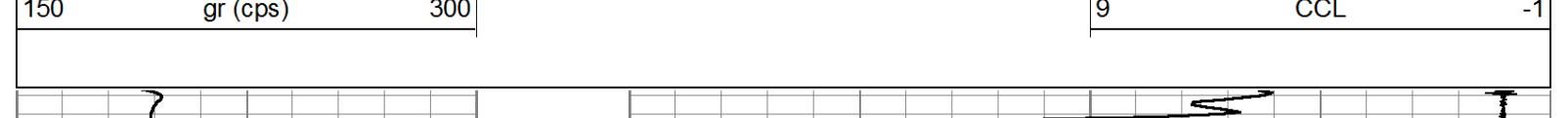
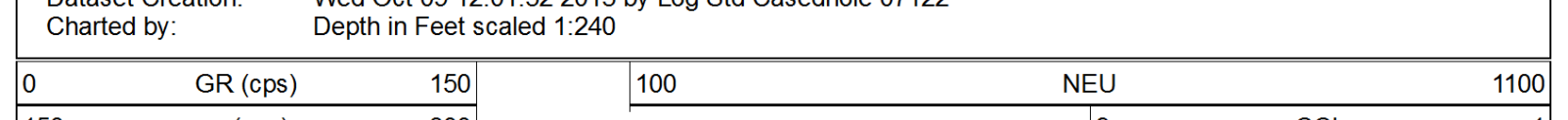
Comments

THANK YOU

Sensor	Offset (ft)	Schematic	Description	Len (ft)	OD (in)	Wt (lb)
GR	7.17		GR-TITAN_169 (1.69TTGRN) Titan 1 11/16" Gamma Ray	3.82	1.69	17.99
CCL	5.05		CCL-TITAN_169 (TIT169) Titan 1 11/16" Logging CCL	1.83	1.69	7.50
NEU	0.63		NEU-TITAN_169 (TIT169_001) Titan 1 11/16" Neutron	4.33	1.69	20.00

Dataset: watson #29.db: field/well/run1/pass1
Total Length: 9.99 ft
Total Weight: 45.49 lb
O.D.: 1.69 in

Database File: f:\watson #29.db
Dataset Pathname: pass1
Presentation Format: gr-n-ccl
Dataset Creation: Wed Oct 09 12:01:32 2013 by Log Std Casedhole 07122
Charted by: Depth in Feet scaled 1:240



Company: RAYGARY OIL CO.
Well: WATSON #29
Field: WAYSIDE-HAVANA
County: MONTGOMERY SECTION 34, TWP. 33S, RGE. 14E
State: KANSAS
Date: 10-09-2013

