



**MIDWEST SURVEYS**  
 LOGGING - PERFORATING - CONSULTING SERVICES  
 P.O. Box 88, Osawatomie, KS 66064  
 913 / 735 - 2128

**GAMMA RAY / NEUTRON / CCL**

File No.

Company **Altavista Energy, Inc.**

Well **Baldwin Unit No. A1-25**

Field **Baldwin**

County **Douglas** State **Kansas**

Location **1324 FSL & 4784 FEL  
NE-NW-SW-SW**

Other Services  
Perforate

Sec. 1  
Permament Datum **Typ. 15s** Rgs. **20e** Elevation **1078'**  
 Log Measured From **GL** K.B. NA  
 Drilling Measured From **GL** D.F. NA  
 G.L. **1078'**

Date **11-20-2013**

Run Number **One**

Depth Logger **990.0**

Bottom Logged Interval **910.5**

Top Log Interval **20.0**

Fluid Level **Full**

Type Fluid **Water**

Density / Viscosity **NA**

Salinity - PPM Cl **NA**

Max. Recorded Temp **NA**

Estimated Cement Top **0.0**

Equipment No. **107** Location **Oswatomie**

Recorded By **Steve Wandisch**

Witnessed By **Doug Evans**

BORE-HOLE RECORD		CASING RECORD		TO
No.	BIT	FROM	TO	TO
One	9.875"	64.0	7.00"	64.0
Two	5.525"	64.0	2.875"	946.70
			Set	915.05

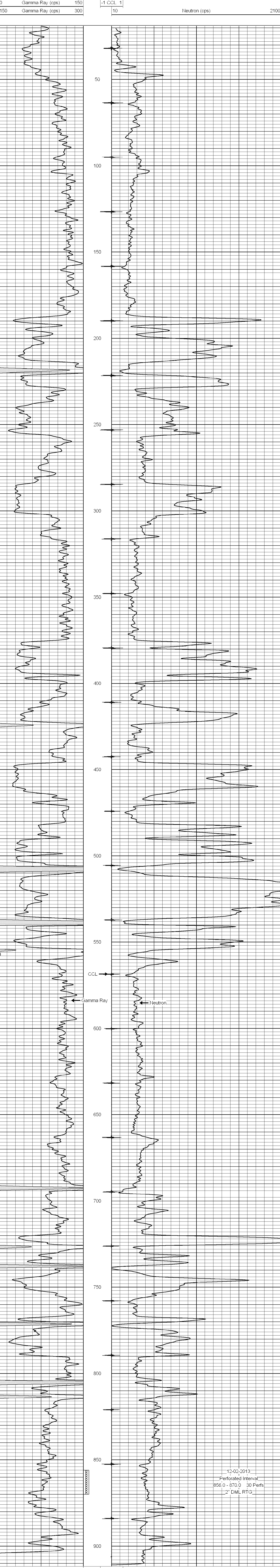
<<< Fold Here >>>

All interpretations are opinions based on inferences from electrical or other measurements and we cannot and do not guarantee the accuracy or correctness of any interpretation, and we shall not, except in the case of gross or willful negligence on our part, be liable or responsible for any loss, costs, damages, or expenses incurred or sustained by anyone resulting from any interpretation made by any of our officers, agents or employees. These interpretations are also subject to our general terms and conditions set out in our current Price Schedule.

Comments

Drilling Contractor :  
Town Oilfield Services, Inc

Database File: baldvunit25ai.db  
 Dataset Pathname: pass1  
 Presentation Format: gr-n-ccl  
 Dataset Creation: Wed Nov 20 14:07:41 2013 by Log SCH 111116  
 Charted by: Depth in Feet scaled 1:240



12-02-2013  
 Perforated Interval  
 856.0 - 870.0 30 Perfs  
 2" DML RTG