



Pioneer Energy Services

# Dual Induction Log

15-007-24,015-00-00

API No.

Company **Woolsey Operating Company, LLC**  
 Well **Forester E No.2**  
 Field **Roundup South**  
 County **Barber** State **Kansas**

Location **NE SW SW SW  
530' FSL & 405' FWL**

Sec: **34** Twp: **33S** Rge: **11W**

Permanent Datum **Ground Level** Elevation **1350**  
 Log Measured From **Kelly Bushing** 12 Ft. Above Perm. Datum  
 Drilling Measured From **Kelly Bushing**

Other Services  
 CNL/CDL  
 Elevation  
 K.B. 1362  
 D.F. 1350  
 G.L. 1350

Date	5/5/2013	
Run Number	One	
Depth Driller	5070	
Depth Logger	5070	
Bottom Logged Interval	5069	
Top Log Interval	300	
Casing Driller	13.375 @ 306	
Casing Logger	306	
Bit Size	7.875	
Type Fluid in Hole	Chemical	
Salinity, ppm CL	3,000	
Density / Viscosity	9.2   55	
pH / Fluid Loss	9.5   9.6	
Source of Sample	Flowline	
Rm @ Meas. Temp	.9 @ 72	
Rmf @ Meas. Temp	.68 @ 72	
Rmc @ Meas. Temp	1.22 @ 72	
Source of Rmf / Rmc	Charts	
Rm @ BHT	.51 @ 127	
Operating Rig Time	3 Hours	
Max Rec. Temp. F	127	
Equipment Number	17	
Location	Hays	
Recorded By	C. Desai	
Witnessed By	Scott Alberg	

<<< Fold Here >>>

All interpretations are opinions based on inferences from electrical or other measurements and we cannot and do not guarantee the accuracy or correctness of any interpretation, and we shall not, except in the case of gross or willful negligence on our part, be liable or responsible for any loss, costs, damages, or expenses incurred or sustained by anyone resulting from any interpretation made by any of our officers, agents or employees. These interpretations are also subject to our general terms and conditions set out in our current Price Schedule.

### Comments

Thank you for using Pioneer Energy Services  
[www.pioneerenergy.com](http://www.pioneerenergy.com)  
 785 625 3858

Medicine Lodge KS, S to Gerlane Rd,  
 6 E, W Into 1 mile

Database File: c:\warrior\data\woolsey\_forester e #2\woolhd.db  
 Dataset Pathname: dil\woolstk  
 Presentation Format: dil2in  
 Dataset Creation: Sun May 05 20:16:15 2013  
 Charted by: Depth in Feet scaled 1:600

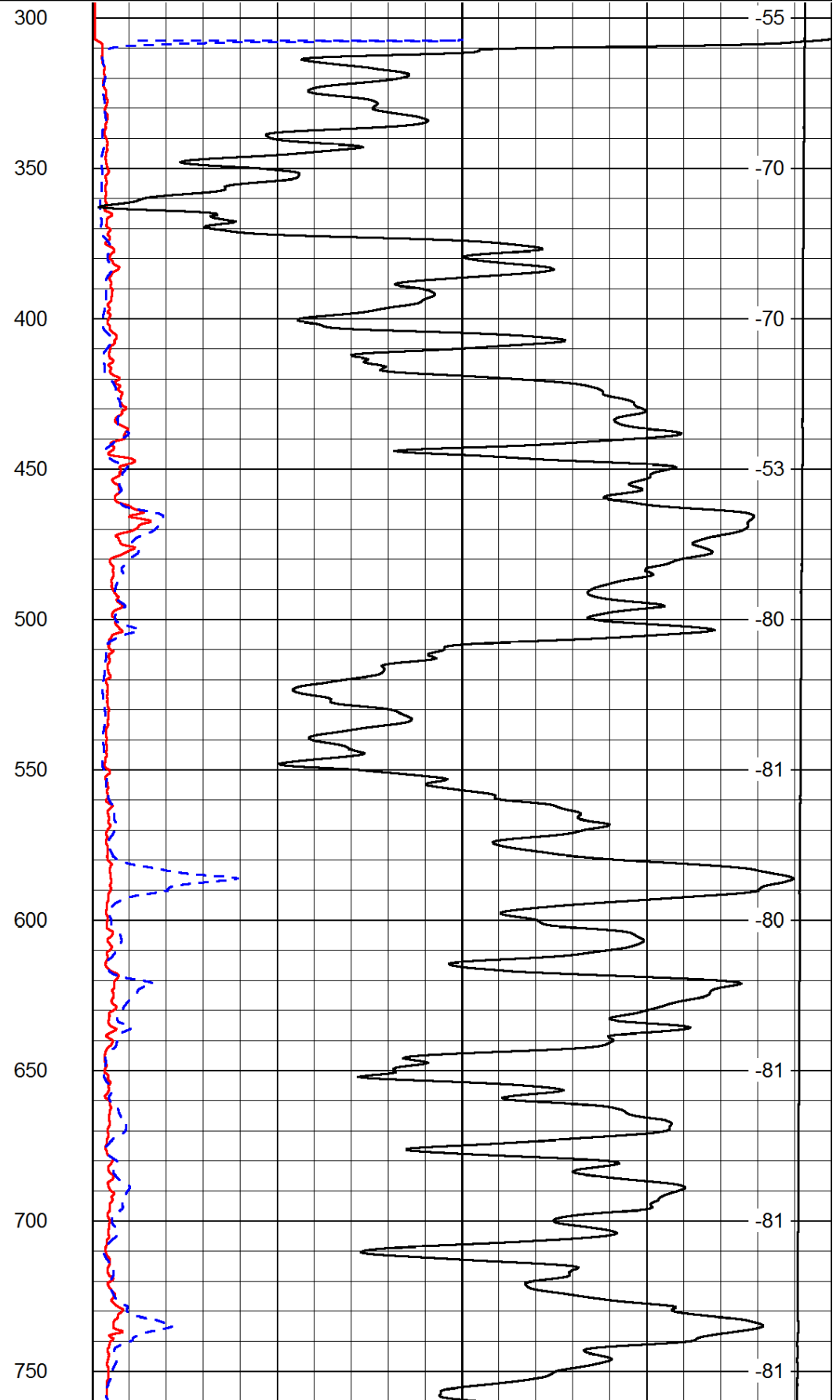
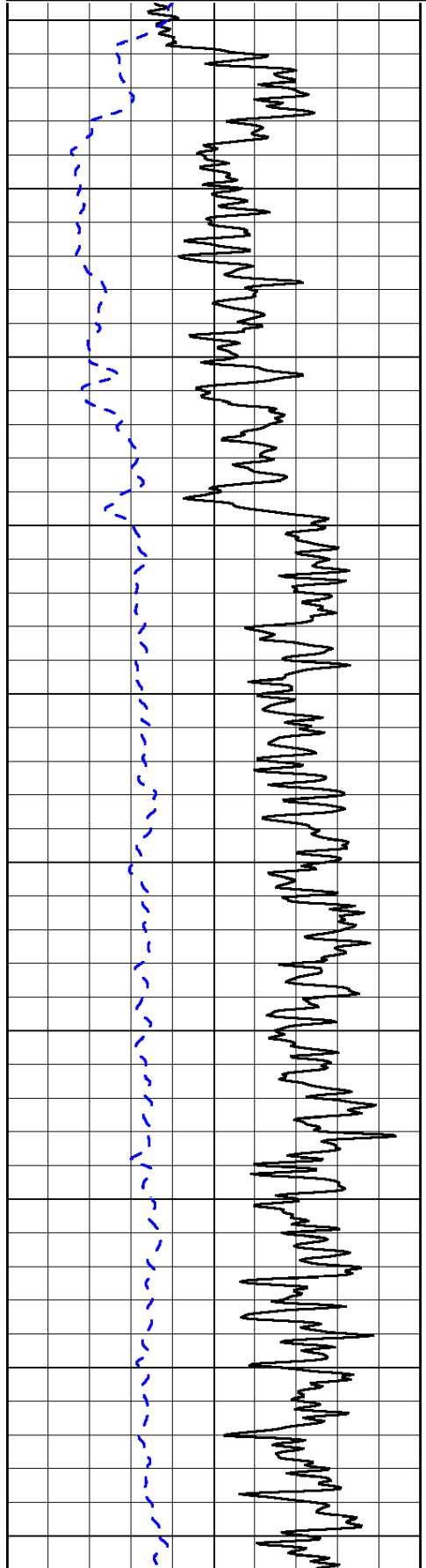
0	Gamma Ray	150
-200	SP (mV)	0

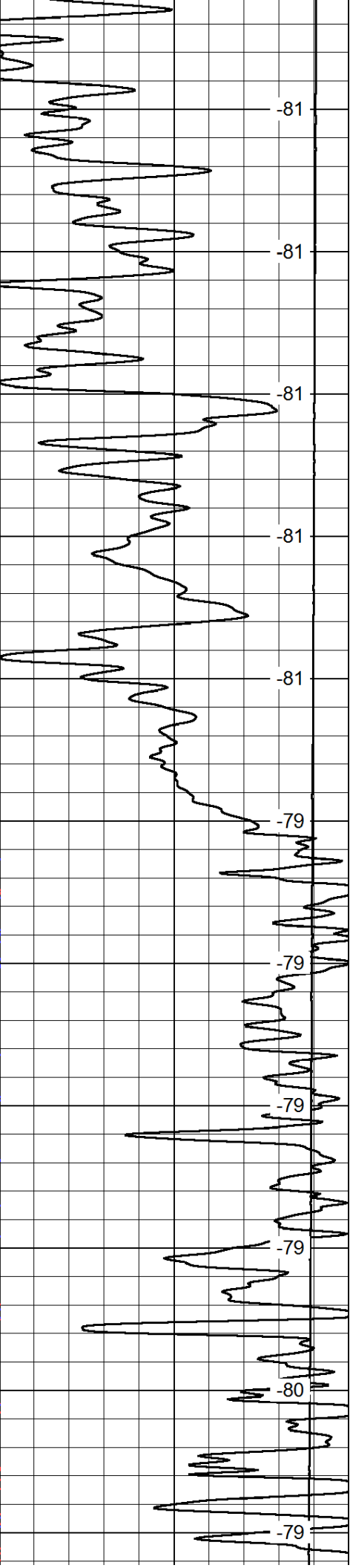
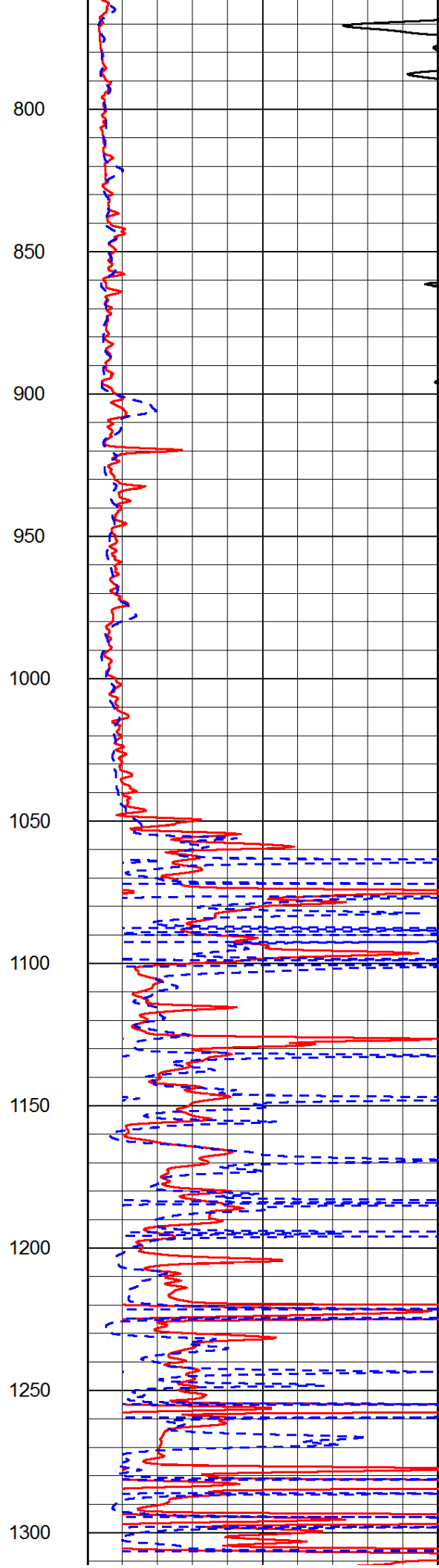
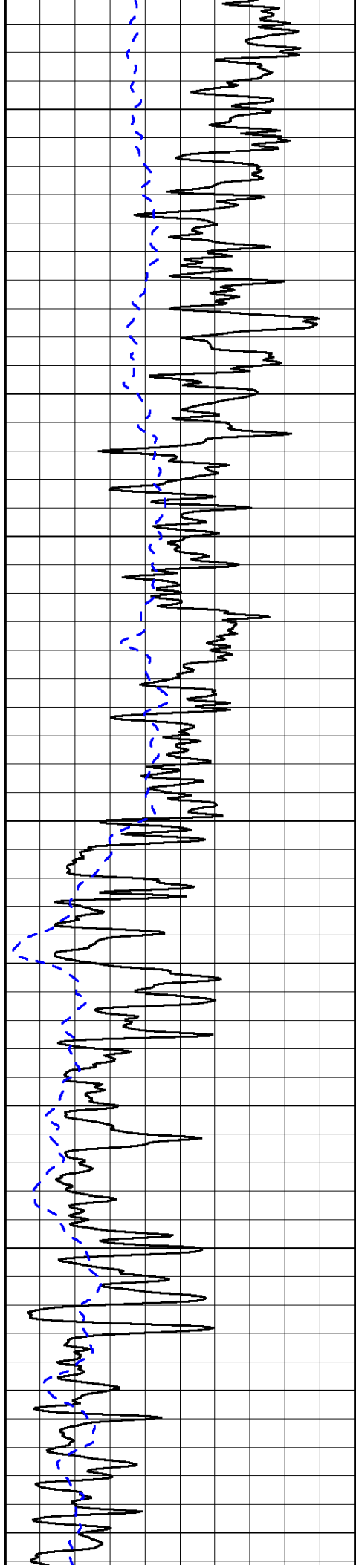
0	Shallow Resistivity	50
0	Deep Resistivity	50

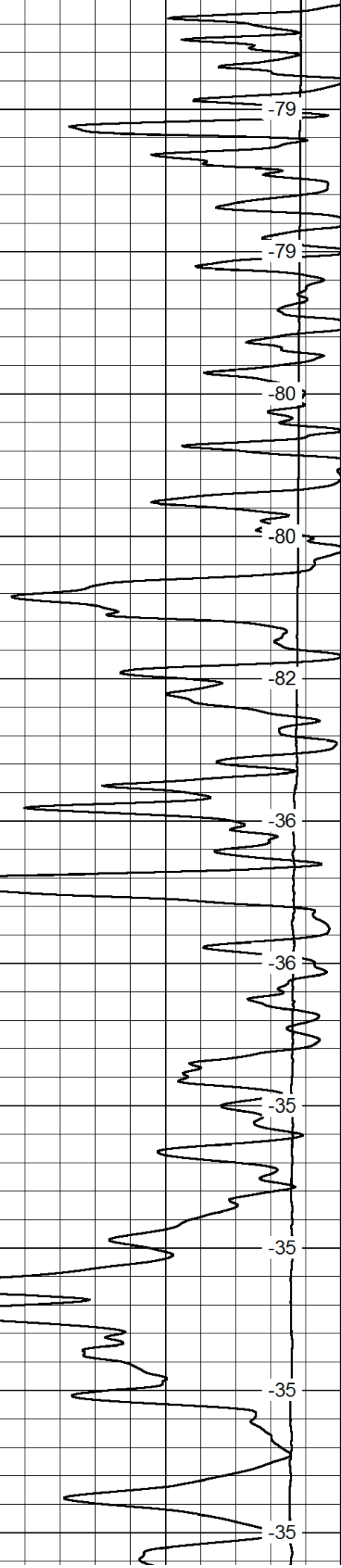
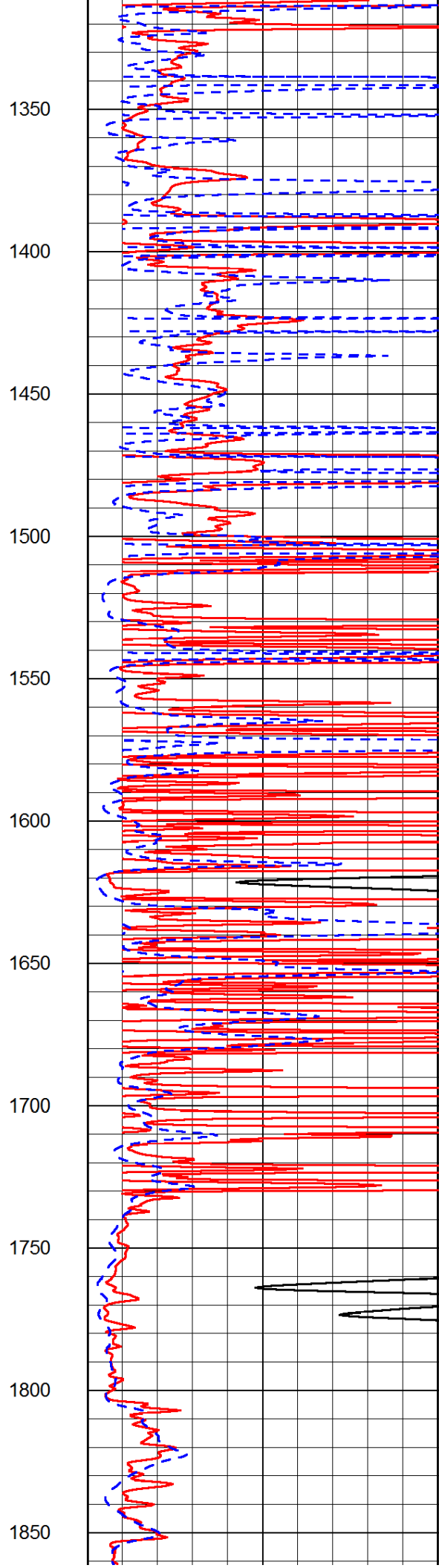
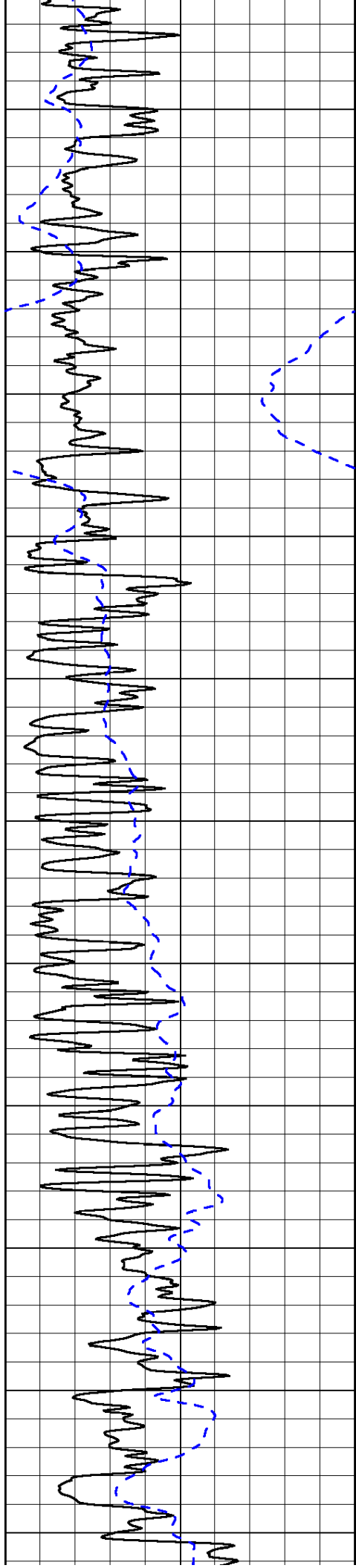
LSPD

1000	Conductivity	0
15000	Line Tension	0

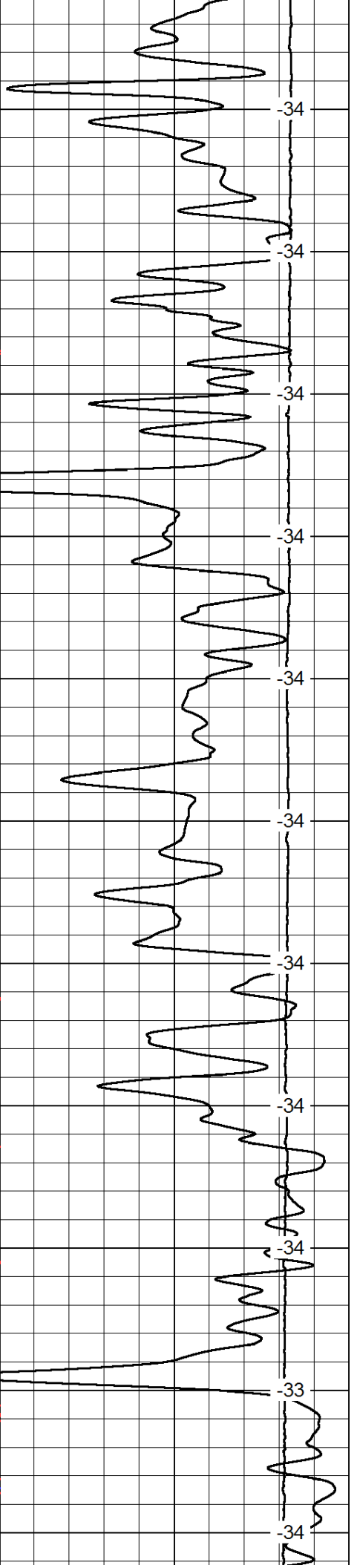
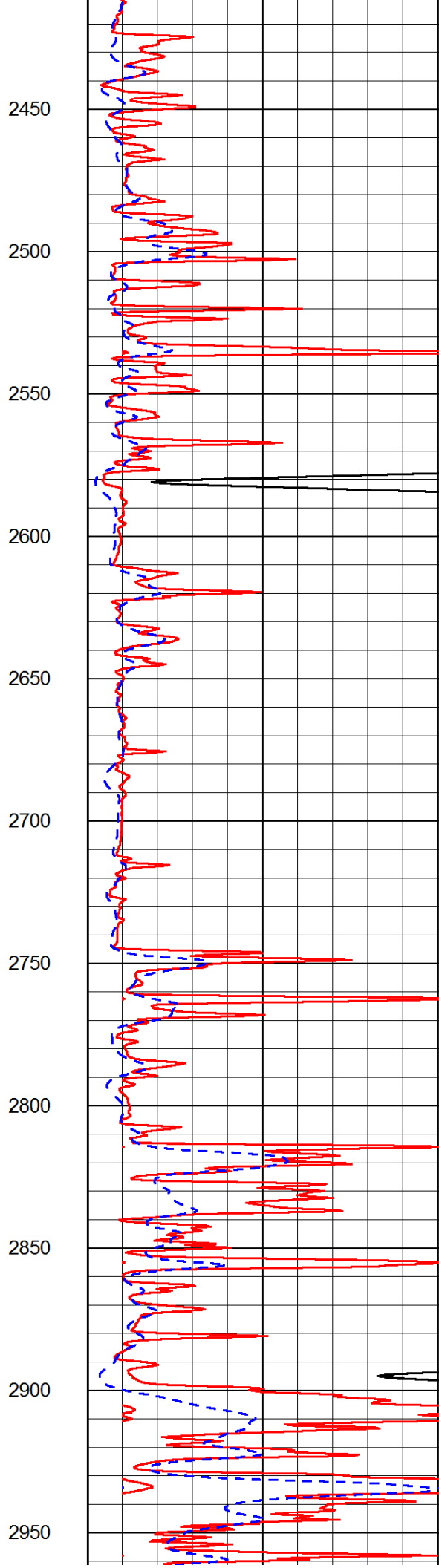
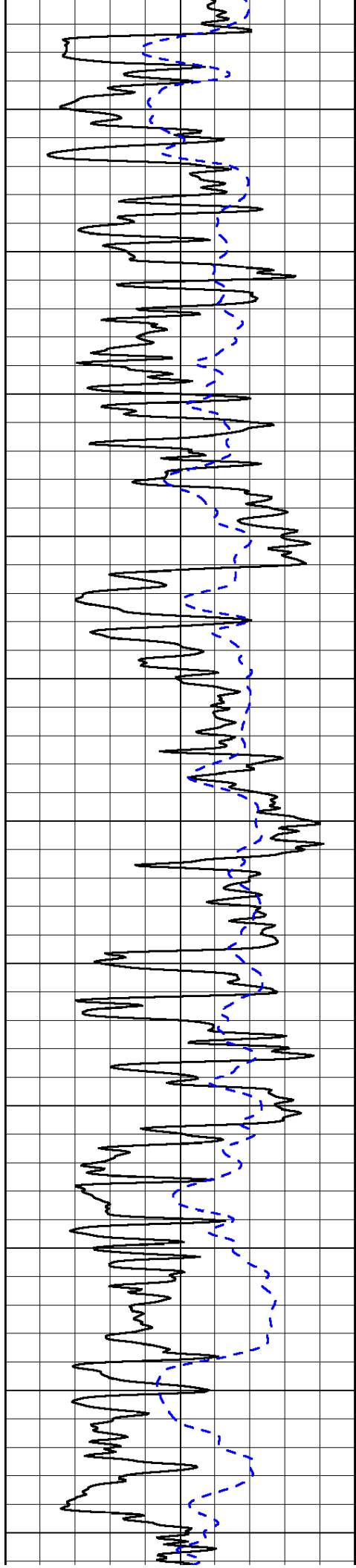
50	Shallow Resistivity	500
50	Deep Resistivity	500

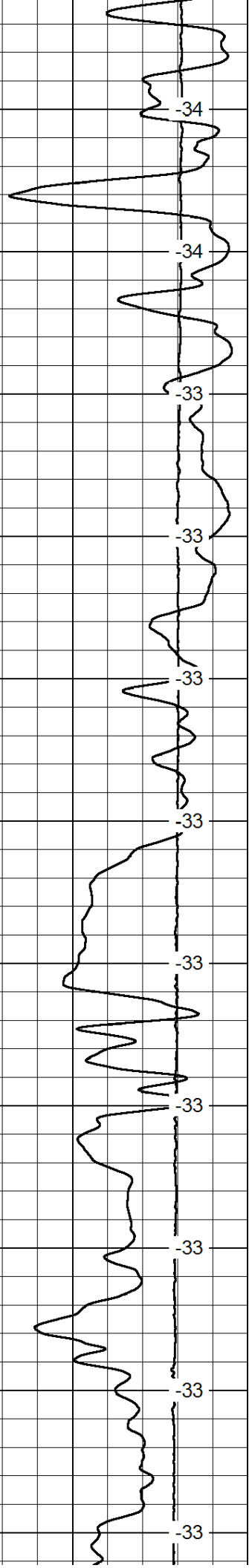
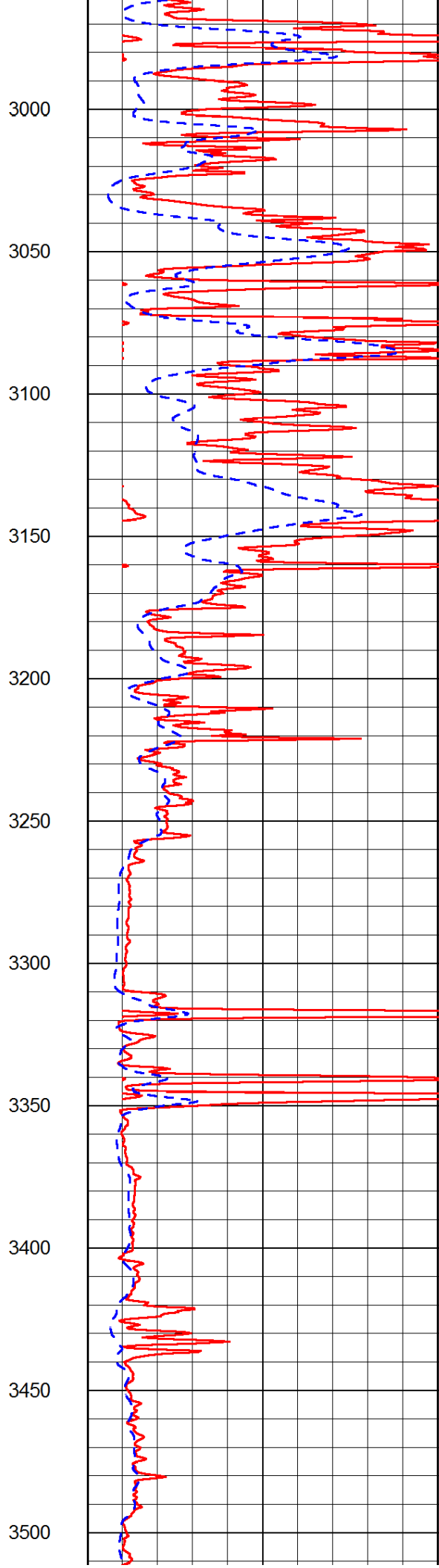
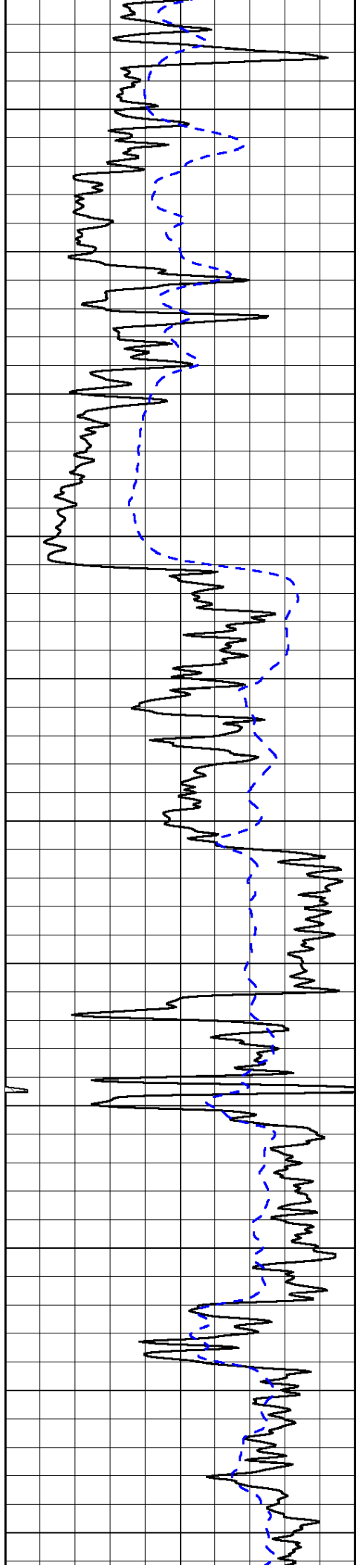




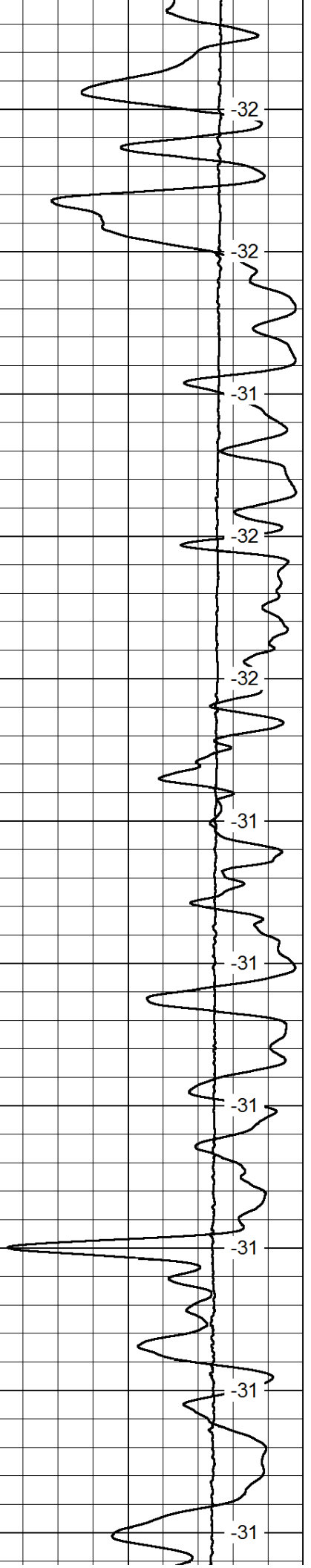
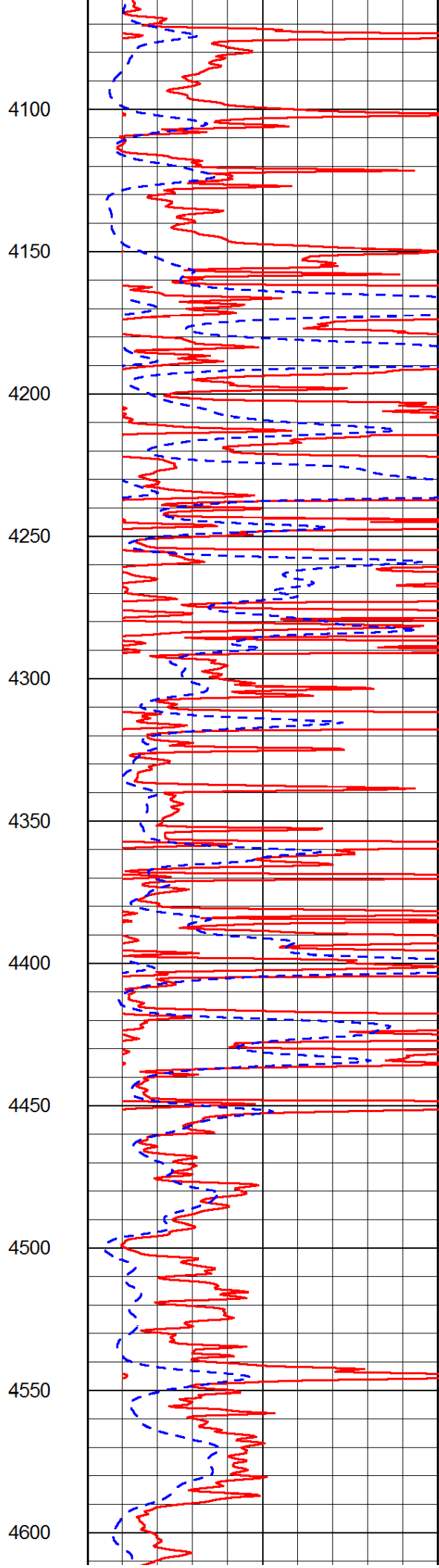
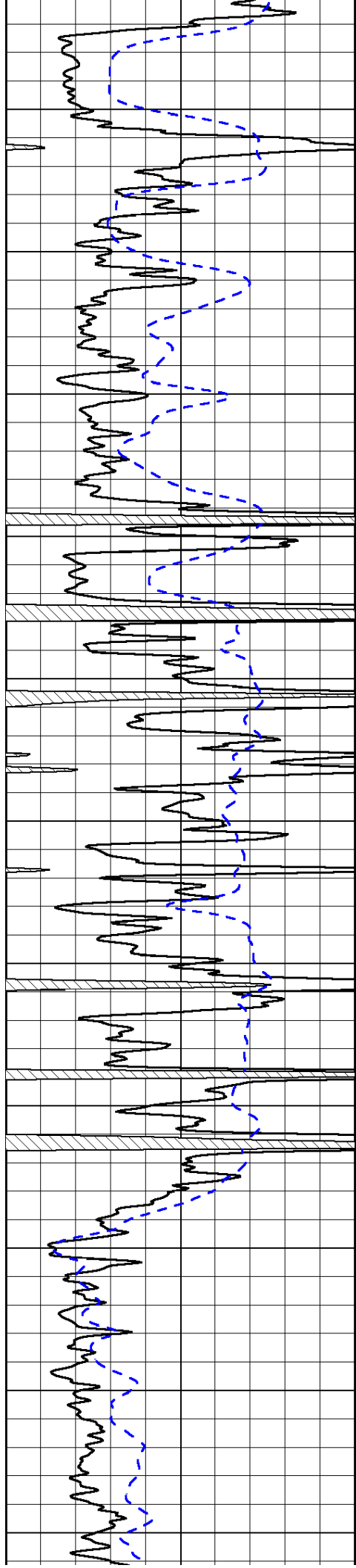


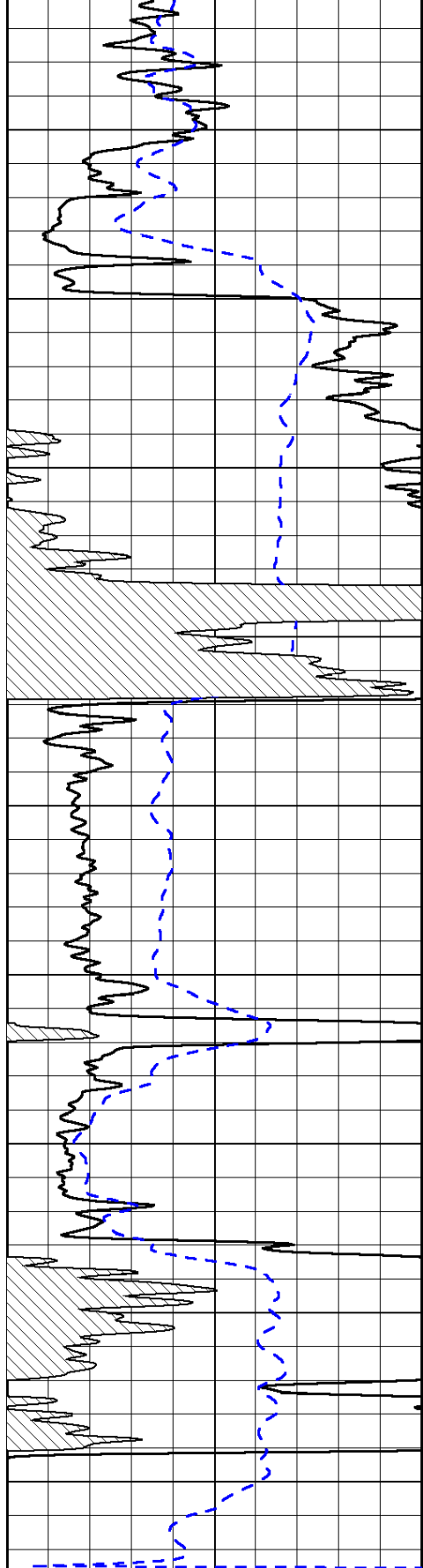




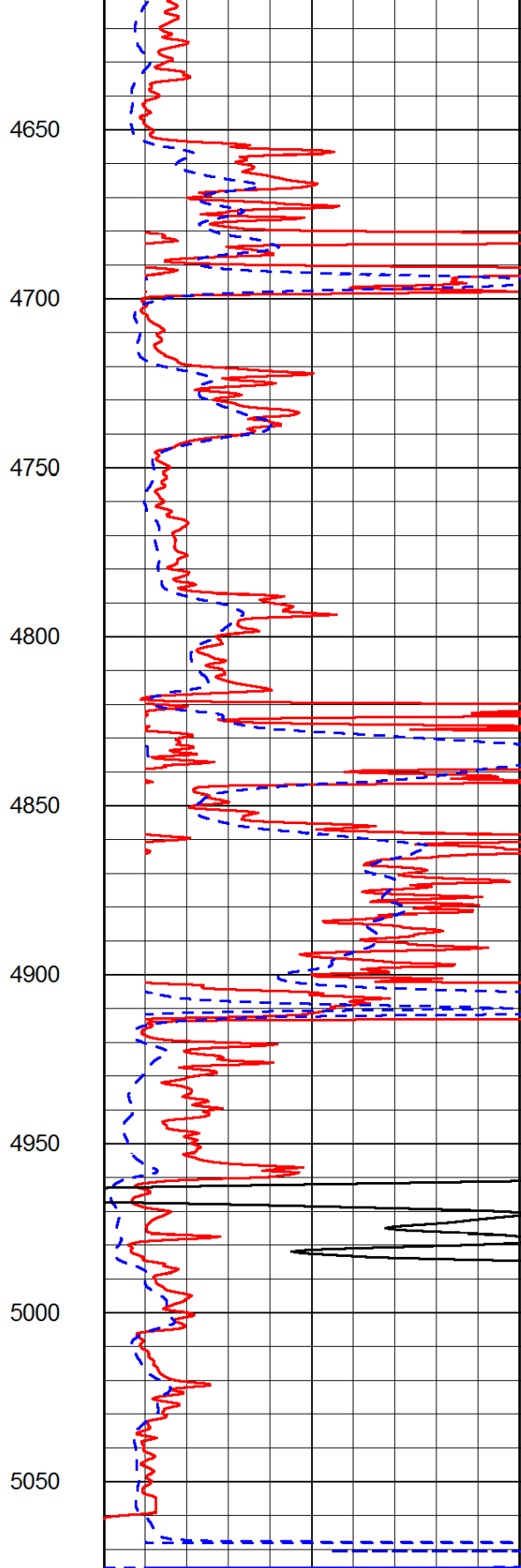






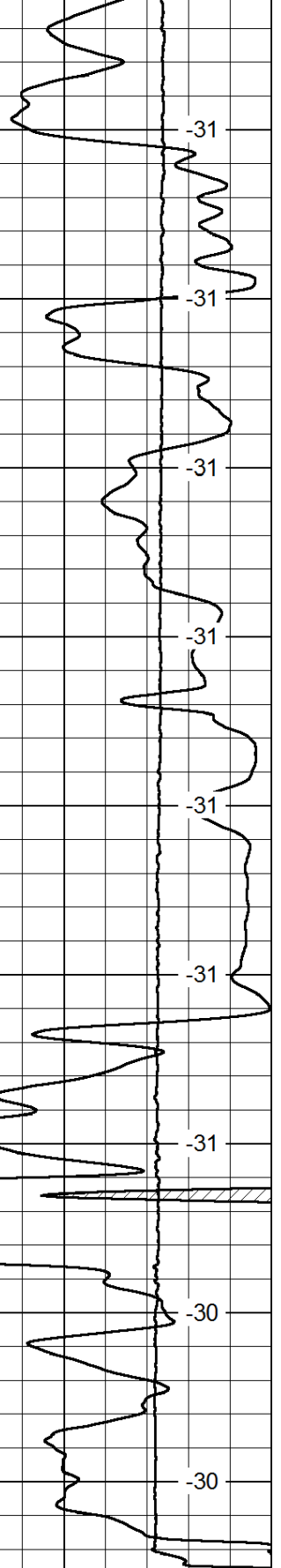


0      Gamma Ray      150  
 -200      SP (mV)      0



0      Shallow Resistivity      50  
 0      Deep Resistivity      50  
 1000      Conductivity      0  
 15000      Line Tension      0

50      Shallow Resistivity      500  
 50      Deep Resistivity      500



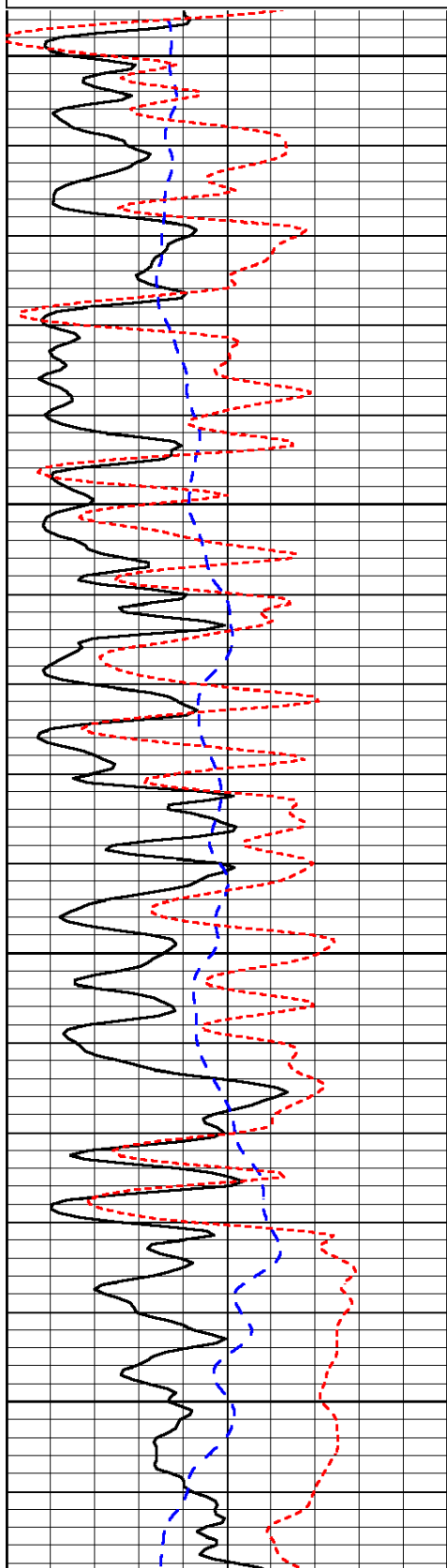
-31  
 -31  
 -31  
 -31  
 -31  
 -31  
 -31  
 -30  
 -30

Database File: c:\warrior\data\woolsey\_forester e #2\woolhd.db  
 Dataset Pathname: dil/woolstk  
 Presentation Format: dil  
 Dataset Creation: Sun May 05 20:16:15 2013  
 Charted by: Depth in Feet scaled 1:240

0	Gamma Ray	150
-200	SP (mV)	0
-160	RxoRt	40

0.2	Deep Resistivity	2000
0.2	Medium Resistivity	2000
0.2	Shallow Resistivity	2000
15000	Line Tension	0

LSPD

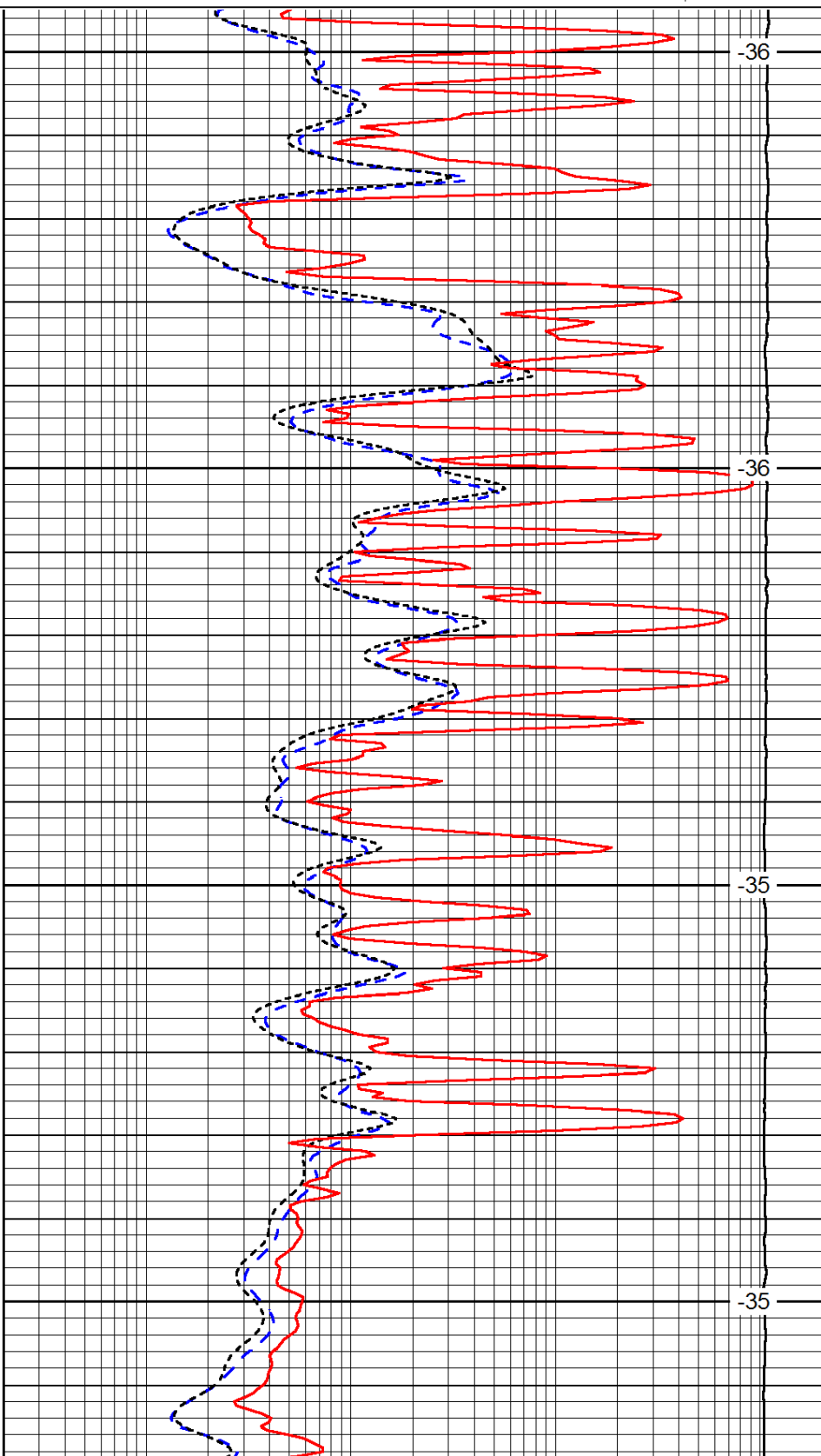


1600

1650

1700

1750

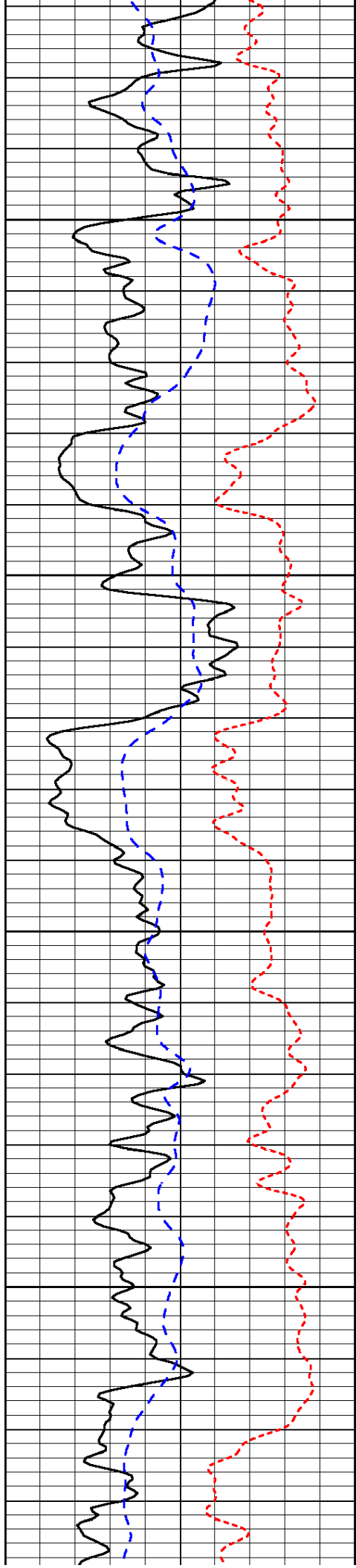


-36

-36

-35

-35

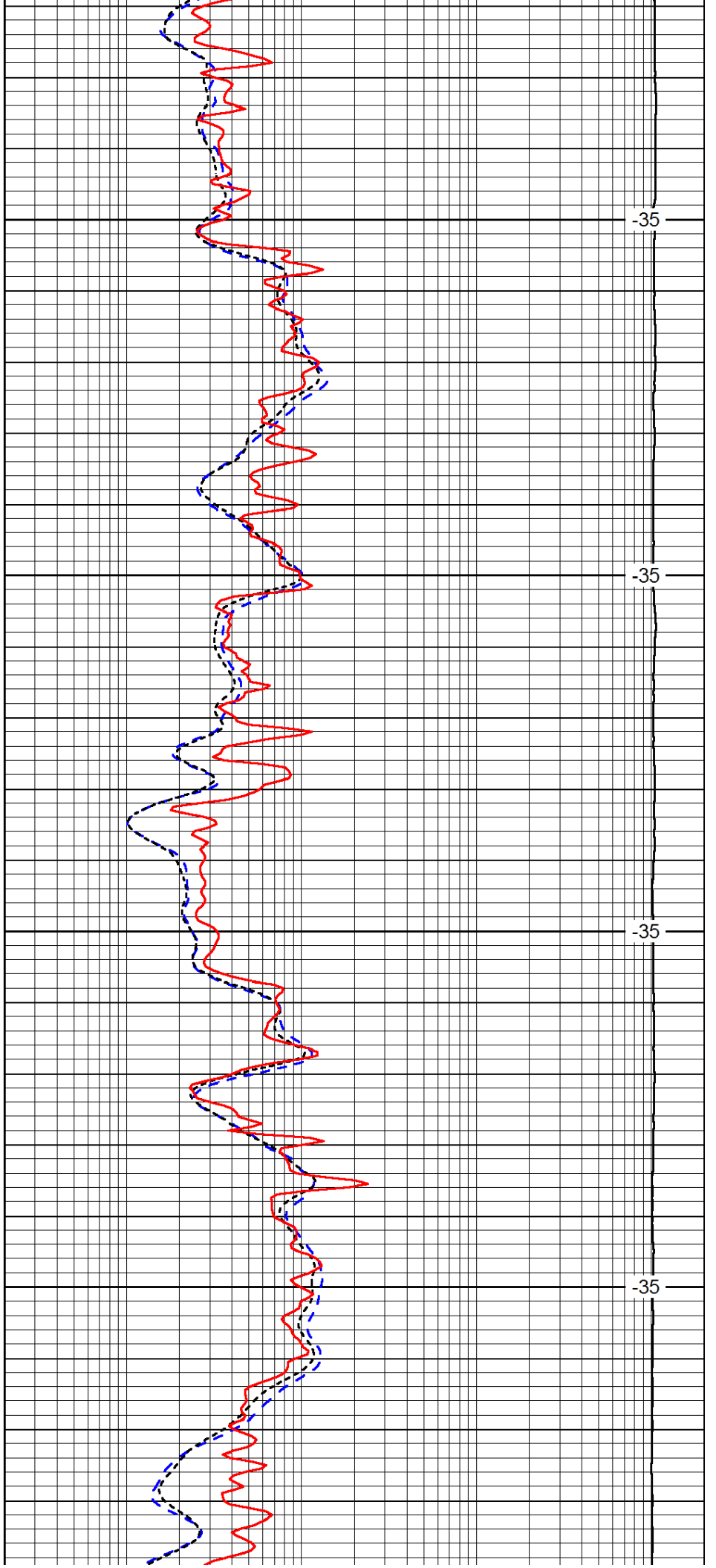


1800

1850

1900

1950

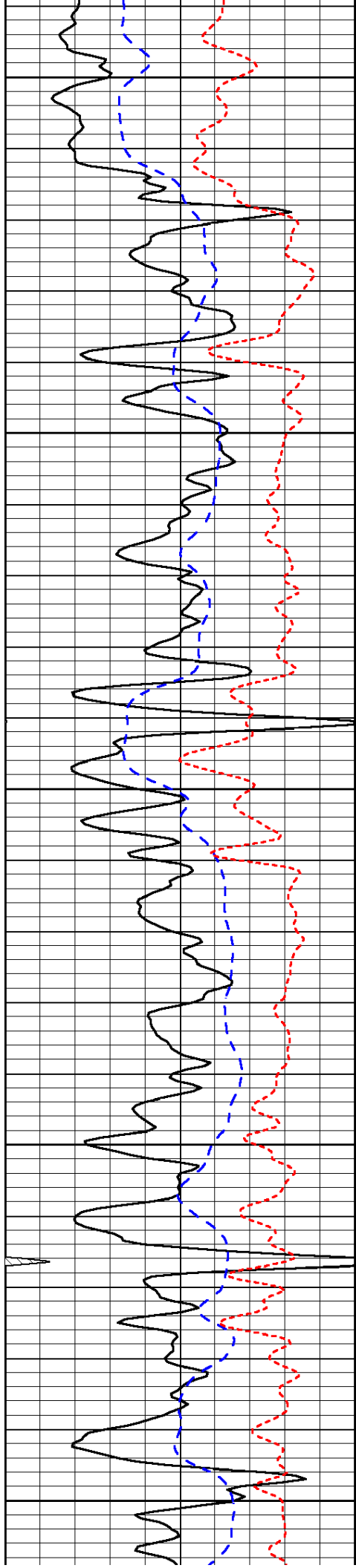


-35

-35

-35

-35



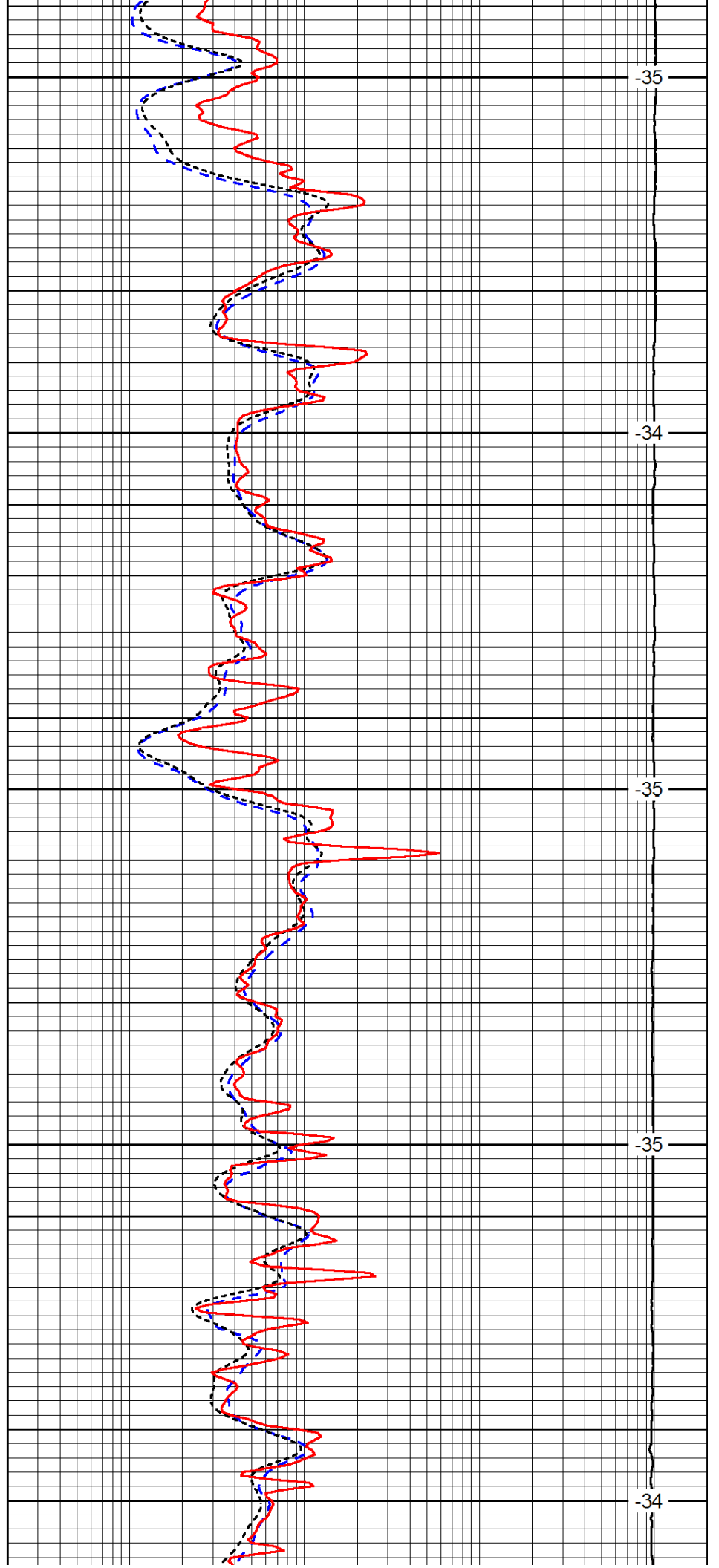
2000

2050

2100

2150

2200



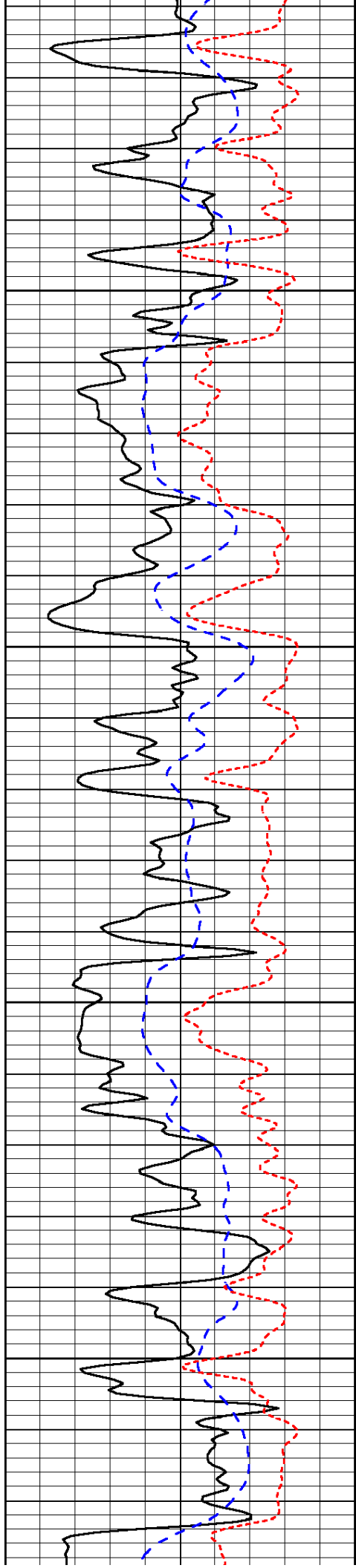
-35

-34

-35

-35

-34

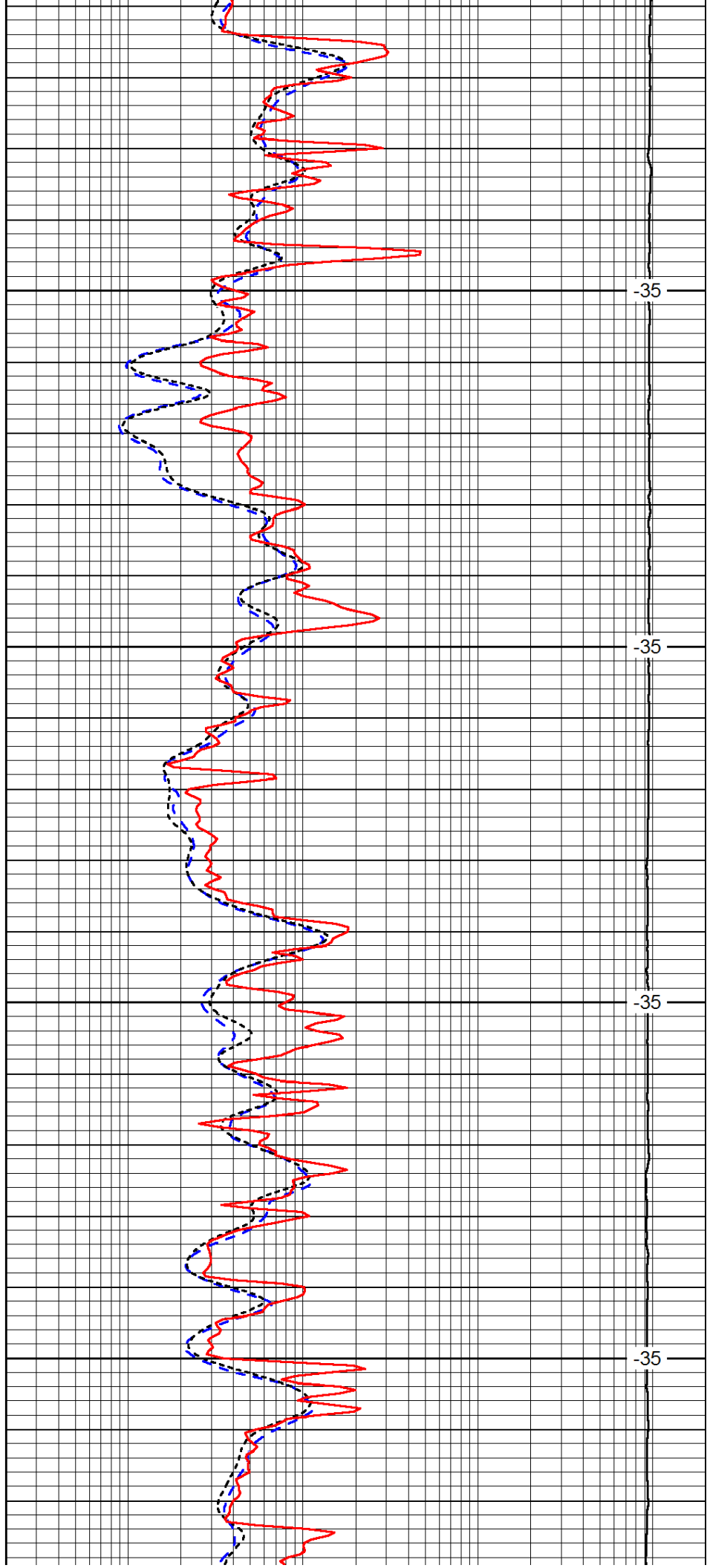


2250

2300

2350

2400

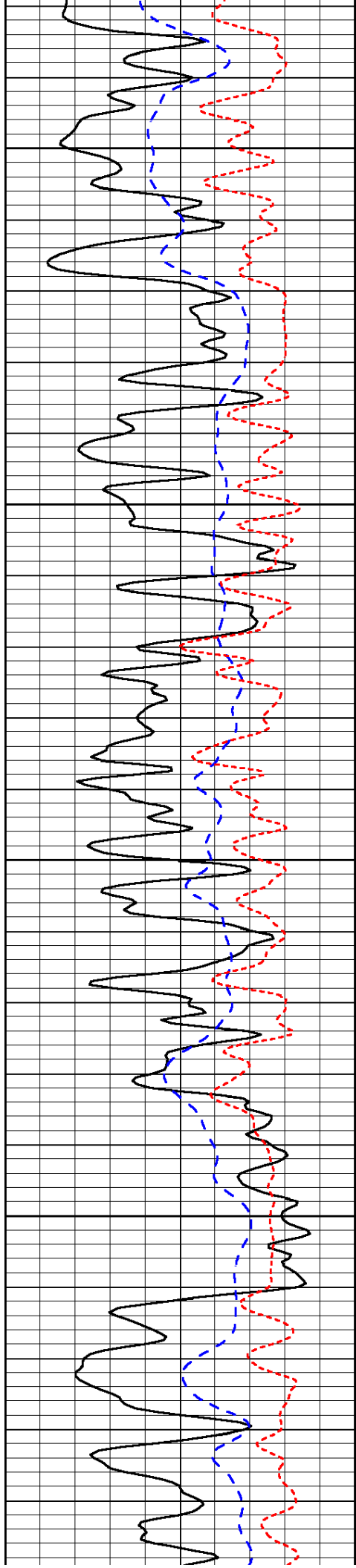


-35

-35

-35

-35

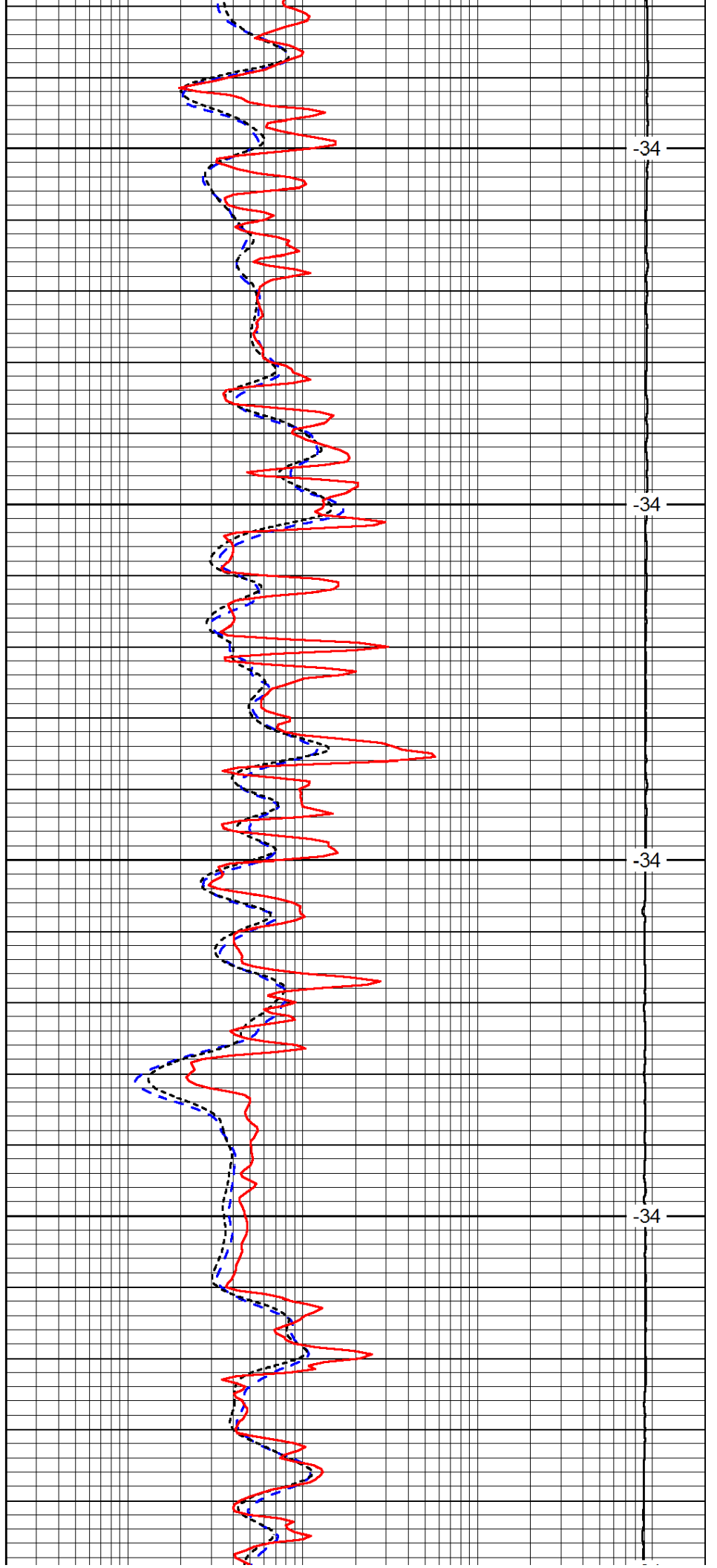


2450

2500

2550

2600

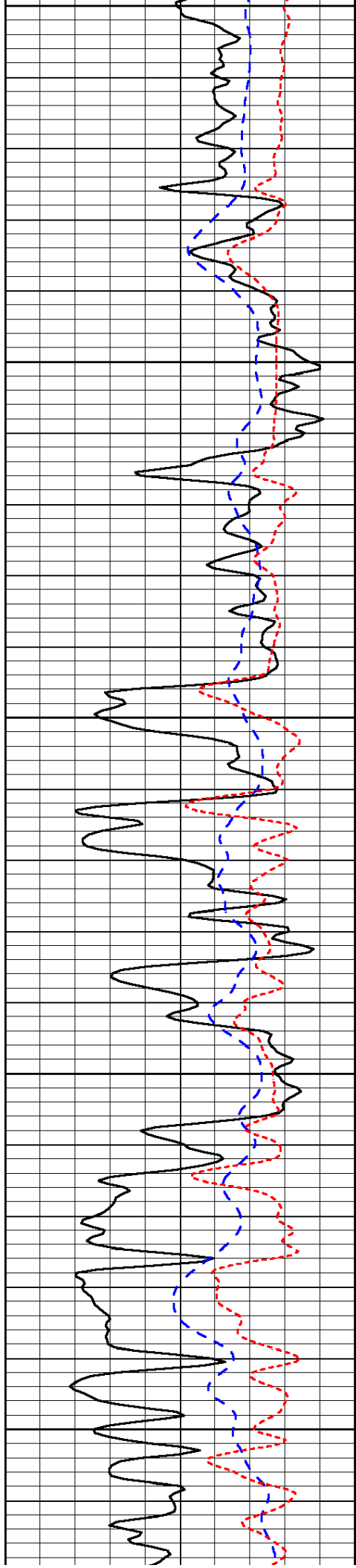


-34

-34

-34

-34



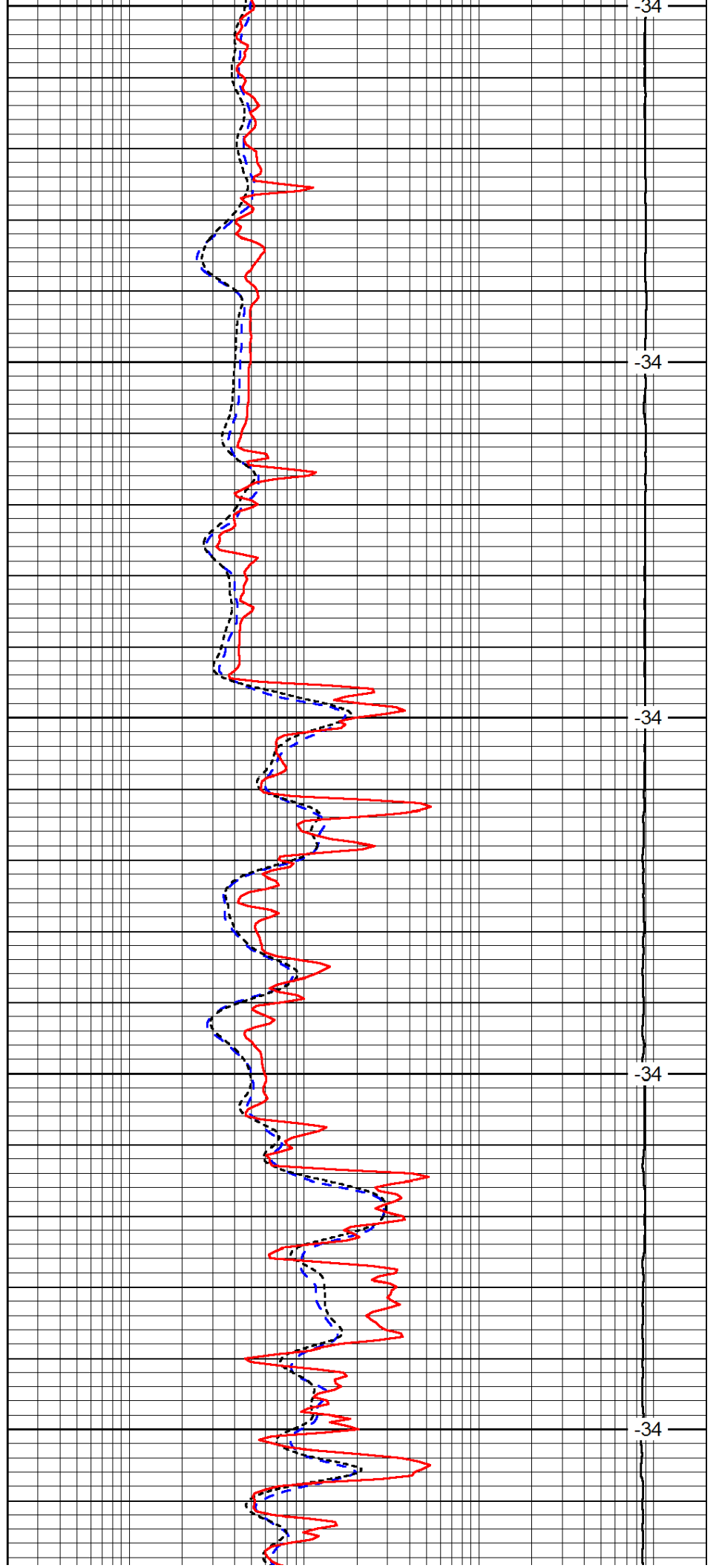
2650

2700

2750

2800

2850



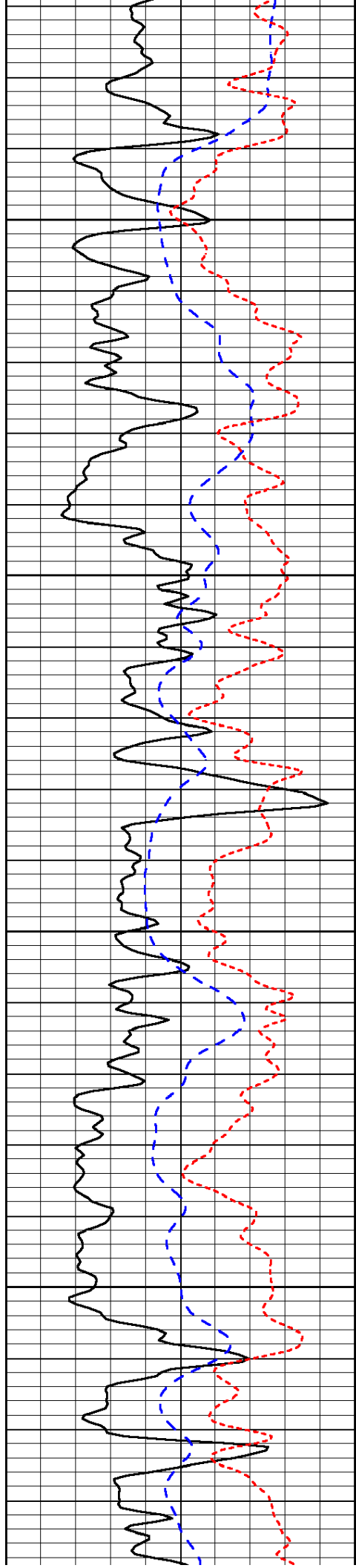
-34

-34

-34

-34

-34

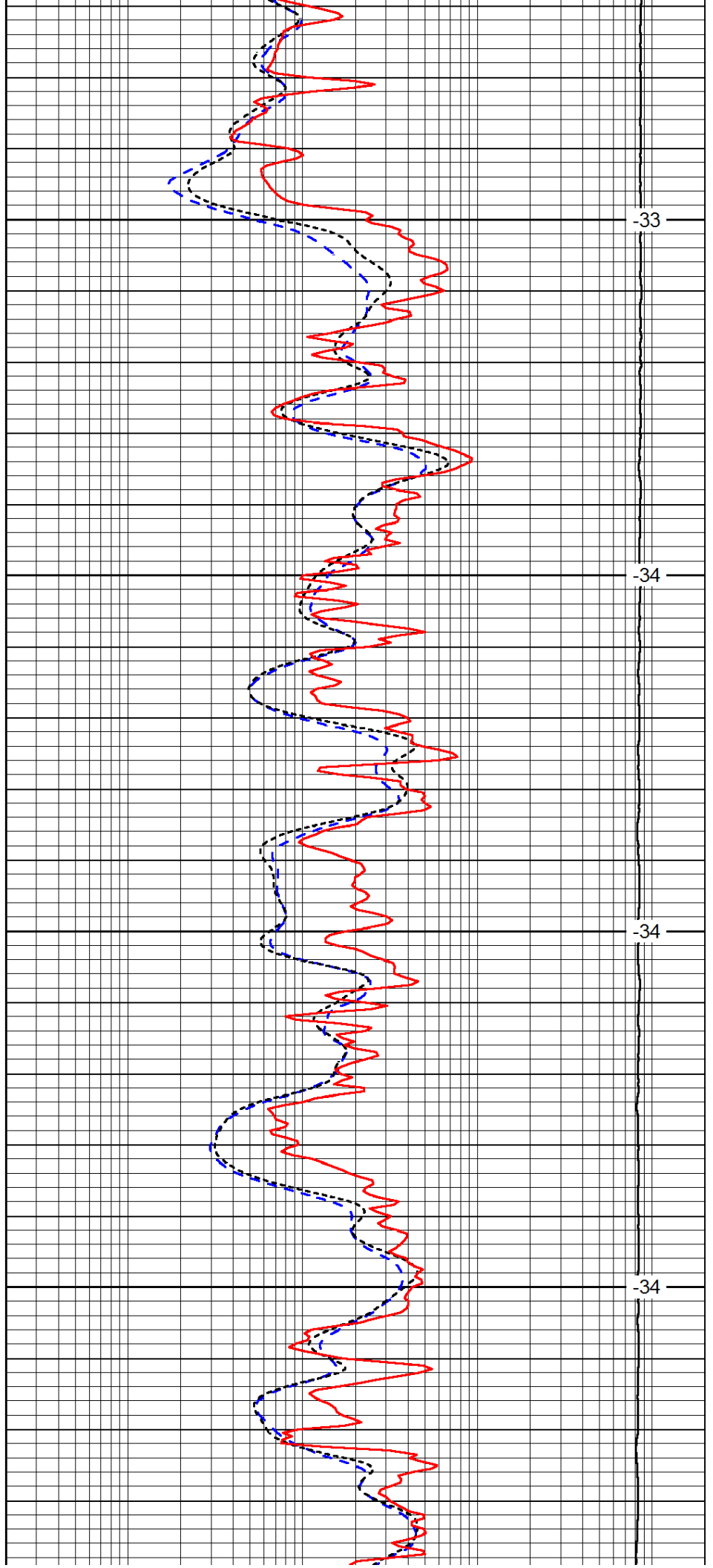


2900

2950

3000

3050

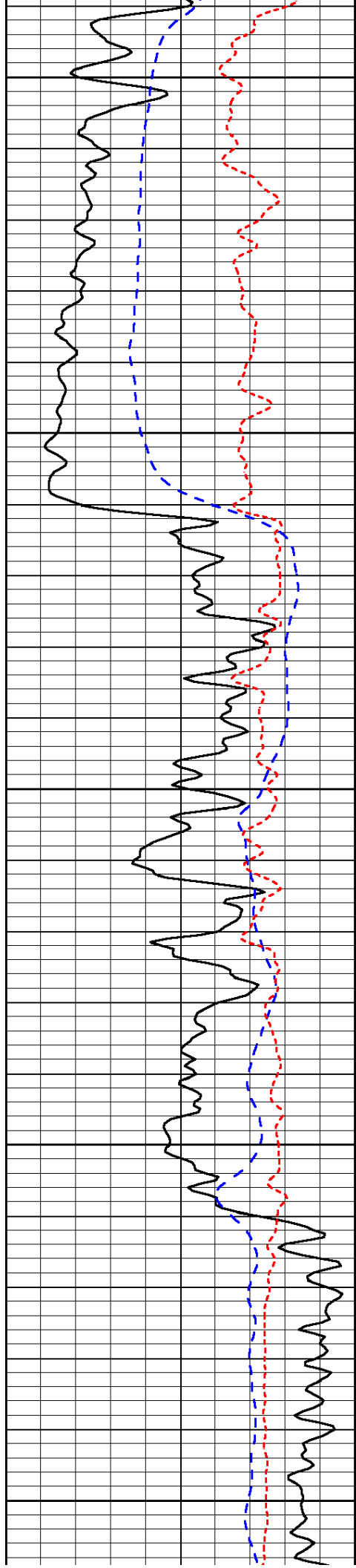


-33

-34

-34

-34



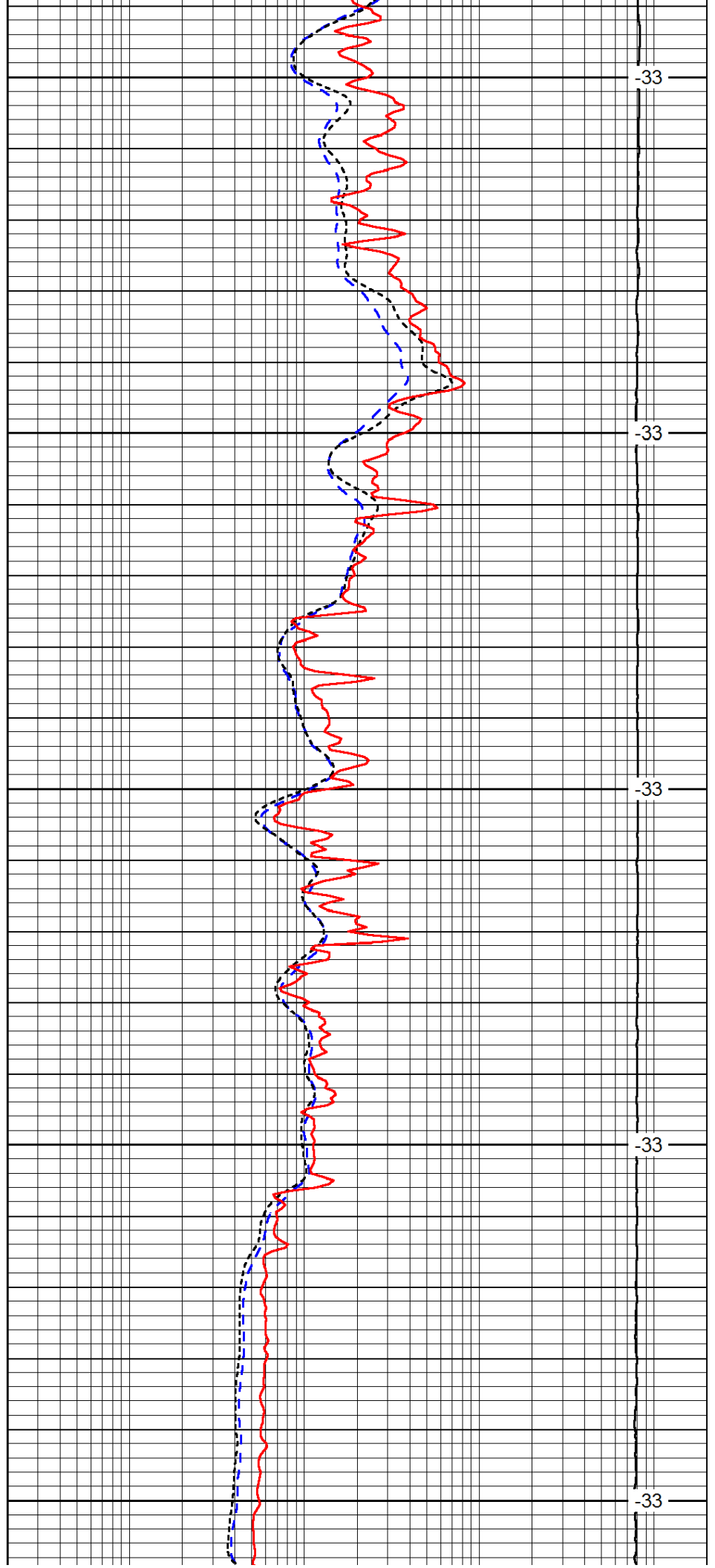
3100

3150

3200

3250

3300



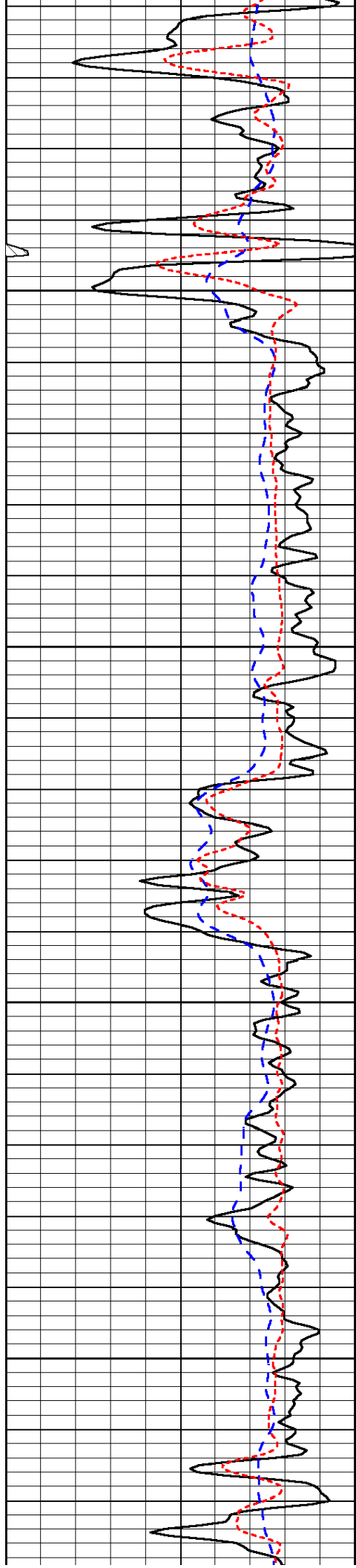
-33

-33

-33

-33

-33

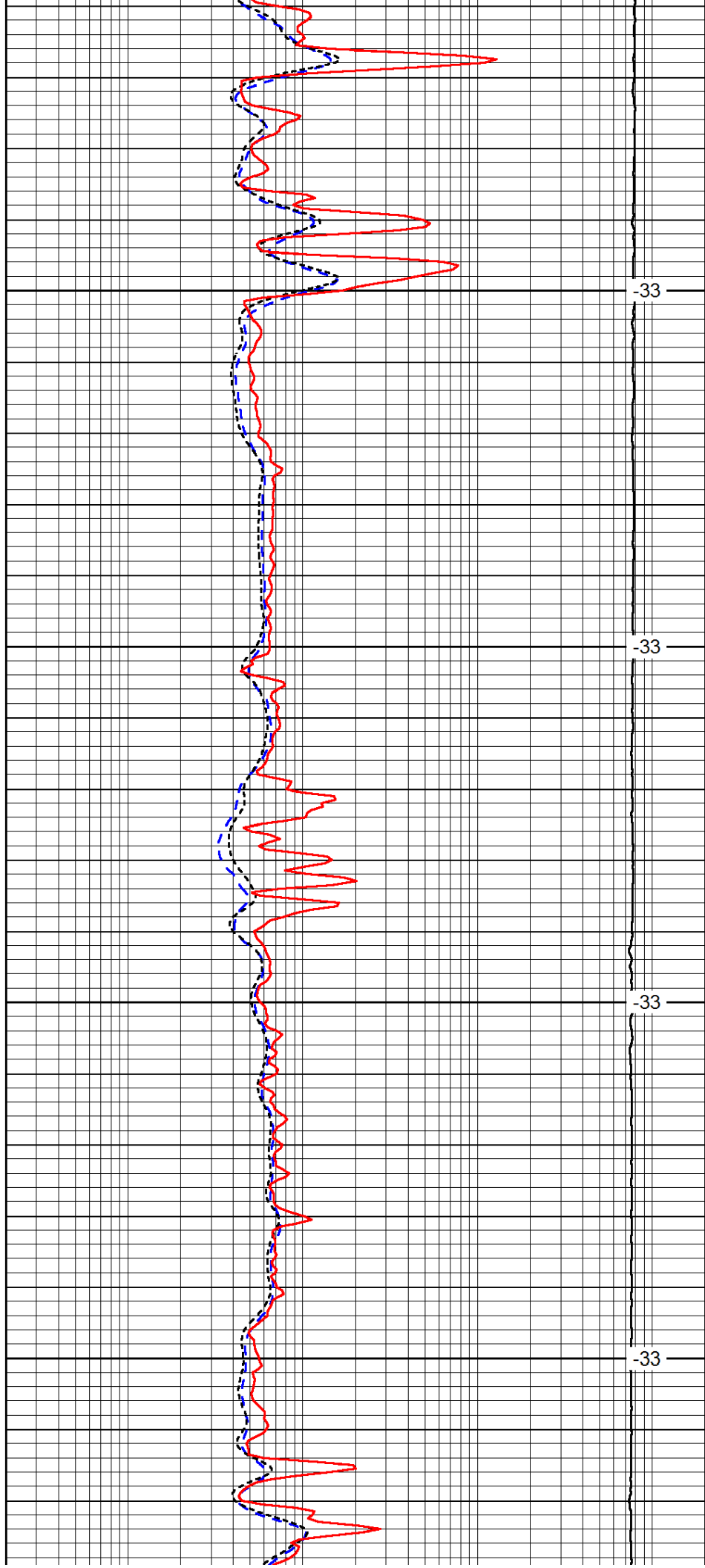


3350

3400

3450

3500

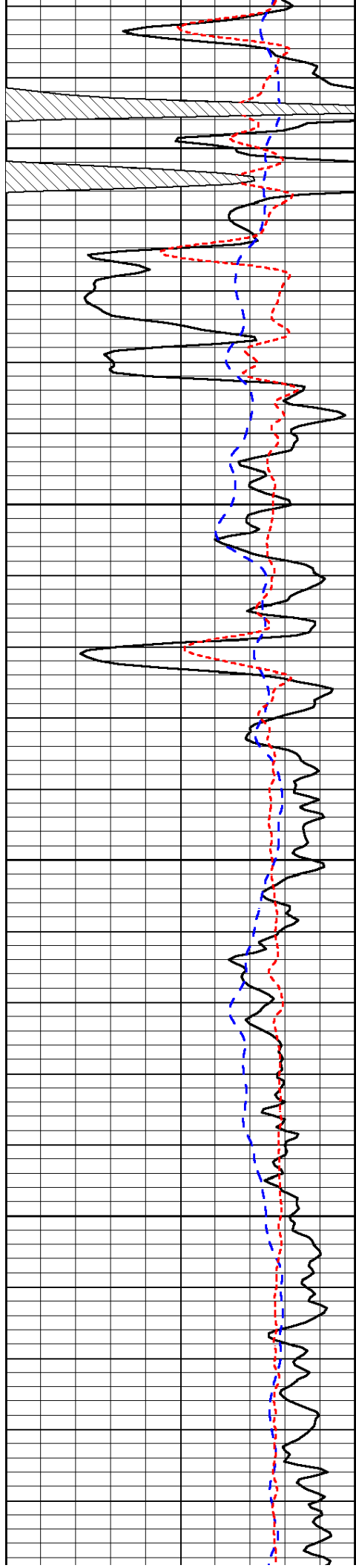


-33

-33

-33

-33

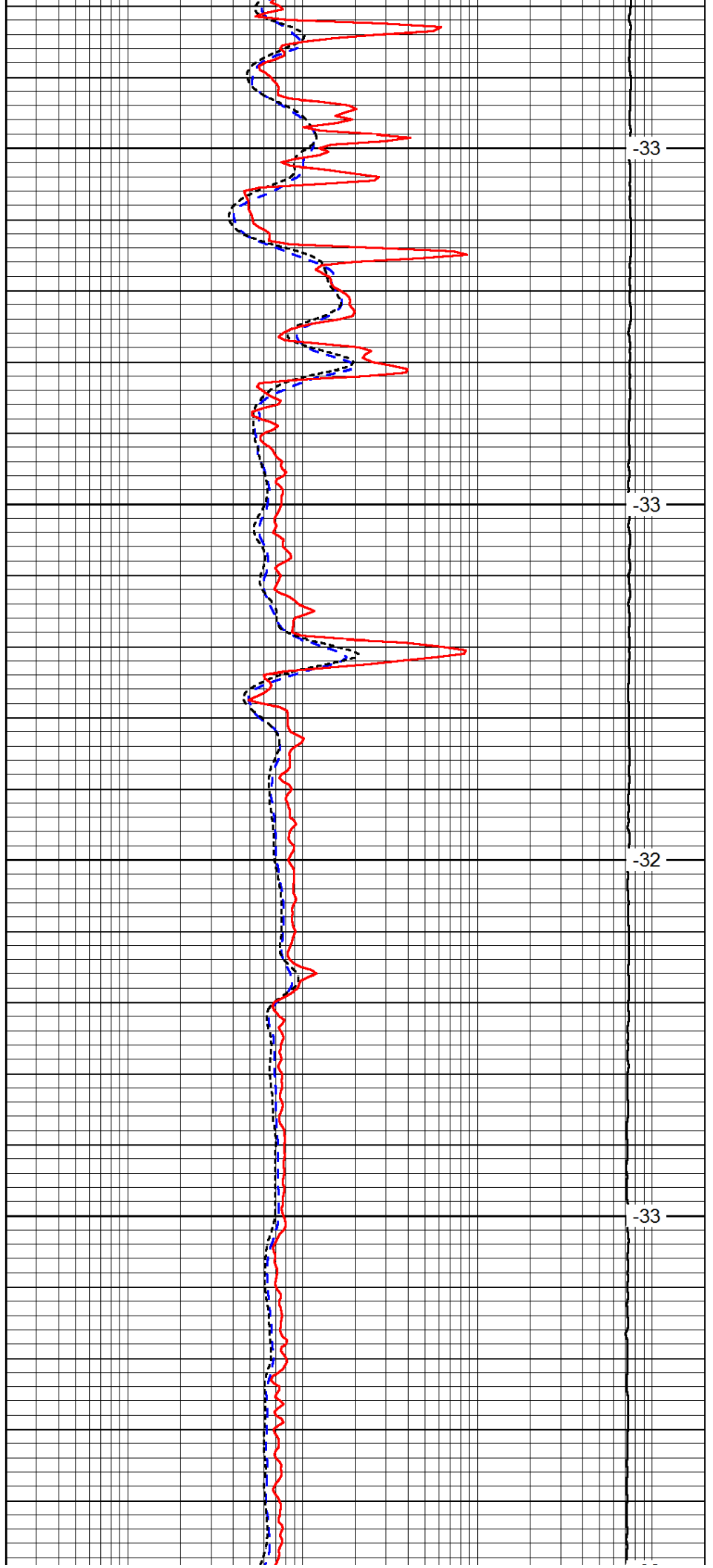


3550

3600

3650

3700

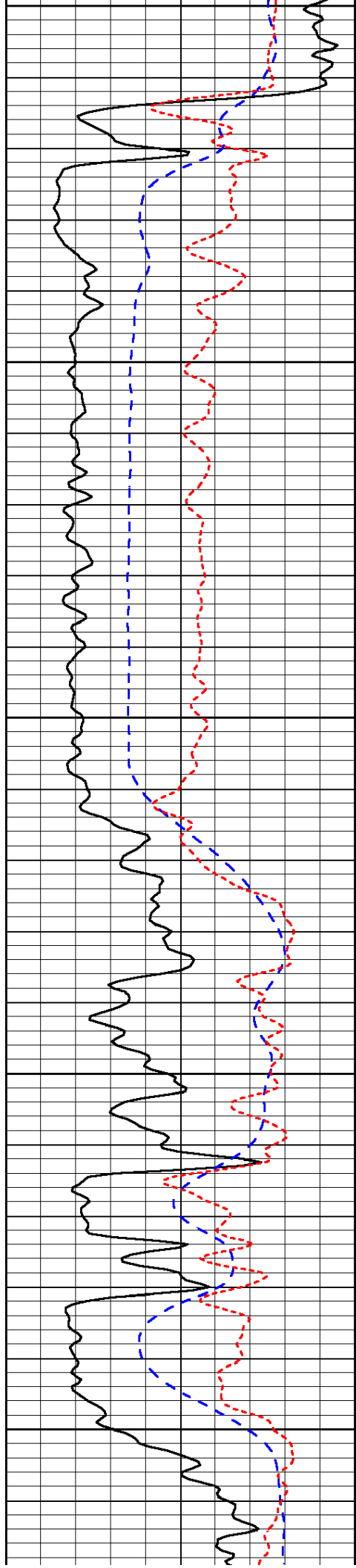


-33

-33

-32

-33



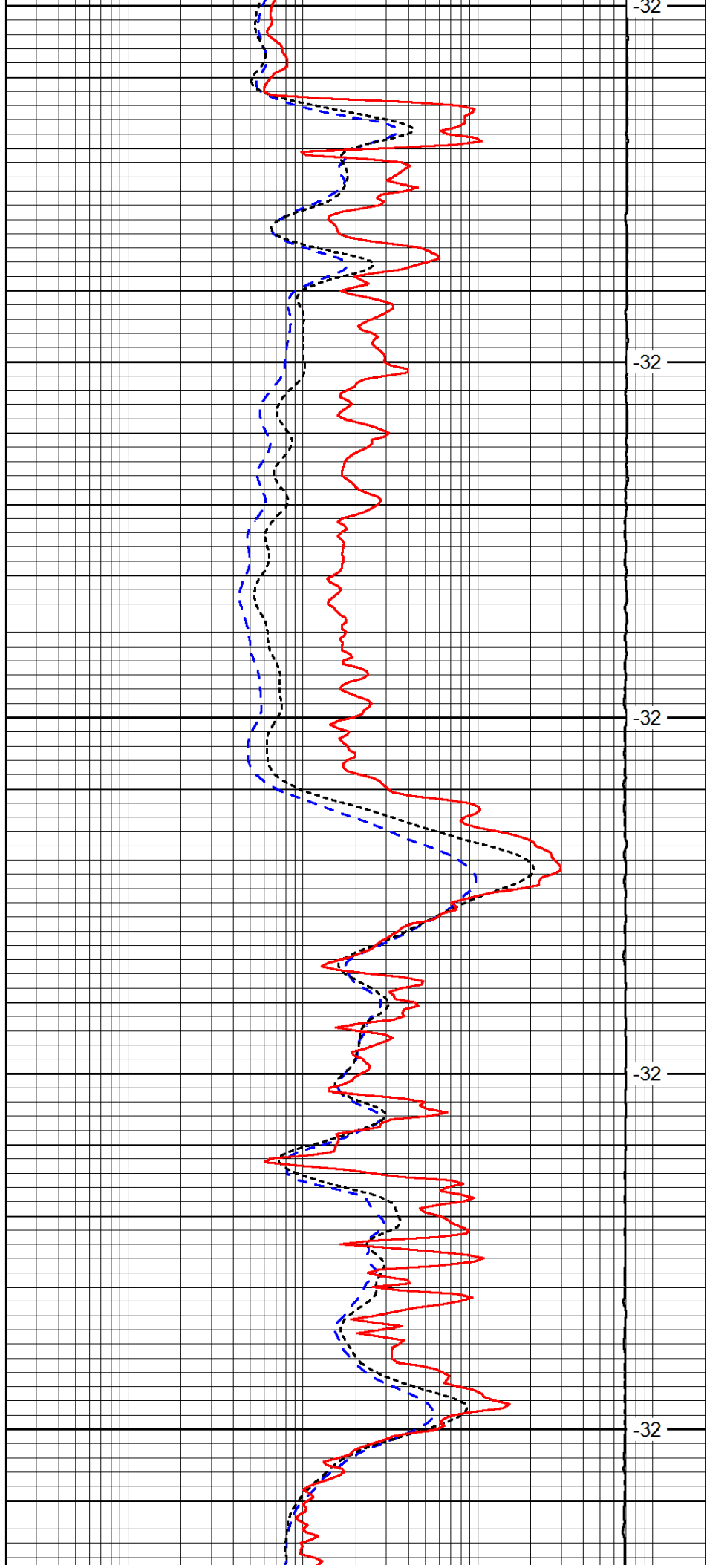
3750

3800

3850

3900

3950



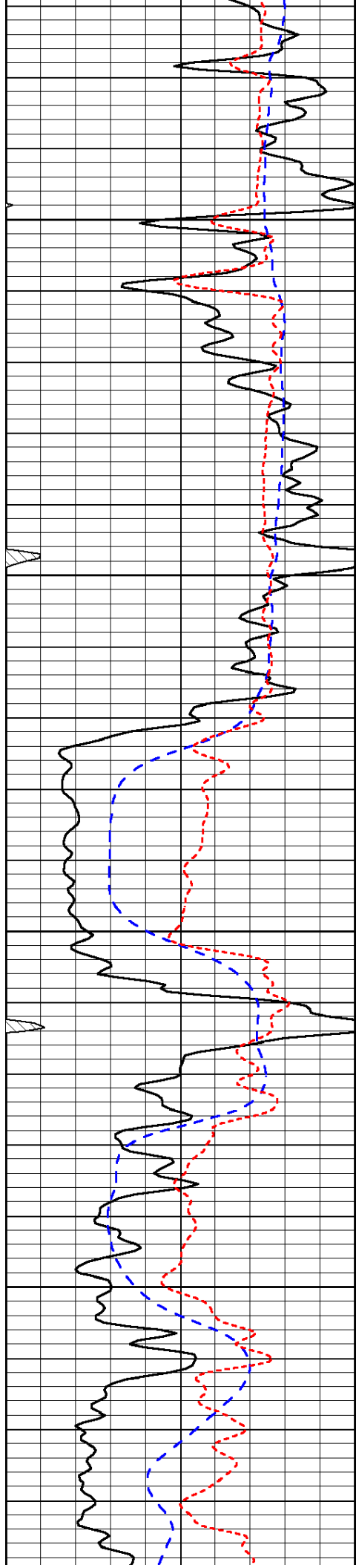
-32

-32

-32

-32

-32

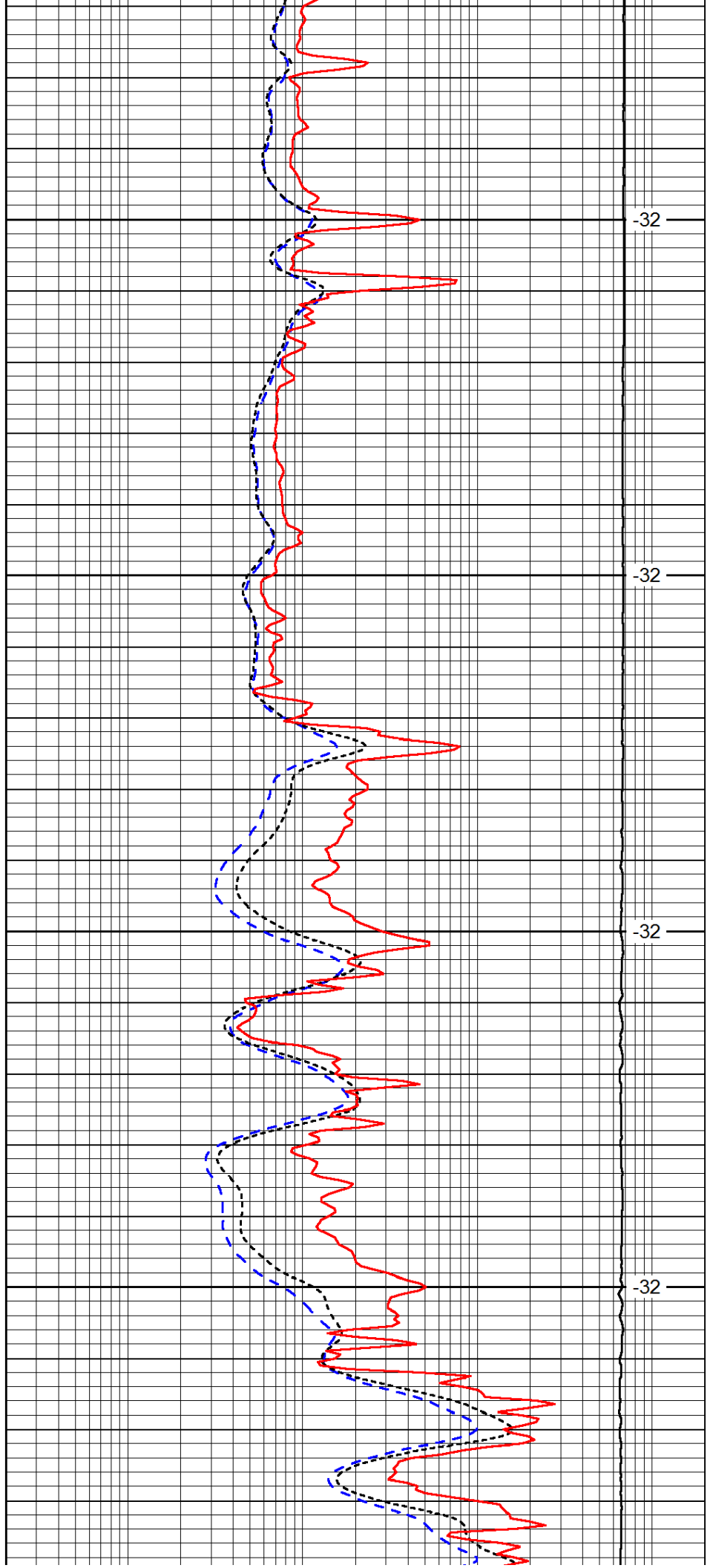


4000

4050

4100

4150

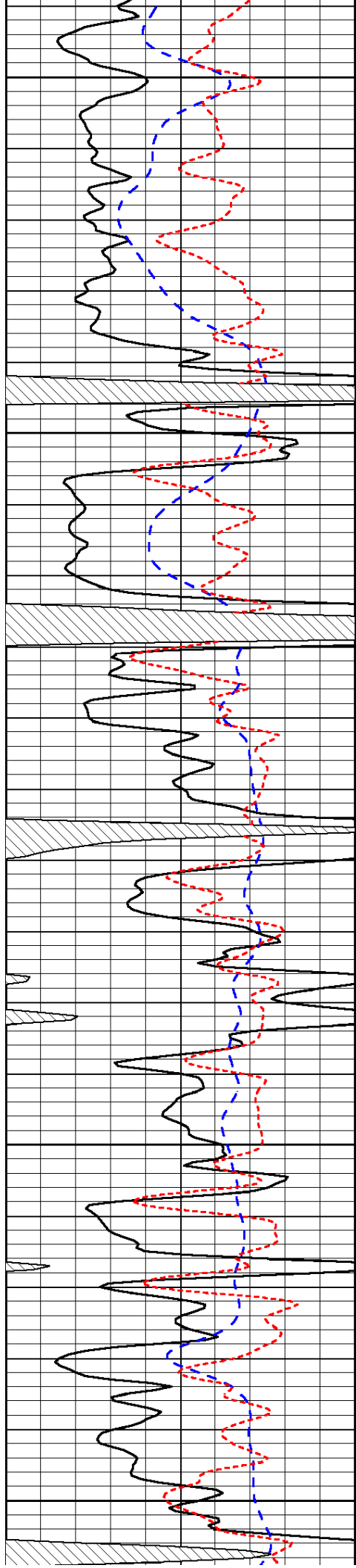


-32

-32

-32

-32



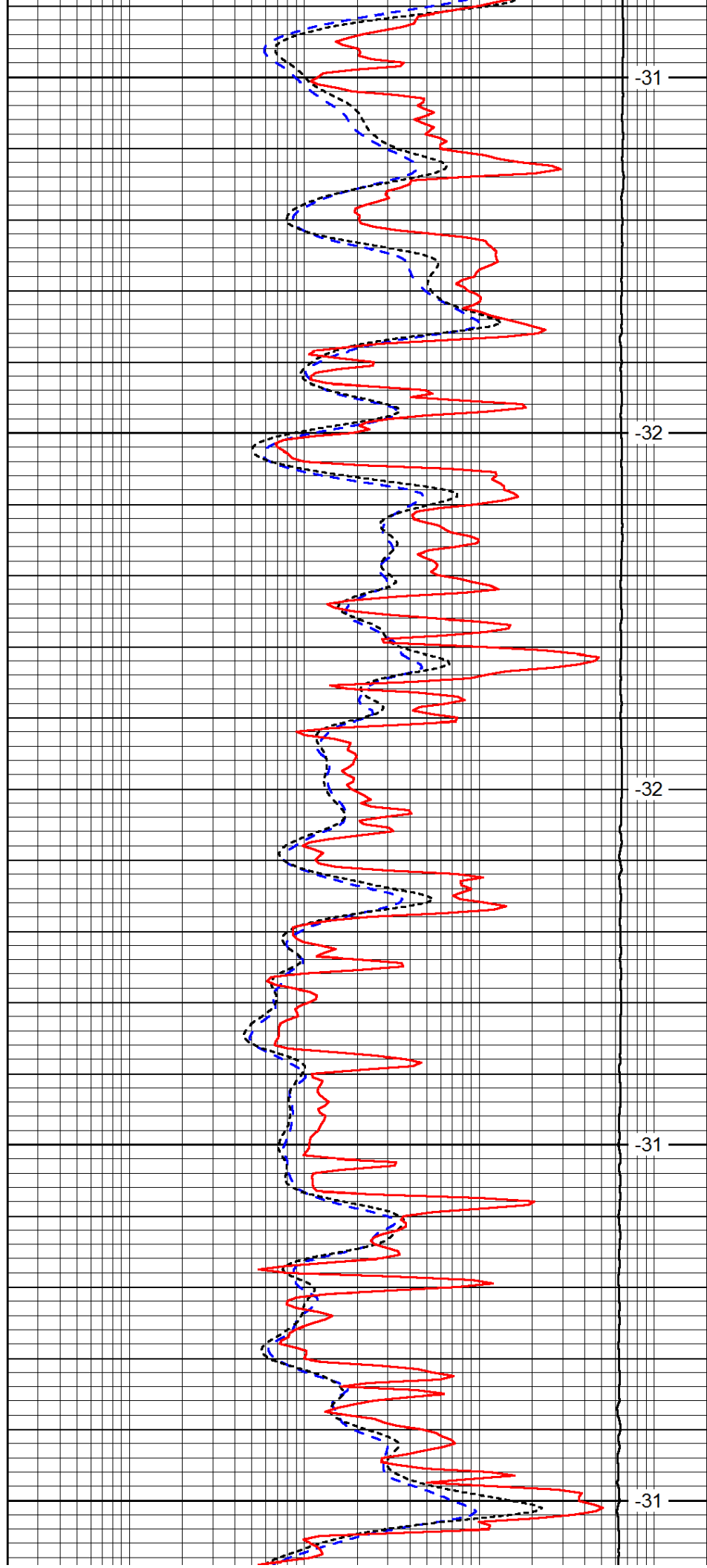
4200

4250

4300

4350

4400



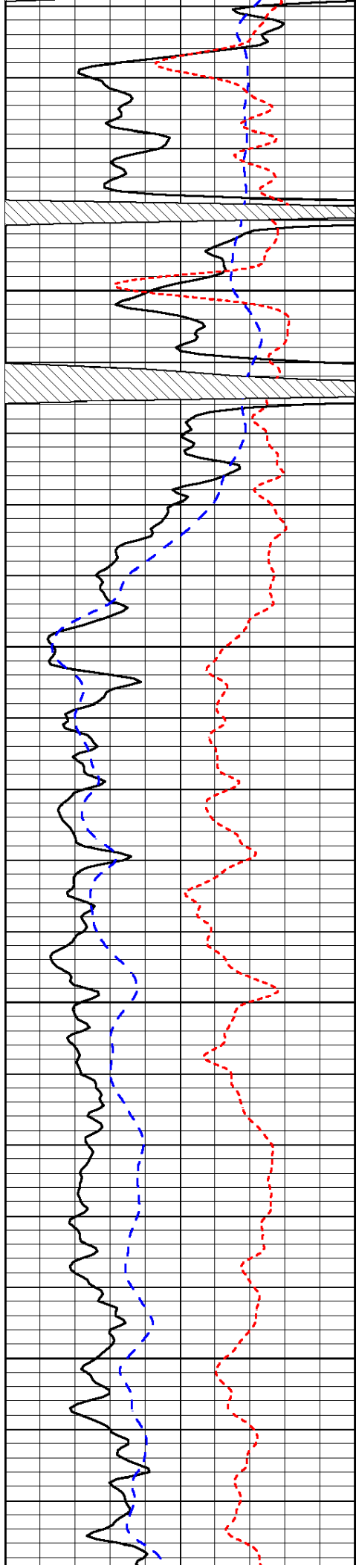
-31

-32

-32

-31

-31

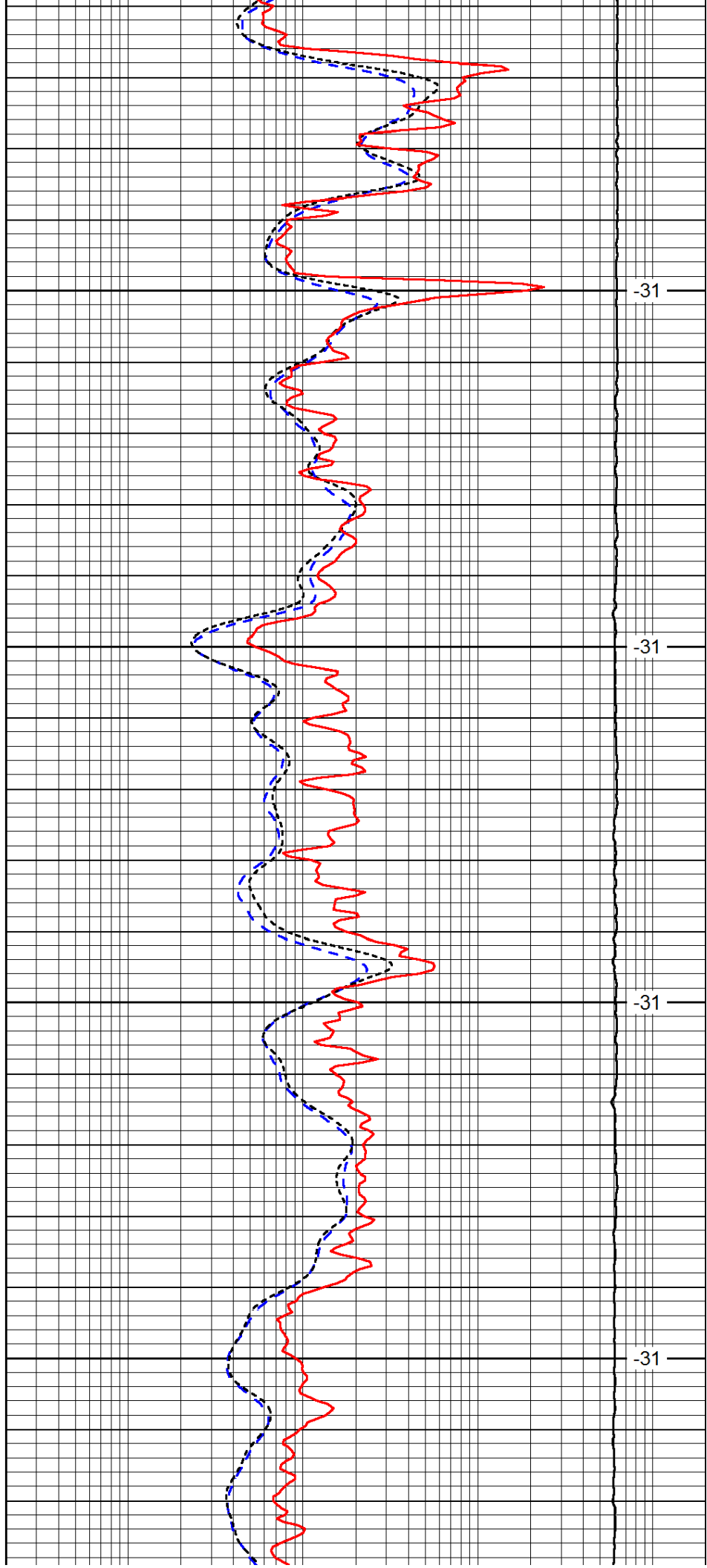


4450

4500

4550

4600

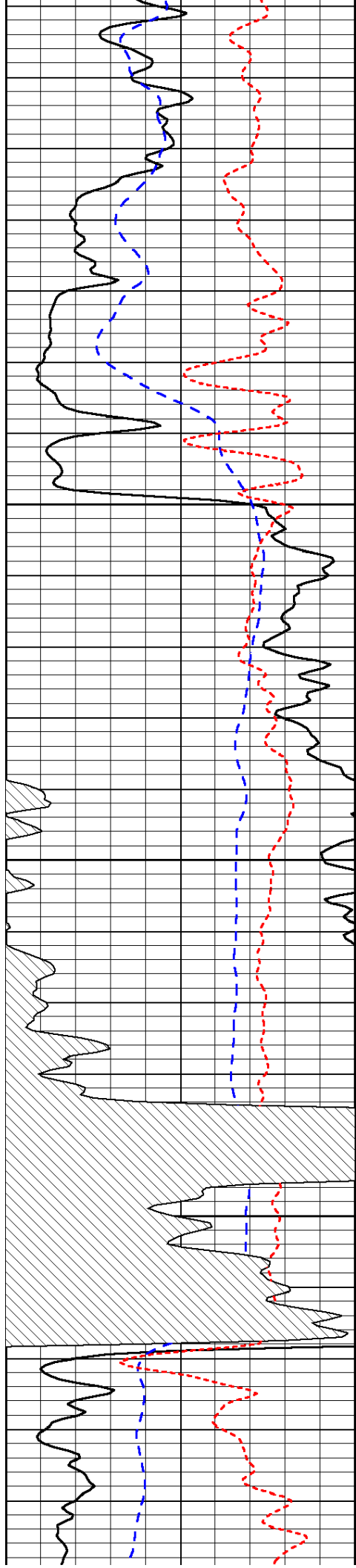


-31

-31

-31

-31

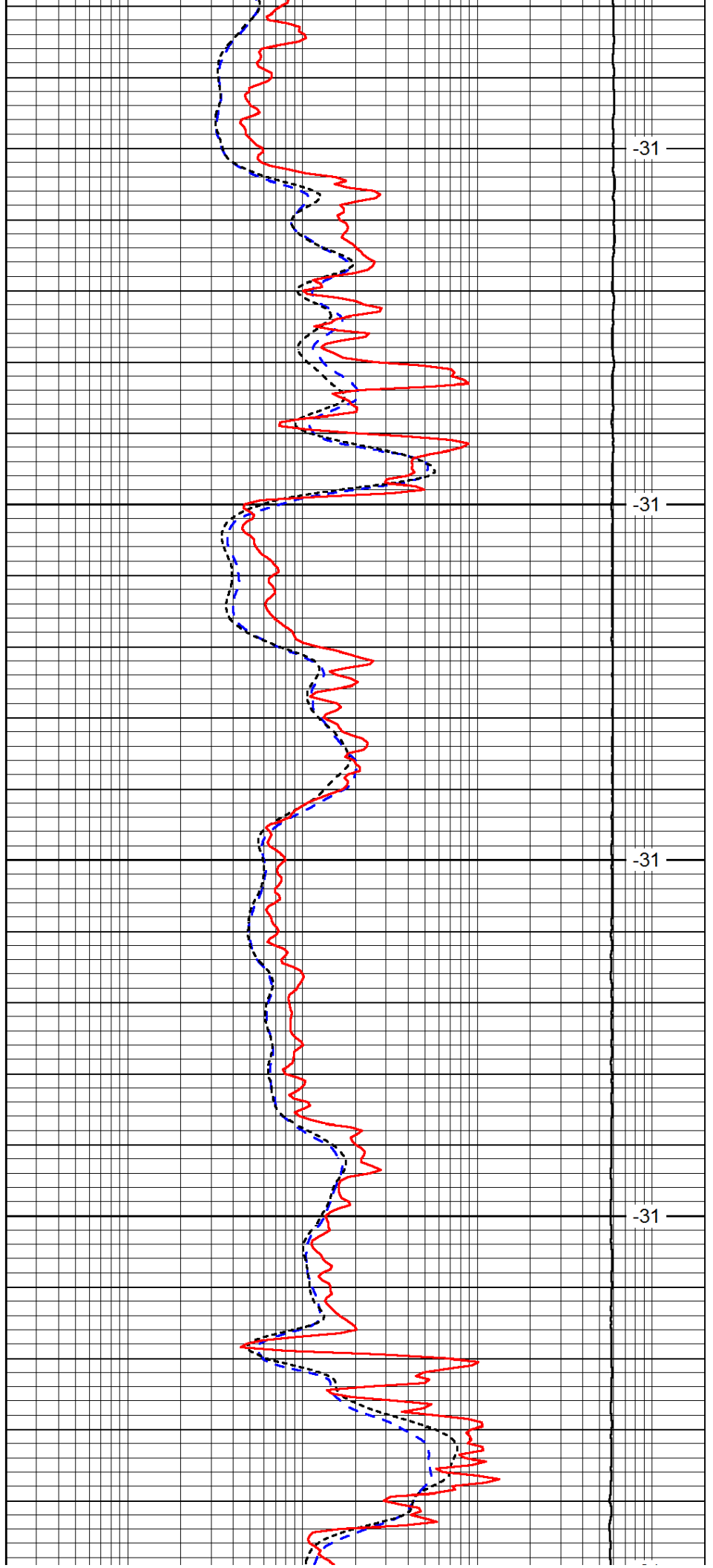


4650

4700

4750

4800

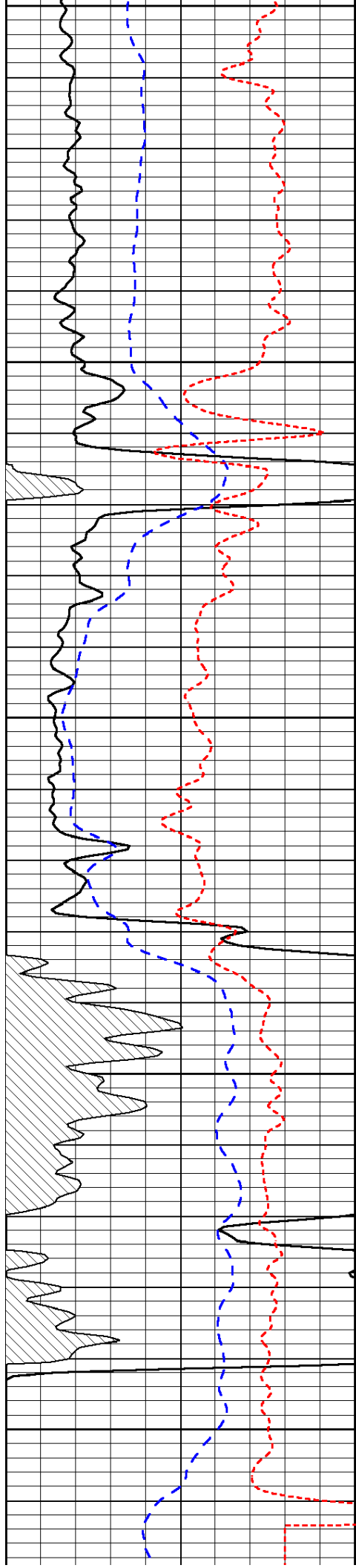


-31

-31

-31

-31



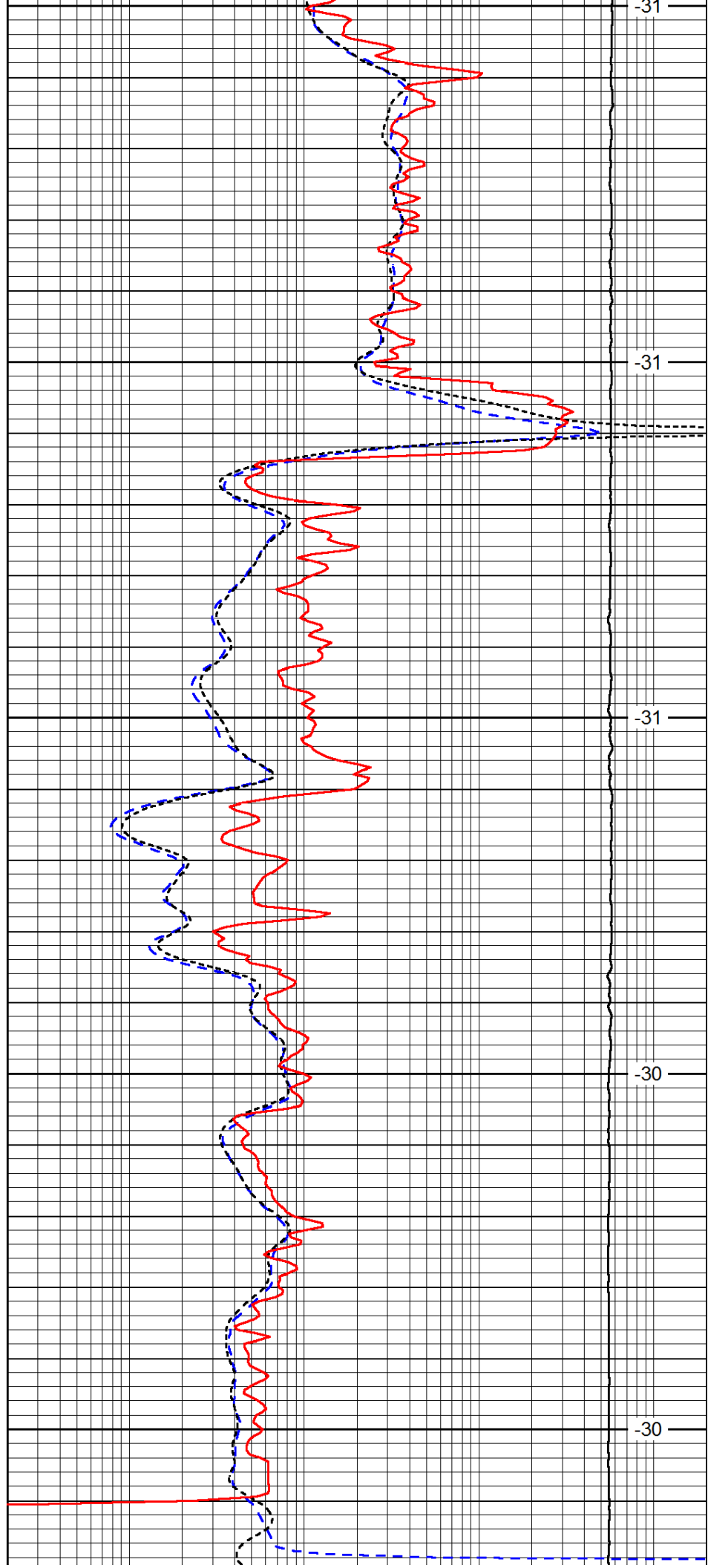
4850

4900

4950

5000

5050



-31

-31

-31

-30

-30

