



MID CONTINENT WELL LOGGING SERVICE, INC.

CONTINUOUS WELL LOGGING / COMPLETE HYDROCARBON ANALYSIS

2222 WESTPARK DR. STE. A
NORMAN, OK 73069
OFFICE (405) 360-7333
OPERATIONS (405) 590-3655
SALES (405) 203-9989

Scale 1:240 (5"=100') Imperial
Measured Depth Log

Well Name: ROONEY 2925 3-24H
Location: SEC 24-T29S-R25W FORD CO., KANSAS
License Number: API No. 15-15-057-20653-01-00
Spud Date: 4/6/2013
Surface Coordinates: SHL: 2,557' FSL & 942' FWL SEC 24-T29S-R25W
BHL: 1,557' FSL & 942' FWL SEC 24-T29S-R25W
Bottom Hole Coordinates: MUDLOGGERS: BRANDON POTTS/ MINDY CAUDILL
Ground Elevation (ft): 2,615' K.B. Elevation (ft): 2,621'
Logged Interval (ft): 5,214' To: 6,362' Total Depth (ft): 6,362'
Formation: MISSISSIPPI
Type of Drilling Fluid: WATER BASED

Region: N. MINNEOLA, KS
Drilling Completed: 4/23/13

Printed by MUD.LOG from WellSight Systems 1-800-447-1534 www.WellSight.com

OPERATOR

Company: SandRidge Energy, Inc.
Address: 123 Robert S Kerr Ave. Ste. 2326
Oklahoma City, OK 73102

GEOLOGIST

Name: Will Sott
Company: SandRidge Energy, Inc.
Address: 123 Robert S. Kerr Ave. Ste. 2326
Oklahoma City, OK 73102

Cores

DSTs

Comments

ROCK TYPES

Anhy	Clyst	Gyp	Mrlst	Shgy
Bent	Coal	Igne	Salt	Sltst
Brec	Congl	Lmst	Shale	Ss
Cht	Dol	Meta	Shcol	Till

ACCESSORIES

MINERAL	Gyp	FOSSIL	Ostra	Sltstrg
Anhy	Hvymin	Algae	Pelec	Ssstrg
Arggrn	Kaol	Amph	Pellet	TEXTURE
Arg	Marl	Belm	Pisolite	Boundst
Bent	Minxl	Bioclst	Plant	Chalky
Bit	Nodule	Brach	Strom	Cryxln
Brecfrag	Phos	Bryozoa	STRINGER	Earthy
Calc	Pyr	Cephal	Anhy	Finexln
Carb	Salt	Coral	Arg	Grainst
Chtdk	Sandy	Crin	Bent	Lithogr
Chtlt	Silt	Echin	Coal	Microxln
Dol	Sil	Fish	Dol	Mudst
Feldspar	Sulphur	Foram	Gyp	Packst
Ferrpel	Tuff	Fossil	Ls	Wackest
Ferr		Gastro	Mrst	
Glau		Oolite		

OTHER SYMBOLS

POROSITY	Vuggy	ROUNDING	Spotted	EVENT
Earthy	SORTING	Rounded	Ques	Rft
Fenest	Well	Subrnd	Dead	Sidewall
Fracture	Moderate	Subang	INTERVAL	
Inter	Poor	Angular	Core	
Moldic		OIL SHOW	Dst	
Organic		Even		
Pinpoint				

Survey Data	ROP		Depth	Geological Descriptions	TG, C1-C5				Fluorometer		
	ROP (min/ft)	Gamma (API)			TG (Units)	C1 (units)	C2 (units)	C3 (units)	C4 (units)	C5 (units)	Fluorometer
	0	10	51	SANDRIDGE ENERGY, INC.	0				100	0	500
	0	150		ROONEY 2925 3-24H RE							
				SEC 24-T29S-R25W							
				FORD CO., KS 2,557'							
				FSL & 942' FWL NW							

NE NW SW
GL: 1,615' KB: 1,621'

BIT #1 4.75" SMITH
XR4DY JETS OPEN
MOTOR BEND 2.54°

BEGIN LOGGING GAS
AND ROP
4-11-2013 @ 5,214'

GAS

ROP=BLUE
GAMMA=RED

ROP (min/ft) 10
Gamma (API) 150

TG, C1-C5 1000 Fluorometer 500

WT- 8.8
VIS- 42

WT- 8.8
VIS- 44
04/12/13

MD 5278 TVD 5275.62
INC 22.08 AZ 136.45
VS -14.35

WT- 8.8
VIS- 42

MD 5310 TVD 5304.24
INC 30.89 AZ 141.13
VS -3.77

MD 5331 TVD 5321.8
INC 35.59 AZ 147.42
VS 5.44

MD 5340 TVD 5328.95
INC 38.18 AZ 150.46
VS 29.96

WT- 8.8
VIS- 48

MD 5372 TVD 5352.77
INC 45.65 AZ 160
VS 29.33

04/13/13

WT 8.8

5200

5250

5300

5350

0

MORROW @ 5,310'
MD (5,304' TVD)

MISSISSIPPI @ 5,370'
MD (5,355' TVD)

TOOH @ 5,382' FOR
NEW MUD MOTOR
MOTOR BEND 1.53°

KD

KD

KD

KD

KD

KD

DTG 133u

FG 181u

CG 108u

FG 59u

MUD CHK @
5,332'

WT- 8.6

VIS- 36

PV- 10

YP- 2

GEL- 1/2

FIL- 7.6

CK- 2

SOL- 4

WTR- 98.3

PH- 10.1

CHLR- 23,000

ENVIRO TORQ- 5

CG 49u

WT- 8.8
VIS- 48
MD 5403 TVD 5372
INC 57.54 AZ 164.6
VS 52.28

04/14/13

MD 5435 TVD 5386.51
INC 68.45 AZ 168.54
VS 79.83

WT- 8.8
VIS- 60

MD 5465 TVD 5395.61
INC 76.23 AZ 174.09
VS 107.96

WT- 8.8
VIS- 71

MD 5499 TVD 5400.92
INC 85.8 AZ 180.72
VS 141.41

04/15/13

MD 5531 TVD 5402.25
INC 89.44 AZ 182.91
VS 173.37

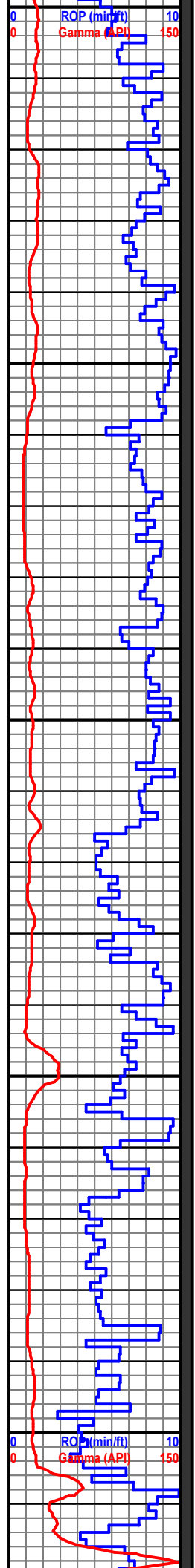
WT- 8.8
VIS- 45

04/16/13

MD 5563 TVD 5402.43
INC 89.93 AZ 183.61
VS 205.35

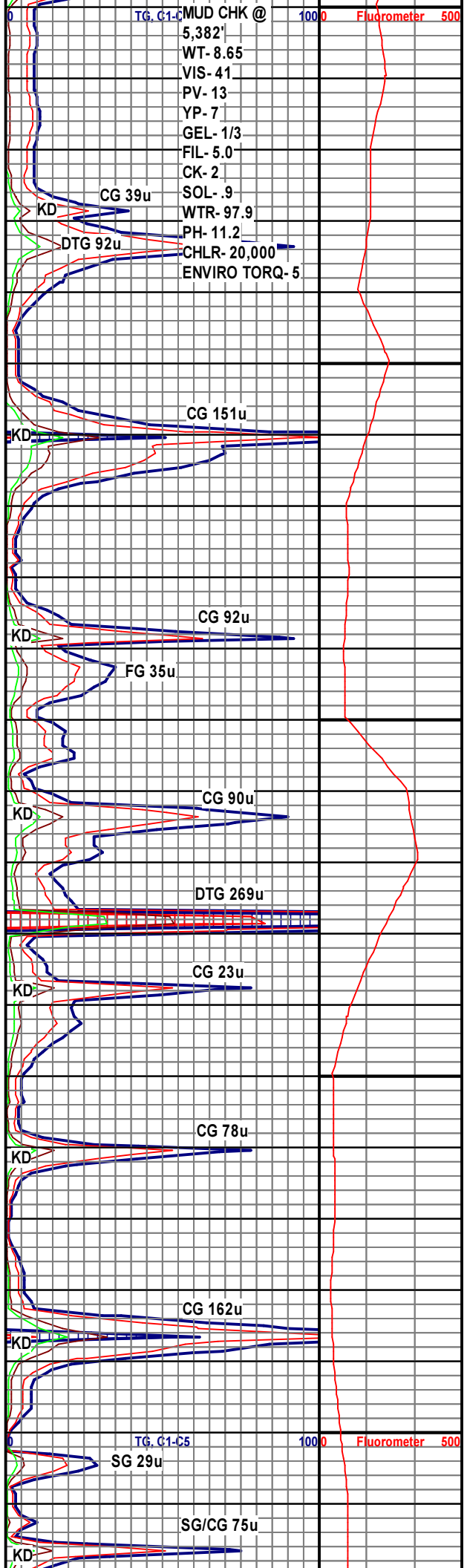
MD 5594 TVD 5402.6
INC 89.44 AZ 183.02
VS 236.33

WT- 8.8
VIS- 48



5400
5450
5500
5550
5600

**TOOH @ 5,512' FOR
NEW BIT
BIT #2 4 3/4"
SECURITY FX63
3X14'S MOTOR BEND
1.53°**



TG, C1-C
MUD CHK @ 5,382'
WT- 8.65
VIS- 41
PV- 13
YP- 7
GEL- 1/3
FIL- 5.0
CK- 2
SOL- .9
WTR- 97.9
PH- 11.2
CHLR- 20,000
ENVIRO TORQ- 5
CG 39u
DTG 92u
CG 151u
CG 92u
FG 35u
CG 90u
DTG 269u
CG 23u
CG 78u
CG 162u
SG 29u
SG/CG 75u
TG, C1-C5
1000
Fluorometer 500

MD 5626 TVD 5402.5
INC 90.91 AZ 182.48
VS 268.32

WT- 8.7
VIS- 55

04/17/13

MD 5658 TVD 5401.41
INC 93.01 AZ 182.12
VS 300.29

MD 5690 TVD 5399.41
INC 94.13 AZ 183.86
VS 332.21

WT- 8.5
VIS- 49

MD 5721 TVD 5396.97
INC 94.9 AZ 184.04

WT- 8.7
VIS- 57

MD 5753 TVD 5394.2
INC 95.04 AZ 182.81
VS 394.94

MD 5785 TVD 5391.54
INC 94.48 AZ 180.87
VS 426.82

WT- 8.7
VIS- 50

MD 5817 TVD 5389.18
INC 93.99 AZ 179.49
VS 458.73

04/18/13

5650

5700

5750

5800

TOOH @ 5,657' FOR
NEW BIT AND MUD
MOTOR
BIT #3 SMITH FH16H
3X32'S

ROP (min/ft) 10
Gamma (API) 150

CG 108u

KD

BUG 108u

DTG 45u

KD

CG 88u

DTG 46u

DTG 78u

MUD CHK @
5,694'

WT- 8.5

VIS- 48

PV- 16

YP- 7

GEL- 7/12/18

FIL- 4.0

CK- 2

SOL- .5

WTR- 98.8

PH- 10.0

CHLR- 10,500

ENVIRO TORQ- 5

CG 86u

KD

CG 93u

KD

DTG 23u

CG 81u

KD

TG, C1-C5 1000

Fluorometer 500

CG 22u

KD

DTG 41u

04/18/13

WT- 8.7
VIS- 55

MD 5849 TVD 5387.17
INC 93.22 AZ 177.62
VS 490.63

WT- 8.7
VIS- 54

MD 5881 TVD 5385.82
INC 91.61 AZ 175.35
VS 522.49

04/19/13

WT- 8.8
OUT 59

MD 5912 TVD 5385.29
INC 90.35 AZ 175.93
VS 553.34

MD 5944 TVD 5385.64
INC 88.39 AZ 176.9
VS 585.22

WT- 8.8
OUT 58

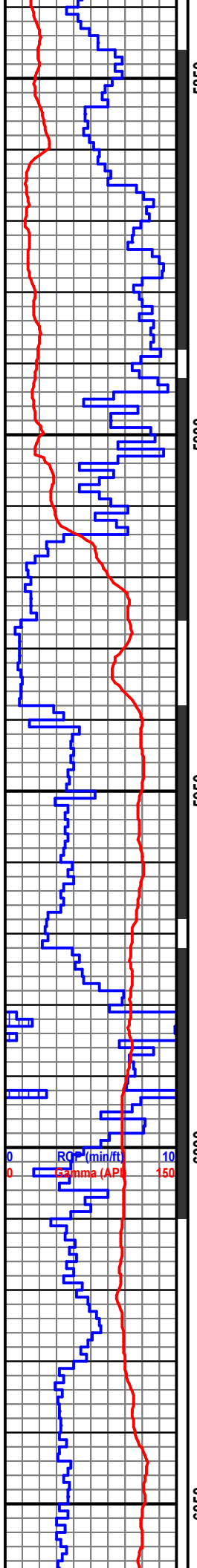
MD 5977 TVD 5386.93
INC 87.13 AZ 178.05
VS 618.12

WT- 8.8
VIS- 59

MD 6008 TVD 5388.37
INC 87.55 AZ 178.64
VIS 649.00

WT- 8.8
VIS- 56

MD 6040 TVD 5389.82
INC 87.27 AZ 179.87
VS 681.00



5550

5900

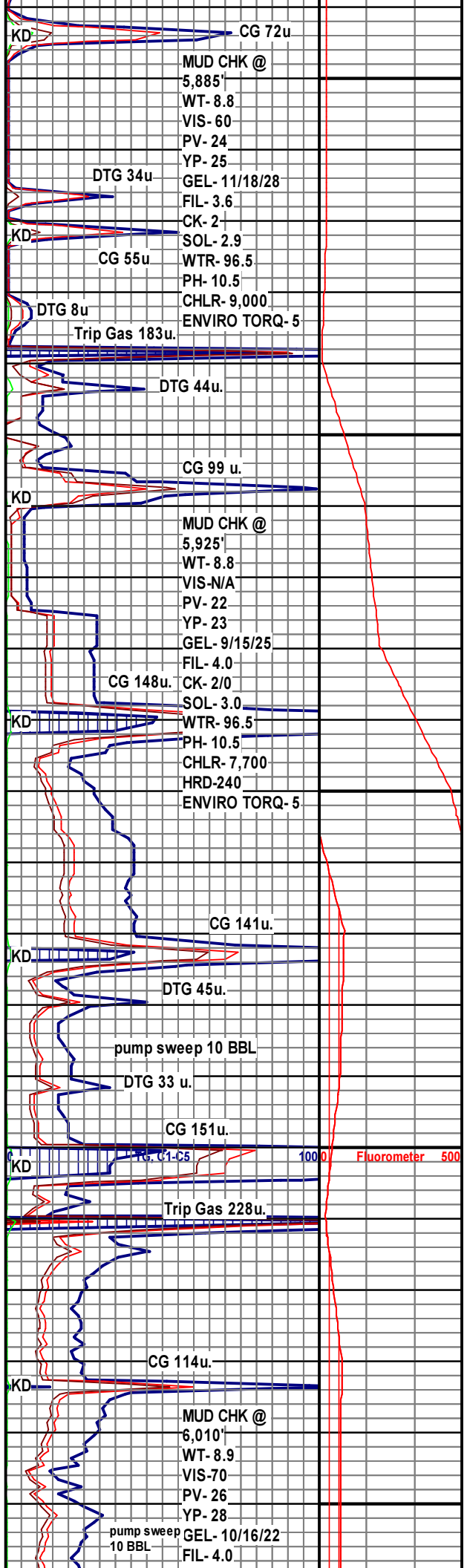
5950

6000

6050

TOOH @ 5,888' DUE TO LOSS OF DIFF PRESS

TOOH @ 6010' FOR NB# 3 SMITH 4.75" 3x18 JETS MOTOR 1.53° RPG 2



5550

5900

5950

6000

6050

WT- 8.8
VIS- 55

MD 6072 TVD 5391.46
INC 86.85 AZ 181.13
VS 712.95

04/21/13

WT- 8.8
VIS- 54

MD 6104 TVD 5393.12
INC 87.2 AZ 181.17
VS 744.91

WT- 8.9
VS- 54

MD 6135 TVD 5394.48
INC 87.76 AZ 180.58
VS: 775.88

WT- 8.8
VIS- 53

MD 6167 TVD 5395.6
INC 88.25 AZ 180.19
VS: 807.86

WT- 8.9
VIS- 52

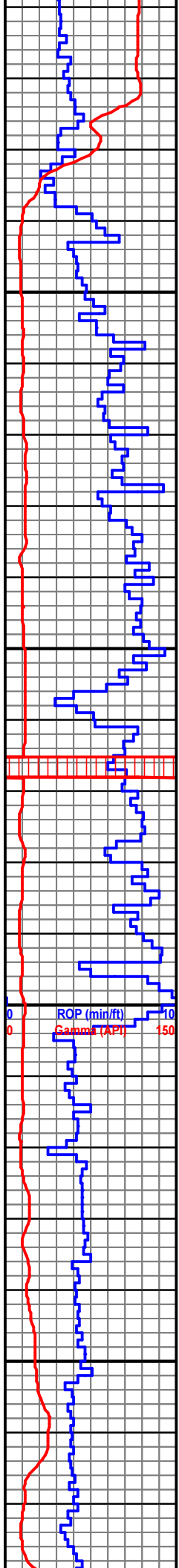
MD 6199 TVD 5396.44
INC 88.74 AZ 180.13
VS: 839.84

04/22/13

MD 6231 TVD 5396.98
INC 89.3 AZ 179.8
VS 871.83

WT- 9.0
VIS- 53

MD 6263 TVD 5397.2
INC 98.93 AZ 179.95
VS 903.82



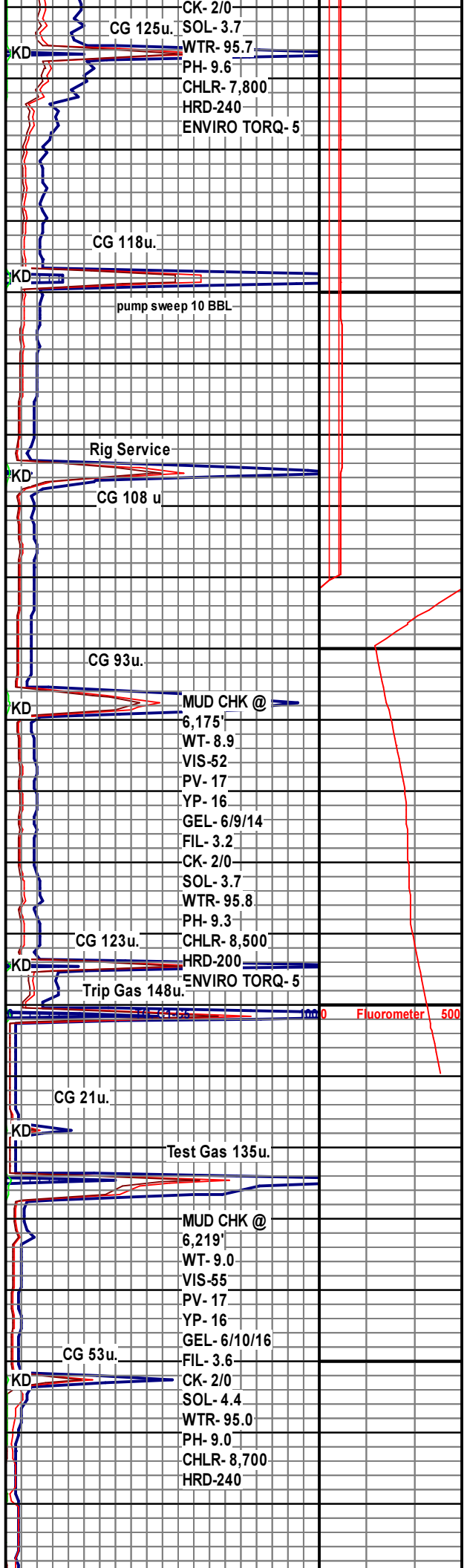
6100

6150

6200

6250

**TOOH FOR NEW BIT #
4 @ 6,201' SMITH
4.75" 3x18 JETS
MOTOR 1.53° RPG 2**



CG 125u.

CK- 2/0
SOL- 3.7
WTR- 95.7
PH- 9.6
CHLR- 7,800
HRD-240
ENVIRO TORQ- 5

CG 118u.

pump sweep 10 BBL

Rig Service

CG 108 u

CG 93u.

MUD CHK @
6,175'
WT- 8.9
VIS- 52
PV- 17
YP- 16
GEL- 6/9/14
FIL- 3.2
CK- 2/0
SOL- 3.7
WTR- 95.8
PH- 9.3

CG 123u.

CHLR- 8,500
HRD-200
ENVIRO TORQ- 5

Trip Gas 148u.

Fluorometer 500

CG 21u.

Test Gas 135u.

MUD CHK @
6,219'
WT- 9.0
VIS- 55
PV- 17
YP- 16
GEL- 6/10/16
FIL- 3.6

CG 53u.

CK- 2/0
SOL- 4.4
WTR- 95.0
PH- 9.0
CHLR- 8,700
HRD-240

MD 6295 TVD 5397.2
INC 90.77 AZ 180.22
VS 935.81

WT- 9.0
VIS- 55

WT- 9.0
VIS- 54

ROP=BLUE
GAMMA=RED

6300

6350

00

DRILLERS TD @
6,362'

ROONEY 2925 3-24H
RE Section 24, T29S,
R25W Ford Co, Ks

SANDRIDGE ENERGY,
INC.

