



**COMPLETION
& PRODUCTION
SERVICES CO.**

**MICRO
LOG**

Company TEXAS COASTAL OPERATING CO. LLC.
Well SCHLEGEL #3
Field WEBS SOUTHWEST
County RUSH
State KANSAS

Company TEXAS COASTAL OPERATING CO. LLC.
Well SCHLEGEL #3
Field WEBS SOUTHWEST
County RUSH State KANSAS

Location: API # : 15-165-22012-0000
2310' FSL & 330' FEL
SEC 17 TWP 19S RGE 20W
Permanent Datum GROUND LEVEL Elevation 2279
Log Measured From KELLY BUSHING 10' A.G.L.
Drilling Measured From KELLY BUSHING
Other Services
CDL/CNL
DIL
Elevation
K.B. 2289
D.F. 2287
G.L. 2279

Date	2/19/13		
Run Number	TWO		
Depth Driller	4568		
Depth Logger	4568		
Bottom Logged Interval	4566		
Top Log Interval	2300		
Casing Driller	8 5/8" @ 1277		
Casing Logger	1277		
Bit Size	7 7/8"		
Type Fluid in Hole	CHEMICAL MUD	CHLORIDES 3800 PPM	
Density / Viscosity	9.3/50		
pH / Fluid Loss	10.5/7.2		
Source of Sample	FLOWLINE		
Rm @ Meas. Temp	.85 @ 70F		
Rmt @ Meas. Temp	.63 @ 70F		
Rmc @ Meas. Temp	1.02 @ 70F		
Source of Rmf / Rmc	MEASUREMENT		
Rm @ BHT	.49 @ 121F		
Time Circulation Stopped	2 HOURS		
Time Logger on Bottom			
Maximum Recorded Temperature	121F		
Equipment Number	4010		
Location	HAYS, KANSAS		
Recorded By	JASON CAPPELLUCCI		
Witnessed By	ROD ANDERSEN		

<<< Fold Here >>>

All interpretations are opinions based on inferences from electrical or other measurements and we cannot and do not guarantee the accuracy or correctness of any interpretation, and we shall not, except in the case of gross or willful negligence on our part, be liable or responsible for any loss, costs, damages, or expenses incurred or sustained by anyone resulting from any interpretation made by any of our officers, agents or employees. These interpretations are also subject to our general terms and conditions set out in our current Price Schedule.

Comments

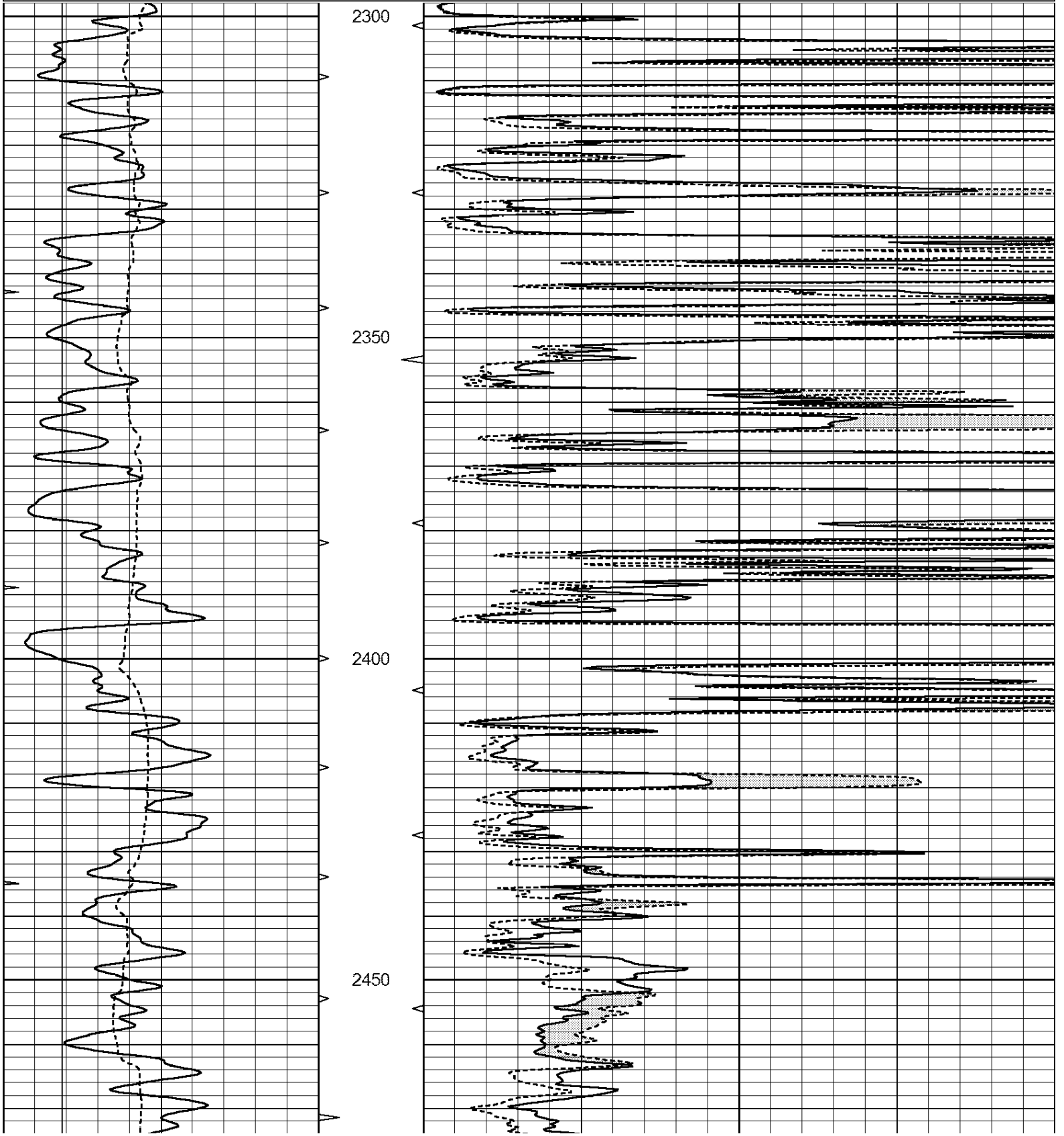
THANK YOU FOR USING NABORS, HAYS, KS. (785) 628-6395
DIRECTIONS:
ALEXANDER, KS. - EAST EDGE (RD 120) 4 S. - W. INTO

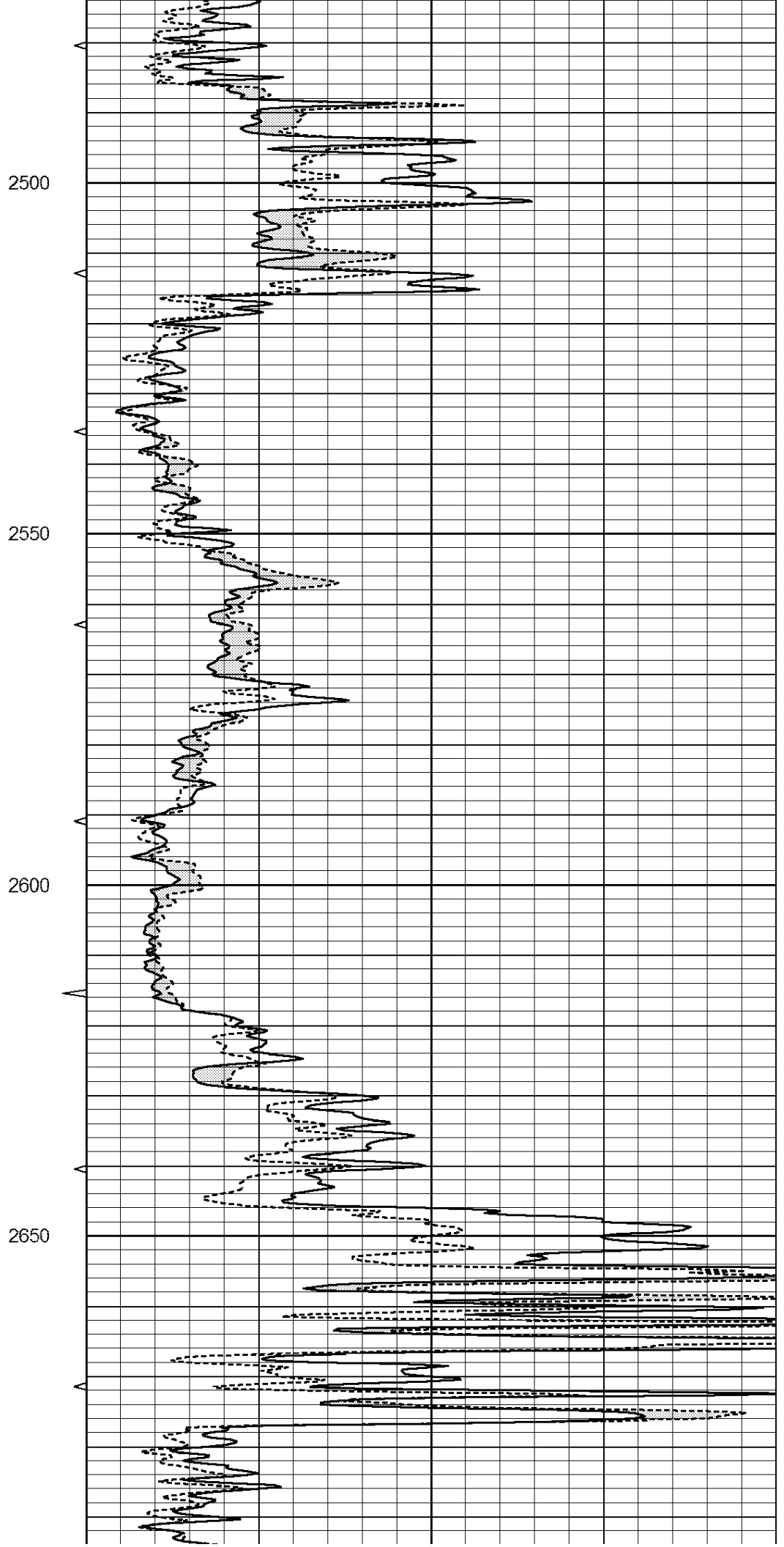
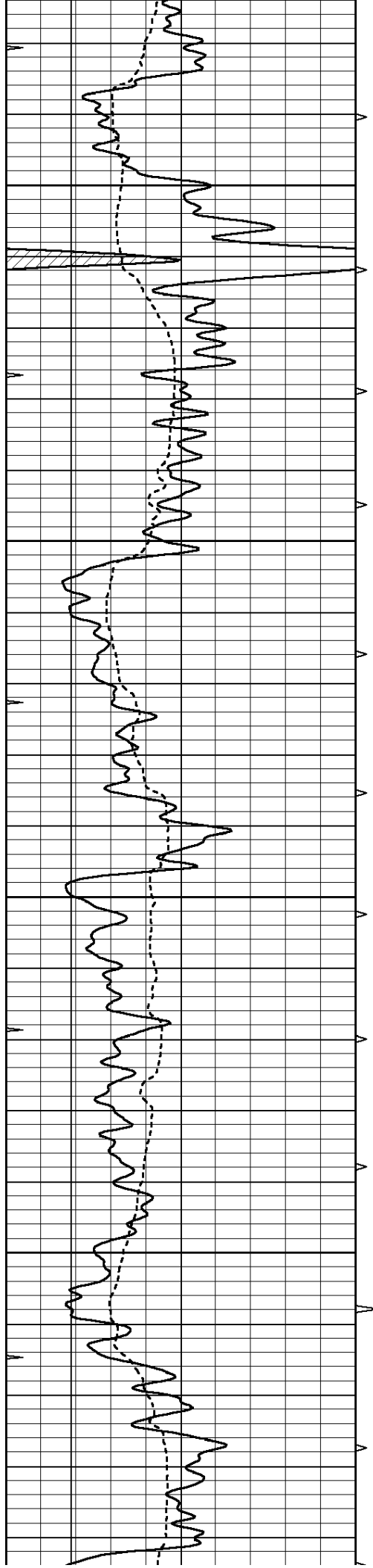


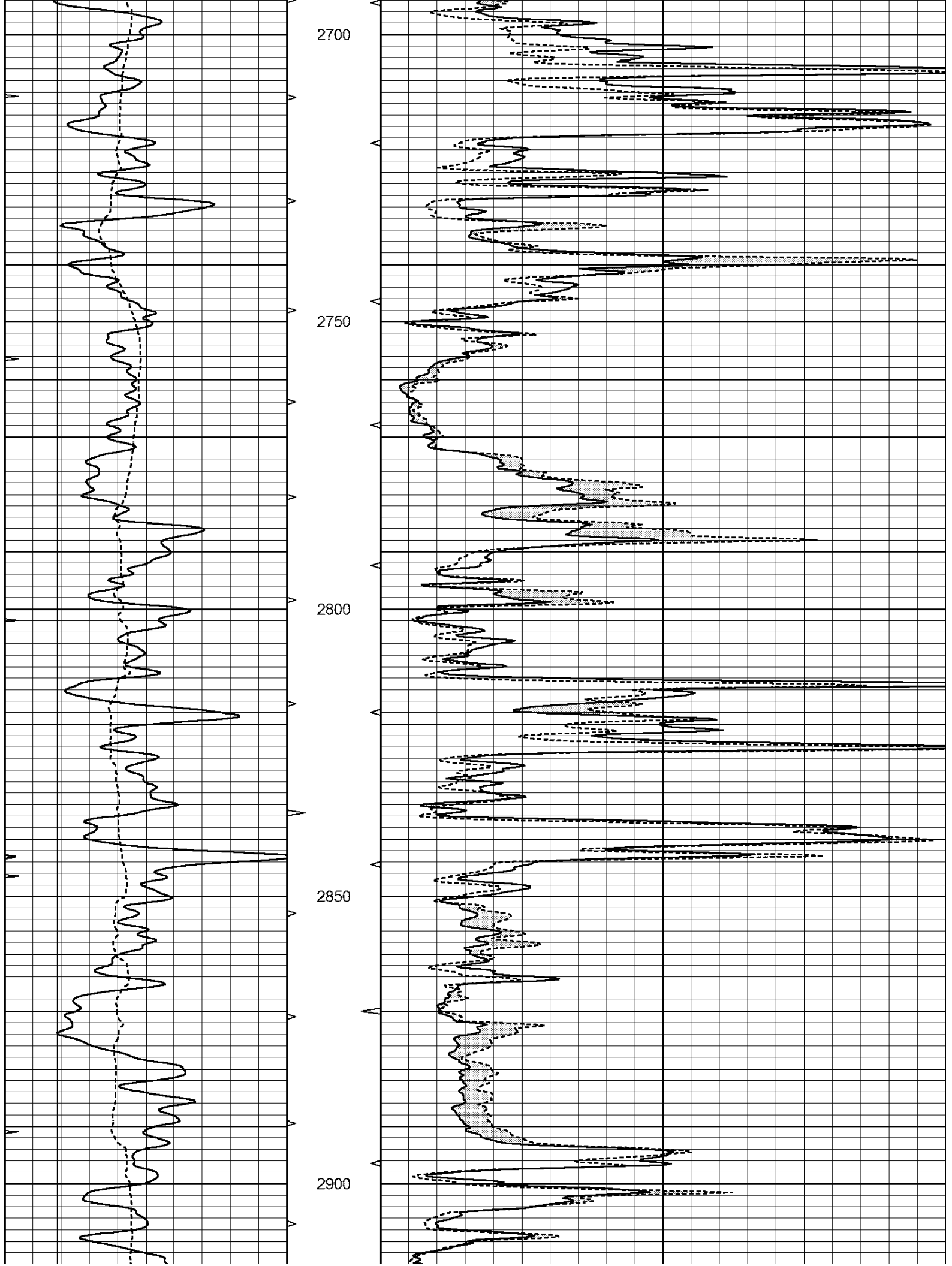
MAIN SECTION

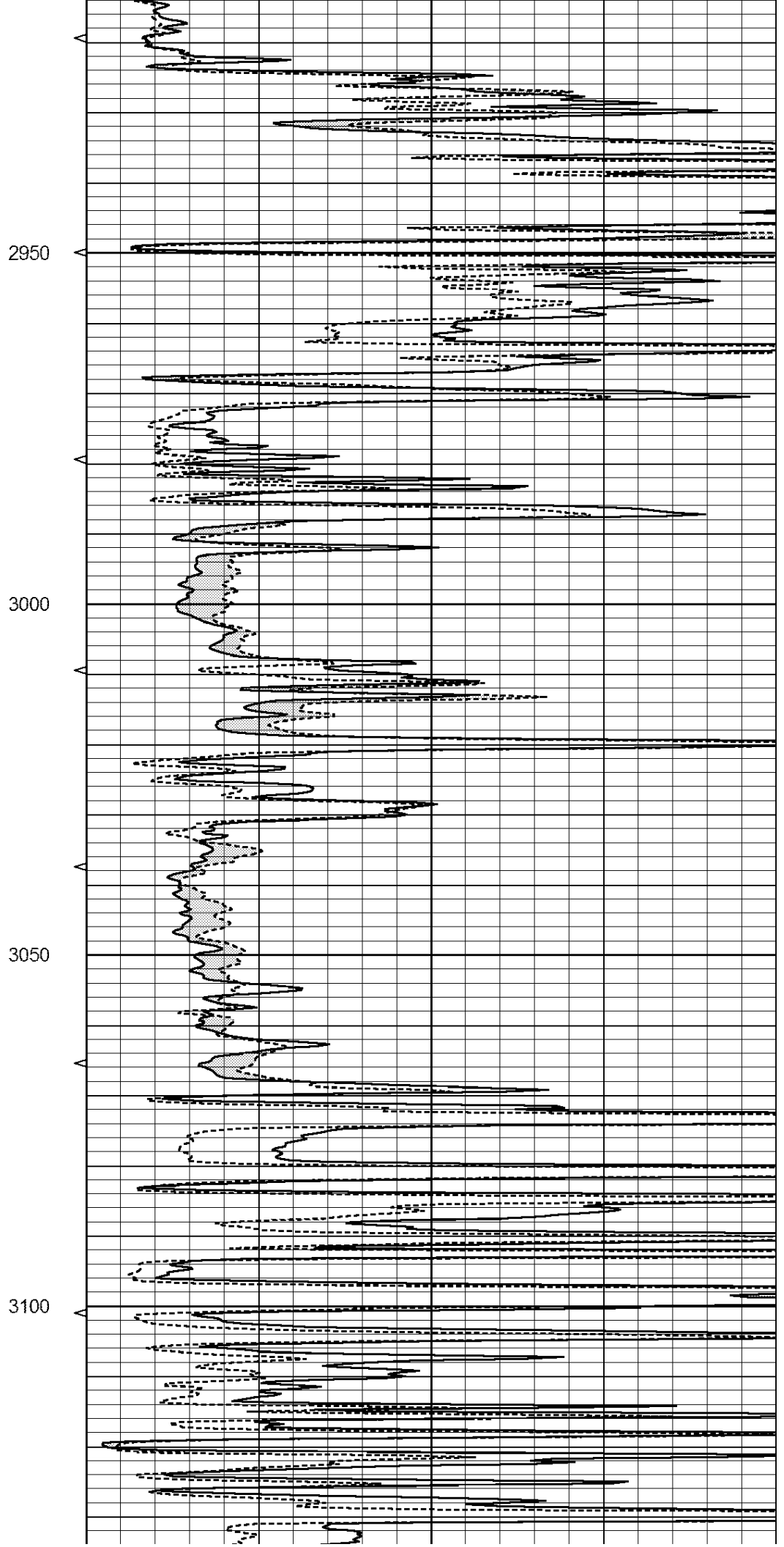
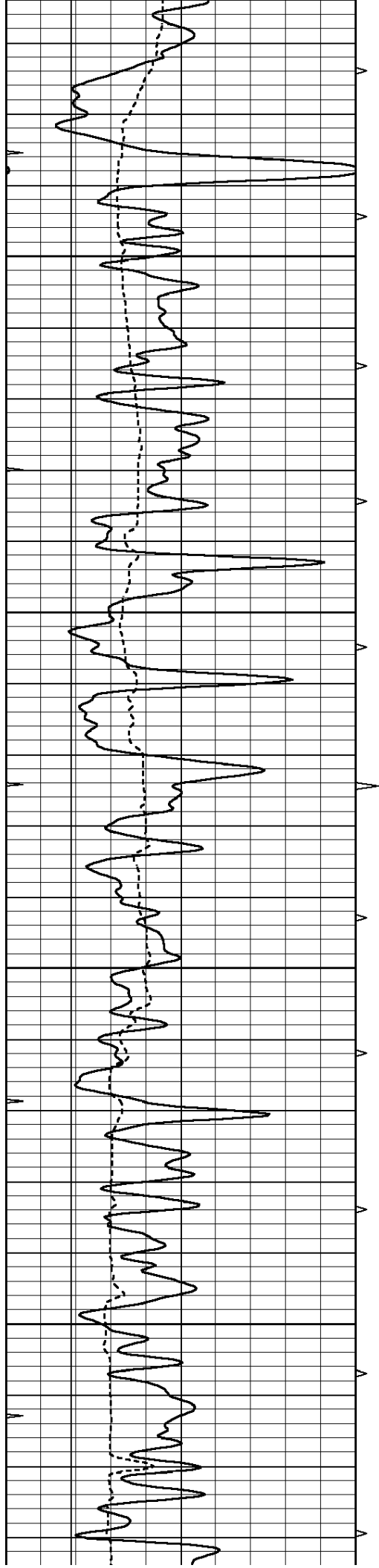
Database File: 010647ddn.db
 Dataset Pathname: pass7.1
 Presentation Format: _micro
 Dataset Creation: Tue Feb 19 05:22:03 2013 by Calc Open-Cased 090629
 Charted by: Depth in Feet scaled 1:240

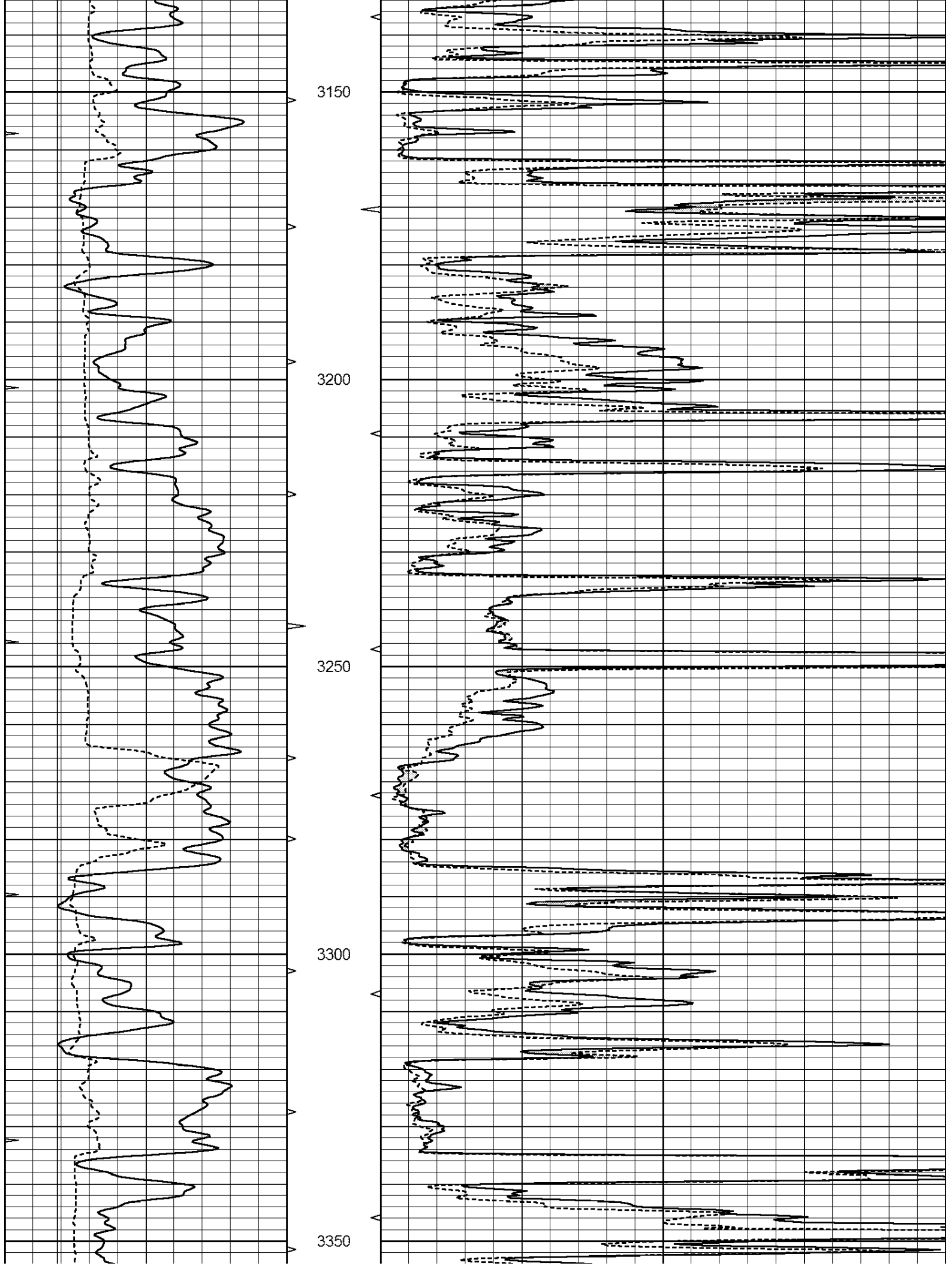
0	GAMMA RAY (GAPI)	150	ABHV	0	MEL1.5 (Ohm-m)	20
6	CALIPER (in)	16	10 (ft3)	0	MEL2.0 (Ohm-m)	20
0	MINMK	20	TBHV			
			0 (ft3)	10		

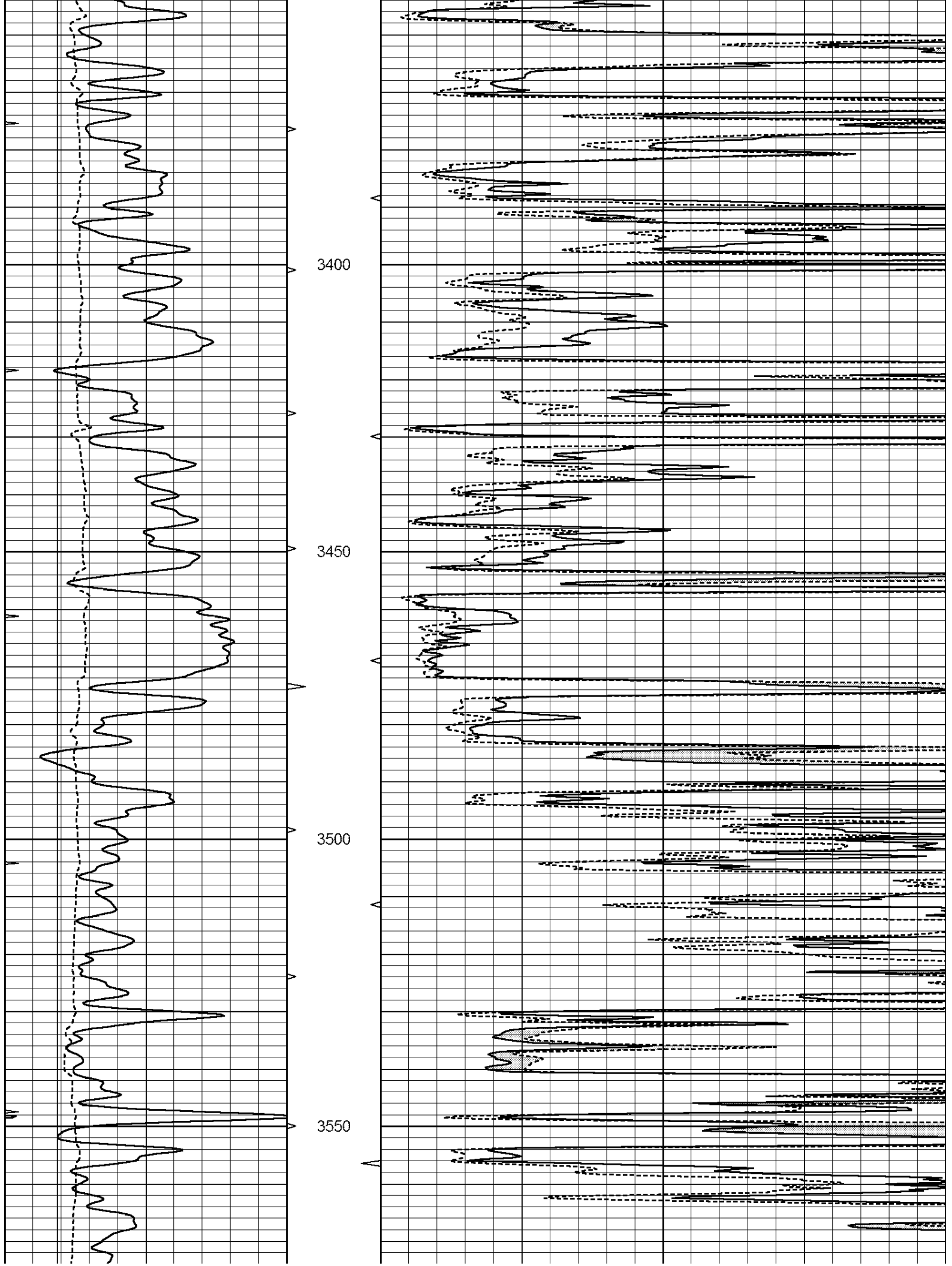




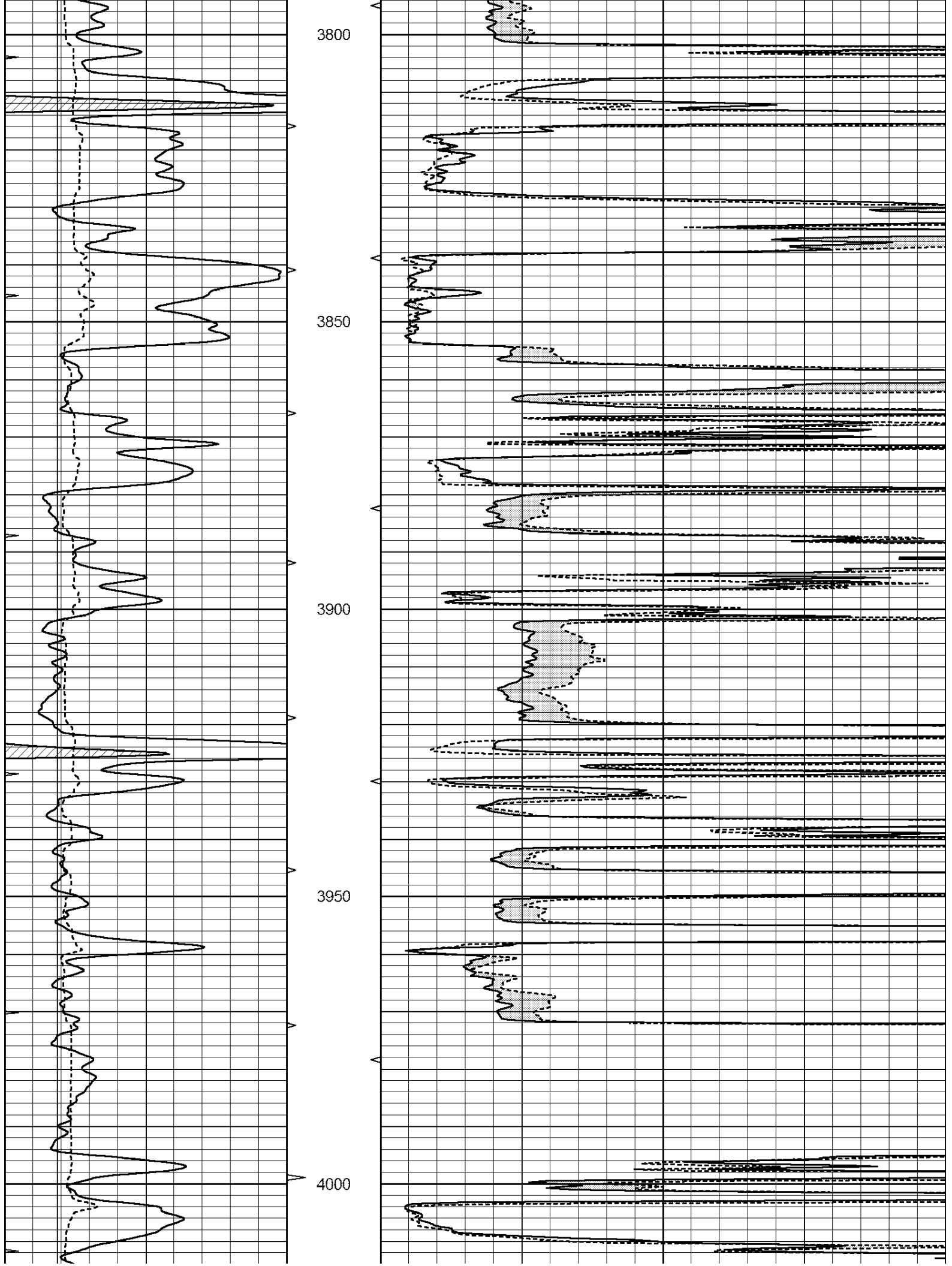


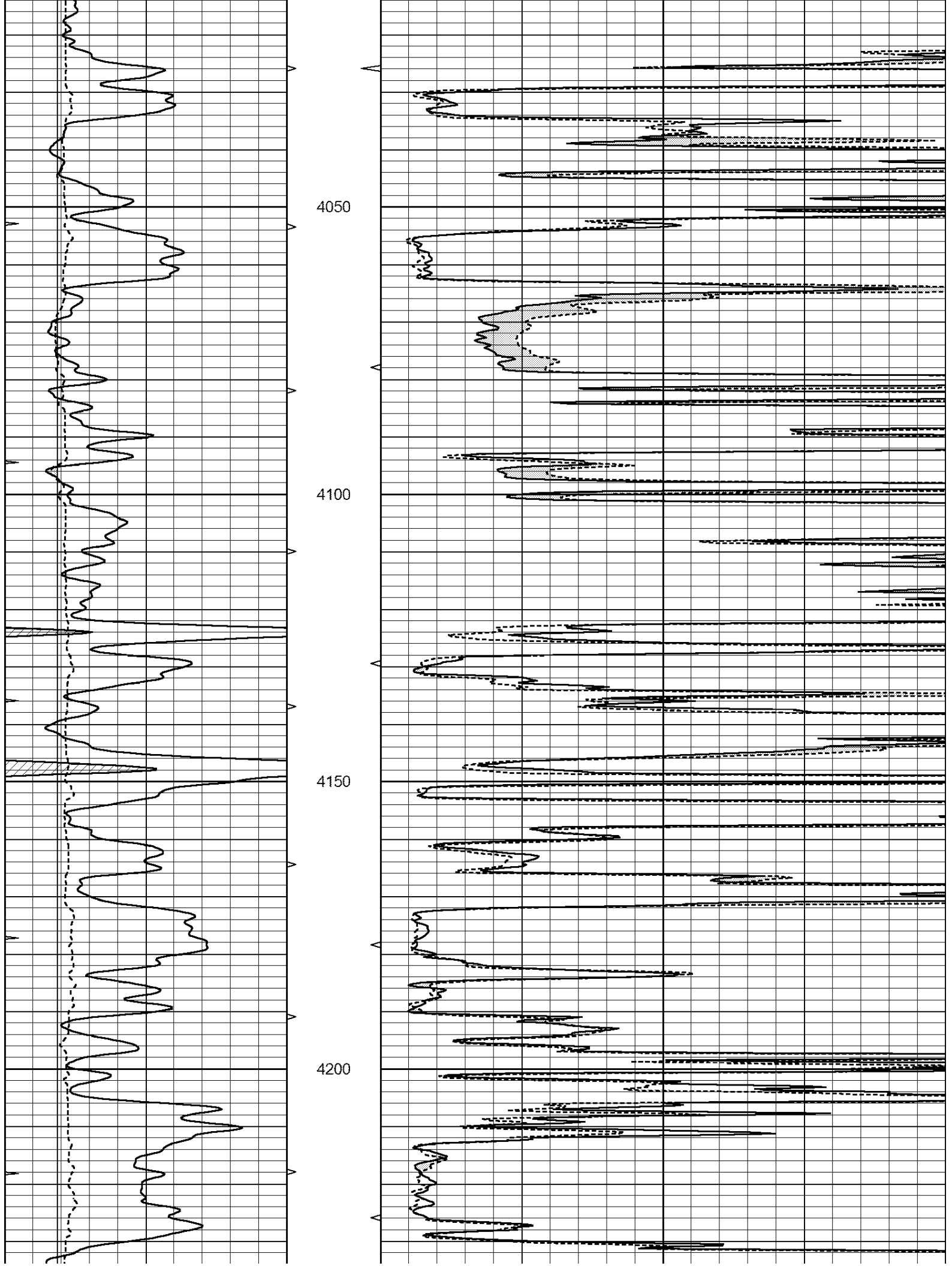


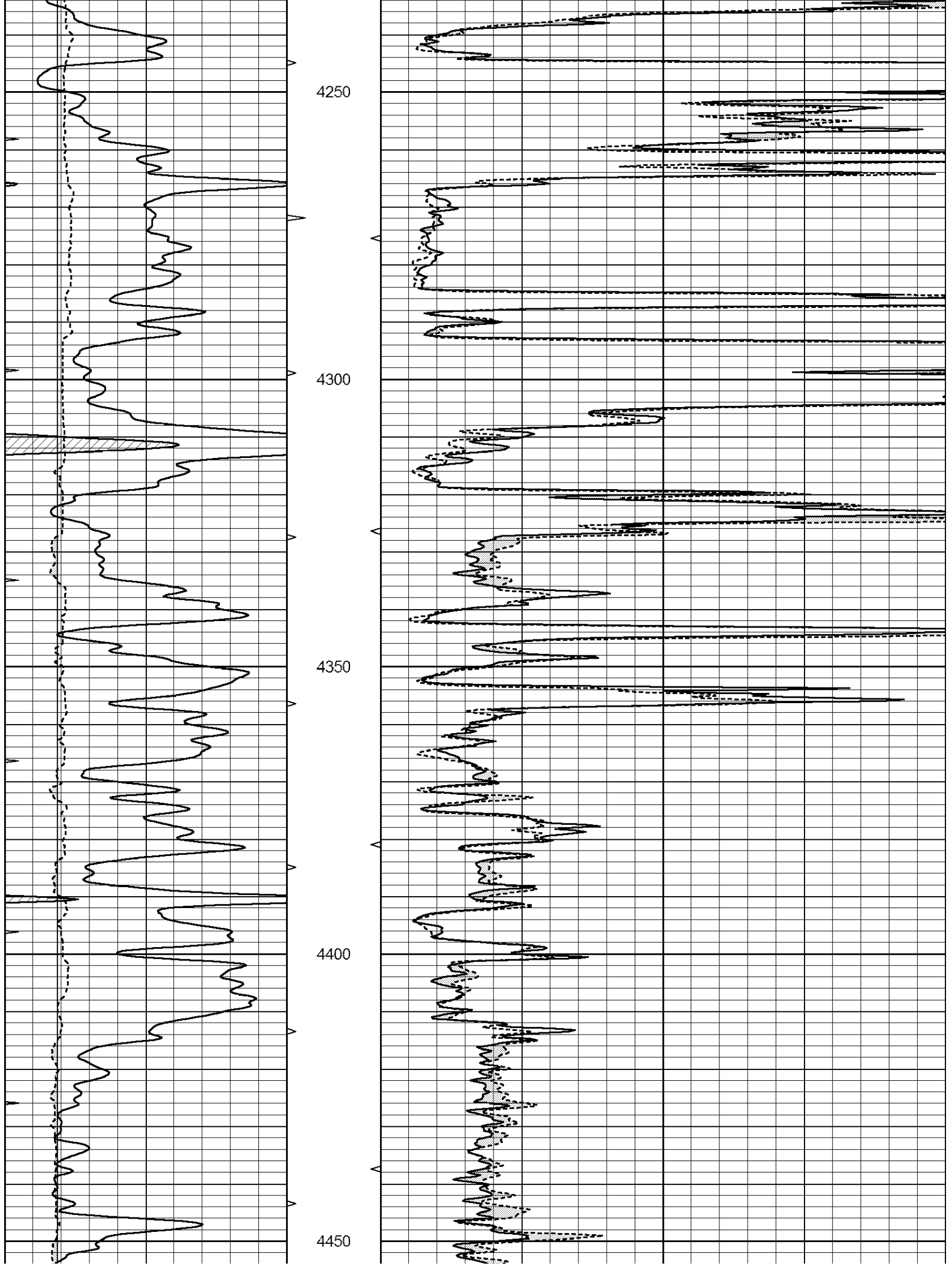


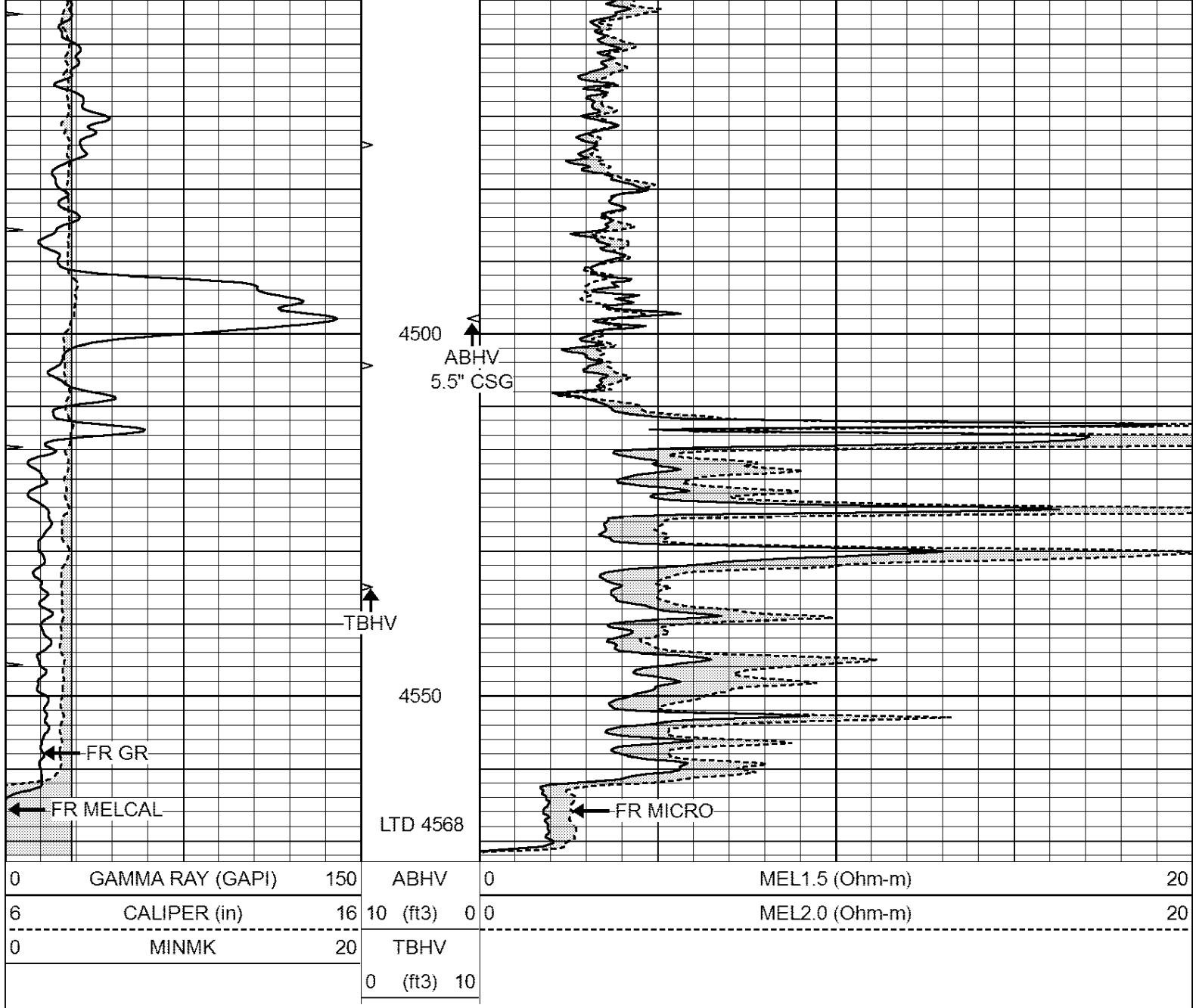








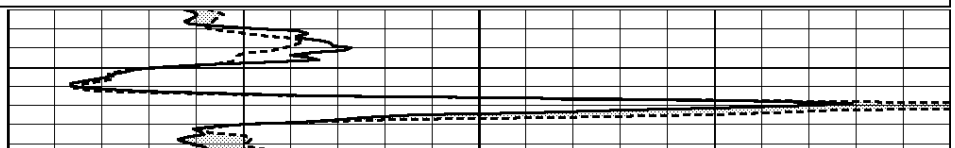


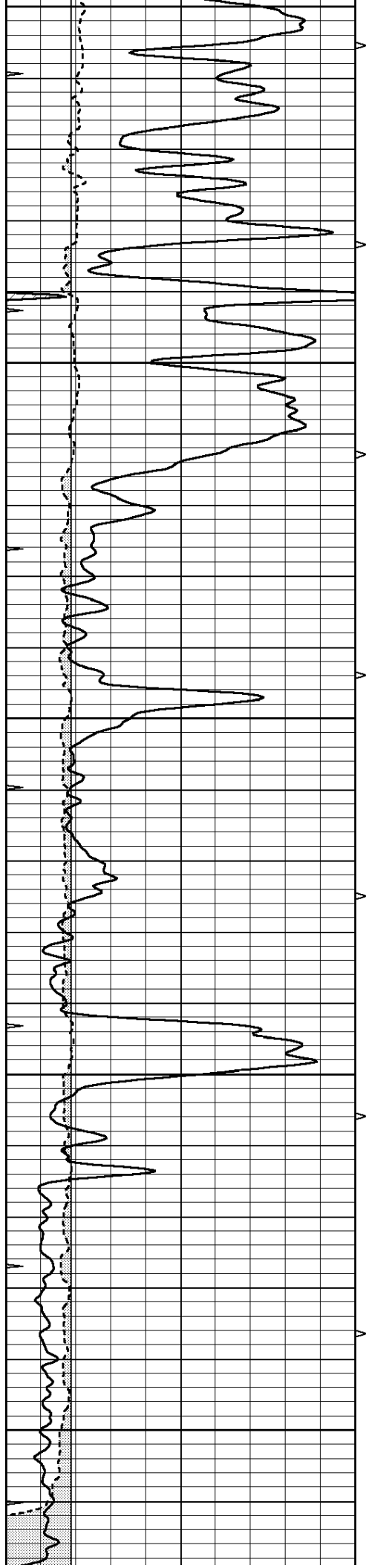


REPEAT SECTION

Database File: 010647ddn.db
 Dataset Pathname: pass6.1
 Presentation Format: _micro
 Dataset Creation: Tue Feb 19 05:07:08 2013 by Calc Open-Cased 090629
 Charted by: Depth in Feet scaled 1:240

0	GAMMA RAY (GAPI)	150	ABHV	0	MEL1.5 (Ohm-m)	20
6	CALIPER (in)	16	10 (ft3)	0	MEL2.0 (Ohm-m)	20
0	MINMK	20	TBHV			
			0 (ft3)	10		





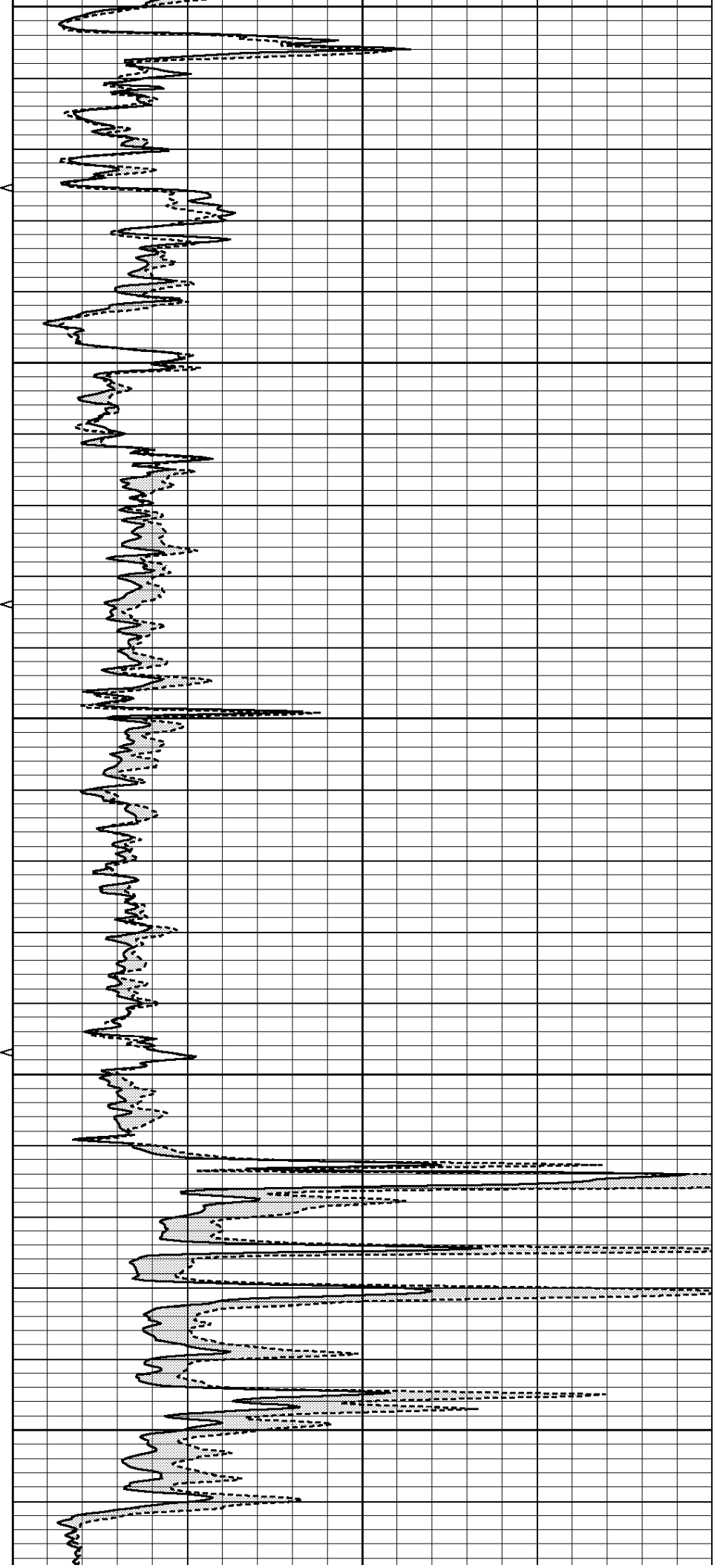
4350

4400

4450

4500

4550



0	GAMMA RAY (GAPI)	150	ABHV	0	MEL1.5 (Ohm-m)	20
6	CALIPER (in)	16	10 (ft3) 0	0	MEL2.0 (Ohm-m)	20
0	MINMK	20	TBHV			
			0 (ft3) 10			

Calibration Report

Database File: 010647ddn.db
 Dataset Pathname: pass6.1
 Dataset Creation: Tue Feb 19 05:07:08 2013 by Calc Open-Cased 090629

MICRO Calibration Report

Serial Number: MICRO3
 Tool Model: PROBE
 Performed: Thu Nov 17 03:06:31 2011

Caliper Calibration: Gain=3.916 Offset=-9.071

	Low Cal	High Cal
References	8.000	14.000
Readings	4.257	5.789

1.5" Calibration: Gain=130.000 Offset=-0.200

	Low Cal	High Cal
References	0.000	20.000
Readings	0.004	0.228

2" Calibration: Gain=130.553 Offset=-0.720

	Low Cal	High Cal
References	0.000	20.000
Readings	0.005	0.175

Gamma Ray Calibration Report

Serial Number: #8
 Tool Model: OPEN
 Performed: Mon Jun 13 16:56:43 2011

Calibrator Value: 150.0 GAPI

Background Reading:	0.0	cps
Calibrator Reading:	175.0	cps

Sensitivity: 0.8371 GAPI/cps