



**COMPLETION
& PRODUCTION
SERVICES CO.**

**COMPENSATED
DENSITY/NEUTRON
LOG**

Company TEXAS COASTAL OPERATING CO. LLC.
Well SCHLEGEL #3
Field WEBS SOUTHWEST
County RUSH
State KANSAS

Company TEXAS COASTAL OPERATING CO. LLC.
Well SCHLEGEL #3
Field WEBS SOUTHWEST
County RUSH State KANSAS

Location: API # : 15-165-22012-0000
2310' FSL & 330' FEL
SEC 17 TWP 19S RGE 20W
Permanent Datum GROUND LEVEL Elevation 2279
Log Measured From KELLY BUSHING 10' A.G.L.
Drilling Measured From KELLY BUSHING
Elevation
K.B. 2289
D.F. 2287
G.L. 2279

Date	2/19/13		
Run Number	ONE		
Depth Driller	4568		
Depth Logger	4568		
Bottom Logged Interval	4544		
Top Log Interval	2300		
Casing Driller	8 5/8" @ 1277		
Casing Logger	1277		
Bit Size	7 7/8"		
Type Fluid in Hole	CHEMICAL MUD	CHLORIDES 3800 PPM	
Density / Viscosity	9.3/50		
pH / Fluid Loss	10.5/7.2		
Source of Sample	FLOWLINE		
Rm @ Meas. Temp	.85 @ 70F		
Rmt @ Meas. Temp	.63 @ 70F		
Rmc @ Meas. Temp	1.02 @ 70F		
Source of Rmf / Rmc	MEASUREMENT		
Rm @ BHT	.49 @ 121F		
Time Circulation Stopped	2 HOURS		
Time Logger on Bottom			
Maximum Recorded Temperature	121F		
Equipment Number	4010		
Location	HAYS, KANSAS		
Recorded By	JASON CAPPELLUCCI		
Witnessed By	ROD ANDERSEN		

<<< Fold Here >>>

All interpretations are opinions based on inferences from electrical or other measurements and we cannot and do not guarantee the accuracy or correctness of any interpretation, and we shall not, except in the case of gross or willful negligence on our part, be liable or responsible for any loss, costs, damages, or expenses incurred or sustained by anyone resulting from any interpretation made by any of our officers, agents or employees. These interpretations are also subject to our general terms and conditions set out in our current Price Schedule.

Comments

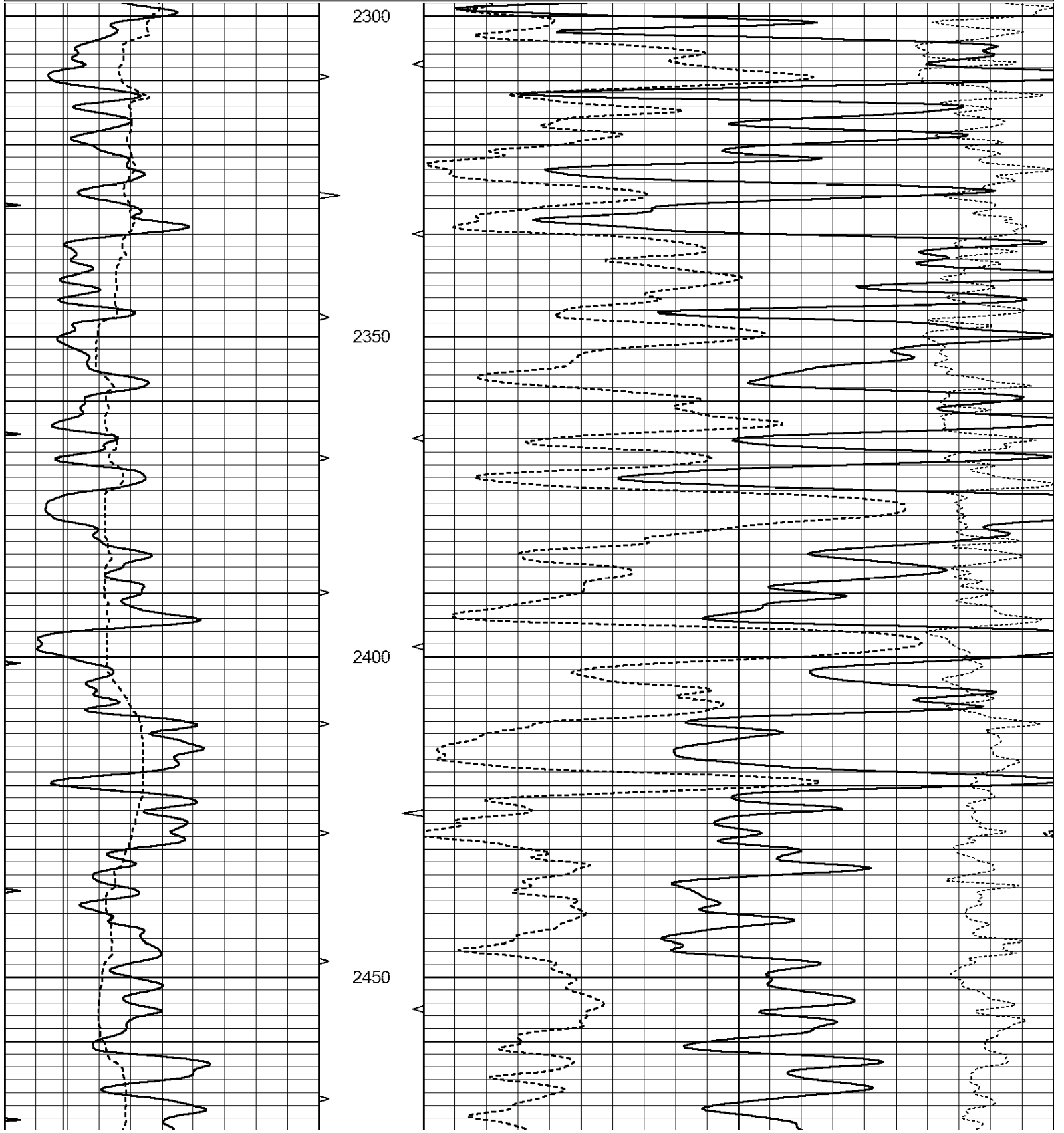
THANK YOU FOR USING NABORS, HAYS, KS. (785) 628-6395
DIRECTIONS:
ALEXANDER, KS. - EAST EDGE (RD 120) 4 S. - W. INTO

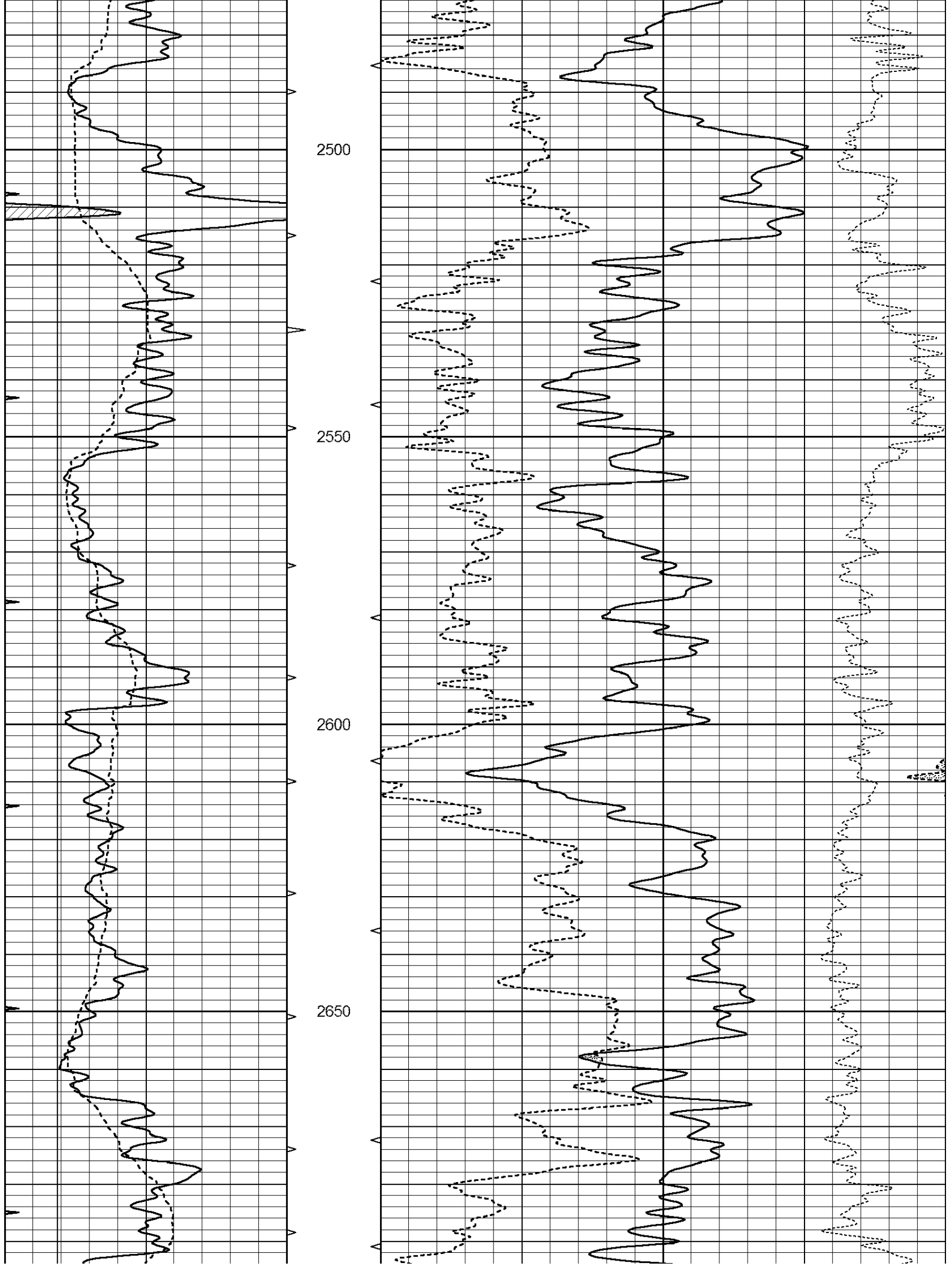


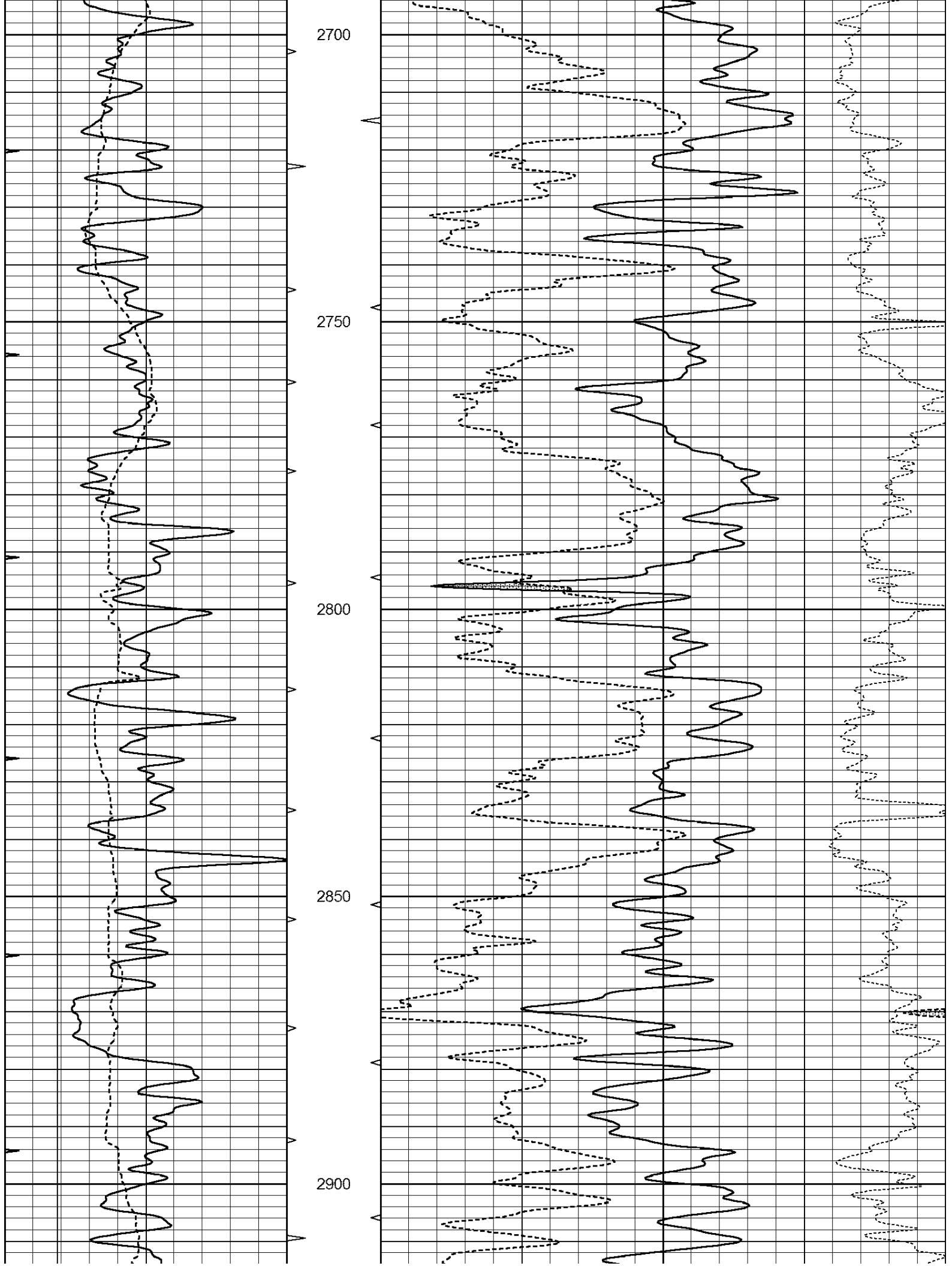
MAIN SECTION

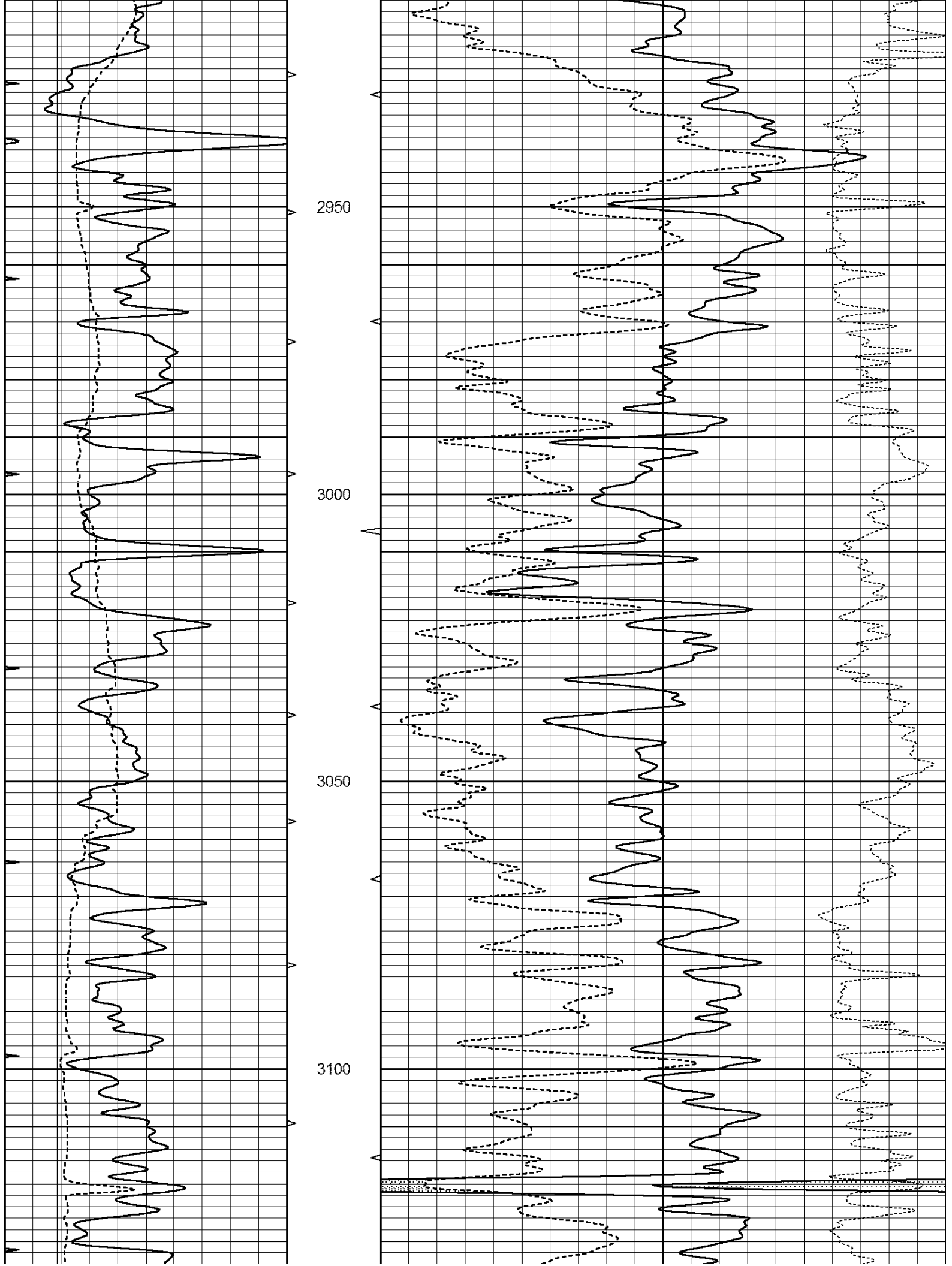
Database File: 010647ddn.db
 Dataset Pathname: pass3.1
 Presentation Format: den_neu
 Dataset Creation: Tue Feb 19 02:38:54 2013 by Calc Open-Cased 090629
 Charted by: Depth in Feet scaled 1:240

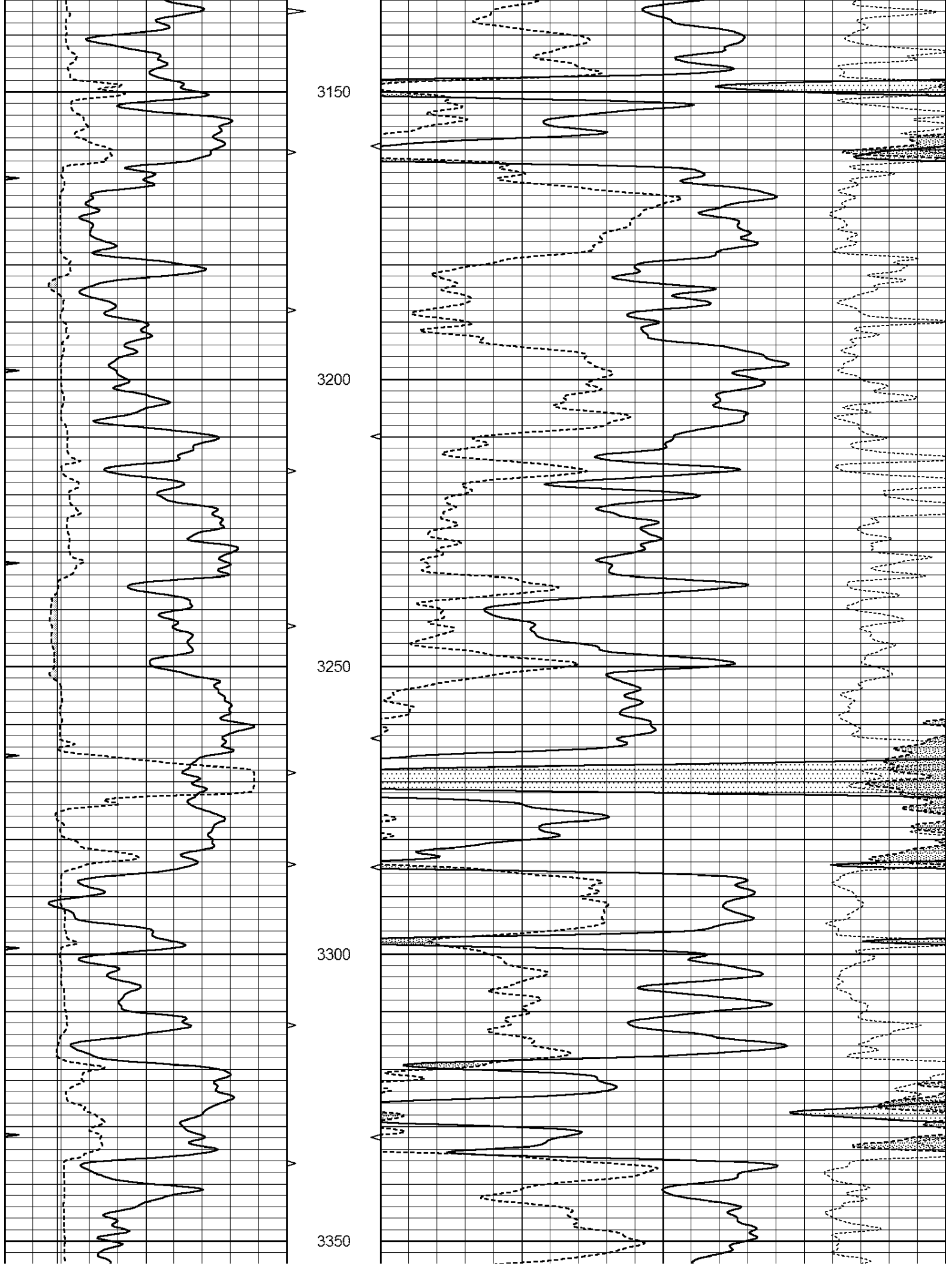
0	GAMMA RAY (GAPI)	150	ABHV	30	COMPENSATED DENSITY (pu)	-10
6	CALIPER (in)	16	10 (ft3)	0 30	COMPENSATED NEUTRON (pu)	-10
0	MINMK	20	TBHV		-0.25 CORRECTION (g/cc)	0.25
			0 (ft3)	10		

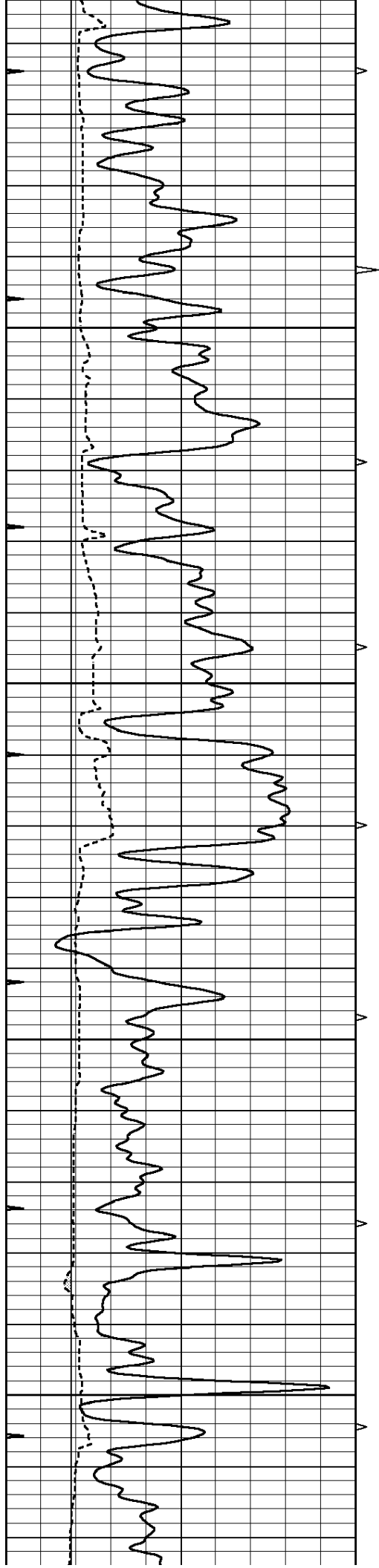










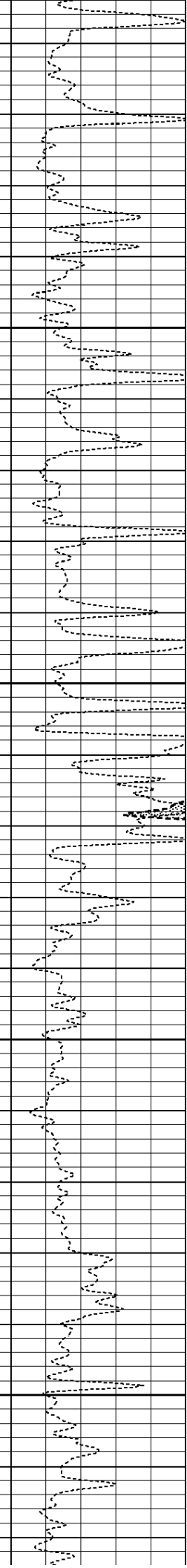
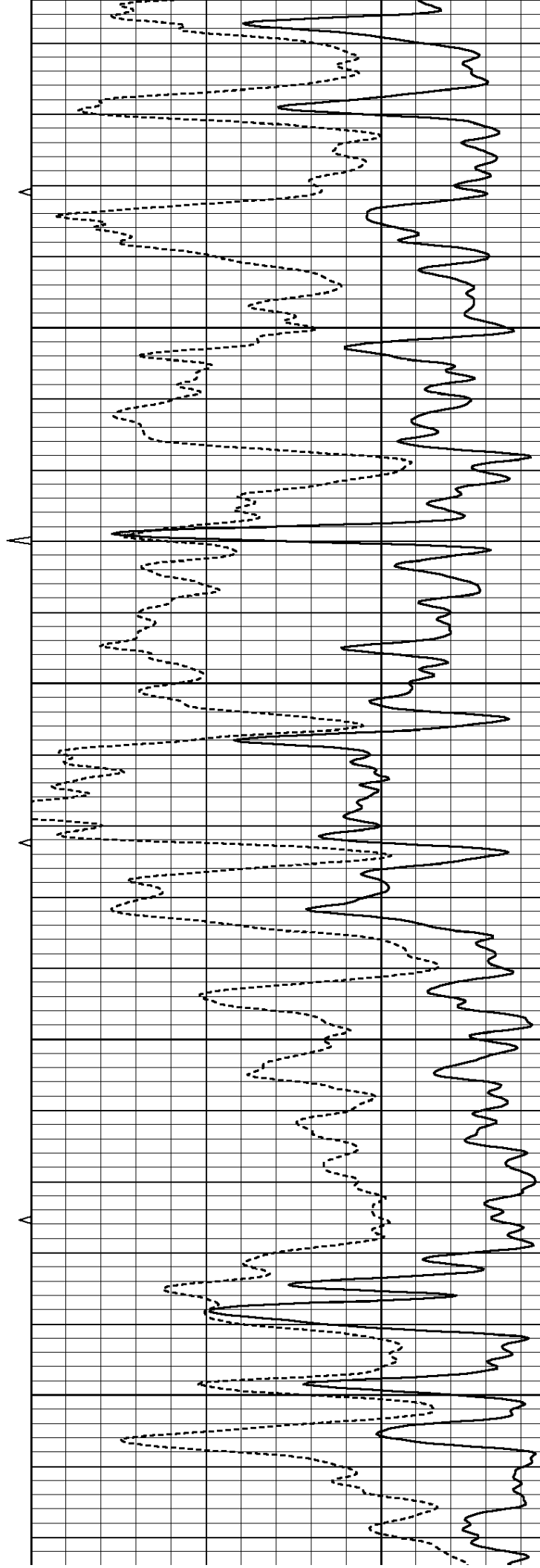


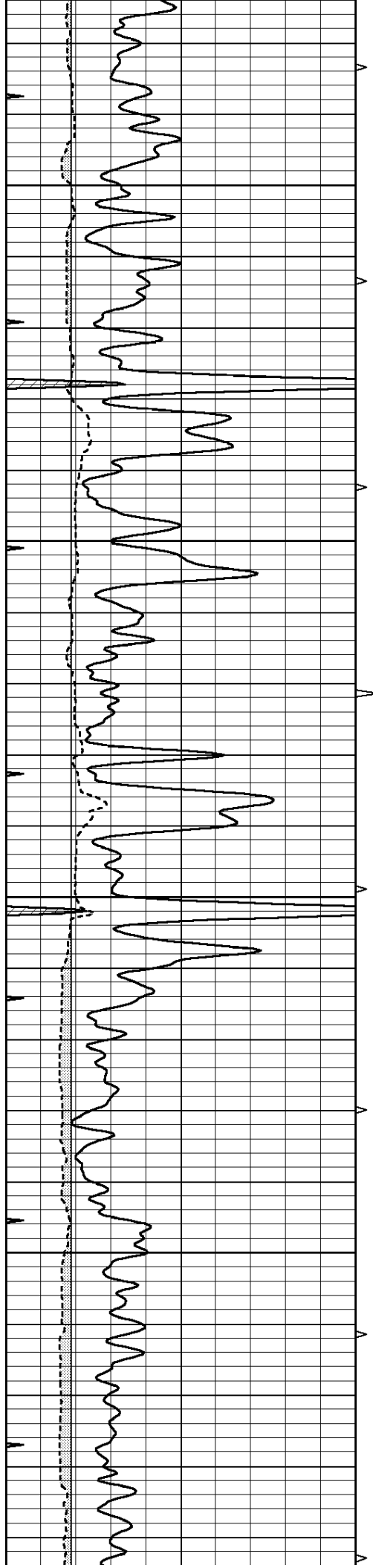
3400

3450

3500

3550



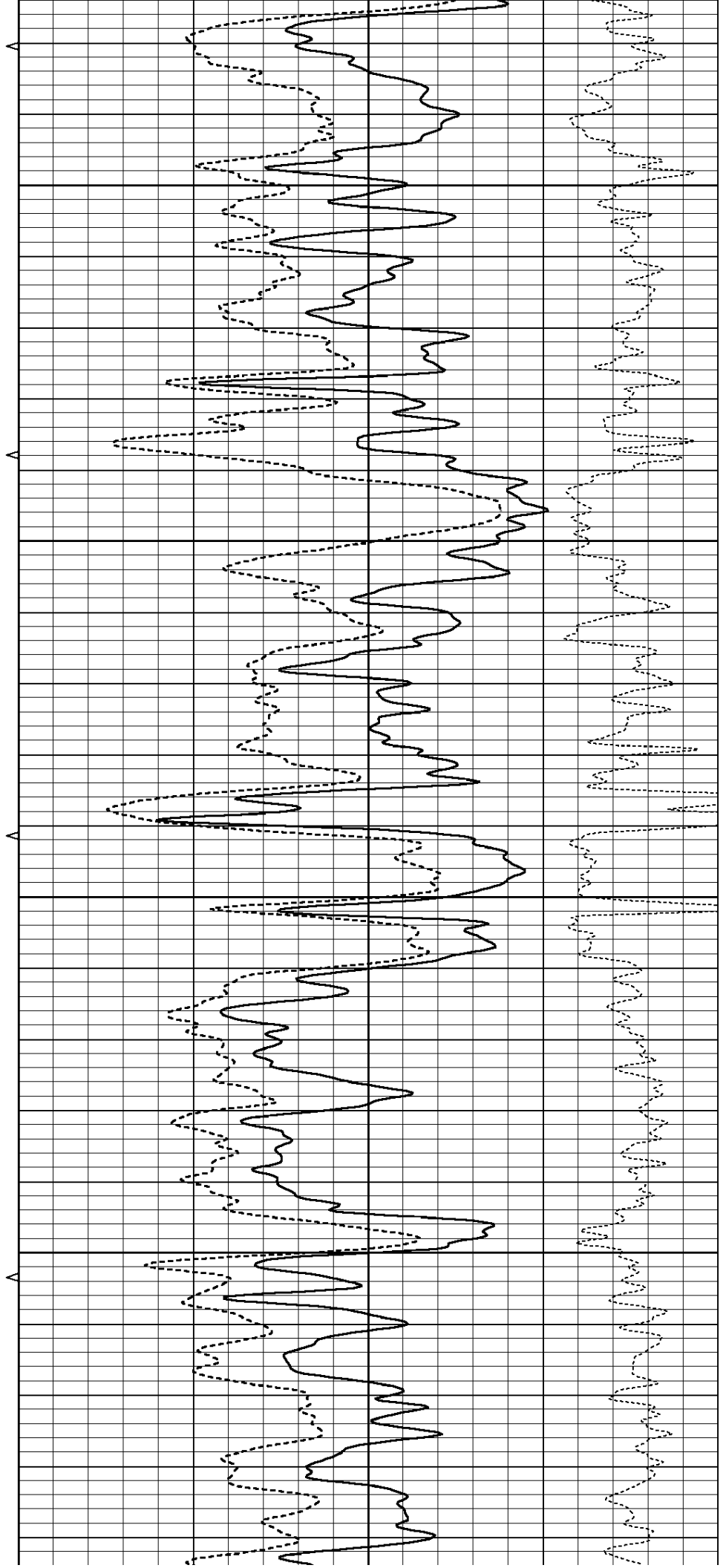


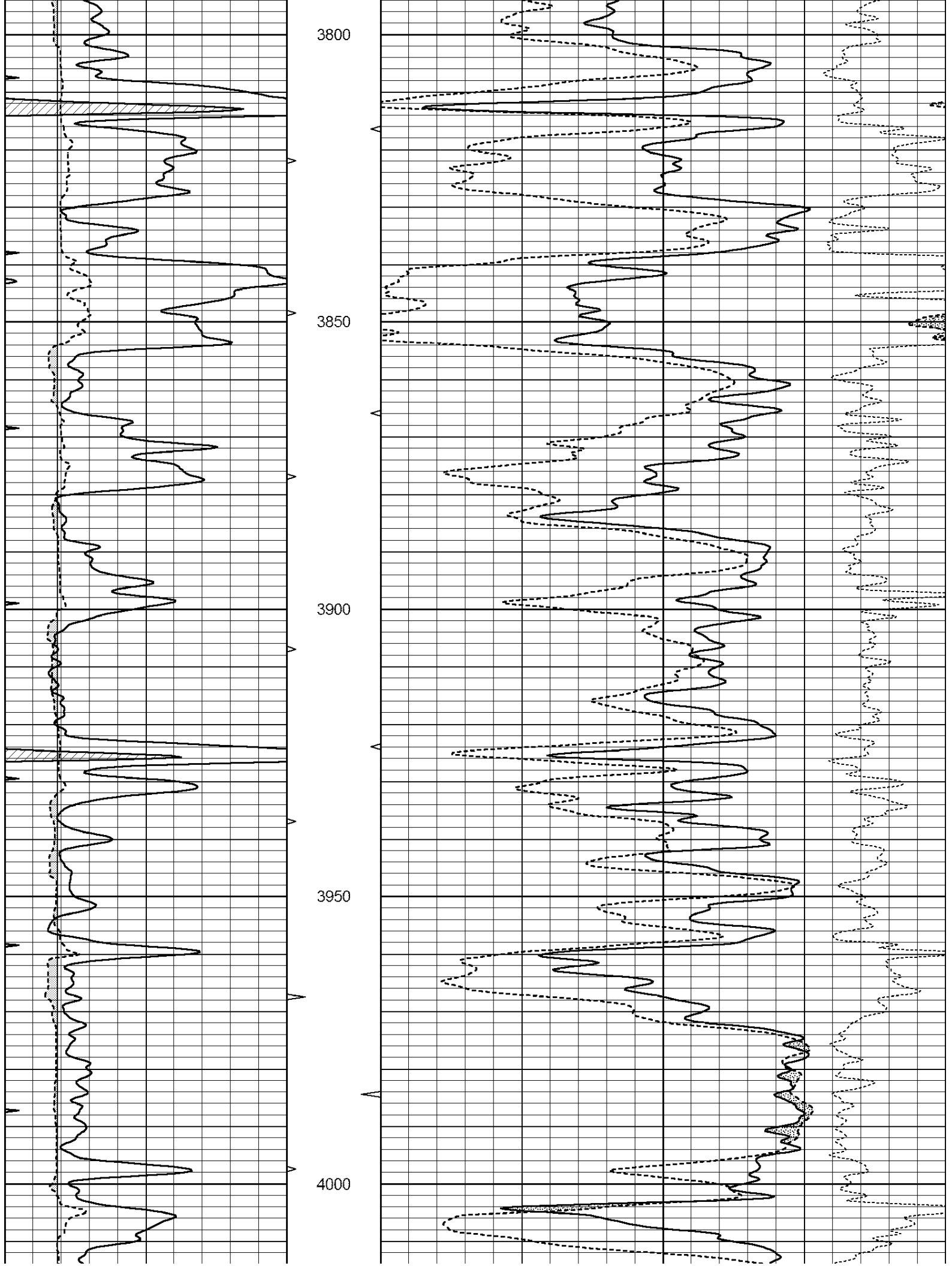
3600

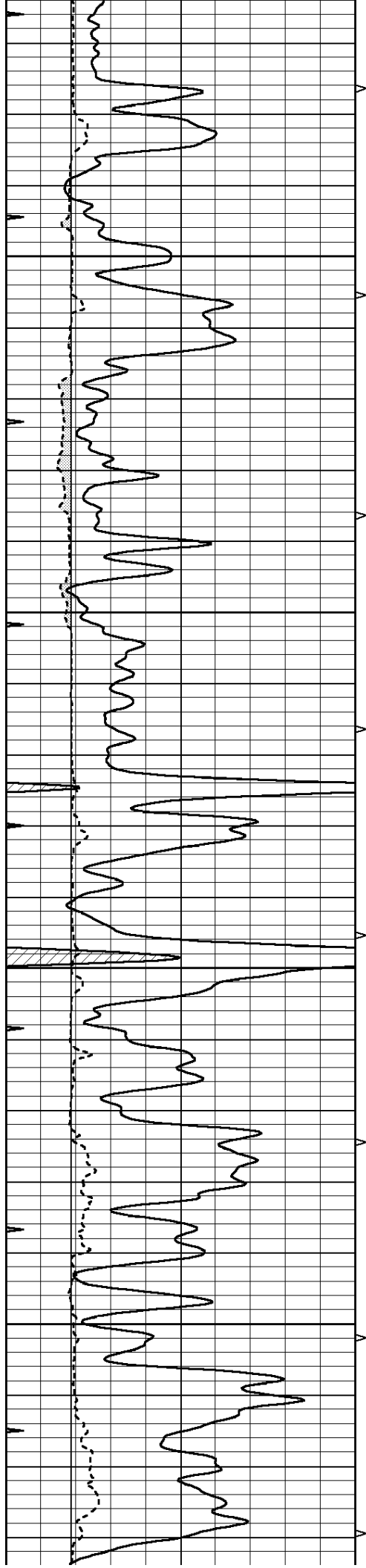
3650

3700

3750





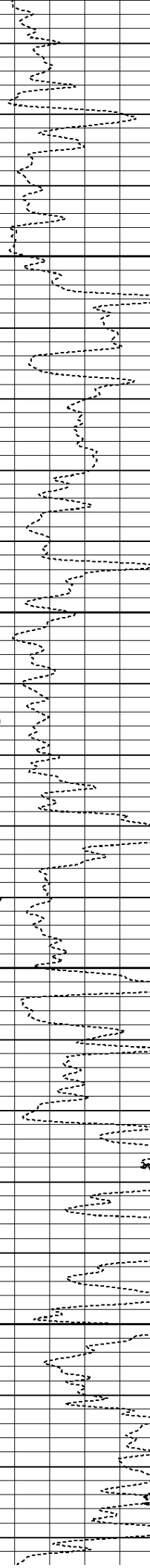
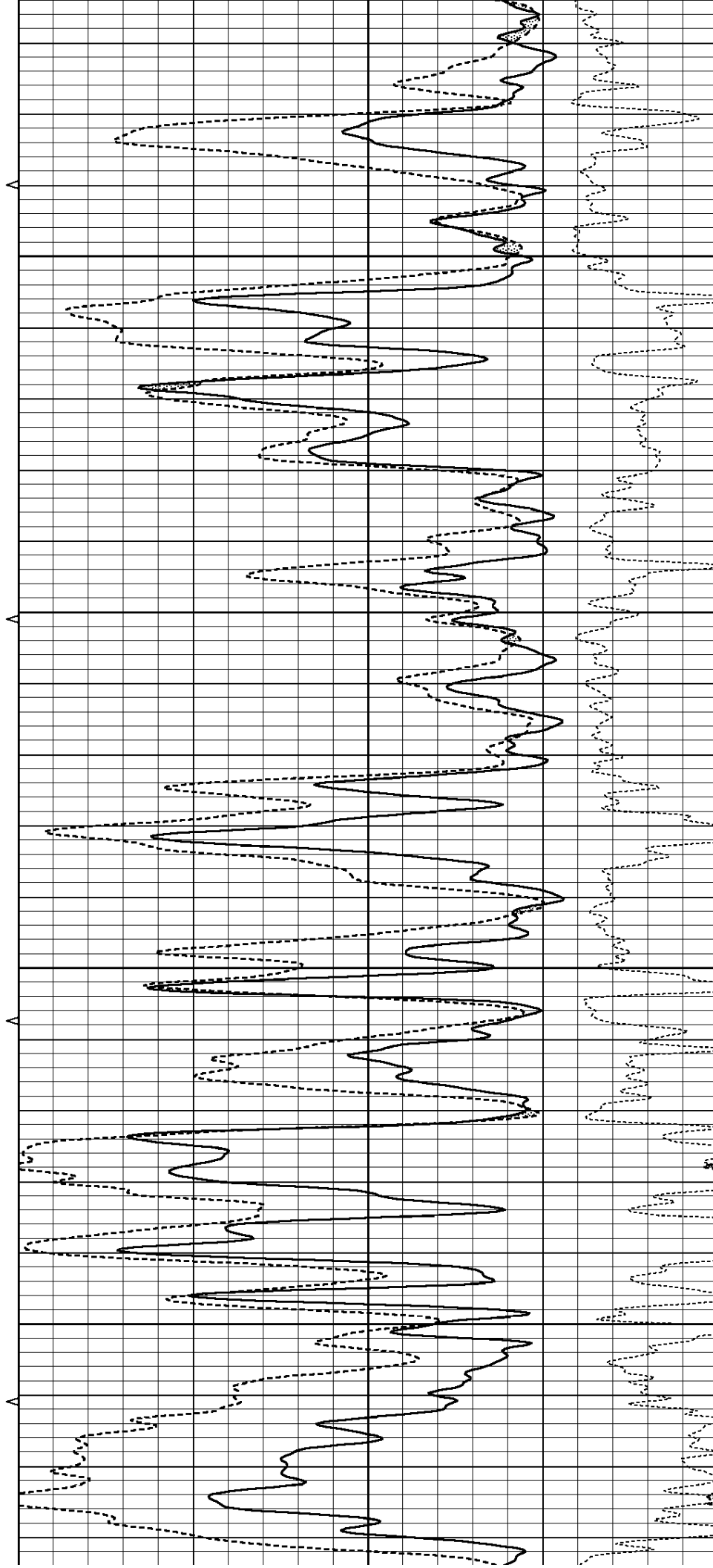


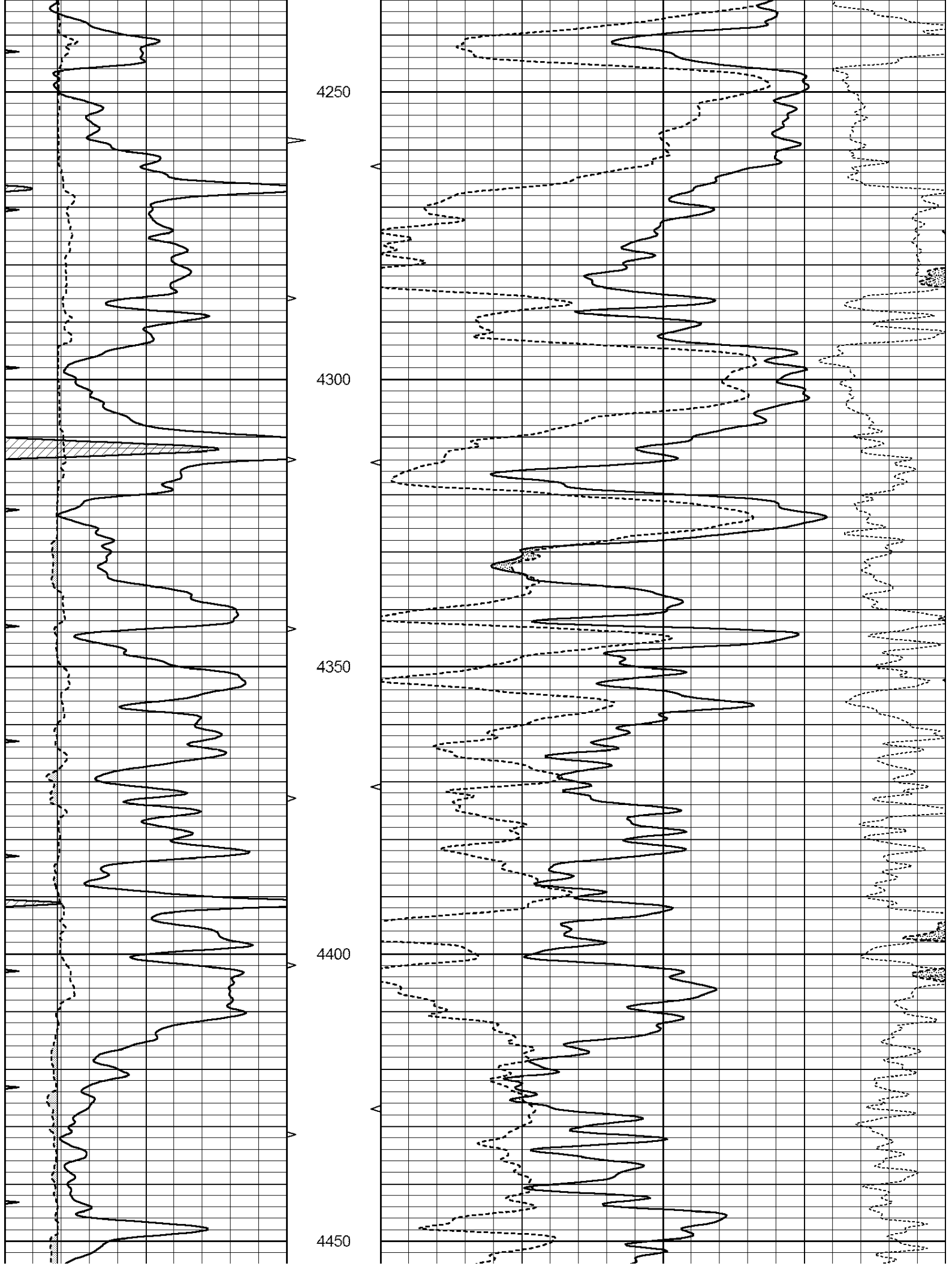
4050

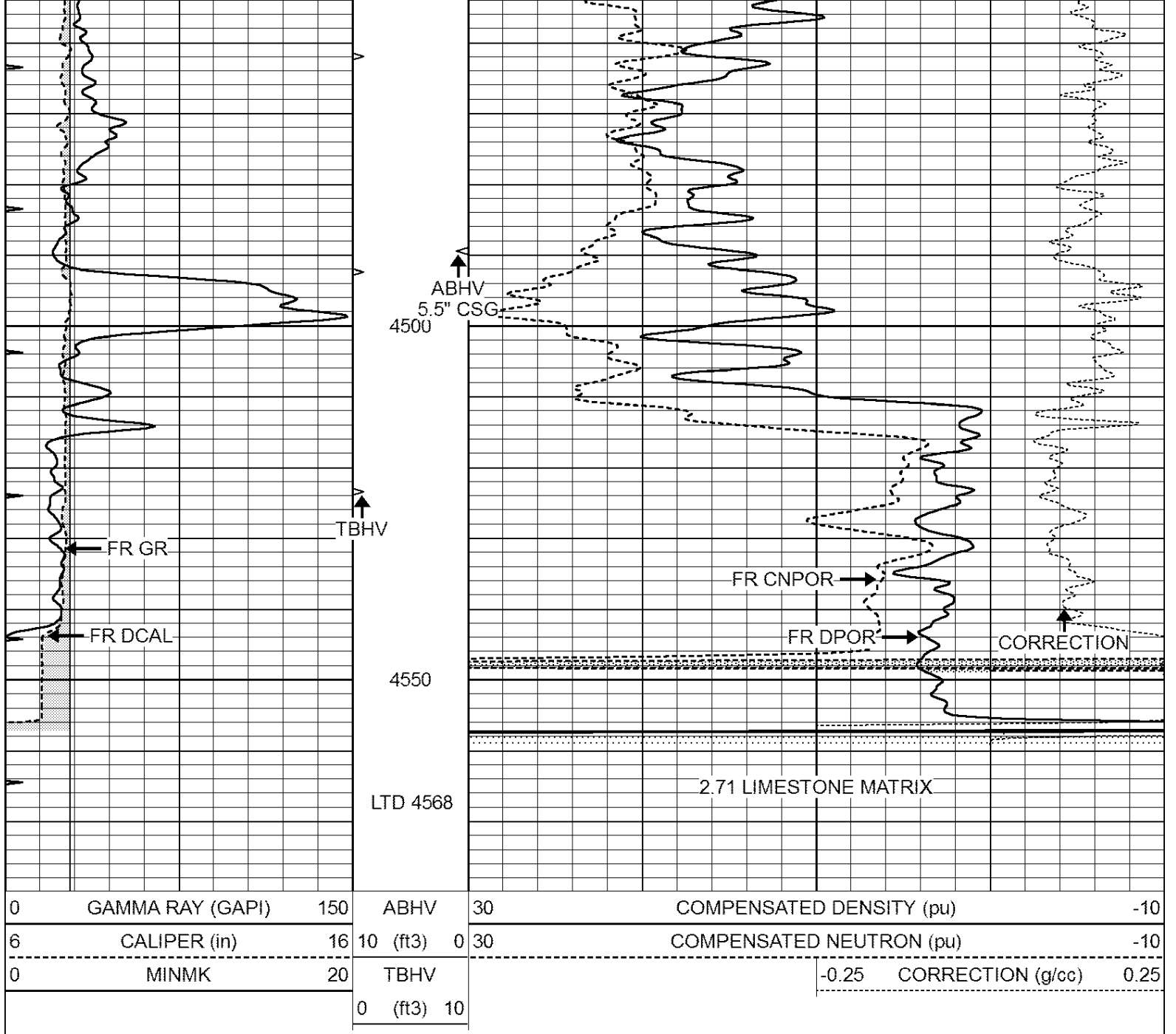
4100

4150

4200





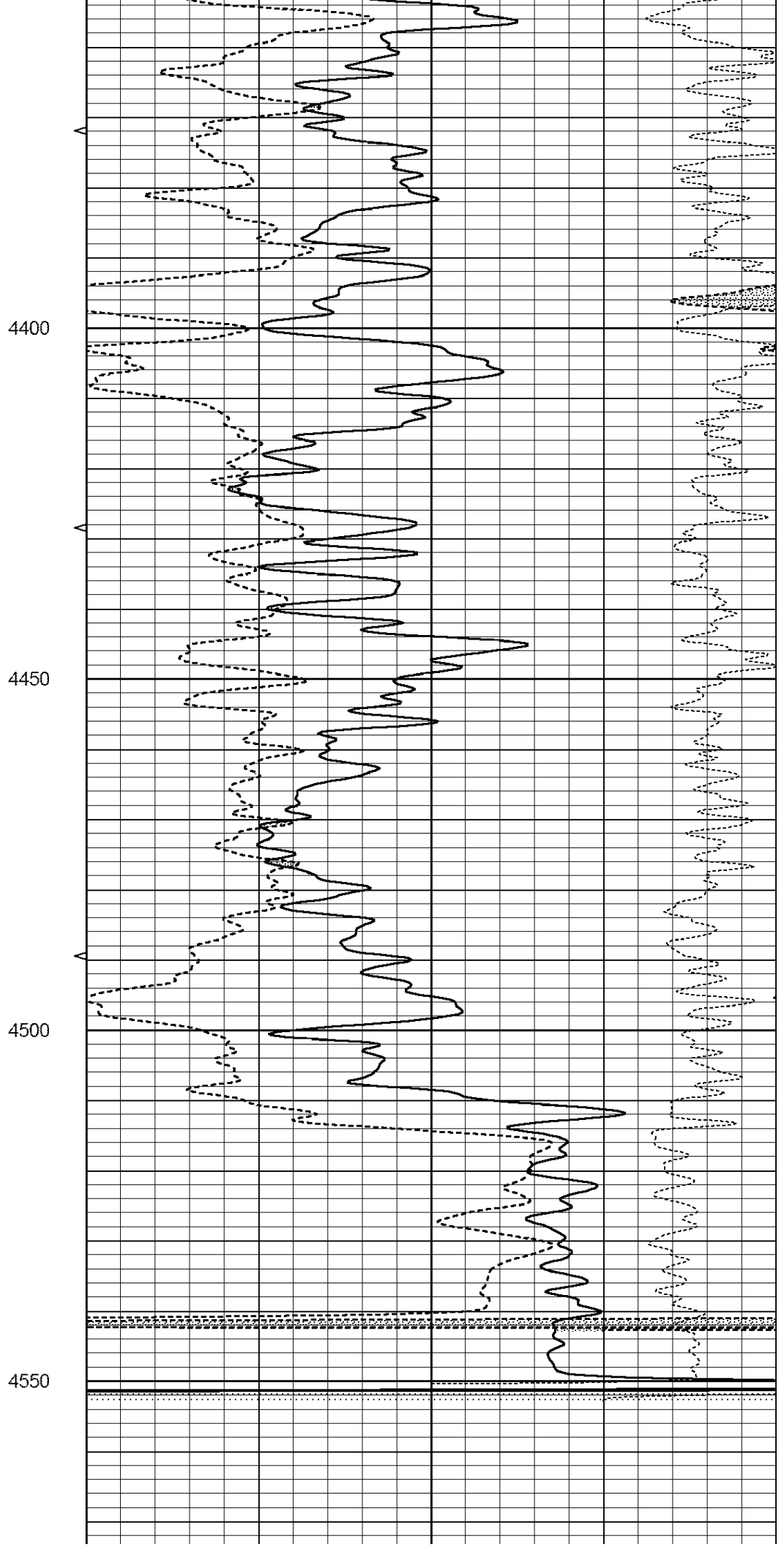
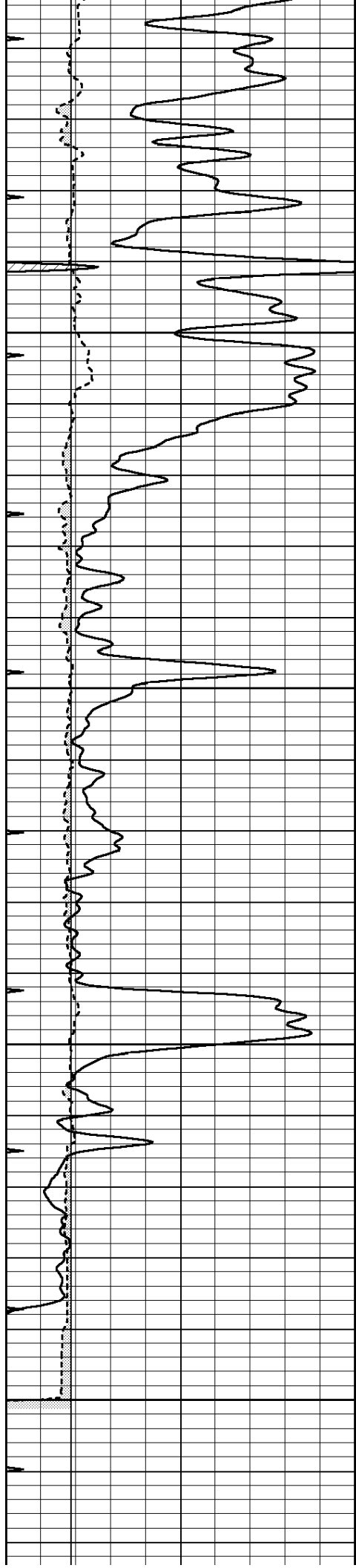


REPEAT SECTION

Database File: 010647ddn.db
 Dataset Pathname: pass2.1
 Presentation Format: den_neu
 Dataset Creation: Tue Feb 19 02:17:58 2013 by Calc Open-Cased 090629
 Charted by: Depth in Feet scaled 1:240

0	GAMMA RAY (GAPI)	150	ABHV	30	COMPENSATED DENSITY (pu)	-10
6	CALIPER (in)	16	10 (ft3)	0 30	COMPENSATED NEUTRON (pu)	-10
0	MINMK	20	TBHV		-0.25 CORRECTION (g/cc)	0.25
			0 (ft3)	10		





0	GAMMA RAY (GAPI)	150	ABHV	30	COMPENSATED DENSITY (pu)			-10	
6	CALIPER (in)	16	10 (ft3)	0	30	COMPENSATED NEUTRON (pu)			-10
0	MINMK	20	TBHV			-0.25	CORRECTION (g/cc)	0.25	
			0 (ft3)	10					

Calibration Report

Database File: 010647ddn.db
 Dataset Pathname: pass2.1
 Dataset Creation: Tue Feb 19 02:17:58 2013 by Calc Open-Cased 090629

Dual Induction Calibration Report

Serial-Model: PROBE8-DILG
 Surface Cal Performed: Fri Aug 01 06:33:19 2008
 Downhole Cal Performed: Mon Jul 28 11:08:27 2008
 After Survey Verification Performed: Mon Jul 28 11:08:27 2008

Surface Calibration

Loop:	Readings				References		Results	
	Air	Loop			Air	Loop	m	b
Deep	0.015	0.648	V	0.000	400.000	mmho/m	632.616	-9.730
Medium	0.029	0.796	V	0.000	464.000	mmho/m	605.049	-17.680
Internal:	Zero	Cal		Zero	Cal		m	b
Deep	0.017	0.657	V	0.000	400.000	mmho/m	625.153	-10.619
Medium	0.016	0.757	V	0.000	464.000	mmho/m	625.992	-9.739

Downhole Calibration

	Readings				References		Results	
	Zero	Cal			Zero	Cal	m'	b'
Deep	0.000	0.000	mmho/m	2.011	405.777	mmho/m	1.000	0.000
Medium	0.000	0.000	mmho/m	7.590	503.393	mmho/m	1.000	0.000
LL3		7.500	V		1500.000	Ohm-m		
		0.000	V		20.000	Ohm-m		
		-7.200	V		3800.000	mmho-m		

After Survey Verification

	Readings				Targets		Results	
	Zero	Cal			Zero	Cal	m'	b'
Deep	0.000	0.000	mmho/m	0.000	0.000	mmho/m	0.000	0.000
Medium	0.000	0.000	mmho/m	0.000	0.000	mmho/m	0.000	0.000
LL3		1.000	Ohm-m		1.000	Ohm-m		
		0.000	Ohm-m		0.000	Ohm-m		
		1.000	mmho-m		1.000	mmho-m		

Compensated Density Calibration Report

Serial-Model: GEAR3-GEARHART
 Source / Verifier: 143 / 143
 Master Calibration Performed: Fri Jan 04 15:48:16 2013
 Before Survey Verification Performed:
 After Survey Verification Performed:

Master Calibration

	Density		Far Detector	Near Detector	
Magnesium	1.710	g/cc	935.36	501.55	cps
Aluminum	2.580	g/cc	209.32	357.01	cns

Spine Angle = 77.21

Density/Spine Ratio = 0.567

	Size		Reading	
Small Ring	8.00	in	4.29	V
Large Ring	14.00	in	6.24	V

Before Survey Verification

	Target		Measured	
		g/cc		g/cc
		g/cc		g/cc
		g/cc		g/cc

After Survey Verification

	Target		Measured	
		g/cc		g/cc
		g/cc		g/cc
		g/cc		g/cc

Compensated Neutron Calibration Report

Serial Number: 6I
Tool Model: G

CALIBRATION

Detector	Readings		Target		Normalization
Short Space	1.00	cps	1.00	cps	1.0000
Long Space	1.00	cps	1.00	cps	1.0000

PRE-SURVEY VERIFICATION

	Detector	Readings		Measured		Target
1)	Short Space		cps		pu	pu
	Long Space		cps			
2)	Short Space		cps		pu	
	Long Space		cps			
3)	Short Space		cps		pu	
	Long Space		cps			

POST-SURVEY VERIFICATION

	Detector	Readings		Measured		Target
1)	Short Space		cps		pu	pu
	Long Space		cps			
2)	Short Space		cps		pu	pu
	Long Space		cps			
3)	Short Space		cps		pu	pu
	Long Space		cps			

Gamma Ray Calibration Report

Serial Number: #8
Tool Model: OPEN
Performed: Mon Jun 13 16:56:43 2011
Calibrator Value: 150.0 GAPI

Background Reading:

0.0

cps

Calibrator Reading:

175.0

cps

Sensitivity:

0.8371

GAPI/cps