



Pioneer Energy Services

Dual Compensated Porosity Log

15-065-23935-00-00

API No.	15-065-23935-00-00		
Company	H&C Operating, Inc.		
Well	Riedel #17-1		
Field	Wildcat		
County	Graham		
State	Kansas		
Location	330' FSL & 1900' FWL		
Sec: 17	Tw: 10 S	Rge: 25 W	
Permanent Datum	Ground Level	Elevation 2550	Other Services DIL MEL
Log Measured From	Kelly Bushing	11 Ft. Above Perm. Datum	
Drilling Measured From	Kelly Bushing		
Date	5/31/2013		
Run Number	One		
Type Log	CNL / CDL		
Depth Driller	4120		
Depth Logger	4119		
Bottom Logged Interval	4098		
Top Logged Interval	3400		
Type Fluid In Hole	Chemical		
Salinity, PPM CL	1500		
Density Level	9.3		
Level	Full		
Max. Rec. Temp. F	119		
Operating Rig Time	4 Hours		
Equipment -- Location	91	Hays	
Recorded By	Y. Ruiz		D. Martin
Witnessed By	Clayton Erickson		

Borehole Record				Casing Record			
Run No.	Bit	From	To	Size	Wgt.	From	To
1	12.25	00	266	8.625	24#	00	266
2	7.875	266	4120				

<<< Fold Here >>>

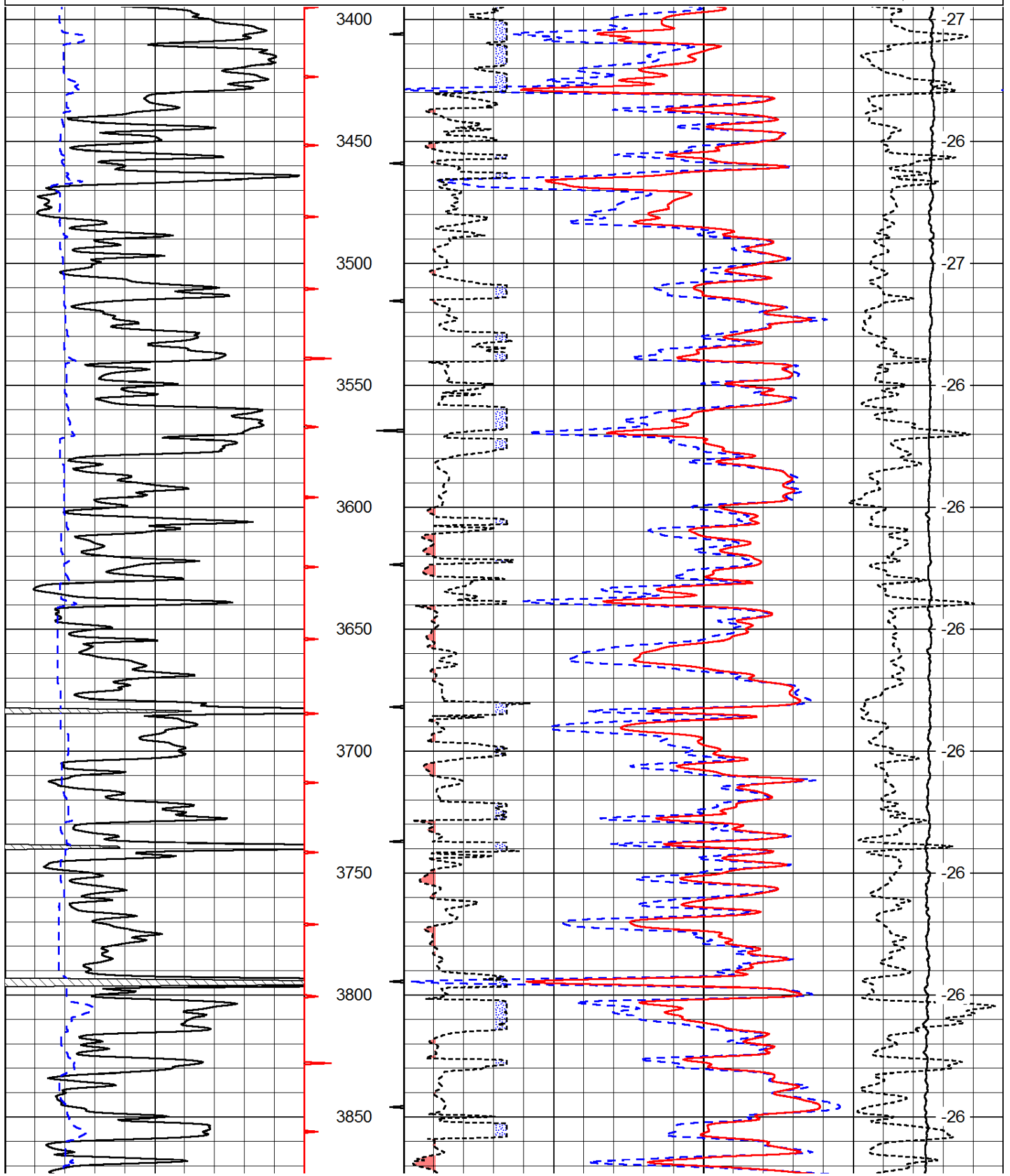
All interpretations are opinions based on inferences from electrical or other measurements and we cannot and do not guarantee the accuracy or correctness of any interpretation, and we shall not, except in the case of gross or willful negligence on our part, be liable or responsible for any loss, costs, damages, or expenses incurred or sustained by anyone resulting from any interpretation made by any of our officers, agents or employees. These interpretations are also subject to our general terms and conditions set out in our current Price Schedule.

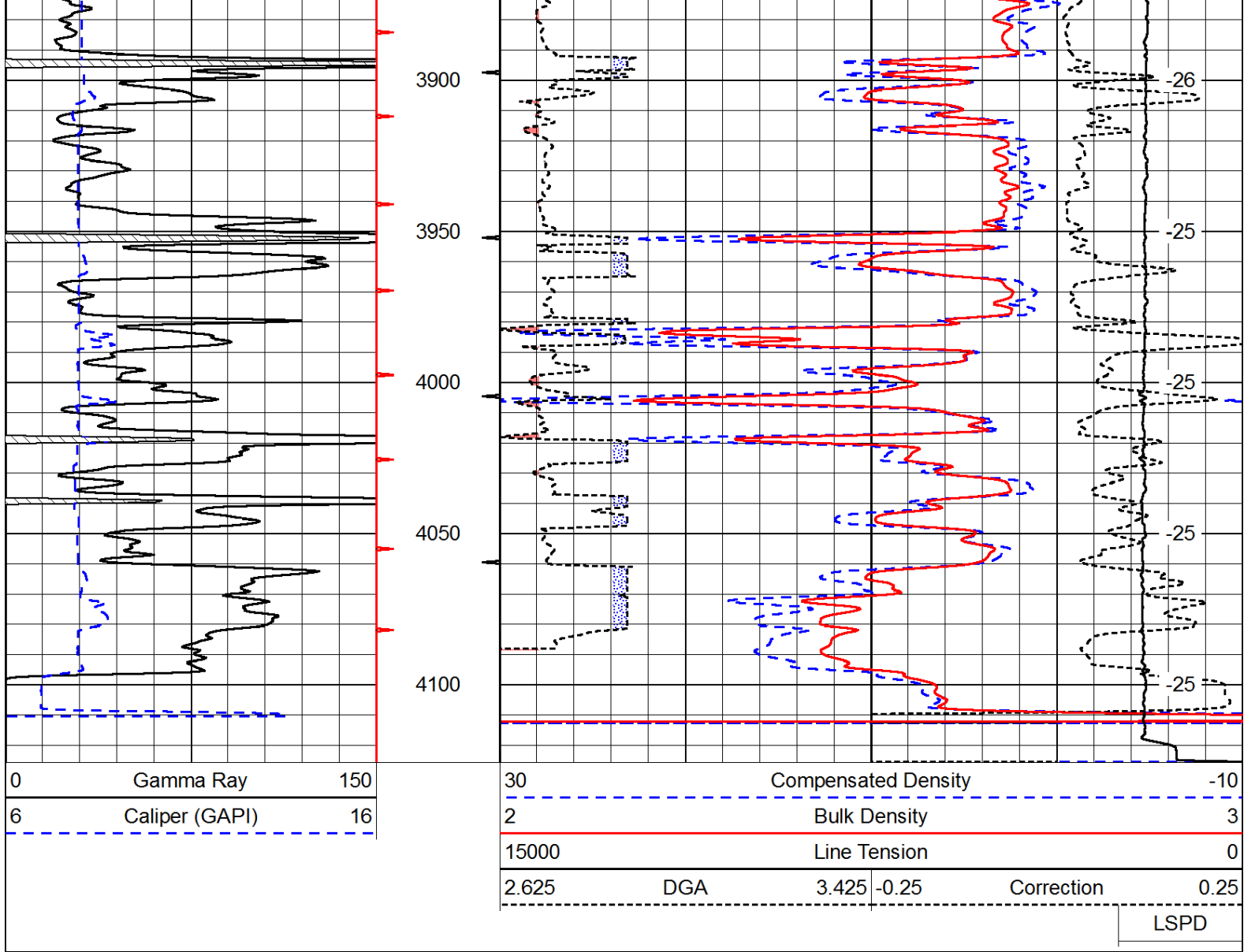
Comments

Thank you for using Pioneer Energy Services
www.pioneerenergy.com
 785 625 3858
 ST. Peter,
 4 West on E Rd, 1 South on 110 Rd, 1/4 East,
 North into

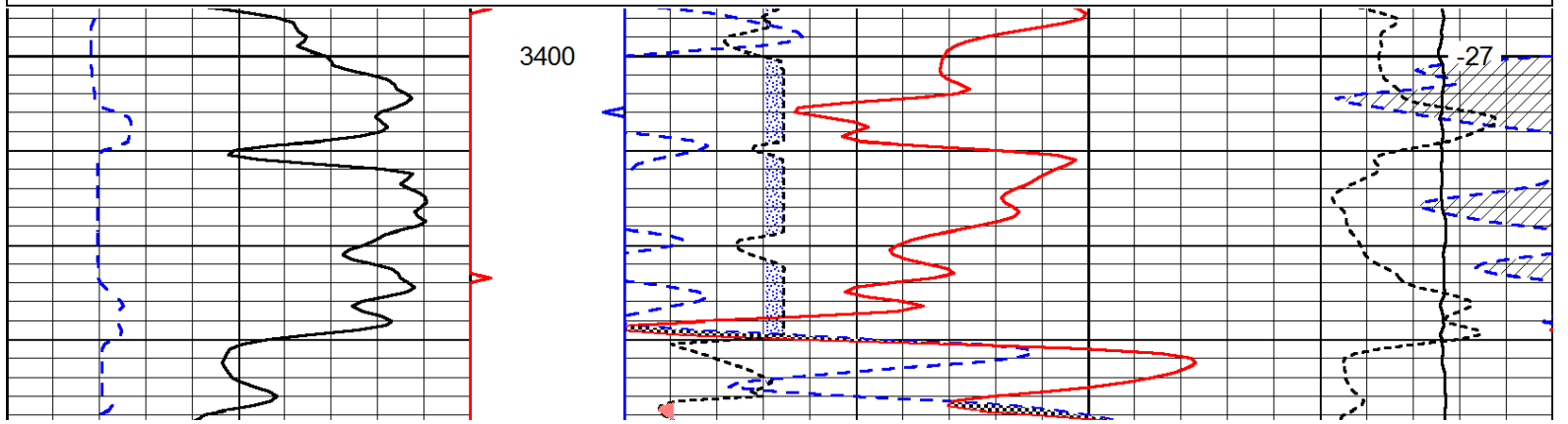
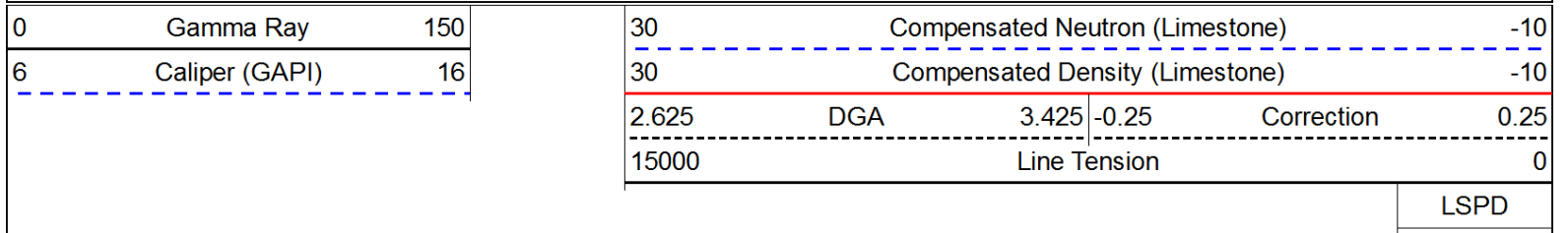
0	Gamma Ray	150
6	Caliper (GAPI)	16

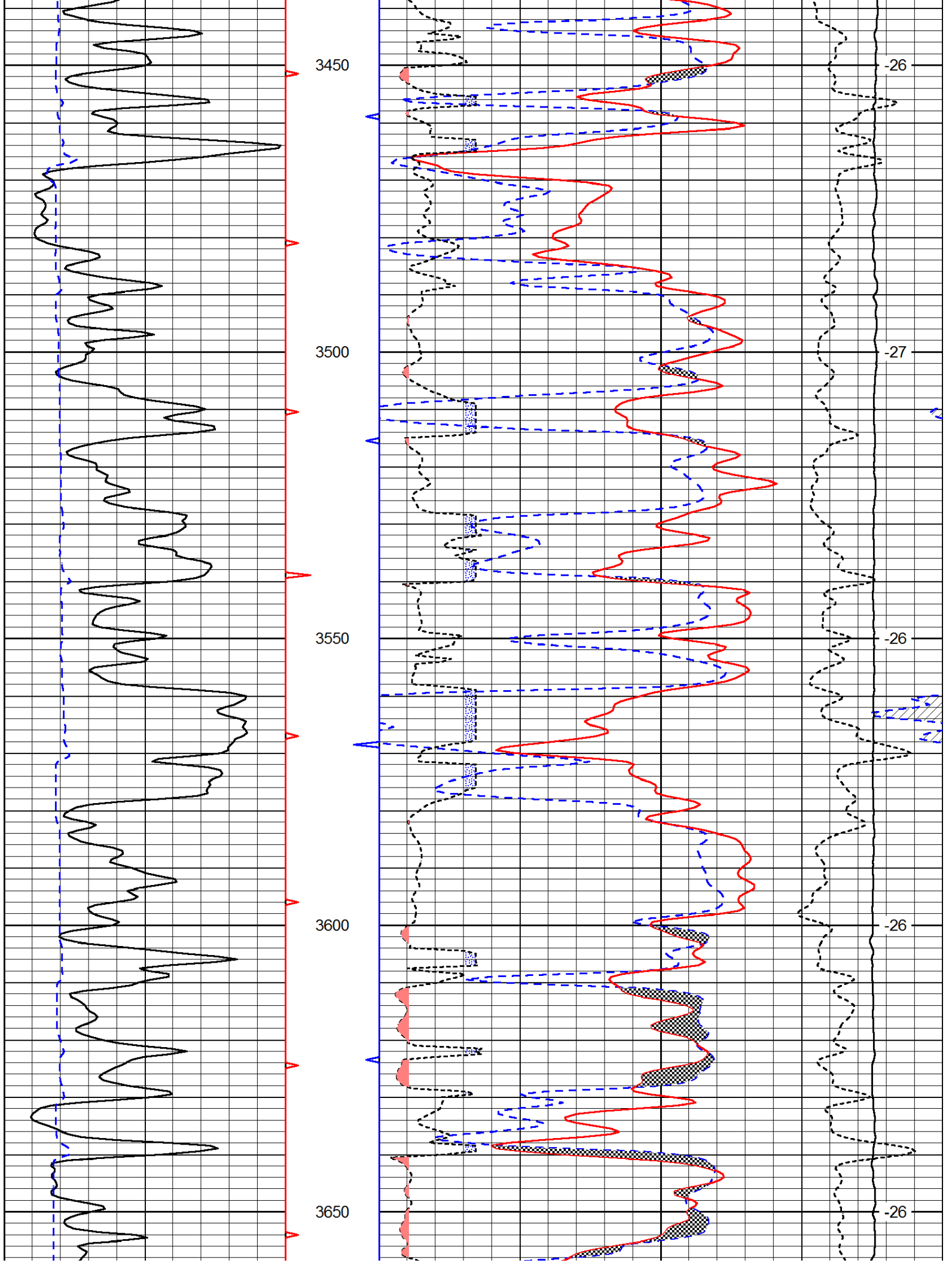
30	Compensated Density		-10
2	Bulk Density		3
15000	Line Tension		0
2.625	DGA	3.425	-0.25
			Correction
			0.25
LSPD			

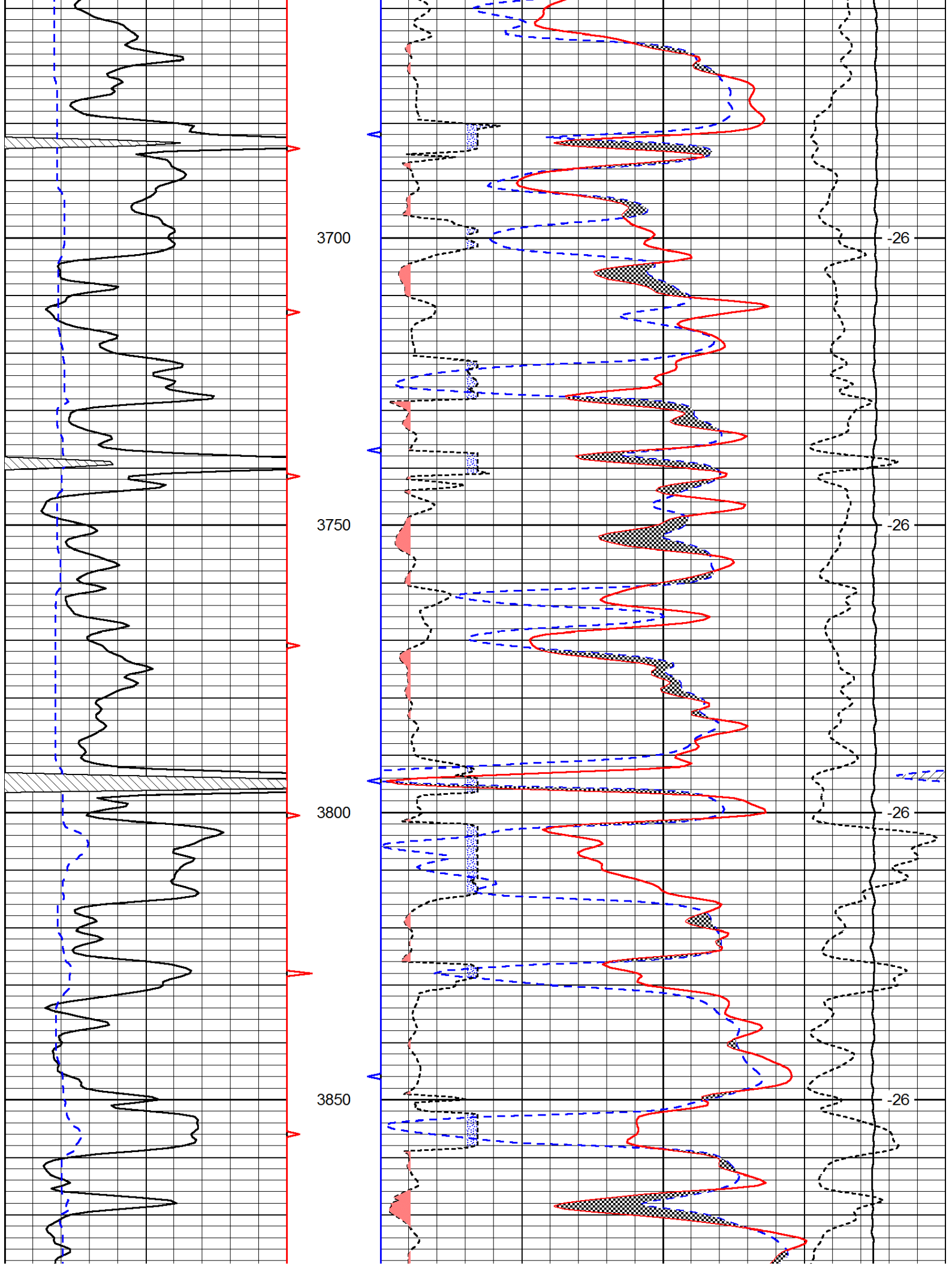


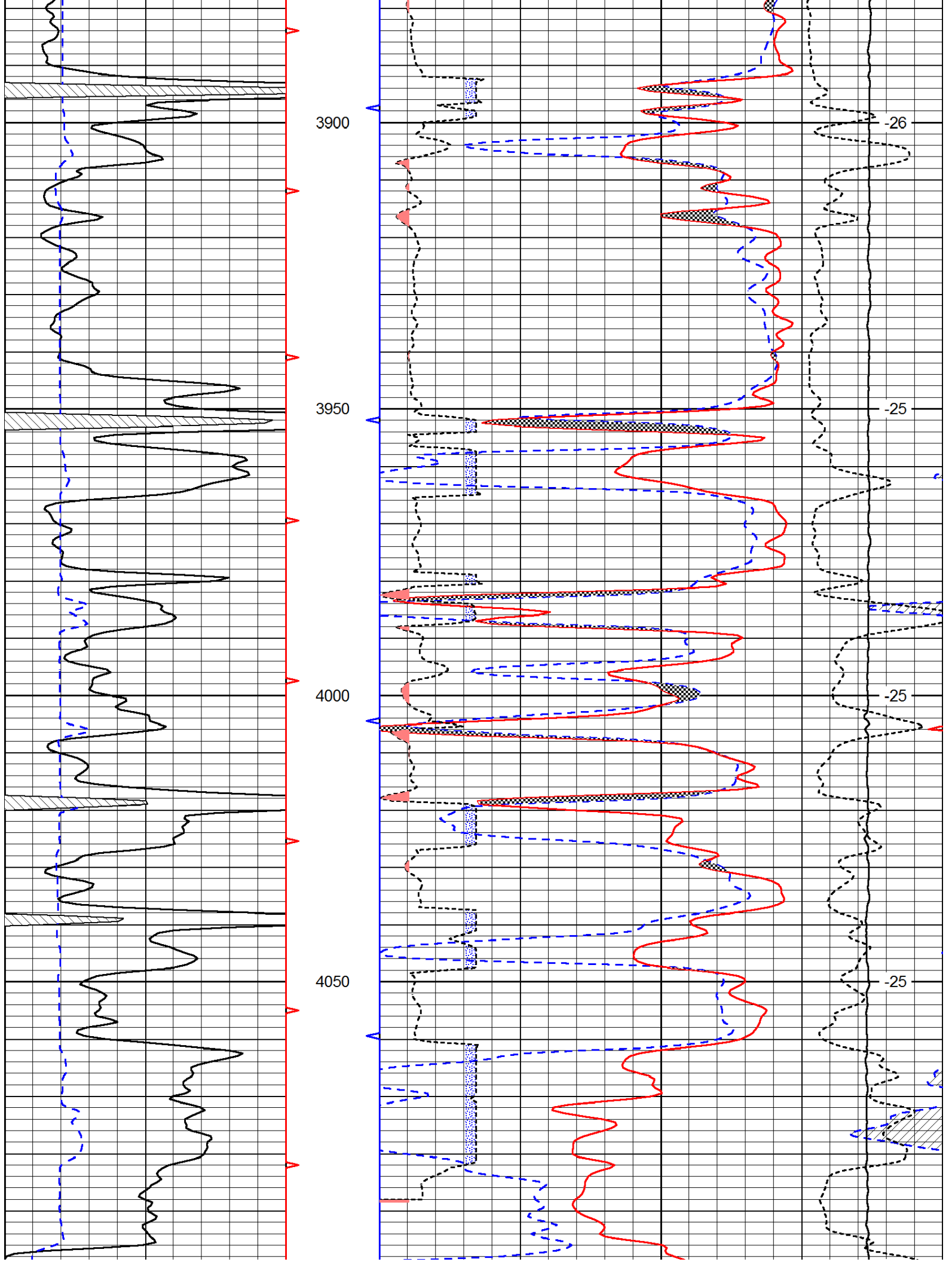


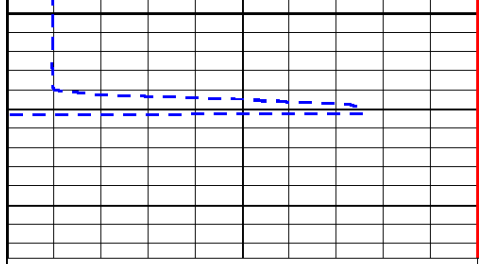
Database File: c:\warrior\data\h&c_riedel #17-1\h&c053113hd.db
 Dataset Pathname: DIL/hcstk
 Presentation Format: cndlspec
 Dataset Creation: Fri May 31 03:17:06 2013
 Charted by: Depth in Feet scaled 1:240



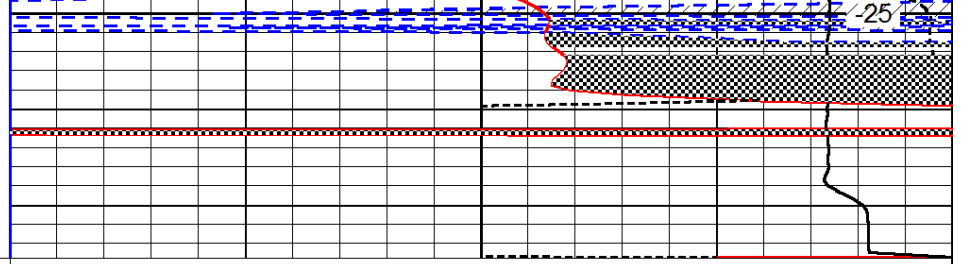








4100



0 Gamma Ray 150

6 Caliper (GAPI) 16

30 Compensated Neutron (Limestone) -10

30 Compensated Density (Limestone) -10

2.625 DGA 3.425 -0.25 Correction 0.25

15000 Line Tension 0

LSPD