



SUPERIOR
Hays,
Kansas

**COMPENSATED
DENSITY / NEUTRON
LOG**

Company: CAPTIVA ENERGY, LLC.
Well: MEIGS TRUST #1-5
Field: WILDCAT
County: PRATT
State: KANSAS

Company: CAPTIVA ENERGY, LLC.
Well: MEIGS TRUST #1-5
Field: WILDCAT
County: PRATT
State: KANSAS

Location: 664' FSL & 1175' FWL
API #: 15-151-22333-0000
Other Services: DIL/MEL SONIC
Permanent Datum: GROUND LEVEL Elevation: 1956
Log Measured From: KELLY BUSHING 13' A.G.L.
Drilling Measured From: KELLY BUSHING
Elevation: K.B. 1969, D.F. 1967, G.L. 1956

Date	6/1/09		
Run Number	ONE		
Depth Driller	4704		
Depth Logger	4705		
Bottom Logged Interval	4681		
Top Log Interval	3700		
Casing Driller	13 3/8"@248'		
Casing Logger	250		
Bit Size	7 7/8		
Type Fluid In Hole	CHEMICAL MUD	CHLORIDES 7.700 PPM	
Density / Viscosity	9.2/60		
pH / Fluid Loss	9.0/9.6		
Source of Sample	FLOWLINE		
Rm @ Meas. Temp	.700@77F		
Rmf @ Meas. Temp	.525@77F		
Rmc @ Meas. Temp	.840@77F		
Source of Rmf / Rmc	MEASUREMENT		
Rm @ BHT	.442@122F		
Time Circulation Stopped	2.5 HOURS		
Time Logger on Bottom	7:30 P.M.		
Maximum Recorded Temperature	122F		
Equipment Number	0836		
Location	HAYS, KANSAS		
Recorded By	JEFF LUEBBERS		
Witnessed By	KEITH REAVIS		

<<< Fold Here >>>

All interpretations are opinions based on inferences from electrical or other measurements and we cannot and do not guarantee the accuracy or correctness of any interpretation, and we shall not, except in the case of gross or willful negligence on our part, be liable or responsible for any loss, costs, damages, or expenses incurred or sustained by anyone resulting from any interpretation made by any of our officers, agents or employees. These interpretations are also subject to our general terms and conditions set out in our current Price Schedule.

Comments

THANK YOU FOR USING SUPERIOR WELL SERVICE HAYS, KANSAS (785) 628-6395
DIRECTIONS
PRATT, KS. 6S. ON HWY 281, 1 3/4W., N. INTO

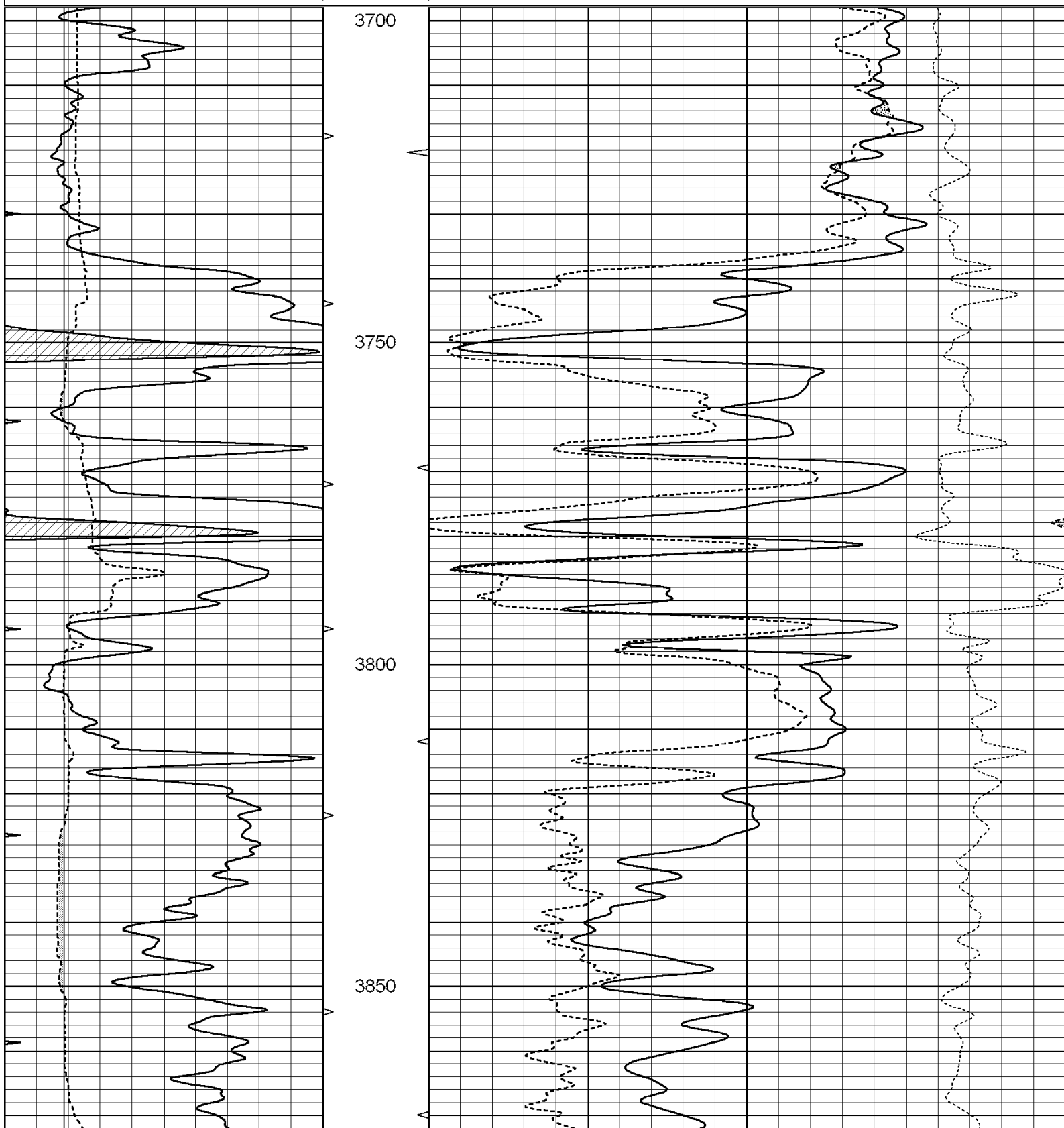


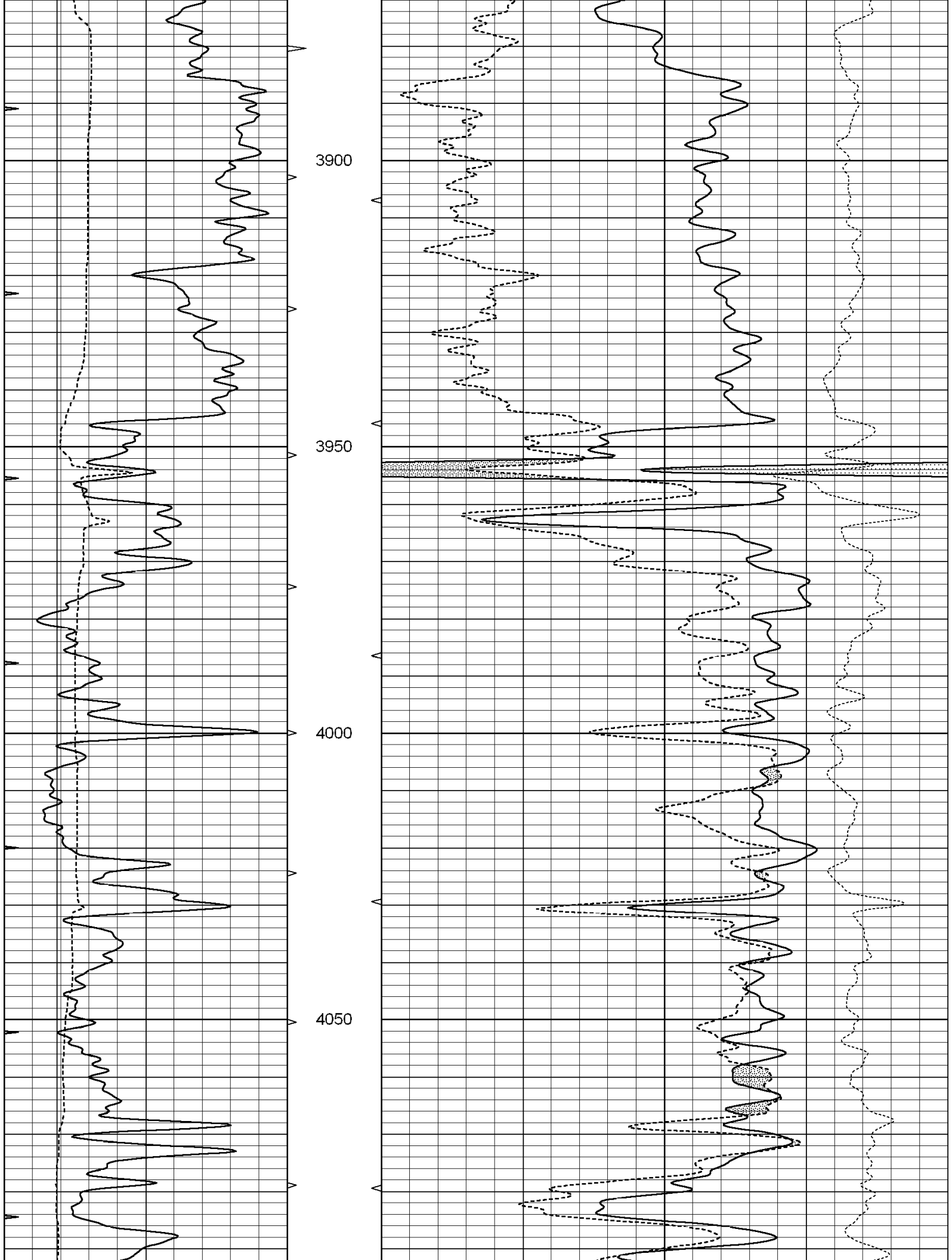
SUPERIOR
Hays,
Kansas

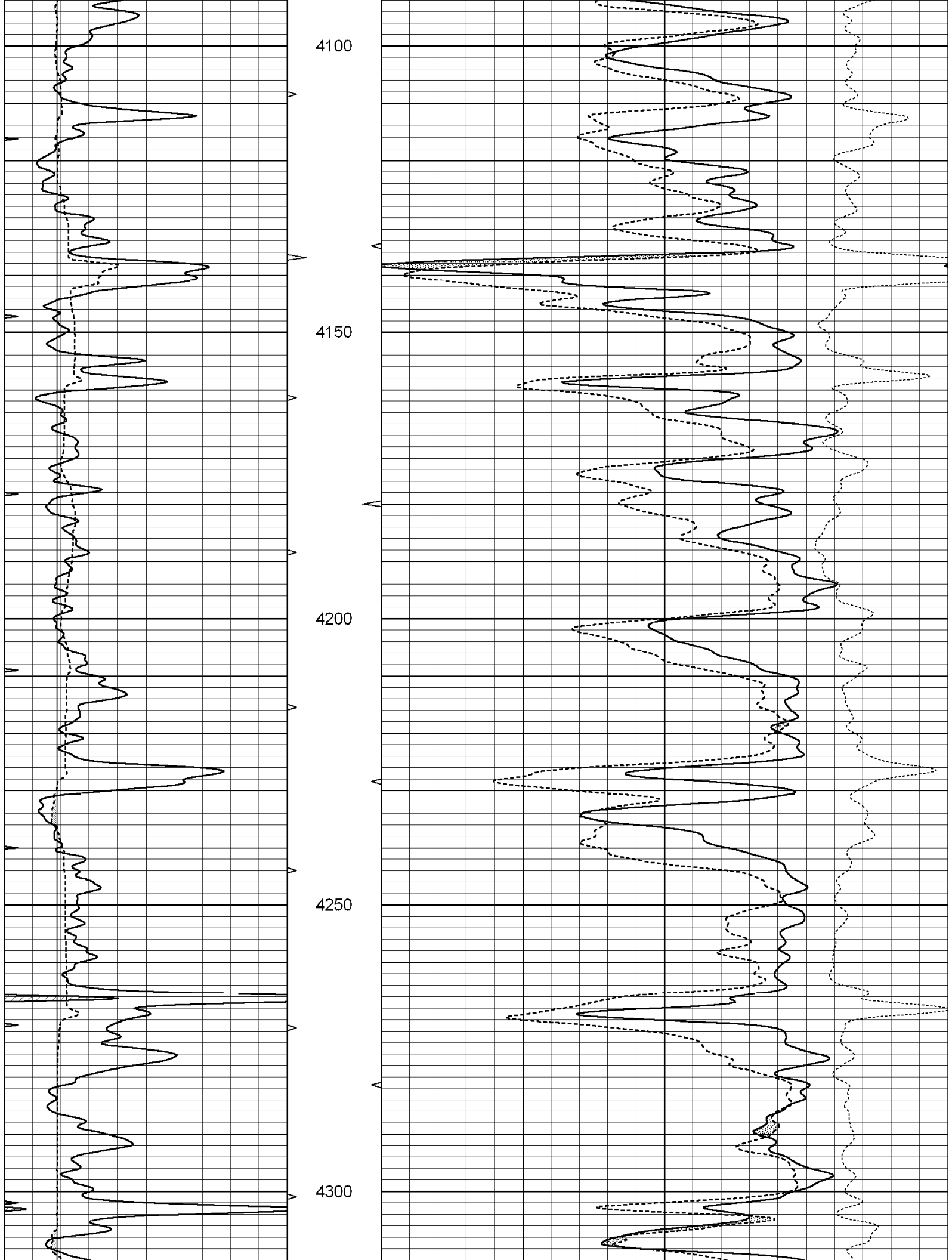
MAIN SECTION

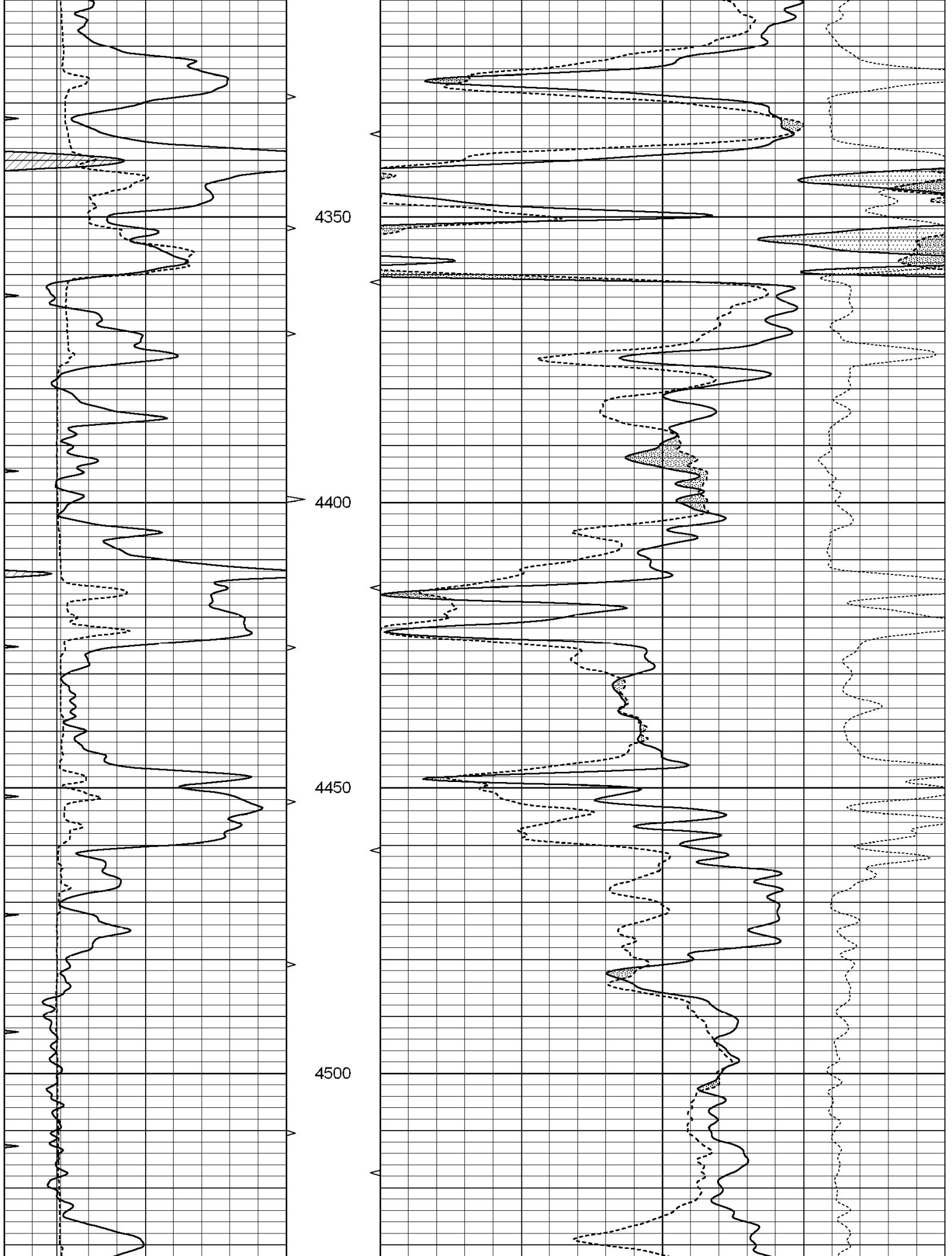
Database File: 003272pe.db
 Dataset Pathname: pass3.7
 Presentation Format: den_neu
 Dataset Creation: Mon Jun 01 20:22:09 2009 by Calc Open-Cased 060407
 Charted by: Depth in Feet scaled 1:240

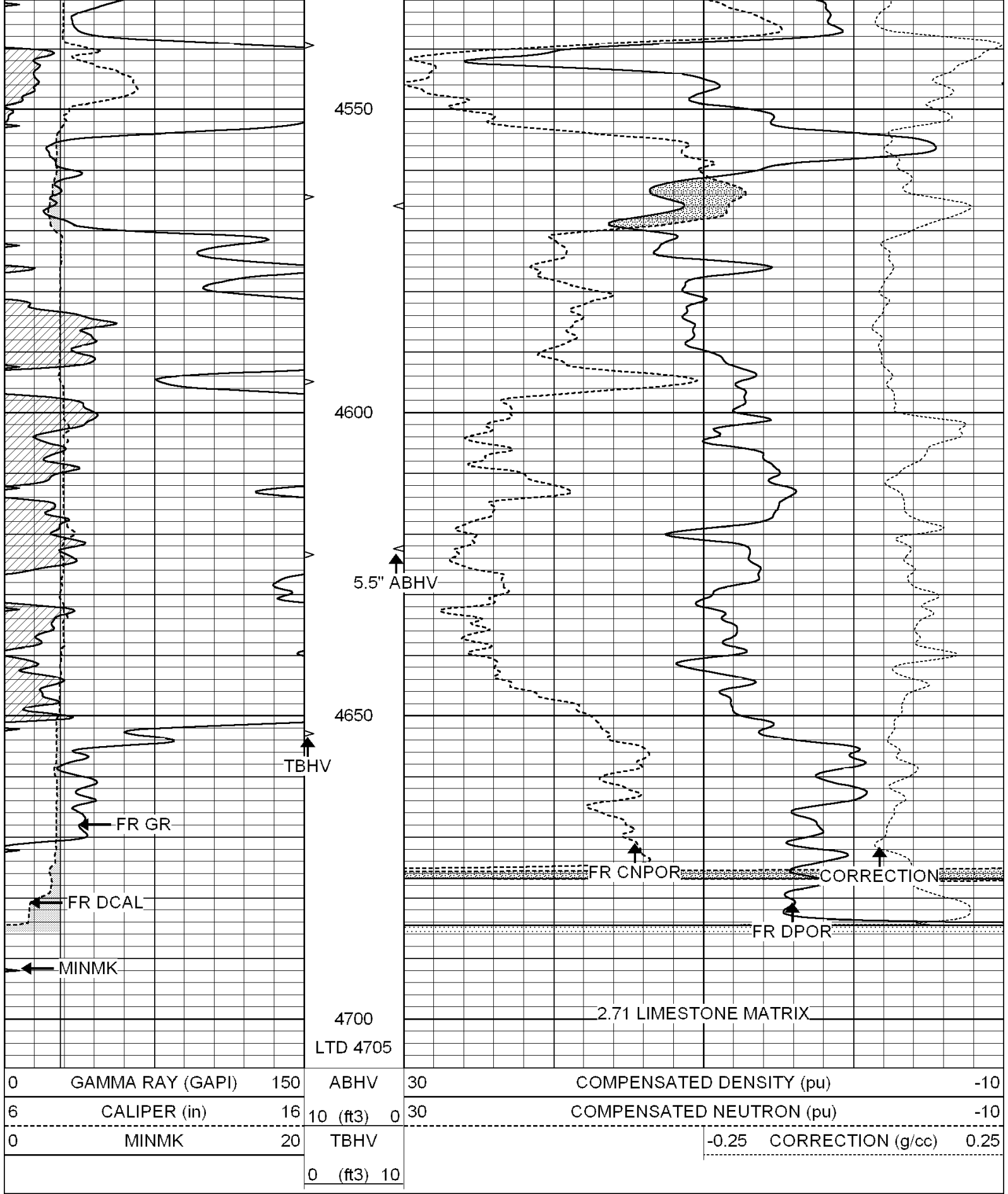
0	GAMMA RAY (GAPI)	150	ABHV	30	COMPENSATED DENSITY (pu)	-10
6	CALIPER (in)	16	10 (ft3) 0	30	COMPENSATED NEUTRON (pu)	-10
0	MINMK	20	TBHV		-0.25 CORRECTION (g/cc)	0.25
			0 (ft3) 10			











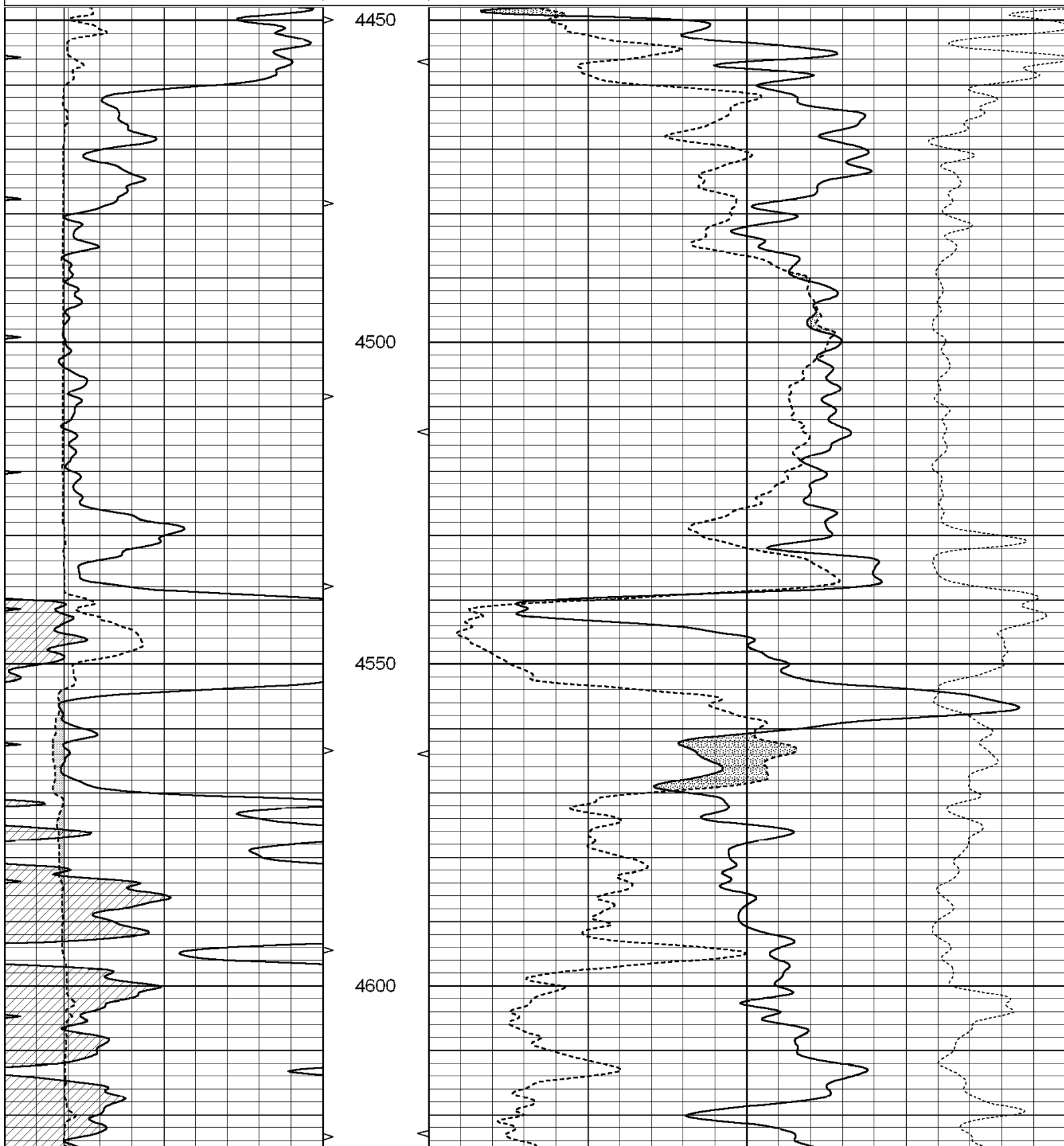
0	GAMMA RAY (GAPI)	150	ABHV	30	COMPENSATED DENSITY (pu)	-10		
6	CALIPER (in)	16	10 (ft3)	0	30	COMPENSATED NEUTRON (pu)	-10	
0	MINMK	20	TBHV			-0.25	CORRECTION (g/cc)	0.25
			0 (ft3)	10				

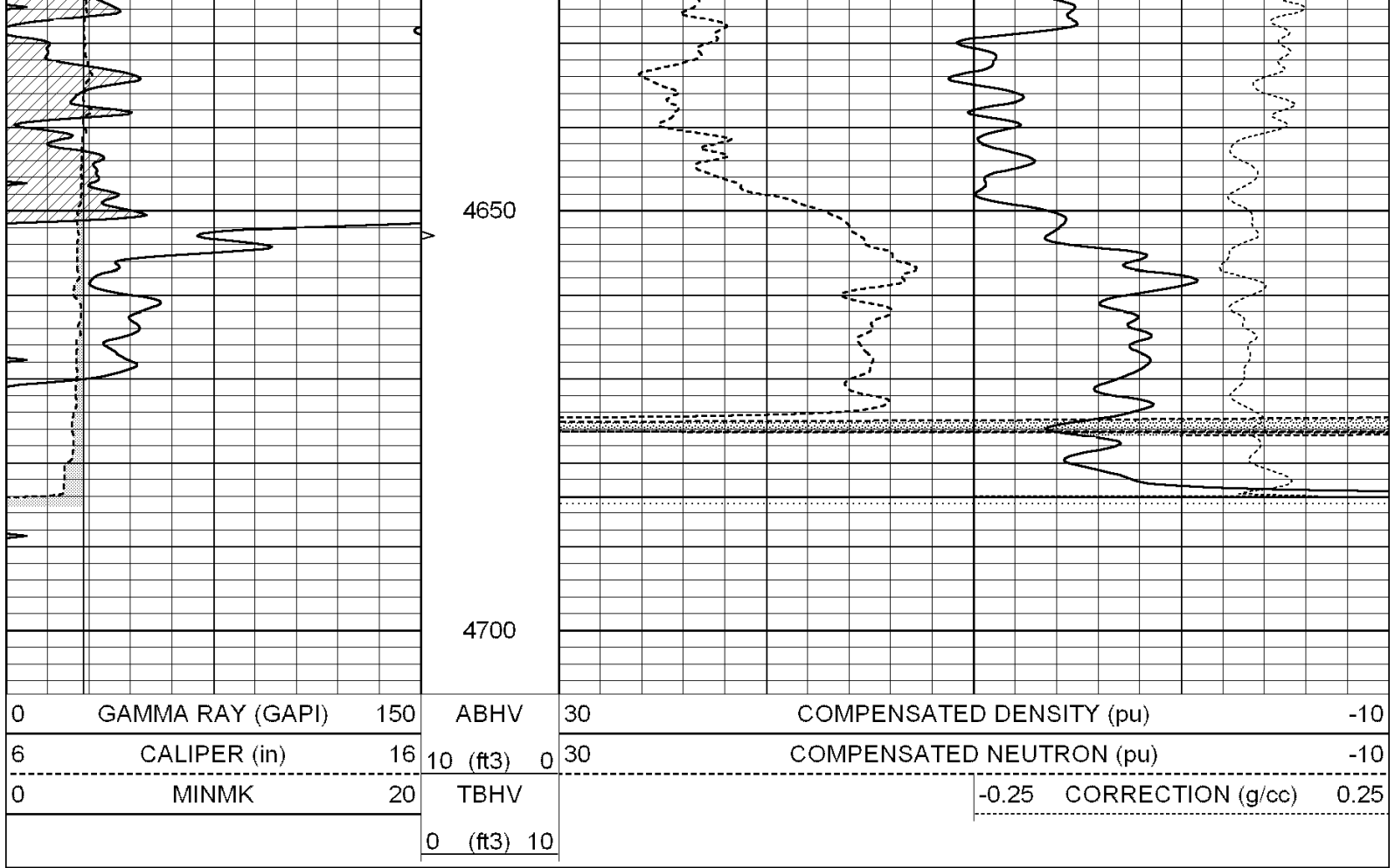


REPEAT SECTION

Database File: 003272pe.db
 Dataset Pathname: pass2.7
 Presentation Format: den_neu
 Dataset Creation: Mon Jun 01 20:23:27 2009 by Calc Open-Cased 060407
 Charted by: Depth in Feet scaled 1:240

0	GAMMA RAY (GAPI)	150	ABHV	30	COMPENSATED DENSITY (pu)	-10
6	CALIPER (in)	16	10 (ft3) 0	30	COMPENSATED NEUTRON (pu)	-10
0	MINMK	20	TBHV		-0.25 CORRECTION (g/cc)	0.25
			0 (ft3) 10			





Calibration Report

Database File: 003272pe.db
 Dataset Pathname: pass3.7
 Dataset Creation: Mon Jun 01 20:22:09 2009 by Calc Open-Cased 060407

Dual Induction Calibration Report

Serial-Model: DIL2-GEAR
 Performed: Mon Jun 01 19:17:23 2009

Loop:	Readings				References		Results	
	Air	Loop			Air	Loop	m	b
Deep	0.002	0.667	V	0.000	400.000	mmho-m	650.000	5.000
Medium	-0.003	0.739	V	0.000	462.500	mmho-m	750.000	-16.000
Internal:	Zero	Cal		Zero	Cal		m	b
Deep	0.001	0.658	V	0.000	400.000	mmho-m	609.010	-0.700
Medium	0.015	0.761	V	0.000	462.500	mmho-m	620.392	-9.326

Litho Density Calibration Report

Serial: 003N Model: PRB
 Performed Wed Feb 18 13:47:54 2009

Litho Density Calibration

	Background	Magnesium	Aluminum	Sandstone	
Window 1	2040.8	12807.7	4363.1	13737.9	cps
Window 2	1833.5	9910.0	3570.0	10363.1	cps
Window 3	1572.8	6142.6	2530.0	6298.3	cps
Window 4	471.2	473.7	466.8	470.3	cps

Long Space	0.0	8076.4	1736.5	8529.6	cps
Short Space	2.2	3464.4	2249.4	3602.7	cps
Rho		1.7100	2.5900	1.3800	g/cc
Pe			2.5700	1.5500	

Rib Angle	: 44.3	Rib Slope	: 0.976	Density/Spine Ratio	: 0.551
Spine Angle	: 74.3	Spine Slope	: 3.559	Spine Intercept	: -20.0

Caliper	Readings	Reference	
Low Ref	2.1	6.3	
High Ref	4.4	14.0	
	Gain: 3.3		Offset: -0.5

Compensated Neutron Calibration Report

Serial Number:	NEU_3I
Tool Model:	G

CALIBRATION

Detector	Readings	Target	Normalization
Short Space	997.00 cps	1000.00 cps	1.0000
Long Space	986.00 cps	1000.00 cps	1.0000

Gamma Ray Calibration Report

Serial Number:	GR3
Tool Model:	OPEN
Performed:	Mon Jun 01 19:18:52 2009
Calibrator Value:	200.0 GAPI
Background Reading:	3.0 cps
Calibrator Reading:	186.0 cps
Sensitivity:	0.4500 GAPI/cps