



SUPERIOR
Hays,
Kansas

**DUAL INDUCTION
LOG**

Company: CAPTIVA ENERGY, LLC.
Well: MEIGS TRUST #1-5
Field: WILDCAT
County: PRATT
State: KANSAS

Company: CAPTIVA ENERGY, LLC.
Well: MEIGS TRUST #1-5
Field: WILDCAT
County: PRATT
State: KANSAS

Location: 664' FSL & 1175' FWL
API #: 15-151-22333-0000
SEC 5 TWP 29S RGE 13W
Permanent Datum: GROUND LEVEL
Log Measured From: KELLY BUSHING 13' A.G.L.
Drilling Measured From: KELLY BUSHING
Elevation: 1956
Other Services: CDL/CNL MEL/SONIC
Elevation: K.B. 1969, D.F. 1967, G.L. 1956

Date	6/1/09
Run Number	ONE
Depth Driller	4704
Depth Logger	4705
Bottom Logged Interval	4703
Top Log Interval	00
Casing Driller	13 3/8"@248'
Casing Logger	250
Bit Size	7 7/8
Type Fluid In Hole	CHEMICAL MUD
Density / Viscosity	9.2/60
pH / Fluid Loss	9.0/9.6
Source of Sample	FLOWLINE
Rm @ Meas. Temp	.700@77F
Rmf @ Meas. Temp	.525@77F
Rmc @ Meas. Temp	.840@77F
Source of Rmf / Rmc	MEASUREMENT
Rm @ BHT	.442@122F
Time Circulation Stopped	2.5 HOURS
Time Logger on Bottom	7:30 P.M.
Maximum Recorded Temperature	122F
Equipment Number	0836
Location	HAYS, KANSAS
Recorded By	JEFF LUEBBERS
Witnessed By	KEITH REAVIS

<<< Fold Here >>>

All interpretations are opinions based on inferences from electrical or other measurements and we cannot and do not guarantee the accuracy or correctness of any interpretation, and we shall not, except in the case of gross or willful negligence on our part, be liable or responsible for any loss, costs, damages, or expenses incurred or sustained by anyone resulting from any interpretation made by any of our officers, agents or employees. These interpretations are also subject to our general terms and conditions set out in our current Price Schedule.

Comments

THANK YOU FOR USING SUPERIOR WELL SERVICE HAYS, KANSAS (785) 628-6395
DIRECTIONS
PRATT, KS. 6S. ON HWY 281, 1 3/4W., N. INTO



SUPERIOR
Hays,
Kansas

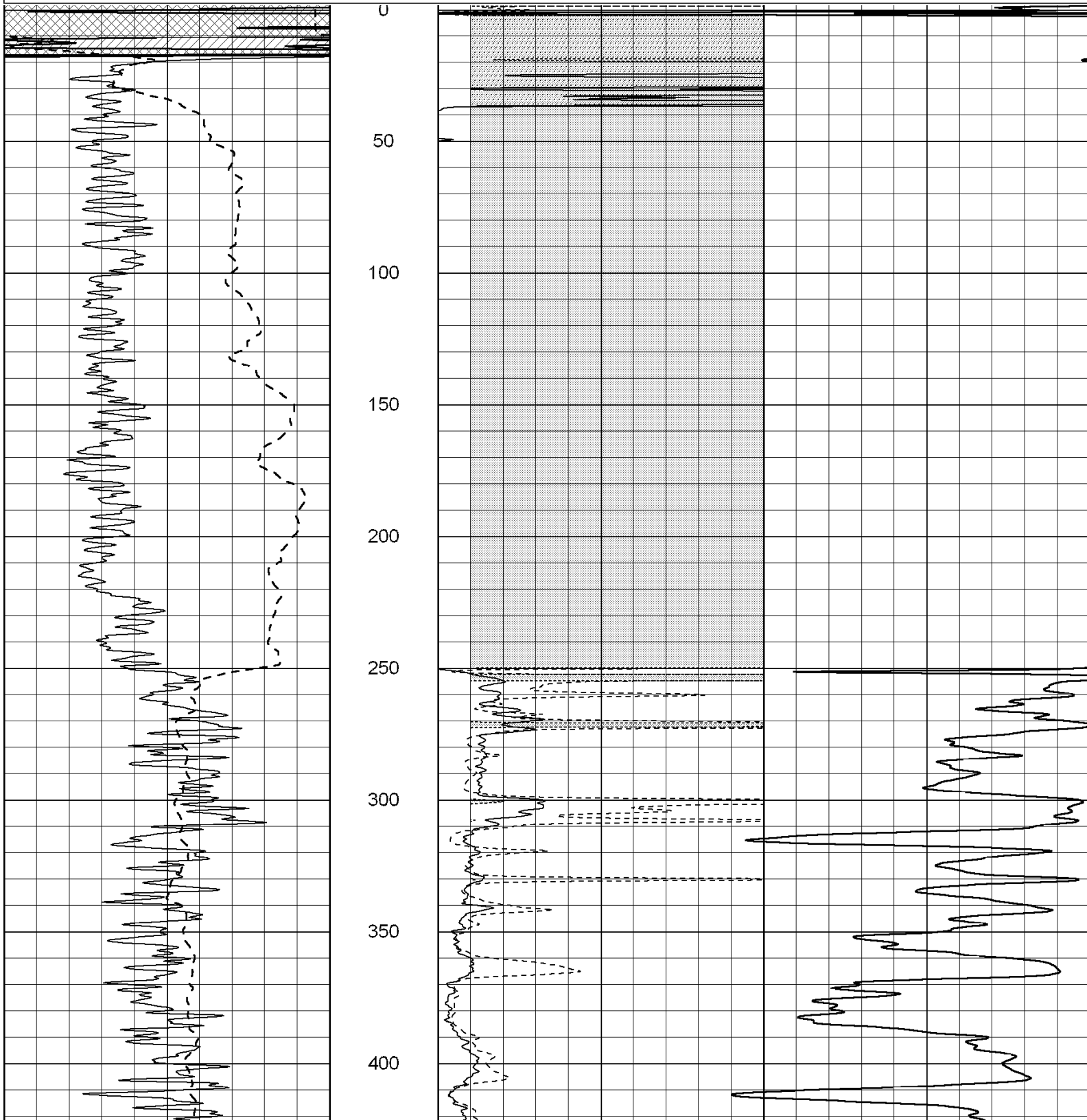
MAIN SECTION

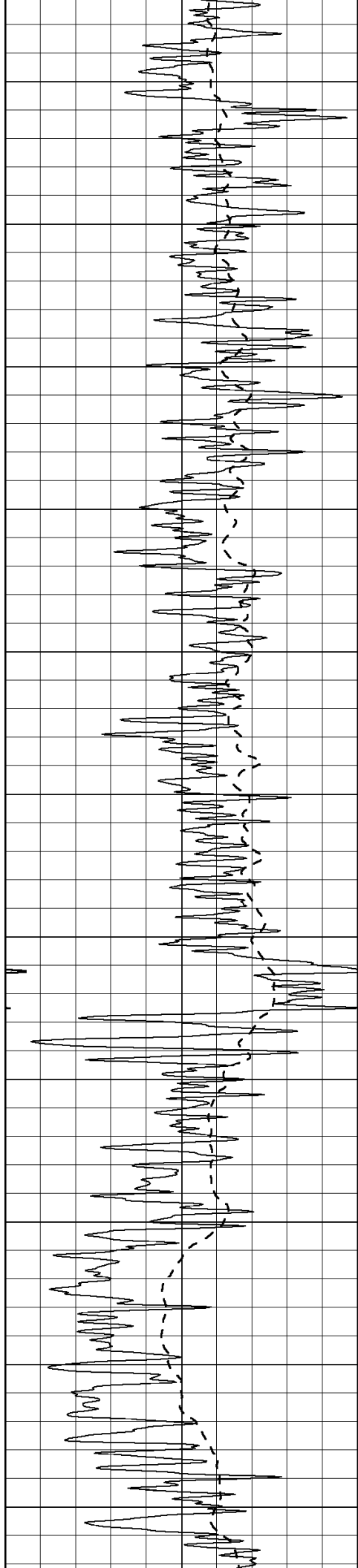
Database File: 003272pe.db
 Dataset Pathname: pass3.8
 Presentation Format: dil2
 Dataset Creation: Mon Jun 01 20:48:58 2009 by Calc Open-Cased 060407
 Charted by: Depth in Feet scaled 1:600

0	Gamma Ray (GAPI)	150
-100	SP (mV)	100

0	RLL3 (Ohm-m)	50
0	RILD (Ohm-m)	50

1000	CILD (mmho-m)		0
50	RILD X10 (Ohm-m)	500	
50	RLL3 X10 (Ohm-m)	500	





450

500

550

600

650

700

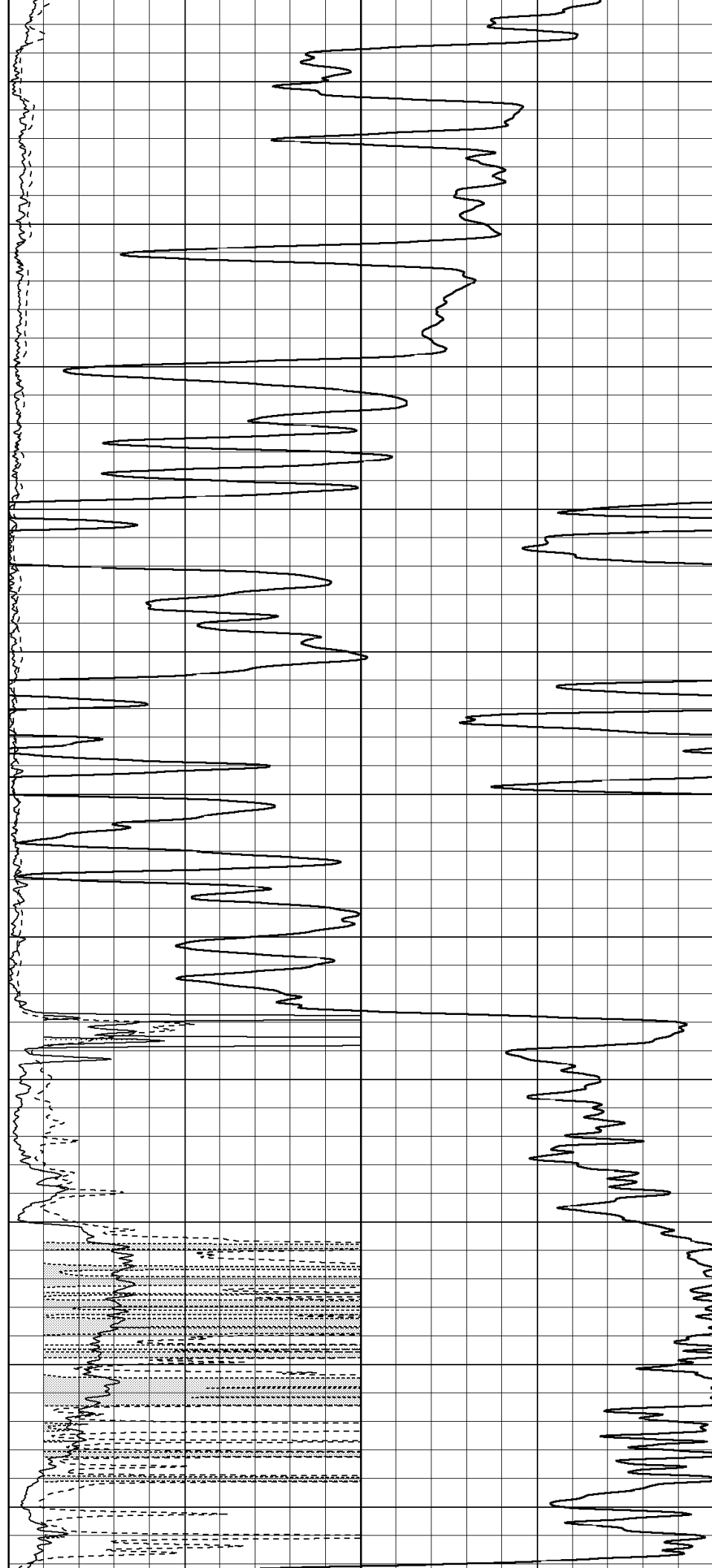
750

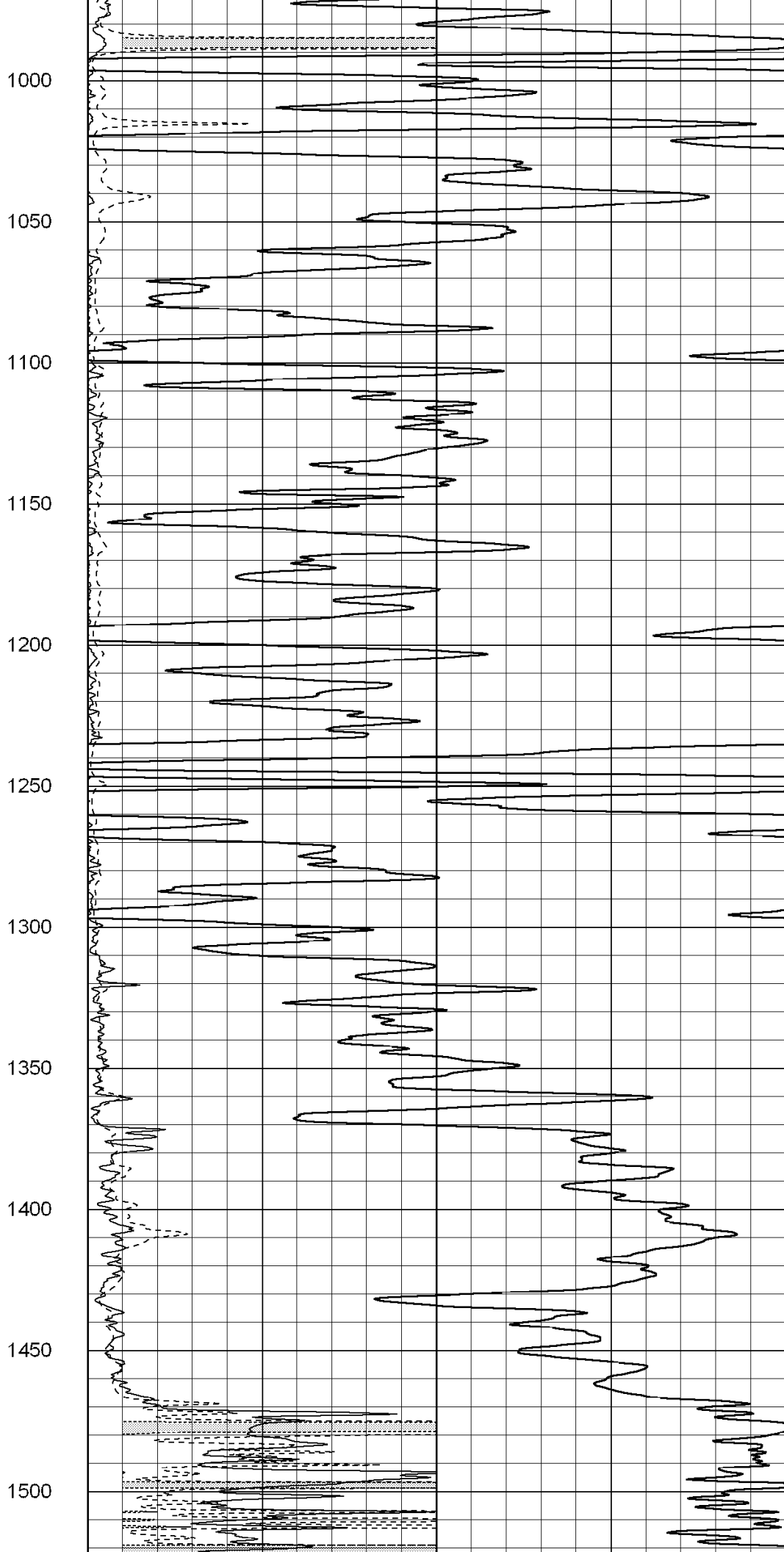
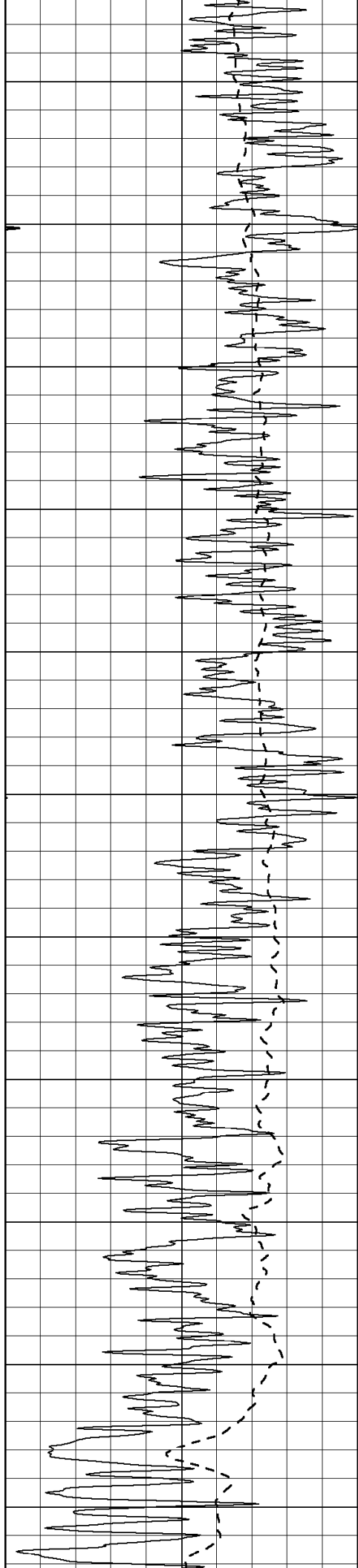
800

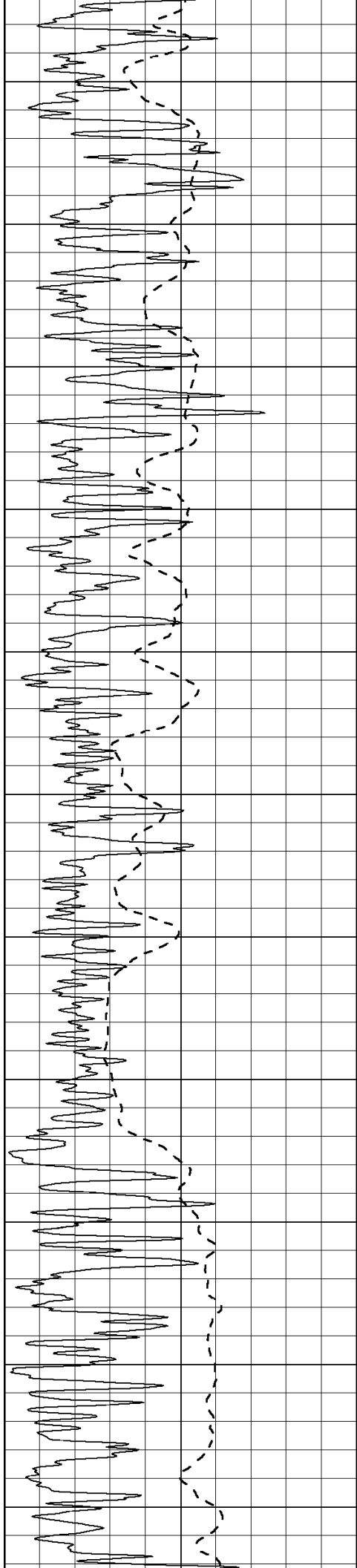
850

900

950







1550

1600

1650

1700

1750

1800

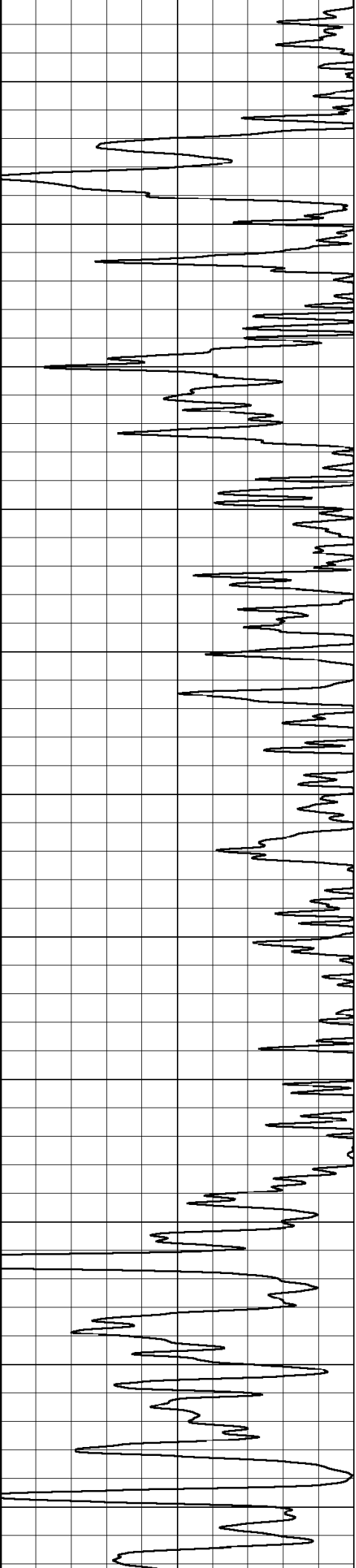
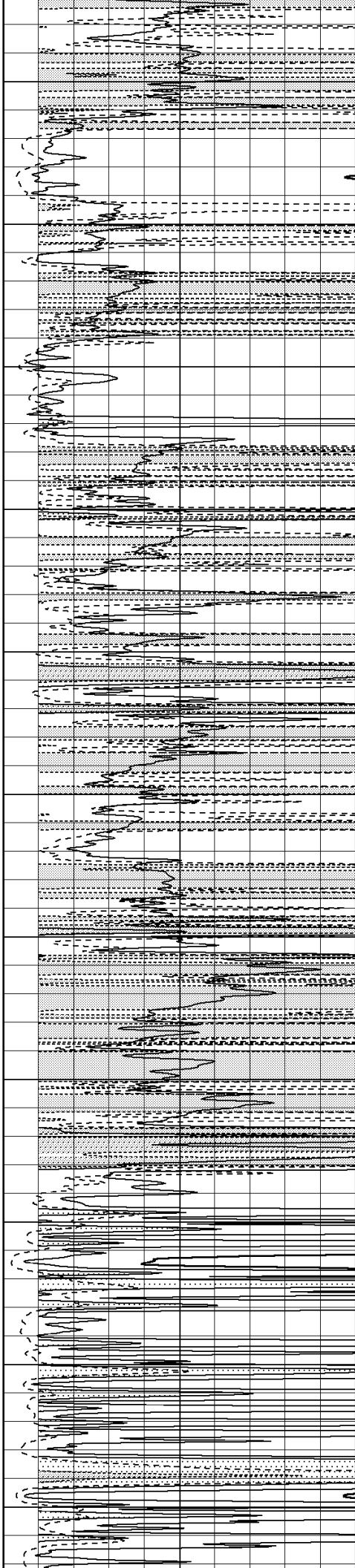
1850

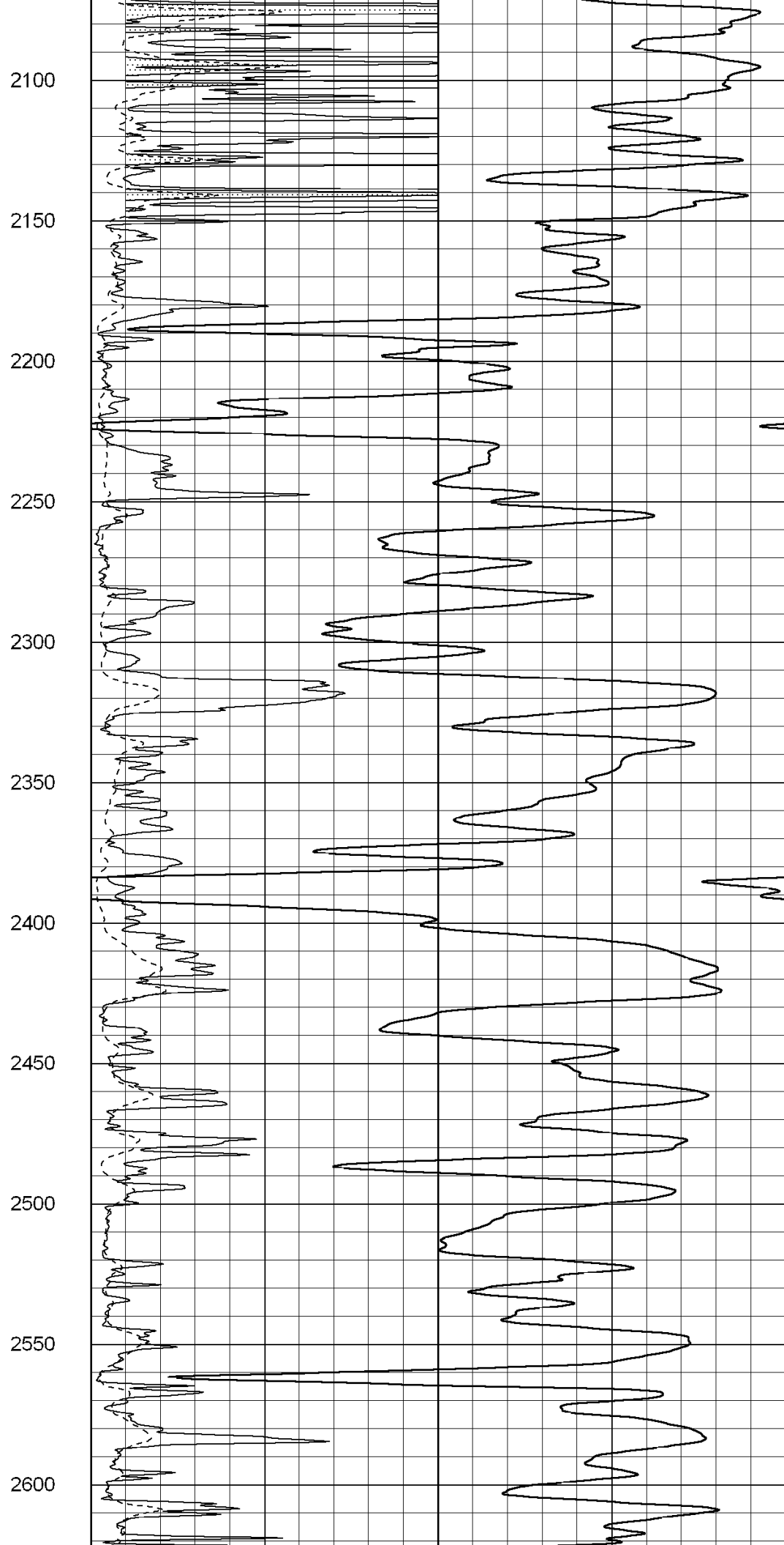
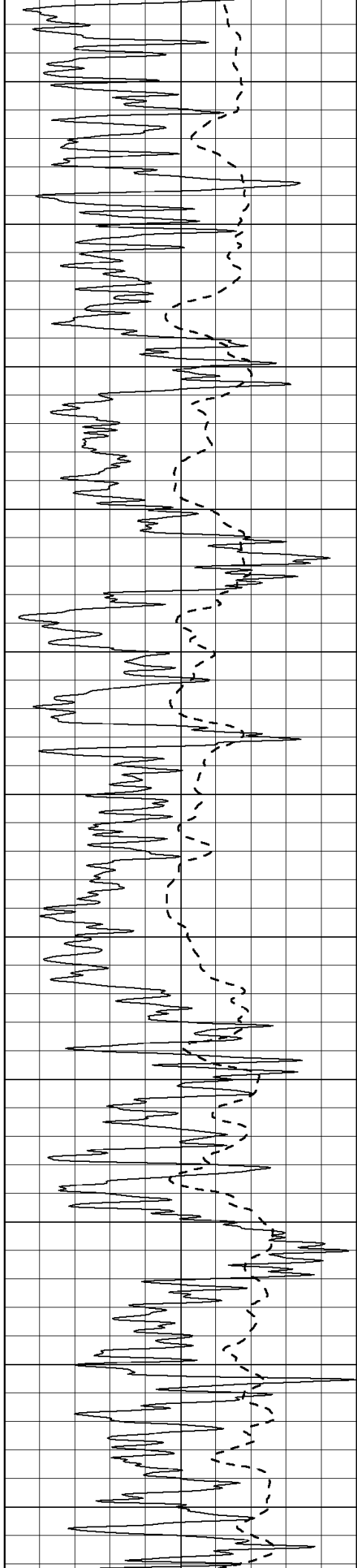
1900

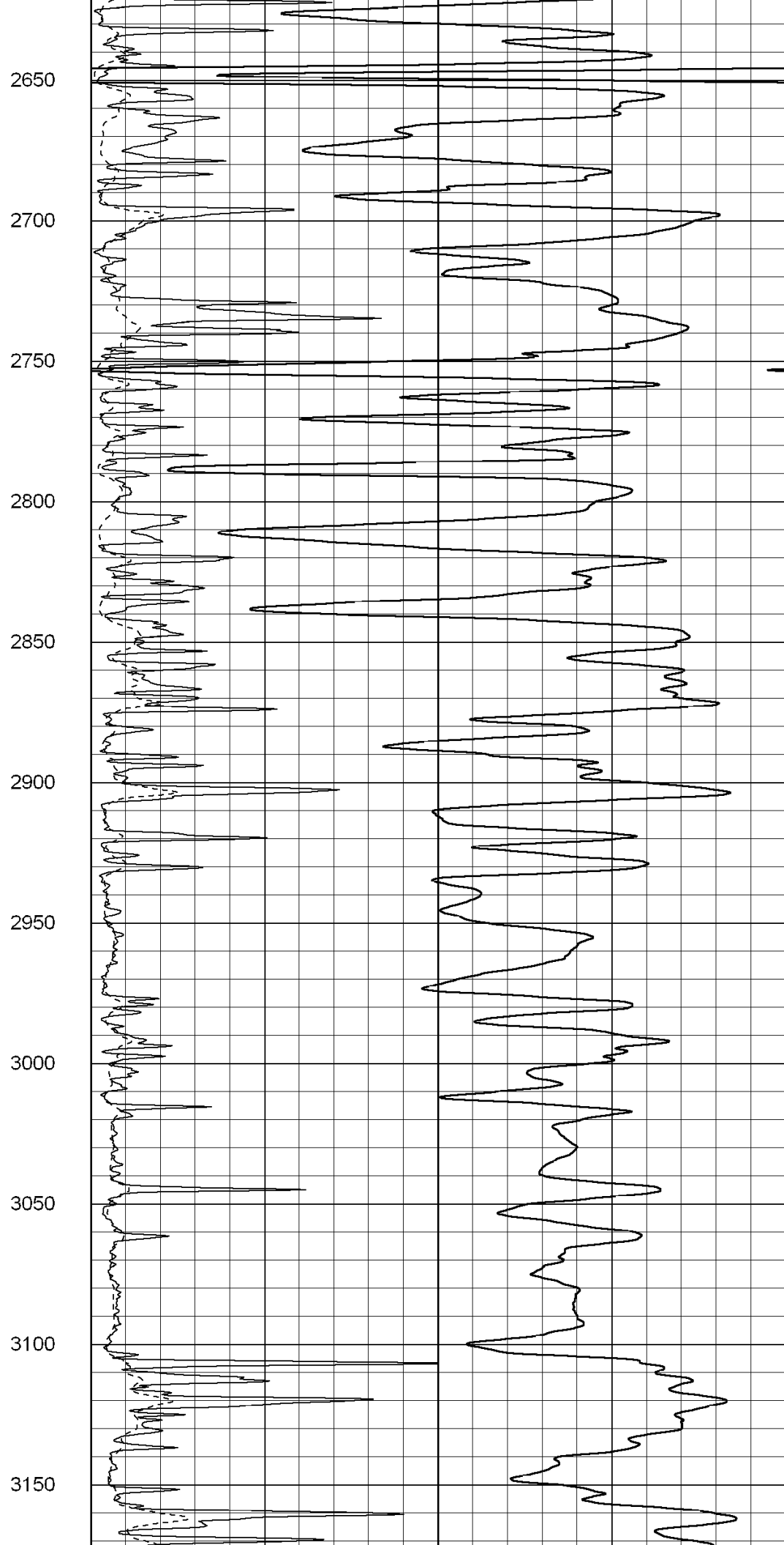
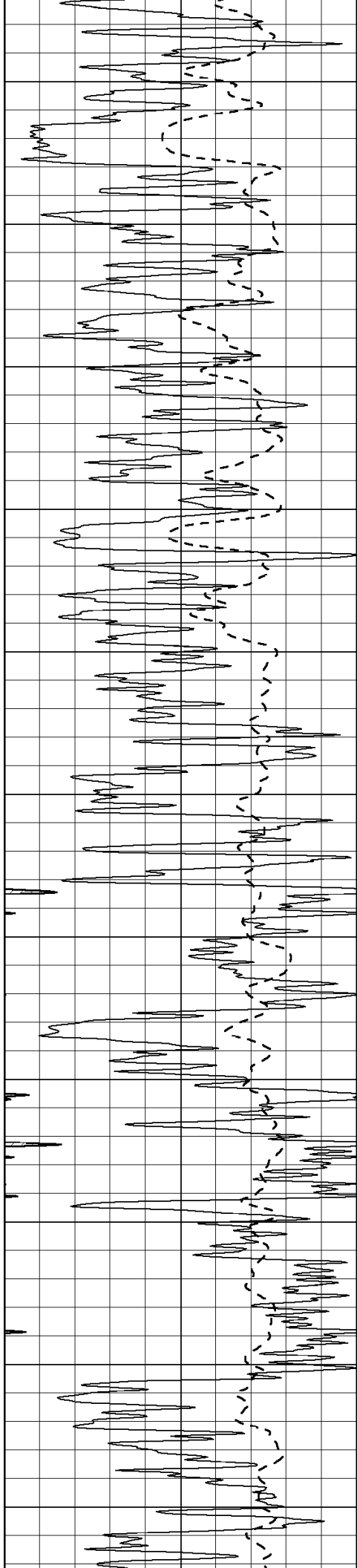
1950

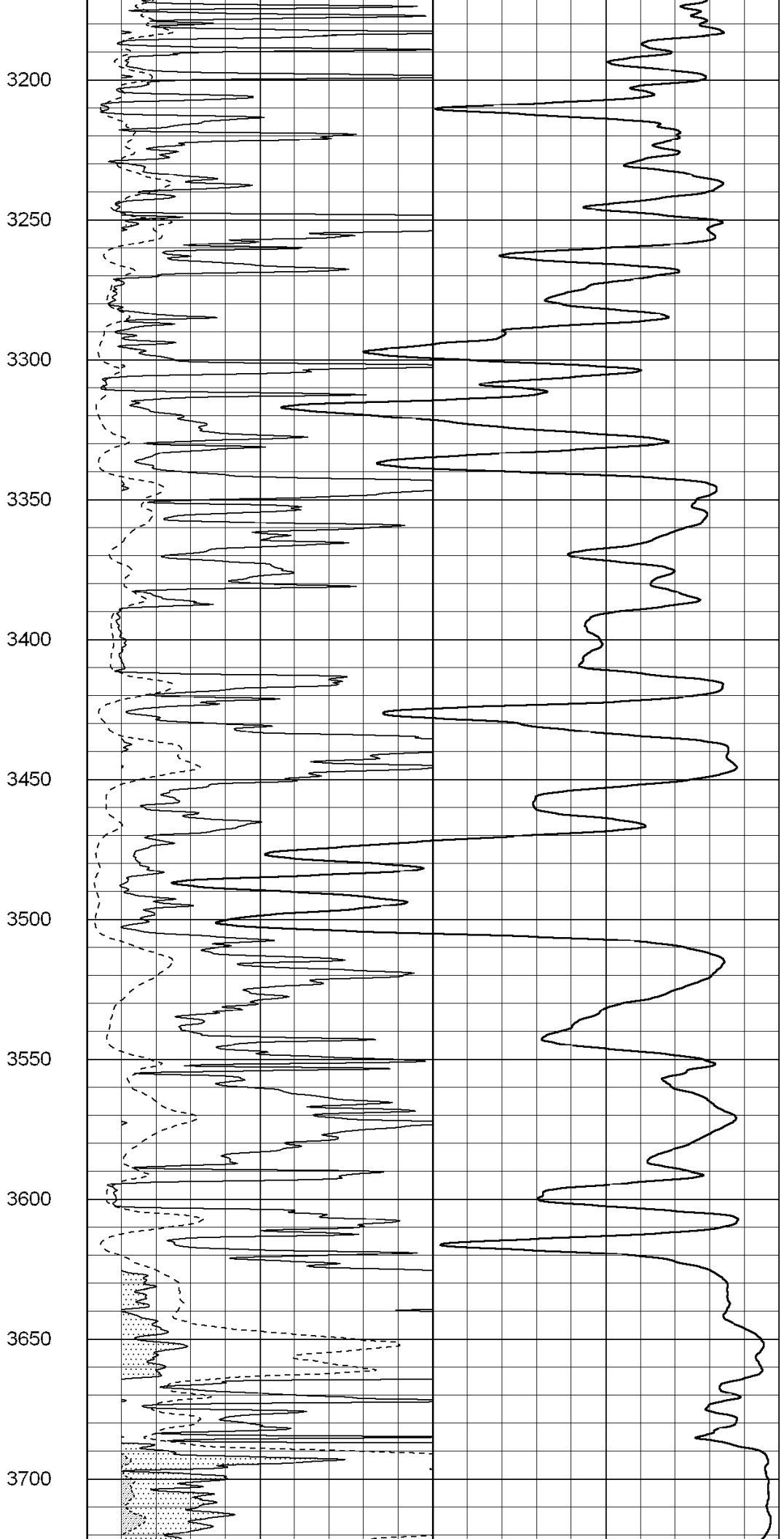
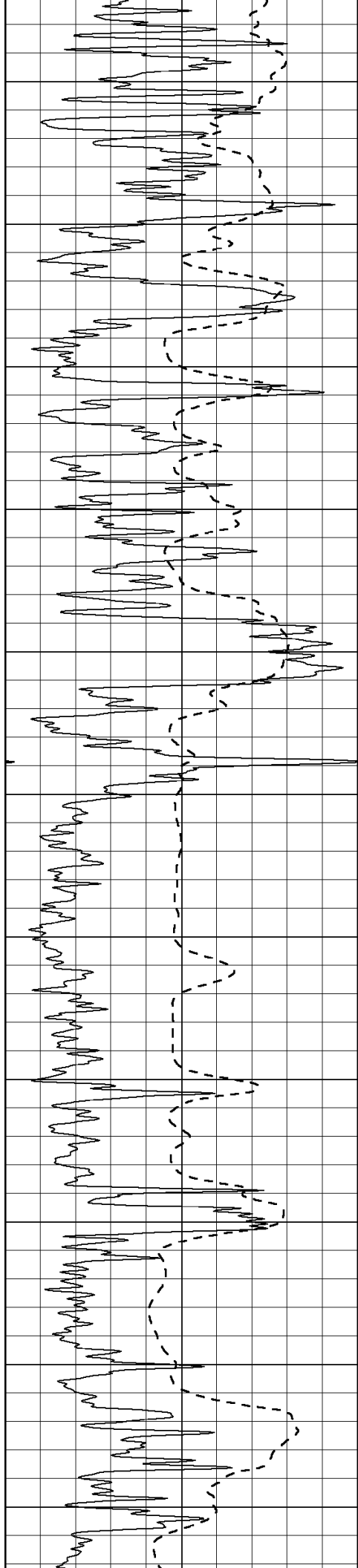
2000

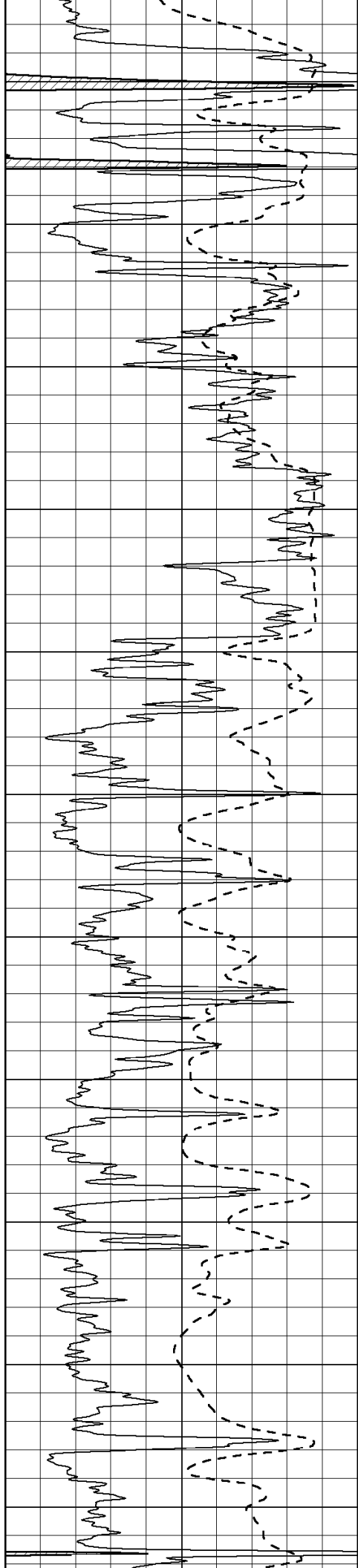
2050











3750

3800

3850

3900

3950

4000

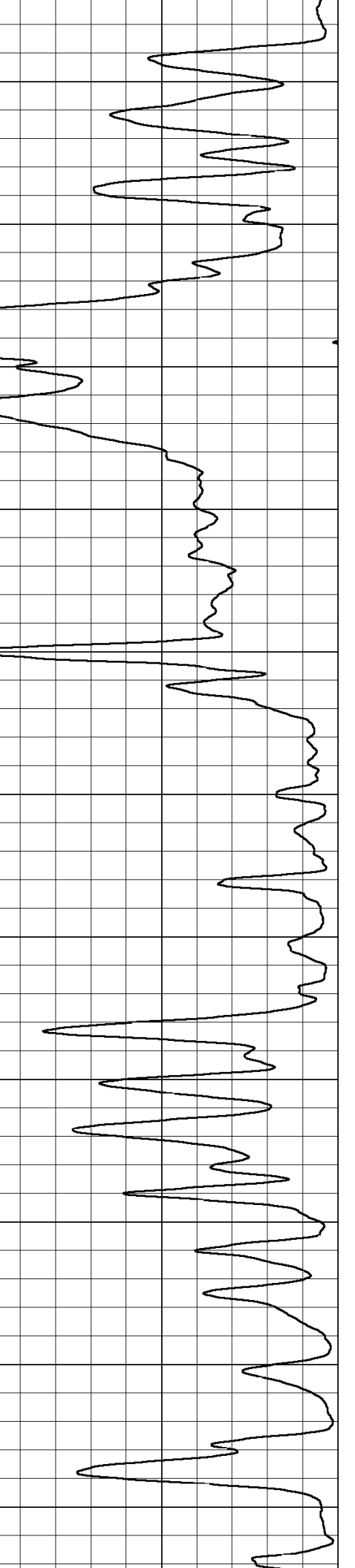
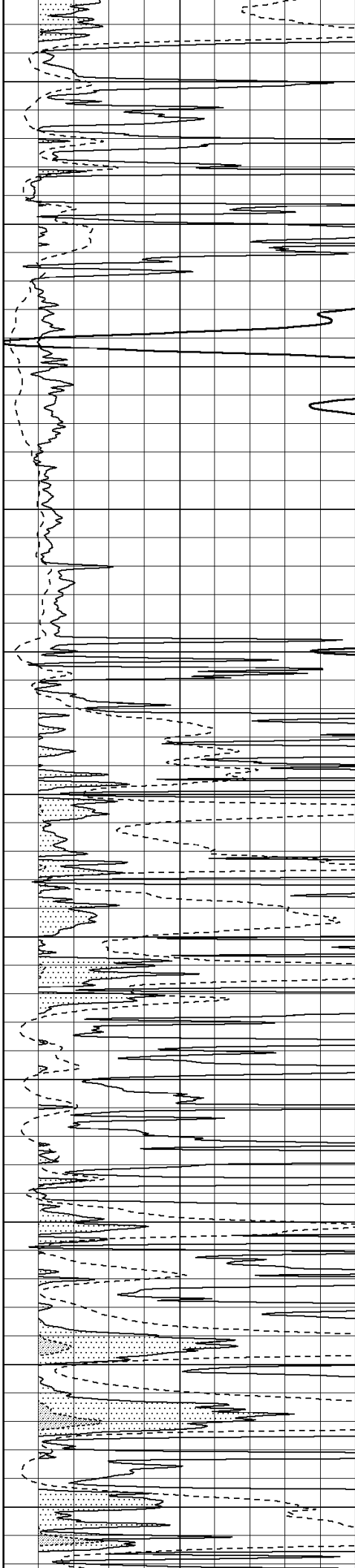
4050

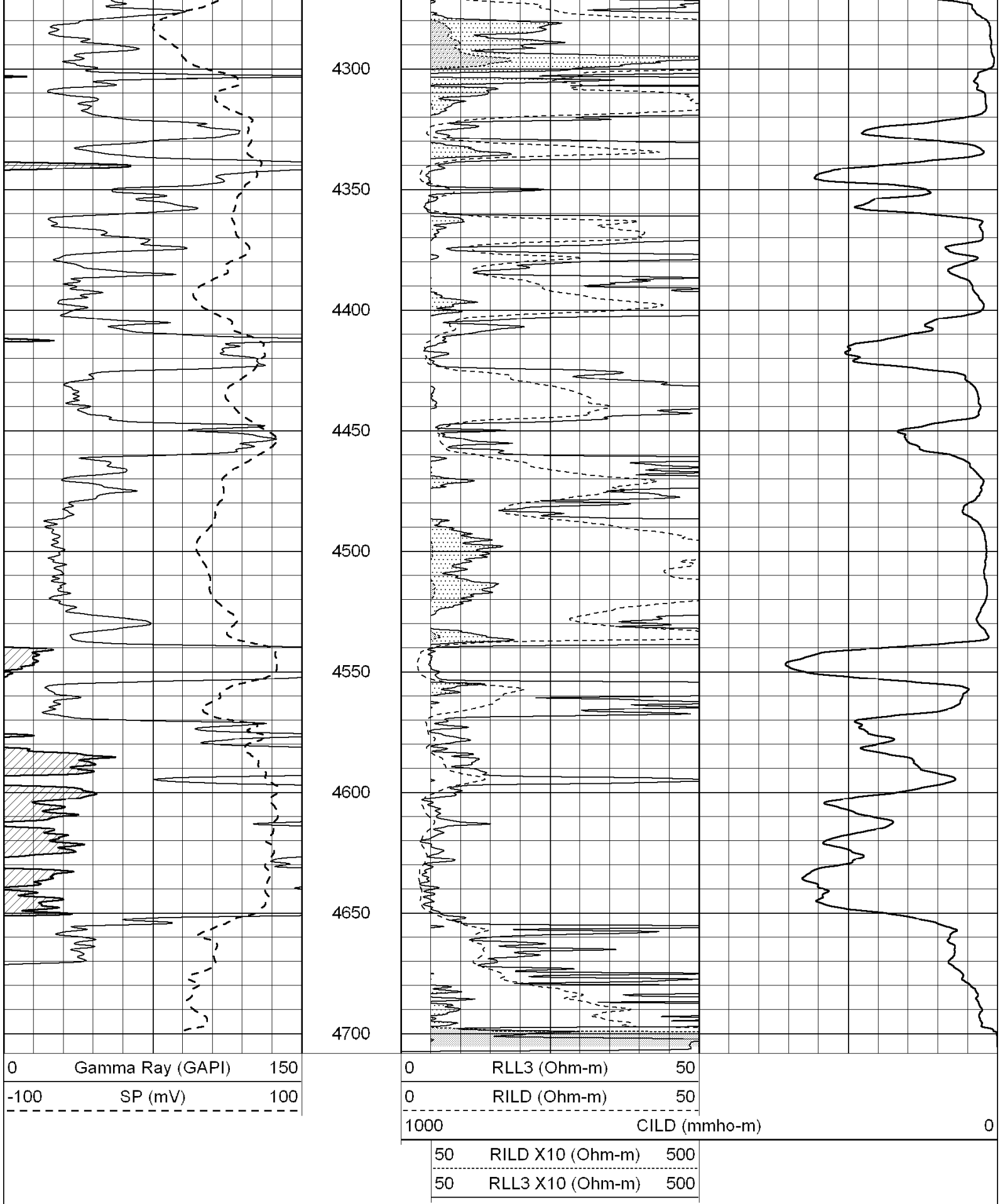
4100

4150

4200

4250





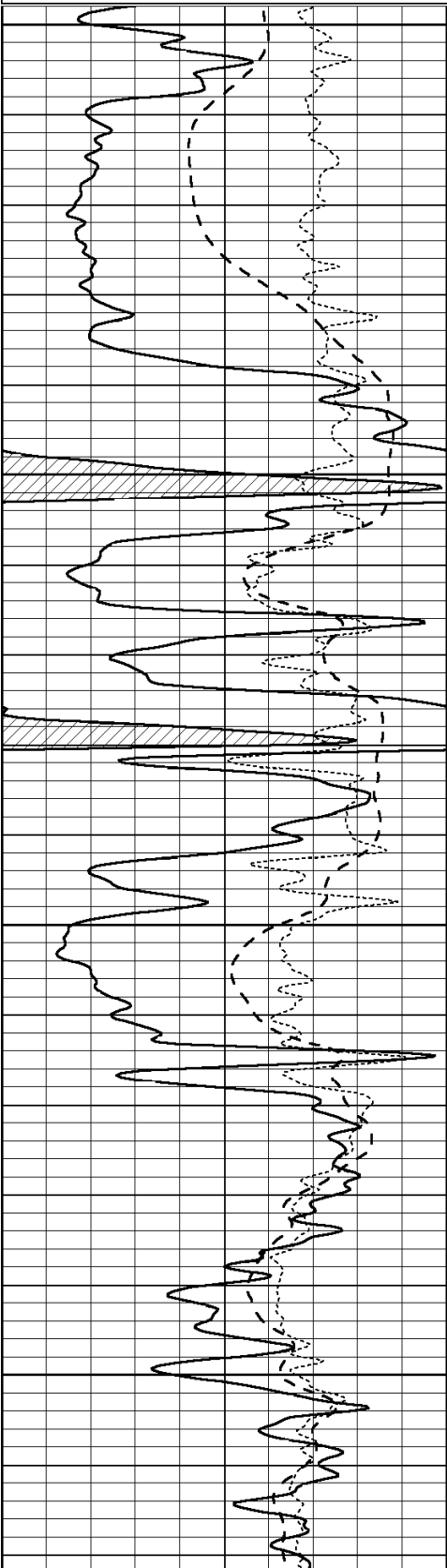
SUPERIOR
Hays,
Kansas

MAIN SECTION

Database File: 003272pe.db
 Dataset Pathname: pass3.8
 Presentation Format: dil
 Dataset Creation: Mon Jun 01 20:48:58 2009 by Calc Open-Cased 060407
 Charted by: Depth in Feet scaled 1:240

0	GAMMA RAY (GAPI)	150
-100	SP (mV)	100
-250	Rxo/Rt	50

0.2	SHALLOW GUARD (Ohm-m)	2000
0.2	DEEP INDUCTION (Ohm-m)	2000
0.2	MEDIUM INDUCTION (Ohm-m)	2000

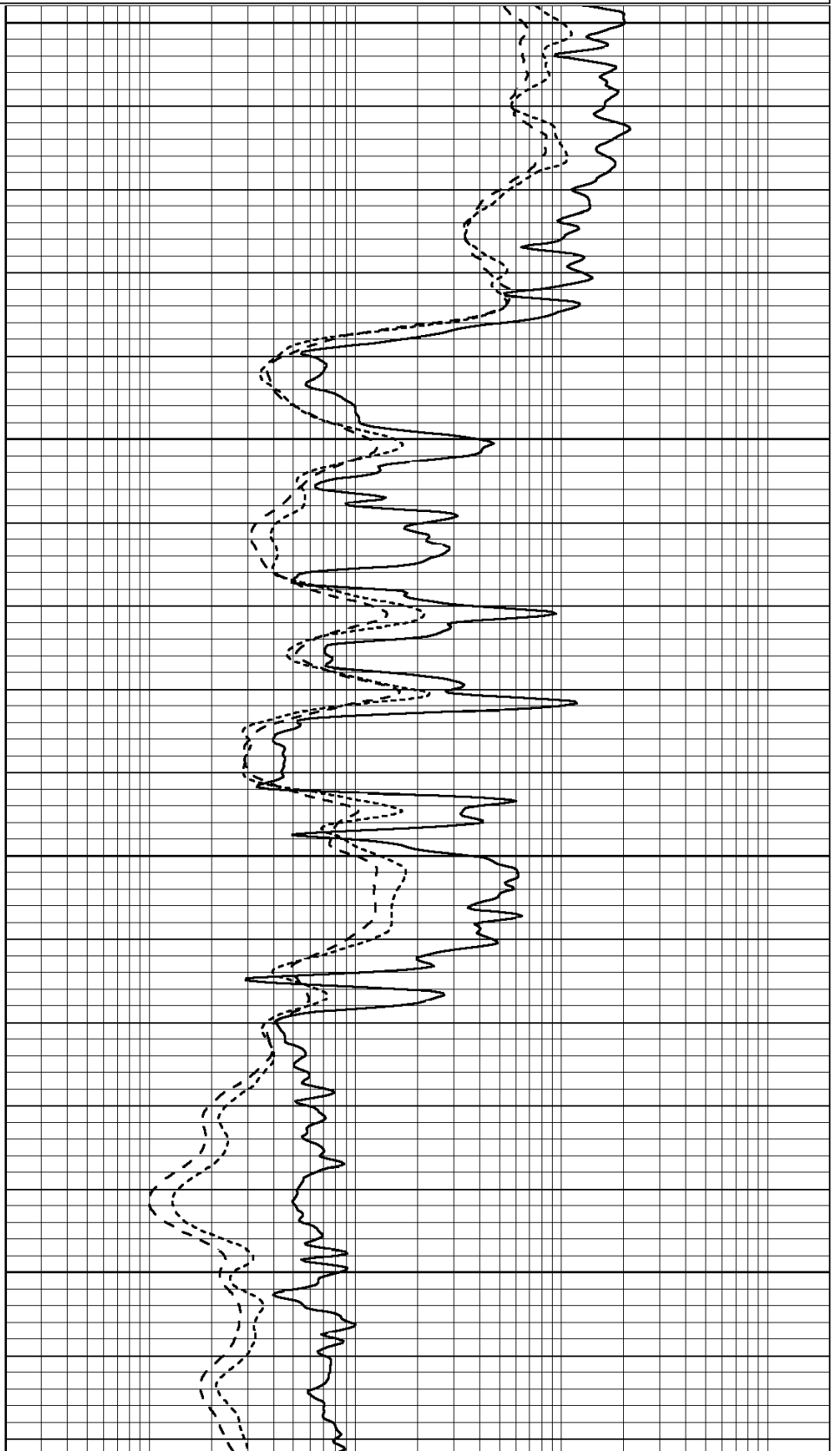


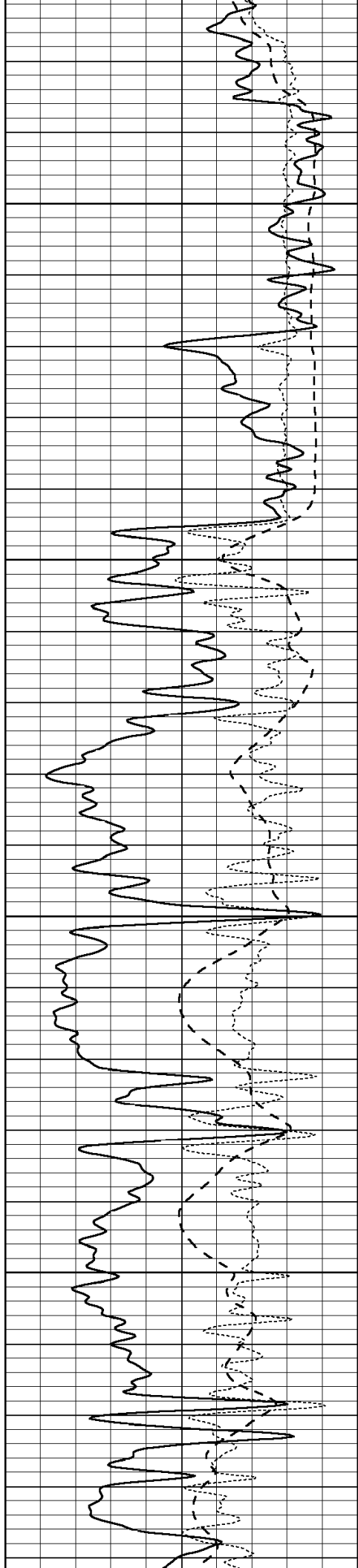
3700

3750

3800

3850



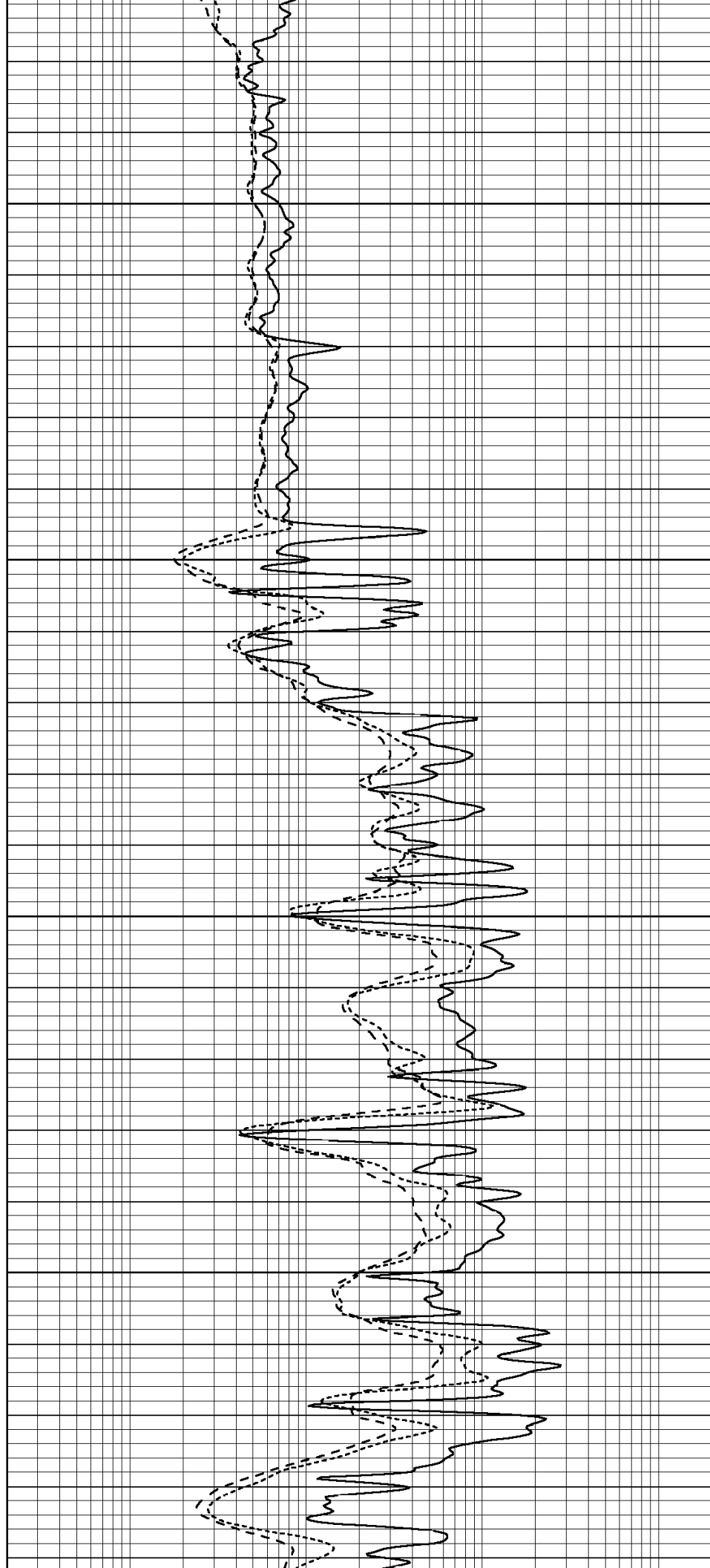


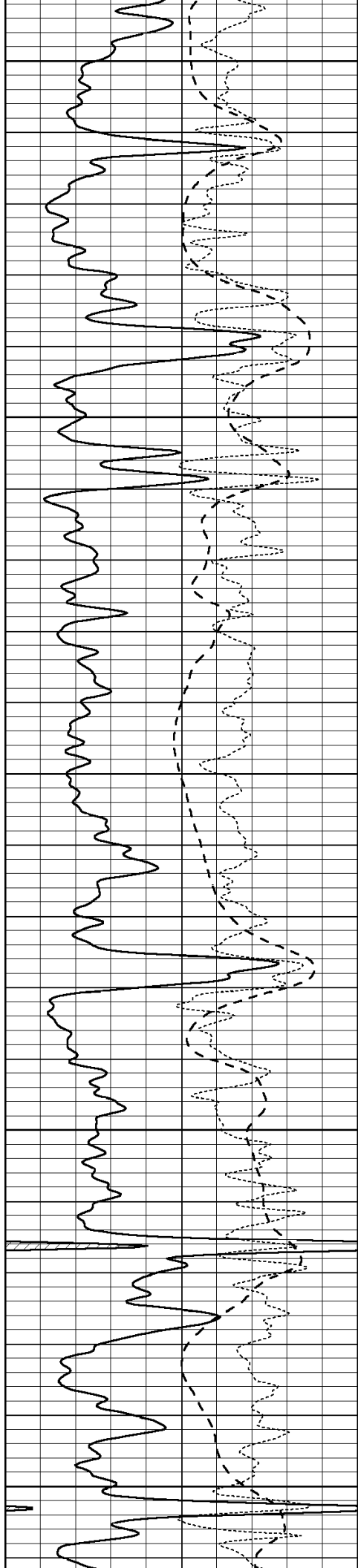
3900

3950

4000

4050





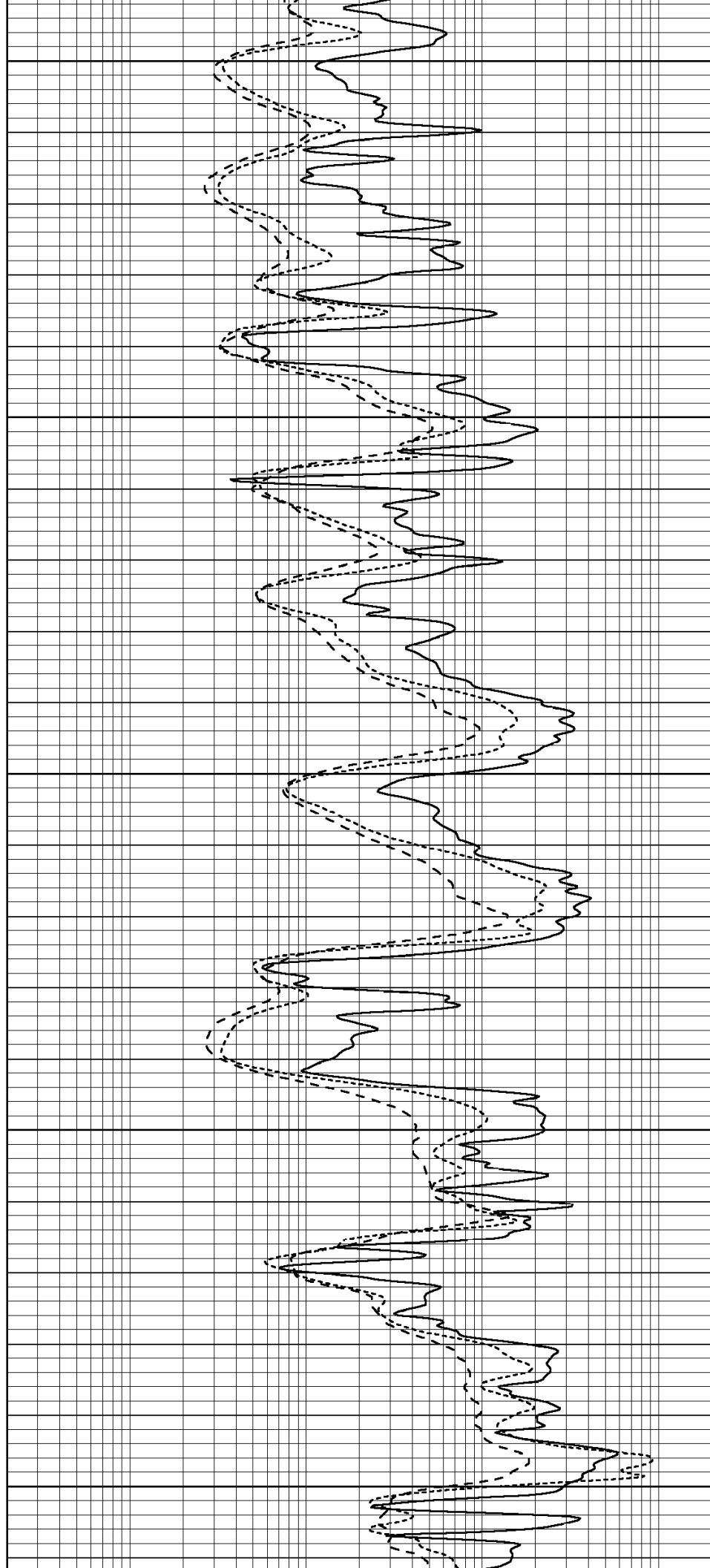
4100

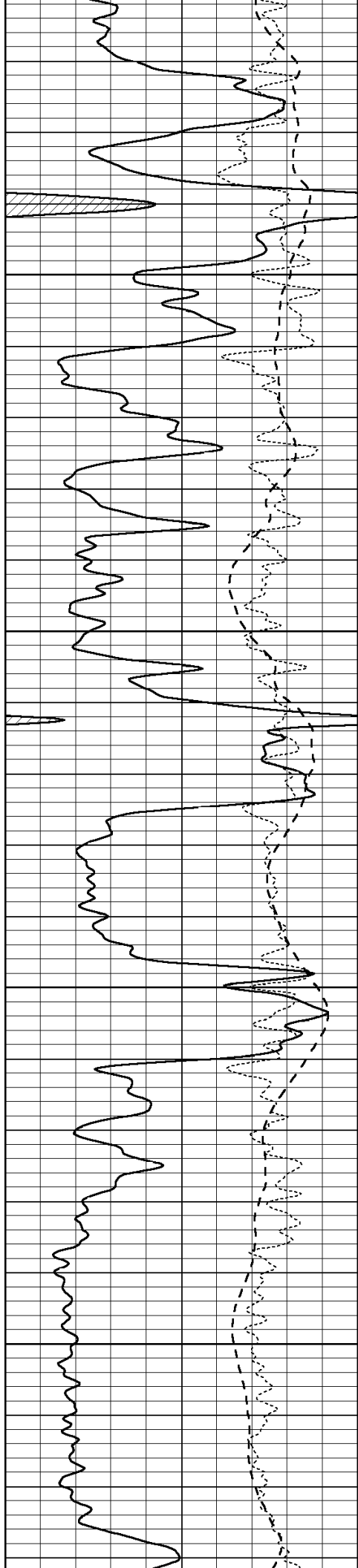
4150

4200

4250

4300



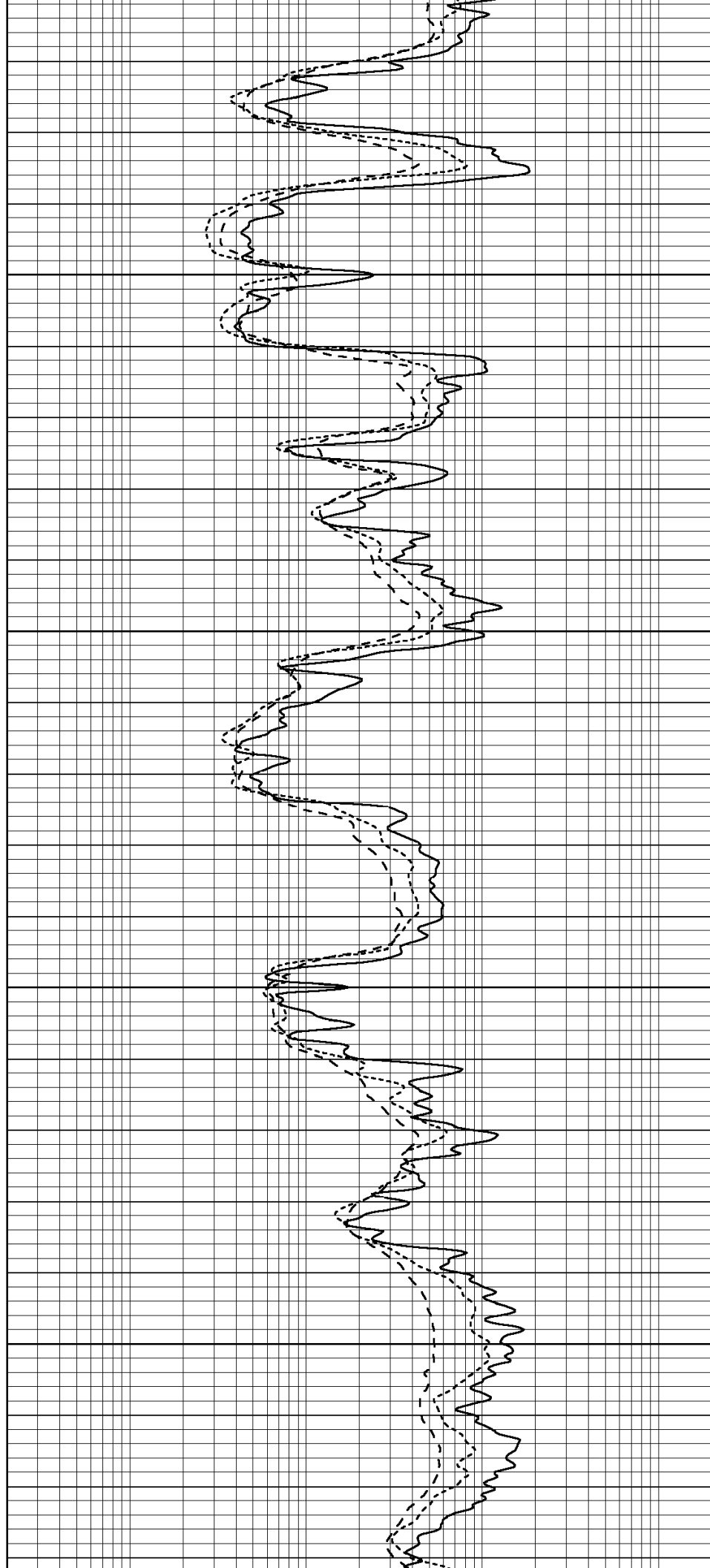


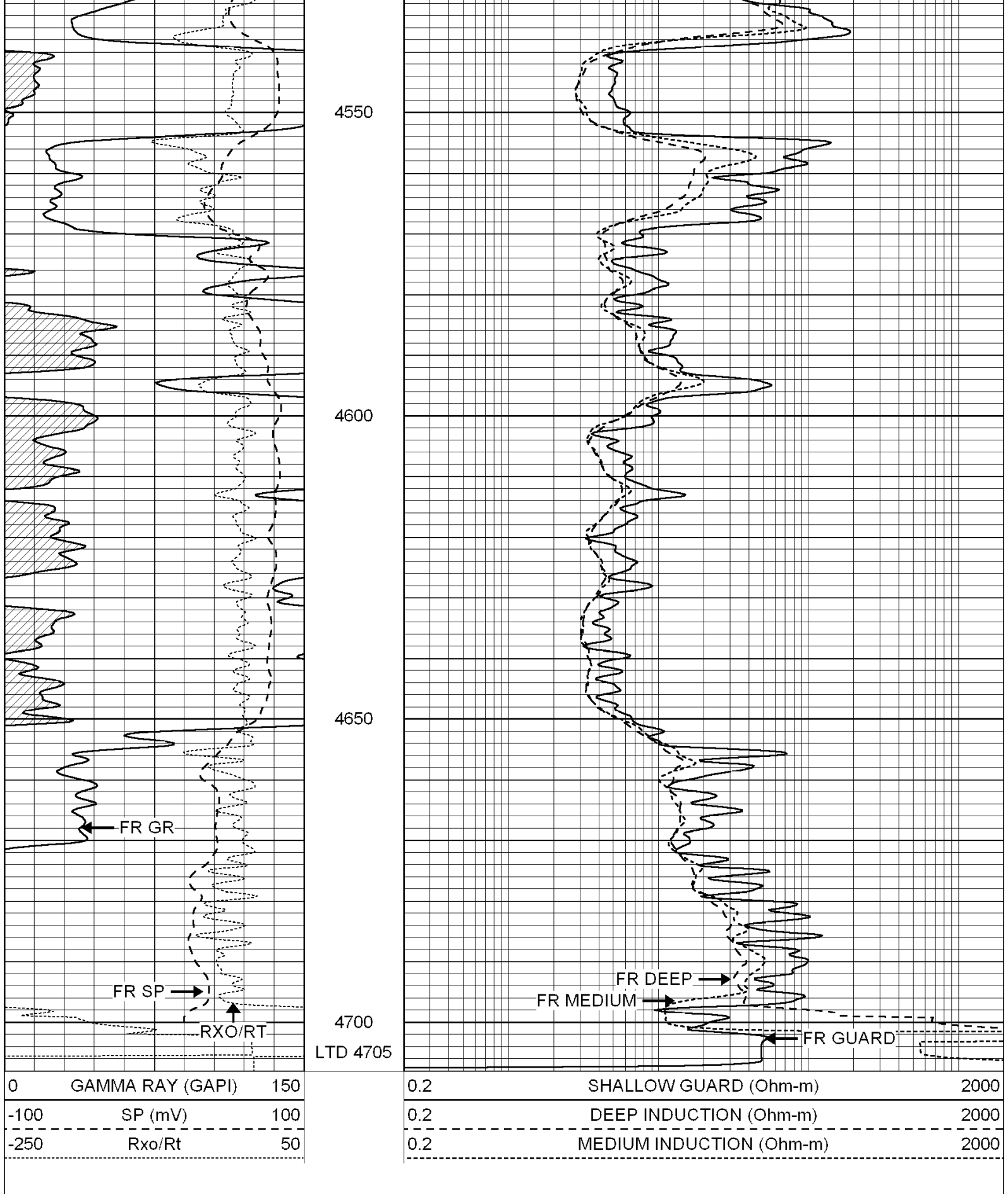
4350

4400

4450

4500





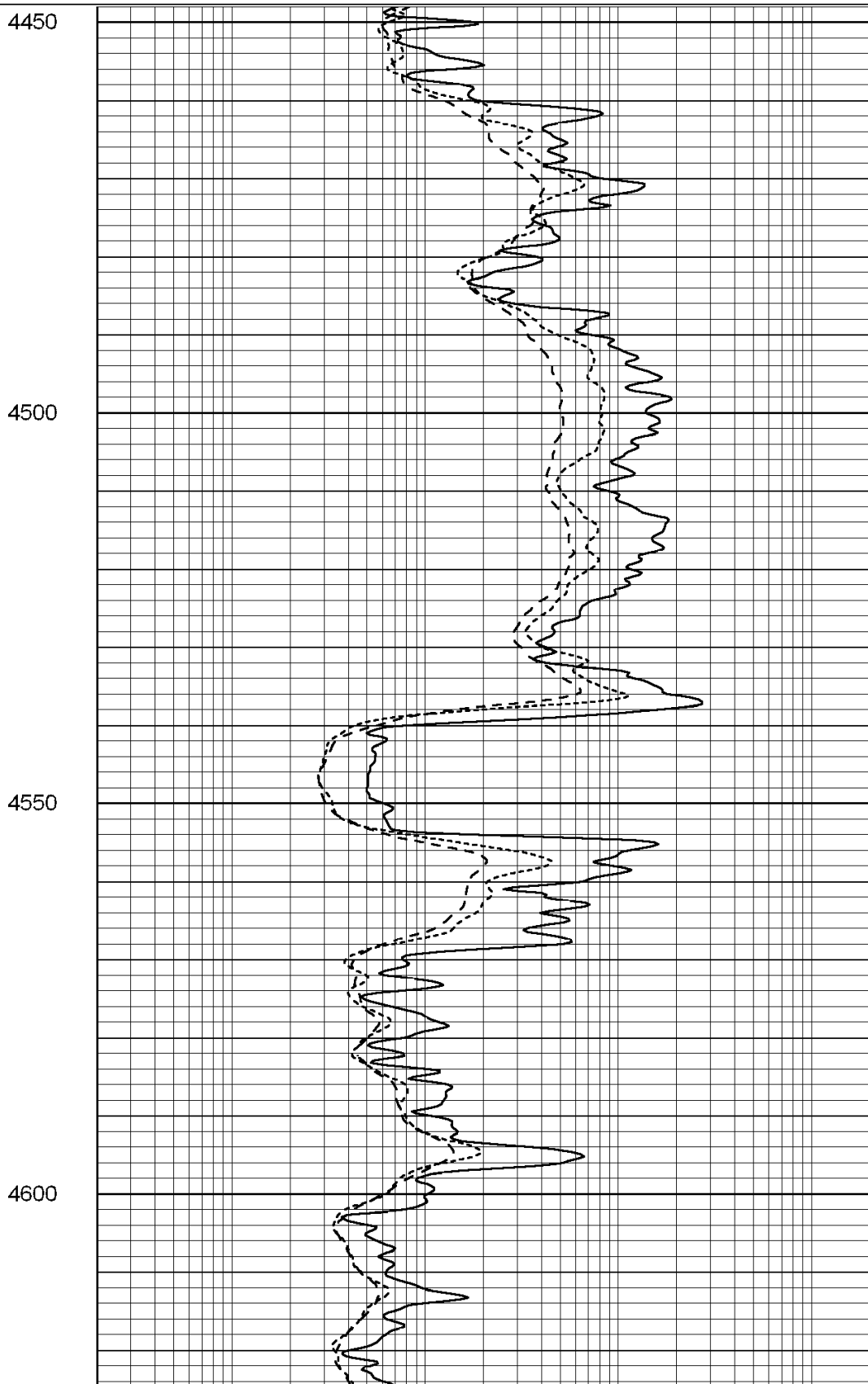
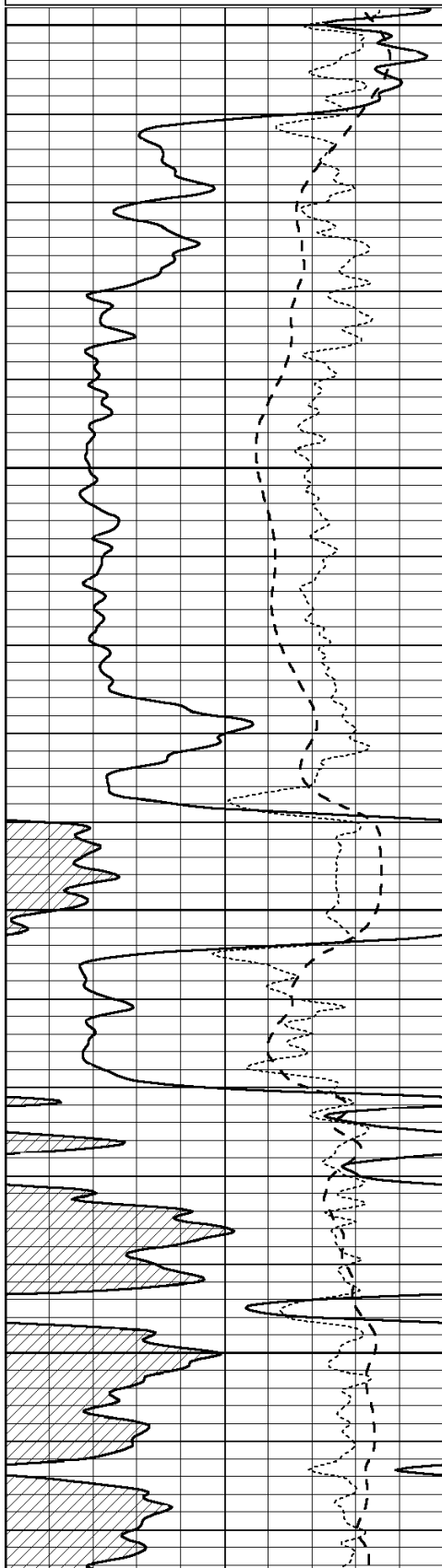
SUPERIOR
Hays,
Kansas

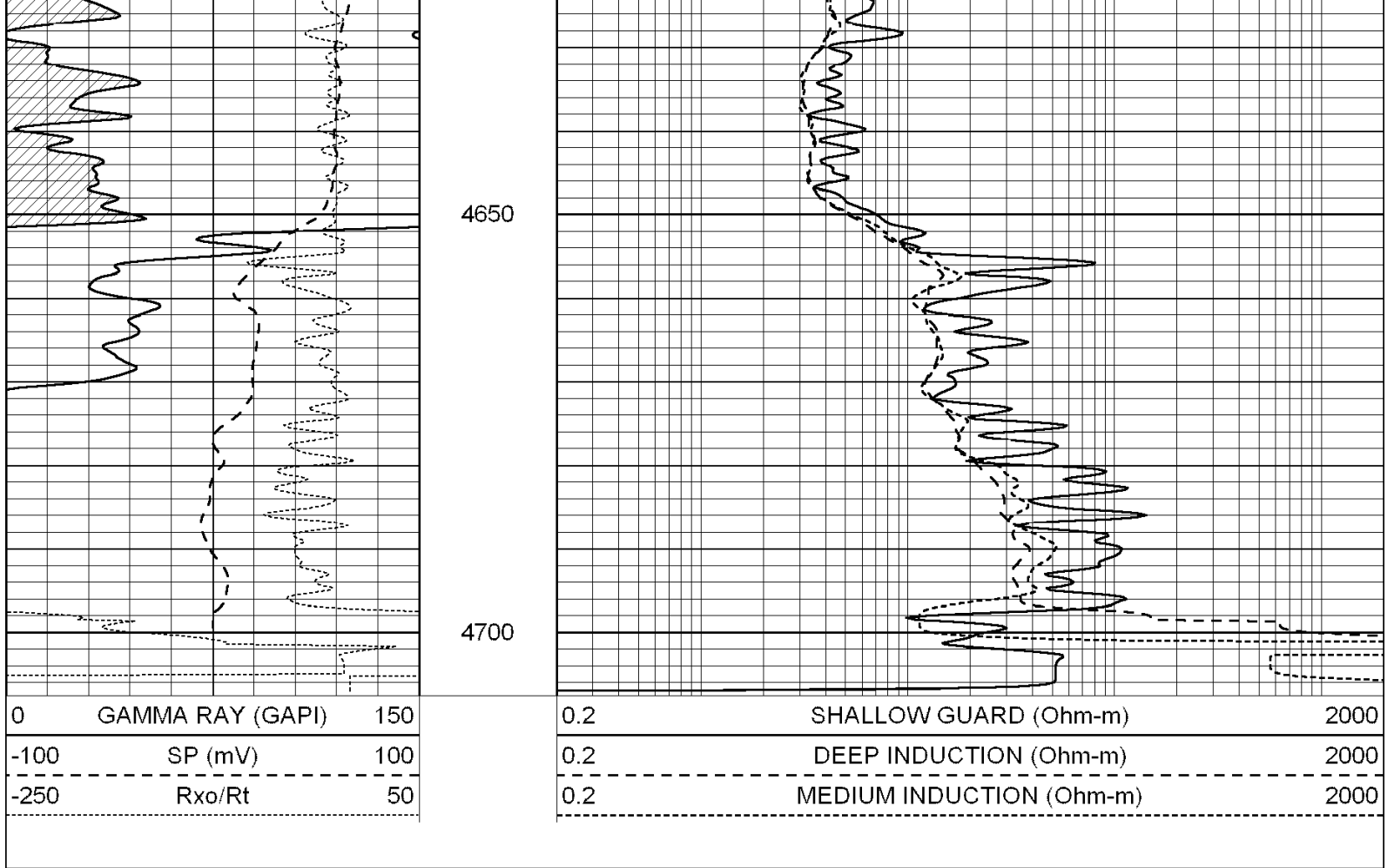
REPEAT SECTION

Database File: 003272pe.db
 Dataset Pathname: pass2.7
 Presentation Format: dil
 Dataset Creation: Mon Jun 01 20:23:27 2009 by Calc Open-Cased 060407
 Charted by: Depth in Feet scaled 1:240

0	GAMMA RAY (GAPI)	150
-100	SP (mV)	100
-250	Rxo/Rt	50

0.2	SHALLOW GUARD (Ohm-m)	2000
0.2	DEEP INDUCTION (Ohm-m)	2000
0.2	MEDIUM INDUCTION (Ohm-m)	2000





Calibration Report

Database File: 003272pe.db
 Dataset Pathname: pass3.8
 Dataset Creation: Mon Jun 01 20:48:58 2009 by Calc Open-Cased 060407

Dual Induction Calibration Report

Serial-Model: DIL2-GEAR
 Performed: Mon Jun 01 19:17:23 2009

Loop:	Readings			References			Results	
	Air	Loop		Air	Loop		m	b
Deep	0.002	0.667	V	0.000	400.000	mmho-m	650.000	5.000
Medium	-0.003	0.739	V	0.000	462.500	mmho-m	750.000	-16.000
Internal:	Zero	Cal		Zero	Cal		m	b
Deep	0.001	0.658	V	0.000	400.000	mmho-m	609.010	-0.700
Medium	0.015	0.761	V	0.000	462.500	mmho-m	620.392	-9.326

Litho Density Calibration Report

Serial: 003N Model: PRB
 Performed Wed Feb 18 13:47:54 2009

Litho Density Calibration

	Background	Magnesium	Aluminum	Sandstone	
Window 1	2040.8	12807.7	4363.1	13737.9	cps
Window 2	1833.5	9910.0	3570.0	10363.1	cps
Window 3	1572.8	6142.6	2530.0	6298.3	cps
Window 4	471.2	473.7	466.8	470.3	cps

Long Space	0.0	8076.4	1736.5	8529.6	cps
Short Space	2.2	3464.4	2249.4	3602.7	cps
Rho		1.7100	2.5900	1.3800	g/cc
Pe			2.5700	1.5500	

Rib Angle	: 44.3	Rib Slope	: 0.976	Density/Spine Ratio	: 0.551
Spine Angle	: 74.3	Spine Slope	: 3.559	Spine Intercept	: -20.0

Caliper		Readings	Reference	
Low Ref		2.1	6.3	
High Ref		4.4	14.0	
		Gain: 3.3		Offset: -0.5

Compensated Neutron Calibration Report

Serial Number:	NEU_3I
Tool Model:	G

CALIBRATION

Detector	Readings	Target	Normalization
Short Space	997.00 cps	1000.00 cps	1.0000
Long Space	986.00 cps	1000.00 cps	1.0000

Gamma Ray Calibration Report

Serial Number:	GR3
Tool Model:	OPEN
Performed:	Mon Jun 01 19:18:52 2009
Calibrator Value:	200.0 GAPI
Background Reading:	3.0 cps
Calibrator Reading:	186.0 cps
Sensitivity:	0.4500 GAPI/cps