



SUPERIOR
Hays,
Kansas

MICRO
LOG

Company CAPTIVA ENERGY, LLC.
Well MEIGS TRUST #1-5
Field WILDCAT
County PRATT
State KANSAS

Company CAPTIVA ENERGY, LLC.
Well MEIGS TRUST #1-5
Field WILDCAT
County PRATT State KANSAS

Location: API #: 15-151-22333-0000
664' FSL & 1175' FWL
SEC 5 TWP 29S RGE 13W
Permanent Datum GROUND LEVEL Elevation 1956
Log Measured From KELLY BUSHING 13' A.G.L.
Drilling Measured From KELLY BUSHING
Other Services
CDL/CNL
DIL/SONIC
Elevation
K.B. 1969
D.F. 1967
G.L. 1956

| | | | |
|------------------------------|---------------|---------------------|--|
| Date | 6/1/09 | | |
| Run Number | TWO | | |
| Depth Driller | 4704 | | |
| Depth Logger | 4705 | | |
| Bottom Logged Interval | 4682 | | |
| Top Log Interval | 3700 | | |
| Casing Driller | 13 3/8"@248' | | |
| Casing Logger | 250 | | |
| Bit Size | 7 7/8 | | |
| Type Fluid In Hole | CHEMICAL MUD | CHLORIDES 7.700 PPM | |
| Density / Viscosity | 9.2/60 | | |
| pH / Fluid Loss | 9.0/9.6 | | |
| Source of Sample | FLOWLINE | | |
| Rm @ Meas. Temp | .700@77F | | |
| Rmf @ Meas. Temp | .525@77F | | |
| Rmc @ Meas. Temp | .840@77F | | |
| Source of Rmf / Rmc | MEASUREMENT | | |
| Rm @ BHT | .442@122F | | |
| Time Circulation Stopped | 4.5 HOURS | | |
| Time Logger on Bottom | 7:30 P.M. | | |
| Maximum Recorded Temperature | 122F | | |
| Equipment Number | 0836 | | |
| Location | HAYS, KANSAS | | |
| Recorded By | JEFF LUEBBERS | | |
| Witnessed By | KEITH REAVIS | | |

<<< Fold Here >>>

All interpretations are opinions based on inferences from electrical or other measurements and we cannot and do not guarantee the accuracy or correctness of any interpretation, and we shall not, except in the case of gross or willful negligence on our part, be liable or responsible for any loss, costs, damages, or expenses incurred or sustained by anyone resulting from any interpretation made by any of our officers, agents or employees. These interpretations are also subject to our general terms and conditions set out in our current Price Schedule.

Comments

THANK YOU FOR USING SUPERIOR WELL SERVICE HAYS, KANSAS (785) 628-6395
DIRECTIONS
PRATT, KS. 6S. ON HWY 281, 1 3/4W., N. INTO

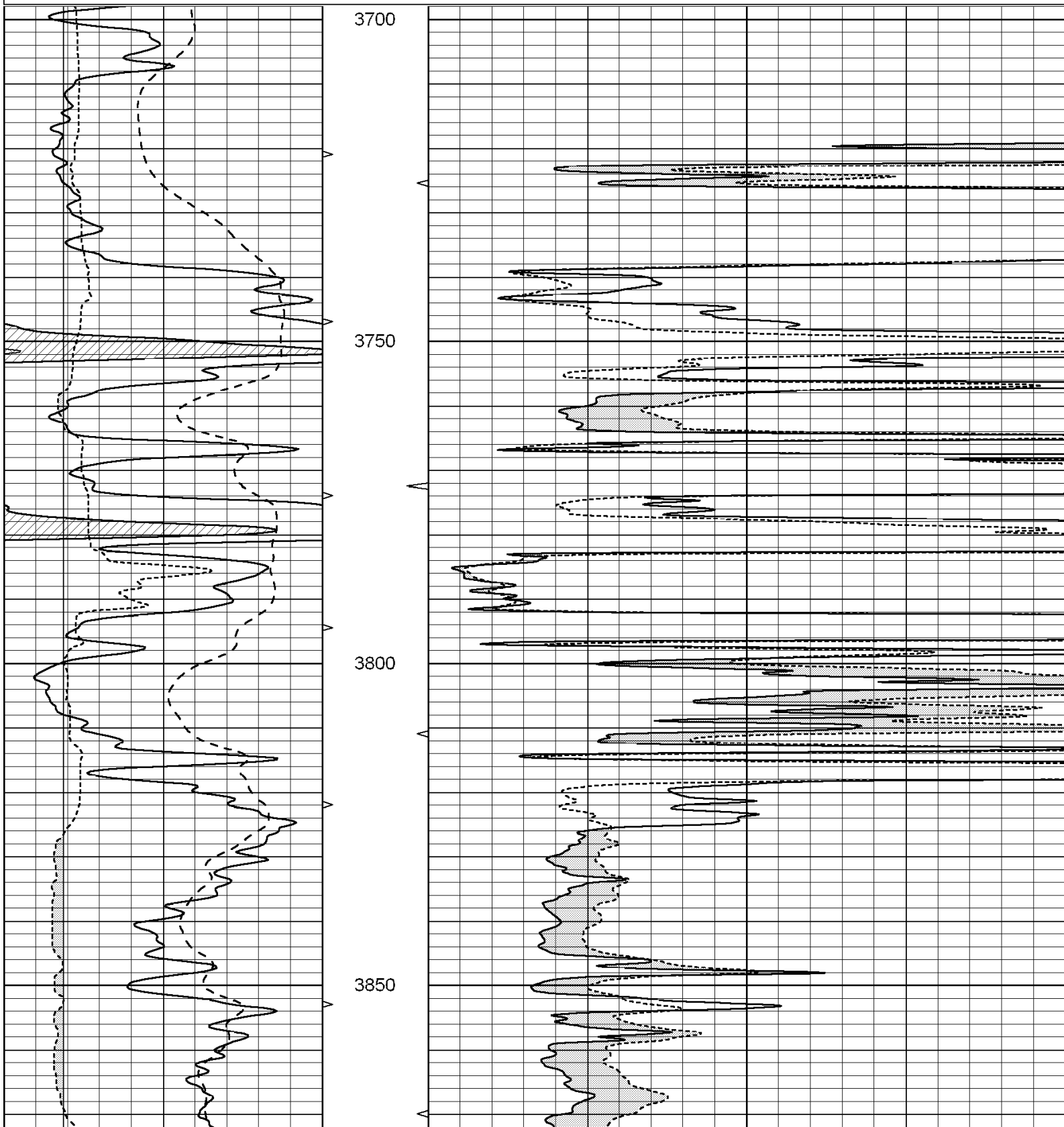


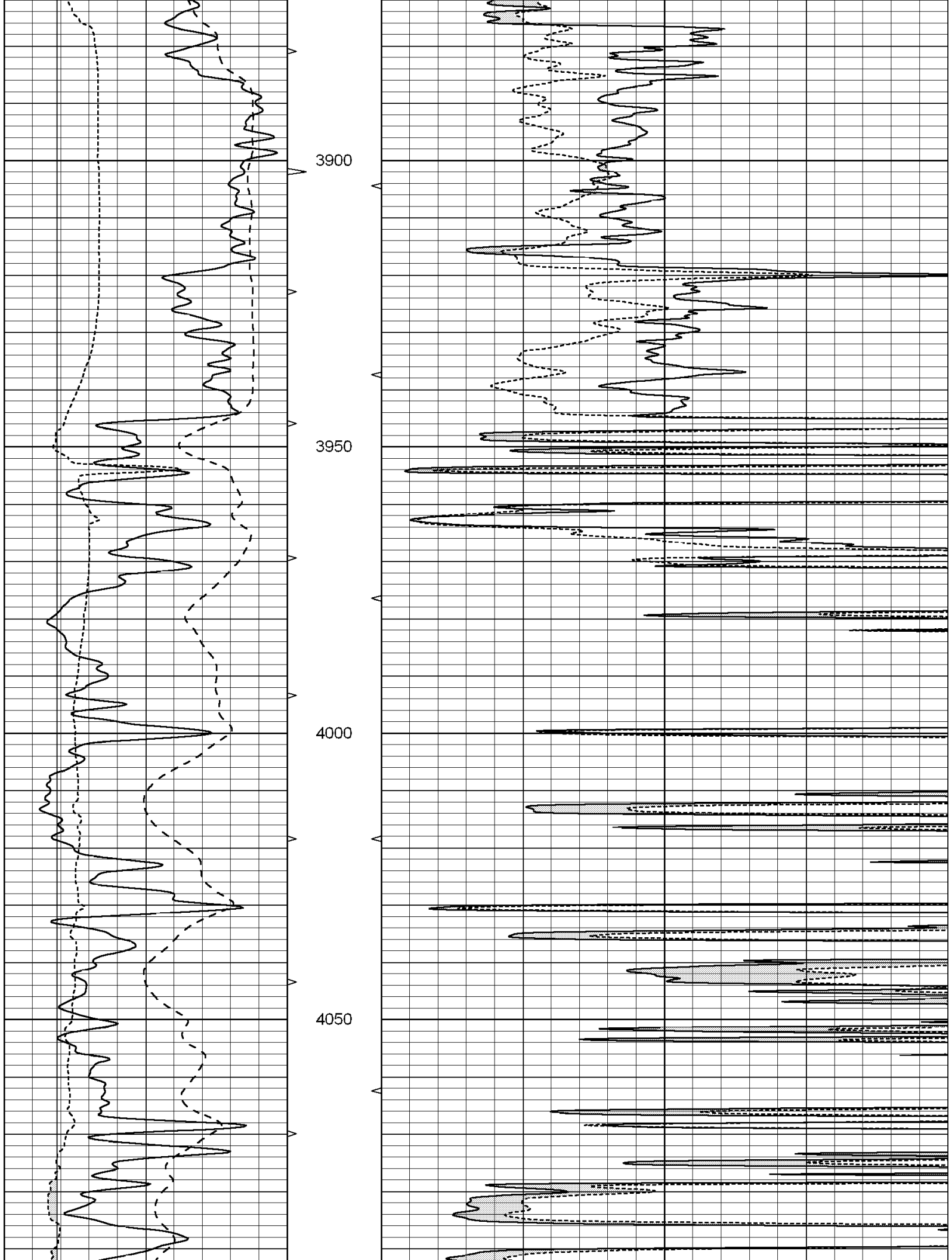
SUPERIOR
Hays,
Kansas

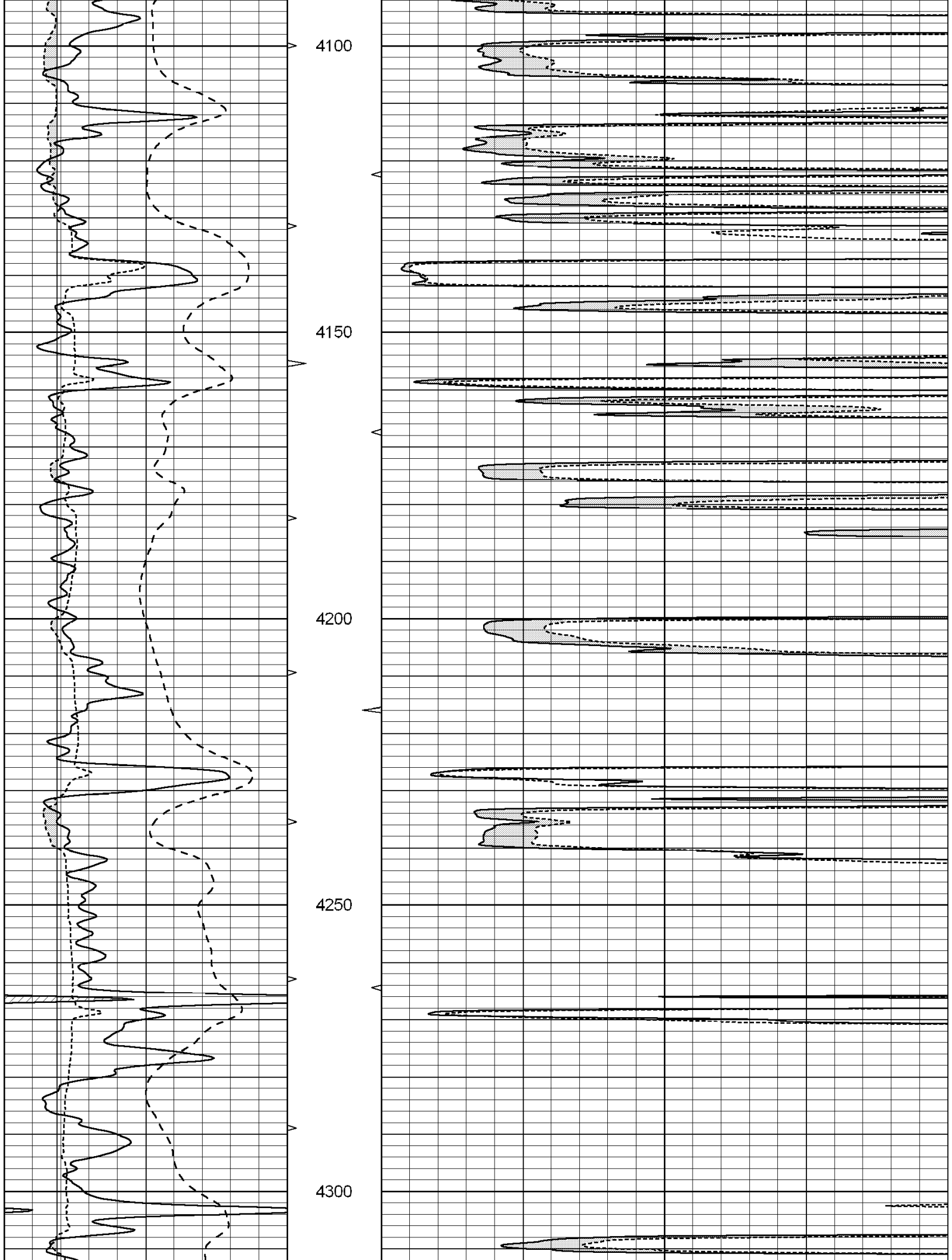
MAIN SECTION

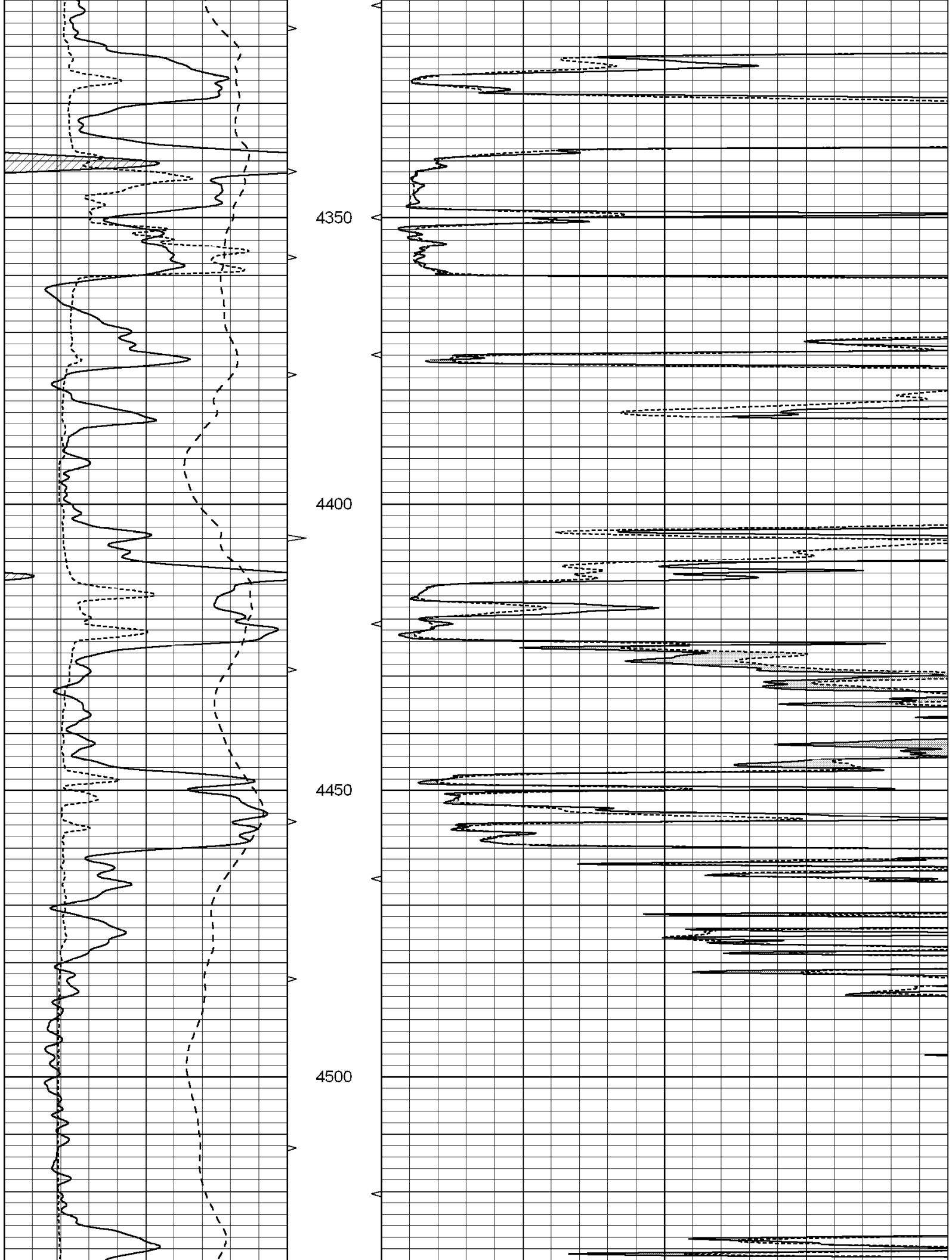
Database File: 003272pe.db
 Dataset Pathname: pass6.2
 Presentation Format: micro
 Dataset Creation: Mon Jun 01 22:28:06 2009
 Charted by: Depth in Feet scaled 1:240

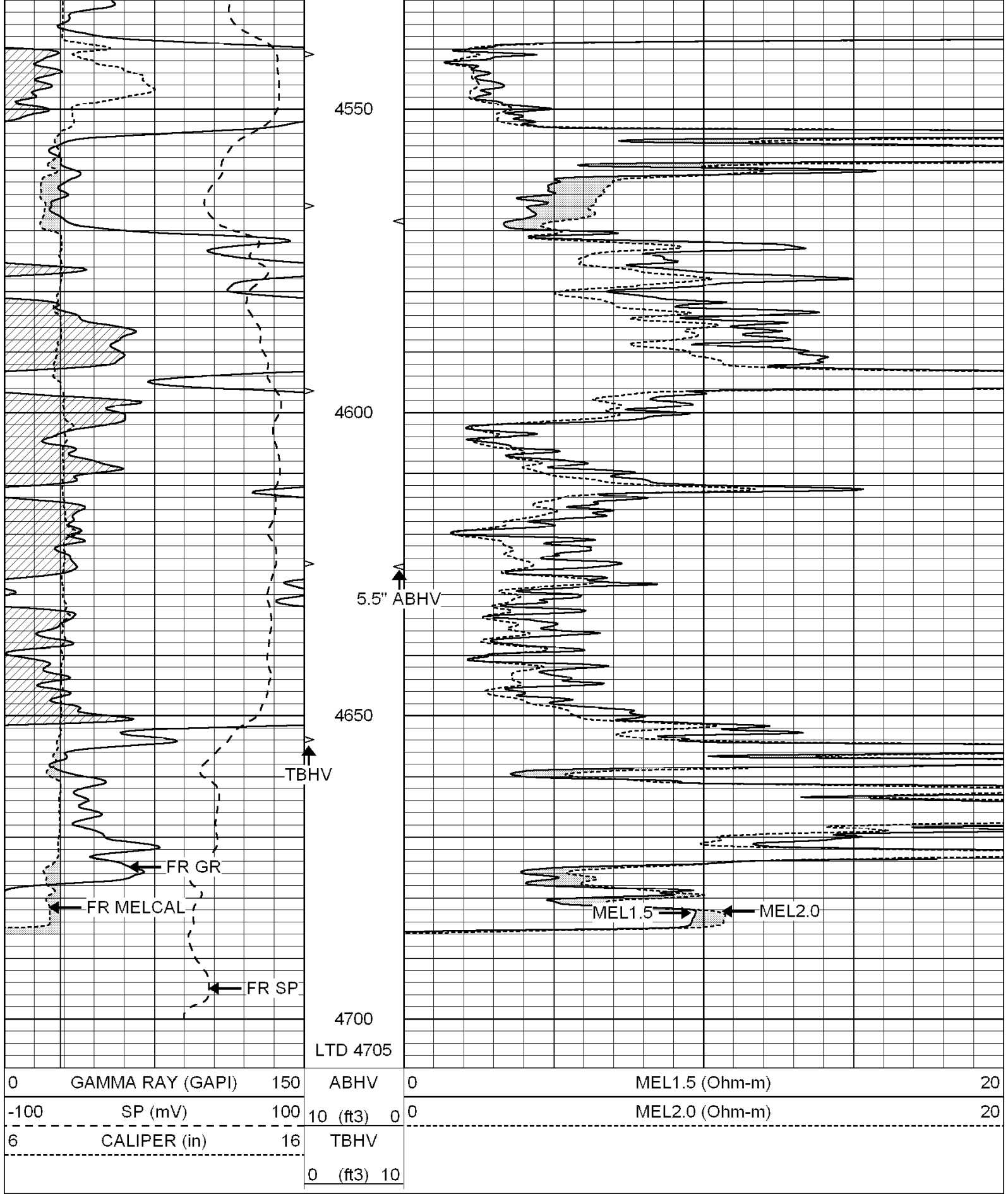
| | | | | | | |
|------|------------------|-----|------------|---|----------------|----|
| 0 | GAMMA RAY (GAPI) | 150 | ABHV | 0 | MEL1.5 (Ohm-m) | 20 |
| -100 | SP (mV) | 100 | 10 (ft3) 0 | 0 | MEL2.0 (Ohm-m) | 20 |
| 6 | CALIPER (in) | 16 | TBHV | | | |
| | | | 0 (ft3) 10 | | | |









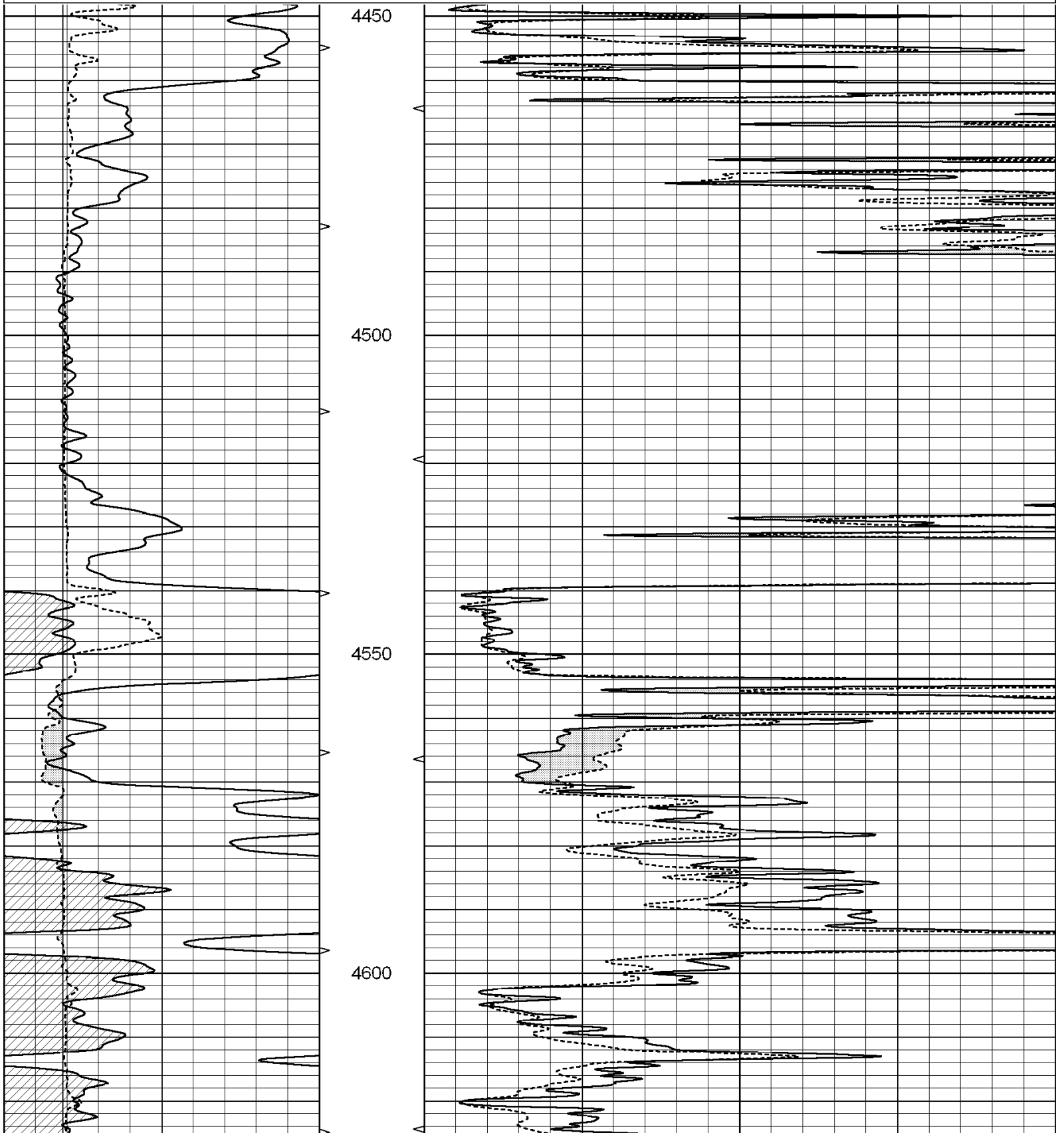


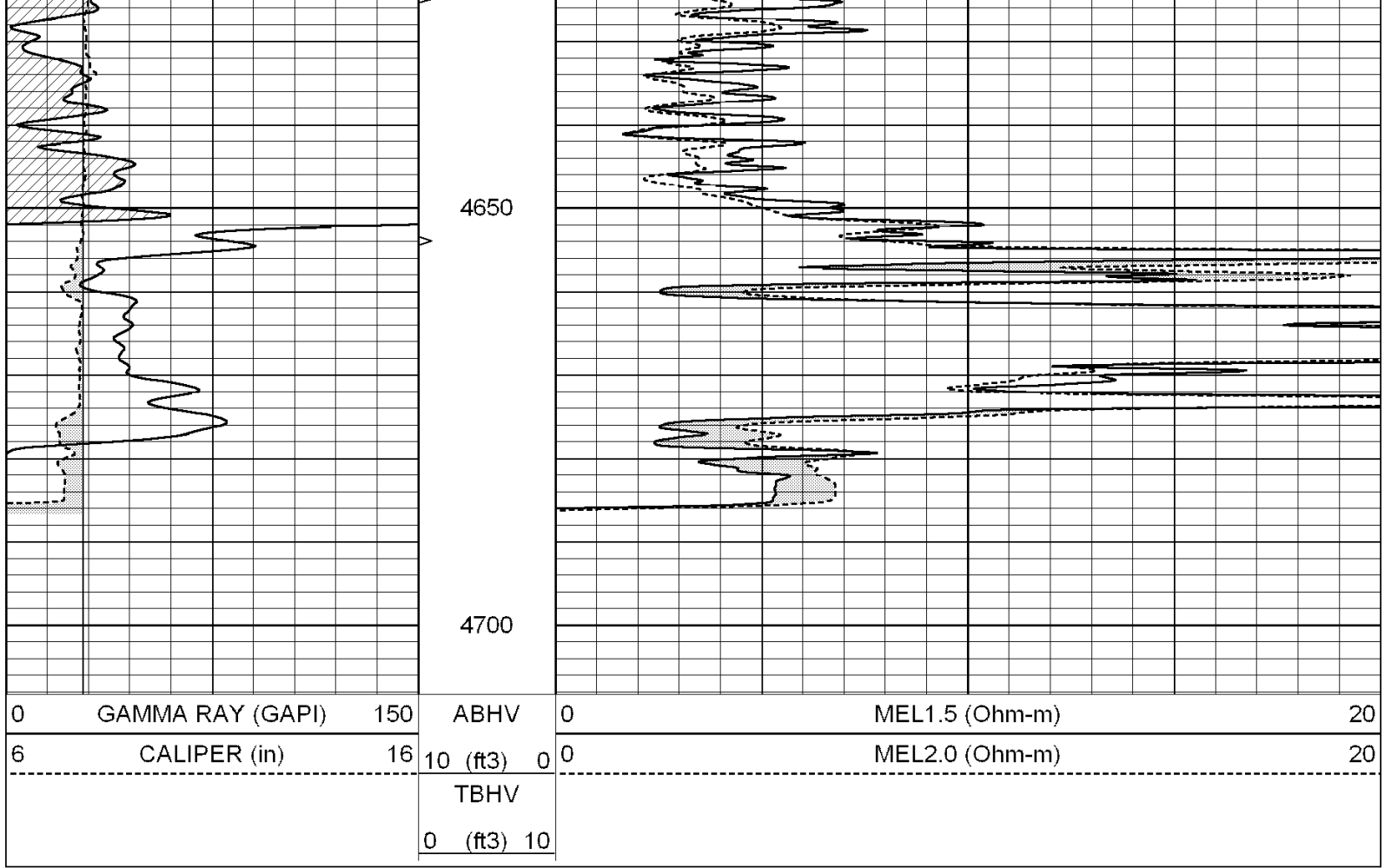
SUPERIOR
Hays,
Kansas

REPEAT SECTION

Database File: 003272pe.db
 Dataset Pathname: pass5.4
 Presentation Format: micro
 Dataset Creation: Mon Jun 01 21:46:24 2009 by Calc Open-Cased 060407
 Charted by: Depth in Feet scaled 1:240

| | | | | | | |
|---|------------------|-----|------------|---|----------------|----|
| 0 | GAMMA RAY (GAPI) | 150 | ABHV | 0 | MEL1.5 (Ohm-m) | 20 |
| 6 | CALIPER (in) | 16 | 10 (ft3) 0 | 0 | MEL2.0 (Ohm-m) | 20 |
| | | | TBHV | | | |
| | | | 0 (ft3) 10 | | | |





Calibration Report

Database File: 003272pe.db
 Dataset Pathname: pass6.2
 Dataset Creation: Mon Jun 01 22:28:06 2009

MICRO Calibration Report

| | | |
|----------------------|--------------------------|---------------|
| Serial Number: | MICRO5 | |
| Tool Model: | PROBE | |
| Performed: | Mon Jun 01 21:46:59 2009 | |
| Caliper Calibration: | Gain=3.757 | Offset=-6.497 |
| References | Low Cal | High Cal |
| Readings | 6.400 | 15.000 |
| | 3.433 | 5.721 |
| 1.5" Calibration: | Gain=33.000 | Offset=-1.300 |
| References | Low Cal | High Cal |
| Readings | 0.000 | 20.000 |
| | 0.025 | 0.991 |
| 2" Calibration: | Gain=36.000 | Offset=-1.000 |
| References | Low Cal | High Cal |
| Readings | 0.000 | 20.000 |
| | 0.018 | 0.809 |

Gamma Ray Calibration Report

Serial Number: GR3
 Tool Model: OPEN
 Performed: Mon Jun 01 21:46:56 2009

| | | |
|---------------------|--------|----------|
| Calibrator Value: | 200.0 | GAPI |
| Background Reading: | 3.0 | cps |
| Calibrator Reading: | 186.0 | cps |
| Sensitivity: | 0.8500 | GAPI/cps |