



SUPERIOR
Hays,
Kansas

SONIC
LOG

Company CAPTIVA ENERGY, LLC.
Well MEIGS TRUST #1-5
Field WILDCAT
County PRATT
State KANSAS

Company CAPTIVA ENERGY, LLC.
Well MEIGS TRUST #1-5
Field WILDCAT
County PRATT State KANSAS

Location: API #: 15-151-22333-0000
664' FSL & 1175' FWL
SEC 5 TWP 29S RGE 13W
Permanent Datum GROUND LEVEL Elevation 1956
Log Measured From KELLY BUSHING 13' A.G.L.
Drilling Measured From KELLY BUSHING
Other Services
CDL/CNL
DIL/MEL
Elevation
K.B. 1969
D.F. 1967
G.L. 1956

Date	6/1/09		
Run Number	TWO		
Depth Driller	4704		
Depth Logger	4705		
Bottom Logged Interval	4692		
Top Log Interval	200		
Casing Driller	13 3/8"@248'		
Casing Logger	250		
Bit Size	7 7/8		
Type Fluid In Hole	CHEMICAL MUD	CHLORIDES 7.700 PPM	
Density / Viscosity	9.2/60		
pH / Fluid Loss	9.0/9.6		
Source of Sample	FLOWLINE		
Rm @ Meas. Temp	.700@77F		
Rmf @ Meas. Temp	.525@77F		
Rmc @ Meas. Temp	.840@77F		
Source of Rmf / Rmc	MEASUREMENT		
Rm @ BHT	.442@122F		
Time Circulation Stopped	4.5 HOURS		
Time Logger on Bottom	7:30 P.M.		
Maximum Recorded Temperature	122F		
Equipment Number	0836		
Location	HAYS, KANSAS		
Recorded By	JEFF LUEBBERS		
Witnessed By	KEITH REAVIS		

<<< Fold Here >>>

All interpretations are opinions based on inferences from electrical or other measurements and we cannot and do not guarantee the accuracy or correctness of any interpretation, and we shall not, except in the case of gross or willful negligence on our part, be liable or responsible for any loss, costs, damages, or expenses incurred or sustained by anyone resulting from any interpretation made by any of our officers, agents or employees. These interpretations are also subject to our general terms and conditions set out in our current Price Schedule.

Comments

THANK YOU FOR USING SUPERIOR WELL SERVICE HAYS, KANSAS (785) 628-6395
DIRECTIONS
PRATT, KS. 6S. ON HWY 281, 1 3/4W., N. INTO

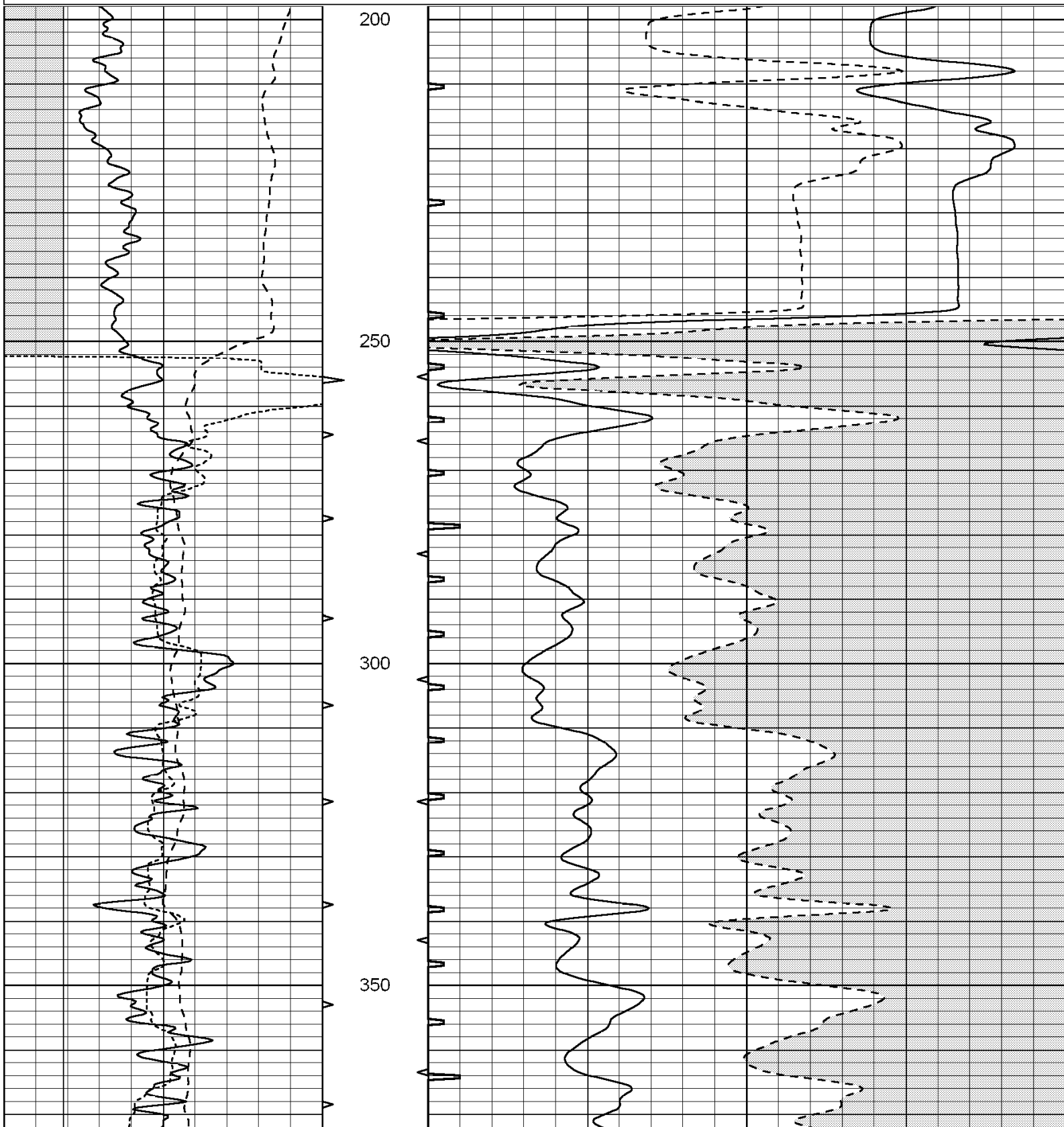


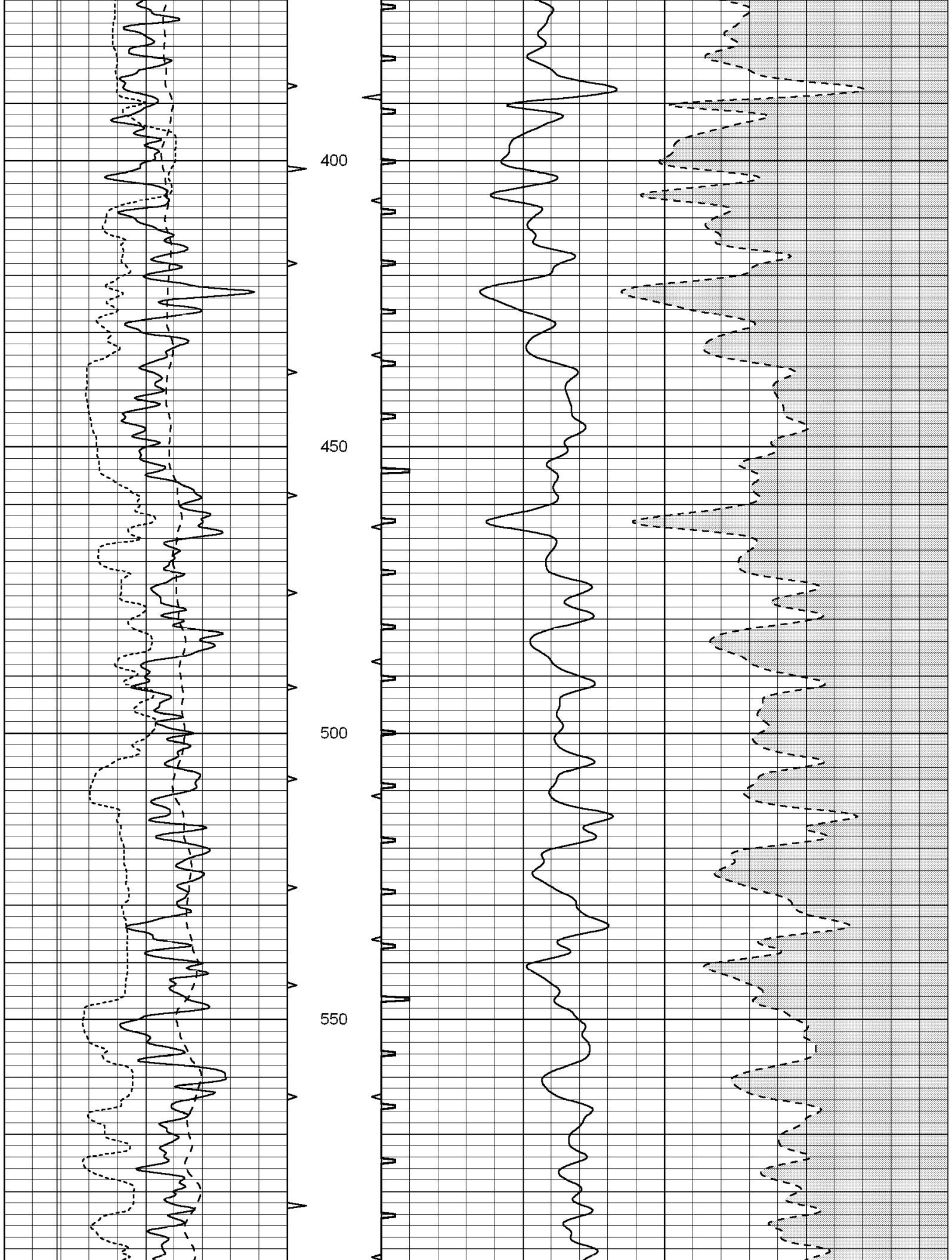
SUPERIOR
Hays,
Kansas

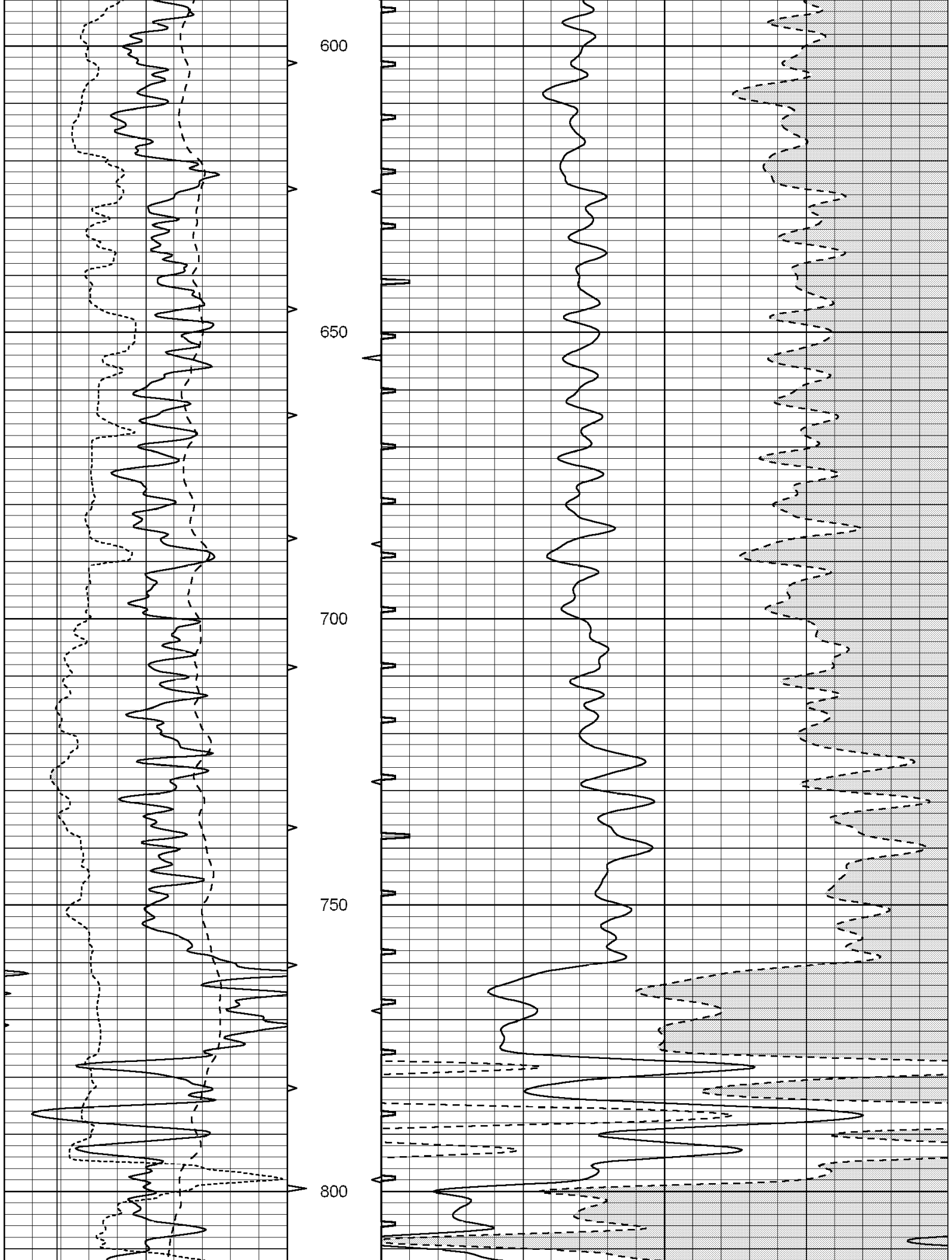
MAIN SECTION

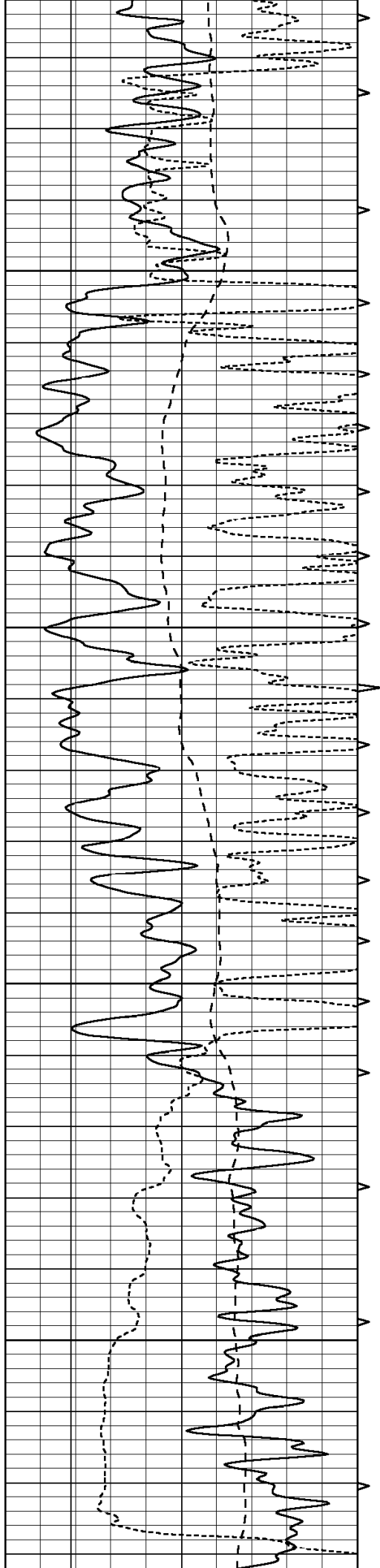
Database File: 003272pe.db
 Dataset Pathname: pass6.4
 Presentation Format: slt
 Dataset Creation: Mon Jun 01 23:17:17 2009
 Charted by: Depth in Feet scaled 1:240

0	GAMMA RAY (GAPI)	150	ABHV	140	DELTA TIME (usec/ft)	40
6	CALIPER (in)	16	10 (ft3) 0	30	SONIC POROSITY (pu)	-10
-100	SP (mV)	100	TBHV	0	ITT (msec)	20
			0 (ft3) 10			







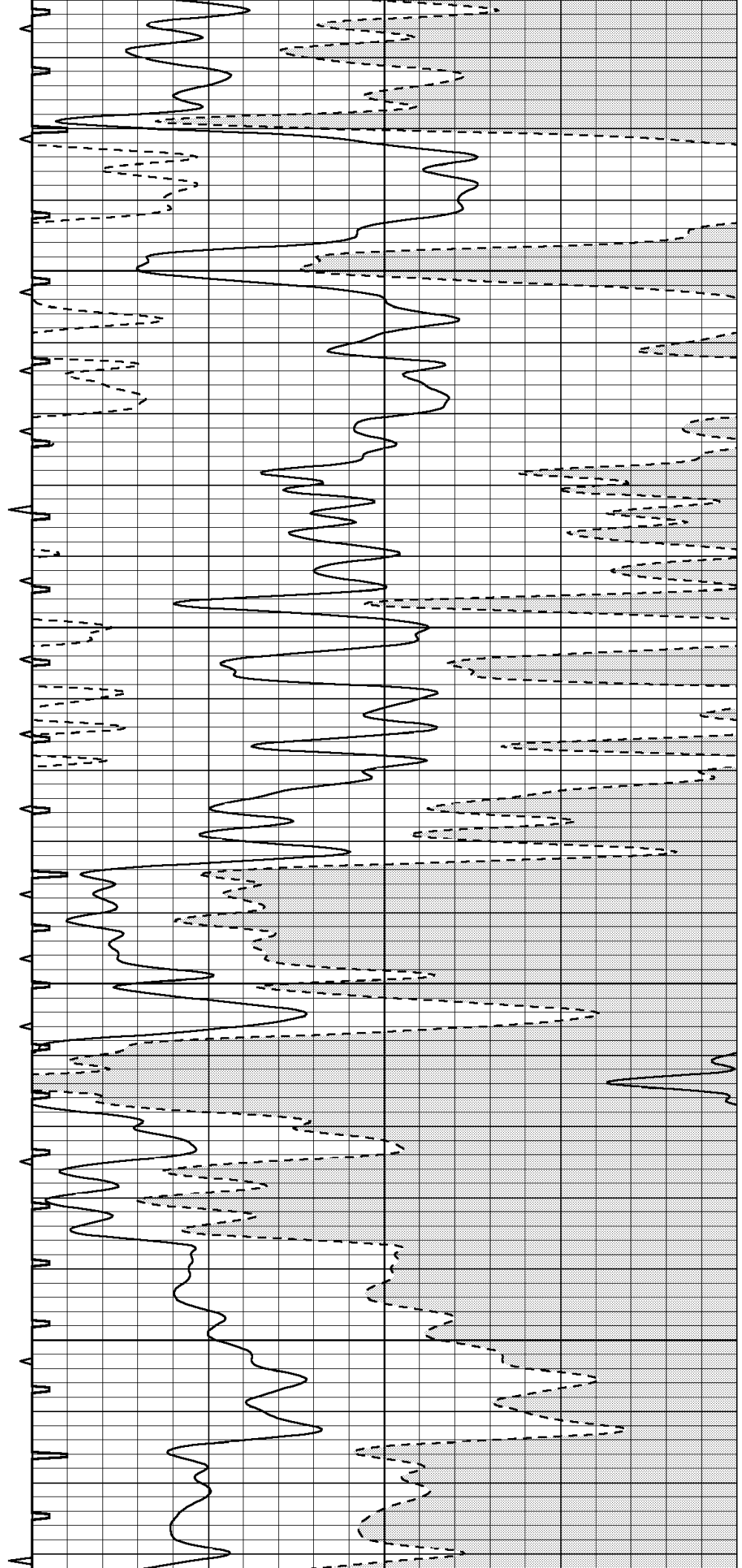


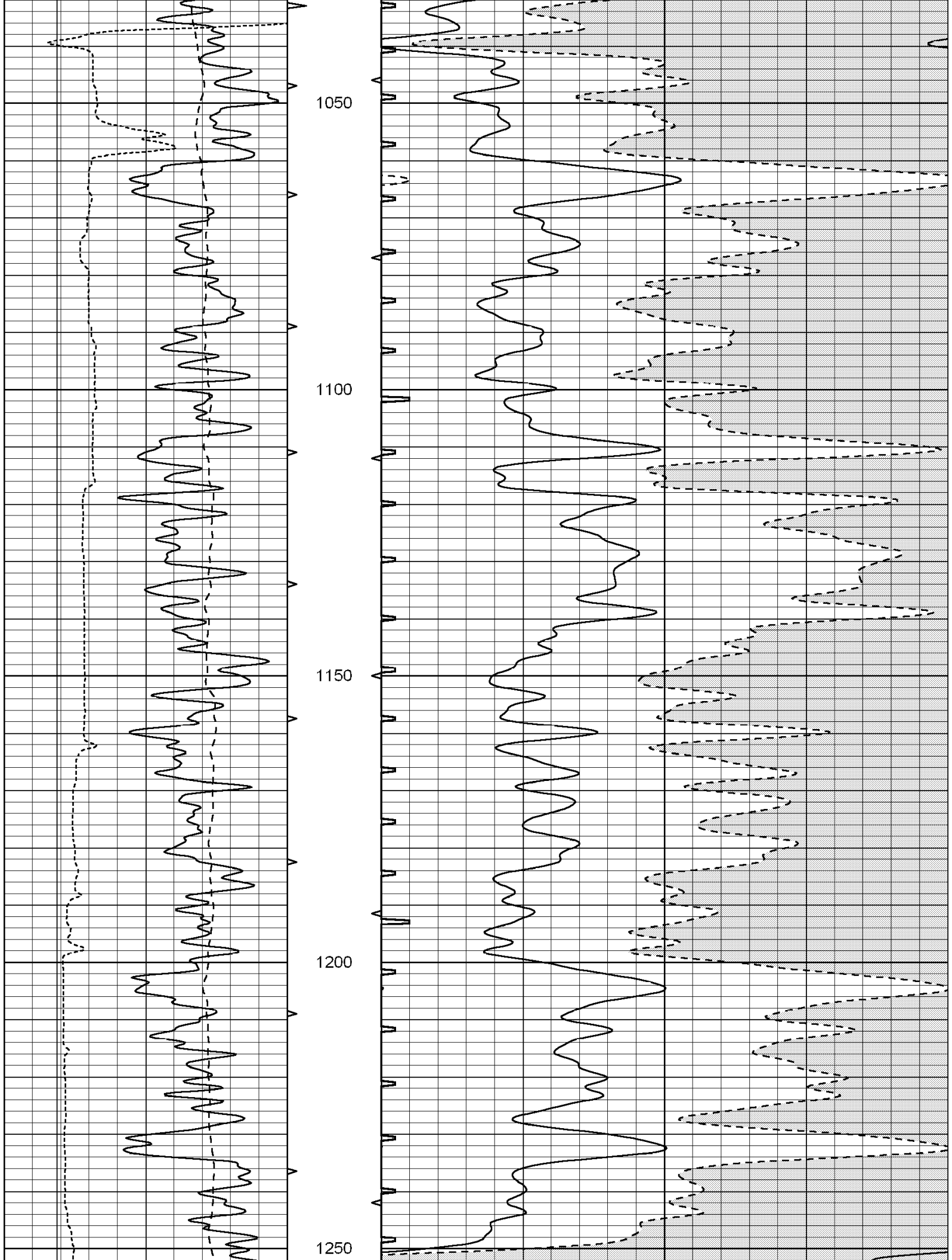
850

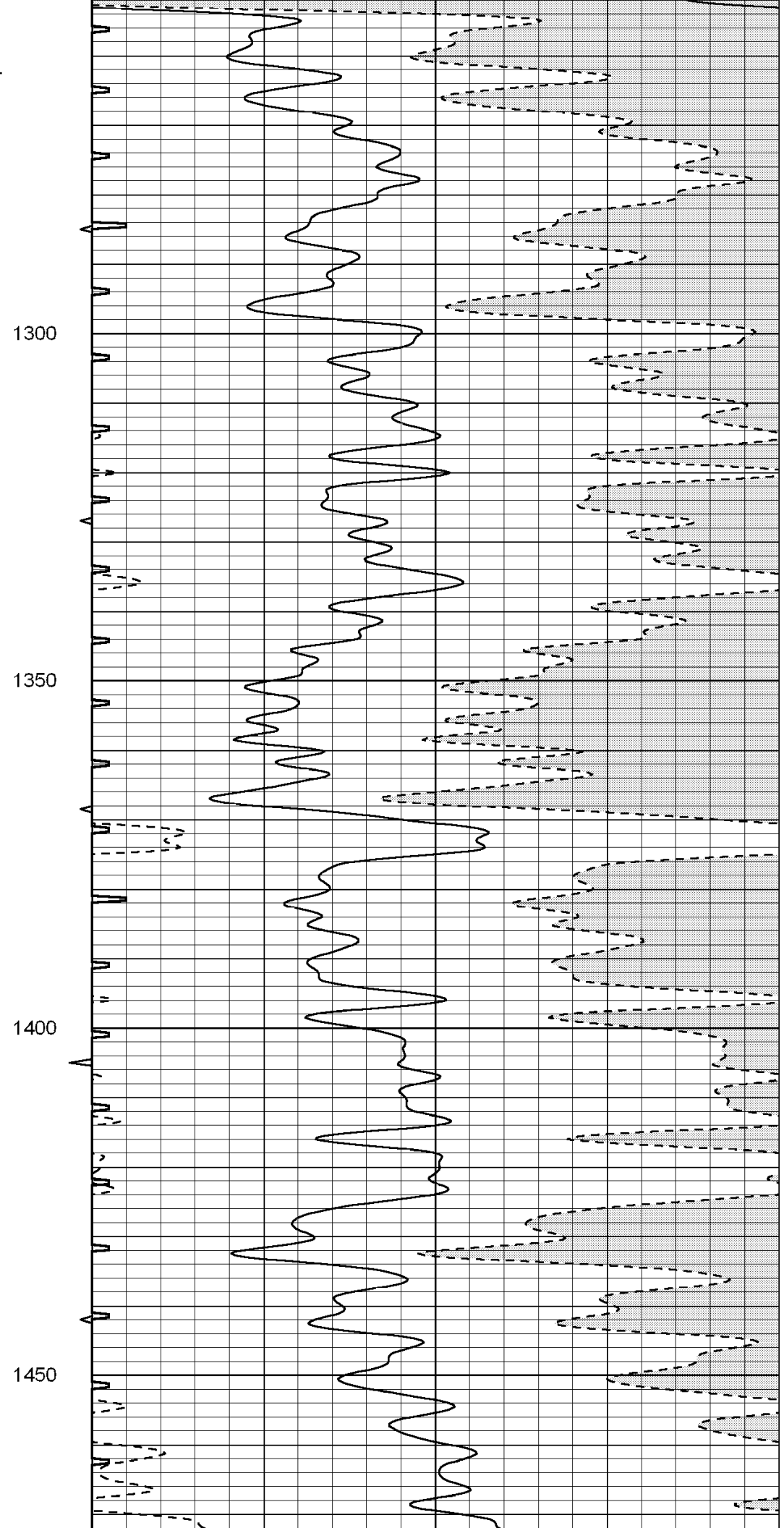
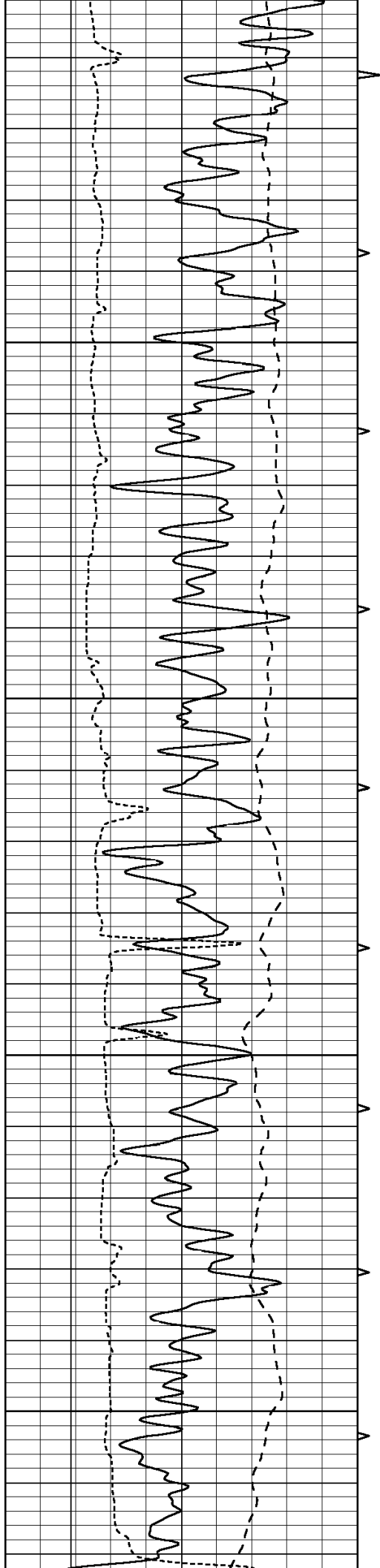
900

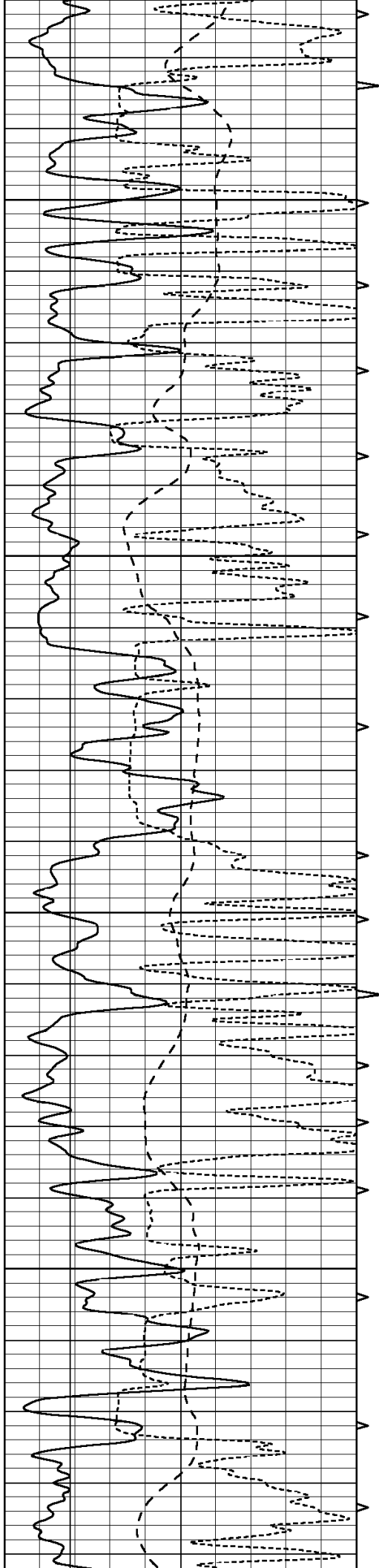
950

1000







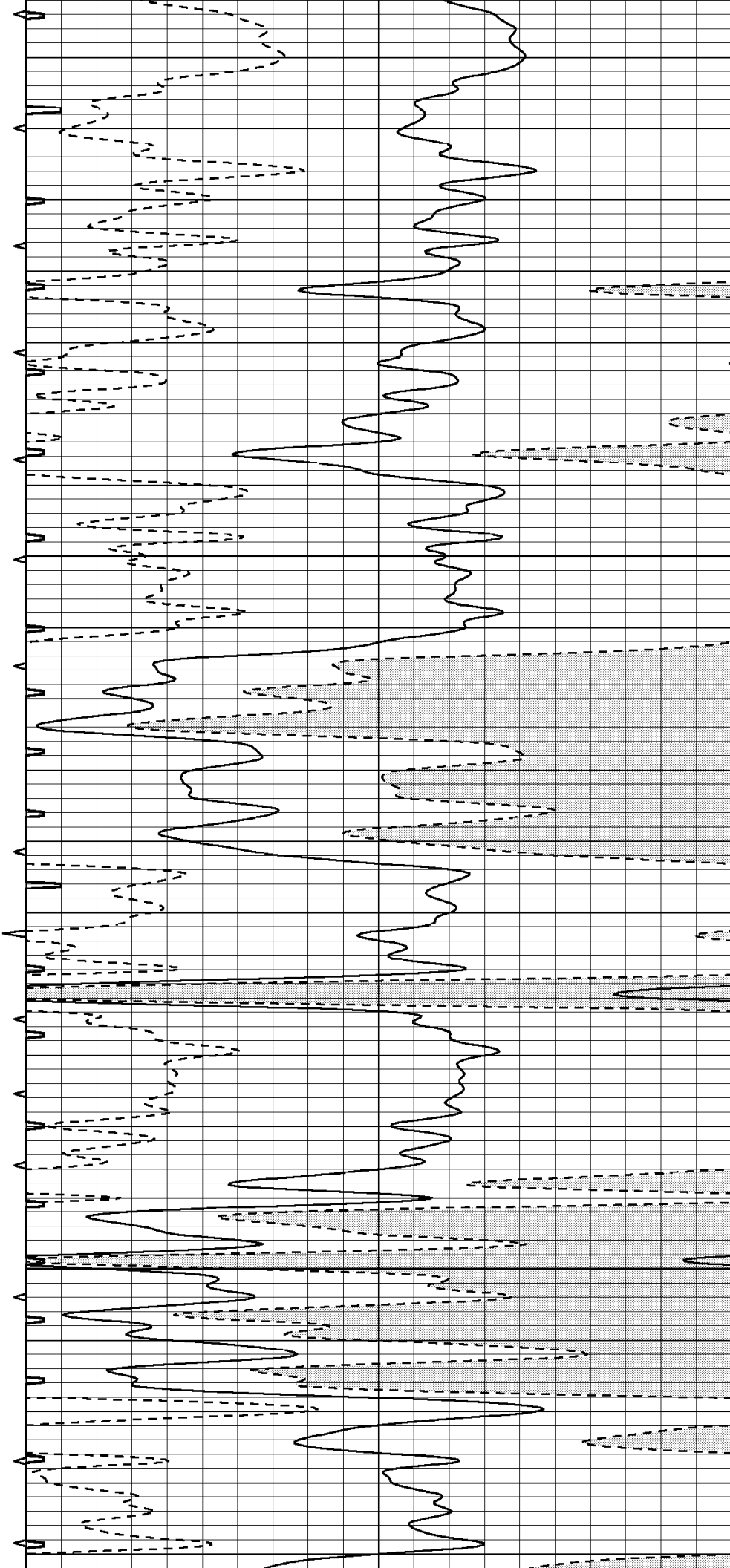


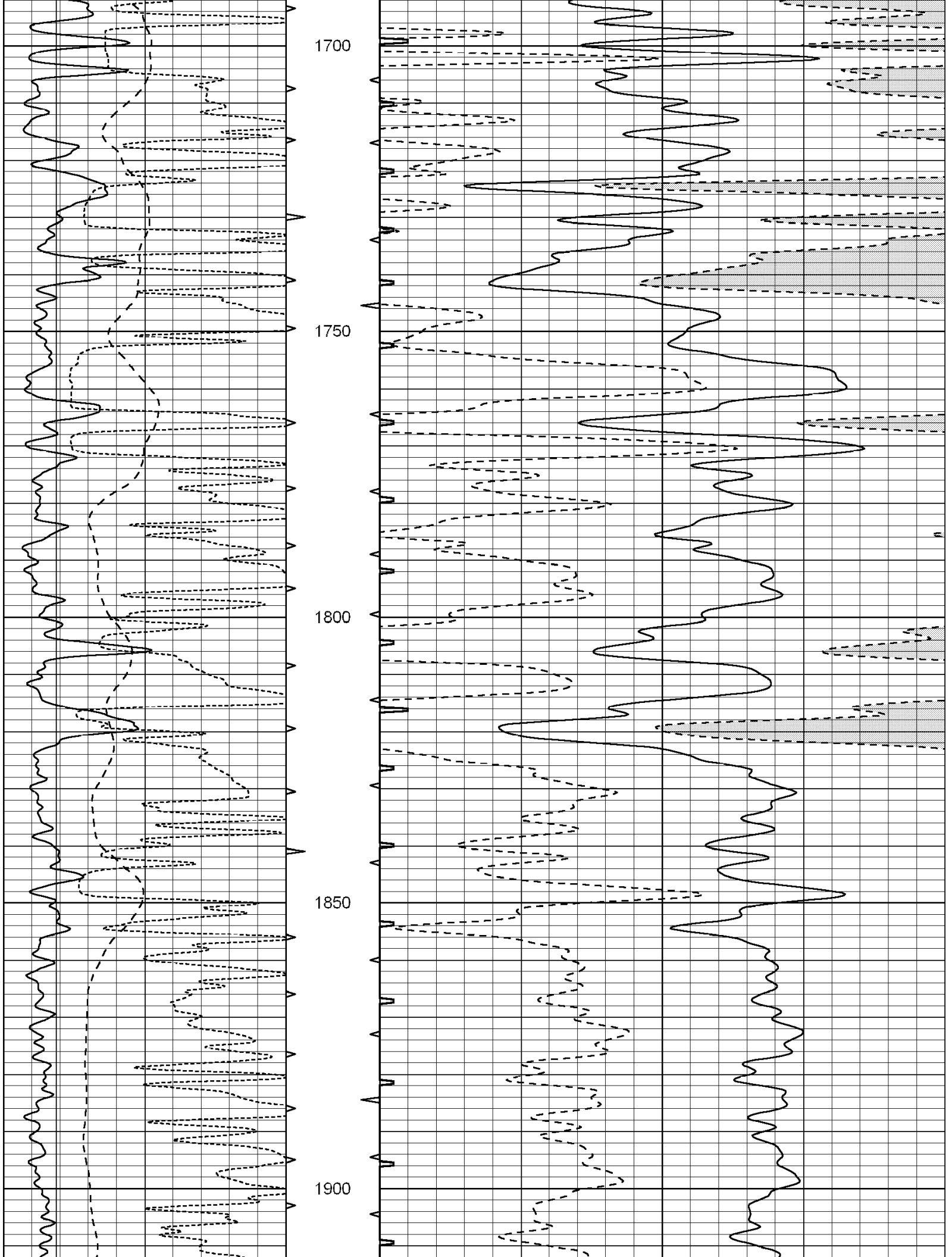
1500

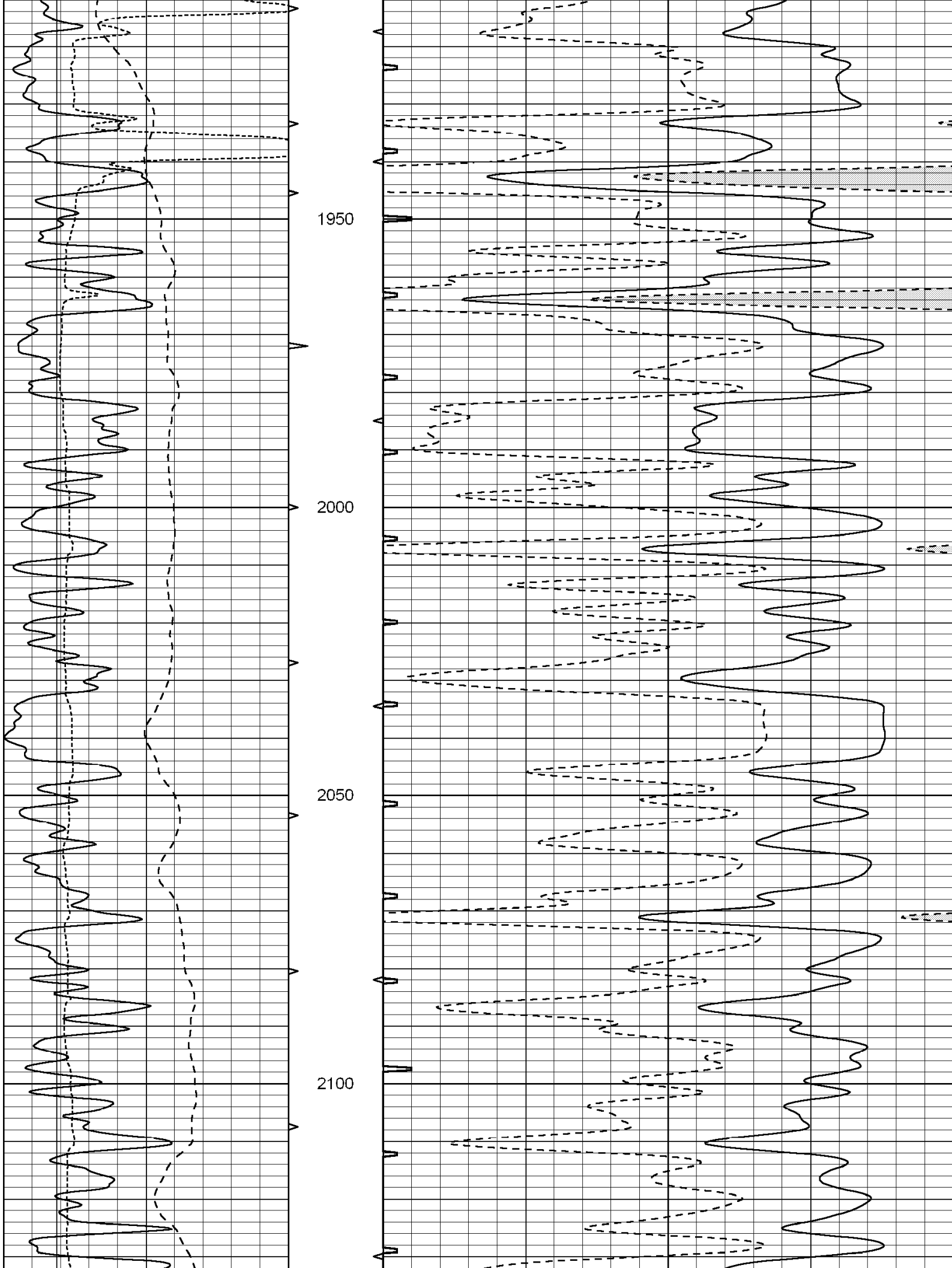
1550

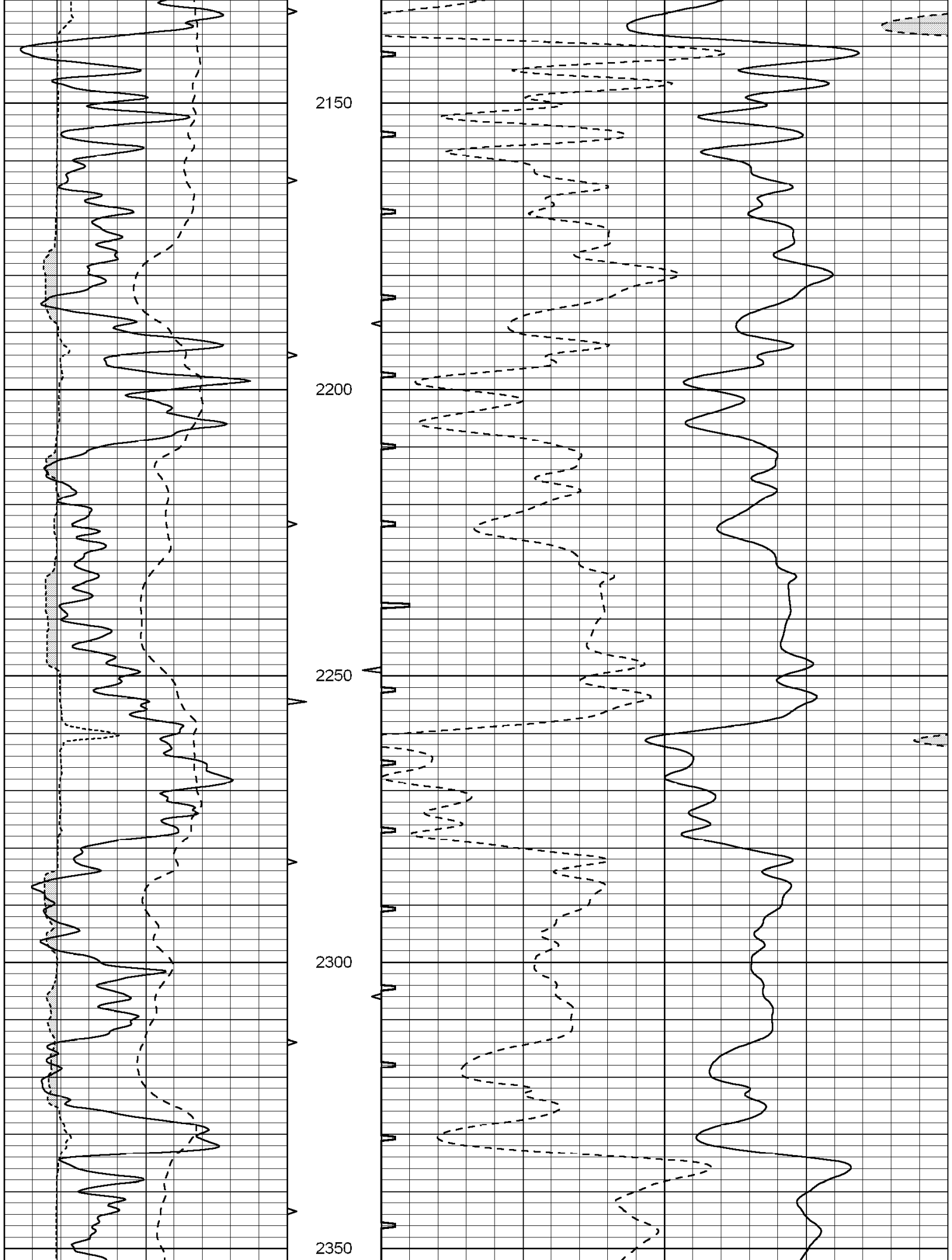
1600

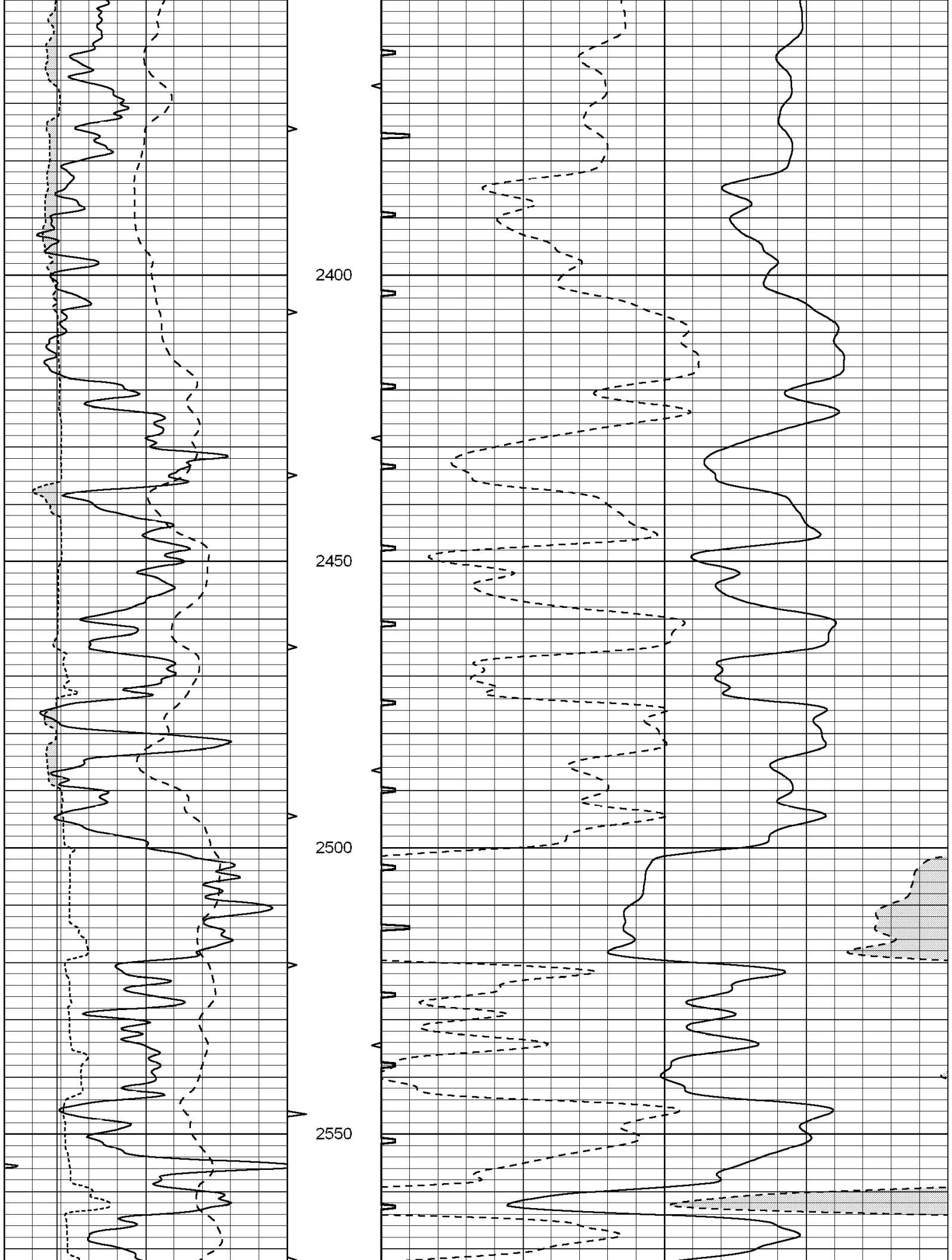
1650

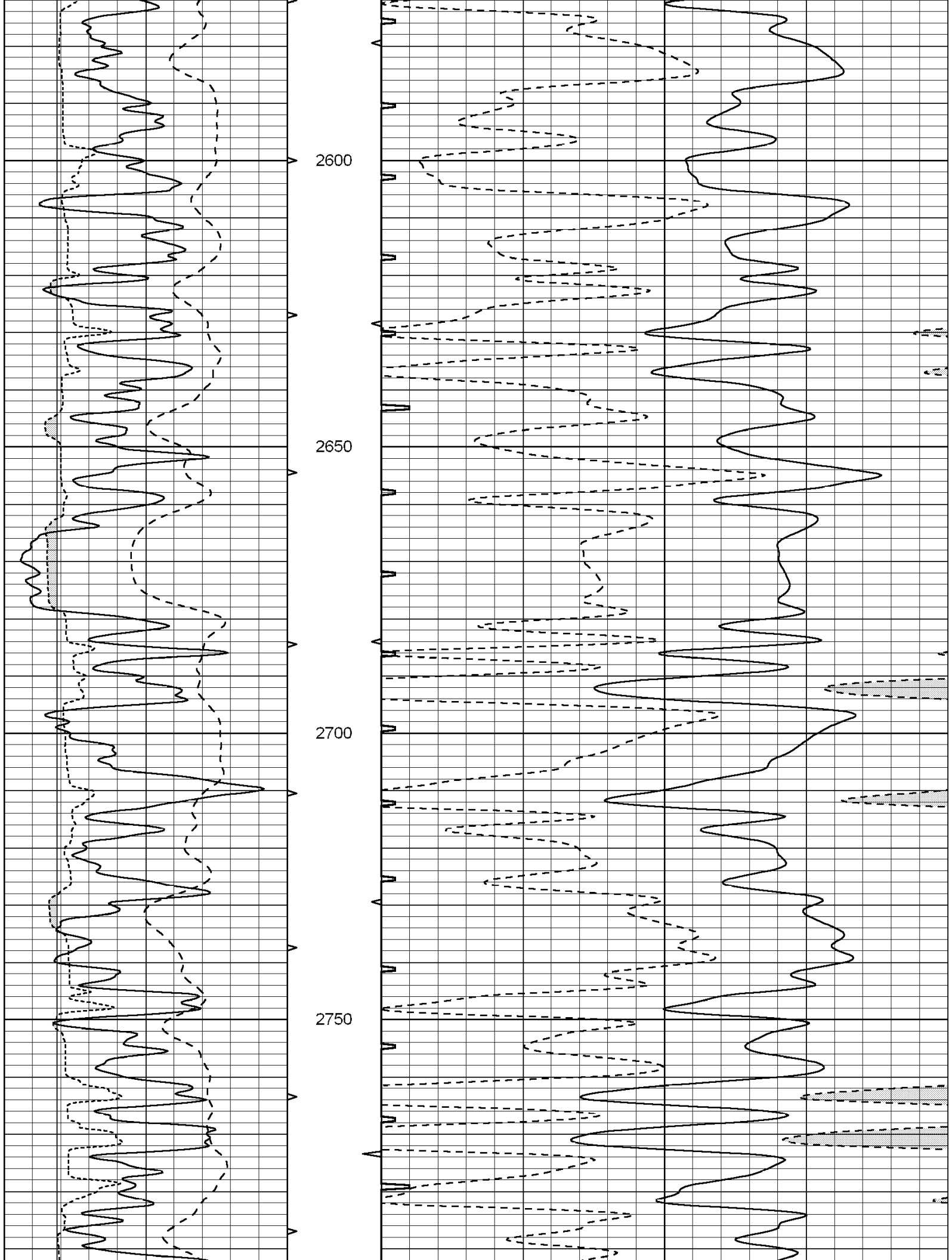


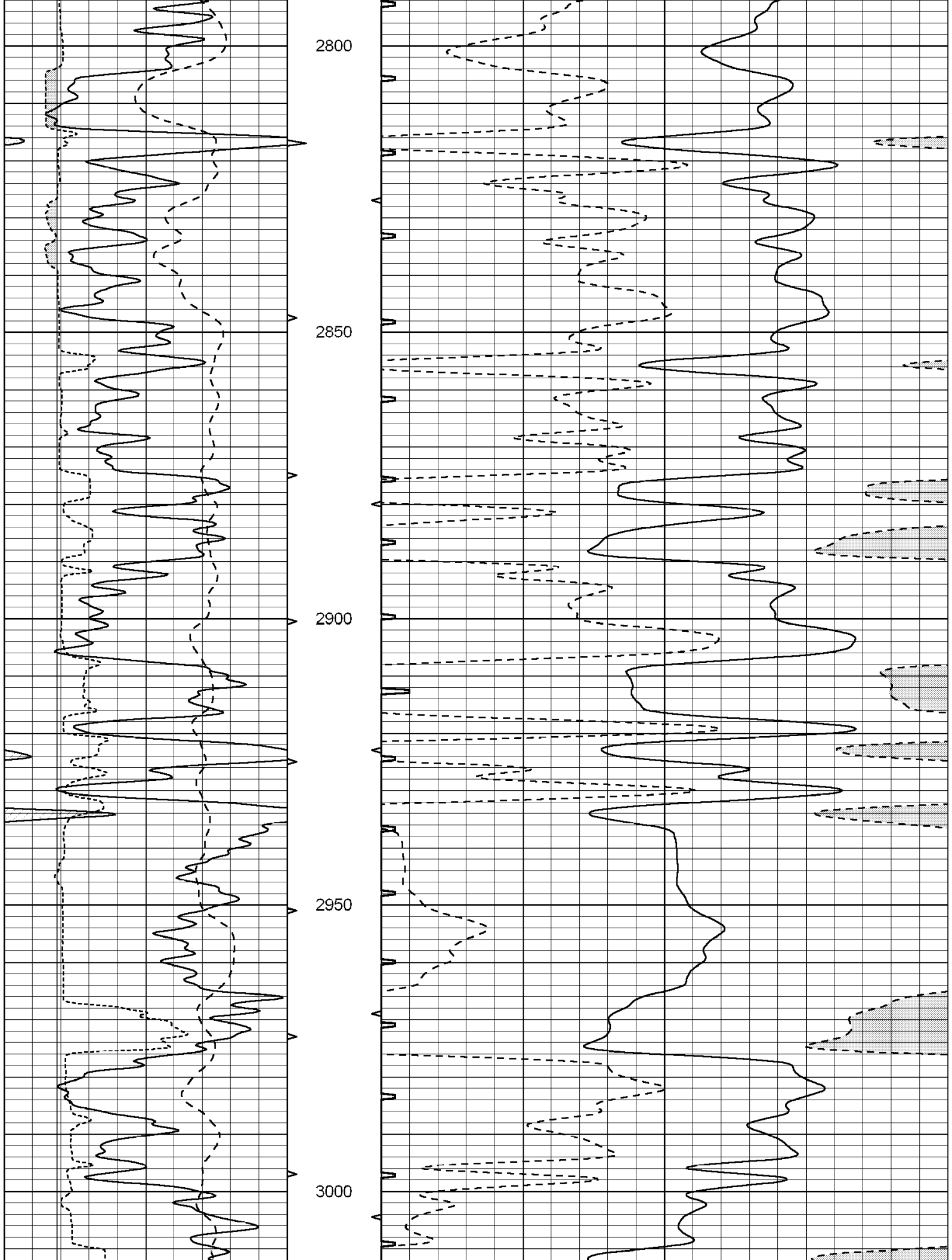


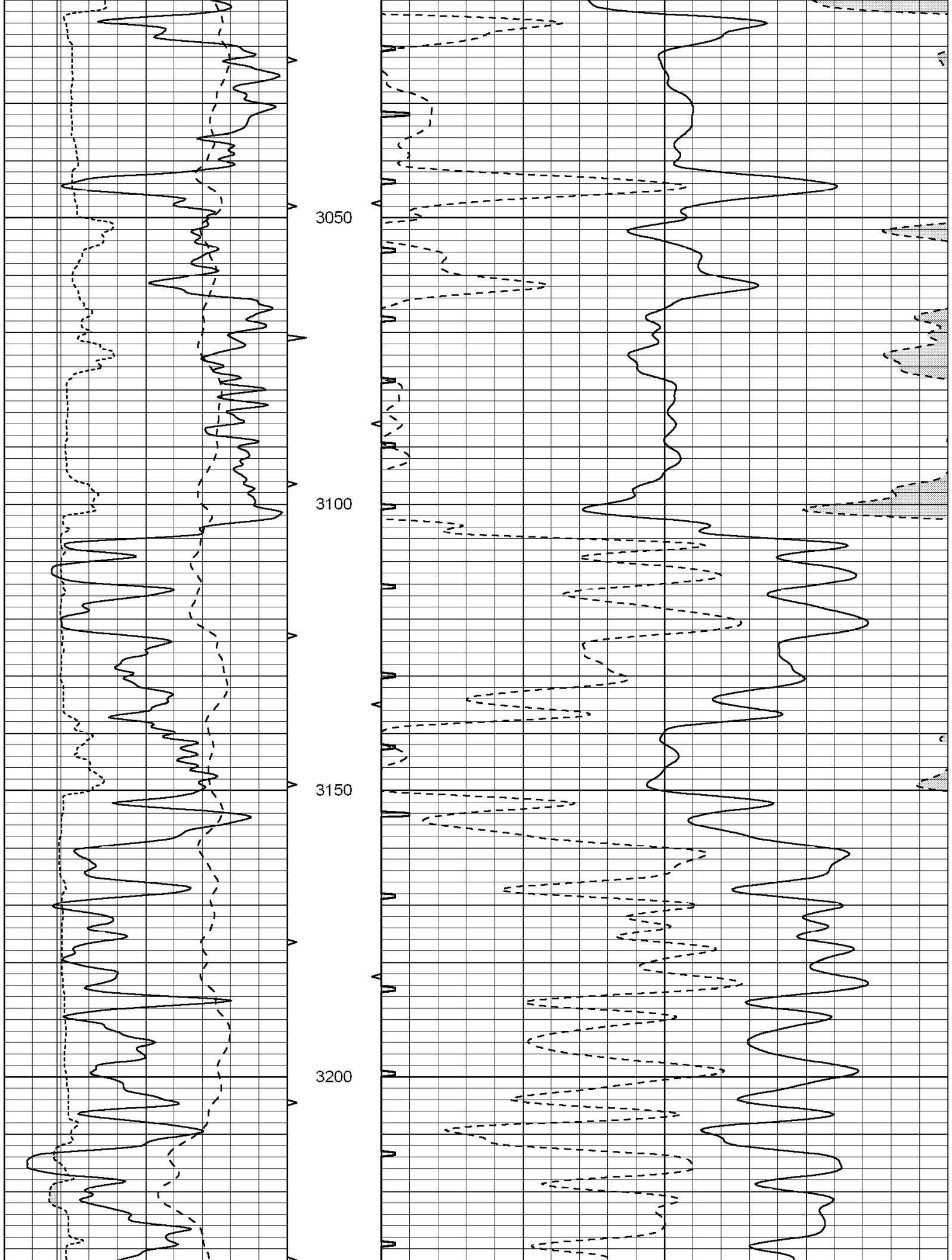


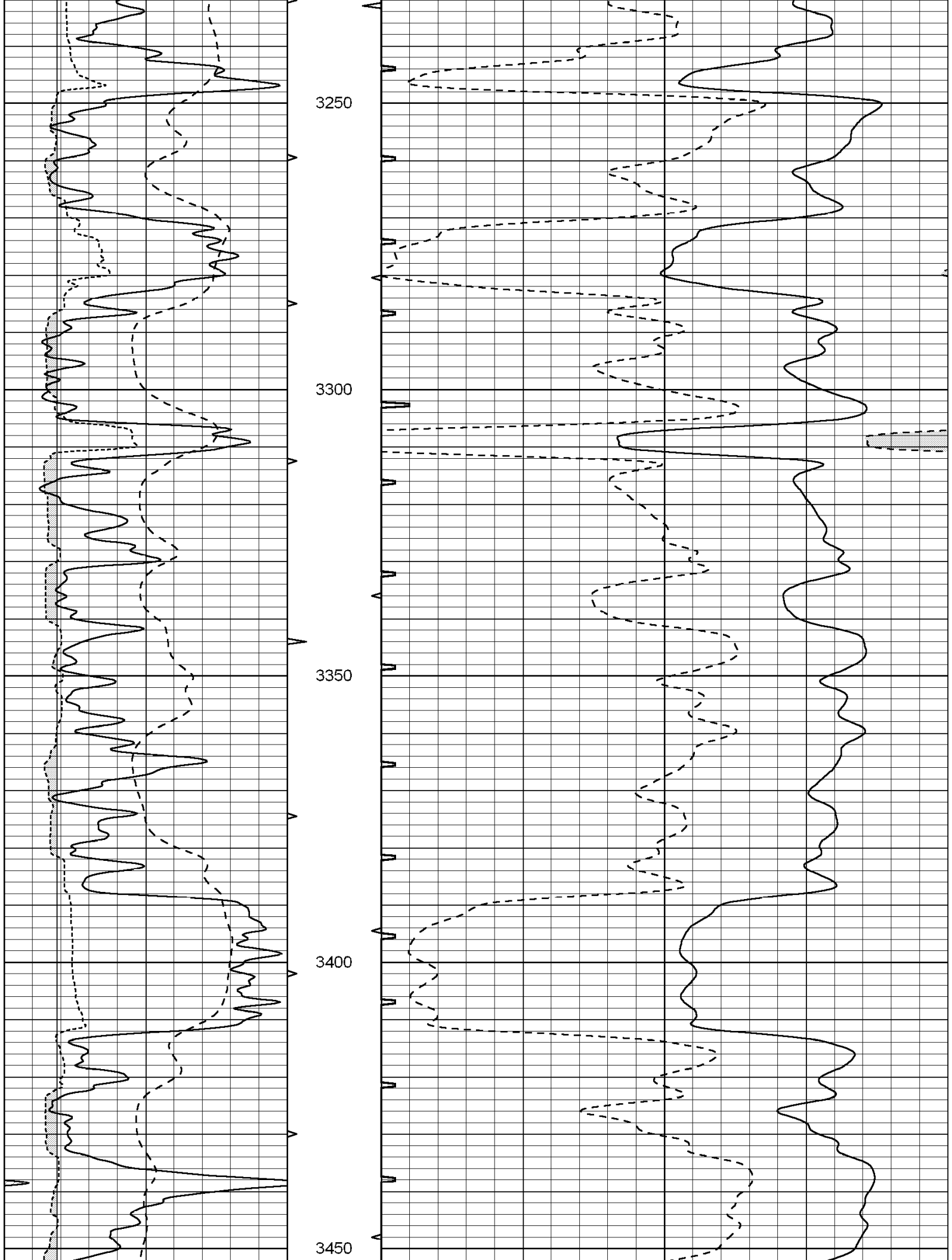


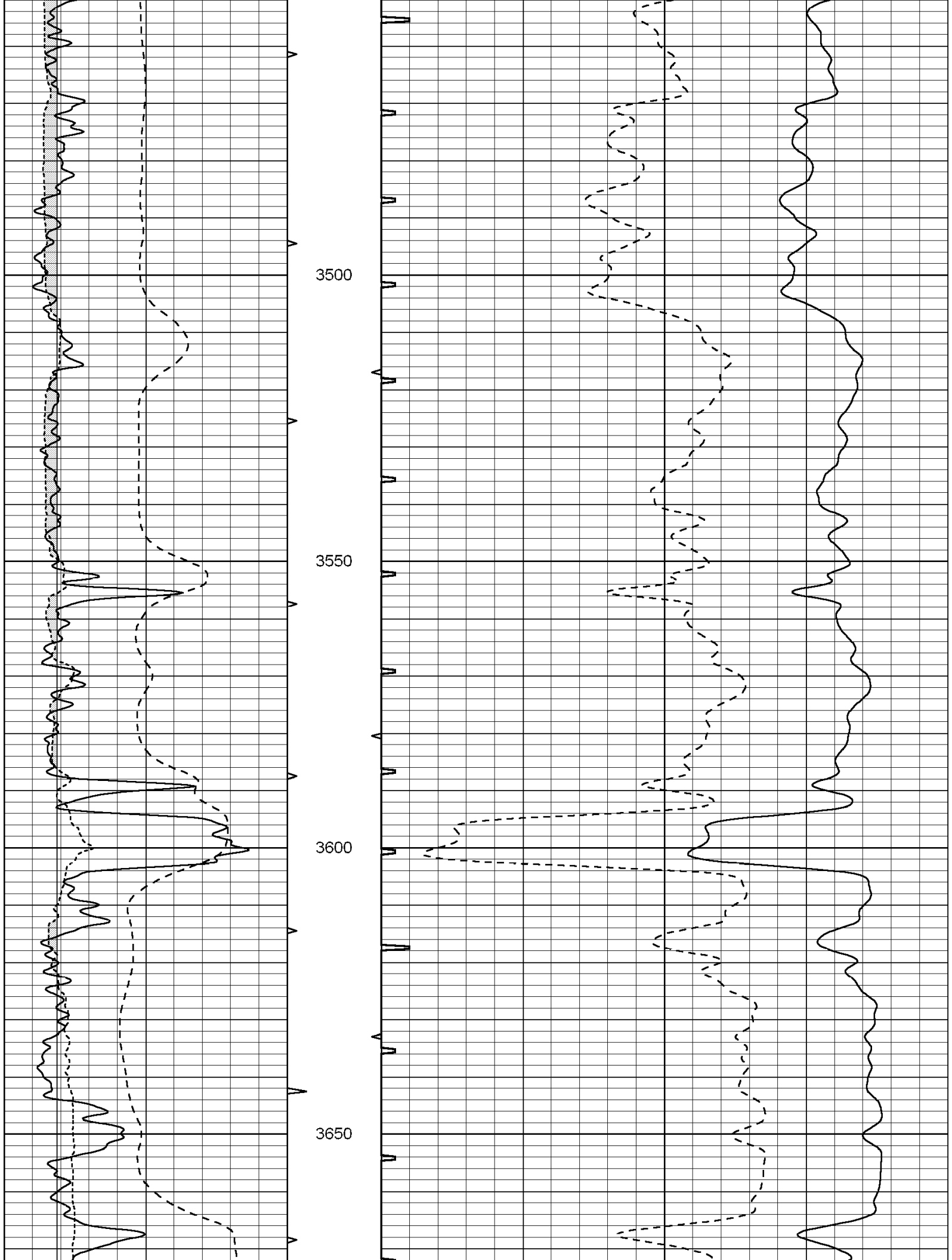


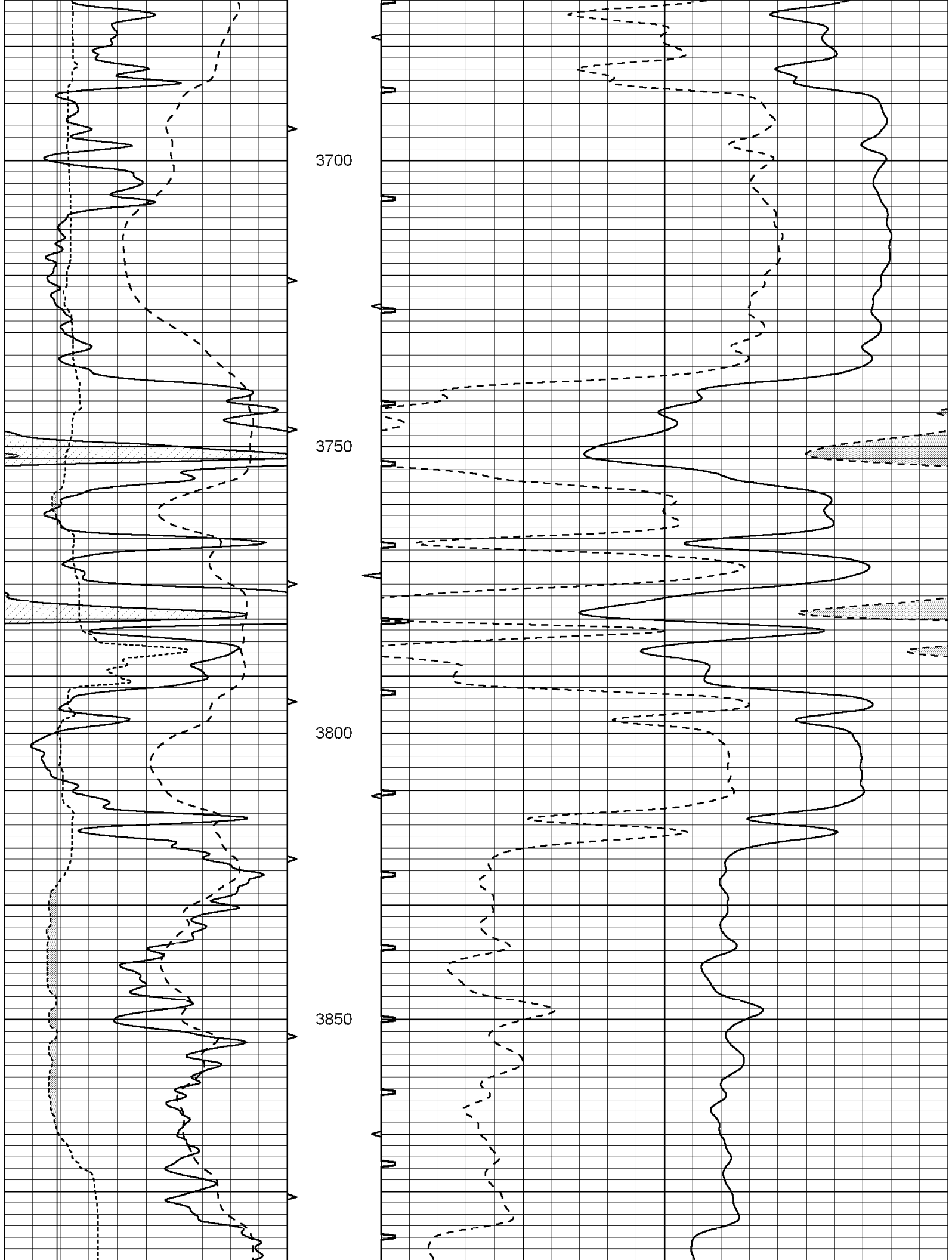


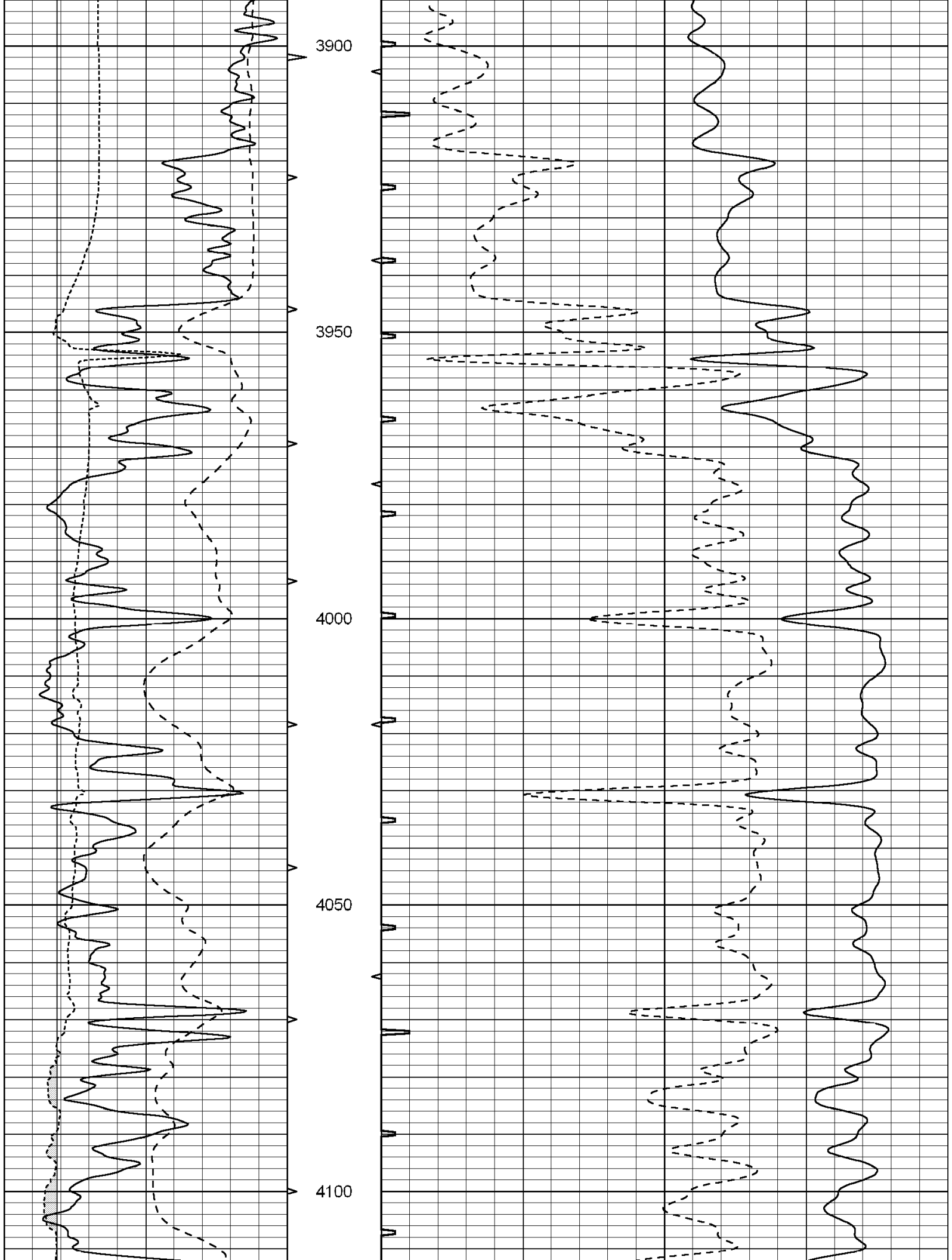


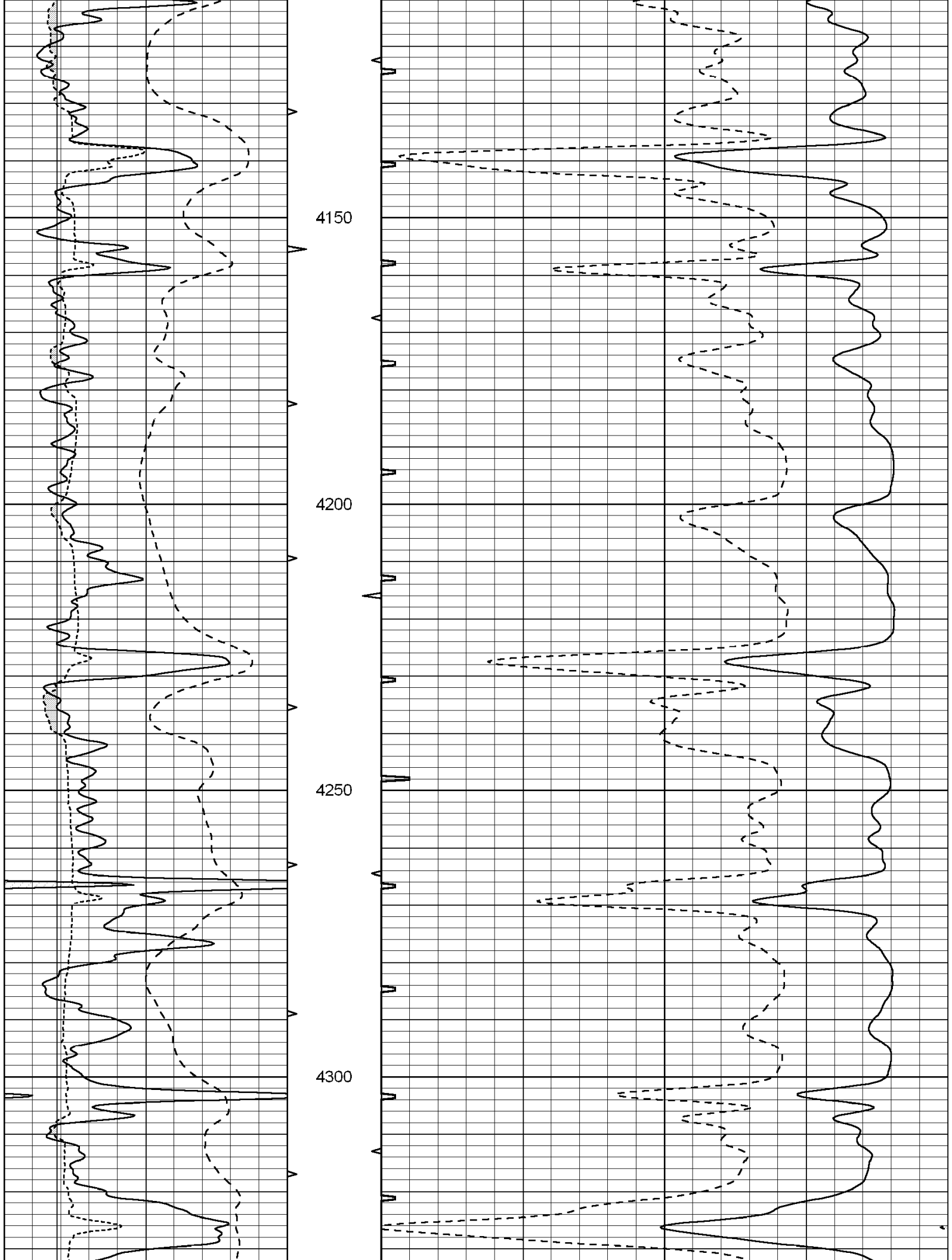


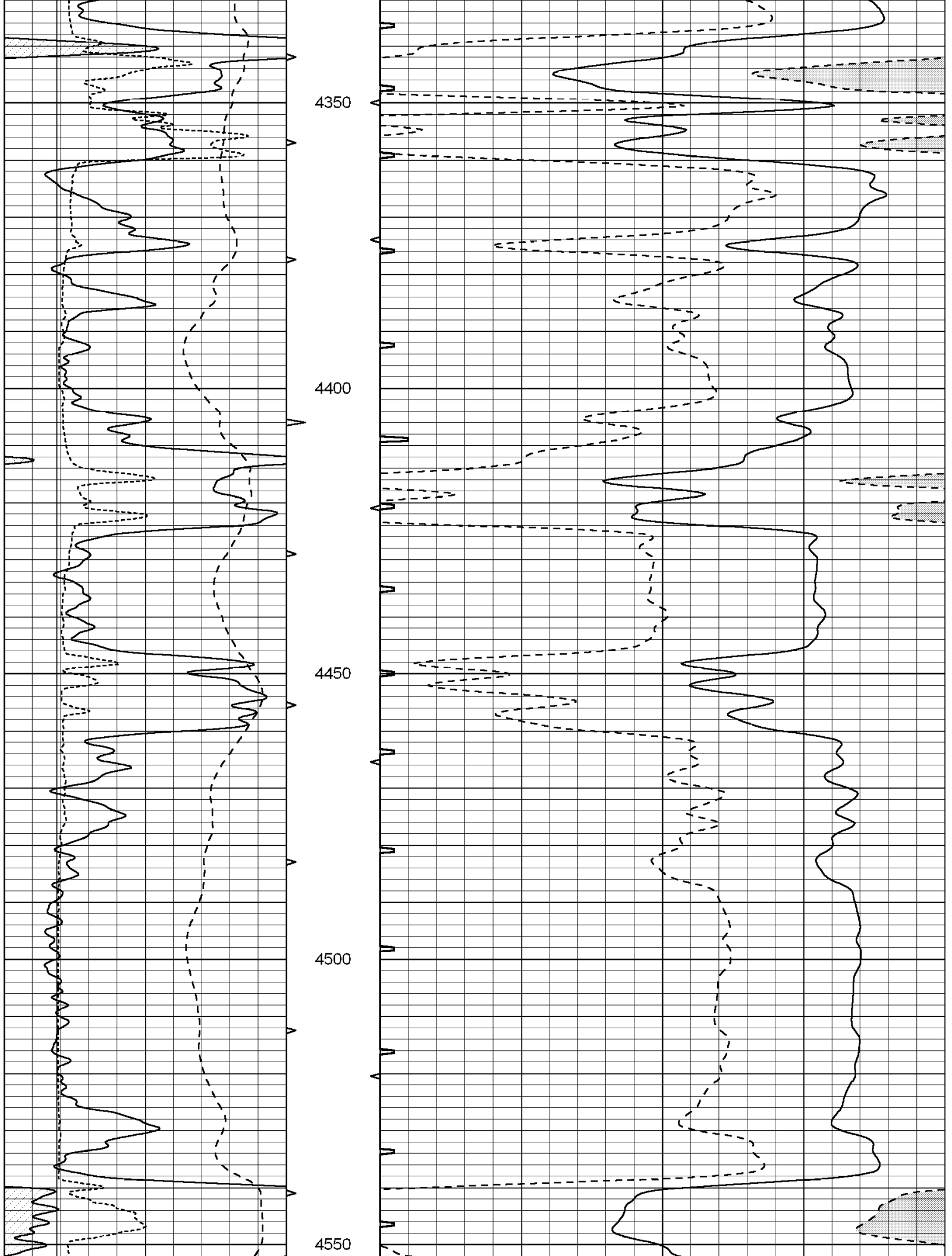


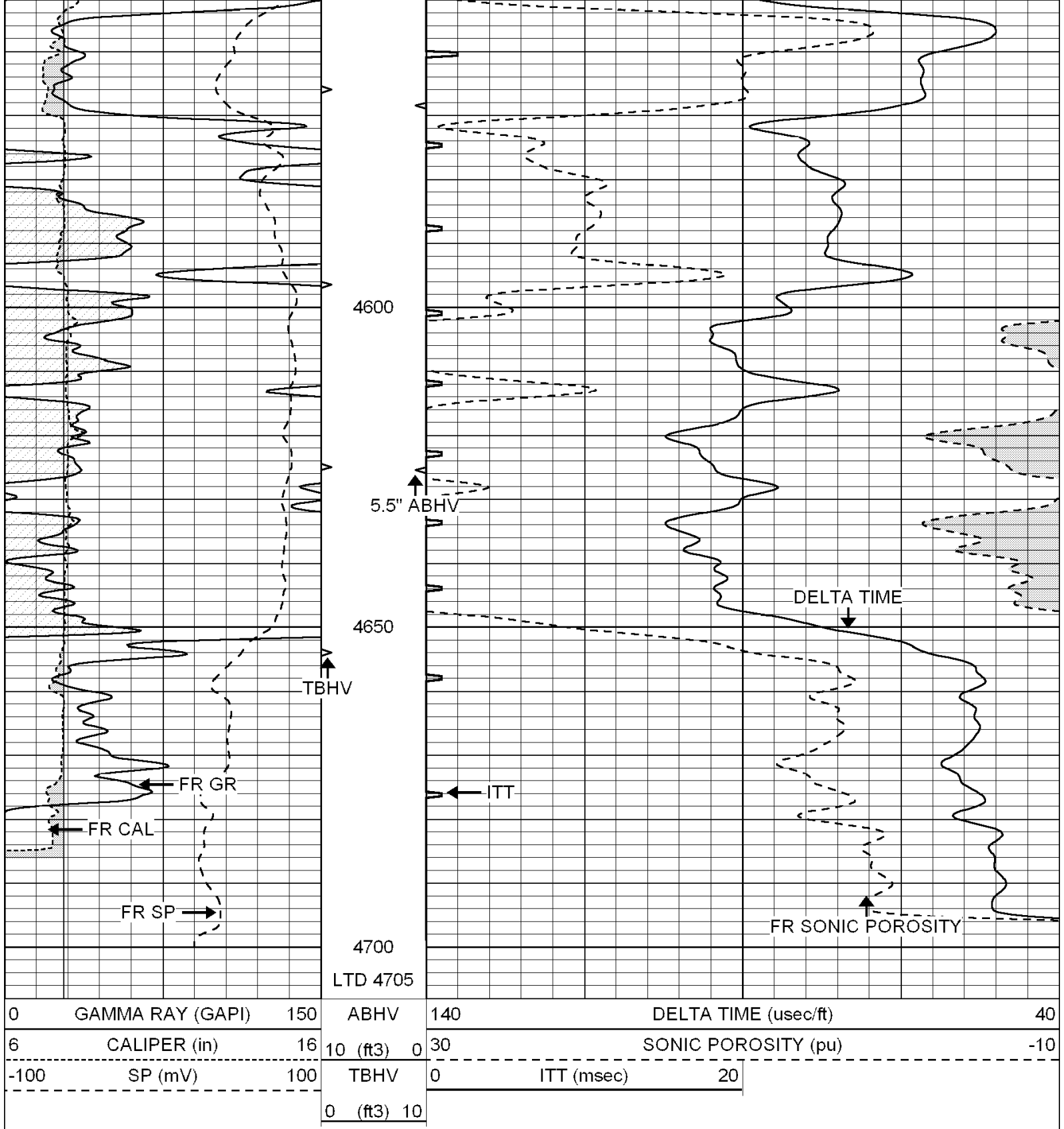












SUPERIOR
Hays,
Kansas

REPEAT SECTION

Database File: 003272pe.db
 Dataset Pathname: pass5.4
 Presentation Format: slt
 Dataset Creation: Mon Jun 01 21:46:24 2009 by Calc Open-Cased 060407
 Charted by: Depth in Feet scaled 1:240

0	GAMMA RAY (GAPI)	150	ABHV	140	DELTA TIME (usec/ft)	40
6	CALIPER (in)	16	10 (ft3) 0	30	SONIC POROSITY (pu)	-10
			TBHV	0	ITT (msec)	20
			0 (ft3) 10			

