



**COMPLETION
& PRODUCTION
SERVICES CO.**

**DUAL RECEIVER
CEMENT BOND LOG**

Company	WEBCO OIL COMPANY, INC.	Country	USA
Well	KAUFMAN #W-2		
Field	KRAFT-PRUSA		
County	RUSSELL		
State	KANSAS		
Company	WEBCO OIL COMPANY, INC.	Country	USA
Well	KAUFMAN #W-2		
Field	KRAFT-PRUSA		
County	RUSSELL		
State	KANSAS		
Location:	API #: 15-167-24027-0000	Other Services	PERF
	1165' FSL & 330' FWL N/2 - NW - SW - SW		
	SEC 36 TWP 15S RGE 12W	Elevation	
Permanent Datum	GROUND LEVEL	Elevation	1855
Log Measured From	KELLY BUSHING	10' A.G.L.	K.B. 1865
Drilling Measured From	KELLY BUSHING		D.F. 1863
			G.L. 1855

Date	2/10/2015
Run Number	ONE
Depth Driller	3370
Depth Logger	3324
Bottom Logged Interval	3323
Top Log Interval	2250
Open Hole Size	7 7/8
Type Fluid	WATER
Density / Viscosity	
Max. Recorded Temp.	
Estimated Cement Top	2366
Time Well Ready	
Time Logger on Bottom	
Equipment Number	747
Location	HAYS,KANSAS
Recorded By	R.SMITH
Witnessed By	ALLEN BANGERT

Borehole Record				Tubing Record			
Run Number	Bit	From	To	Size	Weight	From	To

Casing Record	Size	Wgt/Ft	Top	Bottom
Surface String	8 5/8		0	480
Prot. String				
Production String	5 1/2		0	3363
Liner				

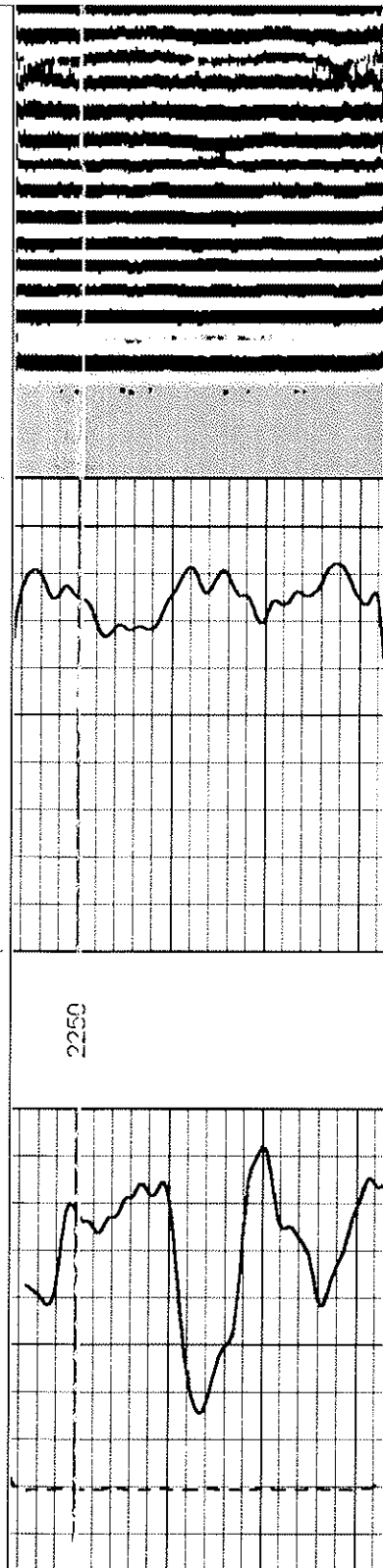
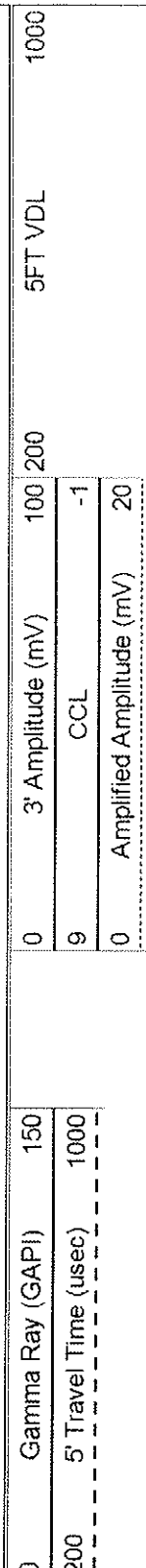
<<< Fold Here >>>

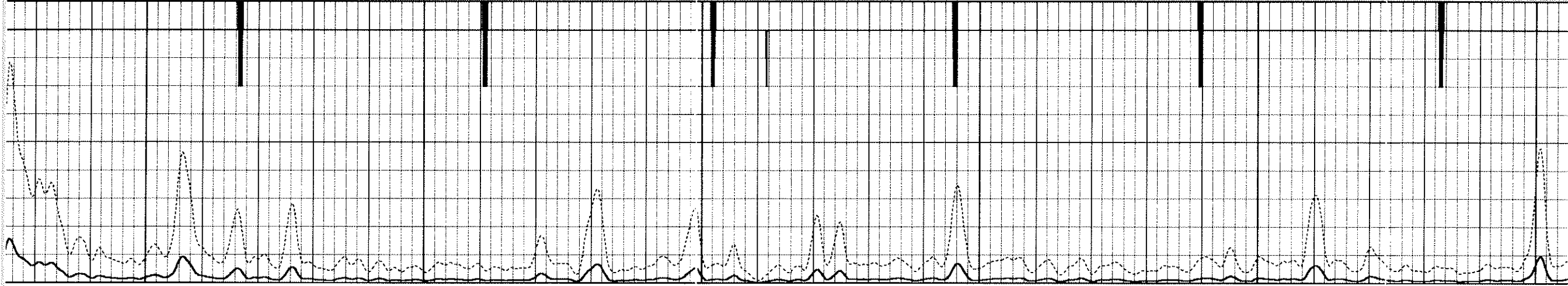
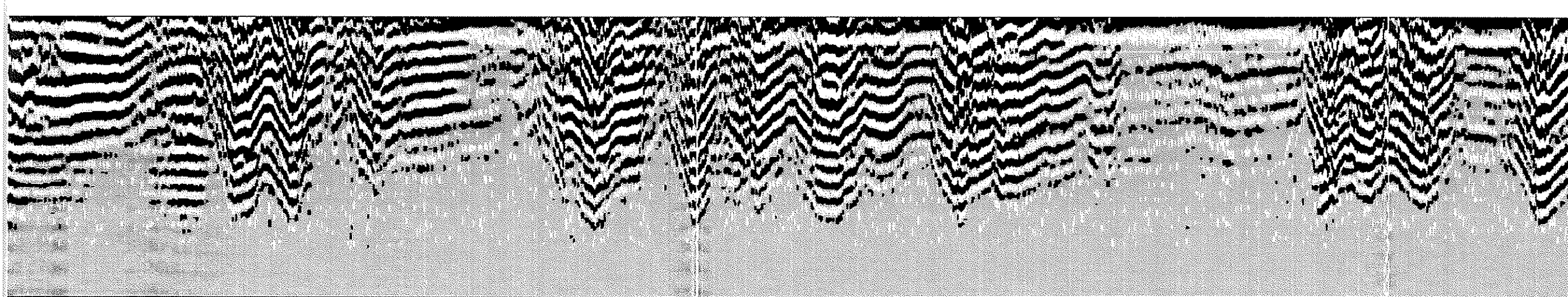
All interpretations are opinions based on inferences from electrical or other measurements and we cannot and do not guarantee the accuracy or correctness of any interpretation, and we shall not, except in the case of gross or willful negligence on our part, be liable or responsible for any loss, costs, damages, or expenses incurred or sustained by anyone resulting from any interpretation made by any of our officers, agents or employees. These interpretations are also subject to our general terms and conditions set out in our current Price Schedule.

Comments

THANK YOU FOR USING NABORS COMPLETION & PRODUCTION SERVICES COMPANY
HAYS, KANSAS (785) 628-6395
DIRECTIONS - DUBUQUE, KS - 1/2 W. TO RD 198TH - 1/2 N. - E. INTO

Database File: 26552grb webco oil kaufman #w-2.db
Dataset Pathname: pass2.2
Presentation Format: dbbl02
Dataset Creation: Tue Feb 10 12:17:18 2015 by Calc 7.0 B1
Charted by: Depth in Feet scaled 1:240





2400

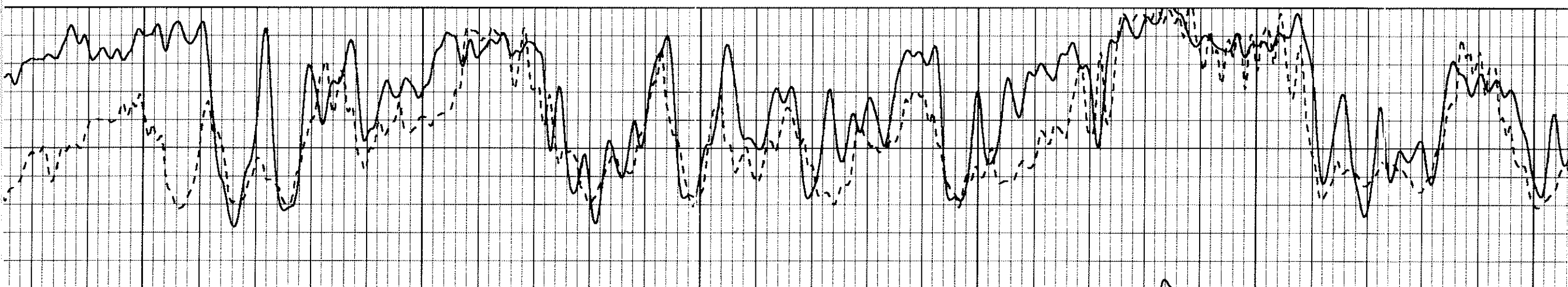
2450

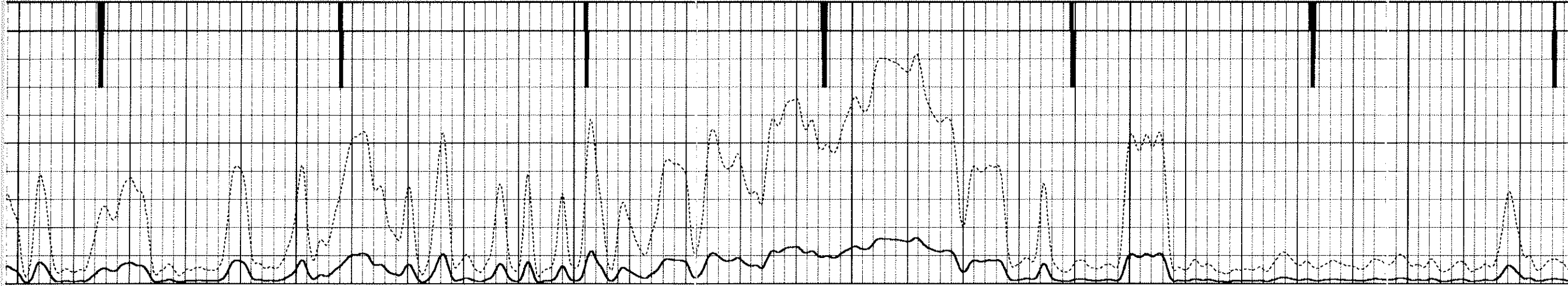
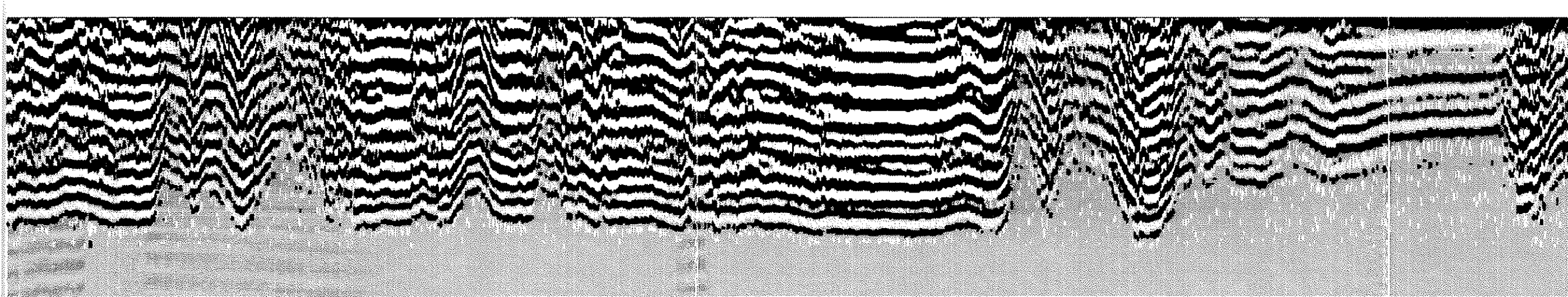
2500

2550

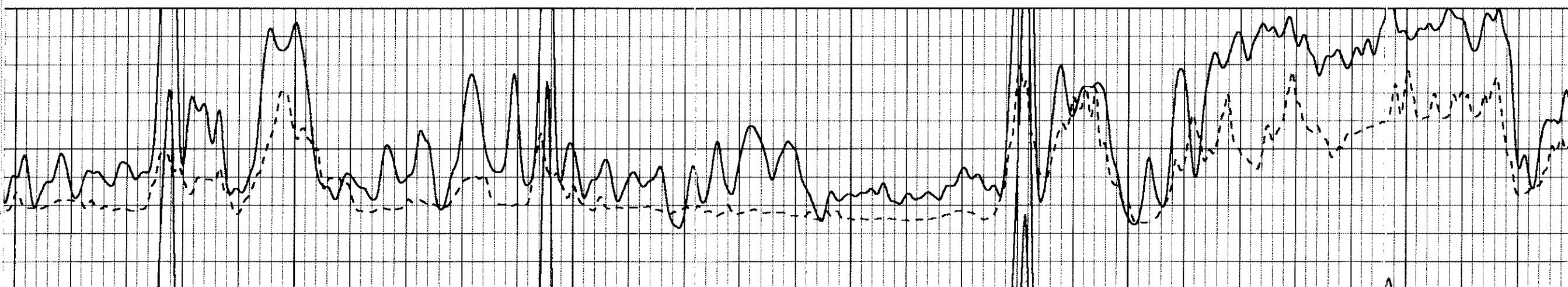
2600

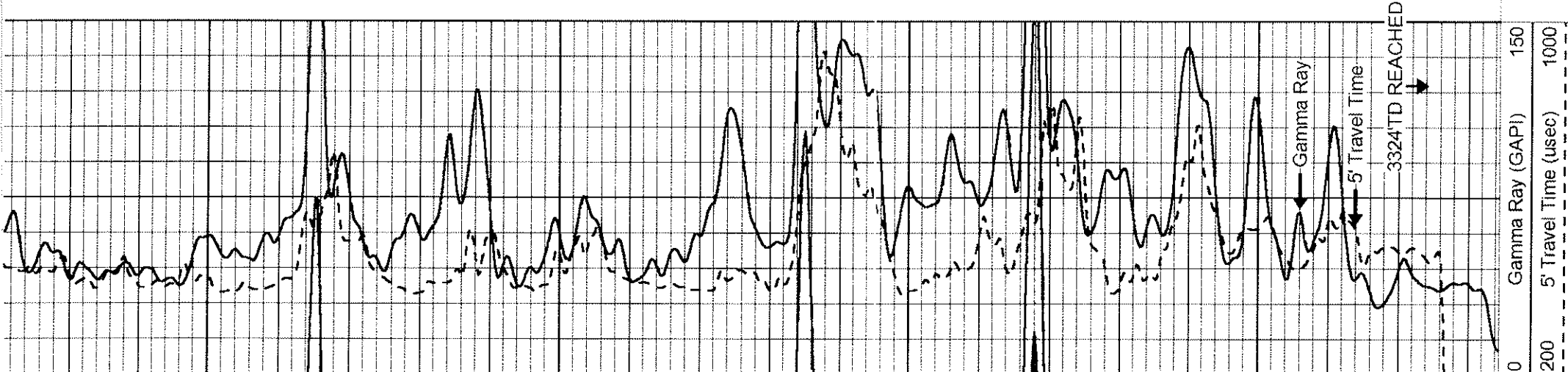
2650





2750 2800 2850 2900 2950 3000

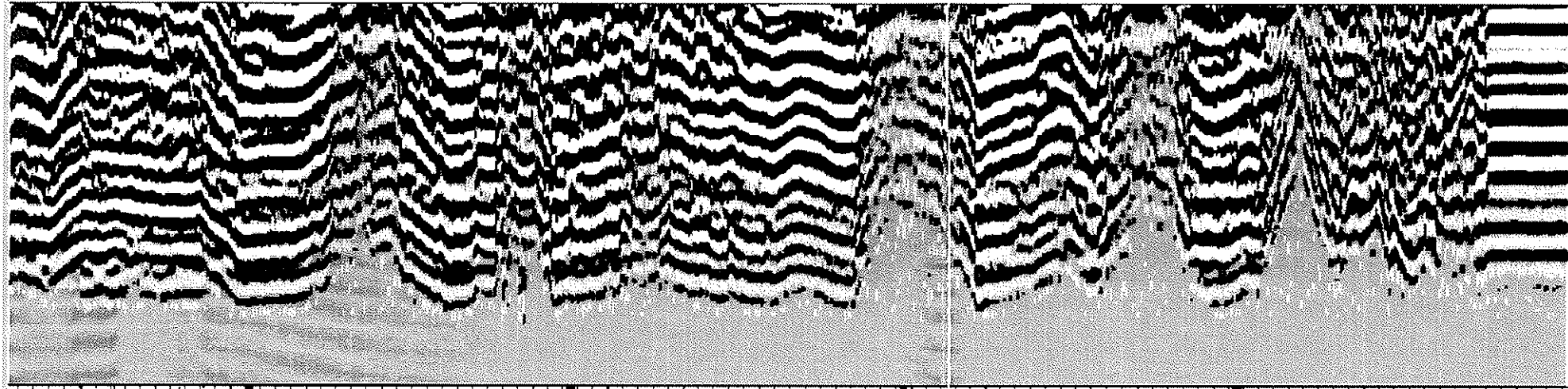




0 200 400 600 800 1000
 Gamma Ray (GAPI) 150
 5' Travel Time (usec) 1000



0 100 200 300 400 500 600 700 800 900 1000
 3' Amplitude (mV) 100 200
 5' Amplitude (mV) 200
 CCL -1
 Amplified Amplitude (mV) 20



0 100 200 300 400 500 600 700 800 900 1000
 5FT VDL 1000

3150

3200

3250

3300



**COMPLETION
 & PRODUCTION
 SERVICES CO.**

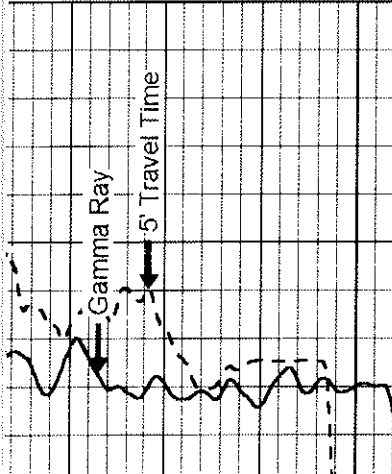
SHOE JOINT

Database File: 26552grb webco oil kaufman #w-2.db
 Dataset Pathname: pass8
 Presentation Format: dcbj02
 Dataset Creation: Thu Feb 12 08:42:40 2015 by Log 7.0 B1
 Charted by: Depth in Feet scaled 1:240

0 200 400 600 800 1000
 Gamma Ray (GAPI) 150
 5' Travel Time (usec) 1000

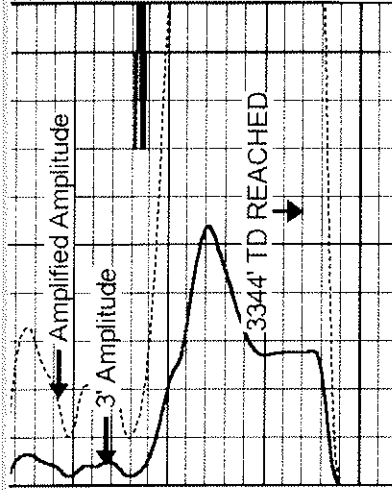
0 100 200 300 400 500 600 700 800 900 1000
 3' Amplitude (mV) 100 200
 5' Amplitude (mV) 200
 CCL -1
 Amplified Amplitude (mV) 20

0 100 200 300 400 500 600 700 800 900 1000
 5FT VDL 1000



0 2000 Gamma Ray (GAPI) 150
 5' Travel Time (usec) 1000

3350



0 9 3' Amplitude (mV) 100
 CCL -1
 0 Amplified Amplitude (mV) 20

200 5FT VDL

1000

