



**Sonic Cement
Bond Log**

Pioneer Energy Services

API No.

15-109-21186-00-00

Company **Morris Oil Operations**

Well **Marguerite No. 4**

Field

County **Russell**

State **Kansas**

Location

950' FSL & 330' FWL

Other Services
GRN

Sec: **6** Twp: **15 S** Rge: **13 W**

Elevation

Permanent Datum **Ground Level** Elevation **1852**
 Log Measured From **Kelly Bushing** **9** Ft. Above Perm. Datum
 Drilling Measured From **Kelly Bushing**

K.B. **1861**
 D.F. **@**
 G.L. **1852**

Run Number	One	
Date Survey	09/05/2013	
Date Cementing	08/20/2013	
Type Cementing Operation	Primary	
Depth Driller	3350	
Depth Logger	3333	
Logged Interval	3327 to 1850	to
Casing Driller	5.5 @ 3349	@
Float Collar -- D.V. Tool	////	////
Squeeze Depth	////	
Amount & Type Cement	////	
Amount & Type Admix	////	
Type Fluid In Hole	Water	
Fluid Level	Full	
Salinity PPM CL	////	
Weight lb/gal -- Vis.	////	////
Approx. Logged Cement Top	2070	
Calculated Cement Top	////	
Max. Hole Temperature	109	
Tool No.	RBT 6-6	
Spacing Recorded	3'-5"	
Equipment -- Location	18 D. Hagan	Hays
Recorded By	Bill Morris	
Witnessed By		

<<< Fold Here >>>

All interpretations are opinions based on inferences from electrical or other measurements and we cannot and do not guarantee the accuracy or correctness of any interpretation, and we shall not, except in the case of gross or willful negligence on our part, be liable or responsible for any loss, costs, damages, or expenses incurred or sustained by anyone resulting from any interpretation made by any of our officers, agents or employees. These interpretations are also subject to our general terms and conditions set out in our current Price Schedule.

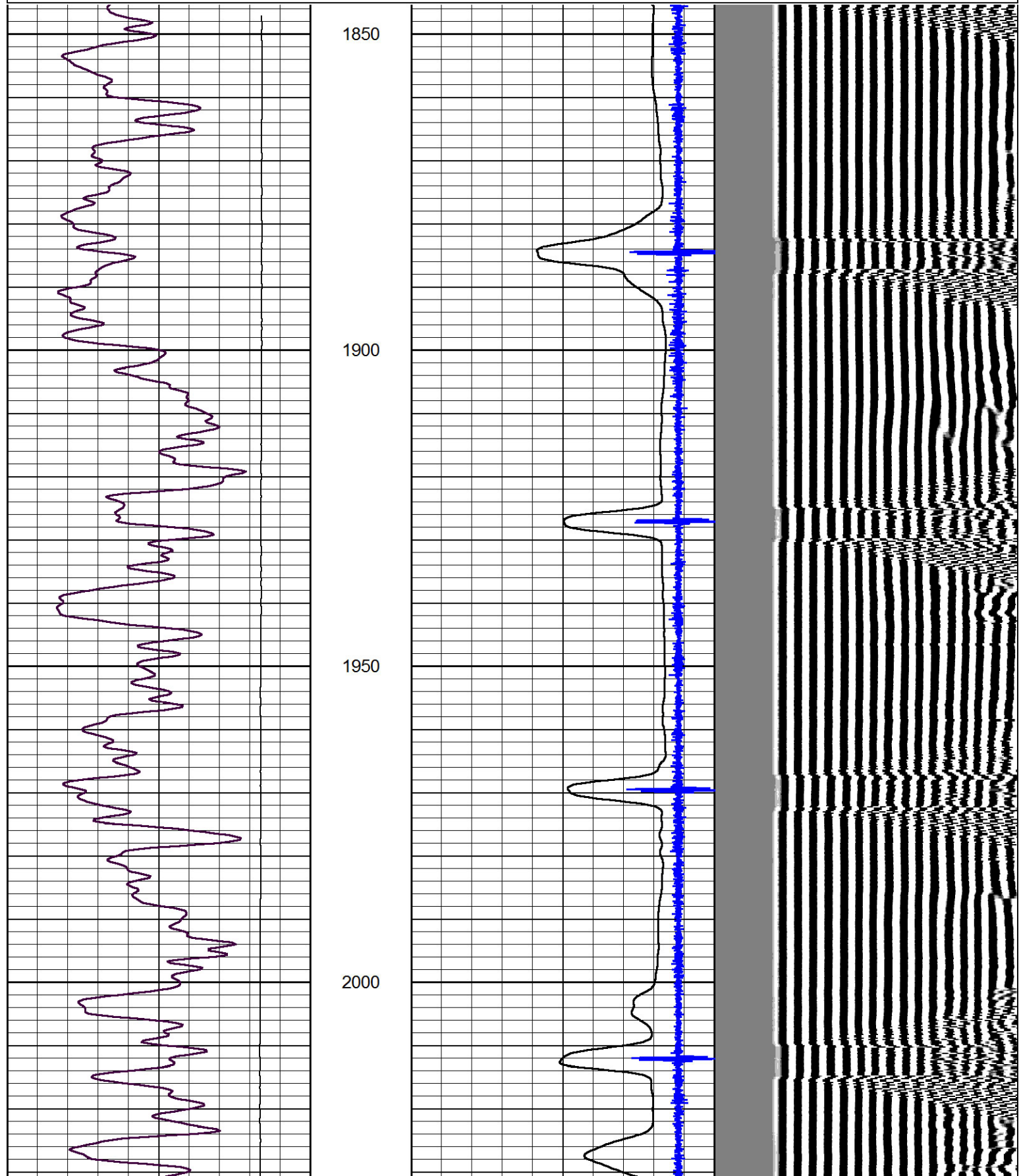
Comments

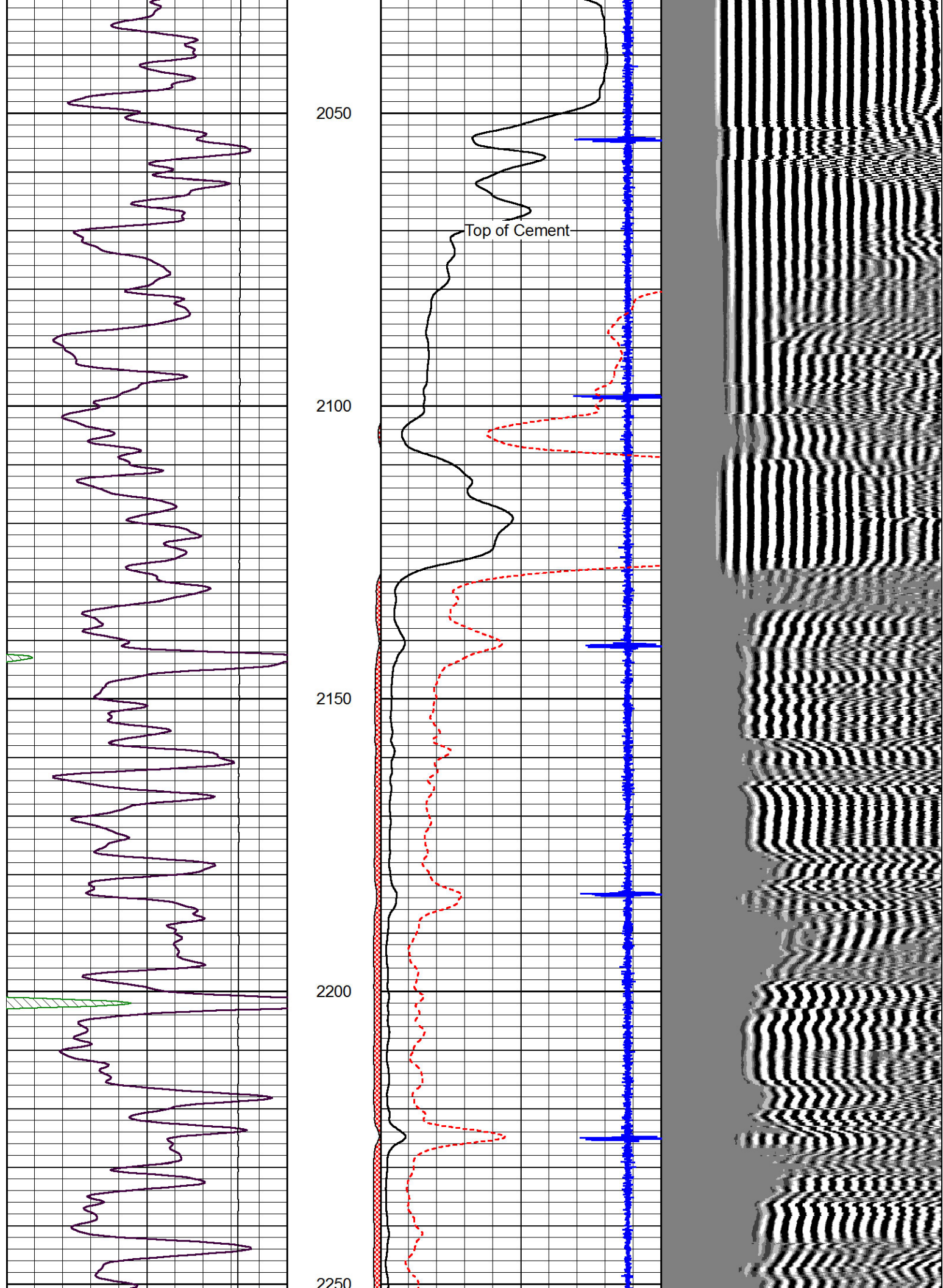
Thank you for using Pioneer Energy Services
785.625.3858

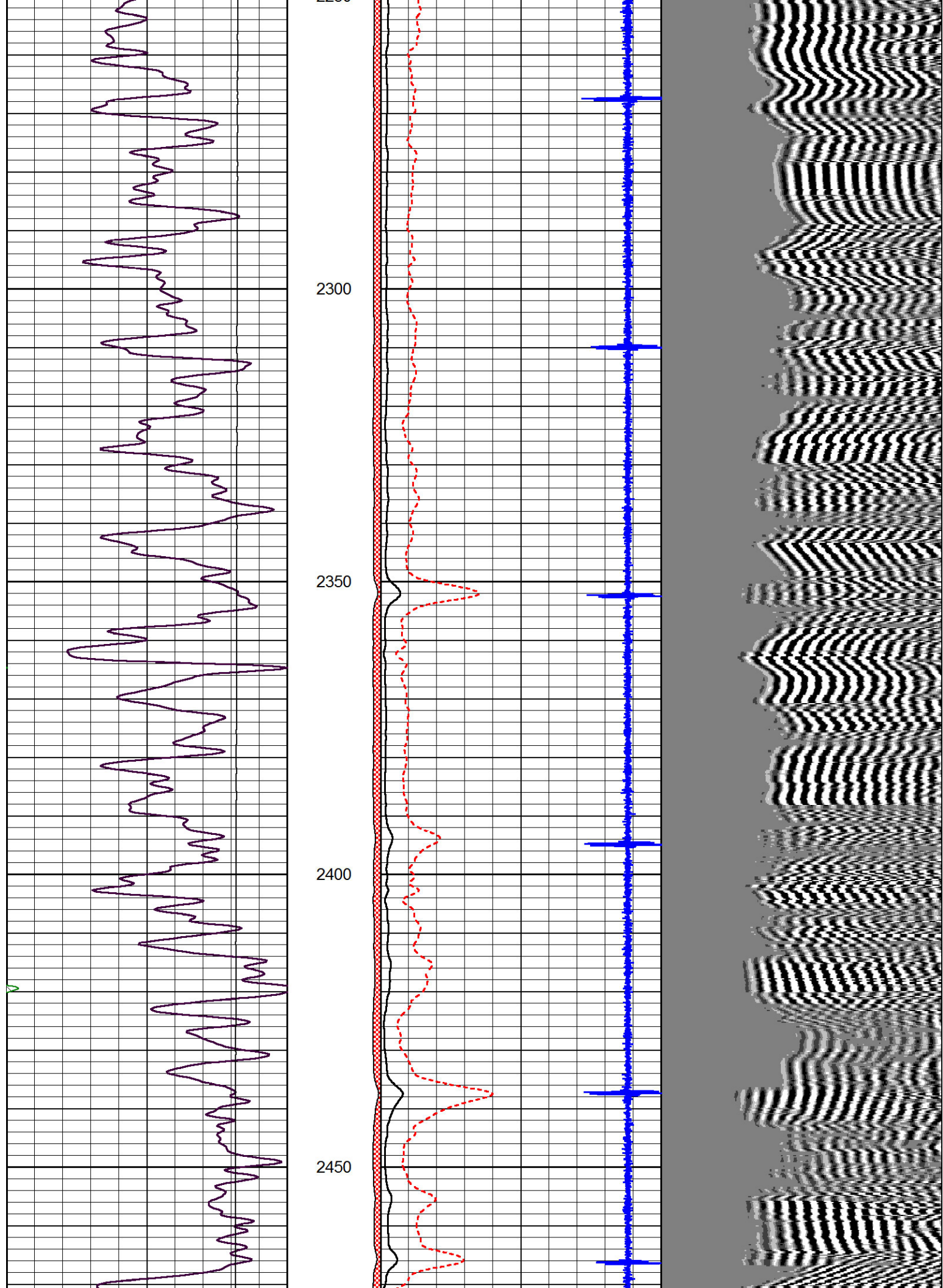
Russell, Ks. South to Winterset Rd.
1 East, 1 South, 1 East, 1.2 North,
East Into

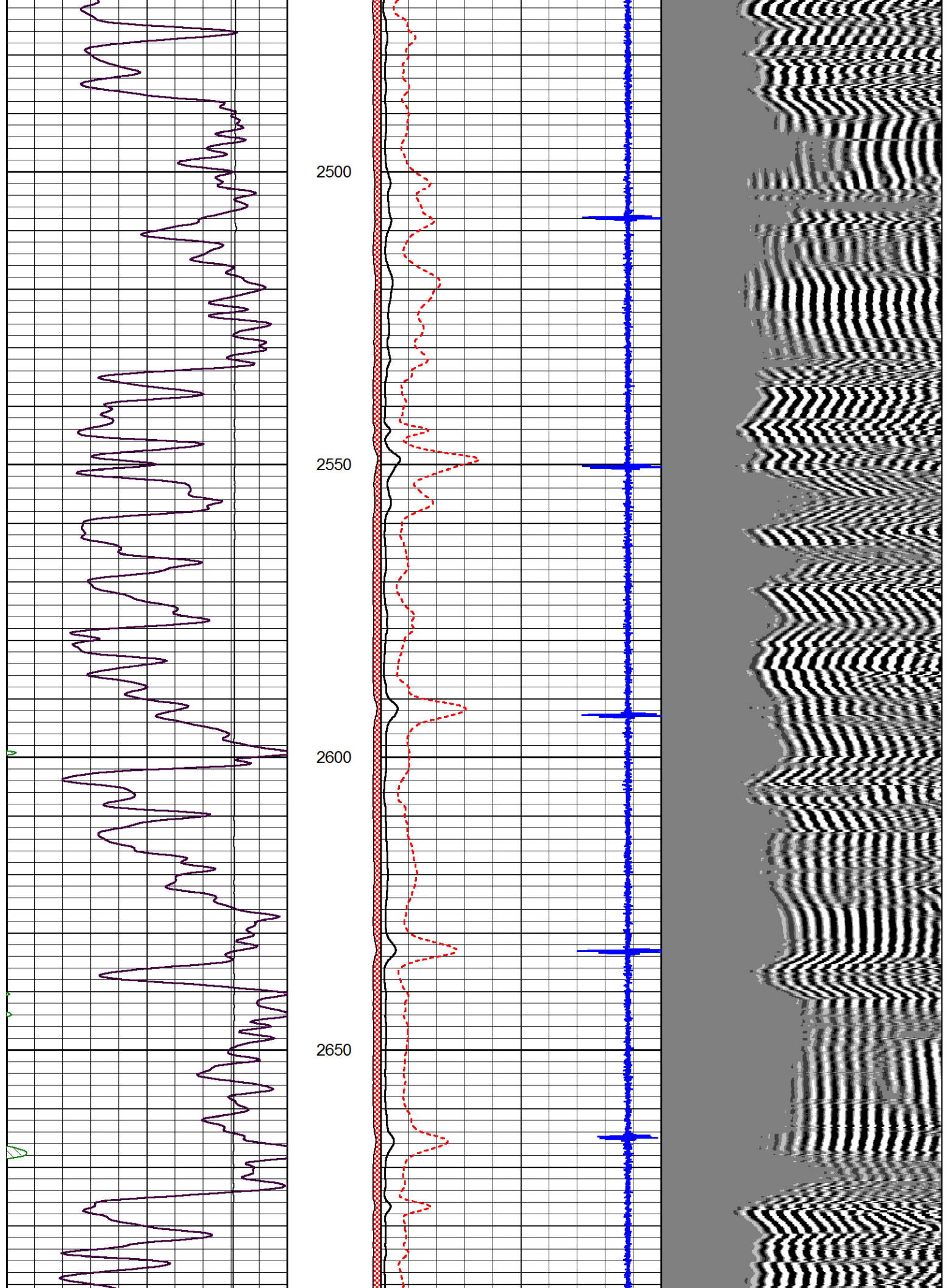
Database File: morrisoil_marguerite_4.db
 Dataset Pathname: grcblgrn/pass3
 Presentation Format: cblgr
 Dataset Creation: Thu Sep 05 11:55:30 2013 by Log 7.0 B1
 Charted by: Depth in Feet scaled 1:240

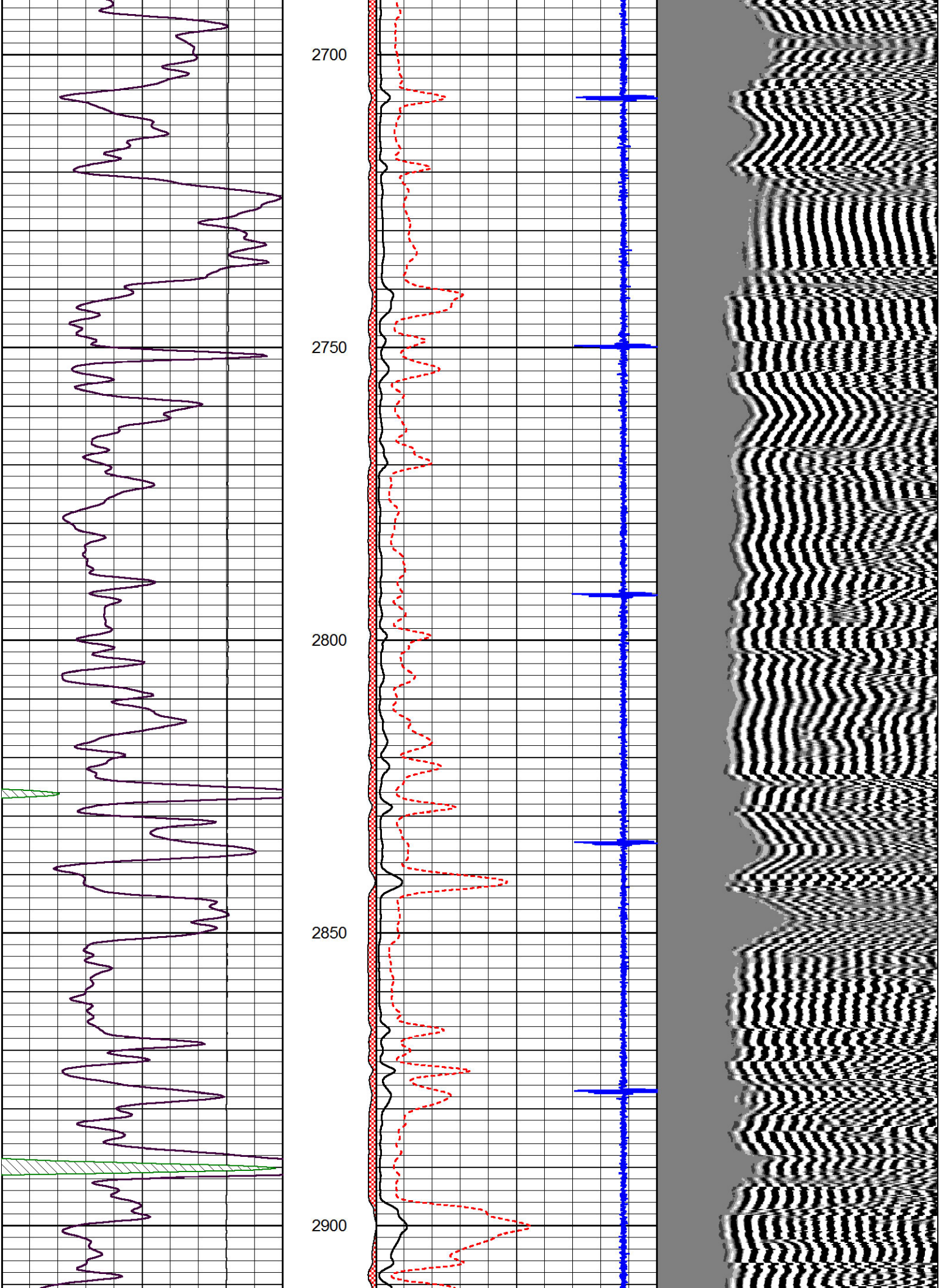
0	Gamma Ray	150	amp3ft	5	Casing Collars	-0.7	200	wvf5ft	1200
			(mV)	0	Pipe Amplitude (mV)	100			
			-100	10	0	Amplified Amplitude (mV)	20		

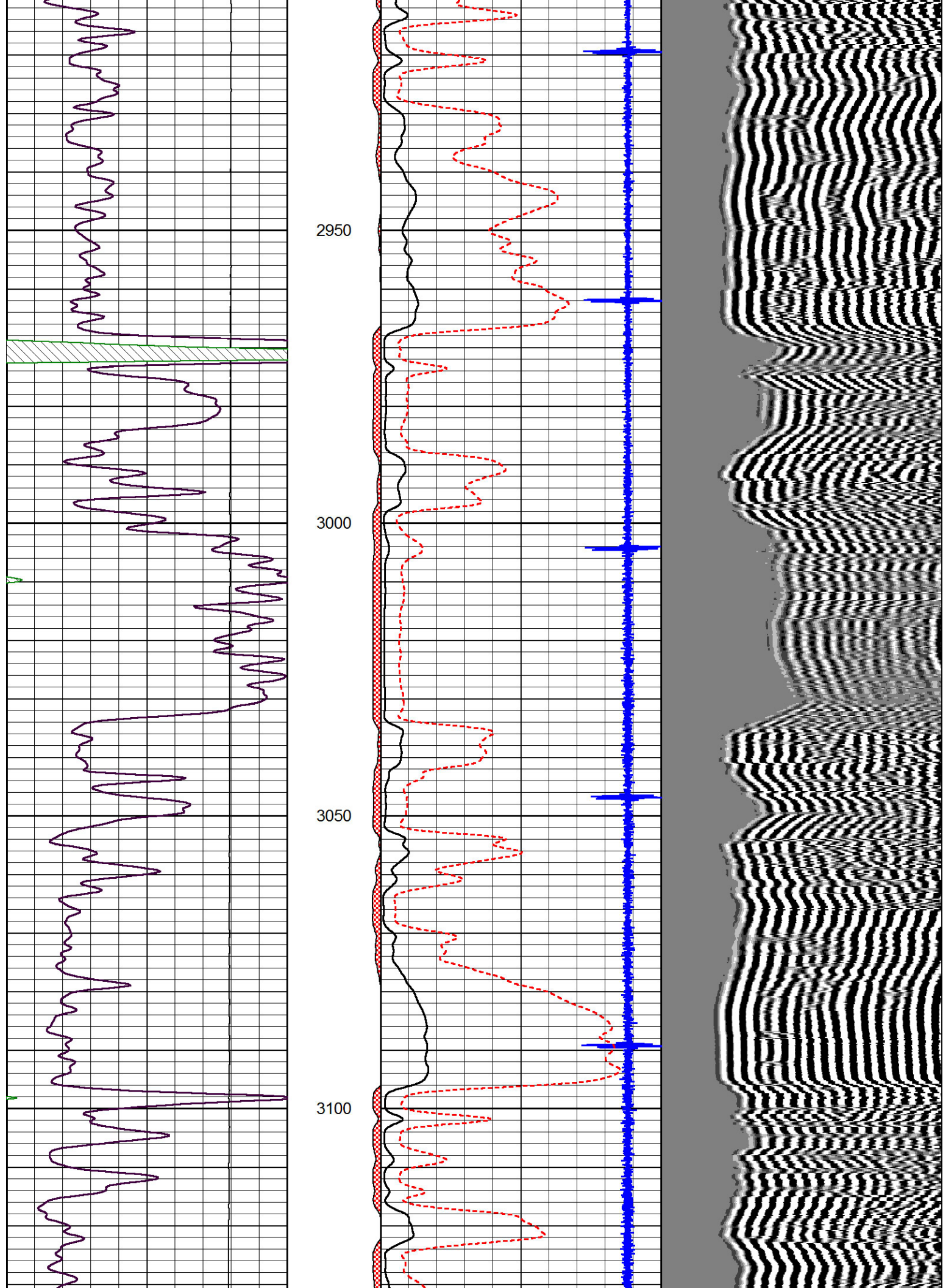


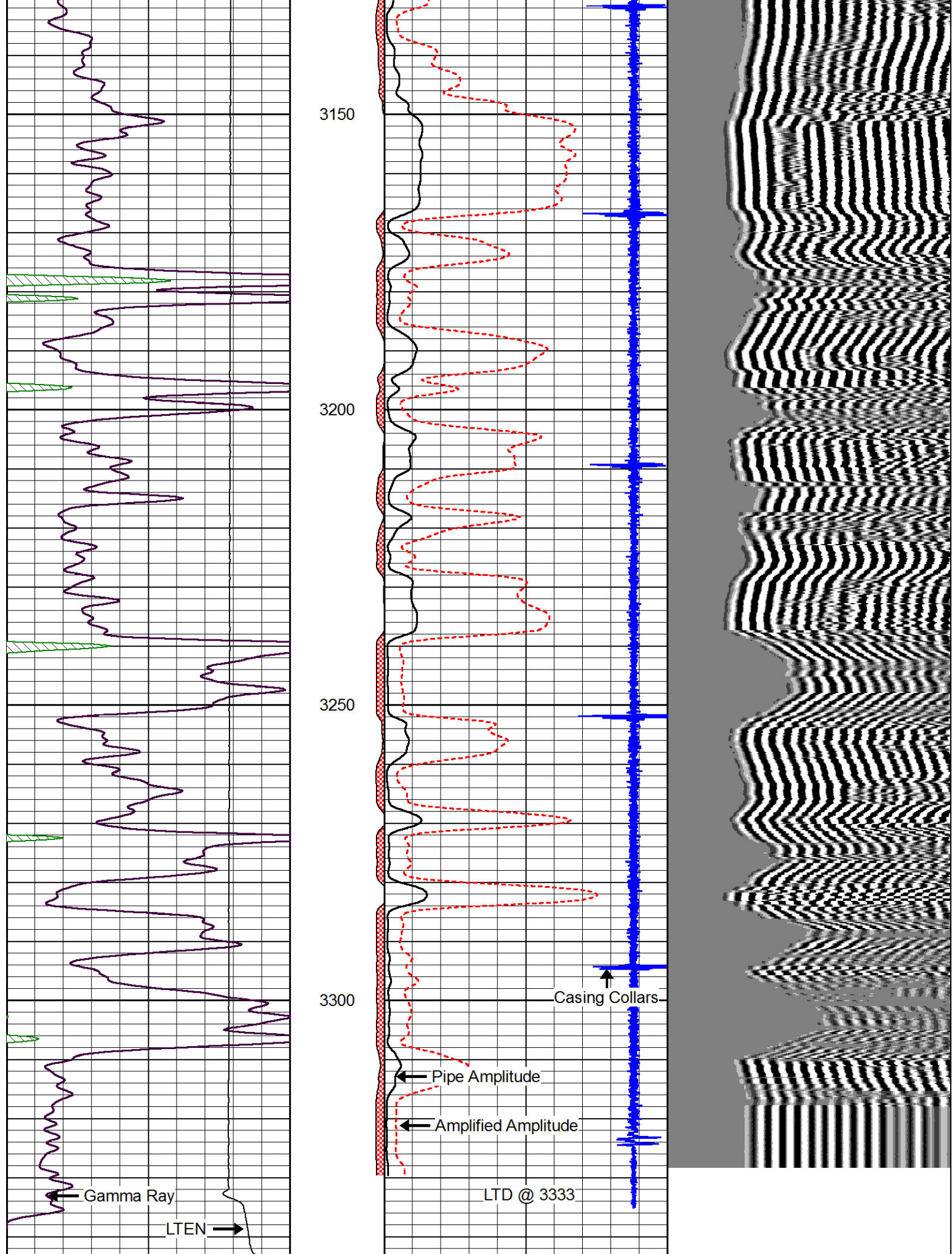












0 Gamma Ray 150 amp3ft 5 Casing Collars -0.7 200 wvf5ft 1200
 (mV) Pipe Amplitude (mV) 100

LTD @ 3333

Casing Collars

Pipe Amplitude

Amplified Amplitude

Gamma Ray

LTEN

3150

3200

3250

3300

(mV)	0	Pipe Amplitude (mV)	100
-100	10	0	Amplified Amplitude (mV)
		0	20



Repeat Section

Database File: morrisoil_marguerite_4.db
 Dataset Pathname: grcblgrn/pass2
 Presentation Format: cblgr
 Dataset Creation: Thu Sep 05 11:45:24 2013 by Log 7.0 B1
 Charted by: Depth in Feet scaled 1:240

0	Gamma Ray	150	amp3ft	5	Casing Collars	-0.7	200	wvf5ft	1200
			(mV)	0	Pipe Amplitude (mV)	100			
			-100	10	0	Amplified Amplitude (mV)	20		

