



**GAMMA RAY  
CEMENT BOND  
COMPLETION LOG**

Company: POSTROCK ENERGY CORP.  
Well: GEORGE, SHYREL A. #13-3  
Field: CHEROKEE BASIN CBM  
County: NEOSHO  
State: KANSAS

Location: 165°-FSL & 1310° FWL  
SE SE SW SW  
SEC 13 TWP 28S RGE 19E  
Log Measured From: QL  
Drilling Measured From: QL  
Elevation: 948'  
K.B. D.F. 948'Other Services: OPEN HOLE  
Date: 6-23-2013

Run Number: 2 NW  
Depth Driller: 732  
Depth Logger: 724.6'

Top Log Interval: 0  
Bottom Logged Interval: 719.6'  
Fluid Level: FULL

Type Fluid: WATER  
Production Casing: 5.5" @ TD  
Max. Recorded Temp.: @  
Estimated Cement Top: @  
Calculated Cement Top: @  
Amount & Type Cement: @  
Amount & Type Admix: @  
Drilling Contractor: @  
Equipment Number: 105  
Location: GORMLEY, R.  
Witnessed By: HAYS, R.

Company: POSTROCK ENERGY CORP.  
Well: GEORGE, SHYREL A. #13-3  
Field: CHEROKEE BASIN CBM  
County: NEOSHO  
State: KANSAS

<<< Fold Here >>>

All interpretations are opinions based on inferences from electrical or other measurements and we cannot and do not guarantee the accuracy or correctness of any interpretation, and we shall not, except in the case of gross or willful negligence on our part, be liable or responsible for any loss, costs, damages, or expenses incurred or sustained by anyone resulting from any interpretation made by any of our officers, agents or employees. These interpretations are also subject to our general terms and conditions set out in our current Price Schedule.

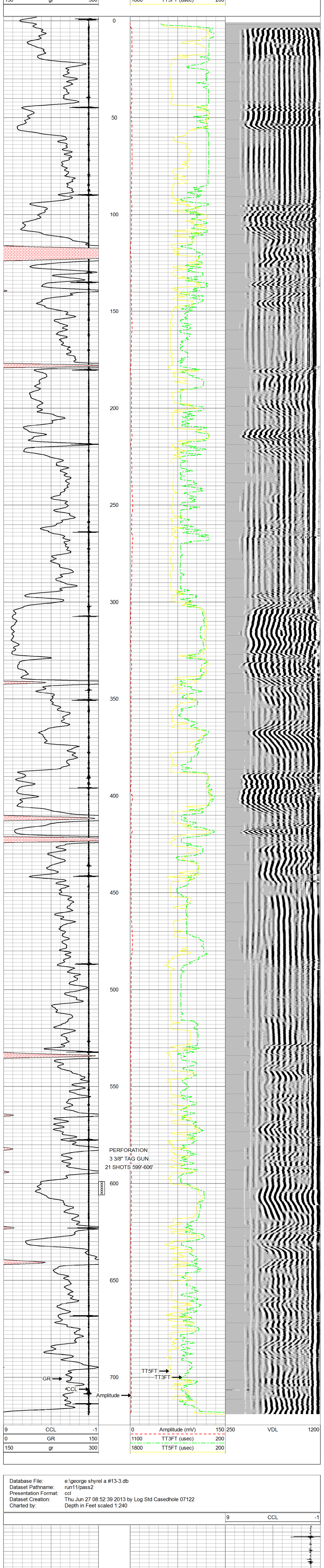
Comments

THANK YOU

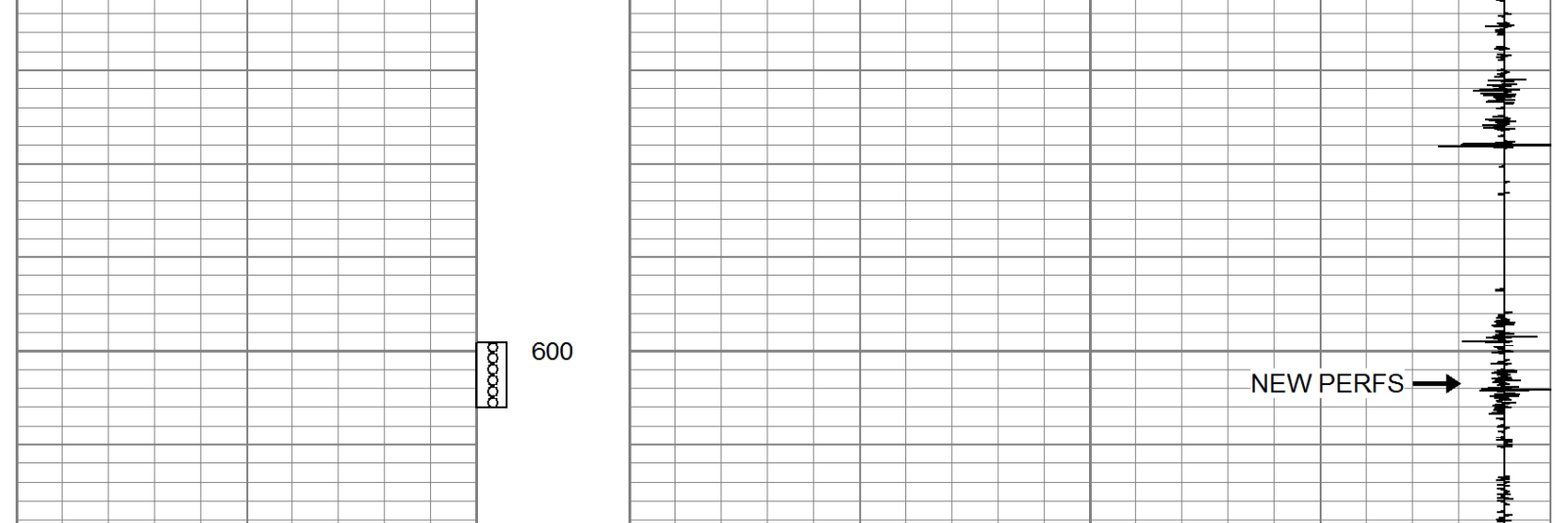
Sensor	Offset (ft)	Schematic	Description	Len (ft)	OD (in)	Wt (lb)
			tekco tekco cent.	2.17	1.69	5.00
WVF3FT	6.58		CBLTEKCO-TEKCO2RCVR (TEKCO169) 1 11/16" TEKCO 2 RCVR DELWARE	9.75	1.69	50.00
WVF5FT	5.58					
WVFCAL	2.17					
WVFSYNC	2.17		tekco tekco cent.	2.17	1.69	5.00

Dataset: george shyrel a #13-3.db: field/well/run1/pass2MERGE  
Total Length: 14.08 ft  
Total Weight: 60.00 lb  
O.D.: 1.69 in

Database File: e:\george shyrel a #13-3.db  
Dataset Pathname: pass2MERGE  
Presentation Format: scbl\_dr  
Dataset Creation: Thu Jun 27 08:31:18 2013  
Charted by: Depth in Feet scaled 1:240



Database File: e:\george shyrel a #13-3.db  
Dataset Pathname: run11/pass2  
Presentation Format: ccl  
Dataset Creation: Thu Jun 27 08:52:39 2013 by Log Std Casedhole 07122  
Charted by: Depth in Feet scaled 1:240



Company: POSTROCK ENERGY CORP.  
Well: GEORGE, SHYREL A. #13-3  
Field: CHEROKEE BASIN CBM  
County: NEOSHO SECTION 13 TWP 28S RGE 19E  
State: KANSAS  
Date: 6-27-2013

