



**GAMMA RAY  
CEMENT BOND  
COMPLETION LOG**

MYRINE  
SERVICES, INC.  
CHANUTE, KANSAS

Company	POSTROCK ENERGY CORP.	Location:	1785 FSJ & 1170 FWL NE SE NW SW	Other Services	OPEN HOLE 6/20/13
Well	GROSDIDIER, FRANCIS E. #14-7	Perment Baum	SEC 14 TWP 28S RGE 20E	Elevation	917'
Field	CHEROKEE BASIN CBM	Log Measured From	GL	K.B.	D.F. 917'
State	KANSAS	Drilling Measured From	GL		
County	NEOSHO	Date	6-24-2013		
API #	15-133-27679-00-00	Run Number	2 NW		
Depth Driller	624.7'	Depth Logger	624.7'		
Top Log Interval	0	Bottom Logged Interval	619.7'		
Fluid Level	FULL	Type Fluid	WATER		
Production Casing	5.5" @ TD	Max. Recorded Temp.			
Estimated Cement Top		Calculated Cement Top			
Amount & Type Cement		Drilling Contractor	105		
Equipment Number		Location	GORMLEY, R		
Recorded By	HAYS, R	Witnessed By			

<<< Fold Here >>>

All interpretations are opinions based on inferences from electrical or other measurements and we cannot and do not guarantee the accuracy or correctness of any interpretation, and we shall not, except in the case of gross or willful negligence on our part, be liable or responsible for any loss, costs, damages, or expenses incurred or sustained by anyone resulting from any interpretation made by any of our officers, agents or employees. These interpretations are also subject to our general terms and conditions set out in our current Price Schedule.

Comments

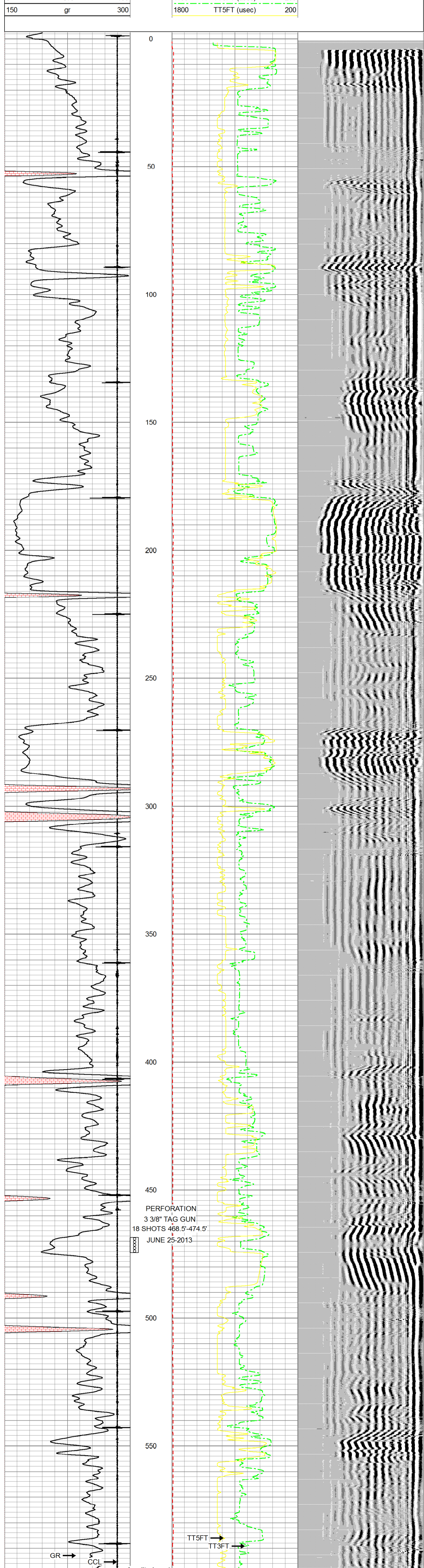
THANK YOU

Sensor	Offset (ft)	Schematic	Description	Len (ft)	OD (in)	Wt (lb)
			tekco tekco cent.	2.17	1.69	5.00
WVF3FT	6.58		CBLTEKCO-TEKCO2RCVR (TEKCO169) 1 11/16" TEKCO 2 RCVR DELWARE	9.75	1.69	50.00
WVF5FT	5.58					
WVFCAL	2.17					
WVFSYNC	2.17					
			tekco tekco cent.	2.17	1.69	5.00

Dataset: grosdidier francis e #14-7.db: field/well/run1/pass2MERGE  
Total Length: 14.08 ft  
Total Weight: 60.00 lb  
O.D.: 1.69 in

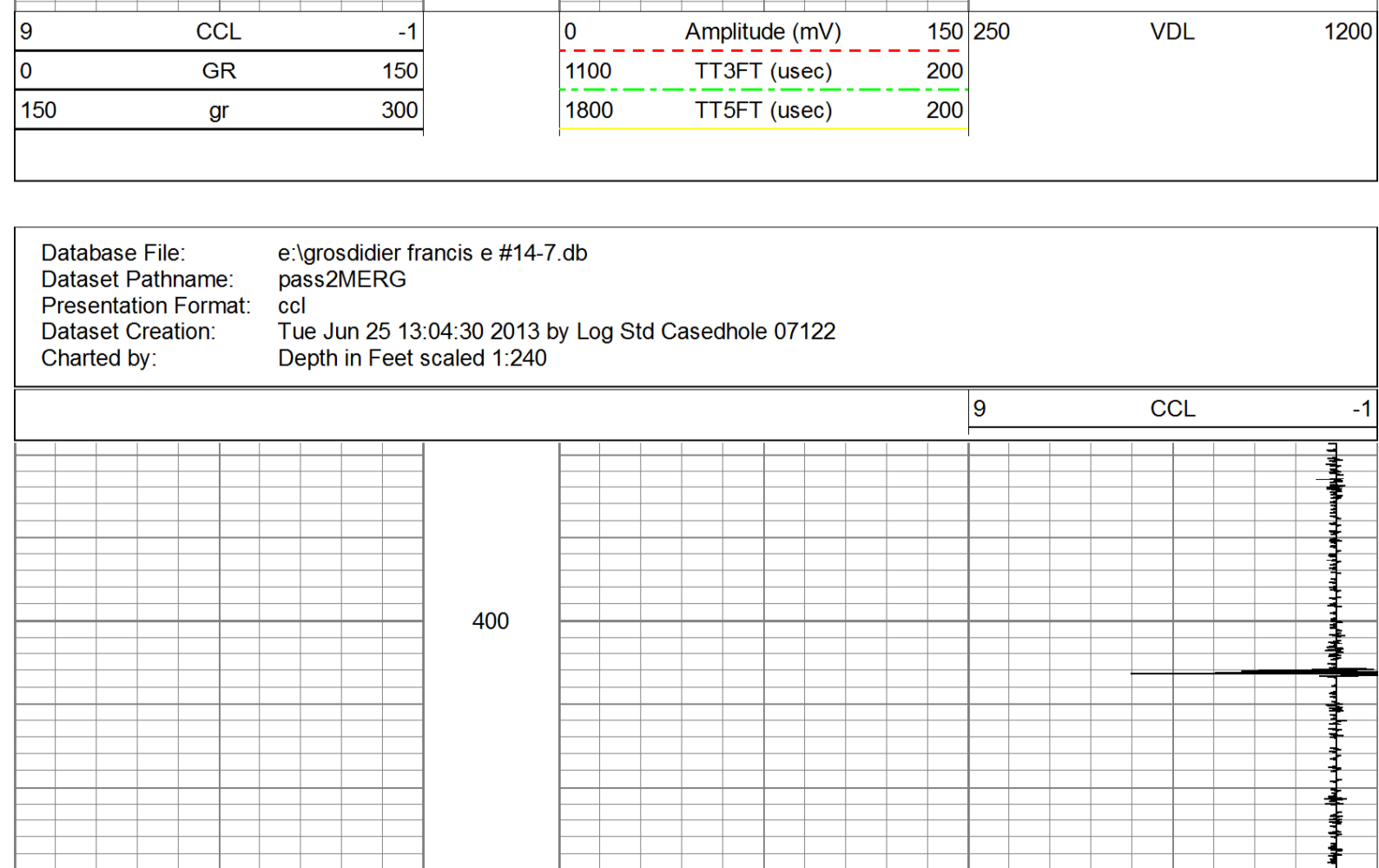
Database File: e:\grosdidier francis e #14-7.db  
Dataset Pathname: pass2MERGE  
Presentation Format: scbl\_dr  
Dataset Creation: Mon Jun 24 09:48:29 2013  
Charted by: Depth in Feet scaled 1:240

9	CCL	-1	0	Amplitude (mV)	150	250	VDL	1200
0	GR	150	1100	TT3FT (usec)	200			
150	gr	300	1800	TT5FT (usec)	200			



9	CCL	-1	0	Amplitude (mV)	150	250	VDL	1200
0	GR	150	1100	TT3FT (usec)	200			
150	gr	300	1800	TT5FT (usec)	200			

Database File: e:\grosdidier francis e #14-7.db  
Dataset Pathname: pass2MERGE  
Presentation Format: ccl  
Dataset Creation: Tue Jun 25 13:04:30 2013 by Log Std Casedhole 07122  
Charted by: Depth in Feet scaled 1:240



	Company	POSTROCK ENERGY CORP.
	Well	GROSDIDIER, FRANCIS E. #14-7
	Field	CHEROKEE BASIN CBM
	County	NEOSHO SECTION 14 TWP 28S RGE 20E
	State	KANSAS
Date	6-24-2013	