



**GAMMA RAY  
CEMENT BOND  
COMPLETION LOG**

**POSTROCK ENERGY CORP.**  
ECCO RANCH #33-4  
CHEROKEE BASIN CBM

**WOODSON**  
KANSAS

**WOODSON**  
KANSAS

**WOODSON**  
KANSAS

**WOODSON**  
KANSAS

**WOODSON**  
KANSAS

**WOODSON**  
KANSAS

**WOODSON**  
KANSAS

**WOODSON**  
KANSAS

<<< Fold Here >>>

All interpretations are opinions based on inferences from electrical or other measurements and we cannot and do not guarantee the accuracy or correctness of any interpretation, and we shall not, except in the case of gross or willful negligence on our part, be liable or responsible for any loss, costs, damages, or expenses incurred or sustained by anyone resulting from any interpretation made by any of our officers, agents or employees. These interpretations are also subject to our general terms and conditions set out in our current Price Schedule.

**Comments**

THANK YOU

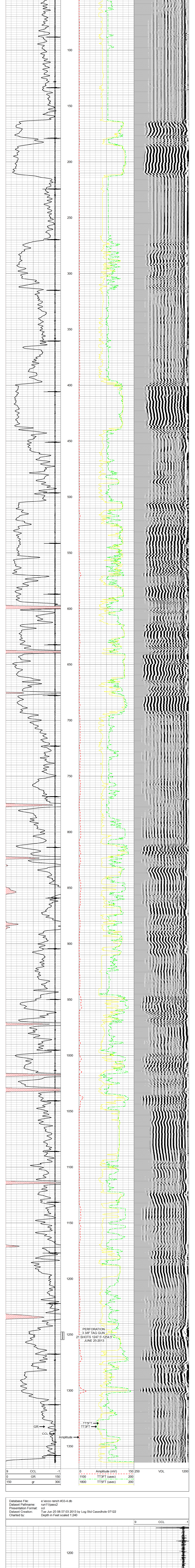
Sensor	Offset (ft)	Schematic	Description	Len (ft)	OD (in)	Wt (lb)
tekco			tekco cent.	2.17	1.69	5.00
WV3F3T	6.58		CBLTEKCO-TEKCO2RCVR (TEKCO169) 1 11/16" TEKCO 2 RCVR DELWARE	9.75	1.69	50.00
WV5F5T	5.58					
WVFCAL	2.17					
WVFSYNC	2.17					
tekco			tekco cent.	2.17	1.69	5.00

Dataset: ecco RANCH #33-4.db: field/well/run1/pass2MERGE  
Total Length: 14.08 ft  
Total Weight: 60.00 lb  
O.D.: 1.69 in

Database File: e:\ecco ranch #33-4.db  
Dataset Pathname: pass2MERGE  
Presentation Format: scl\_dr  
Dataset Creation: Mon Jun 24 14:28:47 2013  
Charted by: Depth in Feet scaled 1:240

9 CCL -1  
0 GR 150  
150 gr 300

0 Amplitude (mV) 150 250 VDL 1200  
1100 TT3FT (usec) 200  
1800 TT5FT (usec) 200



Database File: e:\ecco ranch #33-4.db  
Dataset Pathname: run11/pass2  
Presentation Format: ccl  
Dataset Creation: Tue Jun 25 08:57:03 2013 by Log Std Casedhole 07122  
Charted by: Depth in Feet scaled 1:240

9 CCL -1  
1200  
1250  
NEW PERFS  
9 CCL -1

**ORNISH WIRELINE SERVICES, INC. CHANUTE, KANSAS**  
Company: POSTROCK ENERGY CORP.  
Well: ECCO RANCH #33-4  
Field: CHEROKEE BASIN CBM  
County: WOODSON SECTION 4 TWP 26S RGE 15E  
State: KANSAS  
Date: 6-24-2013