



**COMPLETION
& PRODUCTION
SERVICES CO.**

**MICRO
LOG**

Company WILTON PETROLEUM
Well DOWELL I #2
Field DOWELL WEST
County GOVE
State KANSAS

Company WILTON PETROLEUM
Well DOWELL I #2
Field DOWELL WEST
County GOVE State KANSAS

Location: 660' FSL & 990' FEL
API # : 15-063-22144-0000
SEC 33 TWP 15S RGE 29W
Permanent Datum GROUND LEVEL Elevation 2624
Log Measured From KELLY BUSHING 9' A.G.L.
Drilling Measured From KELLY BUSHING
Elevation
K.B. 2633
D.F. 2631
G.L. 2624

Date	11/7/13
Run Number	TWO
Depth Driller	4100
Depth Logger	4102
Bottom Logged Interval	4084
Top Log Interval	3400
Casing Driller	8 5/8" @ 352'
Casing Logger	352'
Bit Size	7 7/8
Type Fluid in Hole	CHEMICAL MUD
Density / Viscosity	9.4 / 60
pH / Fluid Loss	11.0 / 6.0
Source of Sample	FLOWLINE
Rin @ Meas. Temp	1.50 @ 75F
Rmf @ Meas. Temp	1.13 @ 75F
Rmc @ Meas. Temp	1.80 @ 75F
Source of Rmf / Rmc	MEASURED
Rin @ BHT	0.96 @ 117F
Time Circulation Stopped	2 HOURS
Time Logger on Bottom	
Maximum Recorded Temperature	117F
Equipment Number	680
Location	HAYS, KS.
Recorded By	JEFF GRONEMEG
Witnessed By	MACKLIN ARMSTRONG

<<< Fold Here >>>

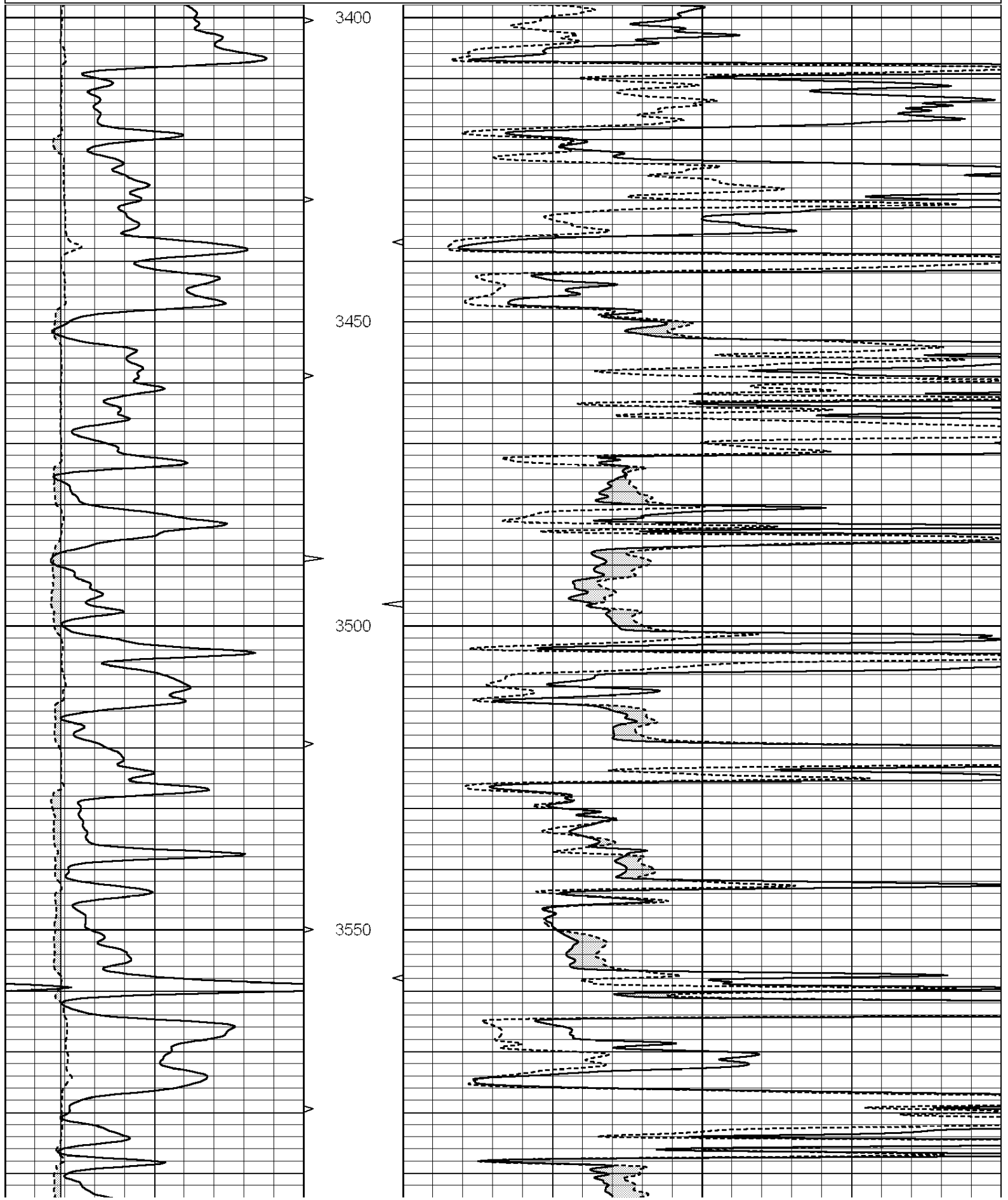
All interpretations are opinions based on inferences from electrical or other measurements and we cannot and do not guarantee the accuracy or correctness of any interpretation, and we shall not, except in the case of gross or willful negligence on our part, be liable or responsible for any loss, costs, damages, or expenses incurred or sustained by anyone resulting from any interpretation made by any of our officers, agents or employees. These interpretations are also subject to our general terms and conditions set out in our current Price Schedule.

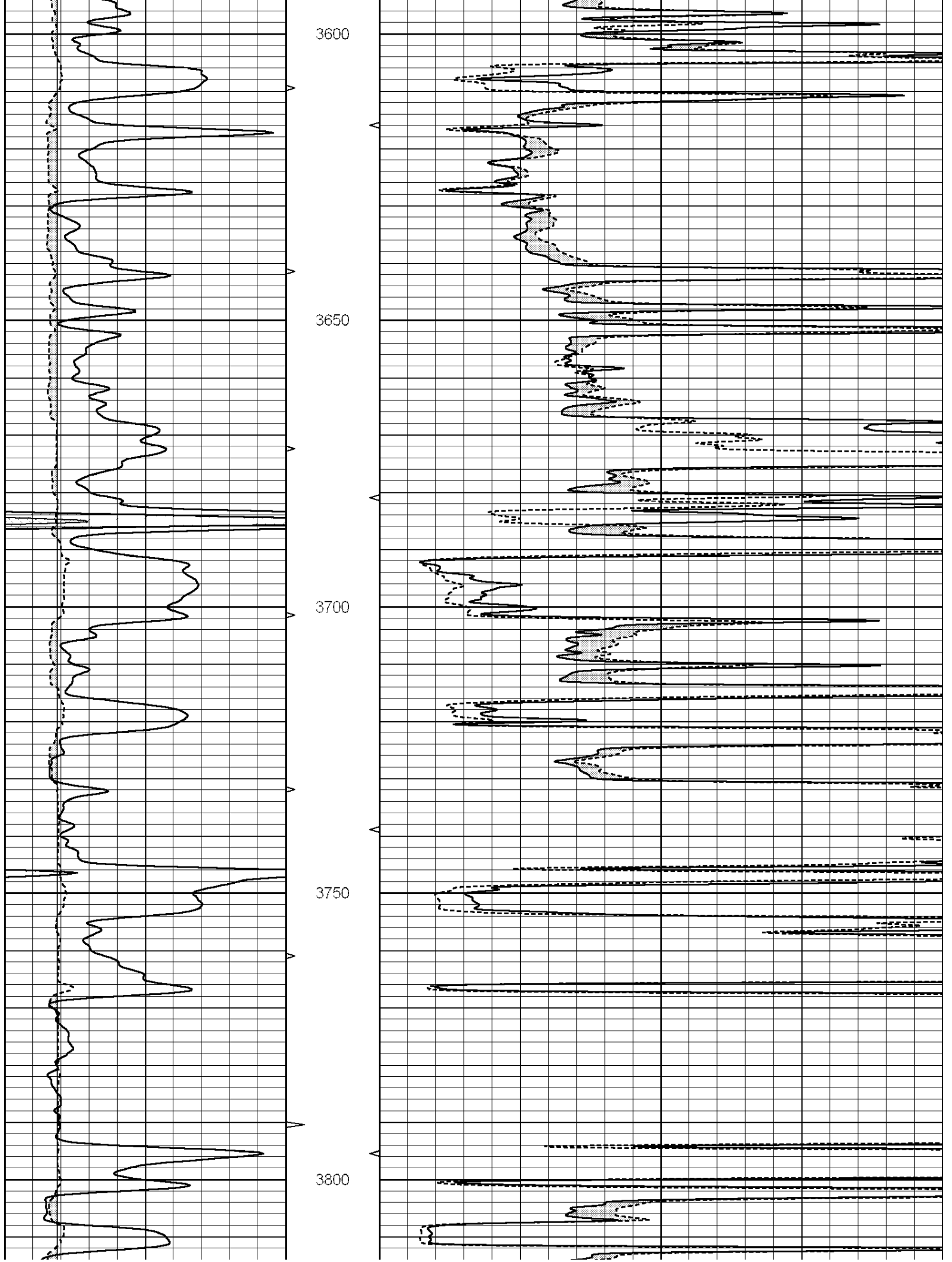
Comments

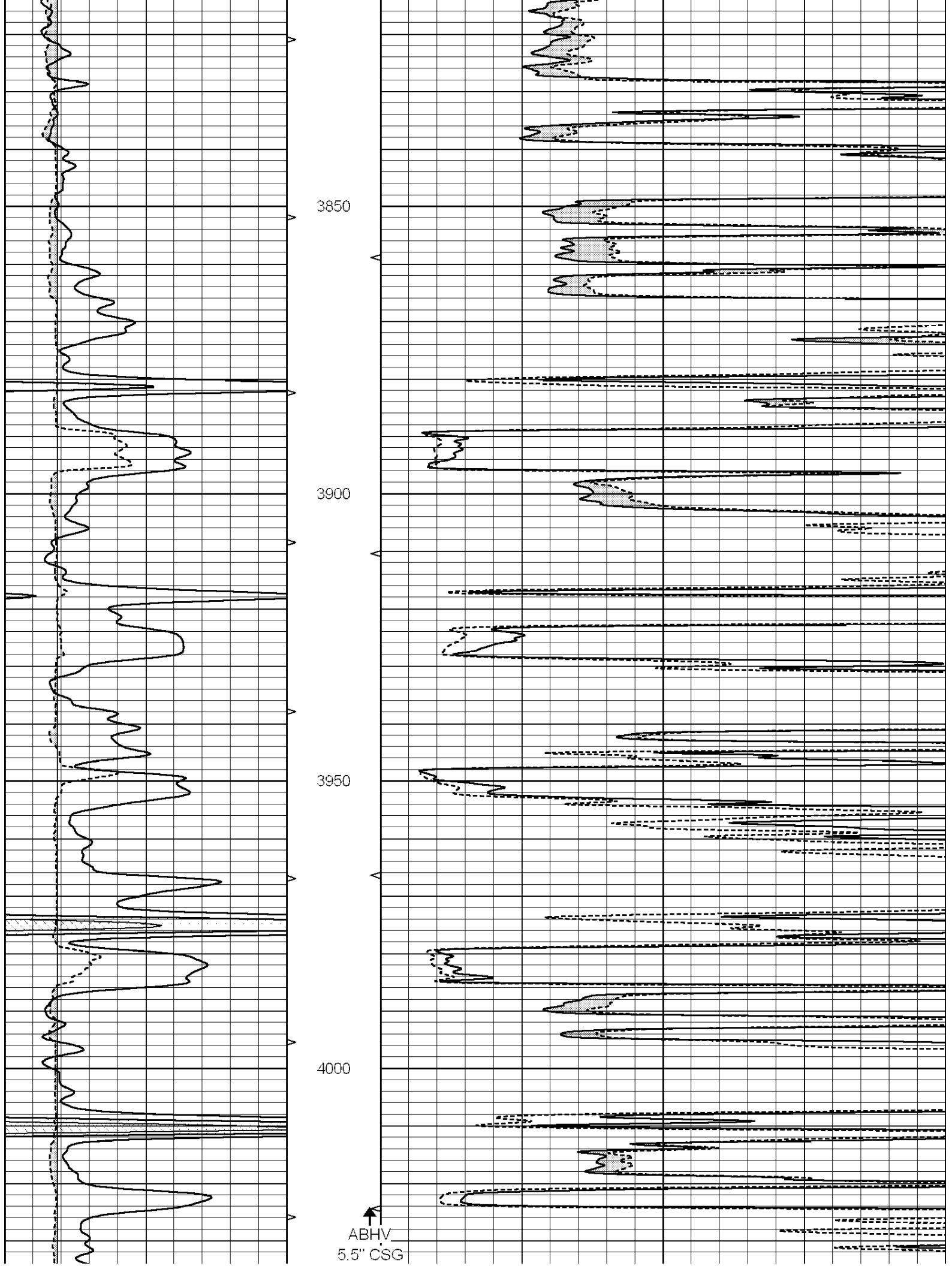
THANK YOU FOR USING NABORS COMPLETION & PRODUCTION SVCS. (785) 628-6395

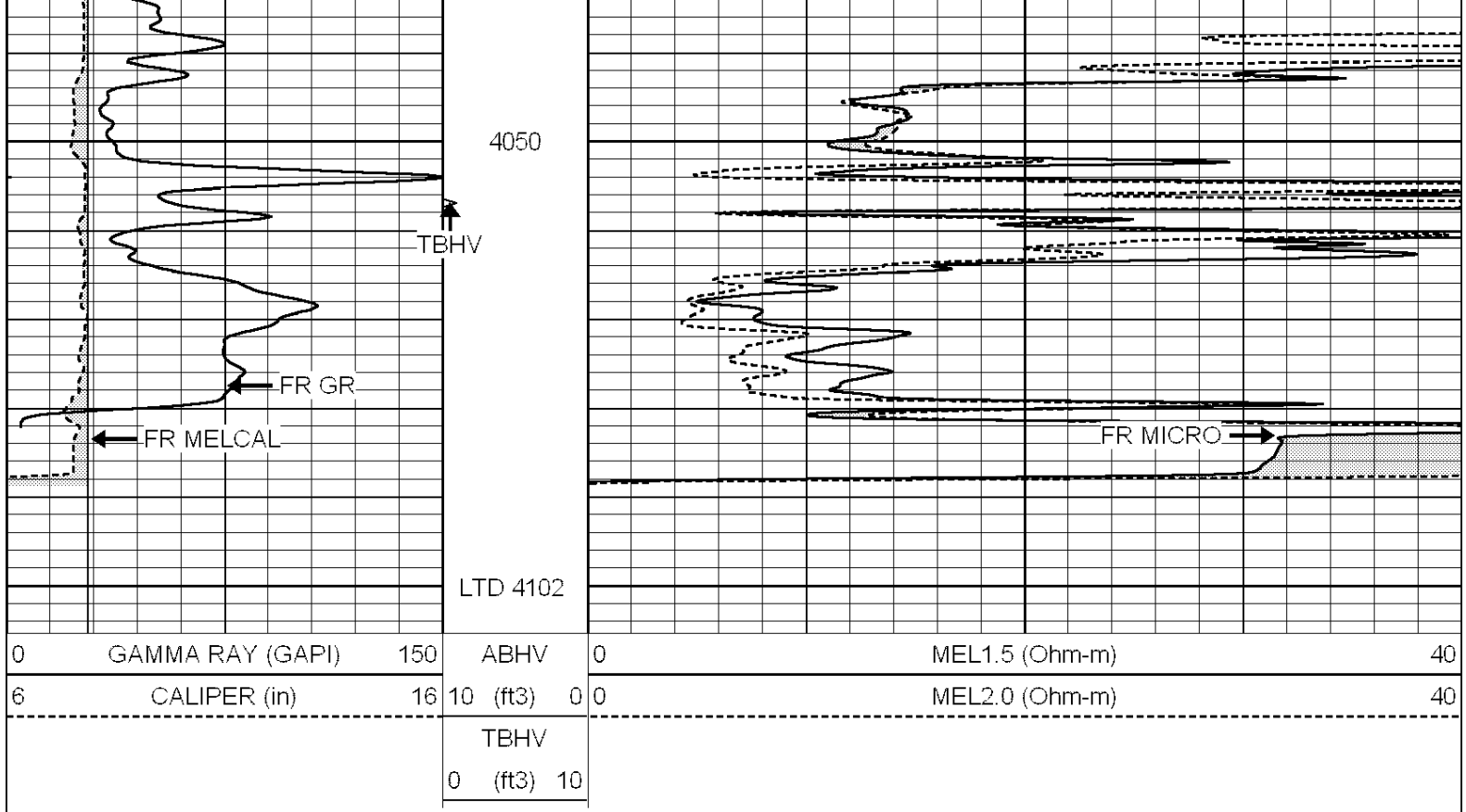
DIRECTIONS:
GOVE, KS - SOUTH TO GOVE/LANE COUNTY LINE
2 1/2 MILES WEST - NORTH INTO

0	GAMMA RAY (GAPI)	150	ABHV	0	MEL1.5 (Ohm-m)	40
6	CALIPER (in)	16	10 (ft3)	0 0	MEL2.0 (Ohm-m)	40
			TBHV			
			0 (ft3)			





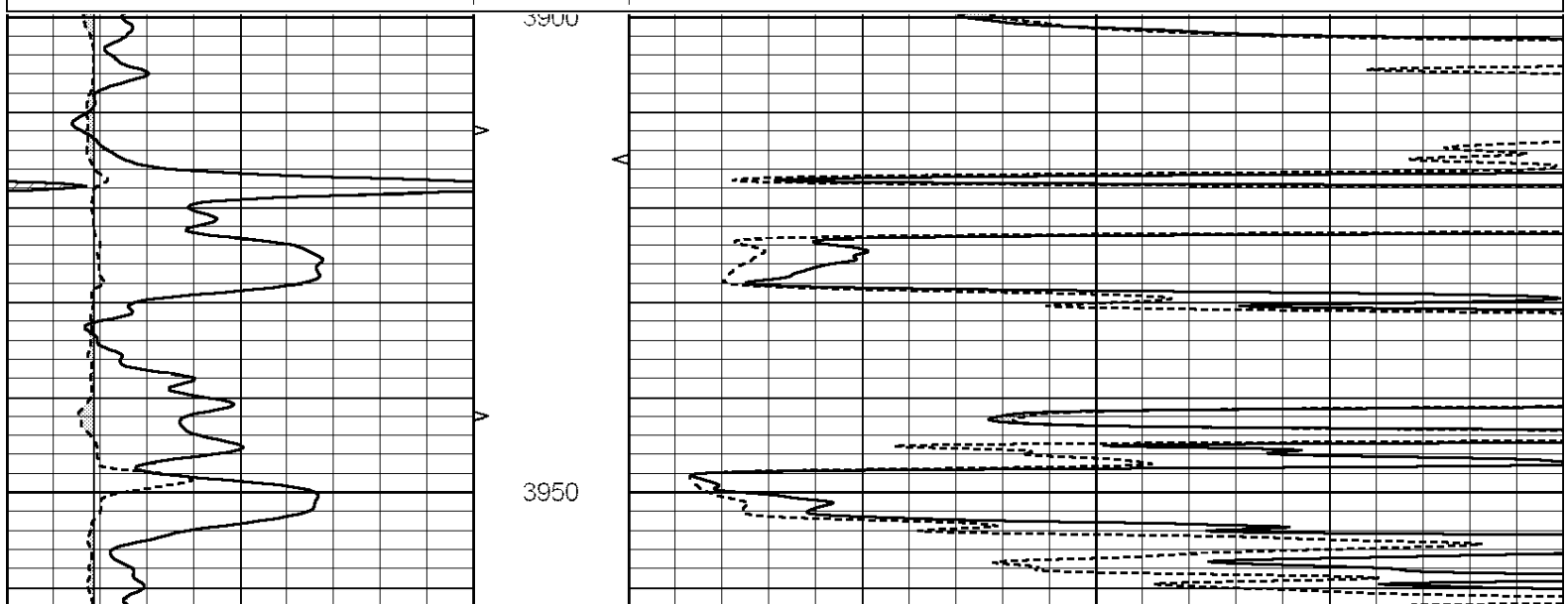


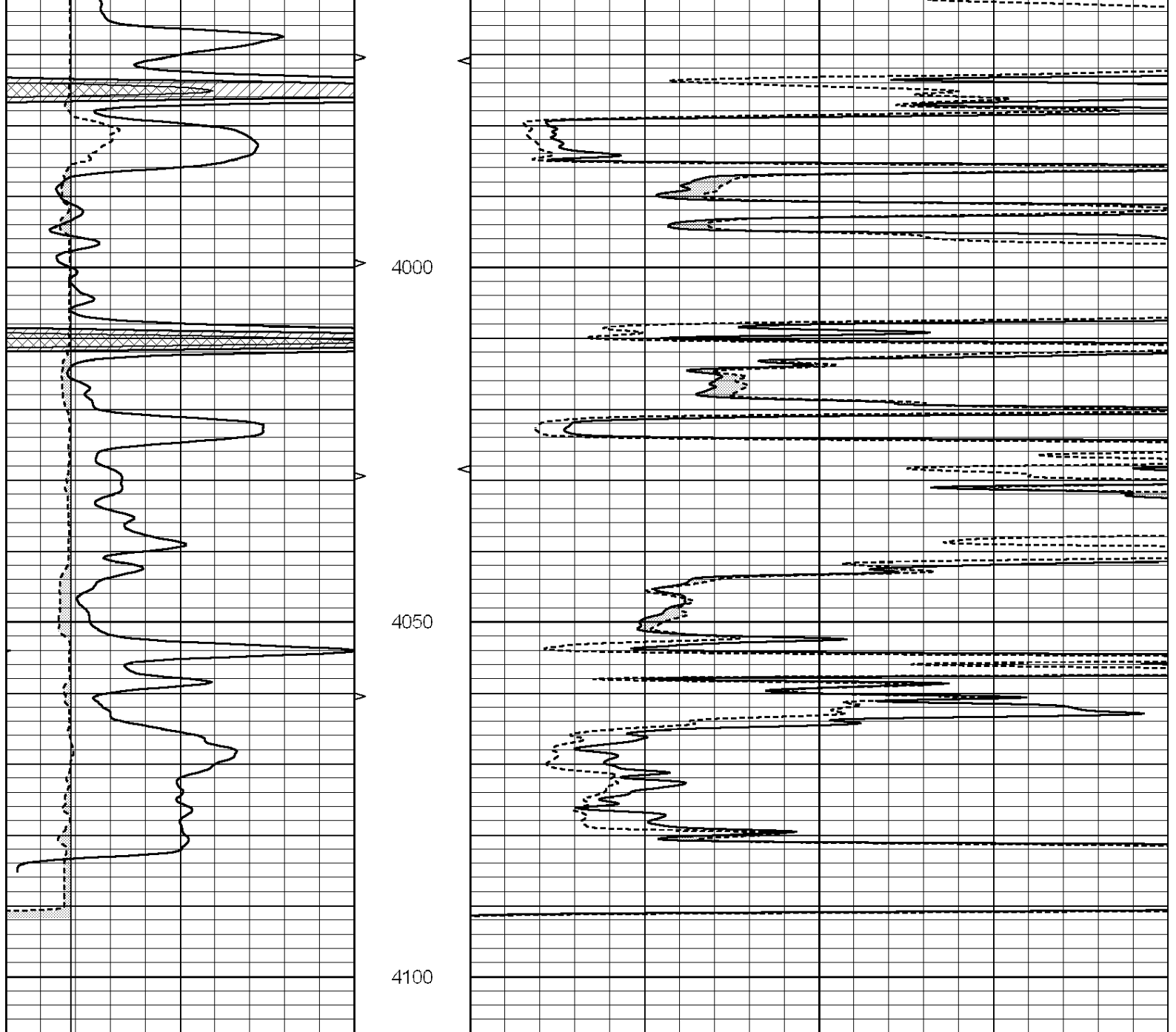


REPEAT SECTION

Database File: 012086ddn.db
 Dataset Pathname: pass5.1
 Presentation Format: _micro
 Dataset Creation: Thu Nov 07 11:59:59 2013 by Calc Open-Cased 090629
 Charted by: Depth in Feet scaled 1:240

0	GAMMA RAY (GAPI)	150	ABHV	0	MEL1.5 (Ohm-m)	40
6	CALIPER (in)	16	10 (ft3)	0	MEL2.0 (Ohm-m)	40
			TBHV			
			0 (ft3)	10		





0	GAMMA RAY (GAPI)	150	ABHV	0	MEL1.5 (Ohm-m)	40
6	CALIPER (in)	16	10 (ft3)	0	MEL2.0 (Ohm-m)	40
			TBHV			
			0 (ft3)	10		

Calibration Report

Database File: 012086ddn.db
 Dataset Pathname: pass6.1
 Dataset Creation: Thu Nov 07 12:22:54 2013 by Calc Open-Cased 090629

MICRO Calibration Report

Serial Number: MICRO6
 Tool Model: PROBE
 Performed: Sun Jun 16 11:26:16 2013

Caliper Calibration: Gain=5.542 Offset=-1.270

References Low Cal High Cal
 8.000 14.000

References	1.431	2.513
------------	-------	-------

1.5" Calibration:	Gain=45.075	Offset=-0.700
References	Low Cal 0.000	High Cal 20.000
Readings	0.004	1.196

2" Calibration:	Gain=50.041	Offset=-0.600
References	Low Cal 0.000	High Cal 20.000
Readings	0.006	0.913

Gamma Ray Calibration Report

Serial Number:	GR2
Tool Model:	OPEN
Performed:	Mon Dec 19 12:24:29 2005

Calibrator Value:	1.0	GAPI
-------------------	-----	------

Background Reading:	0.0	cps
Calibrator Reading:	1.0	cps

Sensitivity:	0.3200	GAPI/cps
--------------	--------	----------