



DUAL RECEIVER CEMENT BOND LOG

Company: AMERICAN WARRIOR, INC.
Well: WIEDEMAN-DIANNE UNIT #1
Field: HINNERGARDT

County: NESS State: KANSAS
Location: 2600' FSL & 1650' FEL
API #: 15-135-23641-0000

Company: AMERICAN WARRIOR, INC.
Well: WIEDEMAN-DIANNE UNIT #1
Field: HINNERGARDT

County: NESS State: KANSAS
Location: 2600' FSL & 1650' FEL
API #: 15-135-23641-0000

Well: WIEDEMAN-DIANNE UNIT #1
Field: HINNERGARDT
County: NESS State: KANSAS

SEC 20 TWP 19S RGE 2W
Permanet Datum: GROUND LEVEL Elevation: 2277
Log Measured From: KELLY BUSHING 6 A.G.L.
Drilling Measured From: KELLY BUSHING G.L. 2277

Date: SEP 25 2013
Run Number: ONE
Depth: 4413
Bottom Log Interval: 4410
Top Log Interval: 3300

Open Hole Size: 8 1/2"
Type Fluid: WATER
Estimated Cement Top: 117F
Estimated Cement Top: 3390

Time Well Ready: //
Time Logger on Bottom: //
Equipment Number: P128
Revised By: BOB KILS
Witnessed By: SCOTT COPSAUR

Run Number: 213
Bit: 213
From: 228
To: 4413
Size: 2 1/2
Weight: 10
Tubing Record: From: To

Cement Record: Size: 8 5/8
Pack String: 00
Production String: 5 1/2
Well: WFFI
Top: 00
Bottom: 223
4412

Production String: 5 1/2
Well: WFFI
Top: 00
Bottom: 223
4412

Production String: 5 1/2
Well: WFFI
Top: 00
Bottom: 223
4412

Production String: 5 1/2
Well: WFFI
Top: 00
Bottom: 223
4412

Production String: 5 1/2
Well: WFFI
Top: 00
Bottom: 223
4412

Production String: 5 1/2
Well: WFFI
Top: 00
Bottom: 223
4412

Production String: 5 1/2
Well: WFFI
Top: 00
Bottom: 223
4412

Production String: 5 1/2
Well: WFFI
Top: 00
Bottom: 223
4412

Company	AMERICAN WARRIOR, INC.
Well	WIEDEMAN-DIANNE UNIT #1
Field	HINNERGARDT
County	NESS
State	KANSAS
Location	2600' FSL & 1650' FEL
API #	15-135-23641-0000
Other Services	
Company	AMERICAN WARRIOR, INC.
Well	WIEDEMAN-DIANNE UNIT #1
Field	HINNERGARDT
County	NESS
State	KANSAS
Location	2600' FSL & 1650' FEL
API #	15-135-23641-0000
Other Services	
Permanet Datum	GROUND LEVEL Elevation: 2277
Log Measured From	KELLY BUSHING 6 A.G.L.
Drilling Measured From	KELLY BUSHING G.L. 2277
Date	SEP 25 2013
Run Number	ONE
Depth	4413
Bottom Log Interval	4410
Top Log Interval	3300
Open Hole Size	8 1/2"
Type Fluid	WATER
Estimated Cement Top	117F
Estimated Cement Top	3390
Time Well Ready	//
Time Logger on Bottom	//
Equipment Number	P128
Revised By	BOB KILS
Witnessed By	SCOTT COPSAUR
Run Number	213
Bit	213
From	228
To	4413
Size	2 1/2
Weight	10
Tubing Record	From: To
Cement Record	Size: 8 5/8
Pack String	00
Production String	5 1/2
Well	WFFI
Top	00
Bottom	223
	4412

<<< Fold Here >>>

All interpretations are opinions based on inferences from electrical or other measurements and we cannot and do not guarantee the accuracy or correctness of any interpretation, and we shall not, except in the case of gross or willful negligence on our part, be liable or responsible for any loss, costs, damages, or expenses incurred or sustained by anyone resulting from any interpretation made by any of our officers, agents or employees. These interpretations are also subject to our general terms and conditions set out in our current Price Schedule.

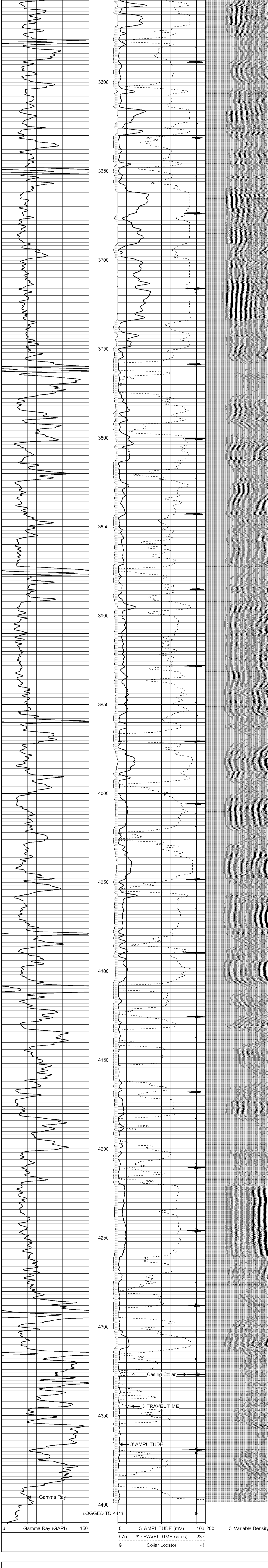
Comments

THANK YOU FOR USING
PERF-TECH WIRELINE SERVICES, INC.
785-628-3969

DIRECTIONS: HWY 96 & GG Rd.
3 SOUTH to 100 Rd.,
1 WEST to FF Rd.
1 SOUTH, 1/4 WEST,
SOUTH into

MAIN PASS

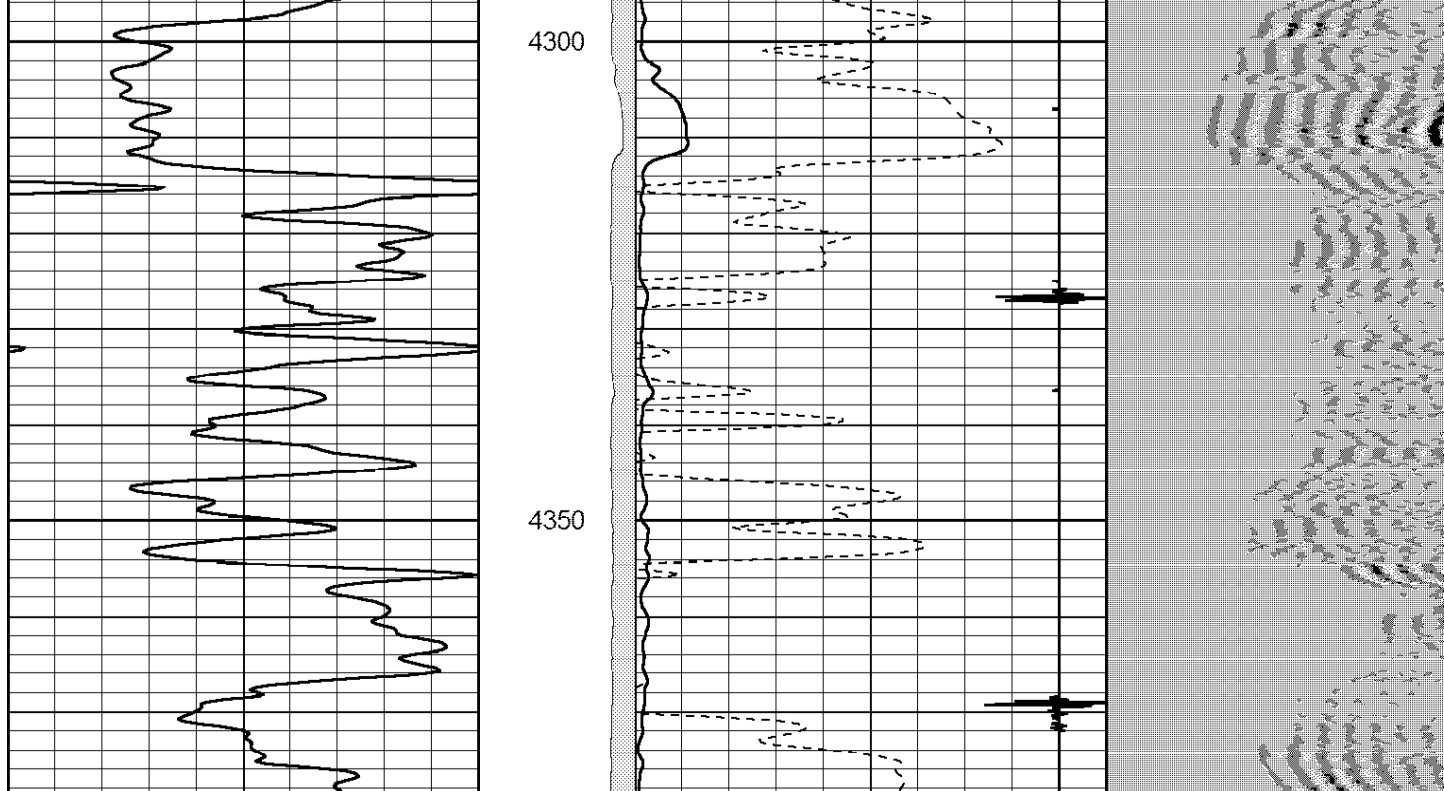
Database File: sept251306a.db
Dataset Pathname: pass4
Presentation Format: 3x5
Dataset Creation: Wed Sep 25 14:30:43 2013 by Log SCH 111116
Charted by: Depth in Feet scaled 1.240



0 3' AMPLITUDE (mV) 100 200 5' Variable Density 1100
575 3' TRAVEL TIME (usec) 235
9 Collar Locator -1

REPEAT SECTION

Database File: sept251306a.db
Dataset Pathname: pass3
Presentation Format: 3x5
Dataset Creation: Wed Sep 25 14:26:54 2013 by Log SCH 111116
Charted by: Depth in Feet scaled 1.240



0 3' AMPLITUDE (mV) 100 200 5' Variable Density 1100
575 3' TRAVEL TIME (usec) 235
9 Collar Locator -1