

Company: AMERICAN WARRIOR, INC.
Well: FELDER #2-13
County: BERNICE
Field: FELDER #2-13
Company: AMERICAN WARRIOR, INC.
Well: FELDER #2-13

Location: 3357 FSL & 2310 FEL
County: NESS
State: KANSAS
SEC 13 TWP 20S RGE 21W
Ground Level Elevation: 2229
Permanet Datum: GROUND LEVEL
Log Measured From: KELLY BUSHING & AGL
Elevation: K.F. 2235
Q.L. 2229
Drilling Measured From: AUGUST 28, 2013
Date: OME
Run Number: 4396
Depth Logged: 4396
Bottom Logged / Interval: 4396
Open Hole Size: 3150

Time With Ready: 3:50
Estimated Cement Top: 3:50
Max Recorded Temp: 77.5
Depth / Visibly: 9
Water: WATER

PT-08
HAYS
JEREMY SCHNEIDER
MRS SCOTT CONSAIR
Recorded By: JEREMY SCHNEIDER
Witnessed By: MRS SCOTT CONSAIR
Run Number: 12 25
Bill: 00
TWC: 7 875
Size: 222
4397
Weight: 222
4397
From: 00
To: 10
Gamma Record: 00
VAGRT: 298
Top: 00
Bottom: 4396
Source String: 8 58
Size: 5 12
15.5#
00
4396
Production String: 5 12
15.5#
00
4396
Liner: 5 12
15.5#
00
4396

<<< Fold Here >>>

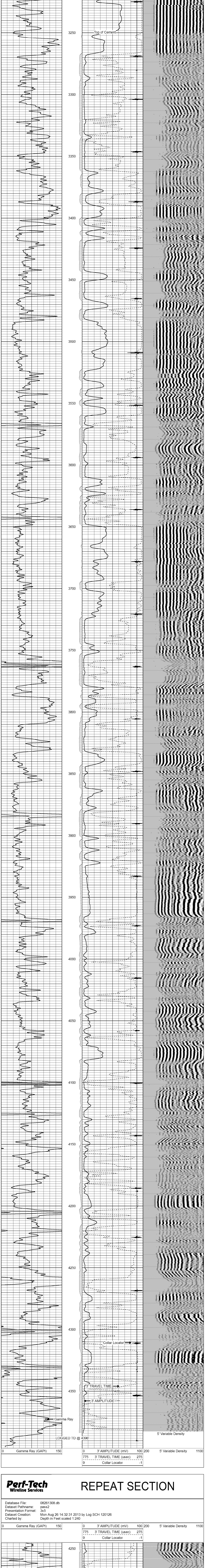
All interpretations are opinions based on inferences from electrical or other measurements and we cannot and do not guarantee the accuracy or correctness of any interpretation, and we shall not, except in the case of gross or willful negligence on the part, be liable or responsible for any loss, costs, damages, or expenses incurred or sustained by anyone resulting from any interpretation made by any of our officers, agents or employees. These interpretations are also subject to our general terms and conditions set out in our current Price Schedule.

Comments

THANKS FOR USING PERF-TECH WIRELINE
785-623-3969
ALEXANDER KS,
BLACKTOP 12 SOUTH TO "W" RD,
2 1/4 WEST, NORTH INTO

Perf-Tech Wireline Services **MAIN PASS**

Database File: 08261308.db
Dataset Pathname: pass3
Presentation Format: 3x5
Dataset Creation: Mon Aug 26 14:38:06 2013 by Log SCH 120126
Charted by: Depth in Feet scaled 1.240



Perf-Tech Wireline Services **REPEAT SECTION**

Database File: 08261308.db
Dataset Pathname: pass2
Presentation Format: 3x5
Dataset Creation: Mon Aug 26 14:32:31 2013 by Log SCH 120126
Charted by: Depth in Feet scaled 1.240

