



GAMMA RAY
CEMENT BOND
COMPLETION LOG

POSTROCK ENERGY CORP.
WILSON

Company: POSTROCK ENERGY CORP.
Well: EB#4-16
Field: CHEROKEE BASIN CBM
County: WILSON
State: KANSAS

Location: 1780 FSL / 1100 FEL
AP# #: 15-205-28168-00-00
Chart Station: OPEN HOLE
6-11-2013

Date: 6-17-2013
Run Number: 1 NW
Depth (m): 1327
Depth (ft): 1397.7

Company: POSTROCK ENERGY CORP.
Well: EB#4-16
Field: CHEROKEE BASIN CBM
County: WILSON
State: KANSAS

Location: 1780 FSL / 1100 FEL
AP# #: 15-205-28168-00-00
Chart Station: OPEN HOLE
6-11-2013

Date: 6-17-2013
Run Number: 1 NW
Depth (m): 1327
Depth (ft): 1397.7

Company: POSTROCK ENERGY CORP.
Well: EB#4-16
Field: CHEROKEE BASIN CBM
County: WILSON
State: KANSAS

Location: 1780 FSL / 1100 FEL
AP# #: 15-205-28168-00-00
Chart Station: OPEN HOLE
6-11-2013

Date: 6-17-2013
Run Number: 1 NW
Depth (m): 1327
Depth (ft): 1397.7

<<< Fold Here >>>

All interpretations are opinions based on inferences from electrical or other measurements and we cannot and do not guarantee the accuracy or correctness of any interpretation, and we shall not, except in the case of gross or willful negligence on our part, be liable or responsible for any loss, costs, damages, or expenses incurred or sustained by anyone resulting from any interpretation made by any of our officers, agents or employees. These interpretations are also subject to our general terms and conditions set out in our current Price Schedule.

Comments

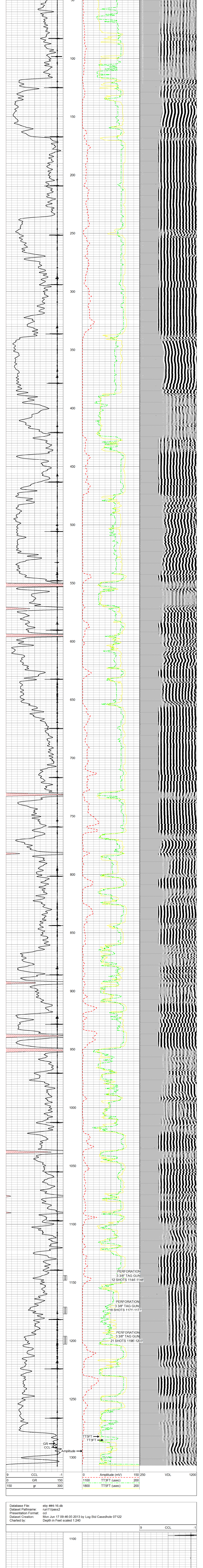
THANK YOU

Sensor	Offset (ft)	Schematic	Description	Len (ft)	OD (in)	Wt (lb)
WVFCAL	2.17			2.17	1.69	5.00
WVFSYNC	2.17			2.17	1.69	5.00
WVFSFT	5.58			9.75	1.69	50.00
WVFS3FT	6.58			9.75	1.69	50.00

Dataset: eby ##4-16.db: field/well/run1/pass2MERGE
Total Length: 14.08 ft
Total Weight: 60.00 lb
O.D.: 1.69 in

Database File: eby ##4-16.db
Dataset Pathname: pass2MERGE
Presentation Format: scbl_gr
Dataset Creation: Mon Jun 17 08:56:37 2013
Charted by:

9	CCL	-1	0	Amplitude (mV)	150	250	VDL	1200
0	GR	150	1100	TT3FT (usec)	200			
150	gr	300	1800	TT5FT (usec)	200			



Database File: eby ##4-16.db
Dataset Pathname: run11/pass2
Presentation Format: ccl
Dataset Creation: Mon Jun 17 09:46:05 2013 by Log Std Casedhole 07122
Charted by:

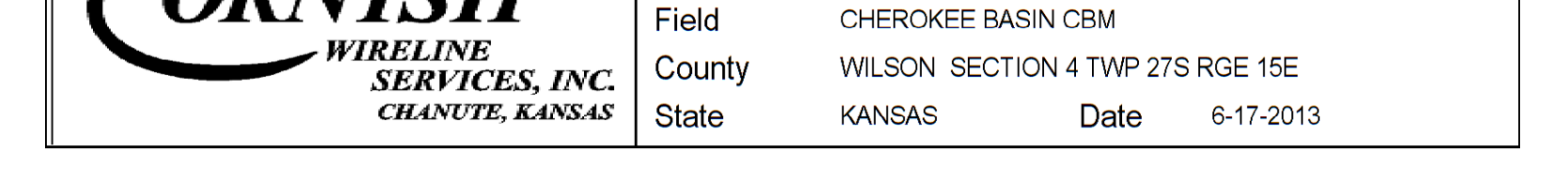
9	CCL	-1	1100					
			1150					
			1200					

NEW PERFS

NEW PERFS

NEW PERFS

9 CCL -1



Company: POSTROCK ENERGY CORP.
Well: EB#4-16
Field: CHEROKEE BASIN CBM
County: WILSON SECTION 4 TWP 27S RGE 15E
State: KANSAS
Date: 6-17-2013