



**GAMMA RAY  
CEMENT BOND  
COMPLETION LOG**

Company	POSTROCK ENERGY CORP.	Well	GROSDIDIER, FRANCIS E. #14-6
Field	CHEROKEE BASIN CBM	County	NEOSHO
State	KANSAS	Location:	2445' FSL & 1170' FWL NE NE NW SW SEC 14 TWP 28S RGE 20E
Company	POSTROCK ENERGY CORP.	Well	GROSDIDIER, FRANCIS E. #14-6
Field	CHEROKEE BASIN CBM	County	NEOSHO
State	KANSAS	Location:	2445' FSL & 1170' FWL NE NE NW SW SEC 14 TWP 28S RGE 20E
API #	15-133-27682-00-00	Other Services	OPEN HOLE 7-03-2013
Permanant Datum	GL	Elevation	921'
Log Measured From	GL	K.B. D.F.	GL 921'
Drilling Measured From	GL		
Date	7-09-2013		
Run Number	1 NW		
Depth Driller	631'		
Depth Logger	624.6'		
Top Log Interval	0		
Bottom Logged Interval	619.6'		
Fluid Level	FULL		
Type Fluid	WATER		
Production Casing	5" @ TD		
Max. Recorded Temp.			
Estimated Cement Top			
Calculated Cement Top			
Amount & Type Cement			
Dilling Contractor			
Equipment Number	105		
Location	GORMLEY, R		
Recorded By	HAYS, R		
Witnessed By			

<<< Fold Here >>>

All interpretations are opinions based on inferences from electrical or other measurements and we cannot and do not guarantee the accuracy or correctness of any interpretation, and we shall not, except in the case of gross or willful negligence on our part, be liable or responsible for any loss, costs, damages, or expenses incurred or sustained by anyone resulting from any interpretation made by any of our officers, agents or employees. These interpretations are also subject to our general terms and conditions set out in our current Price Schedule.

Comments

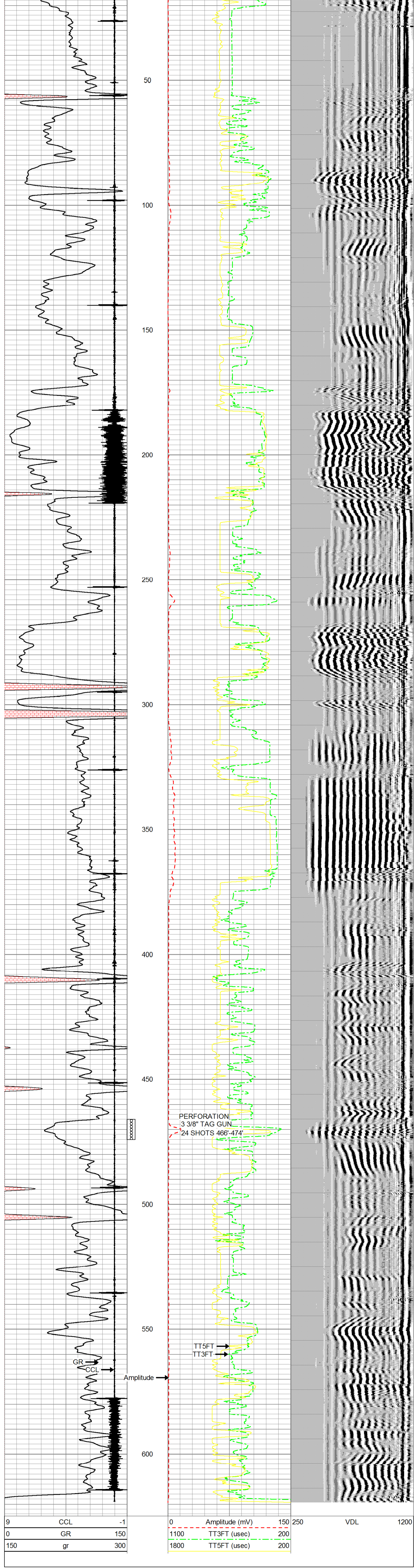
THANK YOU

Sensor	Offset (ft)	Schematic	Description	Len (ft)	OD (in)	Wt (lb)
			tekco tekco cent.	2.17	1.69	5.00
WVF3FT	6.58		CBLTEKCO-TEKCO2RCVR (TEKCO169) 1 11/16" TEKCO 2 RCVR DELWARE	9.75	1.69	50.00
WVF5FT	5.58					
WVFCAL	2.17					
WVFSYNC	2.17					
			tekco tekco cent.	2.17	1.69	5.00

Dataset: grosdidier francis e #14-6.db: field/well/run1/pass2MERGE  
 Total Length: 14.08 ft  
 Total Weight: 60.00 lb  
 O.D.: 1.69 in

Database File: grosdidier francis e #14-6.db  
 Dataset Pathname: pass2MERGE  
 Presentation Format: scl\_dr  
 Dataset Creation: Tue Jul 09 09:27:26 2013  
 Charted by: Depth in Feet scaled 1:240

9	CCL	-1	0	Amplitude (mV)	150	250	VDL	1200
0	GR	150	1100	TT3FT (usec)	200			
150	gr	300	1800	TT5FT (usec)	200			



Database File: grosdidier francis e #14-6.db  
 Dataset Pathname: run11/pass2  
 Presentation Format: ccl  
 Dataset Creation: Tue Jul 09 09:48:22 2013 by Log Std Casedhole 07122  
 Charted by: Depth in Feet scaled 1:240

