



Pioneer Energy Services

## Dual Compensated Porosity Log

15-009-25,900-00-00

API No.

Company **K & N Petroleum, Inc.**  
 Well **Panning #6**  
 Field **Eberhardt**  
 County **Barton** State **Kansas**

Location  
**1950' FNL & 330' FEL**  
 Sec: **23** Twp: **19S** Rge: **11W**

Other Services  
 DIL  
 MEL

Permanent Datum Ground Level Elevation **1774**  
 Log Measured From Kelly Bushing **8** Ft. Above Perm. Datum  
 Drilling Measured From Kelly Bushing

Elevation  
 K.B. **1782**  
 D.F. **1774**  
 G.L. **1774**

Date	12/1/2013
Run Number	One
Type Log	CNL / CDL
Depth Driller	3425
Depth Logger	3426
Bottom Logged Interval	3405
Top Logged Interval	2800
Type Fluid In Hole	Chemical
Salinity, PPM CL	12,000
Density	9.0
Level	Full
Max. Rec. Temp. F	110
Operating Rig Time	3Hours
Equipment -- Location	17 Hays
Recorded By	C. Desaire
Witnessed By	Jim Musgrove

Borehole Record		Casing Record	
Run No.	Bit From To	Size	Wgt. From To
1	12.25 00	8.625	24# 00
2	7.875 382	3425	382

<<< Fold Here >>>

All interpretations are opinions based on inferences from electrical or other measurements and we cannot and do not guarantee the accuracy or correctness of any interpretation, and we shall not, except in the case of gross or willful negligence on our part, be liable or responsible for any loss, costs, damages, or expenses incurred or sustained by anyone resulting from any interpretation made by any of our officers, agents or employees. These interpretations are also subject to our general terms and conditions set out in our current Price Schedule.

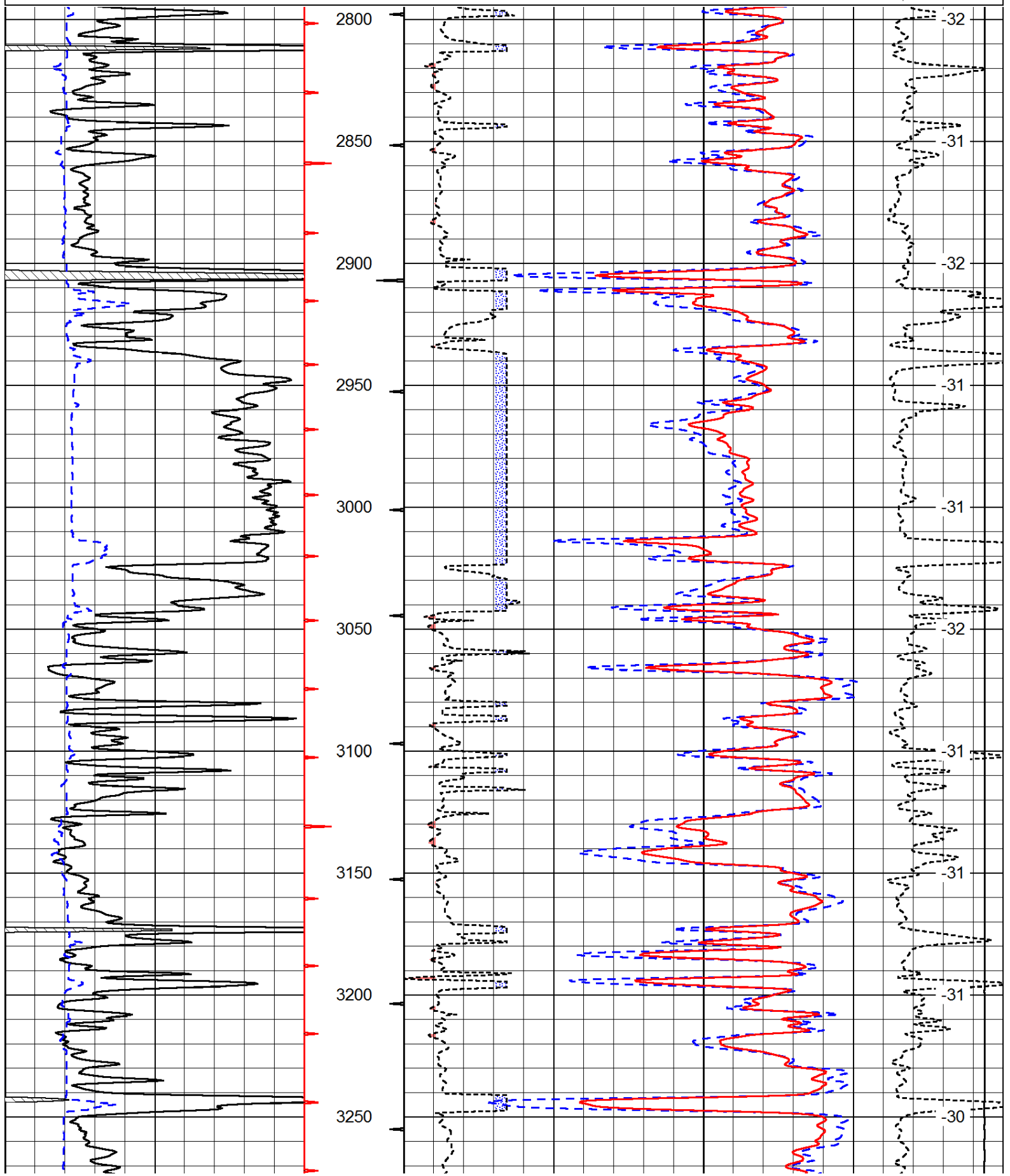
### Comments

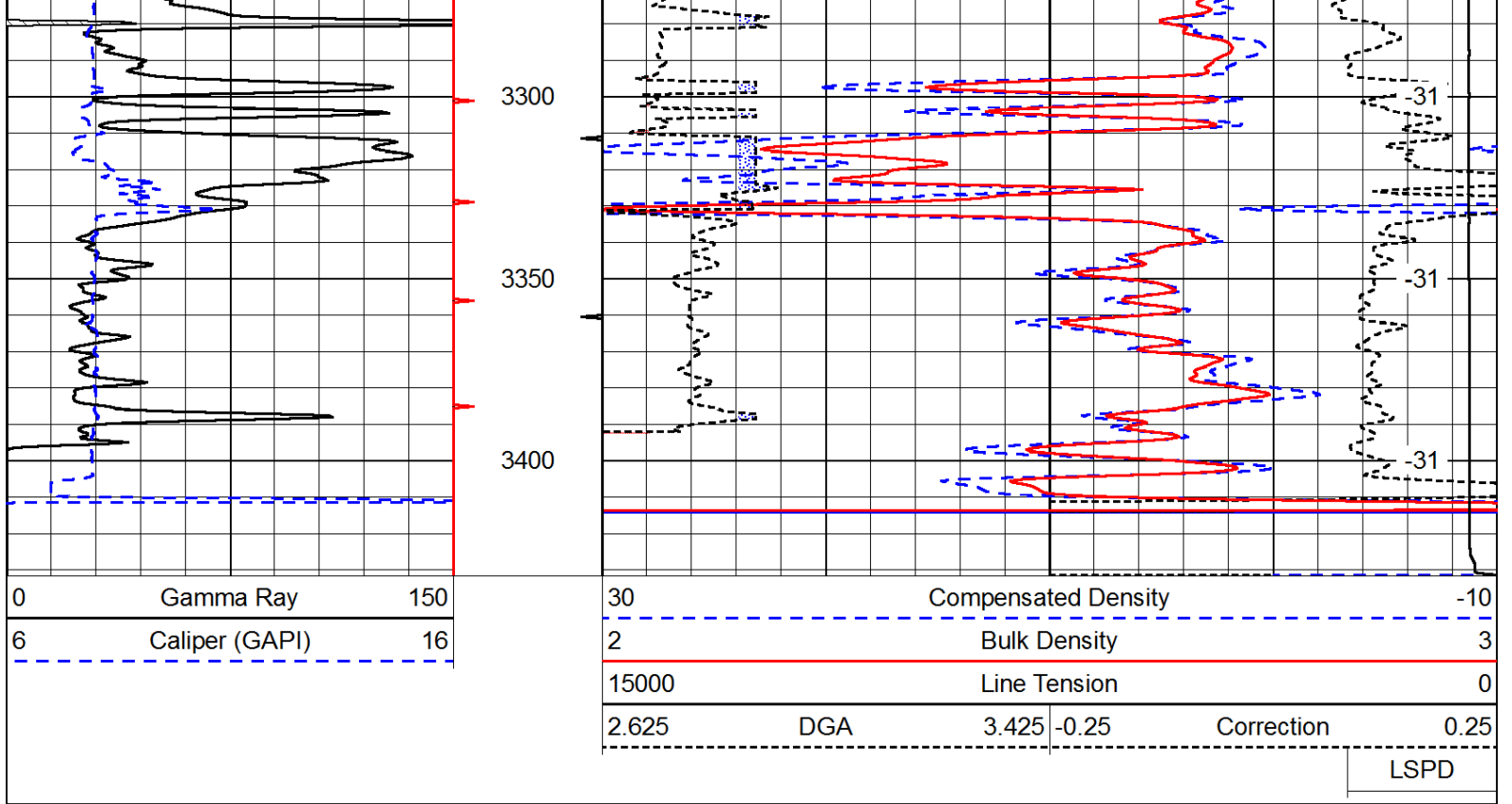
Thank you for using Pioneer Energy Services  
[www.pioneerenergy.com](http://www.pioneerenergy.com)  
 785 625 3858  
 Ellinwood KS, 1 1/2 N,  
 4 E, 1/2 N, W Into

Database File: c:\warrior\data\k & n petroleum\_panning #6\knhd.db  
 Dataset Pathname: dil/knstk  
 Presentation Format: cdl  
 Dataset Creation: Sun Dec 01 20:25:57 2013  
 Charted by: Depth in Feet scaled 1:600

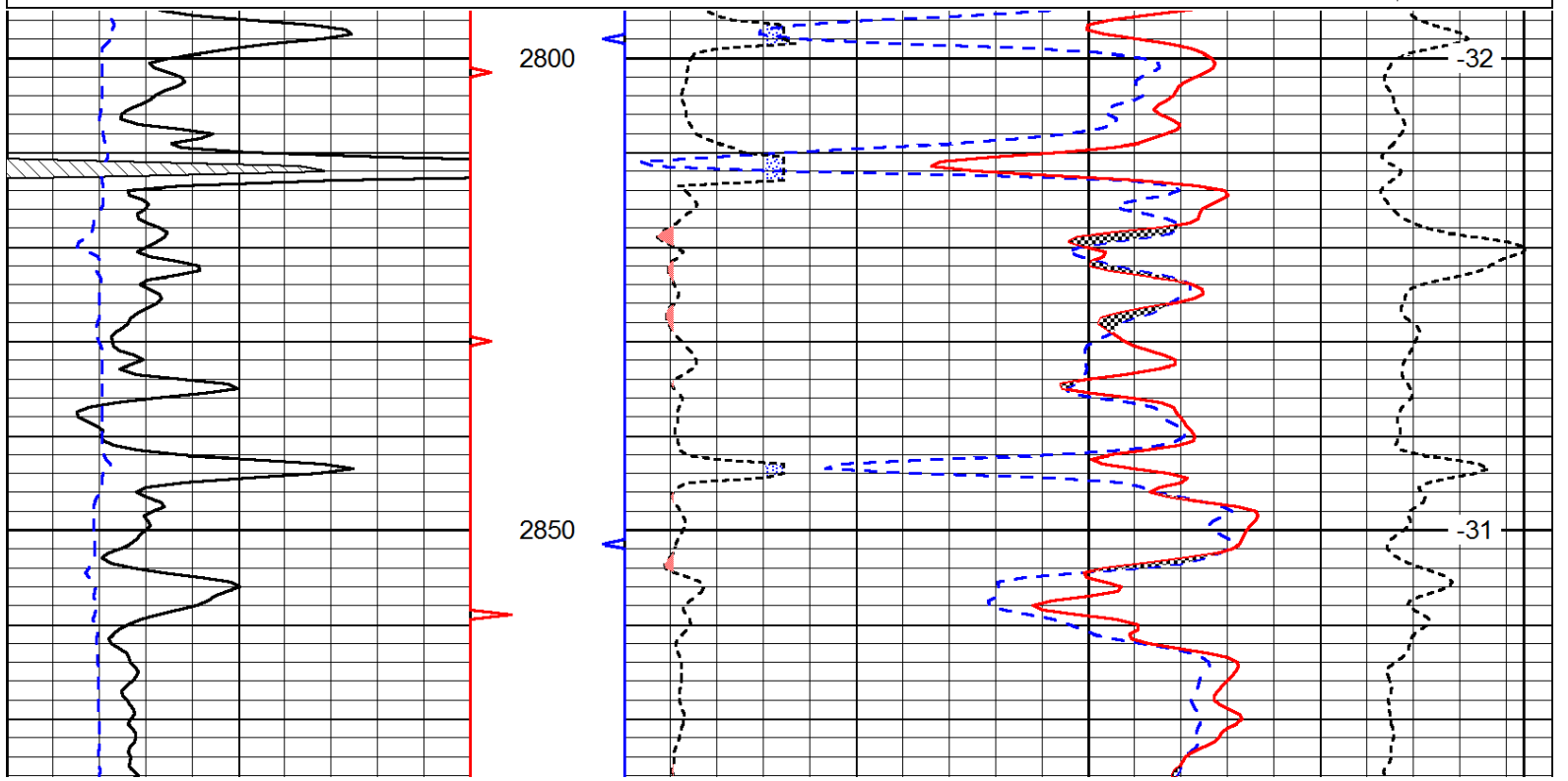
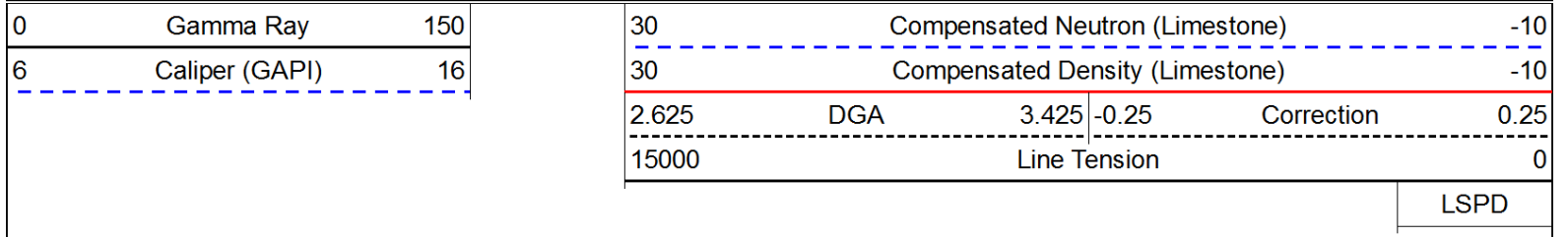
0	Gamma Ray	150
6	Caliper (GAPI)	16

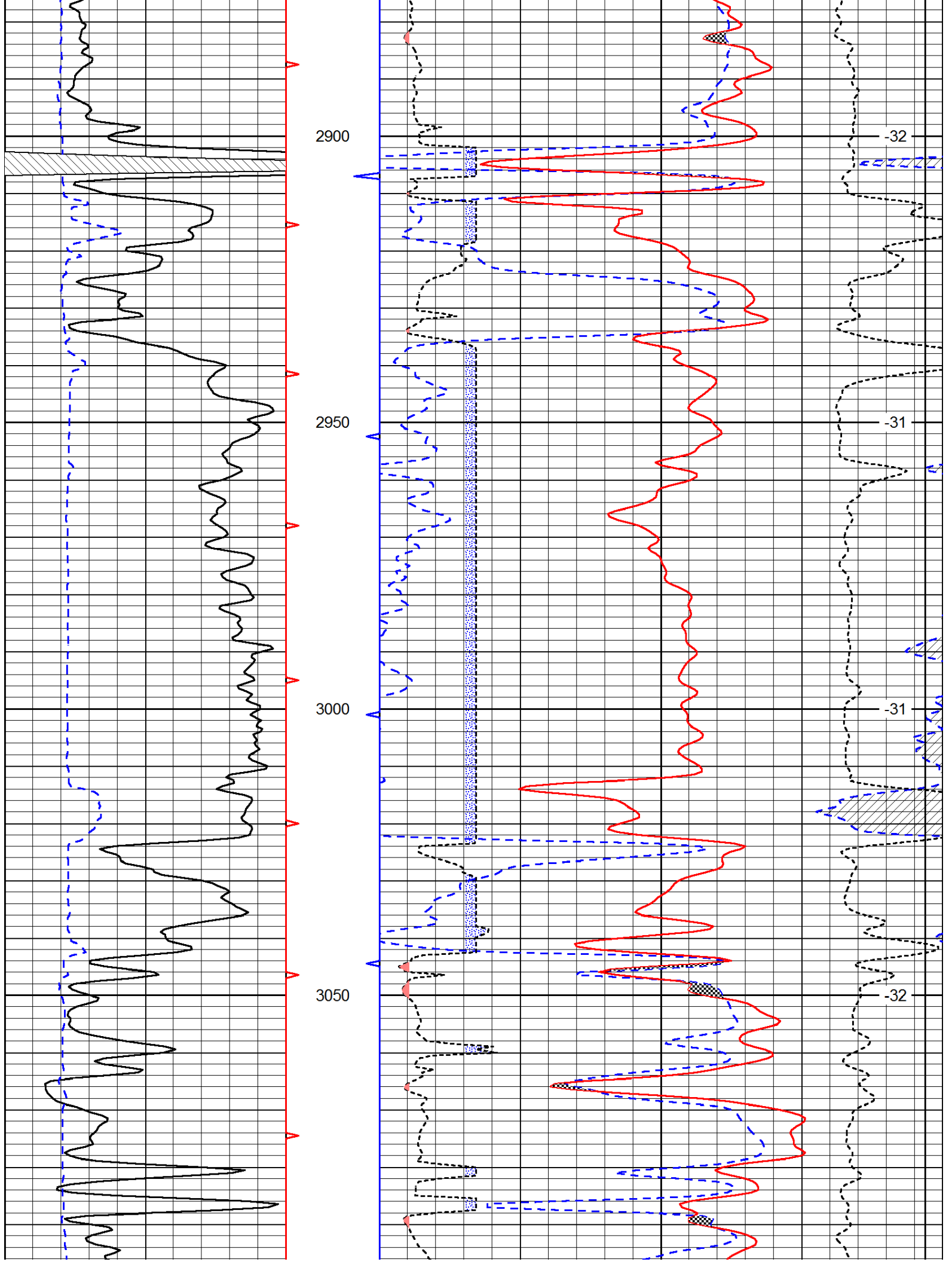
30	Compensated Density		-10
2	Bulk Density		3
15000	Line Tension		0
2.625	DGA	3.425	-0.25
			Correction
			LSPD

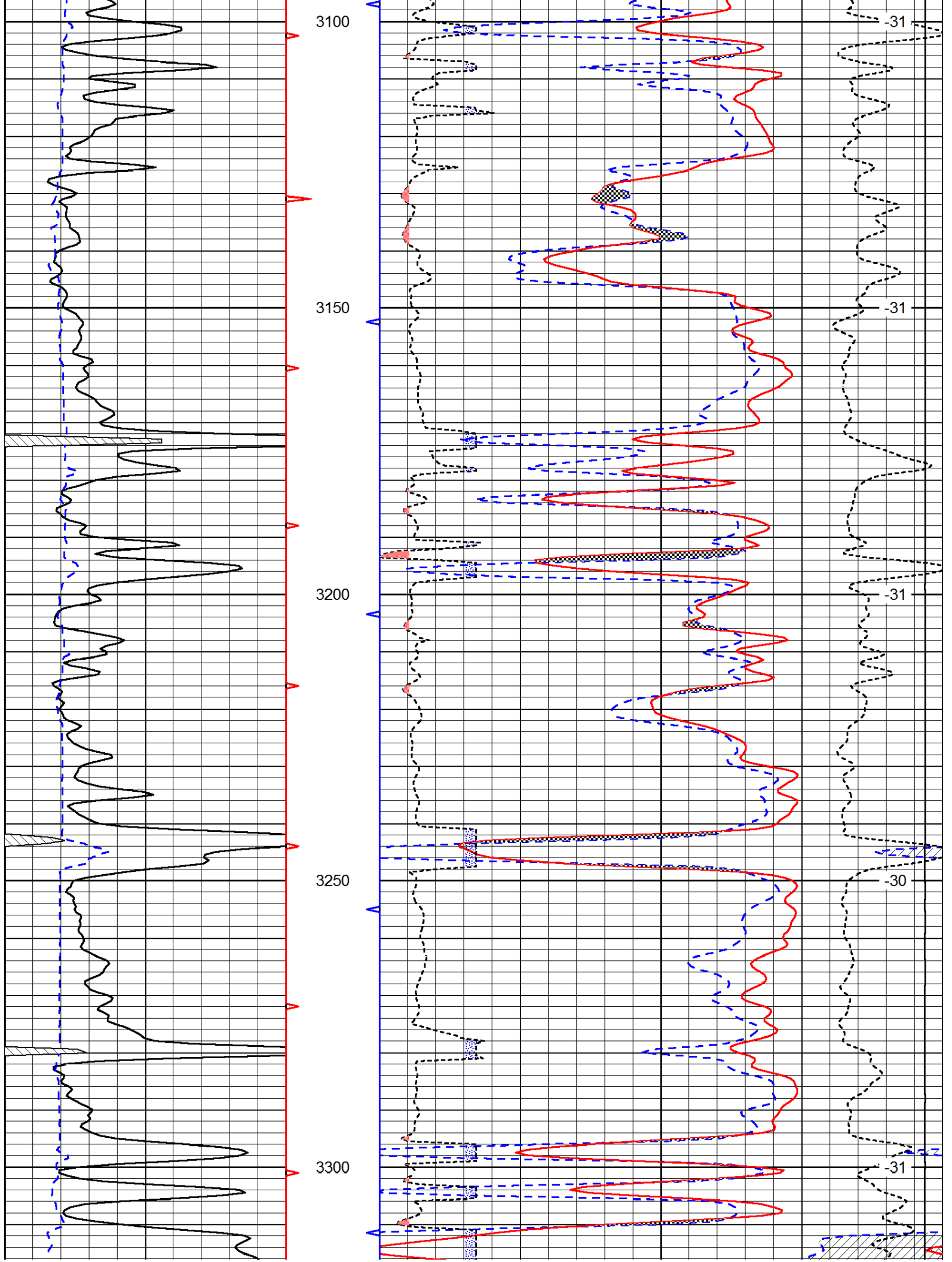


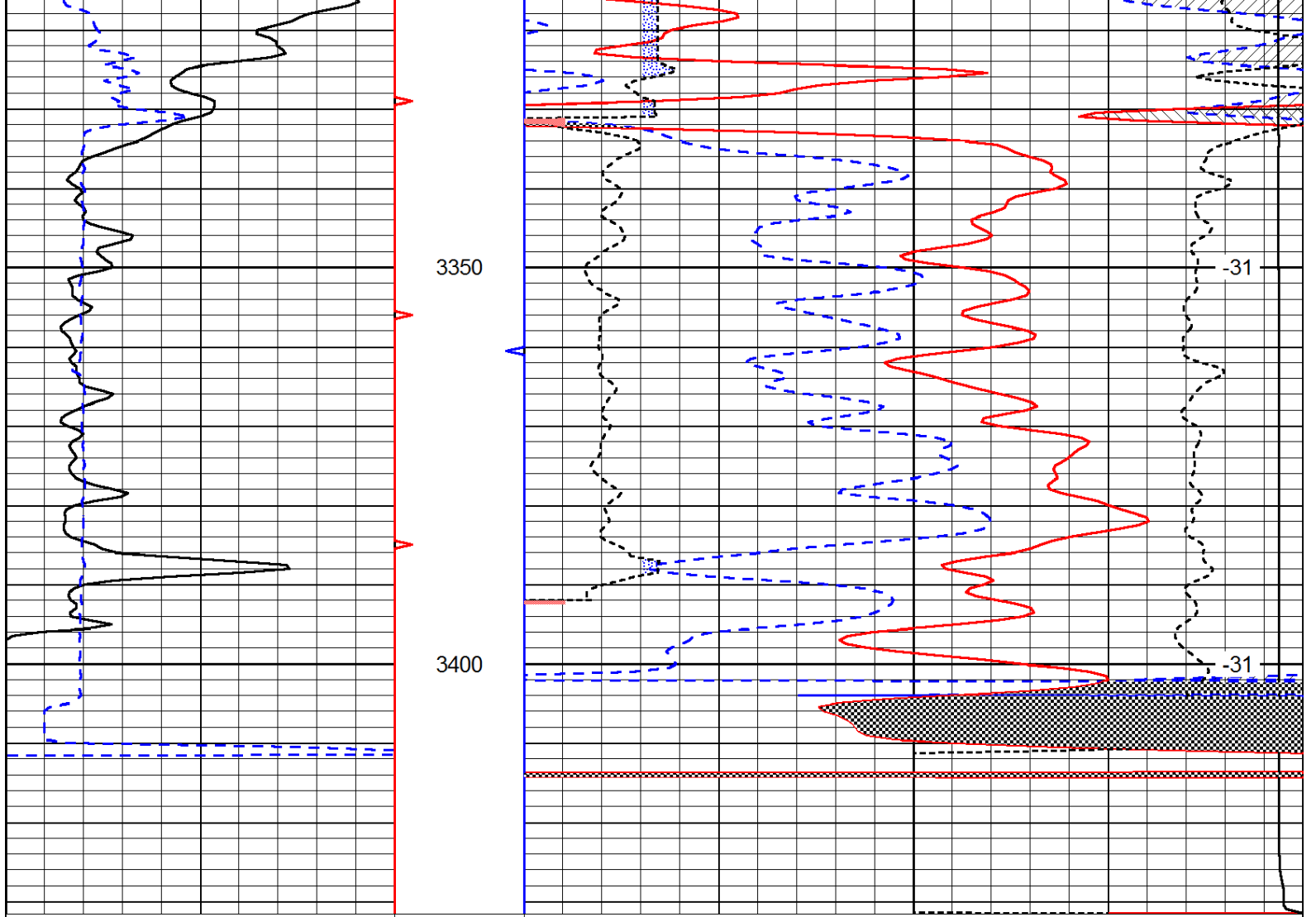


Database File: c:\warrior\data\k & n petroleum\_panning #6\knhd.db  
 Dataset Pathname: dil/knstk  
 Presentation Format: cndlspec  
 Dataset Creation: Sun Dec 01 20:25:57 2013  
 Charted by: Depth in Feet scaled 1:240









0	Gamma Ray	150
6	Caliper (GAPI)	16

30	Compensated Neutron (Limestone)	-10			
30	Compensated Density (Limestone)	-10			
2.625	DGA	3.425	-0.25	Correction	0.25
15000	Line Tension			0	

LSPD