



Pioneer Energy Services

# Microresistivity Log

15-009-25,900-00-00

API No.

Company **K & N Petroleum, Inc.**

Well **Panning #6**

Field **Eberhardt**

County **Barton** State

**Kansas**

Location **1950' FNL & 330' FEL**

Other Services  
CNL/CDL  
DIL

Sec: **23** Twp: **19S** Rge: **11W**

Permanent Datum **Ground Level** Elevation **1774**  
 Log Measured From **Kelly Bushing** **8** Ft. Above Perm. Datum  
 Drilling Measured From **Kelly Bushing**

Elevation  
K.B. 1782  
D.F. 1774  
G.L. 1774

Date	12/1/2013	
Run Number	Two	
Depth Driller	3425	
Depth Logger	3426	
Bottom Logged Interval	3425	
Top Log Interval	2800	
Casing Driller	8.625 @ 382	
Casing Logger	382	
Bit Size	7.875	
Type Fluid in Hole	Chemical	
Salinity, ppm CL	12,000	
Density / Viscosity	9.0 58	
pH / Fluid Loss	8.0 15.0	
Source of Sample	Flowline	
Rm @ Meas. Temp	.2 @ 54	
Rmf @ Meas. Temp	.15 @ 54	
Rmc @ Meas. Temp	.27 @ 54	
Source of Rmf / Rmc	Charts	
Rm @ BHT	.1 @ 110	
Operating Rig Time	3 Hours	
Max Rec. Temp. F	110	
Equipment Number	17	
Location	Hays	
Recorded By	C. Desaire	
Witnessed By	Jim Musgrove	

<<< Fold Here >>>

All interpretations are opinions based on inferences from electrical or other measurements and we cannot and do not guarantee the accuracy or correctness of any interpretation, and we shall not, except in the case of gross or willful negligence on our part, be liable or responsible for any loss, costs, damages, or expenses incurred or sustained by anyone resulting from any interpretation made by any of our officers, agents or employees. These interpretations are also subject to our general terms and conditions set out in our current Price Schedule.

### Comments

Thank you for using Pioneer Energy Services  
[www.pioneerenergy.com](http://www.pioneerenergy.com)  
 785 625 3858

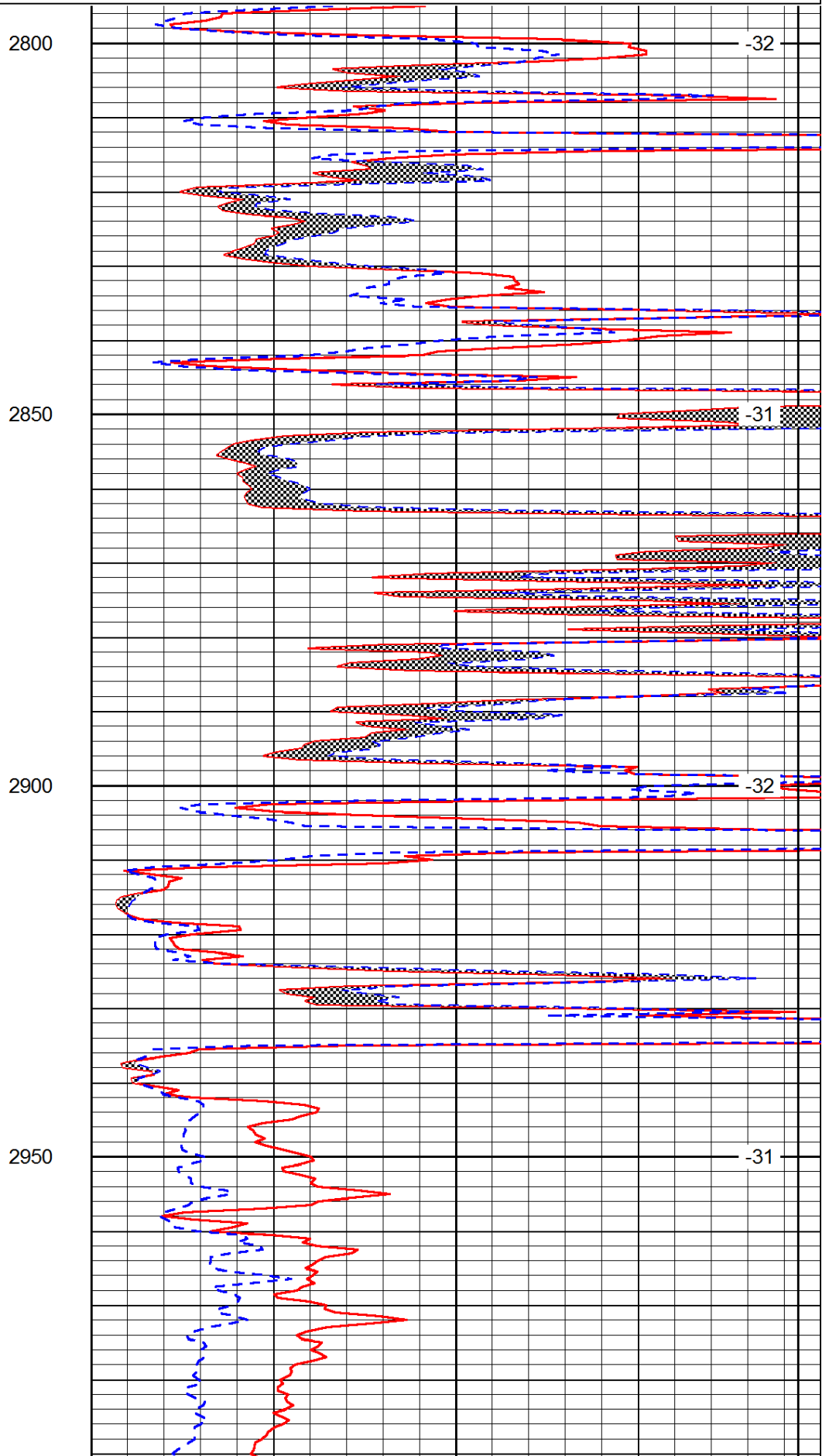
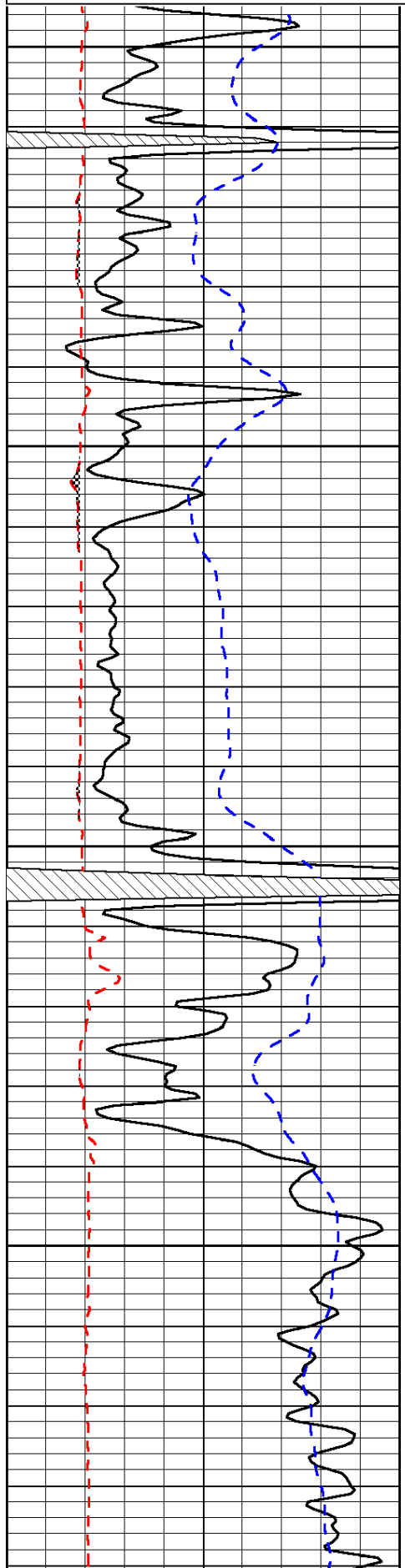
Ellinwood KS, 1 1/2 N,  
 4 E, 1/2 N, W Into

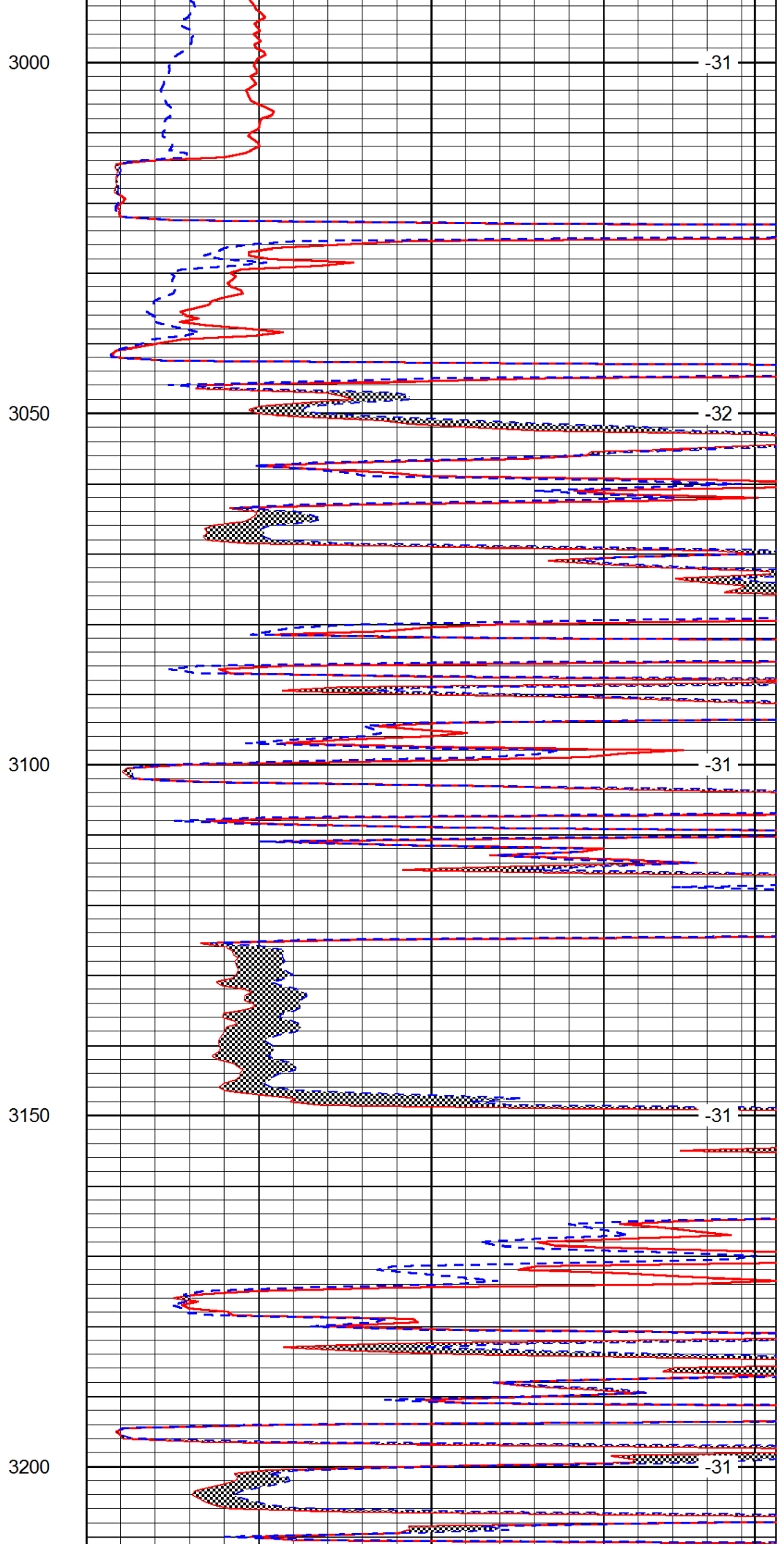
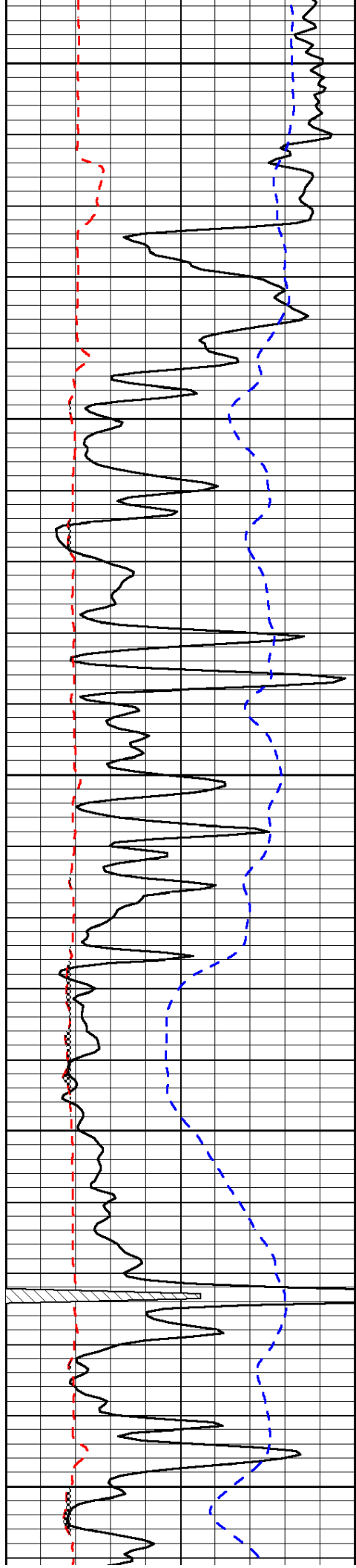
Database File: c:\warrior\data\k & n petroleum\_panning #6\knhd.db  
 Dataset Pathname: dil\knstk  
 Presentation Format: micro  
 Dataset Creation: Sun Dec 01 20:25:57 2013  
 Charted by: Depth in Feet scaled 1:240

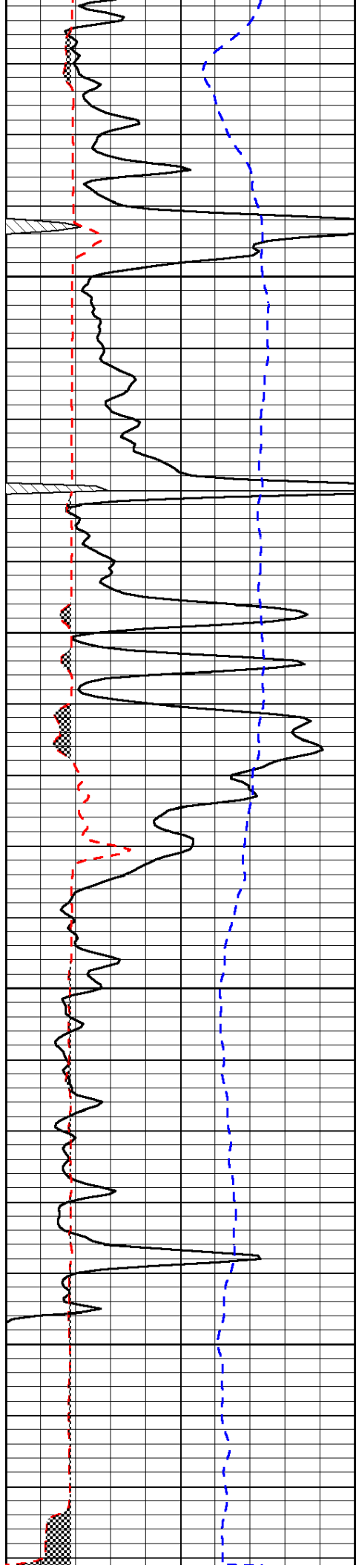
0	Gamma Ray	150
6	Micro Log Caliper (GAPI)	16
-200	SP (mV)	0

0	Micro Inverse 1 X 1	40
0	Micro Normal 2"	40
15000	Line Weight	0

LSPD





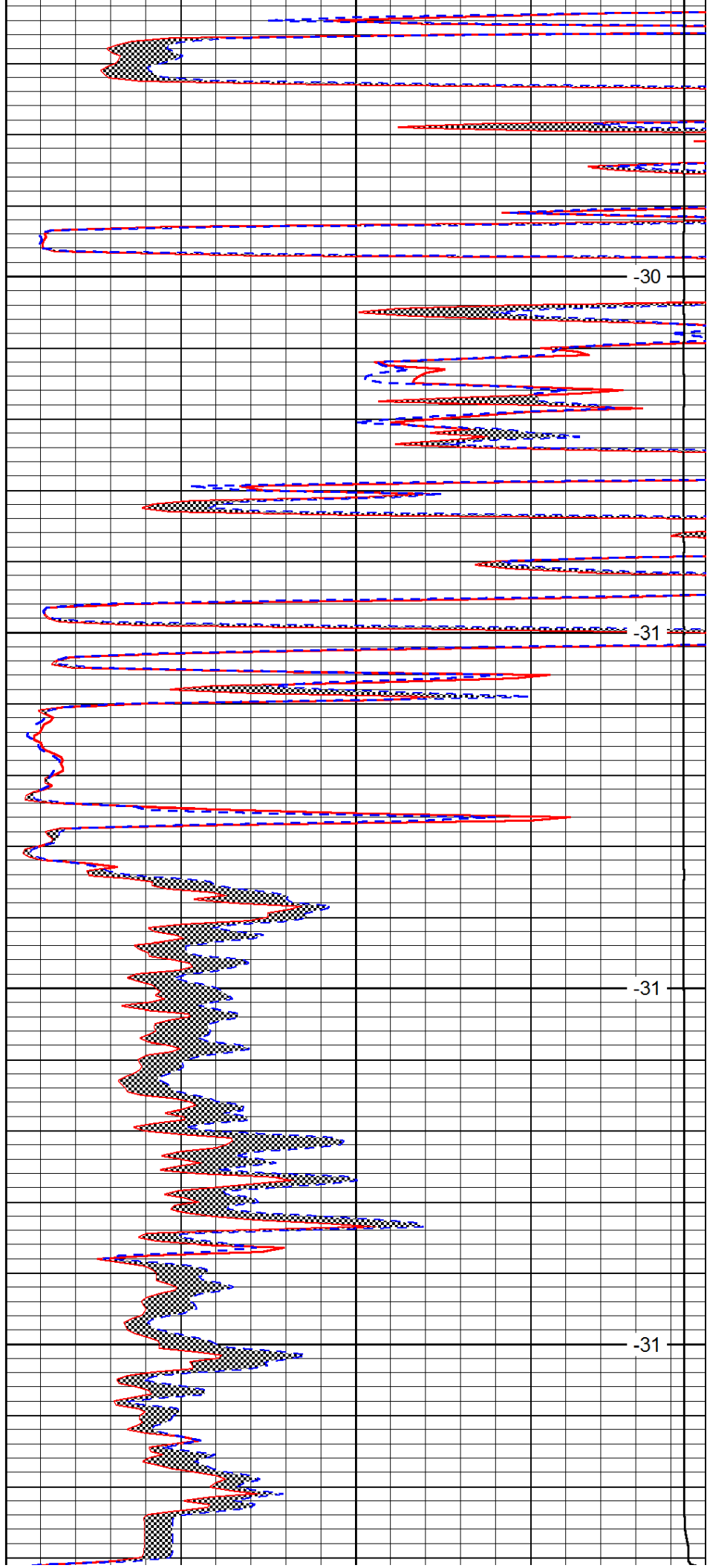


3250

3300

3350

3400



-30

-31

-31

-31

0	Gamma Ray	150
6	Micro Log Caliper (GAPI)	16
-200	SP (mV)	0

0	Micro Inverse 1 X 1	40
0	Micro Normal 2"	40
15000	Line Weight	0

LSPD