



Pioneer Energy Services

Dual Compensated Porosity Log

API No.	15-115-21450-00-00		
Company	Range Oil Company, Inc.		
Well	Rhodes A #1		
Field	Savage		
County	Marion		
Location	380' FNL & 2017' FEL		
State	Kansas		
Other Services	DIL		

Permanent Datum	Ground Level	Elevation	1290
Log Measured From	Kelly Bushing	10 Ft. Above Perm. Datum	
Drilling Measured From	Kelly Bushing		
Date	6/7/2013	Elevation	1300

Run Number	One
Type Log	CNL / CDL
Depth Driller	2410
Depth Logger	2408
Bottom Logged Interval	2387
Top Logged Interval	1300
Type Fluid In Hole	Chemical
Salinity, PPM CL	1400
Density	9.4
Level	Full
Max. Rec. Temp. F	107
Operating Rig Time	3 Hours
Equipment -- Location	91 Hays
Recorded By	D. Schmidt
Witnessed By	John Washburn

Borehole Record				Casing Record			
Run No.	Bit	From	To	Size	Wgt.	From	To
One	12.25	00	227	8.625	23#	00	227
Two	7.875	227	TD				

<<< Fold Here >>>

All interpretations are opinions based on inferences from electrical or other measurements and we cannot and do not guarantee the accuracy or correctness of any interpretation, and we shall not, except in the case of gross or willful negligence on our part, be liable or responsible for any loss, costs, damages, or expenses incurred or sustained by anyone resulting from any interpretation made by any of our officers, agents or employees. These interpretations are also subject to our general terms and conditions set out in our current Price Schedule.

Comments

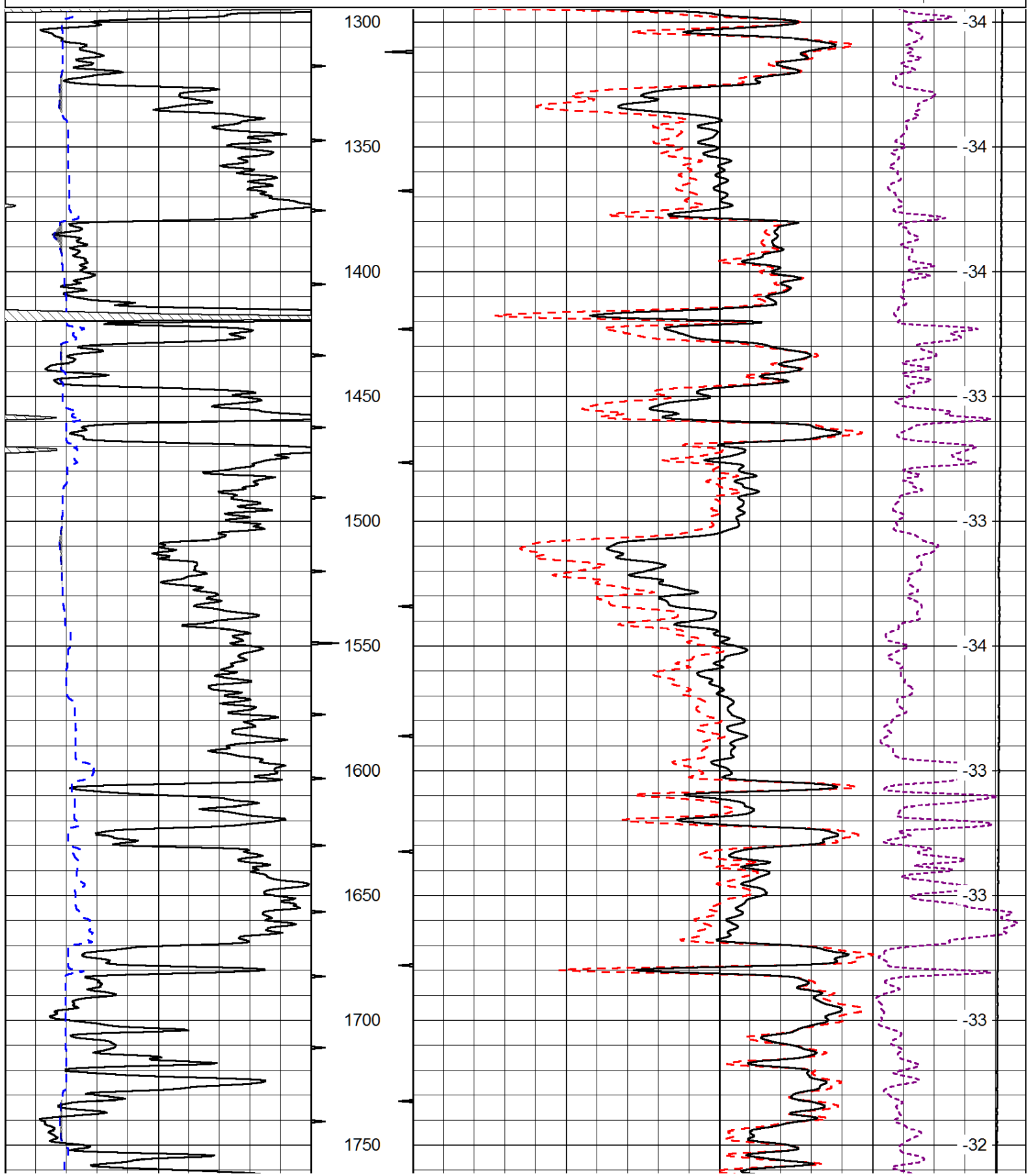
Thank you for using Log-Tech, Inc.
(785) 625-3858

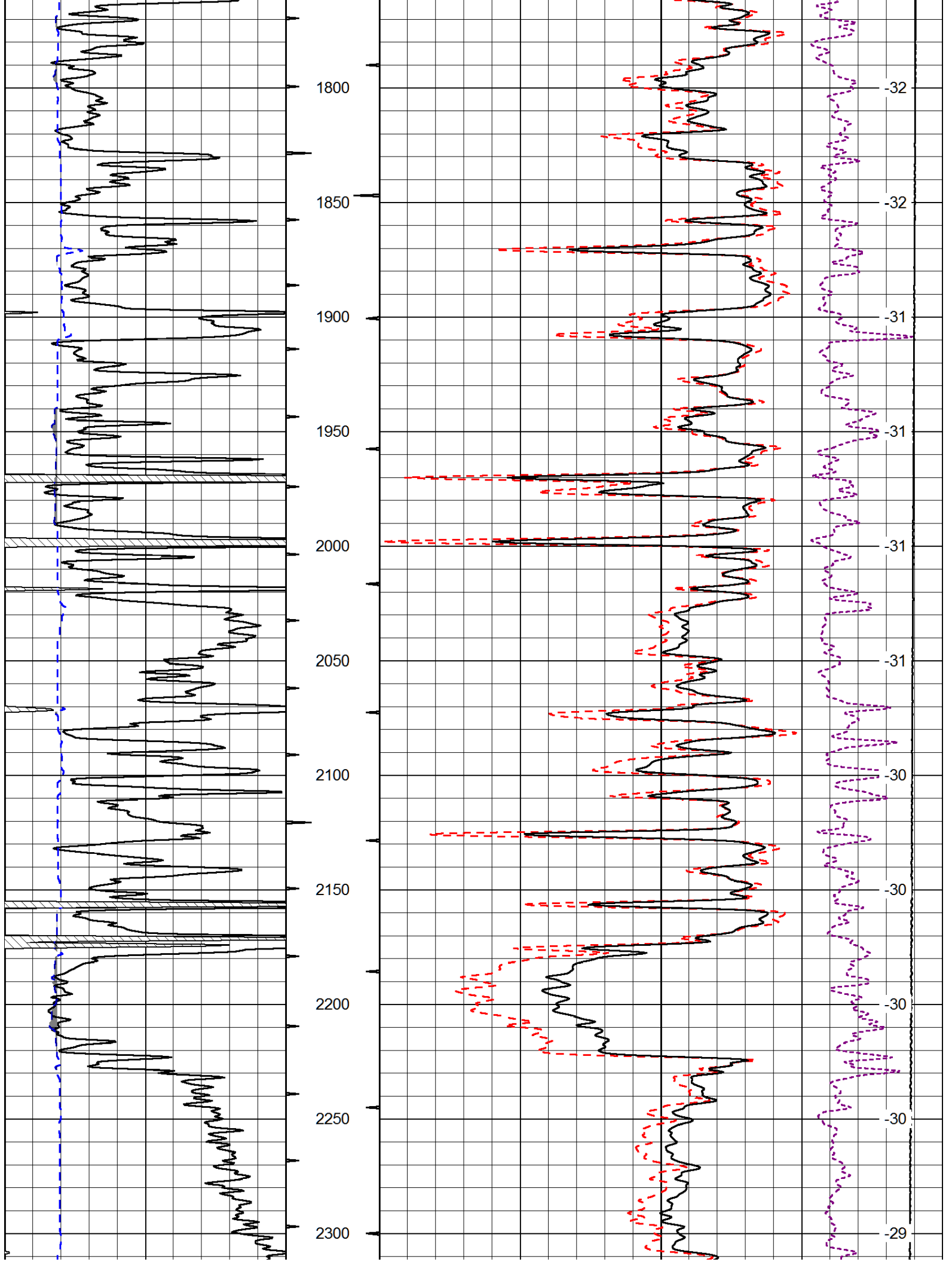
Peabody,
8 1/2 West on Hwy 50 to Rhodes Red Angus Ranch,
South and West into

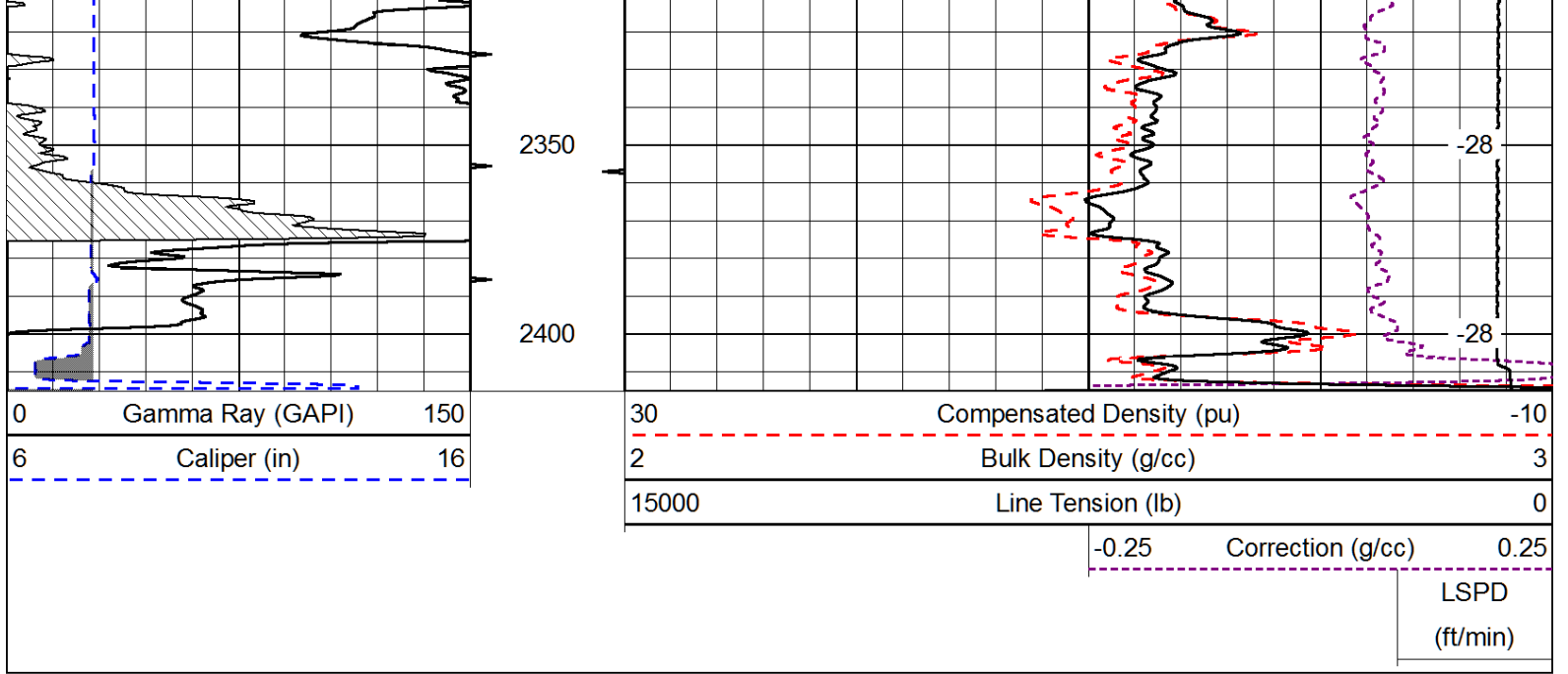
Database File: rangehd.db
 Dataset Pathname: dil/rngstk
 Presentation Format: cdl
 Dataset Creation: Fri Jun 07 20:50:53 2013
 Charted by: Depth in Feet scaled 1:600

0	Gamma Ray (GAPI)	150
6	Caliper (in)	16

30	Compensated Density (pu)	-10
2	Bulk Density (g/cc)	3
15000	Line Tension (lb)	0
-0.25	Correction (g/cc)	0.25
		LSPD (ft/min)







Database File: rangehd.db
 Dataset Pathname: dil/rngstk
 Presentation Format: cndlspec
 Dataset Creation: Fri Jun 07 20:50:53 2013
 Charted by: Depth in Feet scaled 1:240

