



Pioneer Energy Services

Dual Induction Log

15-193-20,887-00-00

API No.

Company Brito Oil Company, Inc.

Well Johnson-Robben Unit #1-2

Field Wildcat

County Thomas State

Kansas

Location 1,950' FNL & 880' FEL
(SE NW SE NE)

Sec: 2 Twp: 10S Rge: 32W

Other Services
CNL/CDL
MEL

Permanent Datum Ground Level Elevation 3075
Log Measured From Kelly Bushing 5 Ft. Above Perm. Datum
Drilling Measured From Kelly Bushing

Date 5/18/2013

Run Number One

Depth Driller 4760

Depth Logger 4760

Bottom Logged Interval 4759

Top Log Interval 250

Casing Driller 8.625 @ 258

Casing Logger 257

Bit Size 7.875

Type Fluid in Hole Chemical

Salinity, ppm CL 2600

Density / Viscosity 9.2 51

pH / Fluid Loss 10.5 7.2

Source of Sample Flowline

Rm @ Meas. Temp .65 @ 76

Rmf @ Meas. Temp .49 @ 76

Rmc @ Meas. Temp .88 @ 76

Source of Rmf / Rmc Charts

Rm @ BHT .40 @ 124

Operating Rig Time 4 Hours

Max Rec. Temp. F 124

Equipment Number 108

Location Hays

Recorded By J. Long

Witnessed By Derek Patterson

<<< Fold Here >>>

All interpretations are opinions based on inferences from electrical or other measurements and we cannot and do not guarantee the accuracy or correctness of any interpretation, and we shall not, except in the case of gross or willful negligence on our part, be liable or responsible for any loss, costs, damages, or expenses incurred or sustained by anyone resulting from any interpretation made by any of our officers, agents or employees. These interpretations are also subject to our general terms and conditions set out in our current Price Schedule.

Comments

Thank you for using Pioneer Energy Services
www.pioneerenergy.com
785 625 3858

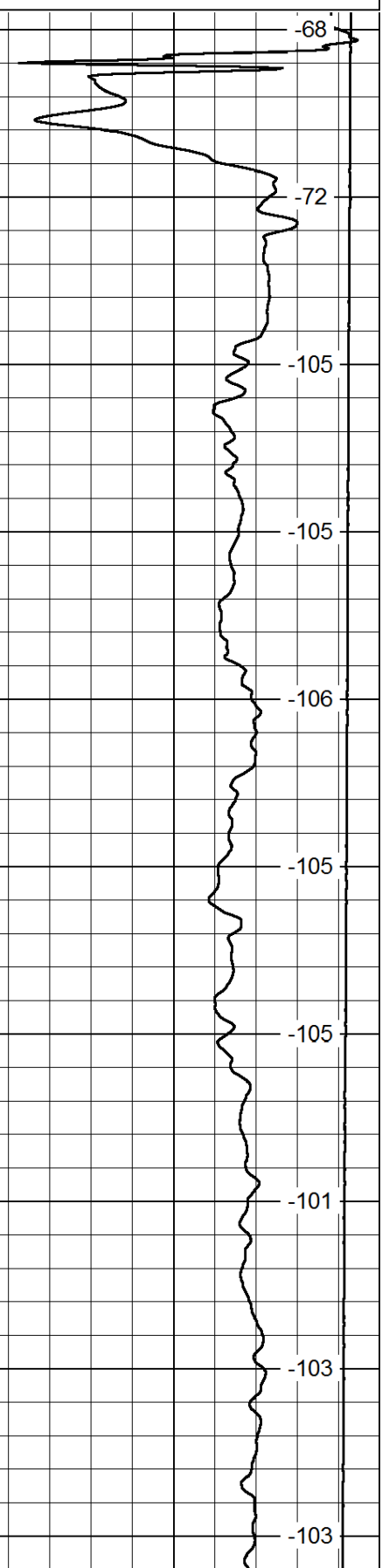
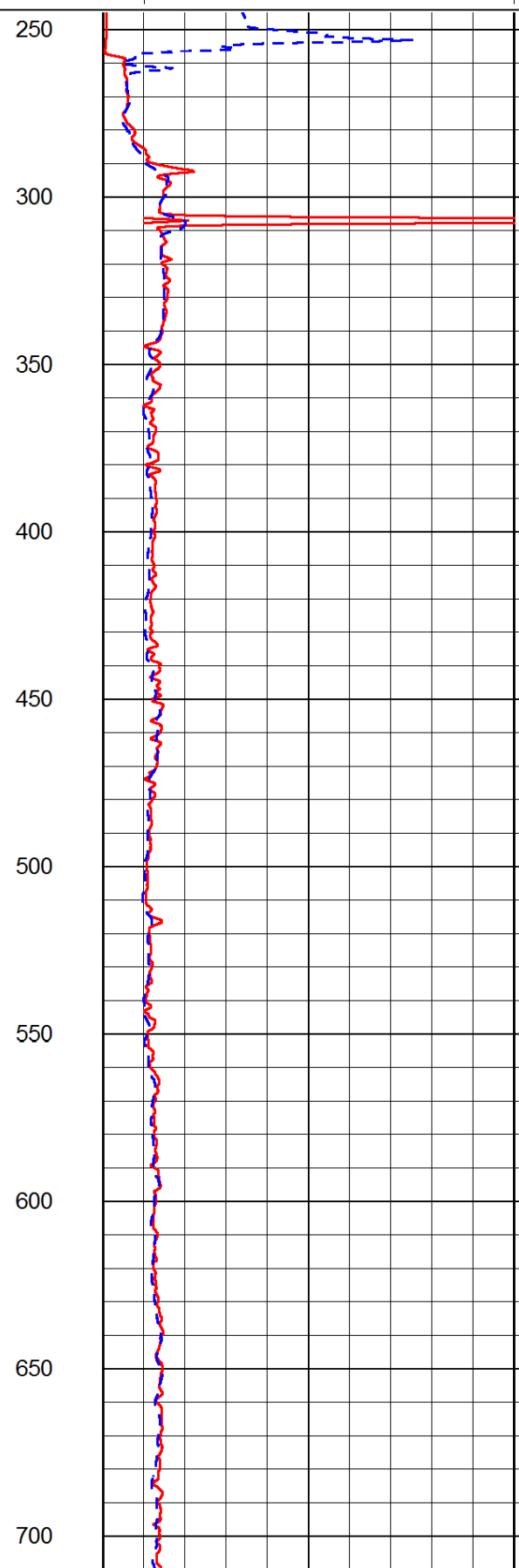
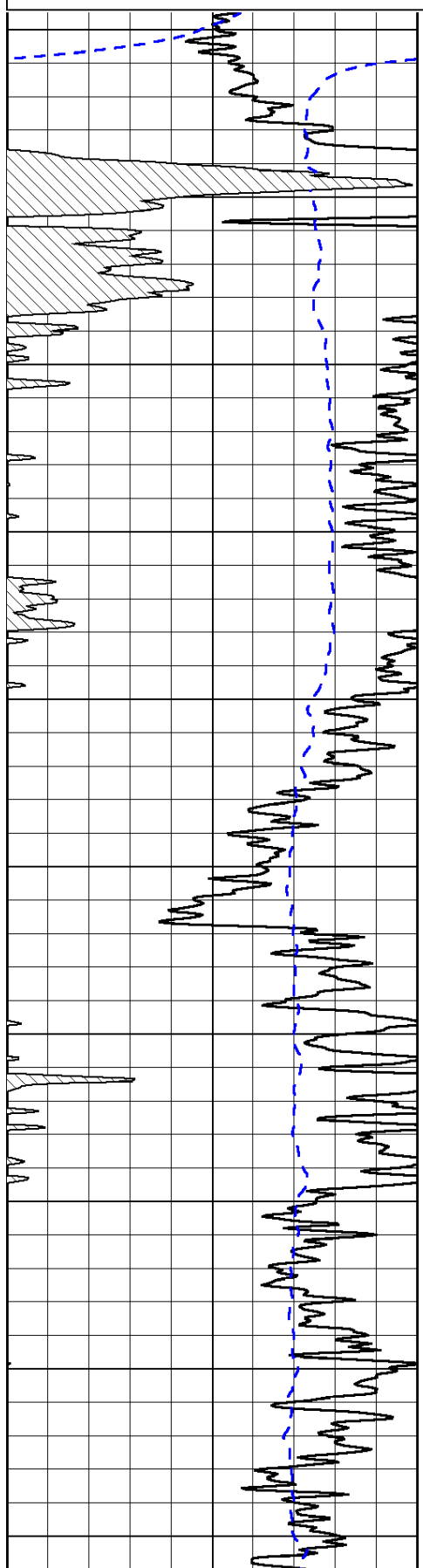
Oakley (Rexford Exit) 1 North to F Road, 1 East to 30 Road, 1/2 North, West Into

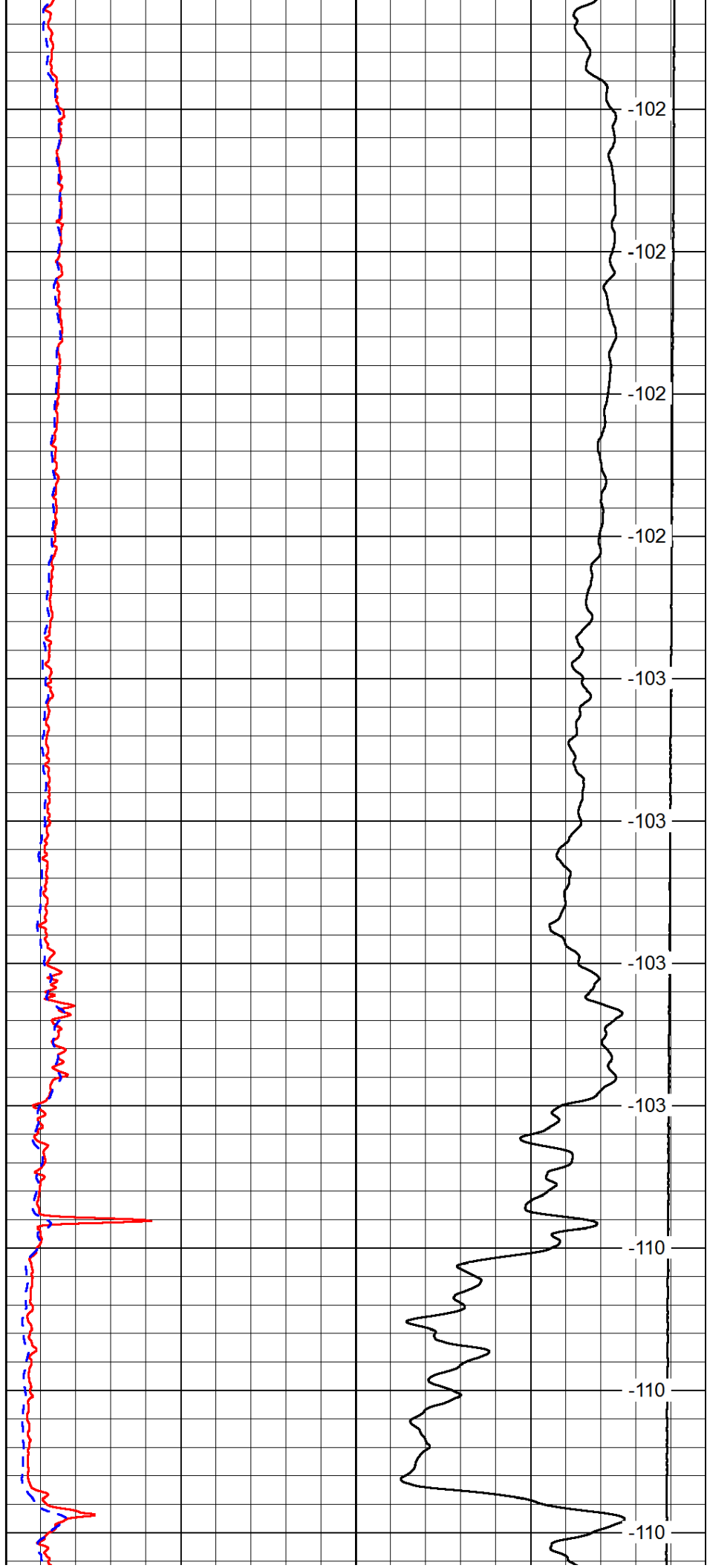
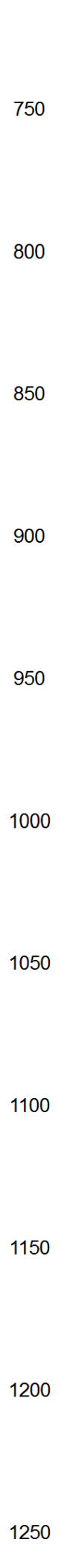
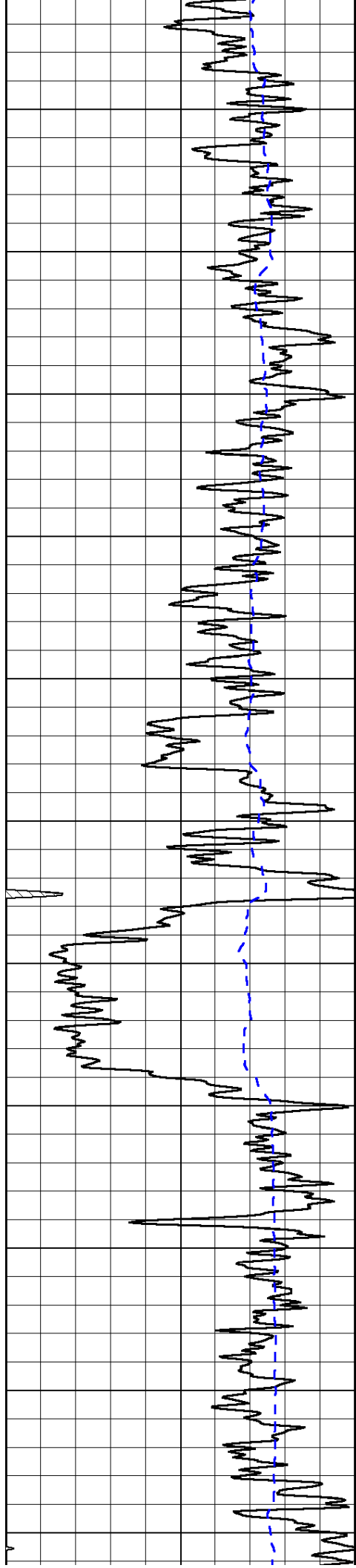
Database File: c:\warrior\data\brito_johnson-robben unit #1-2\brito_johnson-robben_1-2hd.db
Dataset Pathname: dil/britstck
Presentation Format: dil2in
Dataset Creation: Sat May 18 23:04:03 2013
Charted by: Depth in Feet scaled 1:600

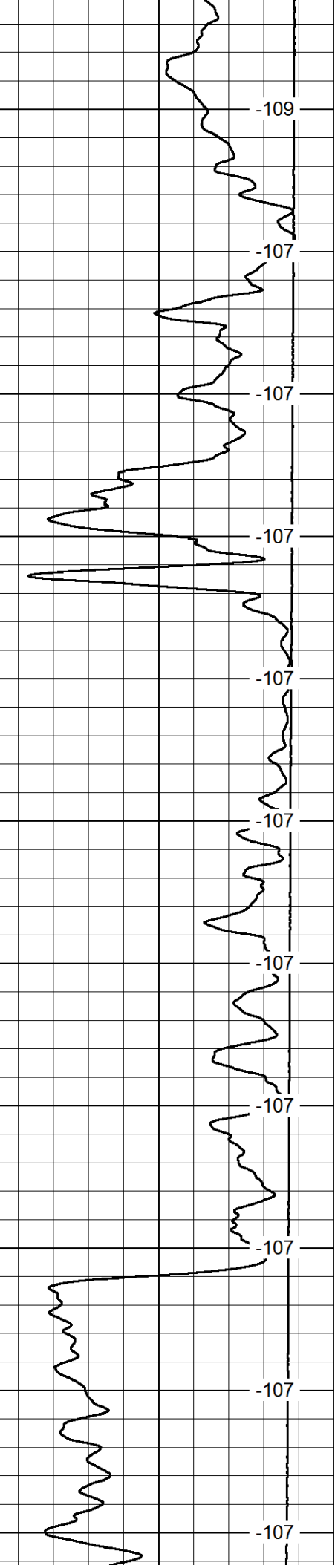
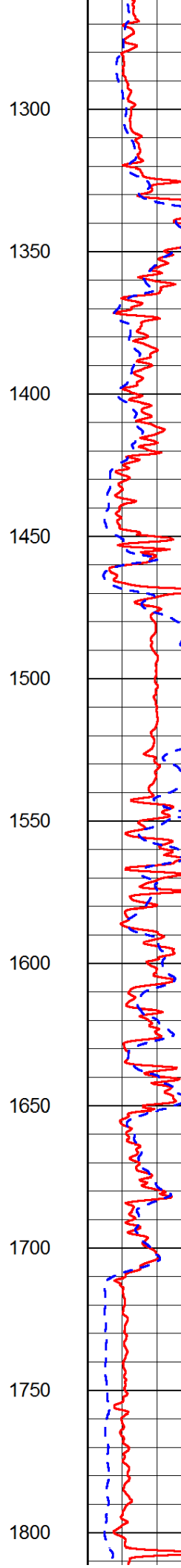
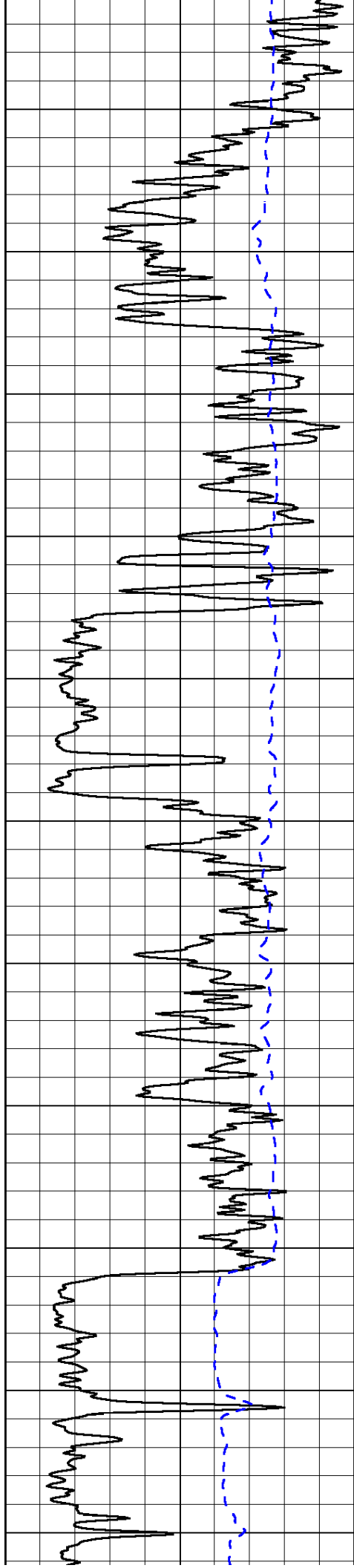
0	Gamma Ray	150
-200	SP (mV)	0

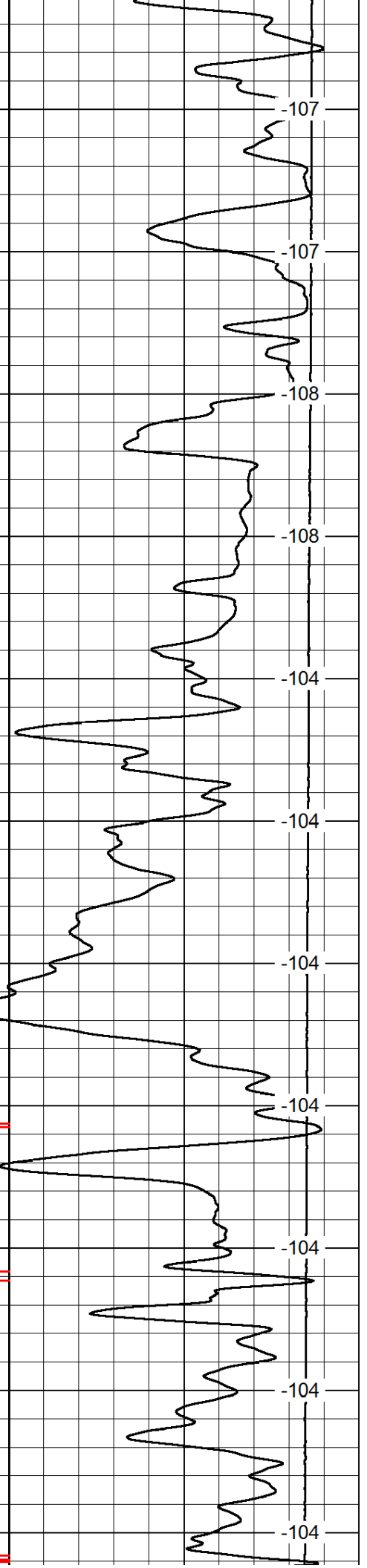
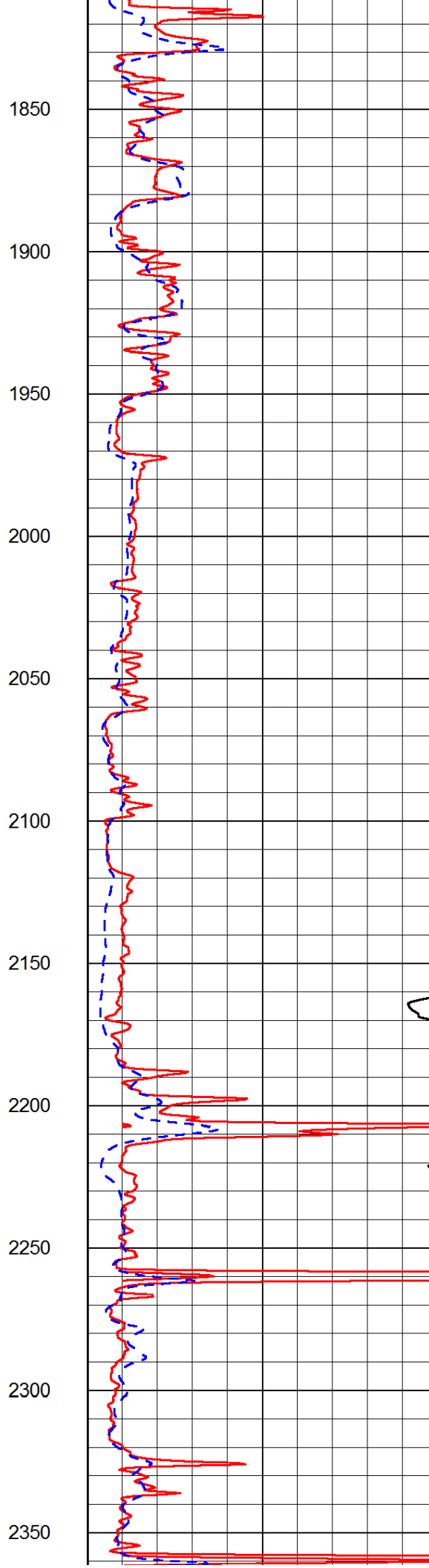
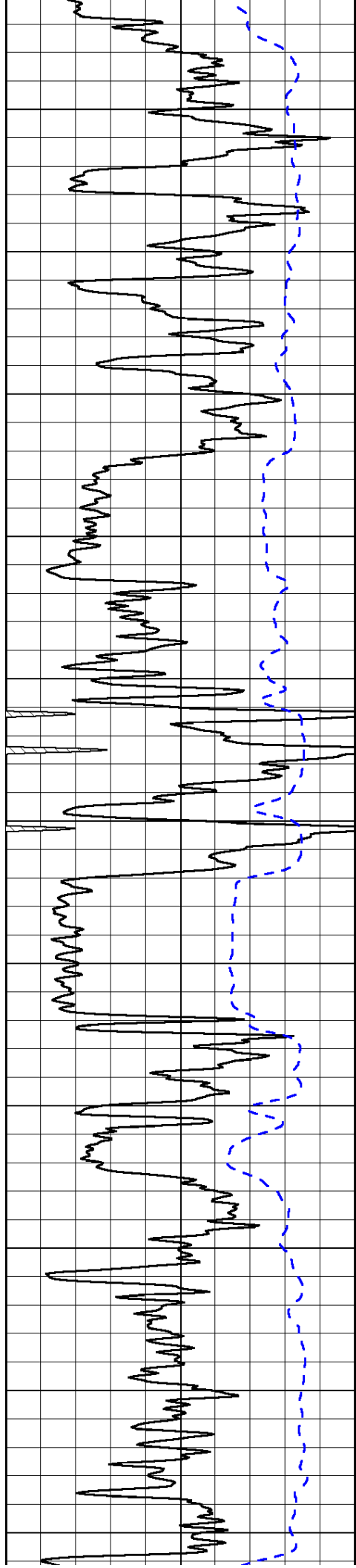
0	Shallow Resistivity	50
0	Deep Resistivity	50
1000	Conductivity	0
15000	Line Tension	0
50	Shallow Resistivity	500
50	Deep Resistivity	500

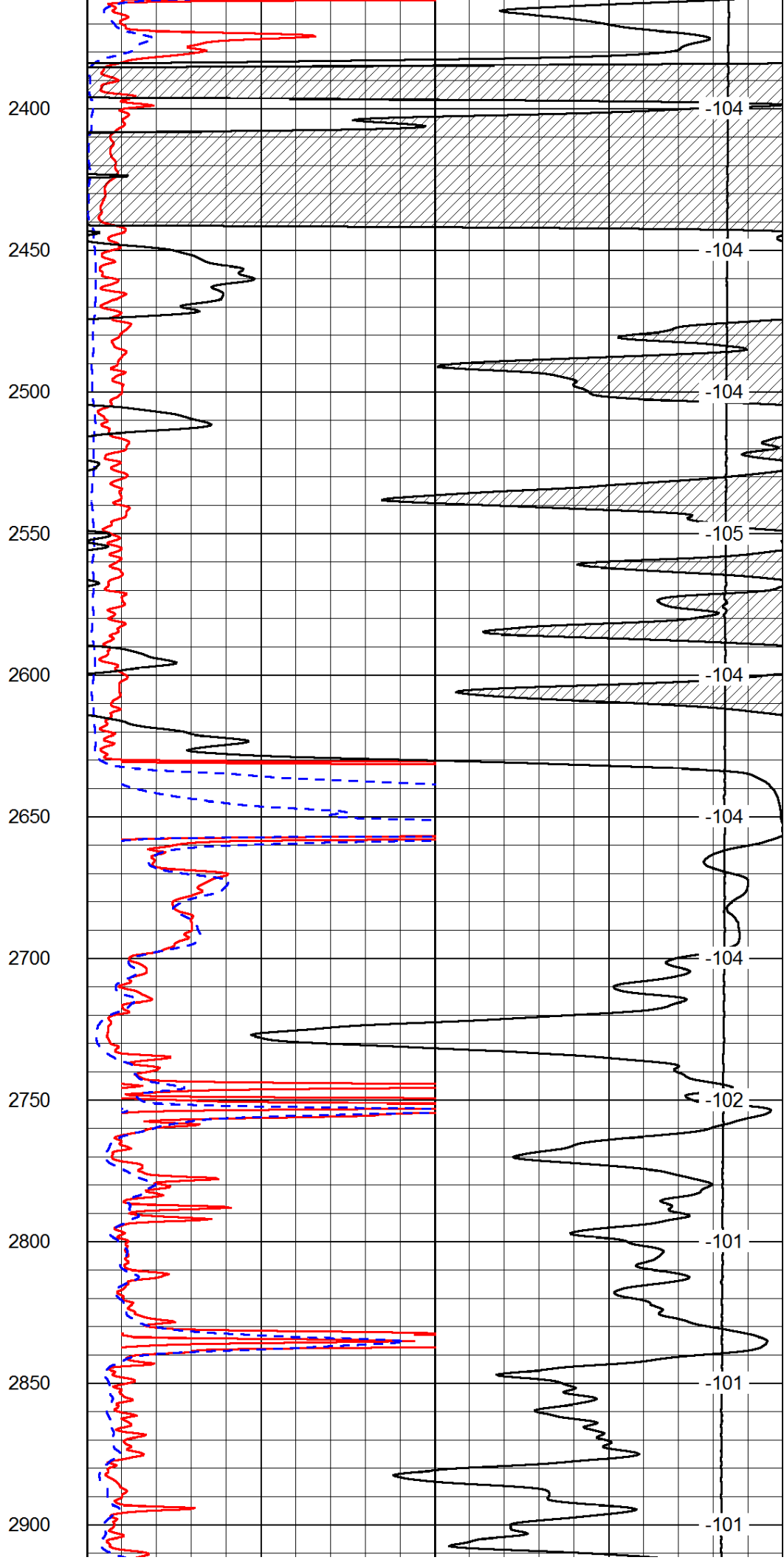
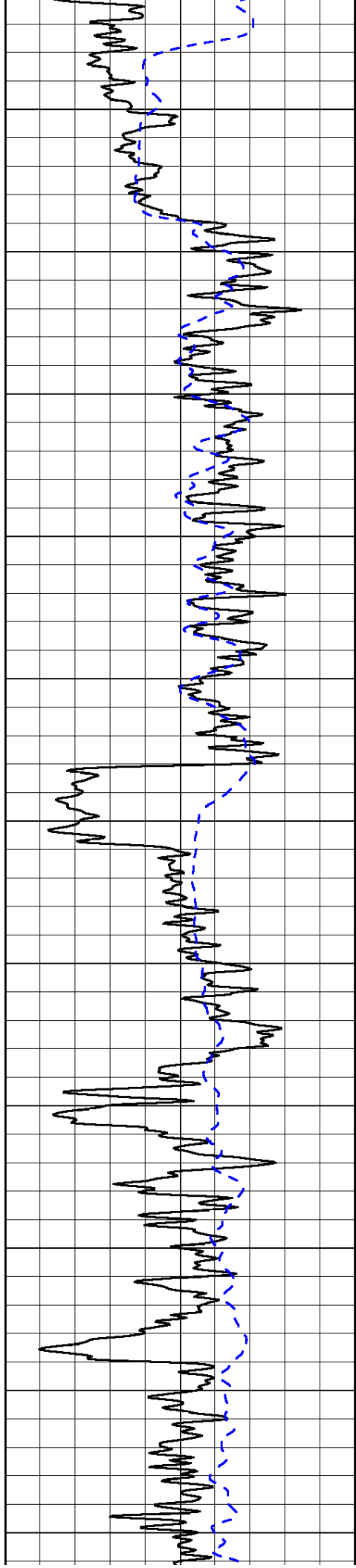
LSPD

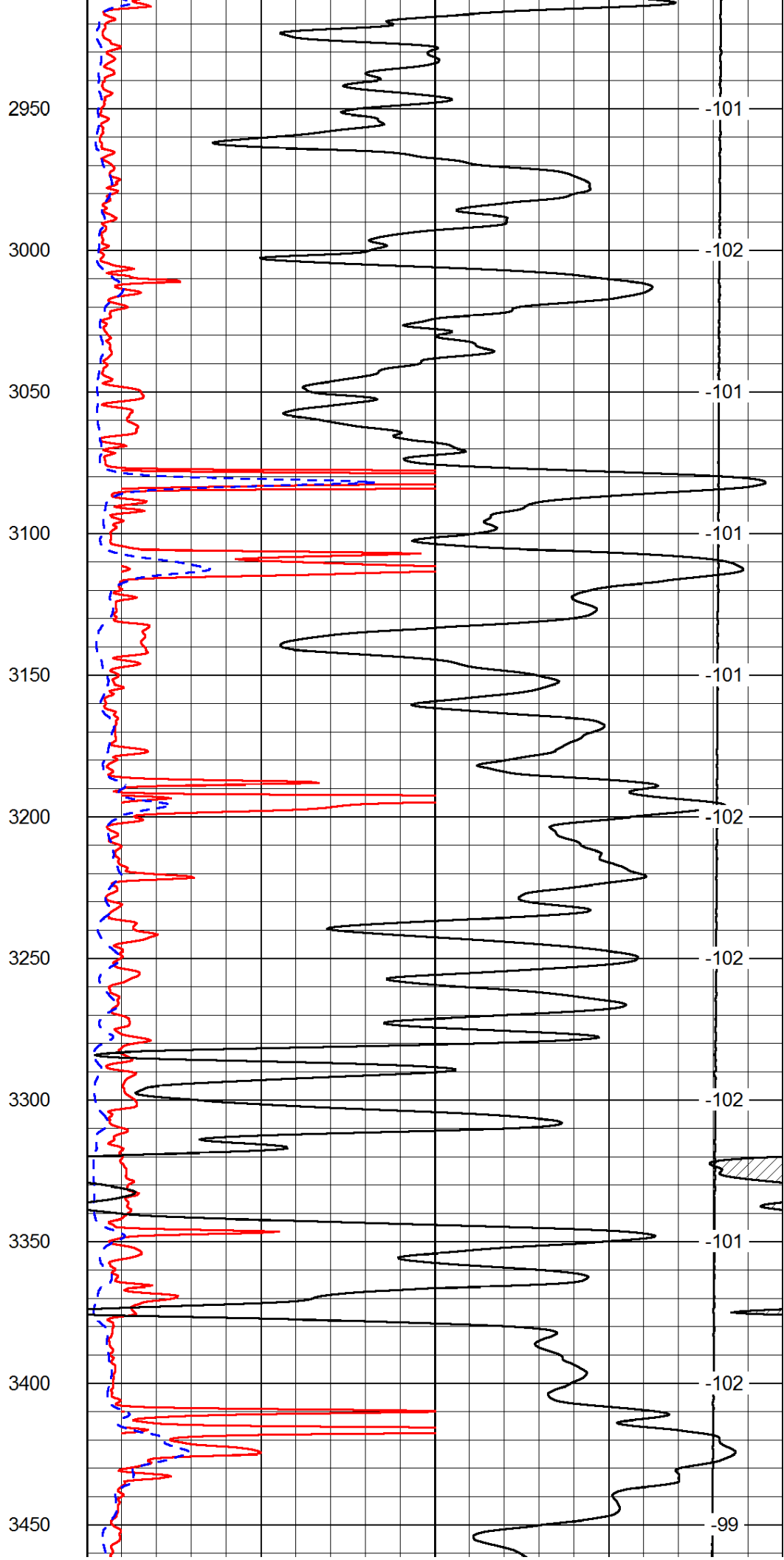
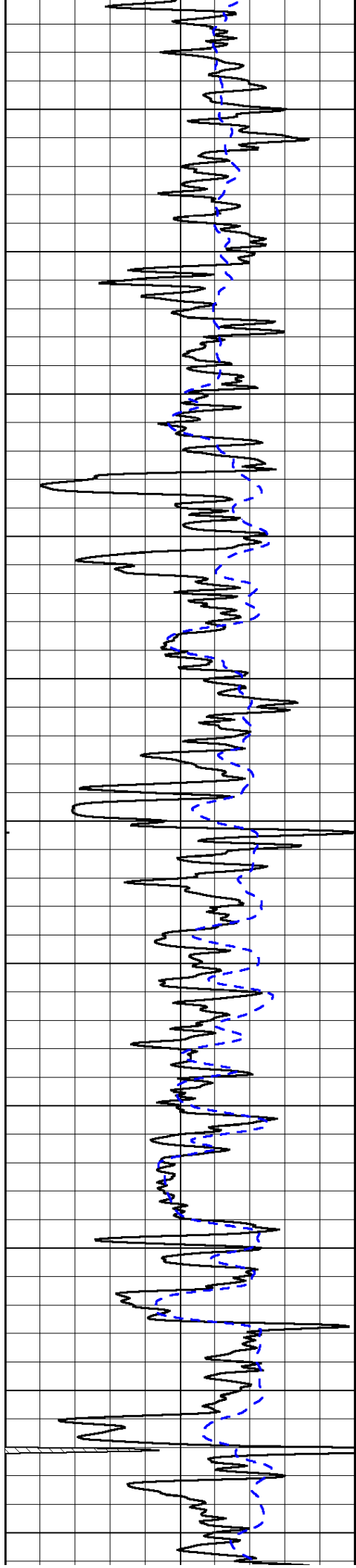


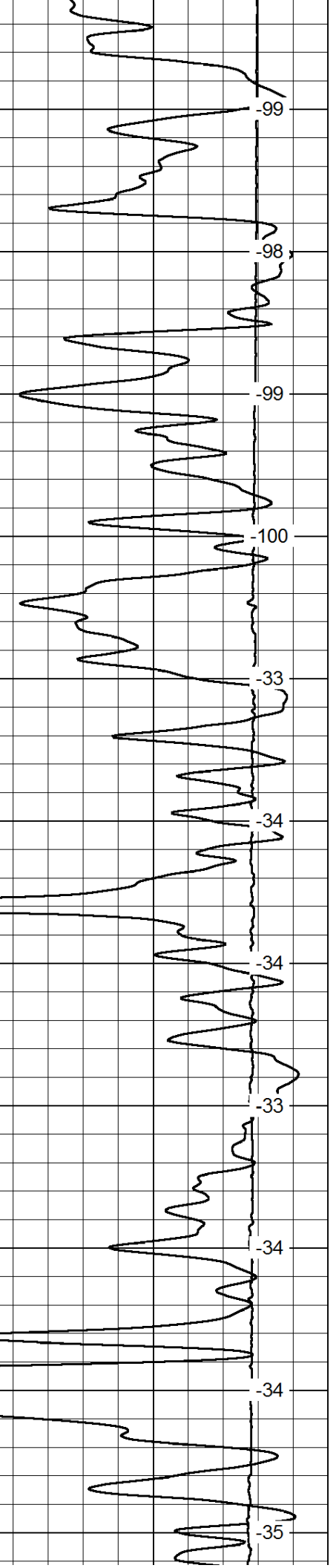
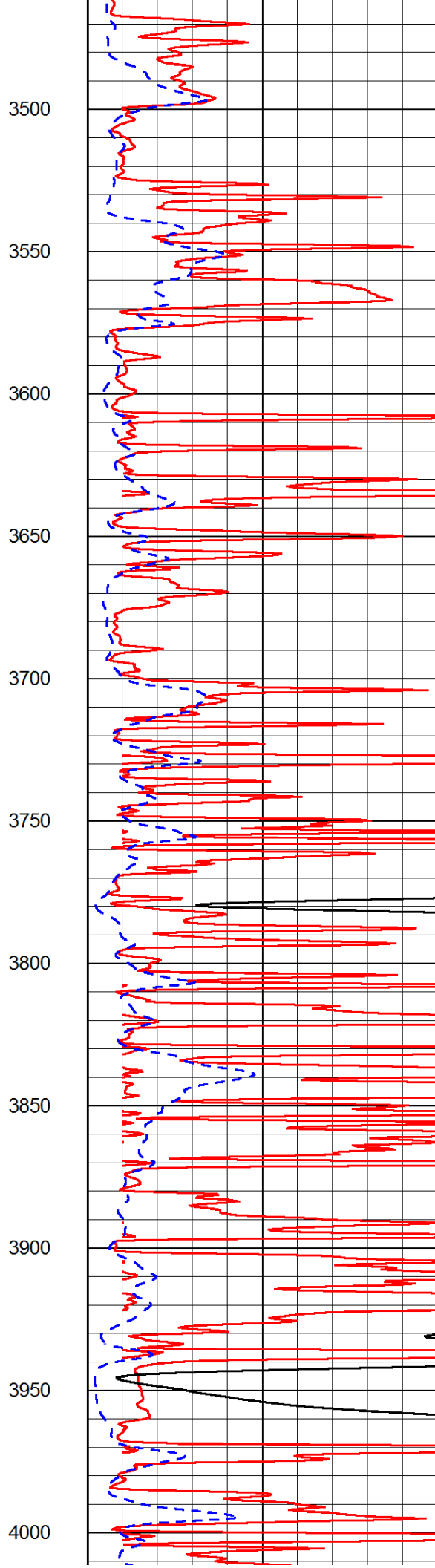
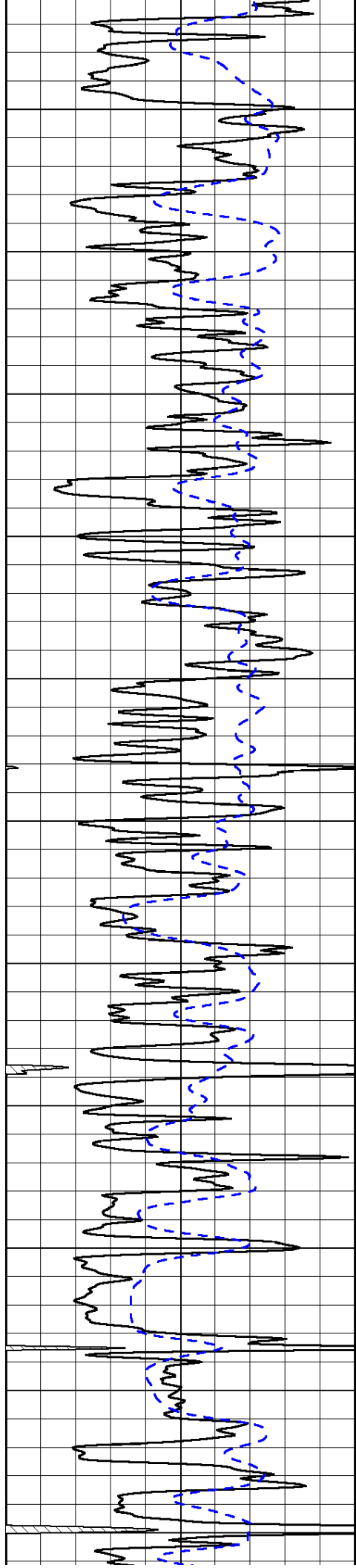


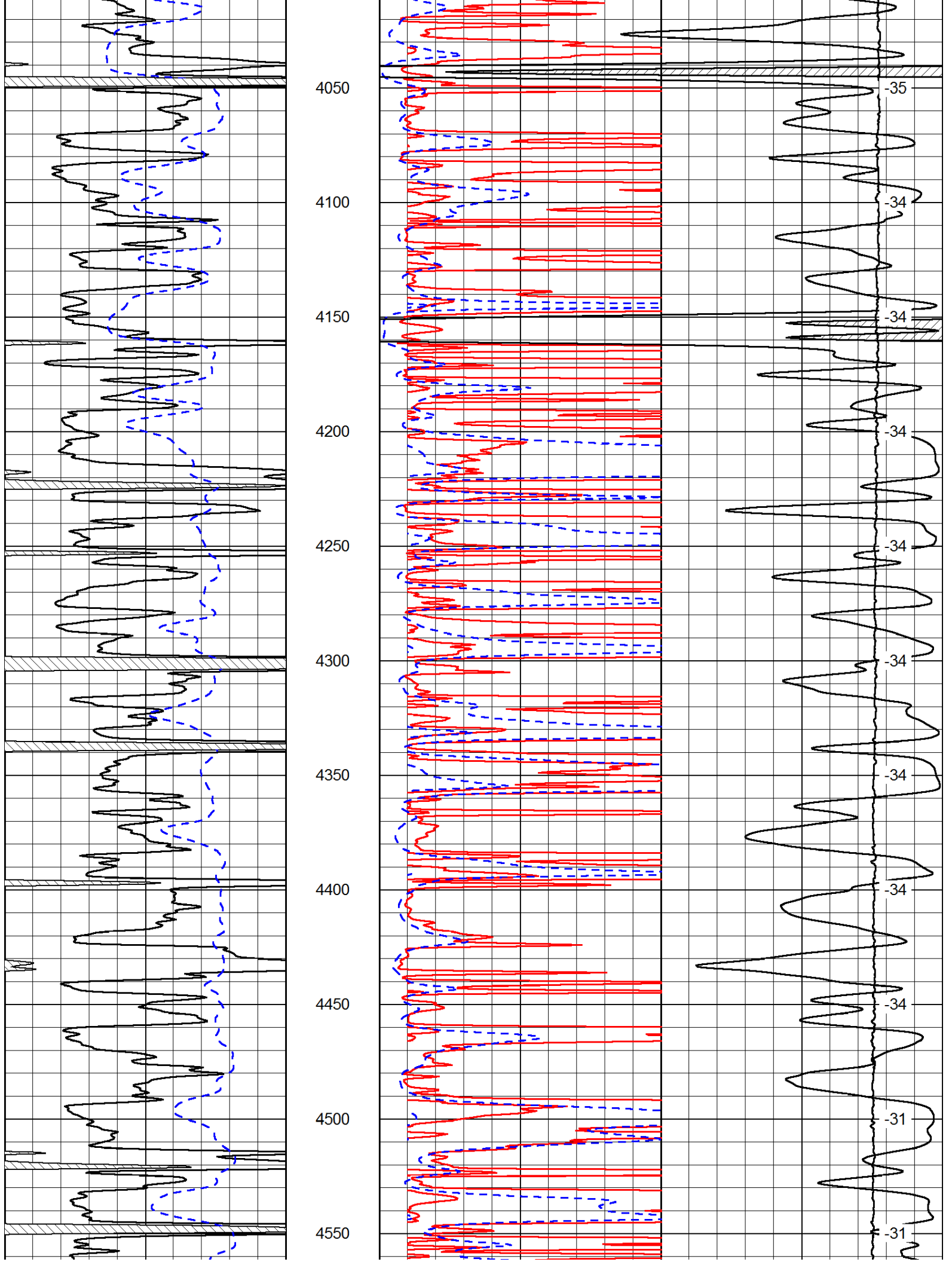


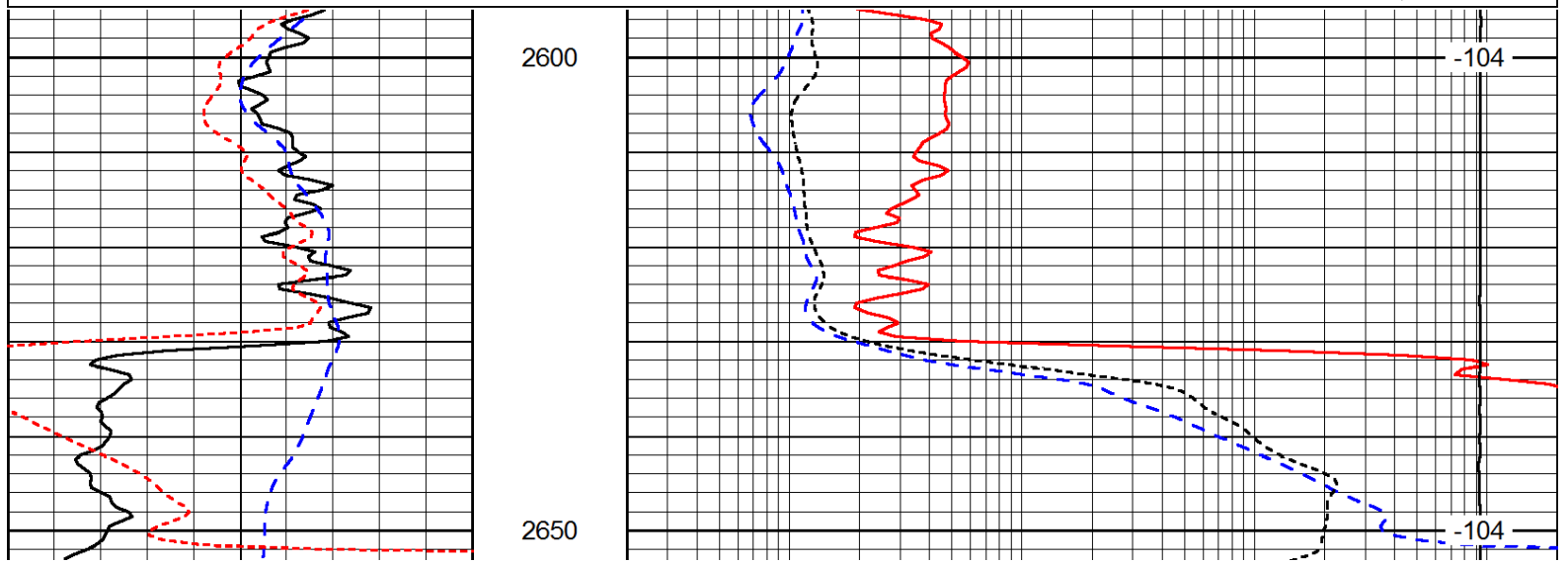
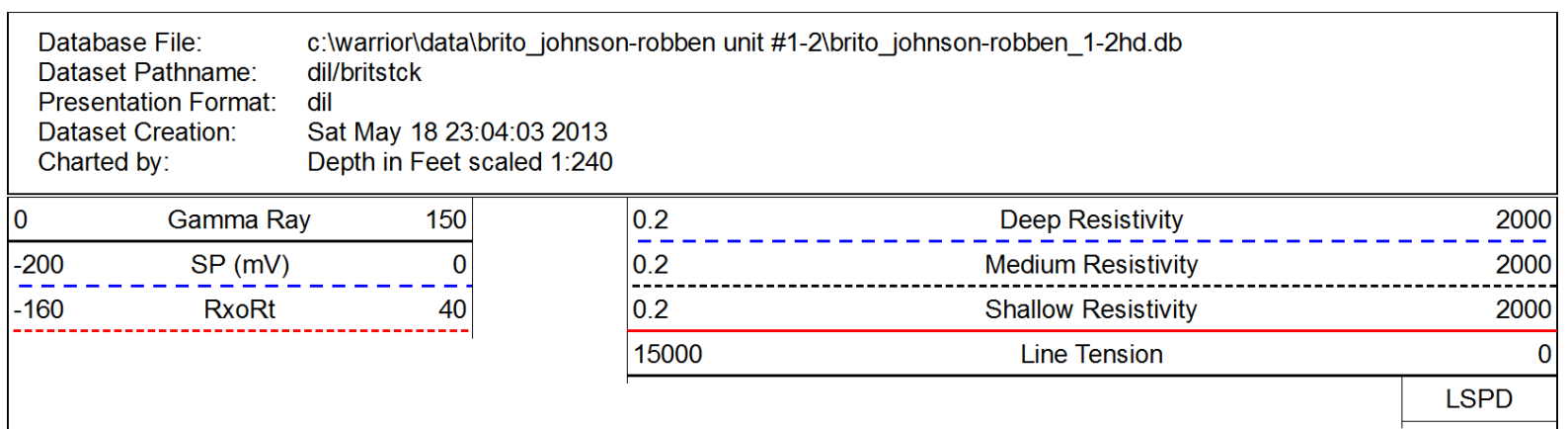
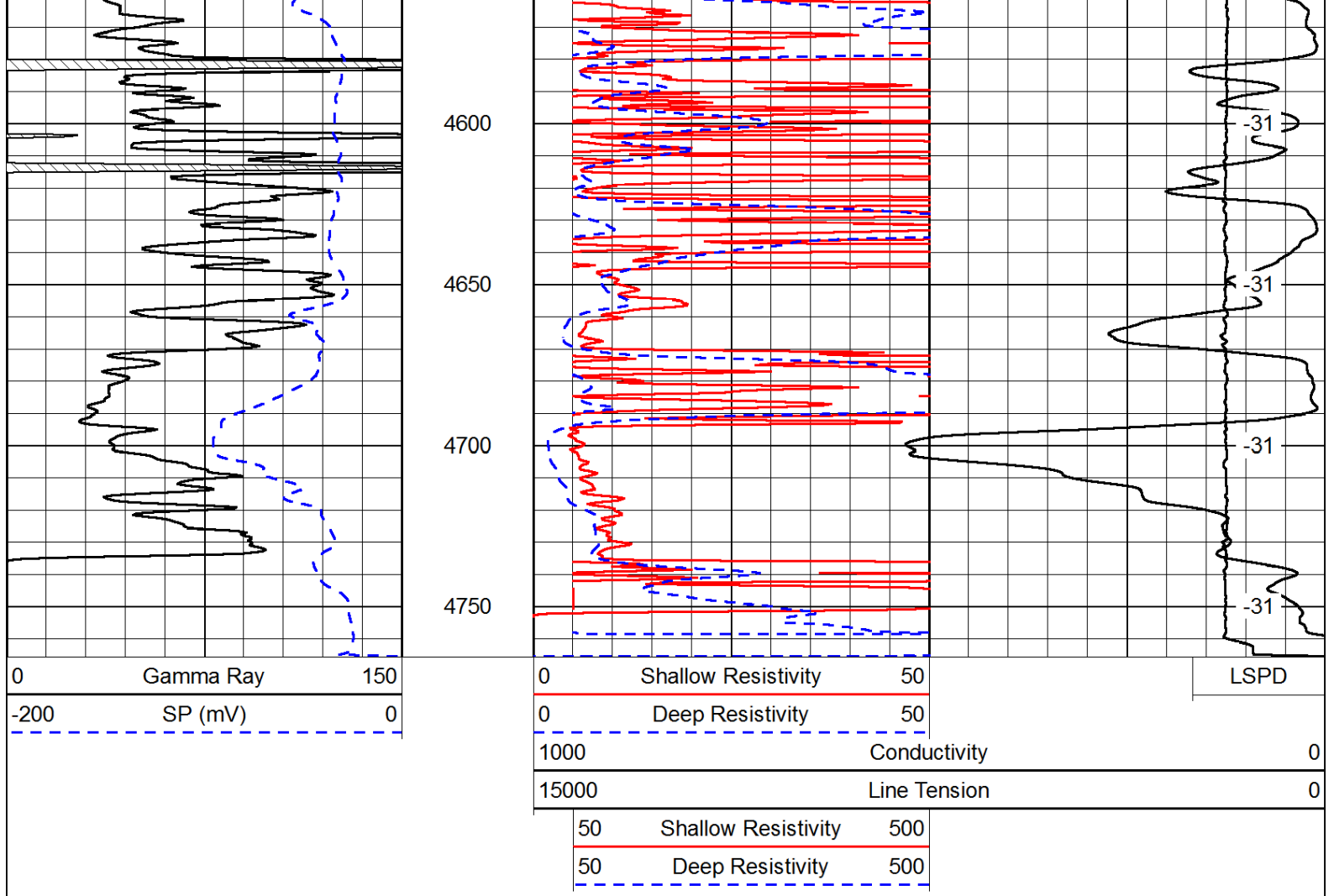


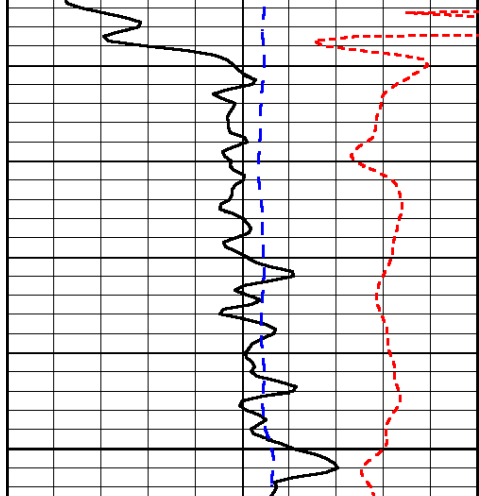






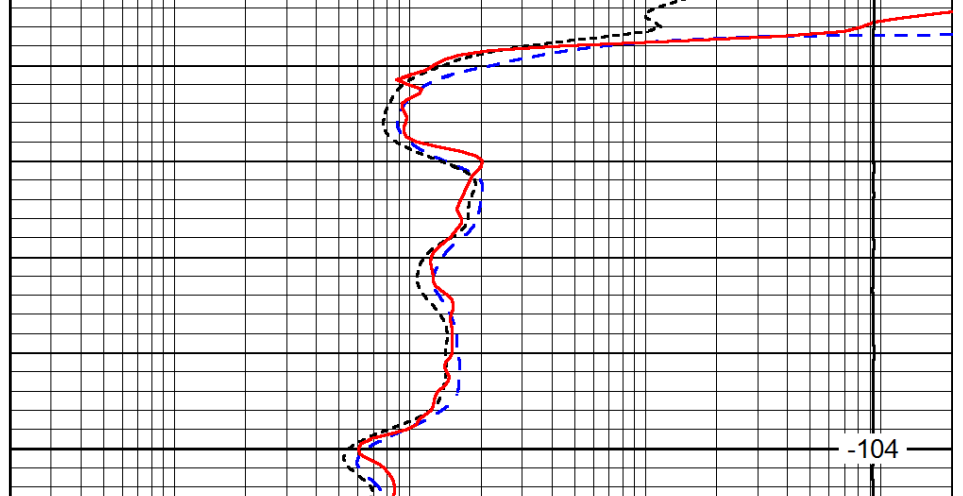






0	Gamma Ray	150
-200	SP (mV)	0
-160	RxoRt	40

2700



0.2	Deep Resistivity	2000
0.2	Medium Resistivity	2000
0.2	Shallow Resistivity	2000
15000	Line Tension	0

-104

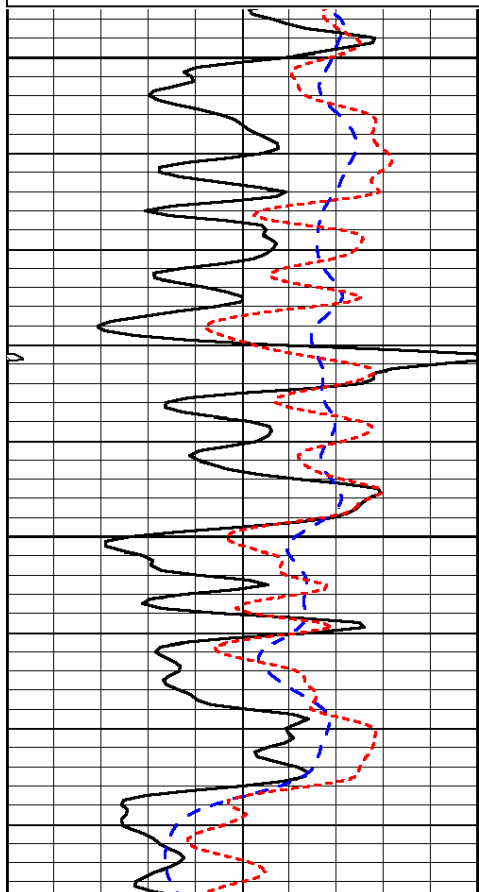
LSPD

Database File: c:\warrior\data\brito_johnson-robben unit #1-2\brito_johnson-robben_1-2hd.db
 Dataset Pathname: dil/britstck
 Presentation Format: dil
 Dataset Creation: Sat May 18 23:04:03 2013
 Charted by: Depth in Feet scaled 1:240

0	Gamma Ray	150
-200	SP (mV)	0
-160	RxoRt	40

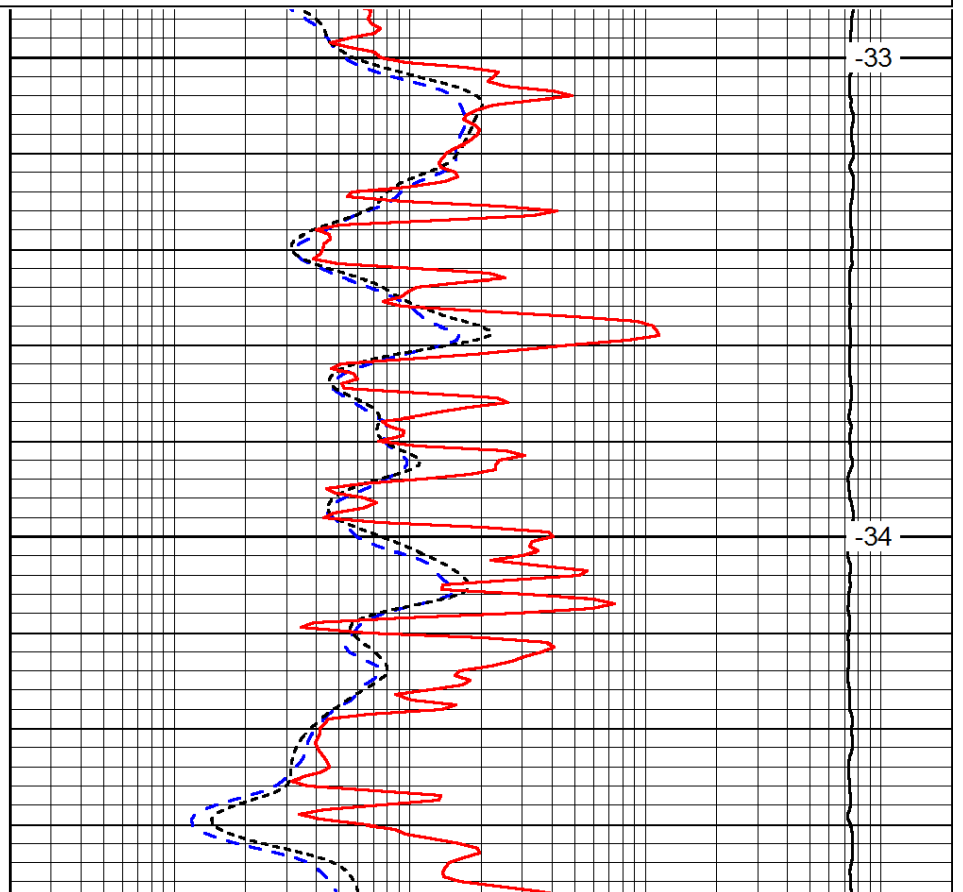
0.2	Deep Resistivity	2000
0.2	Medium Resistivity	2000
0.2	Shallow Resistivity	2000
15000	Line Tension	0

LSPD



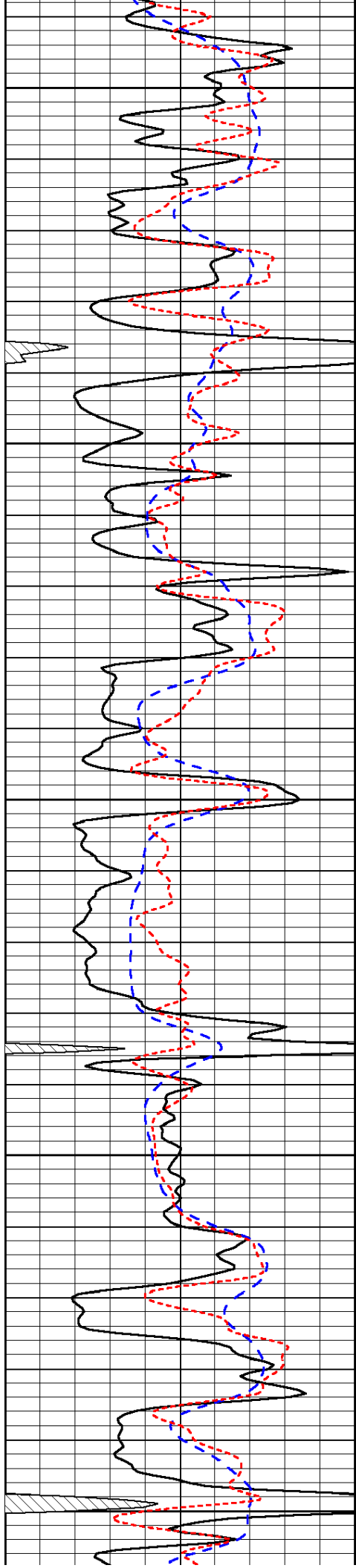
3700

3750



-33

-34



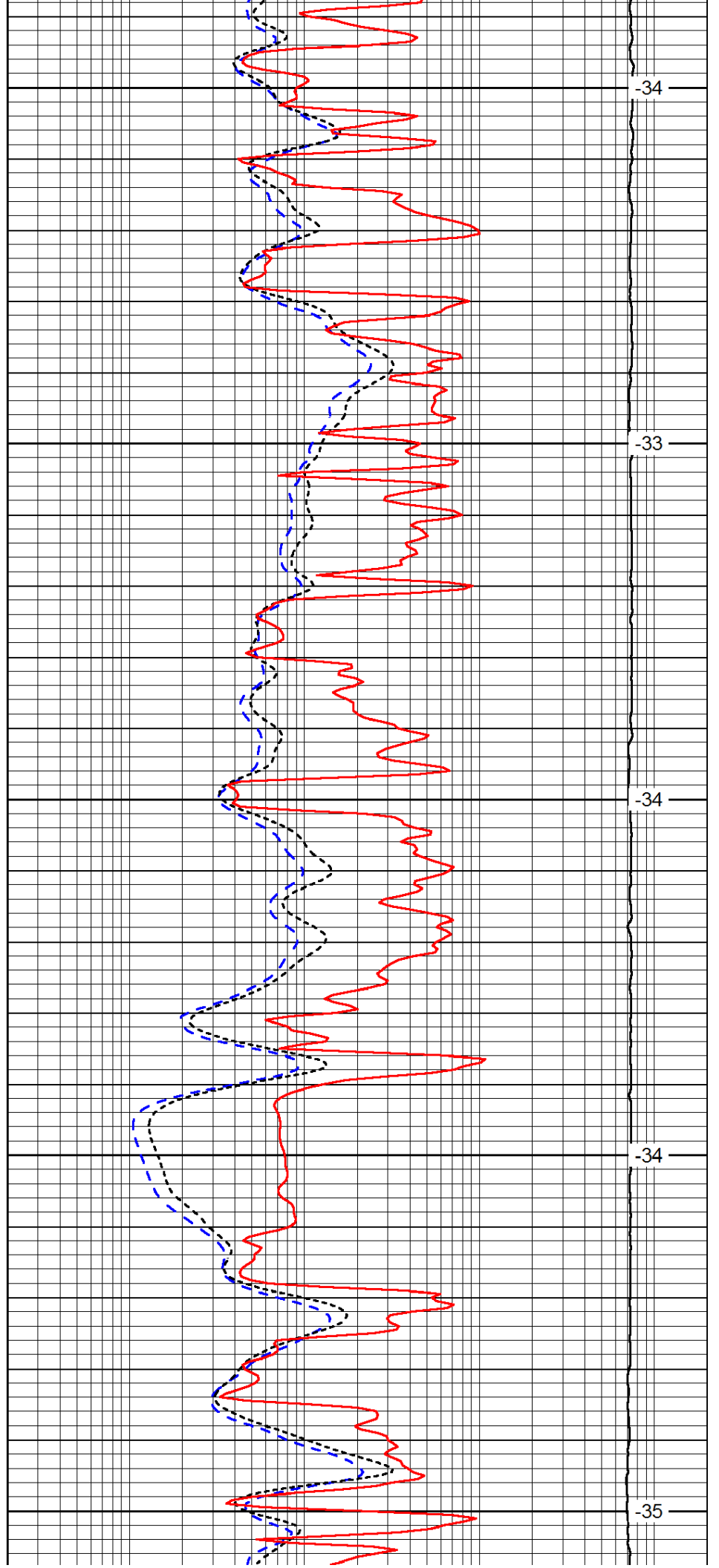
3800

3850

3900

3950

4000



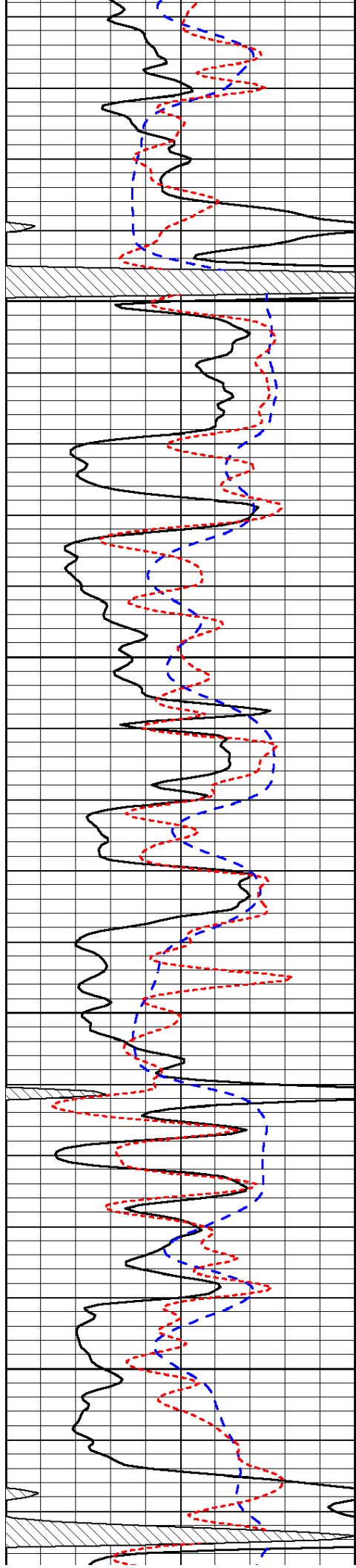
-34

-33

-34

-34

-35

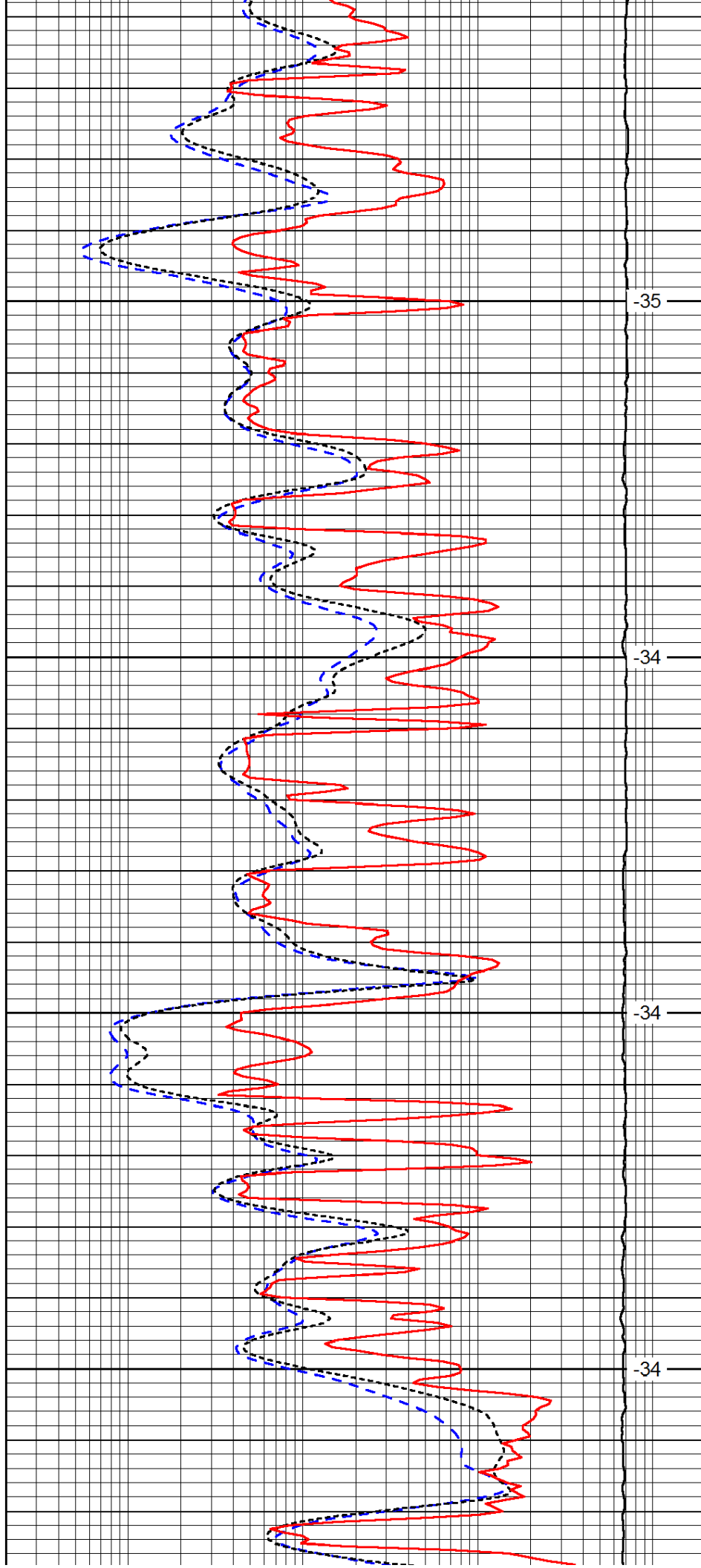


4050

4100

4150

4200

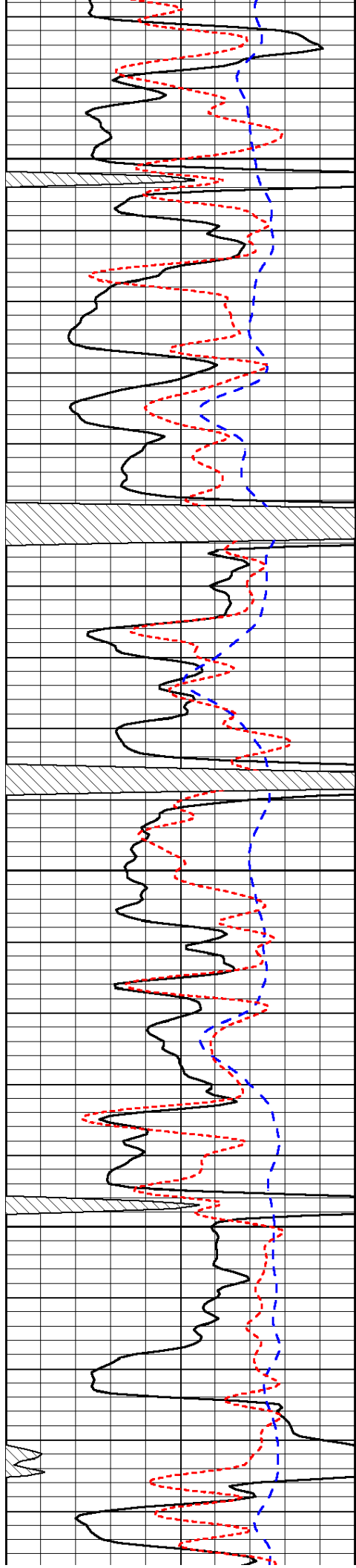


-35

-34

-34

-34

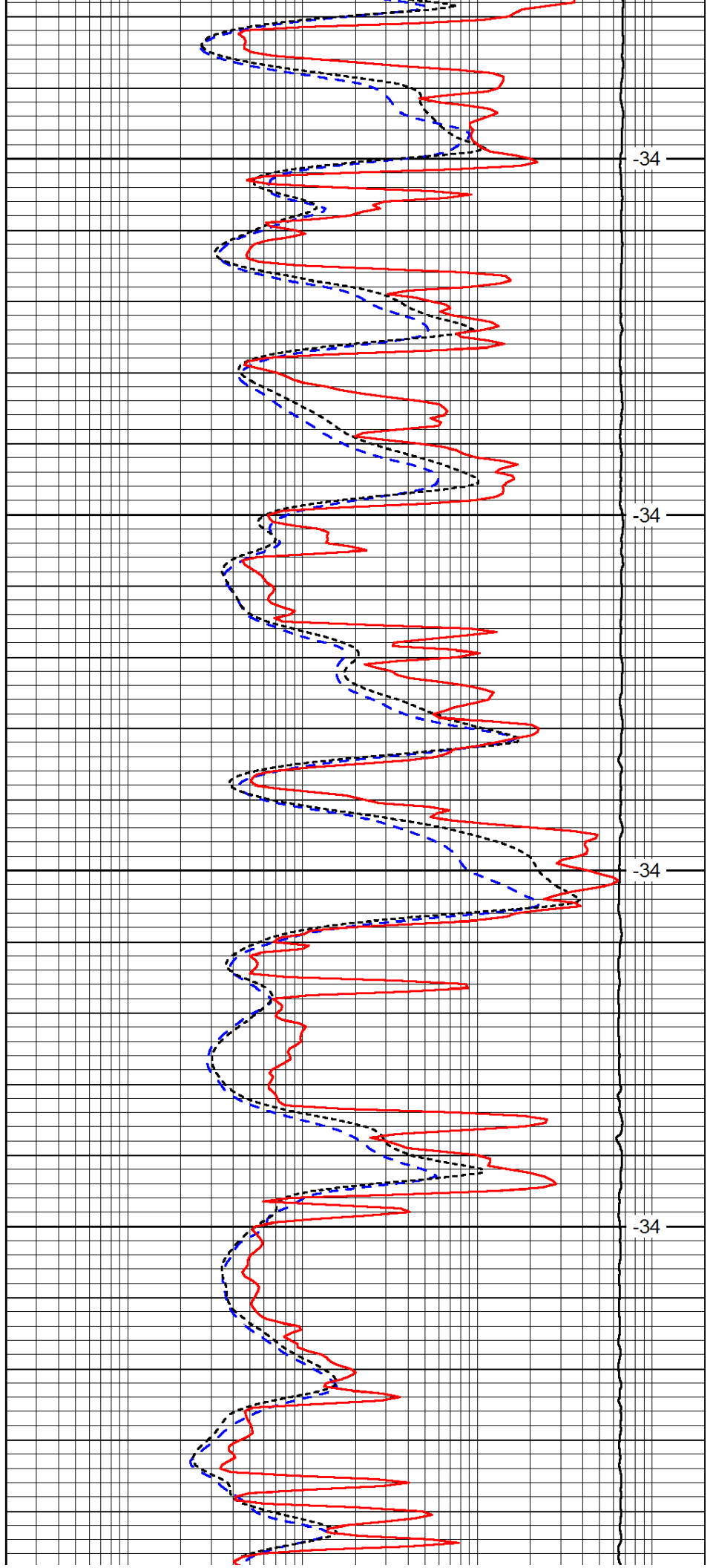


4250

4300

4350

4400

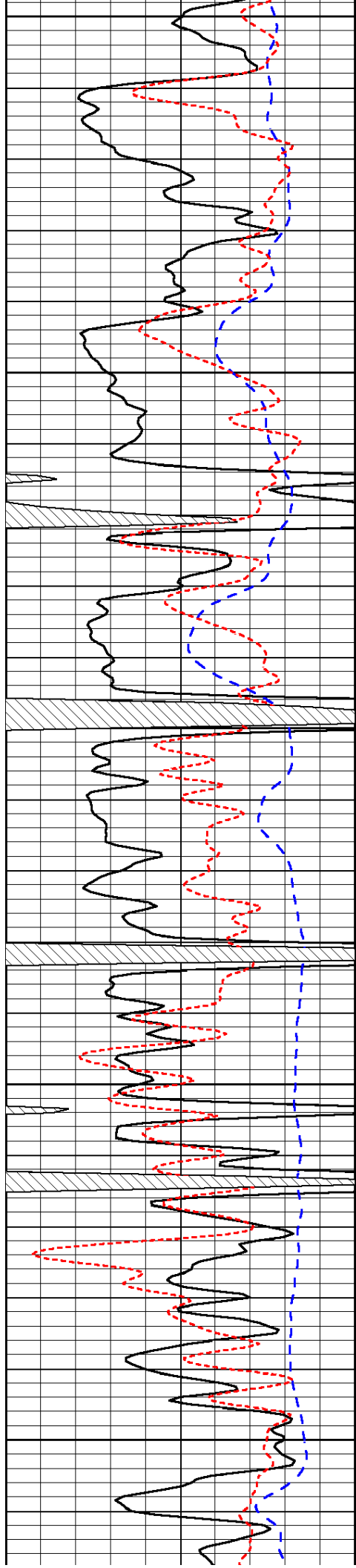


-34

-34

-34

-34



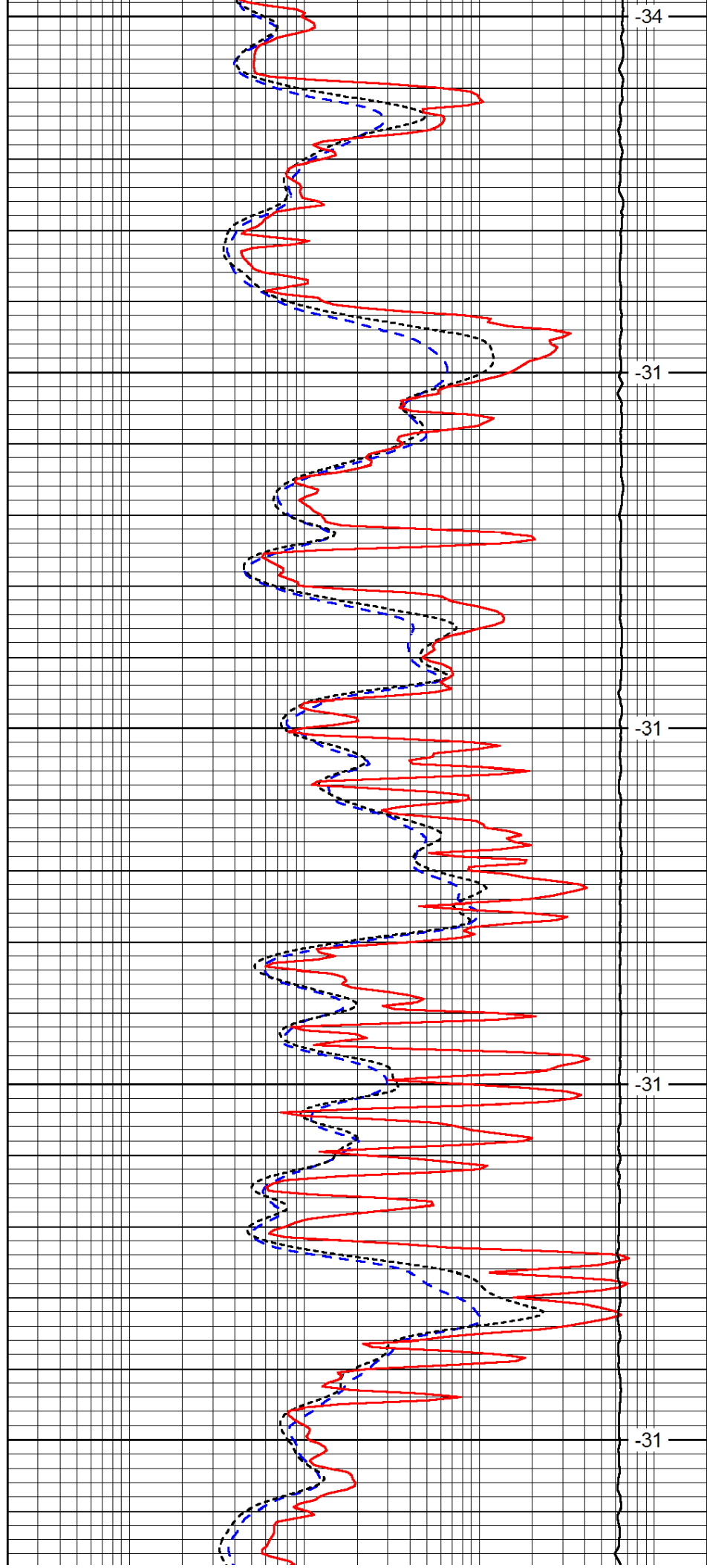
4450

4500

4550

4600

4650



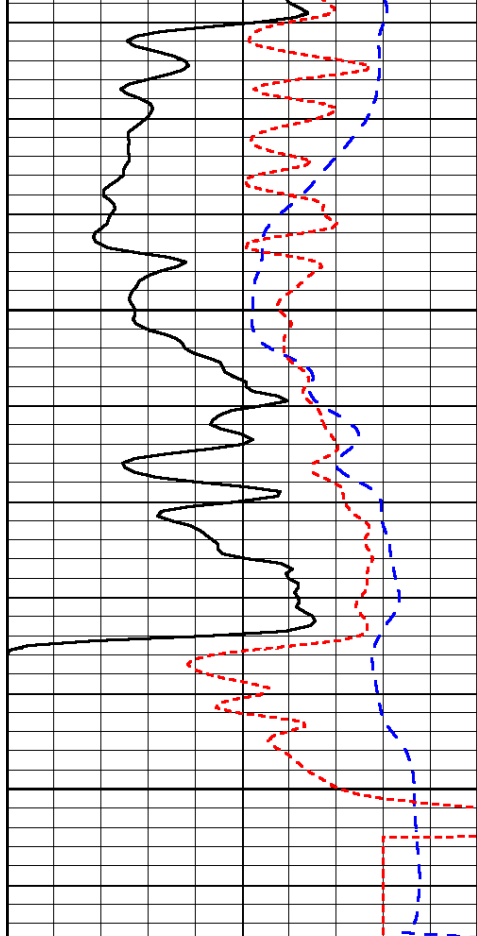
-34

-31

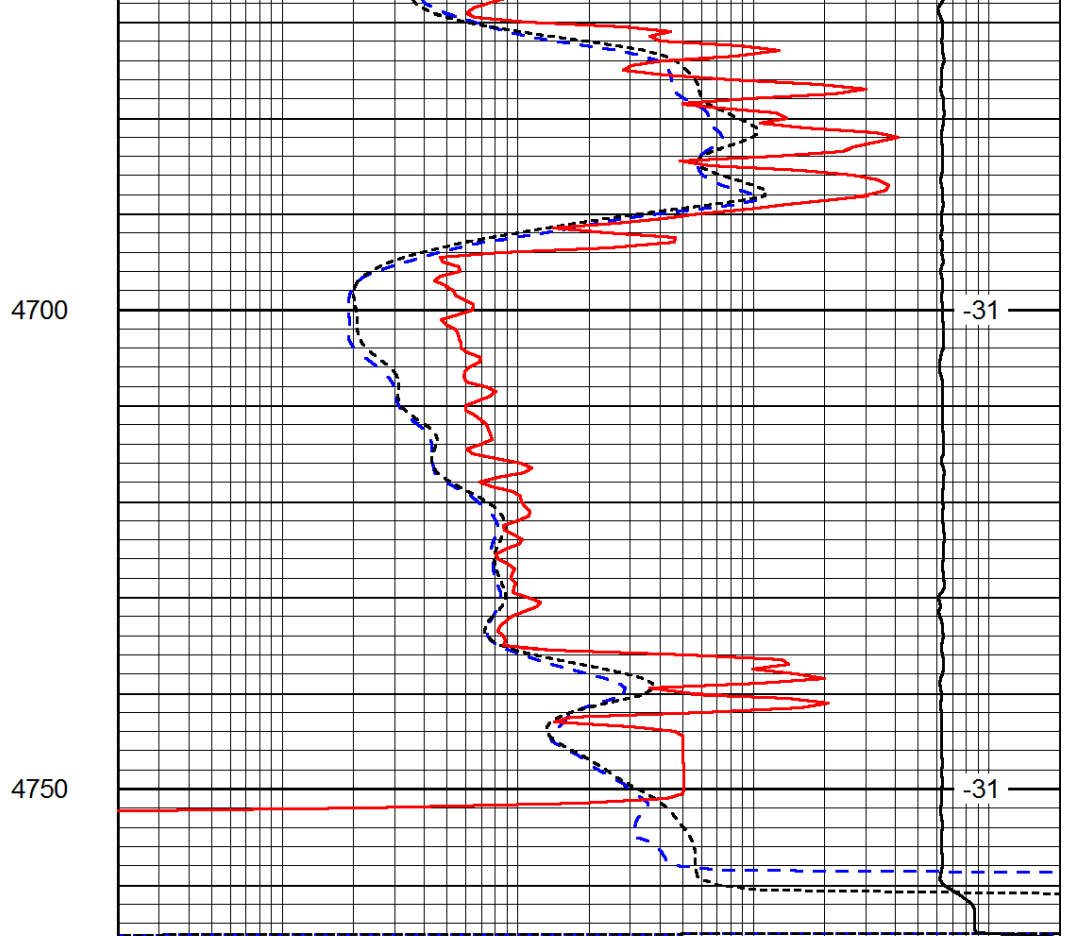
-31

-31

-31



0	Gamma Ray	150
-200	SP (mV)	0
-160	RxoRt	40



0.2	Deep Resistivity	2000
0.2	Medium Resistivity	2000
0.2	Shallow Resistivity	2000
15000	Line Tension	0

LSPD