



Pioneer Energy Services

Dual Compensated Porosity Log

15-193-20,887-00-00

API No.	15-193-20,887-00-00		
Company	Brito Oil Company, Inc.		
Well	Johnson-Robben Unit #1-2		
Field	Wildcat		
County	Thomas		
Location	1,950' FNL & 880' FEL (SE NW/SE NE)		
State	Kansas		
Sec: 2	Twp: 10S	Rge: 32W	Other Services DIL MEL
Permanent Datum	Ground Level	Elevation 3075	Elevation
Log Measured From	Kelly Bushing	5 Ft. Above Perm. Datum	K.B. 3080
Drilling Measured From	Kelly Bushing		D.F. G.L. 3075

Date	5/18/2013
Run Number	One
Type Log	CNL / CDL
Depth Driller	4760
Depth Logger	4760
Bottom Logged Interval	4739
Top Logged Interval	3700
Type Fluid In Hole	Chemical
Salinity, PPM CL	2600
Density	9.2
Level	Full
Max. Rec. Temp. F	124
Operating Rig Time	4 Hours
Equipment -- Location	108 Hays
Recorded By	J. Long
Witnessed By	Derek Patterson

Borehole Record				Casing Record			
Run No.	Bit	From	To	Size	Wgt.	From	To
1	12.25	00	258	8.625	24#	00	258
2	7.875	258	4760				

<<< Fold Here >>>

All interpretations are opinions based on inferences from electrical or other measurements and we cannot and do not guarantee the accuracy or correctness of any interpretation, and we shall not, except in the case of gross or willful negligence on our part, be liable or responsible for any loss, costs, damages, or expenses incurred or sustained by anyone resulting from any interpretation made by any of our officers, agents or employees. These interpretations are also subject to our general terms and conditions set out in our current Price Schedule.

Comments

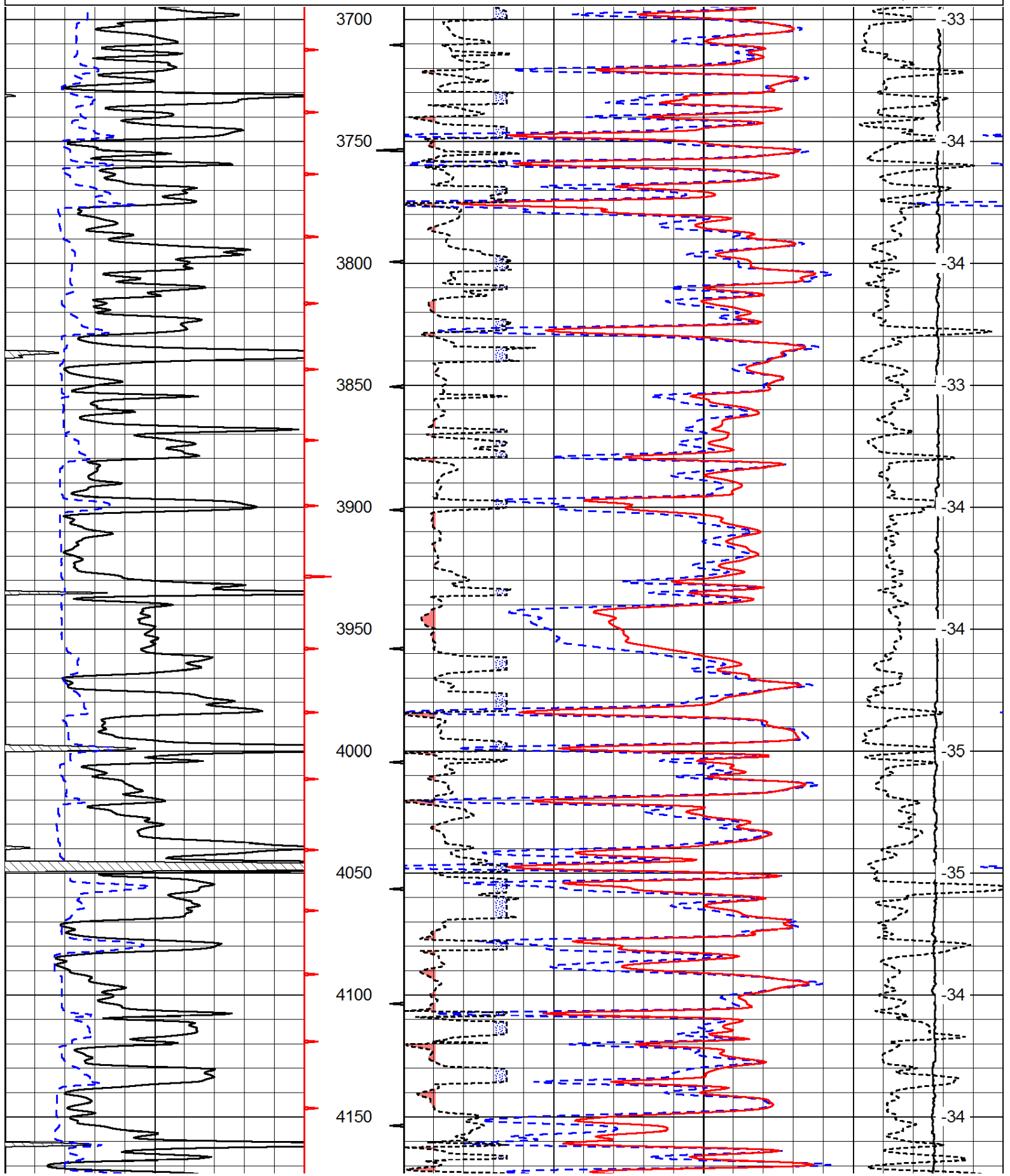
Thank you for using Pioneer Energy Services
www.pioneerenergy.com
 785 625 3858

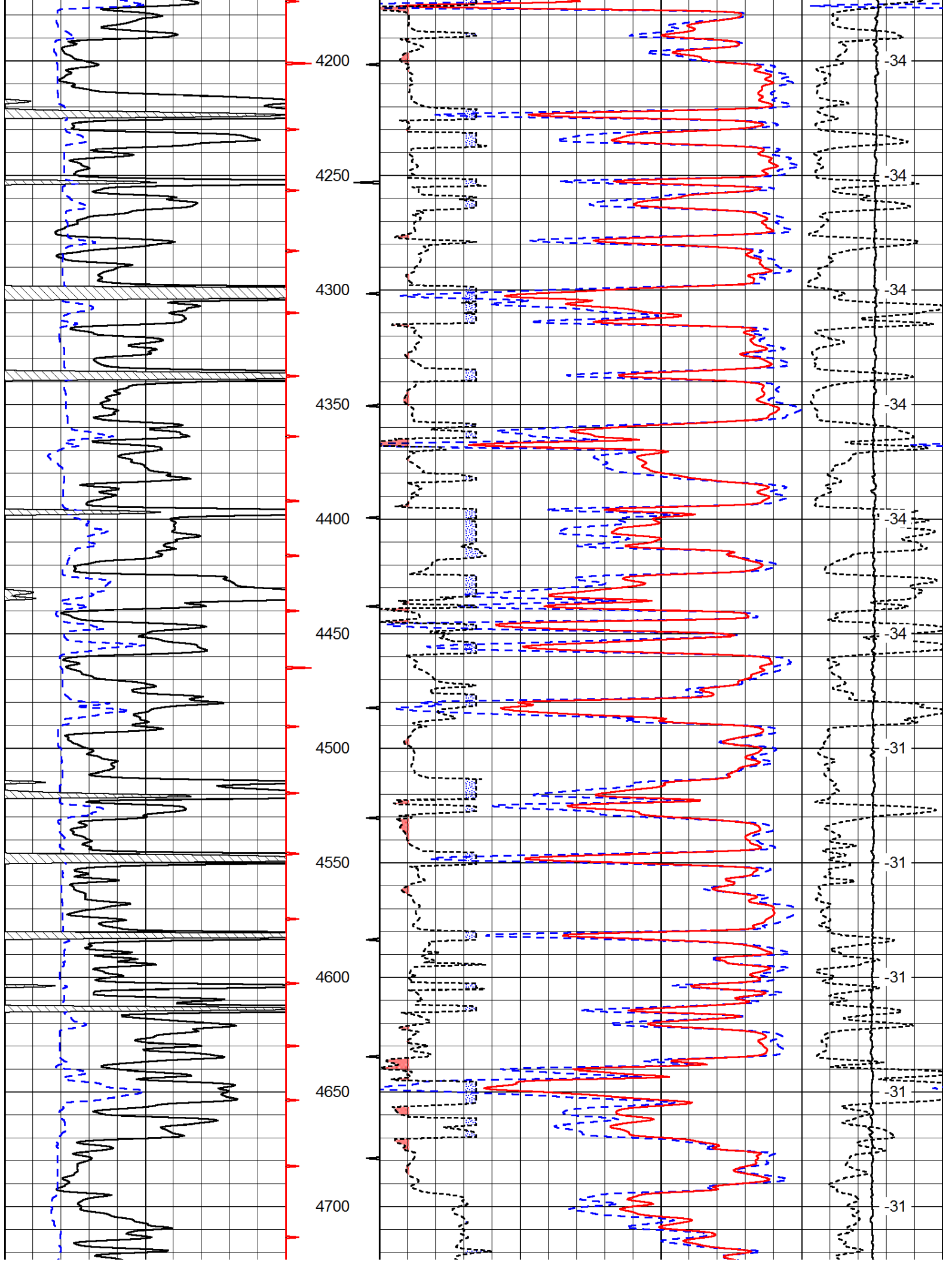
Oakley (Rexford Exit) 1 North to F Road, 1 East to 30 Road, 1/2 North, West Into

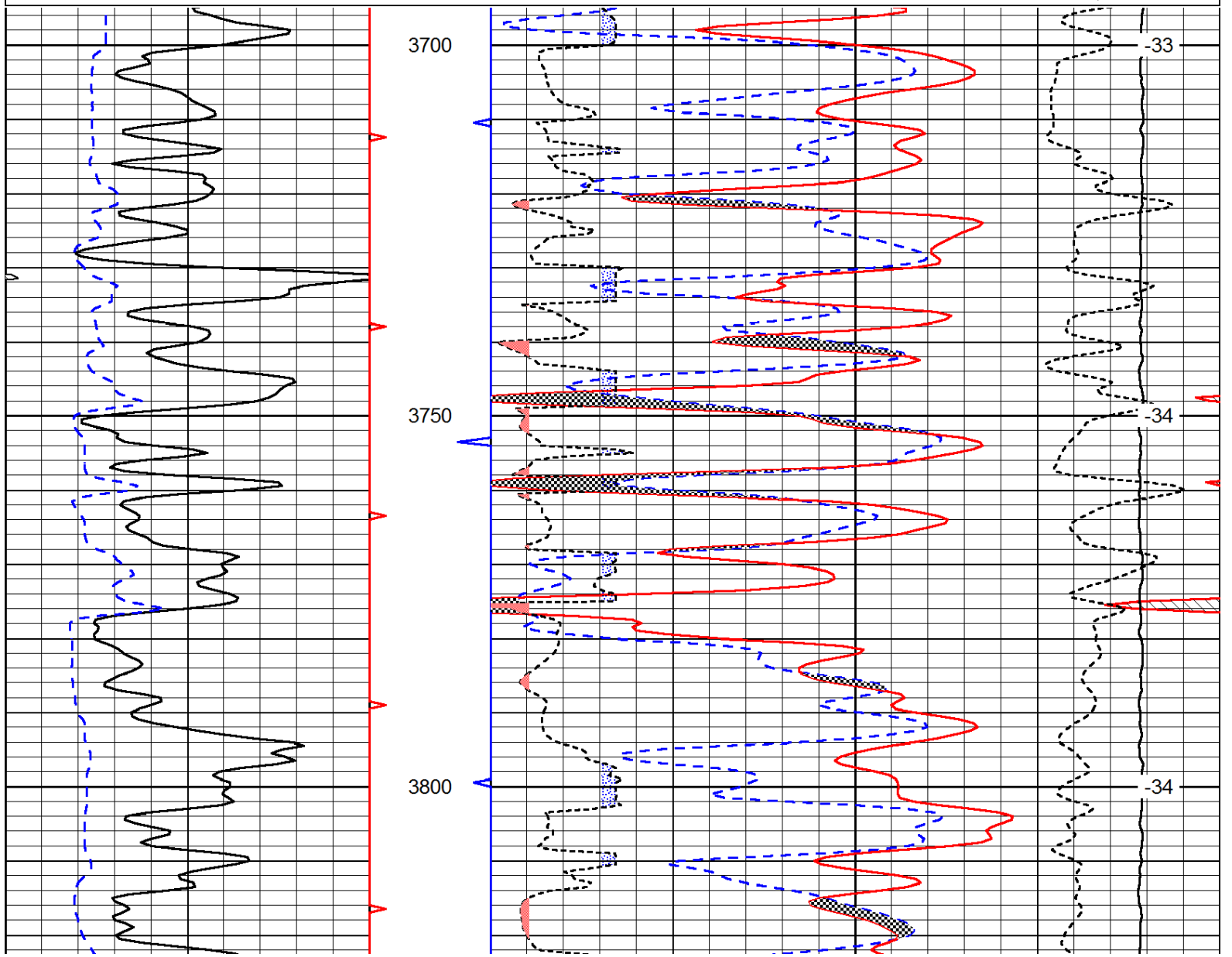
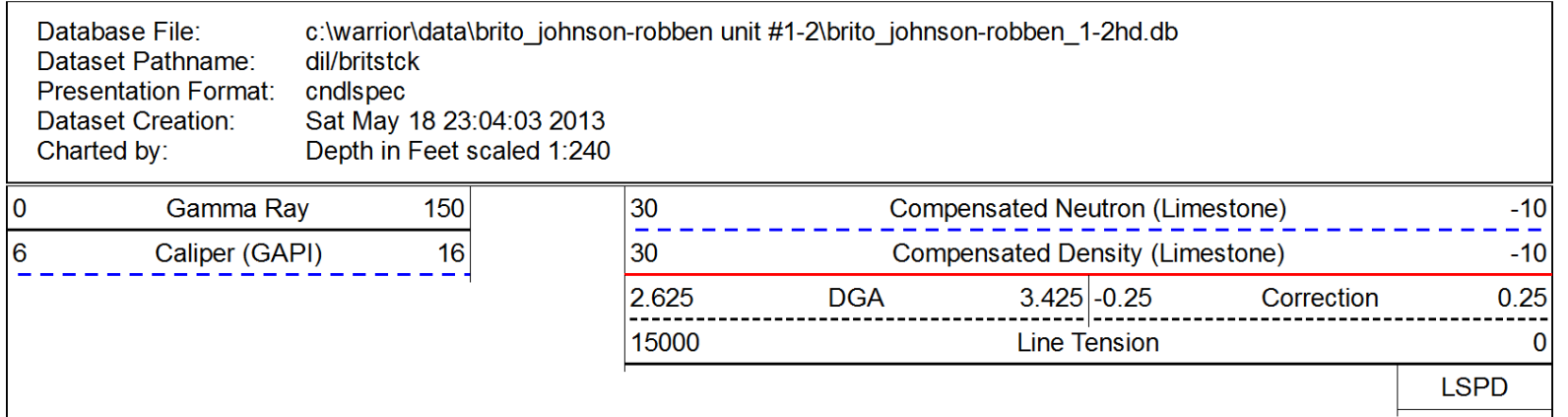
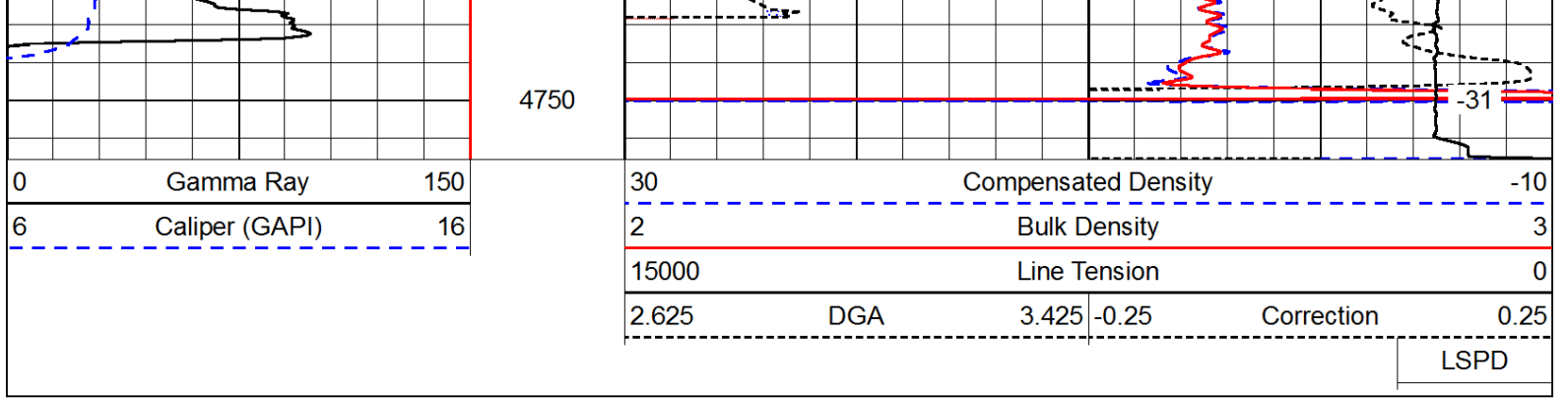
Database File: c:\warrior\data\brito_johnson-robben unit #1-2\brito_johnson-robben_1-2hd.db
 Dataset Pathname: dil/britstck
 Presentation Format: cdl
 Dataset Creation: Sat May 18 23:04:03 2013
 Charted by: Depth in Feet scaled 1:600

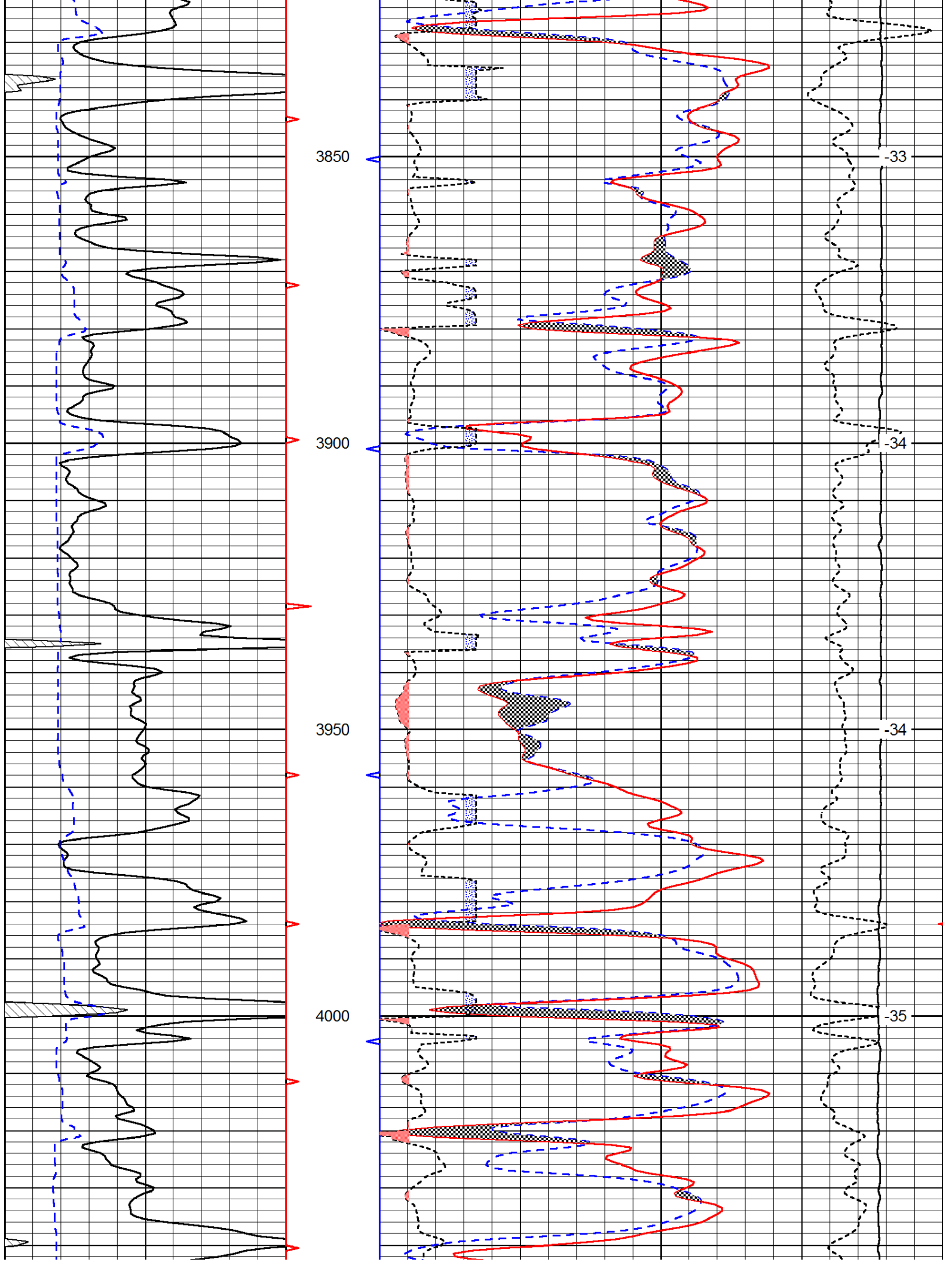
0	Gamma Ray	150
6	Caliper (GAPI)	16

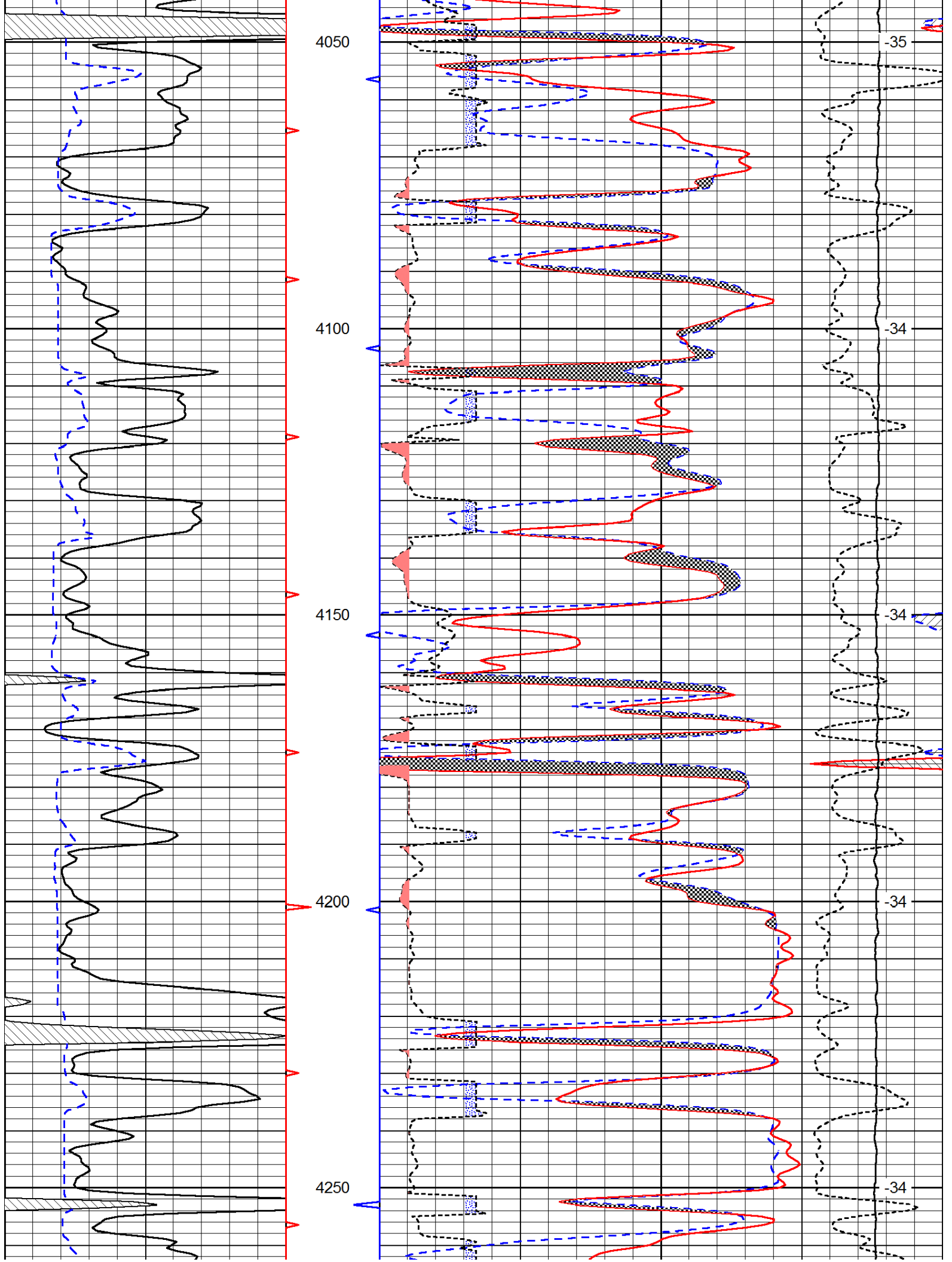
30	Compensated Density		-10
2	Bulk Density		3
15000	Line Tension		0
2.625	DGA	3.425	-0.25
			Correction
			0.25
LSPD			

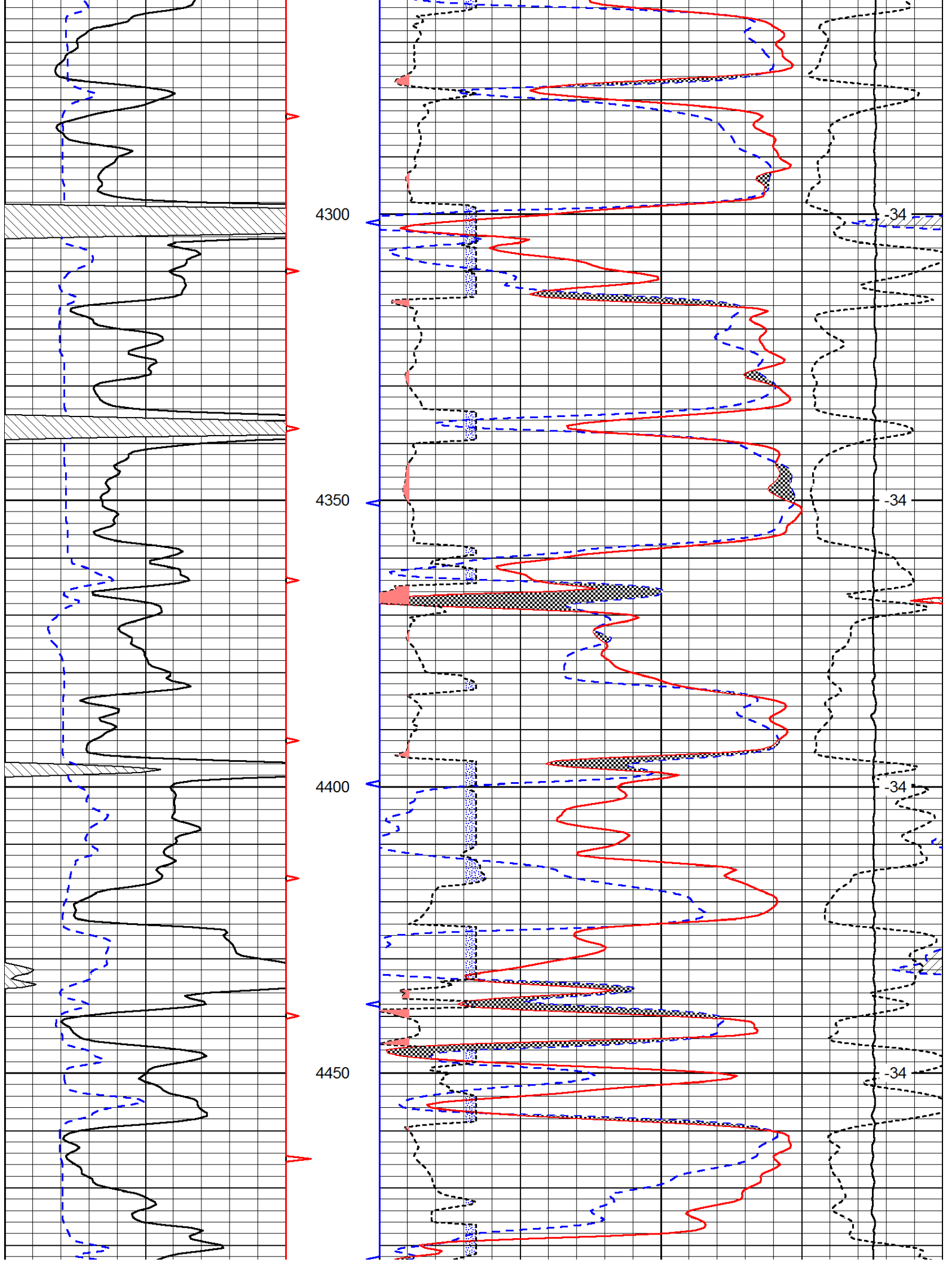


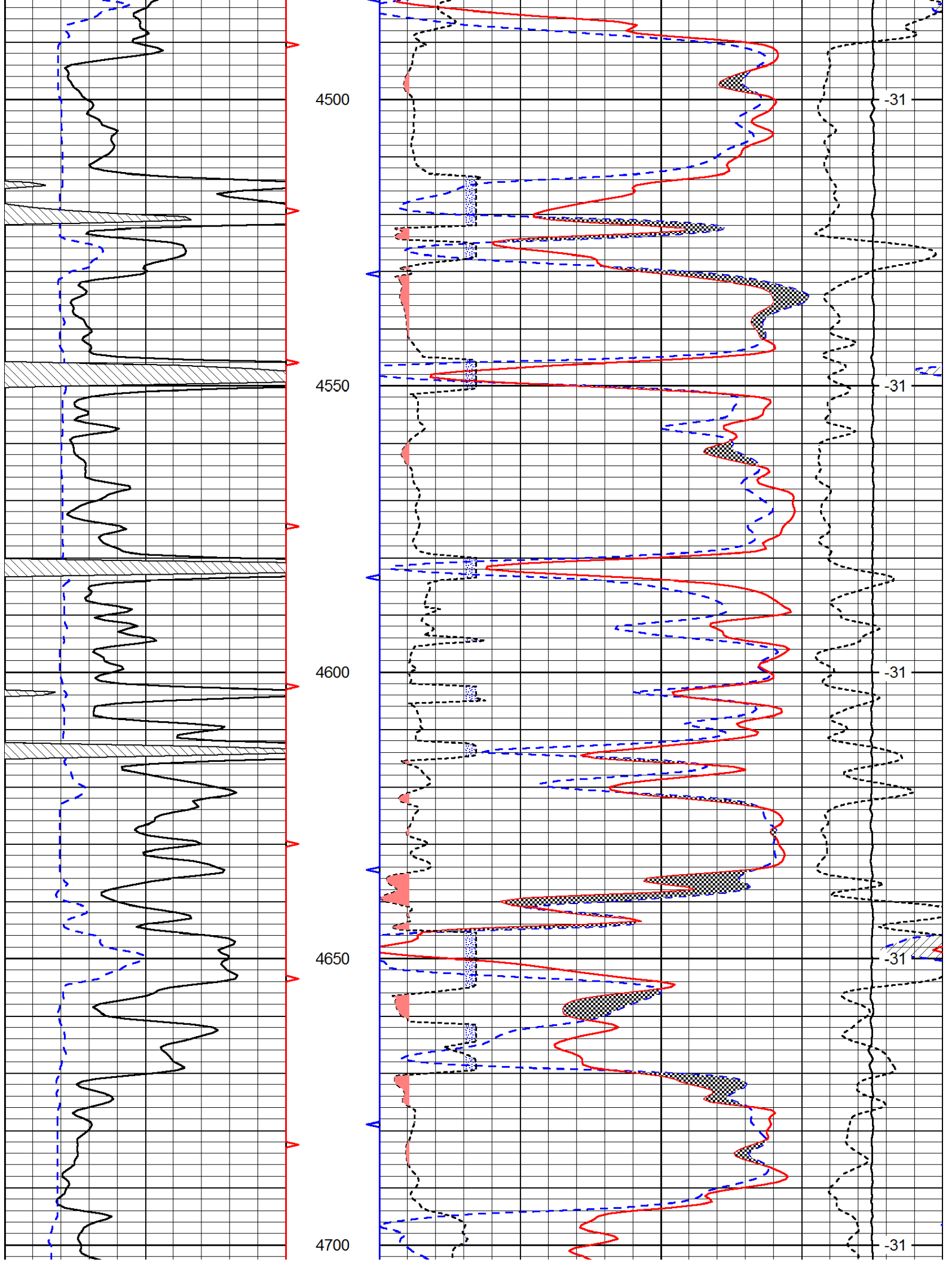


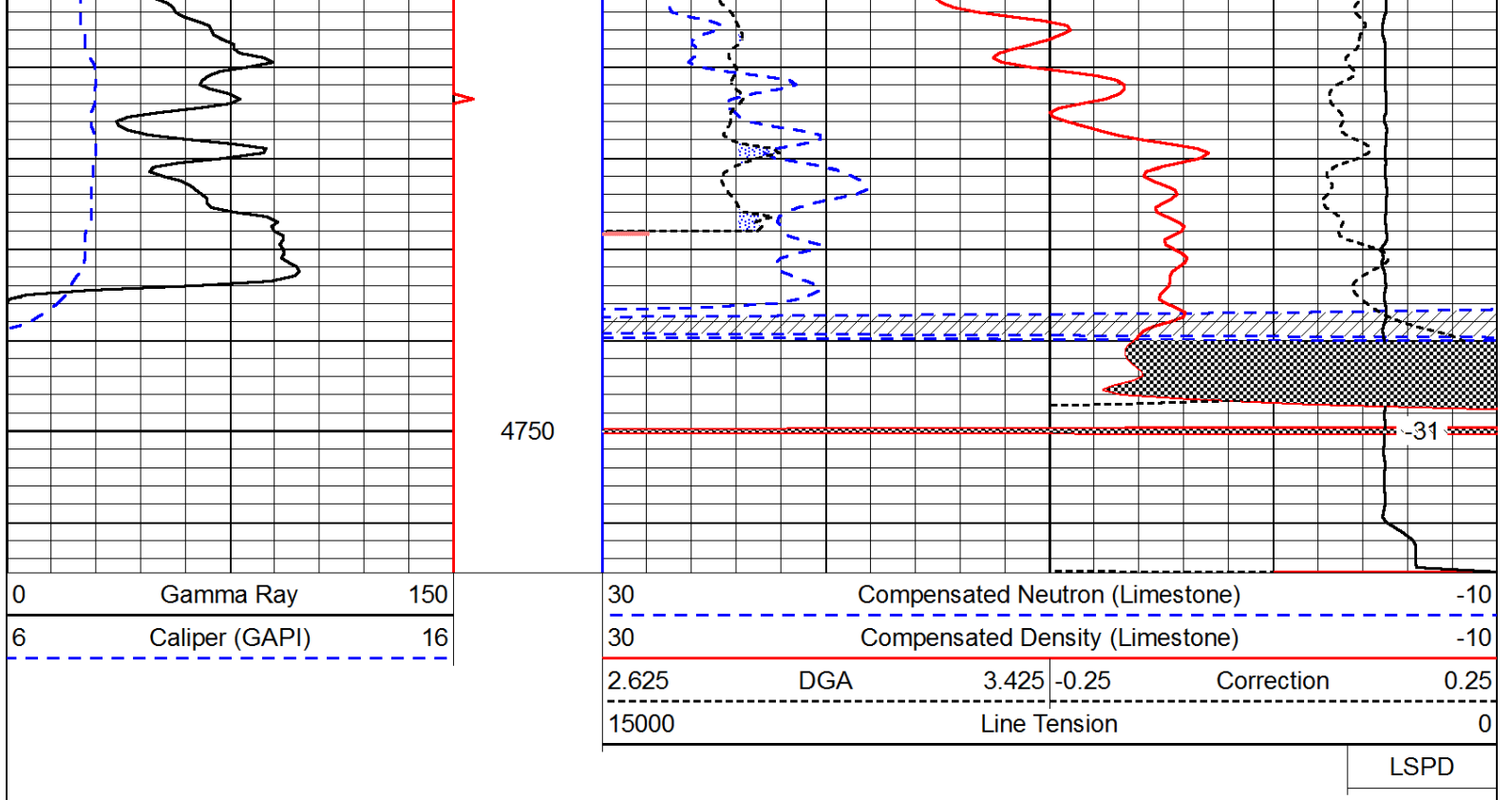








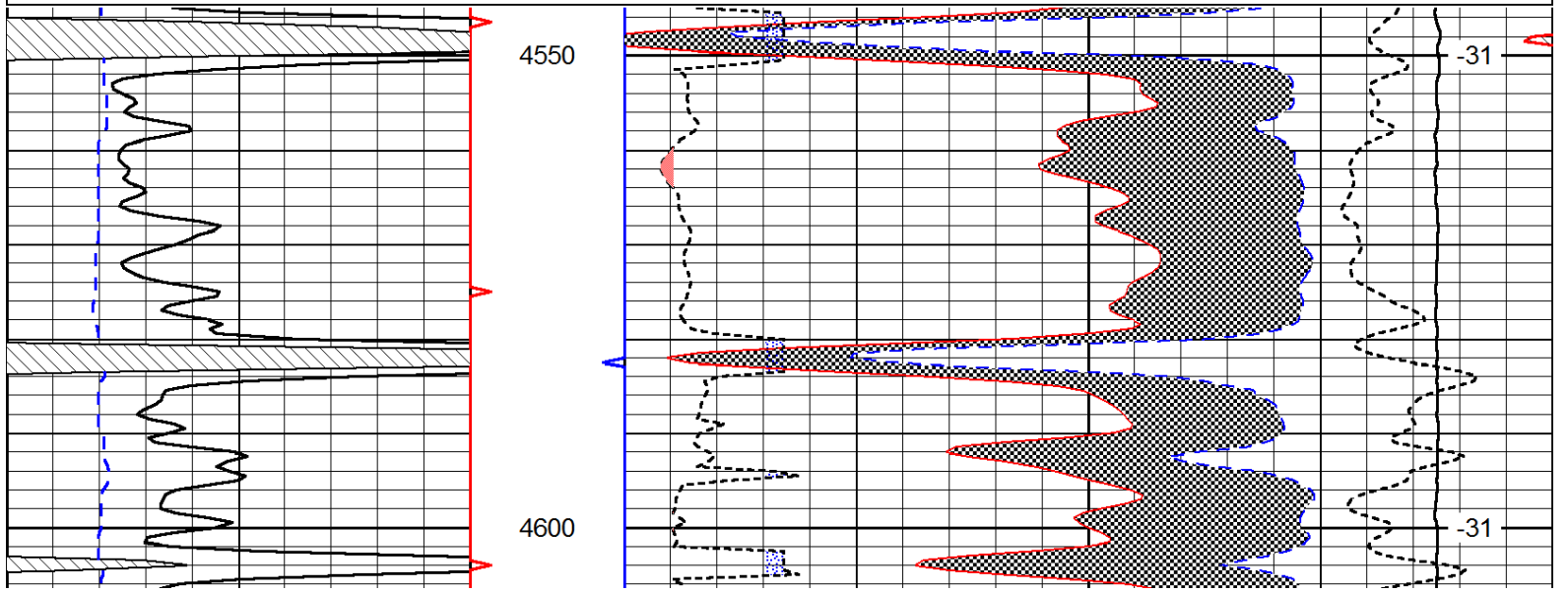
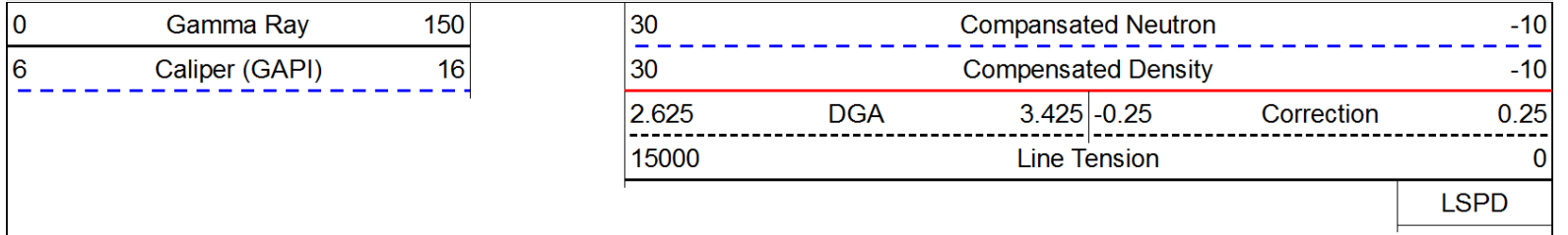


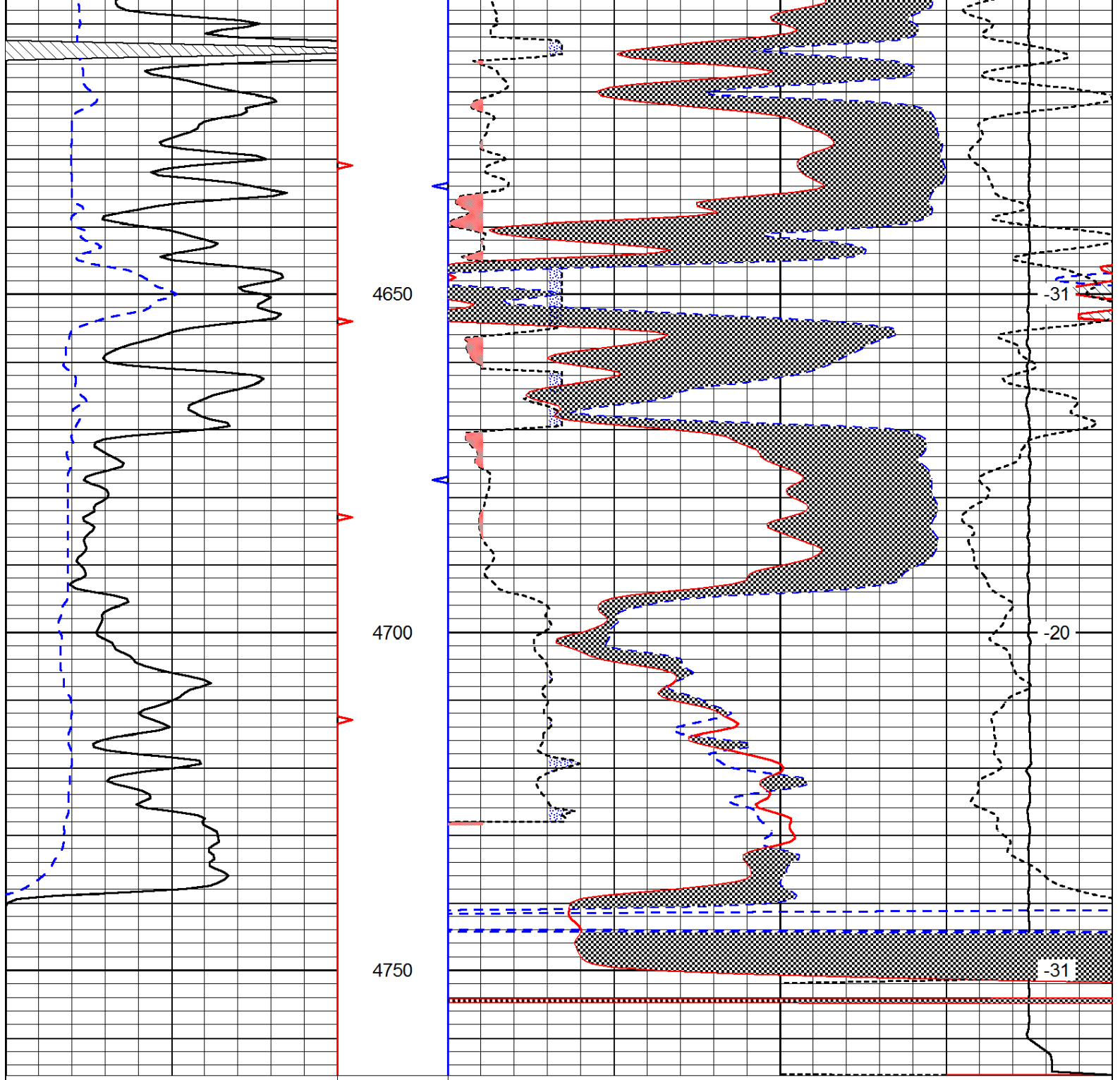


Pioneer Energy Services

Dolomite Matrix (2.83)

Database File: c:\warrior\data\brito_johnson-robben unit #1-2\brito_johnson-robben_1-2hd.db
 Dataset Pathname: dil/dolo283
 Presentation Format: cndldolo
 Dataset Creation: Sat May 18 23:04:07 2013
 Charted by: Depth in Feet scaled 1:240





0	Gamma Ray	150
6	Caliper (GAPI)	16

30	Compansated Neutron			-10	
30	Compensated Density			-10	
2.625	DGA	3.425	-0.25	Correction	0.25
15000	Line Tension			0	

LSPD